

V&V Reference Report

L2 ASCDS Version : 8.4.4

Observation 58447 - L2 Version 2
Chandra X-Ray Center

L2 Processing Date : Apr 22 2012

Contents

1	Front	2
2	OBI	3
2.1	OBI	3
2.1.1	Images	3
2.1.2	Bias	3
2.1.3	Parameters	4
2.1.4	Events	4
2.2	Compared Parameters	5
2.3	Star Slots	6
2.4	FID Slots	6
A	Summary	7
A.1	Status	7
A.2	Comments	7

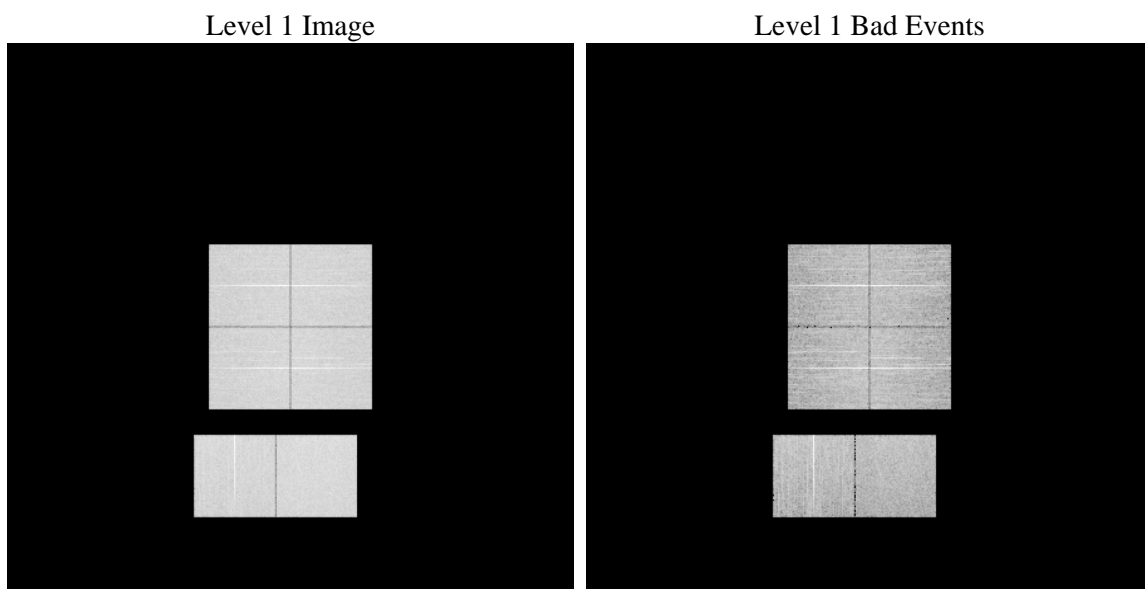
1 Front

seq_num	 	Sequence number
obs_id	58447	Observation id
title	ACIS-012367 diagnostics	Proposal title
observer	CHANDRA engineering request/realtime commanding	Principal investig
object	 	Source name
dtcycle	0	
cycle	P	events from which exps? Prim/Second/Both
ra_targ	0.0	Observer's specified target RA [deg]
dec_targ	0.0	Observer's specified target Dec [deg]
ra_nom	214.57770339039	Nominal RA [deg]
dec_nom	12.811336542537	Nominal Dec [deg]
roll_nom	128.12074582227	Nominal Roll [deg]
revision	2	Processing version of data
ontime	8273.7322431207	Sum of GTIs [s]
livetime	8168.9652636148	Livetime [s]
ontime0	8273.6912031174	Sum of GTIs [s]
ontime1	8273.6501631141	Sum of GTIs [s]
ontime2	8273.6091231108	Sum of GTIs [s]
ontime3	8273.773283124	Sum of GTIs [s]
ontime6	8273.5680831075	Sum of GTIs [s]
ontime7	8273.7322431207	Sum of GTIs [s]
l2events	759794	Number of level 2 events

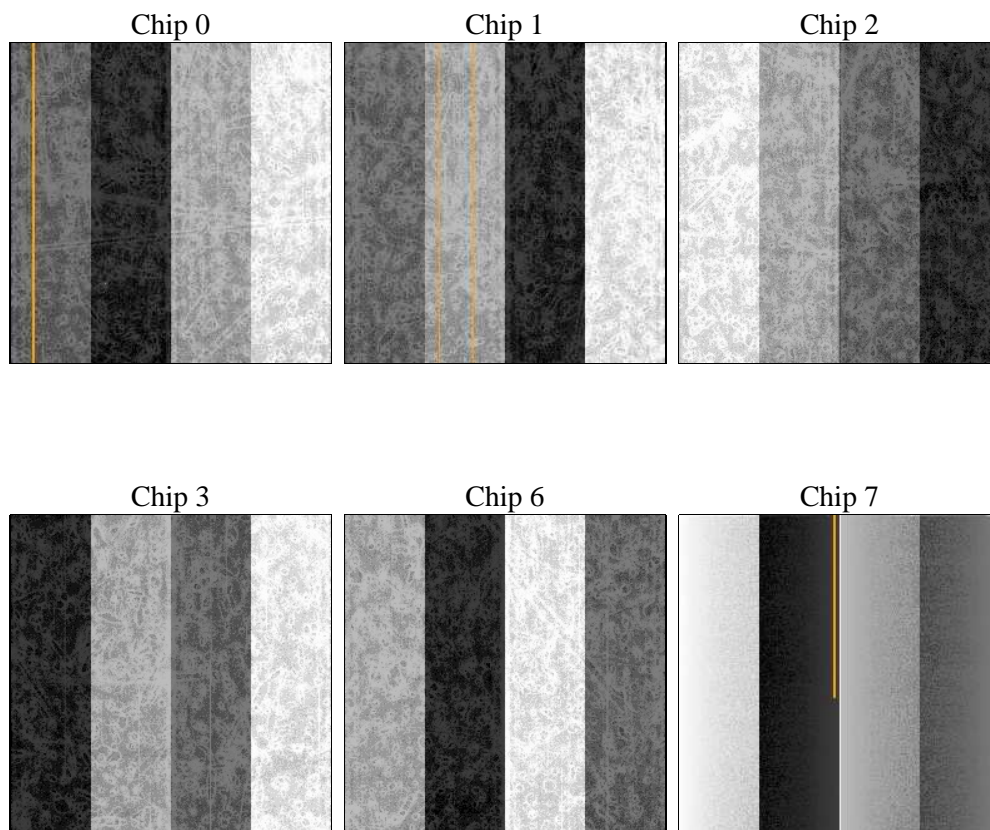
2 OBI

2.1 OBI

2.1.1 Images



2.1.2 Bias



2.1.3 Parameters

obi_num	0	Obi number	sched_exp_time	0.0	[s] Scheduled observation exposure time
ascdsver	8.4.4	Processing system revision	ontime	8273.7322431207	Sum of GTIs [s]
caldsver	4.4.9	 	ontime0	8273.6912031174	Sum of GTIs [s]
date	2012-04-22T20:45:50	Date and time of file creation	ontime1	8273.6501631141	Sum of GTIs [s]
revision	2	Processing version of data	ontime2	8273.6091231108	Sum of GTIs [s]
			ontime3	8273.773283124	Sum of GTIs [s]
			ontime6	8273.5680831075	Sum of GTIs [s]
			ontime7	8273.7322431207	Sum of GTIs [s]
			l1events	1216198	Number of level 1 events

2.1.4 Events

	ccd 0	ccd 1	ccd 2	ccd 3	ccd 6	ccd 7		ccd 0	ccd 1	ccd 2	ccd 3	ccd 6	ccd 7
level 1 events	194721	195454	197027	199129	207075	222792	grade 0 events	68780	68366	69792	70666	70825	34008
rejected events	67679	68288	70361	71564	74564	62704		35%	34%	35%	35%	34%	15%
rejected %	34%	34%	35%	35%	36%	28%	grade 1 events	490	398	521	532	421	167
								0%	0%	0%	0%	0%	0%
							grade 2 events	22875	22946	21628	21817	23176	34725
								11%	11%	10%	10%	11%	15%
							grade 3 events	8312	8320	8583	8557	8541	15375
								4%	4%	4%	4%	4%	6%
							grade 4 events	8272	8204	8472	8521	8275	15291
								4%	4%	4%	4%	3%	6%
							grade 5 events	3911	3964	3557	4379	4216	10526
								2%	2%	1%	2%	2%	4%
							grade 6 events	18803	19330	18191	18004	21694	60689
								9%	9%	9%	9%	10%	27%
							grade 7 events	63278	63926	66283	66653	69927	52011
								32%	32%	33%	33%	33%	23%

2.2 Compared Parameters

Parameter	Planned	Actual	Parameter	Planned	Actual
Instrument	ACIS	ACIS	Obspar format version number	7	7
Detector	ACIS-012367	ACIS-012367	Obspar file type	PREDICTED	ACTUAL
Grating	NONE	NONE	Obspar update status	NONE	UPDATED
Data mode	FAINT	FAINT	On-chip summing requested	N	N
Observation mode	SECONDARY	SECONDARY	Subarray requested	NONE	NONE
[deg] Pointing RA	0	214.5777033903915	Alternating exposures requested	N	N
[deg] Pointing Dec	0	12.81133654253739	[s] Primary exposure time	3.2	3.2
[deg] Pointing Roll	0.0	128.1207458222732			
[mm] SIM focus pos	-0.782348	-0.7809083437167272			
[mm] SIM defocus	0	0.7524282956875696			
[mm] SIM translation stage pos	-233.592463	250.466033080201			
[mm] SIM translation stage offset	0	-0.01005468664627074			
[s] Observation start time (MET)	292005529.135457	292005528.11046			
Observation start date	2007-04-03T16:38:49	2007-04-03T16:38:48			
[s] Observation end time (MET)	292028503.486552	292028502.46155			
Observation end date	2007-04-03T23:01:43	2007-04-03T23:01:42			
Read mode	TIMED	TIMED			

2.3 Star Slots

2.4 FID Slots

A Summary

A.1 Status

V&V Scientist	Jen Lauer
V&V Date (YYYY-MM-DD)	2012.04.23
V&V Edition	1
V&V Disposition and Status	OK
V&V Charge Time	8.2737322431207

A.2 Comments