

V&V Reference Report

L2 ASCDS Version : 8.4.4

Observation 58097 - L2 Version 2
Chandra X-Ray Center

L2 Processing Date : May 5 2012

Contents

1	Front	2
2	OBI	3
2.1	OBI	3
2.1.1	Images	3
2.1.2	Bias	3
2.1.3	Parameters	4
2.1.4	Events	4
2.2	Compared Parameters	5
2.3	Star Slots	6
2.4	FID Slots	6
A	Summary	7
A.1	Status	7
A.2	Comments	7

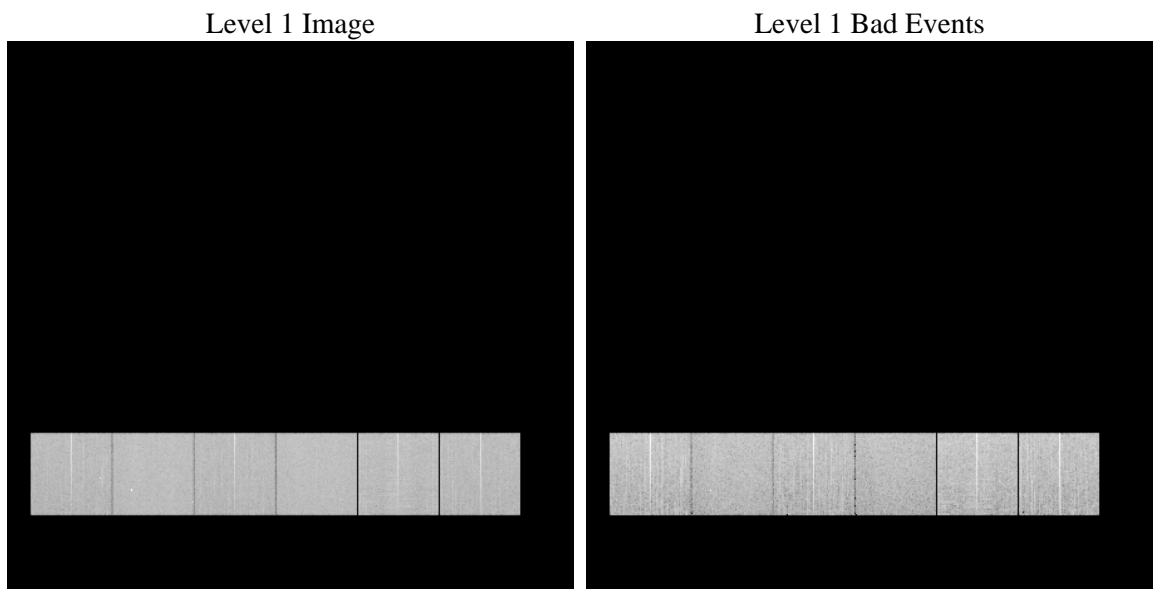
1 Front

seq_num	 	Sequence number
obs_id	58097	Observation id
title	ACIS-456789 diagnostics	Proposal title
observer	CHANDRA engineering request/realtime commanding	Principal investig
object	 	Source name
dtcycle	0	
cycle	P	events from which exps? Prim/Second/Both
ra_targ	0.0	Observer's specified target RA [deg]
dec_targ	0.0	Observer's specified target Dec [deg]
ra_nom	66.963591447247	Nominal RA [deg]
dec_nom	50.483037900739	Nominal Dec [deg]
roll_nom	183.38609328225	Nominal Roll [deg]
revision	2	Processing version of data
ontime	8269.6114532948	Sum of GTIs [s]
livetime	8164.8966537109	Livetime [s]
ontime4	8271.999969244	Sum of GTIs [s]
ontime5	8271.999969244	Sum of GTIs [s]
ontime6	8271.999969244	Sum of GTIs [s]
ontime7	8269.6114532948	Sum of GTIs [s]
ontime8	8271.999969244	Sum of GTIs [s]
ontime9	8269.5704132915	Sum of GTIs [s]
l2events	682261	Number of level 2 events

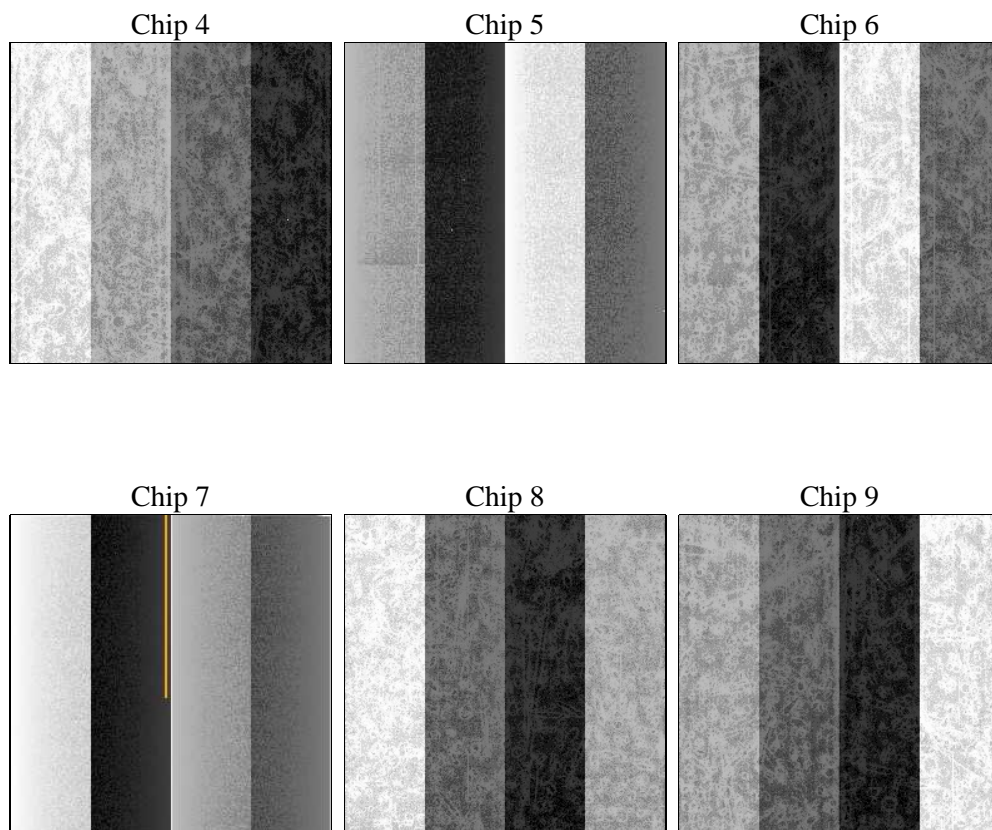
2 OBI

2.1 OBI

2.1.1 Images



2.1.2 Bias



2.1.3 Parameters

obi_num	0	Obi number	sched_exp_time	0.0	[s] Scheduled observation exposure time
ascdsver	8.4.4	Processing system revision	ontime	8269.6114532948	Sum of GTIs [s]
caldsver	4.4.9	 	ontime4	8271.999969244	Sum of GTIs [s]
date	2012-05-05T21:45:10	Date and time of file creation	ontime5	8271.999969244	Sum of GTIs [s]
revision	2	Processing version of data	ontime6	8271.999969244	Sum of GTIs [s]
			ontime7	8269.6114532948	Sum of GTIs [s]
			ontime8	8271.999969244	Sum of GTIs [s]
			ontime9	8269.5704132915	Sum of GTIs [s]
			l1events	1197257	Number of level 1 events

2.1.4 Events

	ccd 4	ccd 5	ccd 6	ccd 7	ccd 8	ccd 9		ccd 4	ccd 5	ccd 6	ccd 7	ccd 8	ccd 9
level 1 events	187609	209447	190664	210585	208728	190224	grade 0 events	60513	21221	60347	29216	64138	59118
rejected events	82479	71564	77419	66890	83673	81094		32%	10%	31%	13%	30%	31%
rejected %	43%	34%	40%	31%	40%	42%	grade 1 events	596	286	356	155	469	452
								0%	0%	0%	0%	0%	0%
							grade 2 events	16386	50728	19796	31322	22704	18749
								8%	24%	10%	14%	10%	9%
							grade 3 events	7257	6642	7098	13593	8637	7201
								3%	3%	3%	6%	4%	3%
							grade 4 events	7175	6259	7282	13530	8540	7278
								3%	2%	3%	6%	4%	3%
							grade 5 events	4167	9701	4346	11011	5628	4857
								2%	4%	2%	5%	2%	2%
							grade 6 events	13799	53033	18722	56034	21036	16784
								7%	25%	9%	26%	10%	8%
							grade 7 events	77716	61577	72717	55724	77576	75785
								41%	29%	38%	26%	37%	39%

2.2 Compared Parameters

Parameter	Planned	Actual	Parameter	Planned	Actual
Instrument	ACIS	ACIS	Obspar format version number	7	7
Detector	ACIS-456789	ACIS-456789	Obspar file type	PREDICTED	ACTUAL
Grating	NONE	NONE	Obspar update status	NONE	UPDATED
Data mode	FAINT	FAINT	On-chip summing requested	N	N
Observation mode	SECONDARY	SECONDARY	Subarray requested	NONE	NONE
[deg] Pointing RA	0	66.96359144724673	Alternating exposures requested	N	N
[deg] Pointing Dec	0	50.48303790073919	[s] Primary exposure time	3.2	3.2
[deg] Pointing Roll	0.0	183.386093282253			
[mm] SIM focus pos	-0.684267	-0.7809083437167272			
[mm] SIM defocus	0	0.7524282956875696			
[mm] SIM translation stage pos	-190.132523	250.466033080201			
[mm] SIM translation stage offset	0	-0.01005468664627074			
[s] Observation start time (MET)	313023718.894049	313023717.86904			
Observation start date	2007-12-02T23:01:59	2007-12-02T23:01:57			
[s] Observation end time (MET)	313047613.695204	313047612.67019			
Observation end date	2007-12-03T05:40:14	2007-12-03T05:40:12			
Read mode	TIMED	TIMED			

2.3 Star Slots

2.4 FID Slots

A Summary

A.1 Status

V&V Scientist	Beth Sundheim
V&V Date (YYYY-MM-DD)	2012.05.07
V&V Edition	1
V&V Disposition and Status	OK
V&V Charge Time	8.2696114532948

A.2 Comments