

V&V Reference Report

L2 ASCDS Version : 8.5.1.1

Observation 5797 - L2 Version 3
Chandra X-Ray Center

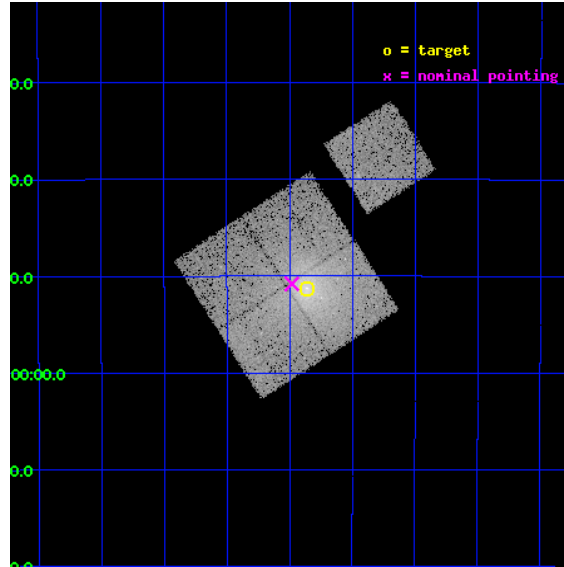
L2 Processing Date : Dec 27 2012

Contents

1	Front	2
2	OBI	3
2.1	OBI	3
2.1.1	Images	3
2.1.2	Bias	3
2.1.3	Parameters	4
2.1.4	Events	4
2.2	Compared Parameters	5
2.3	Aspect	6
2.4	Star Slots	9
2.4.1	Slot 3	9
2.4.2	Slot 4	10
2.4.3	Slot 5	11
2.4.4	Slot 6	12
2.4.5	Slot 7	13
2.5	FID Slots	14
2.5.1	Slot 0	14
2.5.2	Slot 1	15
2.5.3	Slot 2	16
A	Summary	17
A.1	Status	17
A.2	Comments	17

1 Front

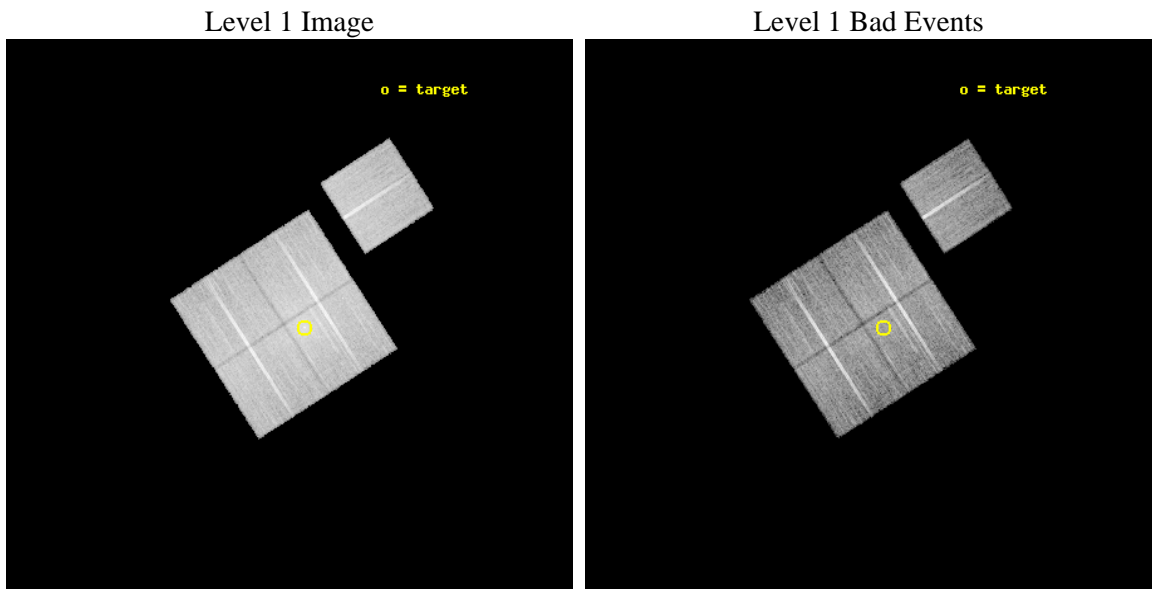
seq_num	800510	Sequence number
obs_id	5797	Observation id
title	X-ray Properties of a Mass-Selected Group Catalog	Proposal title
observer	Dr. Pasquale Mazzotta	Principal investigator
object	2PIGGz0.061 J0011.5-2850	Source name
dtcycle	0	
cycle	P	events from which exps? Prim/Second/Both
ra_targ	2.839583	Observer's specified target RA [deg]
dec_targ	-28.854194	Observer's specified target Dec [deg]
ra_nom	2.8703073357679	Nominal RA [deg]
dec_nom	-28.846679563301	Nominal Dec [deg]
roll_nom	57.186212688511	Nominal Roll [deg]
revision	3	Processing version of data
ontime	20131.358961076	Sum of GTIs [s]
livetime	19868.327935758	Livetime [s]
ontime0	20131.358971	Sum of GTIs [s]
ontime1	20134.499961257	Sum of GTIs [s]
ontime2	20134.499961257	Sum of GTIs [s]
ontime3	20131.358961076	Sum of GTIs [s]
ontime6	20134.499961257	Sum of GTIs [s]
l2events	87270	Number of level 2 events



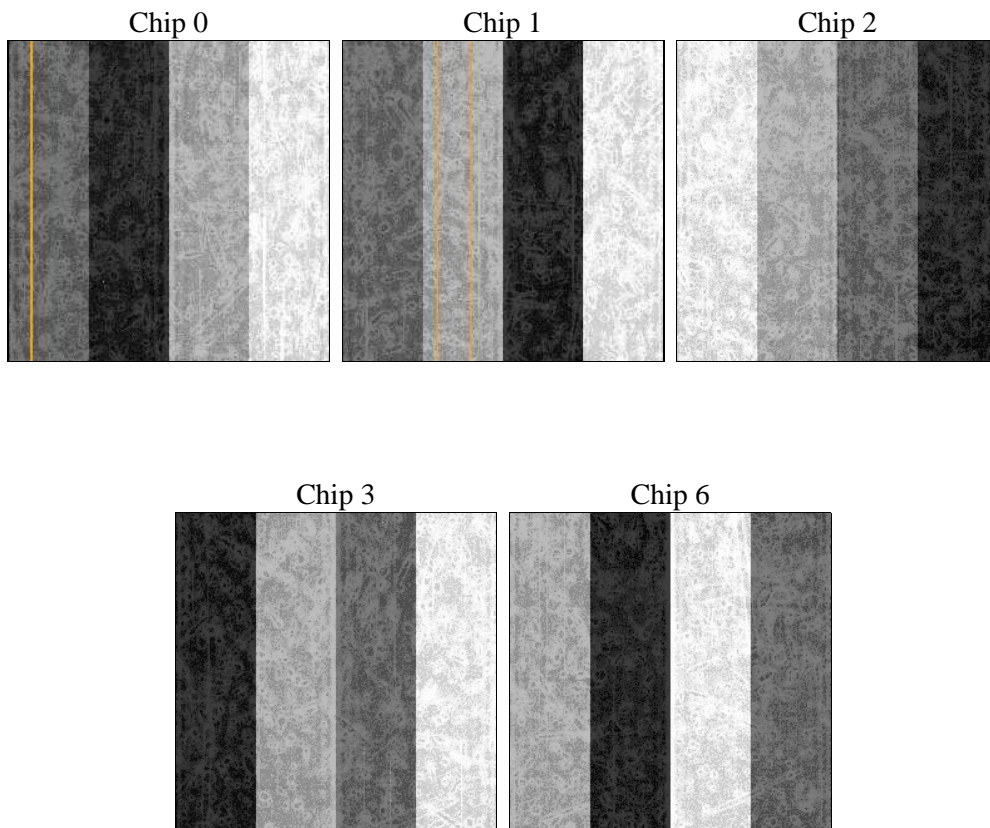
2 OBI

2.1 OBI

2.1.1 Images



2.1.2 Bias



2.1.3 Parameters

obi_num	1	Obi number	sched_exp_time	20000.000000	[s] Scheduled observation exposure time
ascdsver	8.5.1.1	Processing system revision	ontime	20131.358961076	Sum of GTIs [s]
caldsver	4.5.5	 	ontime0	20131.358971	Sum of GTIs [s]
date	2012-12-28T00:29:14	Date and time of file creation	ontime1	20134.499961257	Sum of GTIs [s]
revision	3	Processing version of data	ontime2	20134.499961257	Sum of GTIs [s]
			ontime3	20131.358961076	Sum of GTIs [s]
			ontime6	20134.499961257	Sum of GTIs [s]
			l1events	660113	Number of level 1 events

2.1.4 Events

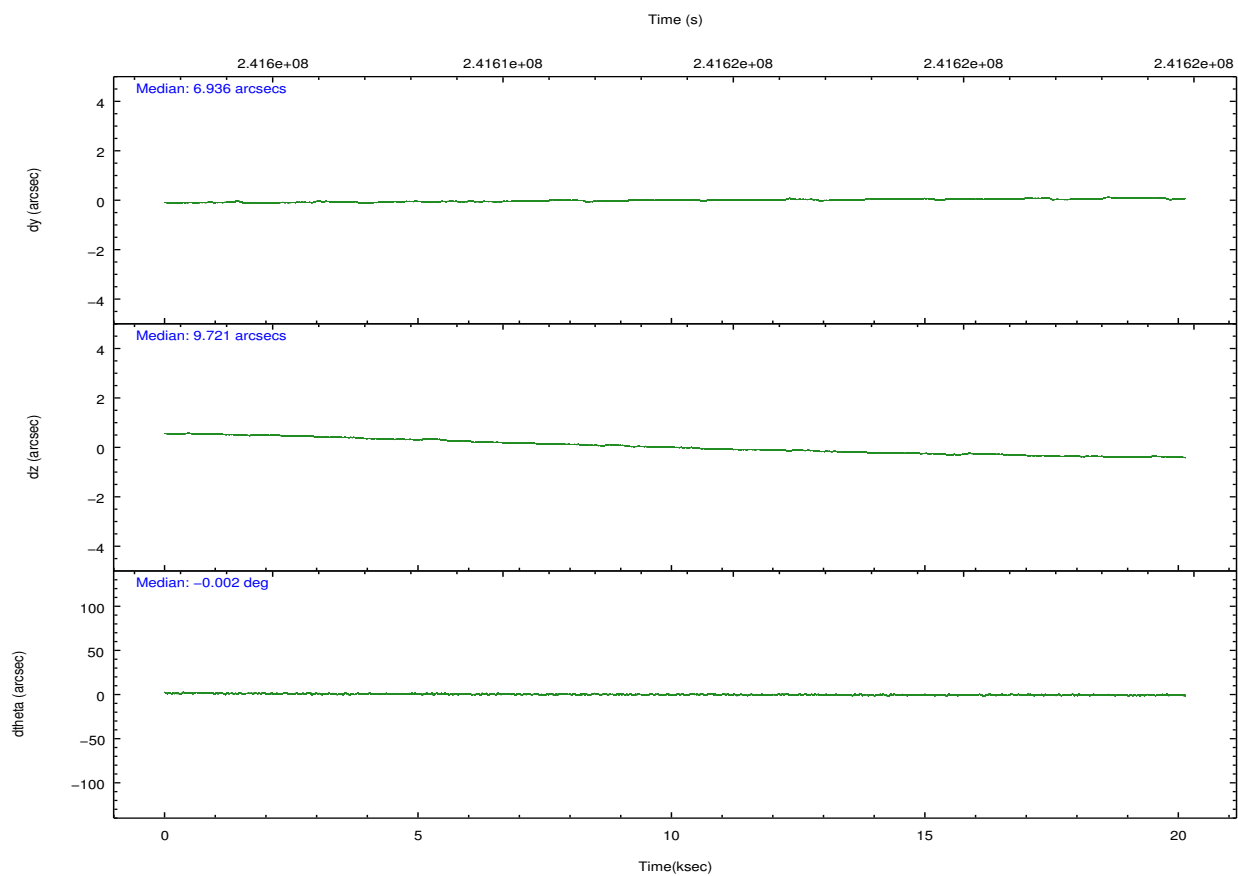
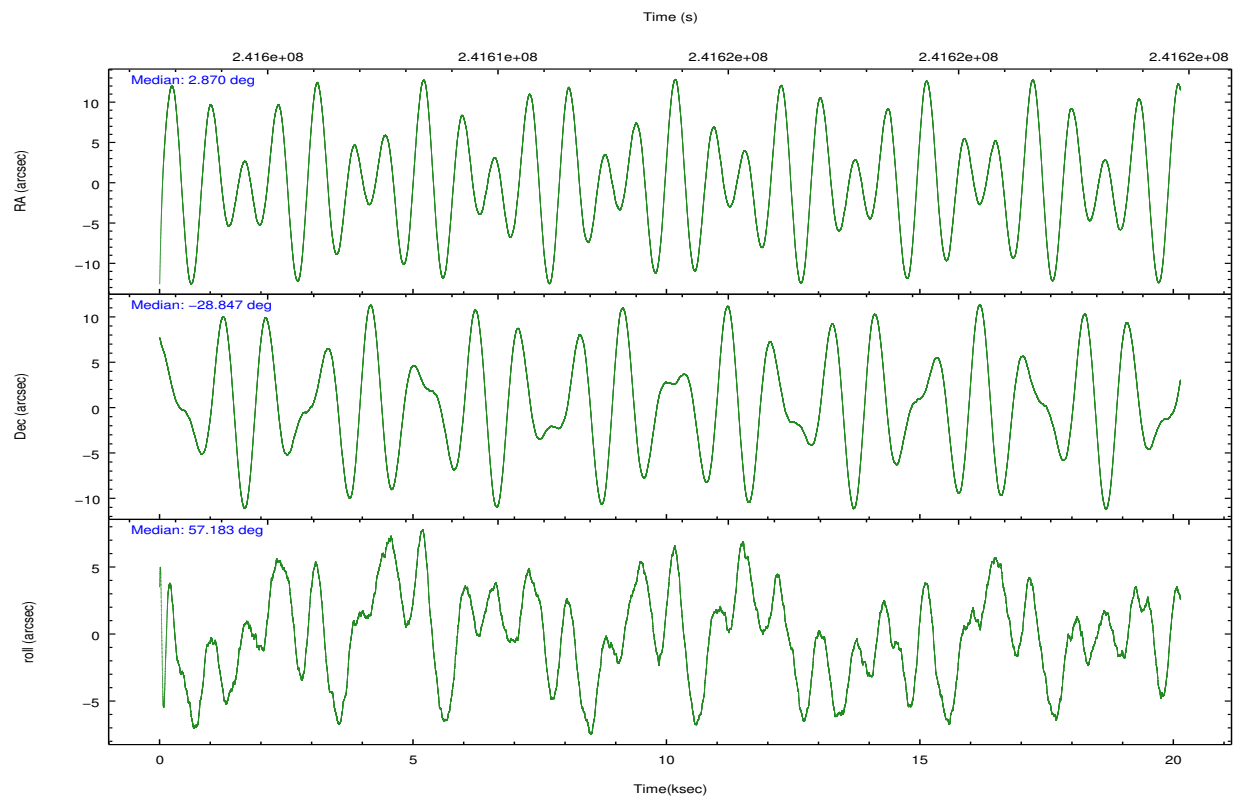
	ccd 0	ccd 1	ccd 2	ccd 3	ccd 6
level 1 events	121847	127356	138809	147895	124206
rejected events	106826	107113	120763	114484	111105
rejected %	87%	84%	86%	77%	89%

	ccd 0	ccd 1	ccd 2	ccd 3	ccd 6
grade 0 events	6475	10145	9304	22243	4805
	5%	7%	6%	15%	3%
grade 1 events	63	83	87	171	62
	0%	0%	0%	0%	0%
grade 2 events	3288	3855	3497	4649	2896
	2%	3%	2%	3%	2%
grade 3 events	1542	1767	1572	2006	1443
	1%	1%	1%	1%	1%
grade 4 events	1494	1831	1560	1972	1407
	1%	1%	1%	1%	1%
grade 5 events	4370	5026	4264	5139	5003
	3%	3%	3%	3%	4%
grade 6 events	2443	2971	2348	2933	2763
	2%	2%	1%	1%	2%
grade 7 events	102172	101678	116177	108782	105827
	83%	79%	83%	73%	85%

2.2 Compared Parameters

Parameter	Planned	Actual	Parameter	Planned	Actual
Instrument	ACIS	ACIS	Obspar format version number	7	7
Detector	ACIS-01236	ACIS-01236	Obspar file type	PREDICTED	ACTUAL
Grating	NONE	NONE	Obspar update status	NONE	UPDATED
Data mode	VFAINT	VFAINT	Number of optional ACIS chips dropped	0	0
Observation mode	POINTING	POINTING	On-chip summing requested	N	N
[deg] Pointing RA	2.868874	2.870307335767912	Subarray requested	NONE	NONE
[deg] Pointing Dec	-28.874055	-28.84667956330073	Alternating exposures requested	N	N
[deg] Pointing Roll	56.976816	57.18621268851145	[s] Primary exposure time	0.000000	3.1
[mm] SIM focus pos	-0.782348	-0.7809083437167272			
[mm] SIM defocus	0	0.001439871863259334			
[mm] SIM translation stage pos	-233.592463	-233.5874344608287			
[mm] SIM translation stage offset	0	-0.005018542100998502			
[s] Observation start time (MET)	241603806.184000	241602632.39029			
Observation start date	2005-08-28T08:09:02	2005-08-28T07:50:32			
[s] Observation end time (MET)	241623806.184000	241624511.01629			
Observation end date	2005-08-28T13:42:22	2005-08-28T13:55:11			
Read mode	TIMED	TIMED			

2.3 Aspect

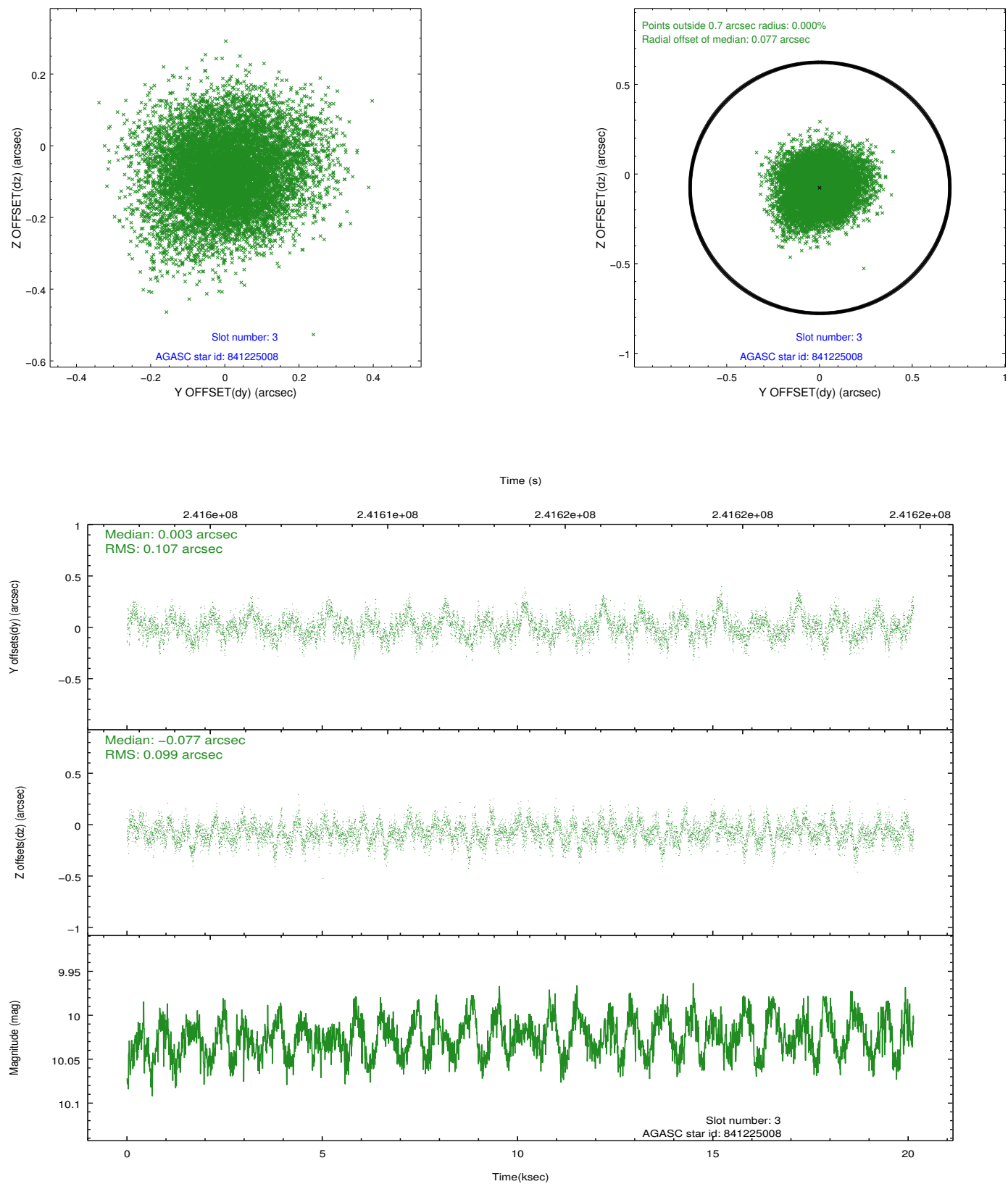


Slot Statistics

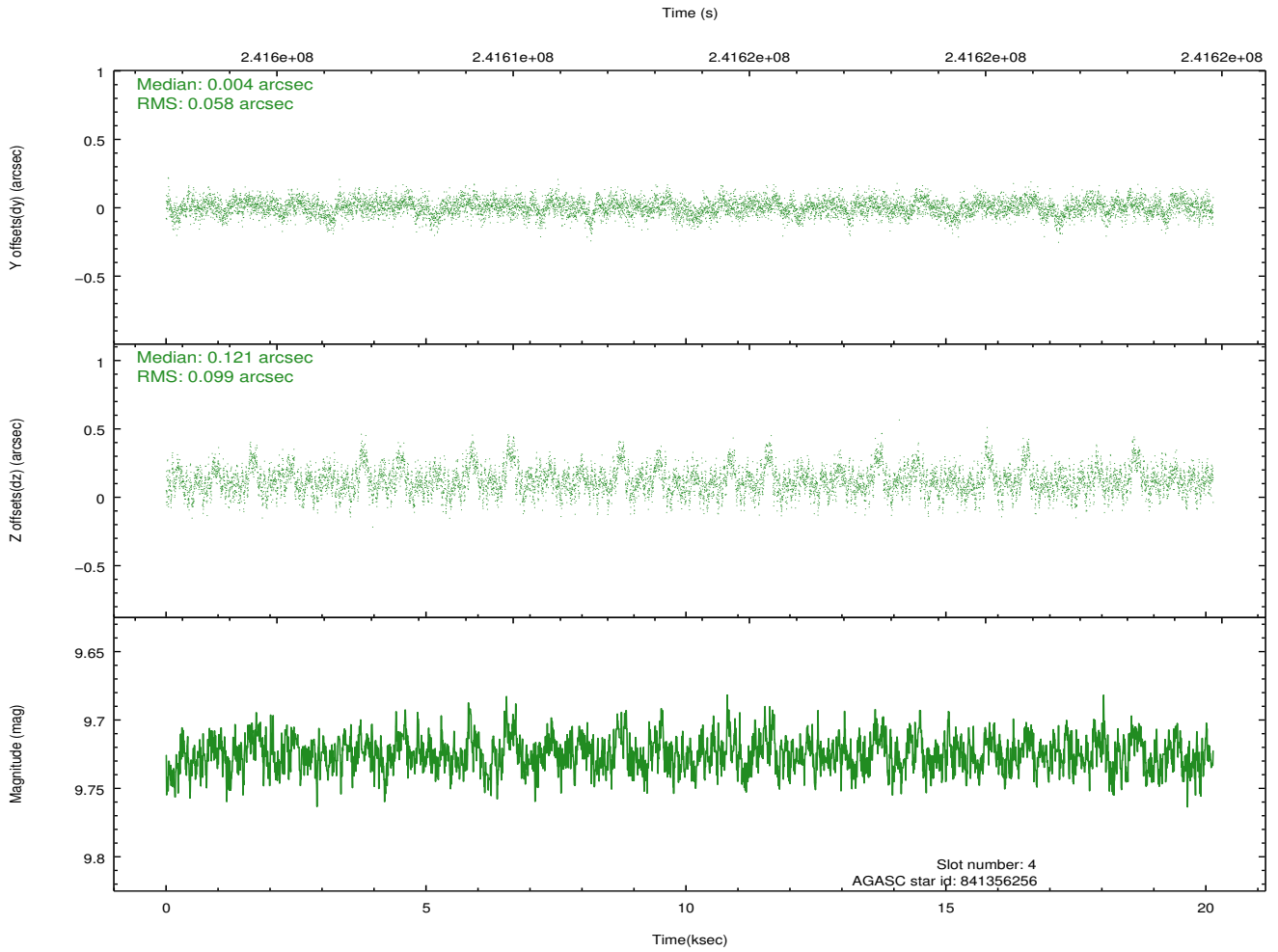
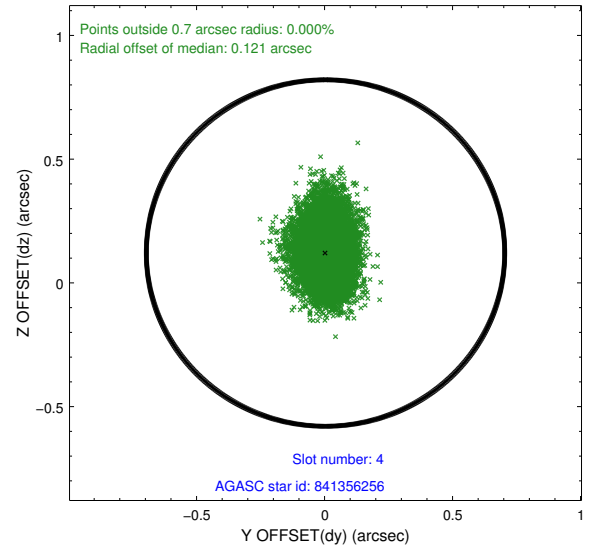
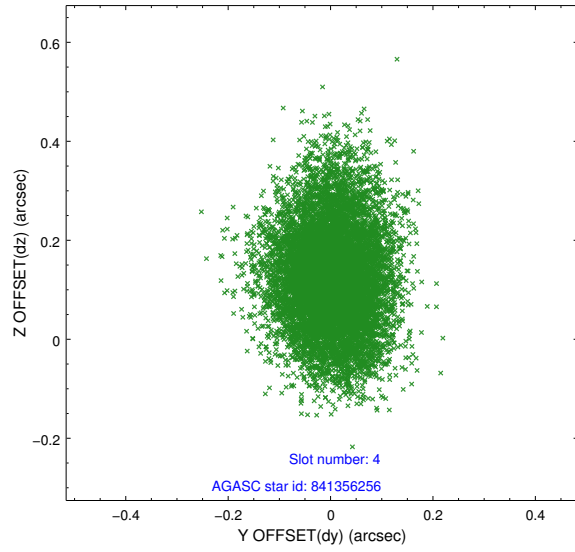
slot	status	id	mag	n_pts	med_dy	med_dz	dr1	dr2	ra	dec	mean_y	mean_z
0	FID	ACIS-I-1	7.24	4912	0.004	0.018	0.014	0.023	0.000000	0.000000	932.76	-833.20
1	FID	ACIS-I-5	7.23	4913	-0.158	0.025	0.006	0.012	0.000000	0.000000	-1815.41	1064.20
2	FID	ACIS-I-6	7.25	4912	0.063	0.028	0.013	0.021	0.000000	0.000000	398.16	1708.92
3	GUIDE	841225008	10.03	9810	0.003	-0.077	0.156	0.255	2.528125	-28.337799	1029.12	1956.47
4	GUIDE	841356256	9.73	9810	0.004	0.121	0.118	0.205	3.240103	-29.468590	-1161.80	-2142.74
5	GUIDE	841356288	9.35	9813	0.096	-0.024	0.100	0.159	3.165981	-29.341928	-904.78	-1700.69
6	GUIDE	841222768	9.92	9787	0.009	-0.042	0.134	0.221	2.568633	-28.107150	1794.50	2303.15
7	GUIDE	841352216	10.32	9809	-0.111	0.029	0.213	0.328	3.050711	-28.183391	2399.27	871.32

2.4 Star Slots

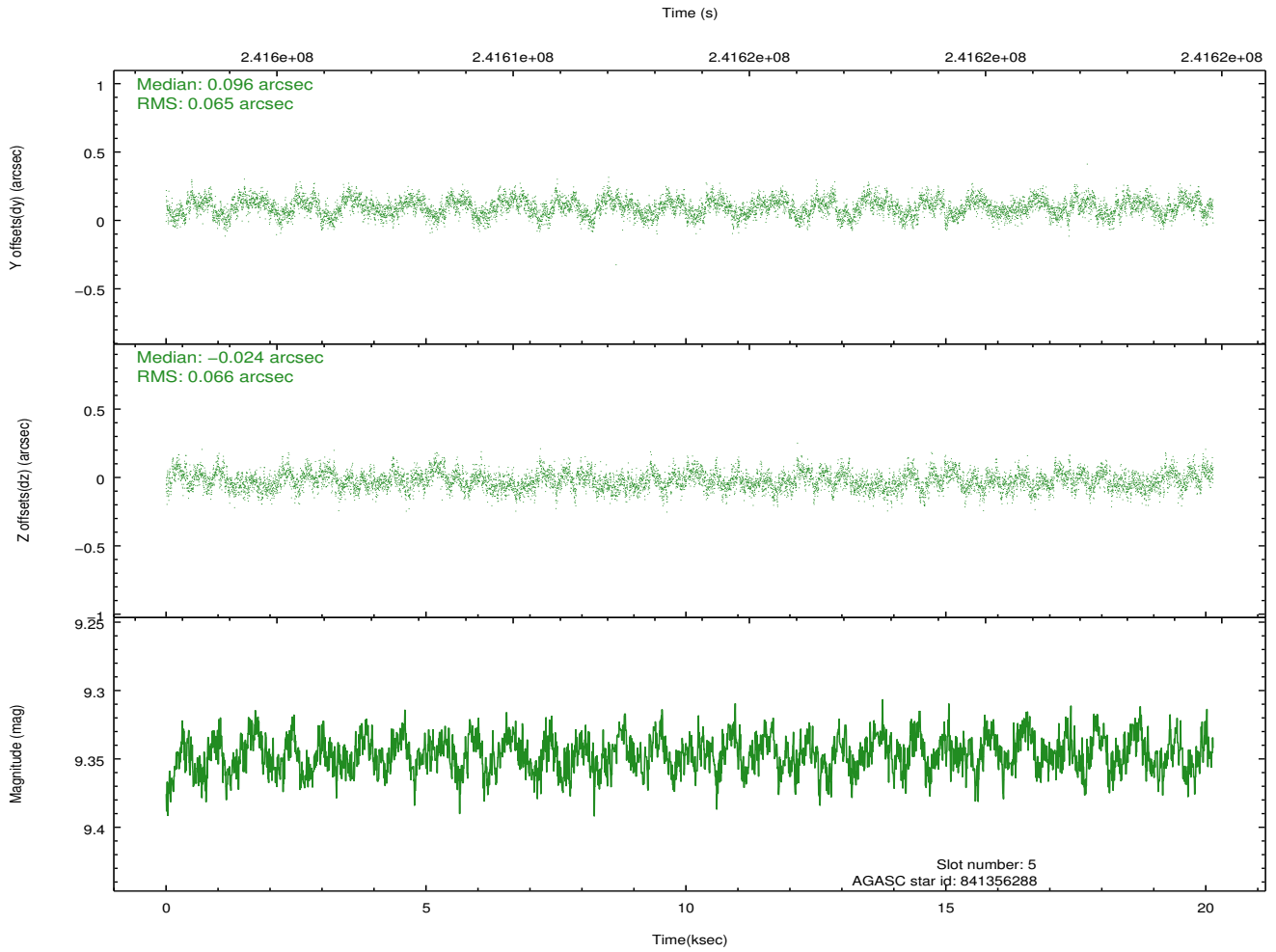
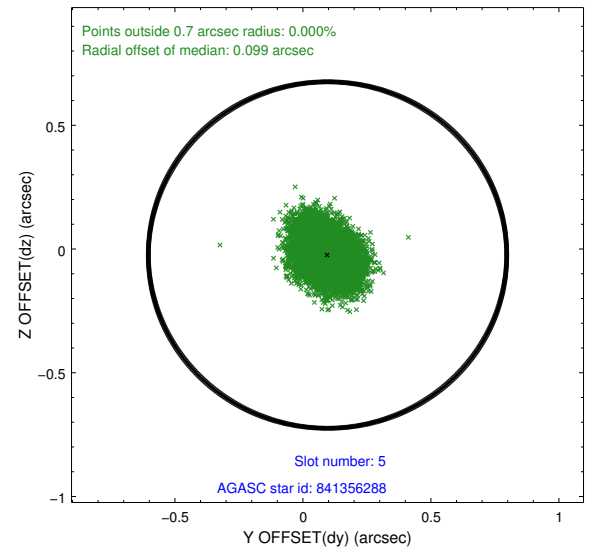
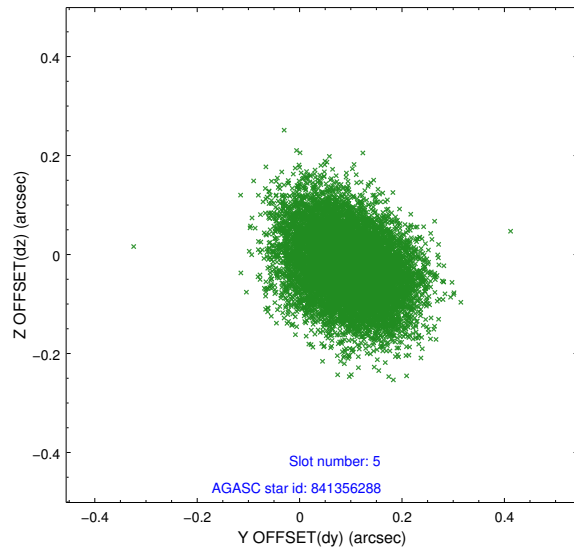
2.4.1 Slot 3



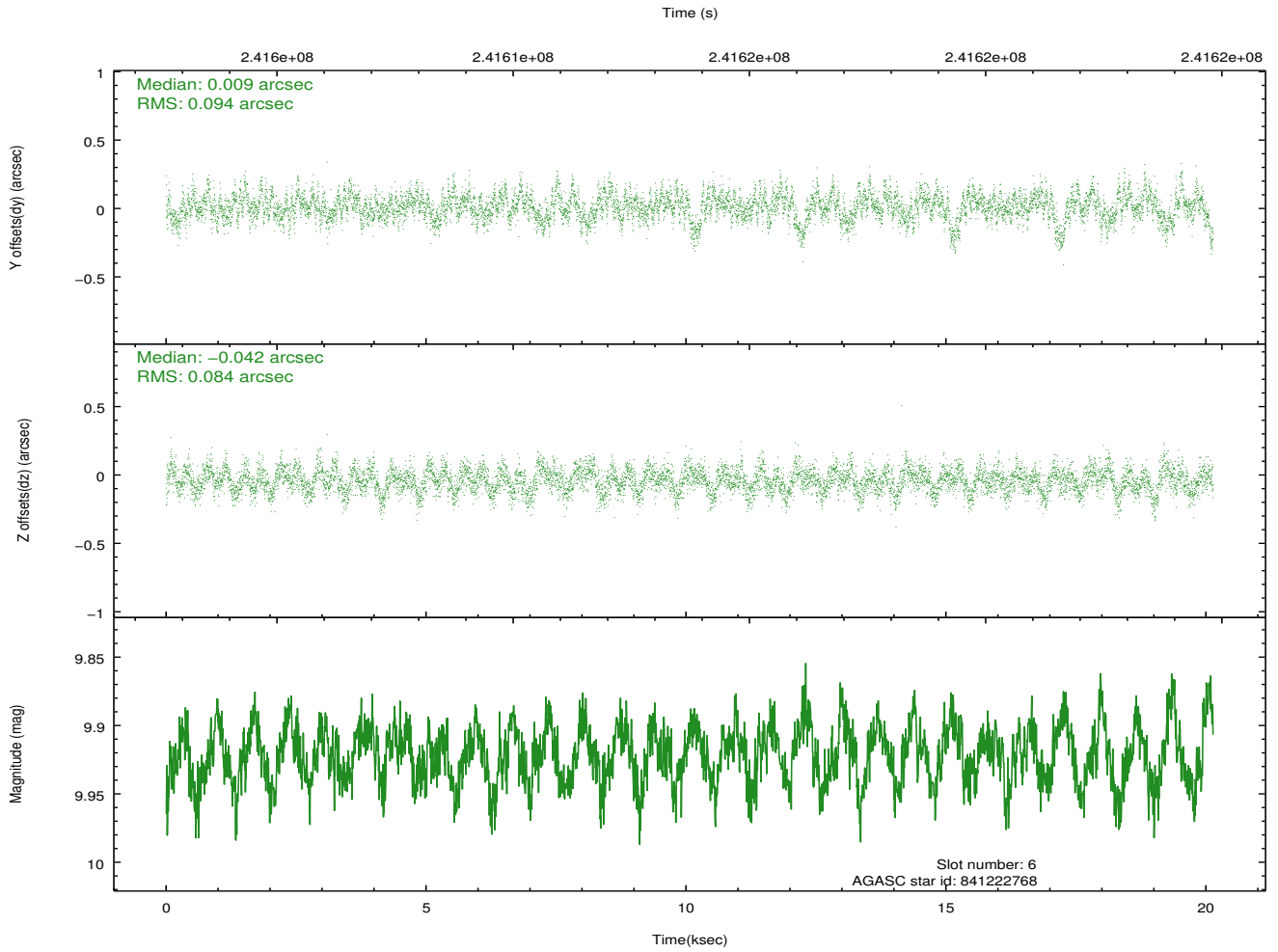
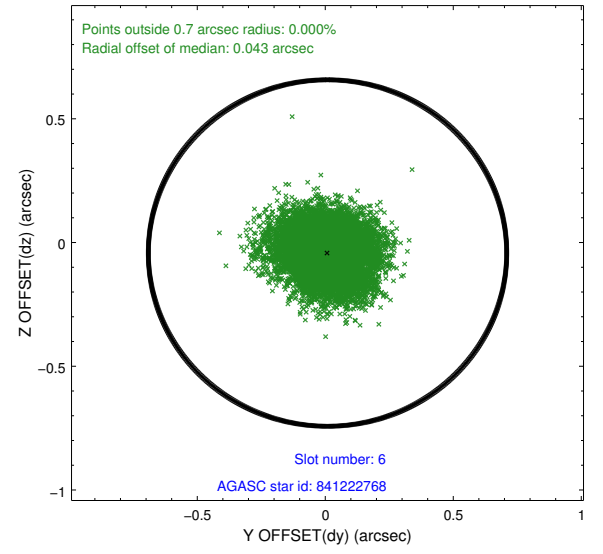
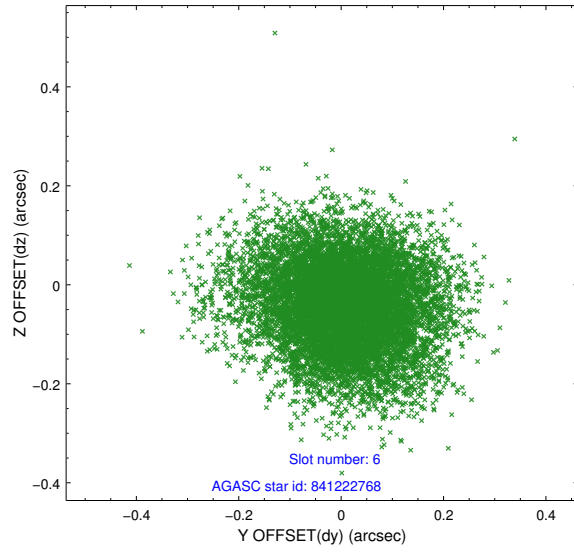
2.4.2 Slot 4



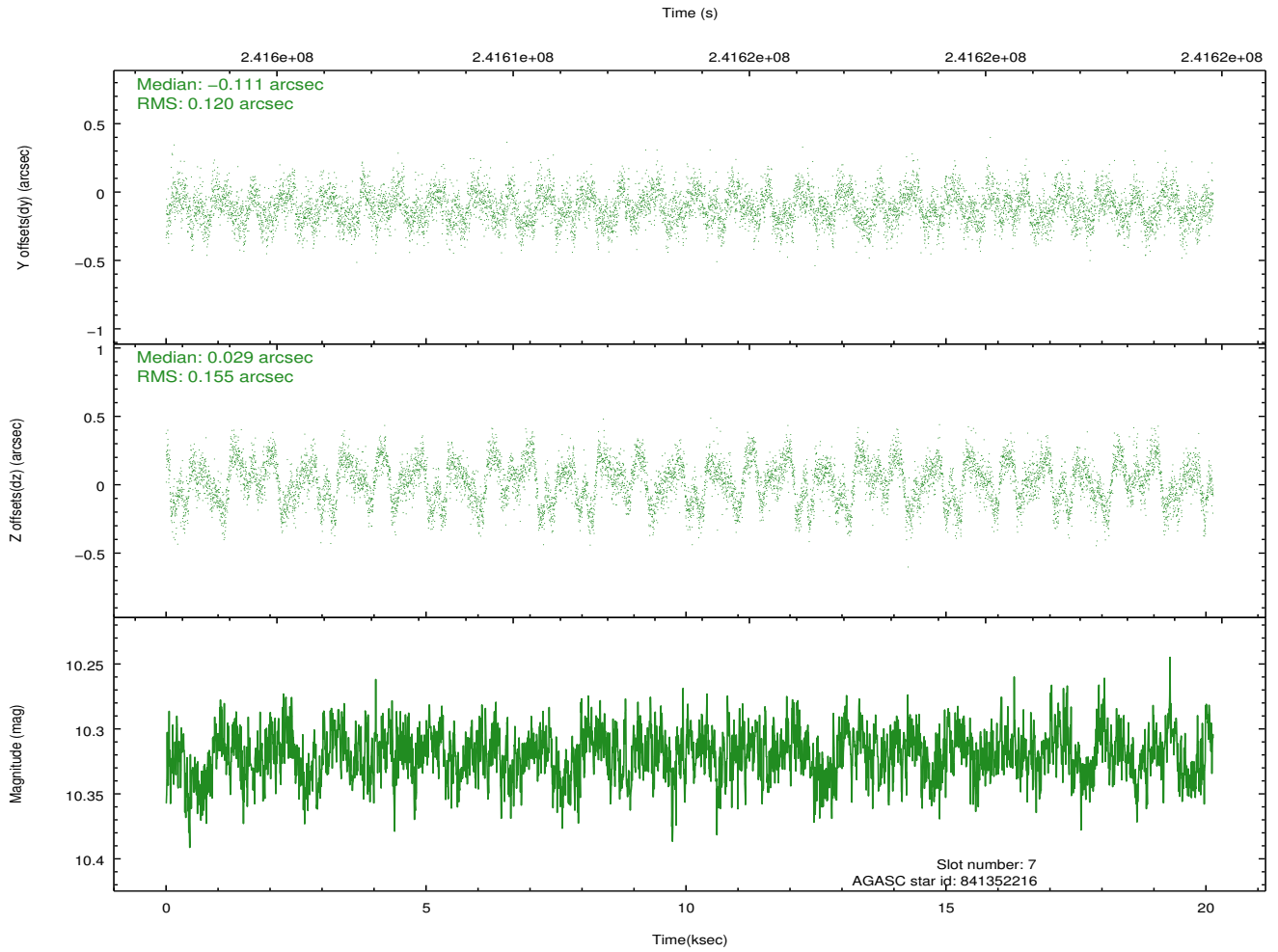
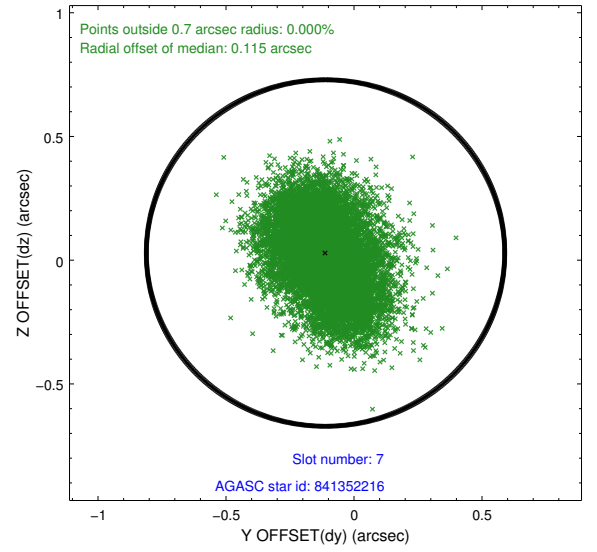
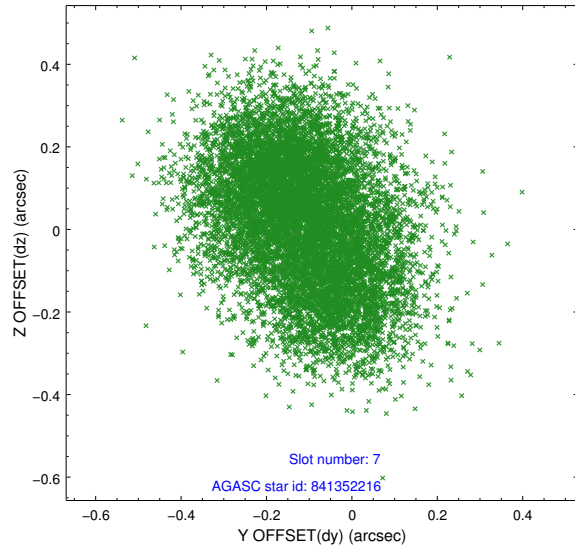
2.4.3 Slot 5



2.4.4 Slot 6

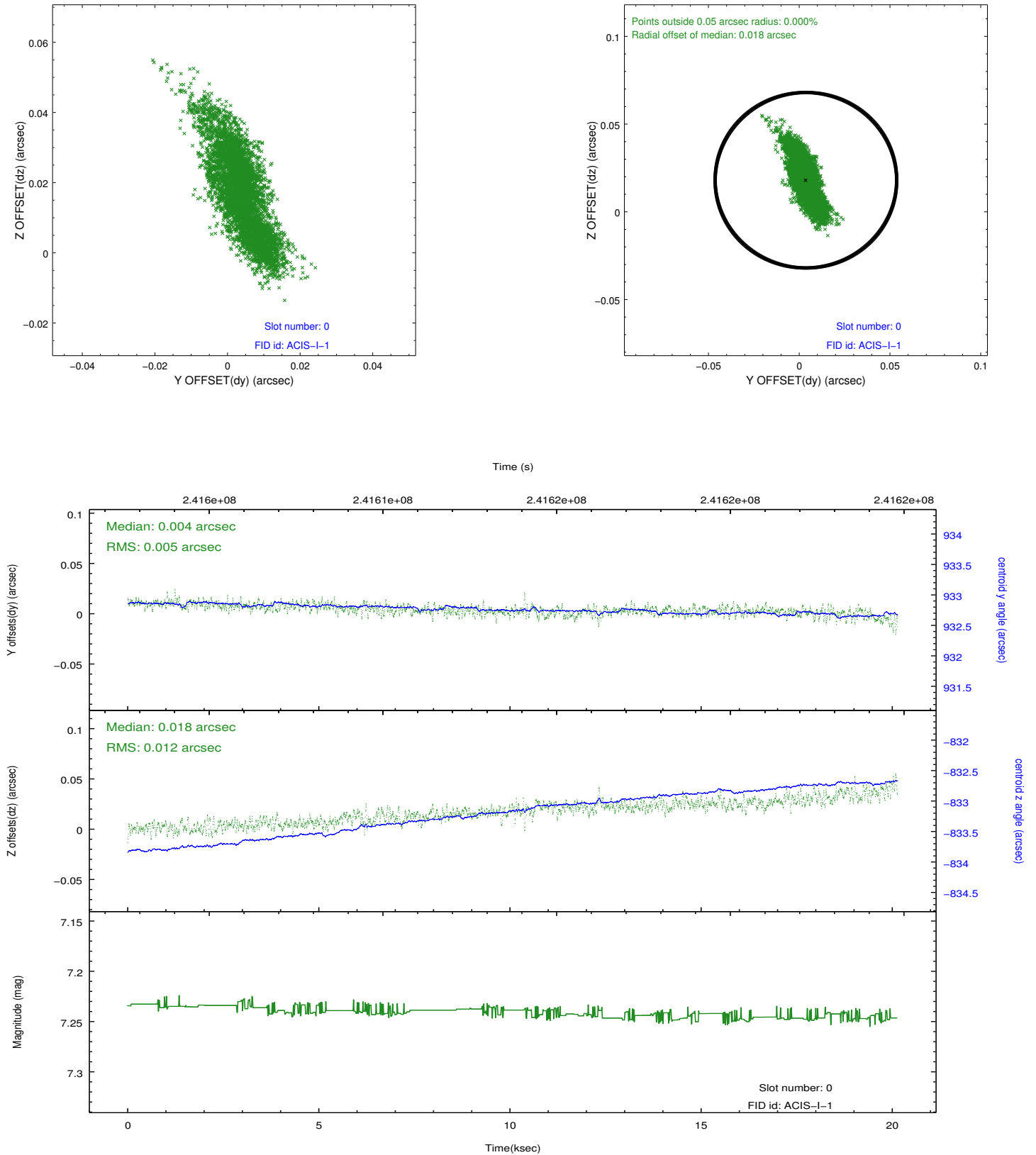


2.4.5 Slot 7

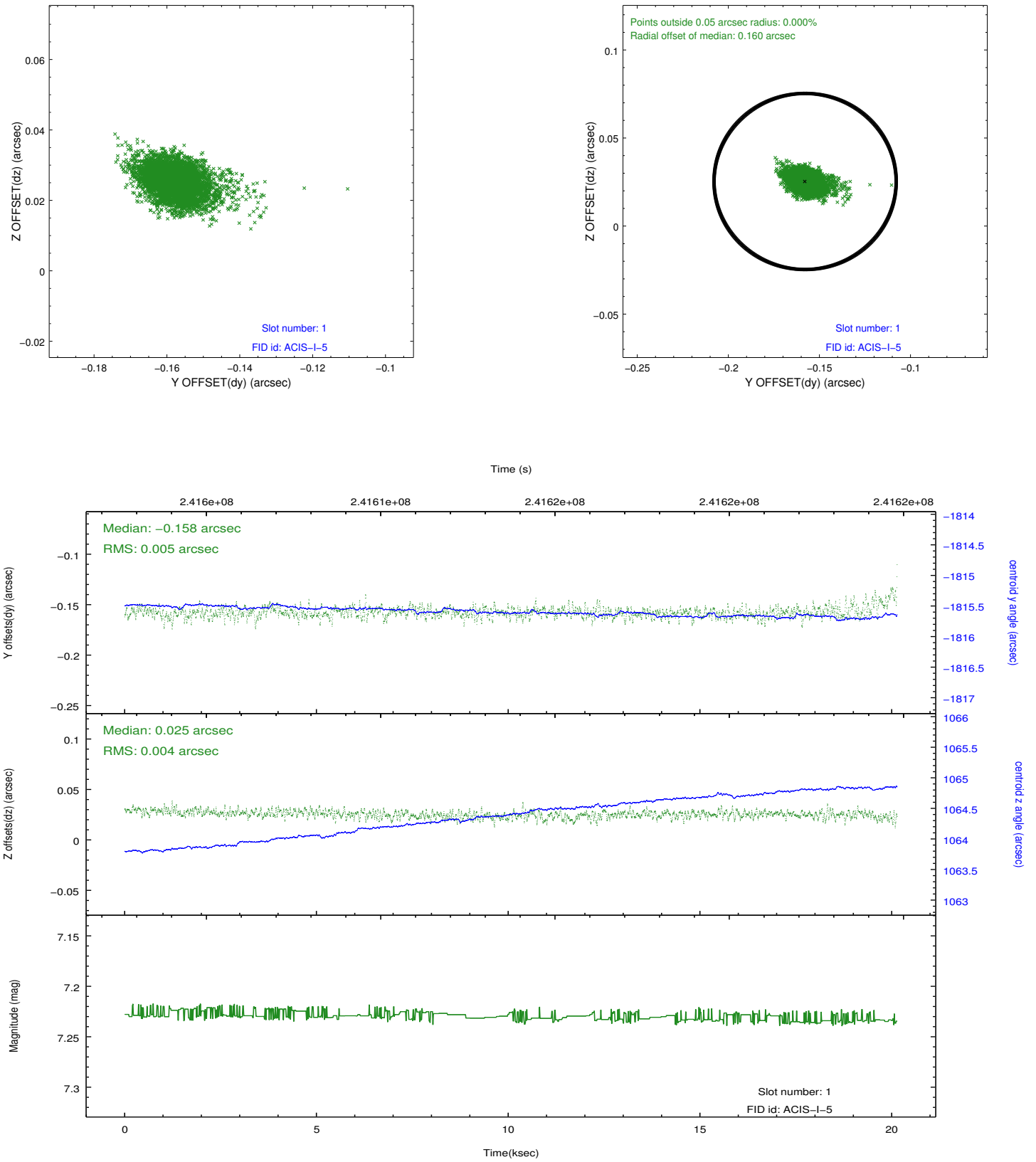


2.5 FID Slots

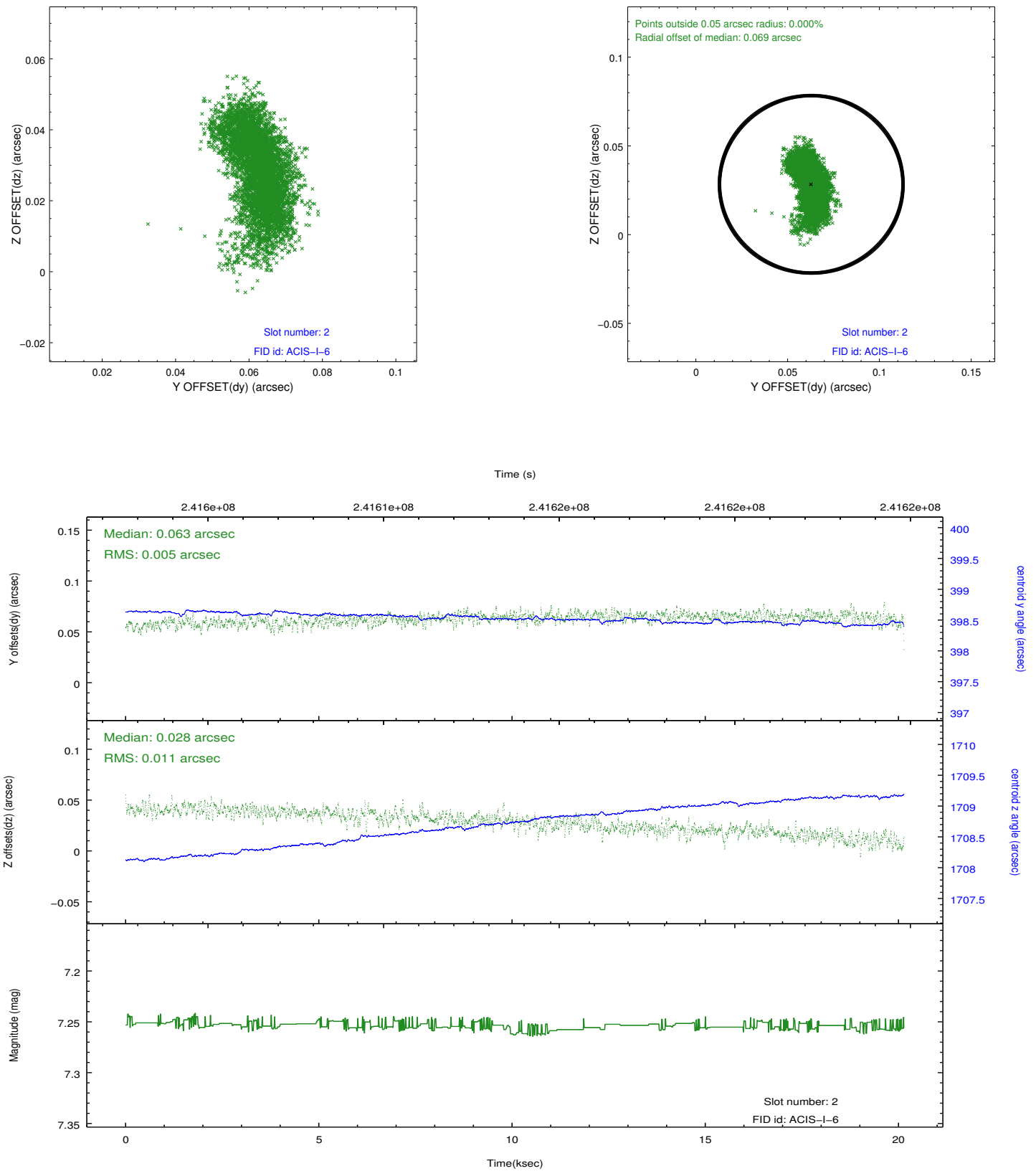
2.5.1 Slot 0



2.5.2 Slot 1



2.5.3 Slot 2



A Summary

A.1 Status

V&V Scientist	Jen Lauer
V&V Date (YYYY-MM-DD)	2013.01.24
V&V Edition	1
V&V Disposition and Status	OK
V&V Charge Time	20.13135

A.2 Comments