

V&V Reference Report

L2 ASCDS Version : 8.4.4

Observation 57927 - L2 Version 2
Chandra X-Ray Center

L2 Processing Date : May 11 2012

Contents

1	Front	2
2	OBI	3
2.1	OBI	3
2.1.1	Images	3
2.1.2	Bias	3
2.1.3	Parameters	4
2.1.4	Events	4
2.2	Compared Parameters	5
2.3	Star Slots	6
2.4	FID Slots	6
A	Summary	7
A.1	Status	7
A.2	Comments	7

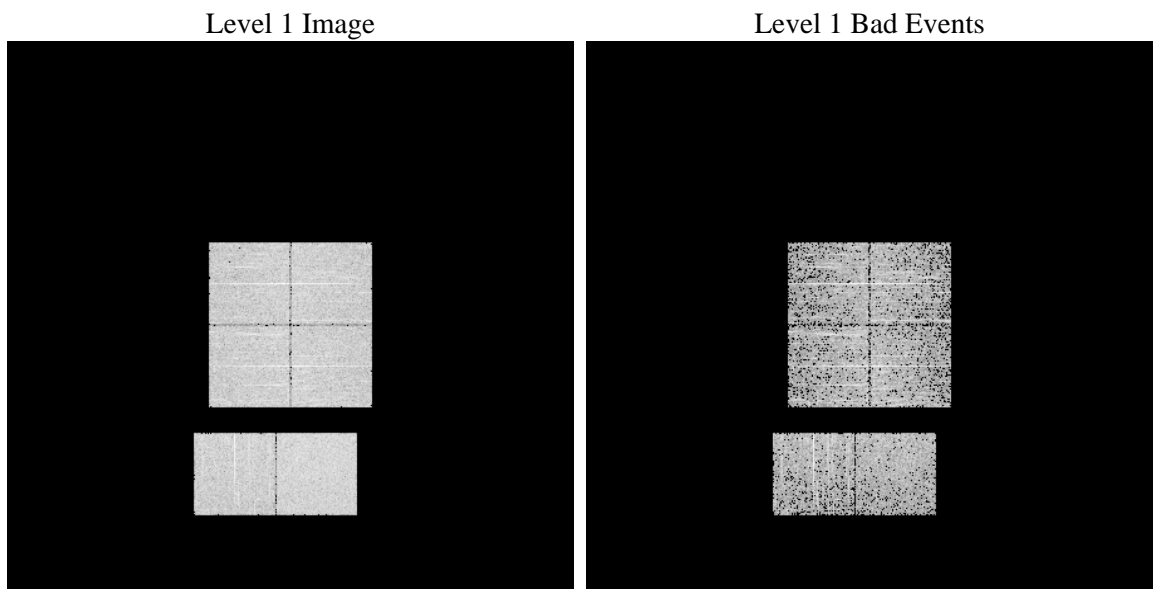
1 Front

seq_num	 	Sequence number
obs_id	57927	Observation id
title	ACIS-012367 diagnostics	Proposal title
observer	CHANDRA engineering request/realtime commanding	Principal investig
object	 	Source name
dtcycle	0	
cycle	P	events from which exps? Prim/Second/Both
ra_targ	0.0	Observer's specified target RA [deg]
dec_targ	0.0	Observer's specified target Dec [deg]
ra_nom	294.98026673267	Nominal RA [deg]
dec_nom	-6.9755326665636	Nominal Dec [deg]
roll_nom	89.720783006278	Nominal Roll [deg]
revision	2	Processing version of data
ontime	1907.4028292298	Sum of GTIs [s]
livetime	1883.250146106	Livetime [s]
ontime0	1907.4438492656	Sum of GTIs [s]
ontime1	1907.4848892689	Sum of GTIs [s]
ontime2	1907.5259492397	Sum of GTIs [s]
ontime3	1907.361769259	Sum of GTIs [s]
ontime6	1910.3999929428	Sum of GTIs [s]
ontime7	1907.4028292298	Sum of GTIs [s]
l2events	144927	Number of level 2 events

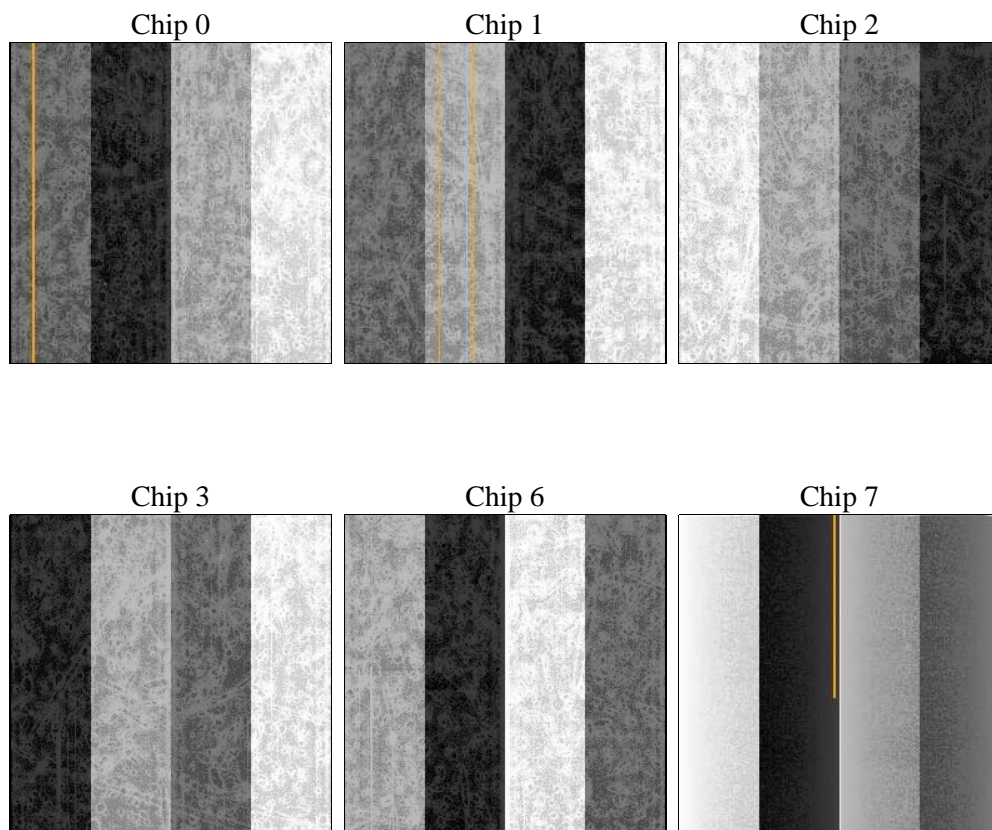
2 OBI

2.1 OBI

2.1.1 Images



2.1.2 Bias



2.1.3 Parameters

obi_num	0	Obi number	sched_exp_time	0.0	[s] Scheduled observation exposure time
ascdsver	8.4.4	Processing system revision	ontime	1907.4028292298	Sum of GTIs [s]
caldsver	4.4.9	 	ontime0	1907.4438492656	Sum of GTIs [s]
date	2012-05-11T03:58:01	Date and time of file creation	ontime1	1907.4848892689	Sum of GTIs [s]
revision	2	Processing version of data	ontime2	1907.5259492397	Sum of GTIs [s]
			ontime3	1907.361769259	Sum of GTIs [s]
			ontime6	1910.3999929428	Sum of GTIs [s]
			ontime7	1907.4028292298	Sum of GTIs [s]
			l1events	245489	Number of level 1 events

2.1.4 Events

	ccd 0	ccd 1	ccd 2	ccd 3	ccd 6	ccd 7		ccd 0	ccd 1	ccd 2	ccd 3	ccd 6	ccd 7
level 1 events	38269	39268	40412	39991	41186	46363	grade 0 events	12809	12542	13329	13229	13252	6658
rejected events	14372	15464	16412	15857	16084	14398		33%	31%	32%	33%	32%	14%
rejected %	37%	39%	40%	39%	39%	31%	grade 1 events	88	73	112	96	72	48
								0%	0%	0%	0%	0%	0%
							grade 2 events	4376	4302	3993	4166	4498	7038
								11%	10%	9%	10%	10%	15%
							grade 3 events	1540	1595	1593	1603	1637	3031
								4%	4%	3%	4%	3%	6%
							grade 4 events	1524	1609	1594	1623	1627	3034
								3%	4%	3%	4%	3%	6%
							grade 5 events	871	913	800	948	1000	2406
								2%	2%	1%	2%	2%	5%
							grade 6 events	3648	3756	3491	3513	4088	12204
								9%	9%	8%	8%	9%	26%
							grade 7 events	13413	14478	15500	14813	15012	11944
								35%	36%	38%	37%	36%	25%

2.2 Compared Parameters

Parameter	Planned	Actual
Instrument	ACIS	ACIS
Detector	ACIS-012367	ACIS-012367
Grating	NONE	NONE
Data mode	FAINT	FAINT
Observation mode	SECONDARY	SECONDARY
[deg] Pointing RA	0	294.9802667326747
[deg] Pointing Dec	0	-6.975532666563571
[deg] Pointing Roll	0.0	89.72078300627844
[mm] SIM focus pos	-0.782348	-0.7809083437167272
[mm] SIM defocus	0	0.7524282956875696
[mm] SIM translation stage pos	-233.592463	250.466033080201
[mm] SIM translation stage offset	0	-0.01005468664627074
[s] Observation start time (MET)	321447298.452325	321447297.42731
Observation start date	2008-03-09T10:54:58	2008-03-09T10:54:57
[s] Observation end time (MET)	321451865.852547	321451864.82753
Observation end date	2008-03-09T12:11:06	2008-03-09T12:11:04
Read mode	TIMED	TIMED

Parameter	Planned	Actual
Obspar format version number	7	7
Obspar file type	PREDICTED	ACTUAL
Obspar update status	NONE	UPDATED
On-chip summing requested	N	N
Subarray requested	NONE	NONE
Alternating exposures requested	N	N
[s] Primary exposure time	3.2	3.2

2.3 Star Slots

2.4 FID Slots

A Summary

A.1 Status

V&V Scientist	Beth Sundheim
V&V Date (YYYY-MM-DD)	2012.05.14
V&V Edition	1
V&V Disposition and Status	OK
V&V Charge Time	1.9074028292298

A.2 Comments