

V&V Reference Report

L2 ASCDS Version : 8.4.4

Observation 57727 - L2 Version 2
Chandra X-Ray Center

L2 Processing Date : May 17 2012

Contents

1	Front	2
2	OBI	3
2.1	OBI	3
2.1.1	Images	3
2.1.2	Bias	3
2.1.3	Parameters	4
2.1.4	Events	4
2.2	Compared Parameters	5
2.3	Star Slots	6
2.4	FID Slots	6
A	Summary	7
A.1	Status	7
A.2	Comments	7

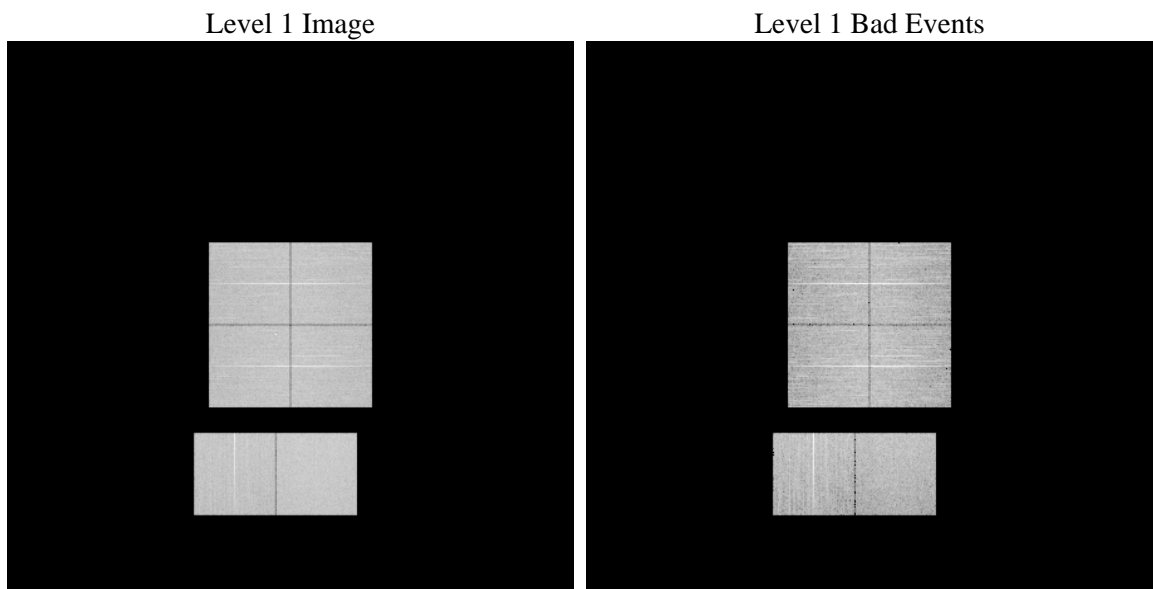
1 Front

seq_num	 	Sequence number
obs_id	57727	Observation id
title	ACIS-012367 diagnostics	Proposal title
observer	CHANDRA engineering request/realtime commanding	Principal investig
object	 	Source name
dtcycle	0	
cycle	P	events from which exps? Prim/Second/Both
ra_targ	0.0	Observer's specified target RA [deg]
dec_targ	0.0	Observer's specified target Dec [deg]
ra_nom	296.0015787131	Nominal RA [deg]
dec_nom	-26.969832566552	Nominal Dec [deg]
roll_nom	78.036247413928	Nominal Roll [deg]
revision	2	Processing version of data
ontime	9129.5999660492	Sum of GTIs [s]
livetime	9013.995474094	Livetime [s]
ontime0	9129.5999660492	Sum of GTIs [s]
ontime1	9129.5999660492	Sum of GTIs [s]
ontime2	9129.5999660492	Sum of GTIs [s]
ontime3	9129.5999660492	Sum of GTIs [s]
ontime6	9129.5999660492	Sum of GTIs [s]
ontime7	9129.5999660492	Sum of GTIs [s]
l2events	643431	Number of level 2 events

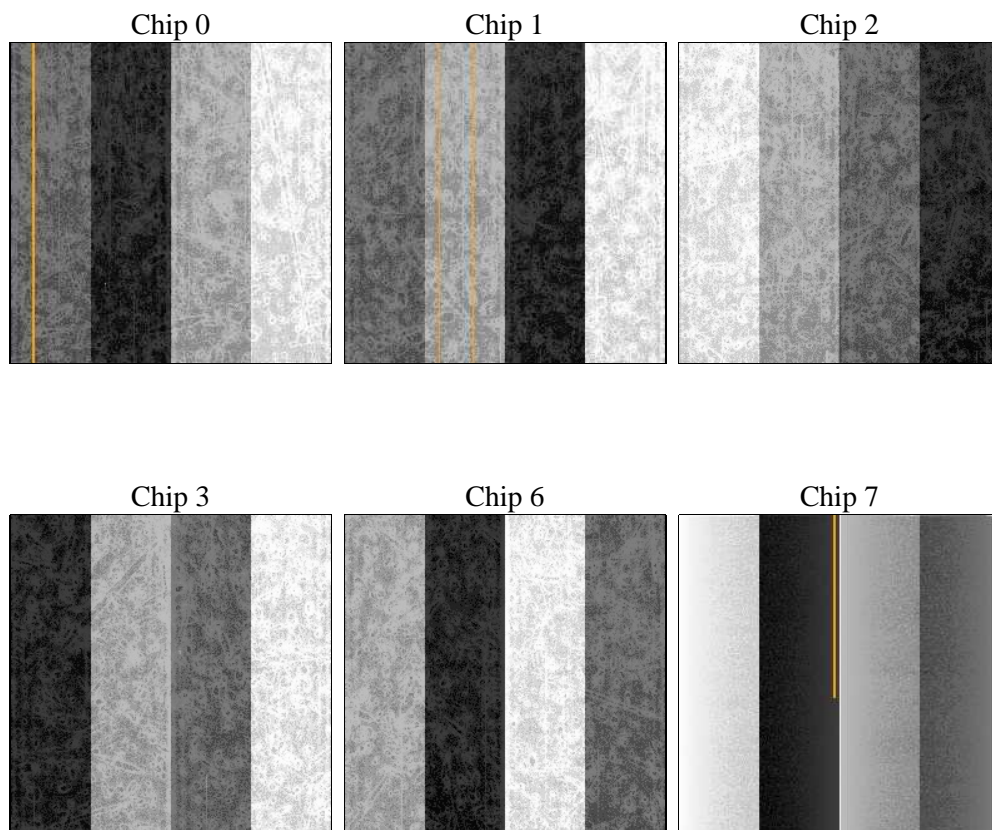
2 OBI

2.1 OBI

2.1.1 Images



2.1.2 Bias



2.1.3 Parameters

obi_num	0	Obi number	sched_exp_time	0.0	[s] Scheduled observation exposure time
ascdsver	8.4.4	Processing system revision	ontime	9129.5999660492	Sum of GTIs [s]
caldsver	4.4.9	 	ontime0	9129.5999660492	Sum of GTIs [s]
date	2012-05-17T15:57:38	Date and time of file creation	ontime1	9129.5999660492	Sum of GTIs [s]
revision	2	Processing version of data	ontime2	9129.5999660492	Sum of GTIs [s]
			ontime3	9129.5999660492	Sum of GTIs [s]
			ontime6	9129.5999660492	Sum of GTIs [s]
			ontime7	9129.5999660492	Sum of GTIs [s]
			l1events	1143748	Number of level 1 events

2.1.4 Events

	ccd 0	ccd 1	ccd 2	ccd 3	ccd 6	ccd 7		ccd 0	ccd 1	ccd 2	ccd 3	ccd 6	ccd 7
level 1 events	179136	182663	185640	186843	192679	216787	grade 0 events	56649	57341	58330	58449	58457	29167
rejected events	74247	75546	79706	80715	81953	72255		31%	31%	31%	31%	30%	13%
rejected %	41%	41%	42%	43%	42%	33%	grade 1 events	393	333	485	417	332	191
								0%	0%	0%	0%	0%	0%
							grade 2 events	18775	19452	18145	18460	19759	31379
								10%	10%	9%	9%	10%	14%
							grade 3 events	7101	7061	7183	7130	7075	13834
								3%	3%	3%	3%	3%	6%
							grade 4 events	6844	7051	7087	7151	7288	13743
								3%	3%	3%	3%	3%	6%
							grade 5 events	4228	4440	4046	4891	4821	12141
								2%	2%	2%	2%	2%	5%
							grade 6 events	15552	16241	15223	14978	18183	56454
								8%	8%	8%	8%	9%	26%
							grade 7 events	69594	70744	75141	75367	76764	59878
								38%	38%	40%	40%	39%	27%

2.2 Compared Parameters

Parameter	Planned	Actual	Parameter	Planned	Actual
Instrument	ACIS	ACIS	Obspar format version number	7	7
Detector	ACIS-012367	ACIS-012367	Obspar file type	PREDICTED	ACTUAL
Grating	NONE	NONE	Obspar update status	NONE	UPDATED
Data mode	FAINT	FAINT	On-chip summing requested	N	N
Observation mode	SECONDARY	SECONDARY	Subarray requested	NONE	NONE
[deg] Pointing RA	0	296.0015787131008	Alternating exposures requested	N	N
[deg] Pointing Dec	0	-26.96983256655199	[s] Primary exposure time	3.2	3.2
[deg] Pointing Roll	0.0	78.03624741392811			
[mm] SIM focus pos	-1.429586	-0.7809083437167272			
[mm] SIM defocus	0.1037507710433287	0.7524282956875696			
[mm] SIM translation stage pos	250.455976	250.466033080201			
[mm] SIM translation stage offset	0	-0.01005468664627074			
[s] Observation start time (MET)	331266276.181008	331266275.15601			
Observation start date	2008-07-01T02:24:36	2008-07-01T02:24:35			
[s] Observation end time (MET)	331277688.531566	331277687.50657			
Observation end date	2008-07-01T05:34:49	2008-07-01T05:34:47			
Read mode	TIMED	TIMED			

2.3 Star Slots

2.4 FID Slots

A Summary

A.1 Status

V&V Scientist	Beth Sundheim
V&V Date (YYYY-MM-DD)	2012.05.23
V&V Edition	1
V&V Disposition and Status	OK
V&V Charge Time	9.1295999660492

A.2 Comments