

V&V Reference Report

L2 ASCDS Version : 8.4.4

Observation 57447 - L2 Version 2
Chandra X-Ray Center

L2 Processing Date : May 26 2012

Contents

1	Front	2
2	OBI	3
2.1	OBI	3
2.1.1	Images	3
2.1.2	Bias	3
2.1.3	Parameters	4
2.1.4	Events	4
2.2	Compared Parameters	5
2.3	Star Slots	6
2.4	FID Slots	6
A	Summary	7
A.1	Status	7
A.2	Comments	7

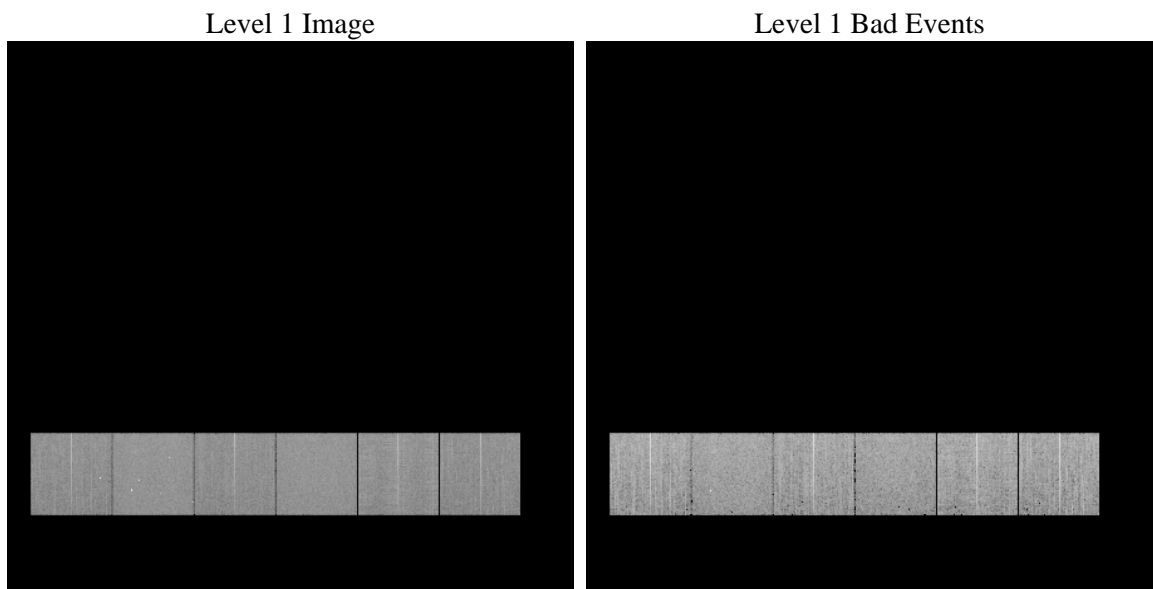
1 Front

seq_num	 	Sequence number
obs_id	57447	Observation id
title	ACIS-456789 diagnostics	Proposal title
observer	CHANDRA engineering request/realtime commanding	Principal investig
object	 	Source name
dtcycle	0	
cycle	P	events from which exps? Prim/Second/Both
ra_targ	0.0	Observer's specified target RA [deg]
dec_targ	0.0	Observer's specified target Dec [deg]
ra_nom	65.028361225114	Nominal RA [deg]
dec_nom	5.9949078741329	Nominal Dec [deg]
roll_nom	316.90120115768	Nominal Roll [deg]
revision	2	Processing version of data
ontime	6203.9323903322	Sum of GTIs [s]
livetime	6125.3744628462	Livetime [s]
ontime4	6203.8092703223	Sum of GTIs [s]
ontime5	6203.8913503289	Sum of GTIs [s]
ontime6	6203.8503103256	Sum of GTIs [s]
ontime7	6203.9323903322	Sum of GTIs [s]
ontime8	6203.768230319	Sum of GTIs [s]
ontime9	6203.9734303355	Sum of GTIs [s]
l2events	421783	Number of level 2 events

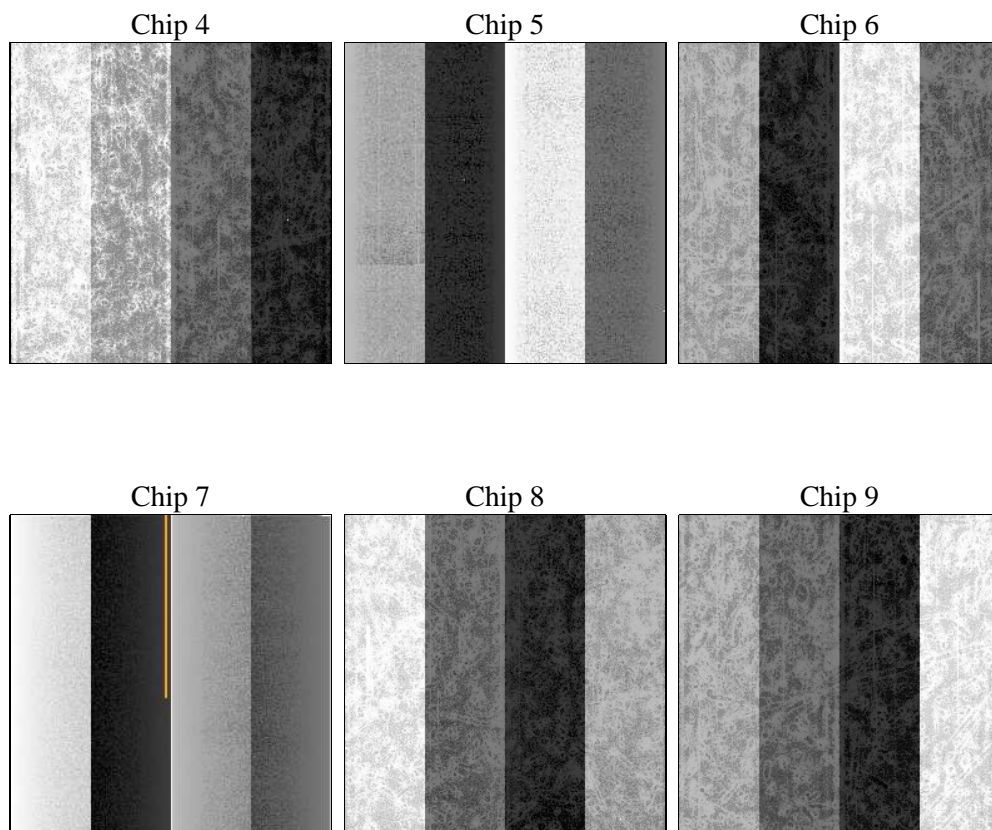
2 OBI

2.1 OBI

2.1.1 Images



2.1.2 Bias



2.1.3 Parameters

obi_num	0	Obi number	sched_exp_time	0.0	[s] Scheduled observation exposure time
ascdsver	8.4.4	Processing system revision	ontime	6203.9323903322	Sum of GTIs [s]
caldbver	4.4.9	 	ontime4	6203.8092703223	Sum of GTIs [s]
date	2012-05-26T06:06:45	Date and time of file creation	ontime5	6203.8913503289	Sum of GTIs [s]
revision	2	Processing version of data	ontime6	6203.8503103256	Sum of GTIs [s]
			ontime7	6203.9323903322	Sum of GTIs [s]
			ontime8	6203.768230319	Sum of GTIs [s]
			ontime9	6203.9734303355	Sum of GTIs [s]
			l1events	818454	Number of level 1 events

2.1.4 Events

	ccd 4	ccd 5	ccd 6	ccd 7	ccd 8	ccd 9		ccd 4	ccd 5	ccd 6	ccd 7	ccd 8	ccd 9
level 1 events	128627	148599	126331	145668	141867	127362	grade 0 events	37457	14274	35319	17769	38642	35061
rejected events	63833	55764	59447	52819	63656	62213		29%	9%	27%	12%	27%	27%
rejected %	49%	37%	47%	36%	44%	48%	grade 1 events	349	181	249	125	248	287
								0%	0%	0%	0%	0%	0%
							grade 2 events	10246	33249	11773	20268	14466	11504
								7%	22%	9%	13%	10%	9%
							grade 3 events	4475	4299	4347	8656	5662	4435
								3%	2%	3%	5%	3%	3%
							grade 4 events	4424	4325	4340	8457	5750	4343
								3%	2%	3%	5%	4%	3%
							grade 5 events	3261	7575	3386	8530	4322	3658
								2%	5%	2%	5%	3%	2%
							grade 6 events	8235	36749	11141	37751	13731	9836
								6%	24%	8%	25%	9%	7%
							grade 7 events	60180	47947	55776	44112	59046	58238
								46%	32%	44%	30%	41%	45%

2.2 Compared Parameters

Parameter	Planned	Actual	Parameter	Planned	Actual
Instrument	ACIS	ACIS	Obspar format version number	7	7
Detector	ACIS-456789	ACIS-456789	Obspar file type	PREDICTED	ACTUAL
Grating	NONE	NONE	Obspar update status	NONE	UPDATED
Data mode	FAINT	FAINT	Number of optional ACIS chips dropped	0	0
Observation mode	SECONDARY	SECONDARY	On-chip summing requested	N	N
[deg] Pointing RA	0	65.02836122511445	Subarray requested	NONE	NONE
[deg] Pointing Dec	0	5.994907874132902	Alternating exposures requested	N	N
[deg] Pointing Roll	0.0	316.9012011576831	[s] Primary exposure time	3.2	3.2
[mm] SIM focus pos	-1.429586	-0.6828225247311905			
[mm] SIM defocus	0.1037507710433287	0.8505141146731063			
[mm] SIM translation stage pos	250.455976	250.466033080201			
[mm] SIM translation stage offset	0	-0.01005468664627074			
[s] Observation start time (MET)	345708495.40115	345708494.37615			
Observation start date	2008-12-15T06:08:15	2008-12-15T06:08:14			
[s] Observation end time (MET)	345715225.551483	345715224.52648			
Observation end date	2008-12-15T08:00:26	2008-12-15T08:00:24			
Read mode	TIMED	TIMED			

2.3 Star Slots

2.4 FID Slots

A Summary

A.1 Status

V&V Scientist	Jen Lauer
V&V Date (YYYY-MM-DD)	2012.06.01
V&V Edition	1
V&V Disposition and Status	OK
V&V Charge Time	6.2039323903322

A.2 Comments