

V&V Reference Report

L2 ASCDS Version : 7.6.7.1

Observation 5617 - L2 Version 002
Chandra X-Ray Center

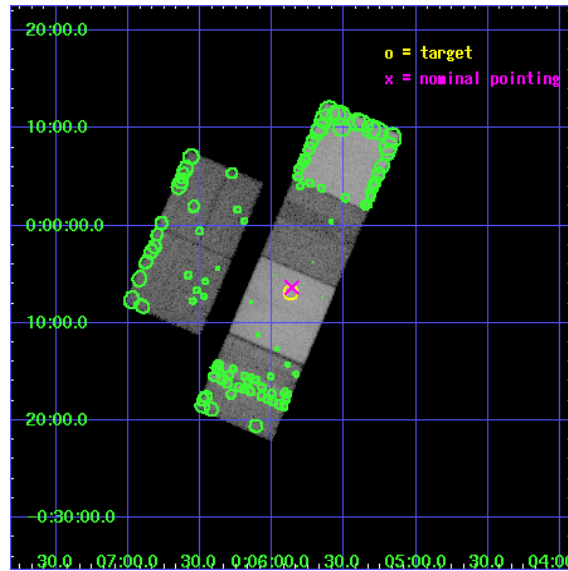
L2 Processing Date : Mar 15 2006

Contents

1	Front	2
2	OBI	3
2.1	OBI	3
2.1.1	Images	3
2.1.2	Bias	3
2.1.3	Parameters	4
2.1.4	Events	4
2.2	Compared Parameters	5
2.3	Aspect	6
2.4	Star Slots	9
2.4.1	Slot 3	9
2.4.2	Slot 4	10
2.4.3	Slot 5	11
2.4.4	Slot 6	12
2.4.5	Slot 7	13
2.5	FID Slots	14
2.5.1	Slot 0	14
2.5.2	Slot 1	15
2.5.3	Slot 2	16
3	Point Sources	17
A	Summary	18
A.1	Status	18
A.2	Comments	18

1 Front

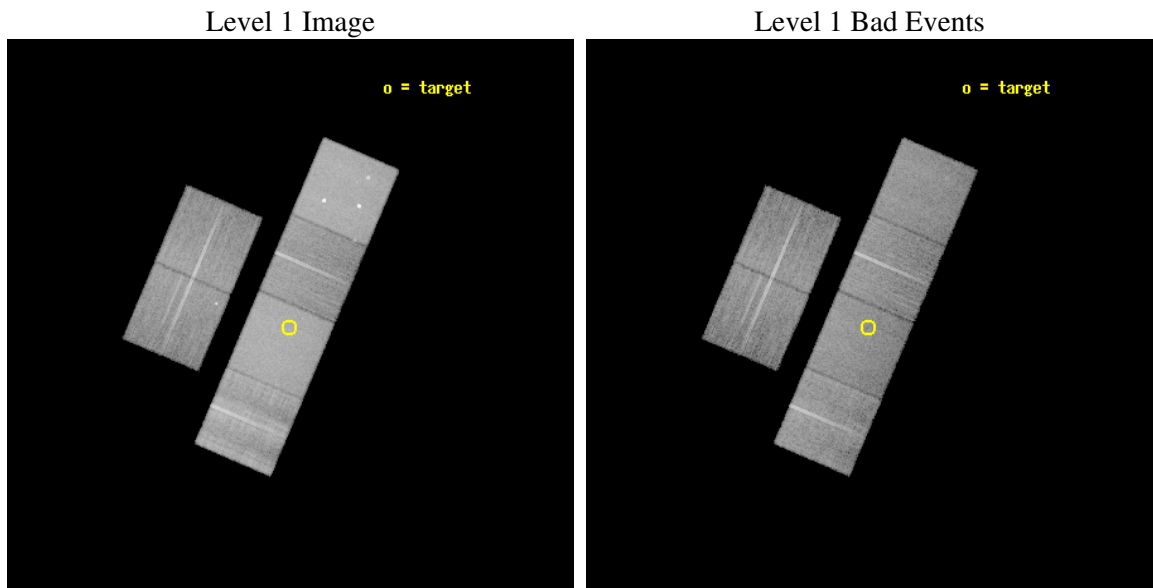
seq_num	701040
obs_id	5617
title	A Chandra Survey of the Most Distant Quasars: X-raying the First Massive Black Holes
observer	Prof. William Brandt
object	SDSS J0005-0006
dtcycle	0
cycle	P
ra_targ	1.467917
dec_targ	-0.1155
ra_nom	1.4657403202343
dec_nom	-0.10606428586418
roll_nom	113.07972840713
revision	2
ontime	17148.799936116
livetime	16931.651505557
ontime2	17148.799936116
ontime3	17148.799936116
ontime5	17148.799936116
ontime6	17148.799936116
ontime7	17148.799936116
ontime8	17148.799936116
l2events	414937



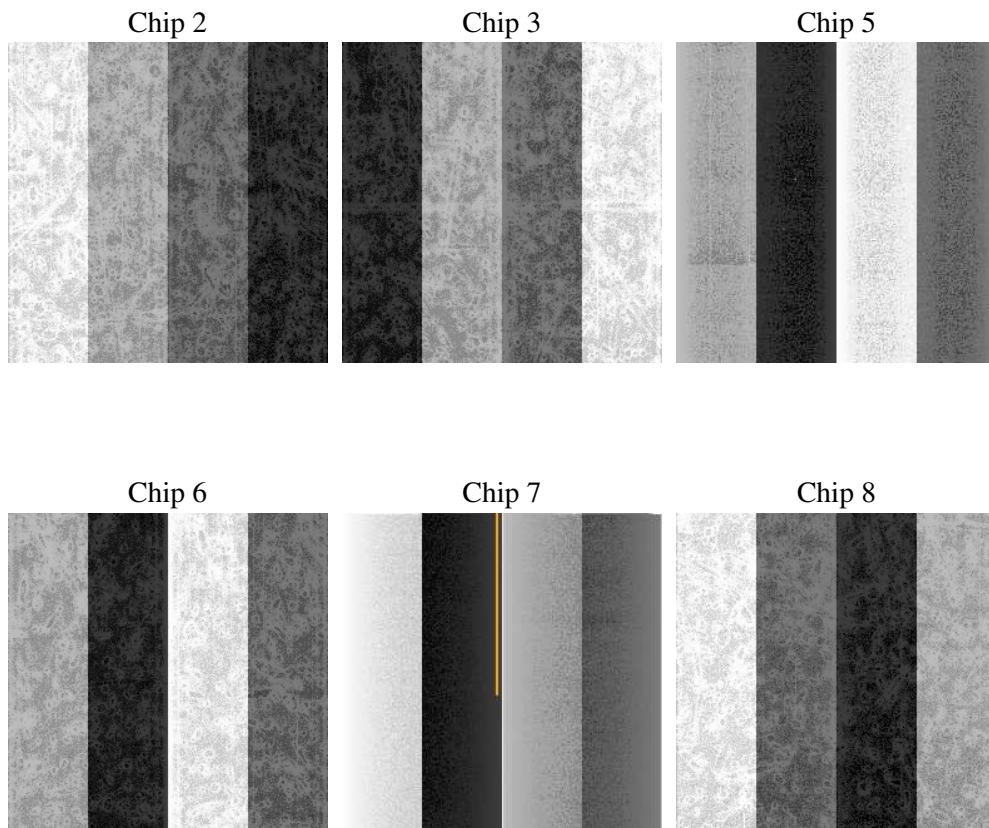
2 OBI

2.1 OBI

2.1.1 Images



2.1.2 Bias



2.1.3 Parameters

obi_num	3
ascdsver	7.6.7.1
caldsver	3.2.1
date	2006-03-15T23:35:23
revision	2

sched_exp_time	17194.092000
ontime	17154.671755522
ontime2	17154.671755522
ontime3	17154.671735615
ontime5	17154.671755522
ontime6	17154.671755522
ontime7	17154.671755522
ontime8	17154.671755522
l1events	1265403

2.1.4 Events

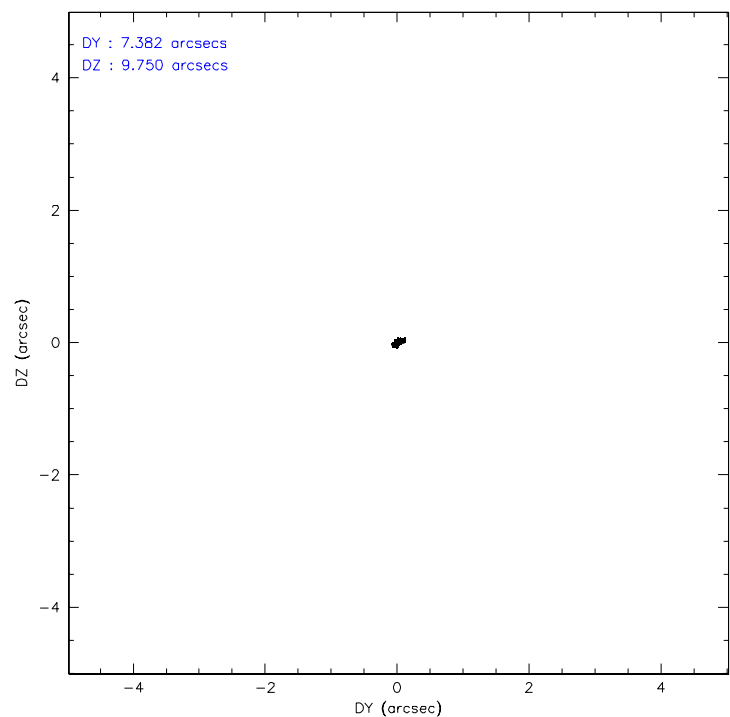
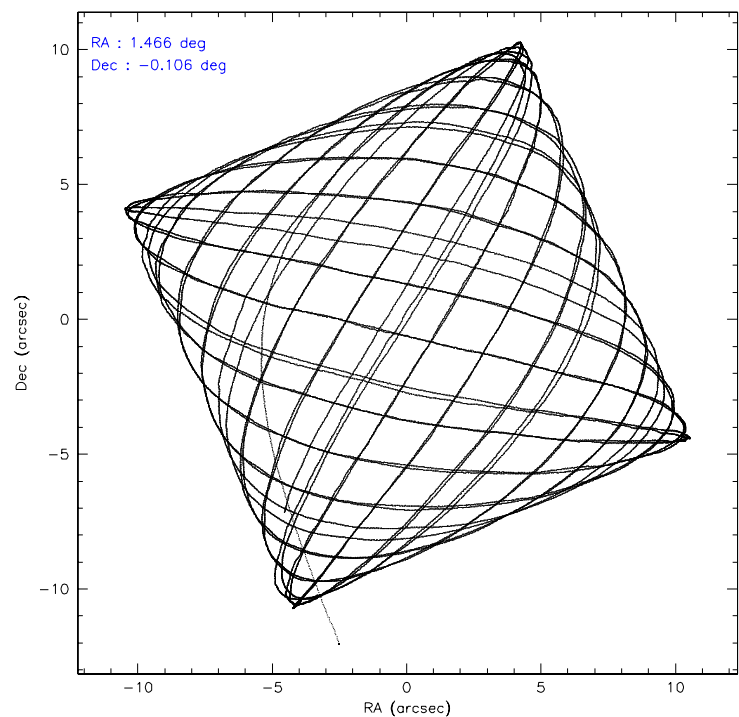
	ccd 2	ccd 3	ccd 5	ccd 6	ccd 7	ccd 8
level 1 events	165676	156991	278806	170700	256281	236949
rejected events	131216	123466	126085	133257	125172	148582
rejected %	79%	78%	45%	78%	48%	62%

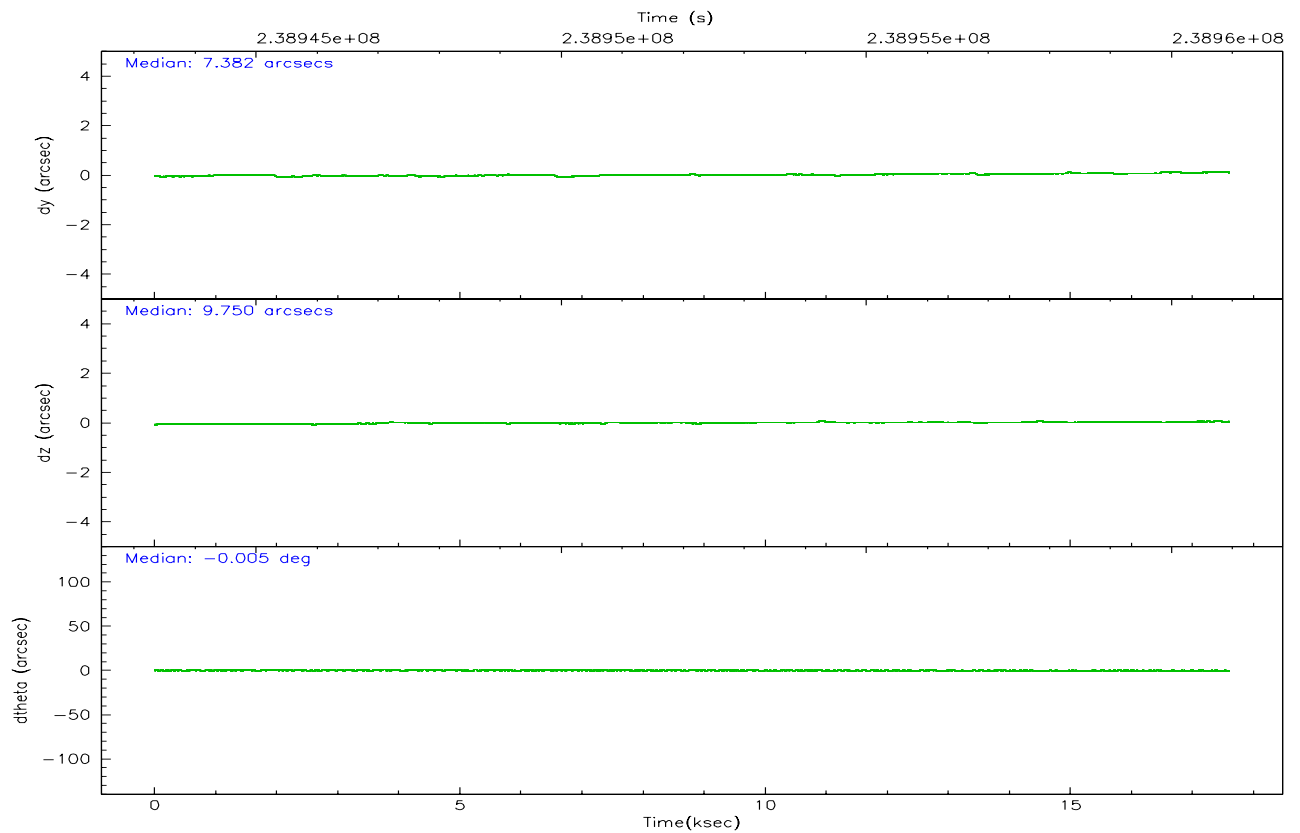
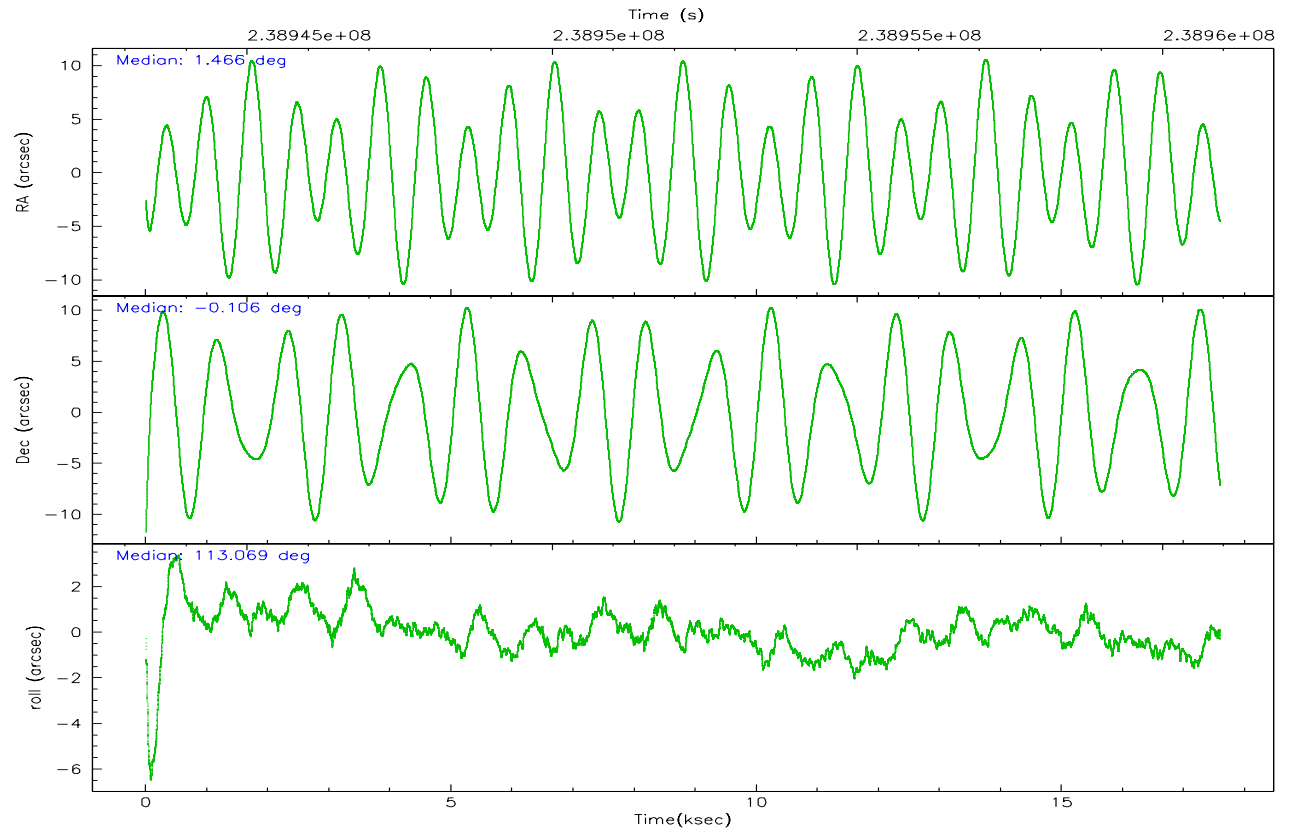
	ccd 2	ccd 3	ccd 5	ccd 6	ccd 7	ccd 8
grade 0 events	19740	19323	14892	20842	8740	34147
	11%	12%	5%	12%	3%	14%
grade 1 events	153	167	218	133	138	226
	0%	0%	0%	0%	0%	0%
grade 2 events	6351	5790	50247	7379	32221	16497
	3%	3%	18%	4%	12%	6%
grade 3 events	1985	2157	3779	2129	6238	9533
	1%	1%	1%	1%	2%	4%
grade 4 events	2257	2116	3610	2111	5998	8661
	1%	1%	1%	1%	2%	3%
grade 5 events	5375	6116	10711	6376	12310	8688
	3%	3%	3%	3%	4%	3%
grade 6 events	4146	4167	80371	5041	77986	19585
	2%	2%	28%	2%	30%	8%
grade 7 events	125669	117155	114978	126689	112650	139612
	75%	74%	41%	74%	43%	58%

2.2 Compared Parameters

Parameter	Planned	Actual	Parameter	Planned	Actual
Instrument	ACIS	ACIS	Obspar format version number	6	6
Detector	ACIS-235678	ACIS-235678	Obspar file type	PREDICTED	ACTUAL
Grating	NONE	NONE	Obspar update status	NONE	UPDATED
Data mode	FAINT	FAINT	On-chip summing requested	N	N
Observation mode	POINTING	POINTING	Subarray requested	NONE	NONE
Pointing RA	1.487736	1.465740320234331	Alternating exposures requested	N	N
Pointing Dec	-0.122137	-0.1060642858641754	Primary exposure time	0.000000	3.2
Pointing Roll	112.923145	113.0797284071251			
SIM focus pos (mm)	-0.684267	-0.6828225247311905			
SIM defocus (mm)	0	0.001444936568705701			
SIM translation stage pos (mm)	-190.132523	-190.1425803651734			
SIM translation stage offset (mm)	0	0.01005778216563158			
Observation start time	238943755.184000	238942682.44335			
Observation start date	2005-07-28T13:14:51	2005-07-28T12:58:02			
Observation end time	238960949.184000	238961170.3692			
Observation end date	2005-07-28T18:01:25	2005-07-28T18:06:10			
Read mode	TIMED	TIMED			

2.3 Aspect



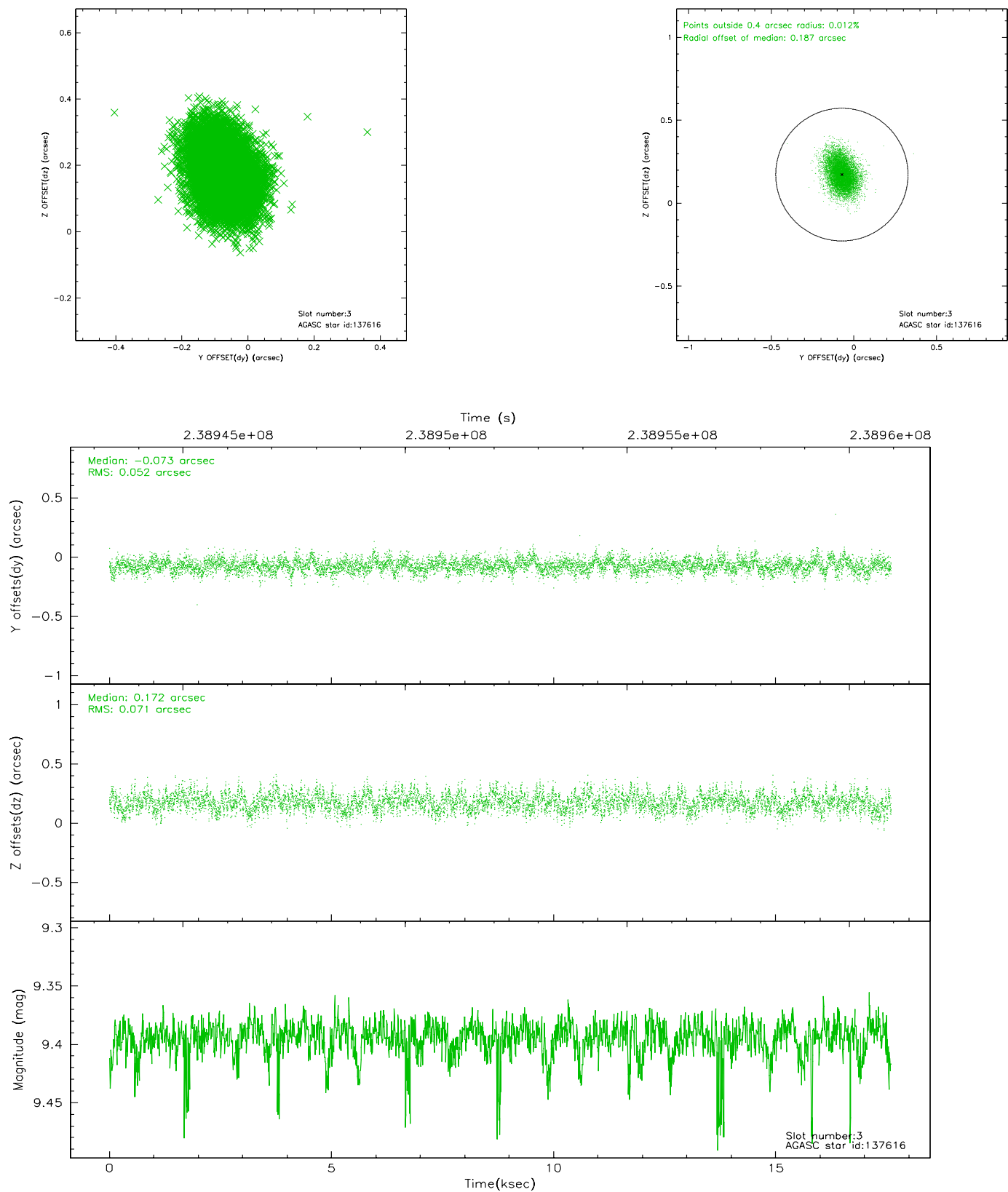


Slot Statistics

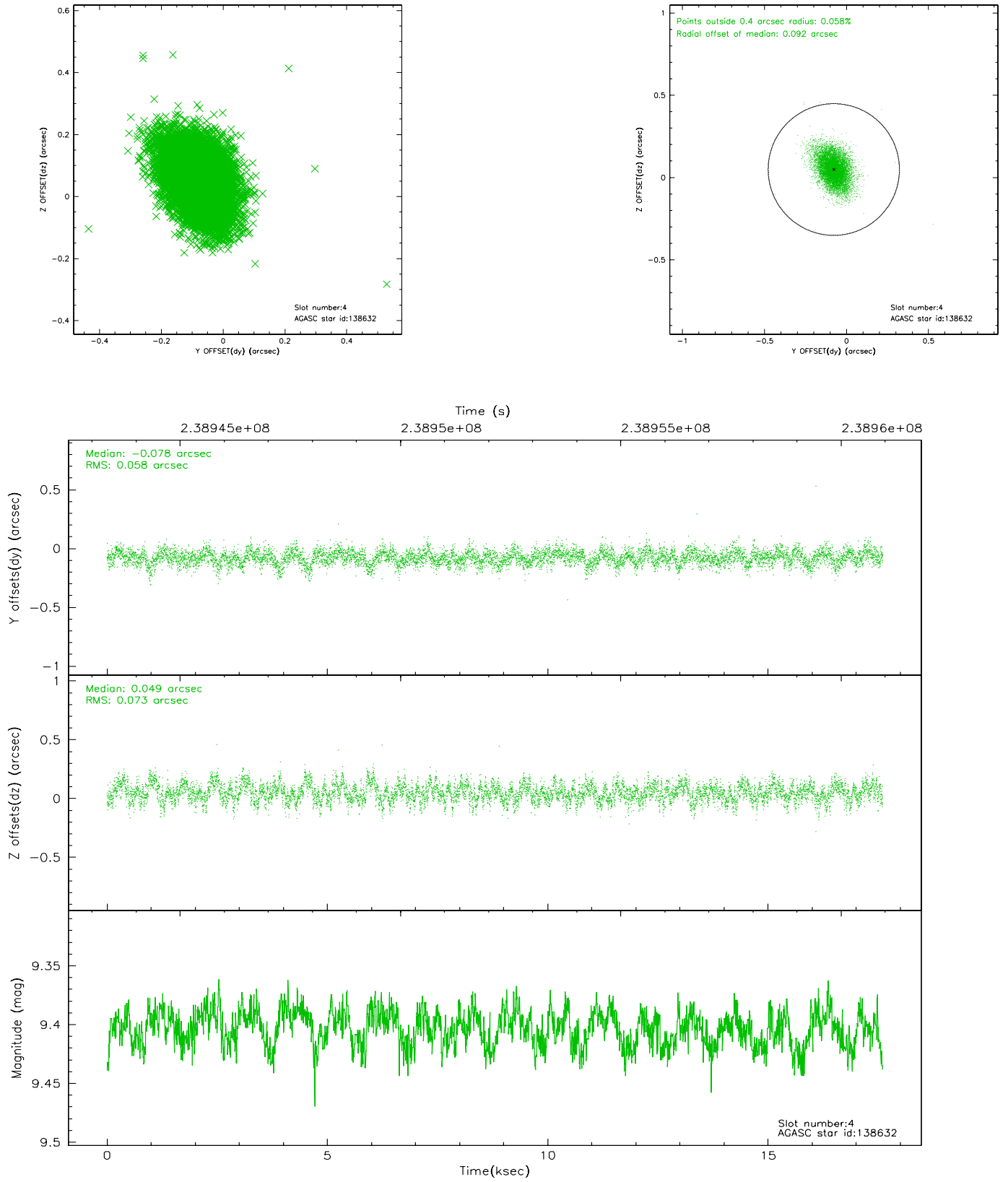
slot	status	id	mag	n_pts	med_dy	med_dz	dr1	dr2	ra	dec	mean_y	mean_z
0	FID	ACIS-S-2	7.10	4293	-0.036	-0.005	0.006	0.011	0.000000	0.000000	-760.15	-1730.96
1	FID	ACIS-S-4	7.21	4293	0.055	0.019	0.005	0.009	0.000000	0.000000	2153.07	177.36
2	FID	ACIS-S-5	7.23	4293	-0.050	-0.005	0.006	0.010	0.000000	0.000000	-1812.75	171.20
3	GUIDE	137616	9.39	8571	-0.073	0.172	0.093	0.154	1.910737	0.179097	406.11	-1824.50
4	GUIDE	138632	9.40	8575	-0.078	0.049	0.097	0.164	1.786186	0.339837	1113.74	-1637.13
5	GUIDE	138904	9.24	8578	0.069	0.176	0.121	0.202	1.959050	0.129938	175.25	-1916.36
6	GUIDE	611189096	6.17	8587	0.113	-0.242	0.054	0.092	1.265931	-0.503035	-952.29	1268.93
7	GUIDE	611192512	9.11	8579	-0.035	-0.153	0.090	0.146	1.062008	-0.007399	977.17	1250.99

2.4 Star Slots

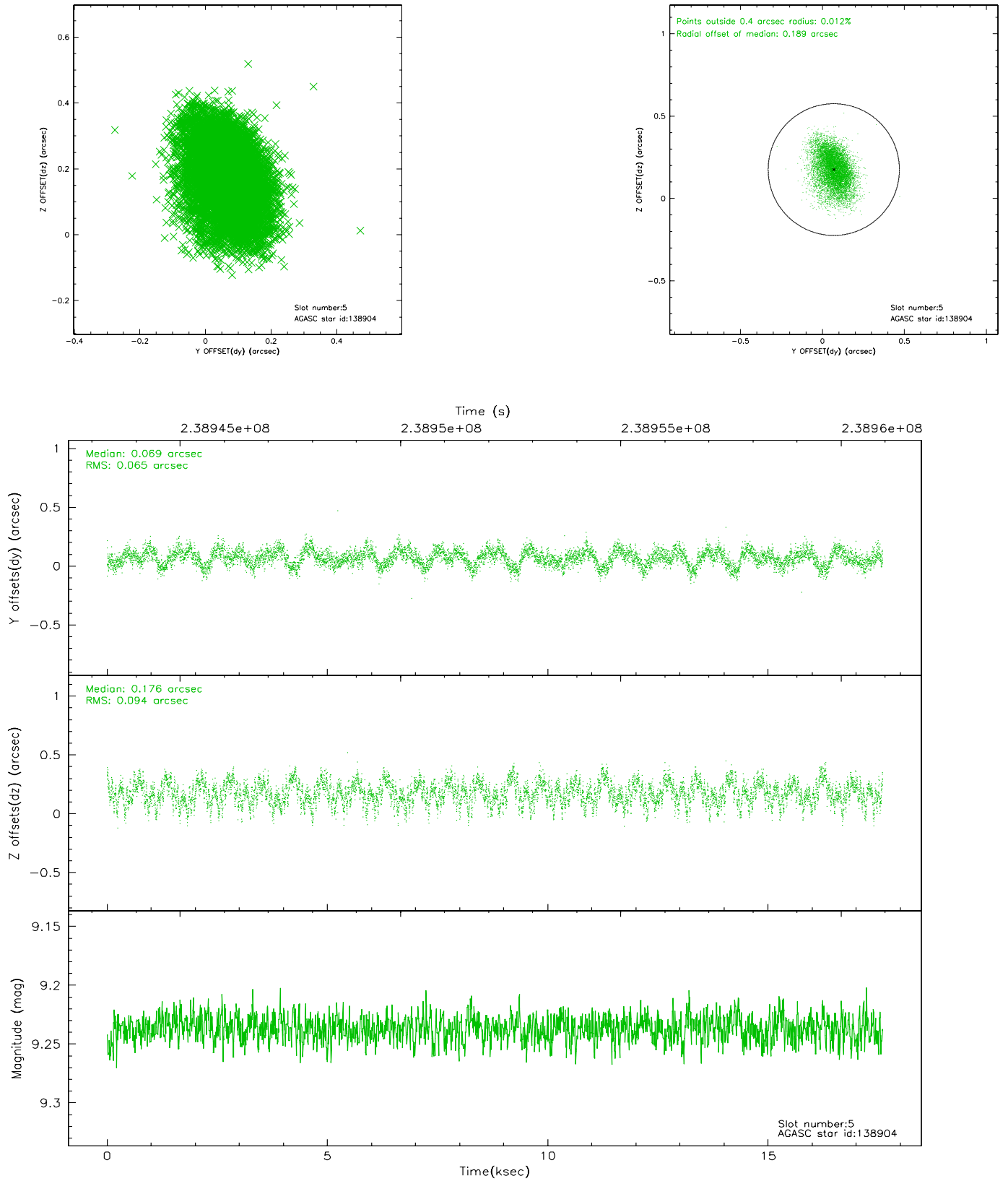
2.4.1 Slot 3



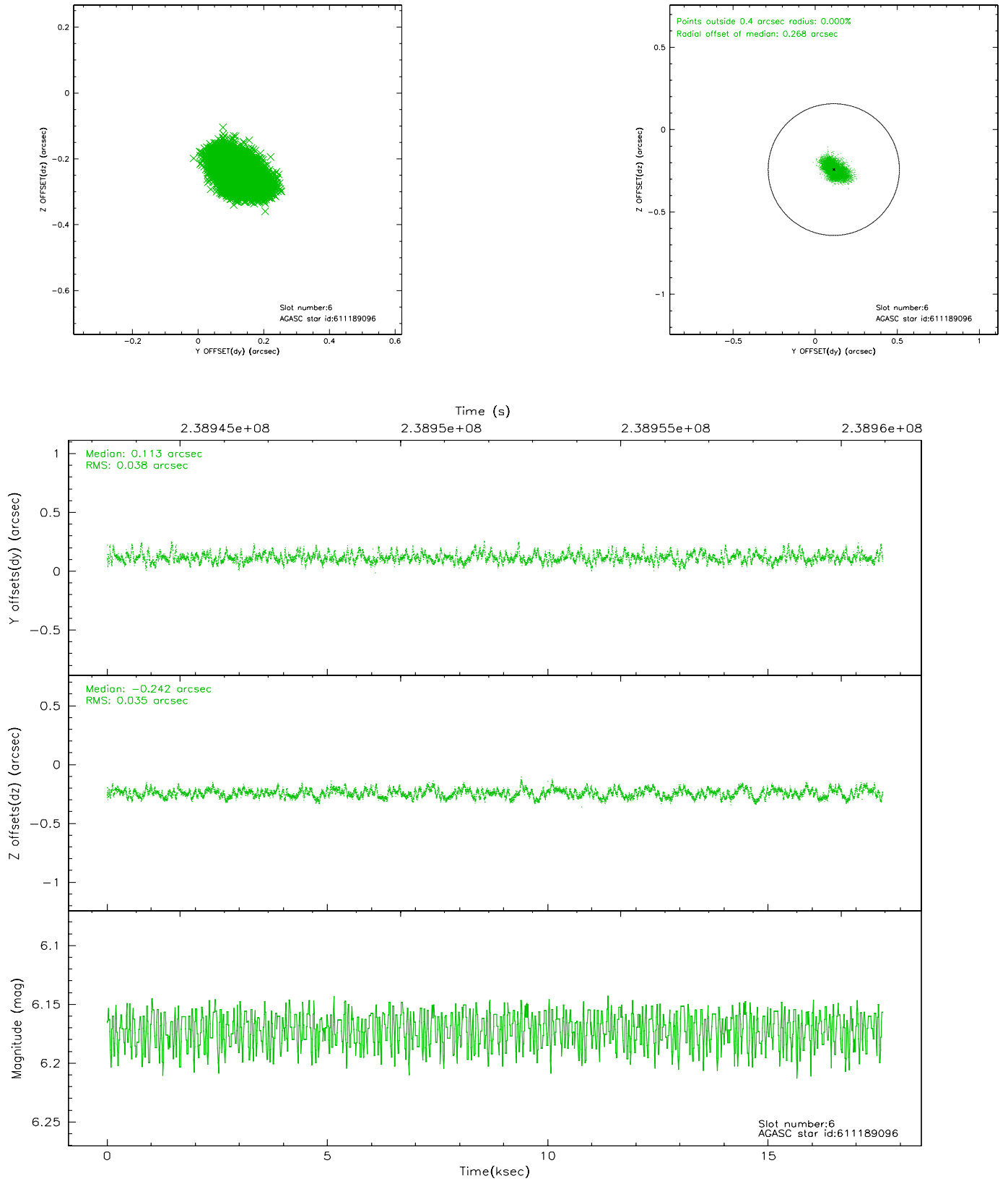
2.4.2 Slot 4



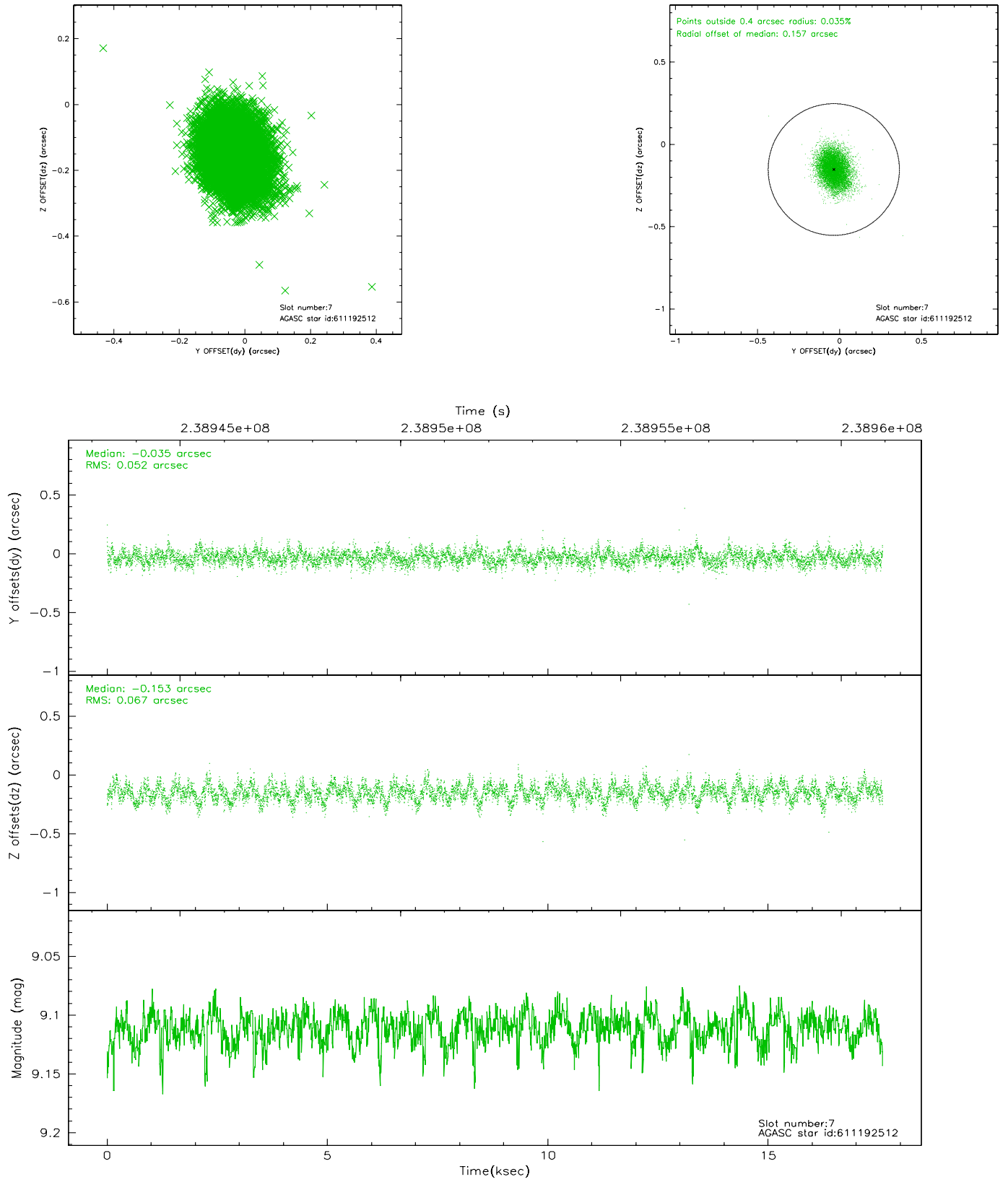
2.4.3 Slot 5



2.4.4 Slot 6

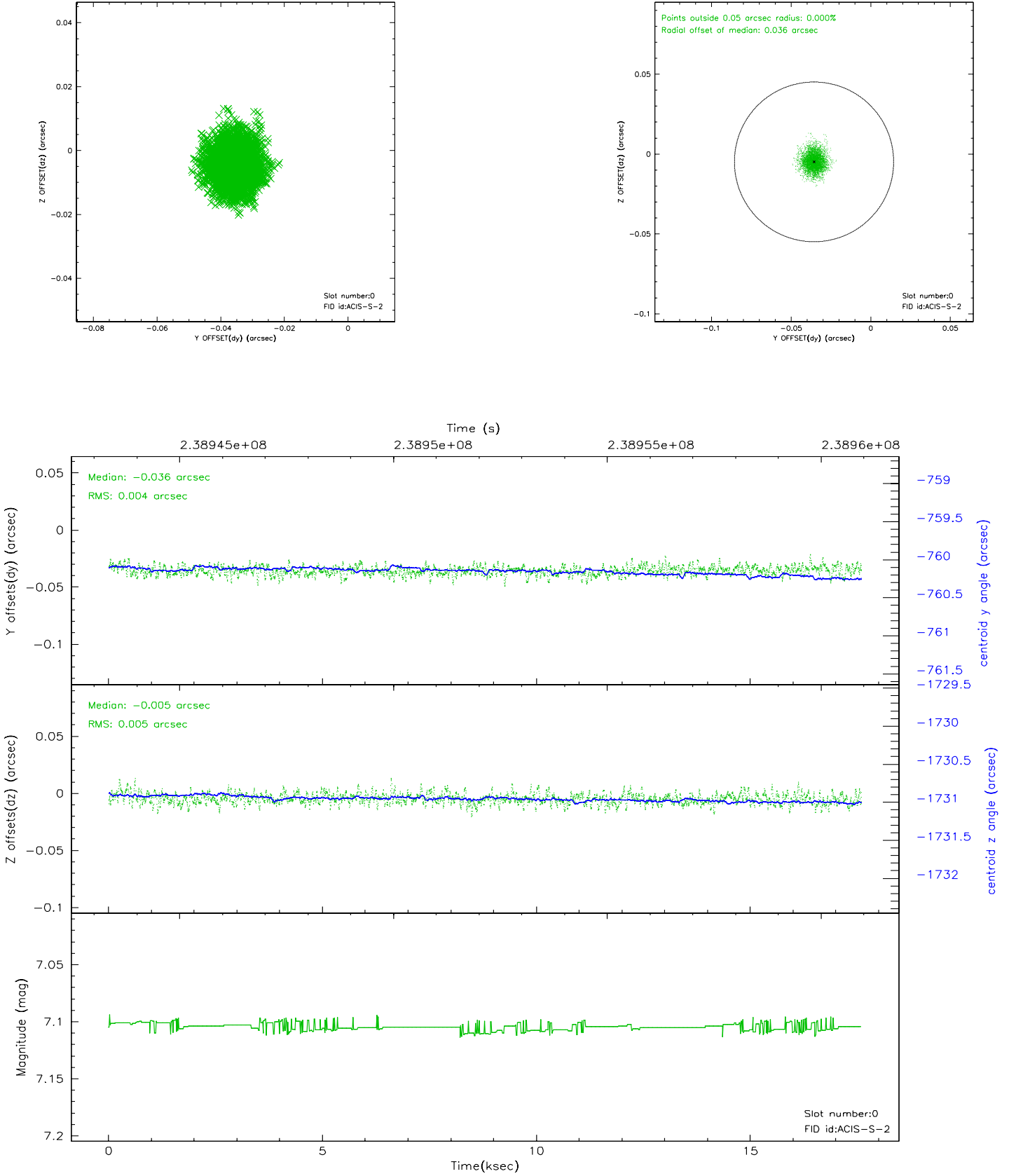


2.4.5 Slot 7

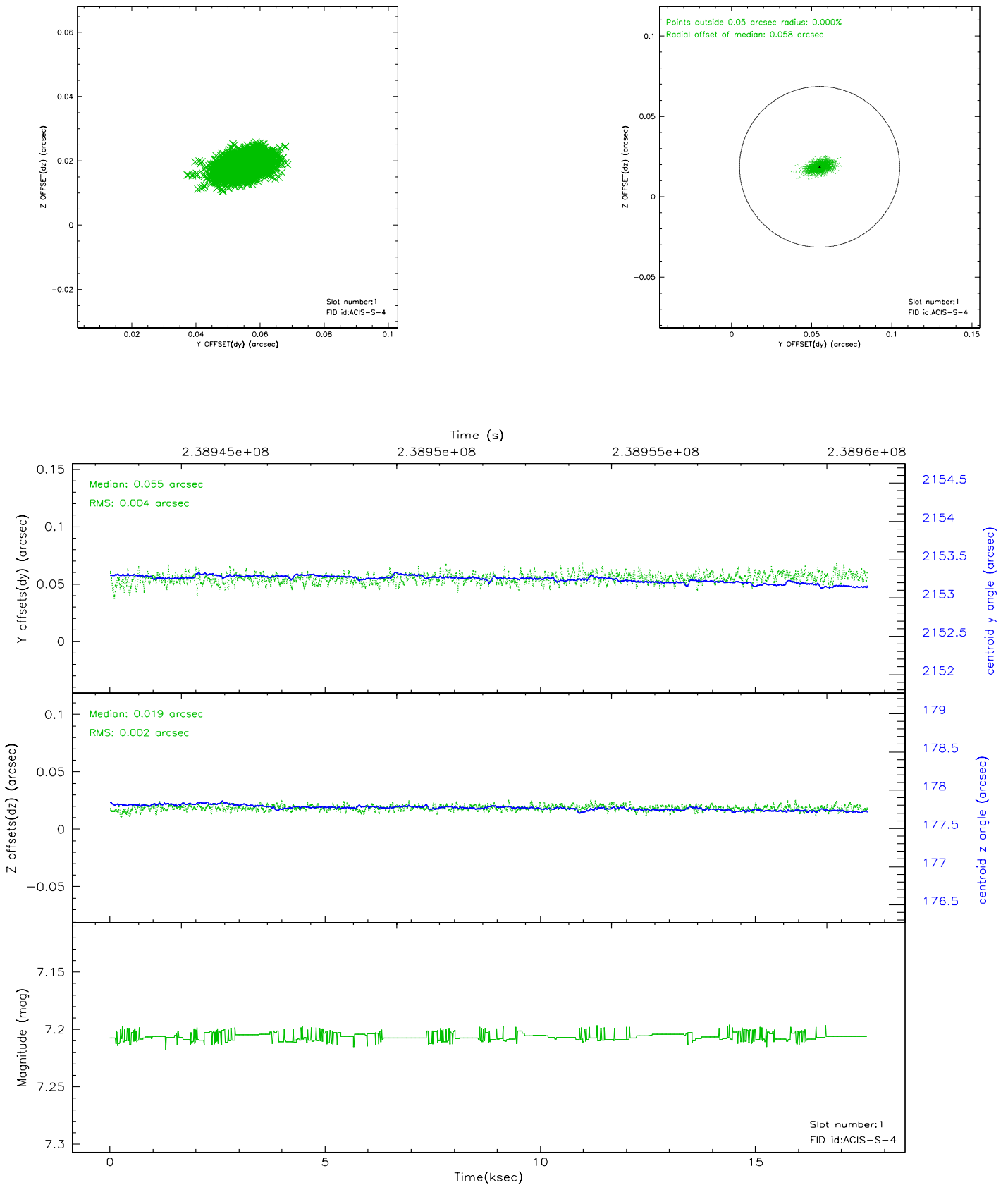


2.5 FID Slots

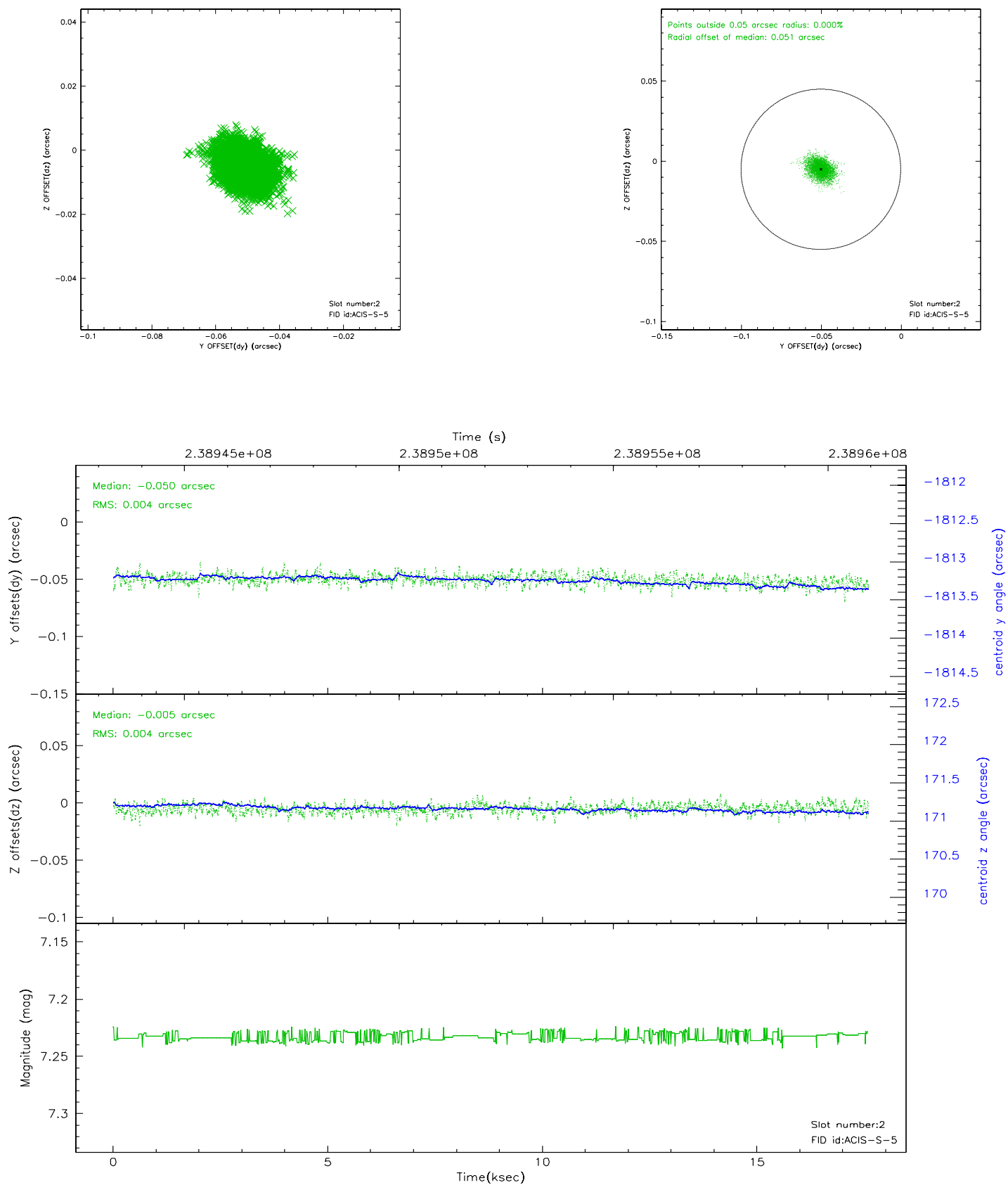
2.5.1 Slot 0



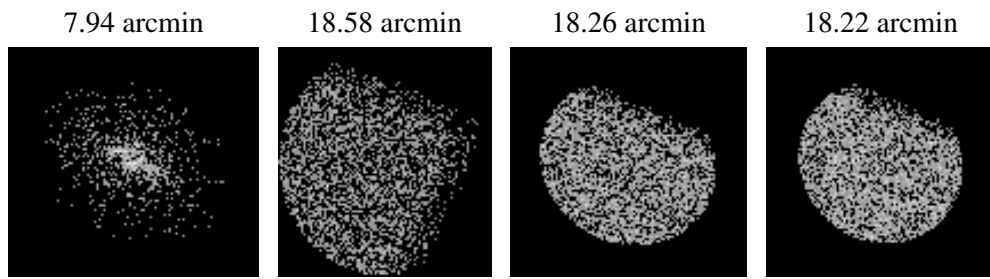
2.5.2 Slot 1



2.5.3 Slot 2



3 Point Sources



A Summary

A.1 Status

V&V Scientist	Jen Lauer
V&V Date (YYYY-MM-DD)	2006.03.16
V&V Edition	1
V&V Disposition and Status	OK
V&V Charge Time	17.15467

A.2 Comments