

V&V Reference Report

L2 ASCDS Version : 8.4.5

Observation 56117 - L2 Version 2
Chandra X-Ray Center

L2 Processing Date : Jun 30 2012

Contents

1	Front	2
2	OBI	3
2.1	OBI	3
2.1.1	Images	3
2.1.2	Bias	3
2.1.3	Parameters	4
2.1.4	Events	4
2.2	Compared Parameters	5
2.3	Star Slots	6
2.4	FID Slots	6
A	Summary	7
A.1	Status	7
A.2	Comments	7

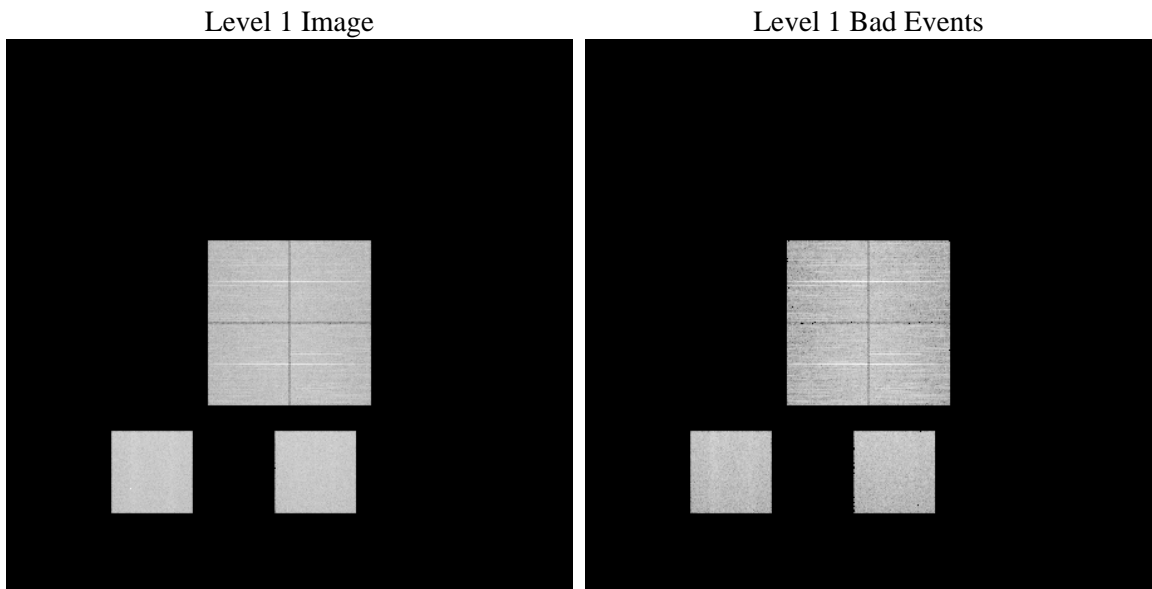
1 Front

seq_num	 	Sequence number
obs_id	56117	Observation id
title	ACIS-012357 diagnostics	Proposal title
observer	CHANDRA engineering request/realtime commanding	Principal investig
object	 	Source name
dtcycle	0	
cycle	P	events from which exps? Prim/Second/Both
ra_targ	0.0	Observer's specified target RA [deg]
dec_targ	0.0	Observer's specified target Dec [deg]
ra_nom	285.04370634858	Nominal RA [deg]
dec_nom	-43.995668681742	Nominal Dec [deg]
roll_nom	333.84696258365	Nominal Roll [deg]
revision	2	Processing version of data
ontime	8278.3999692202	Sum of GTIs [s]
livetime	8173.5738841559	Livetime [s]
ontime0	8278.3999692202	Sum of GTIs [s]
ontime1	8278.3999692202	Sum of GTIs [s]
ontime2	8278.3999692202	Sum of GTIs [s]
ontime3	8278.3999692202	Sum of GTIs [s]
ontime5	8278.3999692202	Sum of GTIs [s]
ontime7	8278.3999692202	Sum of GTIs [s]
l2events	411165	Number of level 2 events

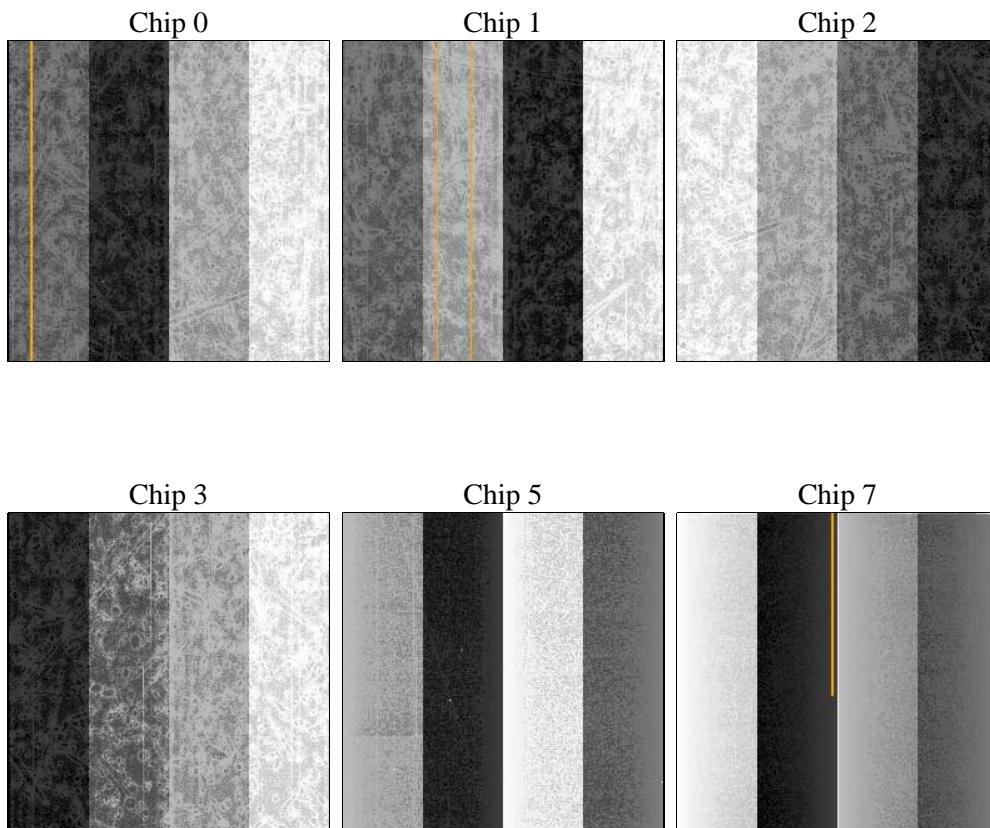
2 OBI

2.1 OBI

2.1.1 Images



2.1.2 Bias



2.1.3 Parameters

obi_num	0	Obi number	sched_exp_time	0.0	[s] Scheduled observation exposure time
ascdsver	8.4.5	Processing system revision	ontime	8278.3999692202	Sum of GTIs [s]
caldsver	4.5.0	 	ontime0	8278.3999692202	Sum of GTIs [s]
date	2012-06-30T05:33:18	Date and time of file creation	ontime1	8278.3999692202	Sum of GTIs [s]
revision	2	Processing version of data	ontime2	8278.3999692202	Sum of GTIs [s]
			ontime3	8278.3999692202	Sum of GTIs [s]
			ontime5	8278.3999692202	Sum of GTIs [s]
			ontime7	8278.3999692202	Sum of GTIs [s]
			l1events	835121	Number of level 1 events

2.1.4 Events

	ccd 0	ccd 1	ccd 2	ccd 3	ccd 5	ccd 7		ccd 0	ccd 1	ccd 2	ccd 3	ccd 5	ccd 7
level 1 events	125261	123142	127367	133513	164070	161768	grade 0 events	31679	30801	32603	32761	10000	16136
rejected events	65153	62495	67566	73002	68976	66896		25%	25%	25%	24%	6%	9%
rejected %	52%	50%	53%	54%	42%	41%	grade 1 events	195	179	251	234	191	127
								0%	0%	0%	0%	0%	0%
							grade 2 events	11049	12360	10203	10559	35593	20536
								8%	10%	8%	7%	21%	12%
							grade 3 events	3983	3928	3997	4216	3448	8191
								3%	3%	3%	3%	2%	5%
							grade 4 events	3998	3986	4092	4172	3376	8283
								3%	3%	3%	3%	2%	5%
							grade 5 events	3758	3779	3436	4194	8016	10202
								3%	3%	2%	3%	4%	6%
							grade 6 events	9424	9595	8935	8827	42720	41758
								7%	7%	7%	6%	26%	25%
							grade 7 events	61175	58514	63850	68550	60726	56535
								48%	47%	50%	51%	37%	34%

2.2 Compared Parameters

Parameter	Planned	Actual	Parameter	Planned	Actual
Instrument	ACIS	ACIS	Obspar format version number	7	7
Detector	ACIS-012357	ACIS-012357	Obspar file type	PREDICTED	ACTUAL
Grating	NONE	NONE	Obspar update status	NONE	UPDATED
Data mode	FAINT	FAINT	Number of optional ACIS chips dropped	0	0
Observation mode	SECONDARY	SECONDARY	On-chip summing requested	N	N
[deg] Pointing RA	0	285.0437063485842	Subarray requested	NONE	NONE
[deg] Pointing Dec	0	-43.99566868174212	Alternating exposures requested	N	N
[deg] Pointing Roll	0.0	333.8469625836487	[s] Primary exposure time	3.2	3.2
[mm] SIM focus pos	-1.429586	-1.428180813131781			
[mm] SIM defocus	0.1037507710433287	0.1051558262725154			
[mm] SIM translation stage pos	250.455976	250.466033080201			
[mm] SIM translation stage offset	0	-0.01005468664627074			
[s] Observation start time (MET)	395736529.815461	395736528.79045			
Observation start date	2010-07-17T06:48:50	2010-07-17T06:48:48			
[s] Observation end time (MET)	395748567.416076	395748566.39107			
Observation end date	2010-07-17T10:09:27	2010-07-17T10:09:26			
Read mode	TIMED	TIMED			

2.3 Star Slots

2.4 FID Slots

A Summary

A.1 Status

V&V Scientist	Jen Lauer
V&V Date (YYYY-MM-DD)	2012.07.09
V&V Edition	1
V&V Disposition and Status	OK
V&V Charge Time	8.2783999692202

A.2 Comments