

V&V Reference Report

L2 ASCDS Version : 7.6.7.1

Observation 5587 - L2 Version 002
Chandra X-Ray Center

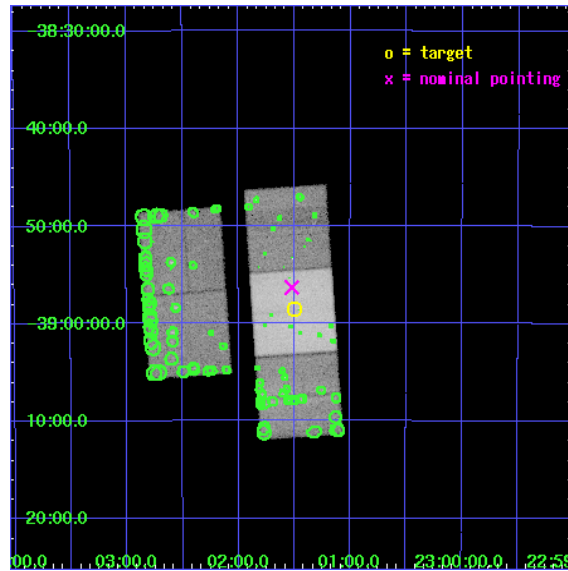
L2 Processing Date : Mar 14 2006

Contents

1	Front	2
2	OBI	3
2.1	OBI	3
2.1.1	Images	3
2.1.2	Bias	3
2.1.3	Parameters	4
2.1.4	Events	4
2.2	Compared Parameters	5
2.3	Aspect	6
2.4	Star Slots	9
2.4.1	Slot 3	9
2.4.2	Slot 4	10
2.4.3	Slot 5	11
2.4.4	Slot 6	12
2.4.5	Slot 7	13
2.5	FID Slots	14
2.5.1	Slot 0	14
2.5.2	Slot 1	15
2.5.3	Slot 2	16
3	Point Sources	17
A	Summary	18
A.1	Status	18
A.2	Comments	18

1 Front

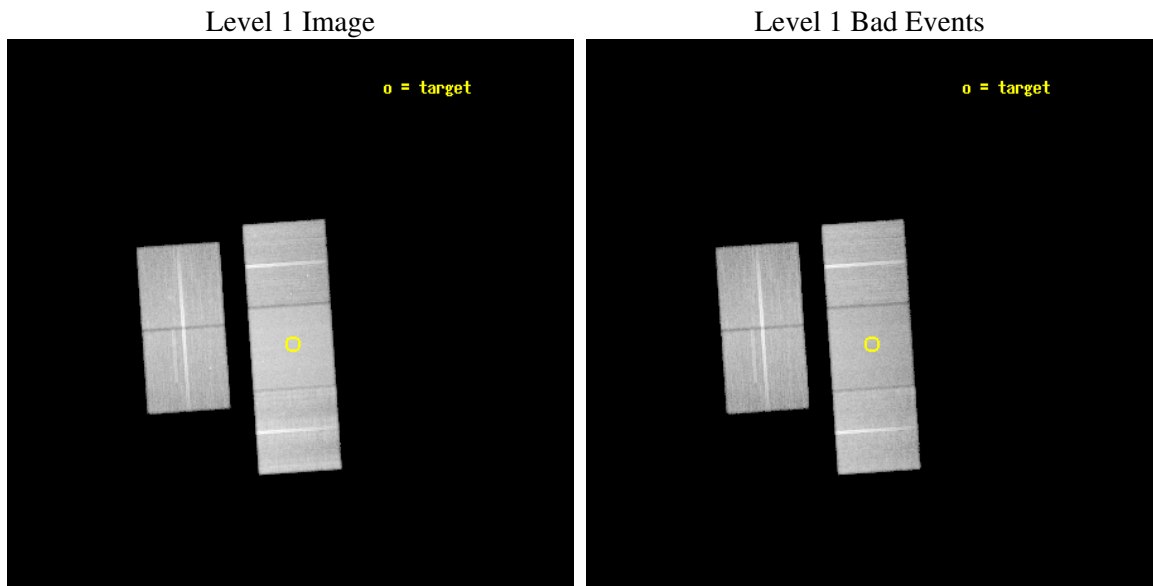
seq_num	500576
obs_id	5587
title	Short-Hard Gamma-Ray Burst Afterglows with Chandra
observer	Dr D Frail
object	GRB050709
dtcycle	0
cycle	P
ra_targ	345.375
dec_targ	-38.975833
ra_nom	345.38054388952
dec_nom	-38.93869549359
roll_nom	86.089957220027
revision	2
ontime	44159.499915093
livetime	43582.523538952
ontime2	44153.217934668
ontime3	44153.218044162
ontime6	44156.358924866
ontime7	44159.499915093
ontime8	44159.499915093
l2events	346043



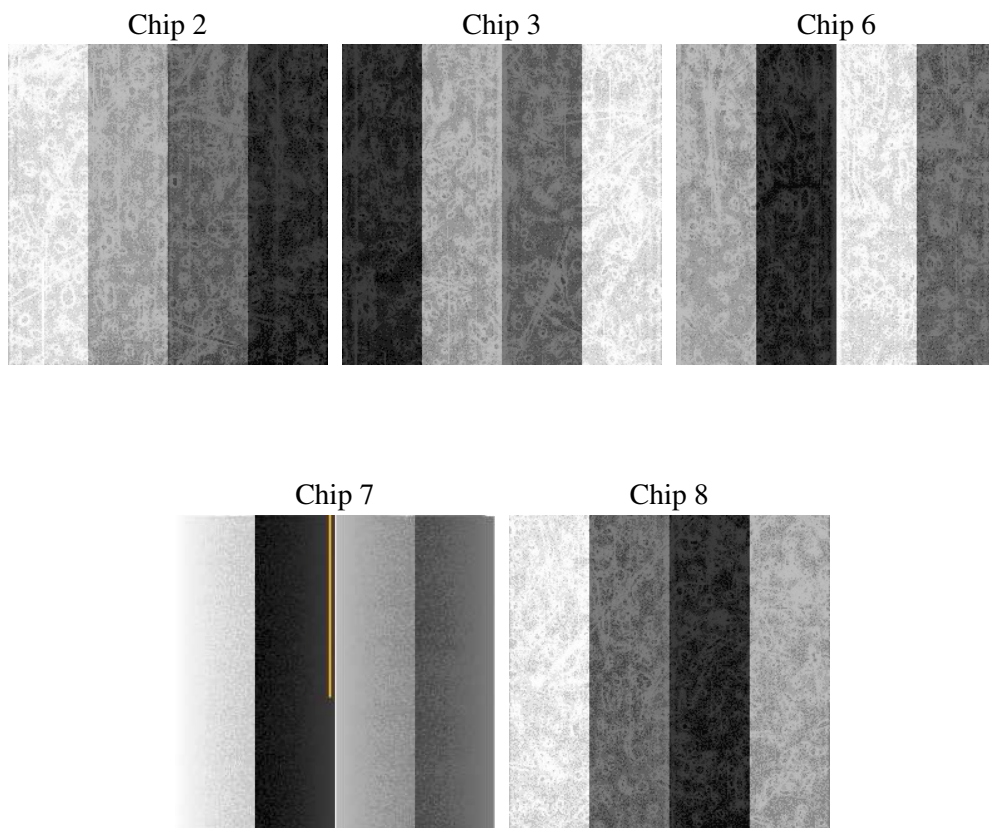
2 OBI

2.1 OBI

2.1.1 Images



2.1.2 Bias



2.1.3 Parameters

obi_num	0
ascdsver	7.6.7.1
caldbver	3.2.1
date	2006-03-14T15:45:04
revision	2

sched_exp_time	44000.000000
ontime	44162.603490889
ontime2	44156.321510464
ontime3	44156.32160005
ontime6	44159.462480754
ontime7	44162.603490889
ontime8	44162.603470981
l1events	1911233

2.1.4 Events

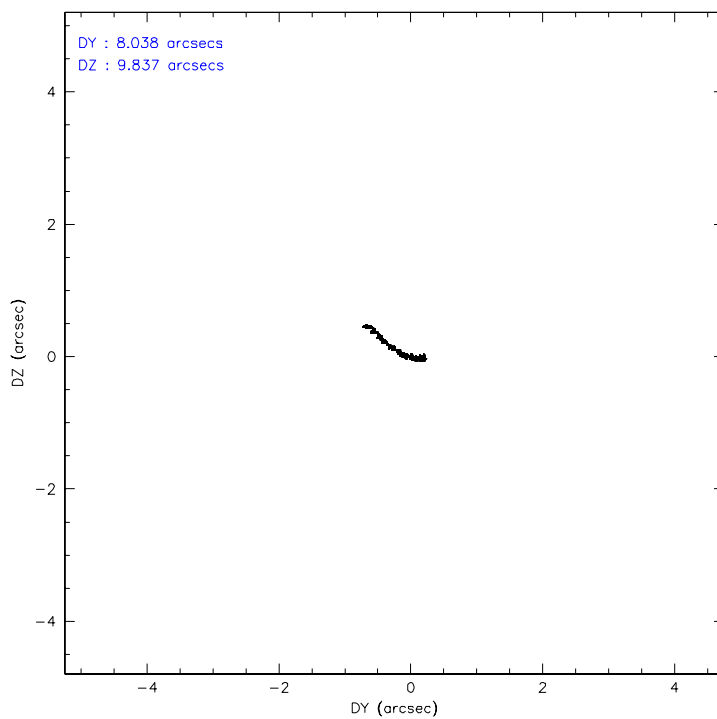
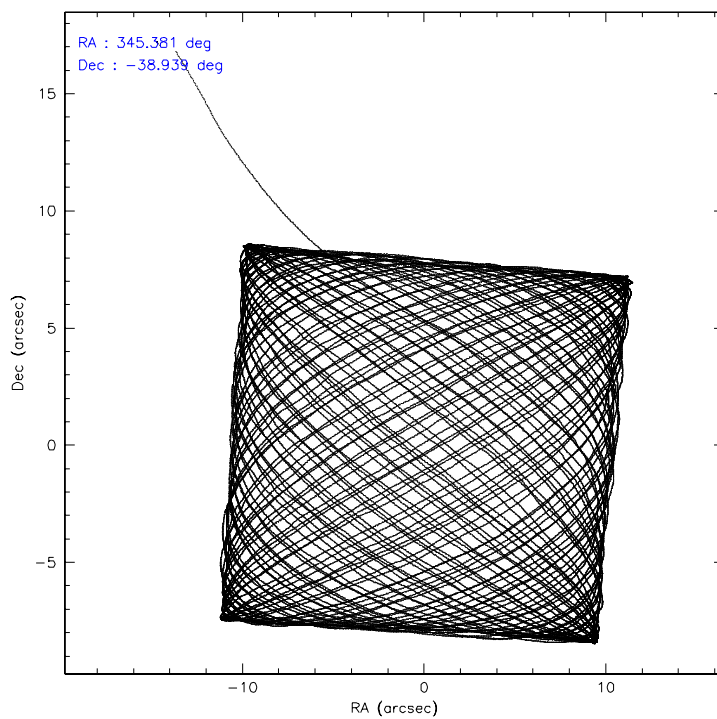
	ccd 2	ccd 3	ccd 6	ccd 7	ccd 8
level 1 events	325725	332751	344624	458827	449306
rejected events	280895	287163	297487	280998	331025
rejected %	86%	86%	86%	61%	73%

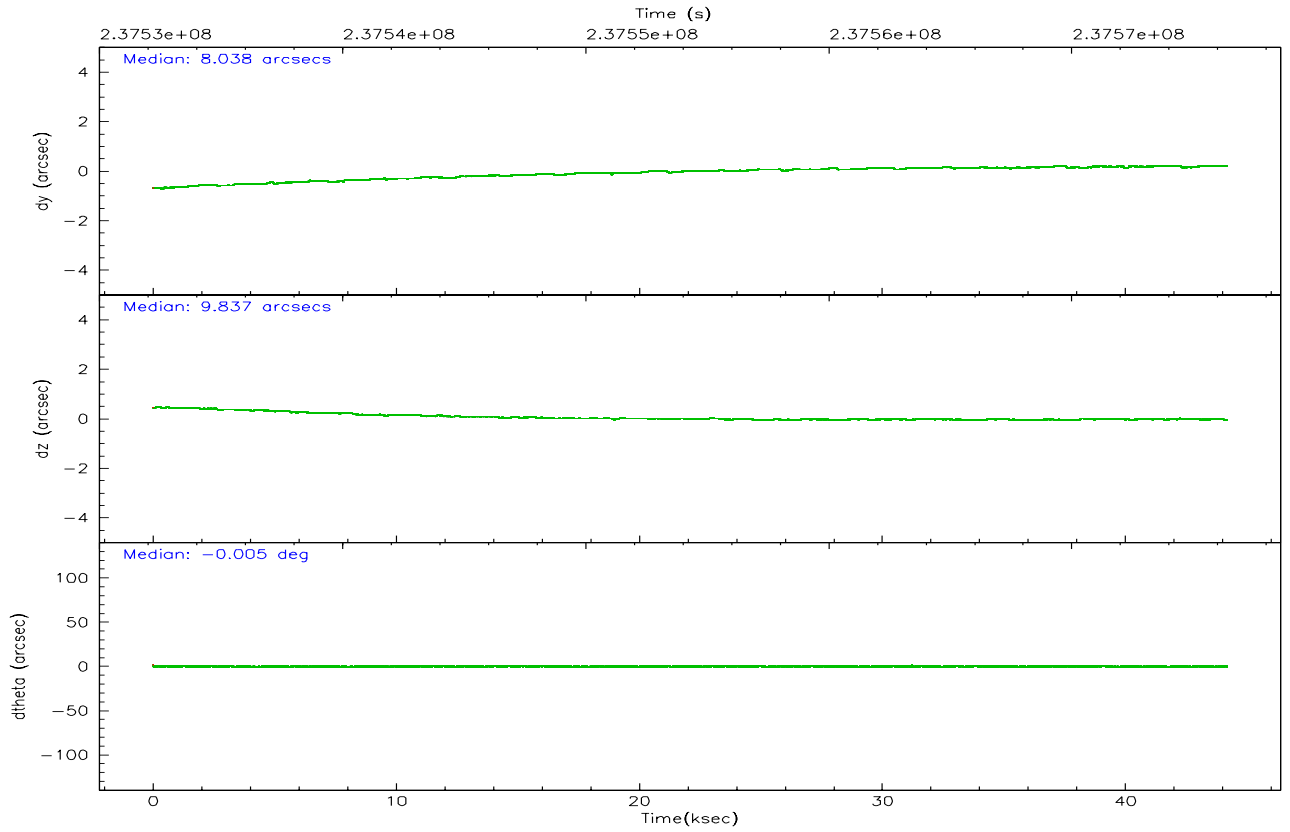
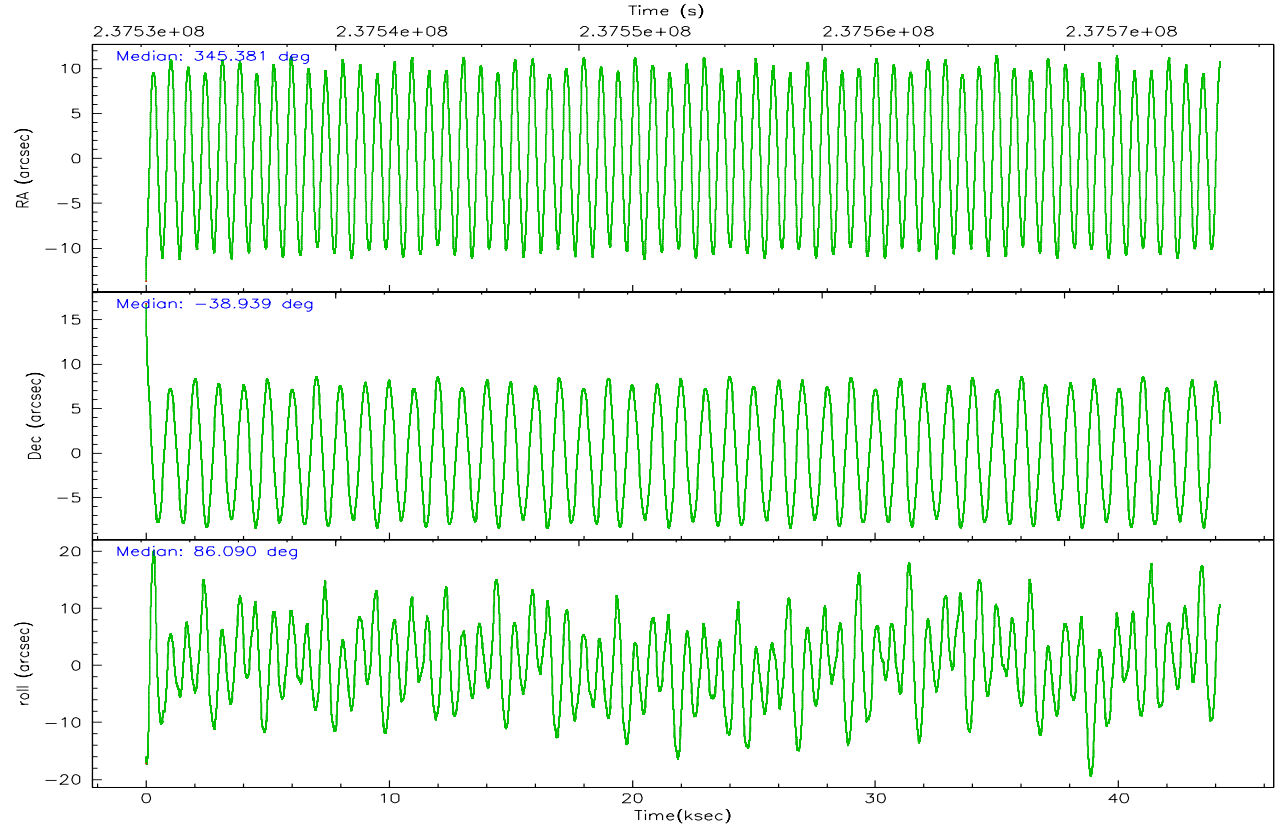
	ccd 2	ccd 3	ccd 6	ccd 7	ccd 8
grade 0 events	20255	20156	19537	10145	40804
	6%	6%	5%	2%	9%
grade 1 events	188	224	175	271	339
	0%	0%	0%	0%	0%
grade 2 events	9575	9780	10840	43592	23460
	2%	2%	3%	9%	5%
grade 3 events	3764	3781	3908	8718	14399
	1%	1%	1%	1%	3%
grade 4 events	3857	3948	3904	8458	13189
	1%	1%	1%	1%	2%
grade 5 events	12780	14808	15242	29389	20498
	3%	4%	4%	6%	4%
grade 6 events	7382	7927	8949	106928	26436
	2%	2%	2%	23%	5%
grade 7 events	267924	272127	282069	251326	310181
	82%	81%	81%	54%	69%

2.2 Compared Parameters

Parameter	Planned	Actual	Parameter	Planned	Actual
Instrument	ACIS	ACIS	Obspar format version number	6	6
Detector	ACIS-23678	ACIS-23678	Obspar file type	PREDICTED	ACTUAL
Grating	NONE	NONE	Obspar update status	NONE	UPDATED
Data mode	VFAINT	VFAINT	On-chip summing requested	N	N
Observation mode	POINTING	POINTING	Subarray requested	NONE	NONE
Pointing RA	345.396381	345.3805438895246	Alternating exposures requested	N	N
Pointing Dec	-38.962983	-38.93869549358985	Primary exposure time	0.000000	3.1
Pointing Roll	85.943283	86.08995722002653			
SIM focus pos (mm)	-0.684267	-0.6828225247311905			
SIM defocus (mm)	0	0.001444936568705701			
SIM translation stage pos (mm)	-190.132523	-190.1400660498719			
SIM translation stage offset (mm)	0	0.00754346686406393			
Observation start time	237532387.184000	237531398.82875			
Observation start date	2005-07-12T05:12:03	2005-07-12T04:56:38			
Observation end time	237576387.184000	237576790.44332			
Observation end date	2005-07-12T17:25:23	2005-07-12T17:33:10			
Read mode	TIMED	TIMED			

2.3 Aspect



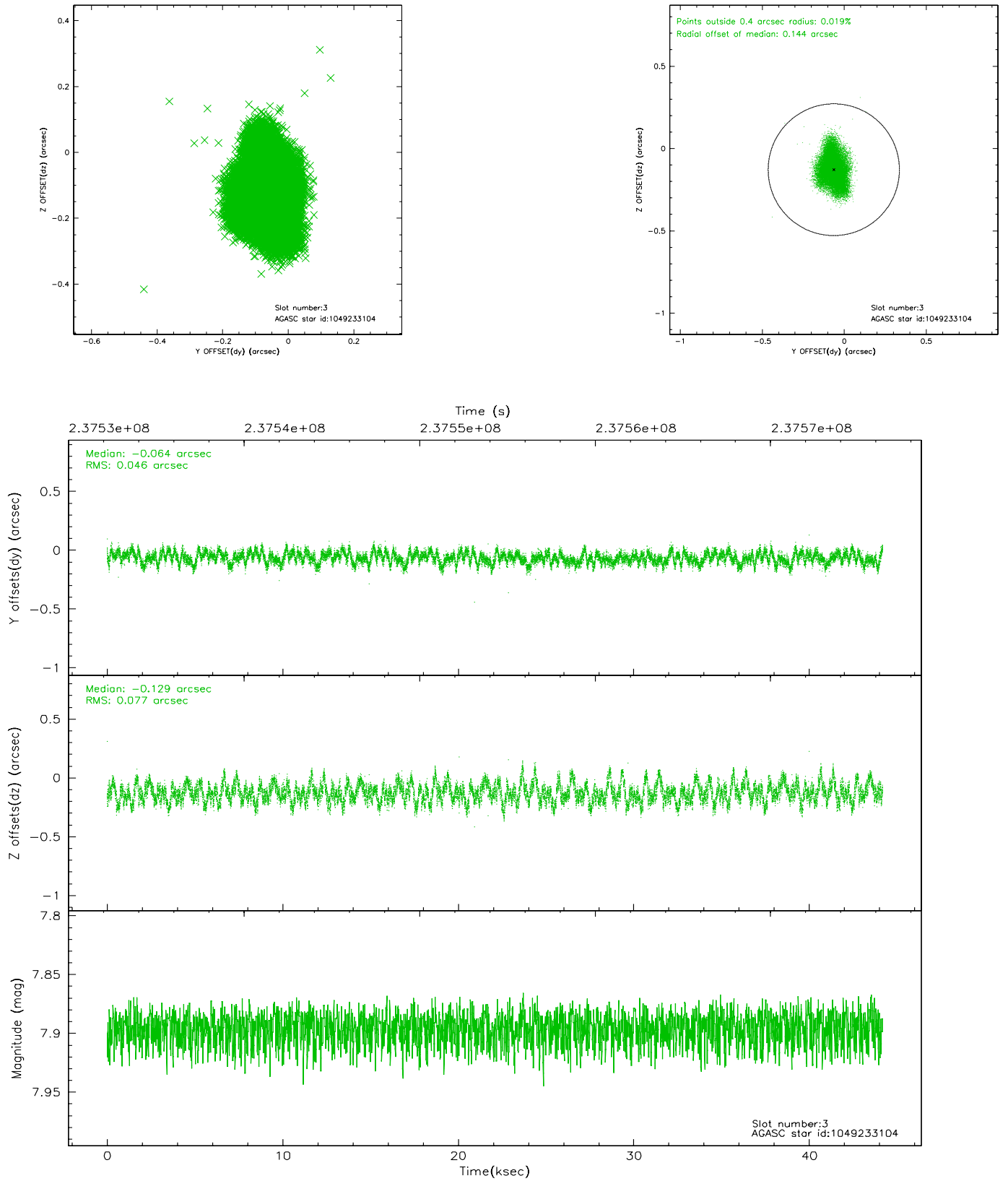


Slot Statistics

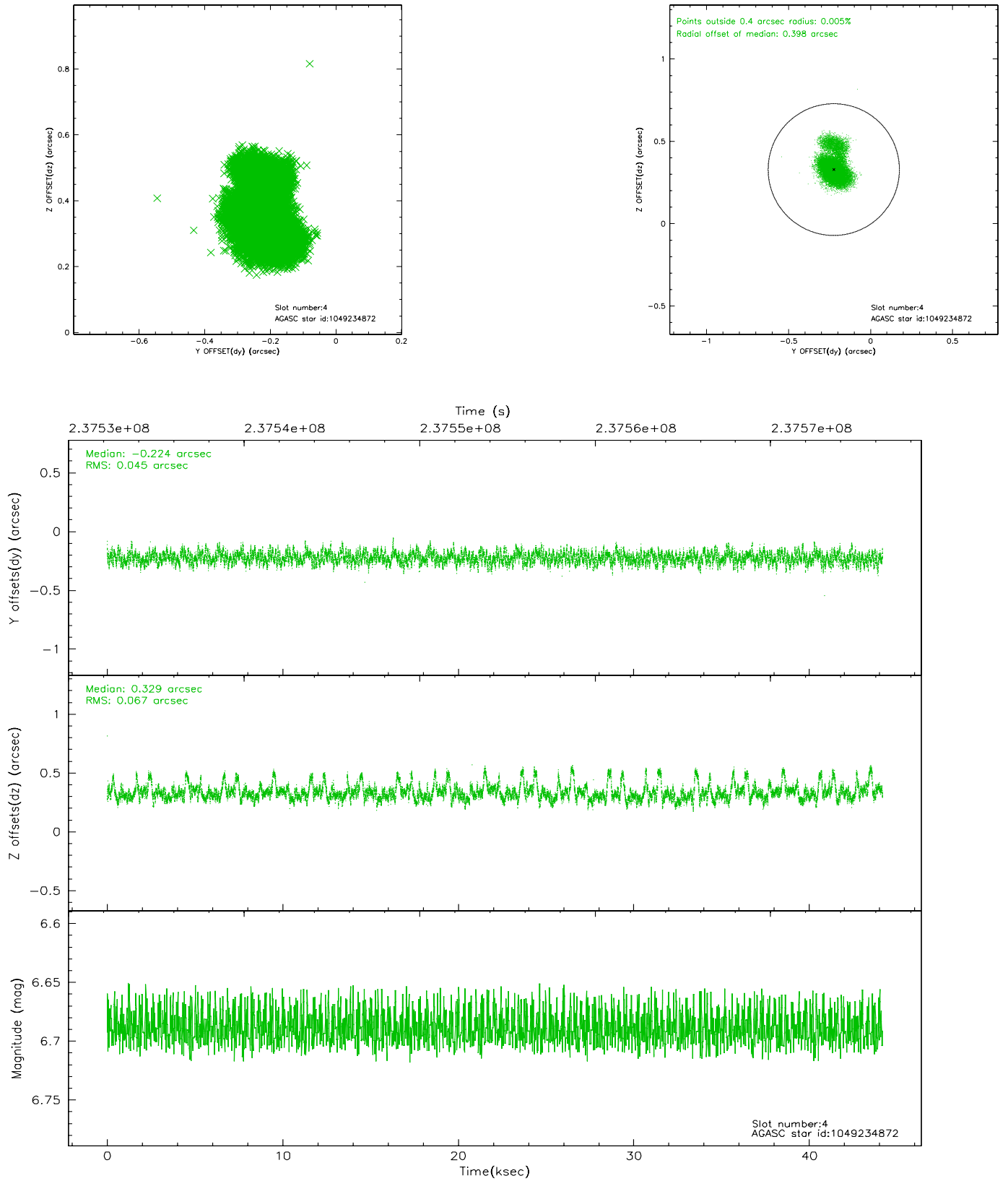
slot	status	id	mag	n_pts	med_dy	med_dz	dr1	dr2	ra	dec	mean_y	mean_z
0	FID	ACIS-S-2	7.10	10776	-0.030	-0.006	0.008	0.016	0.000000	0.000000	-760.72	-1731.18
1	FID	ACIS-S-4	7.20	10775	0.076	0.016	0.014	0.026	0.000000	0.000000	2152.62	177.40
2	FID	ACIS-S-5	7.23	10776	-0.078	-0.002	0.015	0.032	0.000000	0.000000	-1813.65	170.95
3	GUIDE	1049233104	7.90	21550	-0.064	-0.129	0.095	0.157	345.317260	-38.843726	412.61	251.85
4	GUIDE	1049234872	6.69	21551	-0.224	0.329	0.077	0.162	345.874120	-38.433441	1993.41	-1208.61
5	GUIDE	1049235968	9.64	21535	0.084	0.117	0.101	0.163	345.601758	-39.176537	-726.57	-625.77
6	GUIDE	1049240648	9.62	21540	0.130	-0.018	0.119	0.199	345.398802	-39.445998	-1733.70	-129.46
7	GUIDE	1049238560	10.86	21497	0.074	-0.300	0.293	0.485	344.775462	-38.689212	853.99	1809.70

2.4 Star Slots

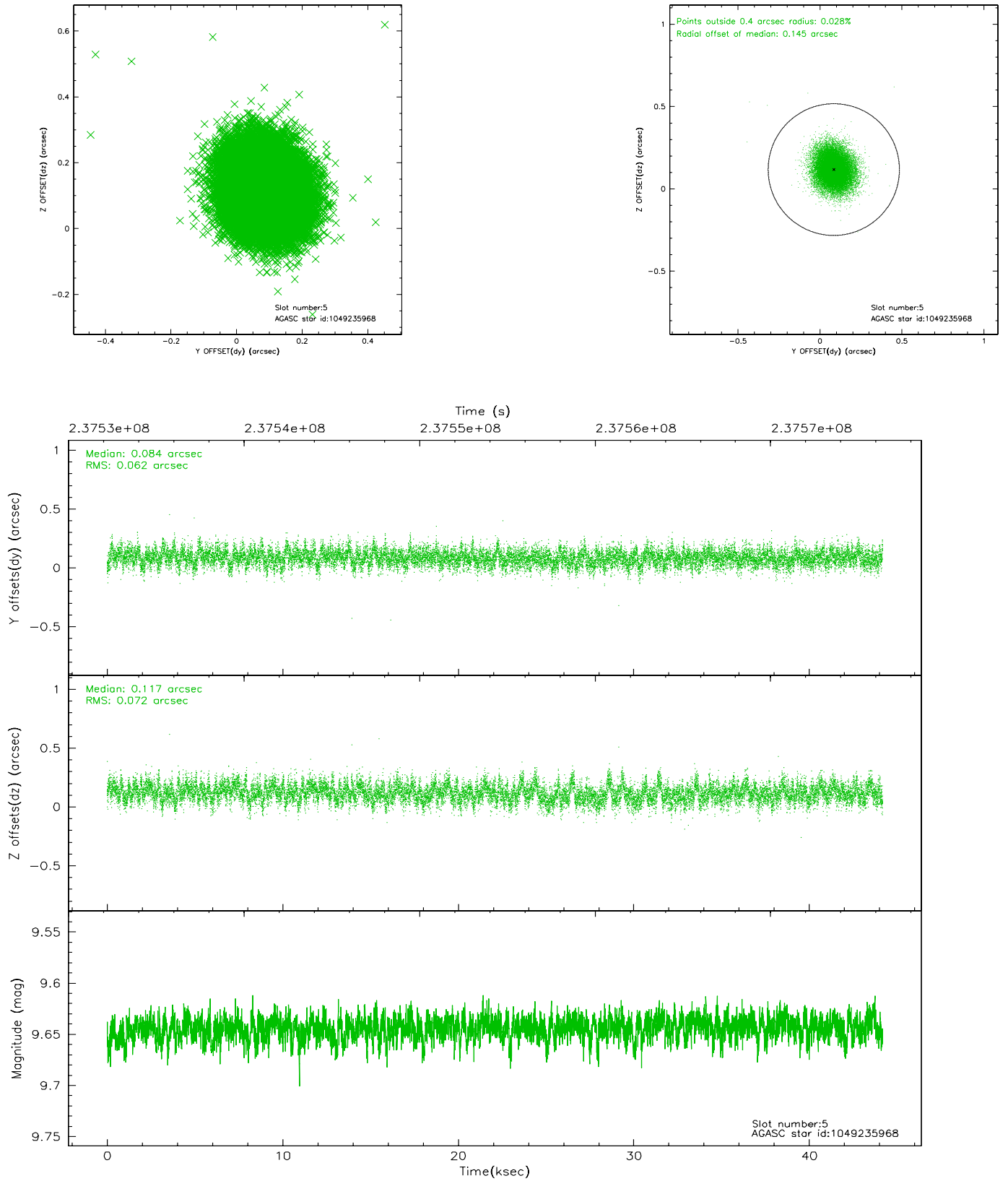
2.4.1 Slot 3



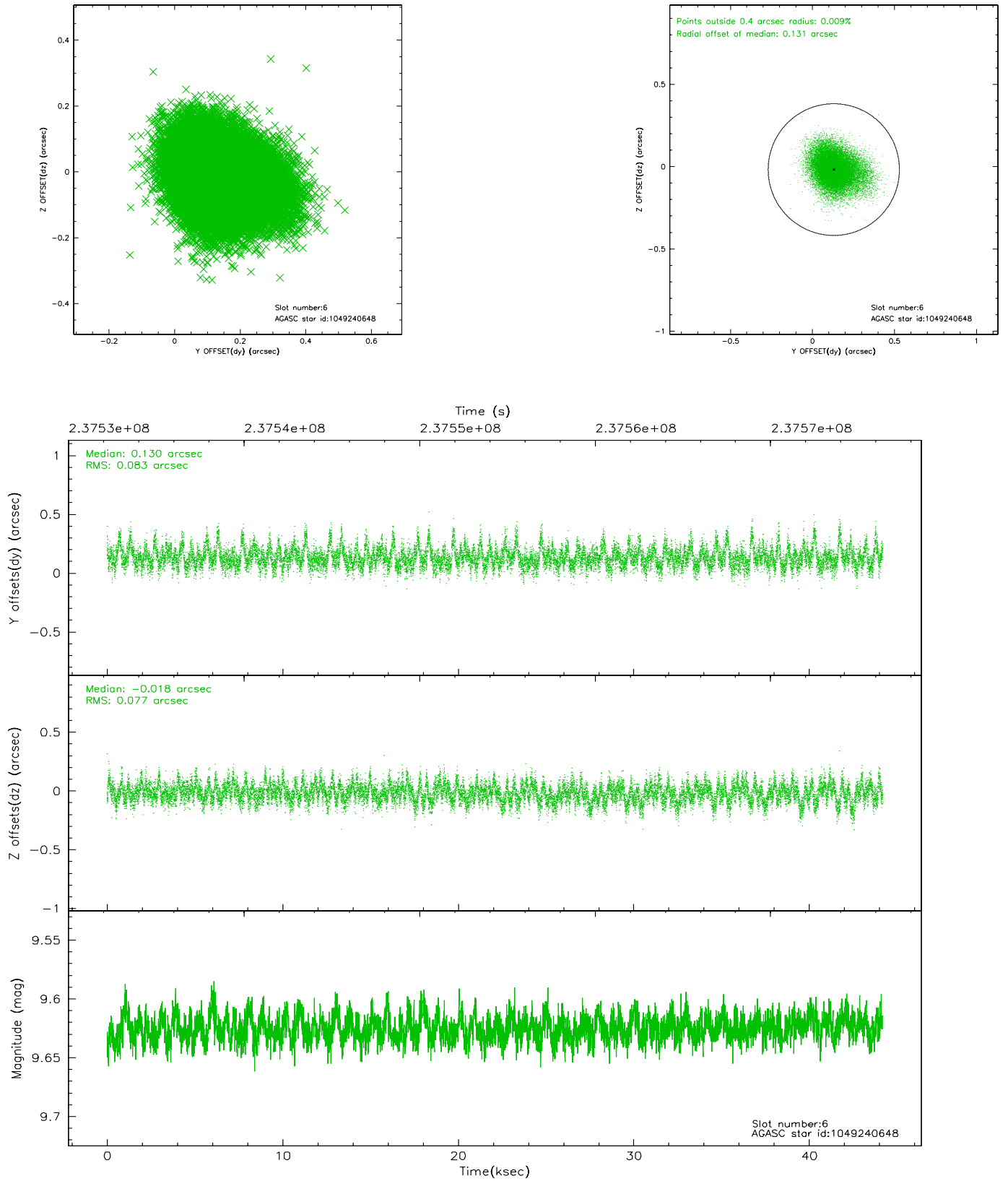
2.4.2 Slot 4



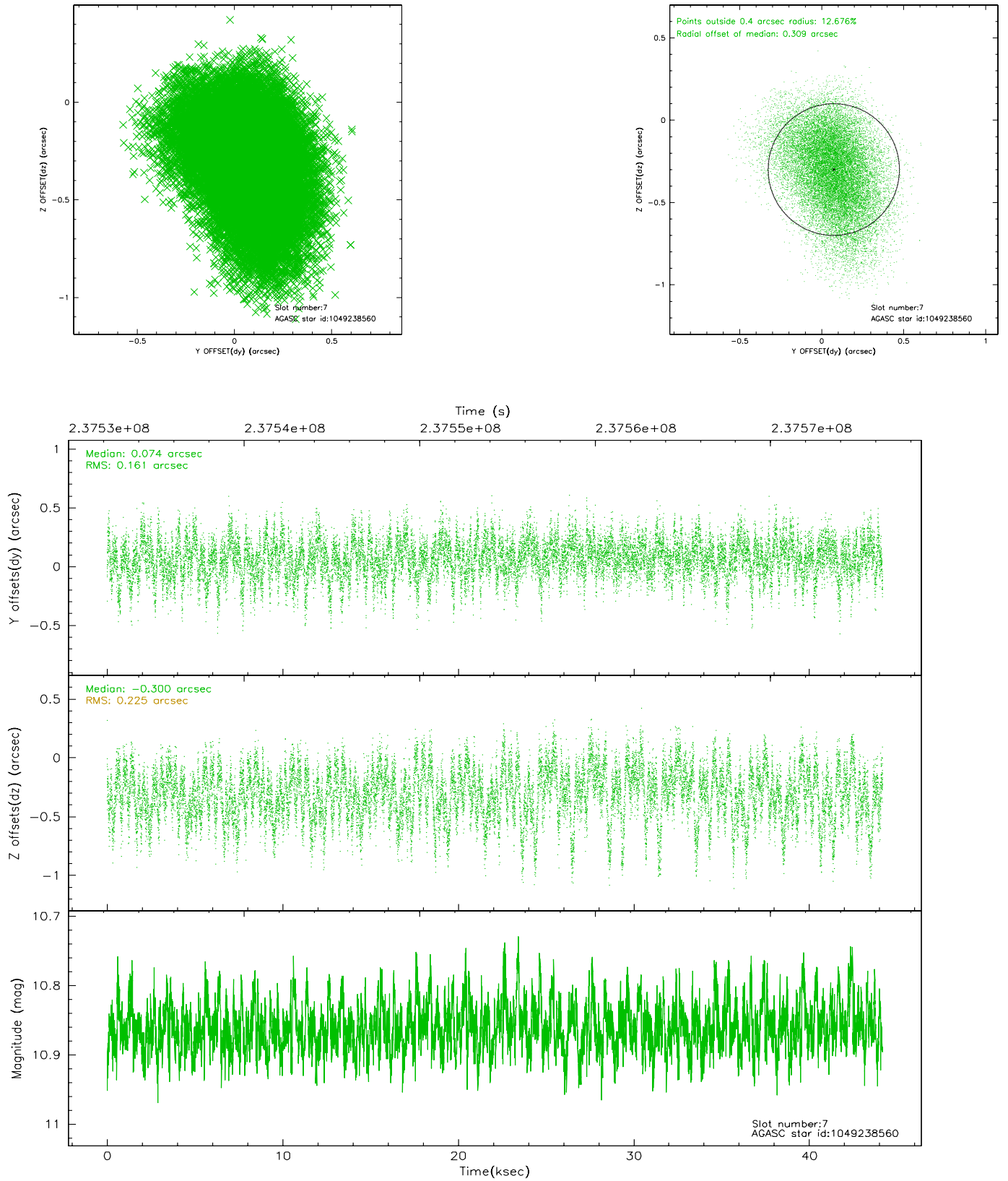
2.4.3 Slot 5



2.4.4 Slot 6

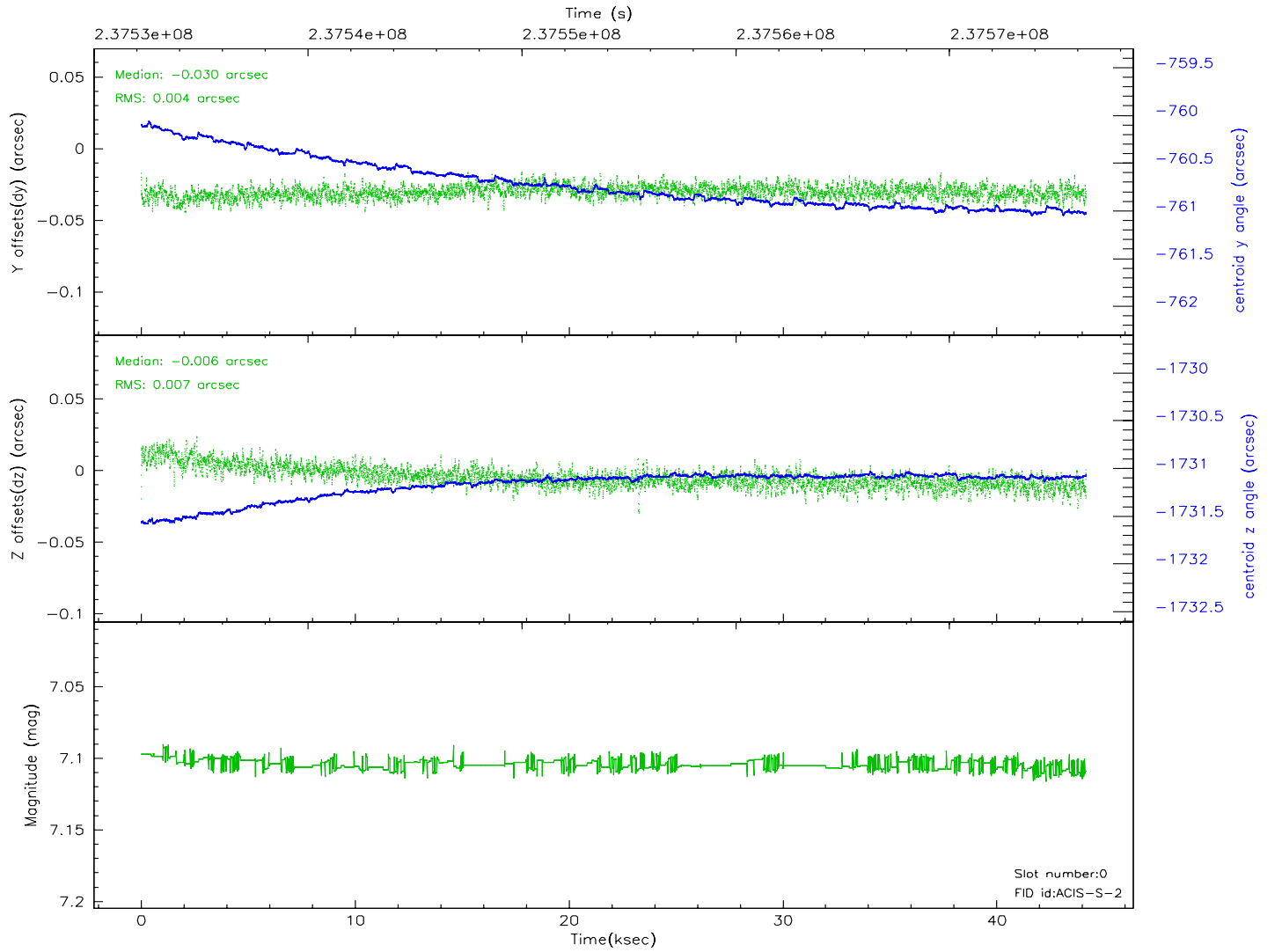
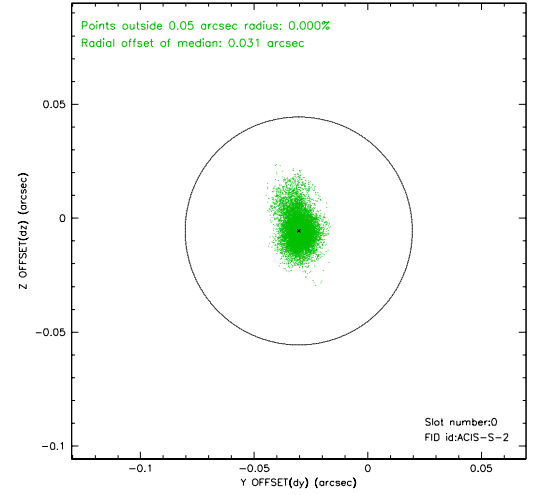
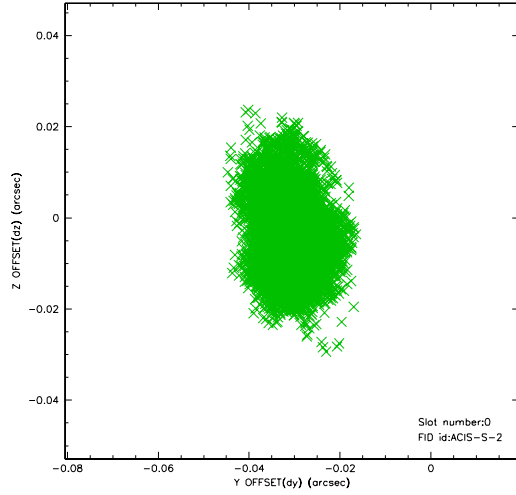


2.4.5 Slot 7

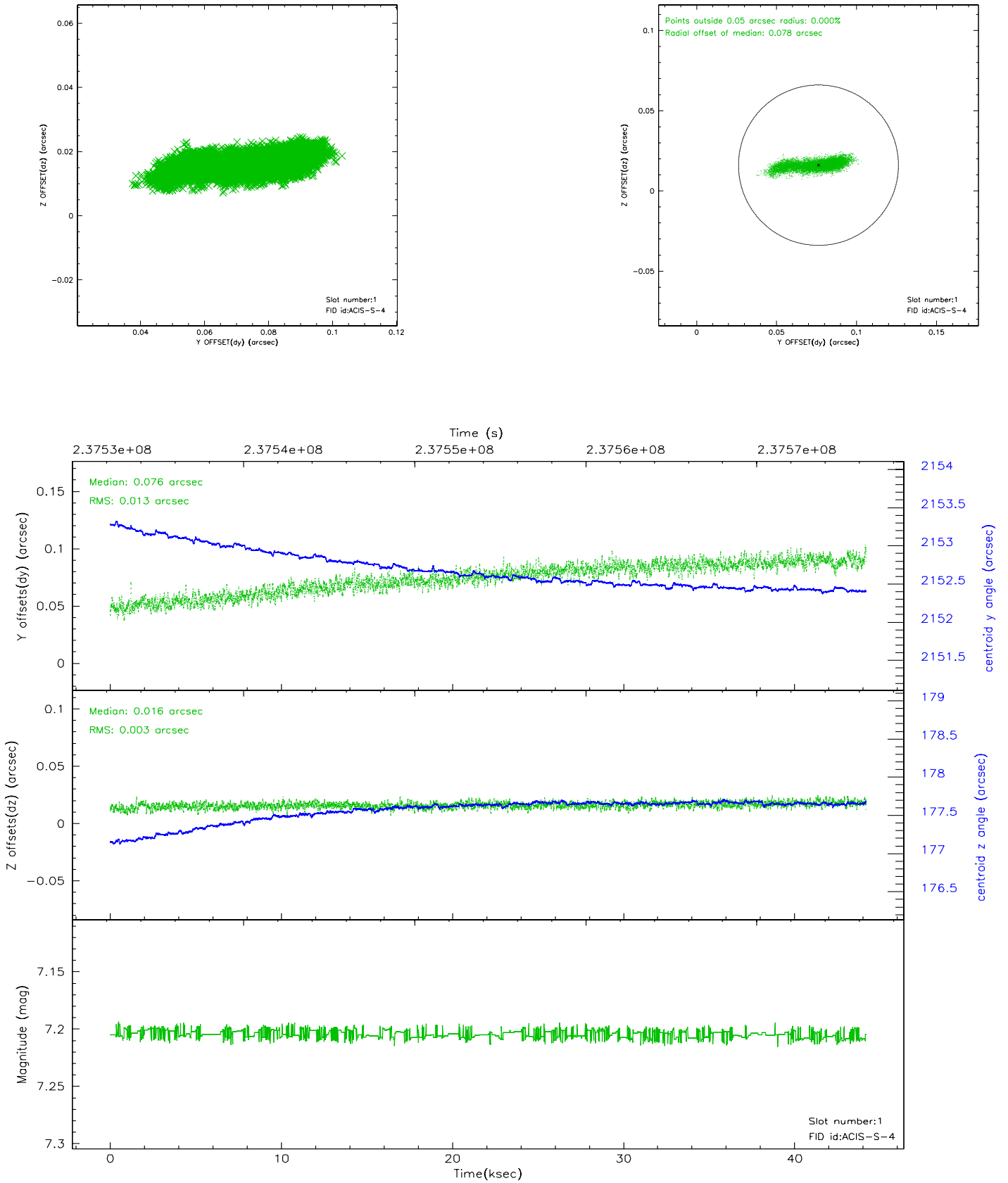


2.5 FID Slots

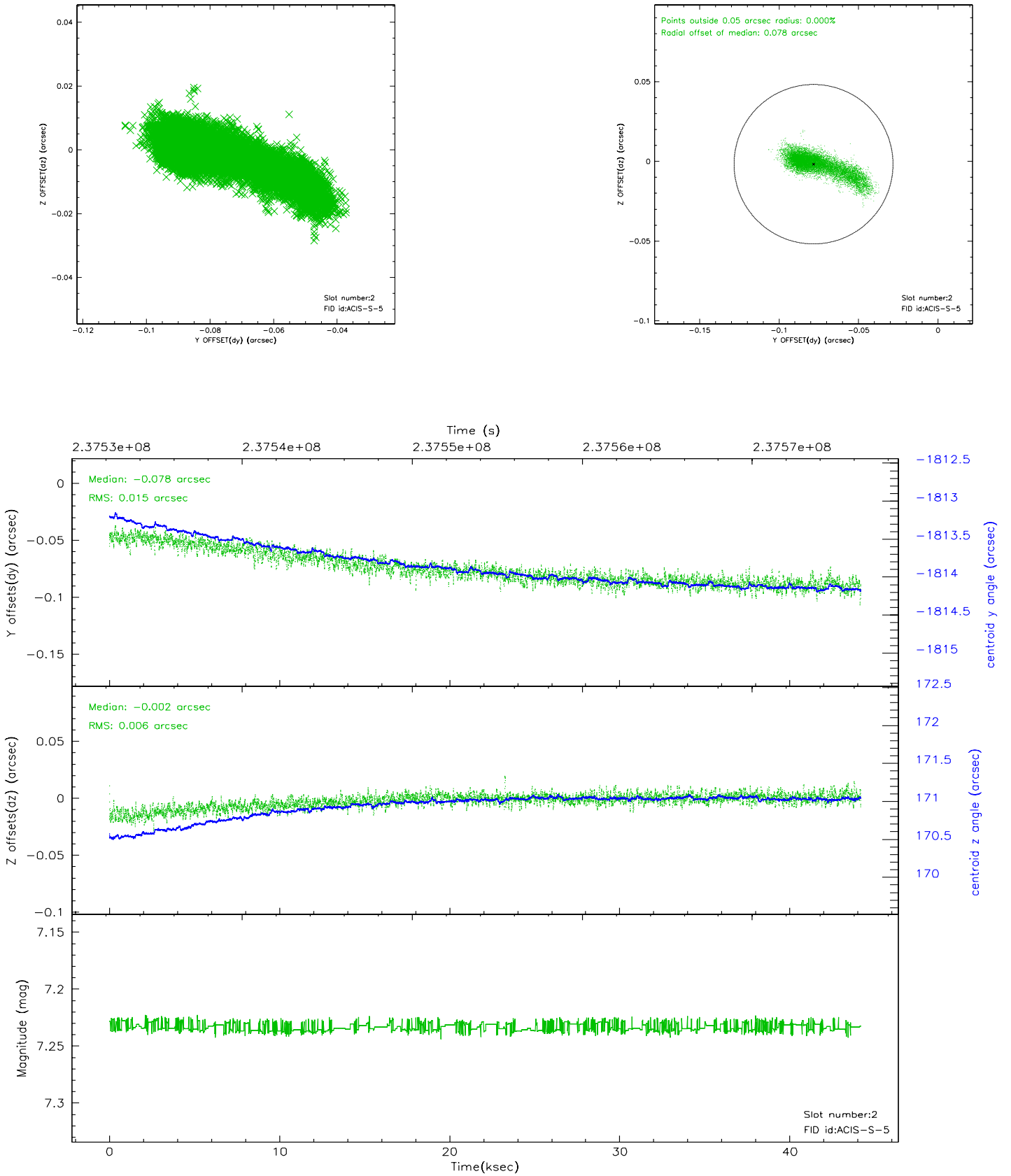
2.5.1 Slot 0



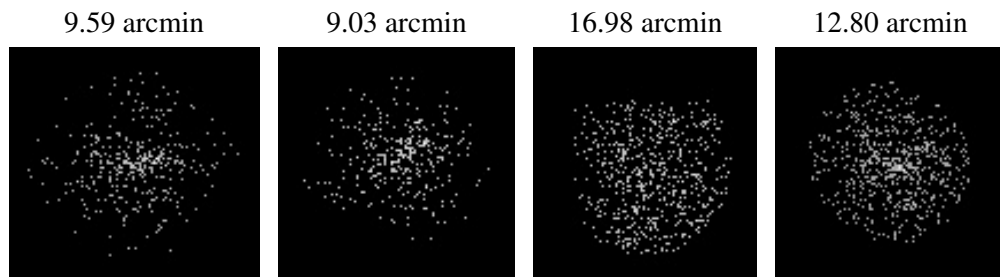
2.5.2 Slot 1



2.5.3 Slot 2



3 Point Sources



A Summary

A.1 Status

V&V Scientist	Beth Sundheim
V&V Date (YYYY-MM-DD)	2006.03.14
V&V Edition	1
V&V Disposition and Status	OK
V&V Charge Time	44.15949

A.2 Comments

Comments for Obi 0

Star in slot 7 has an RMS deviation > 0.200000 arcsec (but is within spec.)