

# V&V Reference Report

## L2 ASCDS Version : 7.6.7

Observation 5577 - L2 Version 002  
Chandra X-Ray Center

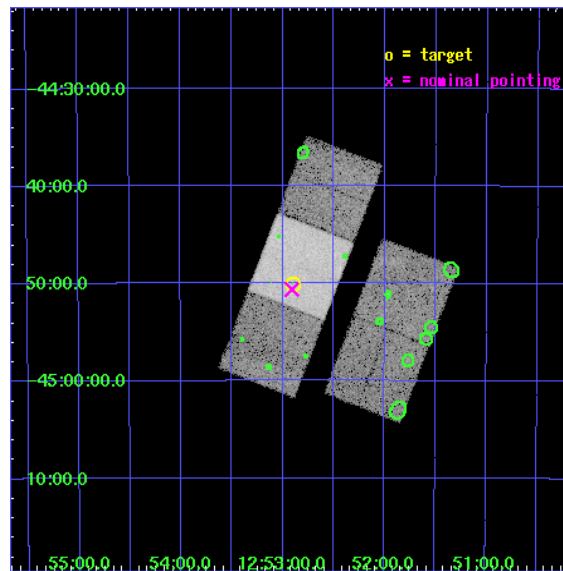
L2 Processing Date: Mar 4 2006

## Contents

<b>1</b>	<b>Front</b>	<b>2</b>
<b>2</b>	<b>OBI</b>	<b>3</b>
2.1	OBI . . . . .	3
2.1.1	Images . . . . .	3
2.1.2	Bias . . . . .	3
2.1.3	Parameters . . . . .	4
2.1.4	Events . . . . .	4
2.2	Compared Parameters . . . . .	5
2.3	Aspect . . . . .	6
2.4	Star Slots . . . . .	9
2.4.1	Slot 3 . . . . .	9
2.4.2	Slot 4 . . . . .	10
2.4.3	Slot 5 . . . . .	11
2.4.4	Slot 6 . . . . .	12
2.4.5	Slot 7 . . . . .	13
2.5	FID Slots . . . . .	14
2.5.1	Slot 0 . . . . .	14
2.5.2	Slot 1 . . . . .	15
2.5.3	Slot 2 . . . . .	16
<b>3</b>	<b>Point Sources</b>	<b>17</b>
<b>A</b>	<b>Summary</b>	<b>18</b>
A.1	Status . . . . .	18
A.2	Comments . . . . .	18

# 1 Front

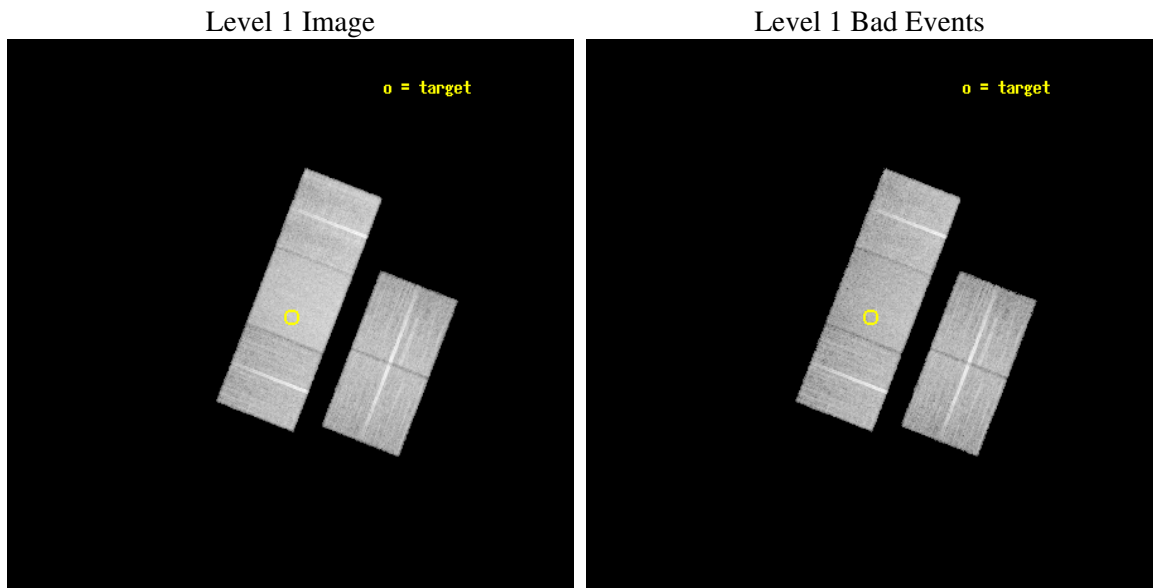
seq_num	500566
obs_id	5577
title	The Energetics and Host Galaxies of X-ray Flashes
observer	Dr Derek Fox
object	XRF 050509C
dtcycle	0
cycle	P
ra_targ	193.224583
dec_targ	-44.834472
ra_nom	193.22722161565
dec_nom	-44.843920912159
roll_nom	291.11132200716
revision	2
ontime	20029.099961489
livetime	19767.405025284
ontime2	20025.958951354
ontime3	20029.099961489
ontime6	20025.958981246
ontime7	20029.099961489
ontime8	20025.958961338
l2events	129576



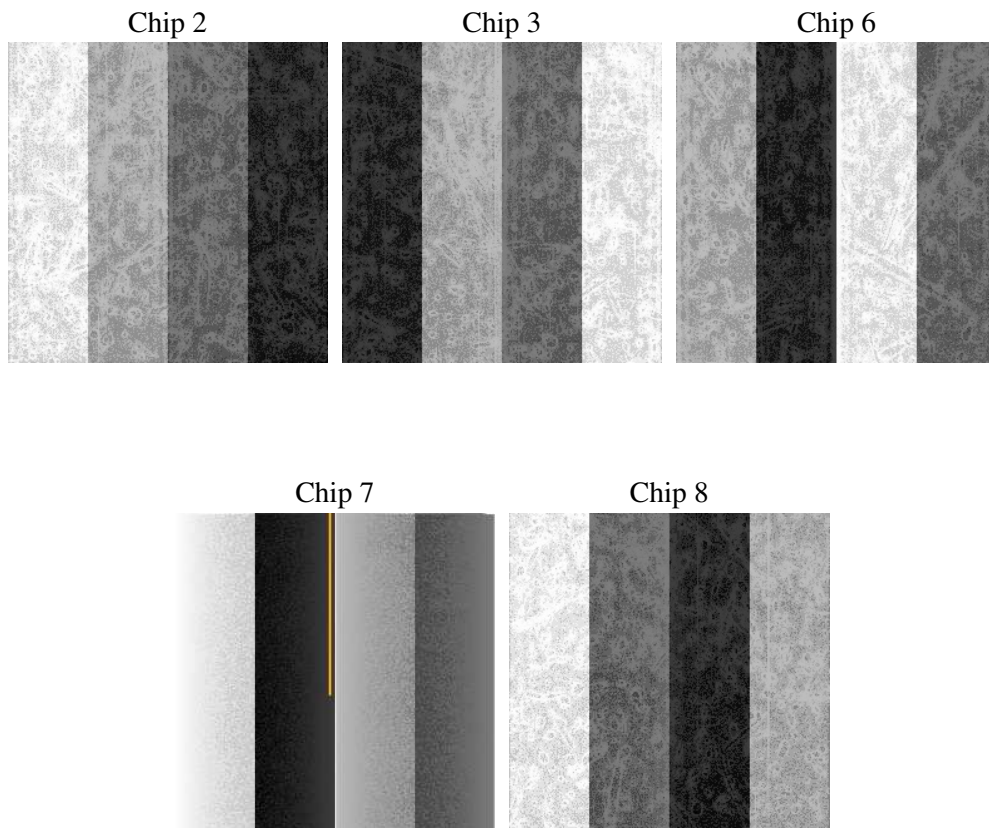
## 2 OBI

### 2.1 OBI

#### 2.1.1 Images



#### 2.1.2 Bias



### 2.1.3 Parameters

obi_num	0
ascdsver	7.6.7
caldbver	3.2.1
date	2006-03-04T04:07:46
revision	2

sched_exp_time	20000.000000
ontime	20033.356193155
ontime2	20030.215163112
ontime3	20033.356173247
ontime6	20030.215193003
ontime7	20033.356193155
ontime8	20030.215193003
l1events	769775

### 2.1.4 Events

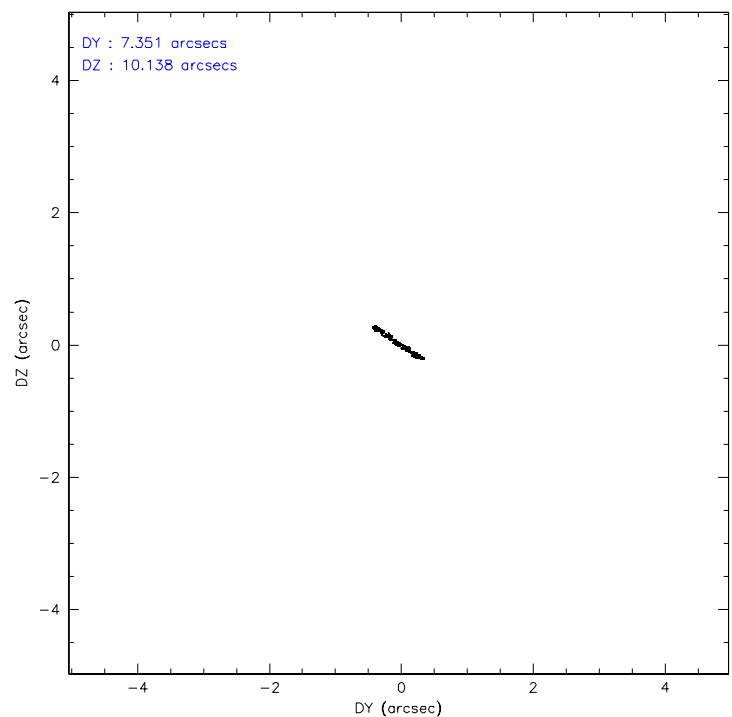
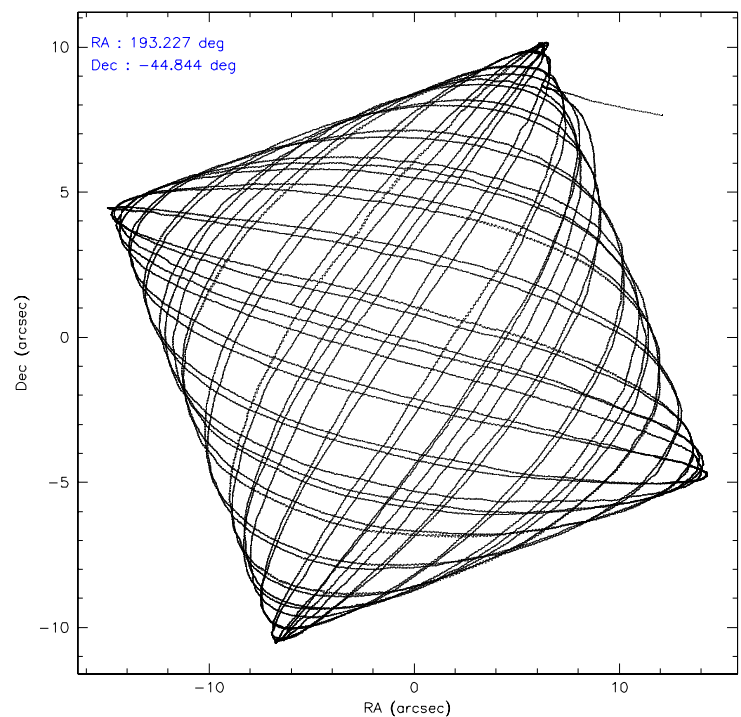
	ccd 2	ccd 3	ccd 6	ccd 7	ccd 8
level 1 events	134699	134718	137275	188509	174574
rejected events	118337	118043	120159	117412	136981
rejected %	87%	87%	87%	62%	78%

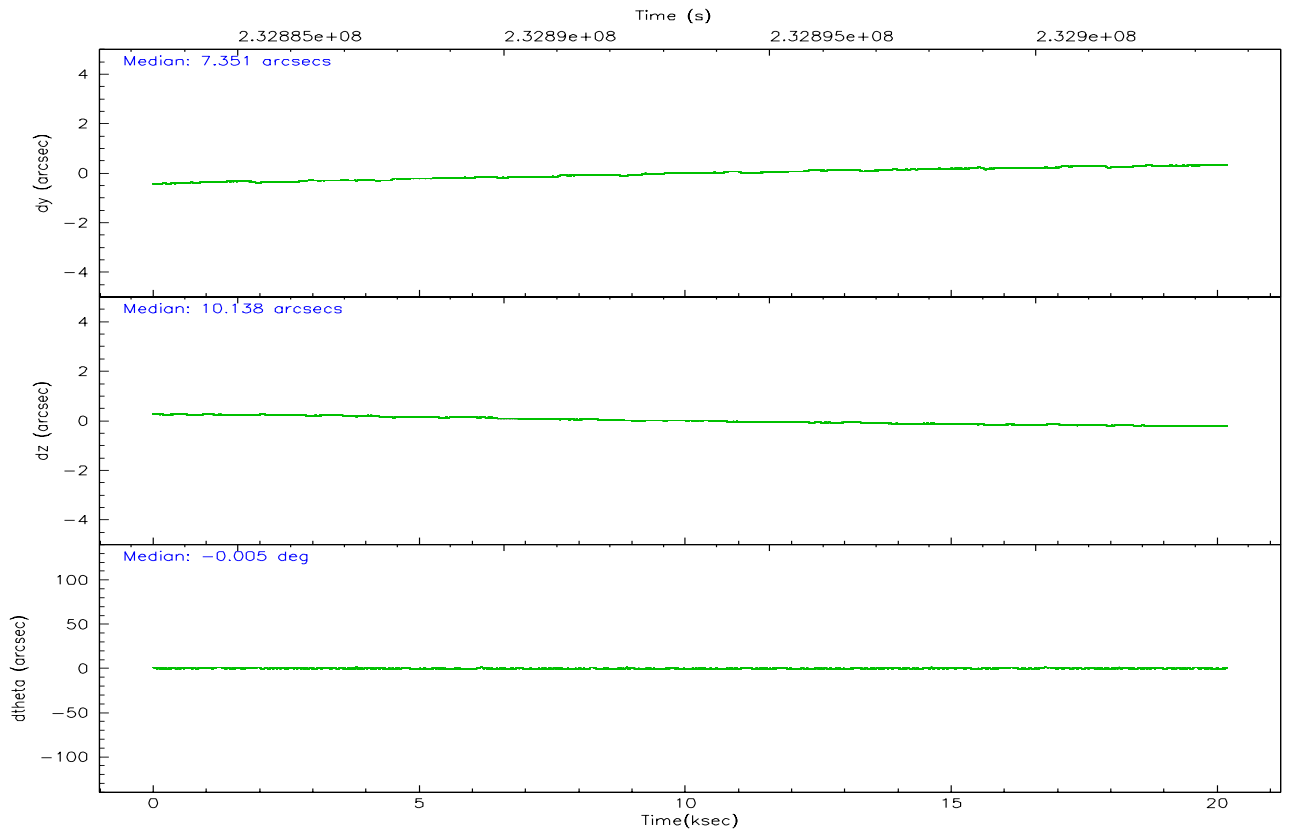
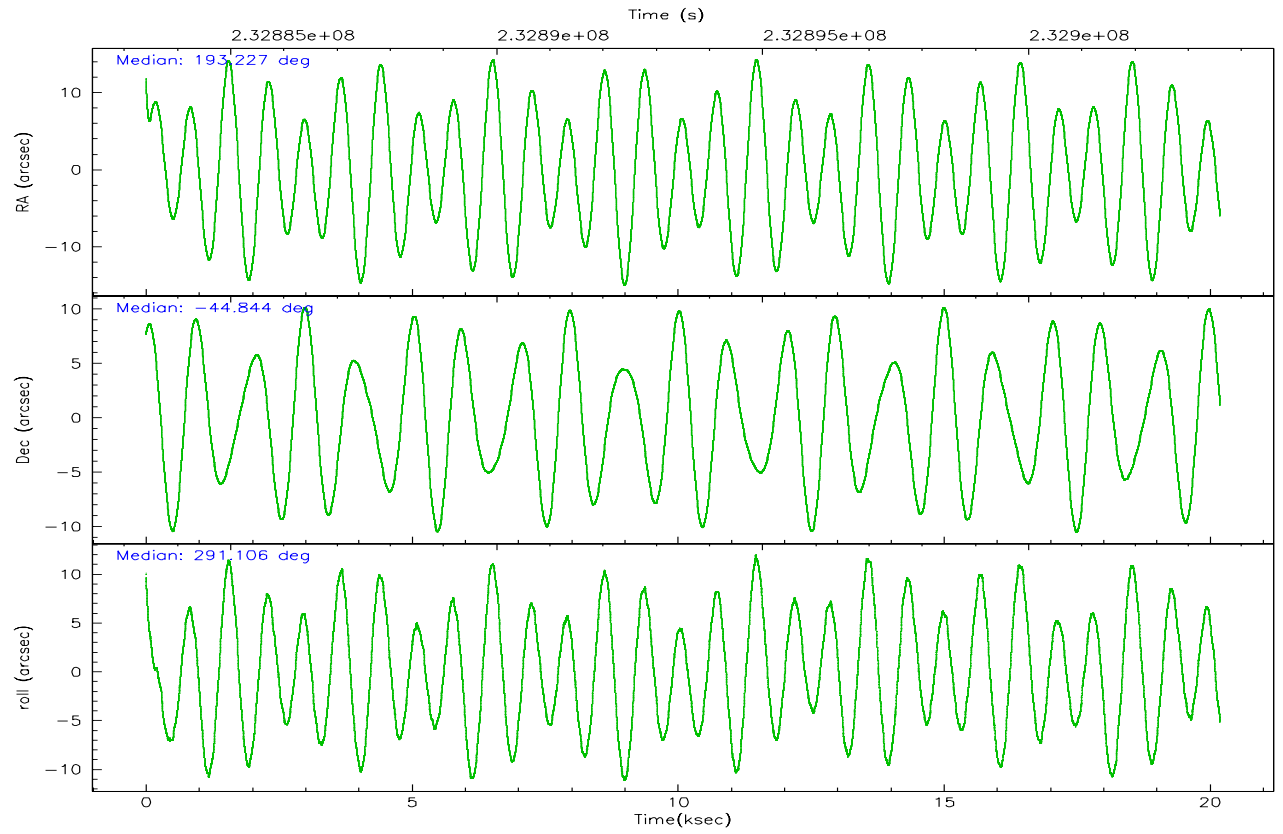
	ccd 2	ccd 3	ccd 6	ccd 7	ccd 8
grade 0 events	7196	7503	6731	3795	12088
	5%	5%	4%	2%	6%
grade 1 events	89	83	51	111	132
	0%	0%	0%	0%	0%
grade 2 events	3338	3162	3631	17704	8196
	2%	2%	2%	9%	4%
grade 3 events	1544	1589	1665	3401	4081
	1%	1%	1%	1%	2%
grade 4 events	1556	1582	1550	3251	3764
	1%	1%	1%	1%	2%
grade 5 events	5324	6211	6633	12259	8361
	3%	4%	4%	6%	4%
grade 6 events	2730	2842	3539	42961	9473
	2%	2%	2%	22%	5%
grade 7 events	112922	111746	113475	105027	128479
	83%	82%	82%	55%	73%

## 2.2 Compared Parameters

Parameter	Planned	Actual	Parameter	Planned	Actual
Instrument	ACIS	ACIS	Obspar format version number	6	6
Detector	ACIS-23678	ACIS-23678	Obspar file type	PREDICTED	ACTUAL
Grating	NONE	NONE	Obspar update status	NONE	UPDATED
Data mode	VFAINT	VFAINT	On-chip summing requested	N	N
Observation mode	POINTING	POINTING	Subarray requested	NONE	NONE
Pointing RA	193.196981	193.2272216156516	Alternating exposures requested	N	N
Pointing Dec	-44.827152	-44.84392091215899	Primary exposure time	0.000000	3.1
Pointing Roll	290.933371	291.1113220071639			
SIM focus pos (mm)	-0.684267	-0.6828225247311905			
SIM defocus (mm)	0	0.001444936568705701			
SIM translation stage pos (mm)	-190.132523	-190.1400660498719			
SIM translation stage offset (mm)	0	0.00754346686406393			
Observation start time	232883598.184000	232882604.904			
Observation start date	2005-05-19T09:52:14	2005-05-19T09:36:44			
Observation end time	232903598.184000	232904907.88001			
Observation end date	2005-05-19T15:25:34	2005-05-19T15:48:27			
Read mode	TIMED	TIMED			

## 2.3 Aspect





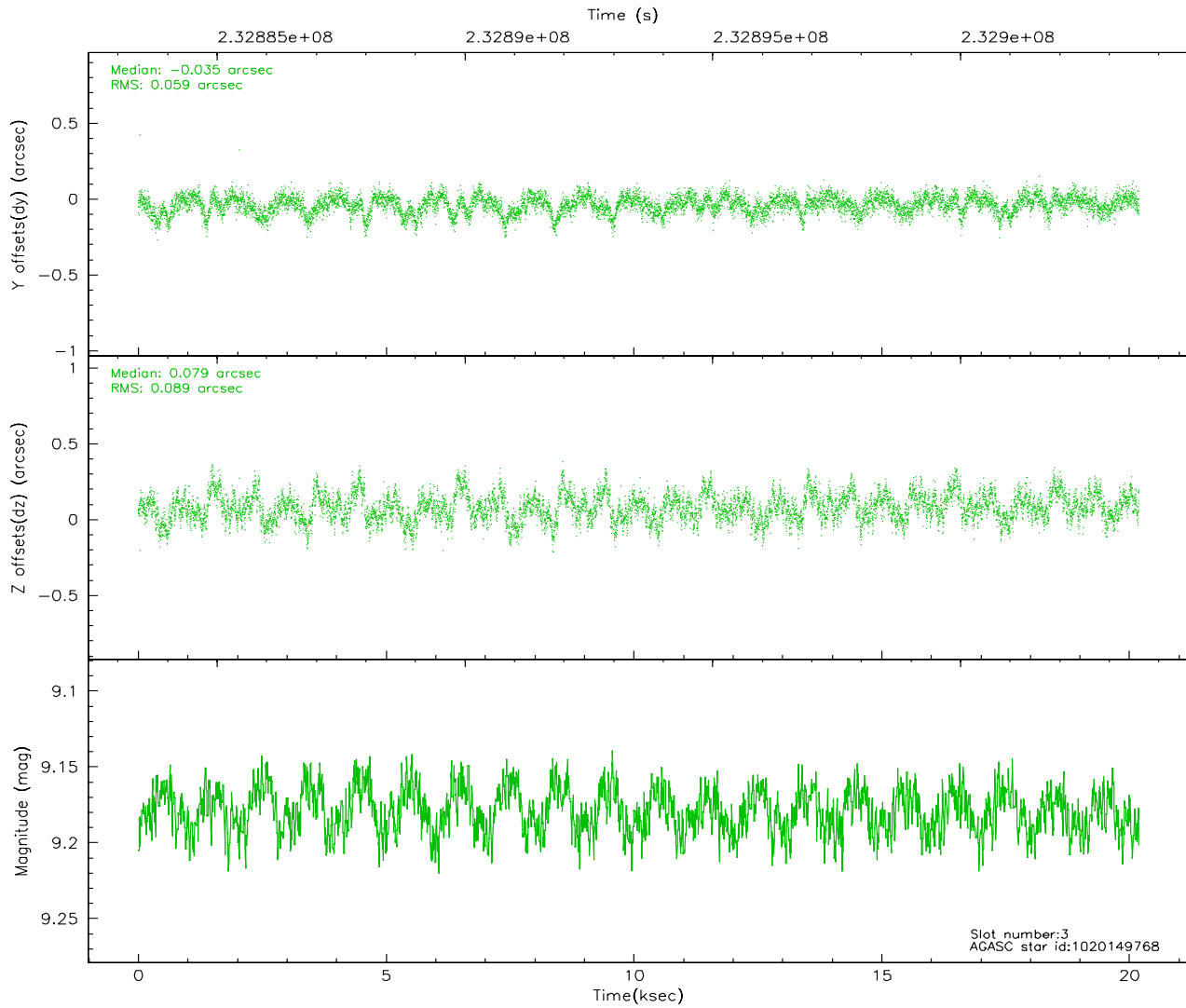
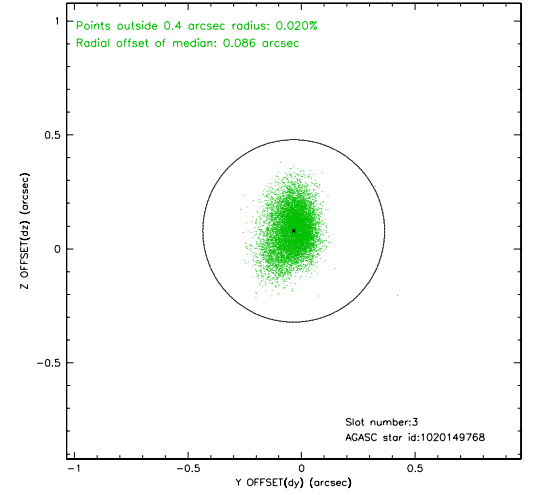
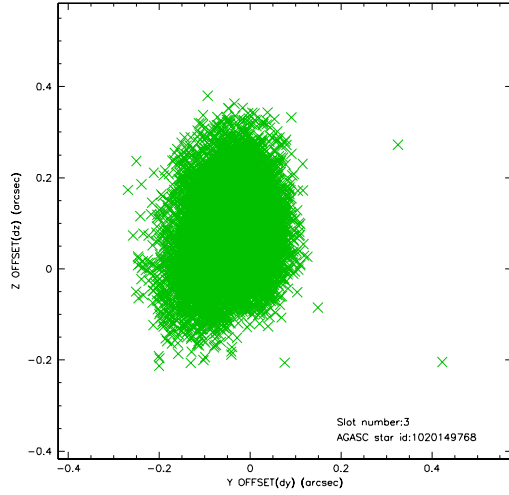
### Slot Statistics

slot	status	id	mag	n_pts	med_dy	med_dz	dr1	dr2	ra	dec	mean_y	mean_z
0	FID	ACIS-S-2	7.10	4926	-0.039	0.002	0.011	0.016	0.000000	0.000000	-760.08	-1731.42
1	FID	ACIS-S-4	7.20	4926	0.058	0.019	0.010	0.017	0.000000	0.000000	2153.16	176.96
2	FID	ACIS-S-5	7.23	4926	-0.052	-0.010	0.011	0.019	0.000000	0.000000	-1812.75	170.72
3	GUIDE	1020149768	9.18	9845	-0.035	0.079	0.112	0.192	192.336729	-44.824922	-780.88	-2052.87
4	GUIDE	1020264984	9.66	9845	-0.042	-0.022	0.097	0.156	193.564538	-44.401472	-1091.39	1429.42
5	GUIDE	1020273696	9.20	9839	0.021	-0.042	0.090	0.143	192.567640	-44.613633	-1287.92	-1233.97
6	GUIDE	1080691784	7.62	9851	-0.066	-0.012	0.060	0.094	193.632822	-45.270592	1888.44	459.92
7	GUIDE	1080694648	9.42	9838	0.126	-0.001	0.090	0.147	193.476401	-45.109196	1203.87	299.93

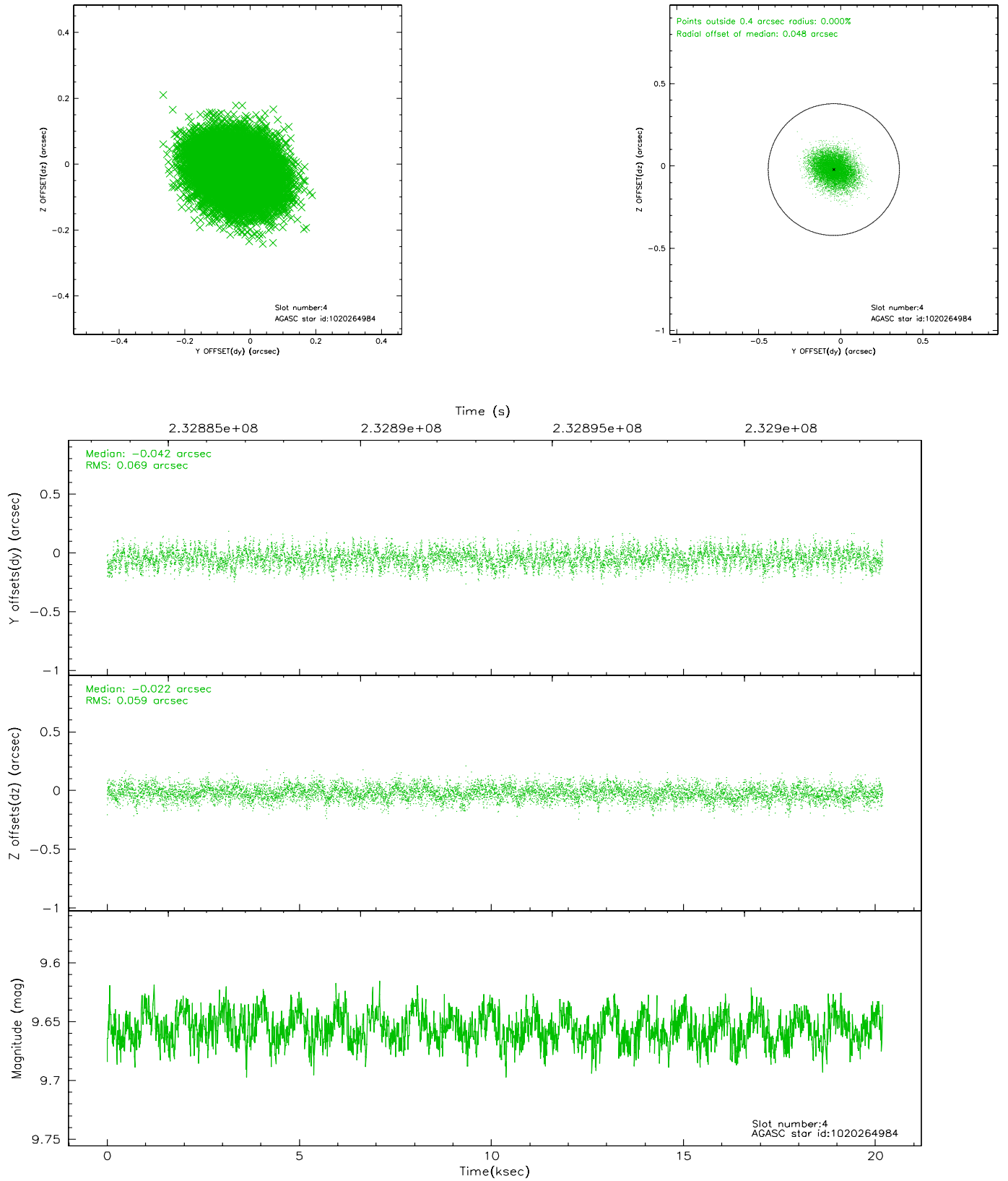


## 2.4 Star Slots

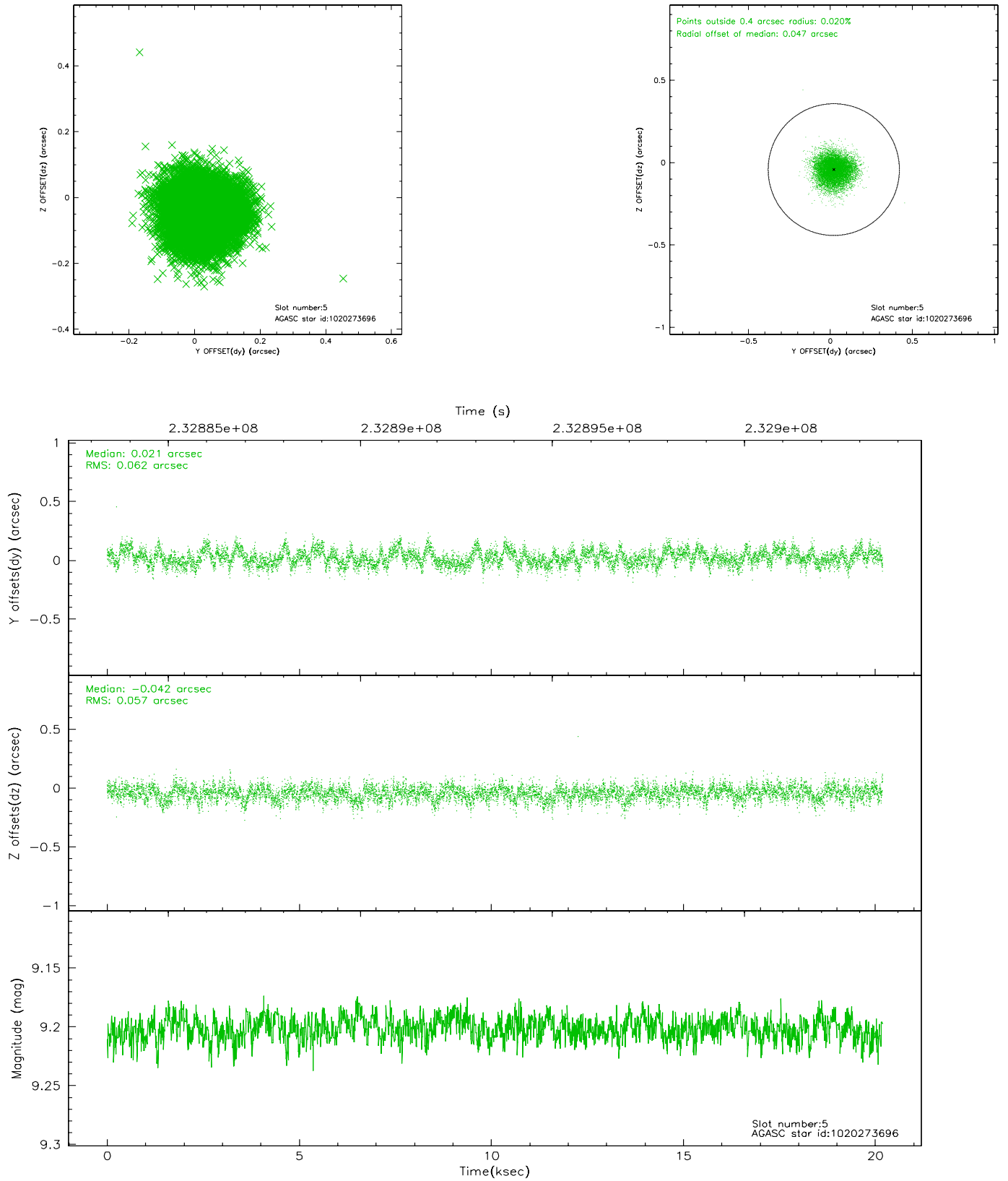
### 2.4.1 Slot 3



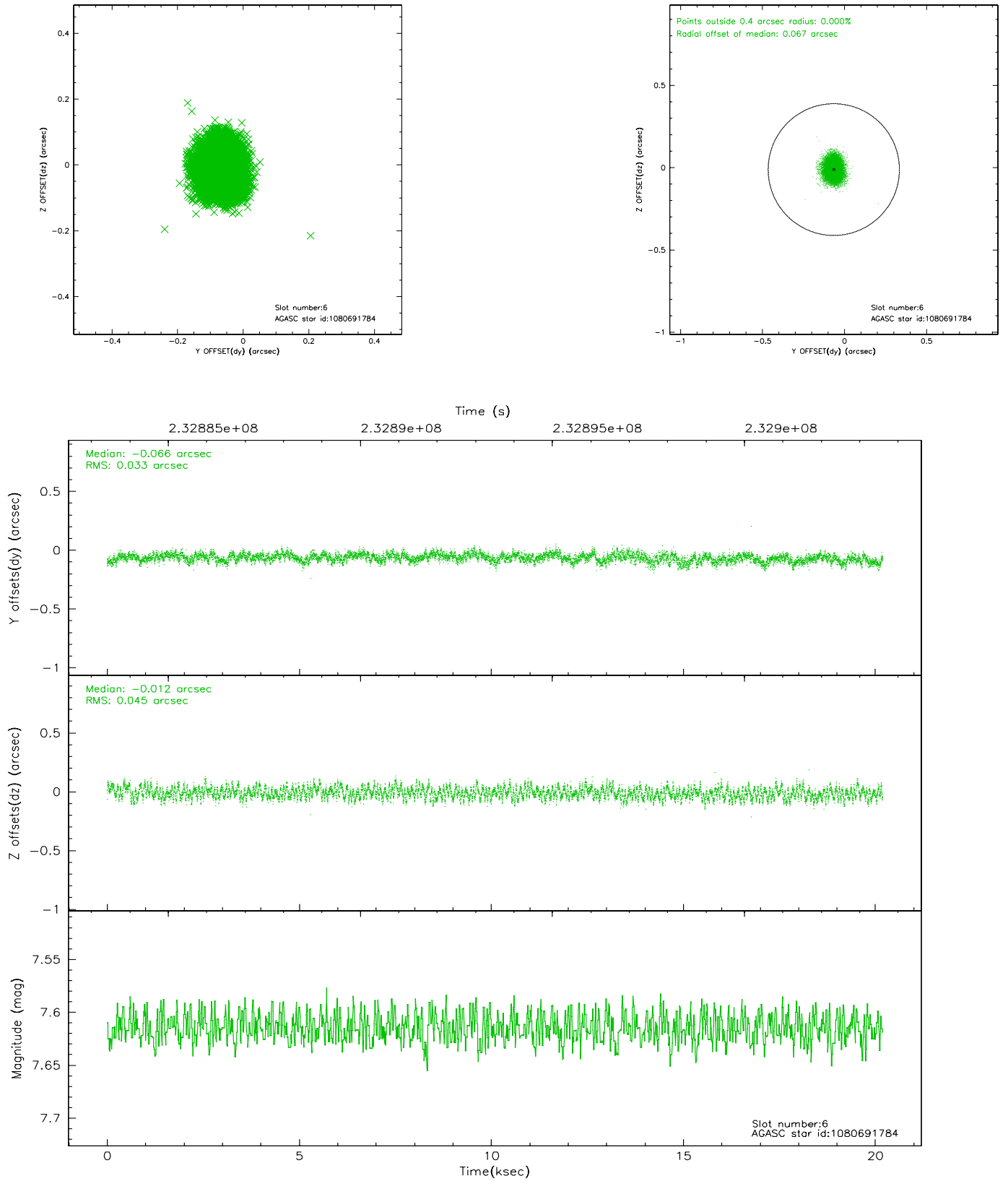
## 2.4.2 Slot 4



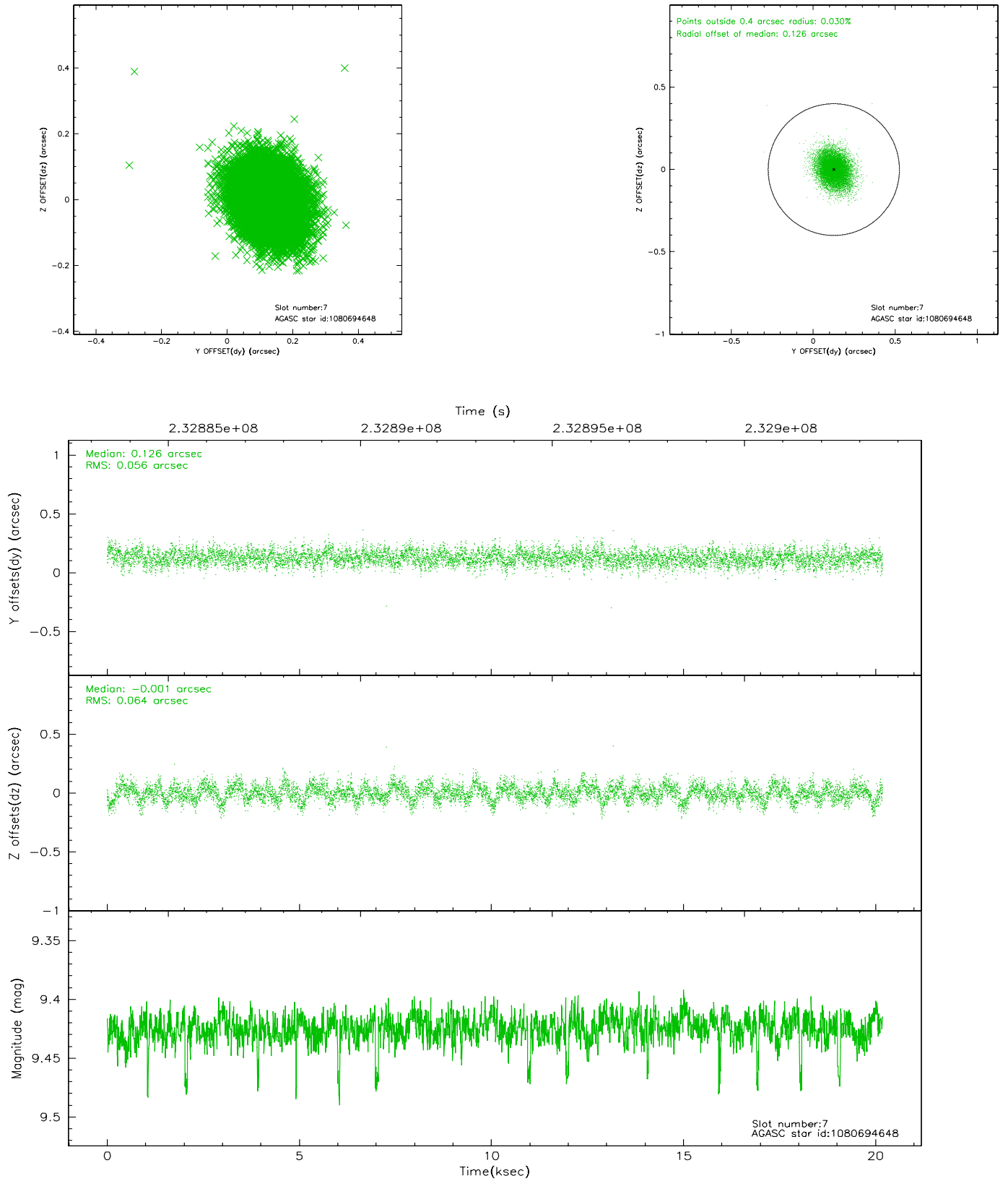
### 2.4.3 Slot 5



## 2.4.4 Slot 6

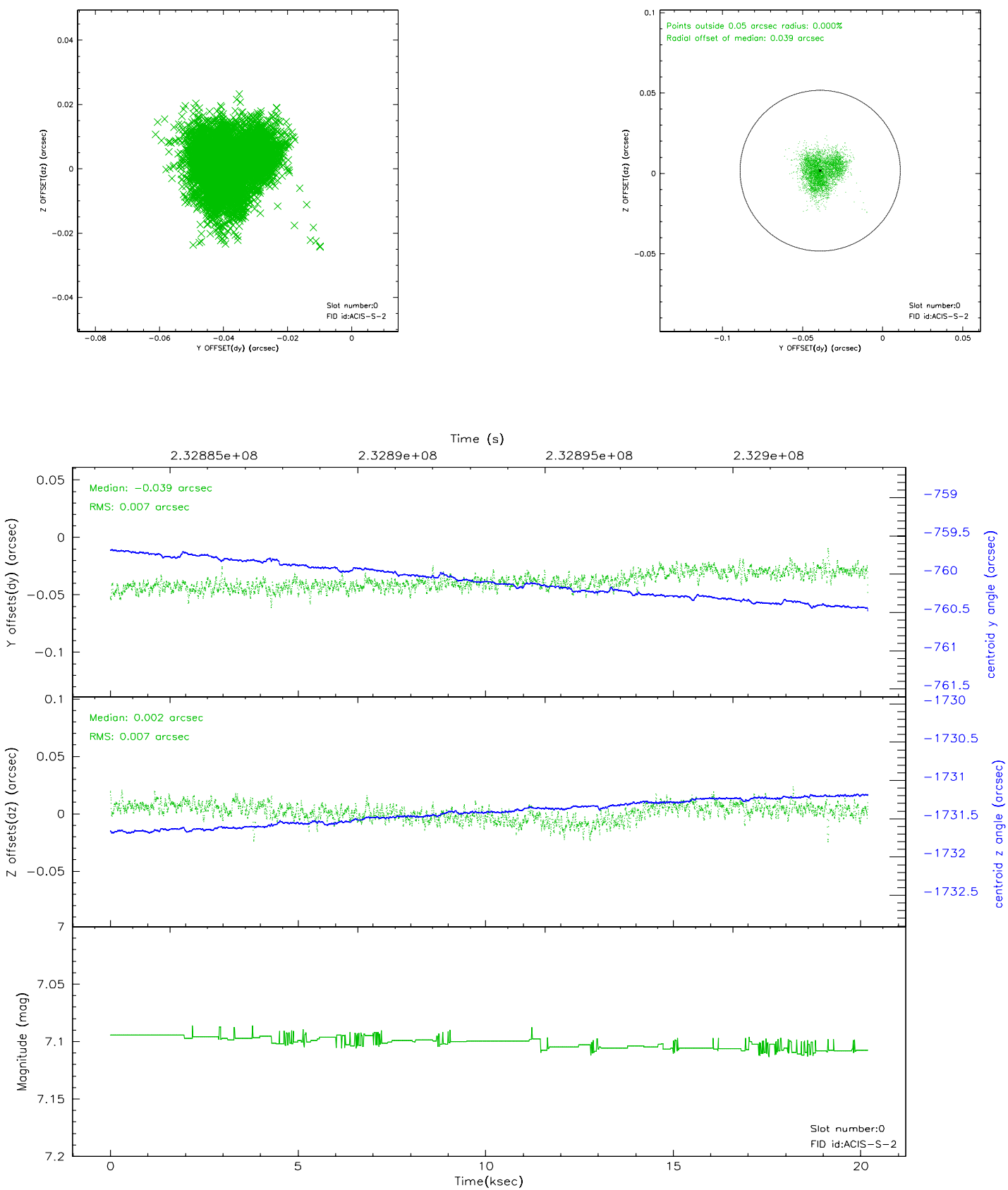


## 2.4.5 Slot 7

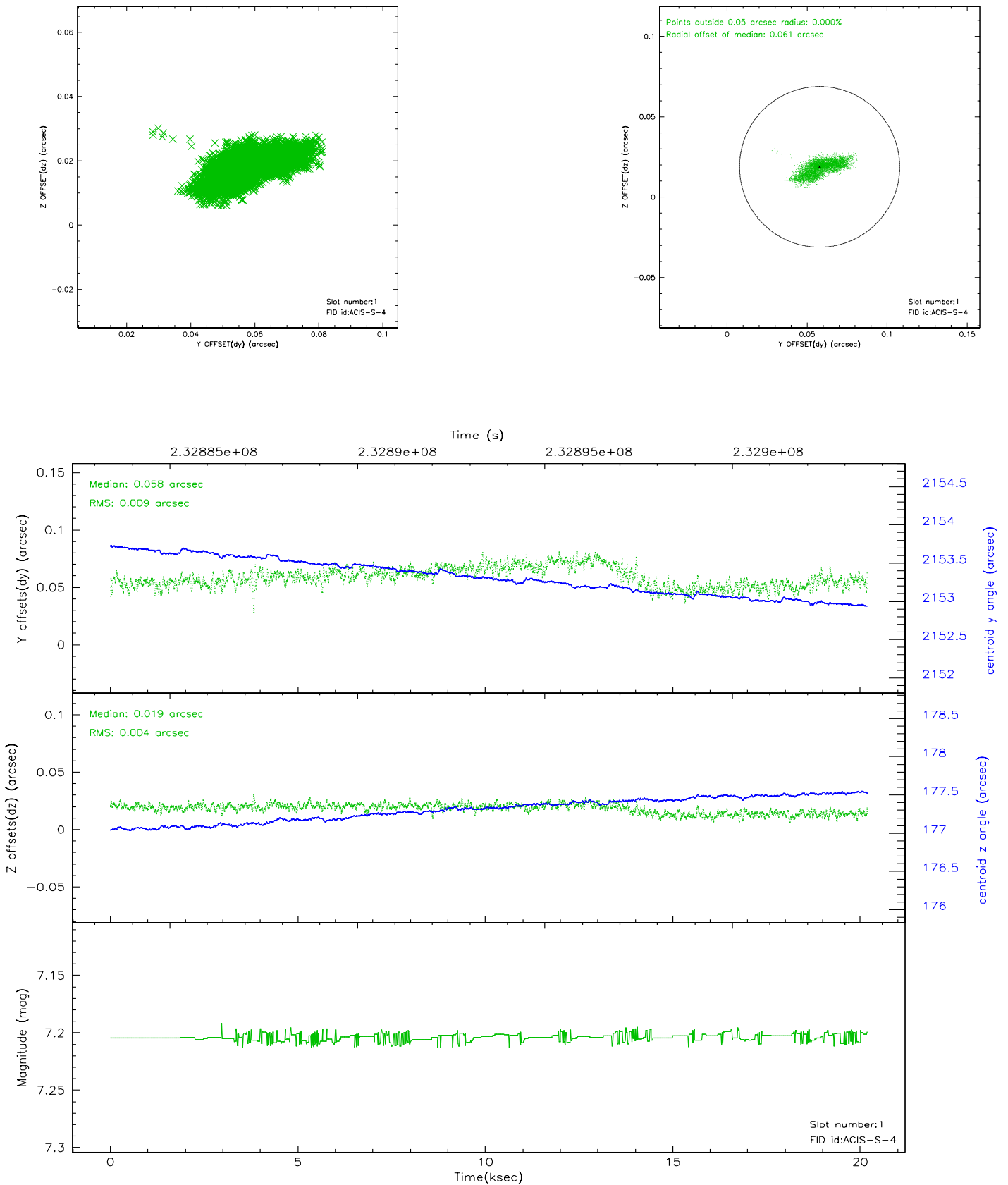


## 2.5 FID Slots

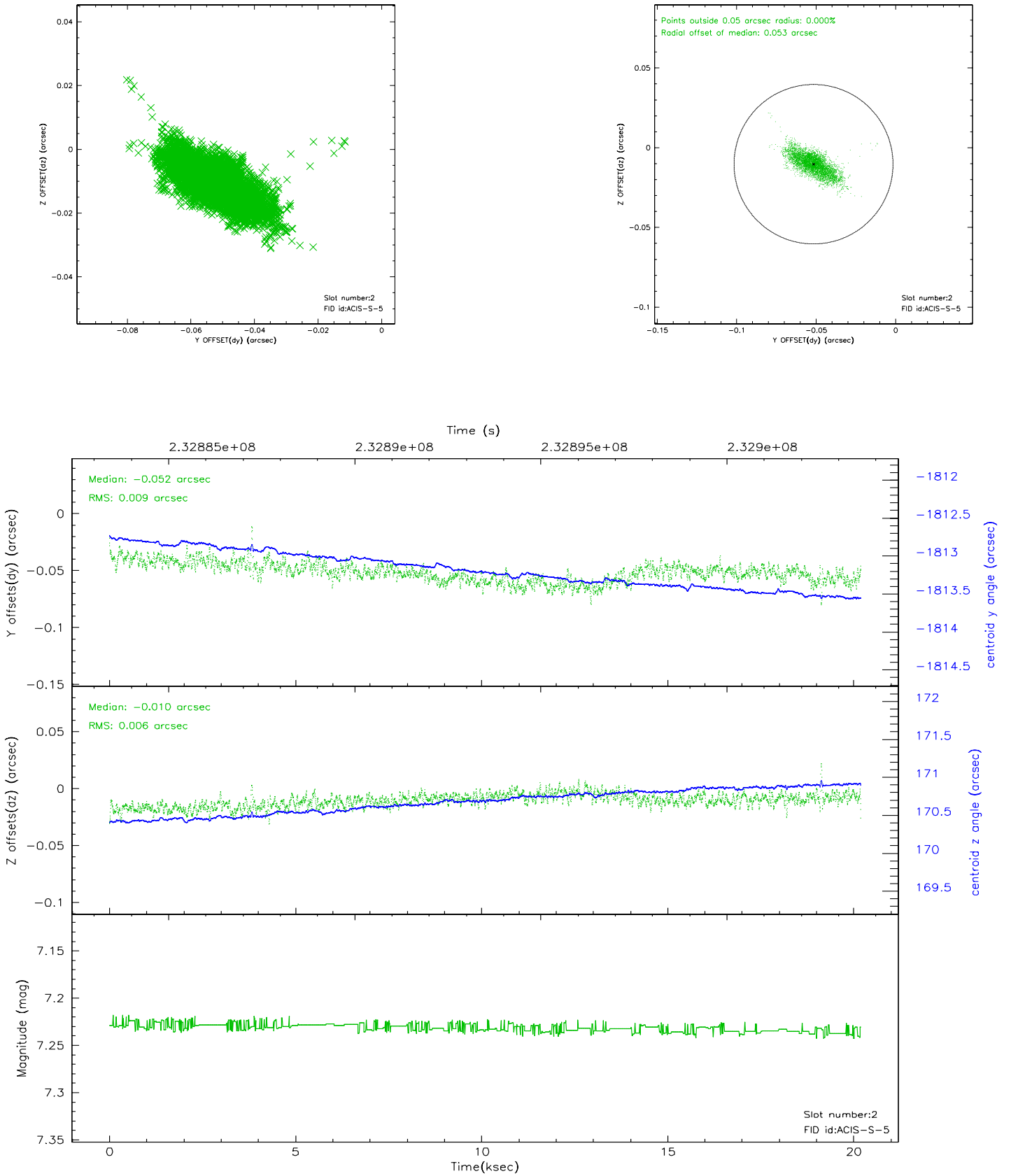
### 2.5.1 Slot 0



## 2.5.2 Slot 1

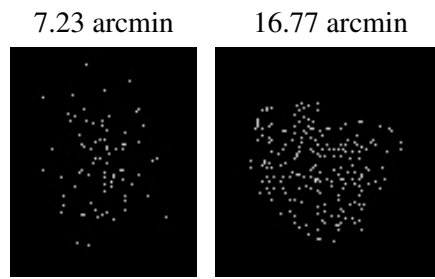


### 2.5.3 Slot 2





### 3 Point Sources



## A Summary

### A.1 Status

V&V Scientist	Beth Sundheim
V&V Date (YYYY-MM-DD)	2006.03.05
V&V Edition	1
V&V Disposition and Status	OK
V&V Charge Time	20.02909

### A.2 Comments