

V&V Reference Report

L2 ASCDS Version : 8.5.1.1

Observation 5557 - L2 Version 4
Chandra X-Ray Center

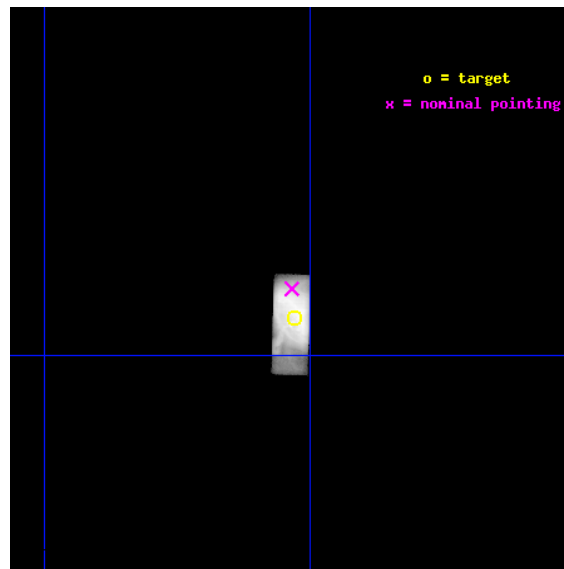
L2 Processing Date : Dec 31 2012

Contents

1	Front	2
2	OBI	3
2.1	OBI	3
2.1.1	Images	3
2.1.2	Parameters	4
2.1.3	Events	4
2.2	Compared Parameters	5
2.3	Aspect	6
2.4	Star Slots	9
2.4.1	Slot 3	9
2.4.2	Slot 4	10
2.4.3	Slot 5	11
2.4.4	Slot 6	12
2.4.5	Slot 7	13
2.5	FID Slots	14
2.5.1	Slot 0	14
2.5.2	Slot 1	15
2.5.3	Slot 2	16
3	Gratings	17
3.1	HEG Arm	17
3.2	MEG Arm	19
A	Summary	21
A.1	Status	21
A.2	Comments	21

1 Front

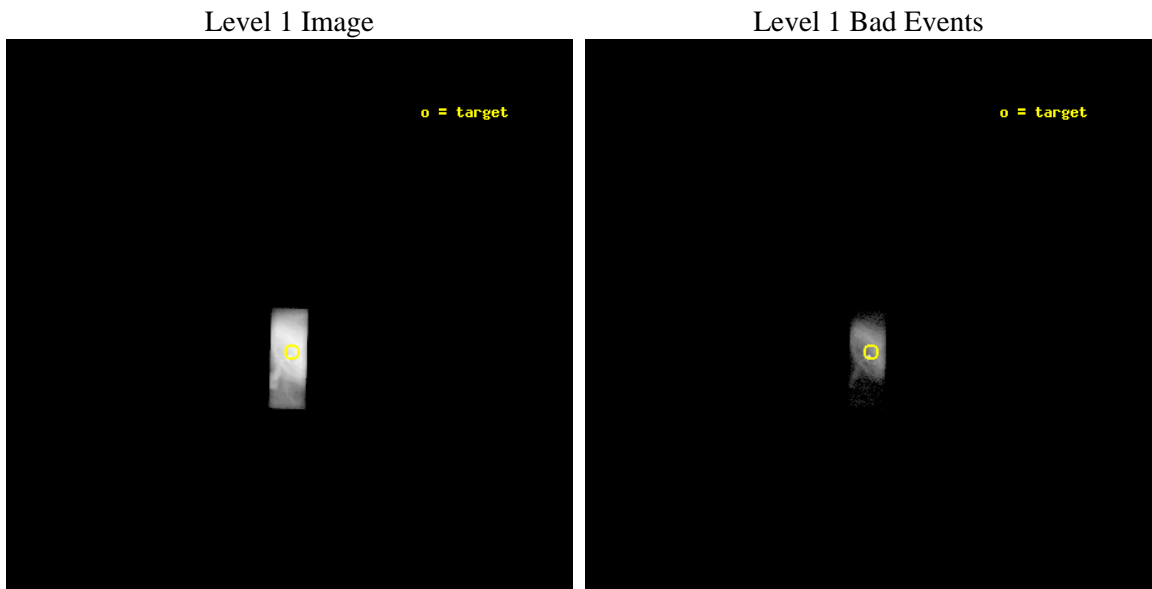
seq_num	500546	Sequence number
obs_id	5557	Observation id
title	Monitoring of the Relativistic Magnetohydrodynamic Shock in the Crab Nebula	Proposal title
observer	Dr Koji Mori	Principal investigator
object	The Crab Nebula	Source name
dtcycle	0	
cycle	P	events from which exps? Prim/Second/Both
ra_targ	83.632083	Observer's specified target RA [deg]
dec_targ	22.016472	Observer's specified target Dec [deg]
ra_nom	83.63349986853	Nominal RA [deg]
dec_nom	22.028867686976	Nominal Dec [deg]
roll_nom	91.626781151746	Nominal Roll [deg]
revision	4	Processing version of data
ontime	10183.800404668	Sum of GTIs [s]
livetime	8958.3043672307	Livetime [s]
ontime7	10183.800404668	Sum of GTIs [s]
l2events	2507218	Number of level 2 events



2 OBI

2.1 OBI

2.1.1 Images



2.1.2 Parameters

obi_num	0	Obi number	sched_exp_time	10000.000000	[s] Scheduled observation exposure time
ascdsver	8.5.1.1	Processing system revision	ontime	10183.800404668	Sum of GTIs [s]
caldsver	4.5.5	 	ontime7	10183.800404668	Sum of GTIs [s]
date	2012-12-30T23:33:48	Date and time of file creation	l1events	2667383	Number of level 1 events
revision	4	Processing version of data			

2.1.3 Events

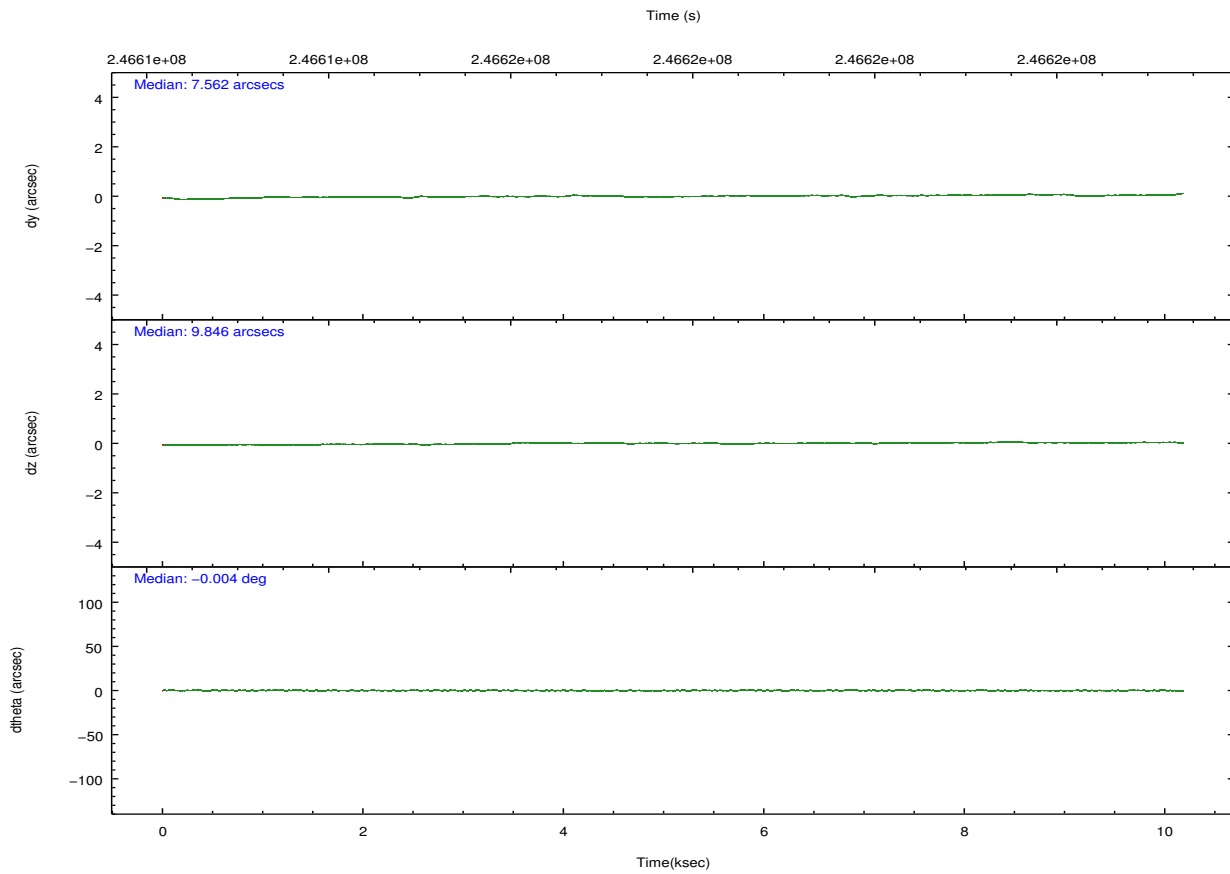
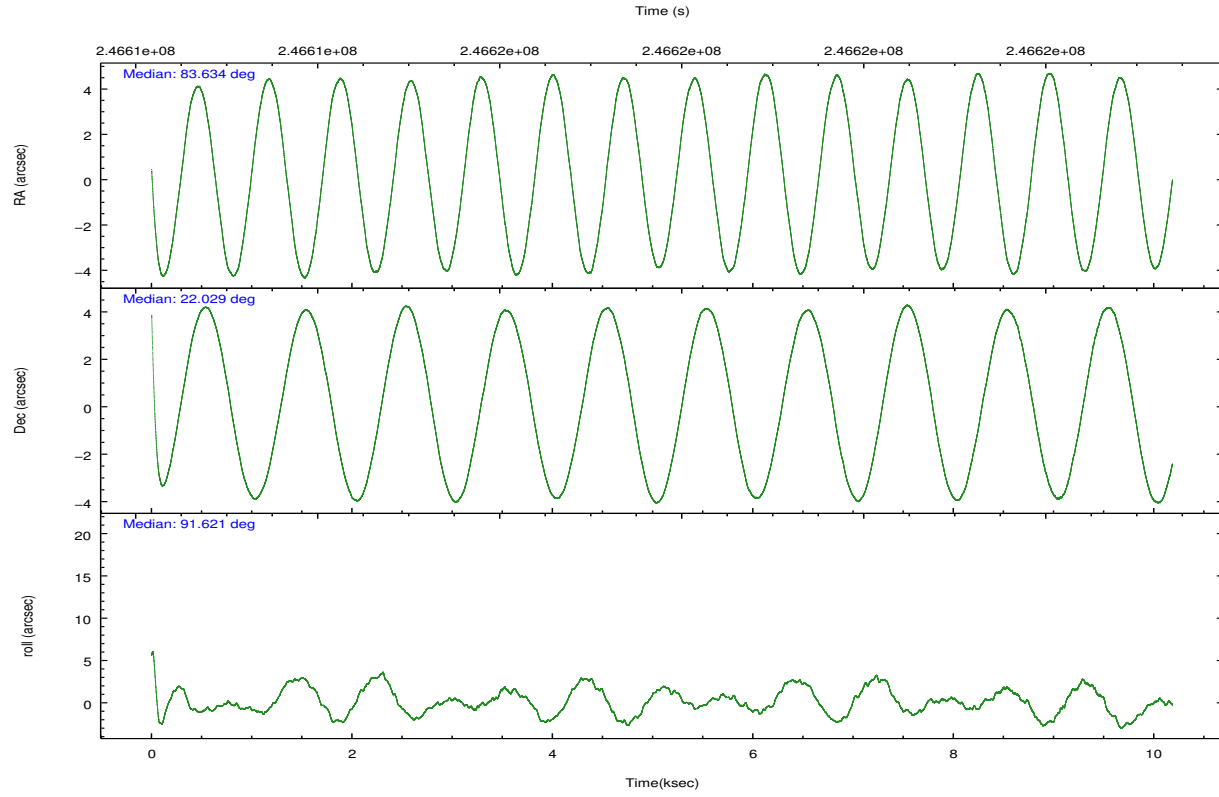
	ccd 7
level 1 events	2667383
rejected events	121185
rejected %	4%

	ccd 7
grade 0 events	515936
	19%
grade 1 events	9757
	0%
grade 2 events	654110
	24%
grade 3 events	290729
	10%
grade 4 events	280536
	10%
grade 5 events	40207
	1%
grade 6 events	828218
	31%
grade 7 events	47890
	1%

2.2 Compared Parameters

Parameter	Planned	Actual	Parameter	Planned	Actual
Instrument	ACIS	ACIS	Obspar format version number	7	7
Detector	ACIS-7	ACIS-7	Obspar file type	PREDICTED	ACTUAL
Grating	HETG	HETG	Obspar update status	NONE	UPDATED
Data mode	GRADED	GRADED	Number of optional ACIS chips dropped	0	0
Observation mode	POINTING	POINTING	On-chip summing requested	N	N
[deg] Pointing RA	83.649279	83.6334998685299	Subarray requested	CUSTOM	CUSTOM
[deg] Pointing Dec	22.005877	22.02886768697588	Subarray start row	127	127
[deg] Pointing Roll	91.464220	91.62678115174612	Subarray row count	101	101
[s] Window start time (MET)	246499264.184000	246499264.184000	Alternating exposures requested	N	N
[s] Window stop time (MET)	247104064.184000	247104064.184000	[s] Primary exposure time	0.000000	0.3
[mm] SIM focus pos	-0.684267	-0.6828225247311905			
[mm] SIM defocus	0	0.001444936568705701			
[mm] SIM translation stage pos	-182.132523	-182.1370004450064			
[mm] SIM translation stage offset	-8	-7.995522138001405			
[s] Observation start time (MET)	246612875.184000	246612060.79569			
Observation start date	2005-10-25T07:33:31	2005-10-25T07:21:00			
[s] Observation end time (MET)	246622875.184000	246623750.92123			
Observation end date	2005-10-25T10:20:11	2005-10-25T10:35:50			
Read mode	TIMED	TIMED			

2.3 Aspect

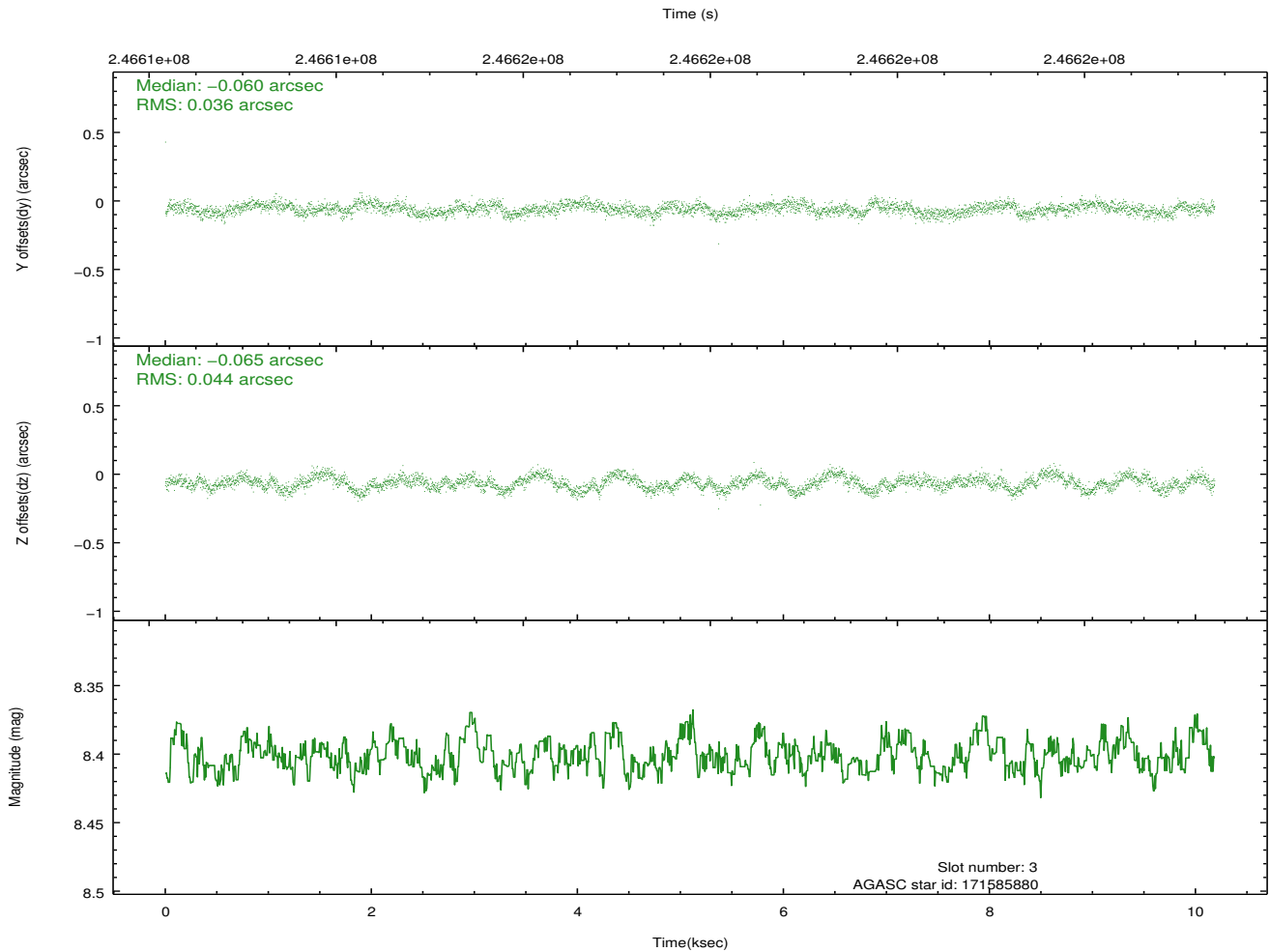
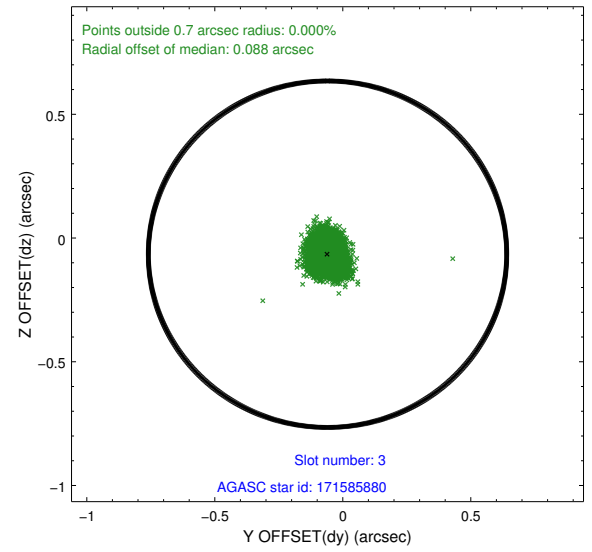
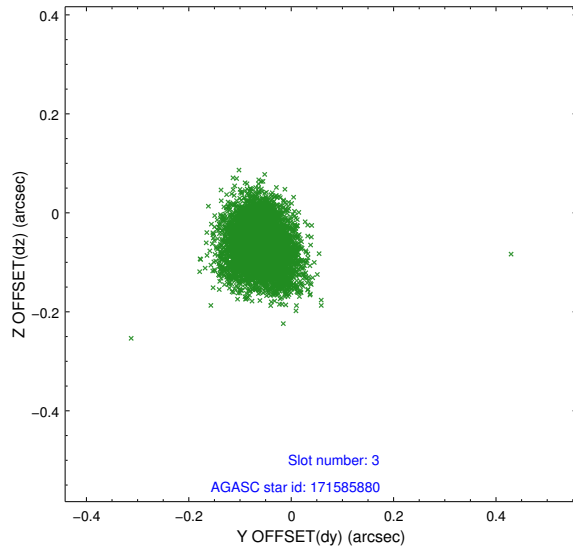


Slot Statistics

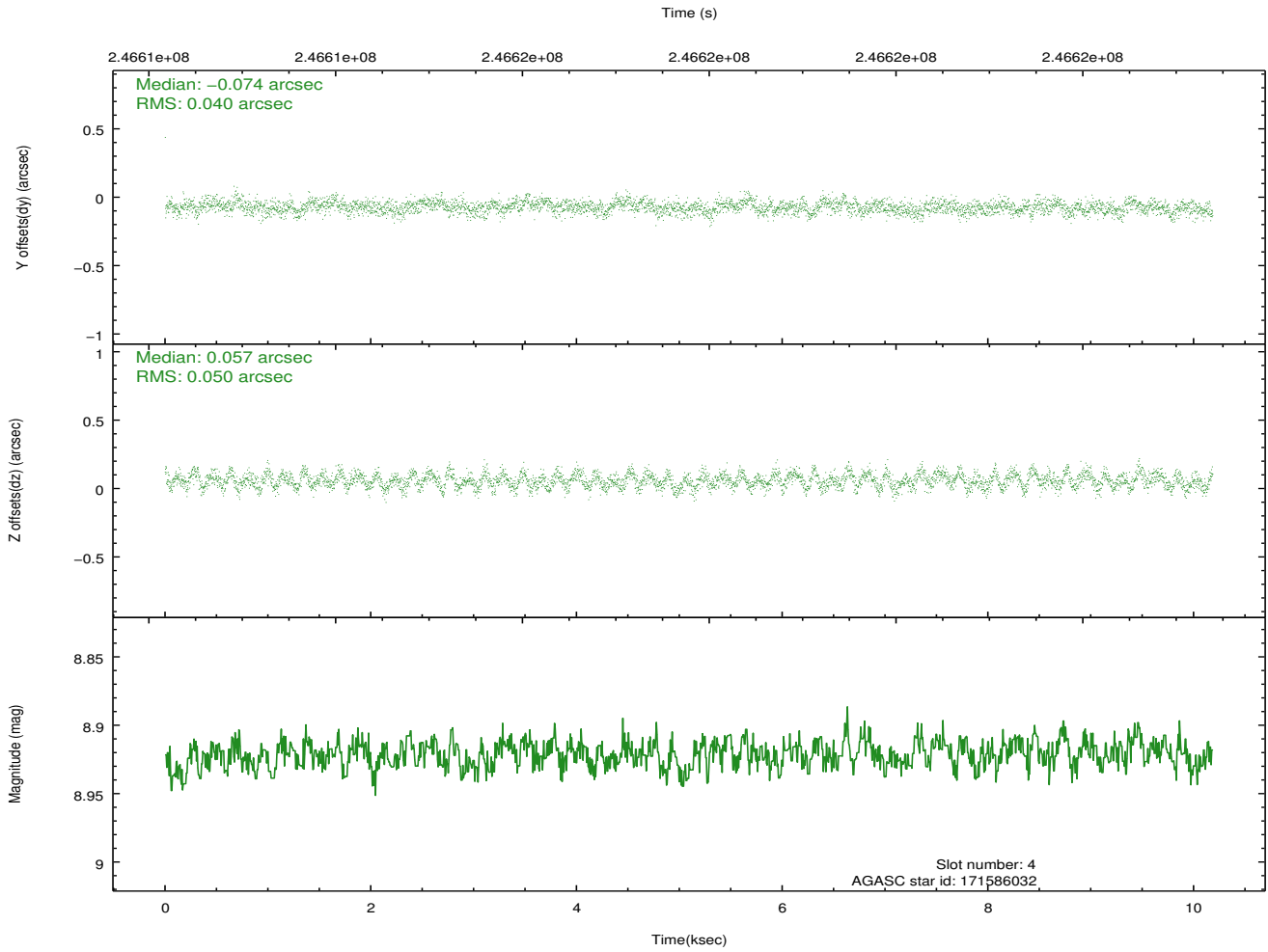
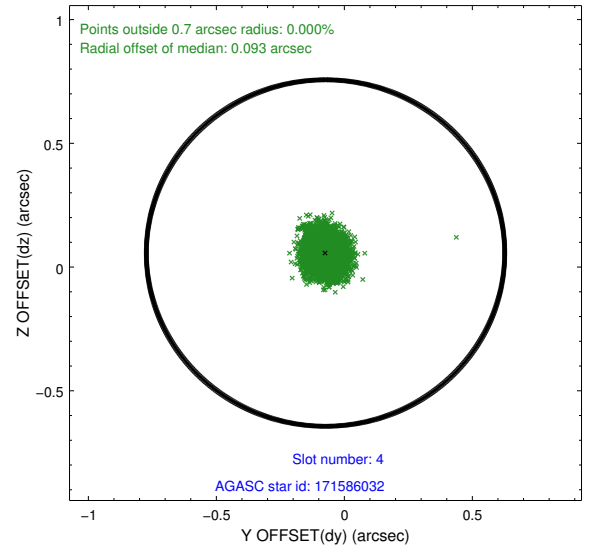
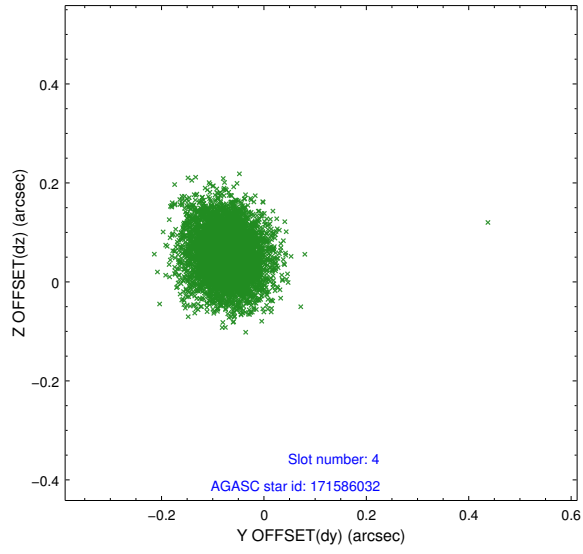
slot	status	id	mag	n_pts	med_dy	med_dz	dr1	dr2	ra	dec	mean_y	mean_z
0	FID	ACIS-S-2	7.09	2485	-0.071	-0.094	0.006	0.011	0.000000	0.000000	-759.81	-1895.89
1	FID	ACIS-S-4	7.18	2485	0.119	0.059	0.005	0.009	0.000000	0.000000	2153.41	12.14
2	FID	ACIS-S-5	7.23	2485	-0.079	0.042	0.006	0.010	0.000000	0.000000	-1812.00	6.37
3	GUIDE	171585880	8.40	4969	-0.060	-0.065	0.061	0.097	83.676260	22.176319	611.42	-105.53
4	GUIDE	171586032	8.92	4969	-0.074	0.057	0.068	0.109	83.950197	22.083225	254.23	-1010.52
5	GUIDE	171721904	9.19	4962	-0.030	0.136	0.107	0.163	84.272676	22.116922	351.37	-2088.70
6	GUIDE	243941560	8.31	4966	-0.086	0.071	0.069	0.106	83.733264	22.568598	2018.36	-330.88
7	GUIDE	171597832	9.15	4963	0.261	-0.197	0.087	0.141	83.183230	21.366702	-2257.18	1620.35

2.4 Star Slots

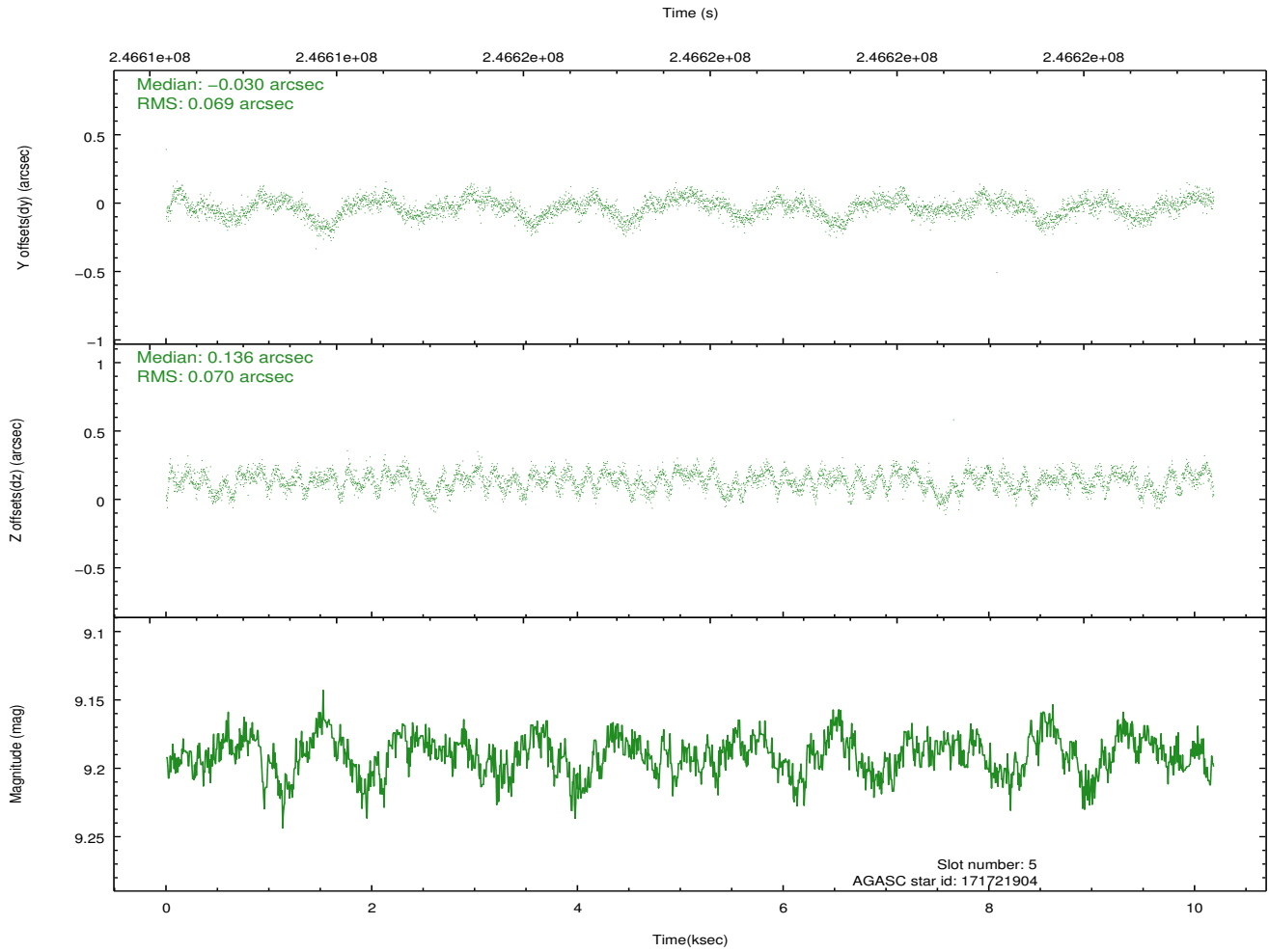
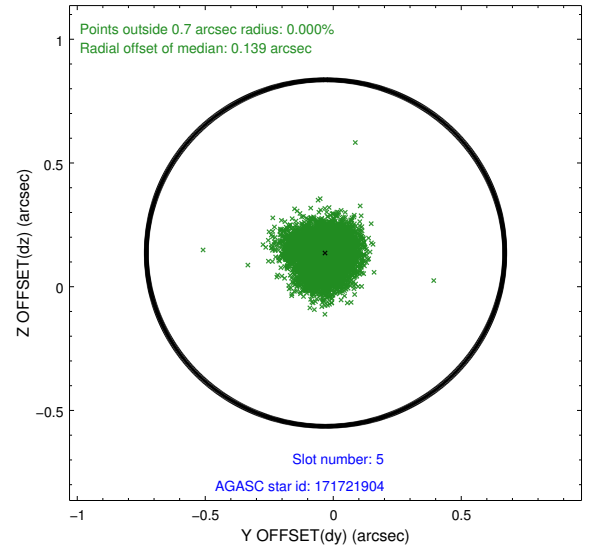
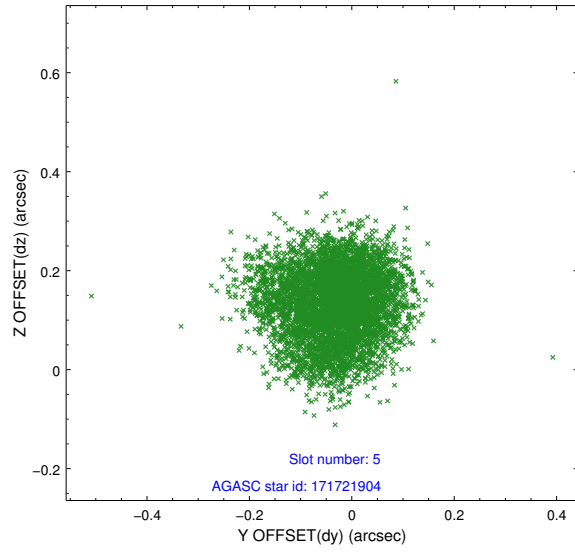
2.4.1 Slot 3



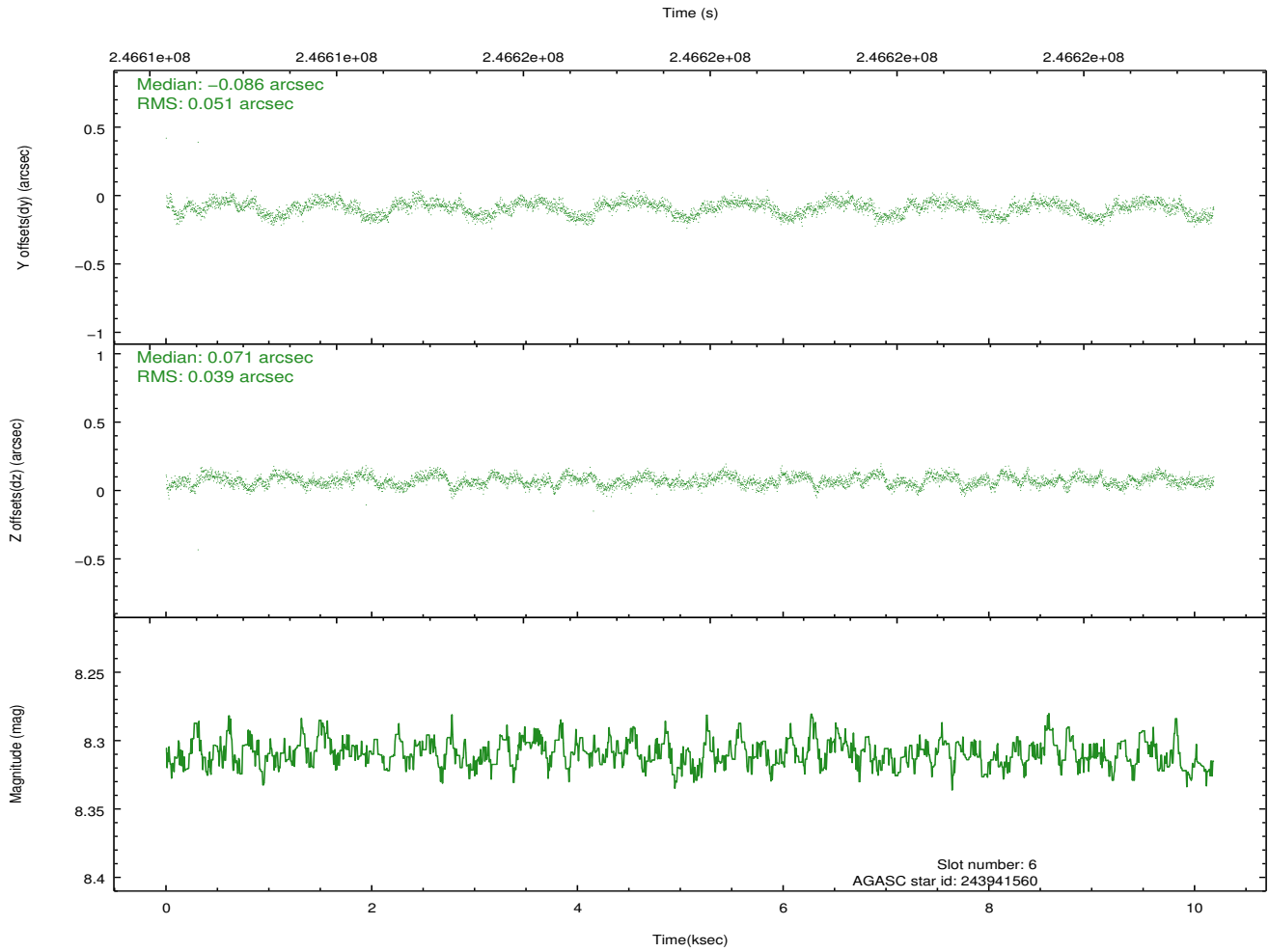
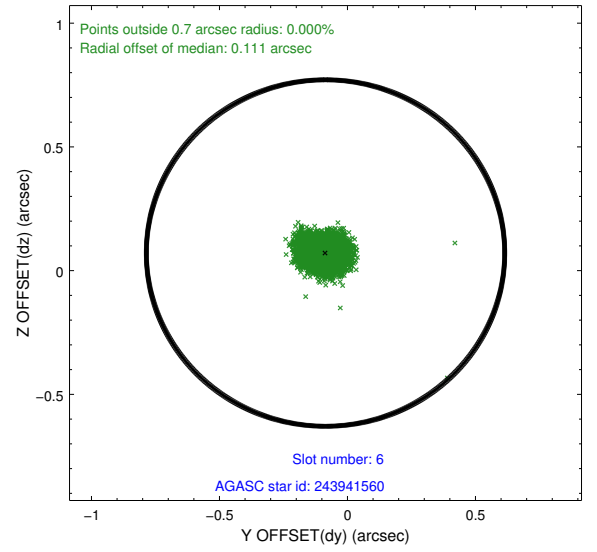
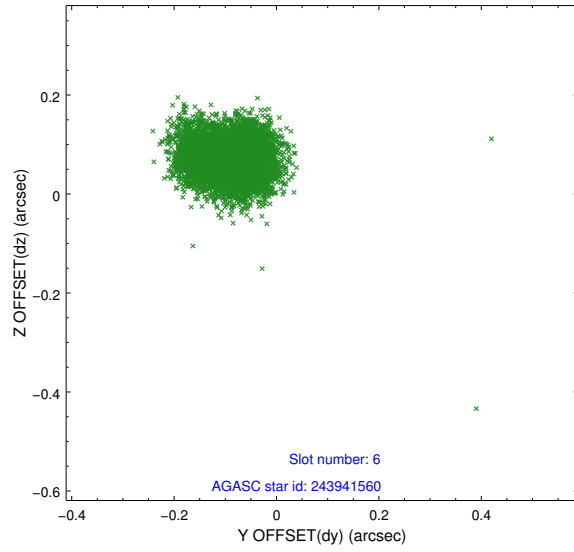
2.4.2 Slot 4



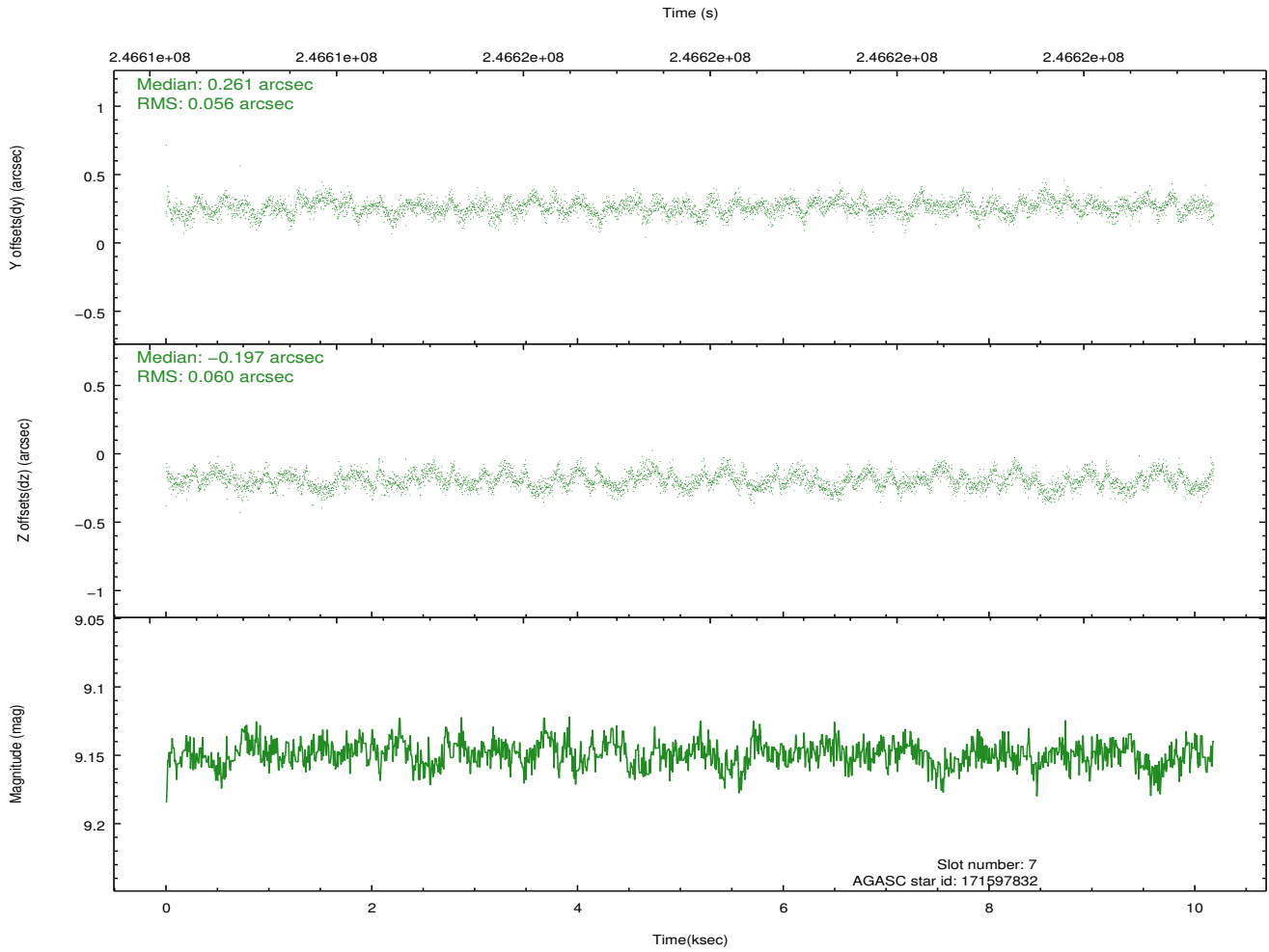
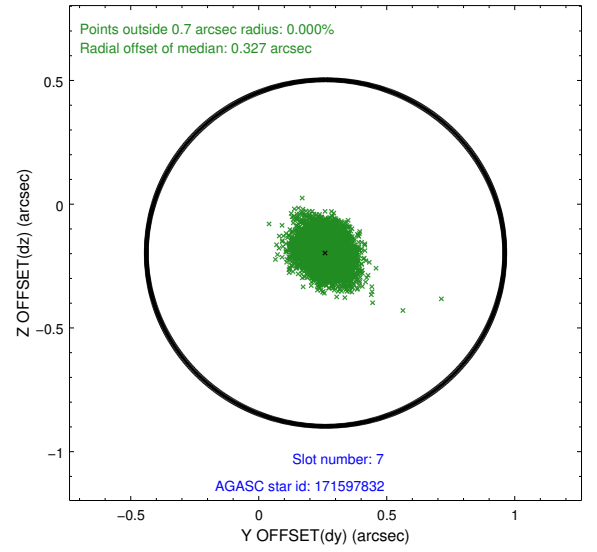
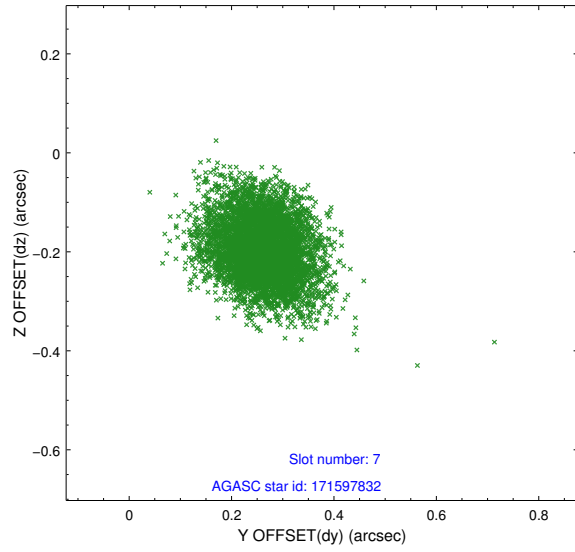
2.4.3 Slot 5



2.4.4 Slot 6

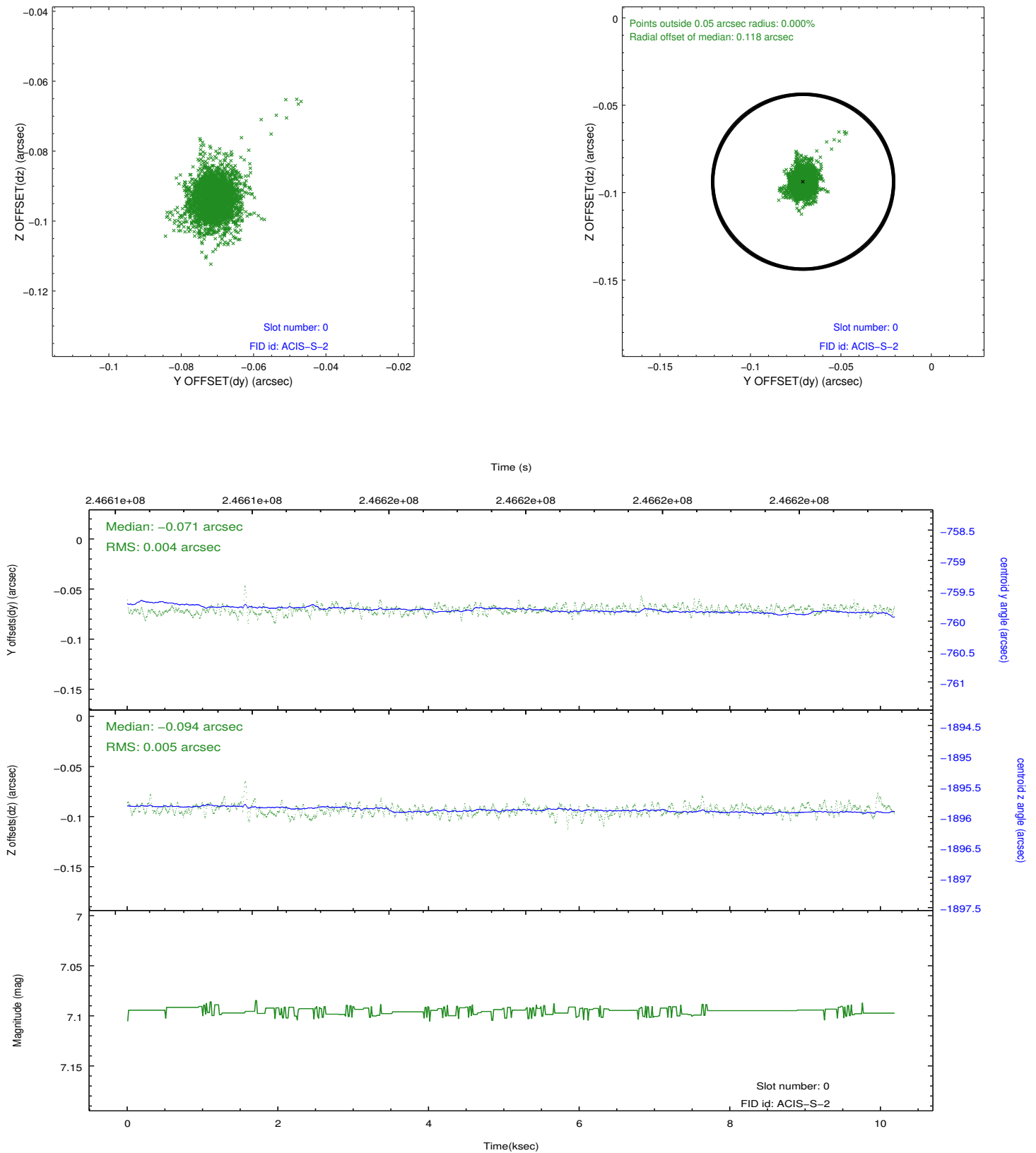


2.4.5 Slot 7

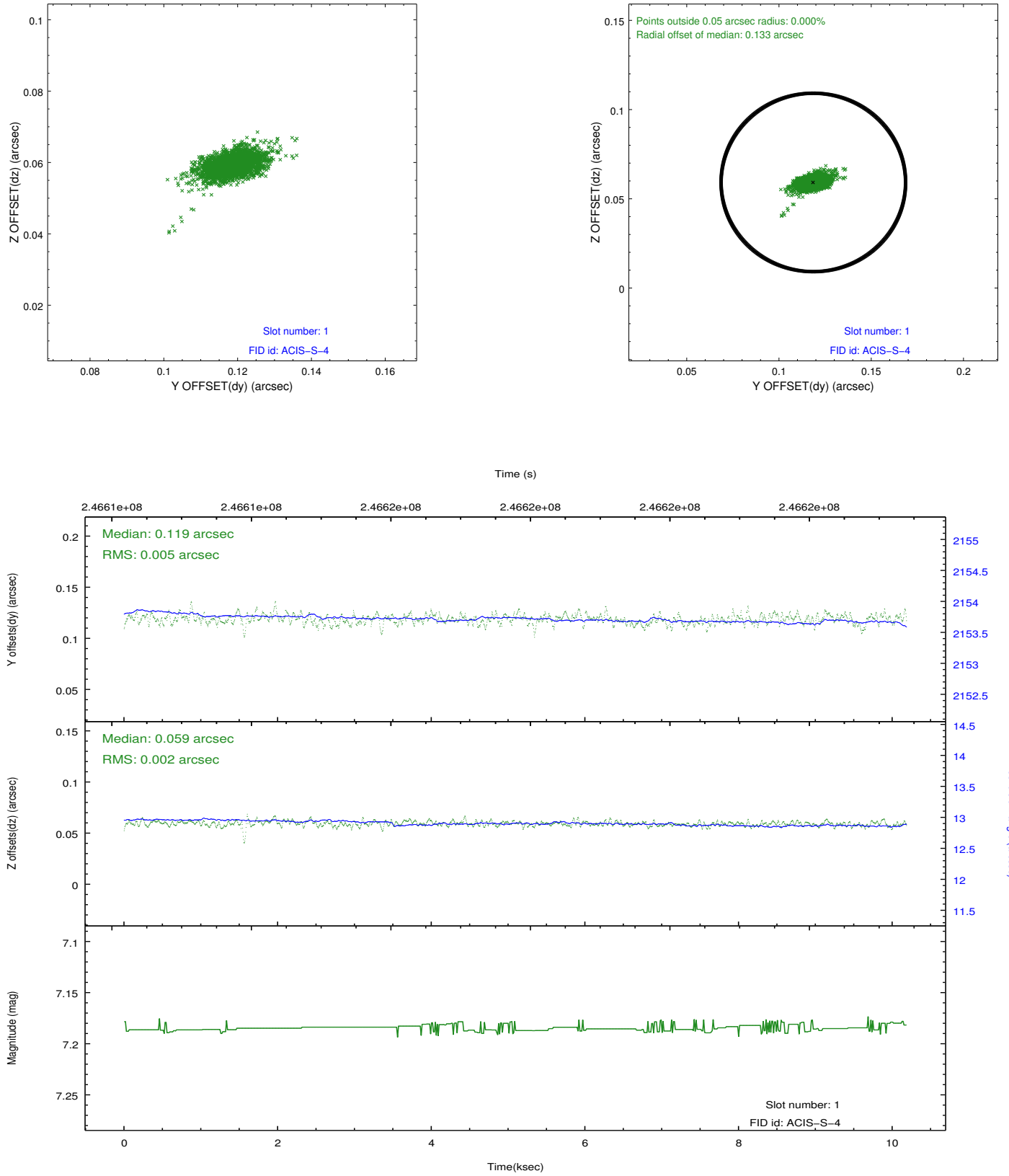


2.5 FID Slots

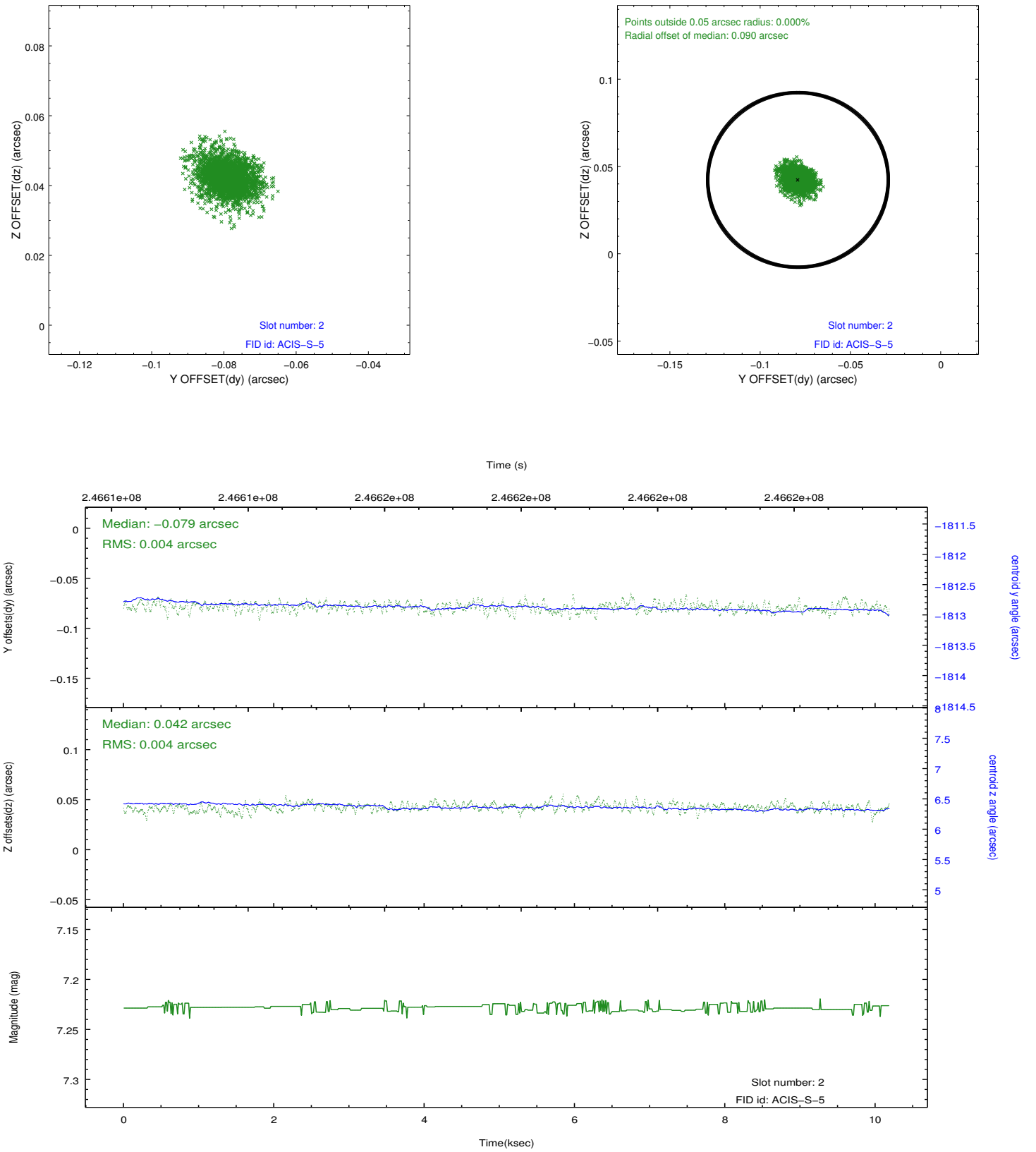
2.5.1 Slot 0



2.5.2 Slot 1



2.5.3 Slot 2

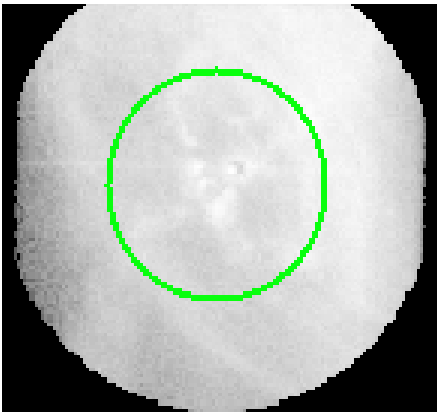


3 Gratings

3.1 HEG Arm



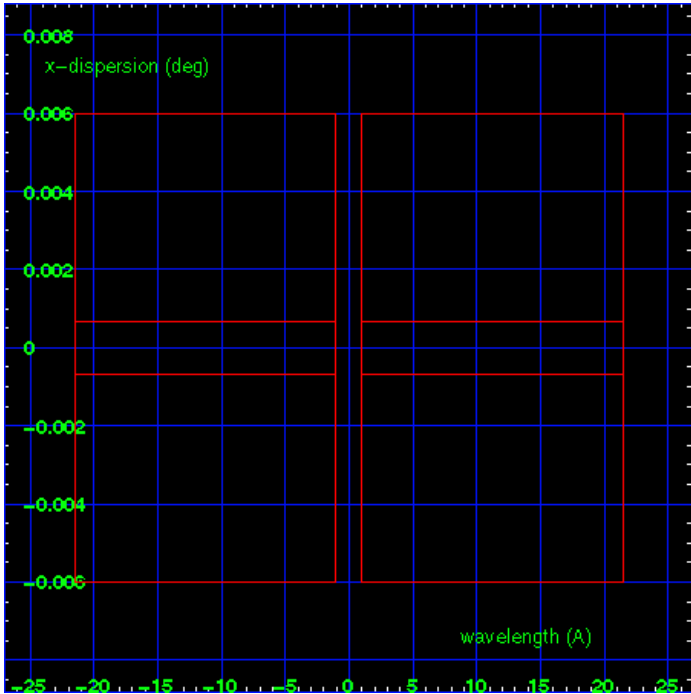
HEG Order Sort 123



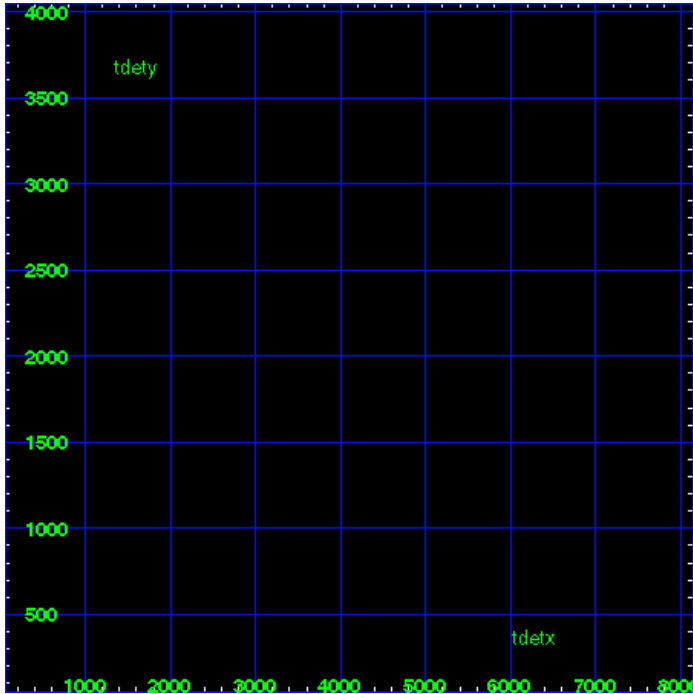
HEG Zero Order



HEG Order Sort ALL

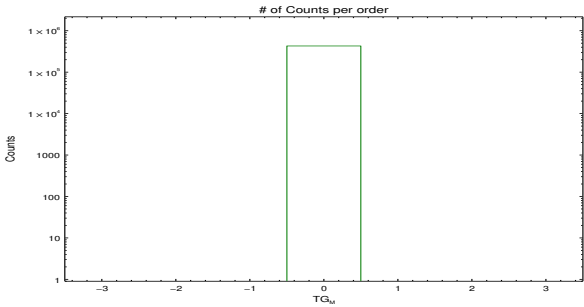


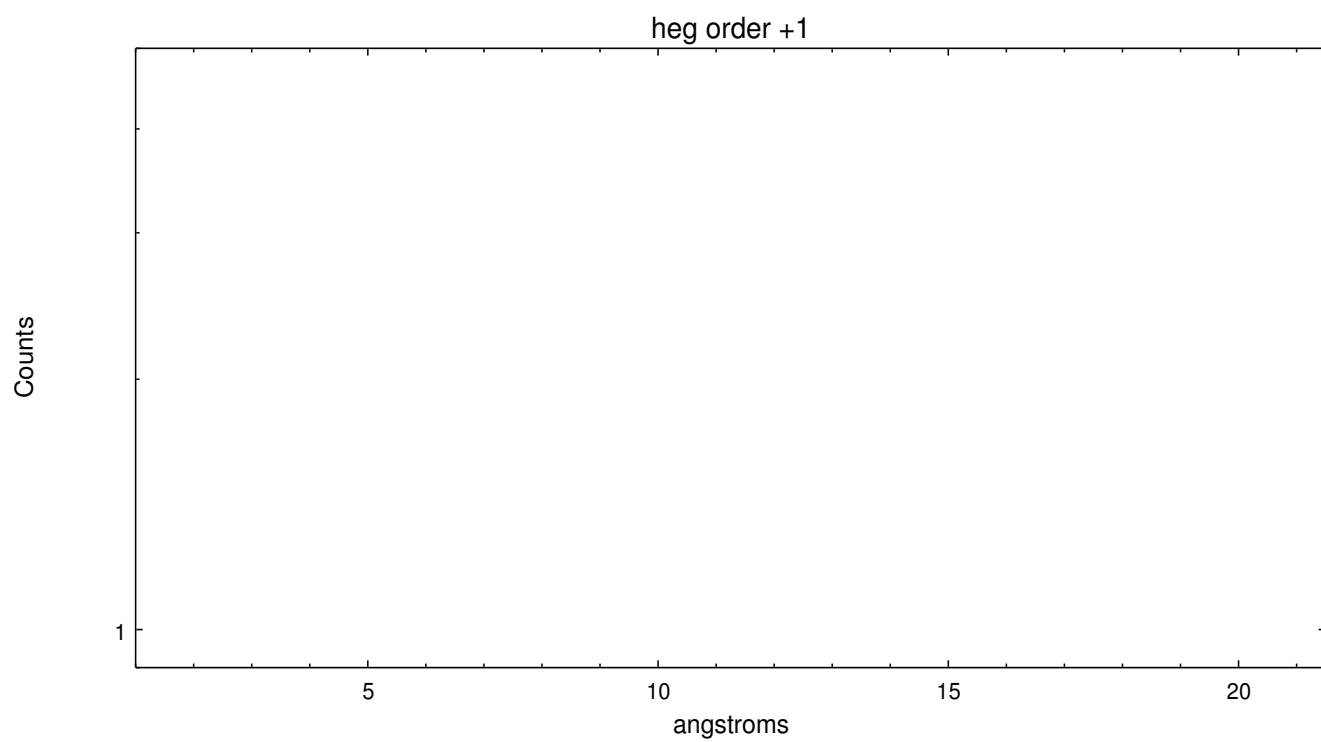
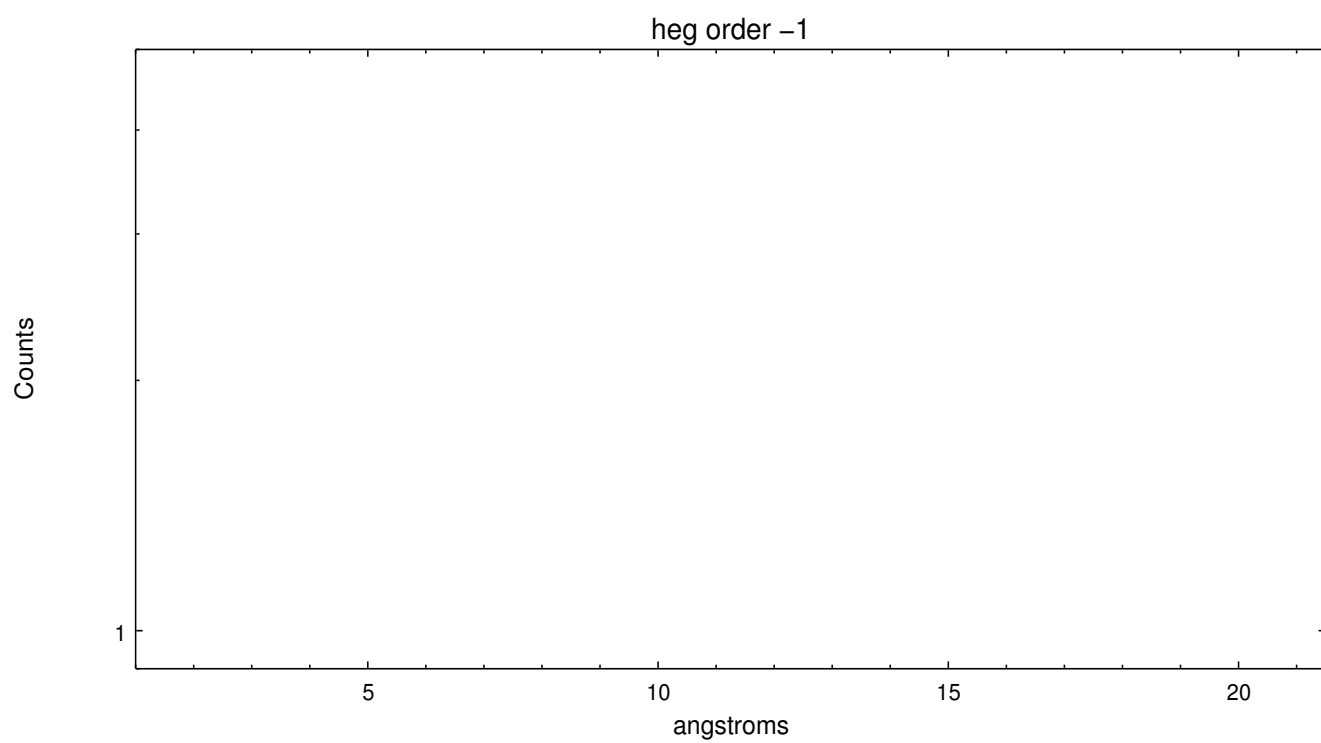
Spot Image HEG



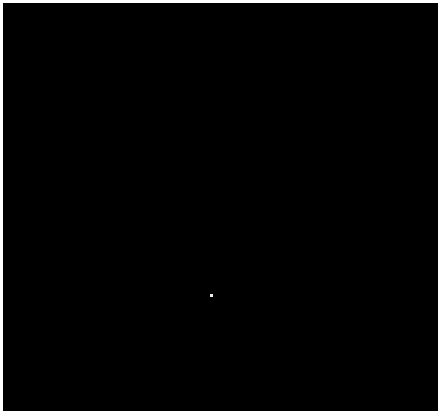
Full Detector HEG

	order -3	order -2	order -1	order 0	order 1	order 2	order 3
Events	0	0	0	433273	0	0	0

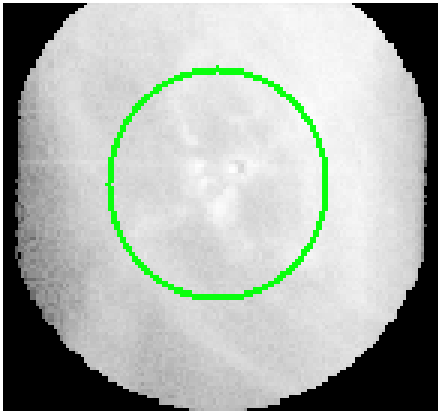




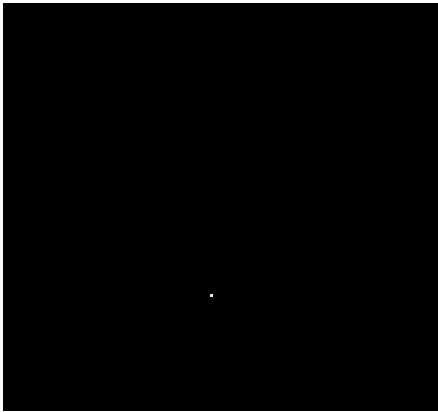
3.2 MEG Arm



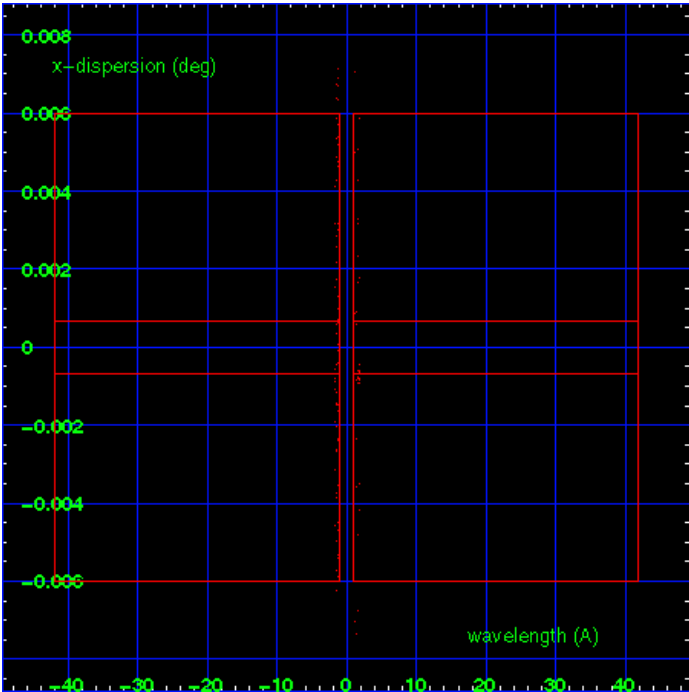
MEG Order Sort 123



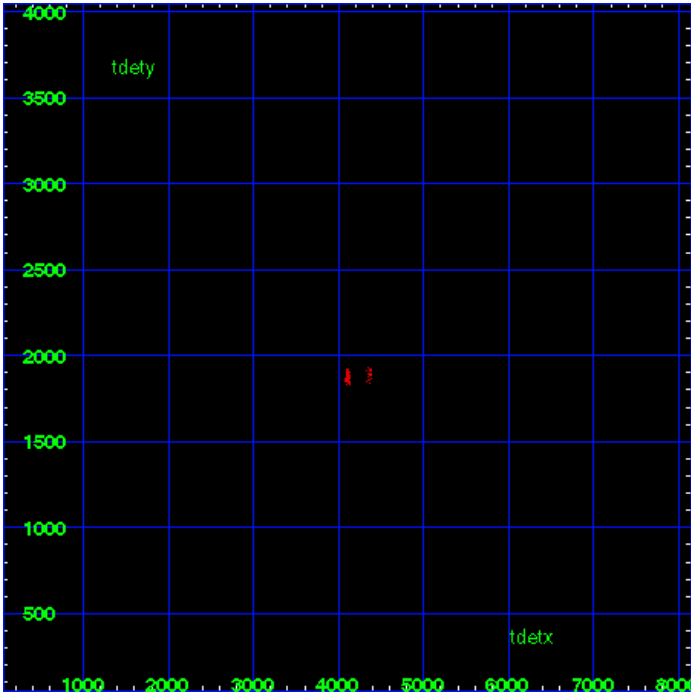
MEG Zero Order



MEG Order Sort ALL

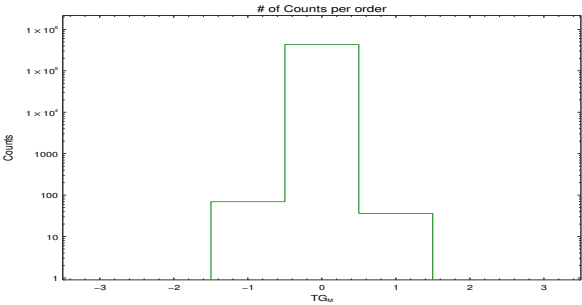


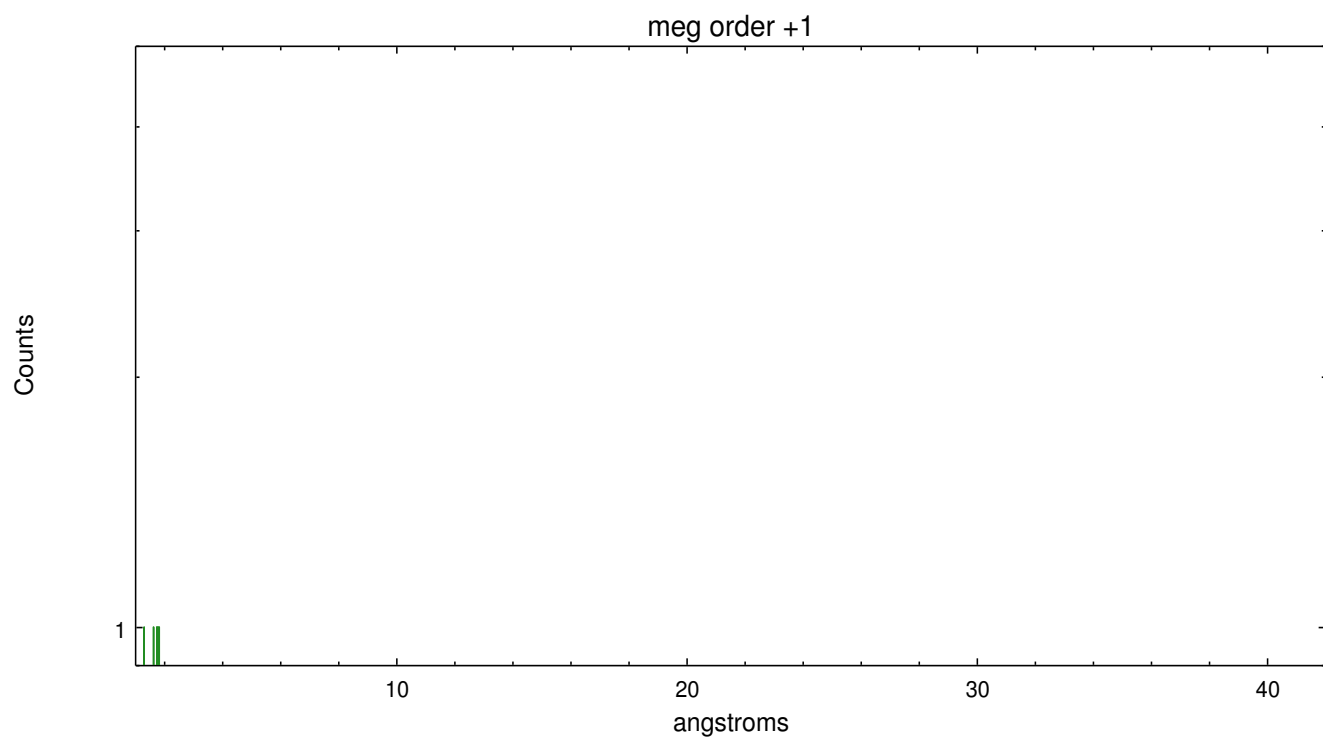
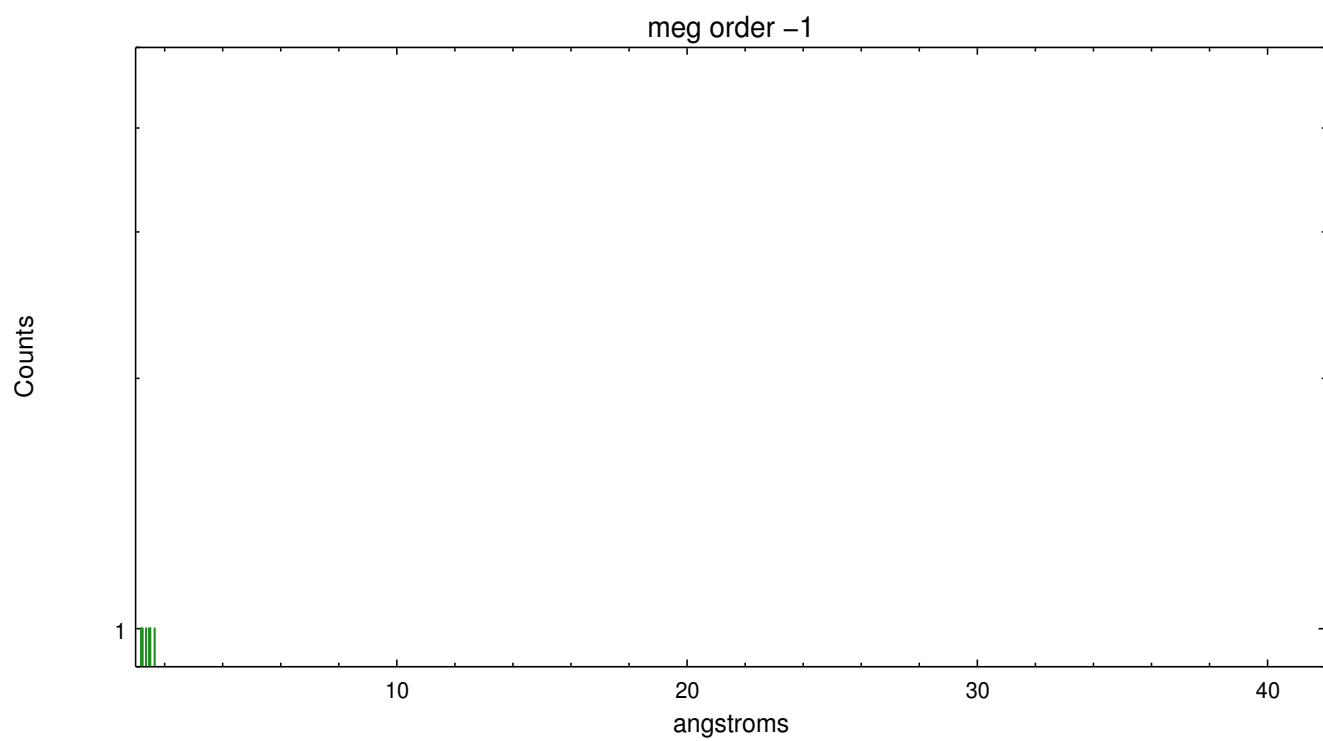
Spot Image MEG



Full Detector MEG

	order -3	order -2	order -1	order 0	order 1	order 2	order 3
Events	0	0	69	433273	36	0	0





A Summary

A.1 Status

V&V Scientist	Joy Nichols
V&V Date (YYYY-MM-DD)	2013.01.23
V&V Edition	1
V&V Disposition and Status	OK
V&V Charge Time	10.1838

A.2 Comments

HETG is inserted as a filter; there is very little useful gratings information in the observation. The zeroth order position used in the grating extraction is NOT at the position of the pulsar, but is between the pulsar and a bright emission knot to the SE. The zeroth order is in a region of low X-ray emission. If the dispersed grating spectrum is to be analyzed, it should be re-extracted using the exact position of the pulsar as the zeroth order position. The dispersed spectrum only contains data for the meg +1 order between 1-2 Å.