

V&V Reference Report

L2 ASCDS Version : 8.4.3

Observation 55327 - L2 Version 2
Chandra X-Ray Center

L2 Processing Date : Feb 13 2012

Contents

1	Front	2
2	OBI	3
2.1	OBI	3
2.1.1	Images	3
2.1.2	Bias	3
2.1.3	Parameters	4
2.1.4	Events	4
2.2	Compared Parameters	5
2.3	Star Slots	6
2.4	FID Slots	6
A	Summary	7
A.1	Status	7
A.2	Comments	7

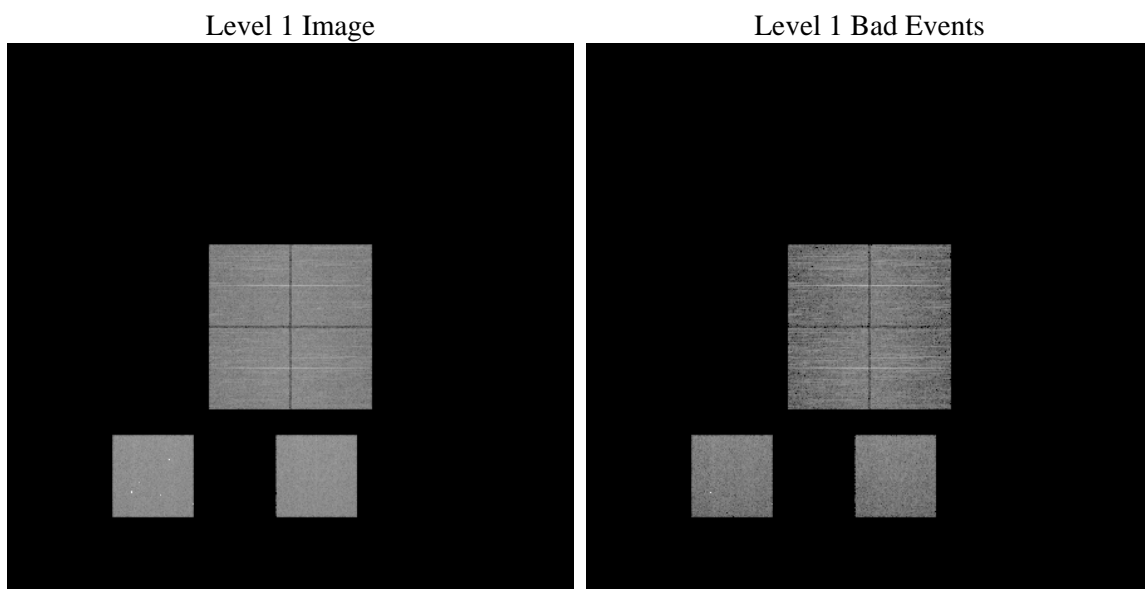
1 Front

seq_num	 	Sequence number
obs_id	55327	Observation id
title	ACIS-012357 diagnostics	Proposal title
observer	CHANDRA engineering request/realtime commanding	Principal investig
object	 	Source name
dtcycle	0	
cycle	P	events from which exps? Prim/Second/Both
ra_targ	0.0	Observer's specified target RA [deg]
dec_targ	0.0	Observer's specified target Dec [deg]
ra_nom	271.03791278909	Nominal RA [deg]
dec_nom	-49.984877050756	Nominal Dec [deg]
roll_nom	358.96670351624	Nominal Roll [deg]
revision	2	Processing version of data
ontime	8287.2941516638	Sum of GTIs [s]
livetime	8182.355443106	Livetime [s]
ontime0	8290.3490197659	Sum of GTIs [s]
ontime1	8290.3079797626	Sum of GTIs [s]
ontime2	8290.2669397593	Sum of GTIs [s]
ontime3	8287.2941516638	Sum of GTIs [s]
ontime5	8290.225899756	Sum of GTIs [s]
ontime7	8287.2941516638	Sum of GTIs [s]
l2events	332571	Number of level 2 events

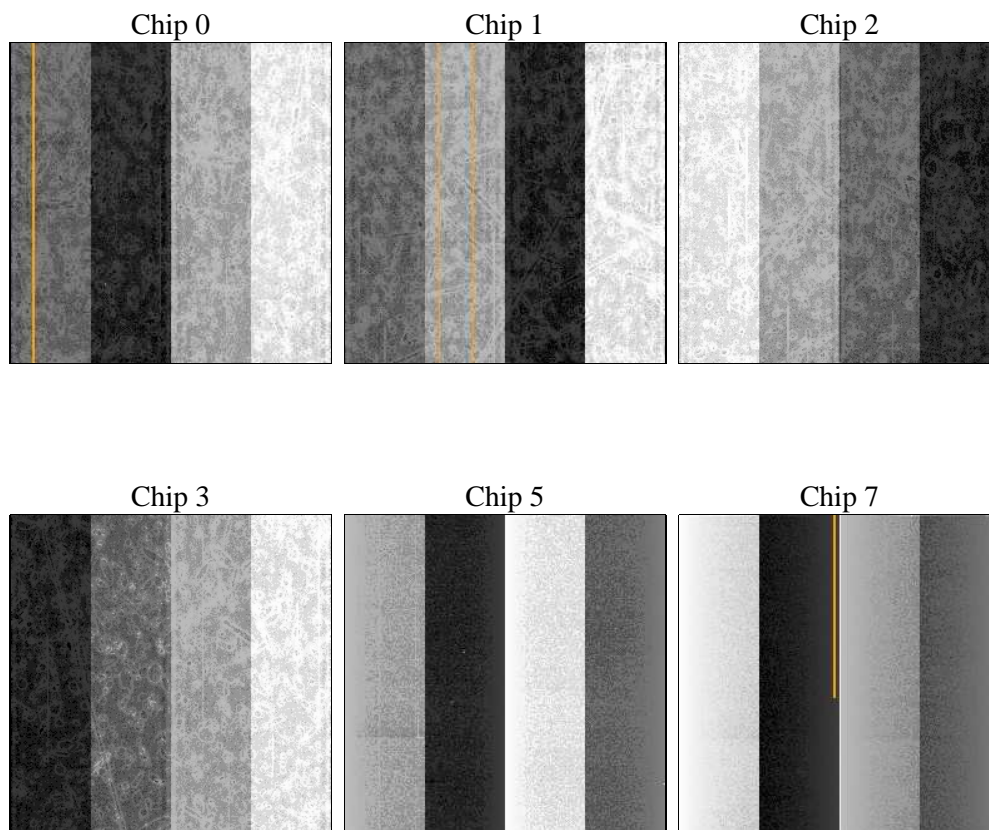
2 OBI

2.1 OBI

2.1.1 Images



2.1.2 Bias



2.1.3 Parameters

obi_num	0	Obi number	sched_exp_time	0.0	[s] Scheduled observation exposure time
ascdsver	8.4.3	Processing system revision	ontime	8287.2941516638	Sum of GTIs [s]
caldsver	4.4.7	 	ontime0	8290.3490197659	Sum of GTIs [s]
date	2012-02-13T12:34:57	Date and time of file creation	ontime1	8290.3079797626	Sum of GTIs [s]
revision	2	Processing version of data	ontime2	8290.2669397593	Sum of GTIs [s]
			ontime3	8287.2941516638	Sum of GTIs [s]
			ontime5	8290.225899756	Sum of GTIs [s]
			ontime7	8287.2941516638	Sum of GTIs [s]
			l1events	663257	Number of level 1 events

2.1.4 Events

	ccd 0	ccd 1	ccd 2	ccd 3	ccd 5	ccd 7		ccd 0	ccd 1	ccd 2	ccd 3	ccd 5	ccd 7
level 1 events	96474	98820	100421	101047	136335	130160	grade 0 events	25781	25542	26303	26730	11770	13138
rejected events	47650	49466	51392	51659	56514	54051		26%	25%	26%	26%	8%	10%
rejected %	49%	50%	51%	51%	41%	41%	grade 1 events	169	117	127	159	216	106
								0%	0%	0%	0%	0%	0%
							grade 2 events	8915	9561	8687	8649	28243	16437
								9%	9%	8%	8%	20%	12%
							grade 3 events	3356	3223	3328	3406	3361	6883
								3%	3%	3%	3%	2%	5%
							grade 4 events	3193	3317	3342	3266	3125	6880
								3%	3%	3%	3%	2%	5%
							grade 5 events	3076	3247	3076	3499	7432	8526
								3%	3%	3%	3%	5%	6%
							grade 6 events	7579	7711	7369	7337	33322	32771
								7%	7%	7%	7%	24%	25%
							grade 7 events	44405	46102	48189	48001	48866	45419
								46%	46%	47%	47%	35%	34%

2.2 Compared Parameters

Parameter	Planned	Actual	Parameter	Planned	Actual
Instrument	ACIS	ACIS	Obspar format version number	7	7
Detector	ACIS-012357	ACIS-012357	Obspar file type	PREDICTED	ACTUAL
Grating	NONE	NONE	Obspar update status	NONE	UPDATED
Data mode	FAINT	FAINT	Number of optional ACIS chips dropped	0	0
Observation mode	SECONDARY	SECONDARY	On-chip summing requested	N	N
[deg] Pointing RA	0	271.0379127890925	Subarray requested	NONE	NONE
[deg] Pointing Dec	0	-49.98487705075591	Alternating exposures requested	N	N
[deg] Pointing Roll	0.0	358.9667035162371	[s] Primary exposure time	3.2	3.2
[mm] SIM focus pos	-1.429586	-1.428180813131781			
[mm] SIM defocus	0.1037507710433287	0.1051558262725154			
[mm] SIM translation stage pos	250.455976	250.466033080201			
[mm] SIM translation stage offset	0	-0.01005468664627074			
[s] Observation start time (MET)	425208415.786708	425208414.76173			
Observation start date	2011-06-23T09:26:56	2011-06-23T09:26:54			
[s] Observation end time (MET)	425218594.037237	425218593.01226			
Observation end date	2011-06-23T12:16:34	2011-06-23T12:16:33			
Read mode	TIMED	TIMED			

2.3 Star Slots

2.4 FID Slots

A Summary

A.1 Status

V&V Scientist	Jen Lauer
V&V Date (YYYY-MM-DD)	2012.02.14
V&V Edition	1
V&V Disposition and Status	OK
V&V Charge Time	8.2872941516638

A.2 Comments