

V&V Reference Report

L2 ASCDS Version : 8.4.3

Observation 55147 - L2 Version 2
Chandra X-Ray Center

L2 Processing Date : Feb 24 2012

Contents

1	Front	2
2	OBI	3
2.1	OBI	3
2.1.1	Images	3
2.1.2	Bias	3
2.1.3	Parameters	4
2.1.4	Events	4
2.2	Compared Parameters	5
2.3	Star Slots	6
2.4	FID Slots	6
A	Summary	7
A.1	Status	7
A.2	Comments	7

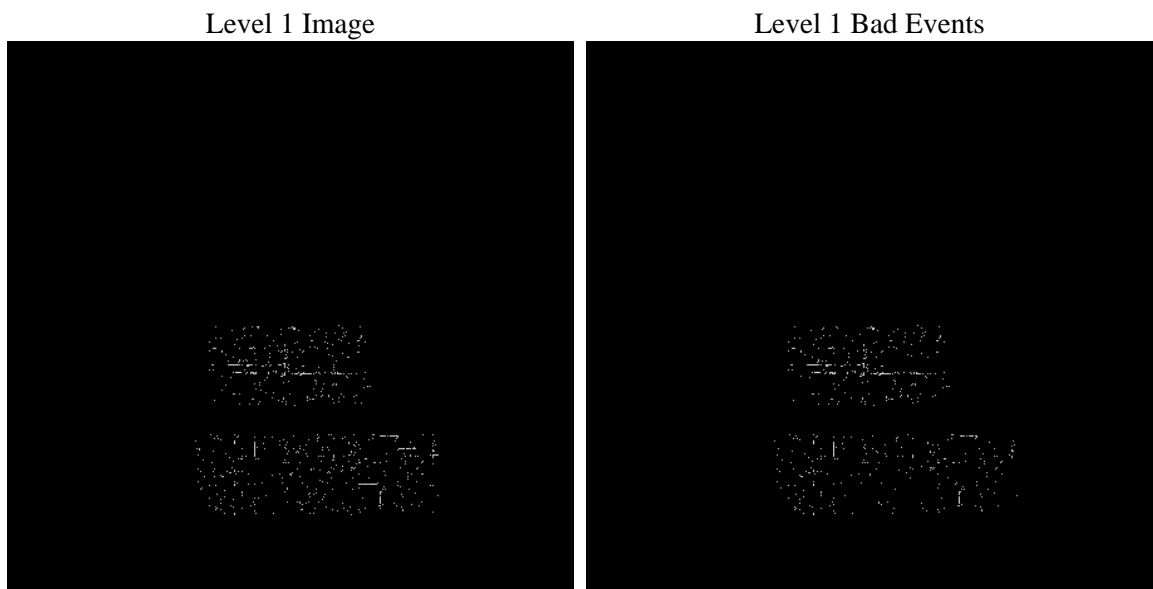
1 Front

seq_num	 	Sequence number
obs_id	55147	Observation id
title	ACIS-23678 diagnostics	Proposal title
observer	CHANDRA engineering request/realtime commanding	Principal investig
object	 	Source name
dtcycle	0	
cycle	P	events from which exps? Prim/Second/Both
ra_targ	0.0	Observer's specified target RA [deg]
dec_targ	0.0	Observer's specified target Dec [deg]
ra_nom	104.48786095076	Nominal RA [deg]
dec_nom	20.02431591686	Nominal Dec [deg]
roll_nom	84.607578986131	Nominal Roll [deg]
revision	2	Processing version of data
ontime	36.443935215473	Sum of GTIs [s]
livetime	35.967768372248	Livetime [s]
ontime2	36.279775202274	Sum of GTIs [s]
ontime3	36.361855208874	Sum of GTIs [s]
ontime6	36.402895212173	Sum of GTIs [s]
ontime7	36.443935215473	Sum of GTIs [s]
ontime8	36.320815205574	Sum of GTIs [s]
l2events	188	Number of level 2 events

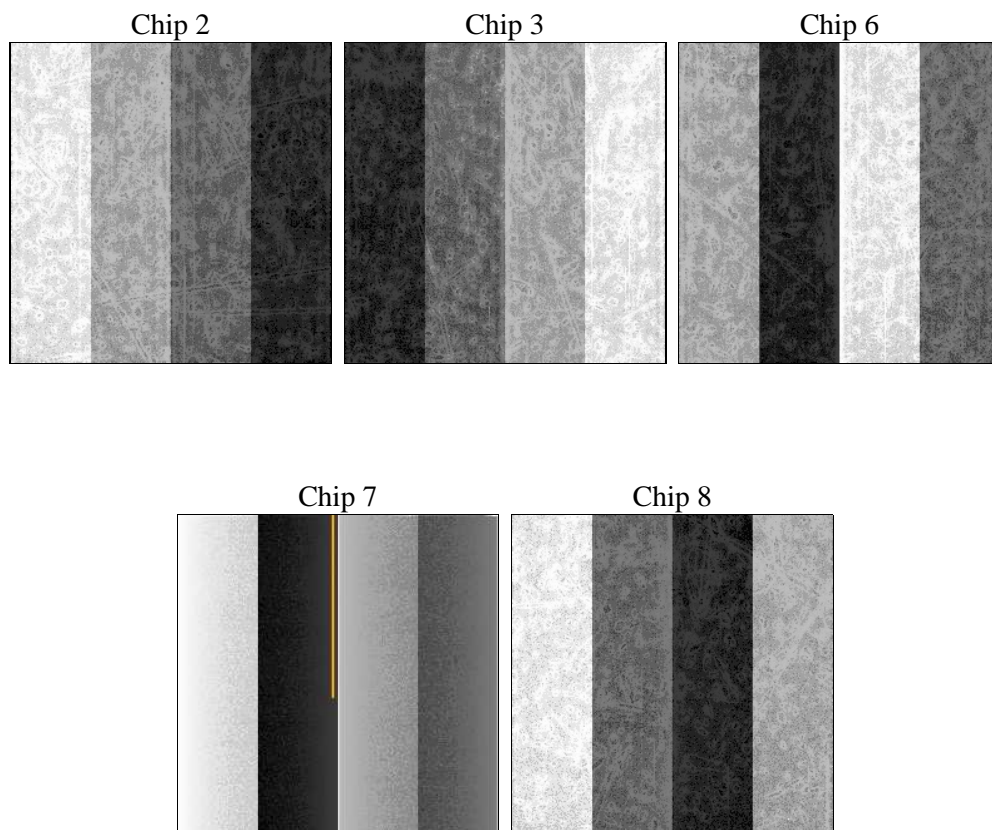
2 OBI

2.1 OBI

2.1.1 Images



2.1.2 Bias



2.1.3 Parameters

obi_num	0	Obi number			
ascdsver	8.4.3	Processing system revision	sched_exp_time	0.0	[s] Scheduled observation exposure time
caldbver	4.4.8	 	ontime	36.443935215473	Sum of GTIs [s]
date	2012-02-24T04:59:27	Date and time of file creation	ontime2	36.279775202274	Sum of GTIs [s]
			ontime3	36.361855208874	Sum of GTIs [s]
revision	2	Processing version of data	ontime6	36.402895212173	Sum of GTIs [s]
			ontime7	36.443935215473	Sum of GTIs [s]
			ontime8	36.320815205574	Sum of GTIs [s]
			l1events	946	Number of level 1 events

2.1.4 Events

	ccd 2	ccd 3	ccd 6	ccd 7	ccd 8
level 1 events	237	185	148	143	233
rejected events	216	166	135	72	132
rejected %	91%	89%	91%	50%	56%

	ccd 2	ccd 3	ccd 6	ccd 7	ccd 8
grade 0 events	7	7	6	2	35
	2%	3%	4%	1%	15%
grade 1 events	0	0	0	0	0
	0%	0%	0%	0%	0%
grade 2 events	5	5	2	19	12
	2%	2%	1%	13%	5%
grade 3 events	3	2	2	3	21
	1%	1%	1%	2%	9%
grade 4 events	1	1	2	5	20
	0%	0%	1%	3%	8%
grade 5 events	7	5	3	9	9
	2%	2%	2%	6%	3%
grade 6 events	5	4	1	42	13
	2%	2%	0%	29%	5%
grade 7 events	209	161	132	63	123
	88%	87%	89%	44%	52%

2.2 Compared Parameters

Parameter	Planned	Actual	Parameter	Planned	Actual
Instrument	ACIS	ACIS	Obspar format version number	7	7
Detector	ACIS-23678	ACIS-23678	Obspar file type	PREDICTED	ACTUAL
Grating	NONE	NONE	Obspar update status	OVERRIDE	OVERRIDE
Data mode	VFAINT	VFAINT	Number of optional ACIS chips dropped	0	0
Observation mode	SECONDARY	SECONDARY	On-chip summing requested	N	N
[deg] Pointing RA	0	104.4878609507637	Subarray requested	NONE	NONE
[deg] Pointing Dec	0	20.02431591685981	Alternating exposures requested	N	N
[deg] Pointing Roll	0.0	84.60757898613137	[s] Primary exposure time	3.1	3.1
[mm] SIM focus pos	-0.6828225247311905	-0.6828225247311905			
[mm] SIM defocus	0.8505140384245529	0.8505140384245529			
[mm] SIM translation stage pos	-190.1400660498719	-190.1400660498719			
[mm] SIM translation stage offset	440.5960418688666	440.5960418688666			
[s] Observation start time (MET)	433975950.173415	433975950.173415			
Observation start date	2011-10-02T20:52:30	2011-10-02T20:52:30			
[s] Observation end time (MET)	433979731.91111	433979731.91111			
Observation end date	2011-10-02T21:55:31	2011-10-02T21:55:31			
Read mode	TIMED	TIMED			

2.3 Star Slots

2.4 FID Slots

A Summary

A.1 Status

V&V Scientist	Jen Lauer
V&V Date (YYYY-MM-DD)	2012.02.28
V&V Edition	1
V&V Disposition and Status	OK
V&V Charge Time	0.036443935215473

A.2 Comments