

V&V Reference Report

L2 ASCDS Version : 8.5

Observation 5357 - L2 Version 3
Chandra X-Ray Center

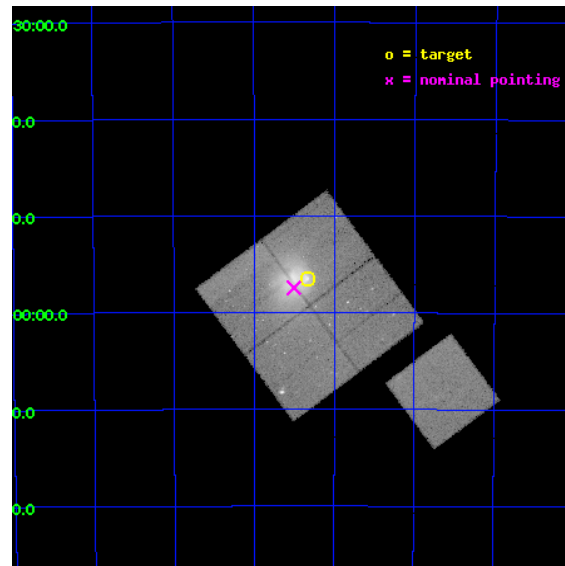
L2 Processing Date : Dec 8 2012

Contents

1	Front	2
2	OBI	3
2.1	OBI	3
2.1.1	Images	3
2.1.2	Bias	3
2.1.3	Parameters	4
2.1.4	Events	4
2.2	Compared Parameters	5
2.3	Aspect	6
2.4	Star Slots	9
2.4.1	Slot 3	9
2.4.2	Slot 4	10
2.4.3	Slot 5	11
2.4.4	Slot 6	12
2.4.5	Slot 7	13
2.5	FID Slots	14
2.5.1	Slot 0	14
2.5.2	Slot 1	15
2.5.3	Slot 2	16
A	Summary	17
A.1	Status	17
A.2	Comments	17

1 Front

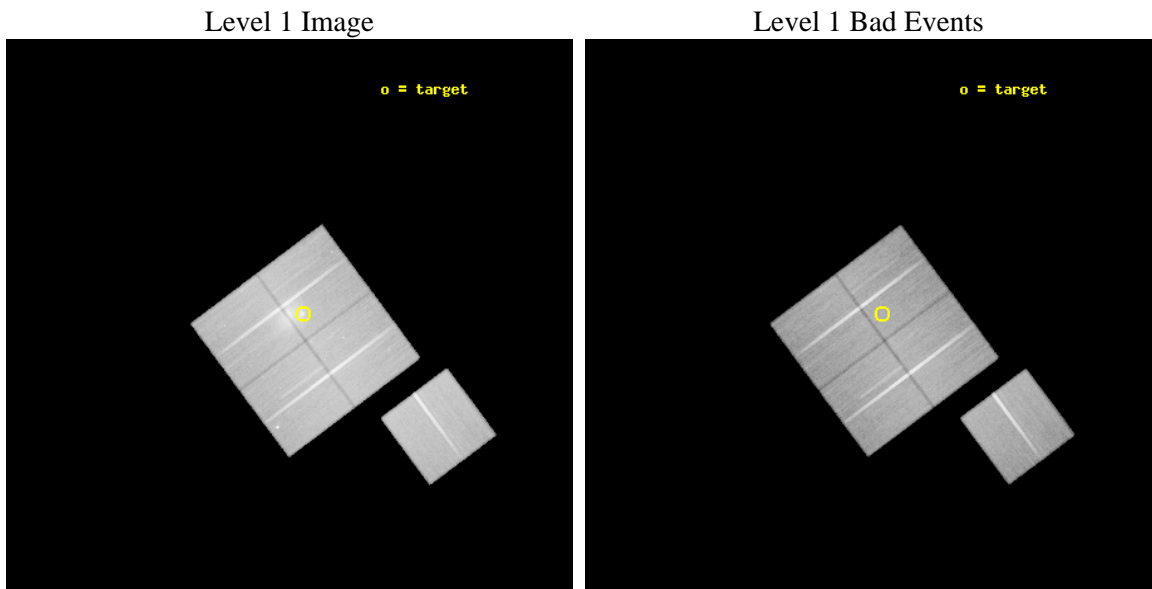
seq_num	800429	Sequence number
obs_id	5357	Observation id
title	THE MOST INTERESTING CLUSTER IN THE UNIVERSE	Proposal title
observer	Dr Maxim Markevitch	Principal investigator
object	1E0657-56	Source name
dtcycle	0	
cycle	P	events from which exps? Prim/Second/Both
ra_targ	104.5827	Observer's specified target RA [deg]
dec_targ	-55.9415	Observer's specified target Dec [deg]
ra_nom	104.62605718095	Nominal RA [deg]
dec_nom	-55.957539433628	Nominal Dec [deg]
roll_nom	143.24460629048	Nominal Roll [deg]
revision	3	Processing version of data
ontime	80103.835885257	Sum of GTIs [s]
livetime	79057.22029783	Livetime [s]
ontime0	80103.835885257	Sum of GTIs [s]
ontime1	80106.976945192	Sum of GTIs [s]
ontime2	80110.117905468	Sum of GTIs [s]
ontime3	80100.6949251	Sum of GTIs [s]
ontime6	80110.117855638	Sum of GTIs [s]
l2events	319859	Number of level 2 events



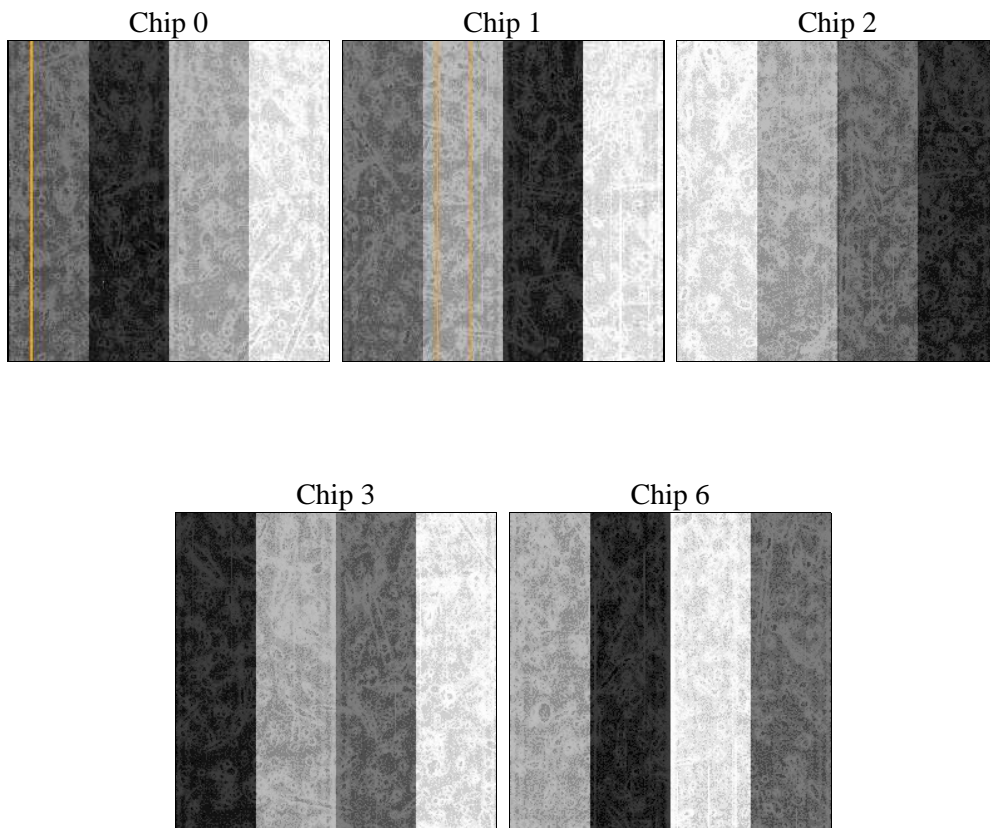
2 OBI

2.1 OBI

2.1.1 Images



2.1.2 Bias



2.1.3 Parameters

obi_num	0	Obi number	sched_exp_time	80000.000000	[s] Scheduled observation exposure time
ascdsver	8.5	Processing system revision	ontime	80103.835885257	Sum of GTIs [s]
caldbver	4.5.4	 	ontime0	80103.835885257	Sum of GTIs [s]
date	2012-12-07T18:48:41	Date and time of file creation	ontime1	80106.976945192	Sum of GTIs [s]
revision	3	Processing version of data	ontime2	80110.117905468	Sum of GTIs [s]
			ontime3	80100.6949251	Sum of GTIs [s]
			ontime6	80110.117855638	Sum of GTIs [s]
			l1events	2660575	Number of level 1 events

2.1.4 Events

	ccd 0	ccd 1	ccd 2	ccd 3	ccd 6
level 1 events	543461	526652	546698	525158	518606
rejected events	429113	425289	492806	472966	466537
rejected %	78%	80%	90%	90%	89%

	ccd 0	ccd 1	ccd 2	ccd 3	ccd 6
grade 0 events	69739	56833	21144	20826	18742
	12%	10%	3%	3%	3%
grade 1 events	529	421	321	280	230
	0%	0%	0%	0%	0%
grade 2 events	18530	17187	12336	10931	11301
	3%	3%	2%	2%	2%
grade 3 events	7679	7767	5540	5610	5851
	1%	1%	1%	1%	1%
grade 4 events	7472	7459	5893	5607	5692
	1%	1%	1%	1%	1%
grade 5 events	17500	19123	16485	20053	19614
	3%	3%	3%	3%	3%
grade 6 events	11511	12586	9357	9566	10824
	2%	2%	1%	1%	2%
grade 7 events	410501	405276	475622	452285	446352
	75%	76%	86%	86%	86%

2.2 Compared Parameters

Parameter	Planned	Actual	Parameter	Planned	Actual
Instrument	ACIS	ACIS	Obspar format version number	7	7
Detector	ACIS-01236	ACIS-01236	Obspar file type	PREDICTED	ACTUAL
Grating	NONE	NONE	Obspar update status	NONE	UPDATED
Data mode	VFAINT	VFAINT	Number of optional ACIS chips dropped	0	0
Observation mode	POINTING	POINTING	On-chip summing requested	N	N
[deg] Pointing RA	104.674685	104.6260571809491	Subarray requested	NONE	NONE
[deg] Pointing Dec	-55.960653	-55.95753943362822	Alternating exposures requested	N	N
[deg] Pointing Roll	143.076217	143.2446062904827	[s] Primary exposure time	0.000000	3.1
[mm] SIM focus pos	-0.782348	-0.7809083437167272			
[mm] SIM defocus	0	0.001439871863259334			
[mm] SIM translation stage pos	-242.592463	-242.5987405016197			
[mm] SIM translation stage offset	9	9.006287498690028			
[s] Observation start time (MET)	208871388.184000	208870146.63465			
Observation start date	2004-08-14T11:48:44	2004-08-14T11:29:06			
[s] Observation end time (MET)	208951388.184000	208952312.1758			
Observation end date	2004-08-15T10:02:04	2004-08-15T10:18:32			
Read mode	TIMED	TIMED			

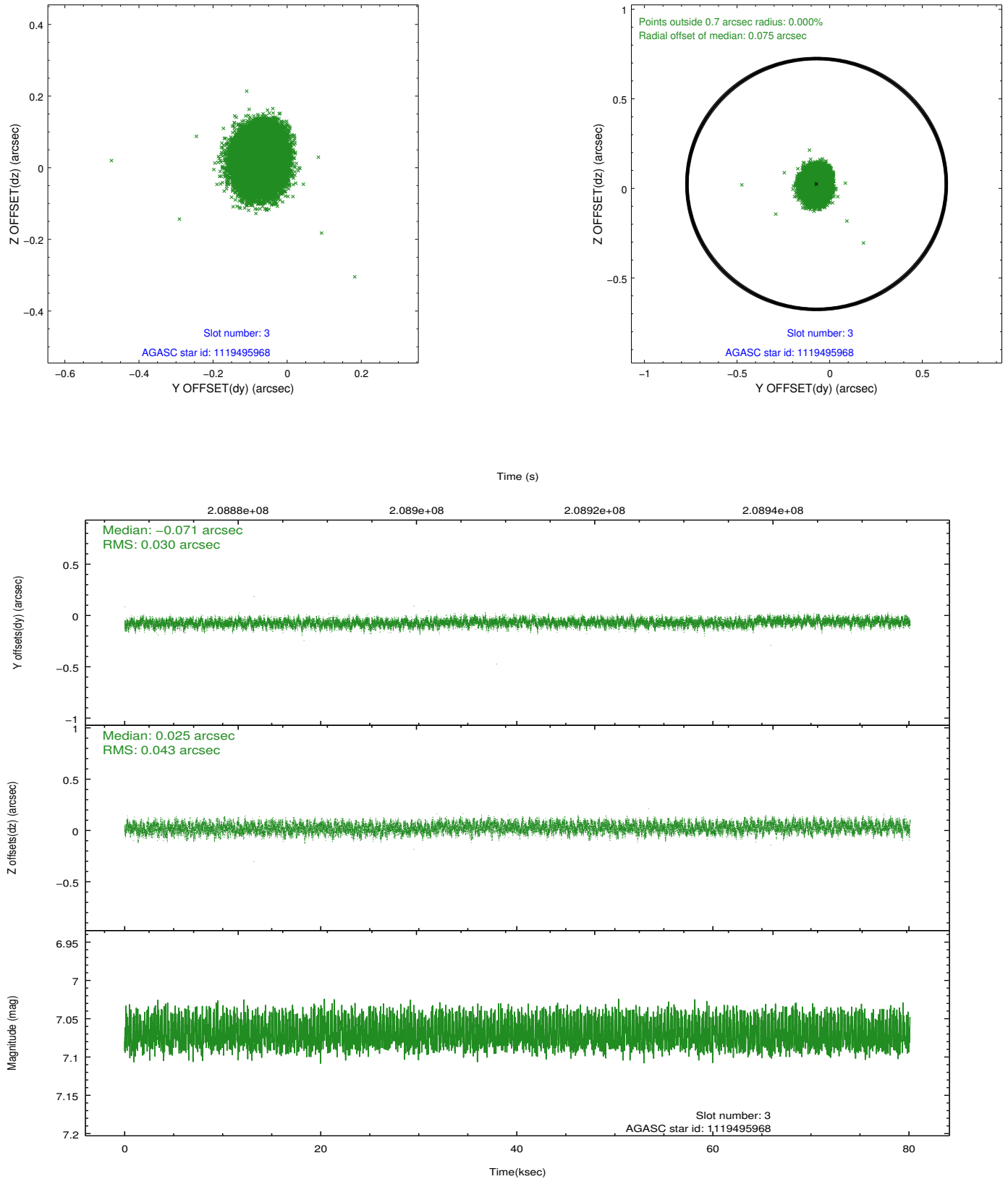
2.3 Aspect

Slot Statistics

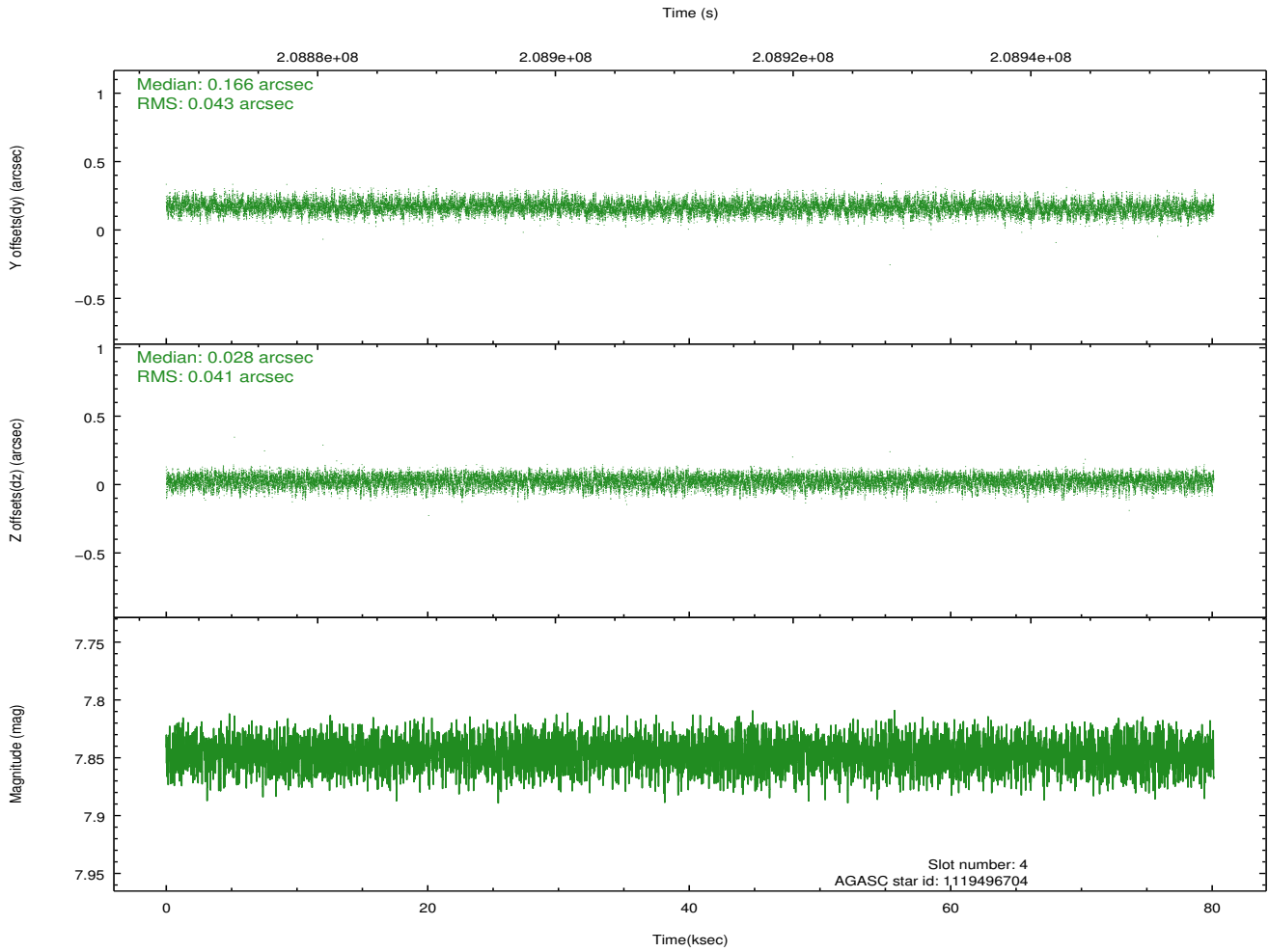
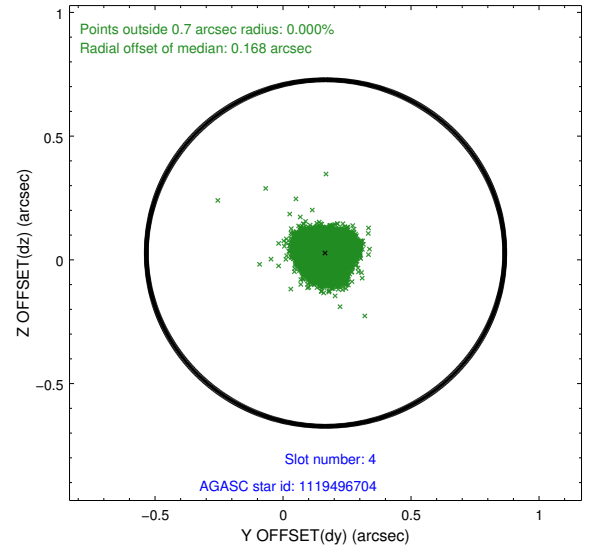
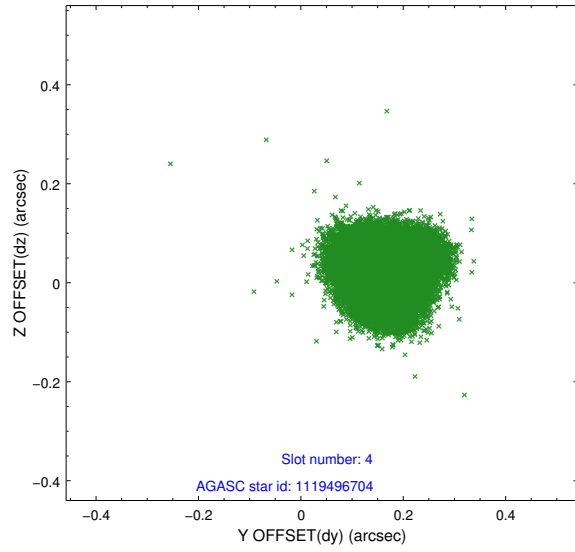
slot	status	id	mag	n_pts	med_dy	med_dz	dr1	dr2	ra	dec	mean_y	mean_z
0	FID	ACIS-I-2	7.17	19539	-0.013	-0.038	0.038	0.071	0.000000	0.000000	-759.91	-655.85
1	FID	ACIS-I-4	7.23	19541	0.125	0.023	0.031	0.050	0.000000	0.000000	2154.35	1250.52
2	FID	ACIS-I-5	7.23	19542	-0.212	0.075	0.023	0.038	0.000000	0.000000	-1814.52	1249.45
3	GUIDE	1119495968	7.07	39084	-0.071	0.025	0.056	0.089	105.873528	-55.948238	-1917.42	-1470.85
4	GUIDE	1119496704	7.85	39076	0.166	0.028	0.064	0.102	104.368364	-55.667750	1130.05	-467.95
5	GUIDE	1119499792	7.25	39085	-0.105	-0.048	0.063	0.098	104.350048	-56.101305	216.08	797.67
6	GUIDE	1120026344	6.71	39083	0.005	-0.081	0.063	0.103	104.651539	-56.394853	-902.28	1277.56
7	GUIDE	1119500592	8.69	39067	-0.000	0.083	0.092	0.147	105.814889	-55.642715	-1175.25	-2291.16

2.4 Star Slots

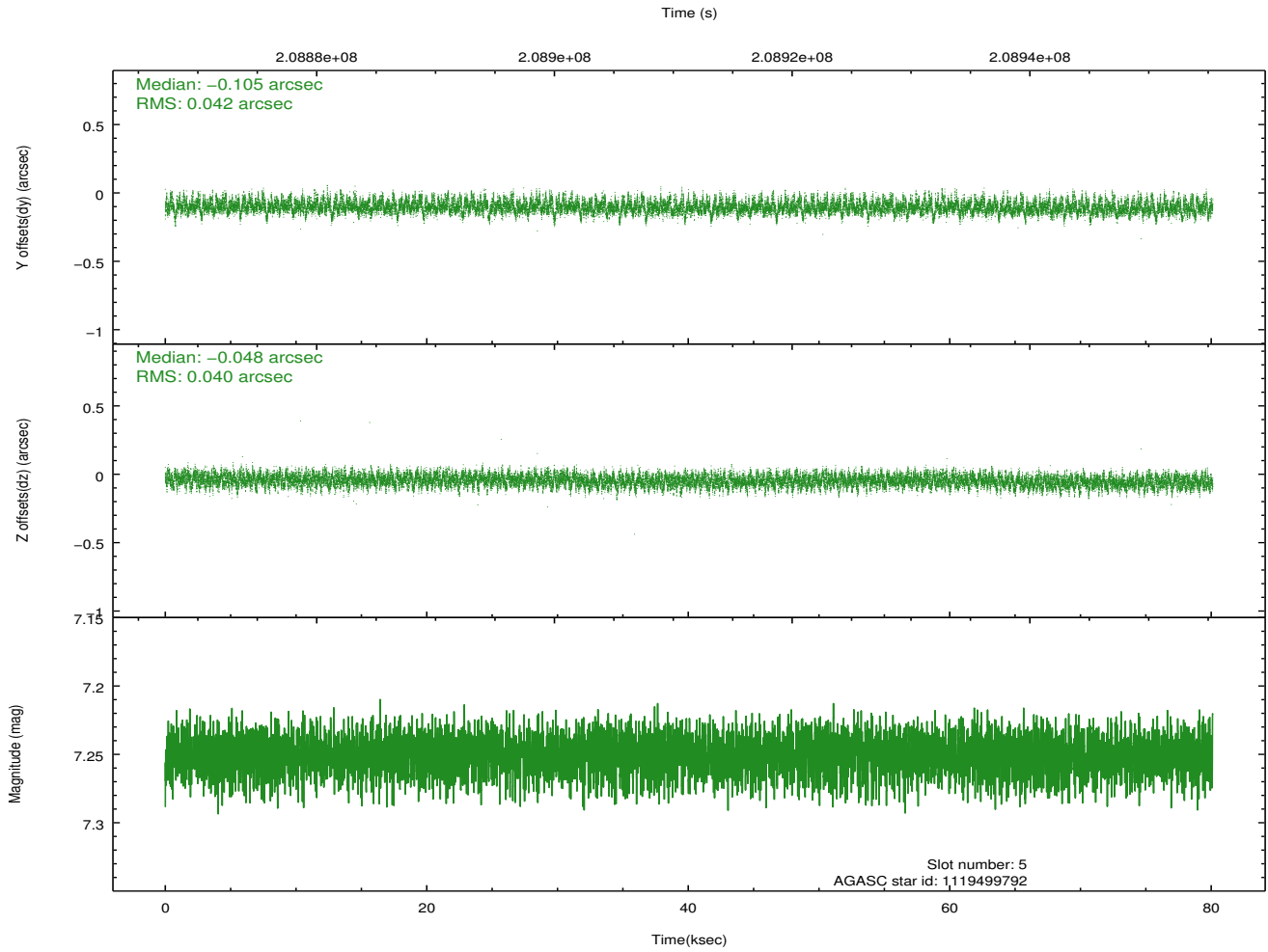
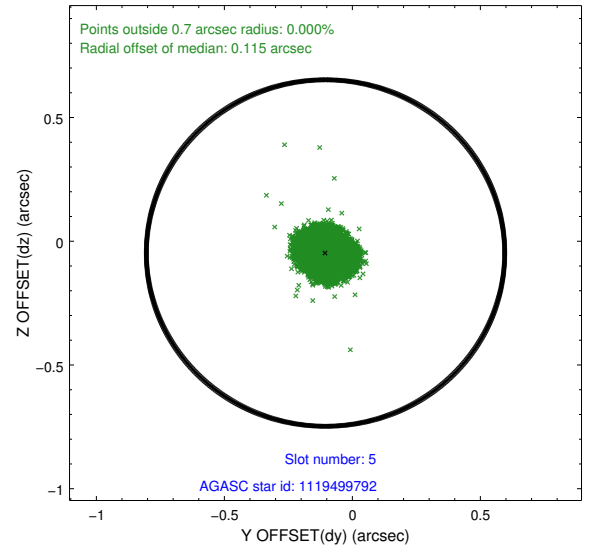
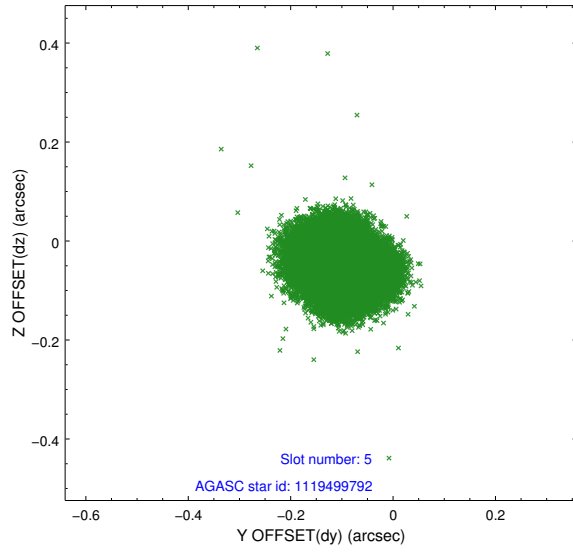
2.4.1 Slot 3



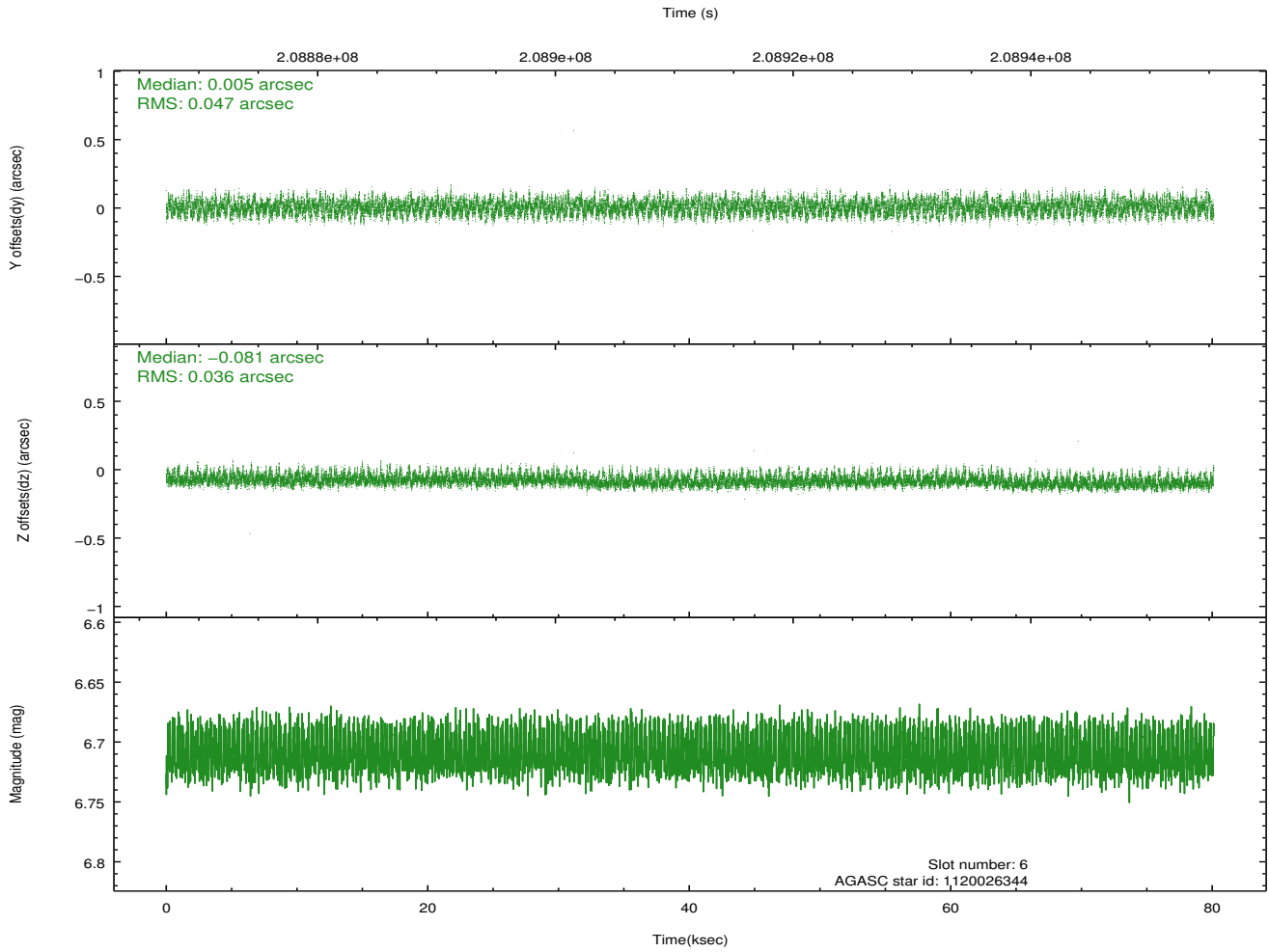
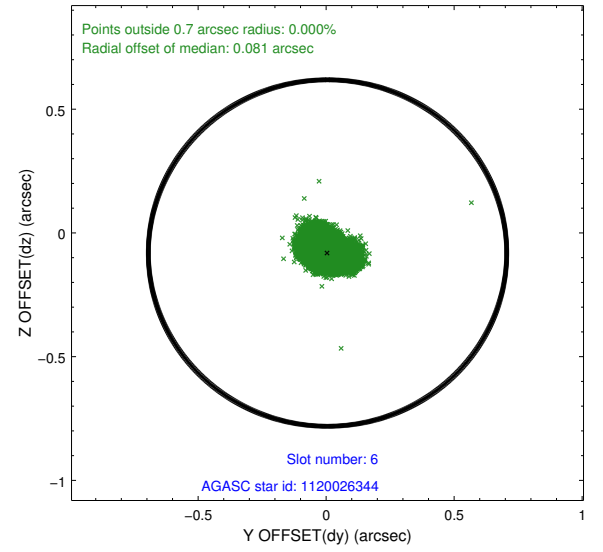
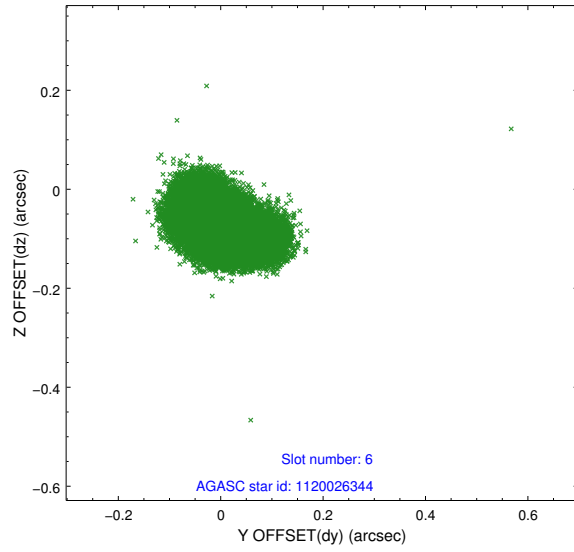
2.4.2 Slot 4



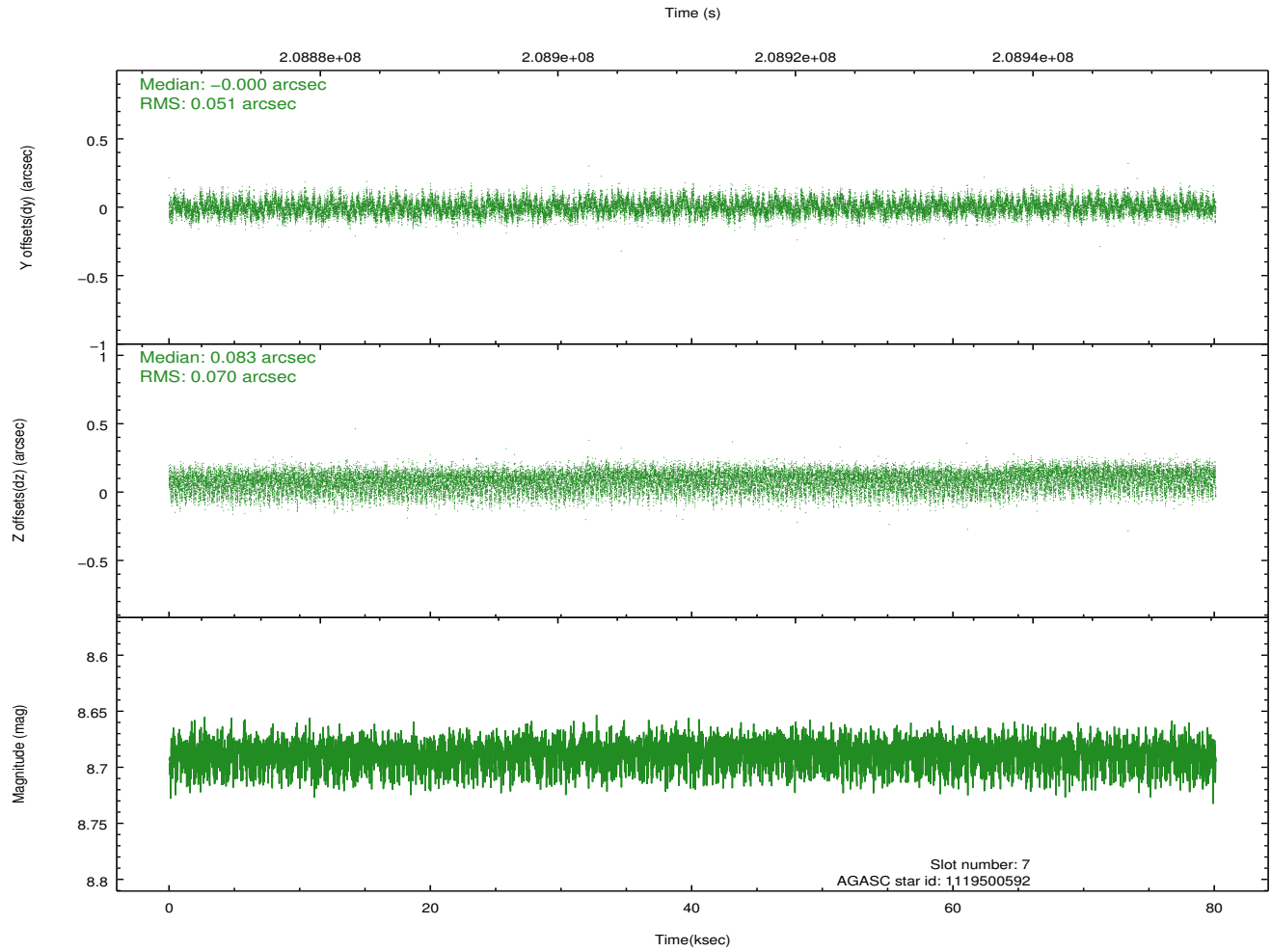
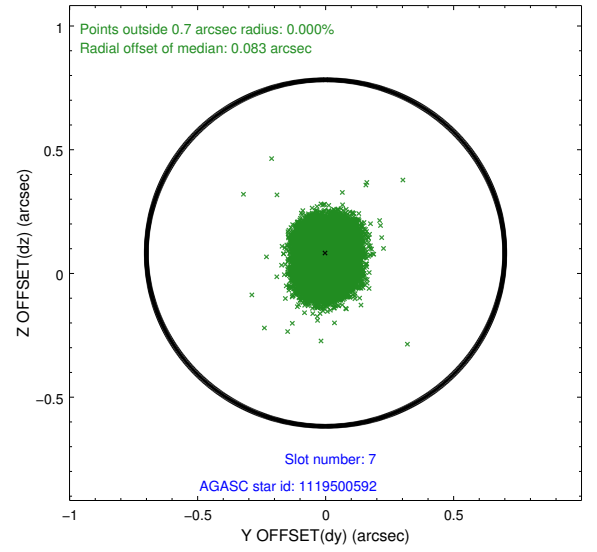
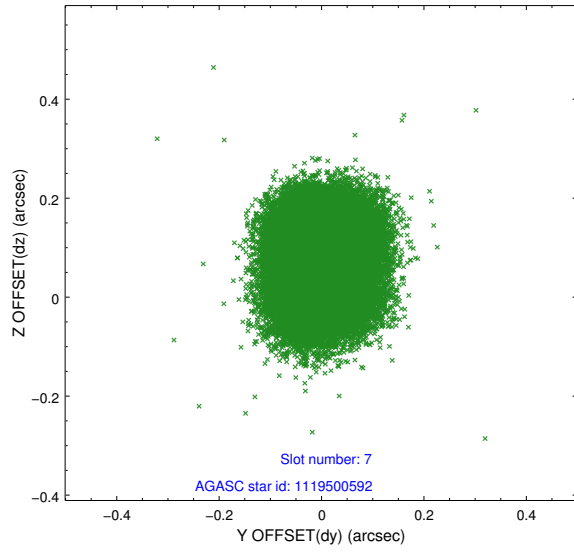
2.4.3 Slot 5



2.4.4 Slot 6

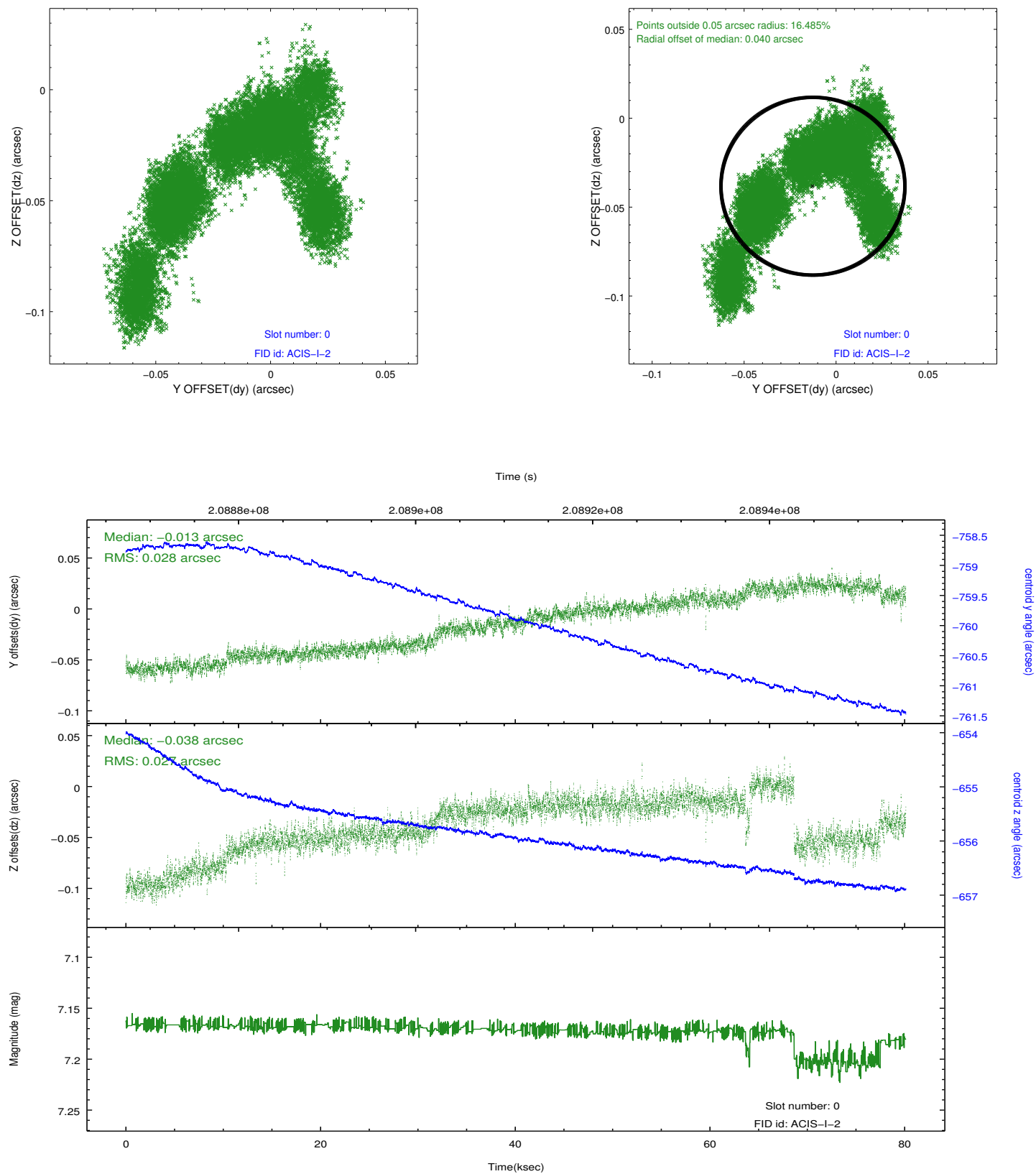


2.4.5 Slot 7

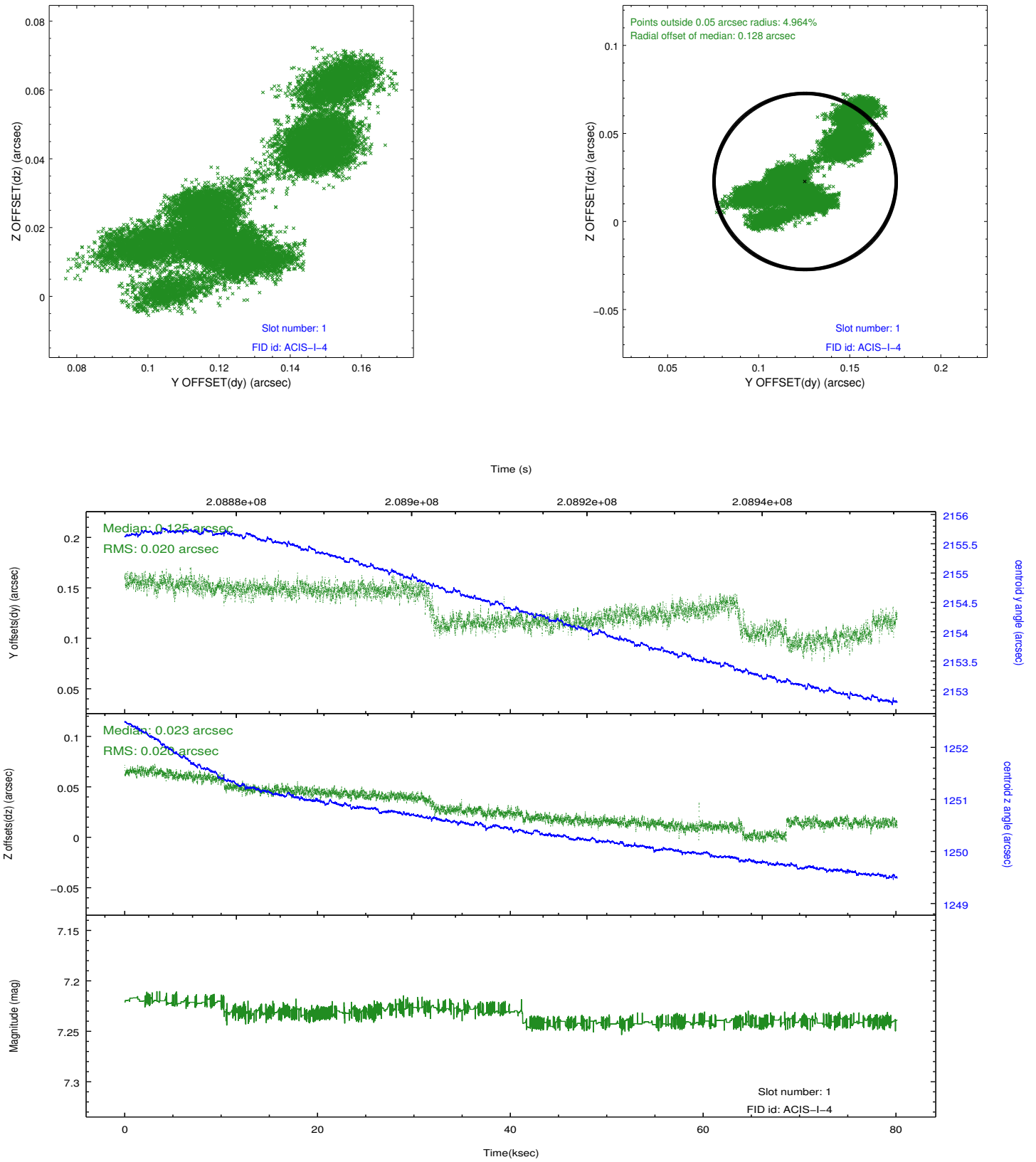


2.5 FID Slots

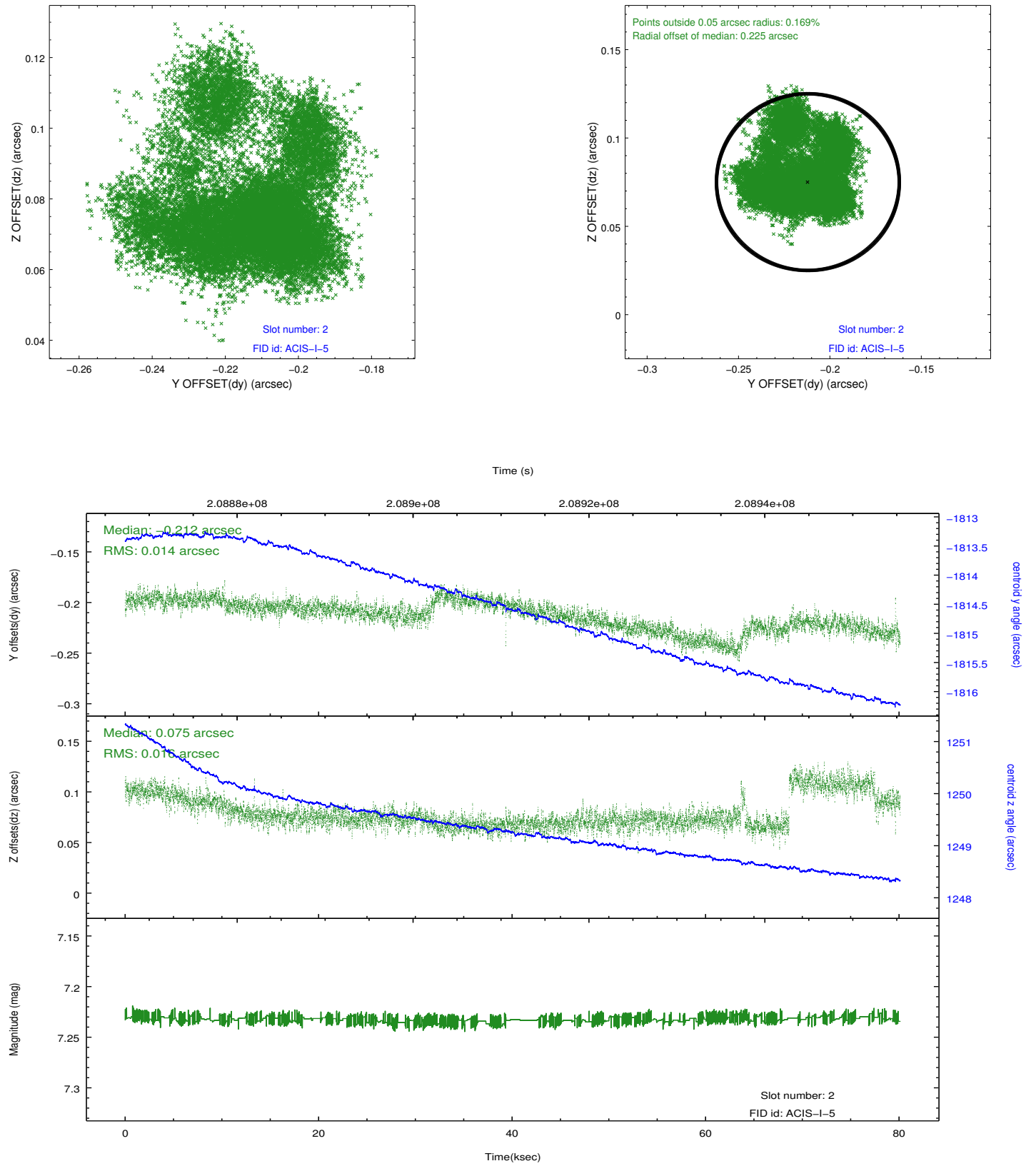
2.5.1 Slot 0



2.5.2 Slot 1



2.5.3 Slot 2



A Summary

A.1 Status

V&V Scientist	Jen Lauer
V&V Date (YYYY-MM-DD)	2012.12.21
V&V Edition	1
V&V Disposition and Status	OK
V&V Charge Time	80.1

A.2 Comments

Obsid contained an ACIS anomaly (missing BEP packet.)