

V&V Reference Report

L2 ASCDS Version : 7.6.7.2

Observation 5337 - L2 Version 001
Chandra X-Ray Center

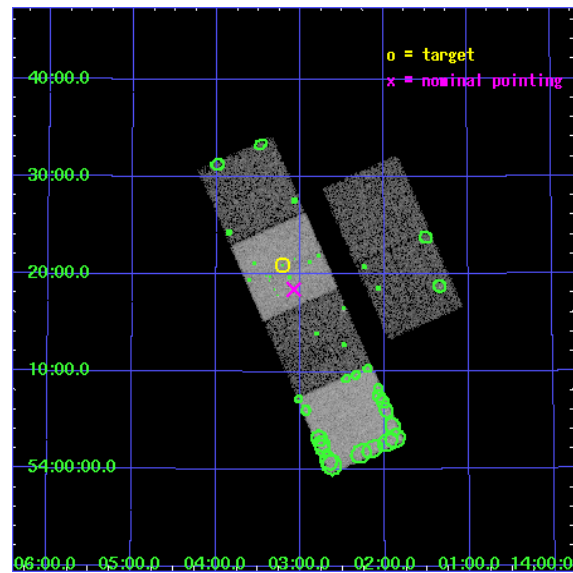
L2 Processing Date : Apr 29 2006

Contents

1	Front	2
2	OBI	3
2.1	OBI	3
2.1.1	Images	3
2.1.2	Bias	3
2.1.3	Parameters	4
2.1.4	Events	4
2.2	Compared Parameters	5
2.3	Aspect	6
2.4	Star Slots	9
2.4.1	Slot 3	9
2.4.2	Slot 4	10
2.4.3	Slot 5	11
2.4.4	Slot 6	12
2.4.5	Slot 7	13
2.5	FID Slots	14
2.5.1	Slot 0	14
2.5.2	Slot 1	15
2.5.3	Slot 2	16
3	Point Sources	17
A	Summary	18
A.1	Status	18
A.2	Comments	18

1 Front

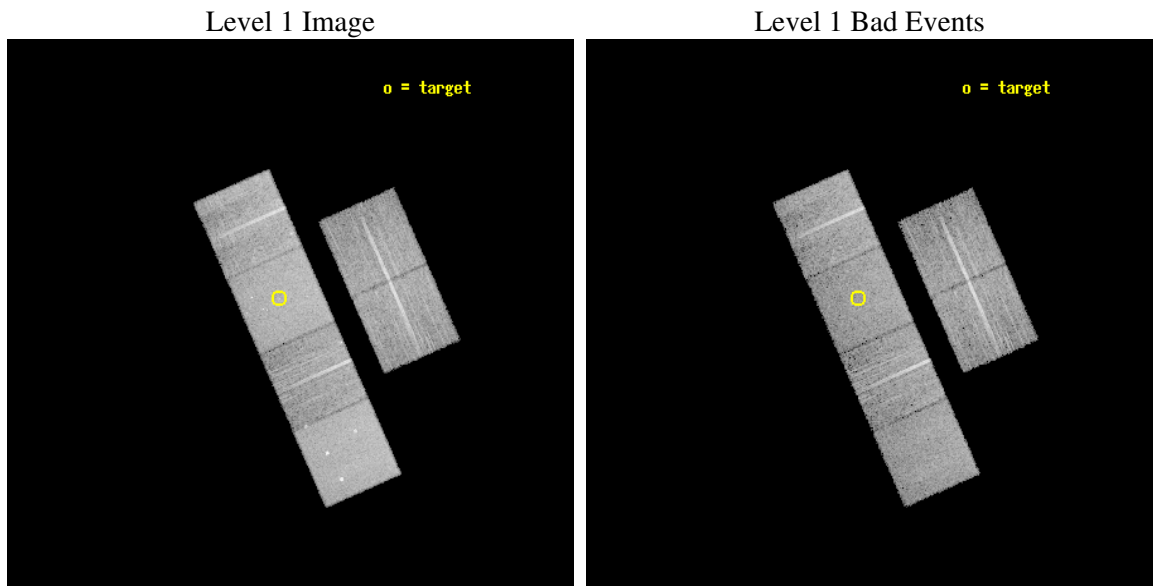
seq_num	600389
obs_id	5337
title	An Ultra-Deep Study of M101
observer	Dr. K. Kuntz
object	M101
dtcycle	0
cycle	P
ra_targ	210.80375
dec_targ	54.348778
ra_nom	210.76928101445
dec_nom	54.307735077198
roll_nom	246.18464800067
revision	2
ontime	10070.399962485
livetime	9942.882494493
ontime2	10070.399962485
ontime3	10070.399962485
ontime5	10070.399962485
ontime6	10070.399962485
ontime7	10070.399962485
ontime8	10070.399962485
l2events	116384



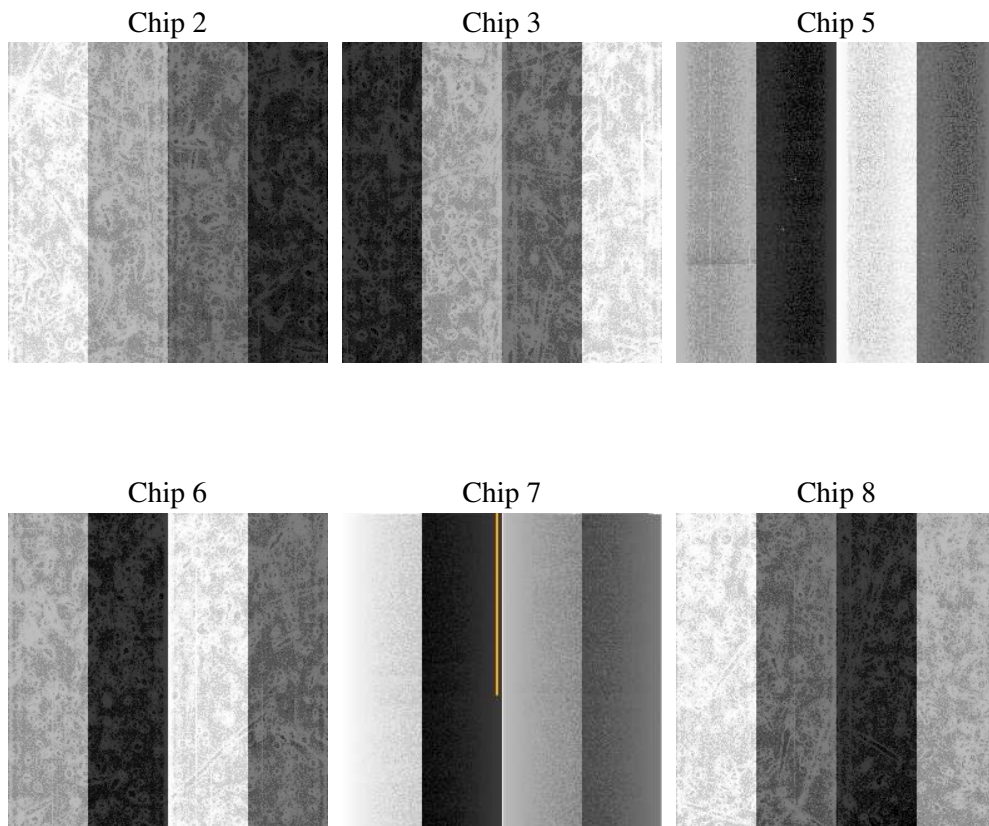
2 OBI

2.1 OBI

2.1.1 Images



2.1.2 Bias



2.1.3 Parameters

obi_num	0
ascdsver	7.6.7.2
caldsver	3.2.1
date	2006-04-29T09:31:19
revision	2

sched_exp_time	9964.000000
ontime	10228.604793608
ontime2	10228.604763716
ontime3	10228.604763716
ontime5	10228.604793608
ontime6	10228.604763716
ontime7	10228.604793608
ontime8	10228.604793608
l1events	542412

2.1.4 Events

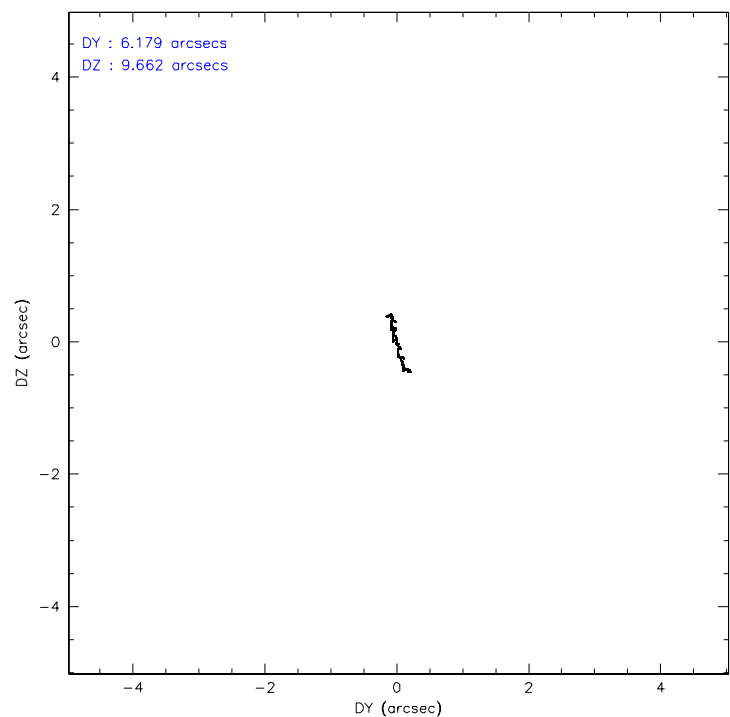
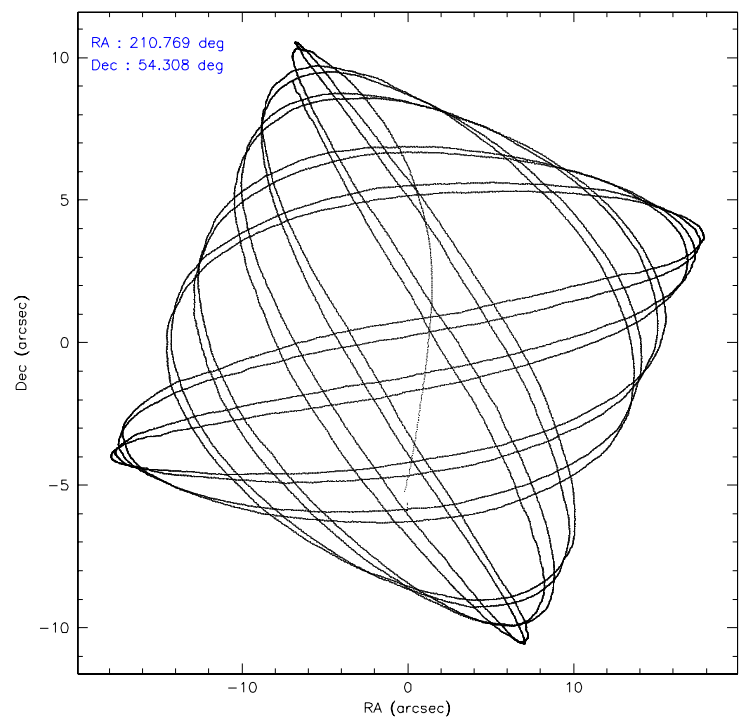
	ccd 2	ccd 3	ccd 5	ccd 6	ccd 7	ccd 8
level 1 events	79159	73395	112949	76764	104377	95768
rejected events	70280	64885	64418	67625	64659	76748
rejected %	88%	88%	57%	88%	61%	80%

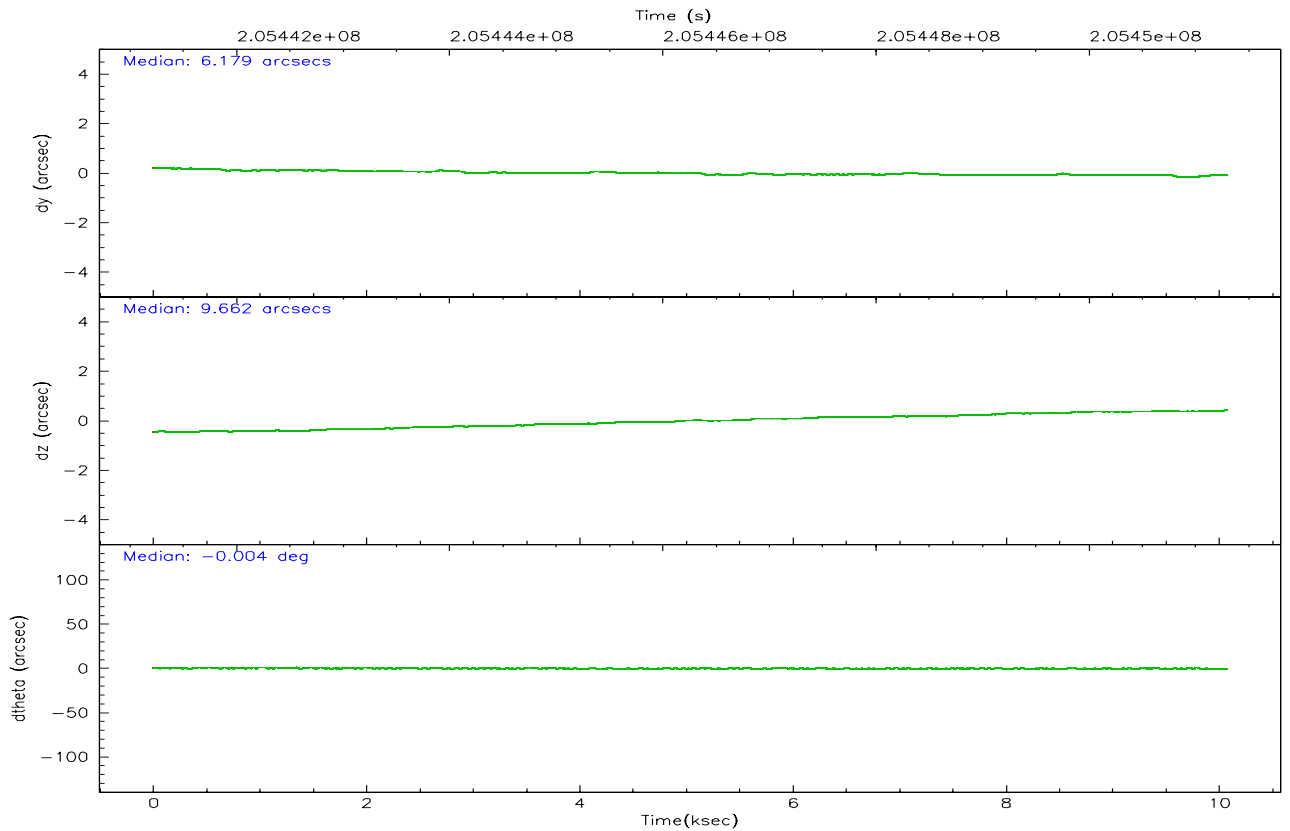
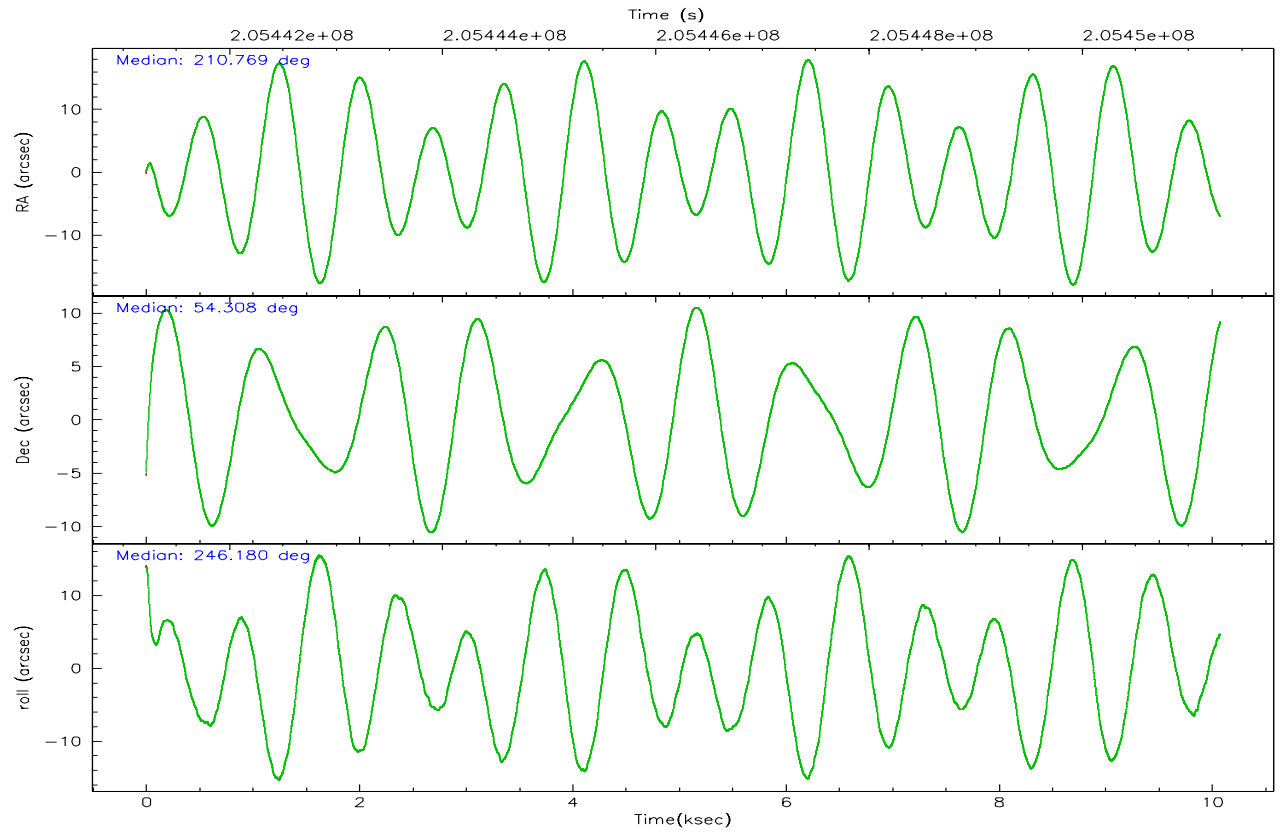
	ccd 2	ccd 3	ccd 5	ccd 6	ccd 7	ccd 8
grade 0 events	4006	3736	3650	3748	2787	6330
	5%	5%	3%	4%	2%	6%
grade 1 events	56	33	155	28	72	52
	0%	0%	0%	0%	0%	0%
grade 2 events	1792	1663	14711	1899	9939	4341
	2%	2%	13%	2%	9%	4%
grade 3 events	826	892	1034	884	2000	1873
	1%	1%	0%	1%	1%	1%
grade 4 events	907	885	978	903	2054	1797
	1%	1%	0%	1%	1%	1%
grade 5 events	3100	3351	5096	3495	6686	4568
	3%	4%	4%	4%	6%	4%
grade 6 events	1492	1483	29020	1849	23525	5056
	1%	2%	25%	2%	22%	5%
grade 7 events	66980	61352	58305	63958	57314	71751
	84%	83%	51%	83%	54%	74%

2.2 Compared Parameters

Parameter	Planned	Actual	Parameter	Planned	Actual
Instrument	ACIS	ACIS	Obspar format version number	6	6
Detector	ACIS-235678	ACIS-235678	Obspar file type	PREDICTED	ACTUAL
Grating	NONE	NONE	Obspar update status	NONE	UPDATED
Data mode	VFAINT	VFAINT	On-chip summing requested	N	N
Observation mode	POINTING	POINTING	Subarray requested	NONE	NONE
Pointing RA	210.763621	210.7692810144503	Alternating exposures requested	N	N
Pointing Dec	54.334730	54.30773507719813	Primary exposure time	0.000000	3.2
Pointing Roll	246.032598	246.1846480006733			
SIM focus pos (mm)	-0.684267	-0.6828225247311905			
SIM defocus (mm)	0	0.001444936568705701			
SIM translation stage pos (mm)	-190.132523	-190.1400660498719			
SIM translation stage offset (mm)	0	0.00754346686406393			
Observation start time	205441325.184000	205440157.71975			
Observation start date	2004-07-05T19:01:01	2004-07-05T18:42:37			
Observation end time	205451289.184000	205452118.95778			
Observation end date	2004-07-05T21:47:05	2004-07-05T22:01:58			
Read mode	TIMED	TIMED			

2.3 Aspect



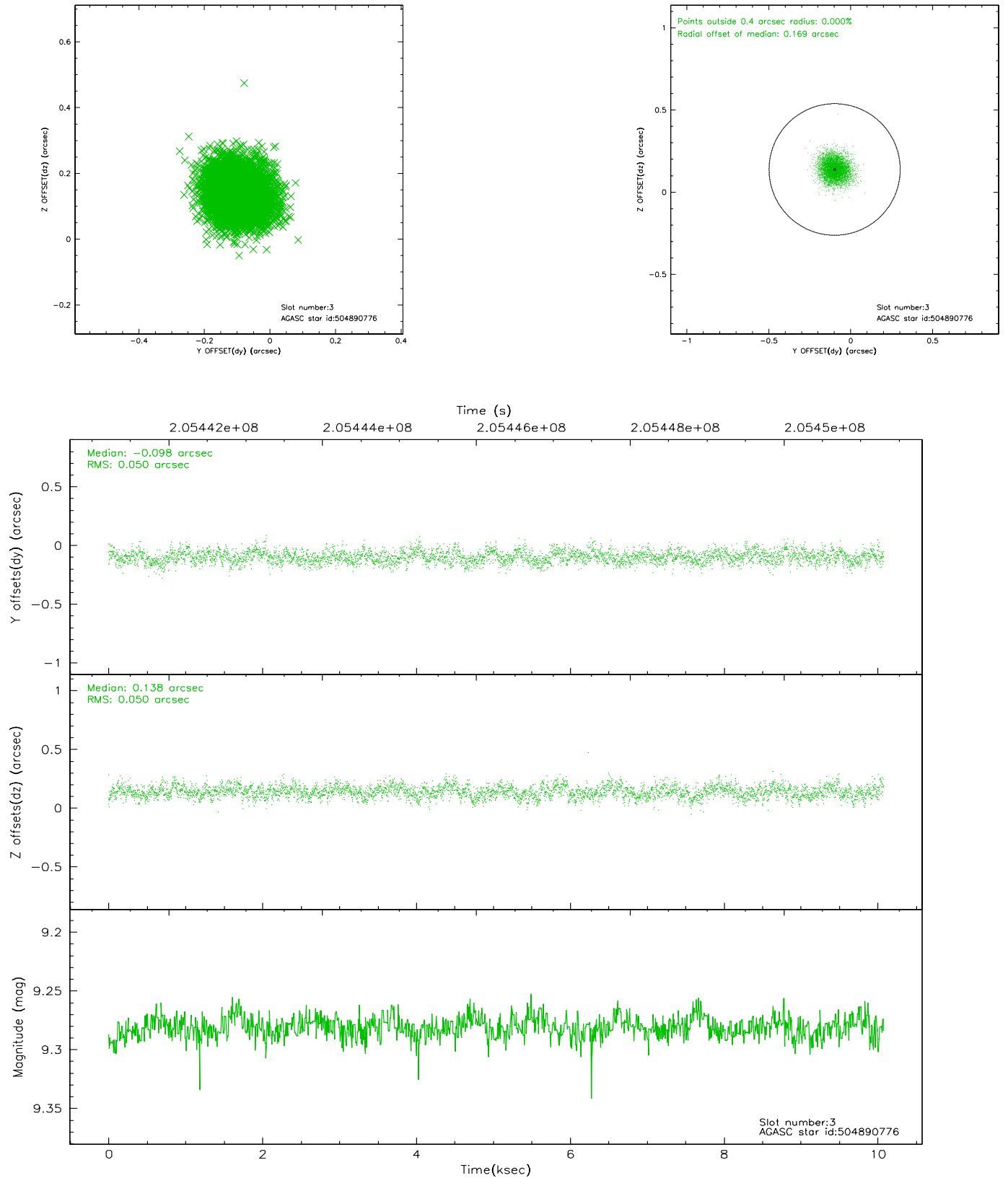


Slot Statistics

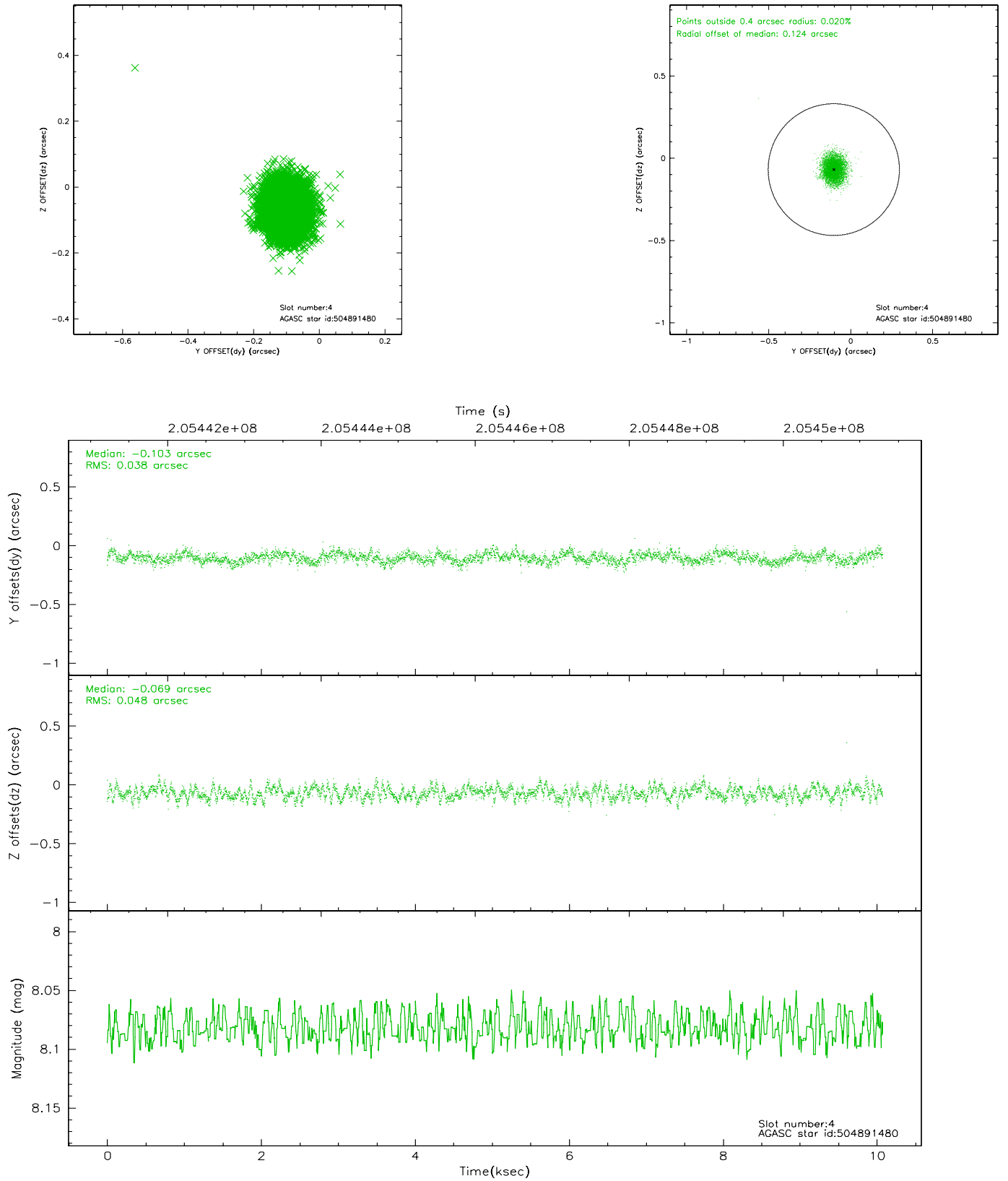
slot	status	id	mag	n_pts	med_dy	med_dz	dr1	dr2	ra	dec	mean_y	mean_z
0	FID	ACIS-S-2	7.10	2458	-0.058	-0.030	0.007	0.012	0.000000	0.000000	-758.97	-1730.91
1	FID	ACIS-S-4	7.20	2459	0.037	0.039	0.006	0.010	0.000000	0.000000	2154.16	177.10
2	FID	ACIS-S-6	7.35	2459	-0.007	-0.002	0.008	0.014	0.000000	0.000000	403.73	815.05
3	GUIDE	504890776	9.28	4913	-0.098	0.138	0.075	0.122	211.095934	54.816966	-1867.47	-75.78
4	GUIDE	504891480	8.08	4915	-0.103	-0.069	0.065	0.102	210.708012	54.666096	-1043.03	-590.34
5	GUIDE	504893088	9.21	4917	0.058	-0.061	0.080	0.129	210.351715	54.364955	249.66	-834.61
6	GUIDE	504894856	8.98	4916	0.093	-0.085	0.090	0.144	209.819510	54.132689	1462.16	-1529.51
7	GUIDE	504890480	8.18	4916	0.049	0.077	0.073	0.114	210.132463	53.768436	2404.38	-401.52

2.4 Star Slots

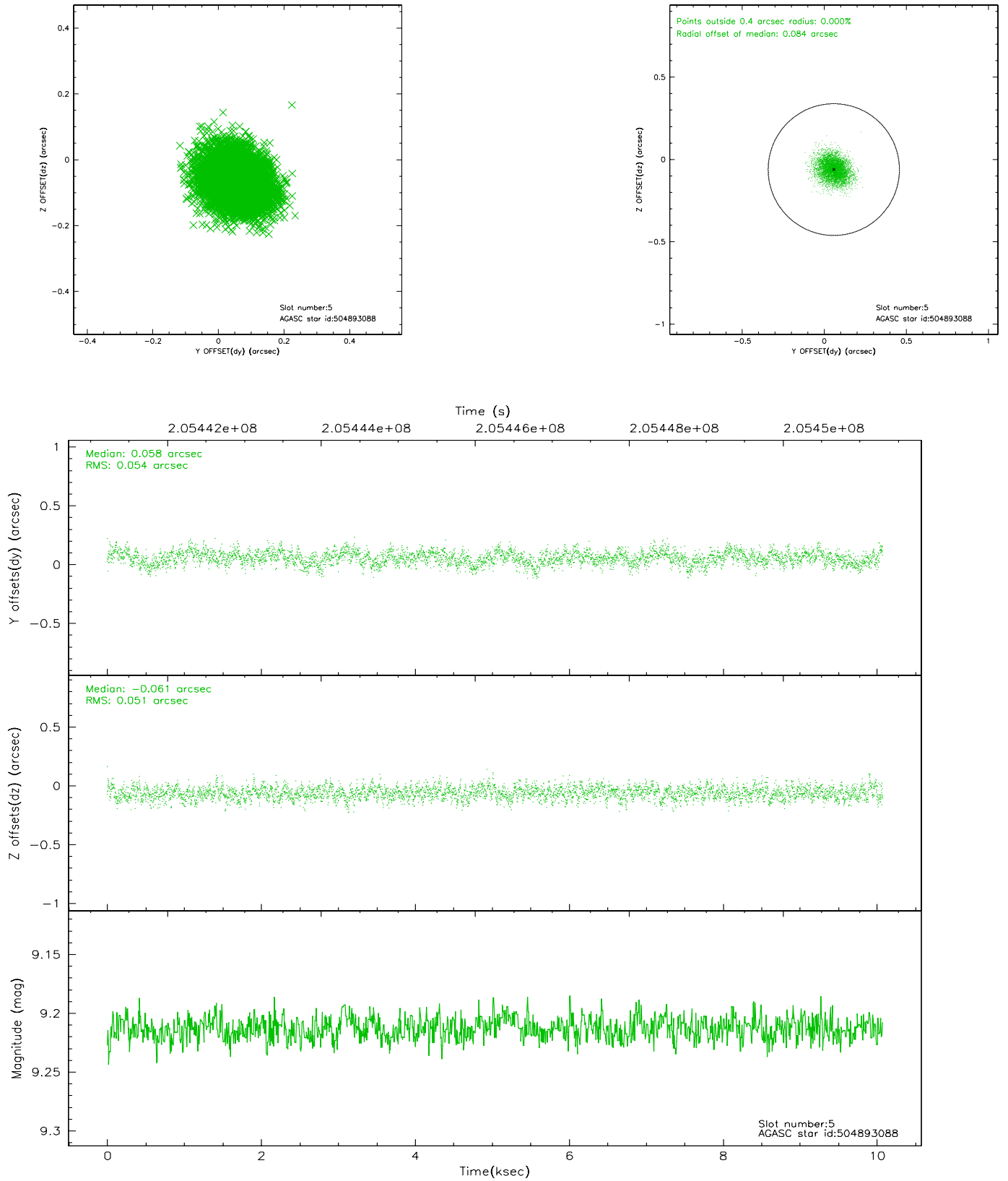
2.4.1 Slot 3



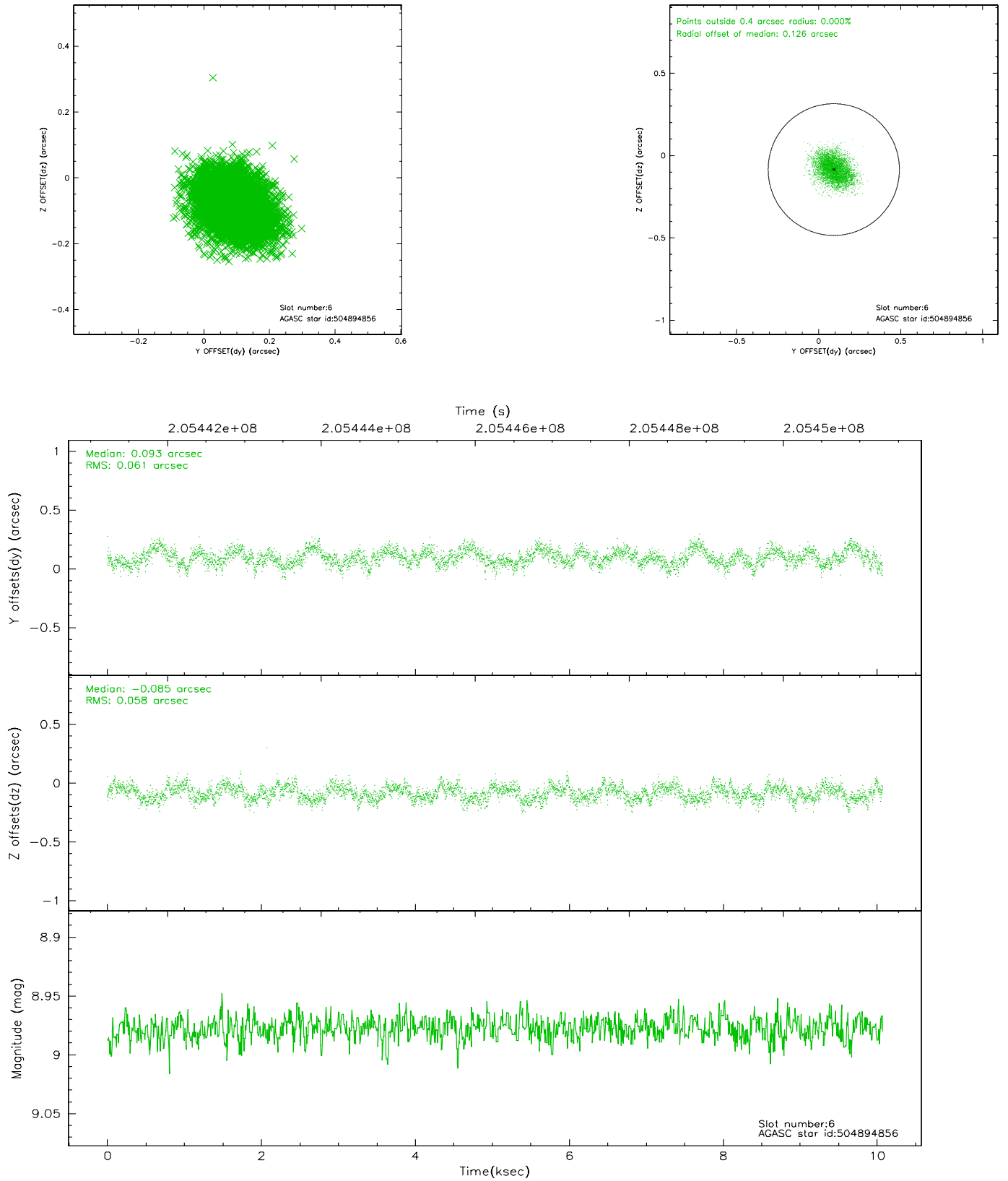
2.4.2 Slot 4



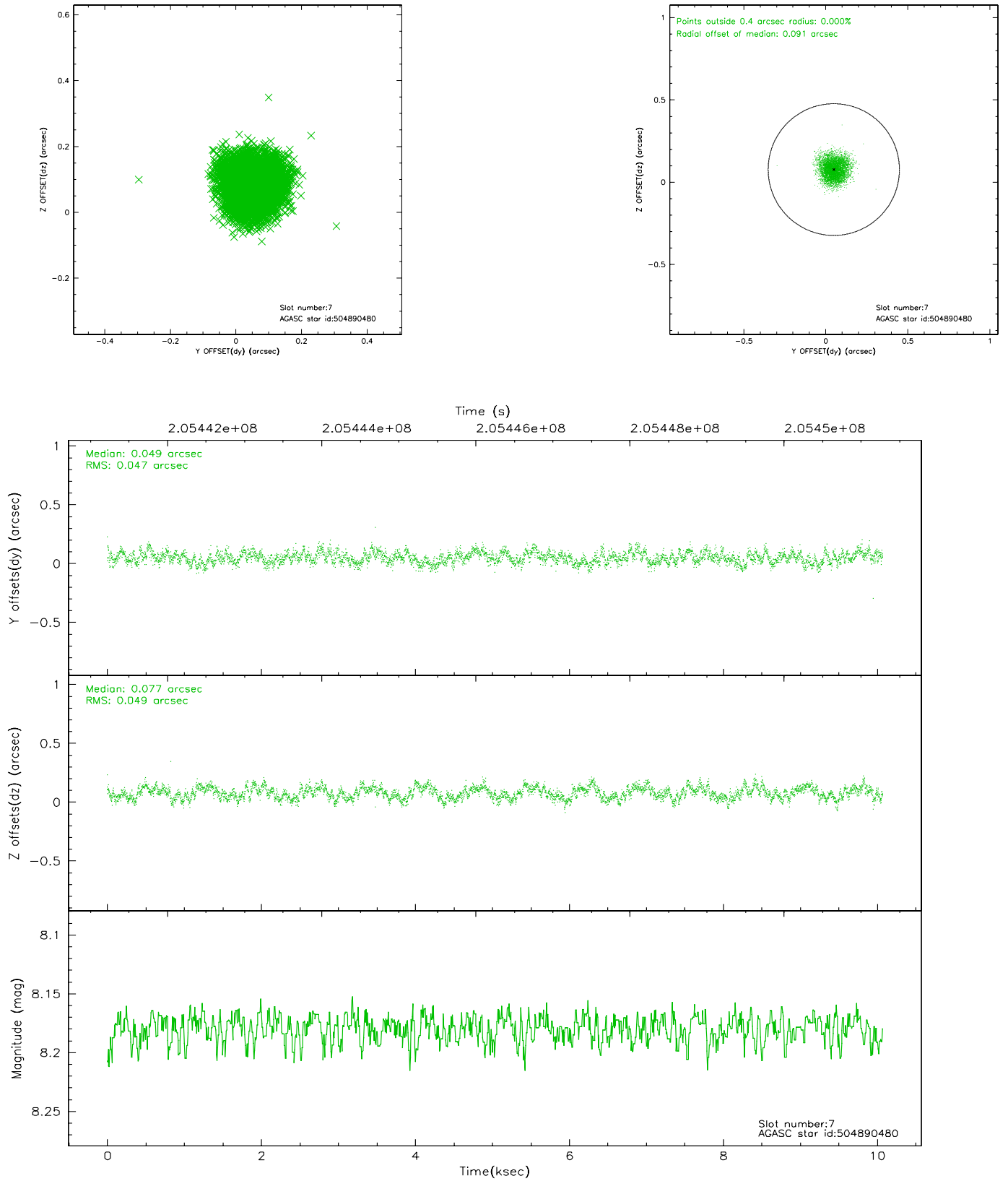
2.4.3 Slot 5



2.4.4 Slot 6

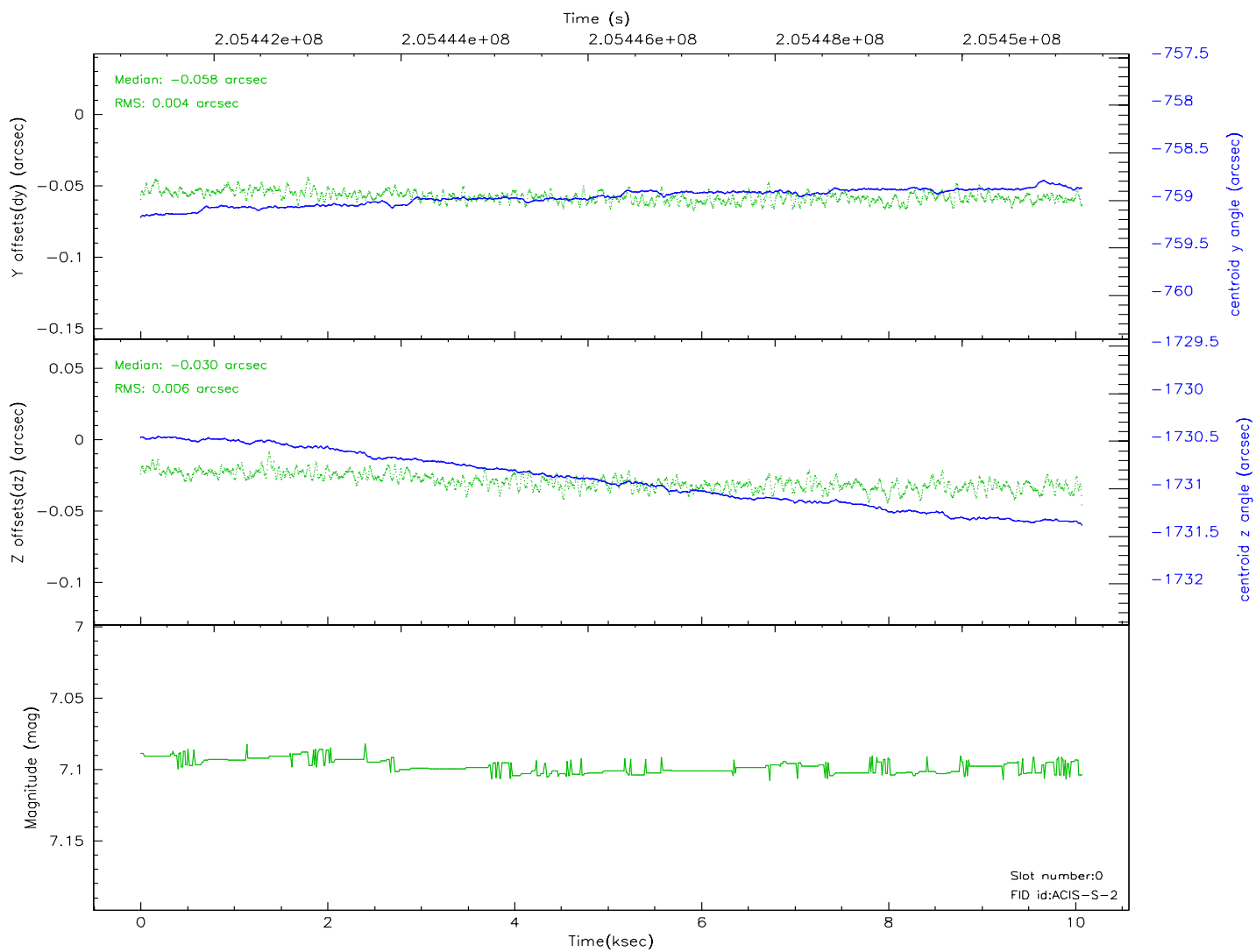
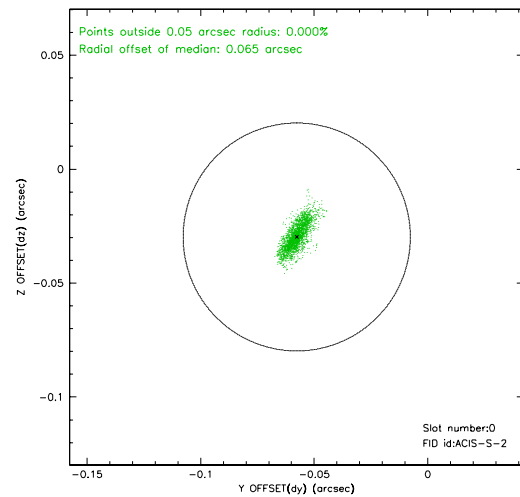
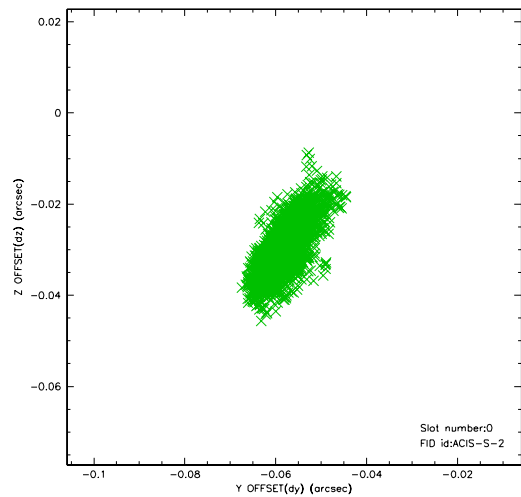


2.4.5 Slot 7

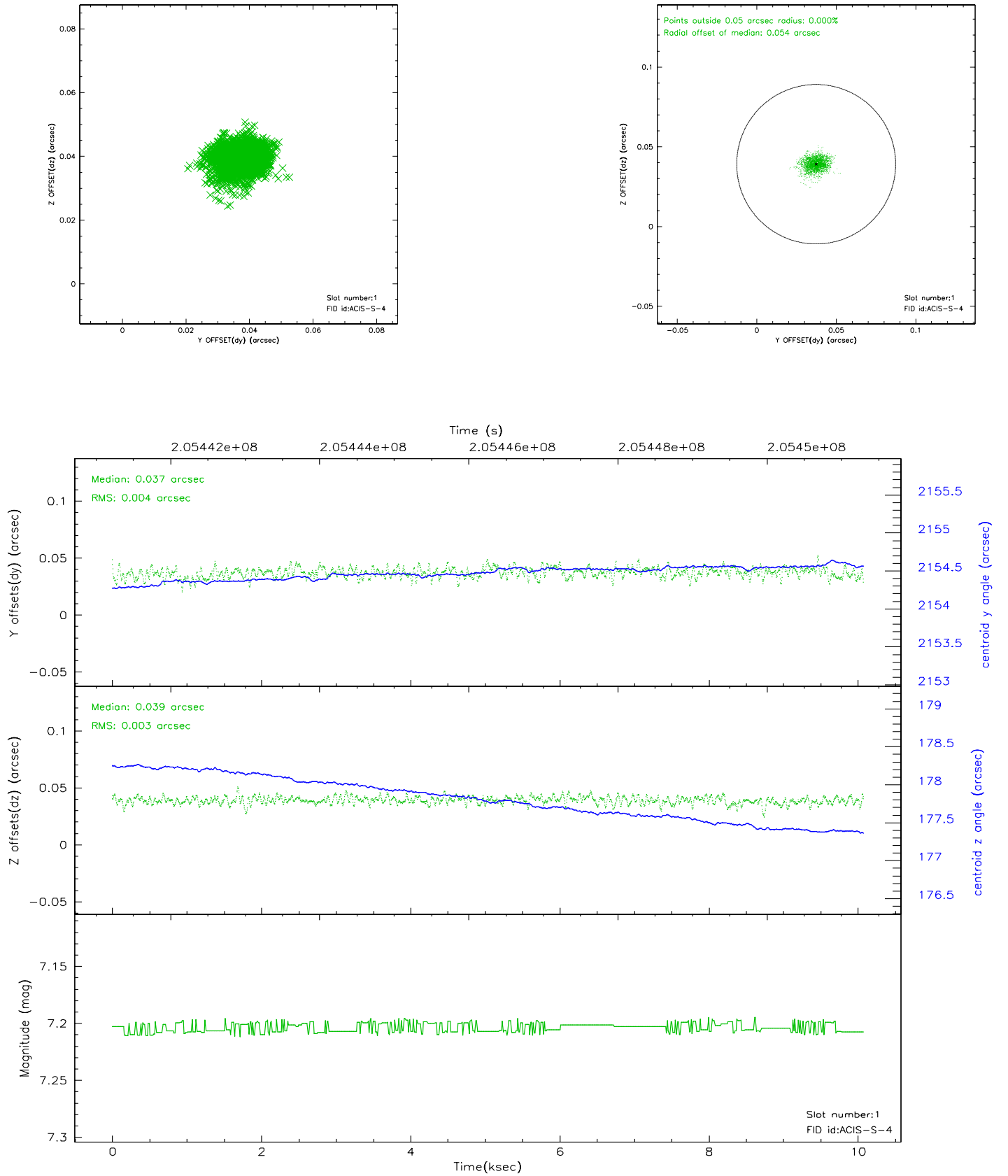


2.5 FID Slots

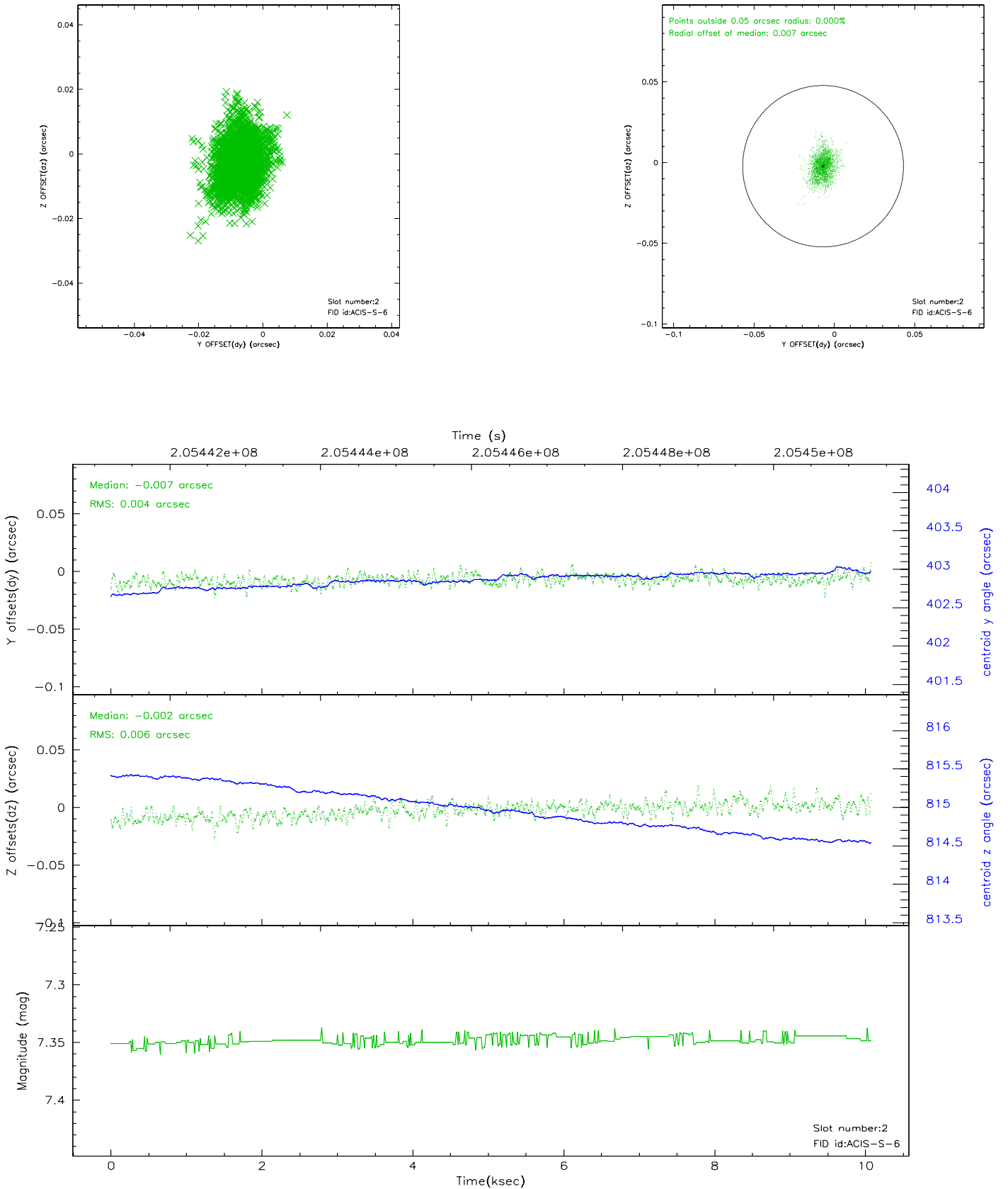
2.5.1 Slot 0



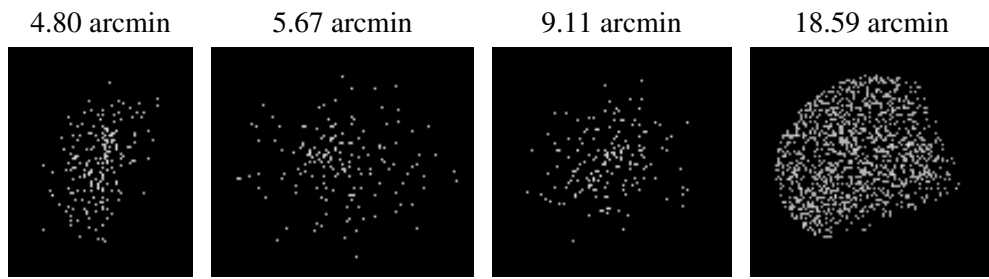
2.5.2 Slot 1



2.5.3 Slot 2



3 Point Sources



A Summary

A.1 Status

V&V Scientist	Jen Lauer
V&V Date (YYYY-MM-DD)	2006.04.30
V&V Edition	1
V&V Disposition and Status	OK
V&V Charge Time	10.07

A.2 Comments

Monitor constraint met. The ACIS focal plane temperature decreases by more than a degree over the observation, and is outside calibration limits for the first 4 ksec of the observation.