

V&V Reference Report

L2 ASCDS Version : 7.6.7.2

Observation 5167 - L2 Version 3
Chandra X-Ray Center

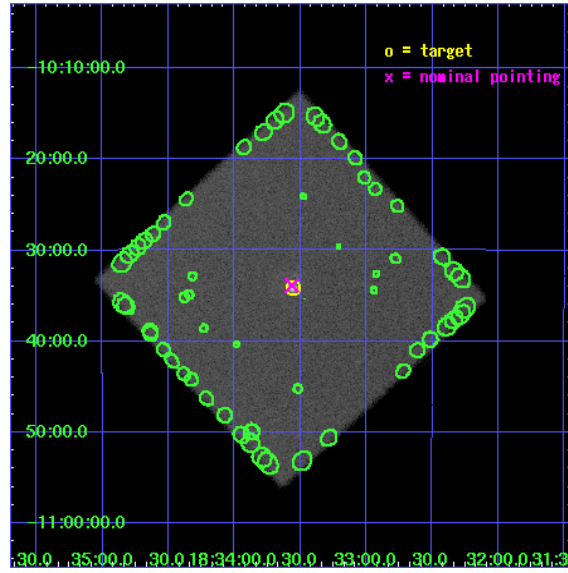
L2 Processing Date : Nov 23 2007

Contents

1	Front	2
2	OBI	3
2.1	OBI	3
2.1.1	Images	3
2.1.2	Parameters	4
2.1.3	Events	4
2.2	Compared Parameters	5
2.3	Aspect	6
2.4	Star Slots	9
2.4.1	Slot 3	9
2.4.2	Slot 4	10
2.4.3	Slot 5	11
2.4.4	Slot 6	12
2.4.5	Slot 7	13
2.5	FID Slots	14
2.5.1	Slot 0	14
2.5.2	Slot 1	15
2.5.3	Slot 2	16
3	Point Sources	17
A	Summary	18
A.1	Status	18
A.2	Comments	18

1 Front

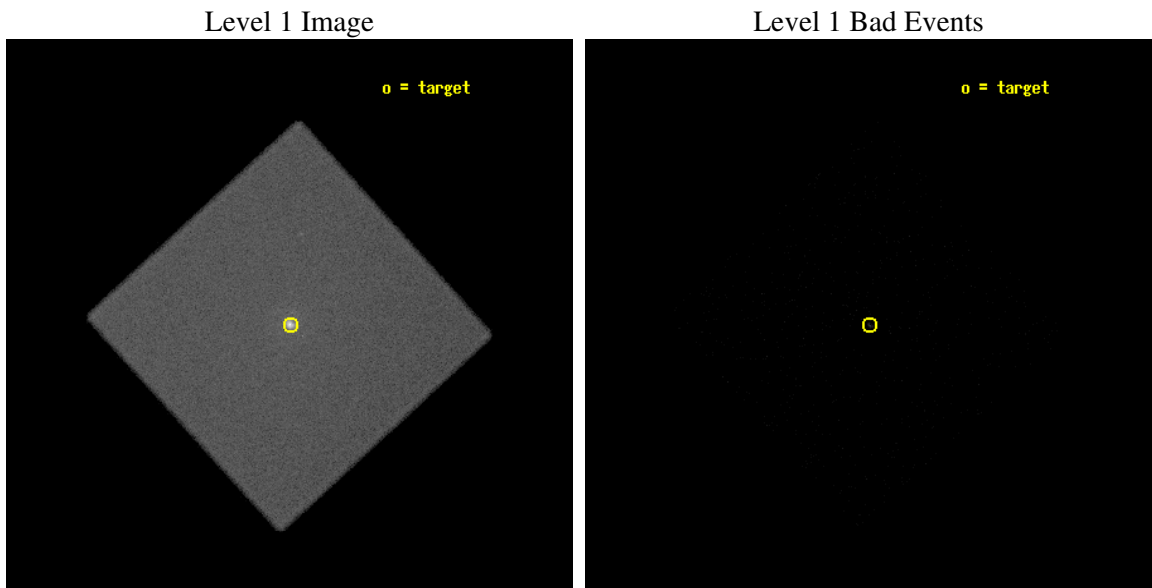
seq_num	590365
obs_id	5167
title	AO5A Observations of the Standard Candles Cas A and G21.5-09
observer	Dr. CXC Calibration
object	G21.5-09
ra_targ	278.389583
dec_targ	-10.568528
ra_nom	278.39104628987
dec_nom	-10.564690117592
roll_nom	92.60476160639
revision	3
ontime	19183.132092774
livetime	19069.490159885
l2events	594815



2 OBI

2.1 OBI

2.1.1 Images



2.1.2 Parameters

obi_num	1
ascdsver	7.6.11.2
caldbver	3.4.1
date	2007-11-23T23:18:20
revision	3

sched_exp_time	19200.000000
ontime	19183.132092774
l1events	893775

2.1.3 Events

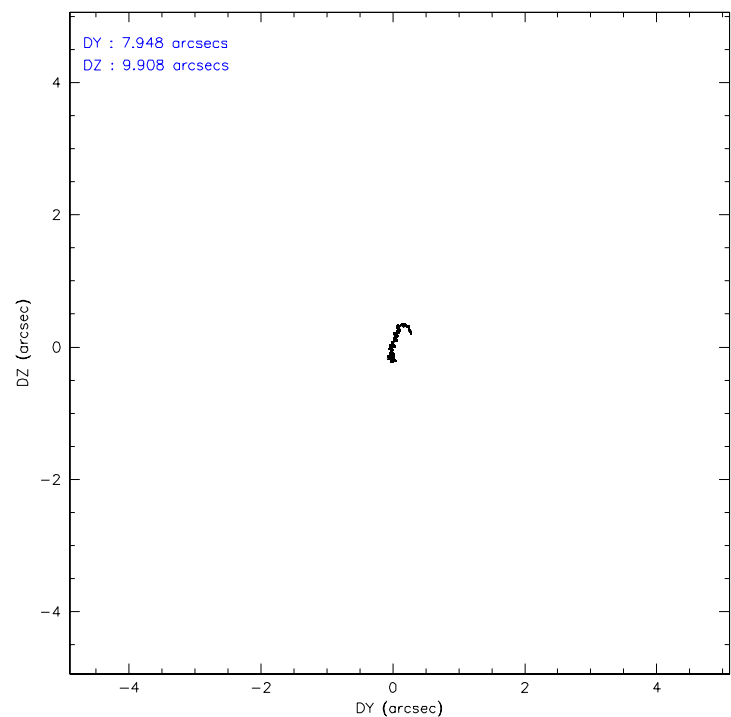
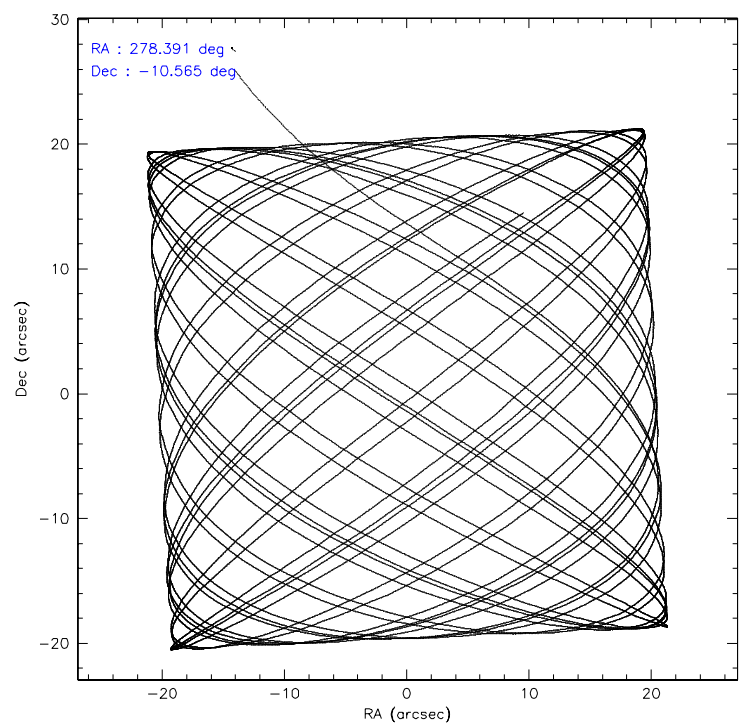
Level 1 Events

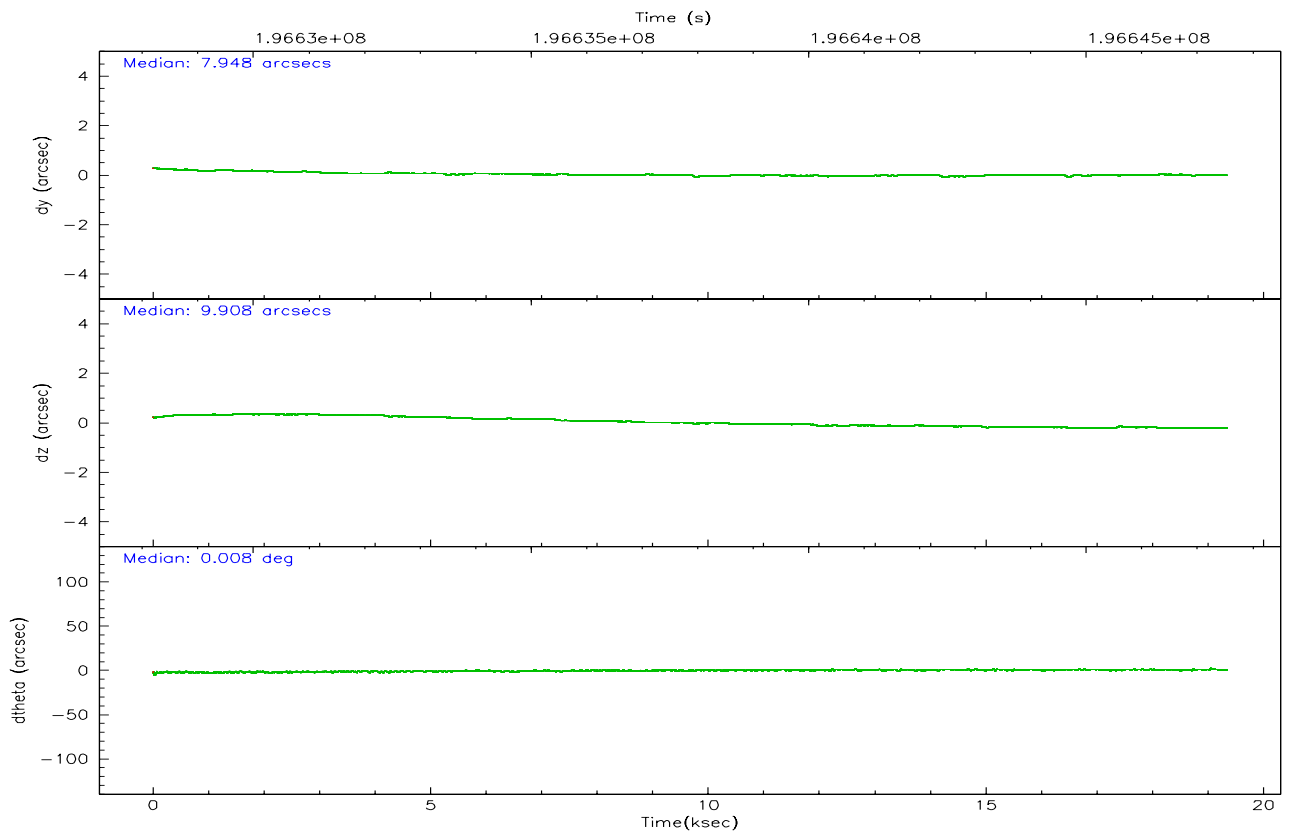
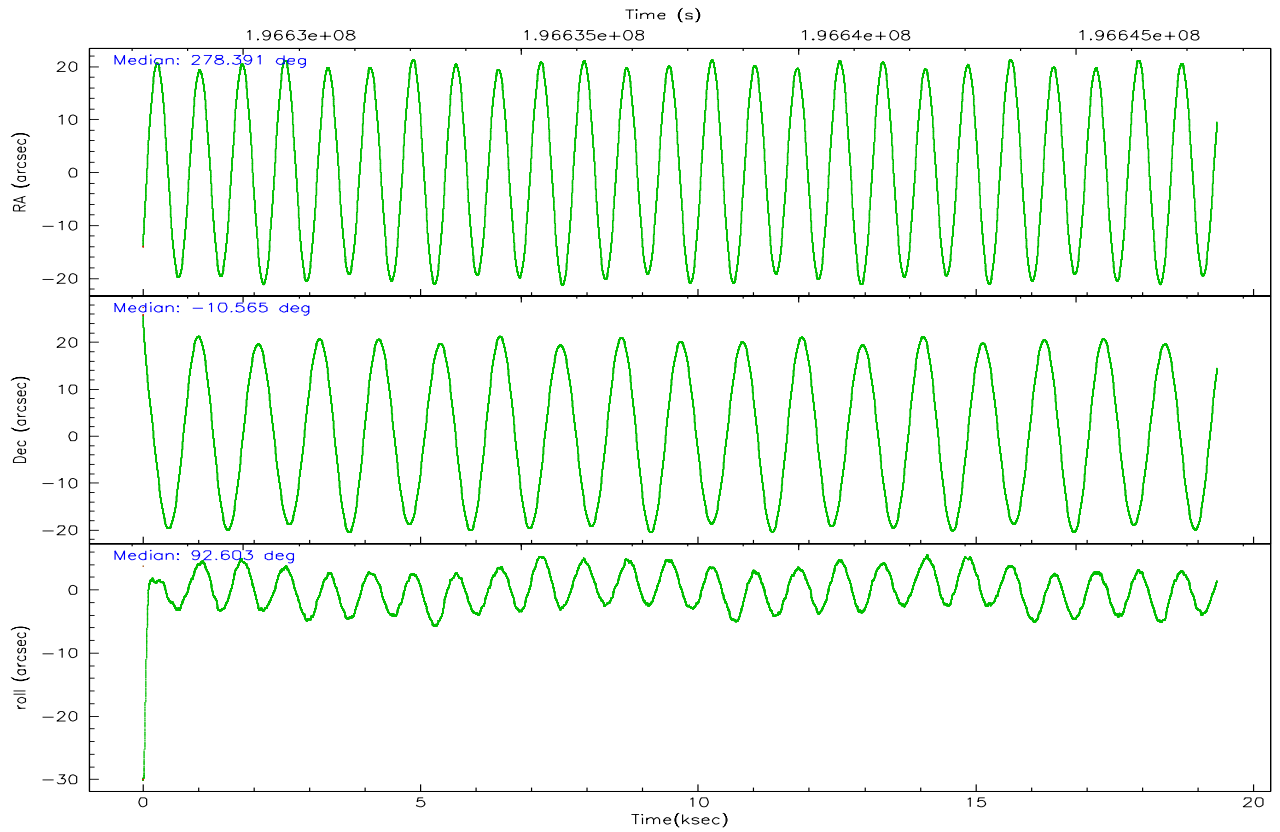
	segment 0
level 1 events	893775
rejected events	8443
rejected %	0%

2.2 Compared Parameters

Parameter	Planned	Actual	Parameter	Planned	Actual
Instrument	HRC	HRC	Obspar format version number	6	6
Detector	HRC-I	HRC-I	Obspar file type	PREDICTED	ACTUAL
Grating	NONE	NONE	Obspar update status	NONE	UPDATED
Data mode	OBSERVING	OBSERVING			
Observation mode	POINTING	POINTING			
Pointing RA	278.406431	278.3910462898677			
Pointing Dec	-10.587100	-10.56469011759169			
Pointing Roll	92.703092	92.60476160639027			
Window start time	194486464.184000	194486464.184000			
Window stop time	197078464.184000	197078464.184000			
SIM focus pos (mm)	-1.040293	-1.038866356238299			
SIM defocus (mm)	0	0.001426264420575141			
SIM translation stage pos (mm)	126.985494	126.9829799899862			
SIM translation stage offset (mm)	0	0.002508901615314585			
Observation start time	196628339.184000	196627412.33077			
Observation start date	2004-03-25T18:57:55	2004-03-25T18:43:32			
Observation end time	196647539.184000	196647678.11916			
Observation end date	2004-03-26T00:17:55	2004-03-26T00:21:18			

2.3 Aspect



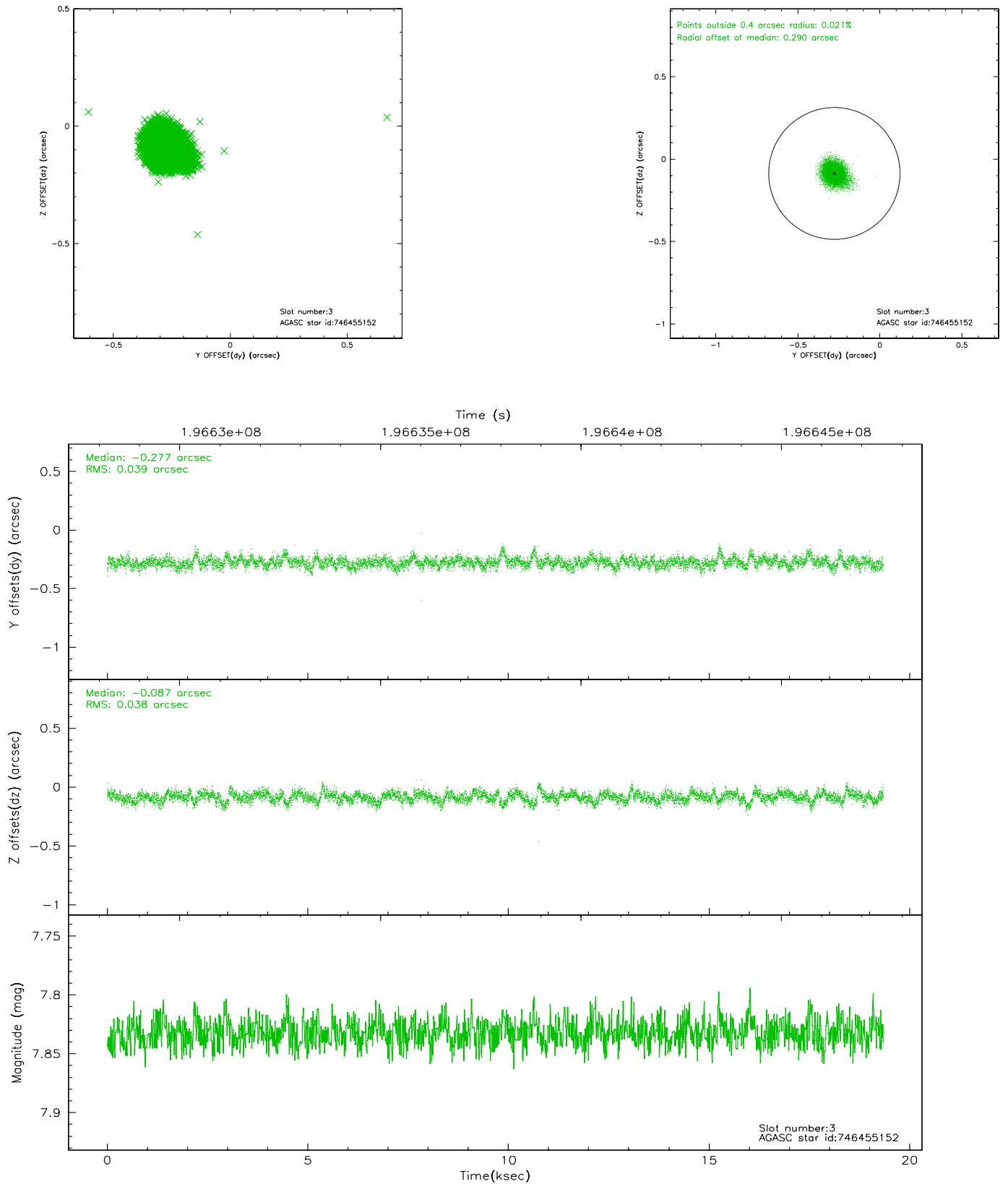


Slot Statistics

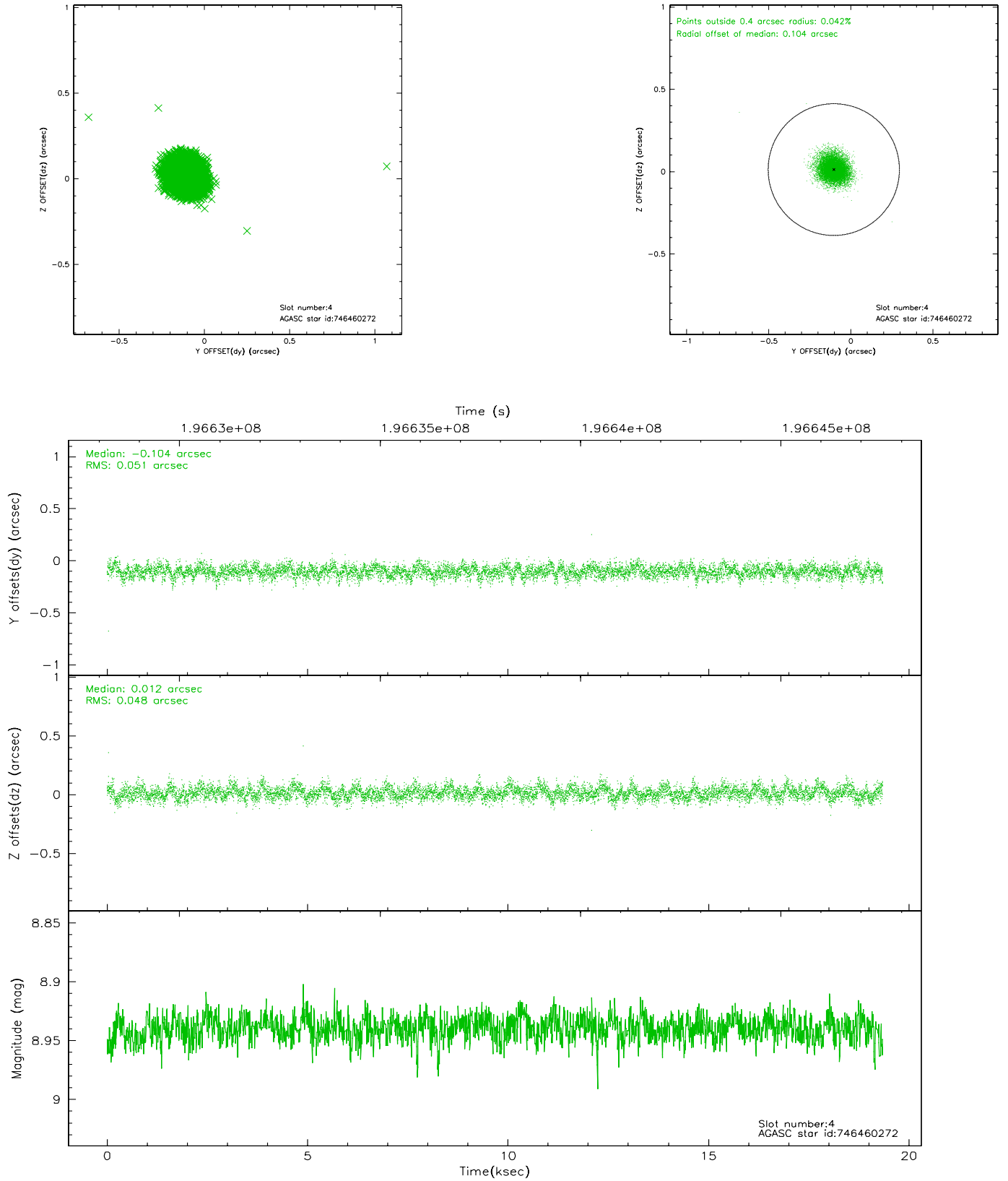
slot	status	id	mag	n_pts	med_dy	med_dz	dr1	dr2	ra	dec	mean_y	mean_z
0	FID	HRC-I-1	6.99	4719	-0.028	0.033	0.011	0.016	0.000000	0.000000	-763.61	-1297.85
1	FID	HRC-I-2	7.03	4719	0.129	-0.067	0.008	0.013	0.000000	0.000000	849.01	-1299.78
2	FID	HRC-I-3	7.08	4718	0.019	-0.055	0.007	0.012	0.000000	0.000000	-1191.89	1006.35
3	GUIDE	746455152	7.83	9435	-0.277	-0.087	0.056	0.095	278.447893	-9.976732	2188.37	-250.25
4	GUIDE	746460272	8.94	9436	-0.104	0.012	0.072	0.119	278.847488	-10.152127	1490.27	-1634.77
5	GUIDE	746461728	9.76	9428	0.037	0.083	0.127	0.210	278.986921	-10.530755	104.78	-2061.59
6	GUIDE	746462392	8.54	9435	0.165	0.142	0.083	0.135	279.038421	-10.890715	-1199.39	-2180.45
7	GUIDE	746462456	8.38	9434	0.181	-0.143	0.074	0.116	278.652171	-10.530173	163.56	-878.67

2.4 Star Slots

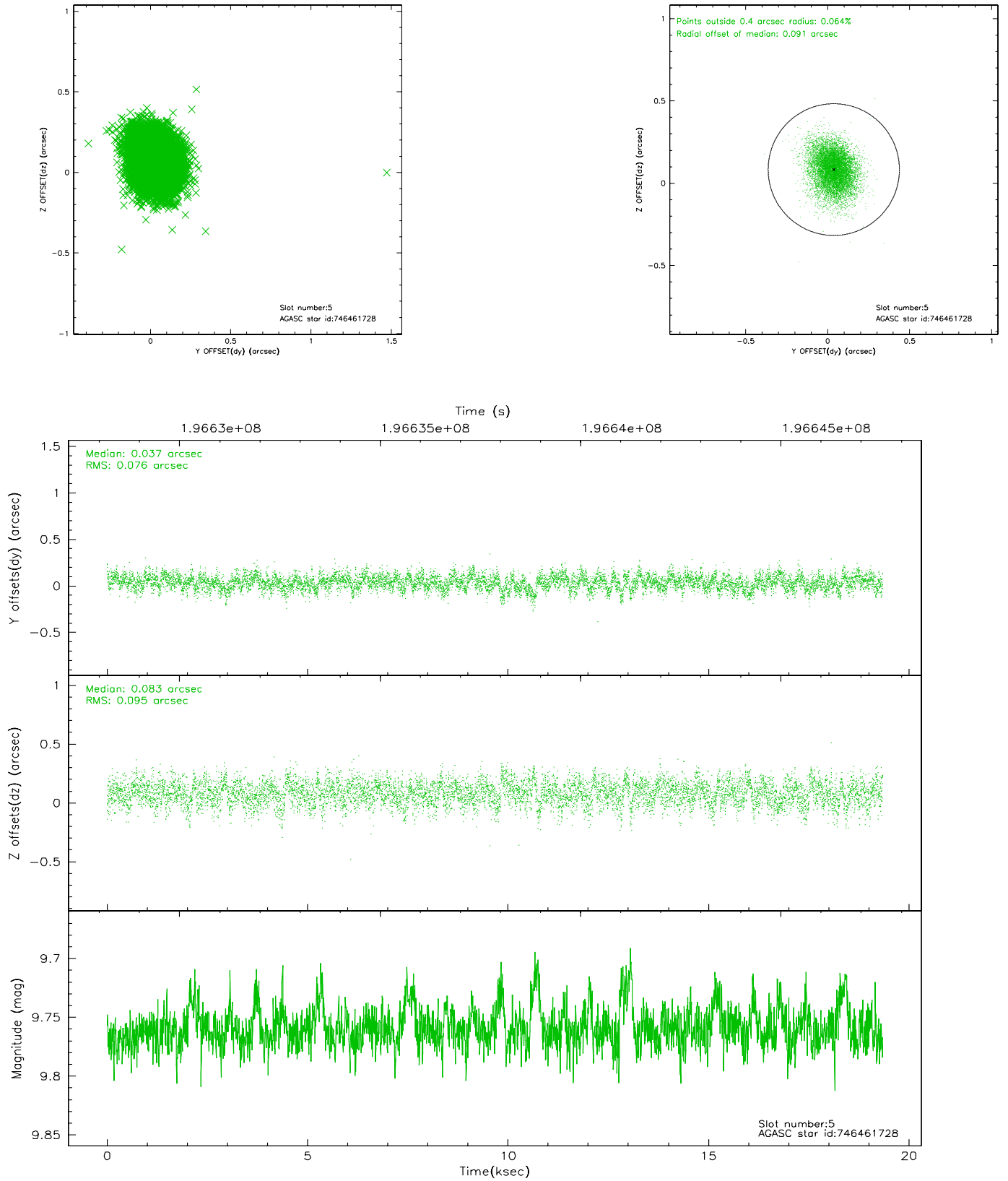
2.4.1 Slot 3



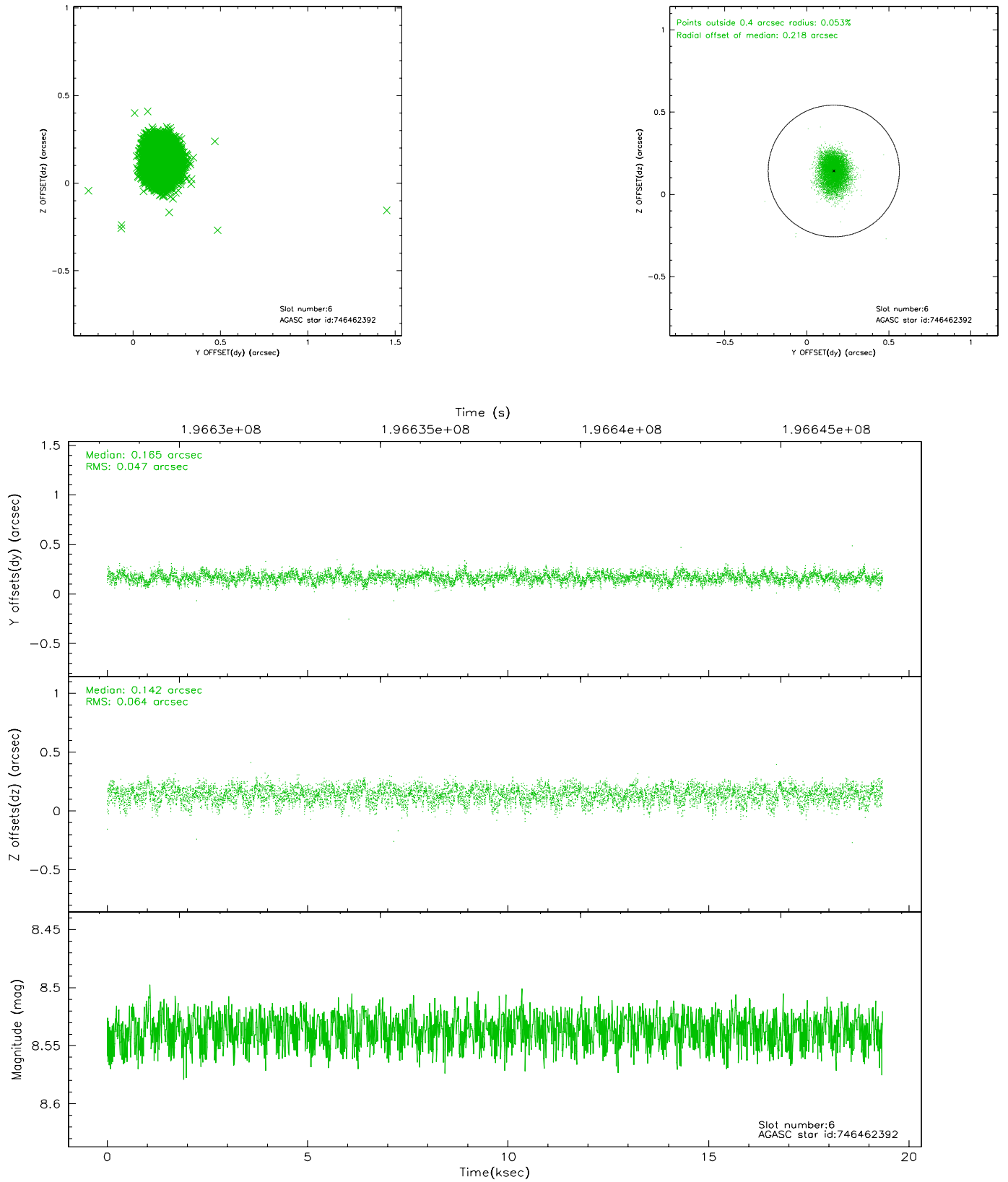
2.4.2 Slot 4



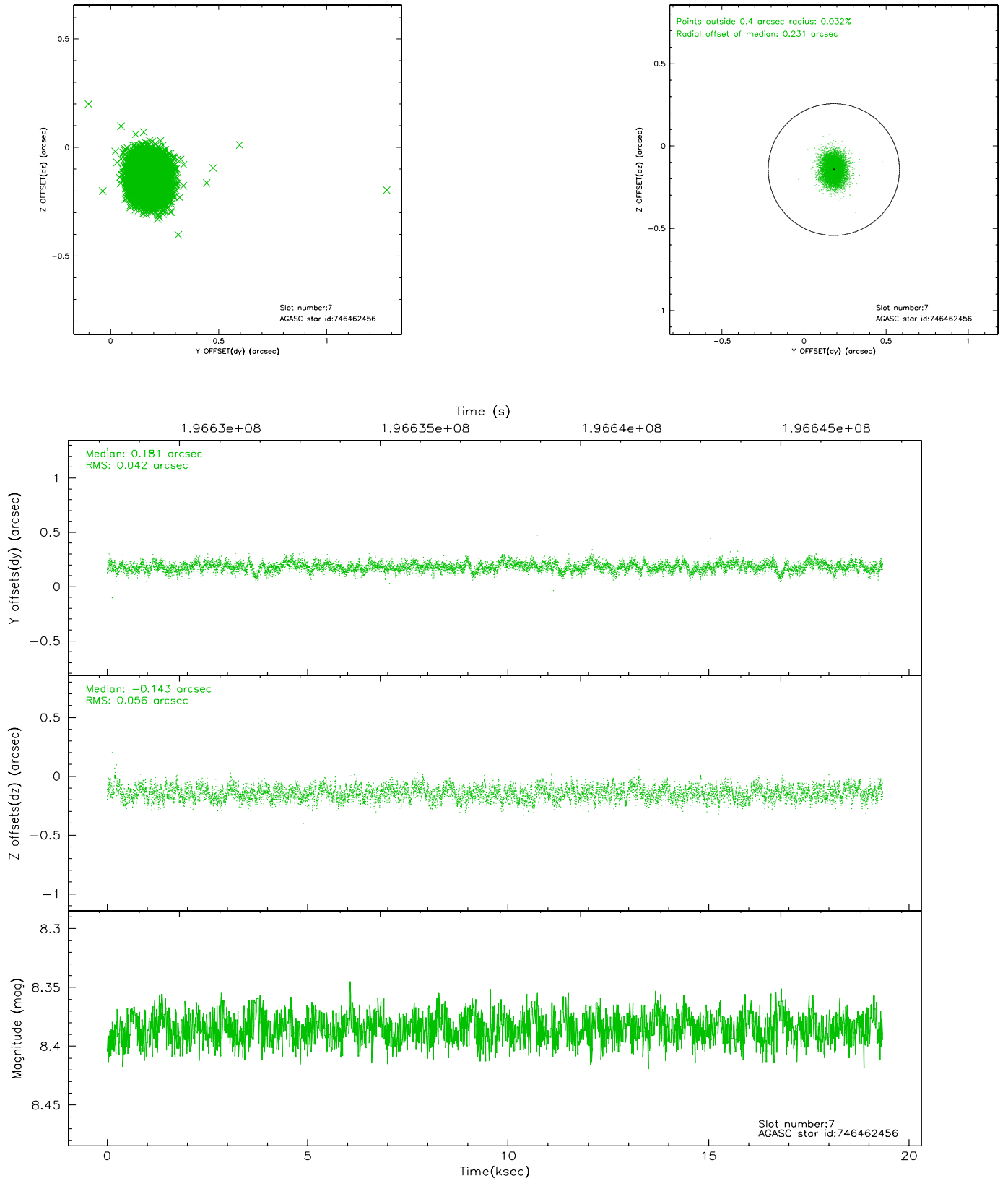
2.4.3 Slot 5



2.4.4 Slot 6

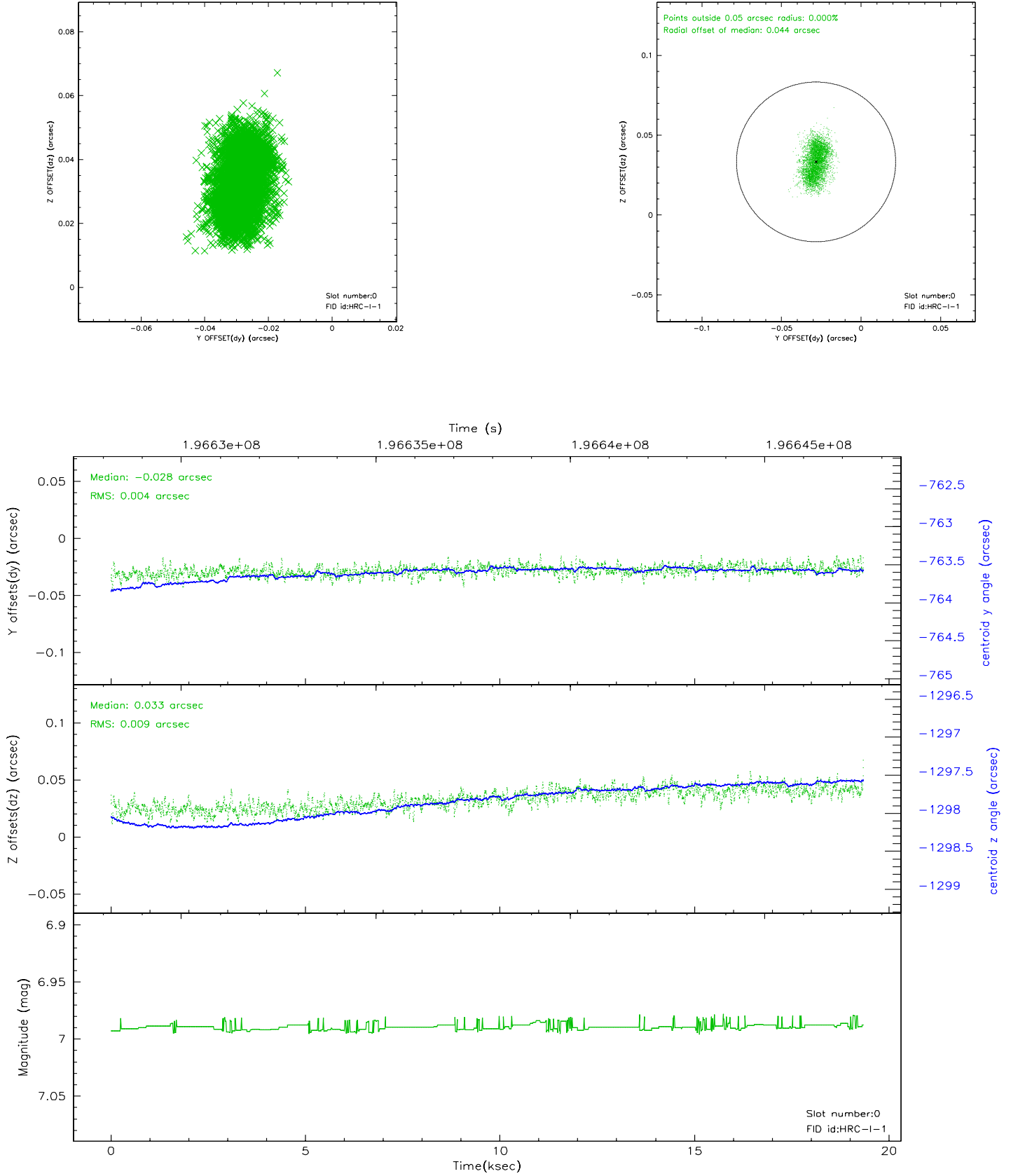


2.4.5 Slot 7

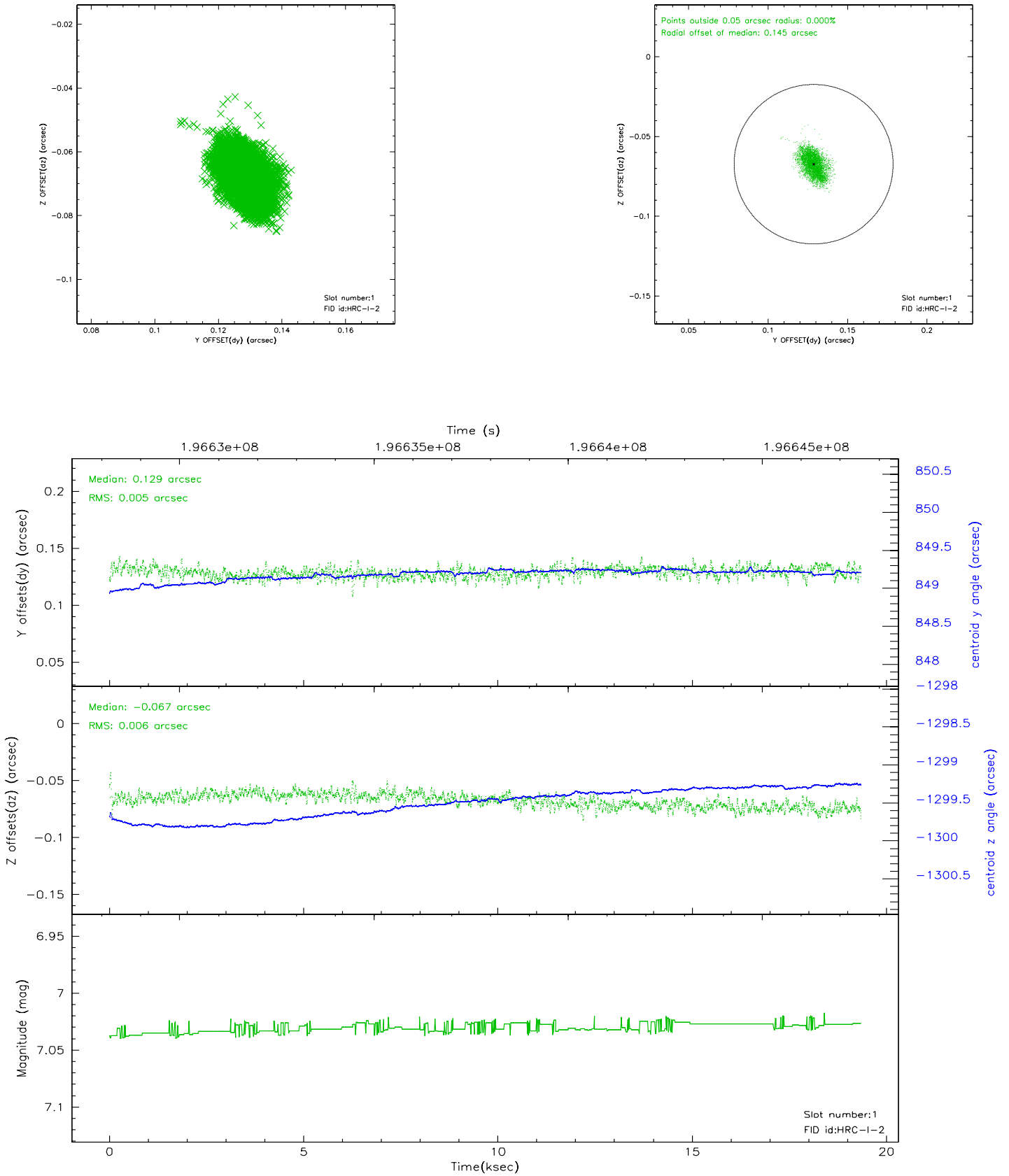


2.5 FID Slots

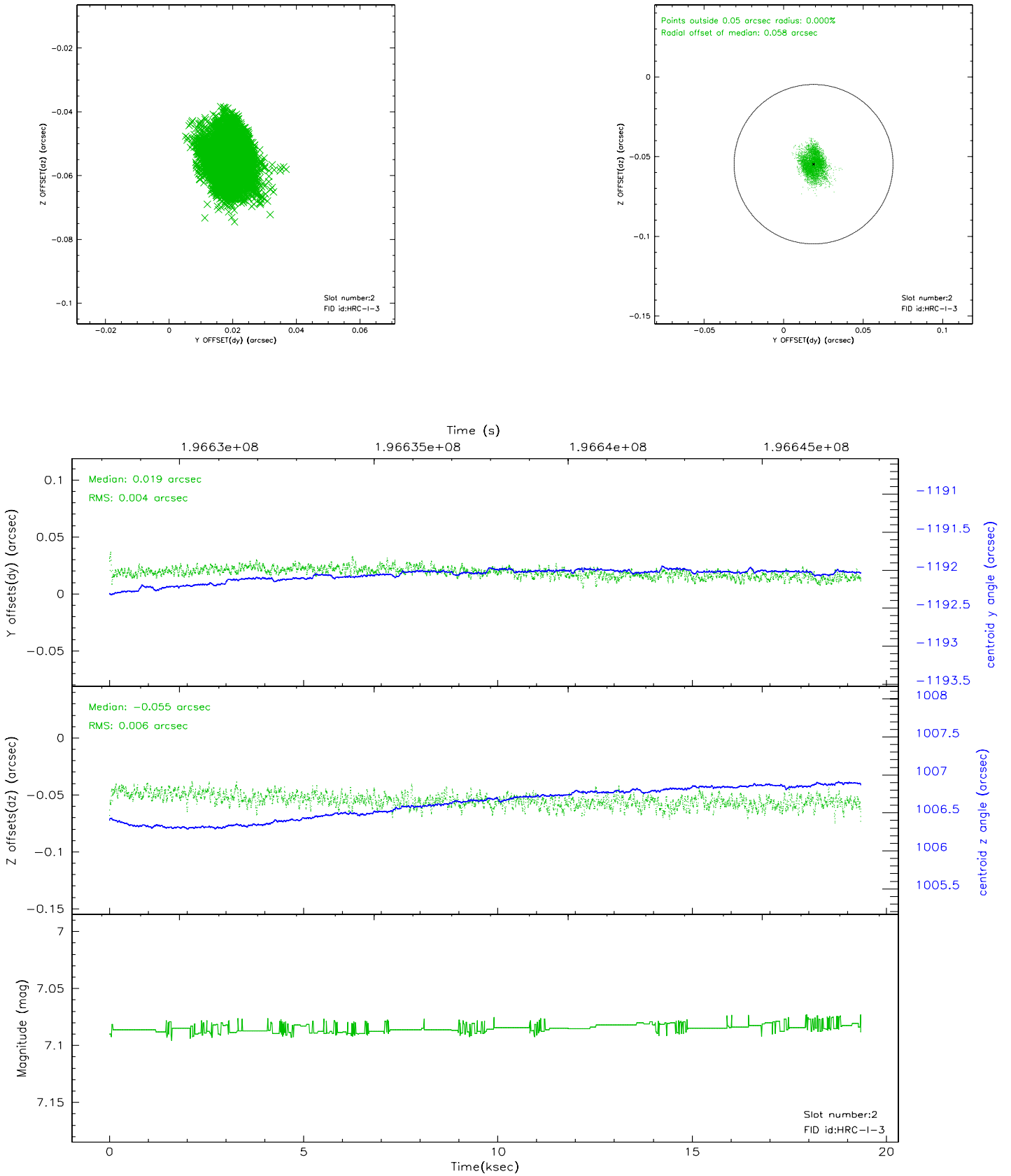
2.5.1 Slot 0



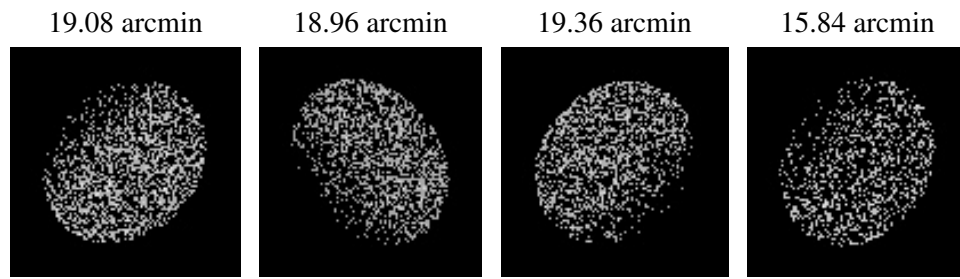
2.5.2 Slot 1



2.5.3 Slot 2



3 Point Sources



A Summary

A.1 Status

V&V Scientist	Beth Sundheim
V&V Date (YYYY-MM-DD)	2007.12.05
V&V Edition	1
V&V Disposition and Status	OK
V&V Charge Time	19.183

A.2 Comments

The current observation has been reprocessed as part of Repro III ('C' supplement) the purpose of which is to update all HRC-I ObsIDs since Jan 2000 to the latest calibrations available for that configuration. Specifically, we are updating the DEGAP solution and the Gain Maps applied. For more information see the Repro IIIC web page at:

<http://asc.harvard.edu/cda/repro3.html#IIIC>

and the associated links.