

V&V Reference Report

L2 ASCDS Version : 8.4.5

Observation 4927 - L2 Version 4
Chandra X-Ray Center

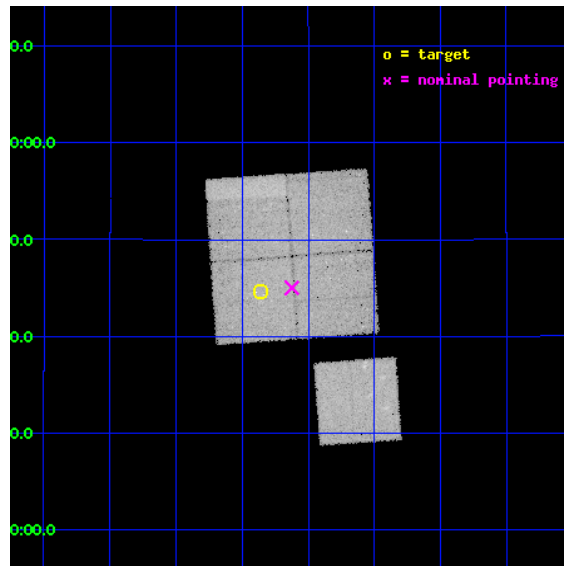
L2 Processing Date : Nov 30 2012

Contents

1	Front	2
2	OBI	3
2.1	OBI	3
2.1.1	Images	3
2.1.2	Bias	3
2.1.3	Parameters	4
2.1.4	Events	4
2.2	Compared Parameters	5
2.3	Aspect	6
2.4	Star Slots	9
2.4.1	Slot 3	9
2.4.2	Slot 4	10
2.4.3	Slot 5	11
2.4.4	Slot 6	12
2.4.5	Slot 7	13
2.5	FID Slots	14
2.5.1	Slot 0	14
2.5.2	Slot 1	15
2.5.3	Slot 2	16
A	Summary	17
A.1	Status	17
A.2	Comments	17

1 Front

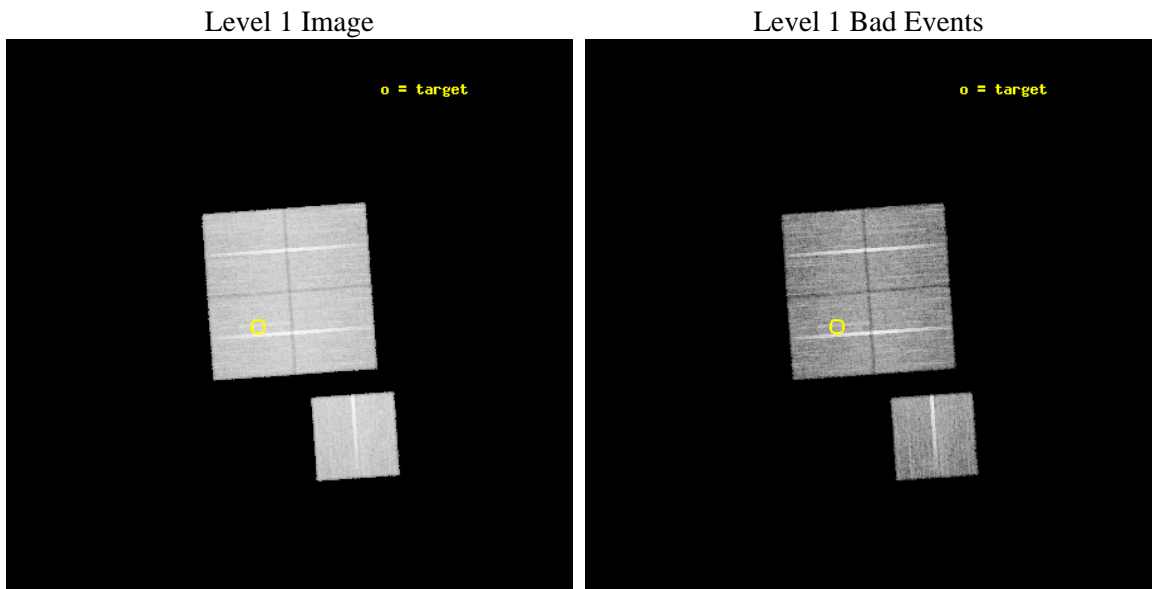
seq_num	800378	Sequence number
obs_id	4927	Observation id
title	Chandra snapshot survey of 10 distant clusters of galaxies	Proposa
observer	Dr. Stephen Murray	Principal investigator
object	CL1500+2244	Source name
dtcycle	0	
cycle	P	events from which exps? Prim/Second/Both
ra_targ	225.214583	Observer's specified target RA [deg]
dec_targ	22.744722	Observer's specified target Dec [deg]
ra_nom	225.15599030998	Nominal RA [deg]
dec_nom	22.750507715626	Nominal Dec [deg]
roll_nom	175.96557747103	Nominal Roll [deg]
revision	4	Processing version of data
ontime	20184.099961162	Sum of GTIs [s]
livetime	19920.379835851	Livetime [s]
ontime0	20180.958980918	Sum of GTIs [s]
ontime1	20180.958980918	Sum of GTIs [s]
ontime2	20184.099961162	Sum of GTIs [s]
ontime3	20184.099961162	Sum of GTIs [s]
ontime6	20180.958980888	Sum of GTIs [s]
l2events	155998	Number of level 2 events



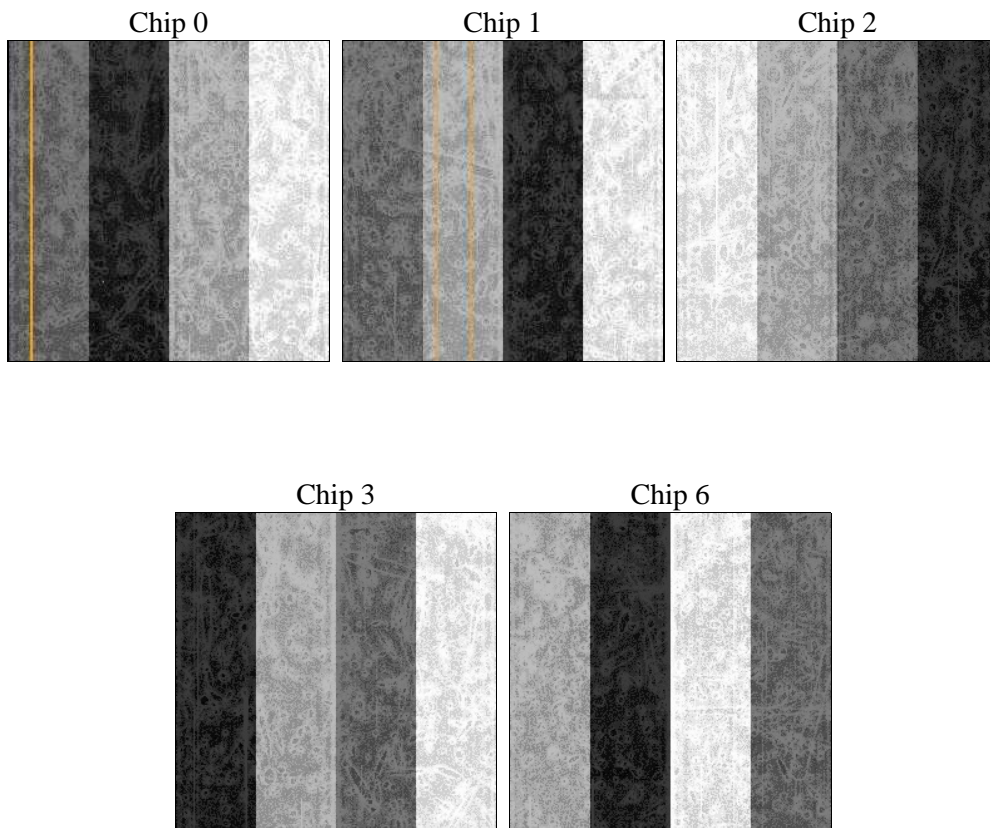
2 OBI

2.1 OBI

2.1.1 Images



2.1.2 Bias



2.1.3 Parameters

obi_num	0	Obi number	sched_exp_time	19999.681000	[s] Scheduled observation exposure time
ascdsver	8.4.5	Processing system revision	ontime	20184.099961162	Sum of GTIs [s]
caldsver	4.5.2	 	ontime0	20180.958980918	Sum of GTIs [s]
date	2012-11-30T16:59:18	Date and time of file creation	ontime1	20180.958980918	Sum of GTIs [s]
revision	4	Processing version of data	ontime2	20184.099961162	Sum of GTIs [s]
			ontime3	20184.099961162	Sum of GTIs [s]
			ontime6	20180.958980888	Sum of GTIs [s]
			l1events	759611	Number of level 1 events

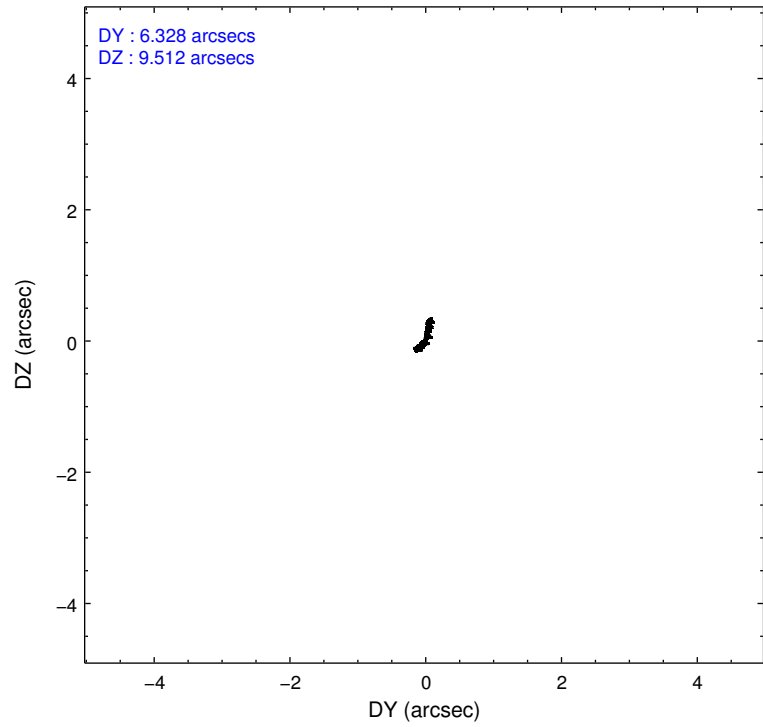
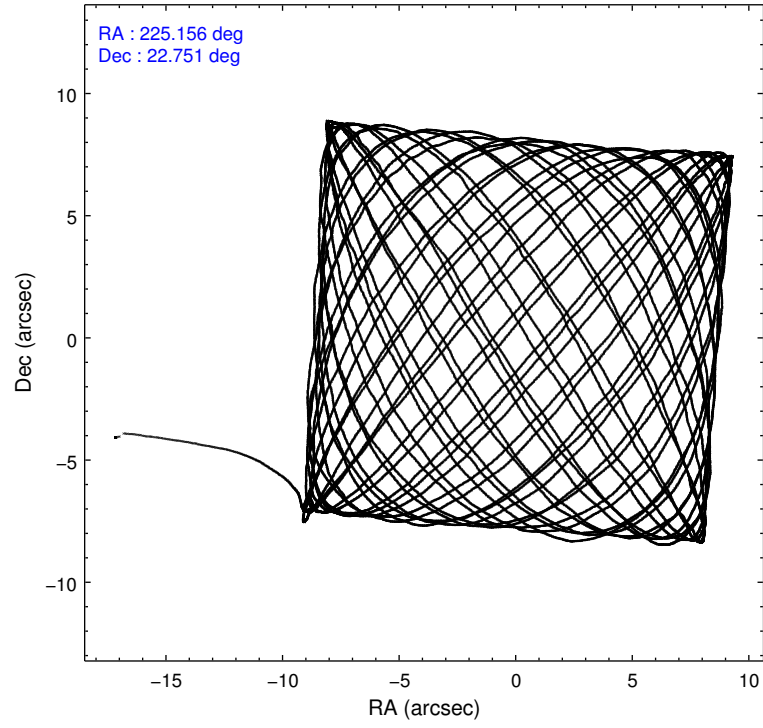
2.1.4 Events

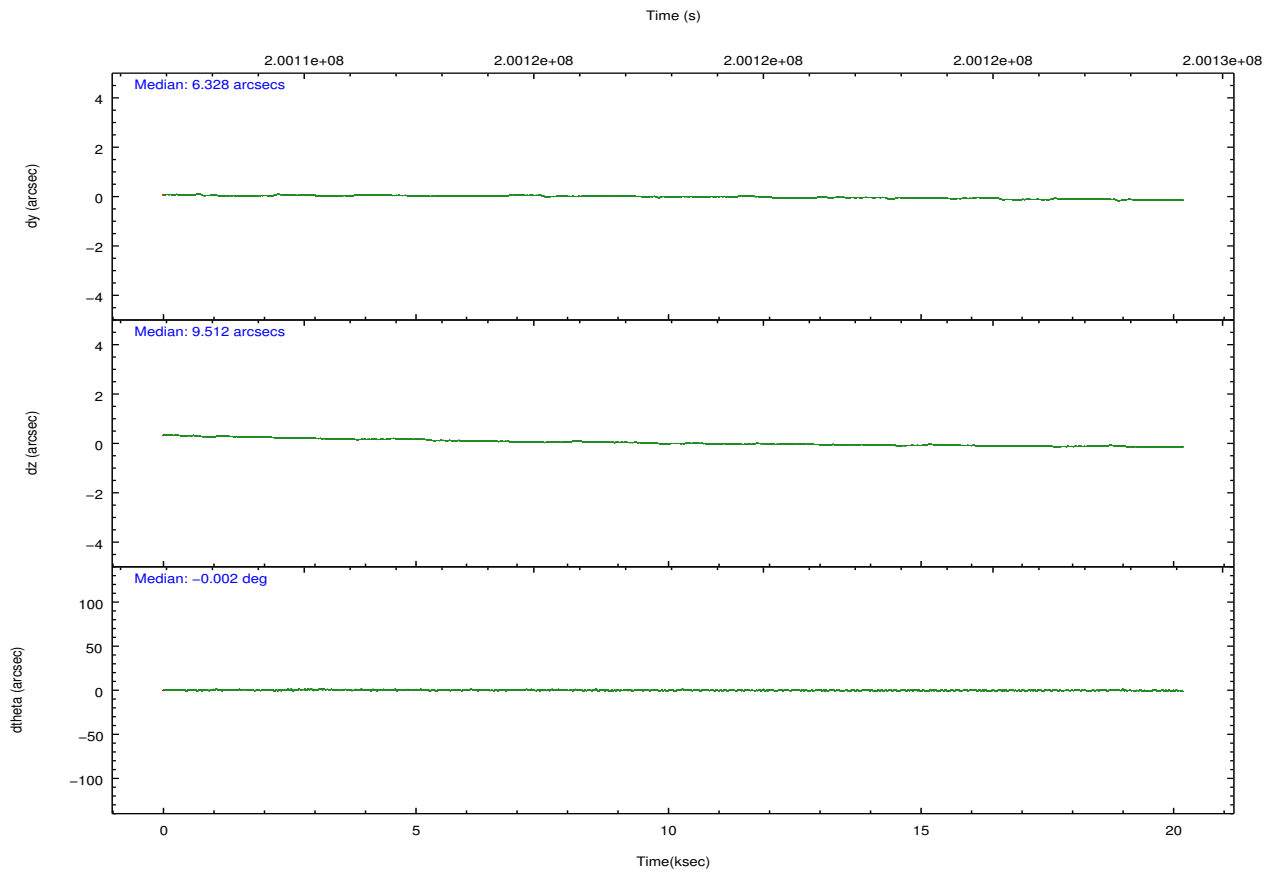
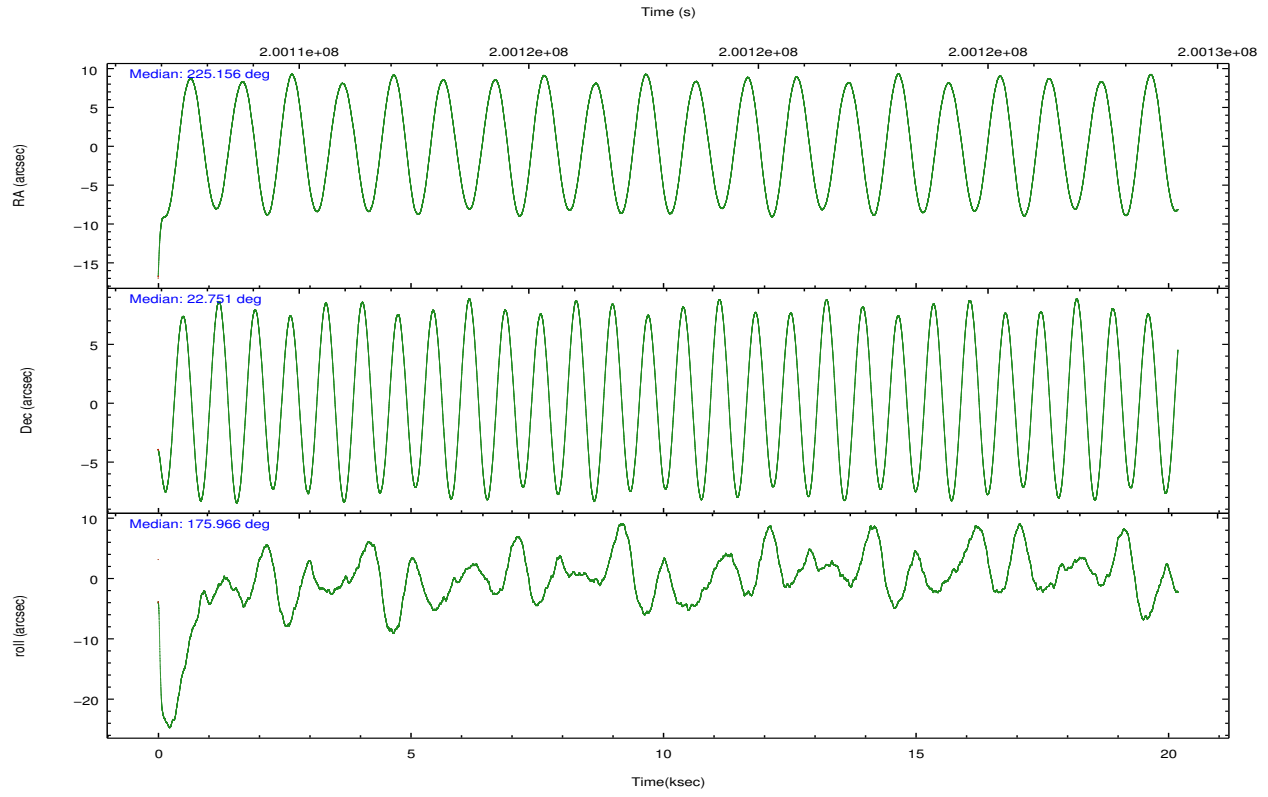
	ccd 0	ccd 1	ccd 2	ccd 3	ccd 6		ccd 0	ccd 1	ccd 2	ccd 3	ccd 6
level 1 events	142705	149036	157365	154020	156485	grade 0 events	18866	23386	19718	19914	23522
rejected events	110546	111353	124997	121328	118680		13%	15%	12%	12%	15%
rejected %	77%	74%	79%	78%	75%	grade 1 events	131	135	151	124	130
							0%	0%	0%	0%	0%
						grade 2 events	5623	6275	5488	5294	5762
							3%	4%	3%	3%	3%
						grade 3 events	2409	2586	2304	2335	2510
							1%	1%	1%	1%	1%
						grade 4 events	2266	2556	2287	2349	2504
							1%	1%	1%	1%	1%
						grade 5 events	4609	4850	4326	5192	5136
							3%	3%	2%	3%	3%
						grade 6 events	4427	4693	4114	4334	5278
							3%	3%	2%	2%	3%
						grade 7 events	104374	104555	118977	114478	111643
							73%	70%	75%	74%	71%

2.2 Compared Parameters

Parameter	Planned	Actual	Parameter	Planned	Actual
Instrument	ACIS	ACIS	Obspar format version number	7	7
Detector	ACIS-01236	ACIS-01236	Obspar file type	PREDICTED	ACTUAL
Grating	NONE	NONE	Obspar update status	NONE	UPDATED
Data mode	VFAINT	VFAINT	Number of optional ACIS chips dropped	0	0
Observation mode	POINTING	POINTING	On-chip summing requested	N	N
[deg] Pointing RA	225.182674	225.1559903099807	Subarray requested	NONE	NONE
[deg] Pointing Dec	22.762629	22.75050771562567	Alternating exposures requested	N	N
[deg] Pointing Roll	175.746552	175.9655774710318	[s] Primary exposure time	0.000000	3.1
[mm] SIM focus pos	-0.782348	-0.7809083437167272			
[mm] SIM defocus	0	0.001439871863259334			
[mm] SIM translation stage pos	-225.840463	-225.8433433320239			
[mm] SIM translation stage offset	-7.752	-7.749109670905796			
[s] Observation start time (MET)	200108120.184000	200106641.22142			
Observation start date	2004-05-05T01:34:16	2004-05-05T01:10:41			
[s] Observation end time (MET)	200128120.184000	200128434.77239			
Observation end date	2004-05-05T07:07:36	2004-05-05T07:13:54			
Read mode	TIMED	TIMED			

2.3 Aspect



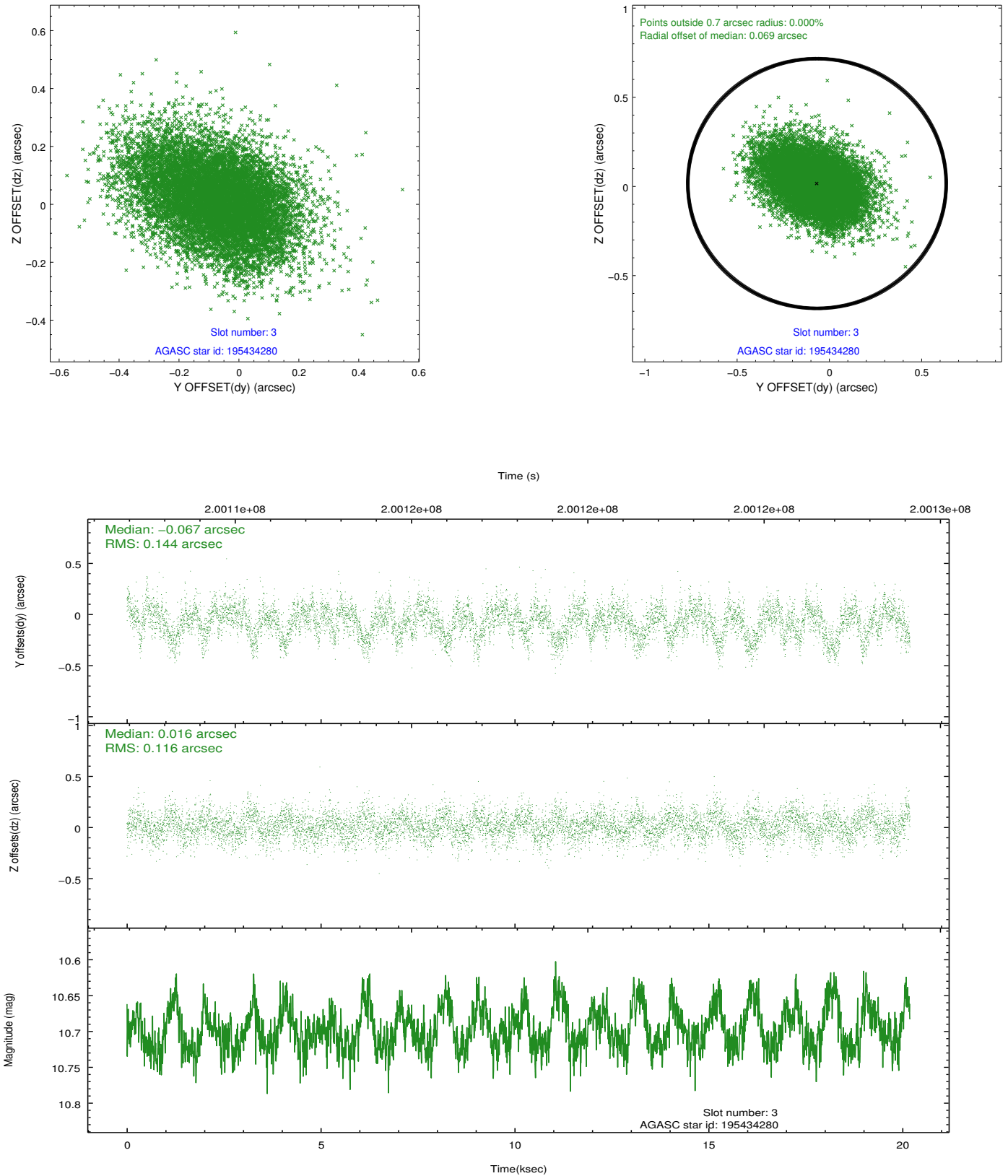


Slot Statistics

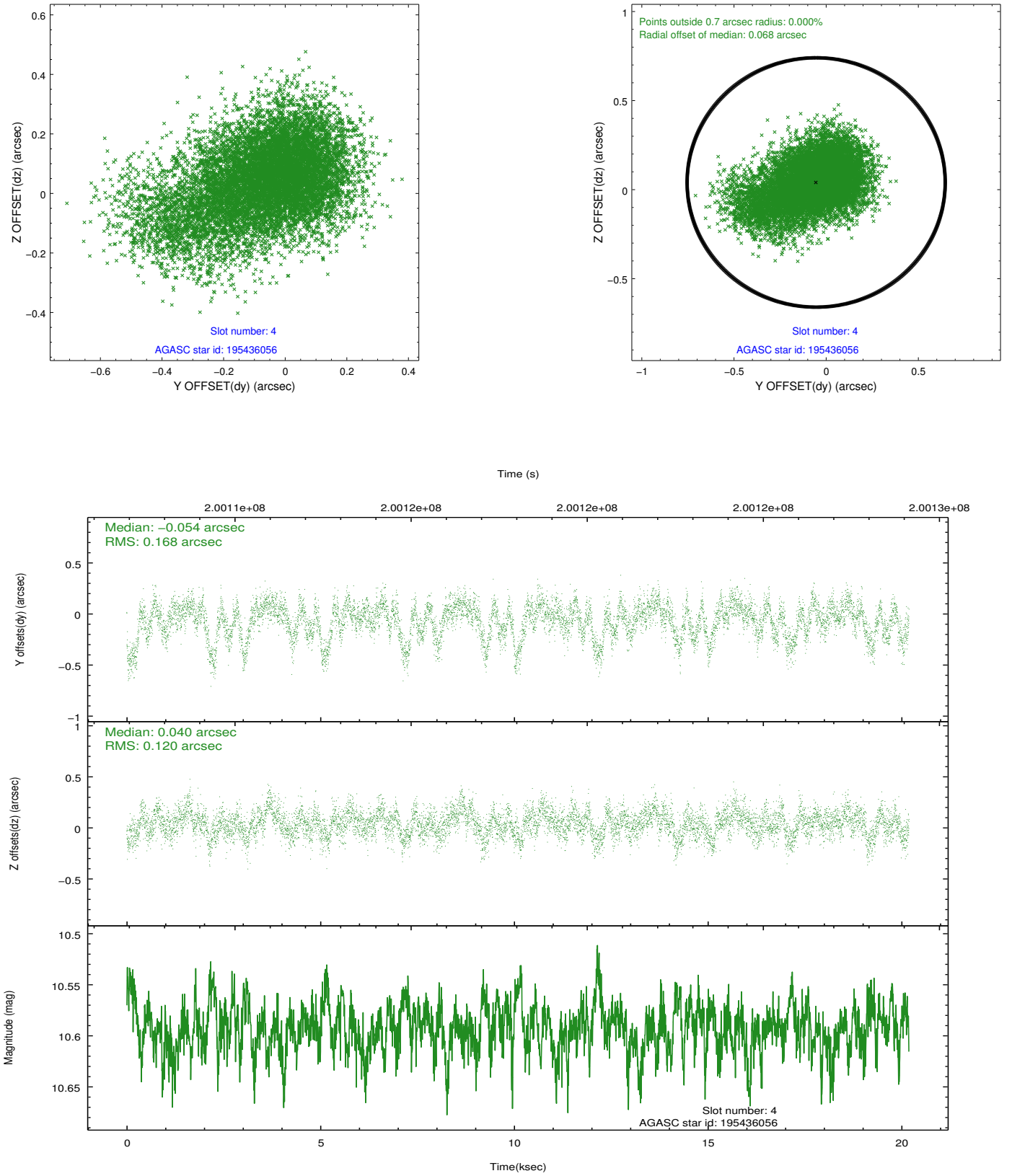
slot	status	id	mag	n_pts	med_dy	med_dz	dr1	dr2	ra	dec	mean_y	mean_z
0	FID	ACIS-I-1	7.23	4925	0.085	-0.071	0.007	0.011	0.000000	0.000000	933.33	-992.15
1	FID	ACIS-I-5	7.22	4925	-0.222	0.078	0.007	0.011	0.000000	0.000000	-1814.99	905.35
2	FID	ACIS-I-6	7.25	4924	0.047	0.064	0.008	0.012	0.000000	0.000000	398.63	1550.06
3	GUIDE	195434280	10.70	9827	-0.067	0.016	0.195	0.326	225.697331	22.305754	-1831.05	1510.46
4	GUIDE	195436056	10.59	9832	-0.054	0.040	0.210	0.380	225.528542	22.448947	-1231.45	1039.84
5	GUIDE	264380256	9.37	9848	-0.116	0.075	0.108	0.168	225.047020	22.669639	424.41	367.41
6	GUIDE	264380752	10.23	9841	0.082	-0.026	0.196	0.306	224.720923	22.632014	1495.59	580.51
7	GUIDE	264378848	10.35	9837	0.185	-0.101	0.162	0.260	225.024041	22.696682	508.29	275.80

2.4 Star Slots

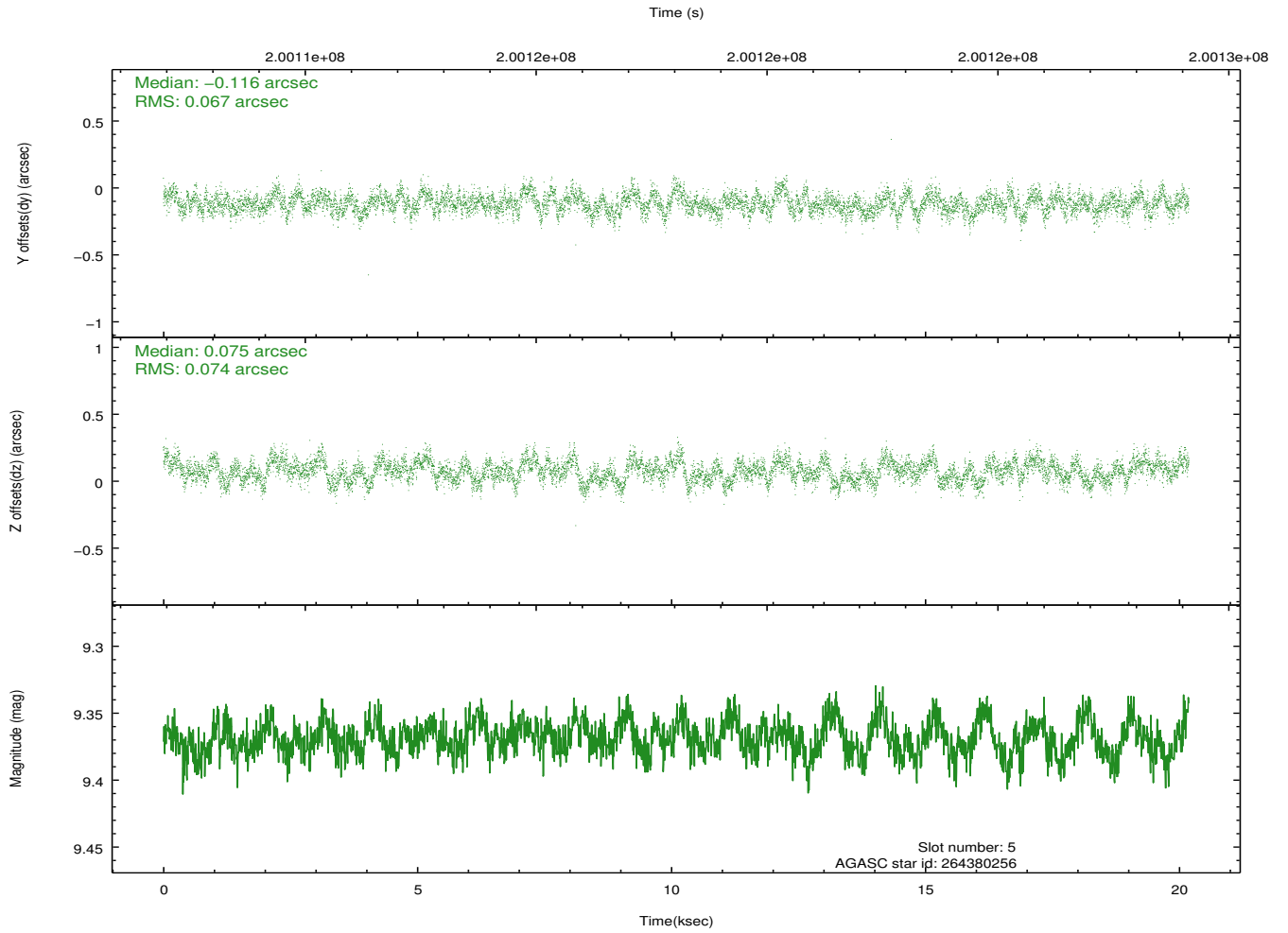
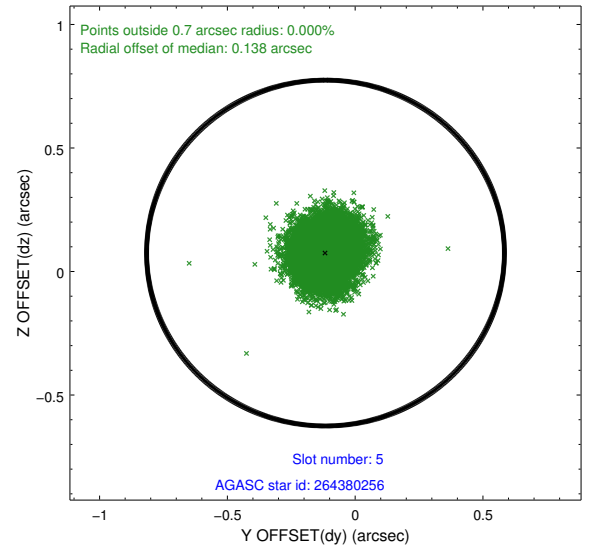
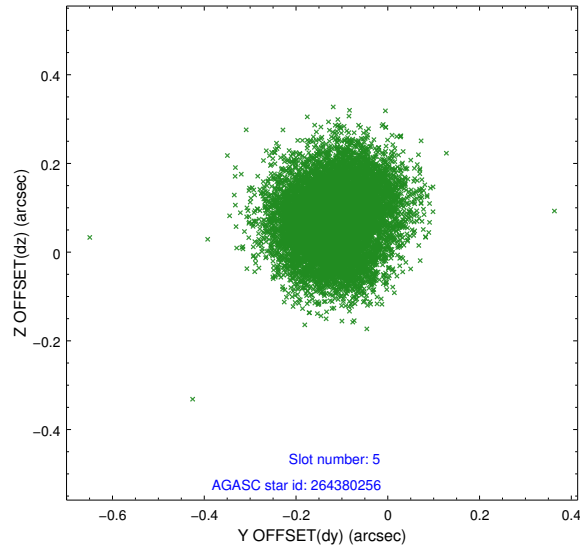
2.4.1 Slot 3



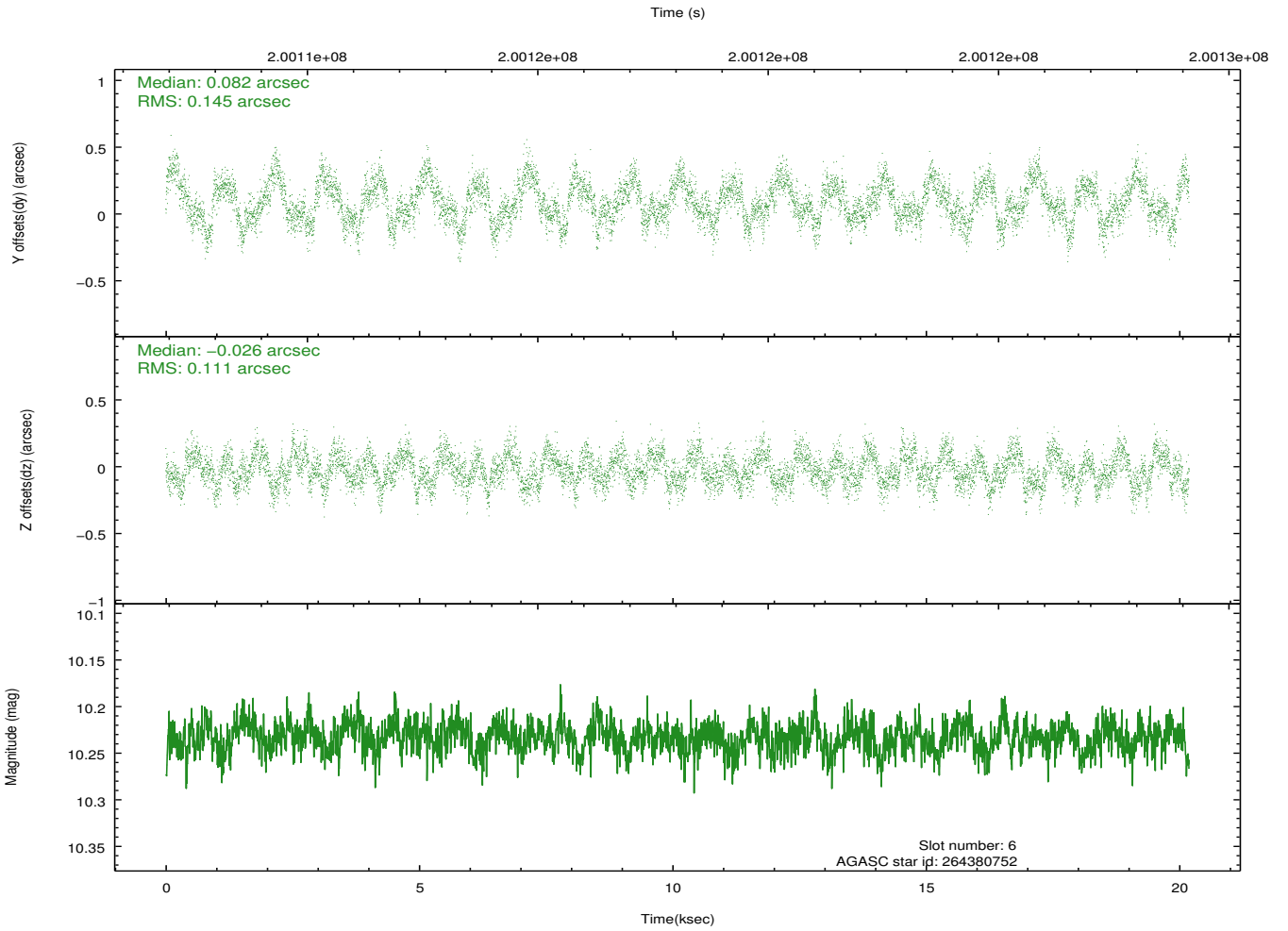
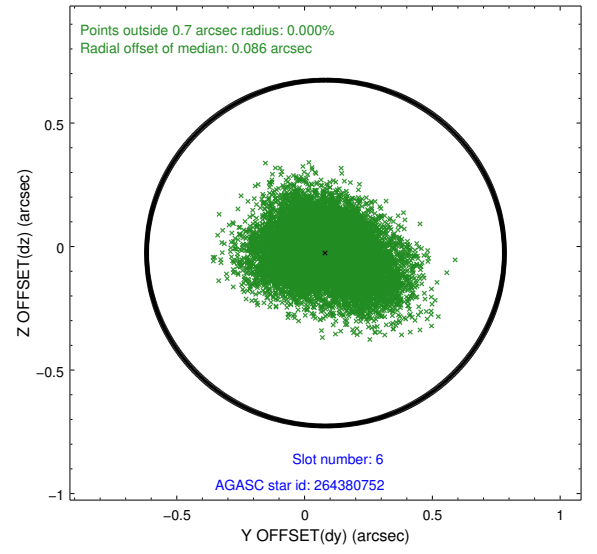
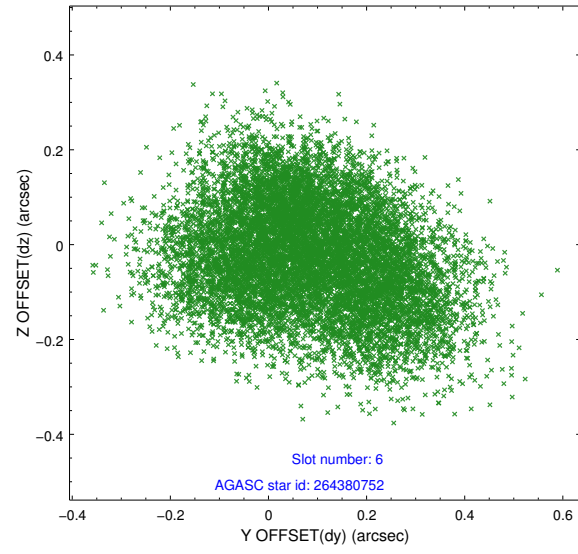
2.4.2 Slot 4



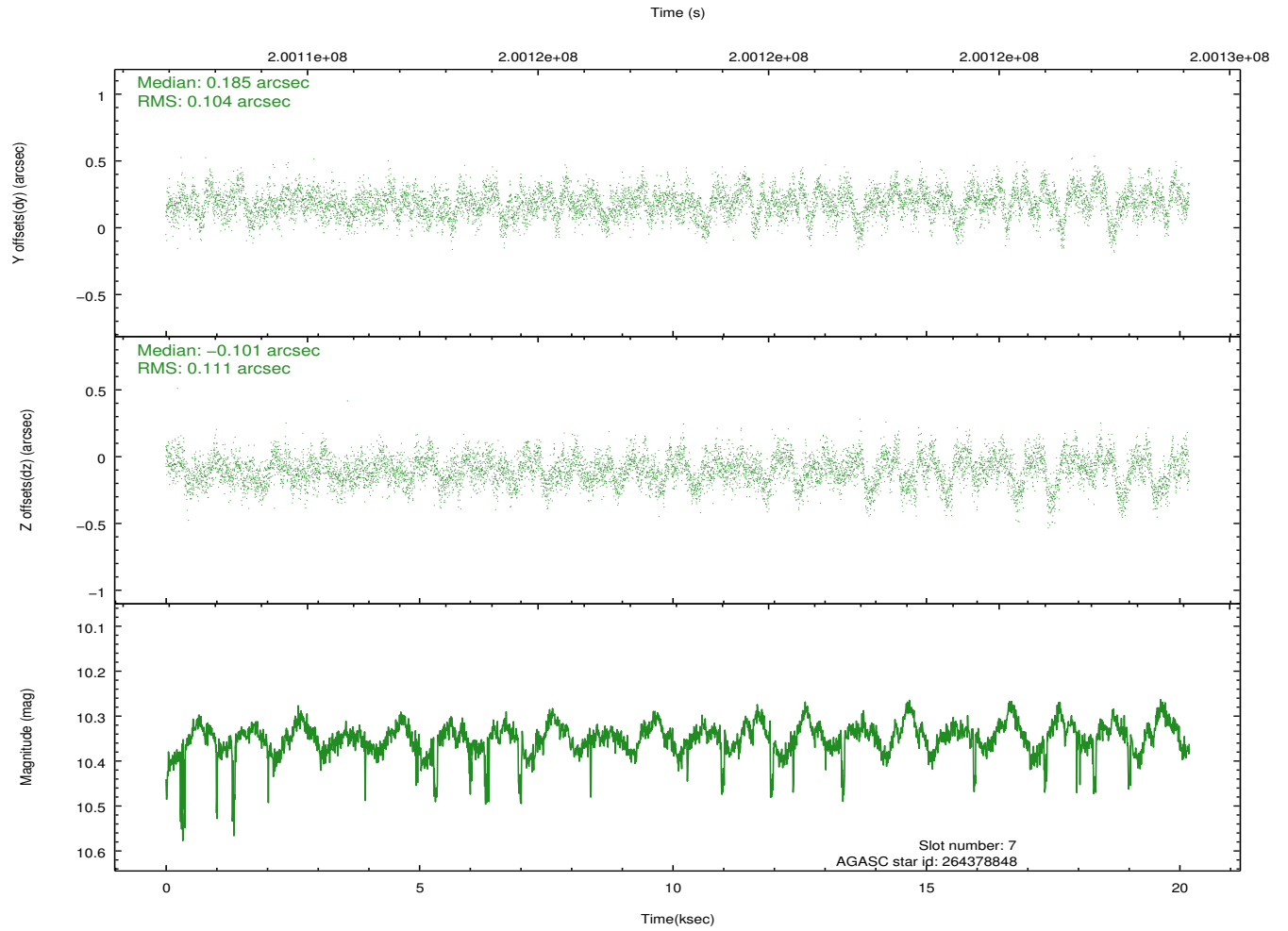
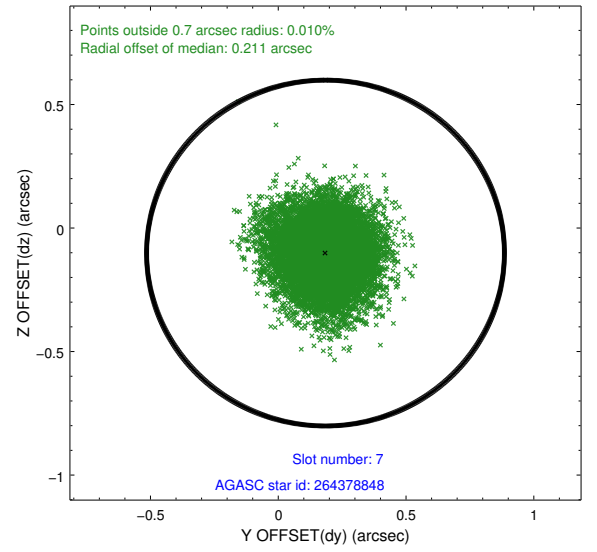
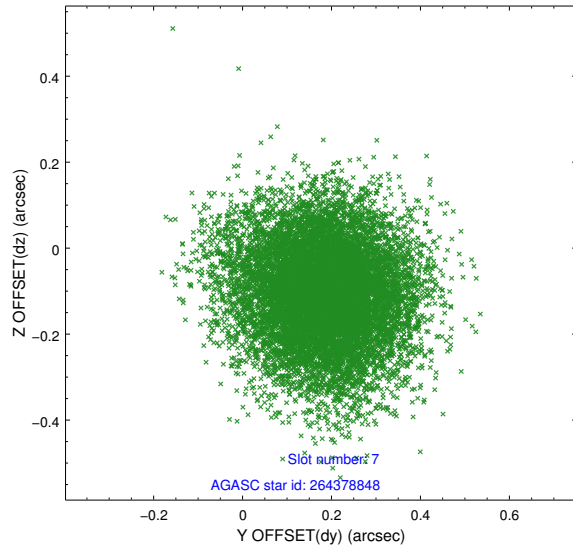
2.4.3 Slot 5



2.4.4 Slot 6

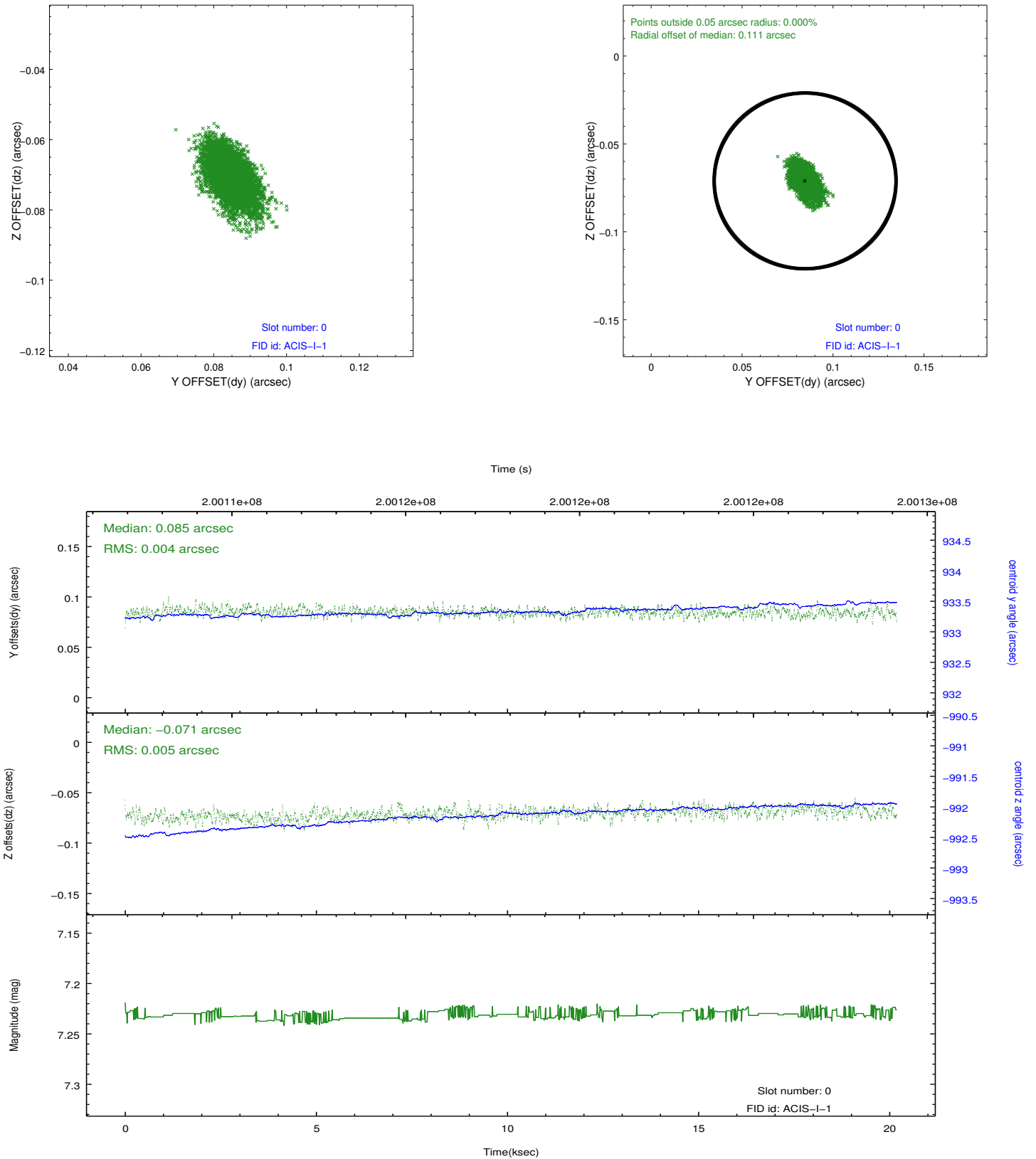


2.4.5 Slot 7

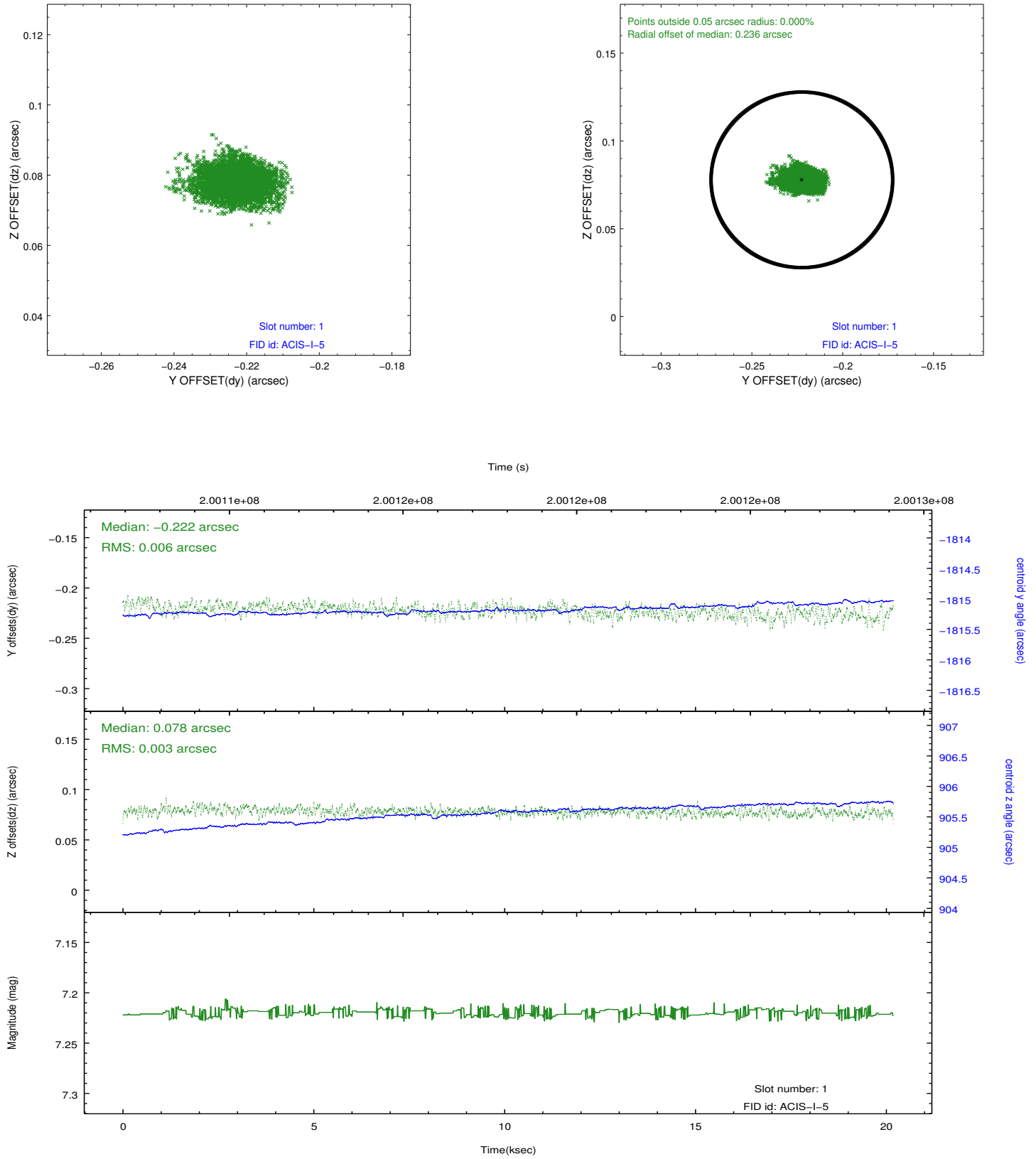


2.5 FID Slots

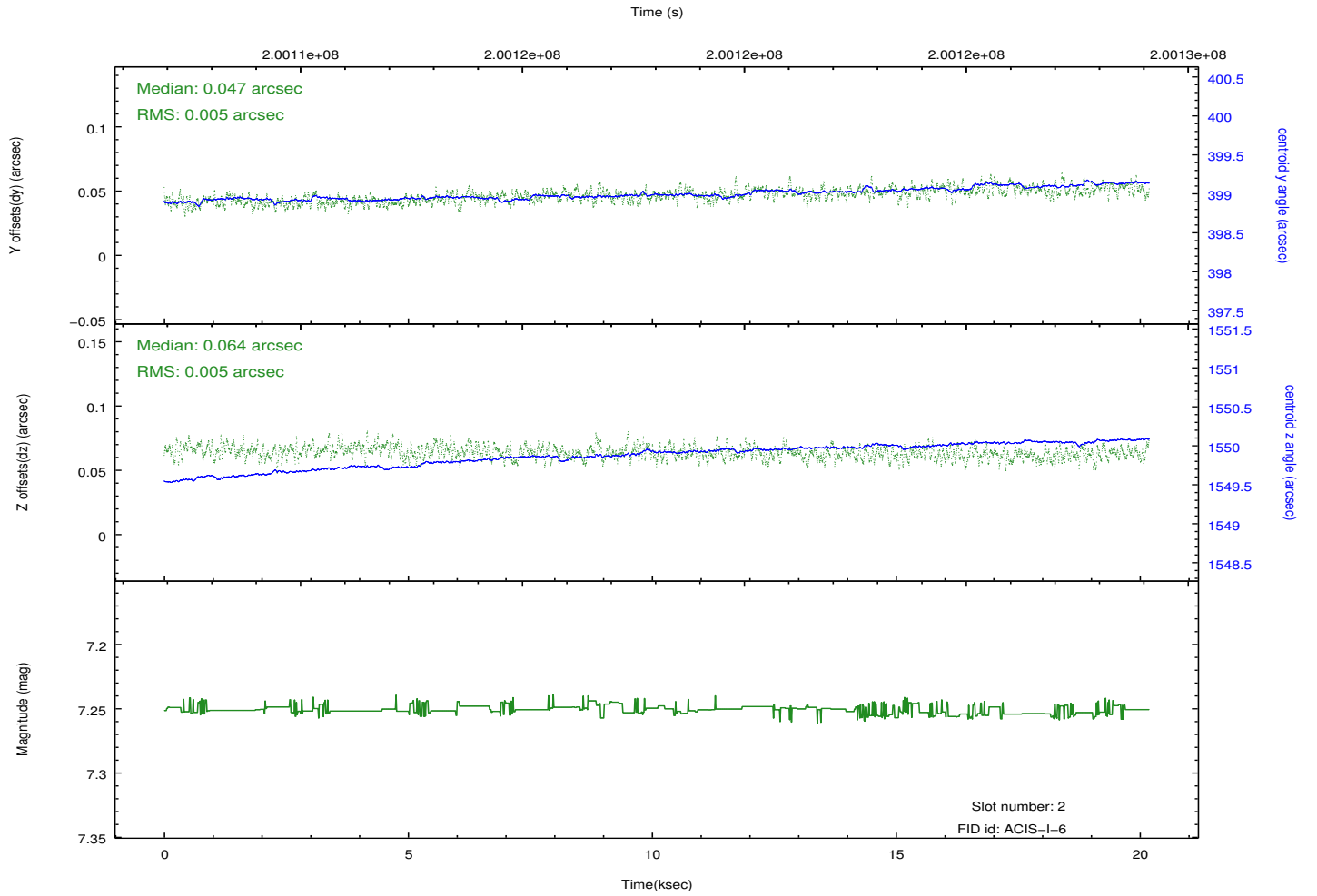
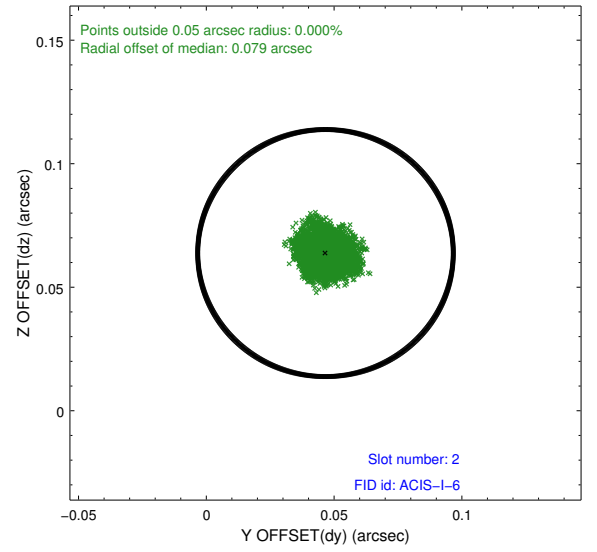
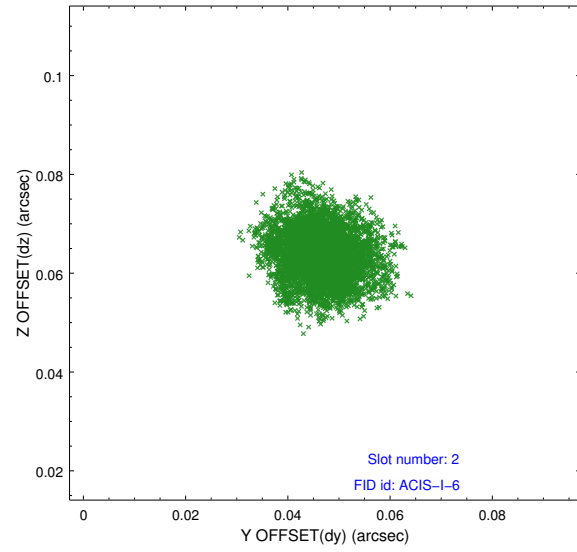
2.5.1 Slot 0



2.5.2 Slot 1



2.5.3 Slot 2



A Summary

A.1 Status

V&V Scientist	Jen Lauer
V&V Date (YYYY-MM-DD)	2012.12.14
V&V Edition	1
V&V Disposition and Status	OK
V&V Charge Time	20.184

A.2 Comments