

V&V Reference Report

L2 ASCDS Version : 7.6.7.2

Observation 4907 - L2 Version 001
Chandra X-Ray Center

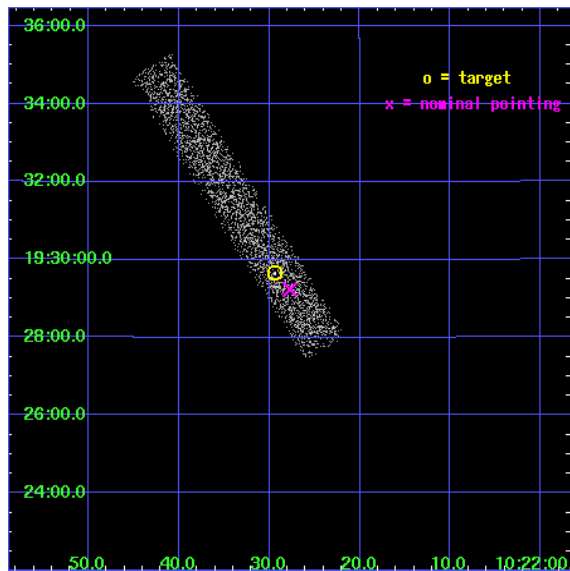
L2 Processing Date : May 27 2006

Contents

1	Front	2
2	OBI	3
2.1	OBI	3
2.1.1	Images	3
2.1.2	Bias	3
2.1.3	Parameters	4
2.1.4	Events	4
2.2	Compared Parameters	5
2.3	Aspect	6
2.4	Star Slots	9
2.4.1	Slot 3	9
2.4.2	Slot 4	10
2.4.3	Slot 5	11
2.4.4	Slot 6	12
2.4.5	Slot 7	13
2.5	FID Slots	14
2.5.1	Slot 0	14
2.5.2	Slot 1	15
2.5.3	Slot 2	16
3	Point Sources	17
A	Summary	18
A.1	Status	18
A.2	Comments	18

1 Front

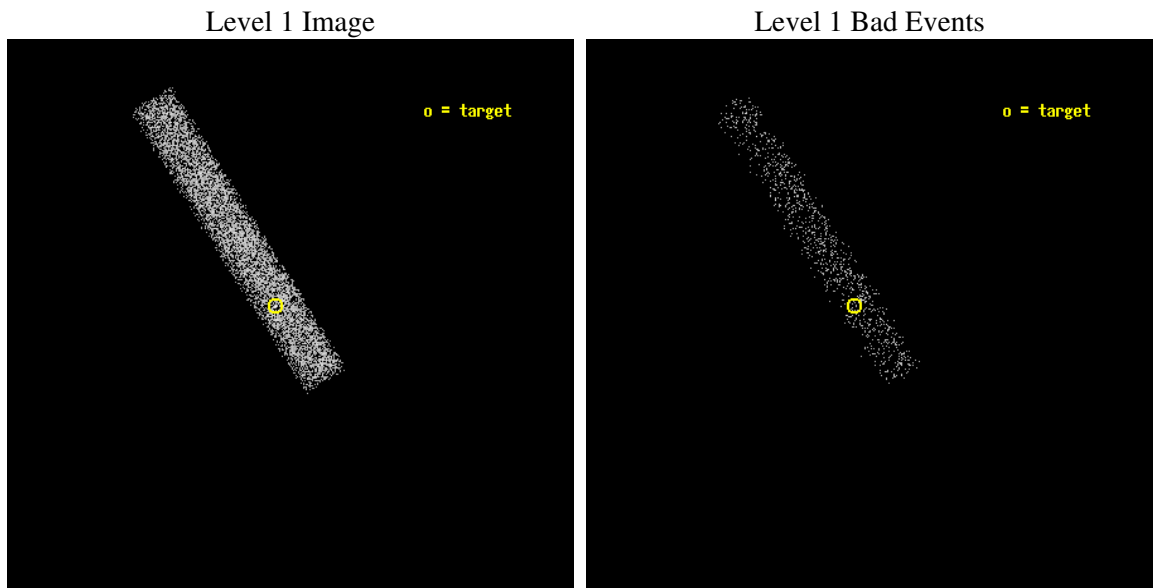
seq_num	700988
obs_id	4907
title	The X-ray Spectra of Red Quasars
observer	Dr Mark Lacy
object	FTM 1022+1929
dtcycle	0
cycle	P
ra_targ	155.6225
dec_targ	19.494167
ra_nom	155.6156057349
dec_nom	19.487114467178
roll_nom	237.62782977328
revision	2
ontime	7284.800108552
livetime	6606.9291751787
ontime7	7284.800108552
l2events	3635



2 OBI

2.1 OBI

2.1.1 Images



2.1.2 Bias

Chip 7



2.1.3 Parameters

obi_num	0
ascdsver	7.6.7.2
caldbver	3.2.2
date	2006-05-27T05:36:56
revision	2

sched_exp_time	7100.000000
ontime	8727.2195833623
ontime7	8727.2195833623
l1events	10896

2.1.4 Events

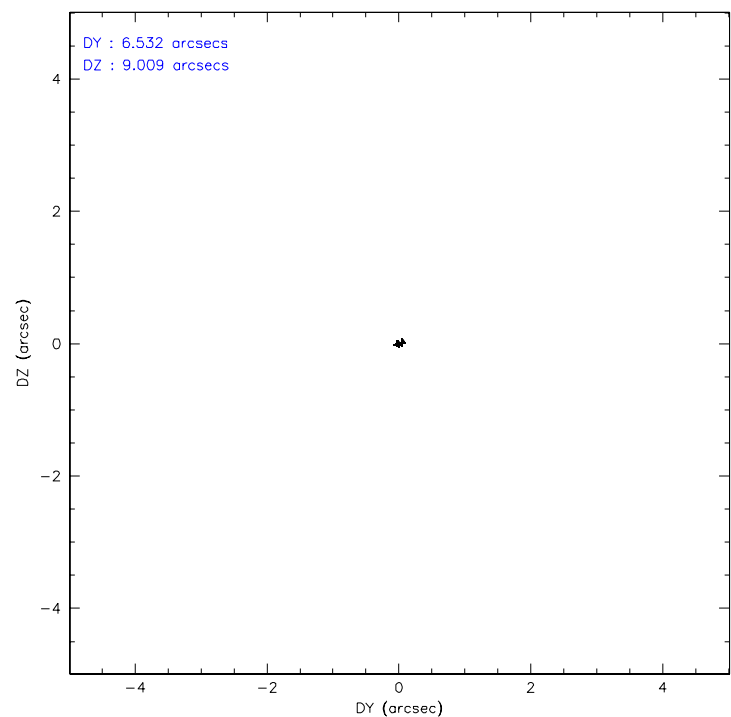
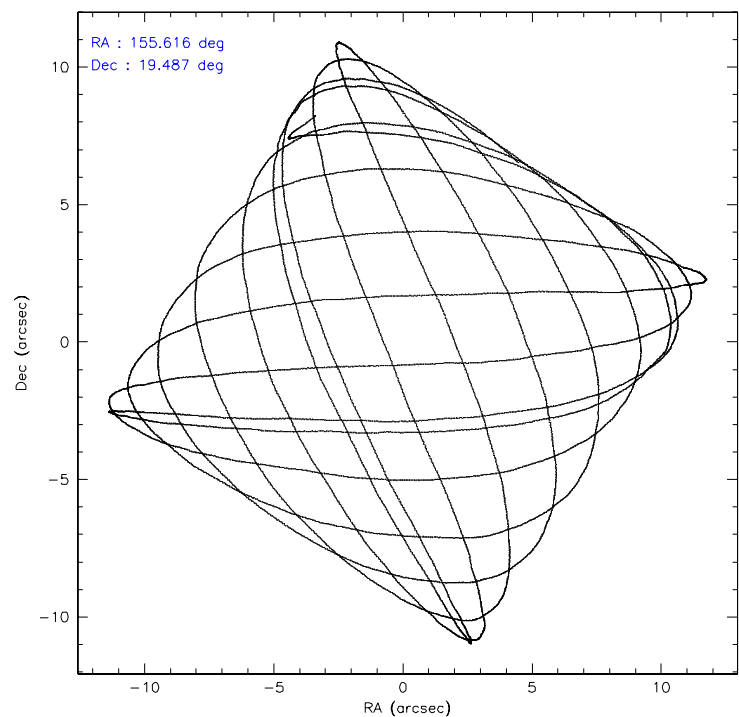
	ccd 7
level 1 events	10896
rejected events	7113
rejected %	65%

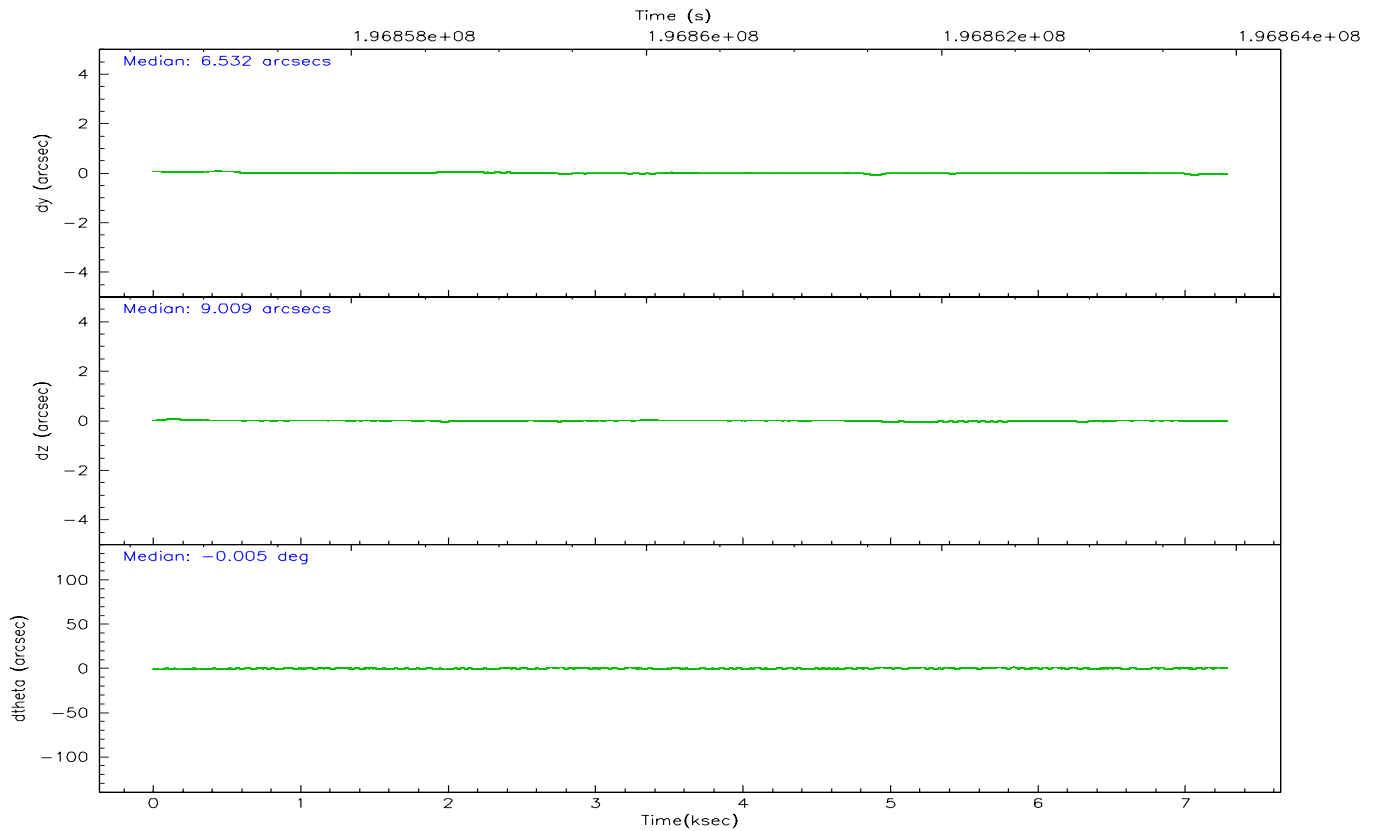
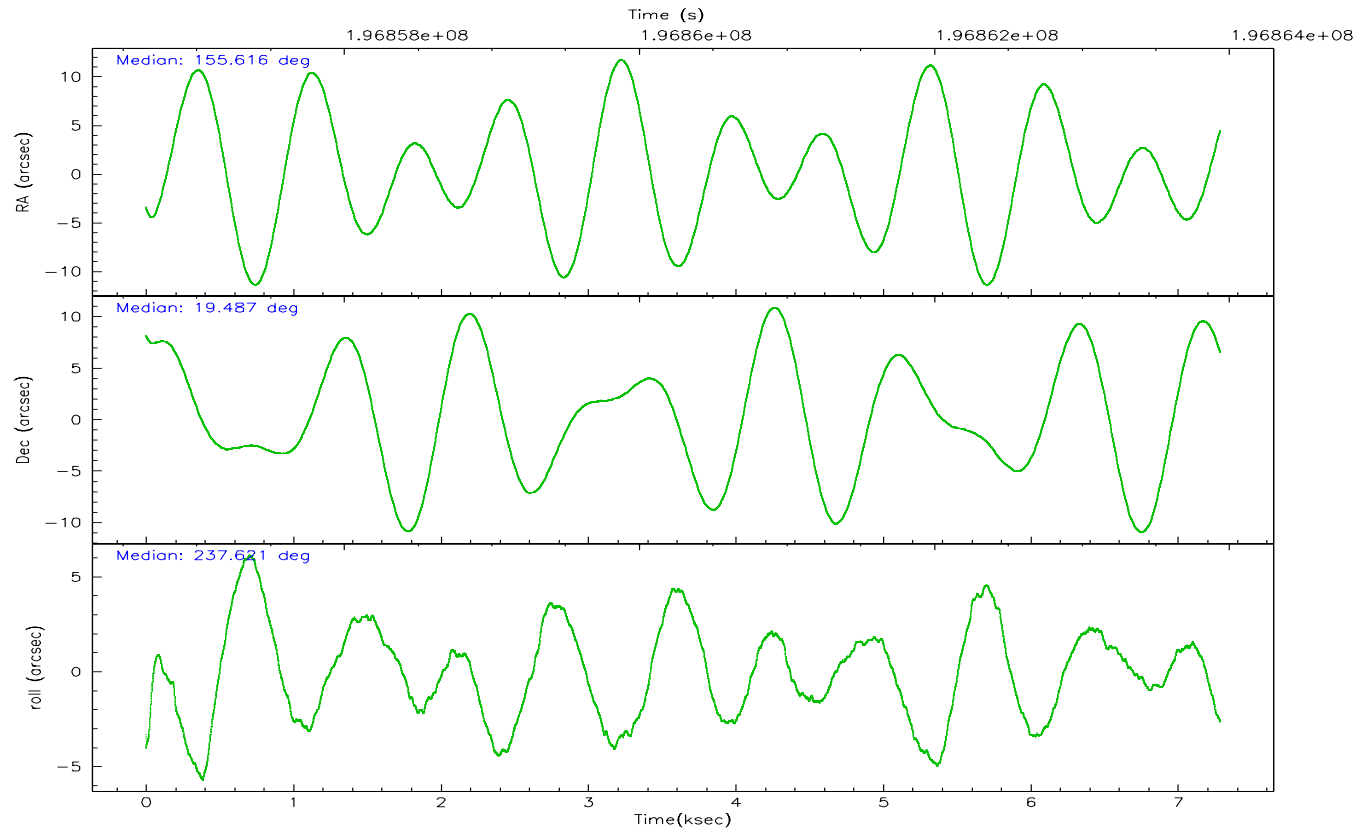
	ccd 7
grade 0 events	339
	3%
grade 1 events	9
	0%
grade 2 events	1069
	9%
grade 3 events	467
	4%
grade 4 events	459
	4%
grade 5 events	757
	6%
grade 6 events	2309
	21%
grade 7 events	5487
	50%

2.2 Compared Parameters

Parameter	Planned	Actual	Parameter	Planned	Actual
Instrument	ACIS	ACIS	Obspar format version number	6	6
Detector	ACIS-7	ACIS-7	Obspar file type	PREDICTED	ACTUAL
Grating	NONE	NONE	Obspar update status	NONE	UPDATED
Data mode	FAINT	FAINT	On-chip summing requested	N	N
Observation mode	POINTING	POINTING	Subarray requested	1/8	1/8
Pointing RA	155.616379	155.6156057349021	Subarray start row	0	449
Pointing Dec	19.514254	19.48711446717752	Subarray row count	1024	128
Pointing Roll	237.470938	237.6278297732759	Alternating exposures requested	N	N
SIM focus pos (mm)	-0.684267	-0.6828225247311905	Primary exposure time	0.000000	0.4
SIM defocus (mm)	0	0.001444936568705701			
SIM translation stage pos (mm)	-190.132523	-190.1400660498719			
SIM translation stage offset (mm)	0	0.00754346686406393			
Observation start time	196856840.184000	196855213.97828			
Observation start date	2004-03-28T10:26:16	2004-03-28T10:00:13			
Observation end time	196863940.184000	196864564.02869			
Observation end date	2004-03-28T12:24:36	2004-03-28T12:36:04			
Read mode	TIMED	TIMED			

2.3 Aspect



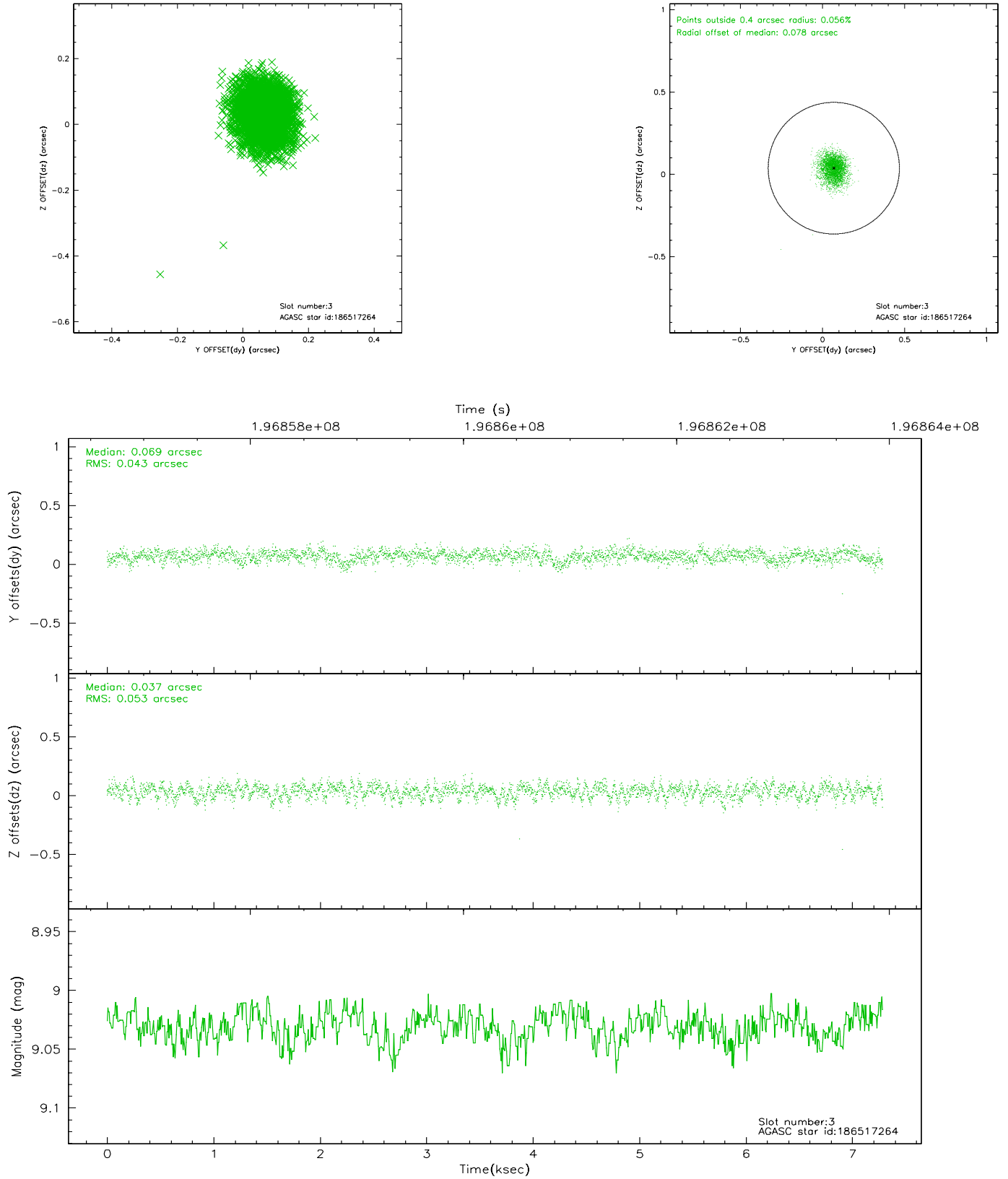


Slot Statistics

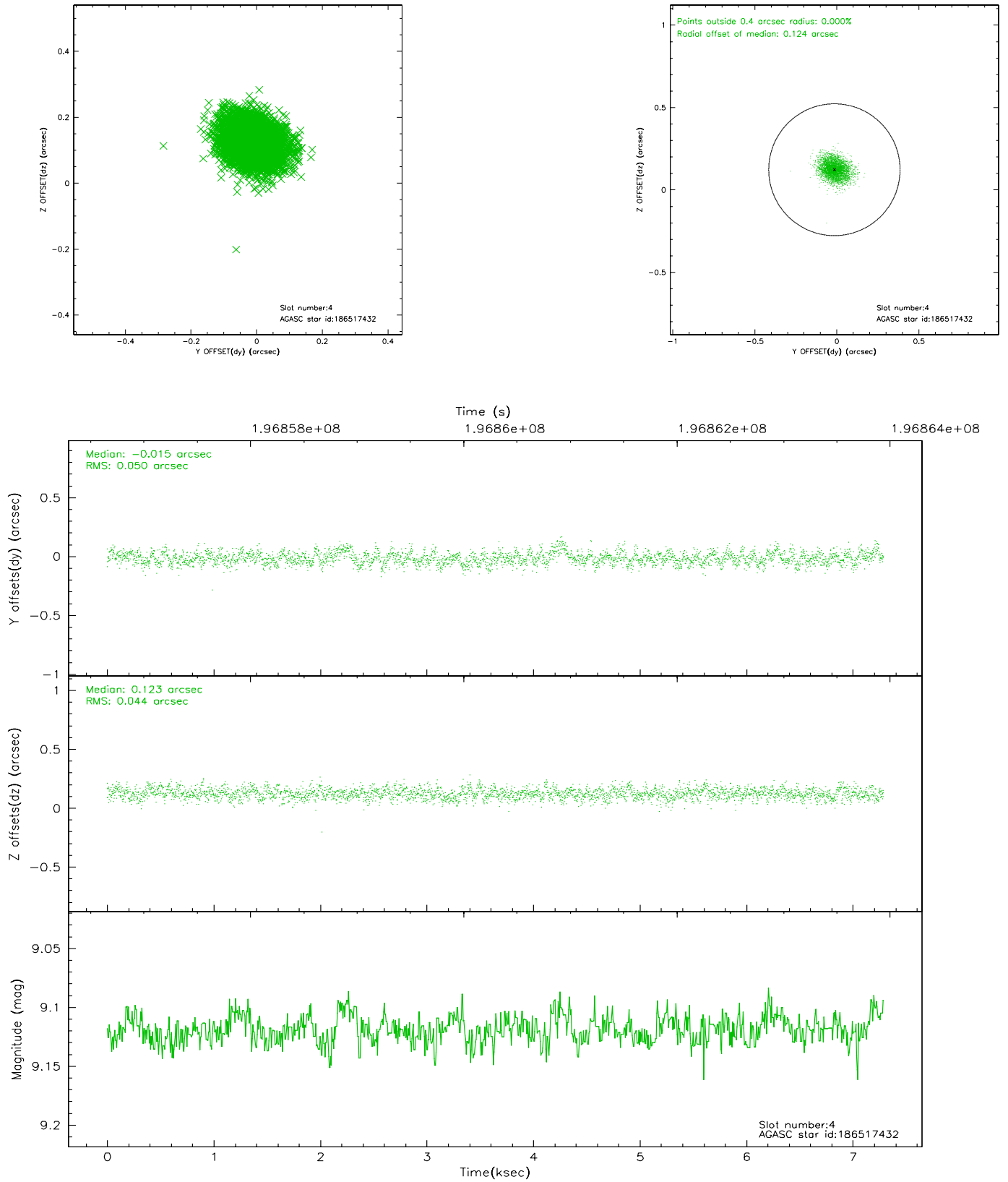
slot	status	id	mag	n_pts	med_dy	med_dz	dr1	dr2	ra	dec	mean_y	mean_z
0	FID	ACIS-S-1	7.19	1777	0.023	0.008	0.006	0.011	0.000000	0.000000	936.76	-1725.86
1	FID	ACIS-S-5	7.24	1777	-0.045	0.028	0.006	0.011	0.000000	0.000000	-1811.84	170.95
2	FID	ACIS-S-6	7.35	1777	0.001	-0.024	0.007	0.012	0.000000	0.000000	401.48	815.71
3	GUIDE	186517264	9.03	3554	0.069	0.037	0.071	0.118	155.474034	19.793179	-586.55	-946.41
4	GUIDE	186517432	9.12	3553	-0.015	0.123	0.071	0.115	155.977538	19.585156	-874.60	894.76
5	GUIDE	186517504	8.29	3555	0.083	-0.058	0.062	0.101	155.199091	19.538995	685.36	-1241.96
6	GUIDE	186519112	7.02	3555	-0.014	0.003	0.056	0.092	155.746796	19.130951	925.33	1115.95
7	GUIDE	186915152	8.63	3553	-0.121	-0.105	0.067	0.107	155.481319	20.053598	-1390.76	-1428.91

2.4 Star Slots

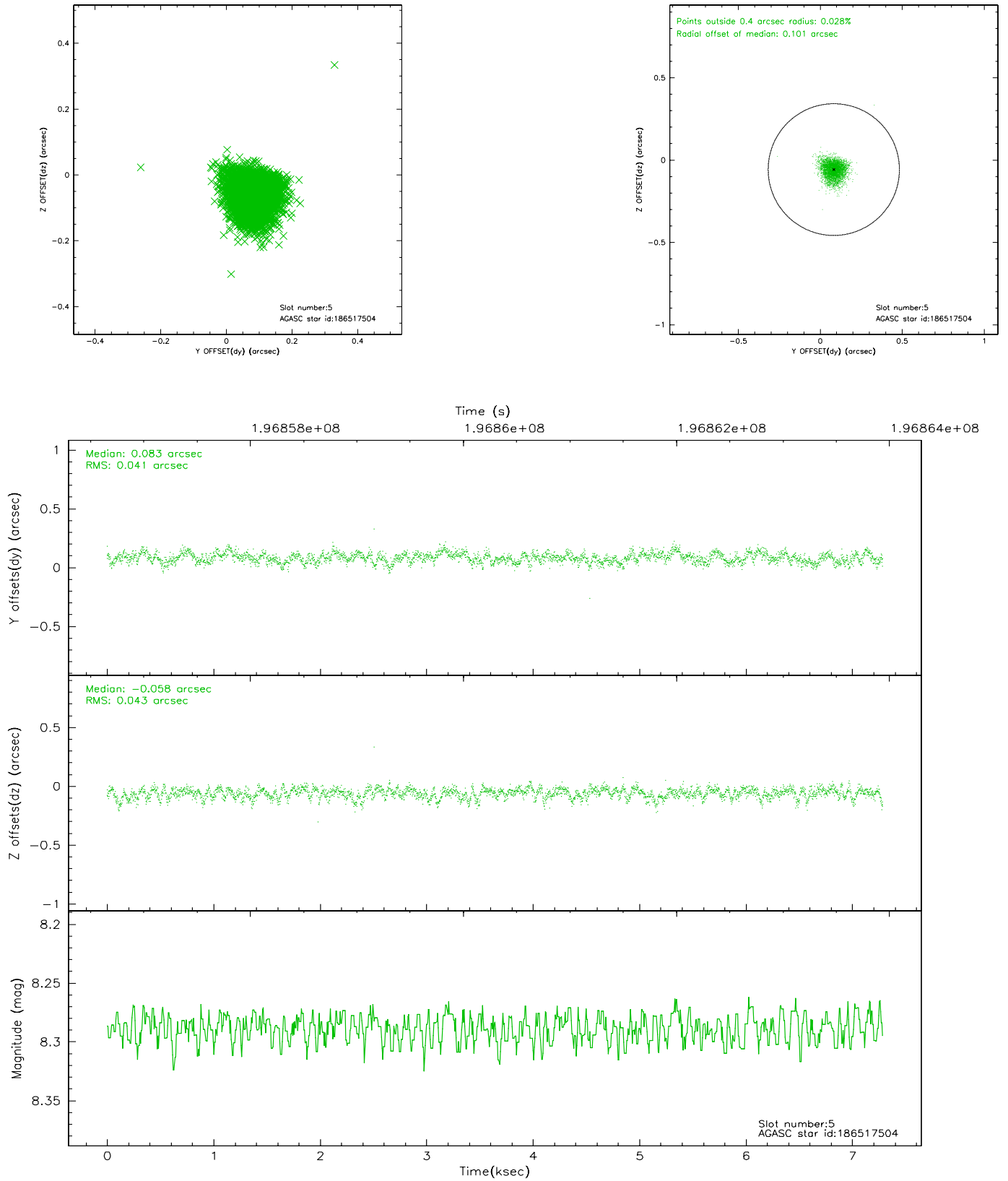
2.4.1 Slot 3



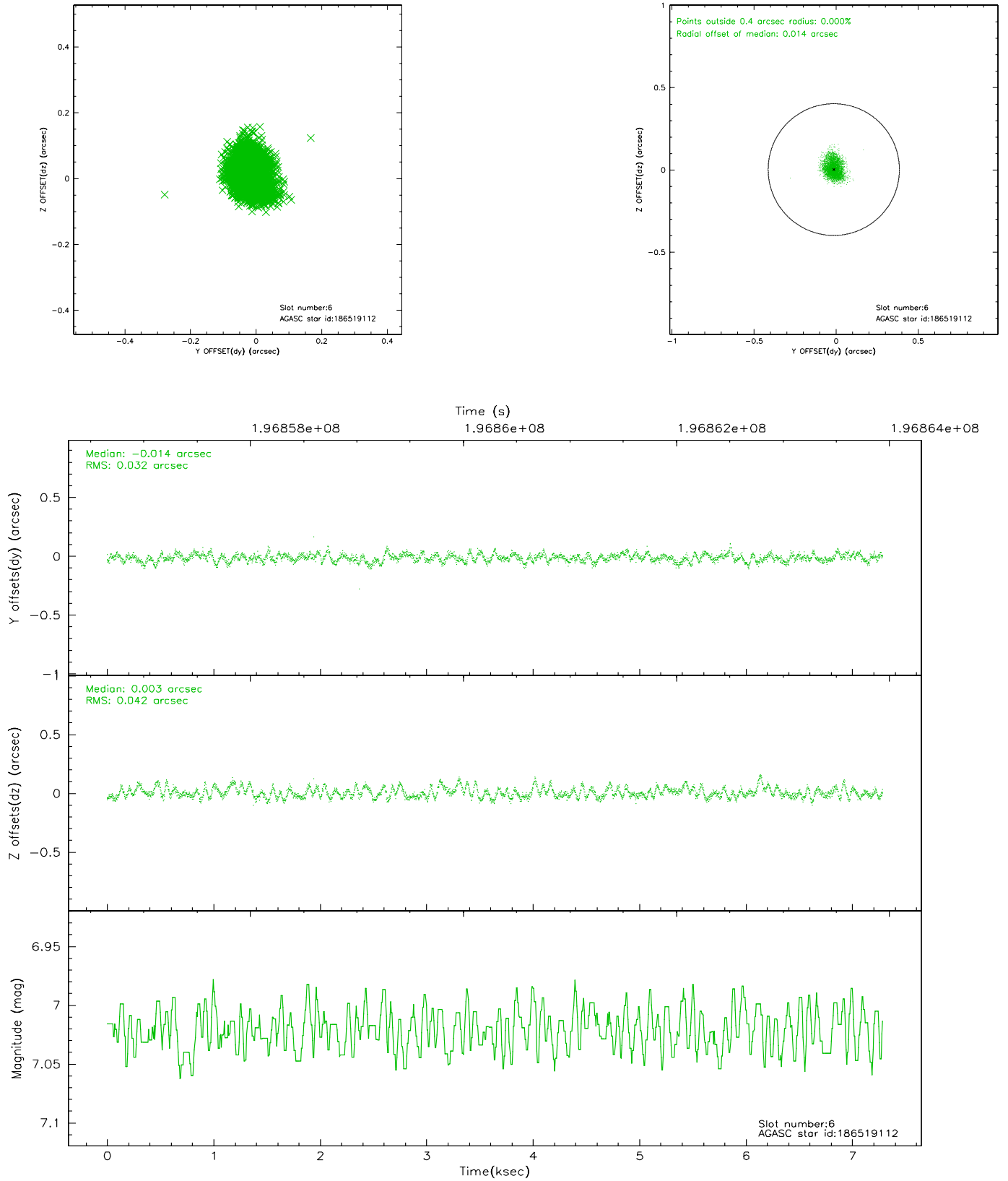
2.4.2 Slot 4



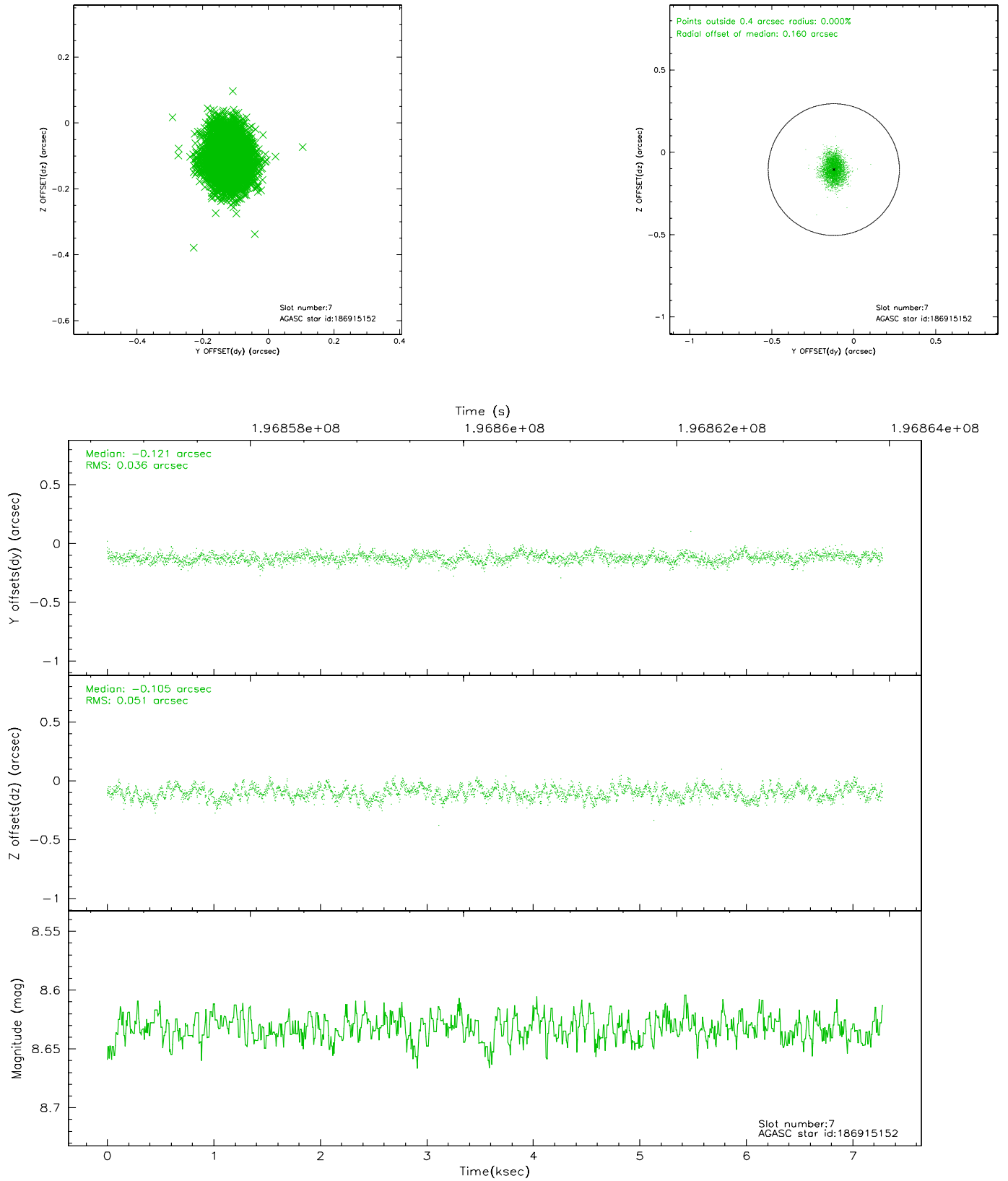
2.4.3 Slot 5



2.4.4 Slot 6

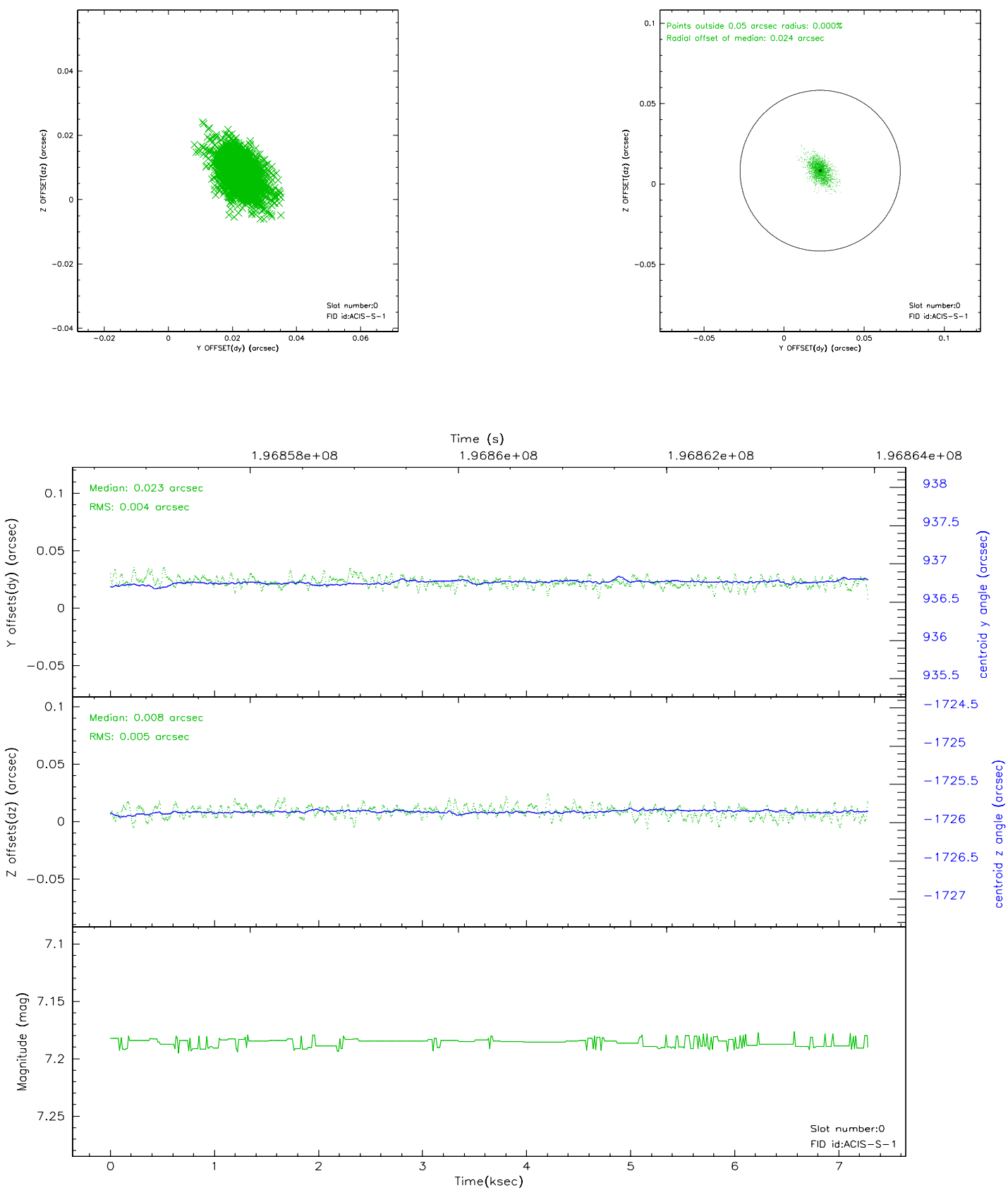


2.4.5 Slot 7

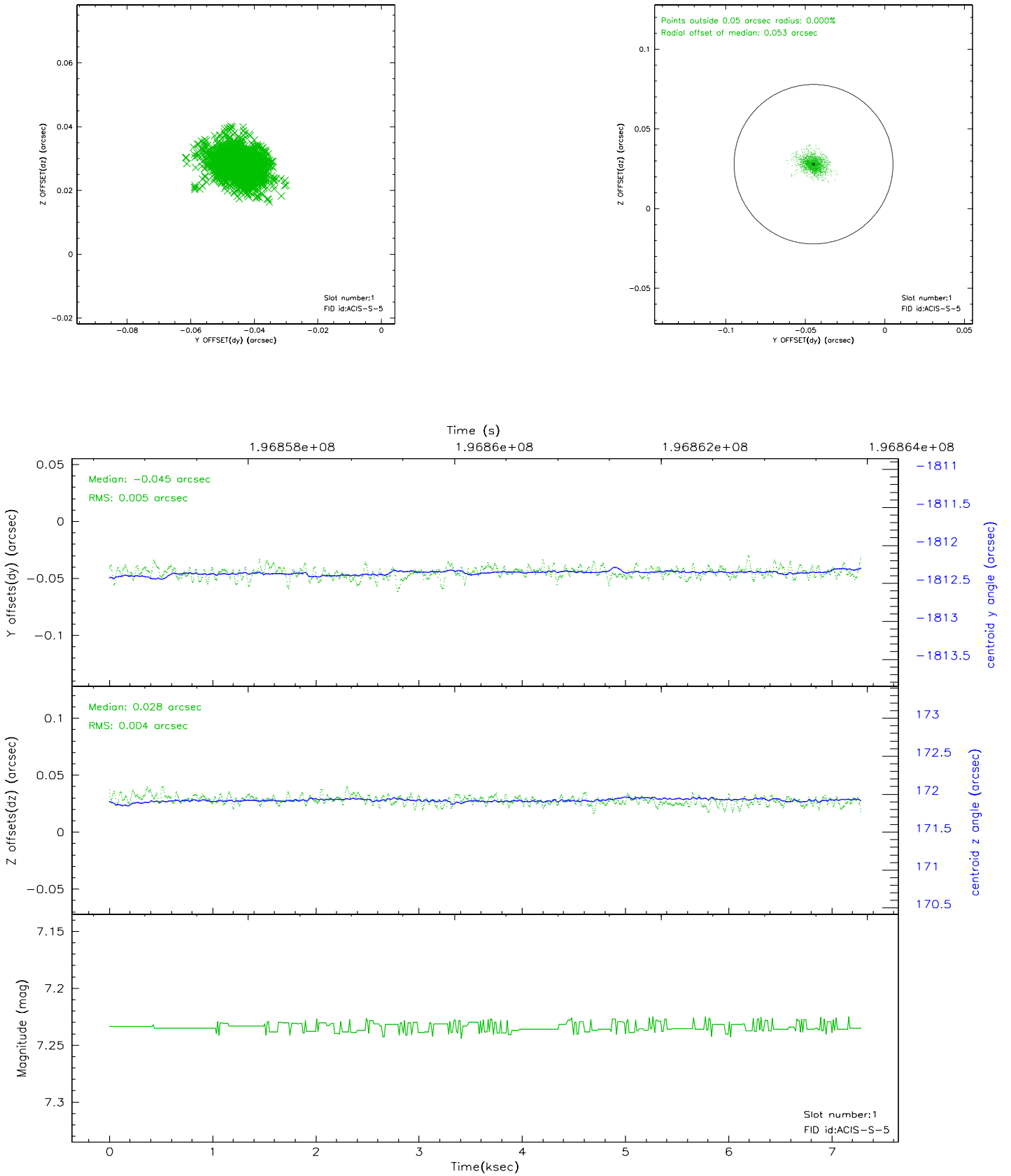


2.5 FID Slots

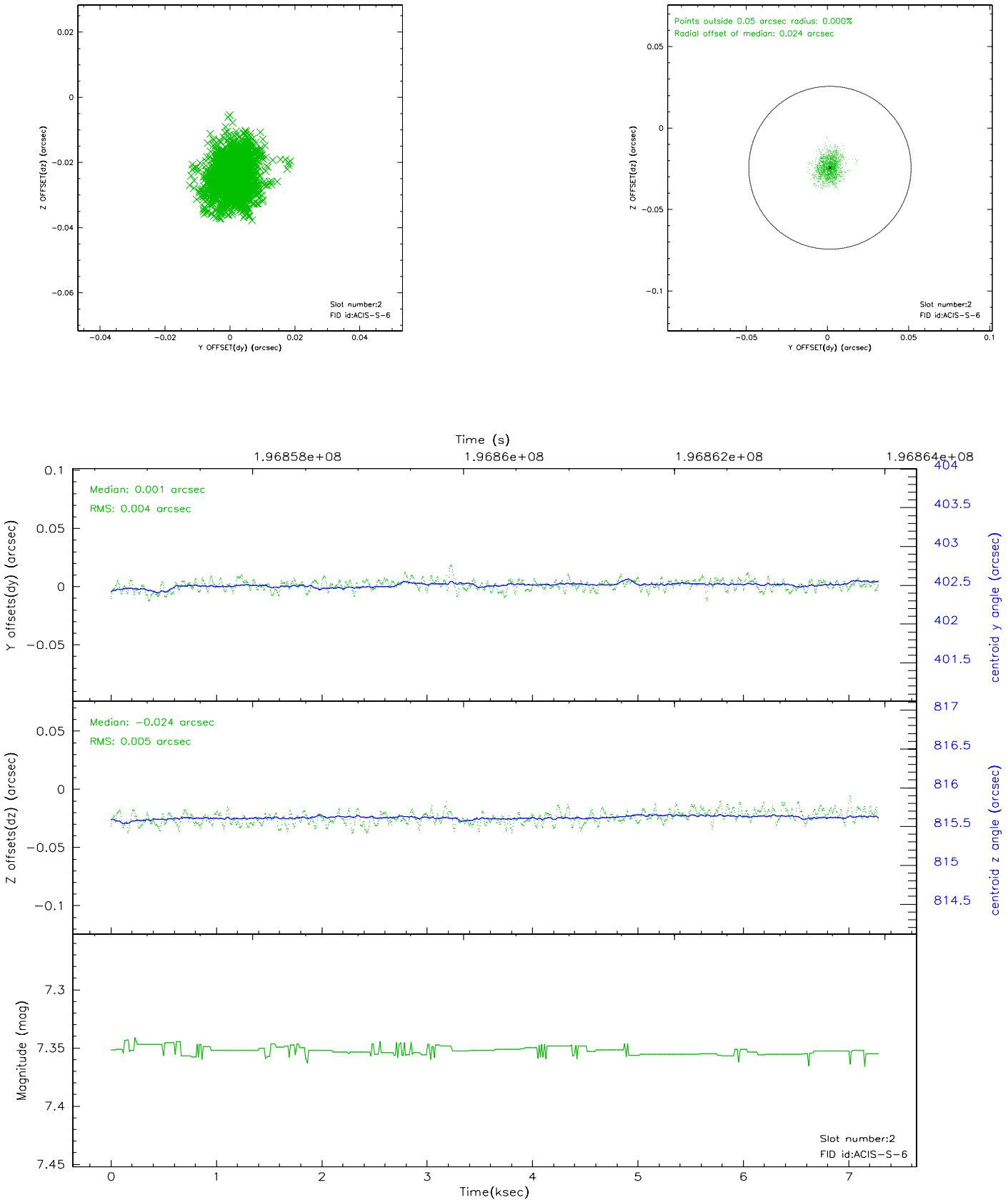
2.5.1 Slot 0



2.5.2 Slot 1



2.5.3 Slot 2



3 Point Sources

A Summary

A.1 Status

V&V Scientist	Beth Sundheim
V&V Date (YYYY-MM-DD)	2006.05.30
V&V Edition	1
V&V Disposition and Status	OK
V&V Charge Time	7.284

A.2 Comments