

V&V Reference Report

L2 ASCDS Version : 7.6.8

Observation 4747 - L2 Version 001
Chandra X-Ray Center

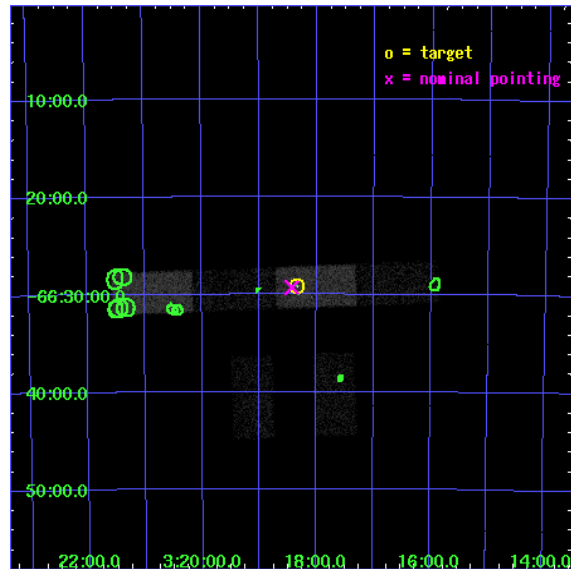
L2 Processing Date : Jun 27 2006

Contents

1	Front	2
2	OBI	3
2.1	OBI	3
2.1.1	Images	3
2.1.2	Bias	3
2.1.3	Parameters	4
2.1.4	Events	4
2.2	Compared Parameters	5
2.3	Aspect	6
2.4	Star Slots	9
2.4.1	Slot 3	9
2.4.2	Slot 4	10
2.4.3	Slot 5	11
2.4.4	Slot 6	12
2.4.5	Slot 7	13
2.5	FID Slots	14
2.5.1	Slot 0	14
2.5.2	Slot 1	15
2.5.3	Slot 2	16
3	Point Sources	17
A	Summary	18
A.1	Status	18
A.2	Comments	18

1 Front

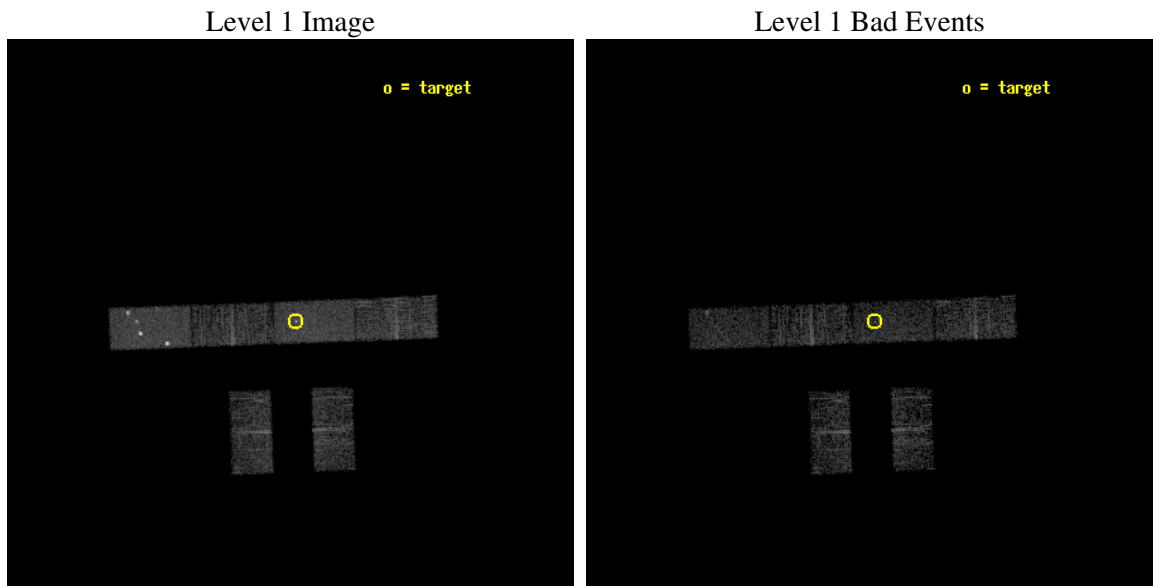
seq_num	600402
obs_id	4747
title	Observations of Intermediate Mass Black Hole Candidate Ultra-Luminous X-ray Sources
observer	Dr Jon Miller
object	NGC 1313 X-1 Obs 1
dtcycle	0
cycle	P
ra_targ	49.583333
dec_targ	-66.486389
ra_nom	49.607267285832
dec_nom	-66.488422386395
roll_nom	357.86332994009
revision	2
ontime	5405.4000357985
livetime	5284.9042195919
ontime2	5405.4000357985
ontime3	5405.4000357985
ontime5	5405.4000357985
ontime6	5405.4000357985
ontime7	5405.4000357985
ontime8	5405.4000357985
l2events	28933



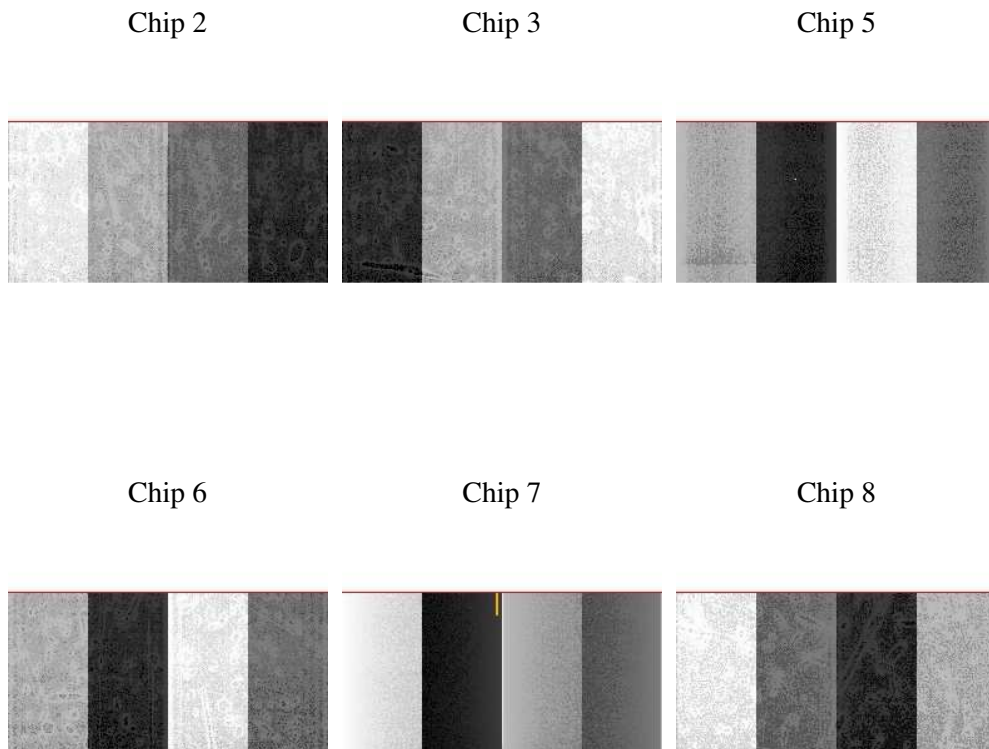
2 OBI

2.1 OBI

2.1.1 Images



2.1.2 Bias



2.1.3 Parameters

obi_num	0
ascdsver	7.6.8
caldsver	3.2.2
date	2006-06-28T01:35:51
revision	2

sched_exp_time	5000.000000
ontime	5407.0718945265
ontime2	5407.0718945265
ontime3	5407.0718945265
ontime5	5407.0718945265
ontime6	5407.0718945265
ontime7	5407.0718945265
ontime8	5407.0718945265
l1events	117384

2.1.4 Events

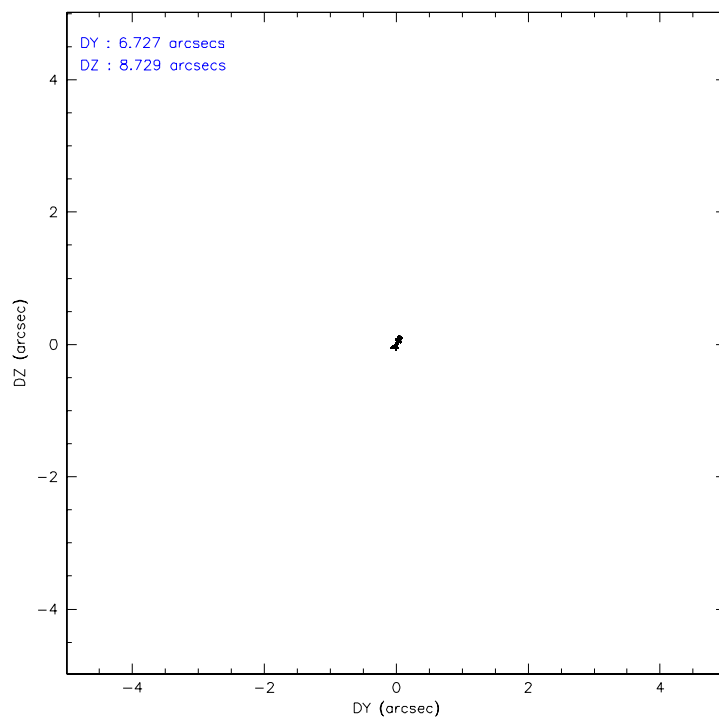
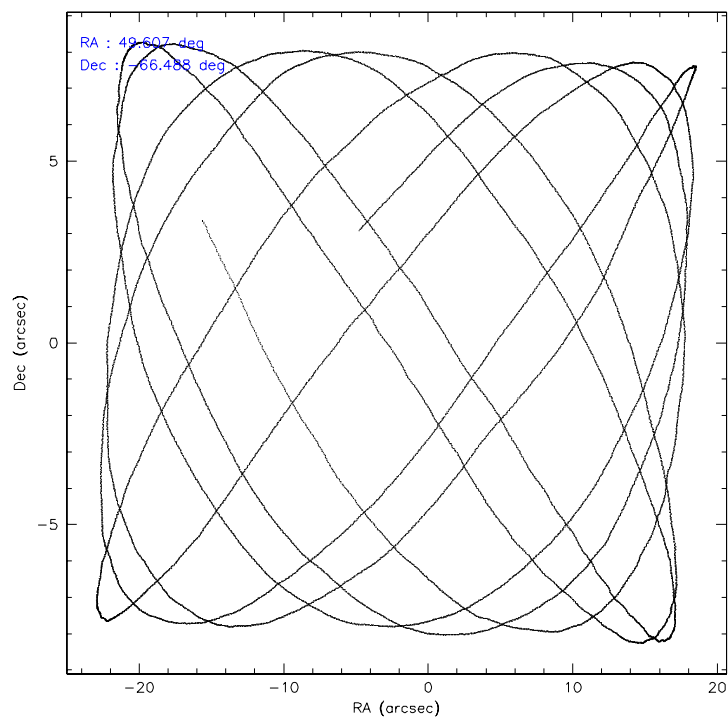
	ccd 2	ccd 3	ccd 5	ccd 6	ccd 7	ccd 8
level 1 events	14778	14505	28812	15653	23995	19641
rejected events	12674	12468	12133	13502	12398	14624
rejected %	85%	85%	42%	86%	51%	74%

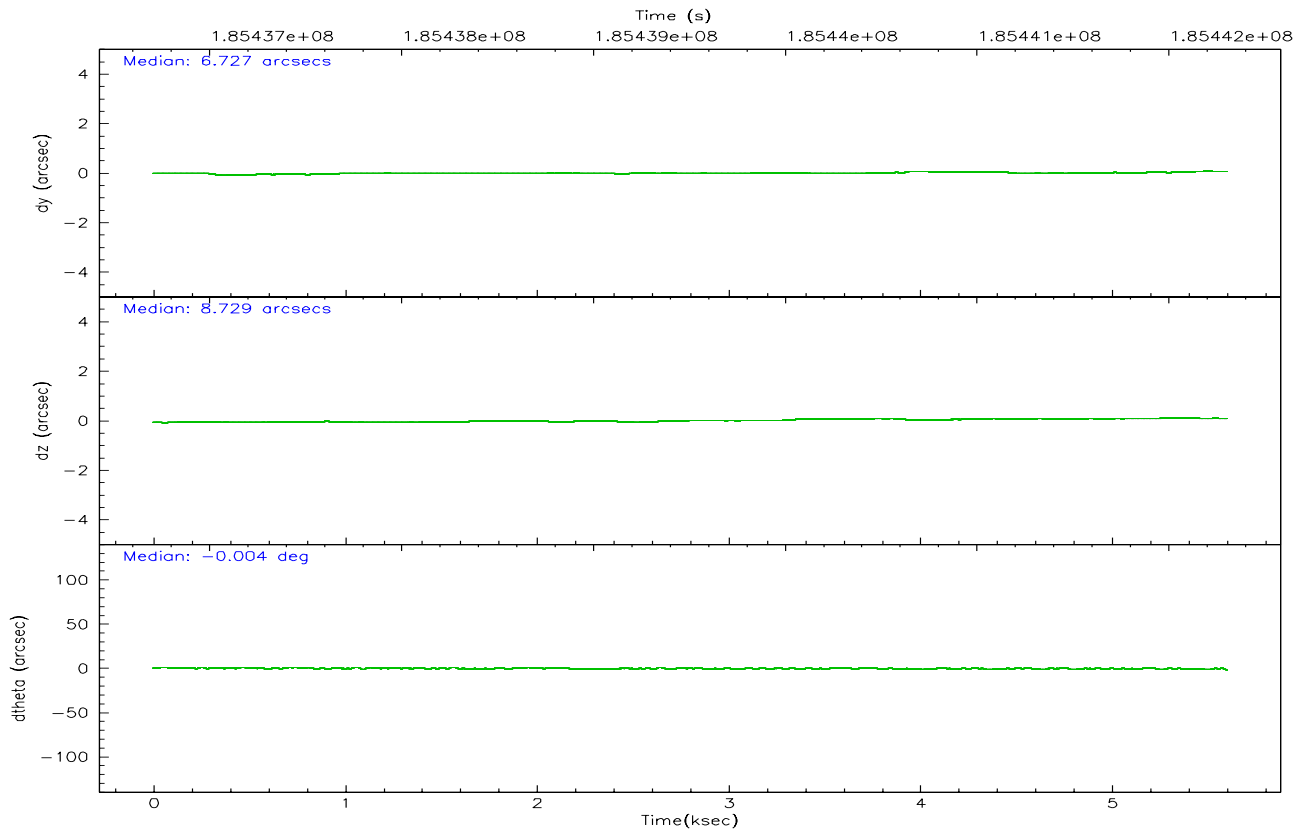
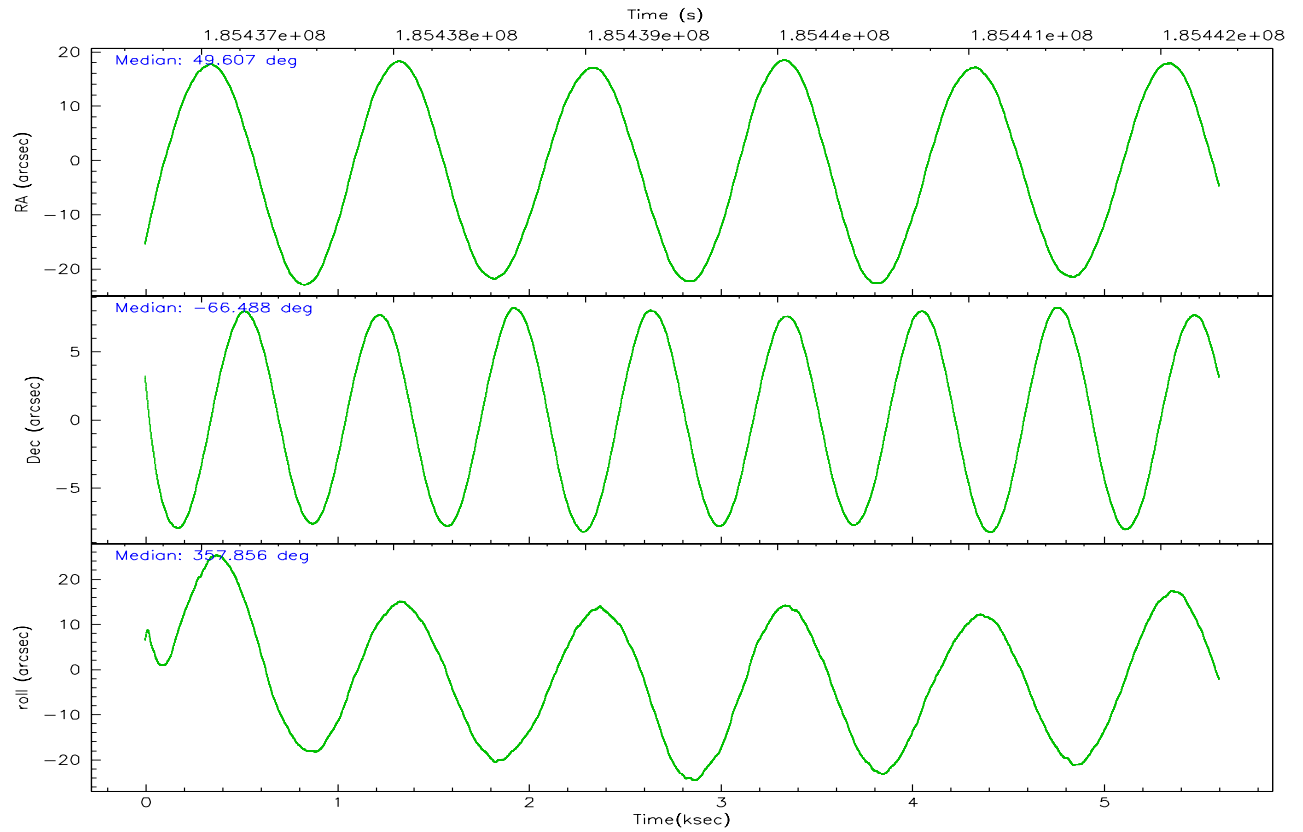
	ccd 2	ccd 3	ccd 5	ccd 6	ccd 7	ccd 8
grade 0 events	928	884	6348	893	1232	1644
	6%	6%	22%	5%	5%	8%
grade 1 events	6	9	26	8	26	5
	0%	0%	0%	0%	0%	0%
grade 2 events	429	398	3802	458	2825	1000
	2%	2%	13%	2%	11%	5%
grade 3 events	194	200	307	217	768	592
	1%	1%	1%	1%	3%	3%
grade 4 events	219	204	292	212	774	562
	1%	1%	1%	1%	3%	2%
grade 5 events	540	658	1095	661	1548	827
	3%	4%	3%	4%	6%	4%
grade 6 events	335	351	5937	371	5999	1221
	2%	2%	20%	2%	25%	6%
grade 7 events	12127	11801	11005	12833	10823	13790
	82%	81%	38%	81%	45%	70%

2.2 Compared Parameters

Parameter	Planned	Actual	Parameter	Planned	Actual
Instrument	ACIS	ACIS	Obspar format version number	6	6
Detector	ACIS-235678	ACIS-235678	Obspar file type	PREDICTED	ACTUAL
Grating	NONE	NONE	Obspar update status	NONE	UPDATED
Data mode	FAINT	FAINT	On-chip summing requested	N	N
Observation mode	POINTING	POINTING	Subarray requested	1/2	1/2
Pointing RA	49.547079	49.60726728583161	Subarray start row	0	257
Pointing Dec	-66.501488	-66.48842238639543	Subarray row count	1024	512
Pointing Roll	357.651468	357.8633299400894	Alternating exposures requested	N	N
SIM focus pos (mm)	-0.684267	-0.6828225247311905	Primary exposure time	0.000000	1.8
SIM defocus (mm)	0	0.001444936568705701			
SIM translation stage pos (mm)	-190.132523	-190.1425803651734			
SIM translation stage offset (mm)	0	0.01005778216563158			
Observation start time	185437302.184000	185436131.79265			
Observation start date	2003-11-17T06:20:38	2003-11-17T06:02:11			
Observation end time	185442302.184000	185442727.66794			
Observation end date	2003-11-17T07:43:58	2003-11-17T07:52:07			
Read mode	TIMED	TIMED			

2.3 Aspect



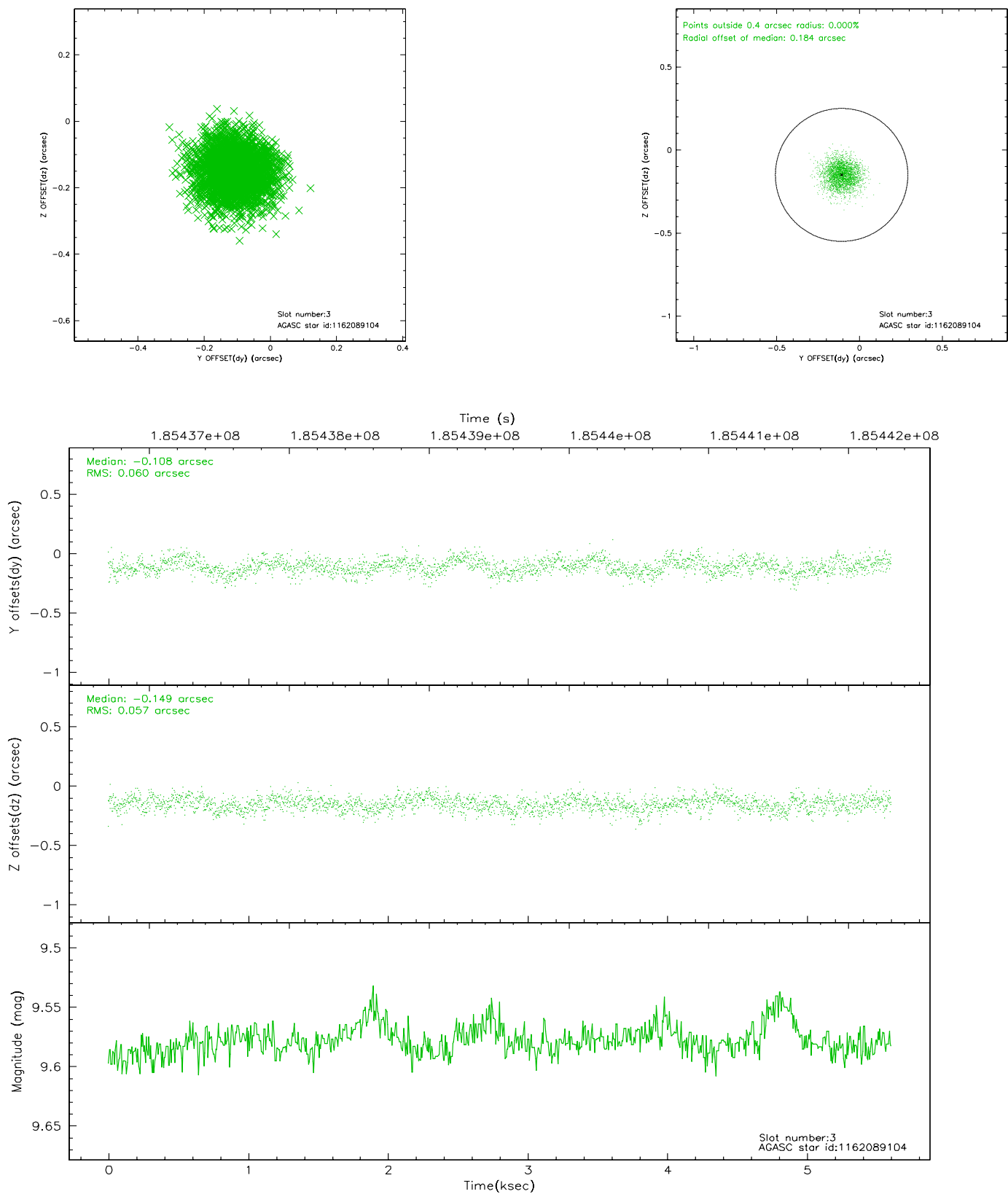


Slot Statistics

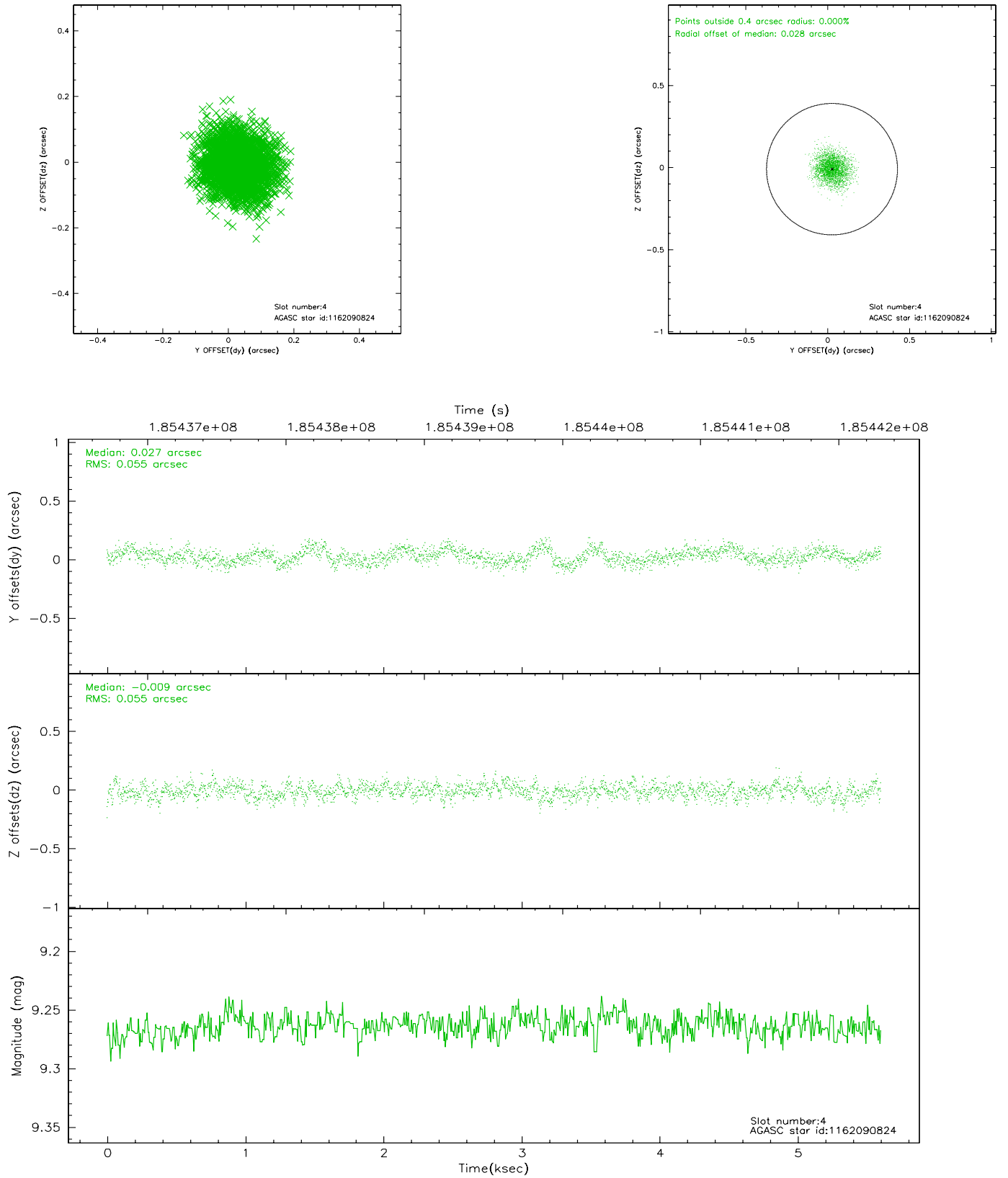
slot	status	id	mag	n_pts	med_dy	med_dz	dr1	dr2	ra	dec	mean_y	mean_z
0	FID	ACIS-S-2	7.10	1368	-0.032	-0.004	0.005	0.010	0.000000	0.000000	-759.50	-1729.91
1	FID	ACIS-S-4	7.20	1367	0.025	0.023	0.006	0.009	0.000000	0.000000	2153.34	177.50
2	FID	ACIS-S-6	7.35	1366	-0.021	-0.012	0.007	0.011	0.000000	0.000000	403.86	816.08
3	GUIDE	1162089104	9.58	2735	-0.108	-0.149	0.087	0.142	48.422126	-66.410699	-1632.29	245.39
4	GUIDE	1162090824	9.26	2733	0.027	-0.009	0.084	0.133	48.677982	-66.885202	-1170.82	-1439.01
5	GUIDE	1162094224	9.70	2733	0.040	0.033	0.097	0.157	49.638584	-66.701903	159.30	-715.96
6	GUIDE	1162095544	10.18	2734	-0.150	0.087	0.147	0.230	48.846024	-66.171463	-1067.56	1139.52
7	GUIDE	1162085688	10.27	2734	0.190	0.038	0.125	0.203	49.879892	-65.844121	392.34	2383.99

2.4 Star Slots

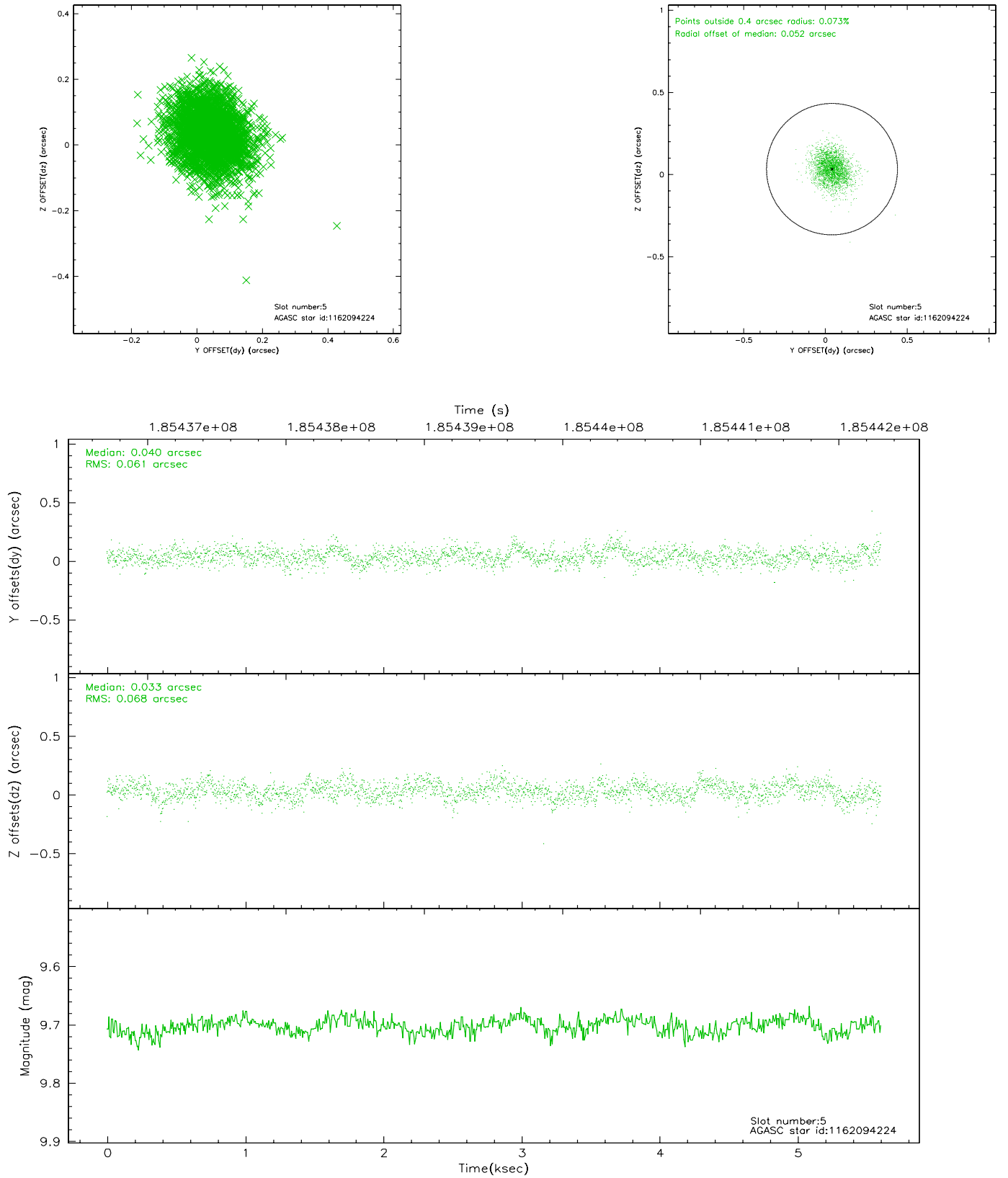
2.4.1 Slot 3



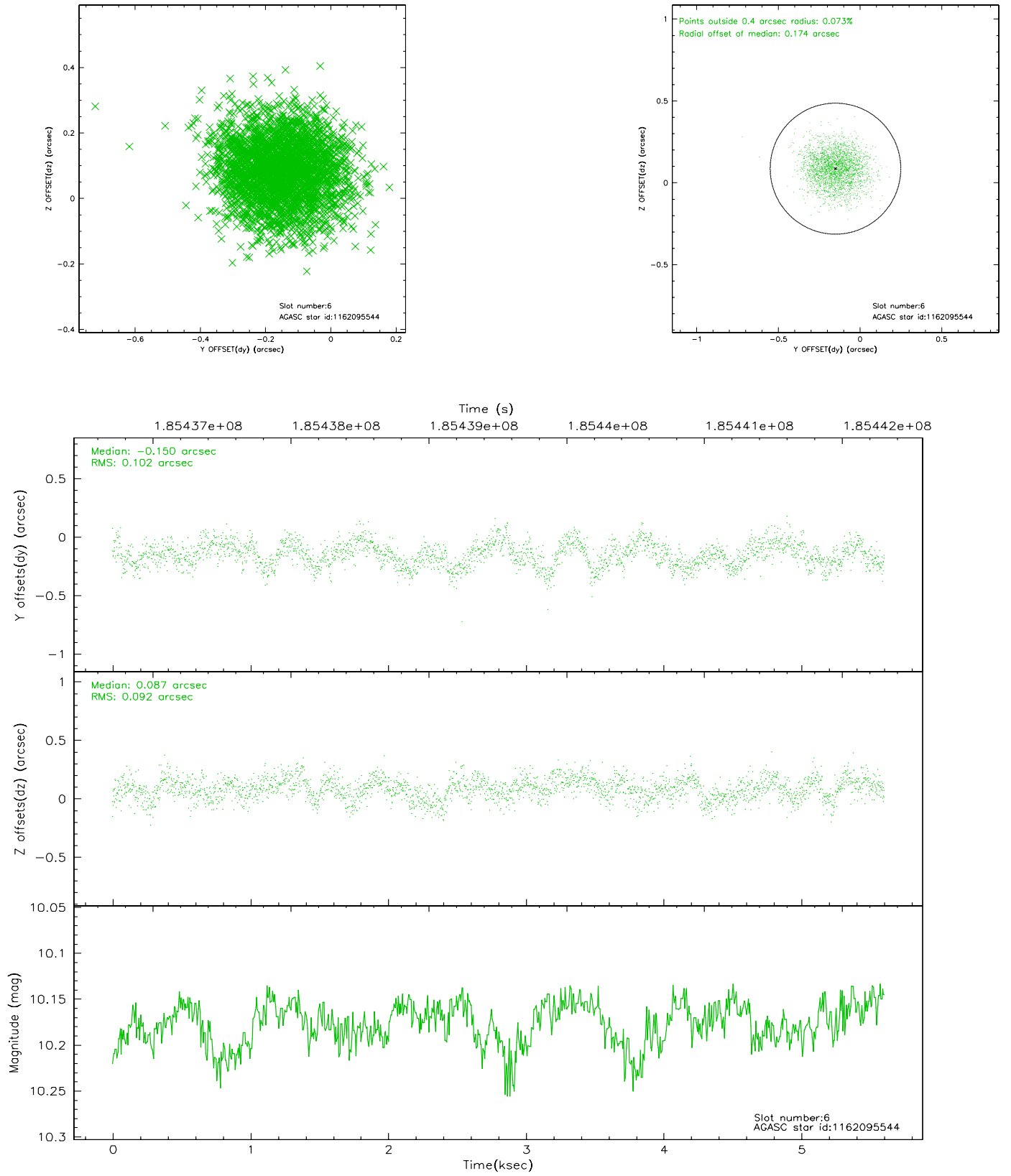
2.4.2 Slot 4



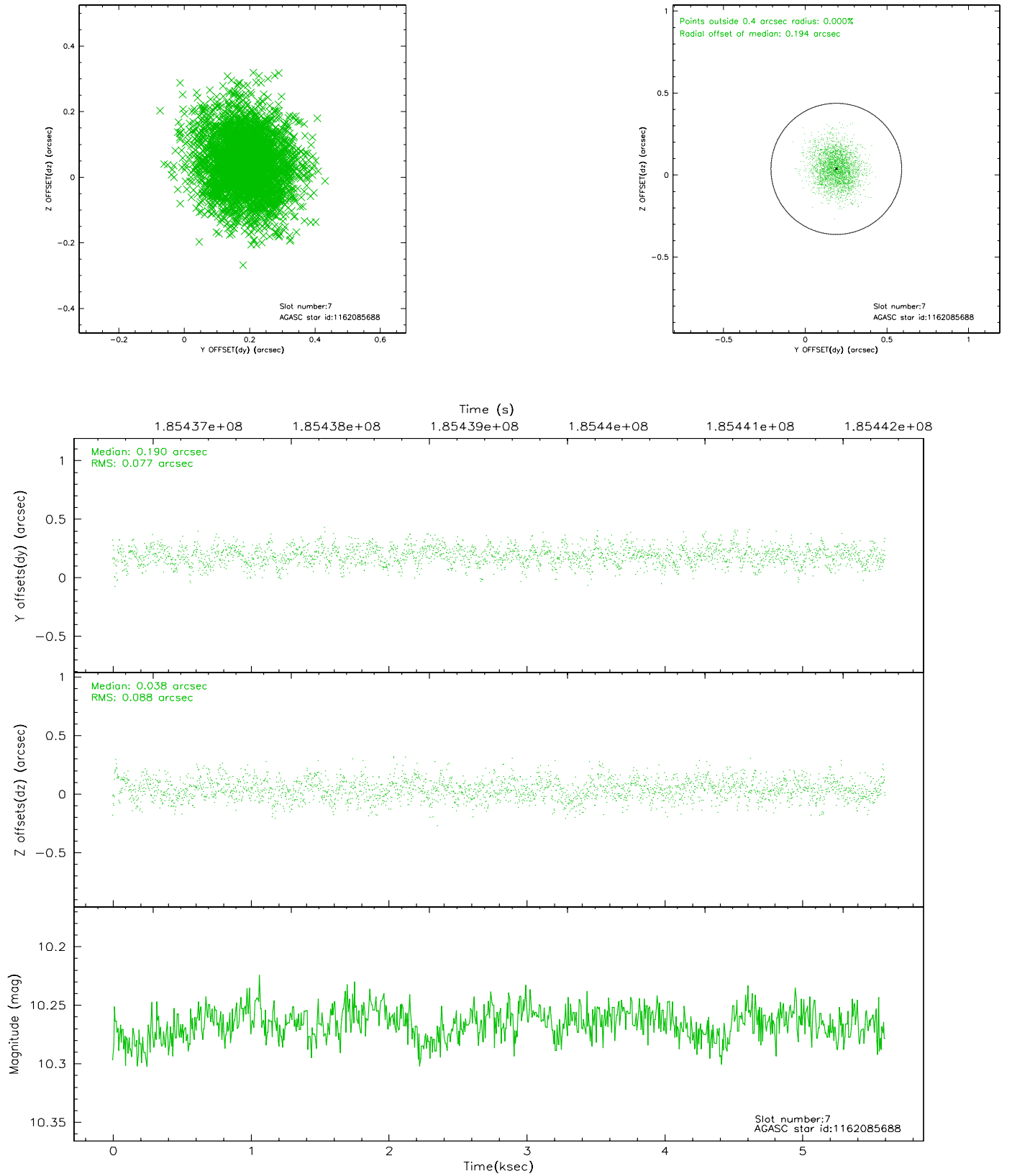
2.4.3 Slot 5



2.4.4 Slot 6

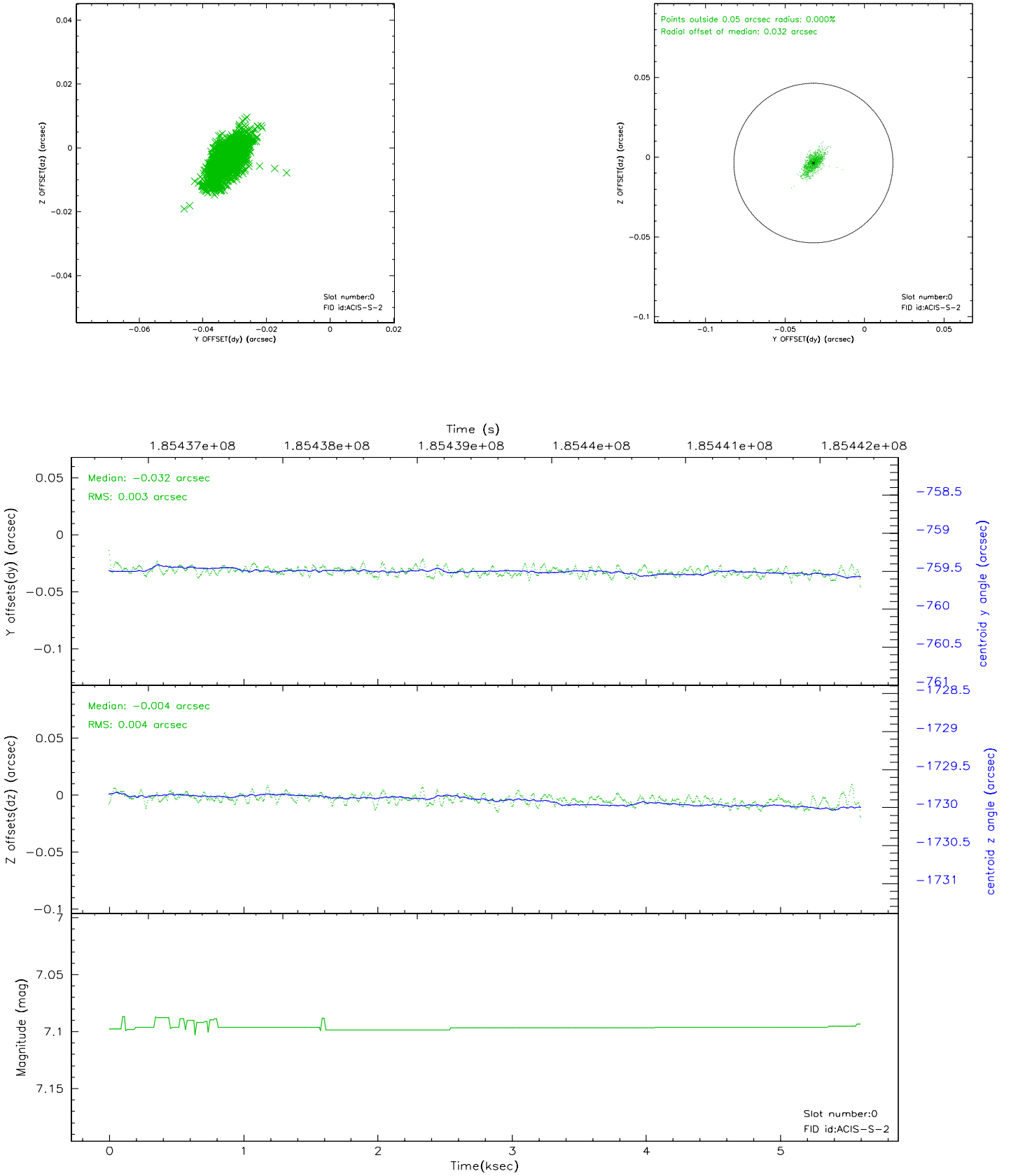


2.4.5 Slot 7

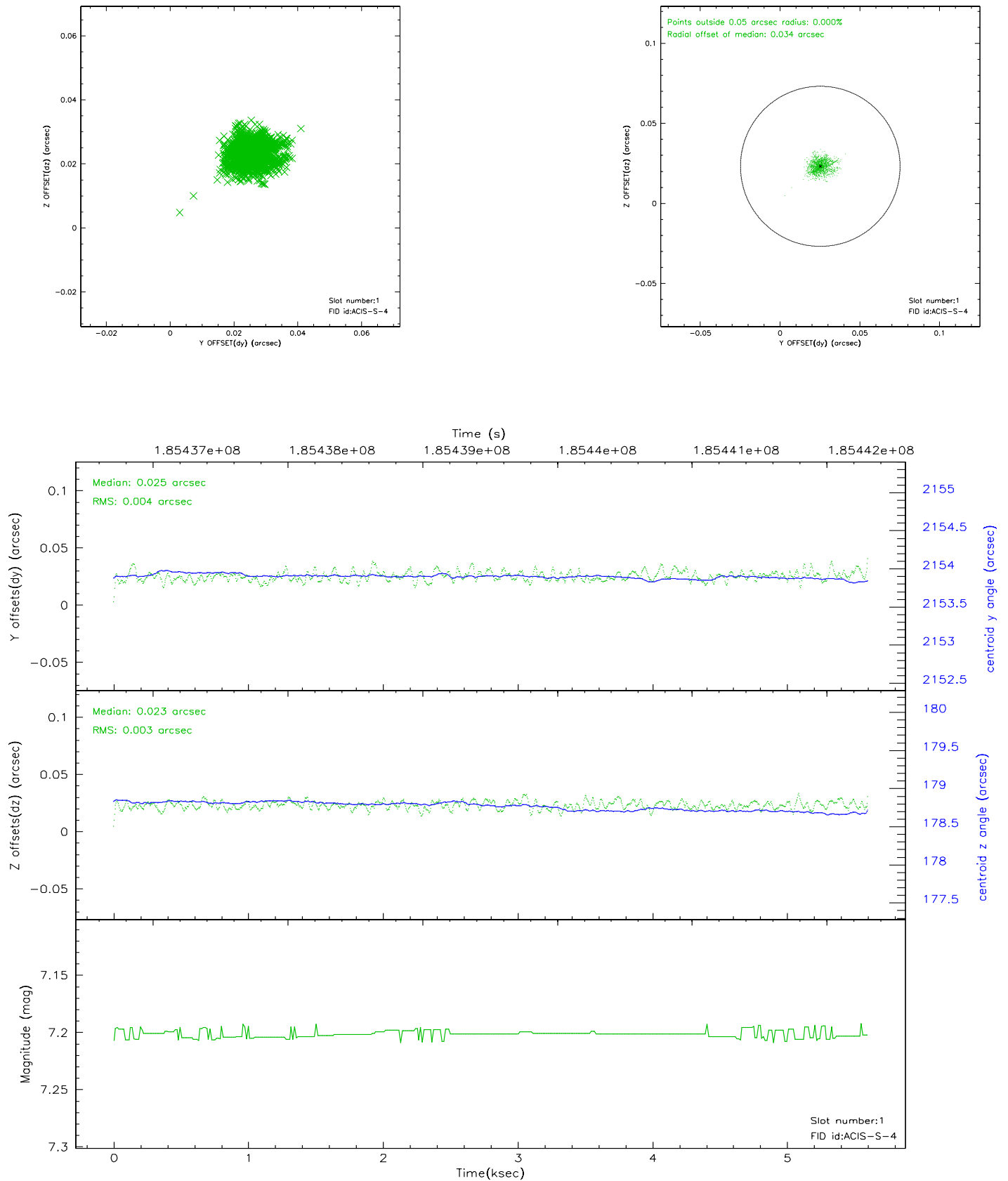


2.5 FID Slots

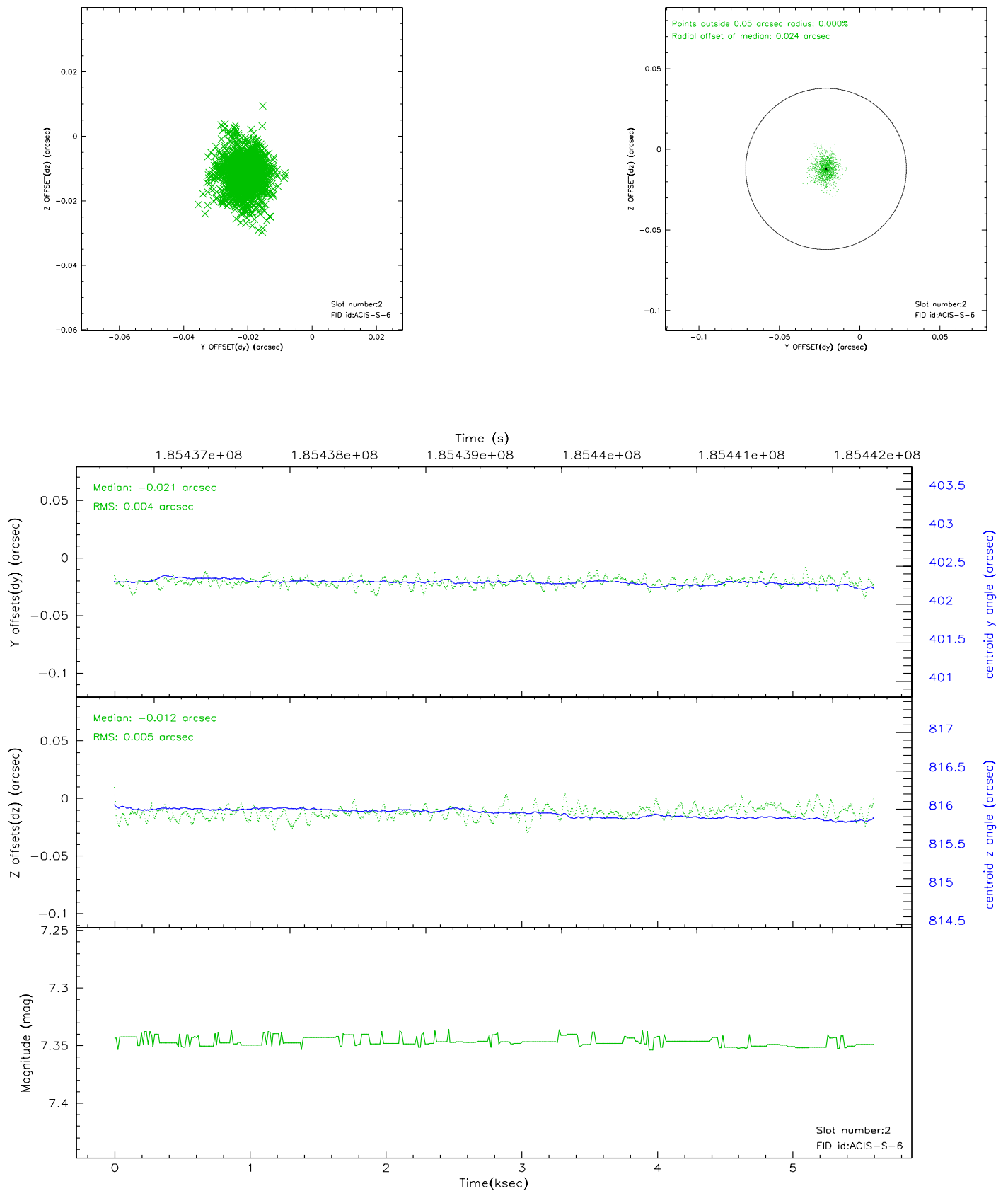
2.5.1 Slot 0



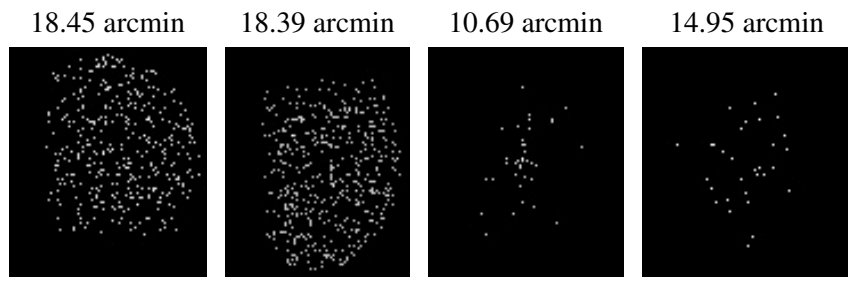
2.5.2 Slot 1



2.5.3 Slot 2



3 Point Sources



A Summary

A.1 Status

V&V Scientist	Beth Sundheim
V&V Date (YYYY-MM-DD)	2006.06.28
V&V Edition	1
V&V Disposition and Status	OK
V&V Charge Time	5.405

A.2 Comments