

V&V Reference Report

L2 ASCDS Version : 8.5.1

Observation 4737 - L2 Version 3
Chandra X-Ray Center

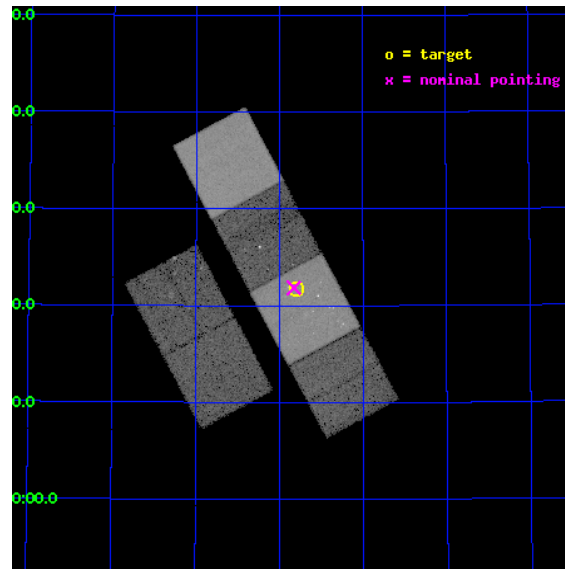
L2 Processing Date : Dec 16 2012

Contents

1	Front	2
2	OBI	3
2.1	OBI	3
2.1.1	Images	3
2.1.2	Bias	3
2.1.3	Parameters	4
2.1.4	Events	4
2.2	Compared Parameters	5
2.3	Aspect	6
2.4	Star Slots	9
2.4.1	Slot 3	9
2.4.2	Slot 4	10
2.4.3	Slot 5	11
2.4.4	Slot 6	12
2.4.5	Slot 7	13
2.5	FID Slots	14
2.5.1	Slot 0	14
2.5.2	Slot 1	15
2.5.3	Slot 2	16
A	Summary	17
A.1	Status	17
A.2	Comments	17

1 Front

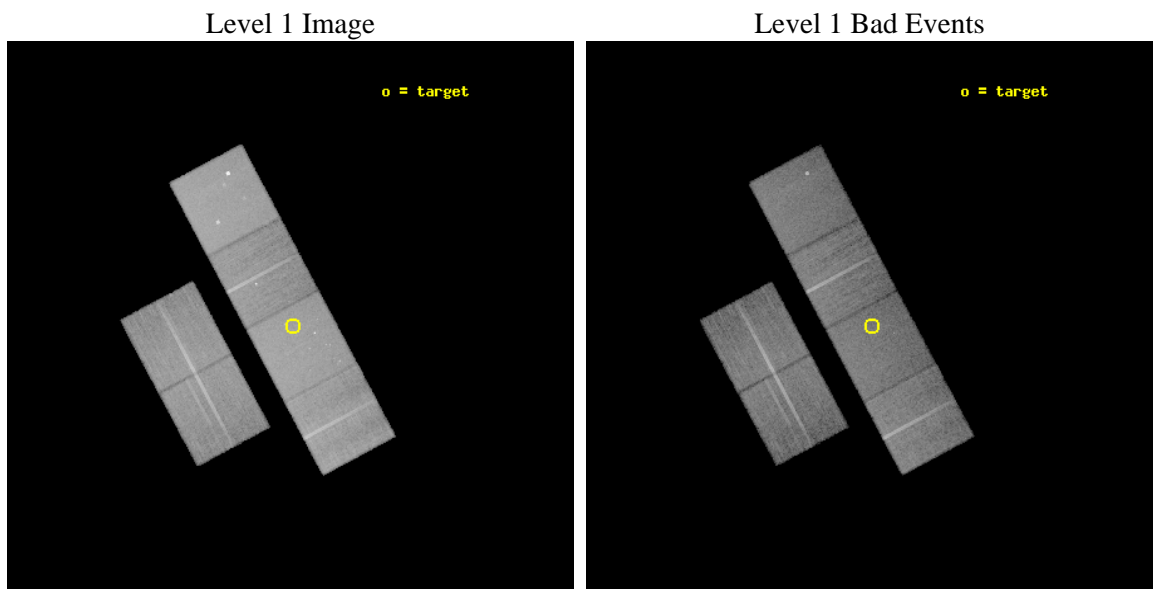
seq_num	600392	Sequence number
obs_id	4737	Observation id
title	An Ultra-Deep Study of M101	Proposal title
observer	Dr. K.D. Kuntz	Principal investigator
object	M101	Source name
dtcycle	0	
cycle	P	events from which exps? Prim/Second/Both
ra_targ	210.950833	Observer's specified target RA [deg]
dec_targ	54.361389	Observer's specified target Dec [deg]
ra_nom	210.95662196563	Nominal RA [deg]
dec_nom	54.364178923773	Nominal Dec [deg]
roll_nom	61.9260968625	Nominal Roll [deg]
revision	3	Processing version of data
ontime	22134.399917543	Sum of GTIs [s]
livetime	21854.120818051	Livetime [s]
ontime2	22131.158947259	Sum of GTIs [s]
ontime3	22131.158947259	Sum of GTIs [s]
ontime5	22134.399917543	Sum of GTIs [s]
ontime6	22124.676907063	Sum of GTIs [s]
ontime7	22134.399917543	Sum of GTIs [s]
ontime8	22131.159066796	Sum of GTIs [s]
l2events	280539	Number of level 2 events



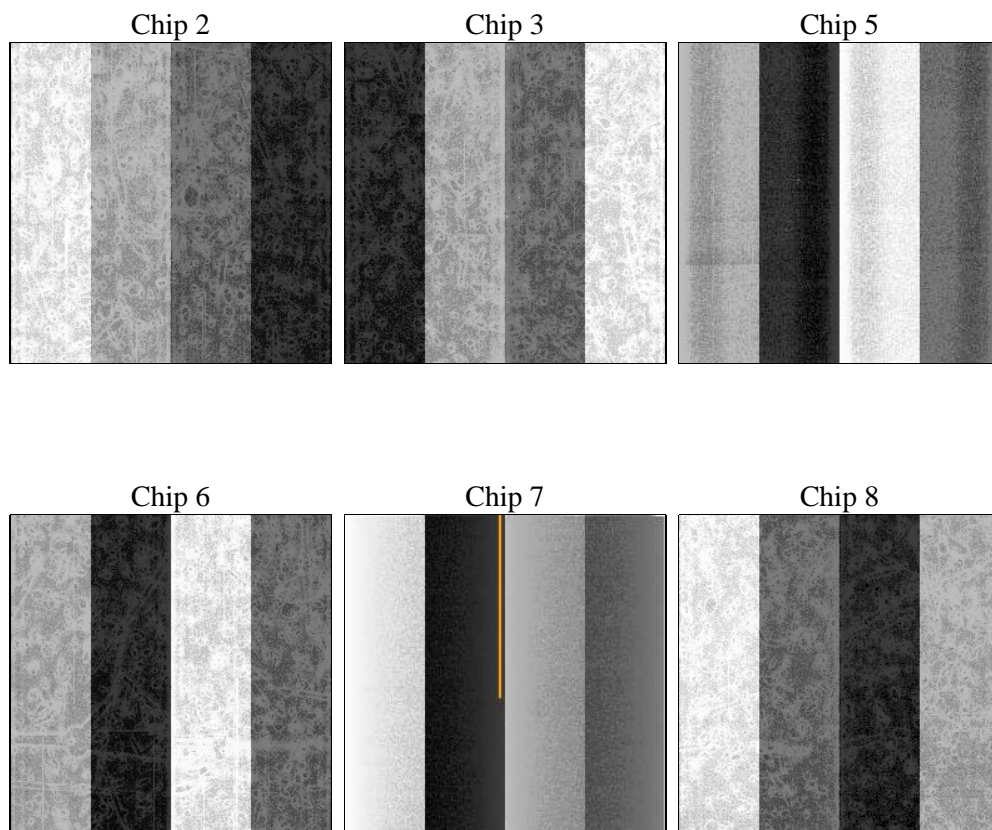
2 OBI

2.1 OBI

2.1.1 Images



2.1.2 Bias



2.1.3 Parameters

obi_num	0	Obi number	sched_exp_time	22000.000000	[s] Scheduled observation exposure time
ascdsver	8.5.1	Processing system revision	ontime	22134.399917543	Sum of GTIs [s]
caldsver	4.5.5	 	ontime2	22131.158947259	Sum of GTIs [s]
date	2012-12-15T21:00:40	Date and time of file creation	ontime3	22131.158947259	Sum of GTIs [s]
revision	3	Processing version of data	ontime5	22134.399917543	Sum of GTIs [s]
			ontime6	22124.676907063	Sum of GTIs [s]
			ontime7	22134.399917543	Sum of GTIs [s]
			ontime8	22131.159066796	Sum of GTIs [s]
			l1events	1204601	Number of level 1 events

2.1.4 Events

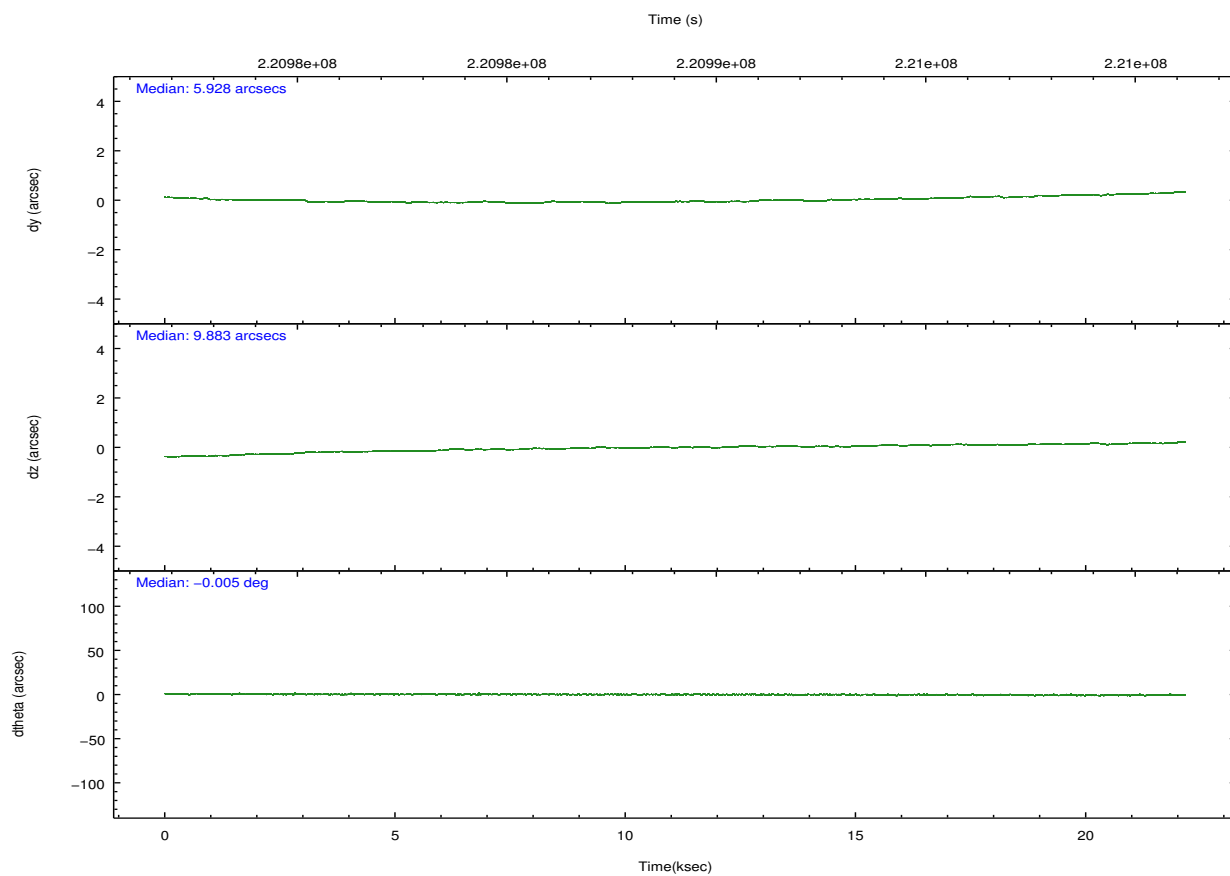
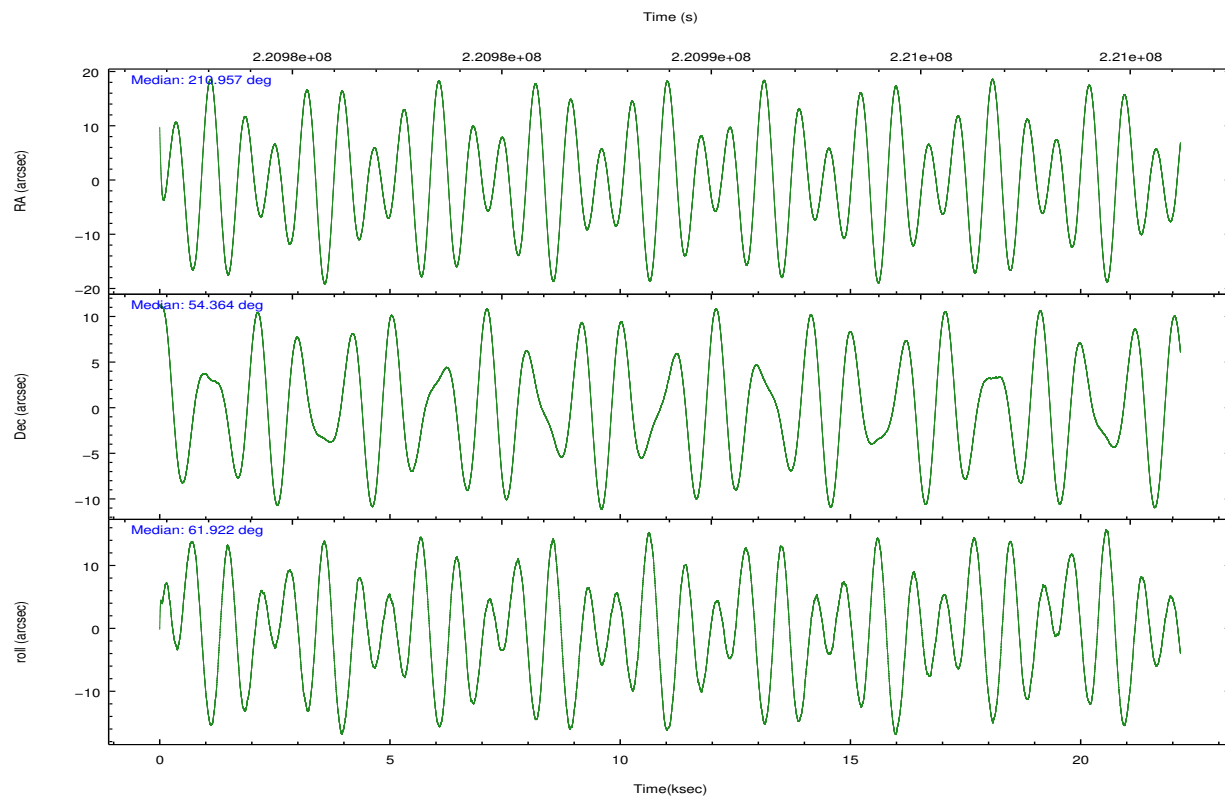
	ccd 2	ccd 3	ccd 5	ccd 6	ccd 7	ccd 8		ccd 2	ccd 3	ccd 5	ccd 6	ccd 7	ccd 8
level 1 events	171687	162309	255481	170766	230937	213421	grade 0 events	9334	8631	10880	9312	10403	15165
rejected events	151267	142602	135494	149326	131320	166223		5%	5%	4%	5%	4%	7%
rejected %	88%	87%	53%	87%	56%	77%	grade 1 events	94	107	1508	113	249	112
								0%	0%	0%	0%	0%	0%
							grade 2 events	4165	3775	39262	4210	19971	10226
								2%	2%	15%	2%	8%	4%
							grade 3 events	1860	1921	4558	1874	8753	5169
								1%	1%	1%	1%	3%	2%
							grade 4 events	1840	1932	4531	2009	8876	4812
								1%	1%	1%	1%	3%	2%
							grade 5 events	6688	7366	18802	7698	21578	9939
								3%	4%	7%	4%	9%	4%
							grade 6 events	3225	3449	60764	4036	51627	11830
								1%	2%	23%	2%	22%	5%
							grade 7 events	144481	135128	115176	141514	109480	156168
								84%	83%	45%	82%	47%	73%

2.2 Compared Parameters

Parameter	Planned	Actual
Instrument	ACIS	ACIS
Detector	ACIS-235678	ACIS-235678
Grating	NONE	NONE
Data mode	VFAINT	VFAINT
Observation mode	POINTING	POINTING
[deg] Pointing RA	210.958820	210.9566219656301
[deg] Pointing Dec	54.336947	54.36417892377343
[deg] Pointing Roll	61.767672	61.92609686249963
[mm] SIM focus pos	-0.684267	-0.6828225247311905
[mm] SIM defocus	0	0.001444936568705701
[mm] SIM translation stage pos	-190.132523	-190.1400660498719
[mm] SIM translation stage offset	0	0.00754346686406393
[s] Observation start time (MET)	220978103.184000	220977054.60186
Observation start date	2005-01-01T14:47:19	2005-01-01T14:30:54
[s] Observation end time (MET)	221000103.184000	221000889.44043
Observation end date	2005-01-01T20:53:59	2005-01-01T21:08:09
Read mode	TIMED	TIMED

Parameter	Planned	Actual
Obspar format version number	7	7
Obspar file type	PREDICTED	ACTUAL
Obspar update status	NONE	UPDATED
Number of optional ACIS chips dropped	0	0
On-chip summing requested	N	N
Subarray requested	NONE	NONE
Alternating exposures requested	N	N
[s] Primary exposure time	0.000000	3.2

2.3 Aspect

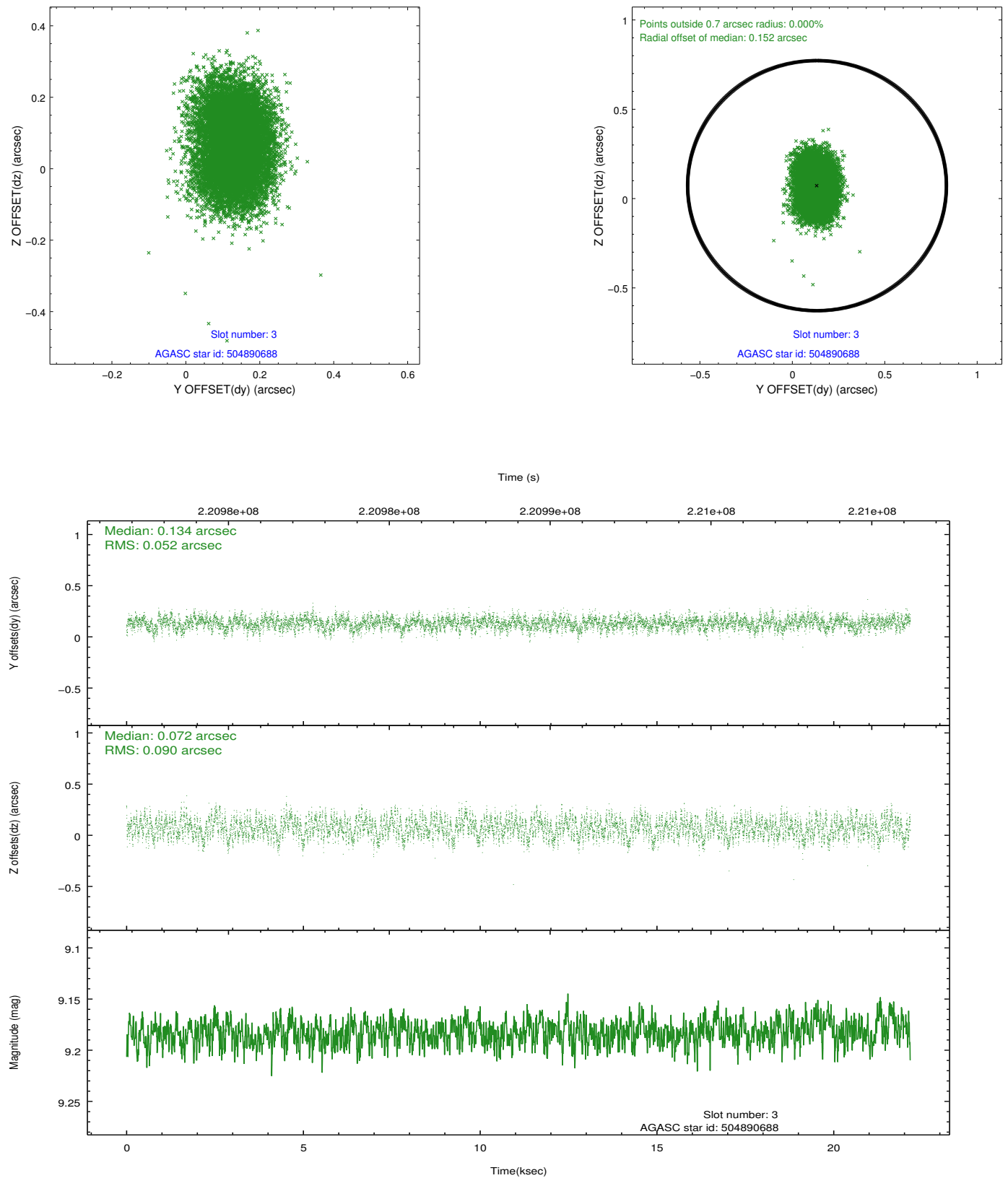


Slot Statistics

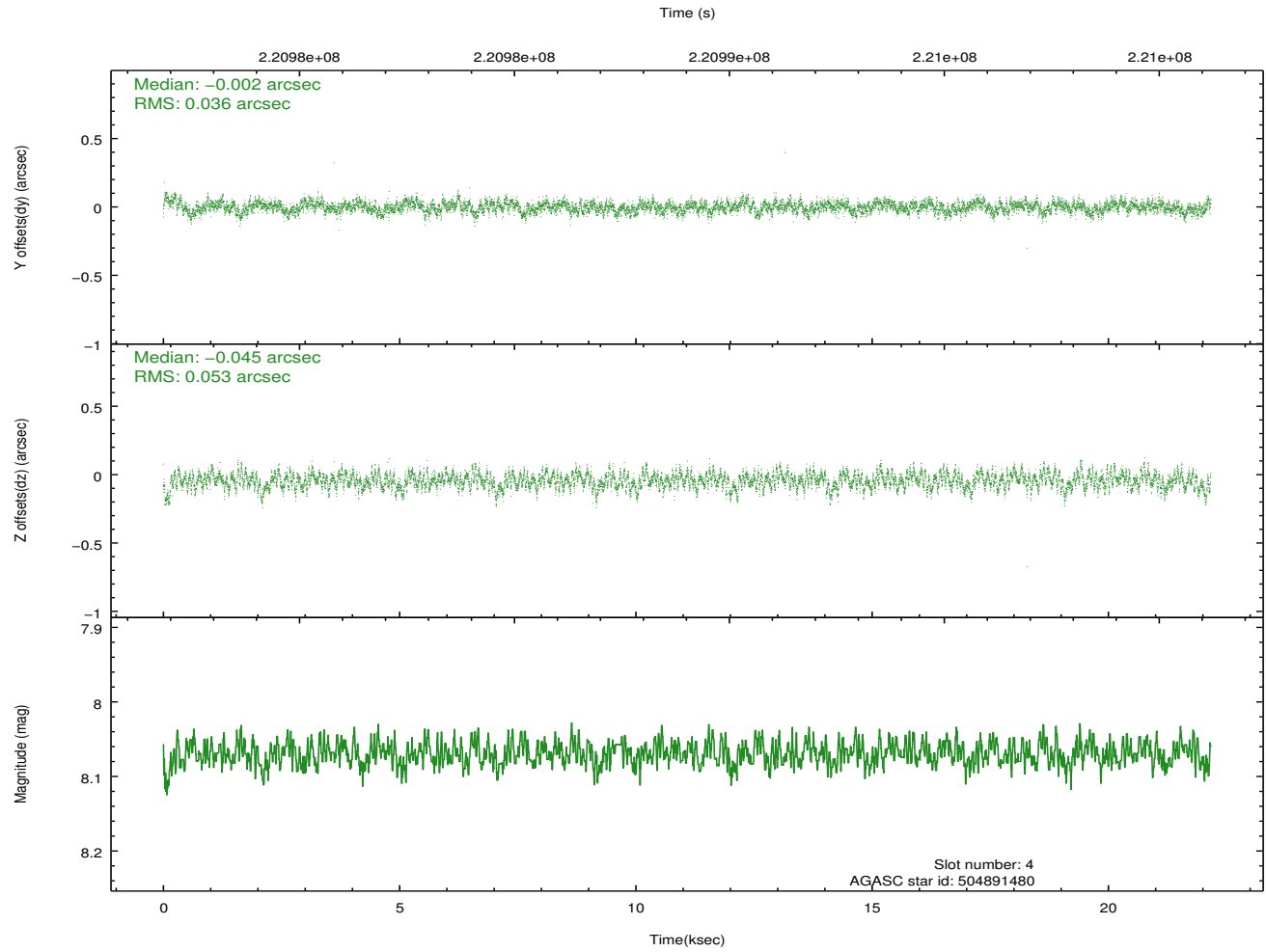
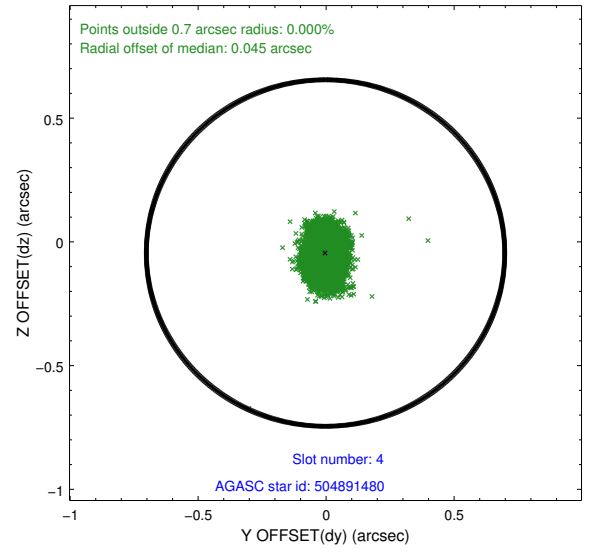
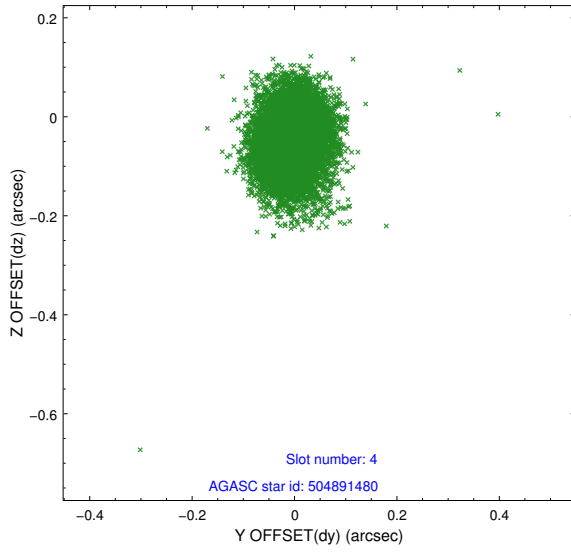
slot	status	id	mag	n_pts	med_dy	med_dz	dr1	dr2	ra	dec	mean_y	mean_z
0	FID	ACIS-S-2	7.10	5407	-0.076	-0.042	0.007	0.014	0.000000	0.000000	-758.72	-1731.15
1	FID	ACIS-S-4	7.21	5407	0.125	0.048	0.006	0.016	0.000000	0.000000	2154.66	177.31
2	FID	ACIS-S-5	7.23	5407	-0.080	0.003	0.008	0.015	0.000000	0.000000	-1811.40	171.05
3	GUIDE	504890688	9.18	10811	0.134	0.072	0.111	0.181	211.697686	53.837149	-835.28	-2230.34
4	GUIDE	504891480	8.07	10812	-0.002	-0.045	0.067	0.112	210.708012	54.666096	797.74	1021.01
5	GUIDE	504894408	9.26	10806	-0.139	0.119	0.097	0.156	211.942794	54.047749	79.51	-2317.45
6	GUIDE	504894856	8.98	10812	0.138	-0.128	0.086	0.136	209.819510	54.132689	-1767.42	1778.21
7	GUIDE	505292416	9.30	10808	-0.130	-0.018	0.091	0.146	210.920759	55.040479	2194.19	1268.24

2.4 Star Slots

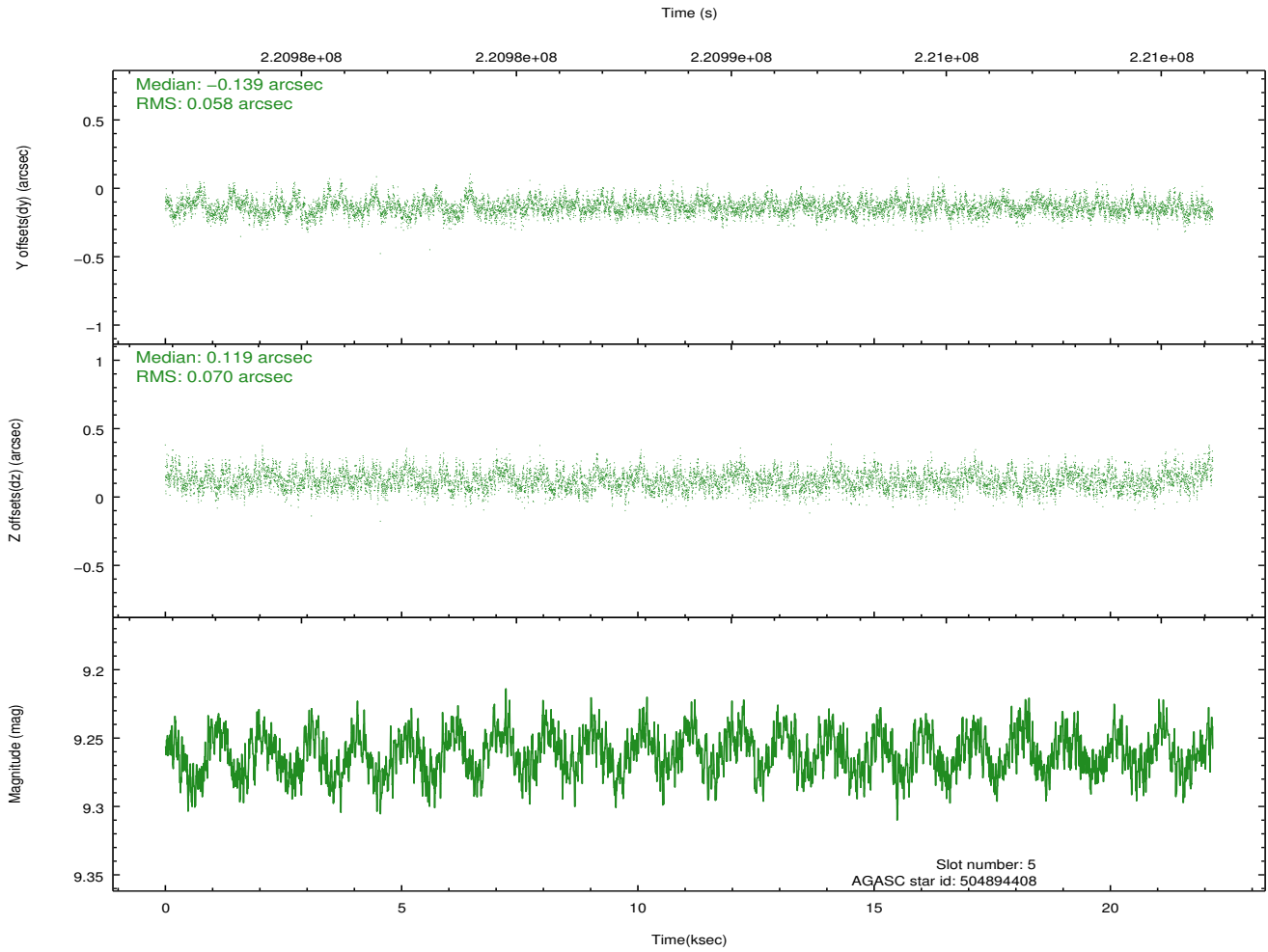
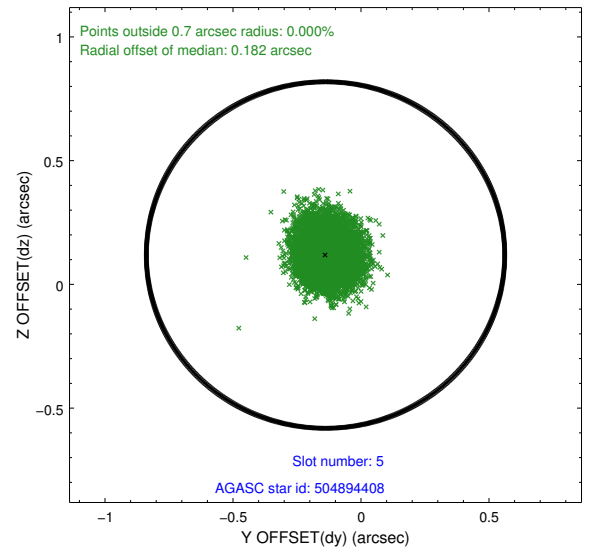
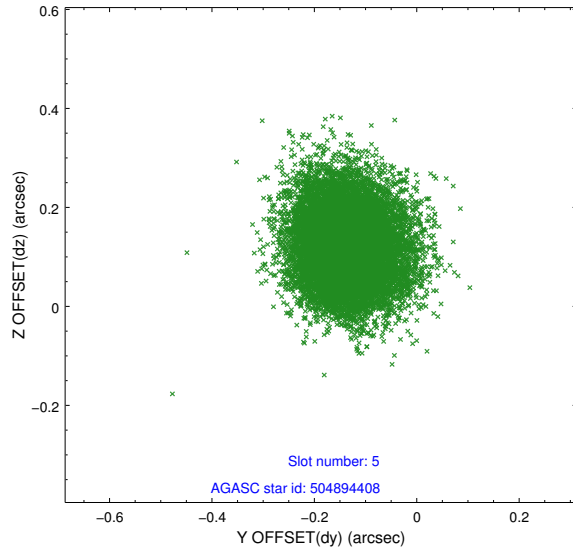
2.4.1 Slot 3



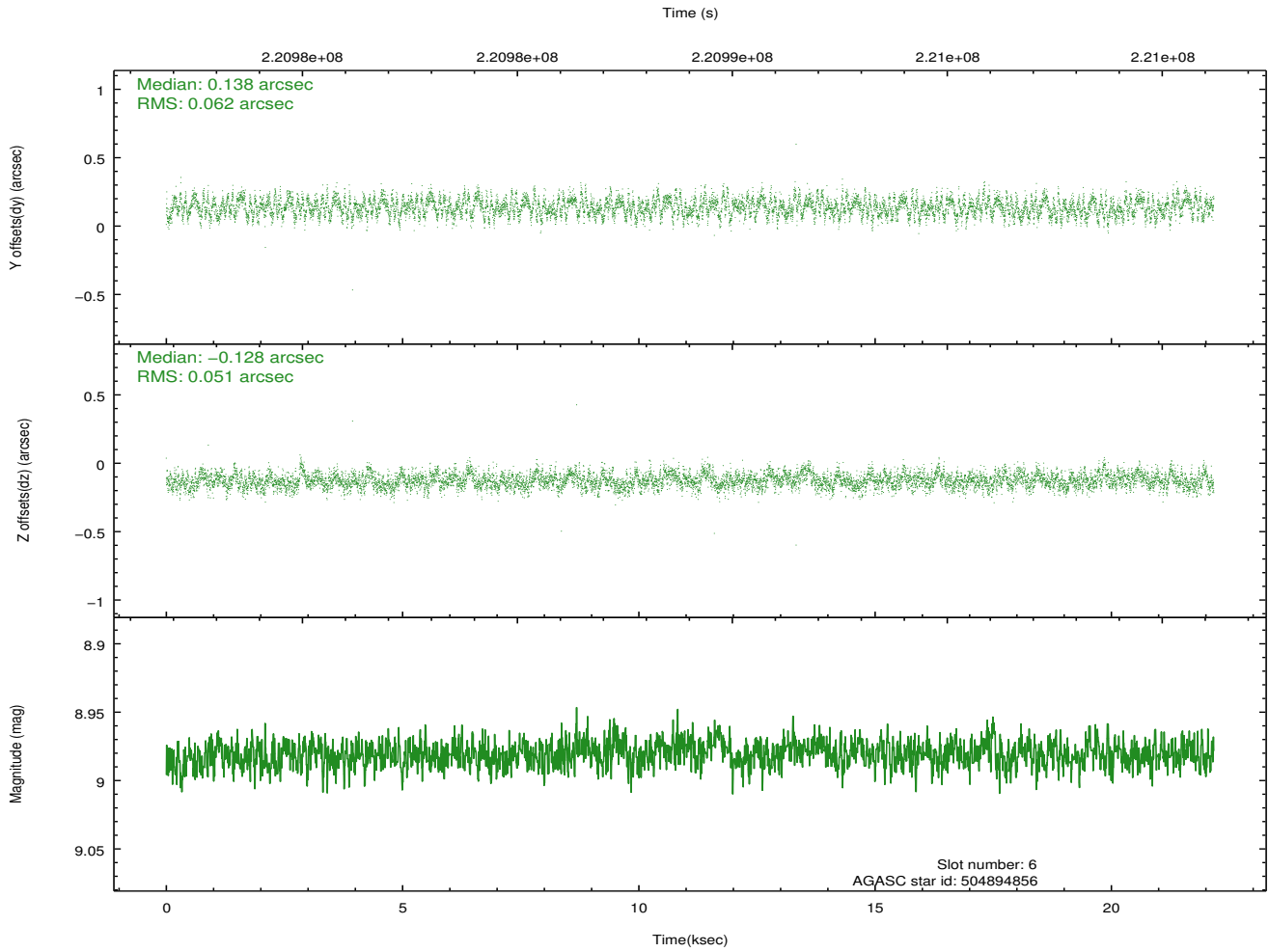
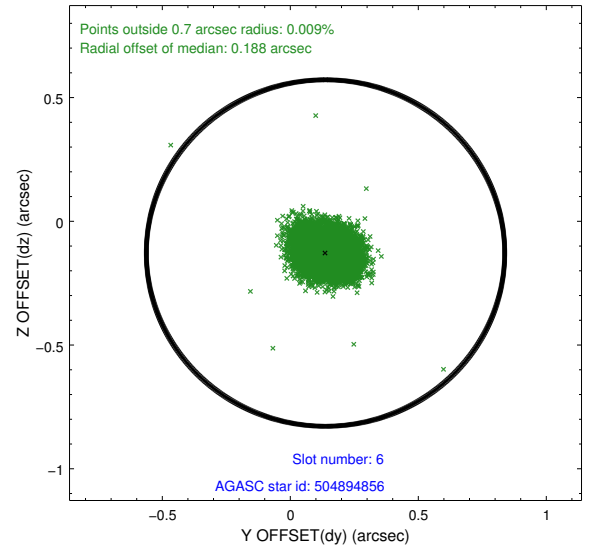
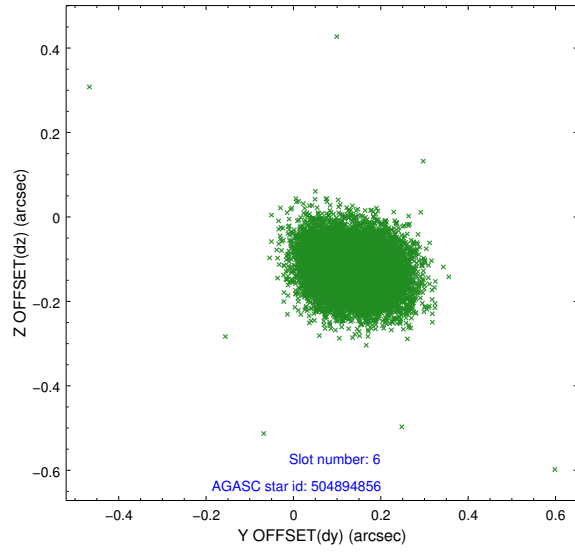
2.4.2 Slot 4



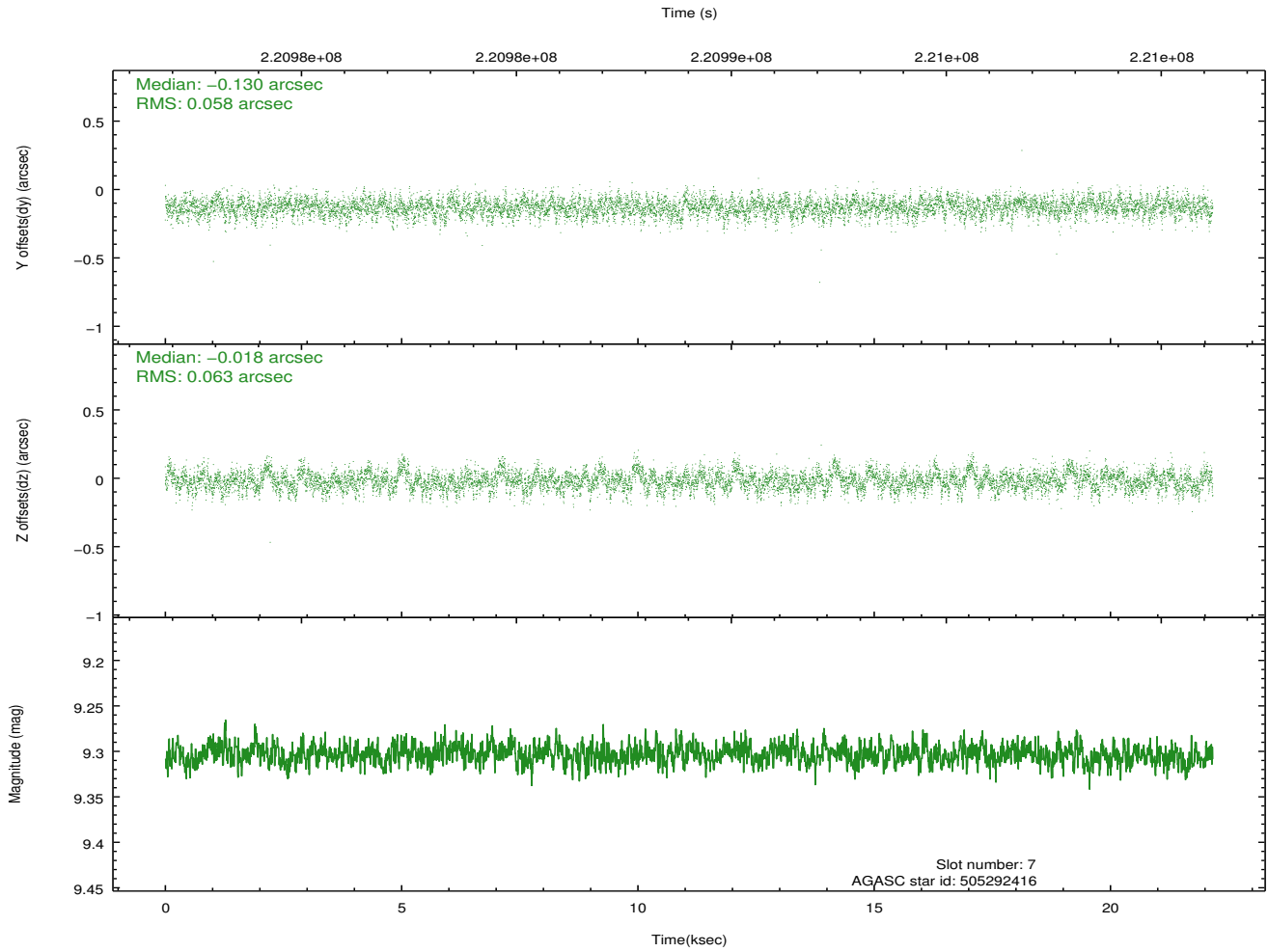
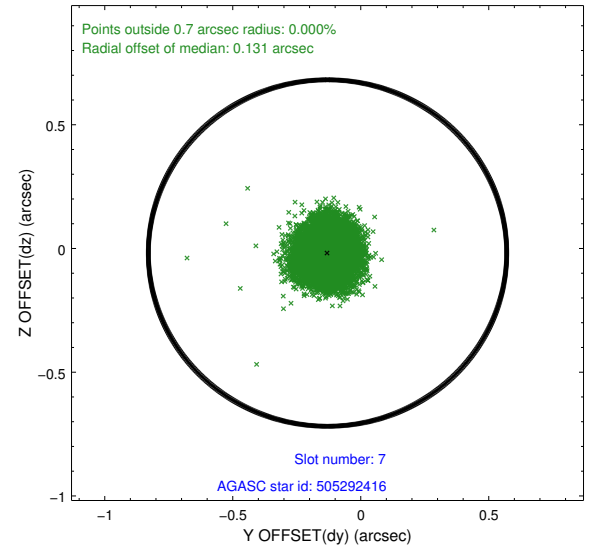
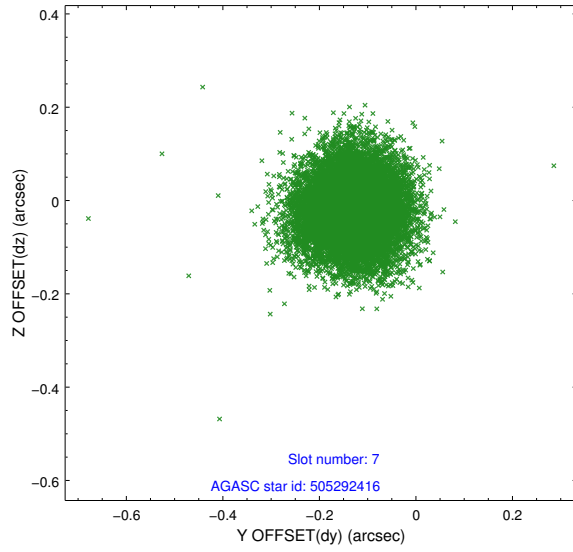
2.4.3 Slot 5



2.4.4 Slot 6

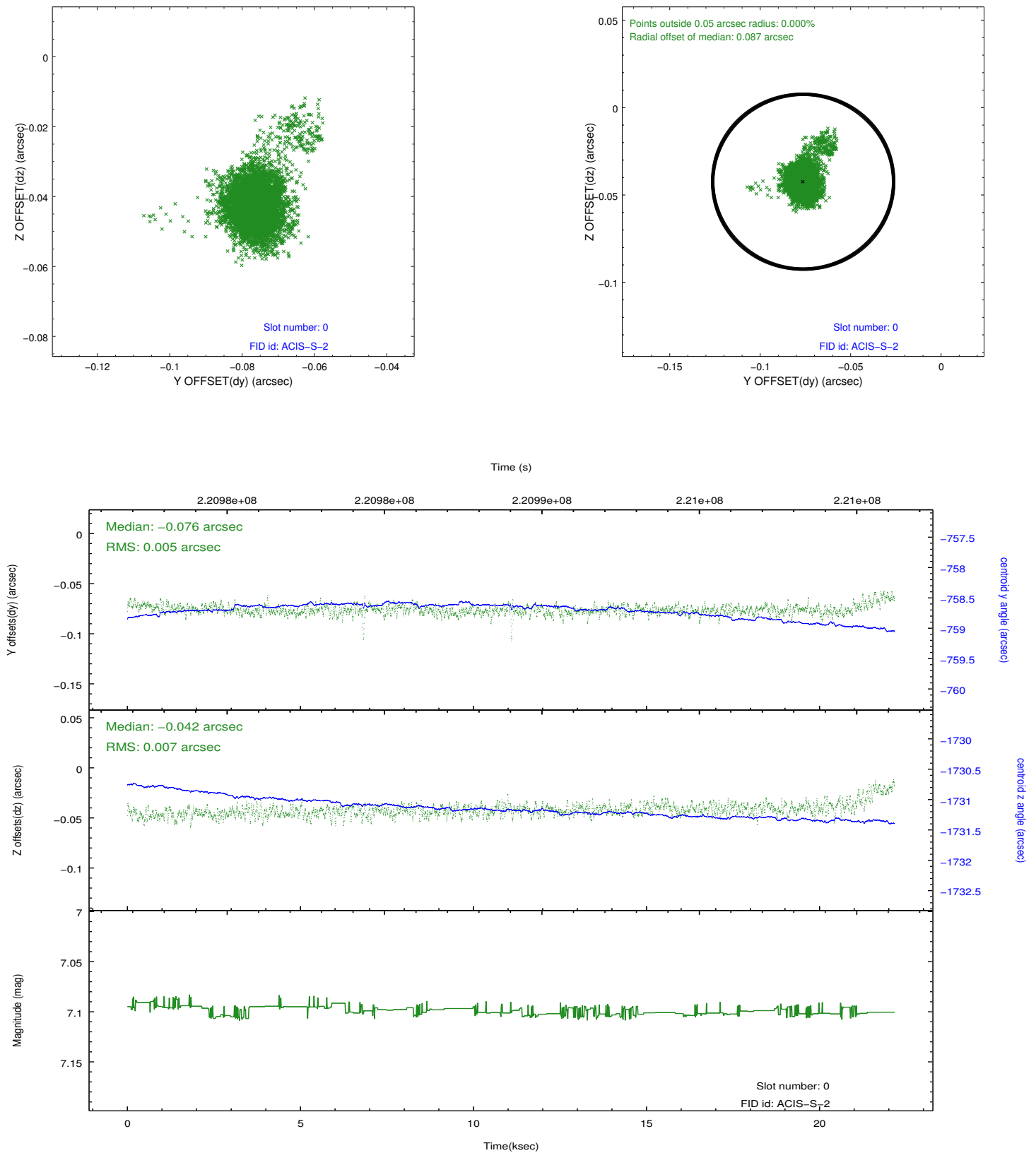


2.4.5 Slot 7

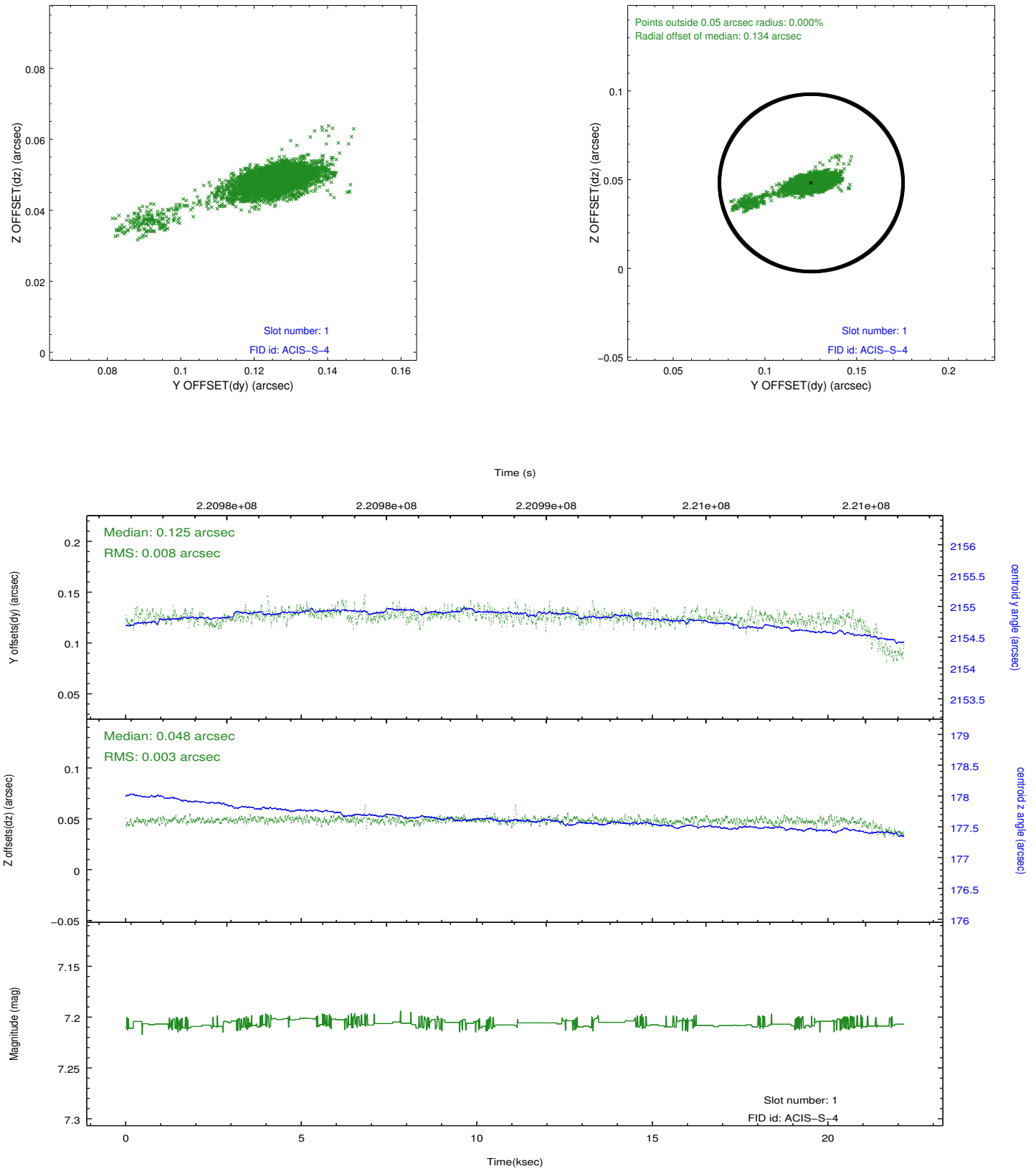


2.5 FID Slots

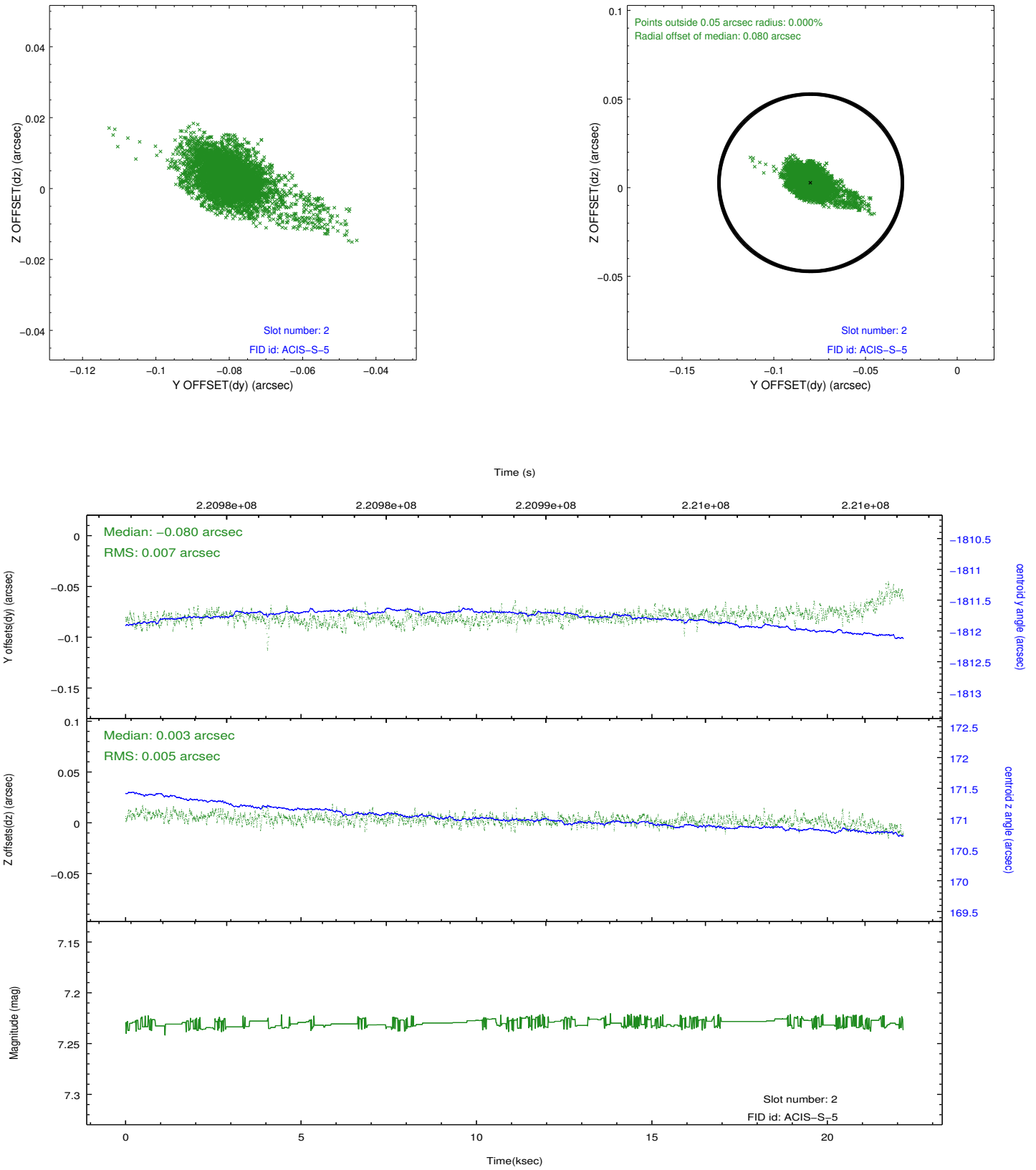
2.5.1 Slot 0



2.5.2 Slot 1



2.5.3 Slot 2



A Summary

A.1 Status

V&V Scientist	Jen Lauer
V&V Date (YYYY-MM-DD)	2013.01.08
V&V Edition	1
V&V Disposition and Status	OK
V&V Charge Time	22.13439

A.2 Comments