

V&V Reference Report

L2 ASCDS Version : 8.4.5

Observation 4227 - L2 Version 3
Chandra X-Ray Center

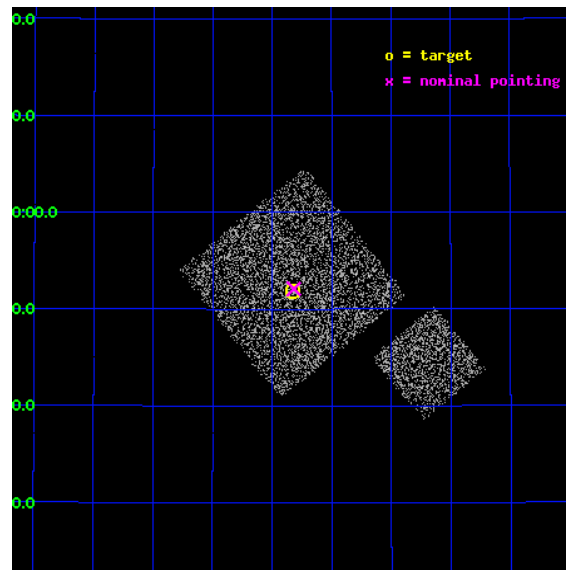
L2 Processing Date : Oct 24 2012

Contents

1	Front	2
2	OBI	3
2.1	OBI	3
2.1.1	Images	3
2.1.2	Bias	3
2.1.3	Parameters	4
2.1.4	Events	4
2.2	Compared Parameters	5
2.3	Aspect	6
2.4	Star Slots	9
2.4.1	Slot 3	9
2.4.2	Slot 4	10
2.4.3	Slot 5	11
2.4.4	Slot 6	12
2.4.5	Slot 7	13
2.5	FID Slots	14
2.5.1	Slot 0	14
2.5.2	Slot 1	15
2.5.3	Slot 2	16
A	Summary	17
A.1	Status	17
A.2	Comments	17

1 Front

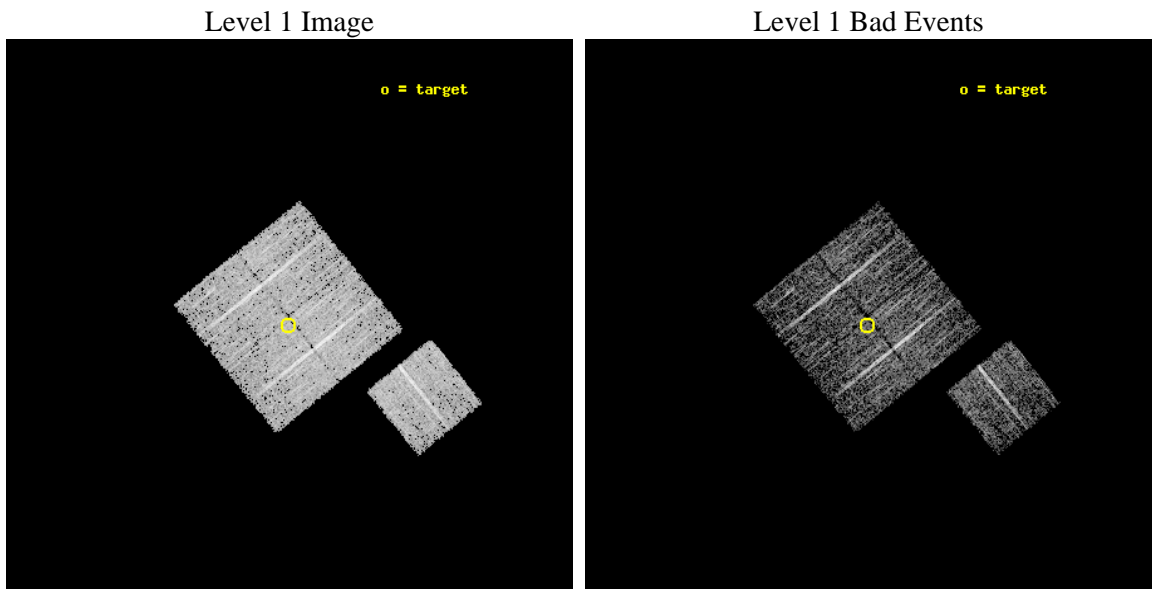
seq_num	900270	Sequence number
obs_id	4227	Observation id
title	A CHANDRA WIDE-FIELD SURVEY TO MAP THE COSMIC WEB AND INVESTIGATE THE EVOLUTION OF NUCLEAR ACCRETION	Proposal title
observer	Dr. Christine Jones	Principal investigator
object	SS2	Source name
dtcycle	0	
cycle	P	events from which exps? Prim/Second/Both
ra_targ	216.957163	Observer's specified target RA [deg]
dec_targ	33.864306	Observer's specified target Dec [deg]
ra_nom	216.95445817867	Nominal RA [deg]
dec_nom	33.868337210412	Nominal Dec [deg]
roll_nom	141.01024084593	Nominal Roll [deg]
revision	3	Processing version of data
ontime	4674.3581181467	Sum of GTIs [s]
livetime	4613.2841881207	Livetime [s]
ontime0	4671.0939880908	Sum of GTIs [s]
ontime1	4674.2760381401	Sum of GTIs [s]
ontime2	4674.3170781434	Sum of GTIs [s]
ontime3	4674.3581181467	Sum of GTIs [s]
ontime6	4674.1939581335	Sum of GTIs [s]
l2events	9191	Number of level 2 events



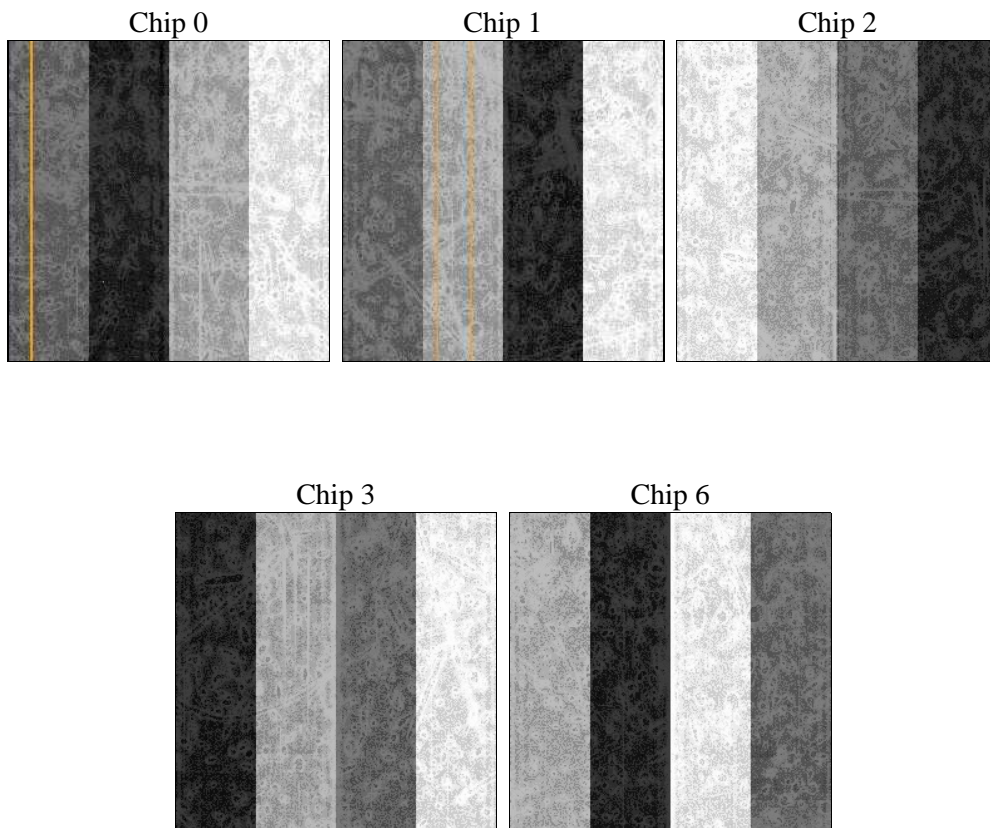
2 OBI

2.1 OBI

2.1.1 Images



2.1.2 Bias



2.1.3 Parameters

obi_num	0	Obi number	sched_exp_time	4900.000000	[s] Scheduled observation exposure time
ascdsver	8.4.5	Processing system revision	ontime	4674.3581181467	Sum of GTIs [s]
caldsver	4.5.2	 	ontime0	4671.0939880908	Sum of GTIs [s]
date	2012-10-24T23:44:48	Date and time of file creation	ontime1	4674.2760381401	Sum of GTIs [s]
revision	3	Processing version of data	ontime2	4674.3170781434	Sum of GTIs [s]
			ontime3	4674.3581181467	Sum of GTIs [s]
			ontime6	4674.1939581335	Sum of GTIs [s]
			l1events	116731	Number of level 1 events

2.1.4 Events

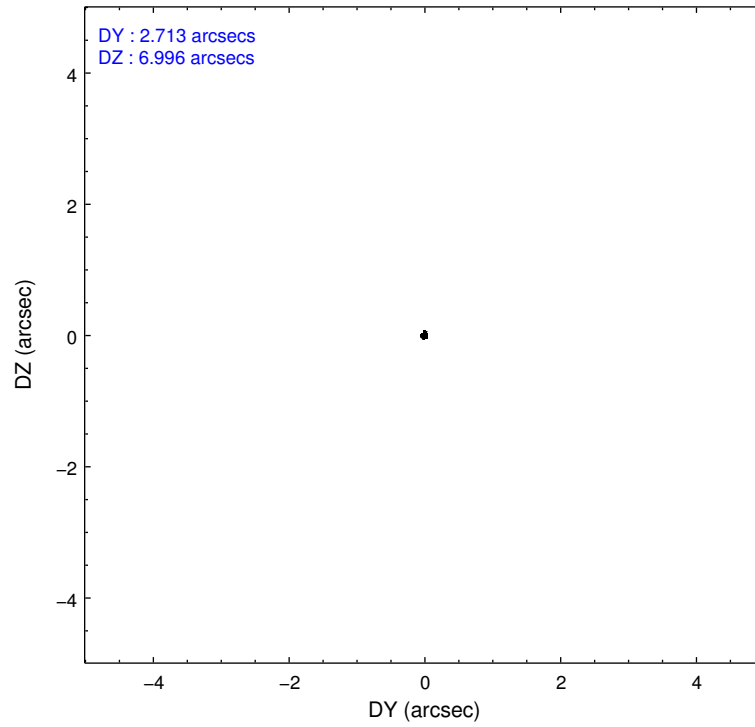
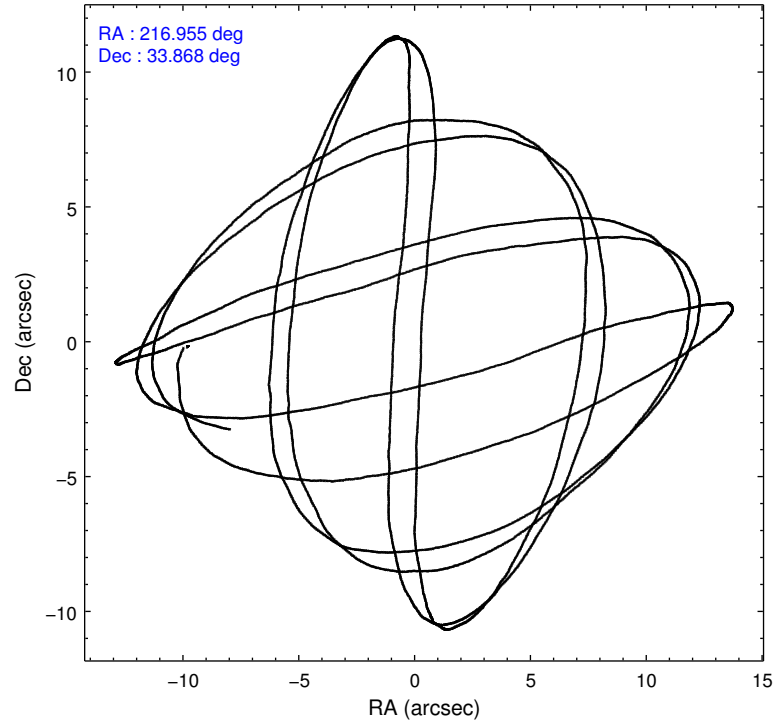
	ccd 0	ccd 1	ccd 2	ccd 3	ccd 6
level 1 events	22745	21990	25558	22903	23535
rejected events	20475	19652	23193	20773	21268
rejected %	90%	89%	90%	90%	90%

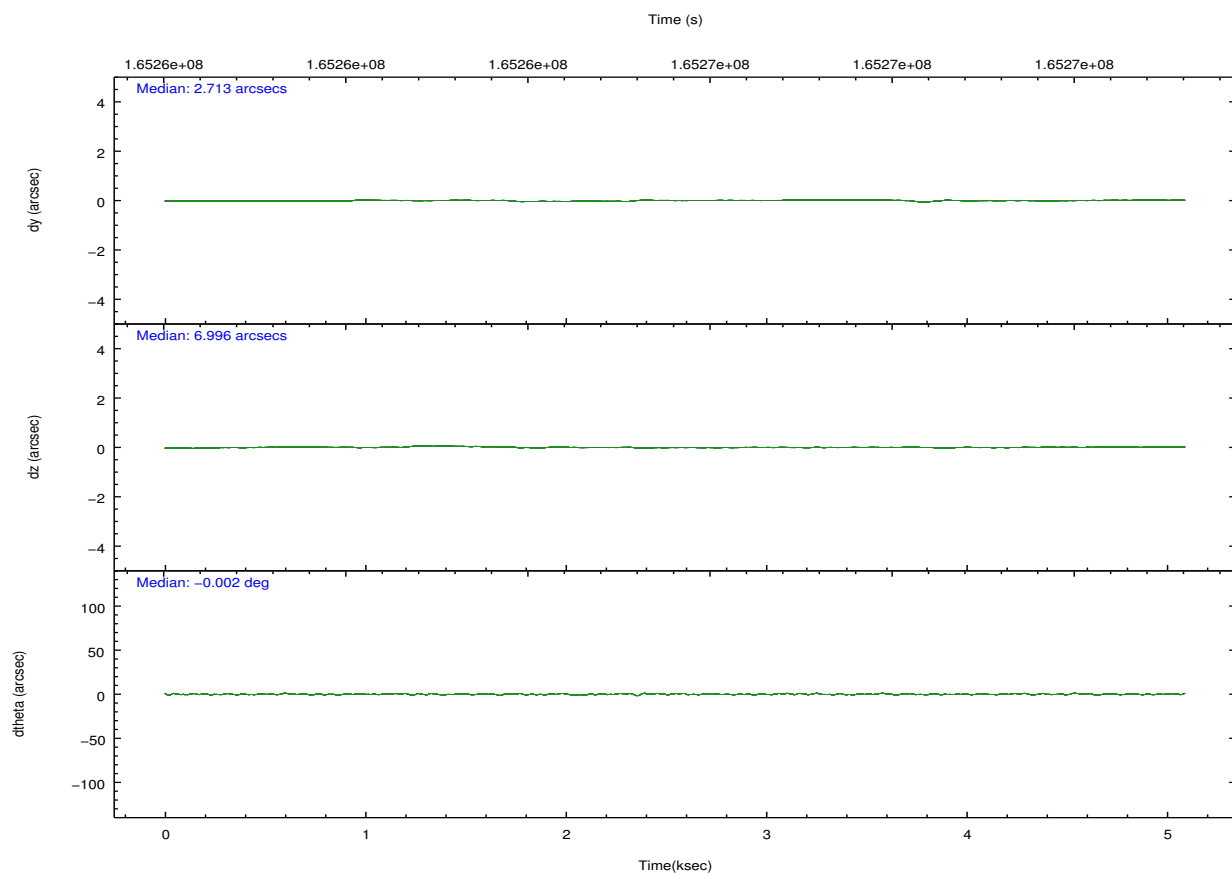
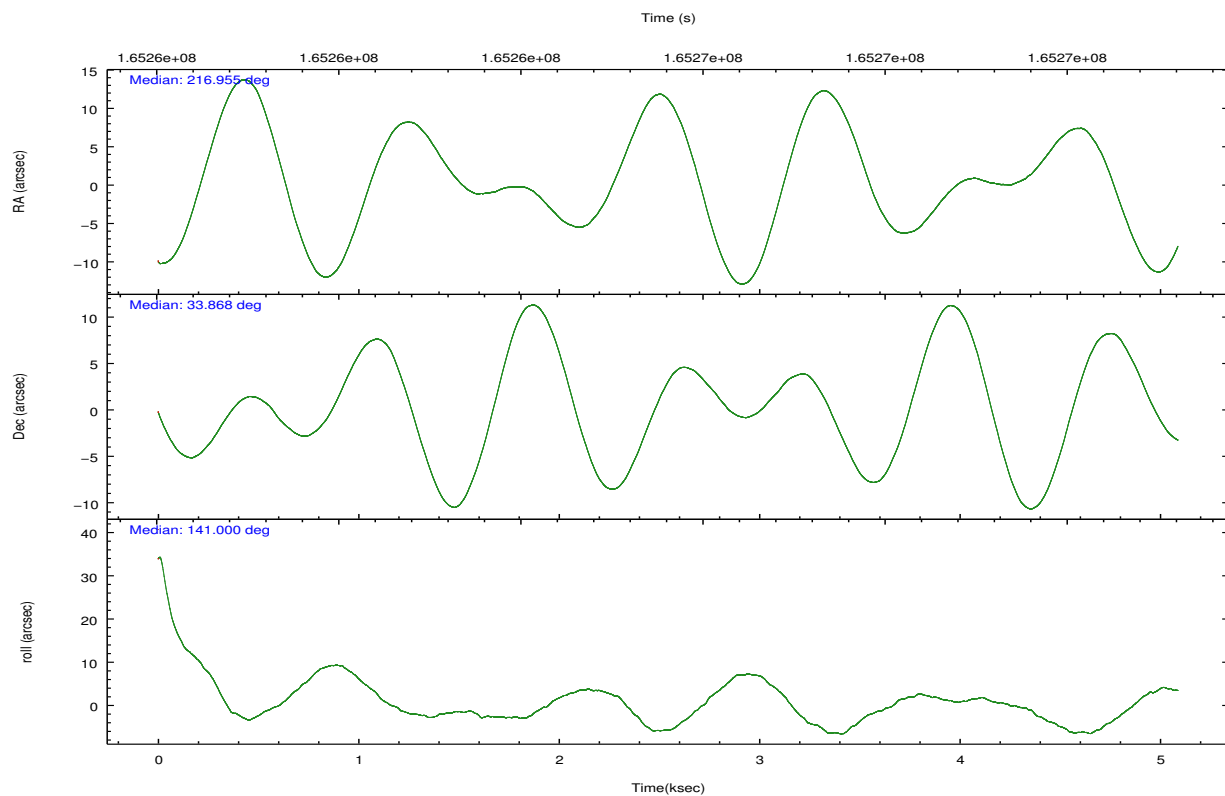
	ccd 0	ccd 1	ccd 2	ccd 3	ccd 6
grade 0 events	780	784	914	813	786
	3%	3%	3%	3%	3%
grade 1 events	8	7	12	10	9
	0%	0%	0%	0%	0%
grade 2 events	563	478	550	456	489
	2%	2%	2%	1%	2%
grade 3 events	254	303	279	237	264
	1%	1%	1%	1%	1%
grade 4 events	274	301	250	245	284
	1%	1%	0%	1%	1%
grade 5 events	666	716	628	769	781
	2%	3%	2%	3%	3%
grade 6 events	401	475	376	379	450
	1%	2%	1%	1%	1%
grade 7 events	19799	18926	22549	19994	20472
	87%	86%	88%	87%	86%

2.2 Compared Parameters

Parameter	Planned	Actual	Parameter	Planned	Actual
Instrument	ACIS	ACIS	Obspar format version number	7	7
Detector	ACIS-01236	ACIS-01236	Obspar file type	PREDICTED	ACTUAL
Grating	NONE	NONE	Obspar update status	NONE	UPDATED
Data mode	VFAINT	VFAINT	Number of optional ACIS chips dropped	0	0
Observation mode	POINTING	POINTING	On-chip summing requested	N	N
[deg] Pointing RA	216.987132	216.9544581786703	Subarray requested	NONE	NONE
[deg] Pointing Dec	33.864226	33.86833721041224	Alternating exposures requested	N	N
[deg] Pointing Roll	140.783301	141.0102408459275	[s] Primary exposure time	0.000000	3.1
[mm] SIM focus pos	-0.782348	-0.7809083437167272			
[mm] SIM defocus	0	0.001439871863259334			
[mm] SIM translation stage pos	-233.592463	-233.5874344608287			
[mm] SIM translation stage offset	0	-0.005018542100998502			
[s] Observation start time (MET)	165263450.184000	165263074.66957			
Observation start date	2003-03-28T18:29:46	2003-03-28T18:24:34			
[s] Observation end time (MET)	165268350.184000	165268484.61979			
Observation end date	2003-03-28T19:51:26	2003-03-28T19:54:44			
Read mode	TIMED	TIMED			

2.3 Aspect



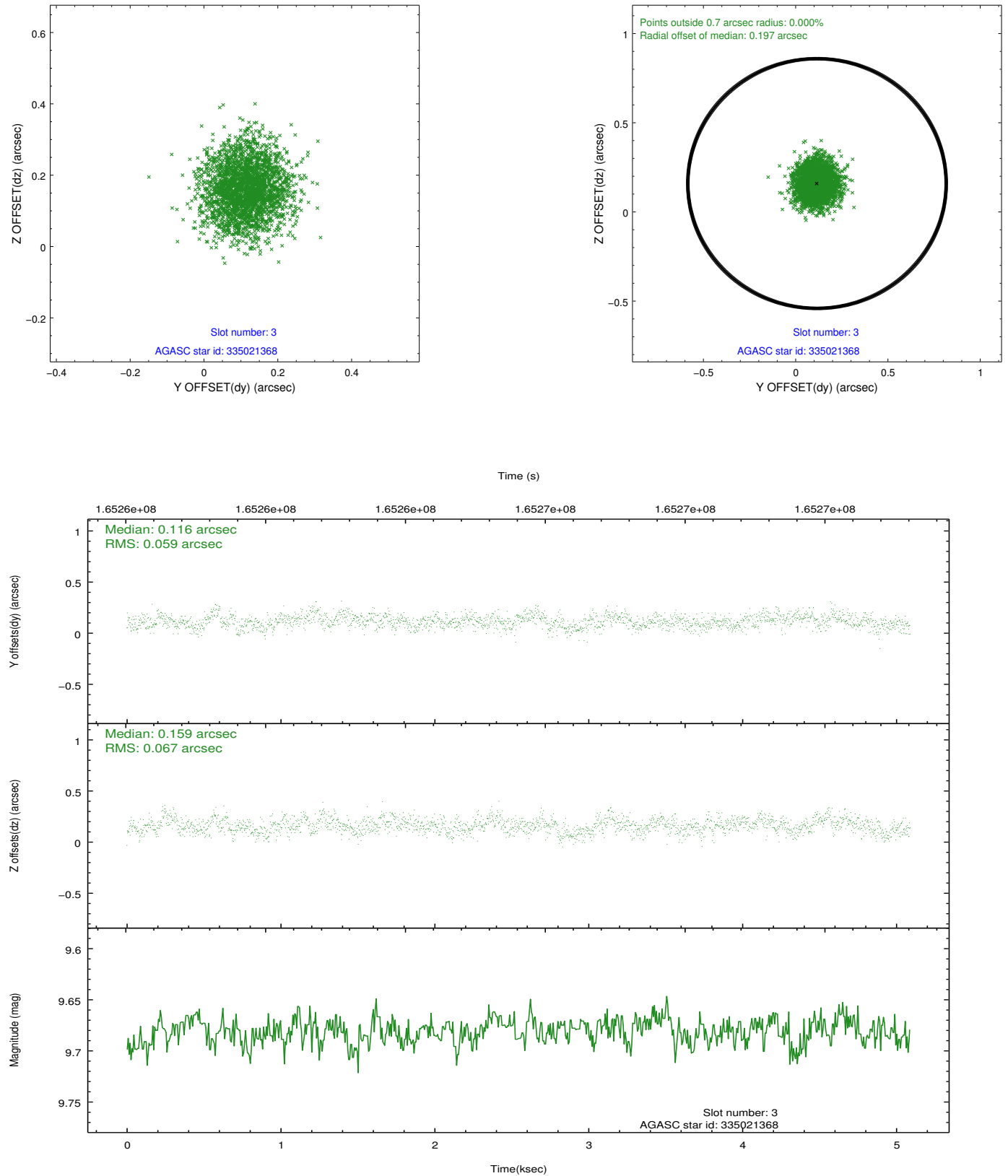


Slot Statistics

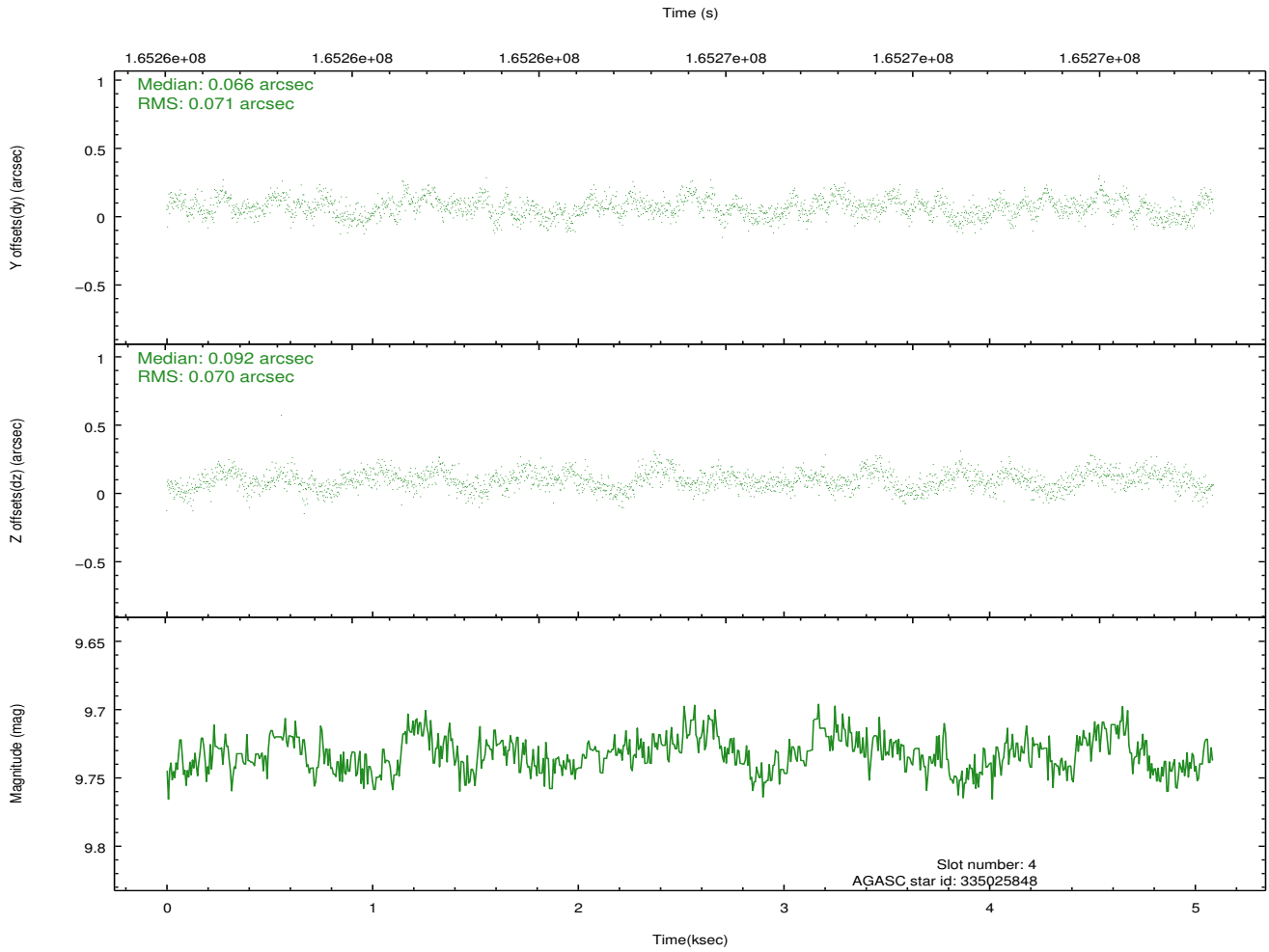
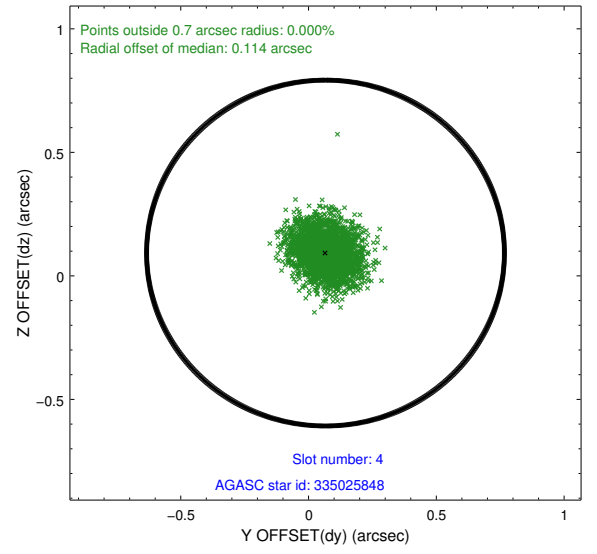
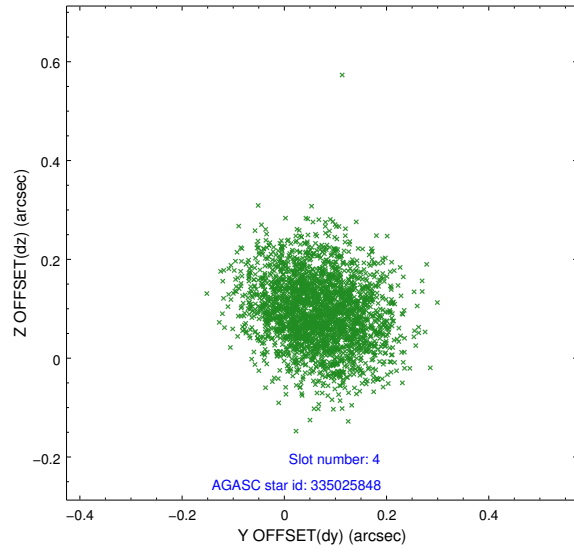
slot	status	id	mag	n_pts	med_dy	med_dz	dr1	dr2	ra	dec	mean_y	mean_z
0	FID	ACIS-I-1	7.25	1242	-0.048	-0.049	0.008	0.013	0.000000	0.000000	937.04	-830.44
1	FID	ACIS-I-4	7.18	1242	0.071	0.080	0.007	0.011	0.000000	0.000000	2157.88	1068.89
2	FID	ACIS-I-5	7.23	1242	-0.122	0.039	0.006	0.012	0.000000	0.000000	-1809.48	1068.08
3	GUIDE	335021368	9.68	2474	0.116	0.159	0.097	0.152	217.529643	33.934817	-1091.68	-1224.70
4	GUIDE	335025848	9.73	2476	0.066	0.092	0.108	0.169	217.530531	33.778292	-1452.88	-792.31
5	GUIDE	335029368	10.14	2482	-0.010	0.041	0.179	0.286	217.181018	33.065030	-2272.87	1858.27
6	GUIDE	335029808	9.08	2481	-0.108	-0.223	0.095	0.155	216.789548	33.180488	-1096.03	2283.42
7	GUIDE	335030384	8.87	2482	-0.054	-0.079	0.129	0.215	216.806407	34.722197	2367.41	-2054.04

2.4 Star Slots

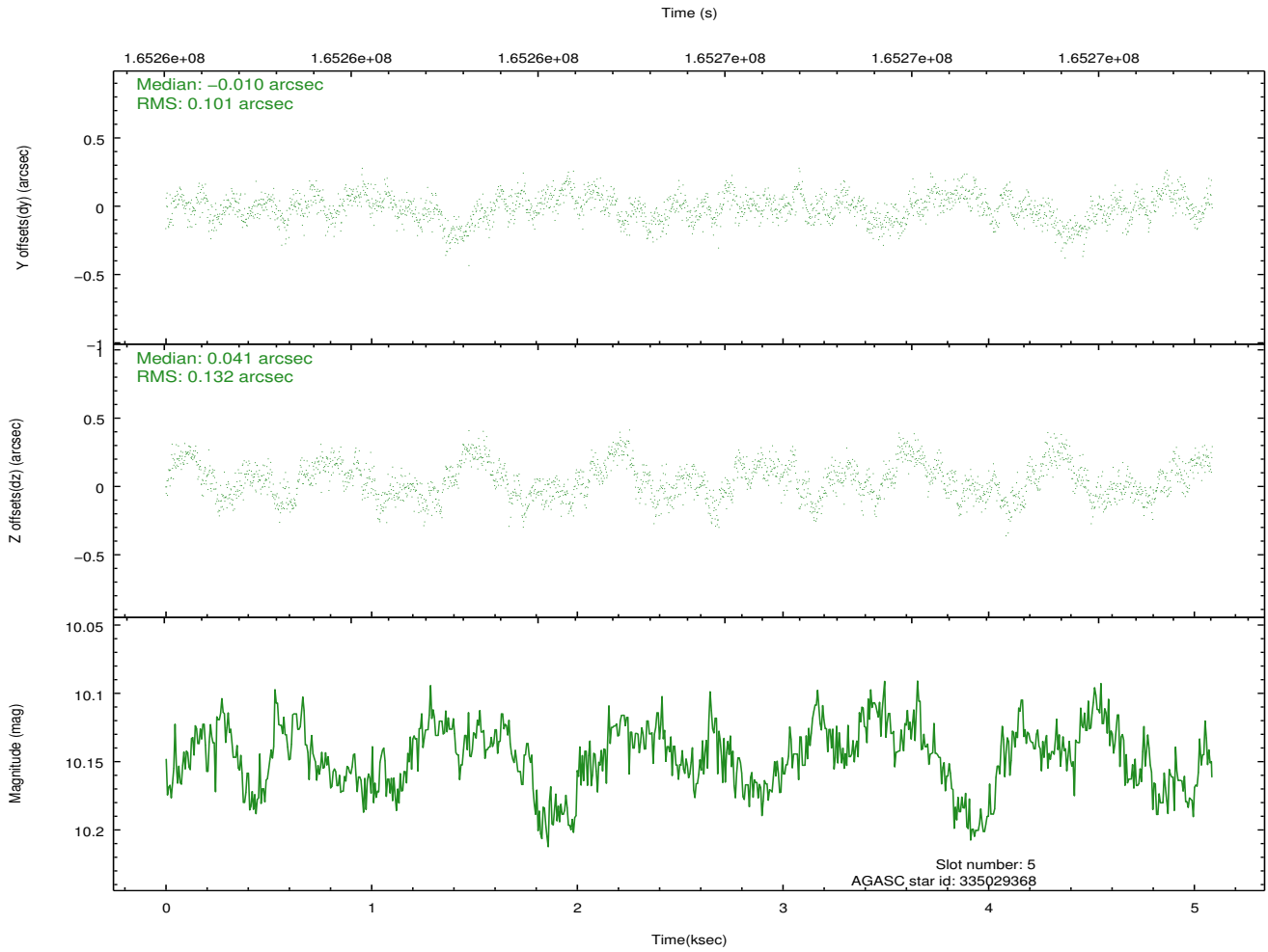
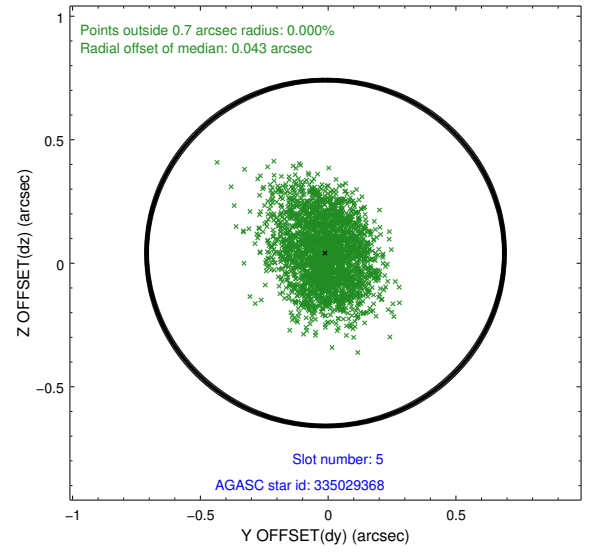
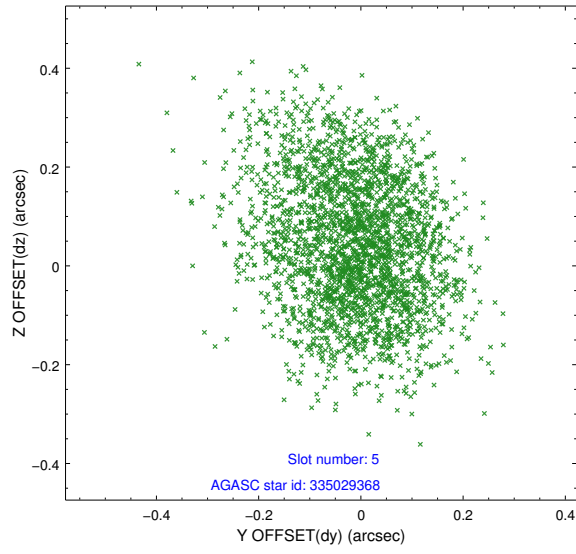
2.4.1 Slot 3



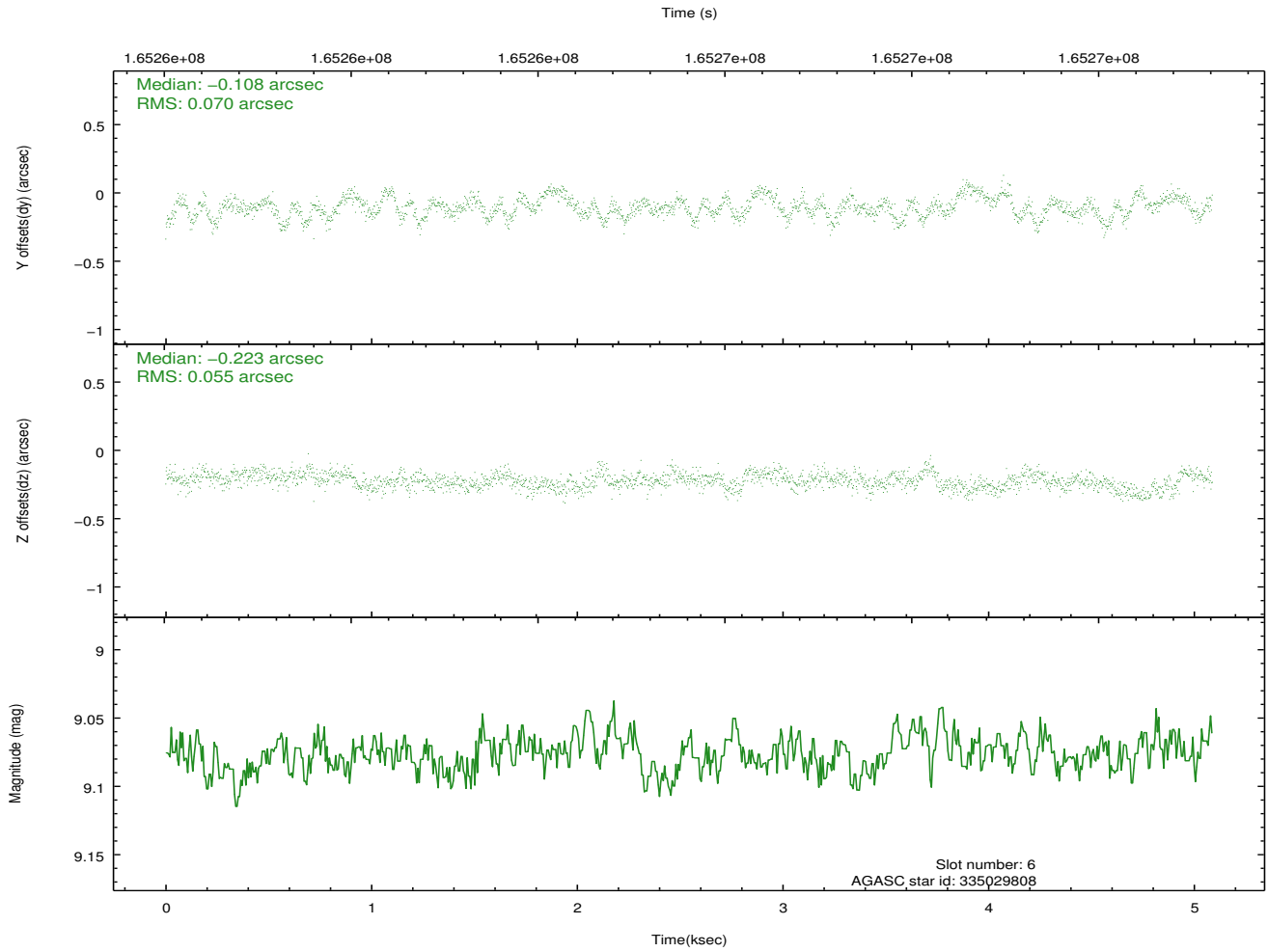
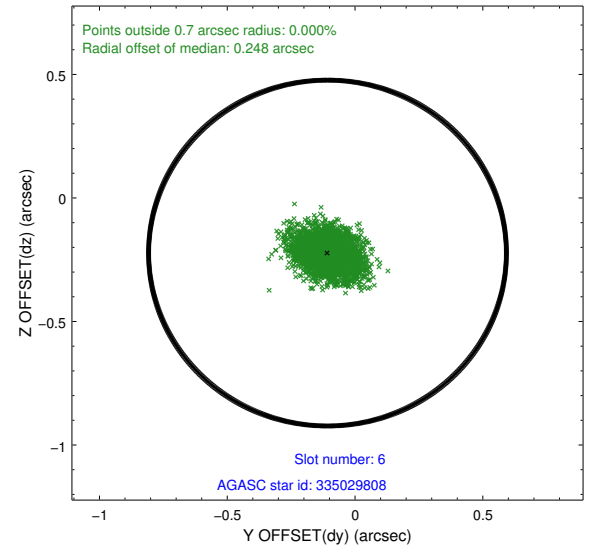
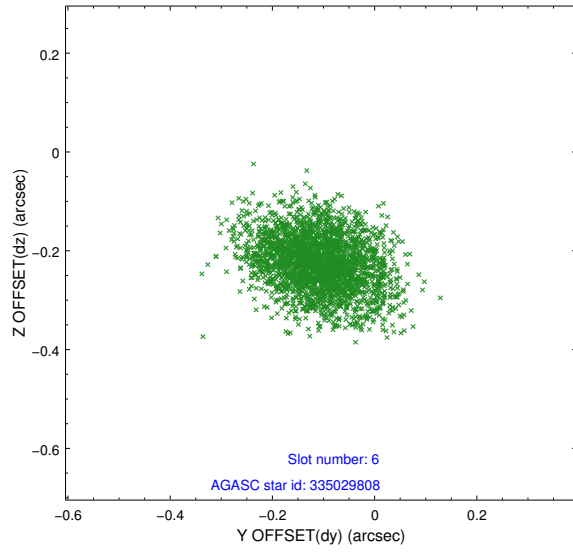
2.4.2 Slot 4



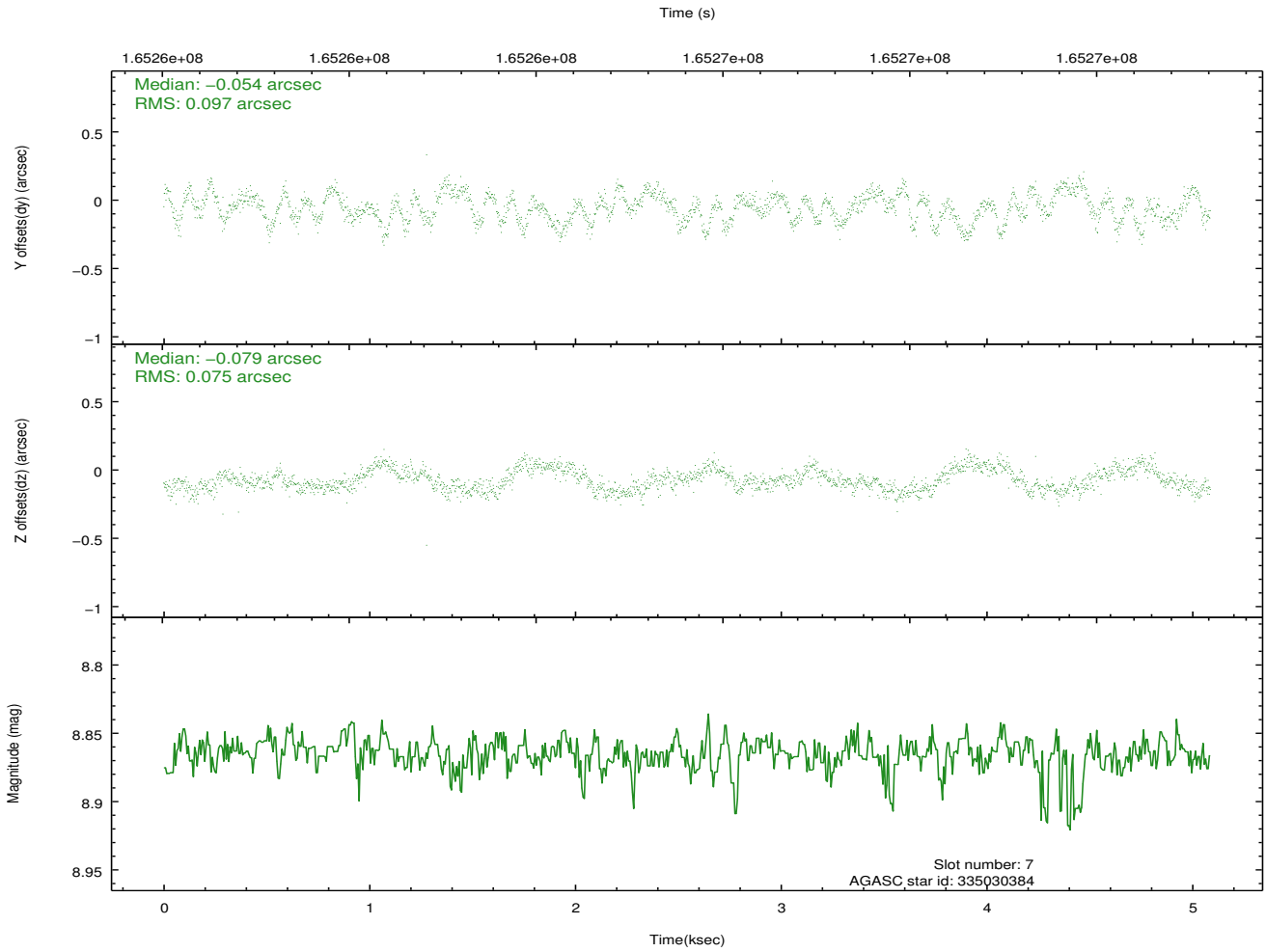
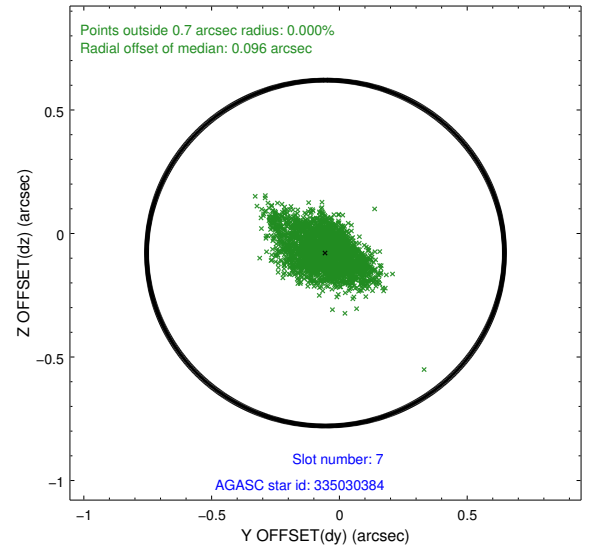
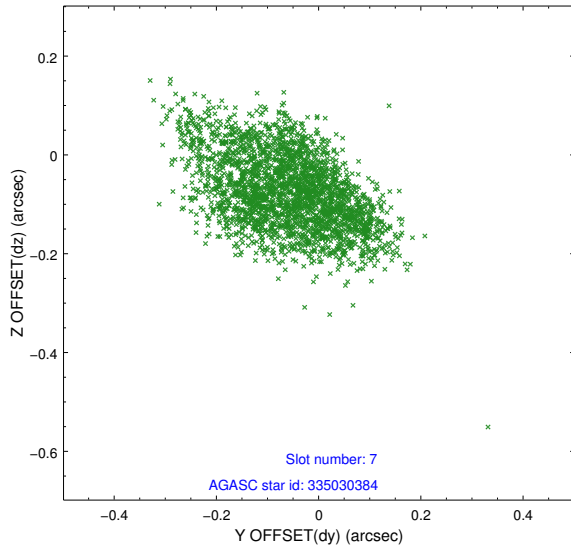
2.4.3 Slot 5



2.4.4 Slot 6

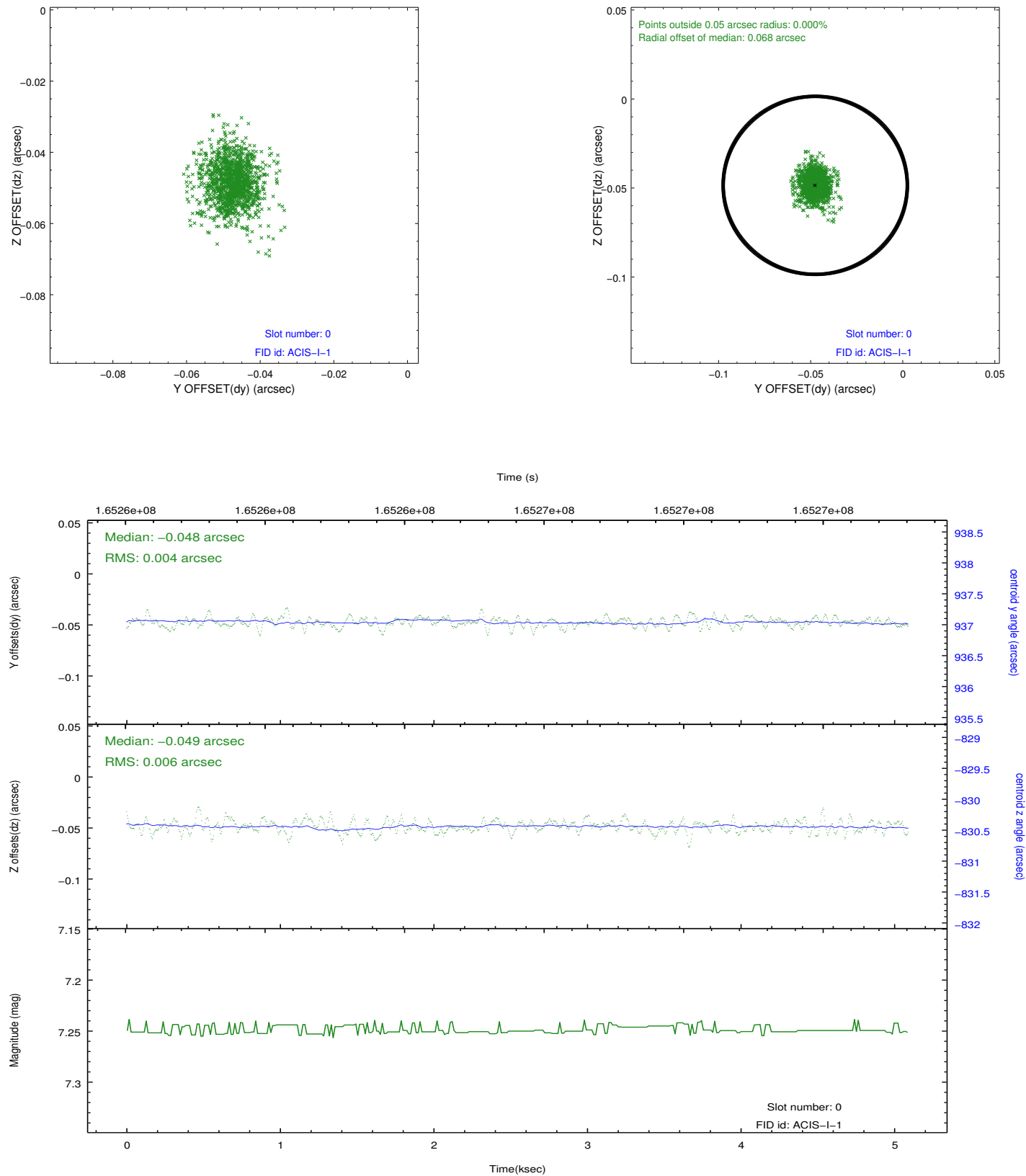


2.4.5 Slot 7

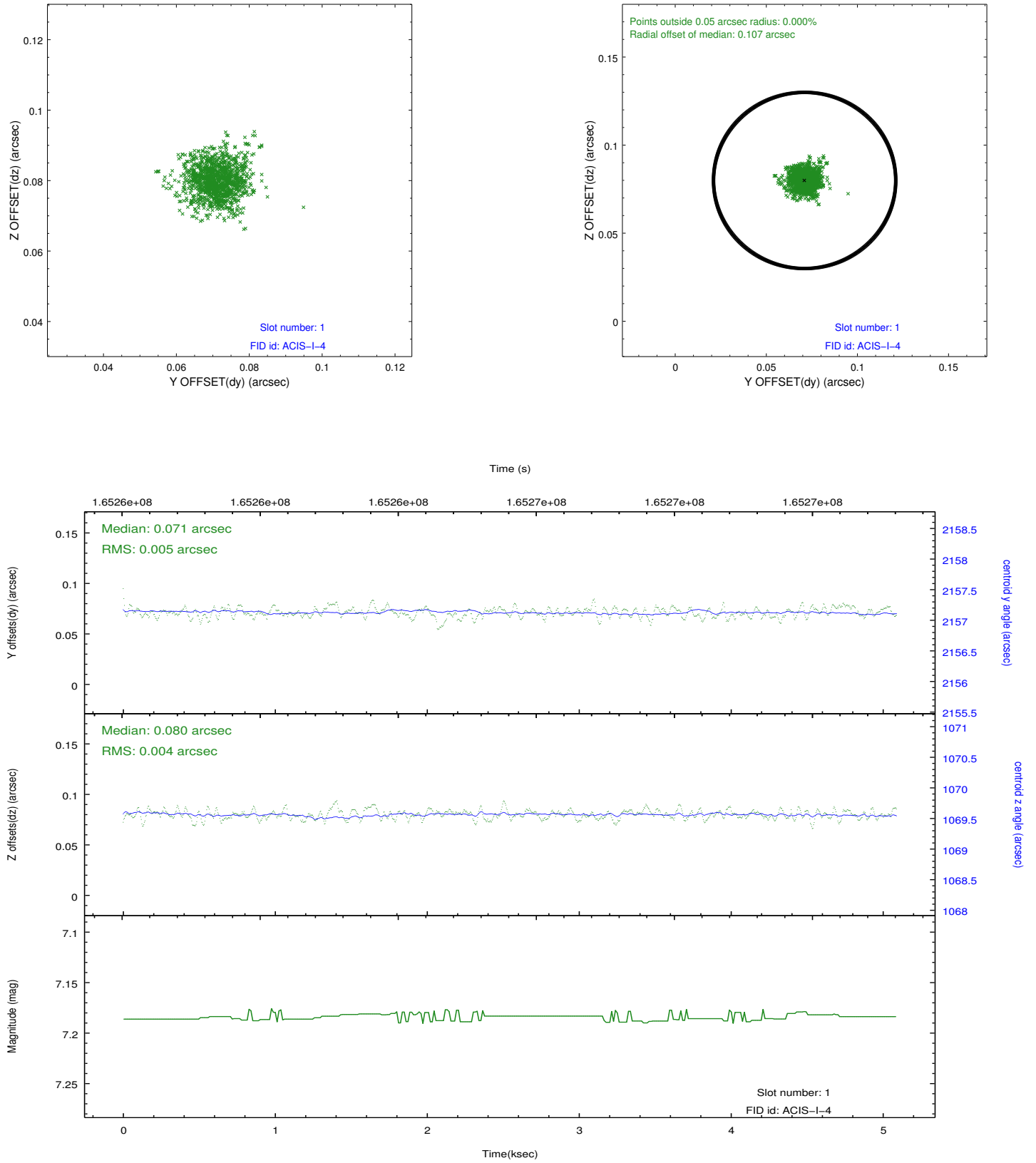


2.5 FID Slots

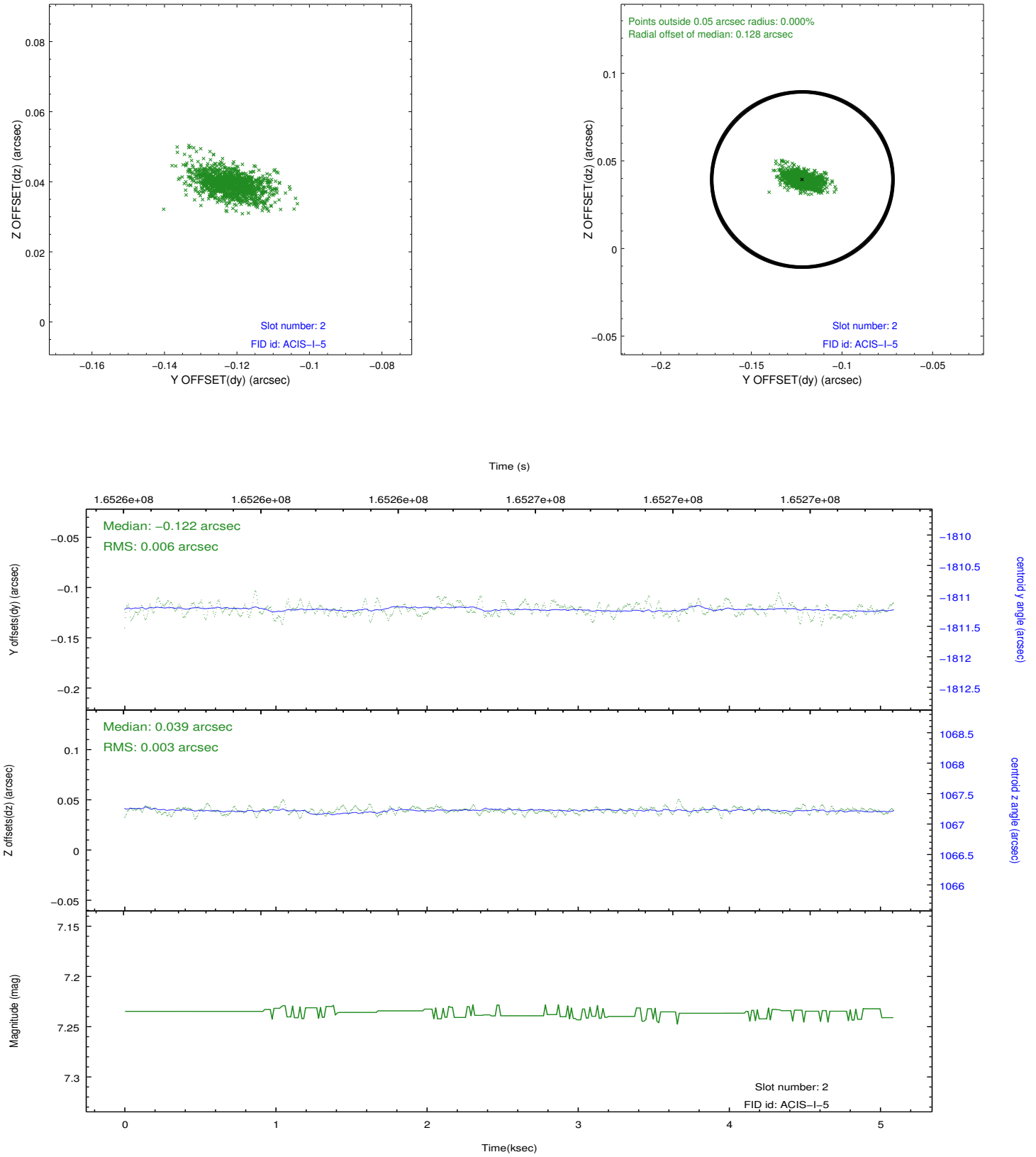
2.5.1 Slot 0



2.5.2 Slot 1



2.5.3 Slot 2



A Summary

A.1 Status

V&V Scientist	Jen Lauer
V&V Date (YYYY-MM-DD)	2012.11.09
V&V Edition	1
V&V Disposition and Status	OK
V&V Charge Time	4.674

A.2 Comments