

V&V Reference Report

L2 ASCDS Version : 7.6.9

Observation 3707 - L2 Version 001
Chandra X-Ray Center

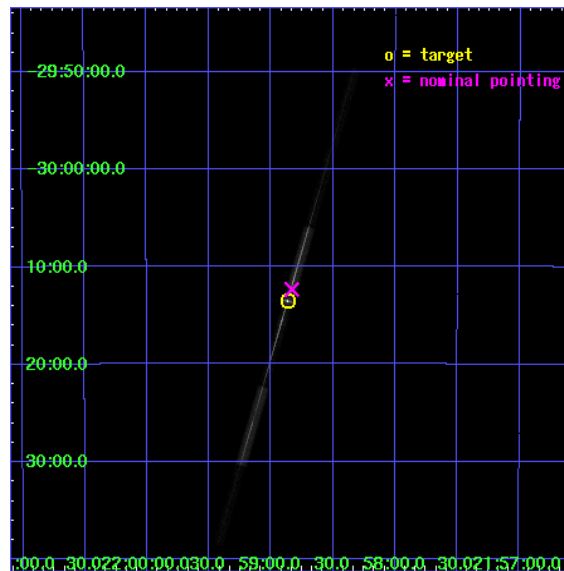
L2 Processing Date : Oct 17 2006

Contents

1	Front	2
2	OBI	3
2.1	OBI	3
2.1.1	Images	3
2.1.2	Bias	3
2.1.3	Parameters	4
2.1.4	Events	4
2.2	Compared Parameters	5
2.3	Aspect	6
2.4	Star Slots	9
2.4.1	Slot 3	9
2.4.2	Slot 4	10
2.4.3	Slot 5	11
2.4.4	Slot 6	12
2.4.5	Slot 7	13
2.5	FID Slots	14
2.5.1	Slot 0	14
2.5.2	Slot 1	15
2.5.3	Slot 2	16
3	Gratings	17
3.1	LETG Arm	17
A	Summary	19
A.1	Status	19
A.2	Comments	19

1 Front

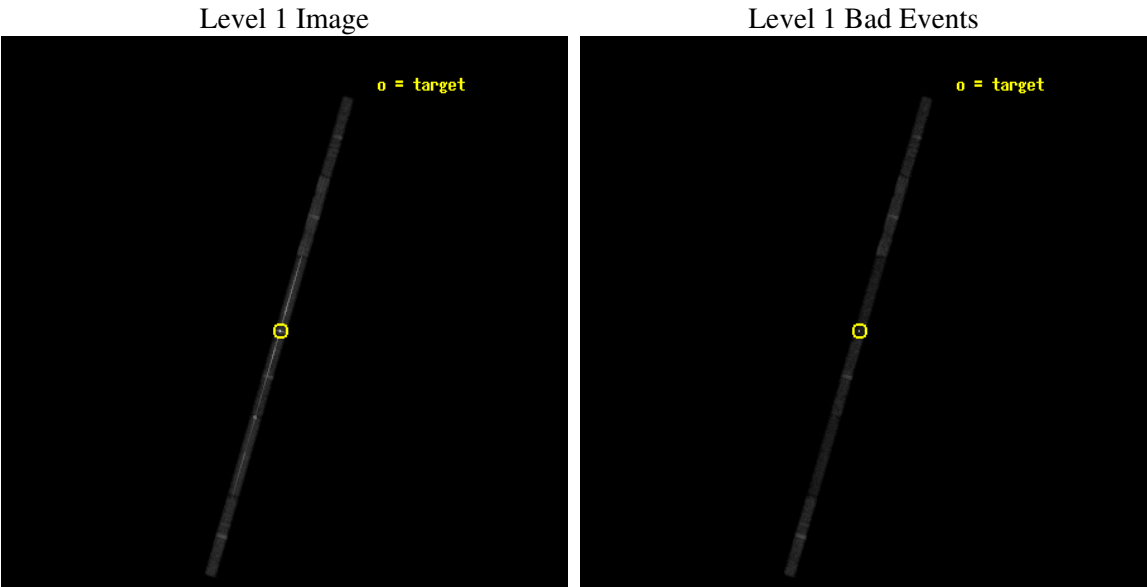
seq_num	790083
obs_id	3707
title	AO4 CALIBRATION OBSERVATIONS OF PKS2155-304
observer	Dr. CXC Calibration
object	PKS2155-304
dtcycle	0
cycle	P
ra_targ	329.716667
dec_targ	-30.225556
ra_nom	329.7080767653
dec_nom	-30.205899862499
roll_nom	286.30666479668
revision	2
ontime	28512.399514437
livetime	26933.336473207
ontime4	28512.399514437
ontime5	28512.399514437
ontime6	28512.399514437
ontime7	28512.399514437
ontime8	28512.399514437
ontime9	28512.399514437
l2events	131012



2 OBI

2.1 OBI

2.1.1 Images



2.1.2 Bias

Chip 4

Chip 5

Chip 6



Chip 7

Chip 8

Chip 9



2.1.3 Parameters

obi_num	1
ascdsver	7.6.9
caldbver	3.2.3
date	2006-10-13T15:47:28
revision	2

sched_exp_time	28000.000000
ontime	28513.388448626
ontime4	28513.388448626
ontime5	28513.388448626
ontime6	28513.388448626
ontime7	28513.388448626
ontime8	28513.388448626
ontime9	28513.388448626
l1events	306296

2.1.4 Events

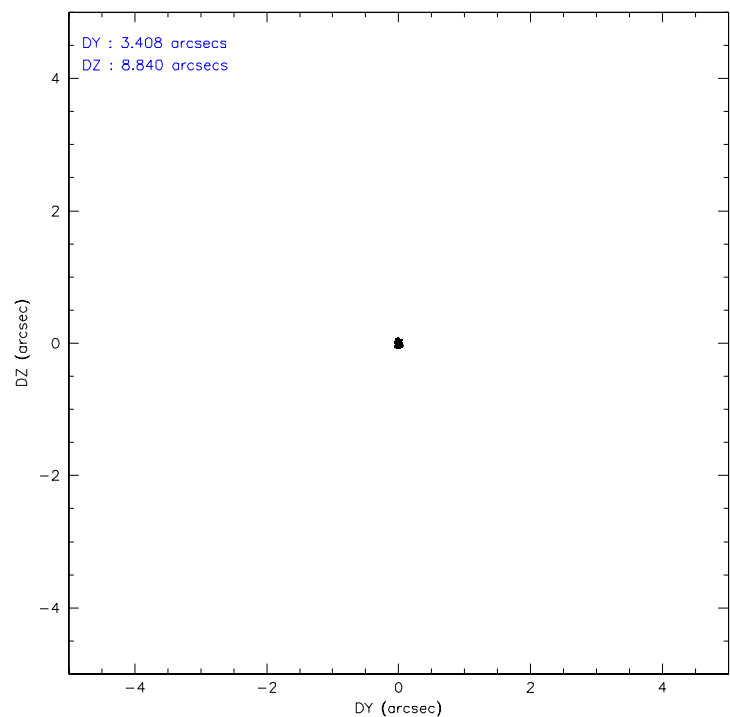
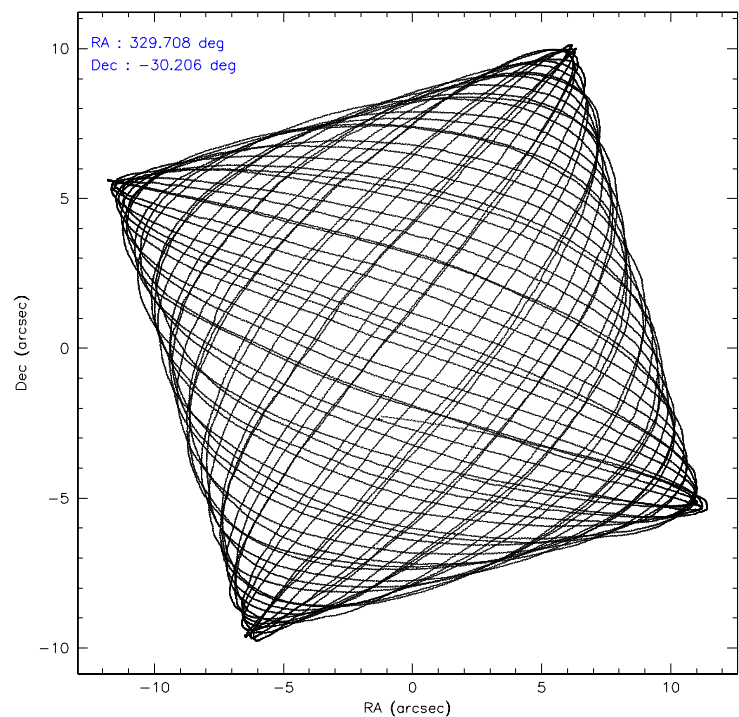
	ccd 4	ccd 5	ccd 6	ccd 7	ccd 8	ccd 9
level 1 events	35595	44478	48999	102359	45576	29289
rejected events	31304	18489	26224	26147	35495	25195
rejected %	87%	41%	53%	25%	77%	86%

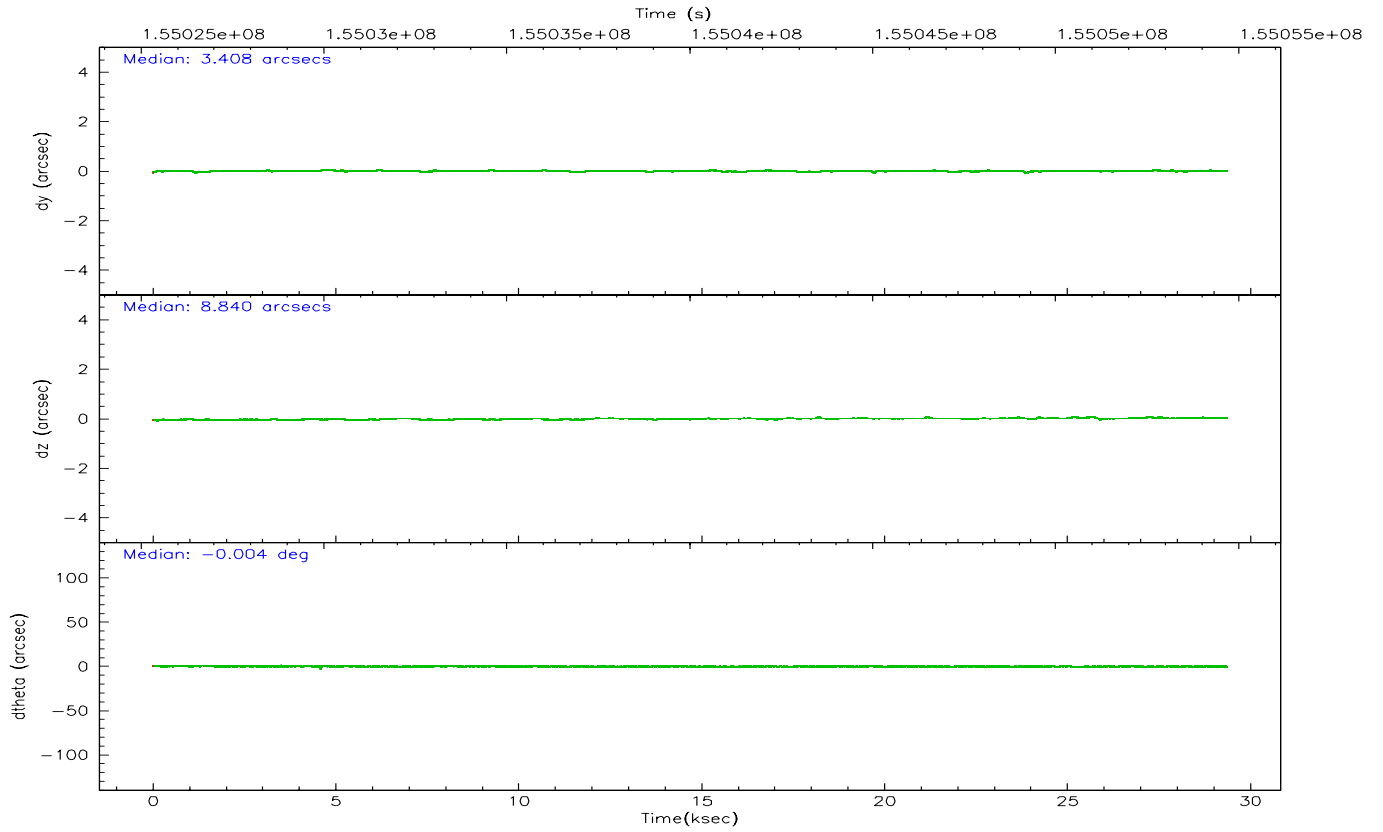
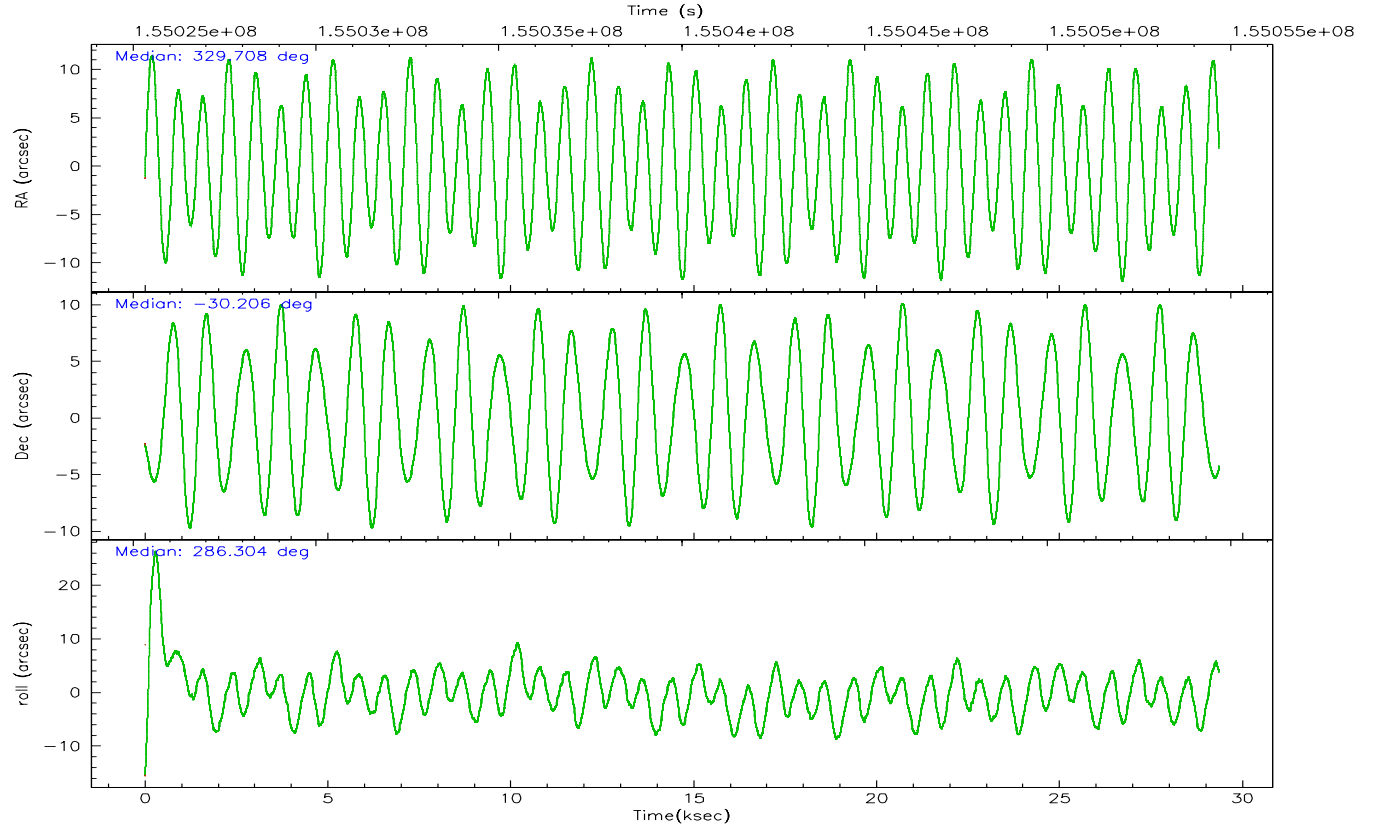
	ccd 4	ccd 5	ccd 6	ccd 7	ccd 8	ccd 9
grade 0 events	1829	8717	17324	19462	3913	1794
	5%	19%	35%	19%	8%	6%
grade 1 events	8	131	27	857	17	10
	0%	0%	0%	0%	0%	0%
grade 2 events	695	5656	2384	18773	1601	602
	1%	12%	4%	18%	3%	2%
grade 3 events	597	1485	1101	8384	1066	604
	1%	3%	2%	8%	2%	2%
grade 4 events	580	1557	1083	8209	1066	573
	1%	3%	2%	8%	2%	1%
grade 5 events	904	2166	952	5710	1243	930
	2%	4%	1%	5%	2%	3%
grade 6 events	590	8574	883	21388	2435	521
	1%	19%	1%	20%	5%	1%
grade 7 events	30392	16192	25245	19576	34235	24255
	85%	36%	51%	19%	75%	82%

2.2 Compared Parameters

Parameter	Planned	Actual	Parameter	Planned	Actual
Instrument	ACIS	ACIS	Obspar format version number	6	6
Detector	ACIS-456789	ACIS-456789	Obspar file type	PREDICTED	ACTUAL
Grating	LETG	LETG	Obspar update status	NONE	UPDATED
Data mode	FAINT	FAINT	Number of optional ACIS chips dropped	0	0
Observation mode	POINTING	POINTING	On-chip summing requested	N	N
Pointing RA	329.684981	329.7080767652963	Subarray requested	CUSTOM	1/8
Pointing Dec	-30.187327	-30.20589986249933	Subarray start row	113	113
Pointing Roll	286.138427	286.3066647966759	Subarray row count	128	128
SIM focus pos (mm)	-0.684267	-0.6828225247311905	Alternating exposures requested	N	N
SIM defocus (mm)	0	0.001444936568705701	Primary exposure time	0.000000	0.7
SIM translation stage pos (mm)	-182.132523	-182.1370004450064			
SIM translation stage offset (mm)	-8	-7.995522138001405			
Observation start time	155026694.184000	155024817.66536			
Observation start date	2002-11-30T06:57:10	2002-11-30T06:26:57			
Observation end time	155054694.184000	155054908.59161			
Observation end date	2002-11-30T14:43:50	2002-11-30T14:48:28			
Read mode	TIMED	TIMED			

2.3 Aspect



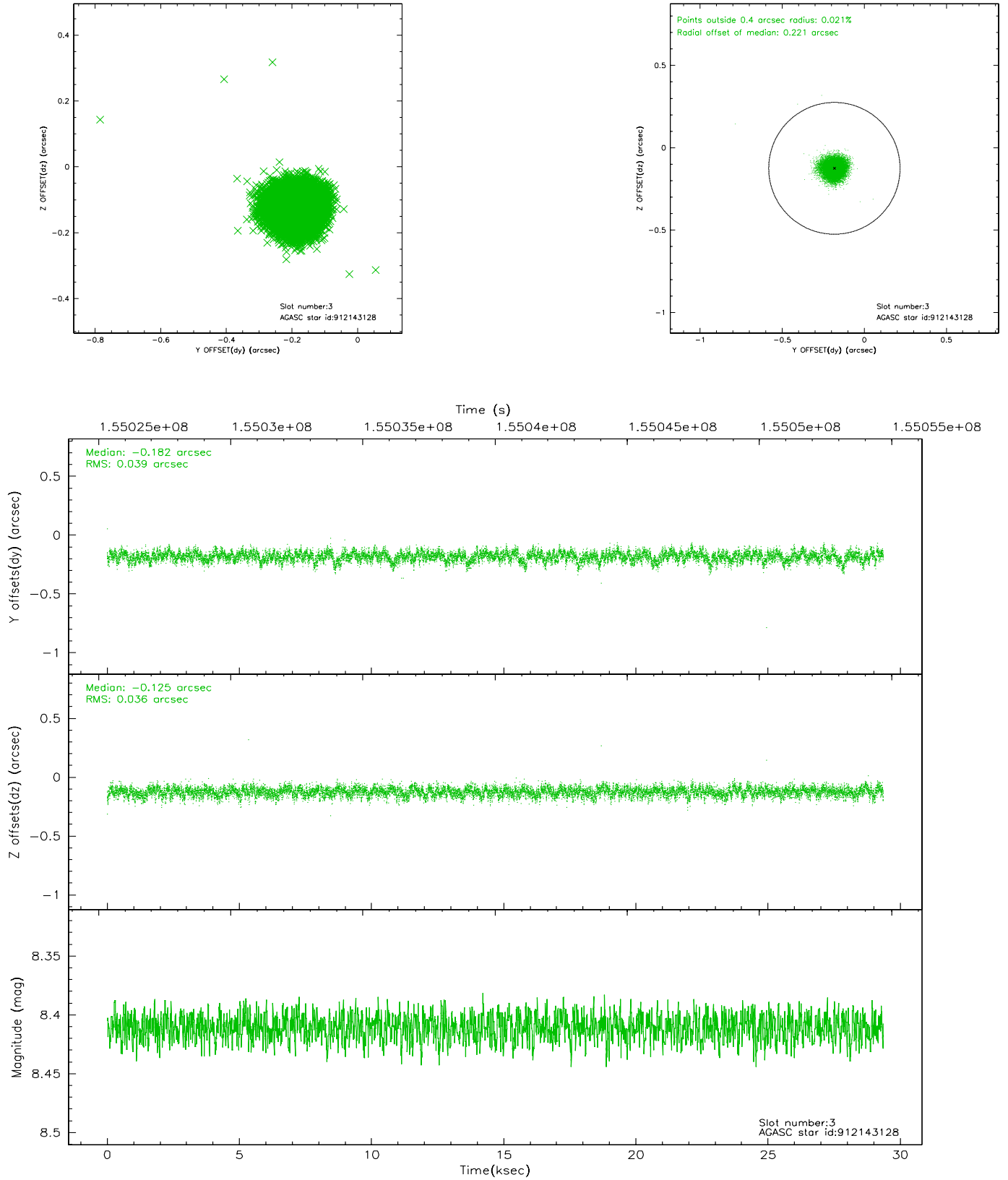


Slot Statistics

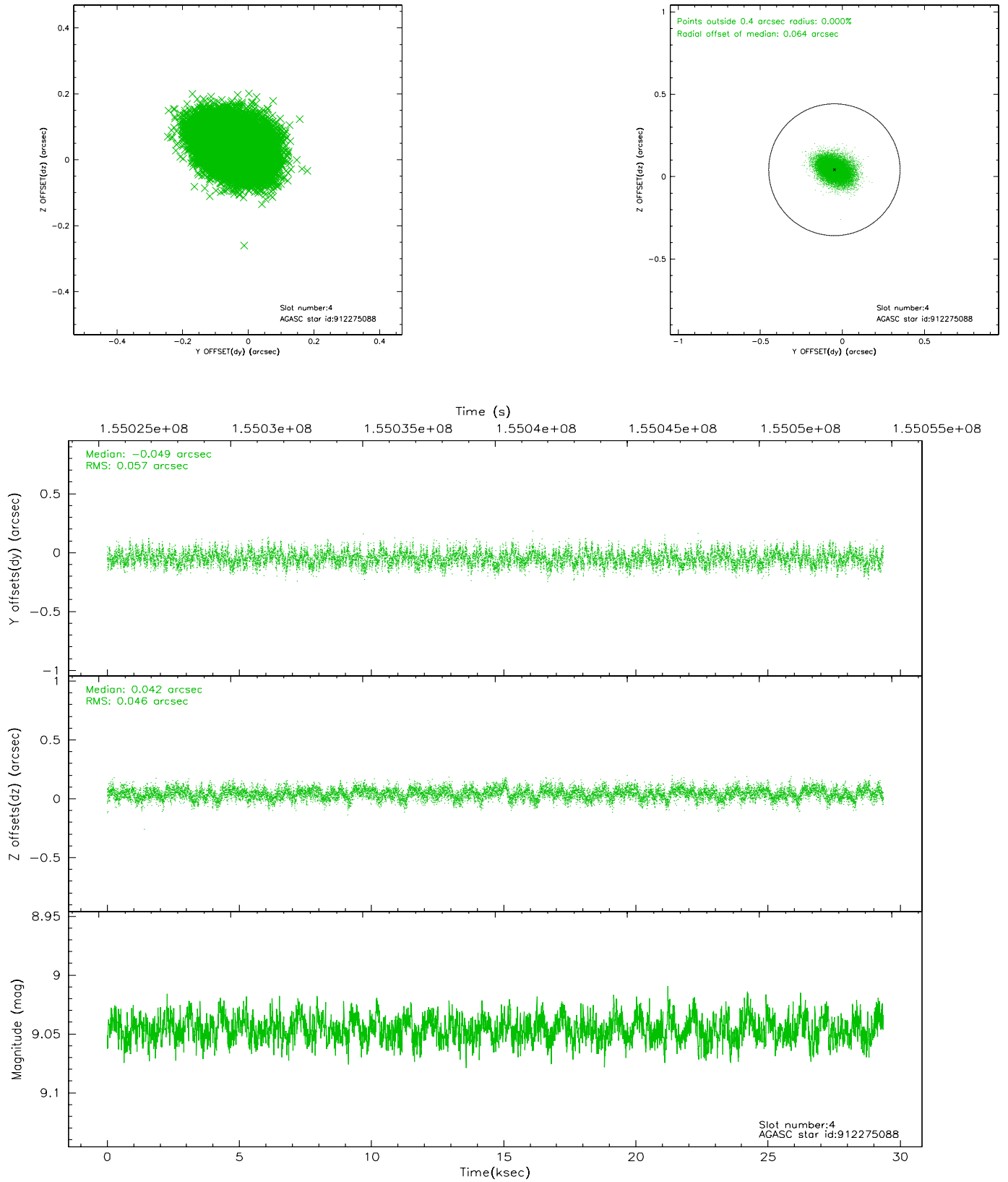
slot	status	id	mag	n_pts	med_dy	med_dz	dr1	dr2	ra	dec	mean_y	mean_z
0	FID	ACIS-S-2	7.09	7163	-0.033	-0.077	0.007	0.011	0.000000	0.000000	-755.50	-1894.85
1	FID	ACIS-S-4	7.18	7163	0.028	0.036	0.006	0.011	0.000000	0.000000	2157.78	13.65
2	FID	ACIS-S-5	7.23	7163	-0.026	0.049	0.007	0.011	0.000000	0.000000	-1808.25	7.39
3	GUIDE	912143128	8.41	14318	-0.182	-0.125	0.056	0.091	328.924992	-29.706140	-2316.22	-1803.54
4	GUIDE	912275088	9.05	14319	-0.049	0.042	0.077	0.127	329.619228	-29.738698	-1608.36	251.51
5	GUIDE	981468016	9.01	14323	0.030	-0.077	0.109	0.174	328.842457	-30.034984	-1247.01	-2372.49
6	GUIDE	981468128	9.36	14321	0.130	0.036	0.103	0.167	329.756350	-30.158334	-38.00	242.50
7	GUIDE	981478152	9.41	14317	0.069	0.130	0.103	0.170	329.415589	-30.057192	-681.93	-676.07

2.4 Star Slots

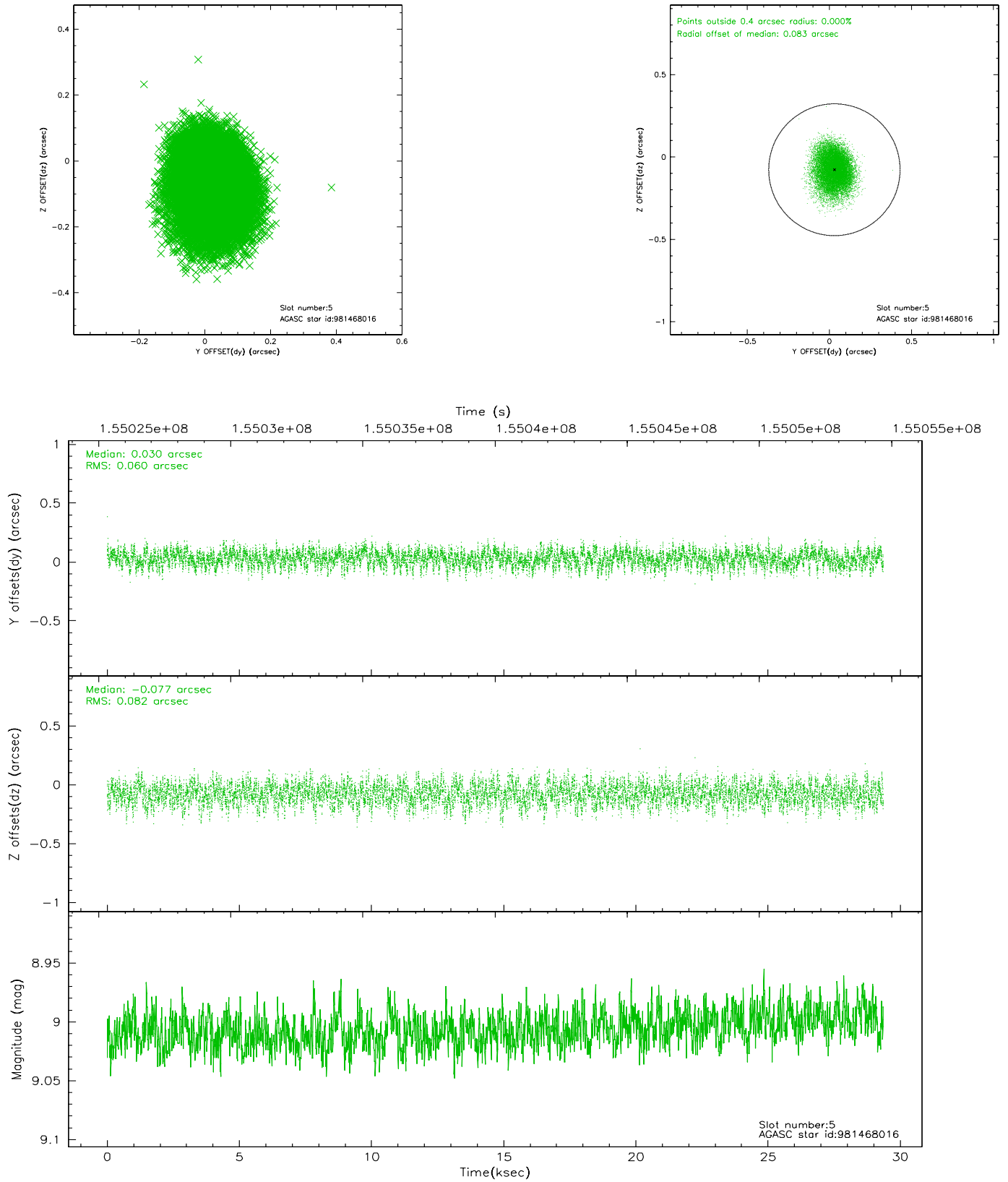
2.4.1 Slot 3



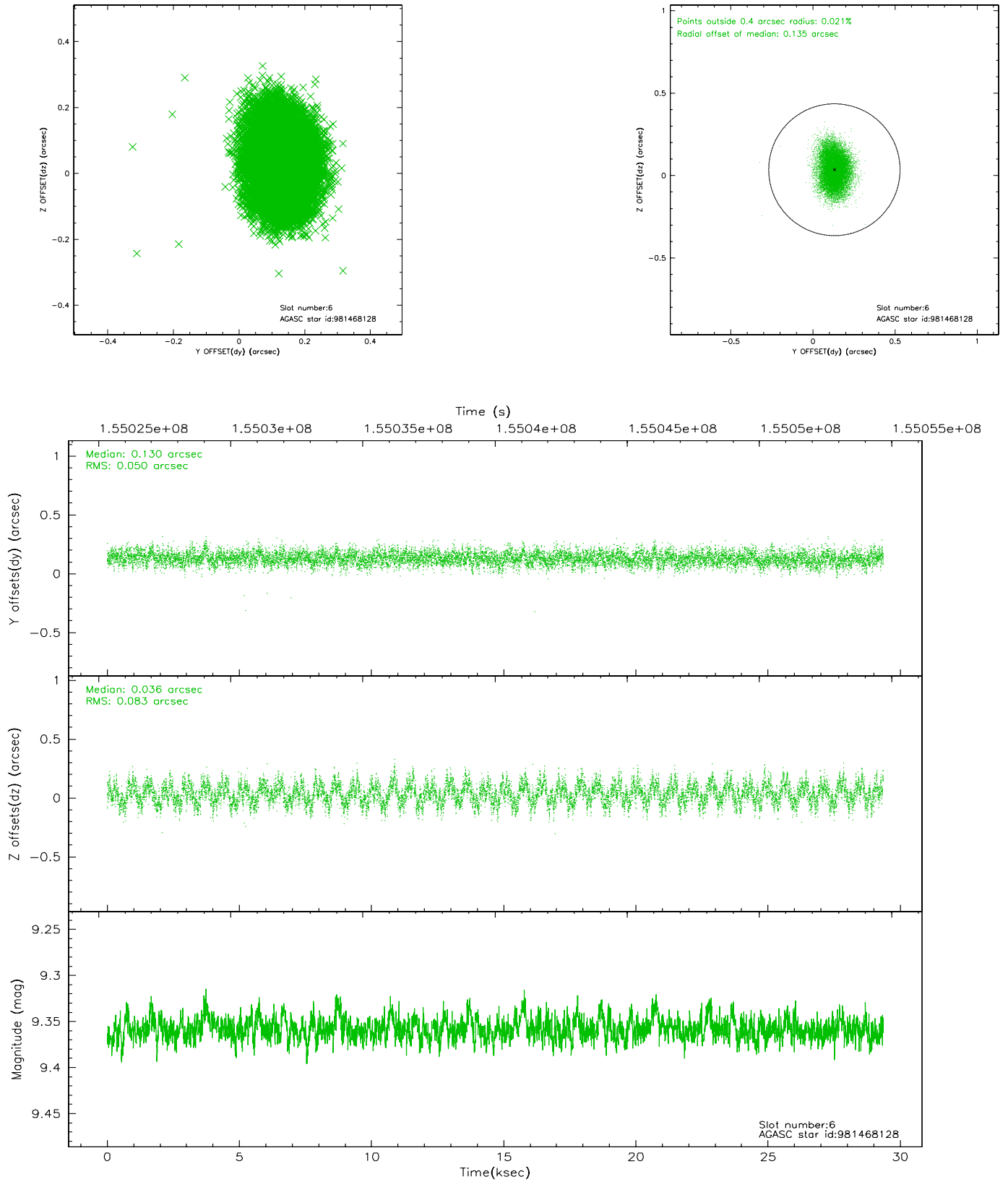
2.4.2 Slot 4



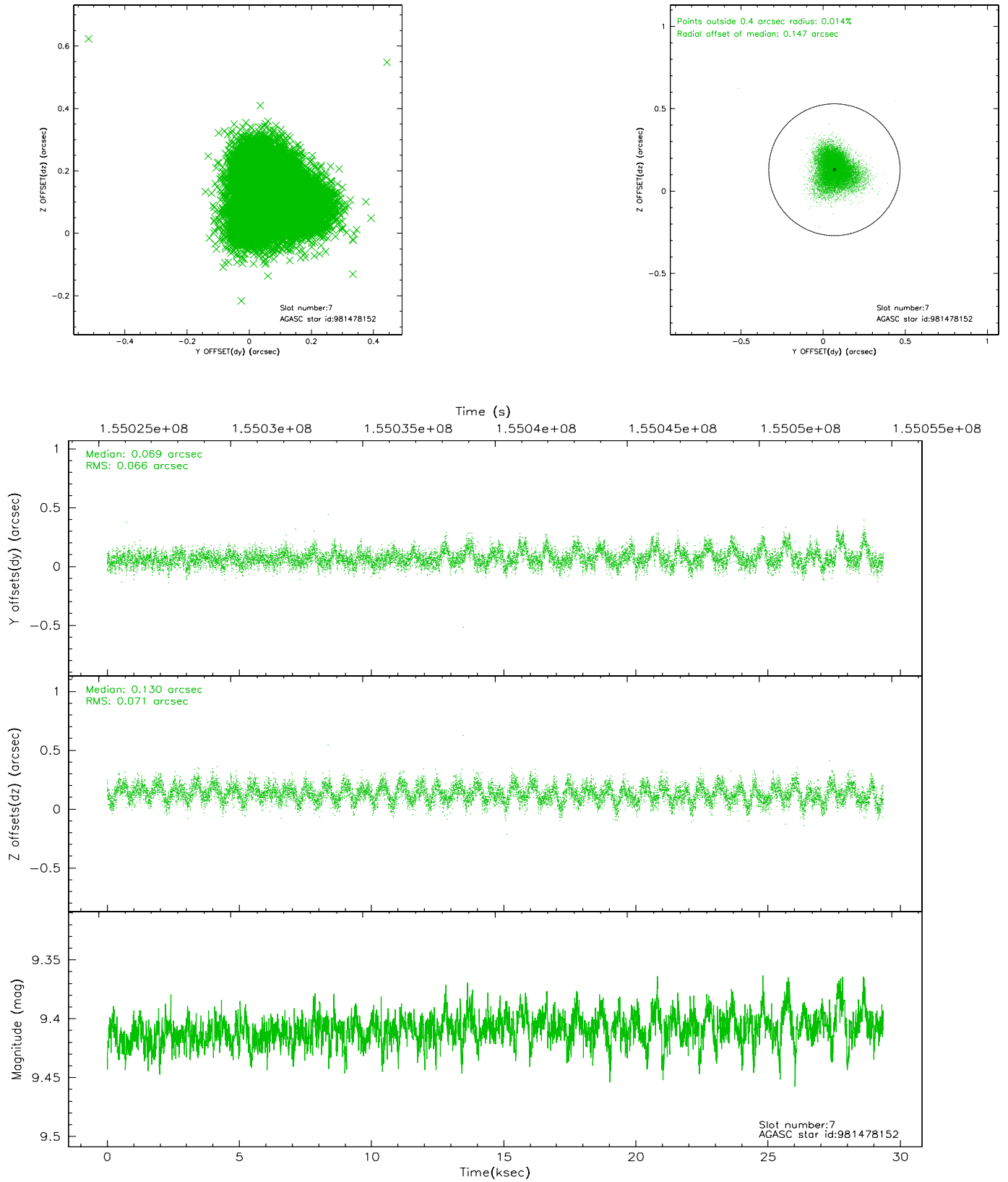
2.4.3 Slot 5



2.4.4 Slot 6

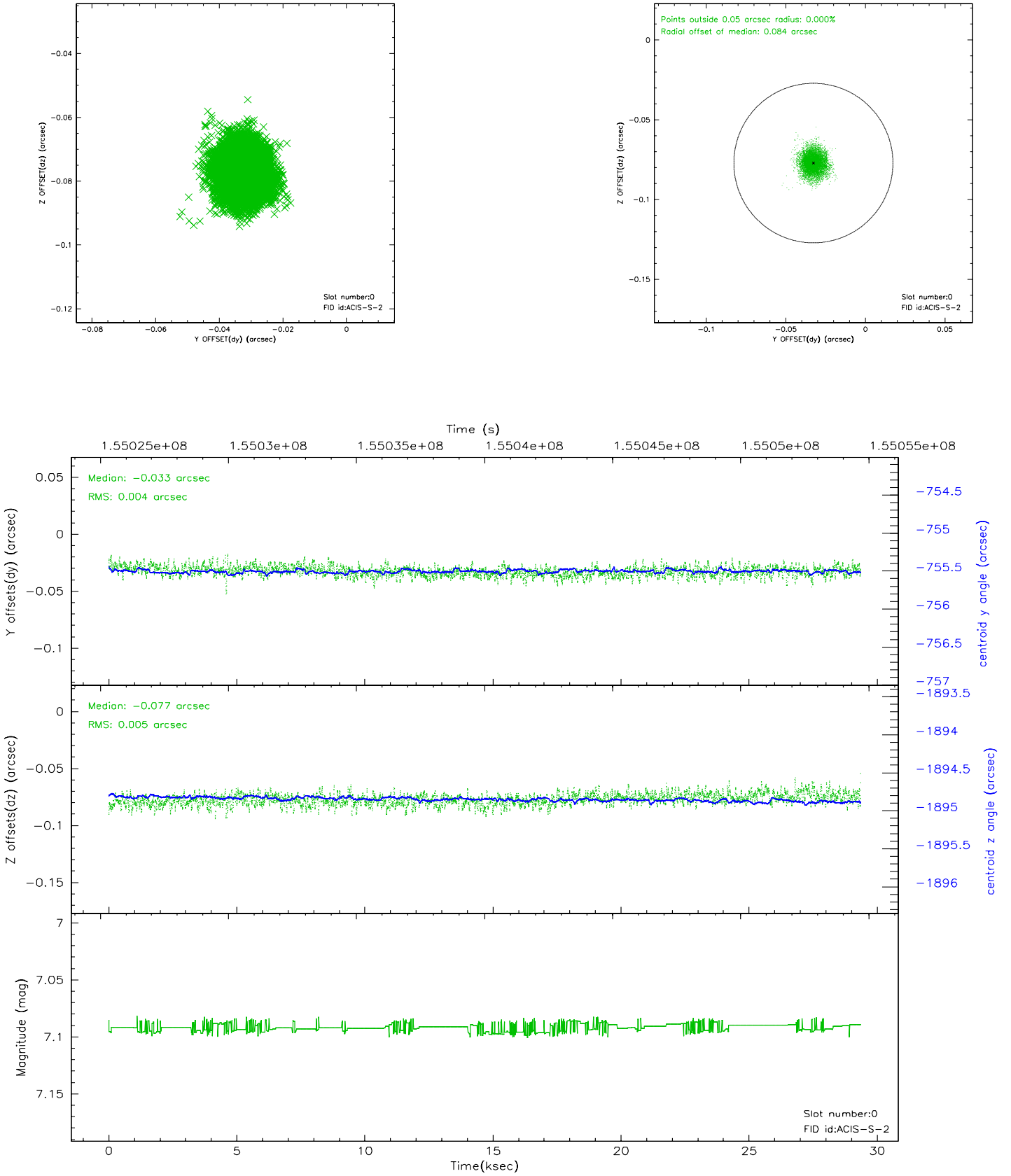


2.4.5 Slot 7

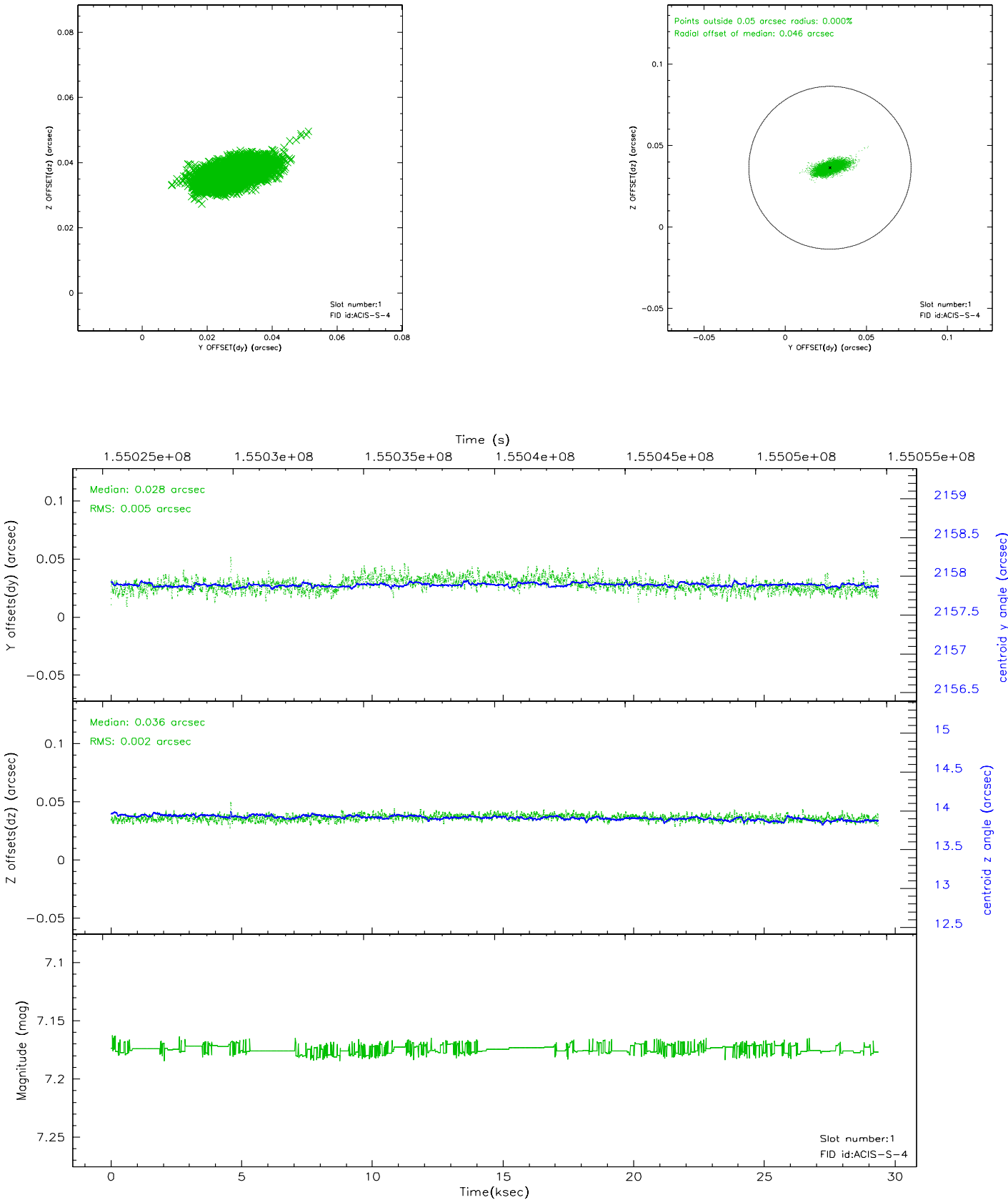


2.5 FID Slots

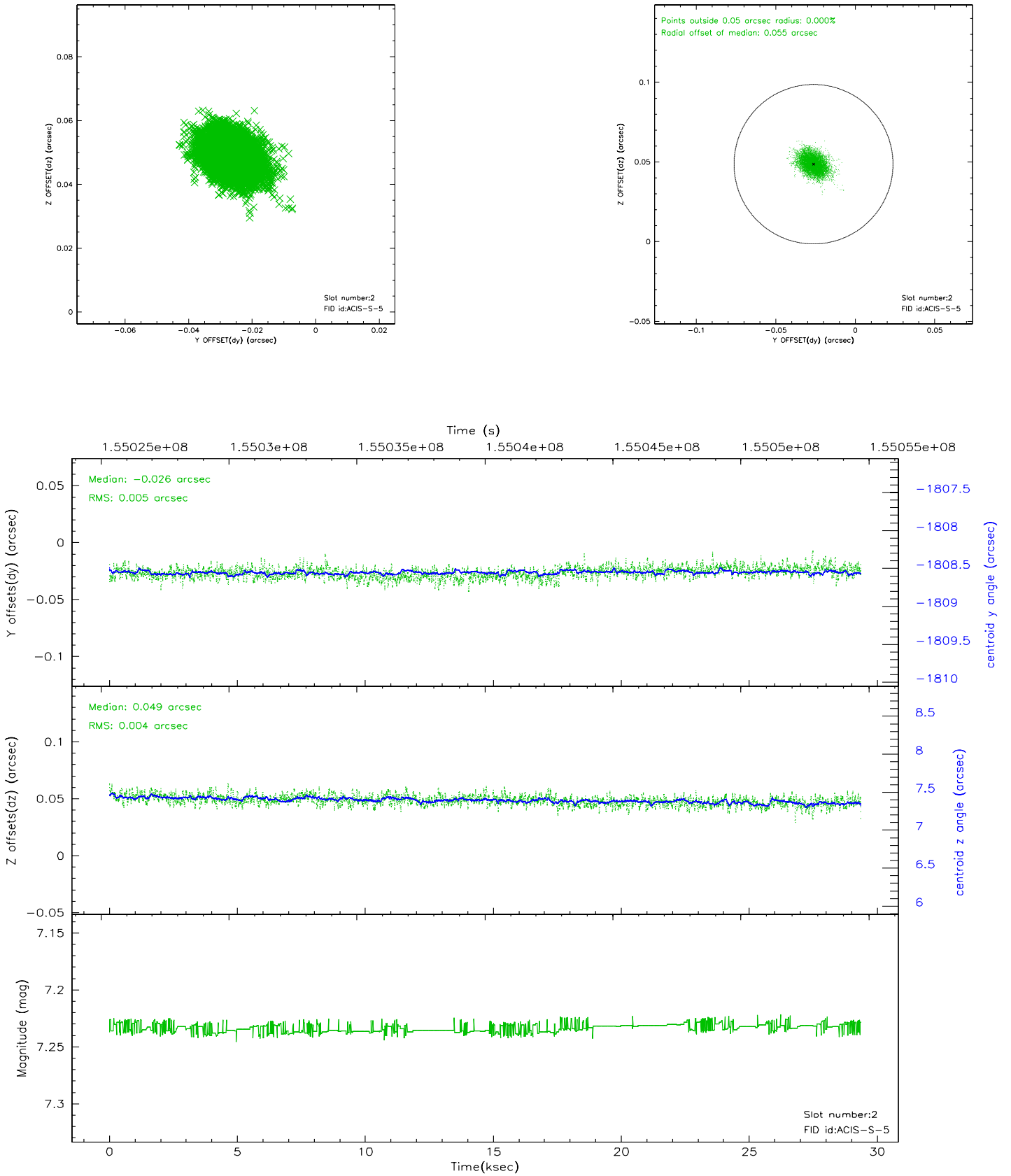
2.5.1 Slot 0



2.5.2 Slot 1

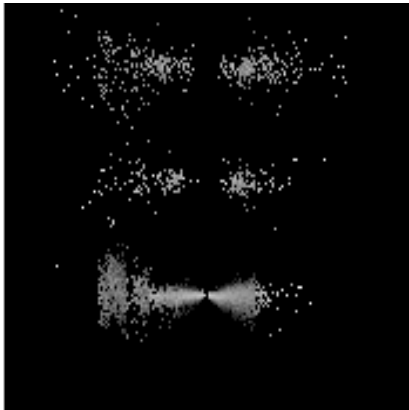


2.5.3 Slot 2

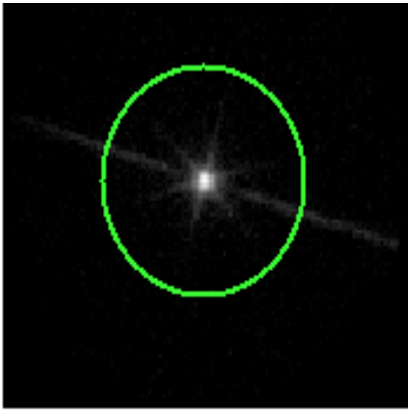


3 Gratings

3.1 LETG Arm



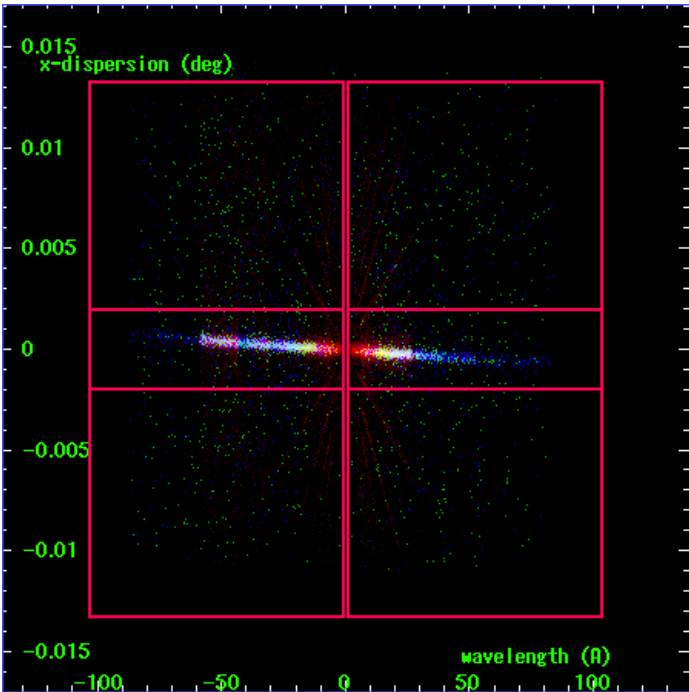
LETG Order Sort 123



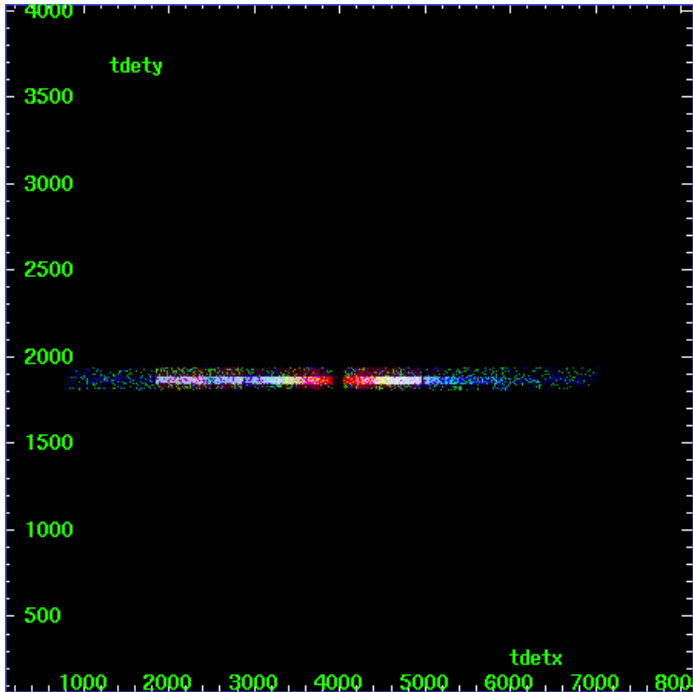
LETG Zero Order



LETG Order Sort ALL

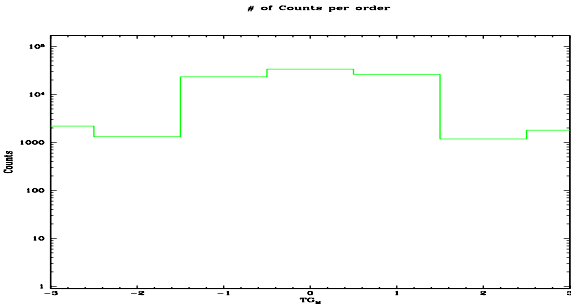


Spot Image LETG

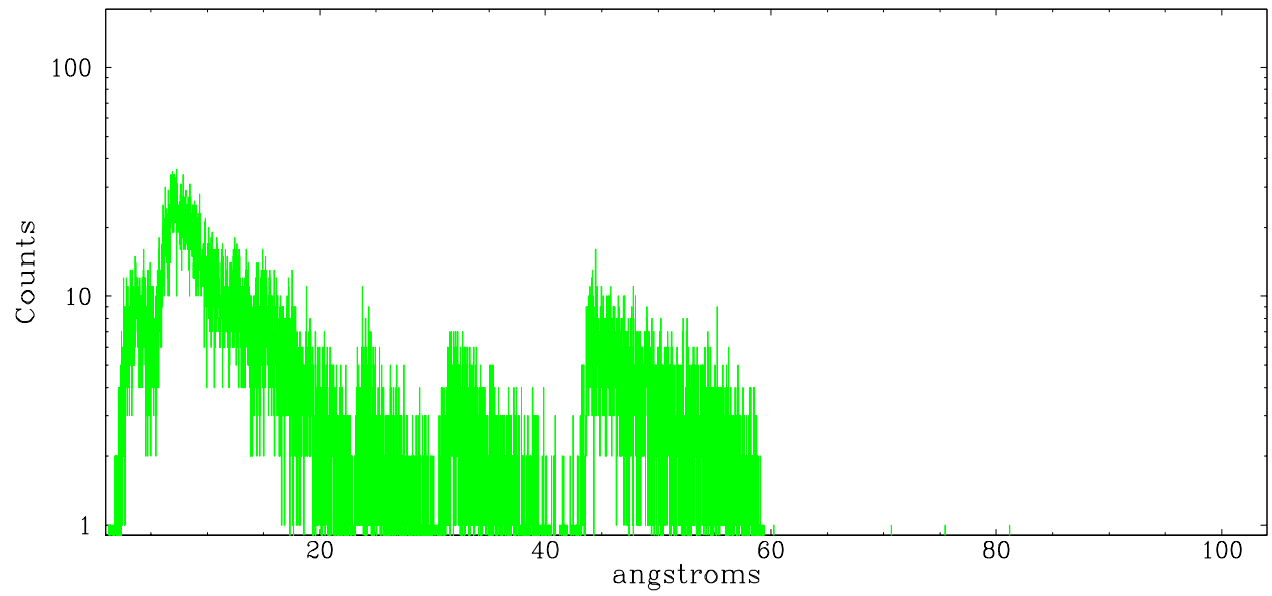


Full Detector LETG

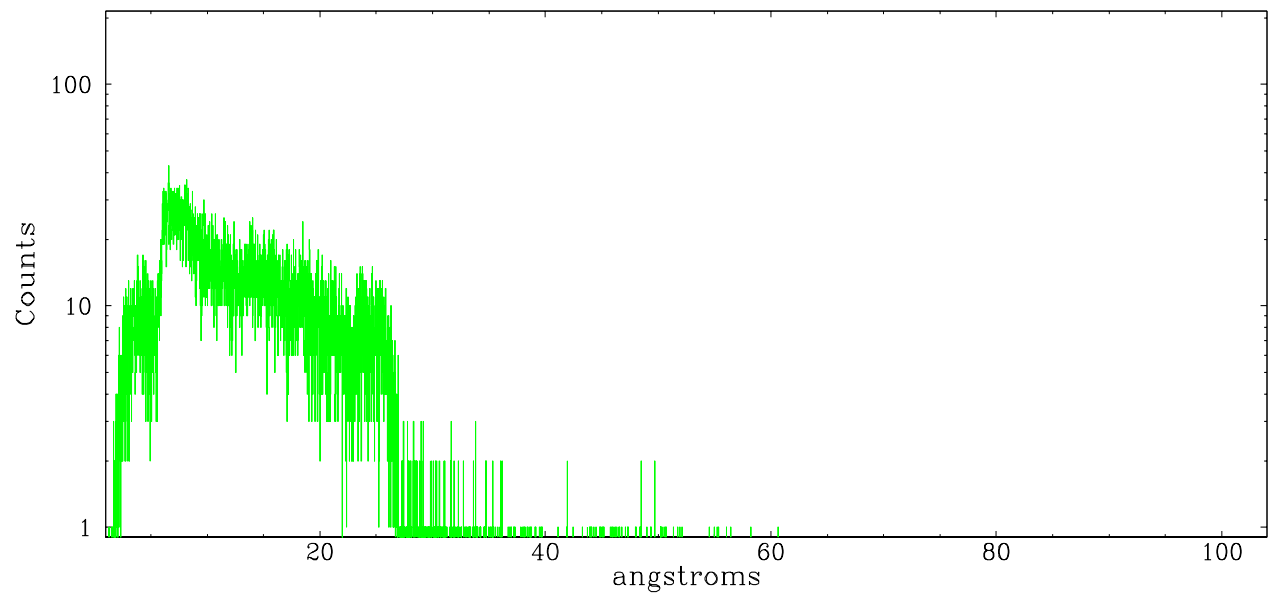
	order -3	order -2	order -1	order 0	order 1	order 2	order 3
Events	2197	1314	23385	33552	26252	1175	1804



leg order -1



leg order +1



A Summary

A.1 Status

V&V Scientist	David Huenemoerder
V&V Date (YYYY-MM-DD)	2006.10.19
V&V Edition	1
V&V Disposition and Status	OK
V&V Charge Time	28.512

A.2 Comments