

V&V Reference Report

L2 ASCDS Version : 7.6.8

Observation 3697 - L2 Version 001
Chandra X-Ray Center

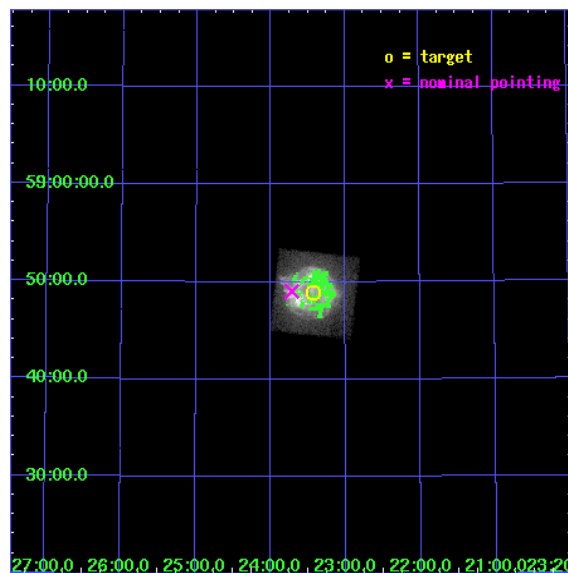
L2 Processing Date : Jul 24 2006

Contents

1	Front	2
2	OBI	3
2.1	OBI	3
2.1.1	Images	3
2.1.2	Bias	3
2.1.3	Parameters	4
2.1.4	Events	4
2.2	Compared Parameters	5
2.3	Aspect	6
2.4	Star Slots	9
2.4.1	Slot 3	9
2.4.2	Slot 4	10
2.4.3	Slot 5	11
2.4.4	Slot 6	12
2.4.5	Slot 7	13
2.5	FID Slots	14
2.5.1	Slot 0	14
2.5.2	Slot 1	15
2.5.3	Slot 2	16
3	Point Sources	17
A	Summary	18
A.1	Status	18
A.2	Comments	18

1 Front

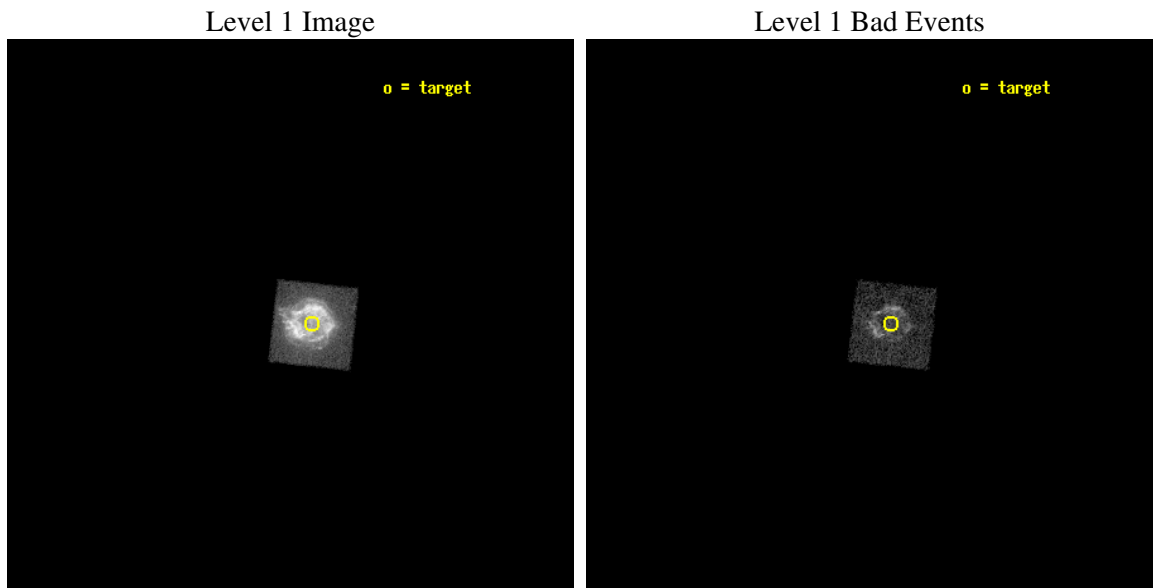
seq_num	590309
obs_id	3697
title	AO4A OBSERVATIONS OF THE STANDARD CANDLES CAS A AND G21.5-09
observer	Dr. CXC Calibration
object	CAS A[S3,-120,-2.0,0,0]
dtcycle	0
cycle	P
ra_targ	350.8575
dec_targ	58.814833
ra_nom	350.92940317221
dec_nom	58.817221705302
roll_nom	6.4285344258504
revision	2
ontime	1156.4477967322
livetime	1141.8041584007
ontime4	2070.3999922872
ontime5	2070.3999922872
ontime6	2070.3999922872
ontime7	1156.4477967322
ontime8	2070.3999922872
ontime9	2070.3999922872
l2events	350500



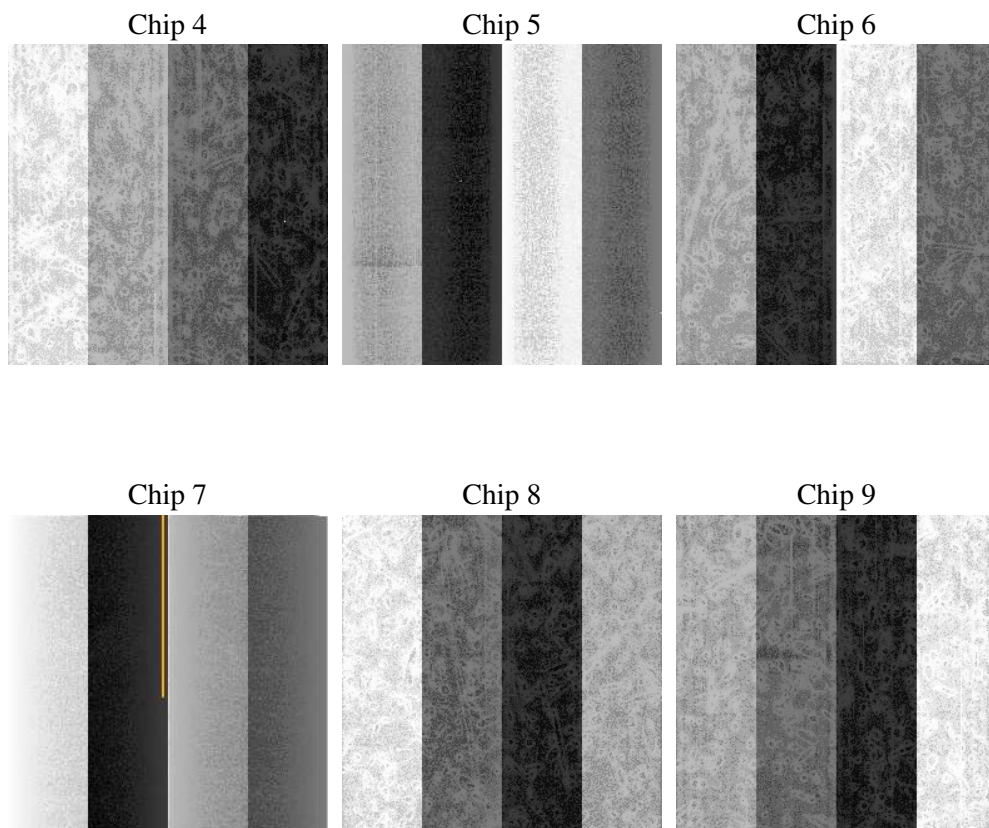
2 OBI

2.1 OBI

2.1.1 Images



2.1.2 Bias



2.1.3 Parameters

obi_num	0
ascdsver	7.6.8
caldsver	3.2.2
date	2006-07-24T19:34:07
revision	2

sched_exp_time	2119.000000
ontime	1160.288371712
ontime4	2074.2405672669
ontime5	2074.2405672669
ontime6	2074.2405672669
ontime7	1160.288371712
ontime8	2074.2405672669
ontime9	2074.2405672669
l1events	397867

2.1.4 Events

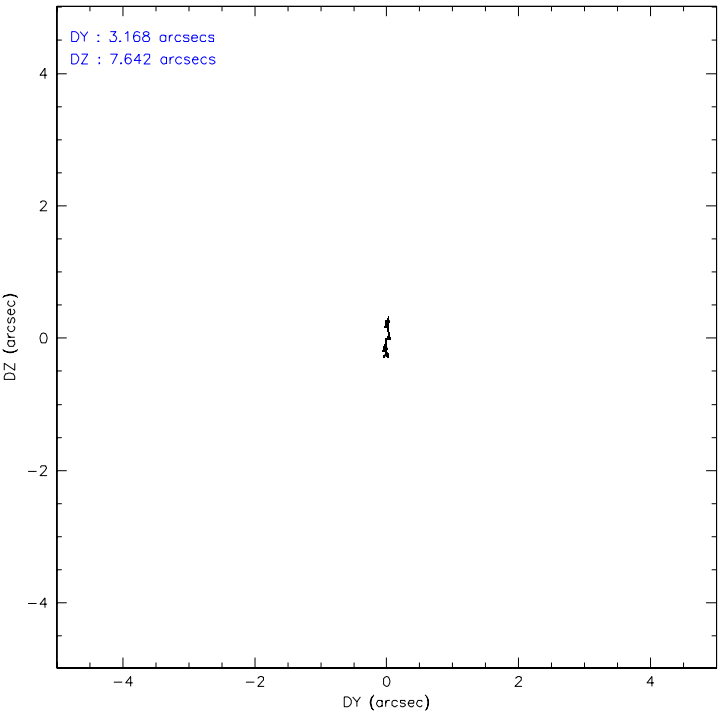
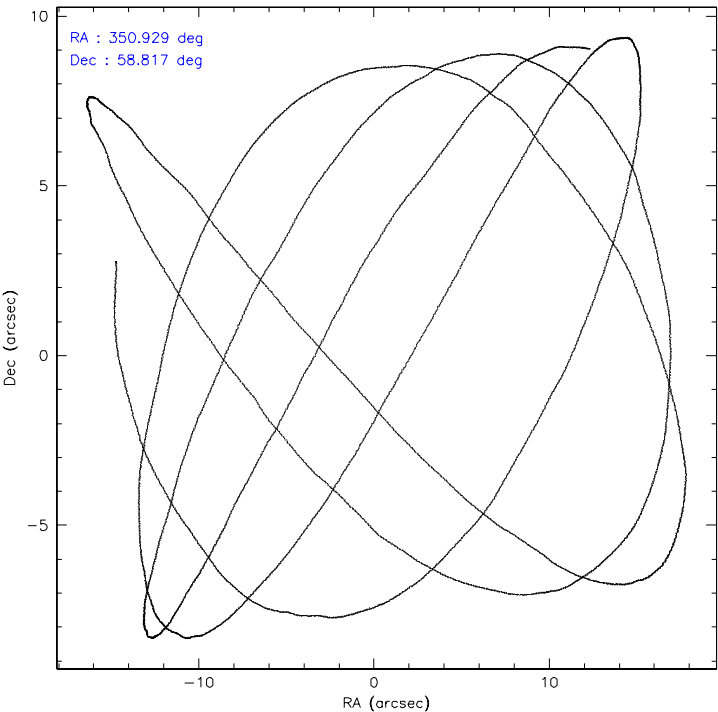
	ccd 4	ccd 5	ccd 6	ccd 7	ccd 8	ccd 9
level 1 events	0	0	0	397867	0	0
rejected events	0	0	0	43594	0	0
rejected %	0%	0%	0%	10%	0%	0%

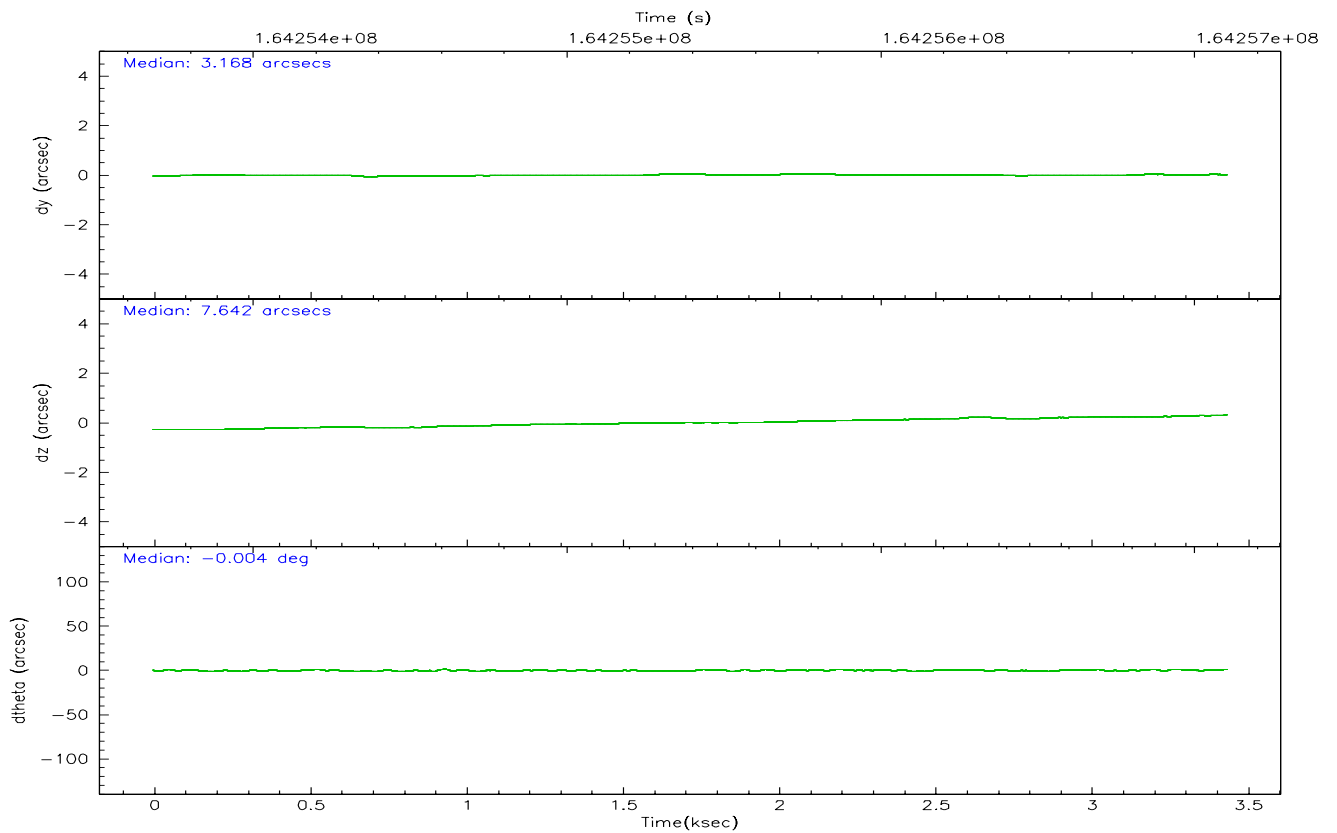
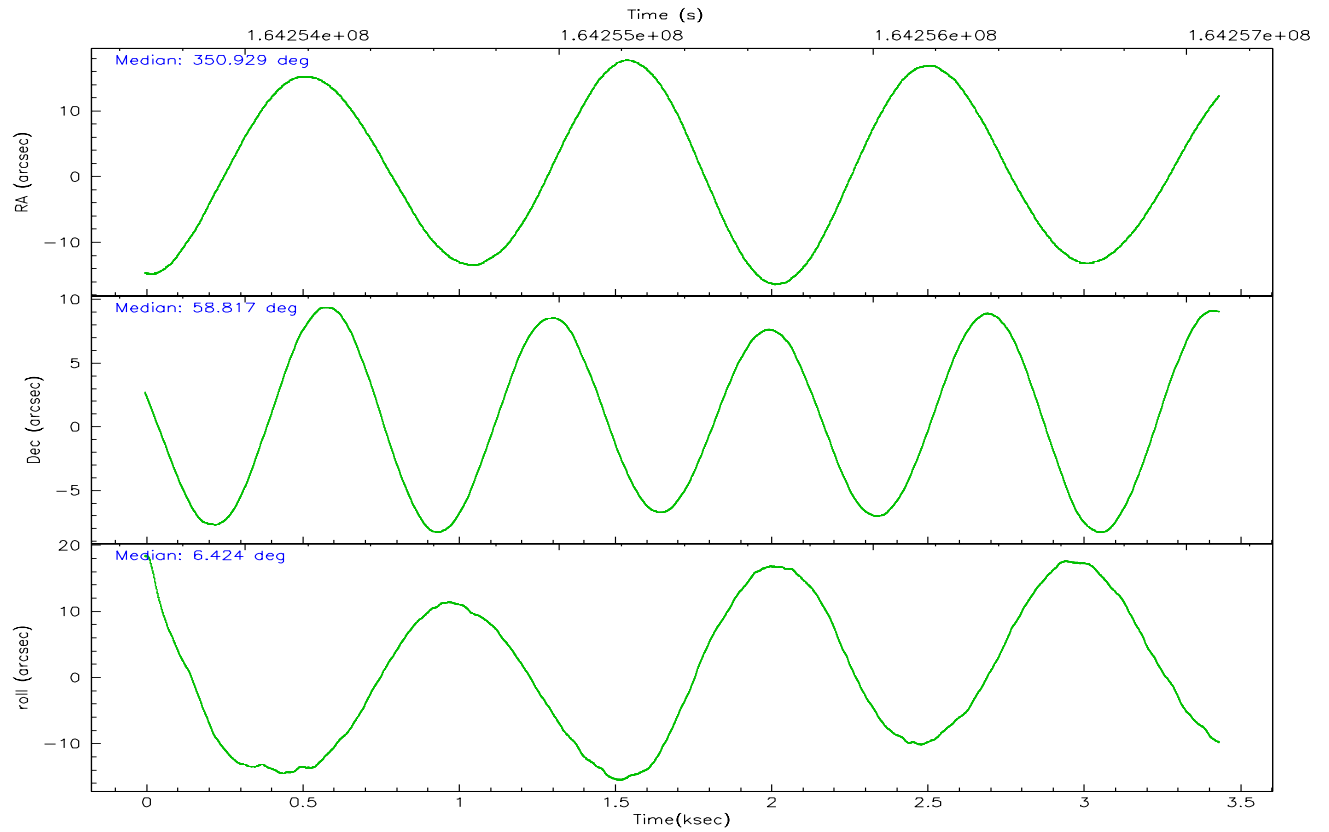
	ccd 4	ccd 5	ccd 6	ccd 7	ccd 8	ccd 9
grade 0 events	0	0	0	80851	0	0
	0%	0%	0%	20%	0%	0%
grade 1 events	0	0	0	1510	0	0
	0%	0%	0%	0%	0%	0%
grade 2 events	0	0	0	101589	0	0
	0%	0%	0%	25%	0%	0%
grade 3 events	0	0	0	38757	0	0
	0%	0%	0%	9%	0%	0%
grade 4 events	0	0	0	38177	0	0
	0%	0%	0%	9%	0%	0%
grade 5 events	0	0	0	7005	0	0
	0%	0%	0%	1%	0%	0%
grade 6 events	0	0	0	95950	0	0
	0%	0%	0%	24%	0%	0%
grade 7 events	0	0	0	34028	0	0
	0%	0%	0%	8%	0%	0%

2.2 Compared Parameters

Parameter	Planned	Actual	Parameter	Planned	Actual
Instrument	ACIS	ACIS	Obspar format version number	6	6
Detector	ACIS-235678	ACIS-456789	Obspar file type	PREDICTED	ACTUAL
Grating	NONE	NONE	Obspar update status	NONE	UPDATED
Data mode	FAINT	FAINT	On-chip summing requested	N	N
Observation mode	POINTING	POINTING	Subarray requested	NONE	NONE
Pointing RA	350.887702	350.9294031722079	Alternating exposures requested	N	N
Pointing Dec	58.800794	58.81722170530208	Primary exposure time	0.000000	3.2
Pointing Roll	6.307582	6.428534425850444			
Window start time	164073664.184000	164073664.184000			
Window stop time	168134464.184000	168134464.184000			
SIM focus pos (mm)	-0.684267	-0.6828225247311905			
SIM defocus (mm)	0	0.001444936568705701			
SIM translation stage pos (mm)	-190.132523	-190.1425803651734			
SIM translation stage offset (mm)	0	0.01005778216563158			
Observation start time	164254993.184000	164253463.46452			
Observation start date	2003-03-17T02:22:09	2003-03-17T01:57:43			
Observation end time	164257112.184000	164257300.03968			
Observation end date	2003-03-17T02:57:28	2003-03-17T03:01:40			
Read mode	TIMED	TIMED			

2.3 Aspect



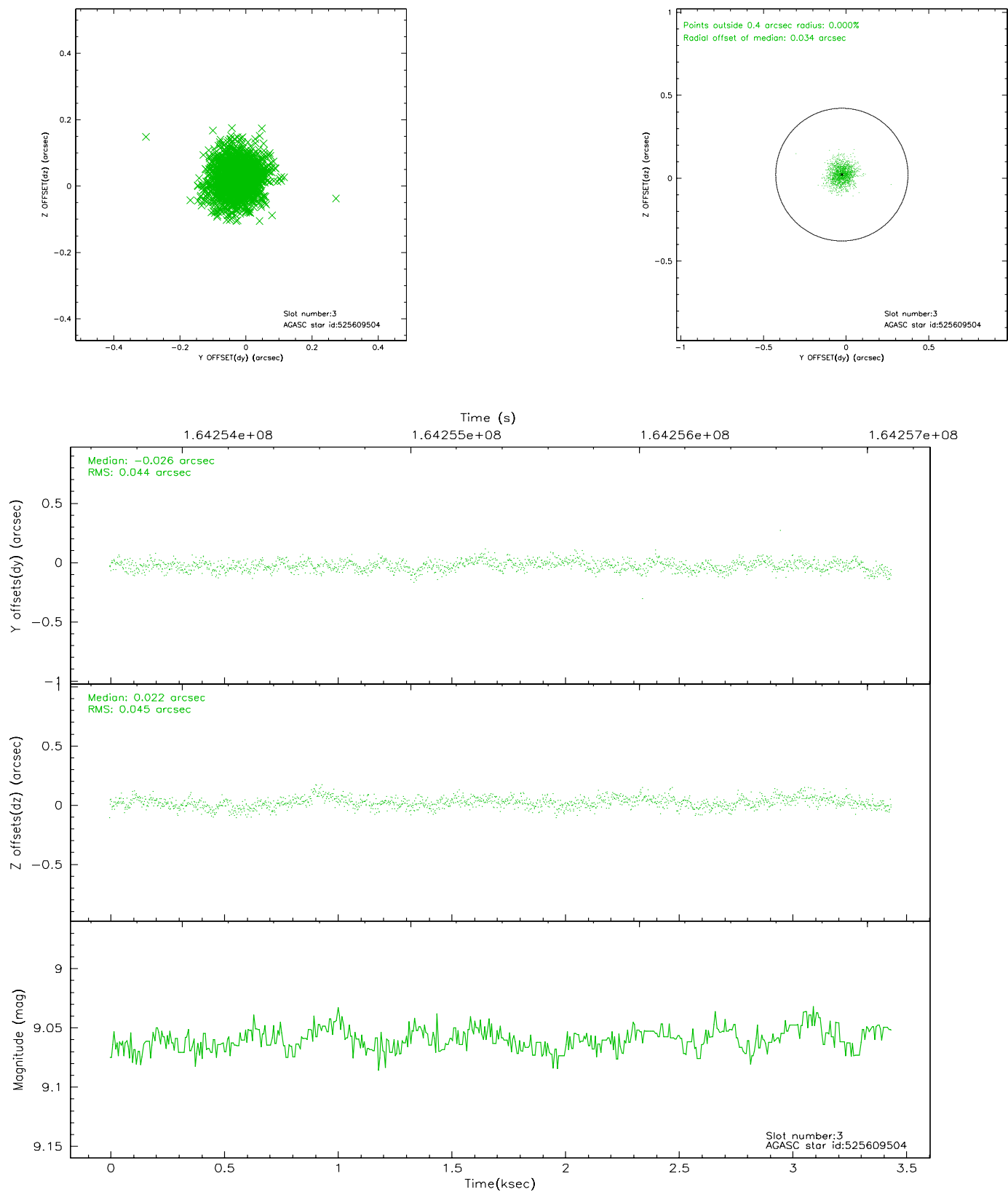


Slot Statistics

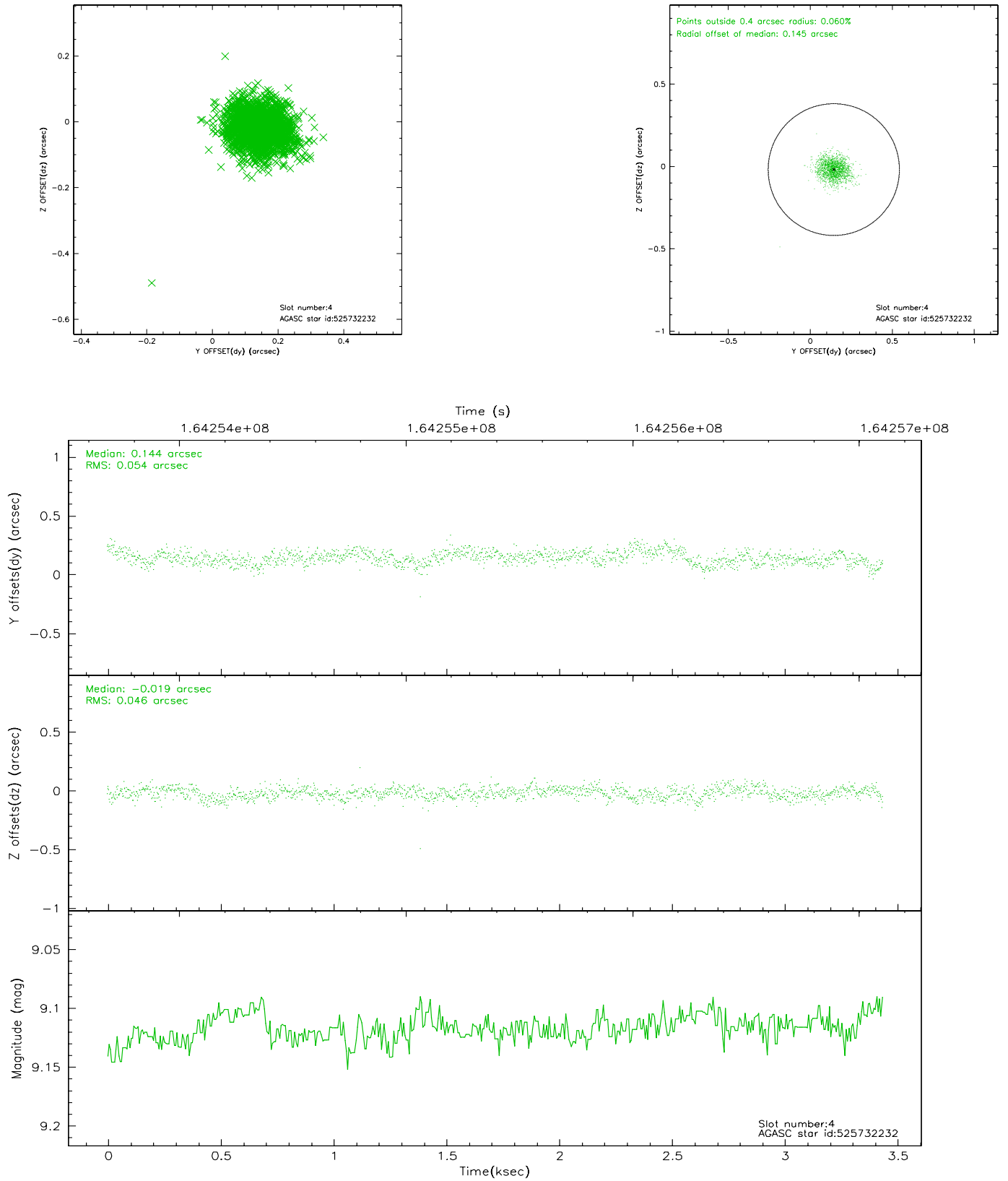
slot	status	id	mag	n_pts	med_dy	med_dz	dr1	dr2	ra	dec	mean_y	mean_z
0	FID	ACIS-S-2	7.12	839	-0.003	0.018	0.005	0.010	0.000000	0.000000	-755.82	-1728.76
1	FID	ACIS-S-4	7.20	839	-0.014	0.009	0.006	0.011	0.000000	0.000000	2156.62	177.81
2	FID	ACIS-S-6	7.36	839	-0.011	-0.019	0.007	0.014	0.000000	0.000000	408.52	817.28
3	GUIDE	525609504	9.06	1678	-0.026	0.022	0.066	0.109	349.896632	58.356658	-2034.15	-1369.76
4	GUIDE	525732232	9.12	1677	0.144	-0.019	0.074	0.118	351.669550	58.757012	1434.40	-309.49
5	GUIDE	525735976	8.84	1678	-0.070	-0.027	0.079	0.127	350.142956	58.277622	-1605.93	-1709.52
6	GUIDE	525732896	9.70	1678	-0.066	-0.021	0.108	0.175	351.456486	59.410070	1276.48	2069.34
7	GUIDE	525732528	9.36	1676	0.018	0.041	0.082	0.137	351.607241	59.298932	1513.43	1645.85

2.4 Star Slots

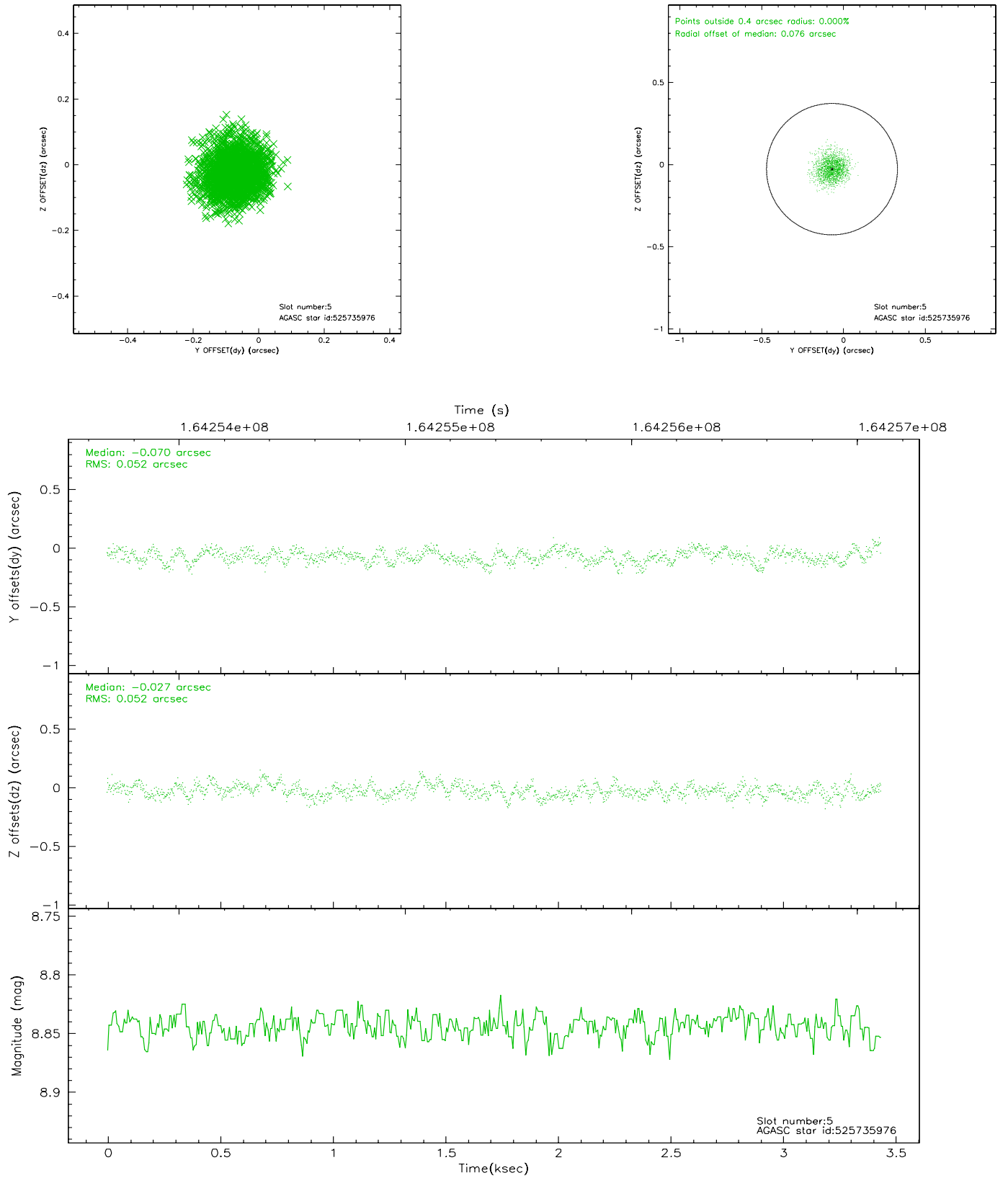
2.4.1 Slot 3



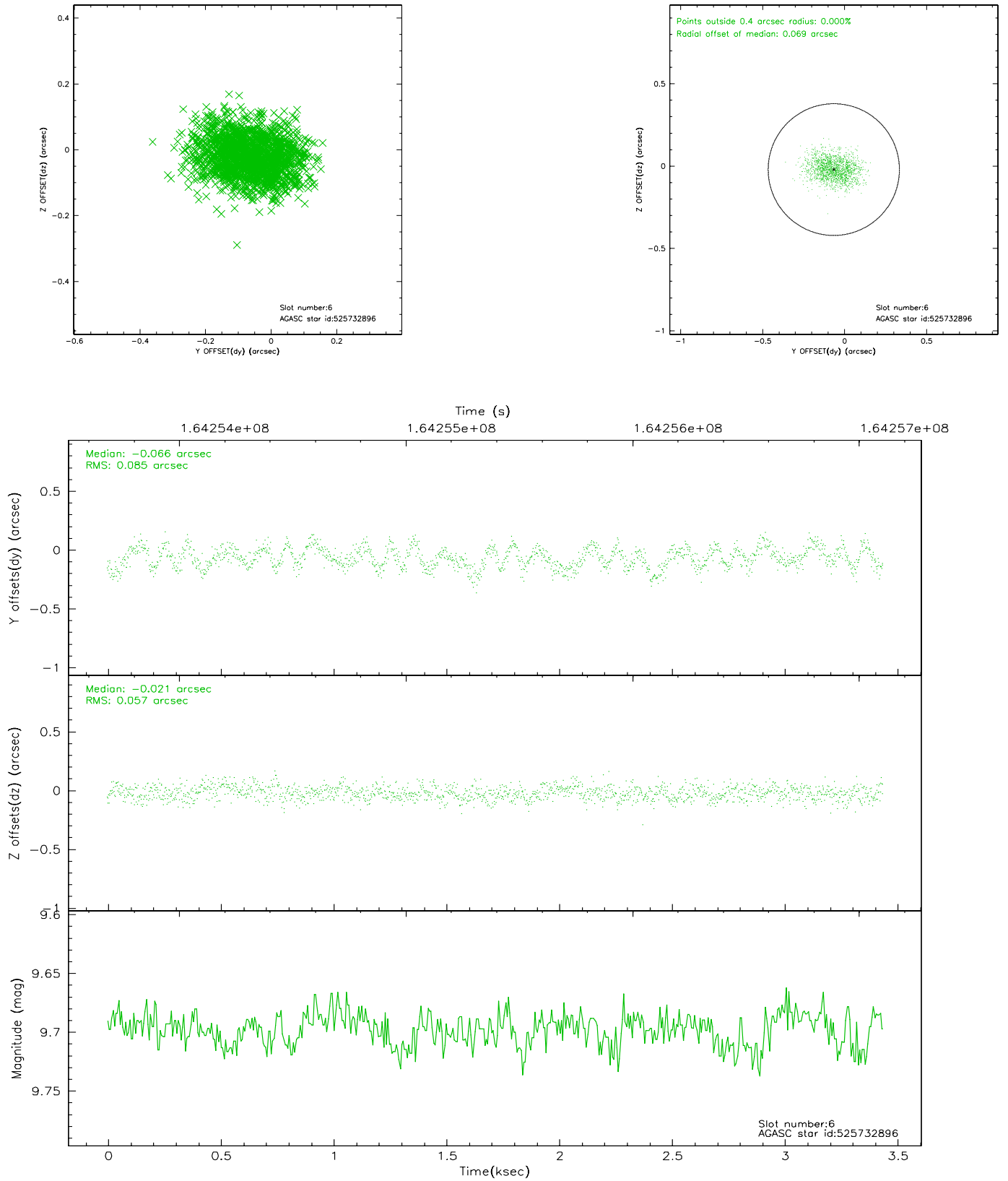
2.4.2 Slot 4



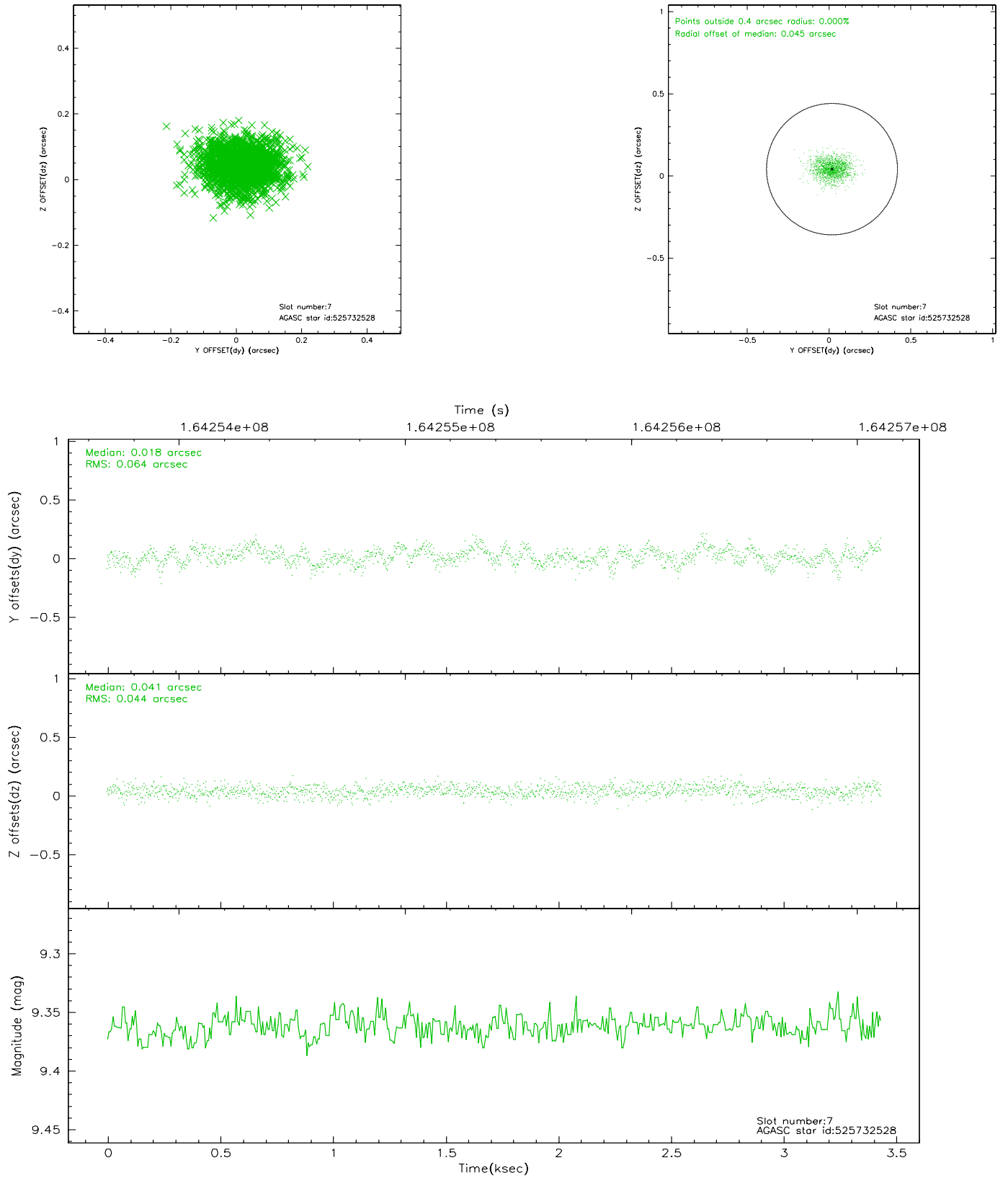
2.4.3 Slot 5



2.4.4 Slot 6

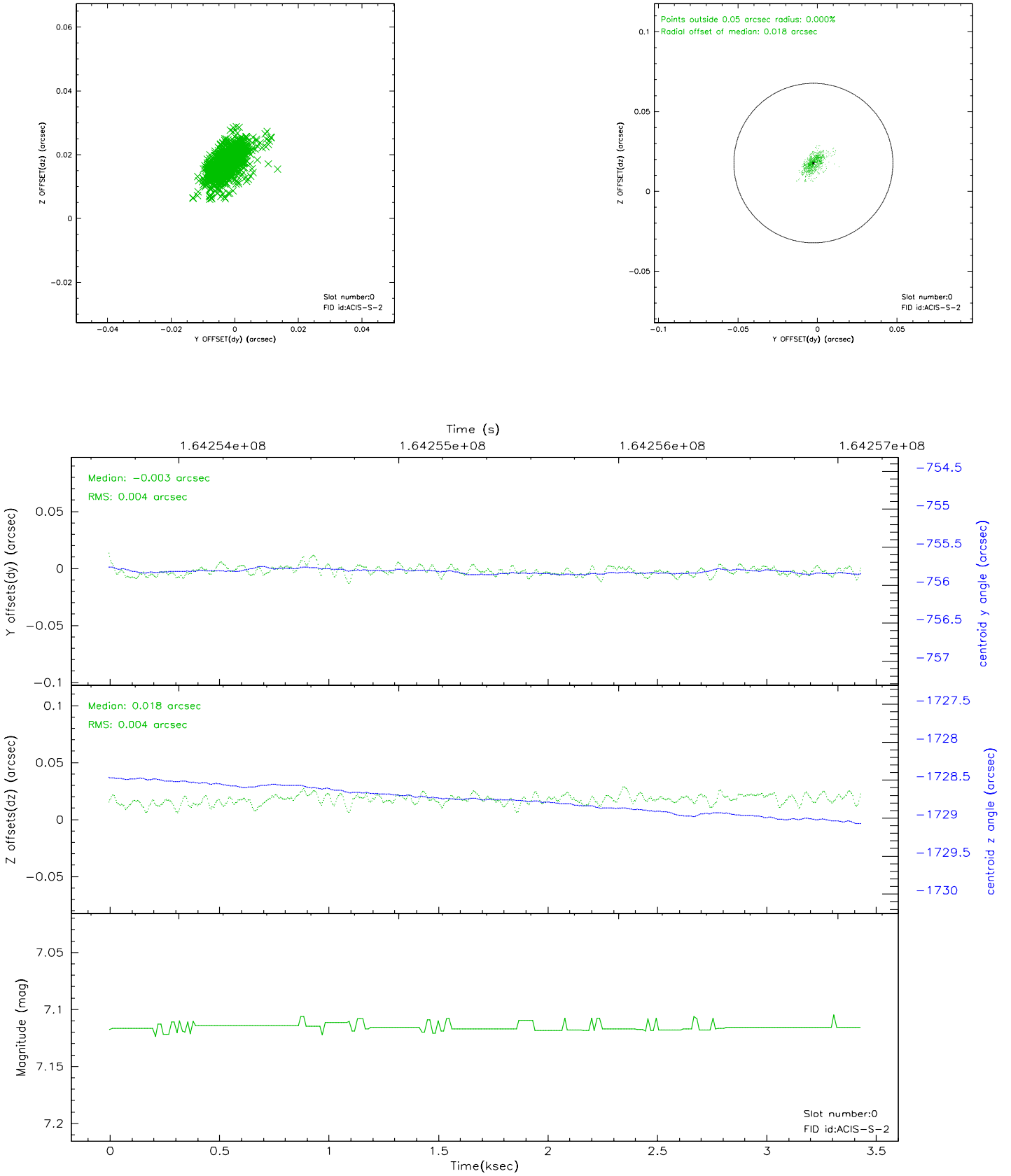


2.4.5 Slot 7

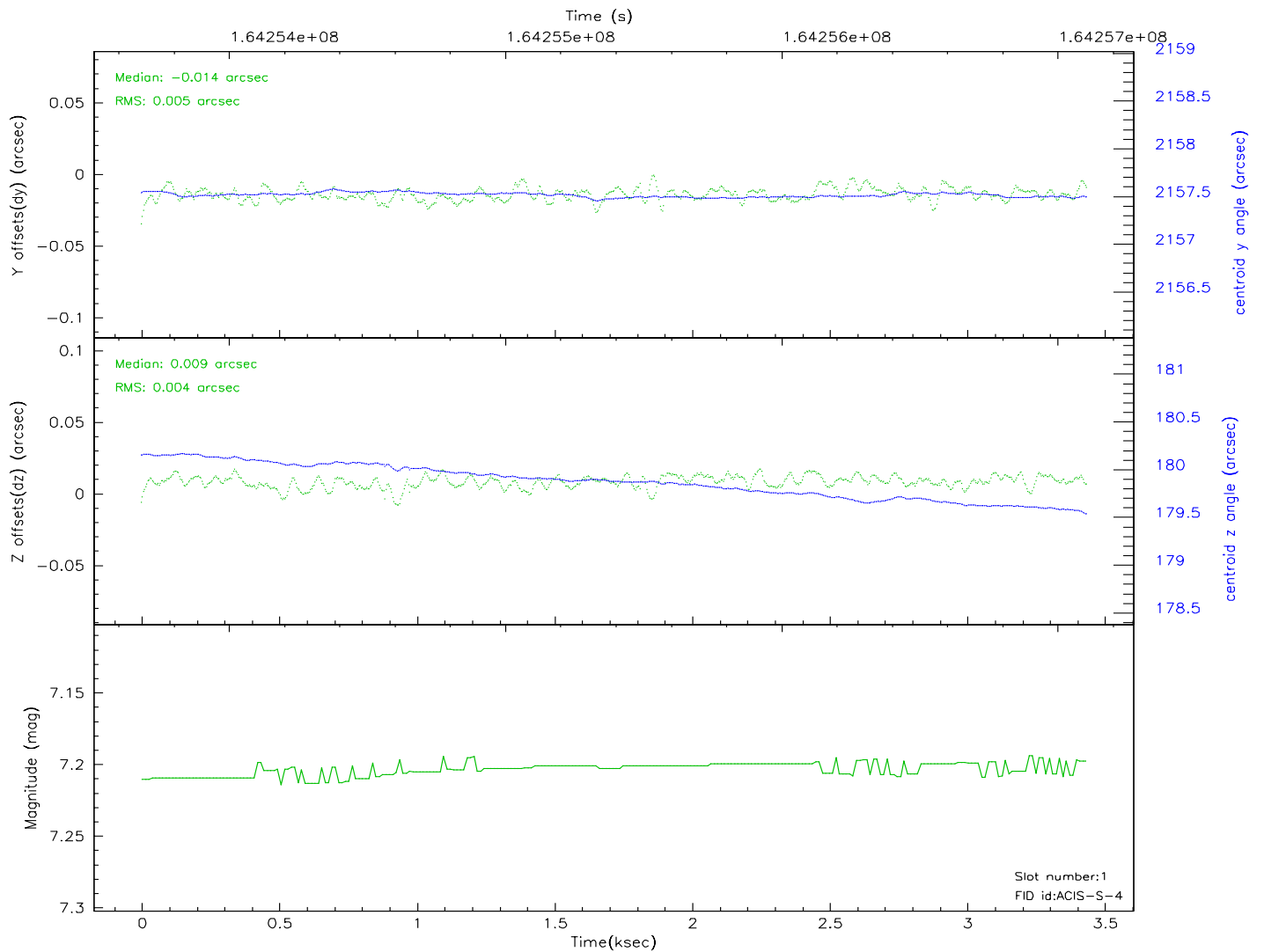
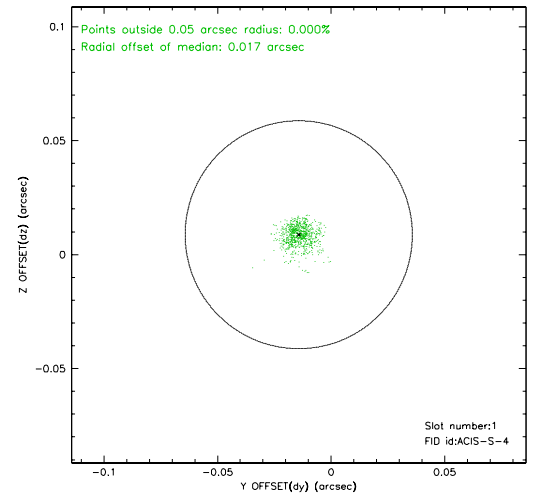
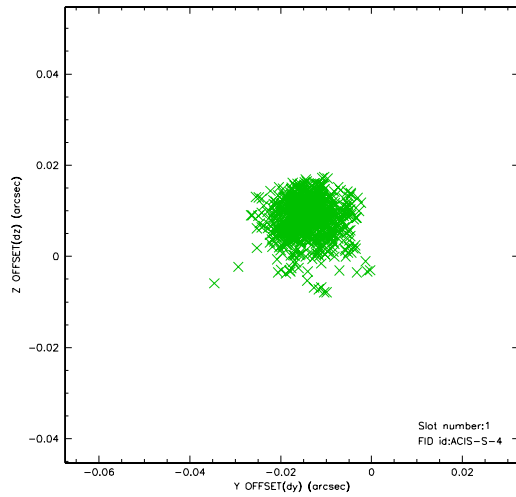


2.5 FID Slots

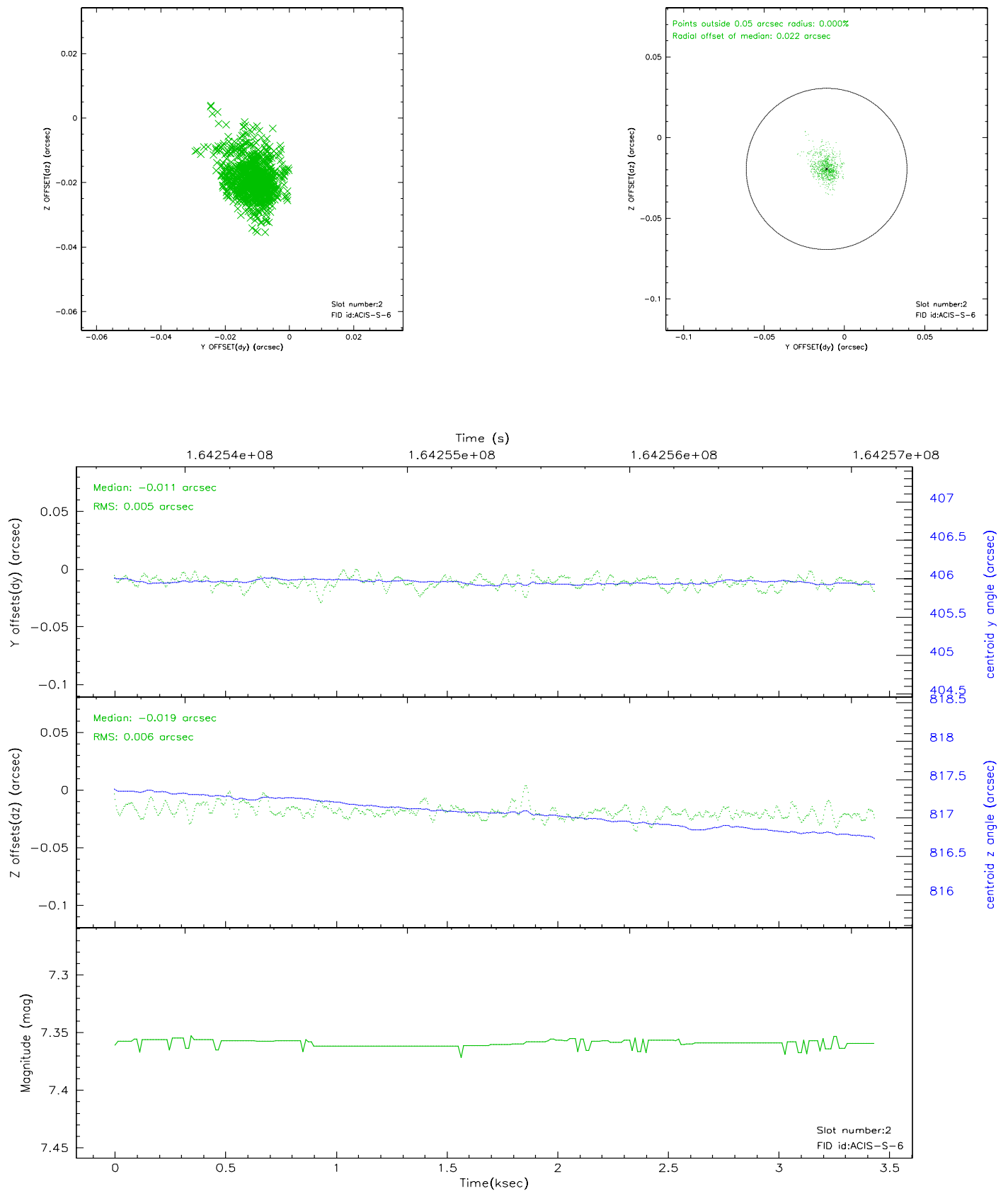
2.5.1 Slot 0



2.5.2 Slot 1



2.5.3 Slot 2



3 Point Sources

A Summary

A.1 Status

V&V Scientist	Jen Lauer
V&V Date (YYYY-MM-DD)	2006.07.25
V&V Edition	1
V&V Disposition and Status	OK
V&V Charge Time	1.156

A.2 Comments

Window constraint met. Because the used detector is a subset of the planned detector, the difference between planned and actual does not affect the observation.