

# V&V Reference Report

## L2 ASCDS Version : 7.6.8

Observation 3547 - L2 Version 001  
Chandra X-Ray Center

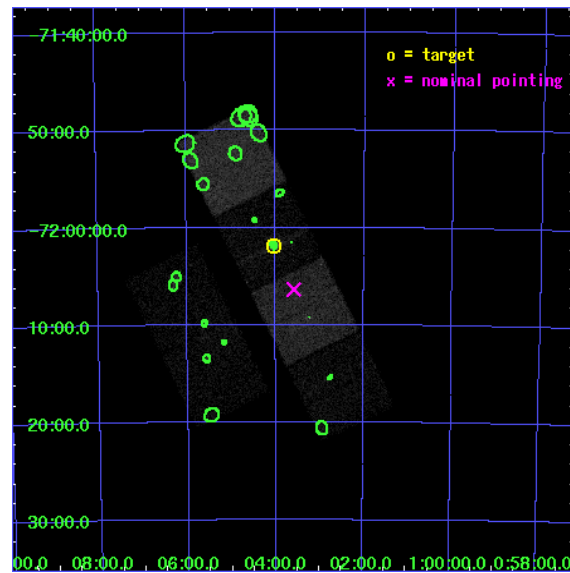
L2 Processing Date : Jul 10 2006

## Contents

<b>1</b>	<b>Front</b>	<b>2</b>
<b>2</b>	<b>OBI</b>	<b>3</b>
2.1	OBI . . . . .	3
2.1.1	Images . . . . .	3
2.1.2	Bias . . . . .	3
2.1.3	Parameters . . . . .	4
2.1.4	Events . . . . .	4
2.2	Compared Parameters . . . . .	5
2.3	Aspect . . . . .	6
2.4	Star Slots . . . . .	9
2.4.1	Slot 3 . . . . .	9
2.4.2	Slot 4 . . . . .	10
2.4.3	Slot 5 . . . . .	11
2.4.4	Slot 6 . . . . .	12
2.4.5	Slot 7 . . . . .	13
2.5	FID Slots . . . . .	14
2.5.1	Slot 0 . . . . .	14
2.5.2	Slot 1 . . . . .	15
2.5.3	Slot 2 . . . . .	16
<b>3</b>	<b>Point Sources</b>	<b>17</b>
<b>A</b>	<b>Summary</b>	<b>18</b>
A.1	Status . . . . .	18
A.2	Comments . . . . .	18

# 1 Front

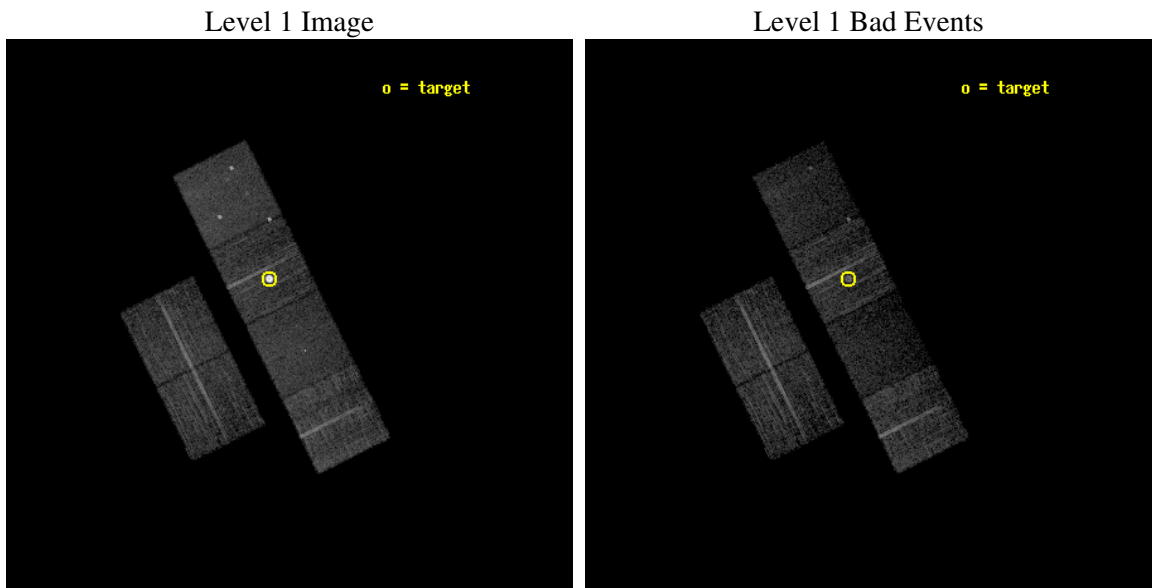
seq_num	590302
obs_id	3547
title	AO4B ACIS-S CALIBRATION OBSERVATIONS OF E0102-72
observer	Dr. CXC Calibration
object	E0102-72[S2,-120,5.15,0,0]
dtcycle	0
cycle	P
ra_targ	16.01
dec_targ	-72.032028
ra_nom	15.896243823076
dec_nom	-72.106024801965
roll_nom	63.644962009001
revision	2
ontime	7753.5999711156
livetime	7655.4192196239
ontime2	7753.5999711156
ontime3	7753.5999711156
ontime5	7753.5999711156
ontime6	7753.5999711156
ontime7	7753.5999711156
ontime8	7750.3590008318
l2events	80756



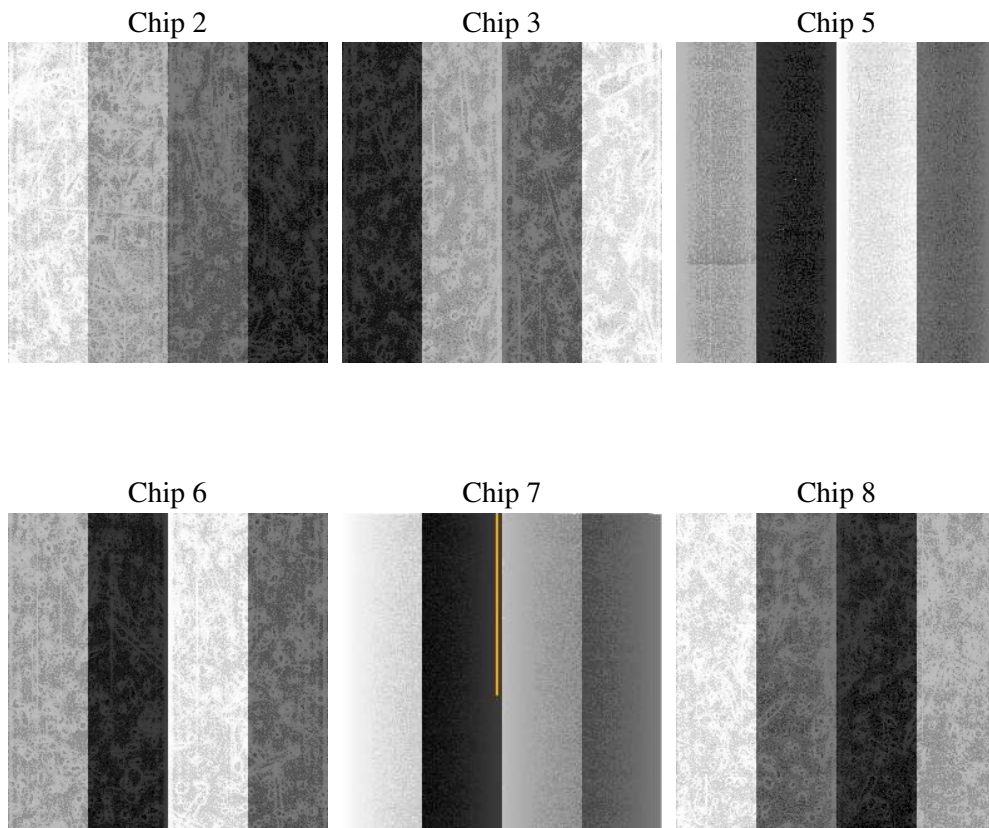
## 2 OBI

### 2.1 OBI

#### 2.1.1 Images



#### 2.1.2 Bias



### 2.1.3 Parameters

obi_num	0
ascdsver	7.6.8
caldsver	3.2.2
date	2006-07-11T01:53:56
revision	2

sched_exp_time	8000.000000
ontime	7758.9631816447
ontime2	7758.9631816447
ontime3	7758.9631816447
ontime5	7758.9631816447
ontime6	7758.9631816447
ontime7	7758.9631816447
ontime8	7755.7222113609
l1events	277921

### 2.1.4 Events

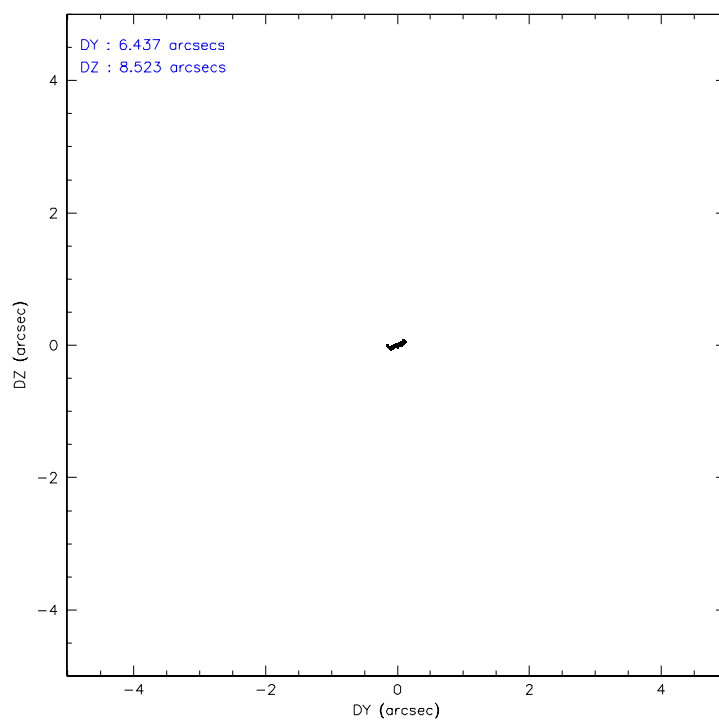
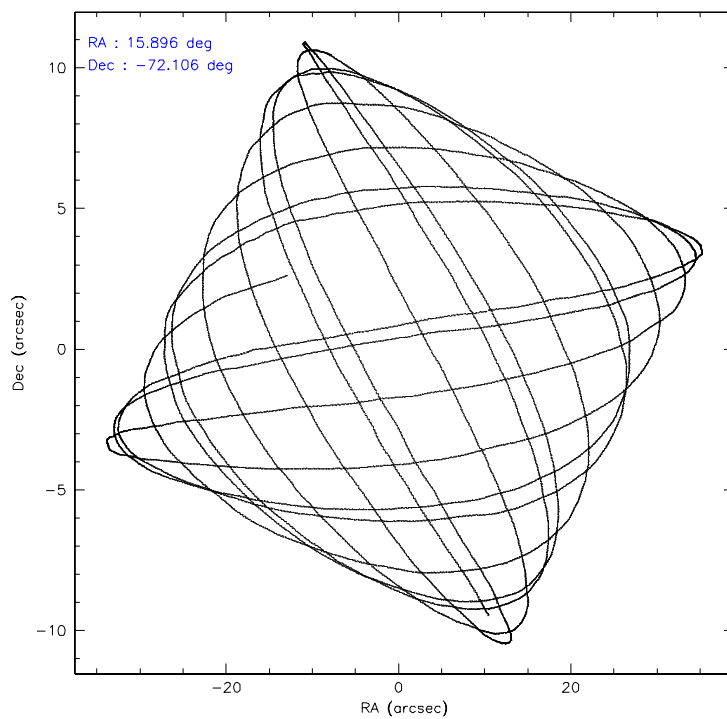
	ccd 2	ccd 3	ccd 5	ccd 6	ccd 7	ccd 8
level 1 events	40914	37076	47031	68213	36610	48077
rejected events	36836	33295	22346	34694	18980	37672
rejected %	90%	89%	47%	50%	51%	78%

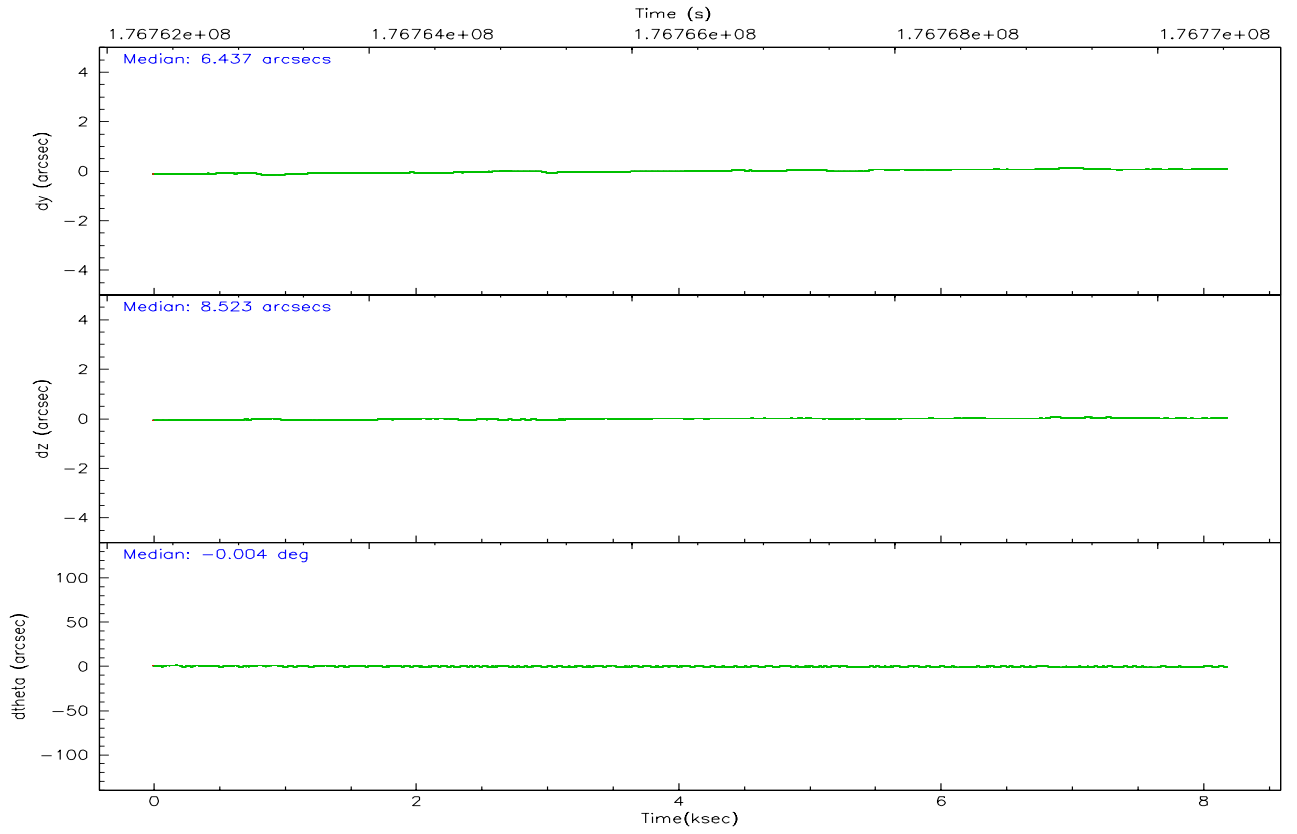
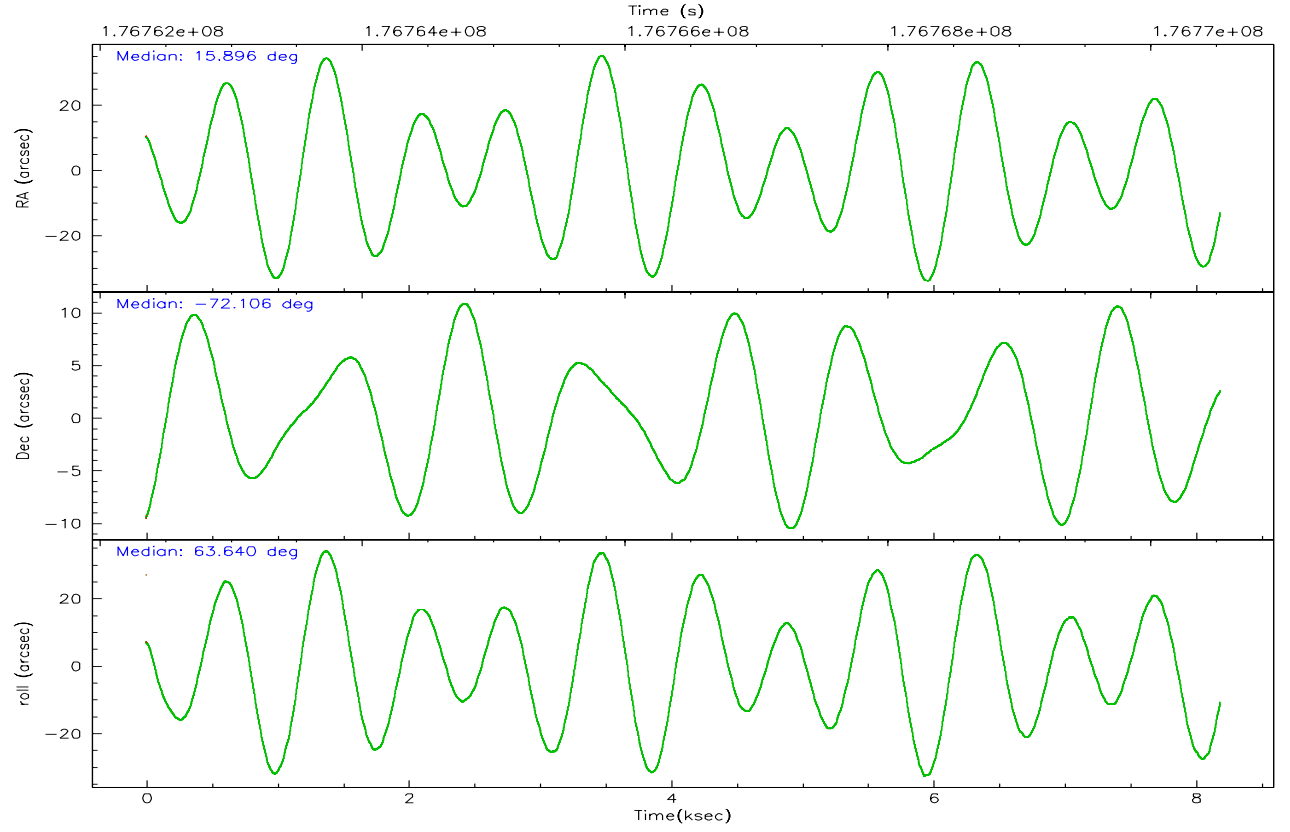
	ccd 2	ccd 3	ccd 5	ccd 6	ccd 7	ccd 8
grade 0 events	1715	1588	3195	27934	1583	3072
	4%	4%	6%	40%	4%	6%
grade 1 events	27	18	224	258	32	28
	0%	0%	0%	0%	0%	0%
grade 2 events	929	748	7459	2825	4570	2302
	2%	2%	15%	4%	12%	4%
grade 3 events	441	386	711	956	1182	1229
	1%	1%	1%	1%	3%	2%
grade 4 events	382	413	746	917	1166	1103
	0%	1%	1%	1%	3%	2%
grade 5 events	1049	1117	2717	1330	2871	1840
	2%	3%	5%	1%	7%	3%
grade 6 events	613	647	12596	915	9148	2703
	1%	1%	26%	1%	24%	5%
grade 7 events	35758	32159	19383	33078	16058	35800
	87%	86%	41%	48%	43%	74%

## 2.2 Compared Parameters

Parameter	Planned	Actual	Parameter	Planned	Actual
Instrument	ACIS	ACIS	Obspar format version number	6	6
Detector	ACIS-235678	ACIS-235678	Obspar file type	PREDICTED	ACTUAL
Grating	NONE	NONE	Obspar update status	NONE	UPDATED
Data mode	VFAINT	VFAINT	On-chip summing requested	N	N
Observation mode	POINTING	POINTING	Subarray requested	NONE	NONE
Pointing RA	15.903279	15.89624382307579	Alternating exposures requested	N	N
Pointing Dec	-72.133169	-72.10602480196492	Primary exposure time	0.000000	3.2
Pointing Roll	63.495027	63.64496200900096			
Window start time	174614464.184000	174614464.184000			
Window stop time	177292864.184000	177292864.184000			
SIM focus pos (mm)	-0.684267	-0.6828225247311905			
SIM defocus (mm)	0	0.001444936568705701			
SIM translation stage pos (mm)	-190.132523	-190.1400660498719			
SIM translation stage offset (mm)	0	0.00754346686406393			
Observation start time	176762533.184000	176762157.58247			
Observation start date	2003-08-08T20:41:09	2003-08-08T20:35:57			
Observation end time	176770533.184000	176770667.13284			
Observation end date	2003-08-08T22:54:29	2003-08-08T22:57:47			
Read mode	TIMED	TIMED			

## 2.3 Aspect





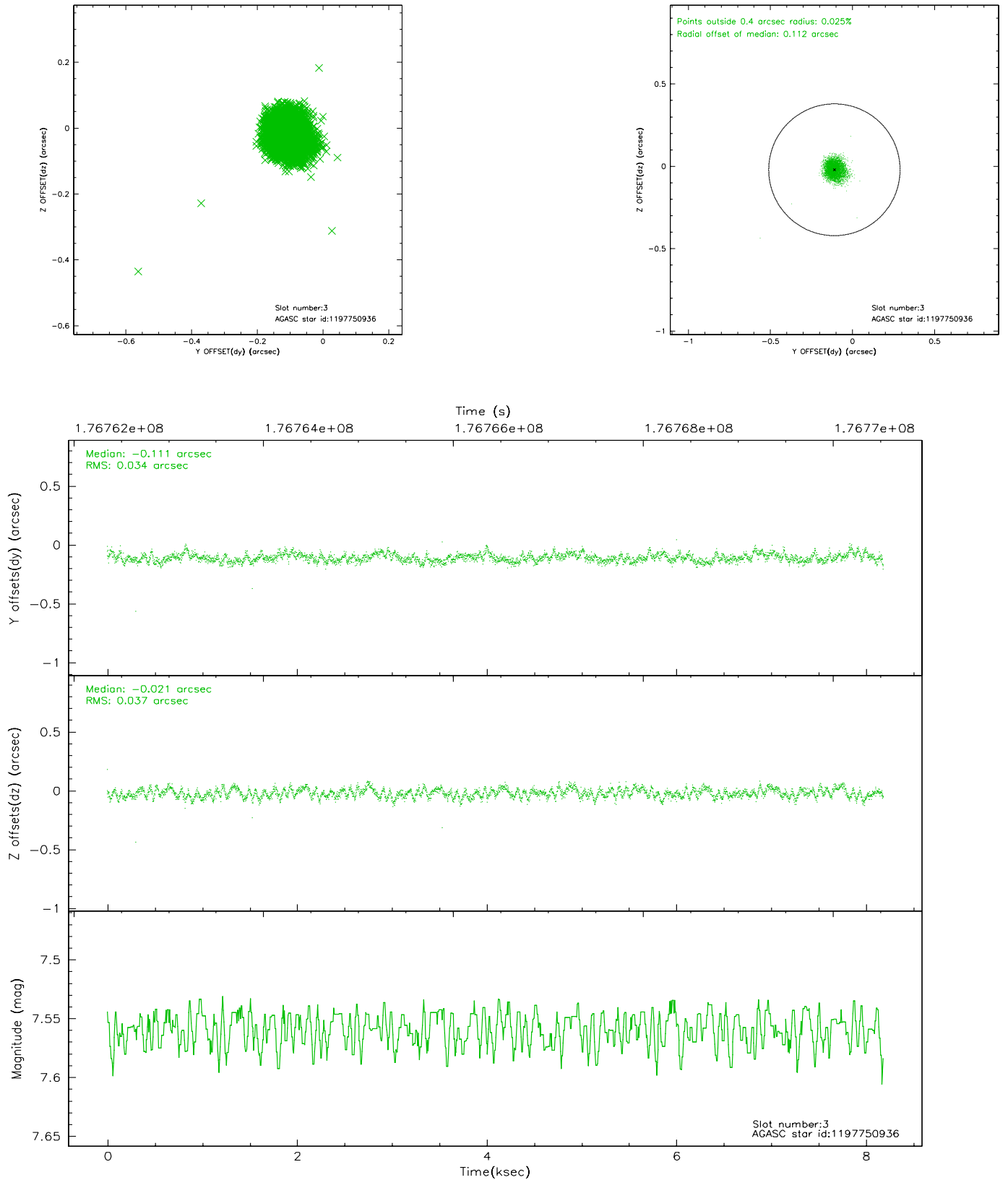
### Slot Statistics

slot	status	id	mag	n_pts	med_dy	med_dz	dr1	dr2	ra	dec	mean_y	mean_z
0	FID	ACIS-S-2	7.10	1998	-0.020	-0.018	0.006	0.010	0.000000	0.000000	-759.21	-1729.74
1	FID	ACIS-S-4	7.20	1998	0.015	0.015	0.005	0.008	0.000000	0.000000	2153.81	178.05
2	FID	ACIS-S-5	7.22	1998	-0.025	0.012	0.006	0.009	0.000000	0.000000	-1811.16	172.53
3	GUIDE	1197750936	7.56	3995	-0.111	-0.021	0.054	0.084	15.387940	-71.549550	1615.82	1461.94
4	GUIDE	1197884536	8.51	3995	0.124	0.095	0.057	0.094	17.160729	-71.835289	1577.05	-790.30
5	GUIDE	1197885104	9.35	3993	-0.024	0.063	0.093	0.153	17.845067	-72.189368	742.65	-2018.91
6	GUIDE	1197885328	7.24	3995	-0.027	-0.189	0.054	0.086	16.283090	-71.733943	1476.88	256.39
7	GUIDE	1198189696	7.35	3994	0.031	0.055	0.061	0.092	15.223750	-72.697522	-2145.88	-257.62

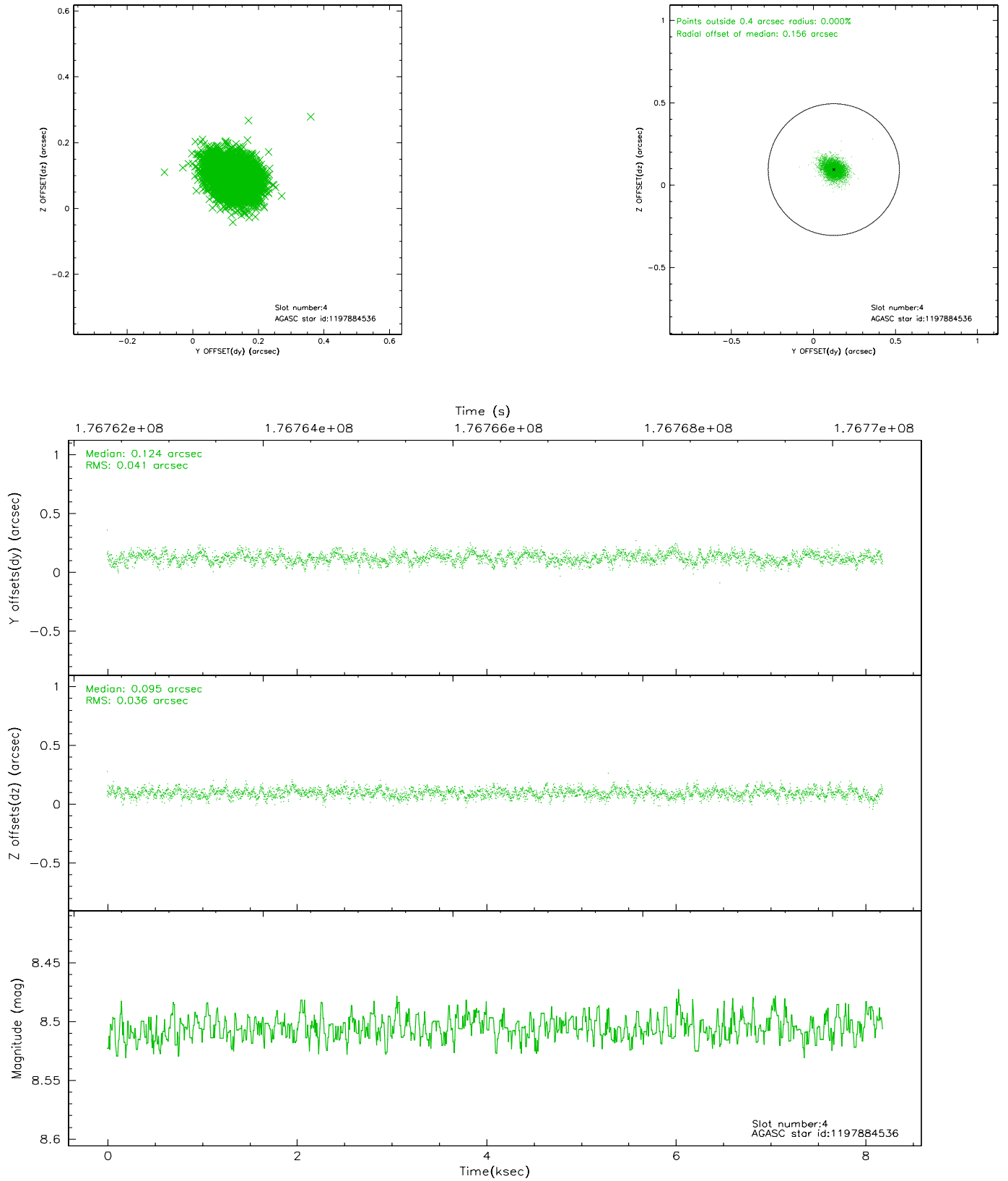


## 2.4 Star Slots

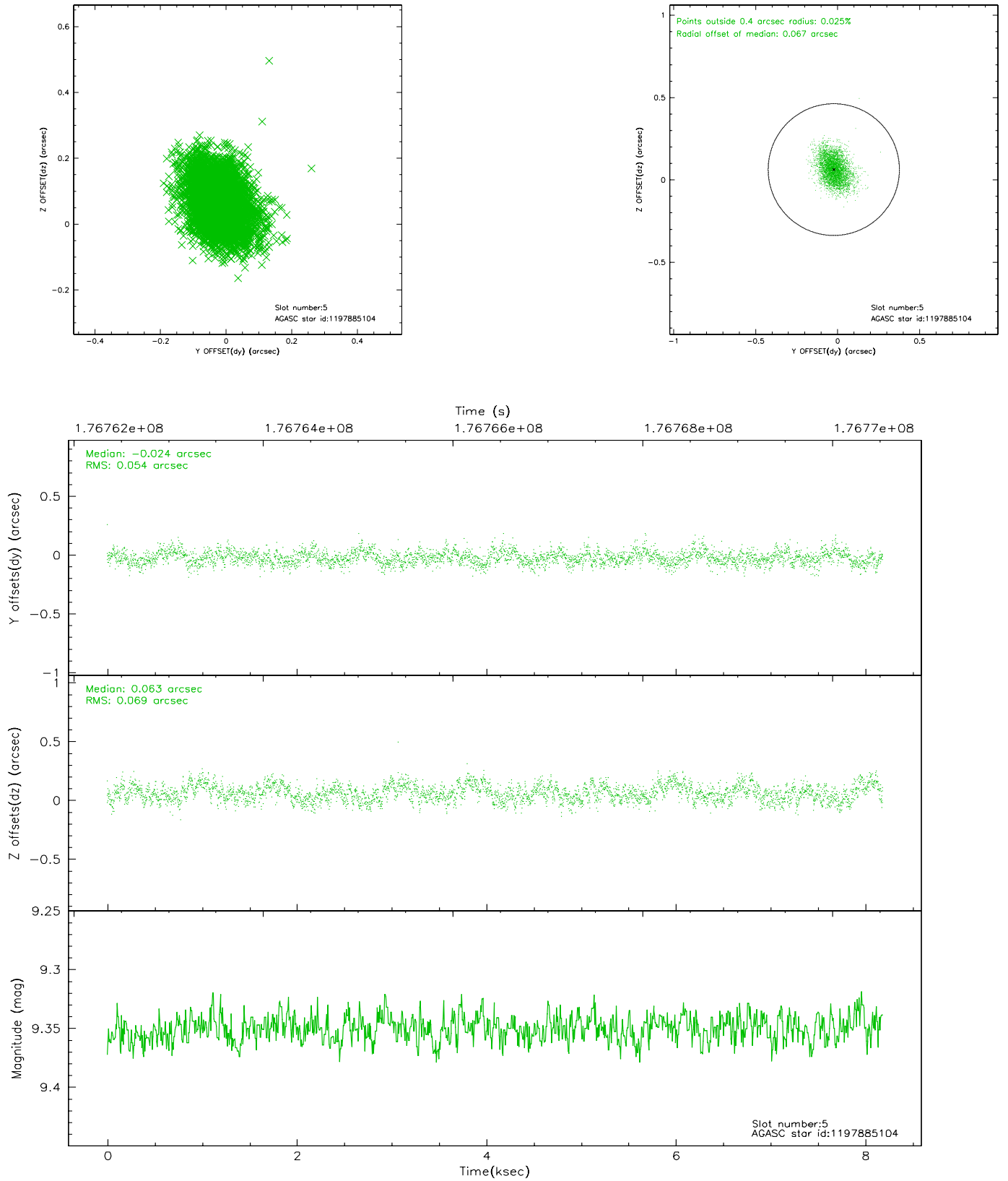
### 2.4.1 Slot 3



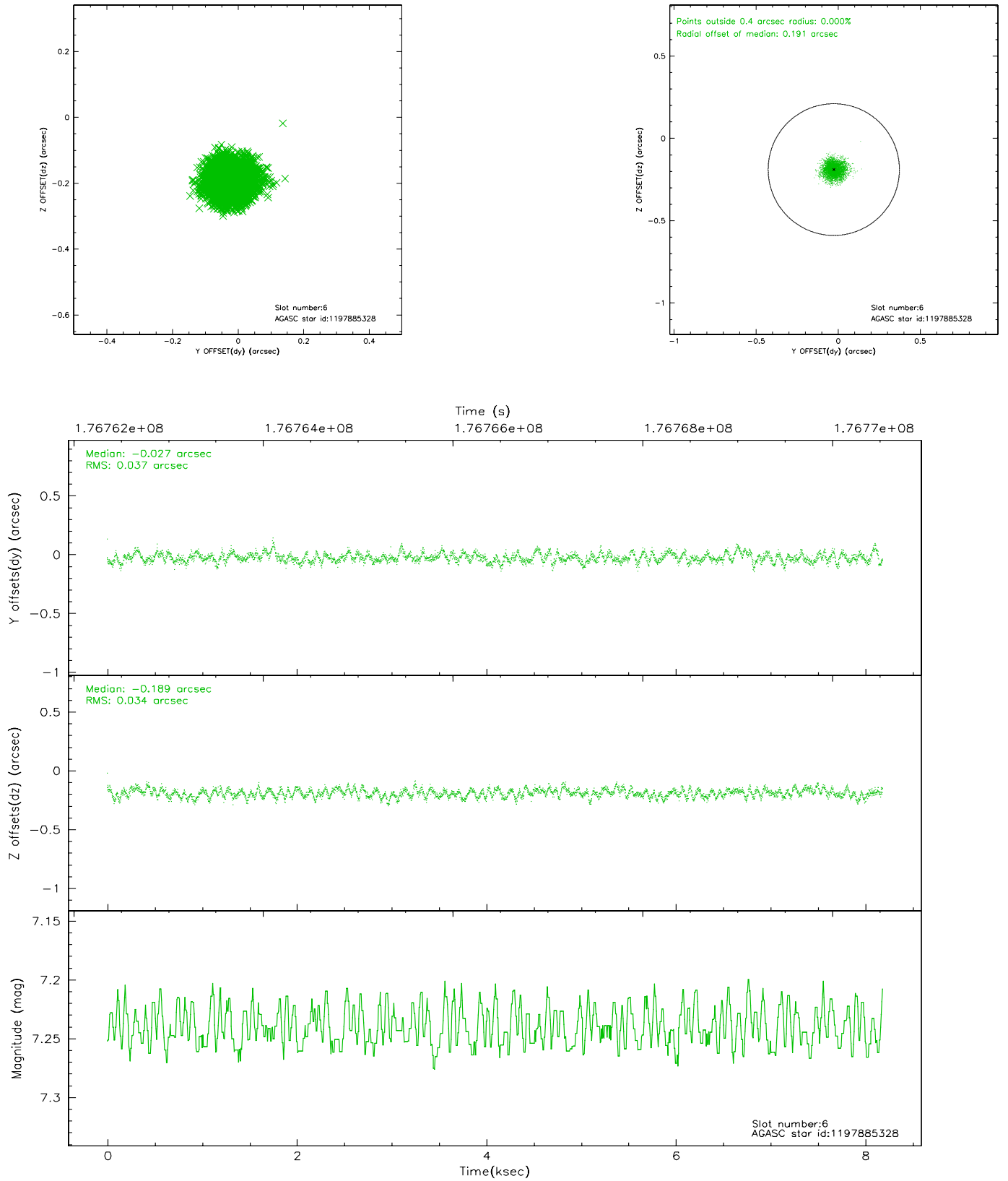
## 2.4.2 Slot 4



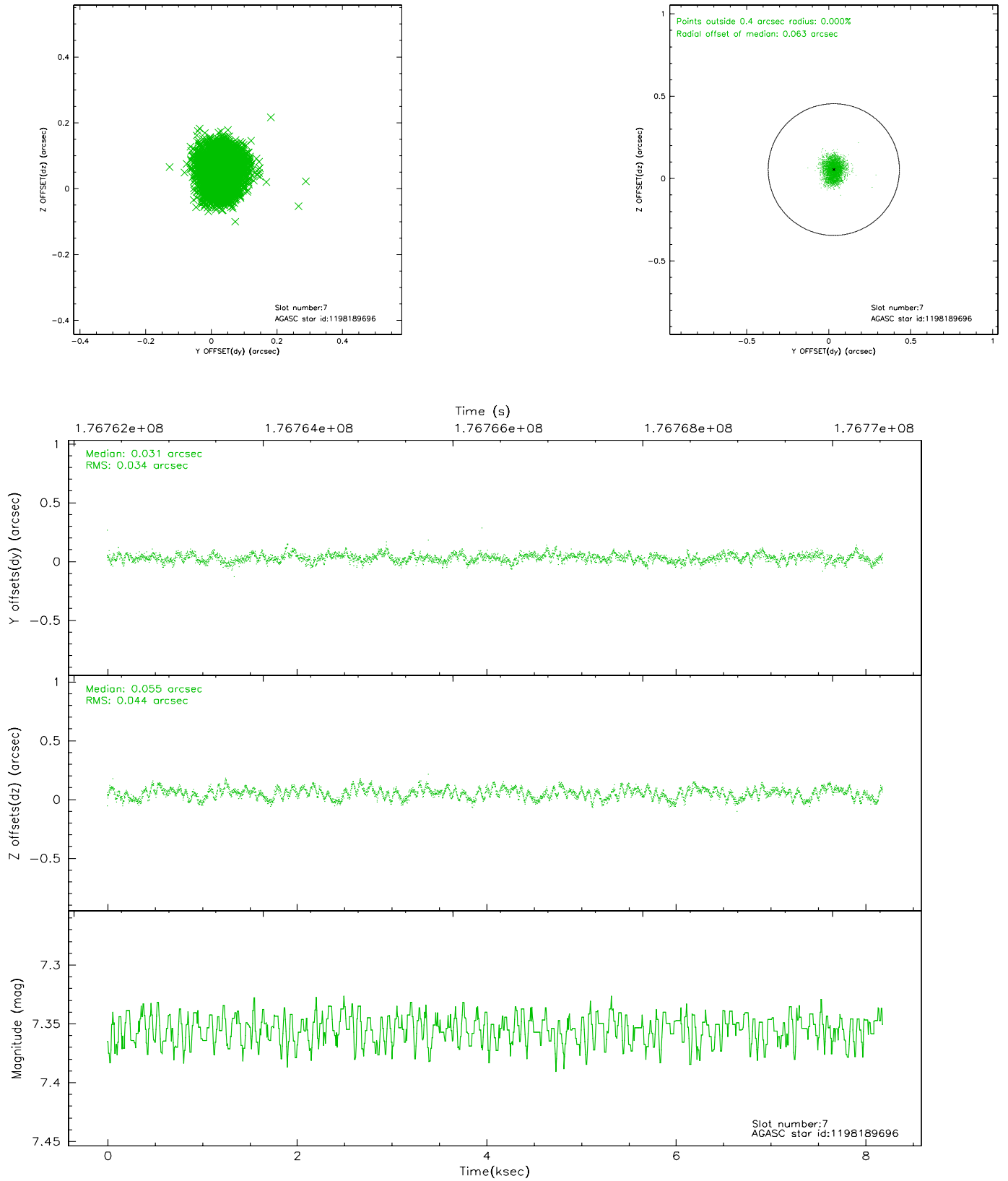
### 2.4.3 Slot 5



## 2.4.4 Slot 6

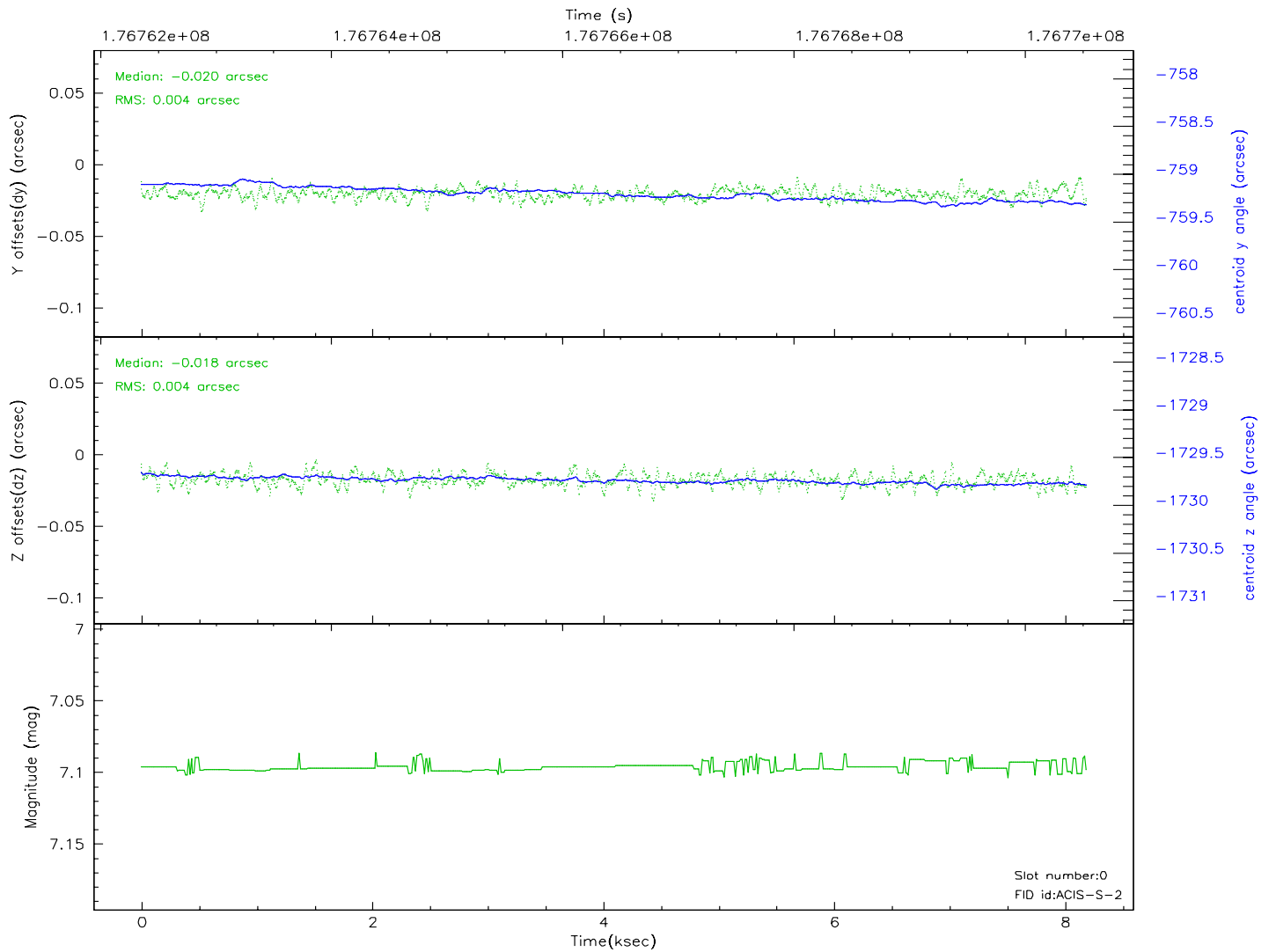
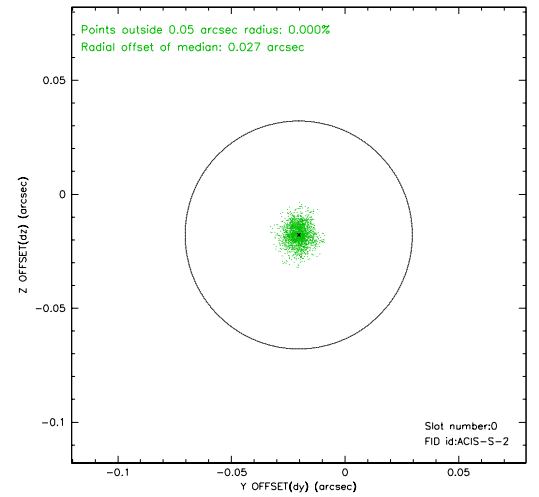
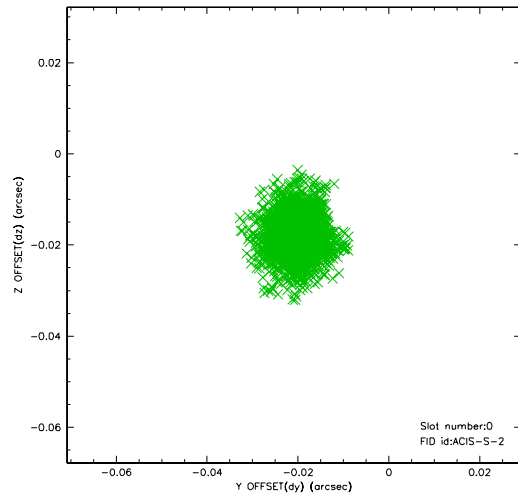


## 2.4.5 Slot 7

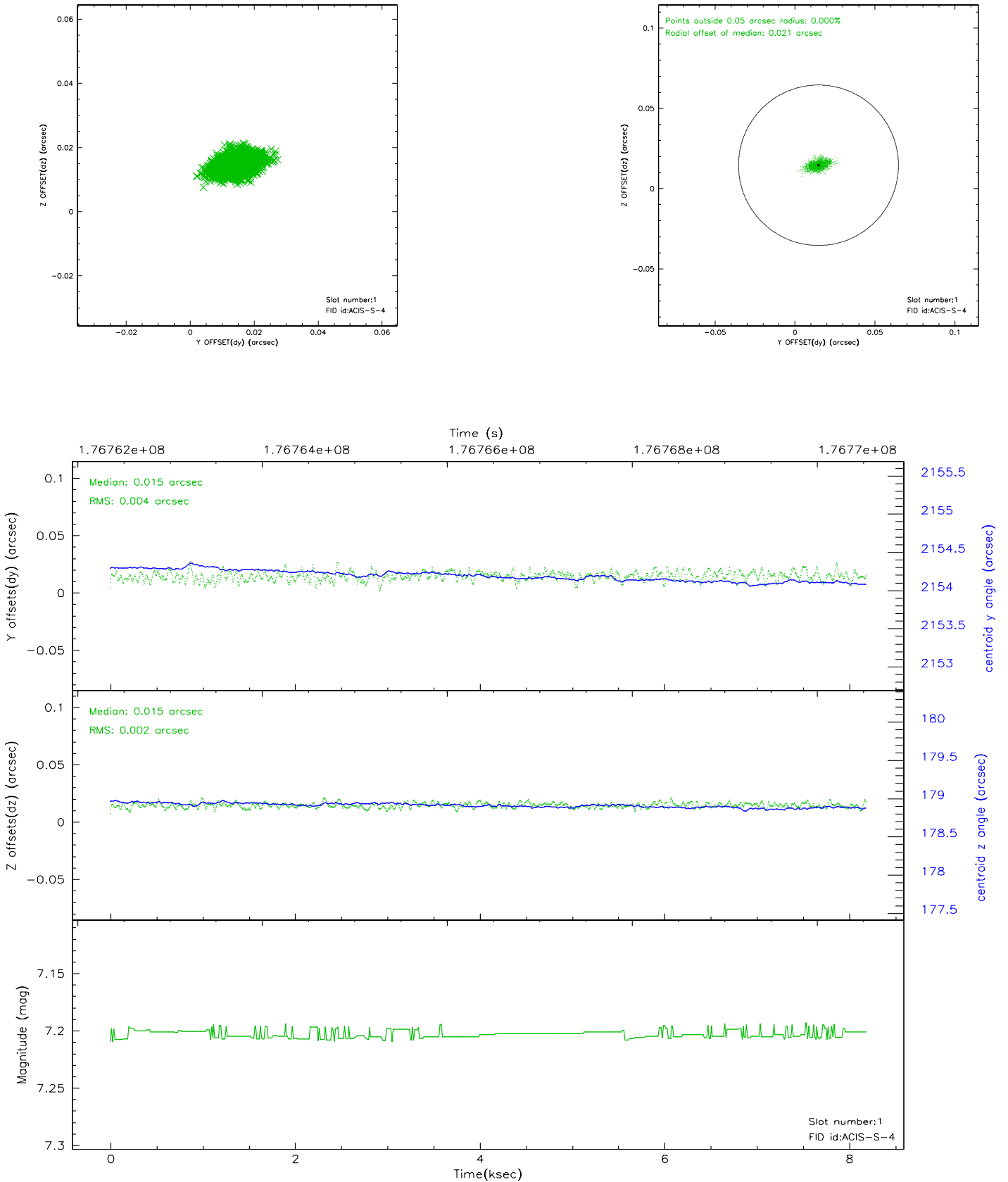


## 2.5 FID Slots

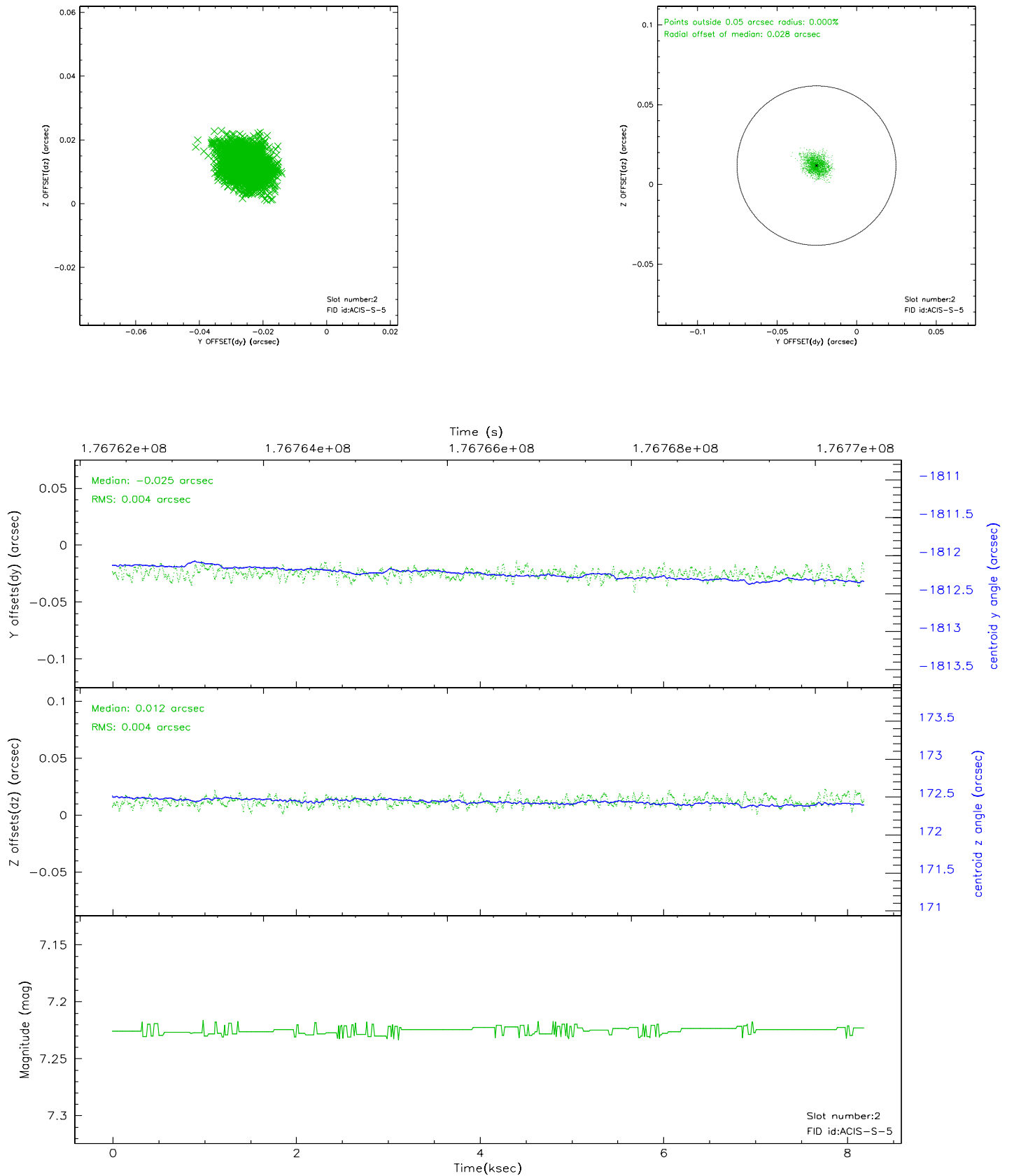
### 2.5.1 Slot 0



## 2.5.2 Slot 1

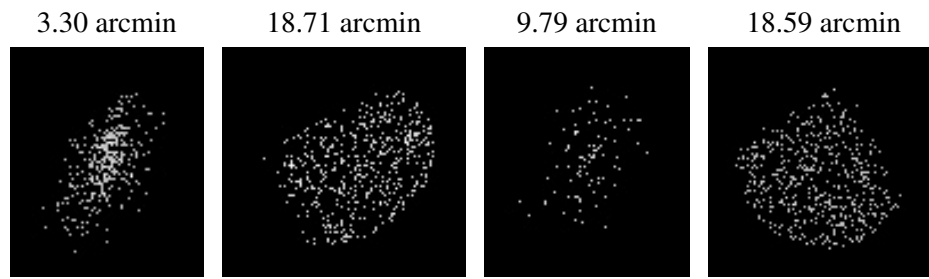


### 2.5.3 Slot 2





### 3 Point Sources



## A Summary

### A.1 Status

V&V Scientist	Jen Lauer
V&V Date (YYYY-MM-DD)	2006.07.11
V&V Edition	1
V&V Disposition and Status	OK
V&V Charge Time	7.756

### A.2 Comments

Window constraint met.