

V&V Reference Report

L2 ASCDS Version : 7.6.8

Observation 3537 - L2 Version 001
Chandra X-Ray Center

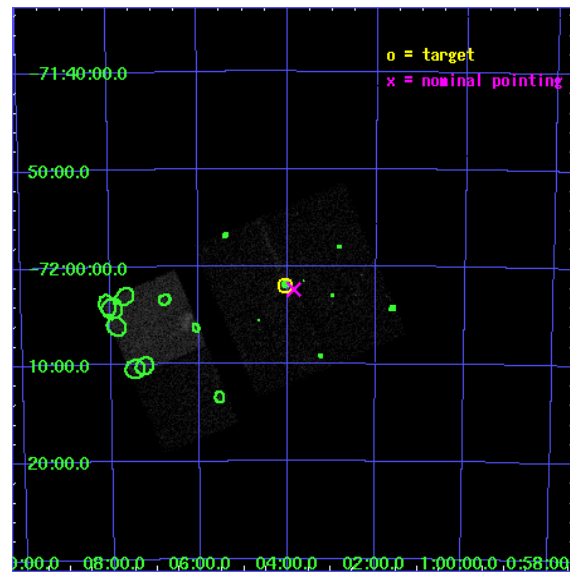
L2 Processing Date : Jul 20 2006

Contents

1	Front	2
2	OBI	3
2.1	OBI	3
2.1.1	Images	3
2.1.2	Bias	3
2.1.3	Parameters	4
2.1.4	Events	4
2.2	Compared Parameters	5
2.3	Aspect	6
2.4	Star Slots	9
2.4.1	Slot 3	9
2.4.2	Slot 4	10
2.4.3	Slot 5	11
2.4.4	Slot 6	12
2.4.5	Slot 7	13
2.5	FID Slots	14
2.5.1	Slot 0	14
2.5.2	Slot 1	15
2.5.3	Slot 2	16
3	Point Sources	17
A	Summary	18
A.1	Status	18
A.2	Comments	18

1 Front

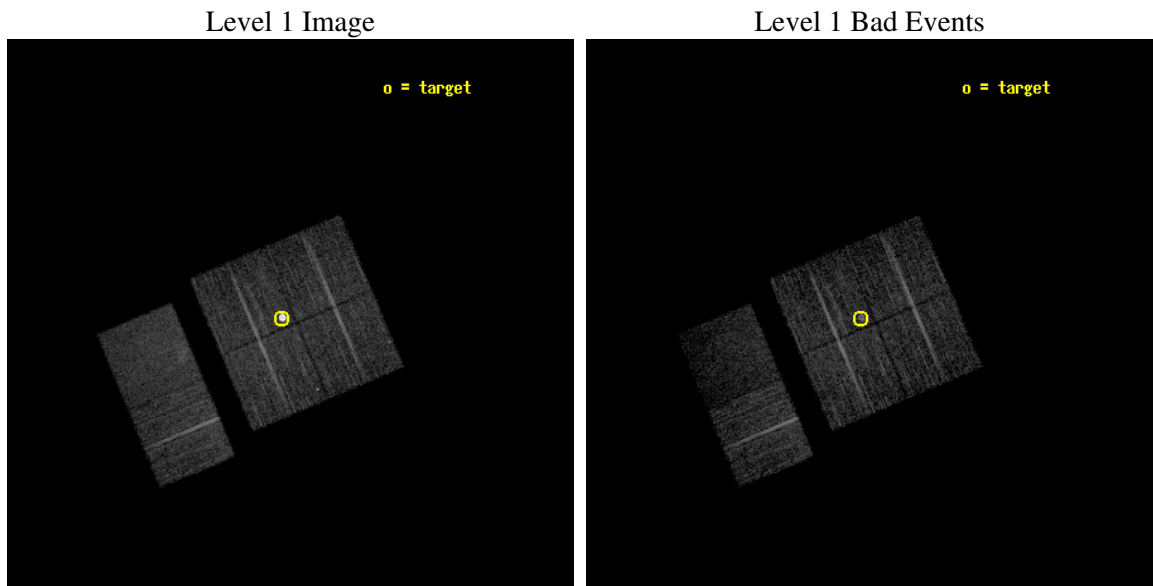
seq_num	590292
obs_id	3537
title	AO4A ACIS-I CALIBRATION OBSERVATIONS OF E0102-72
observer	Dr. CXC Calibration
object	E0102-72[I3,-120,-0.5,0.5,0]
dtcycle	0
cycle	P
ra_targ	16.01
dec_targ	-72.032028
ra_nom	15.96367743201
dec_nom	-72.039675584795
roll_nom	247.13871742101
revision	2
ontime	7731.199971199
livetime	7633.302861994
ontime0	7727.9590009451
ontime1	7731.199971199
ontime2	7731.199971199
ontime3	7731.199971199
ontime6	7731.199971199
ontime7	7731.199971199
l2events	59764



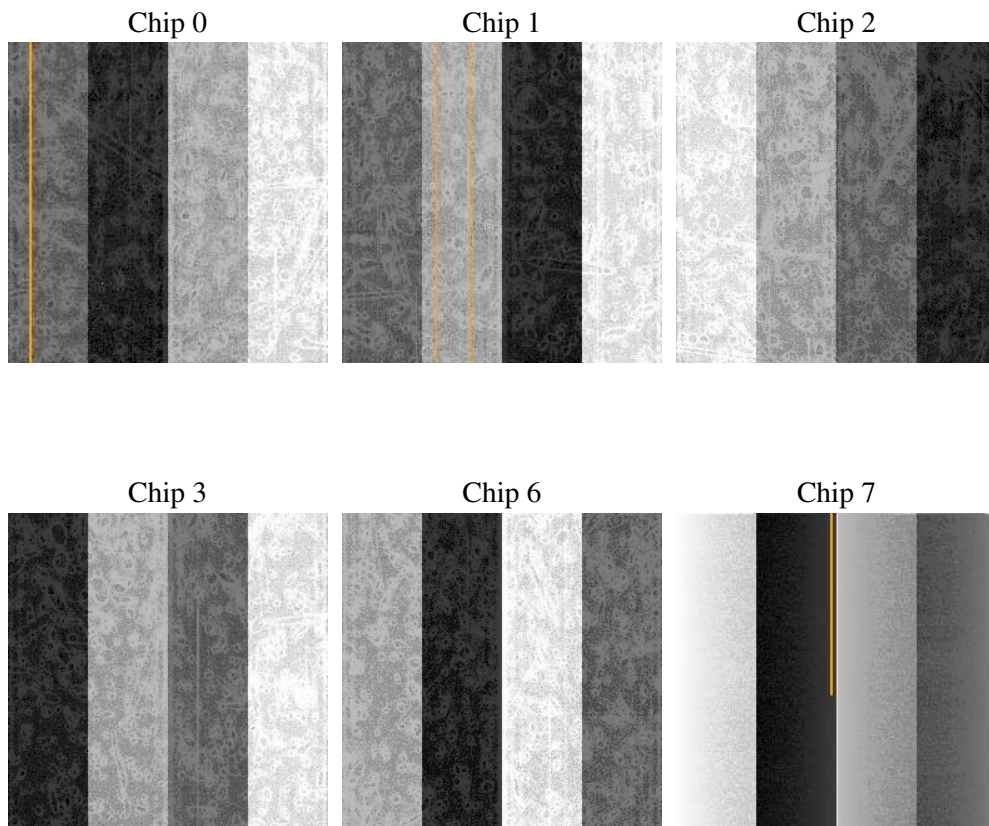
2 OBI

2.1 OBI

2.1.1 Images



2.1.2 Bias



2.1.3 Parameters

obi_num	0
ascdsver	7.6.8
caldsver	3.2.2
date	2006-07-20T14:39:21
revision	2

sched_exp_time	7973.000000
ontime	7736.2670145631
ontime0	7733.0260443091
ontime1	7736.2670145631
ontime2	7736.2670145631
ontime3	7736.2670145631
ontime6	7736.2670145631
ontime7	7736.2670145631
l1events	244434

2.1.4 Events

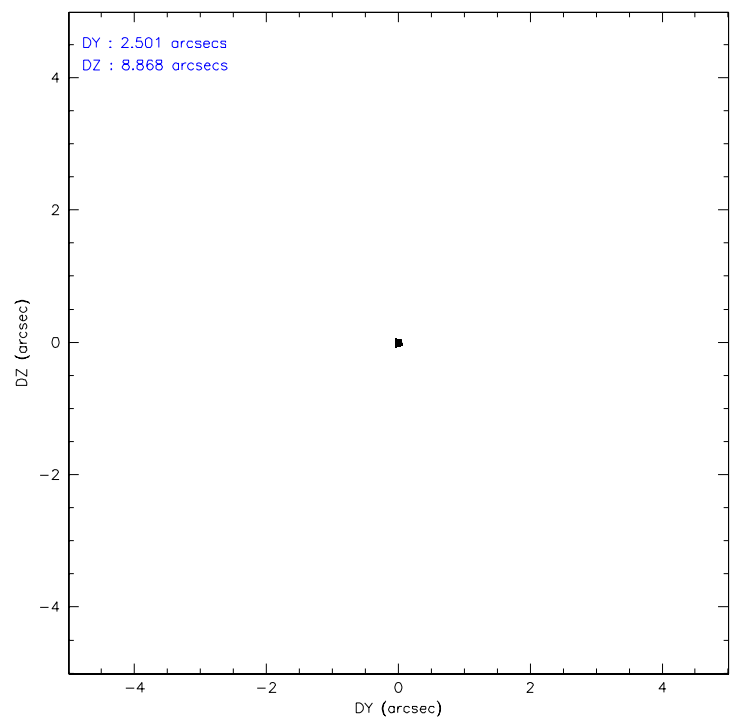
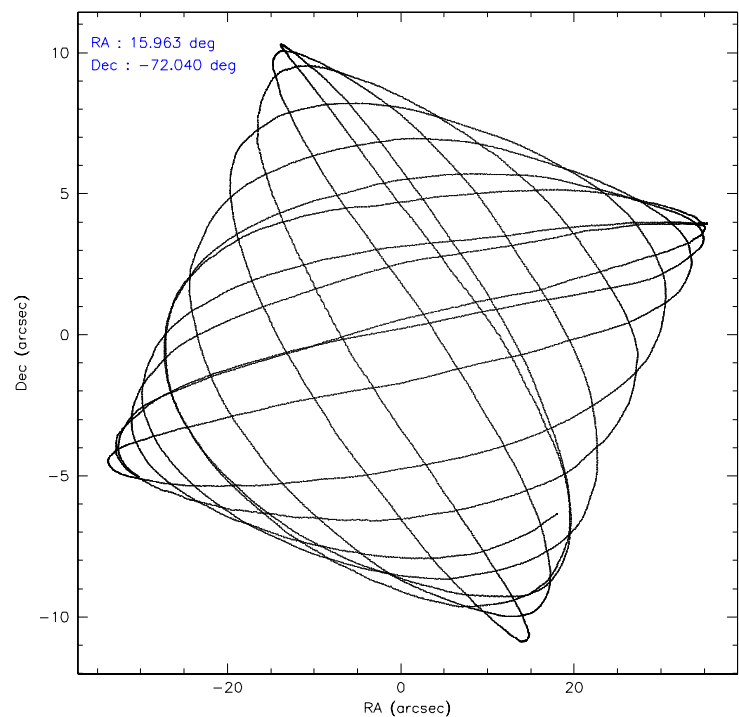
	ccd 0	ccd 1	ccd 2	ccd 3	ccd 6	ccd 7
level 1 events	34660	33491	40279	62417	38157	35430
rejected events	30533	29540	35750	32204	34009	18666
rejected %	88%	88%	88%	51%	89%	52%

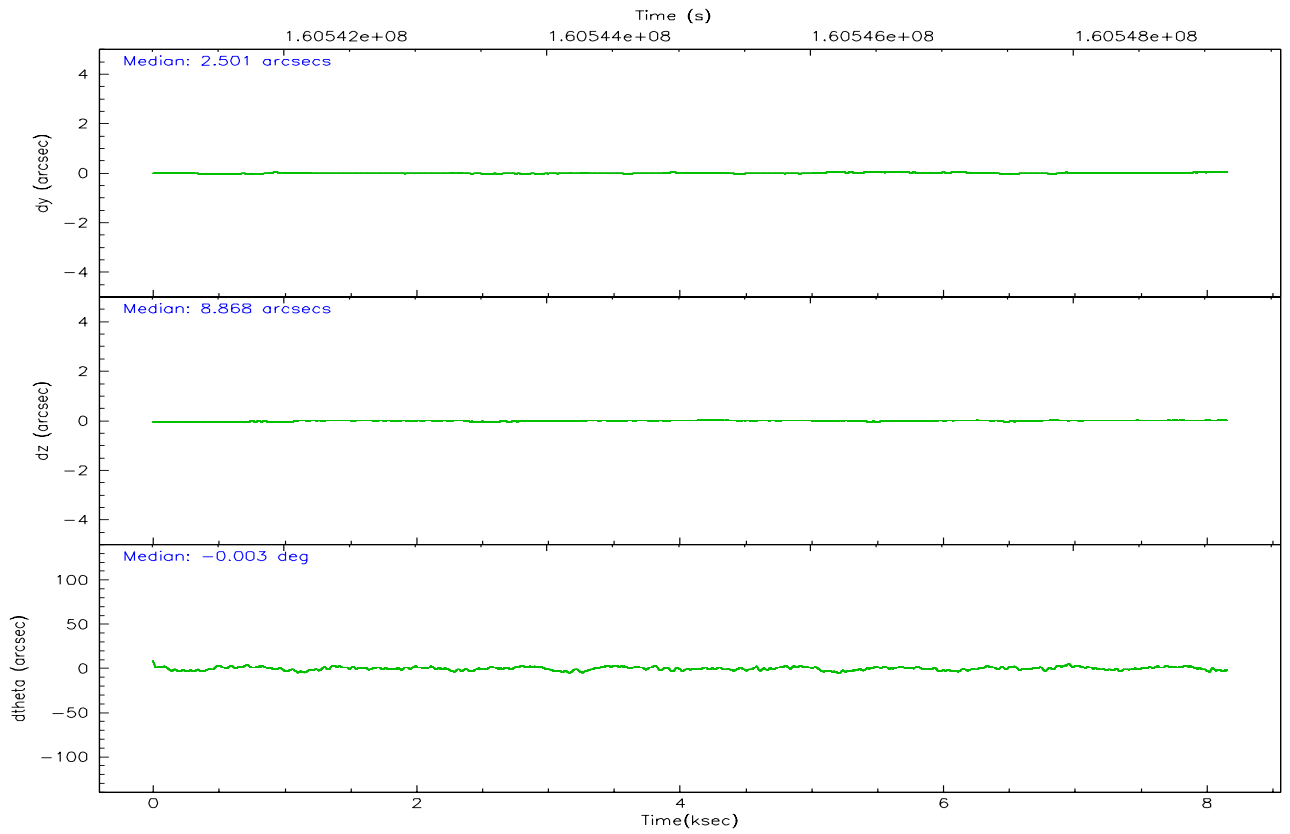
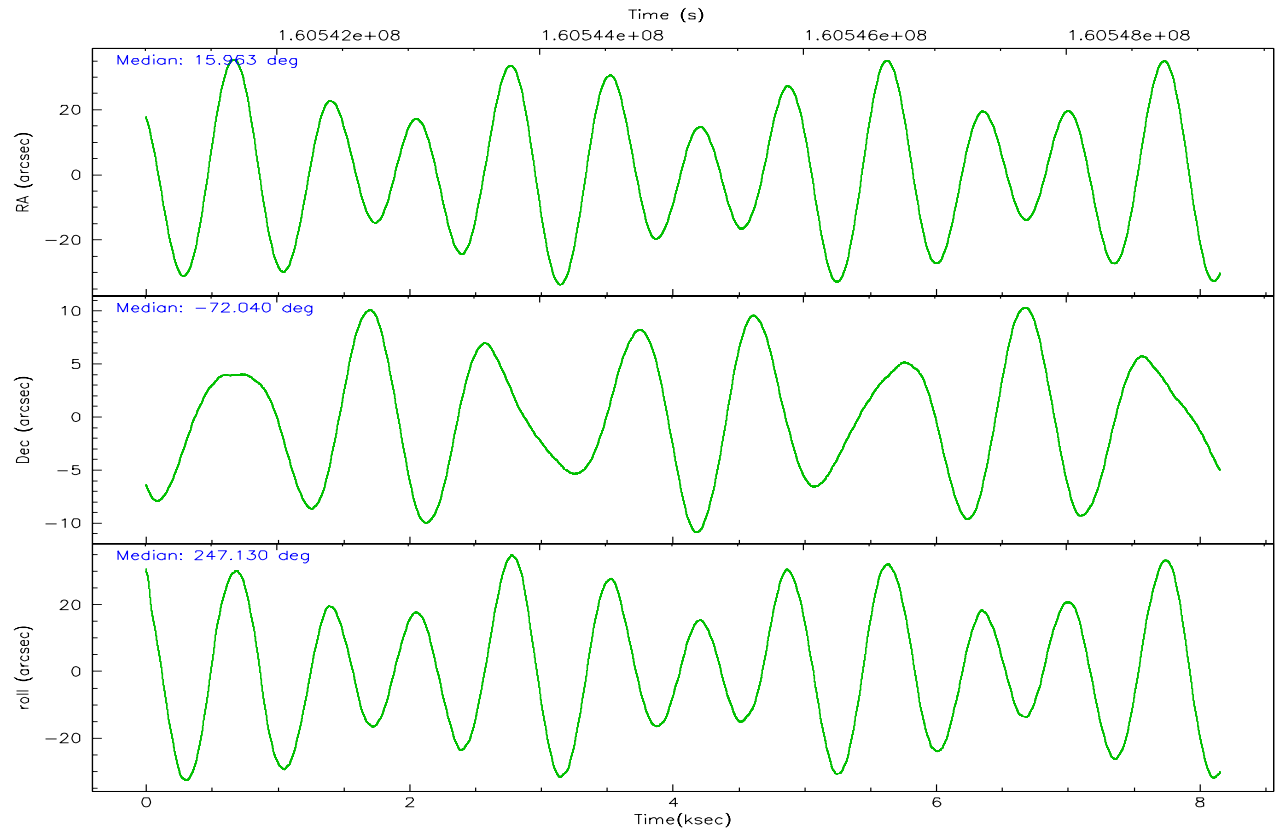
	ccd 0	ccd 1	ccd 2	ccd 3	ccd 6	ccd 7
grade 0 events	1754	1588	2138	25392	1648	1411
	5%	4%	5%	40%	4%	3%
grade 1 events	13	20	19	305	18	21
	0%	0%	0%	0%	0%	0%
grade 2 events	862	820	942	2479	825	4266
	2%	2%	2%	3%	2%	12%
grade 3 events	450	456	435	809	444	1142
	1%	1%	1%	1%	1%	3%
grade 4 events	426	435	397	782	436	1089
	1%	1%	0%	1%	1%	3%
grade 5 events	1050	1142	1011	1223	1209	2796
	3%	3%	2%	1%	3%	7%
grade 6 events	639	654	618	777	796	8874
	1%	1%	1%	1%	2%	25%
grade 7 events	29466	28376	34719	30650	32781	15831
	85%	84%	86%	49%	85%	44%

2.2 Compared Parameters

Parameter	Planned	Actual	Parameter	Planned	Actual
Instrument	ACIS	ACIS	Obspar format version number	6	6
Detector	ACIS-012367	ACIS-012367	Obspar file type	PREDICTED	ACTUAL
Grating	NONE	NONE	Obspar update status	NONE	UPDATED
Data mode	VFAINT	VFAINT	On-chip summing requested	N	N
Observation mode	POINTING	POINTING	Subarray requested	NONE	NONE
Pointing RA	15.952401	15.9636774320103	Alternating exposures requested	N	N
Pointing Dec	-72.012491	-72.03967558479471	Primary exposure time	0.000000	3.2
Pointing Roll	246.919307	247.1387174210098			
Window start time	158976064.184000	158976064.184000			
Window stop time	161654464.184000	161654464.184000			
SIM focus pos (mm)	-0.782348	-0.7809083437167272			
SIM defocus (mm)	0	0.001439871863259334			
SIM translation stage pos (mm)	-233.592463	-233.5874344608287			
SIM translation stage offset (mm)	0	-0.005018542100998502			
Observation start time	160541188.184000	160540812.34593			
Observation start date	2003-02-02T02:45:24	2003-02-02T02:40:12			
Observation end time	160549161.184000	160549295.24629			
Observation end date	2003-02-02T04:58:17	2003-02-02T05:01:35			
Read mode	TIMED	TIMED			

2.3 Aspect



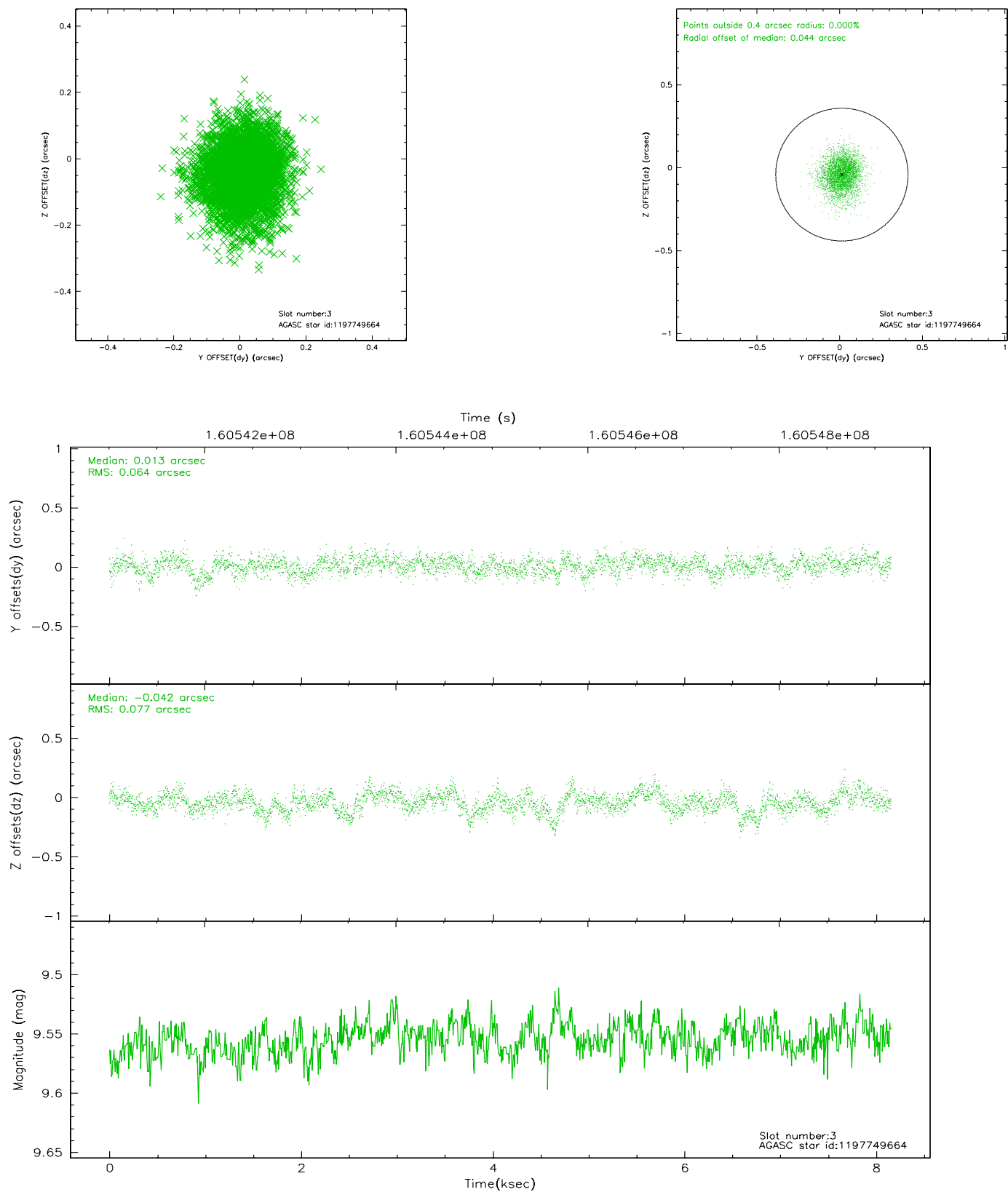


Slot Statistics

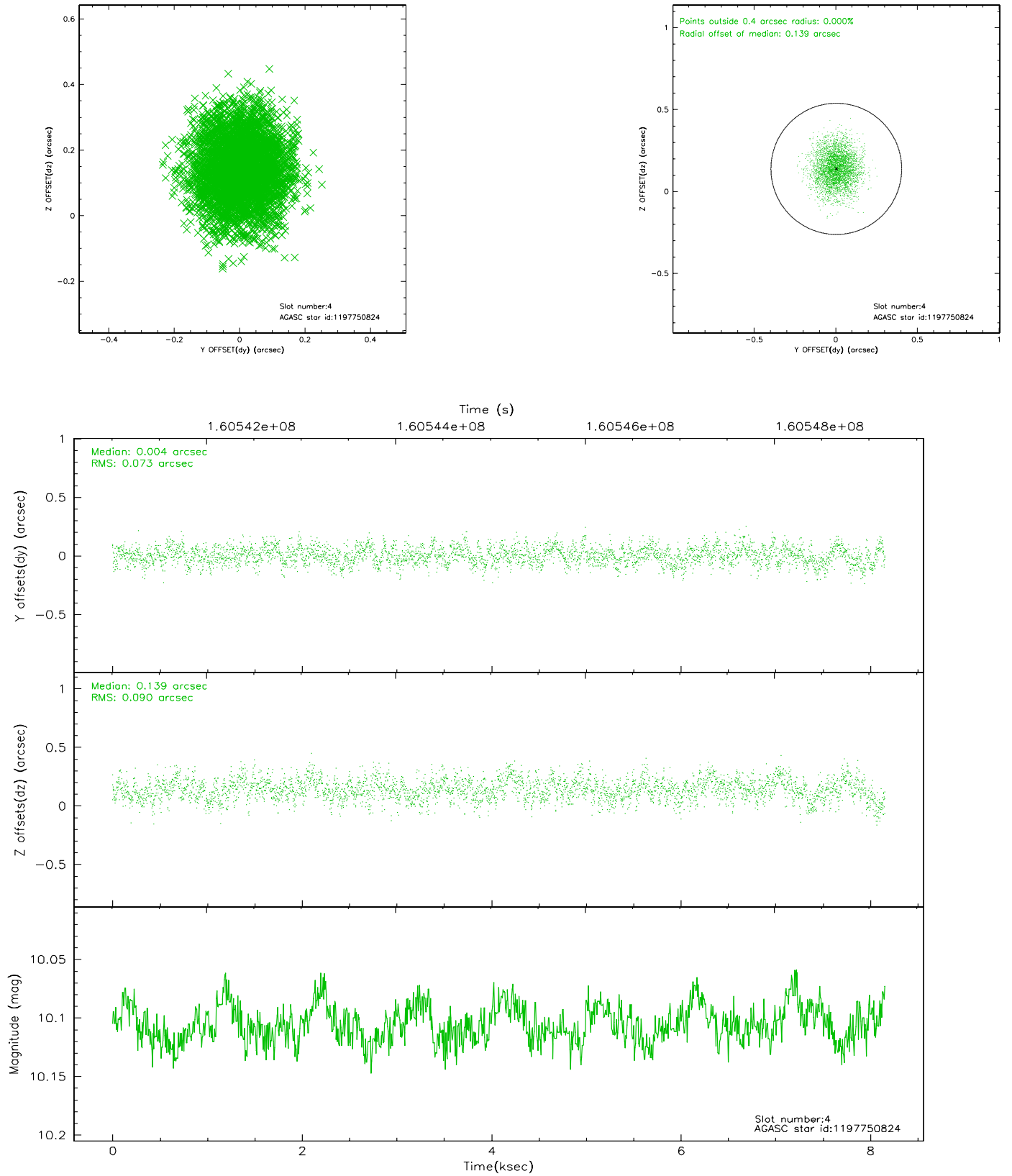
slot	status	id	mag	n_pts	med_dy	med_dz	dr1	dr2	ra	dec	mean_y	mean_z
0	FID	ACIS-I-1	7.24	1990	-0.116	0.099	0.012	0.021	0.000000	0.000000	937.20	-832.20
1	FID	ACIS-I-2	7.15	1990	-0.008	-0.050	0.008	0.012	0.000000	0.000000	-756.40	-839.15
2	FID	ACIS-I-4	7.18	1990	0.026	0.019	0.011	0.019	0.000000	0.000000	2156.89	1067.20
3	GUIDE	1197749664	9.55	3964	0.013	-0.042	0.105	0.176	15.809015	-72.366369	1233.35	356.11
4	GUIDE	1197750824	10.11	3979	0.004	0.139	0.125	0.201	14.791487	-71.393477	-1515.00	-2095.04
5	GUIDE	1197885104	9.38	3980	-0.053	-0.158	0.108	0.164	17.845067	-72.189368	-201.54	2178.93
6	GUIDE	1198190968	10.01	3979	0.046	0.078	0.112	0.180	15.749622	-72.545972	1852.85	552.78
7	GUIDE	1197750936	7.56	3978	-0.014	-0.018	0.062	0.106	15.387940	-71.549550	-1277.61	-1243.54

2.4 Star Slots

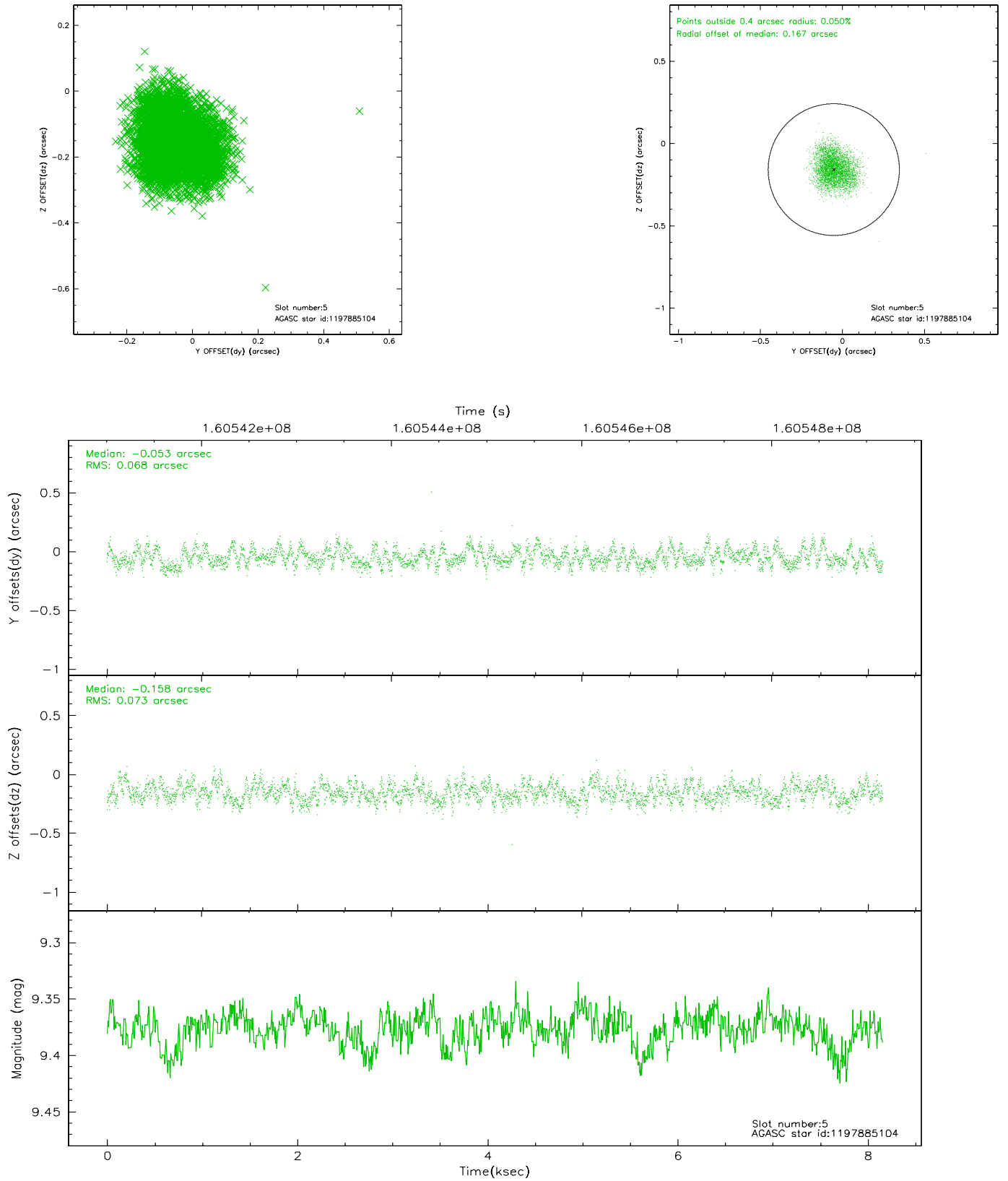
2.4.1 Slot 3



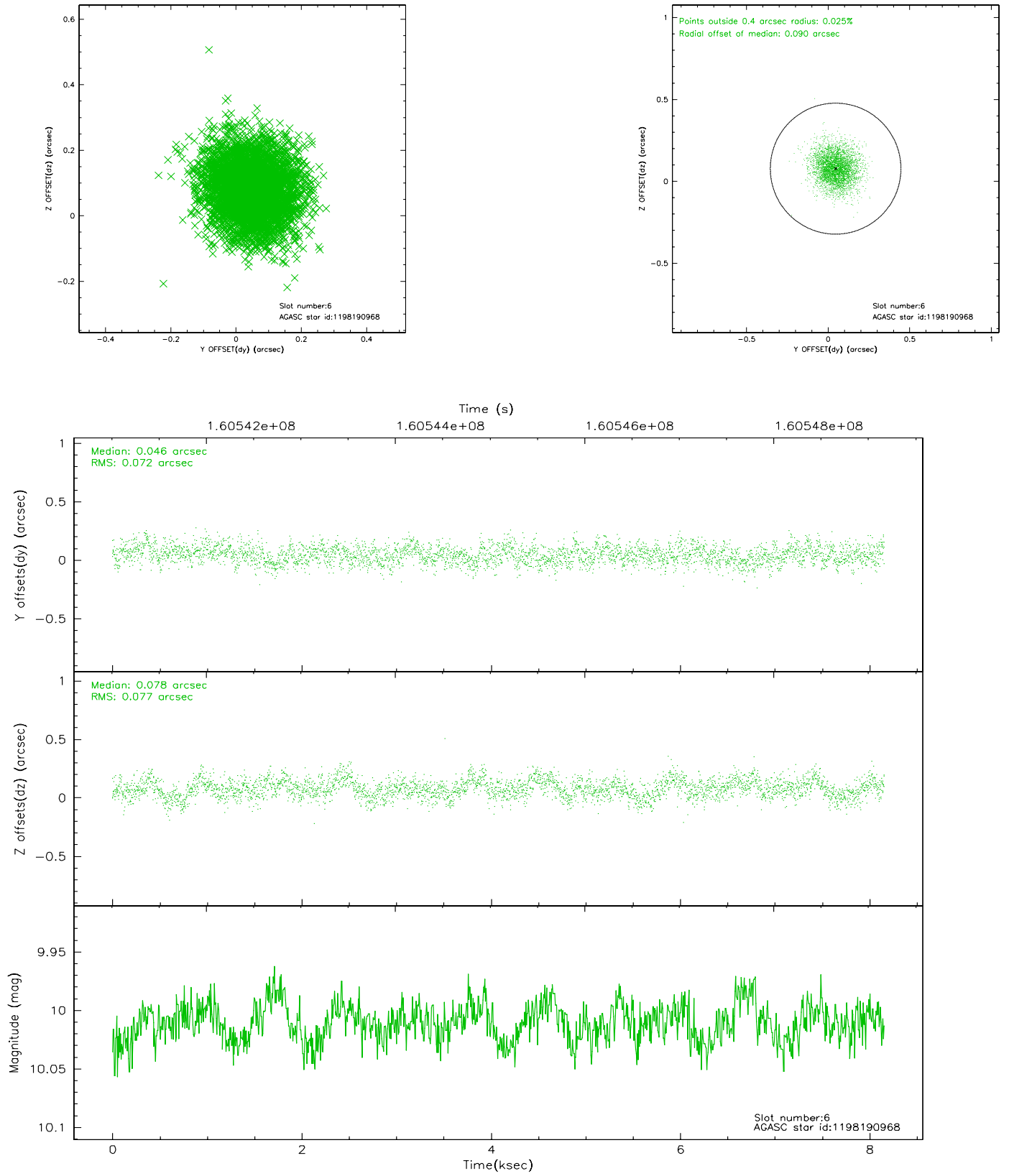
2.4.2 Slot 4



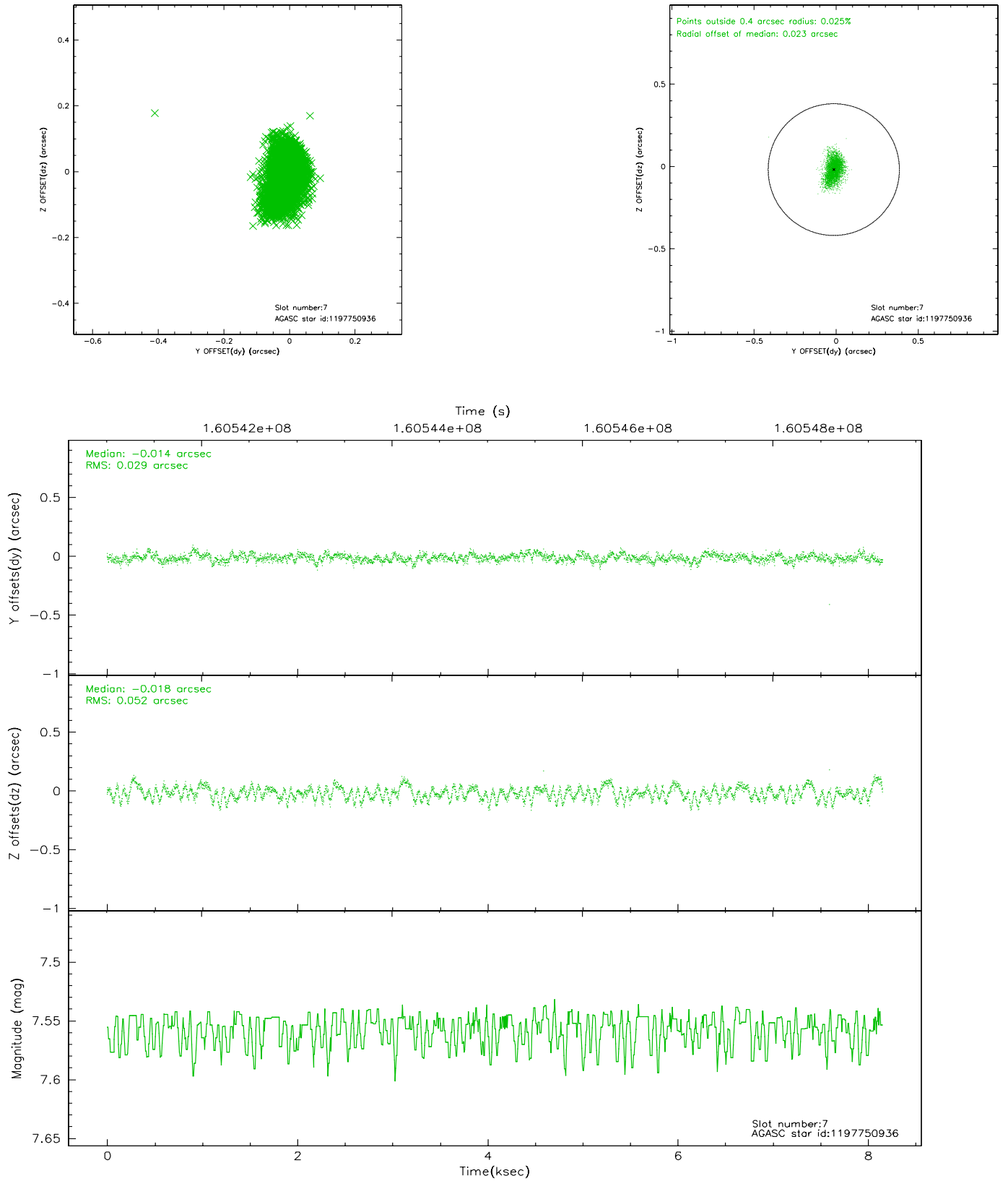
2.4.3 Slot 5



2.4.4 Slot 6

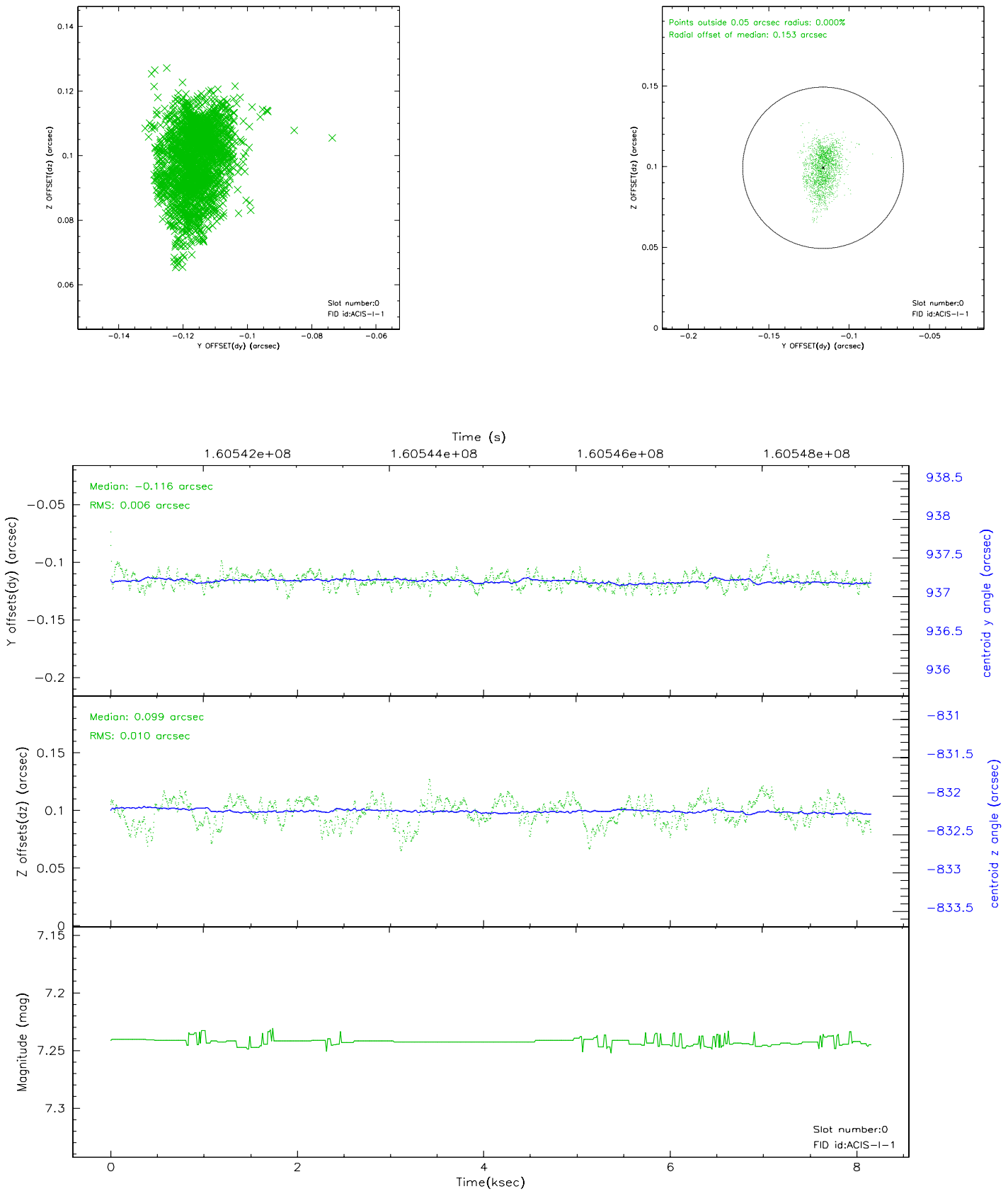


2.4.5 Slot 7

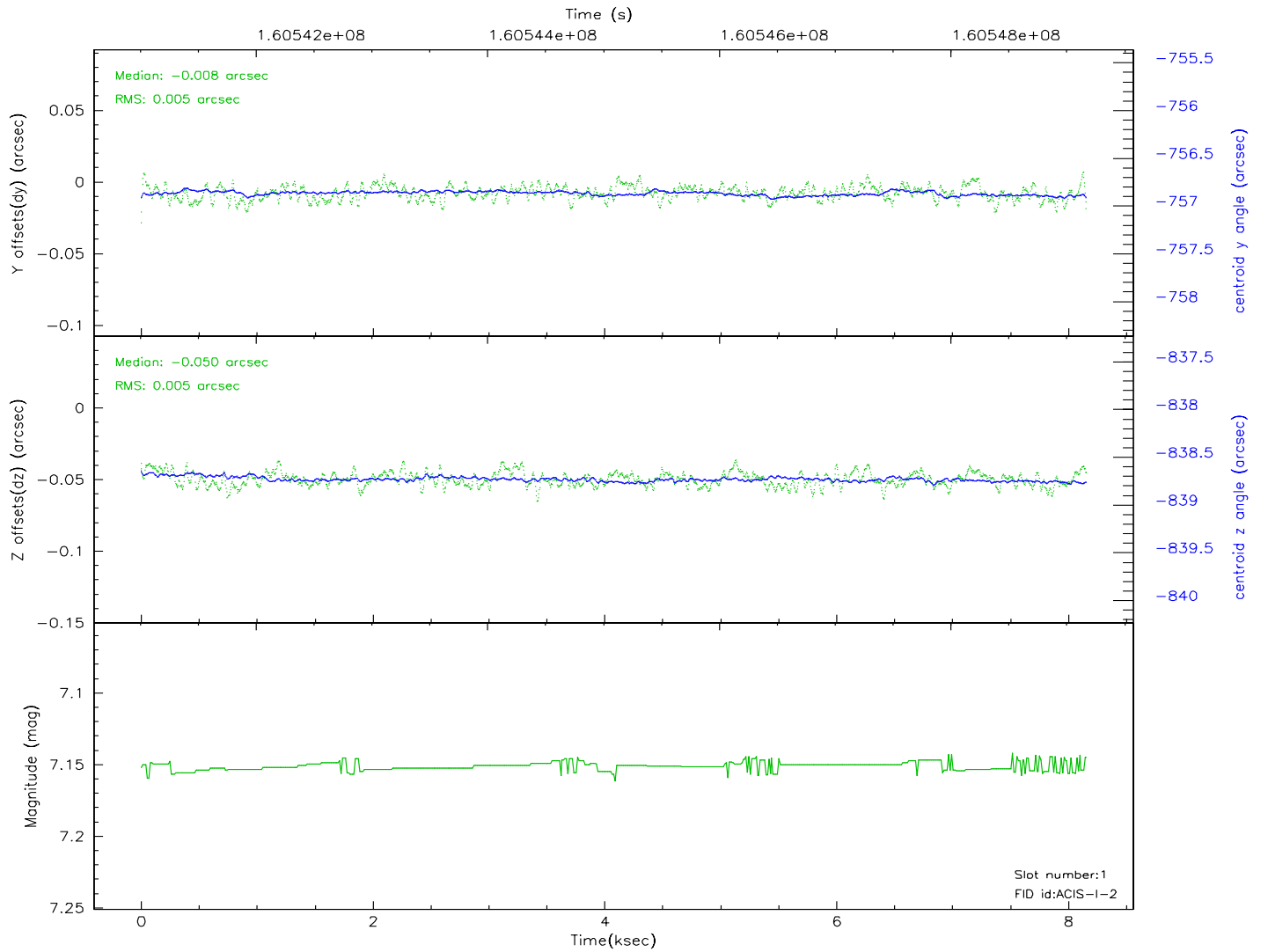
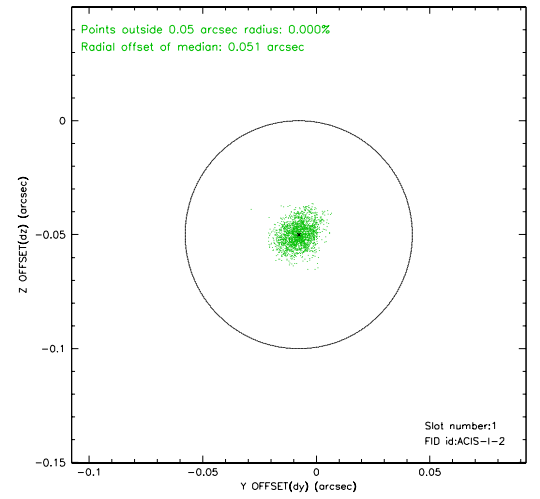
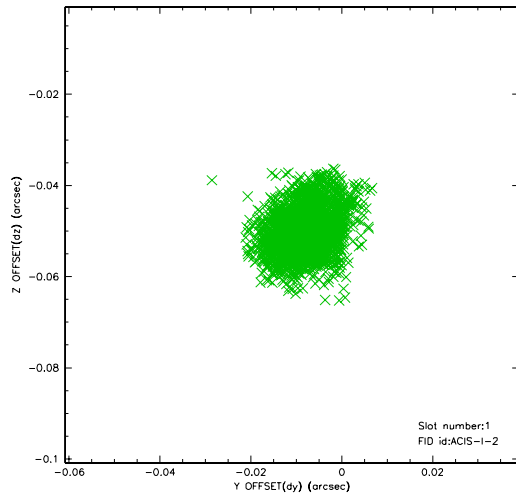


2.5 FID Slots

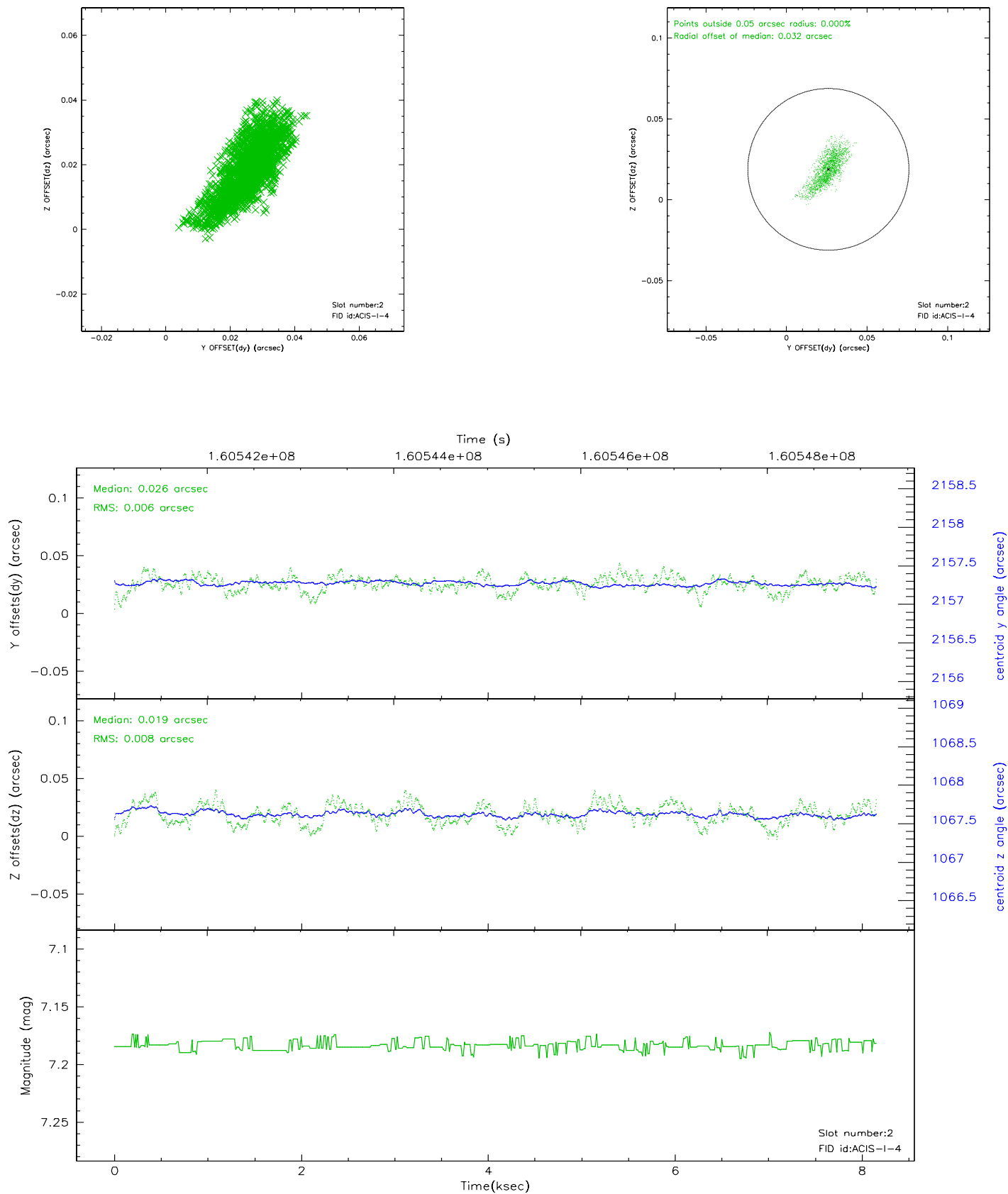
2.5.1 Slot 0



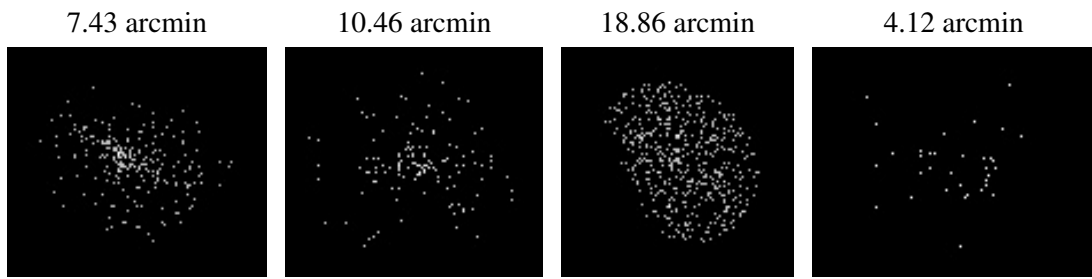
2.5.2 Slot 1



2.5.3 Slot 2



3 Point Sources



A Summary

A.1 Status

V&V Scientist	Beth Sundheim
V&V Date (YYYY-MM-DD)	2006.07.20
V&V Edition	1
V&V Disposition and Status	OK
V&V Charge Time	7.734

A.2 Comments

Window constraint satisfied.