

# V&V Reference Report

## L2 ASCDS Version : 7.6.9

Observation 3487 - L2 Version 001  
Chandra X-Ray Center

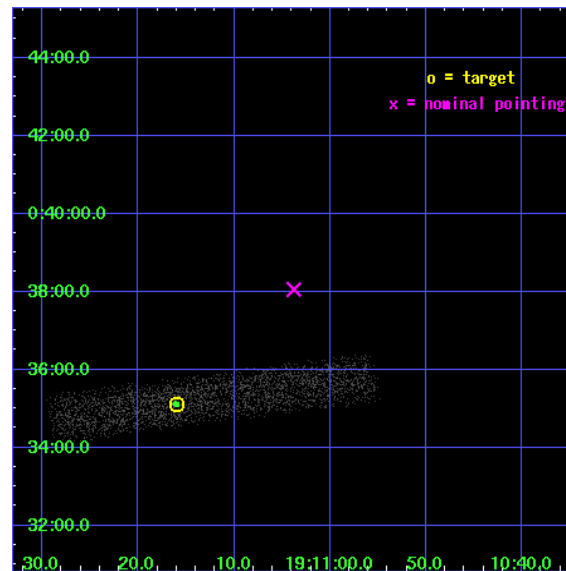
L2 Processing Date : Sep 22 2006

## Contents

<b>1</b>	<b>Front</b>	<b>2</b>
<b>2</b>	<b>OBI</b>	<b>3</b>
2.1	OBI . . . . .	3
2.1.1	Images . . . . .	3
2.1.2	Bias . . . . .	3
2.1.3	Parameters . . . . .	4
2.1.4	Events . . . . .	4
2.2	Compared Parameters . . . . .	5
2.3	Aspect . . . . .	6
2.4	Star Slots . . . . .	9
2.4.1	Slot 3 . . . . .	9
2.4.2	Slot 4 . . . . .	10
2.4.3	Slot 5 . . . . .	11
2.4.4	Slot 6 . . . . .	12
2.4.5	Slot 7 . . . . .	13
2.5	FID Slots . . . . .	14
2.5.1	Slot 0 . . . . .	14
2.5.2	Slot 1 . . . . .	15
2.5.3	Slot 2 . . . . .	16
<b>3</b>	<b>Point Sources</b>	<b>17</b>
<b>A</b>	<b>Summary</b>	<b>18</b>
A.1	Status . . . . .	18
A.2	Comments . . . . .	18

# 1 Front

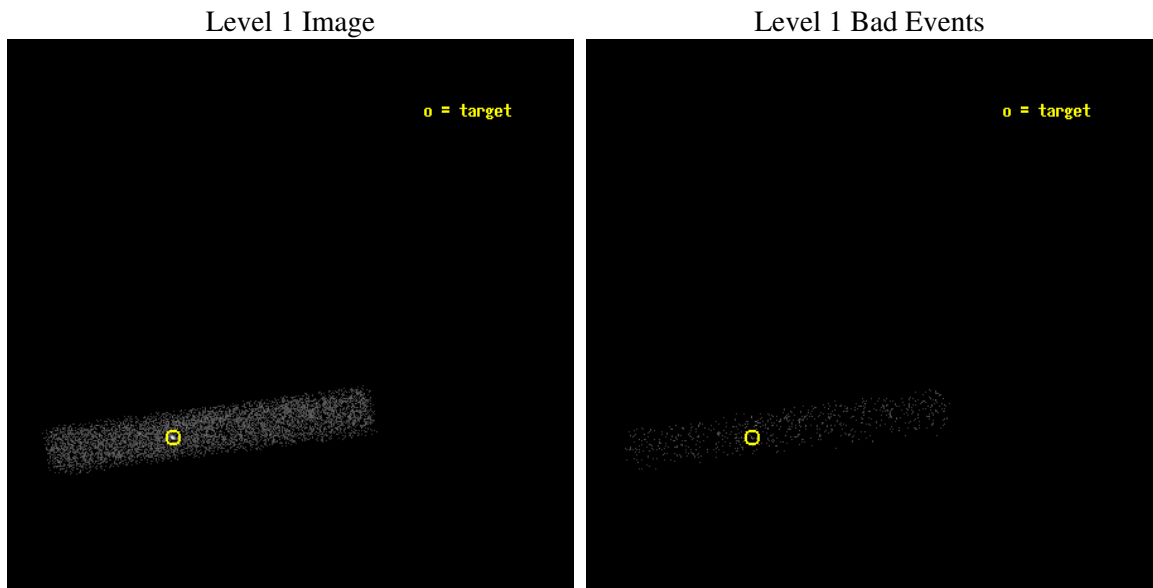
seq_num	400253
obs_id	3487
title	VARIABLE THERMAL EMISSION AND FEATURE FROM AQL X-1 IN QUIESCENCE
observer	Prof. Robert Rutledge
object	AQL X-1
dtcycle	0
cycle	P
ra_targ	287.816667
dec_targ	0.585
ra_nom	287.76577674652
dec_nom	0.63419687441928
roll_nom	172.67260522868
revision	2
ontime	6549.2000975907
livetime	5939.778793389
ontime7	6549.2000975907
l2events	3805



## 2 OBI

### 2.1 OBI

#### 2.1.1 Images



#### 2.1.2 Bias

Chip 7



### 2.1.3 Parameters

obi_num	0
ascdsver	7.6.9
caldbver	3.2.3
date	2006-09-22T16:28:07
revision	2

sched_exp_time	6400.000000
ontime	7367.4989822805
ontime7	7367.4989822805
l1events	8888

### 2.1.4 Events

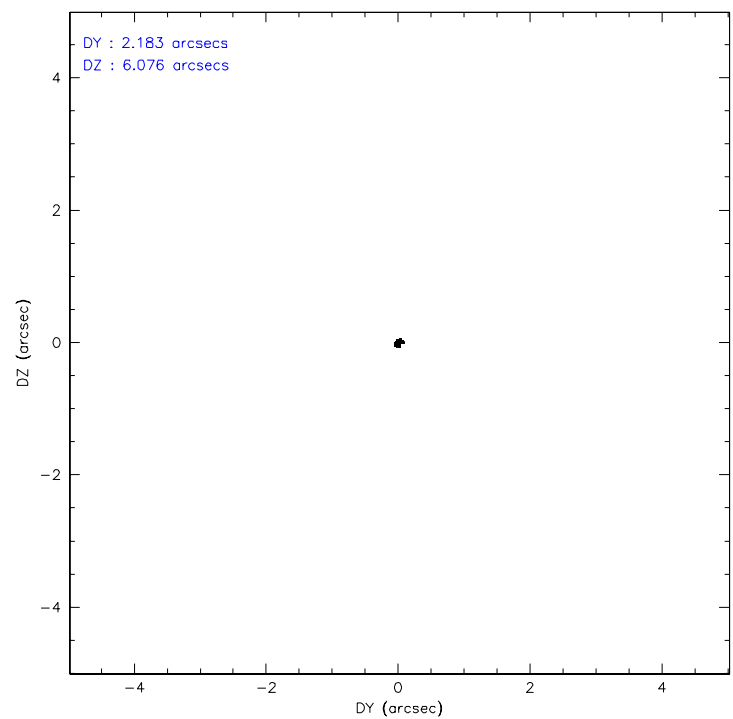
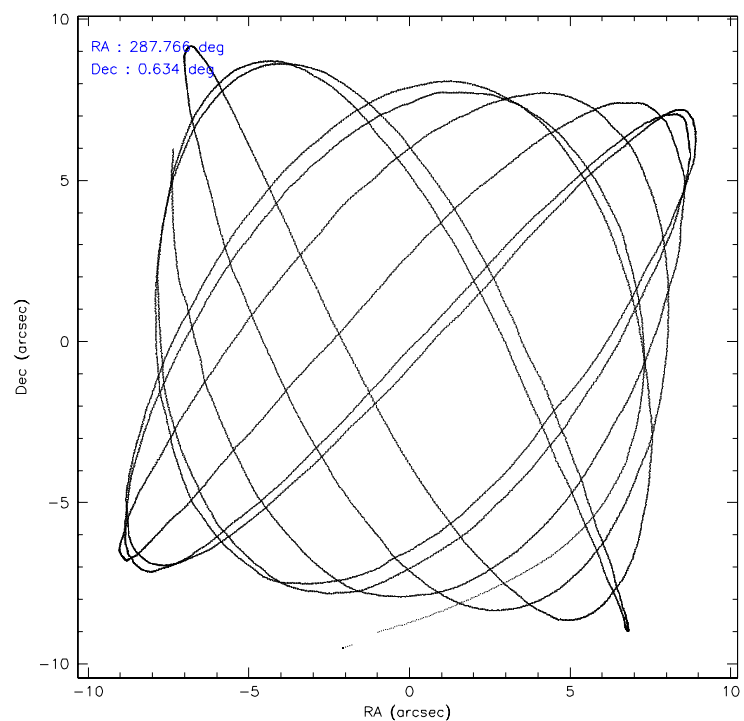
	<b>ccd 7</b>
level 1 events	8888
rejected events	4977
rejected %	55%

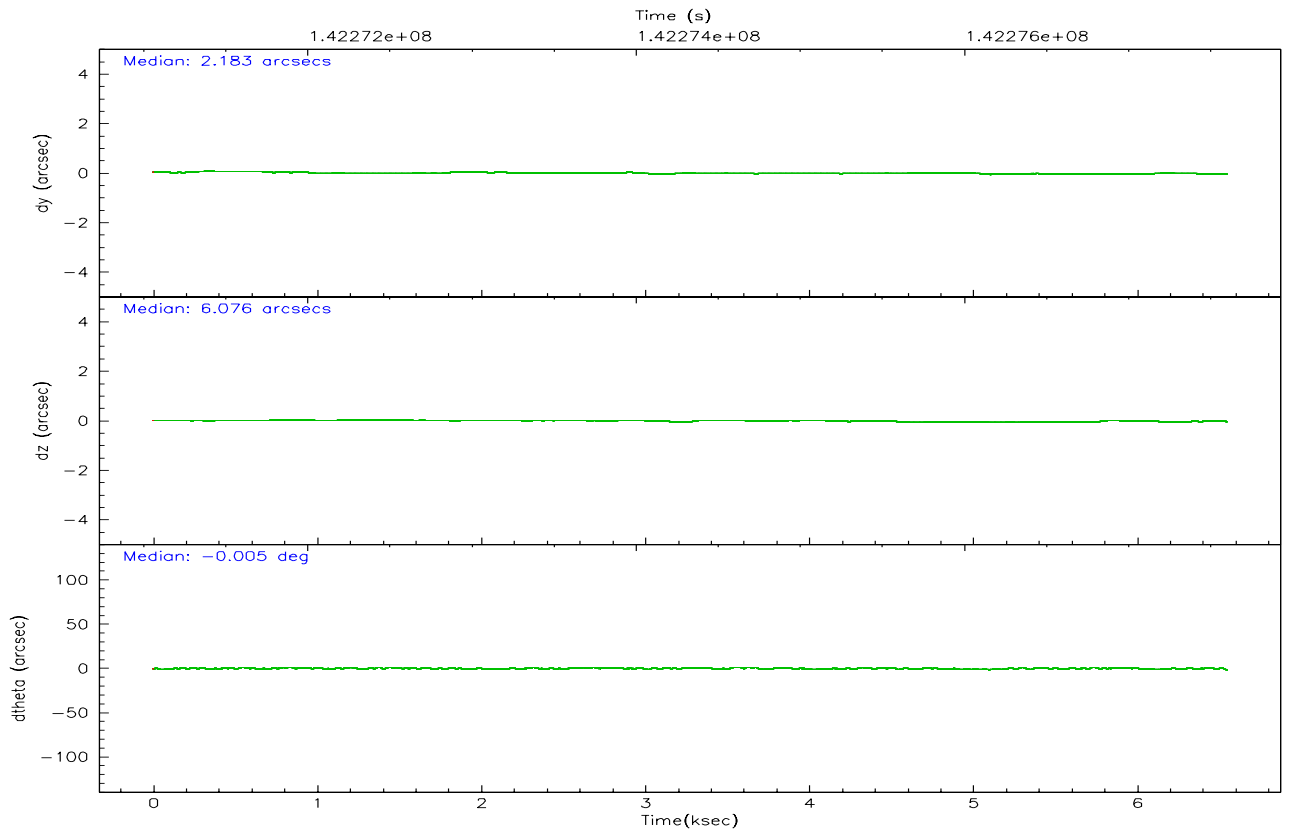
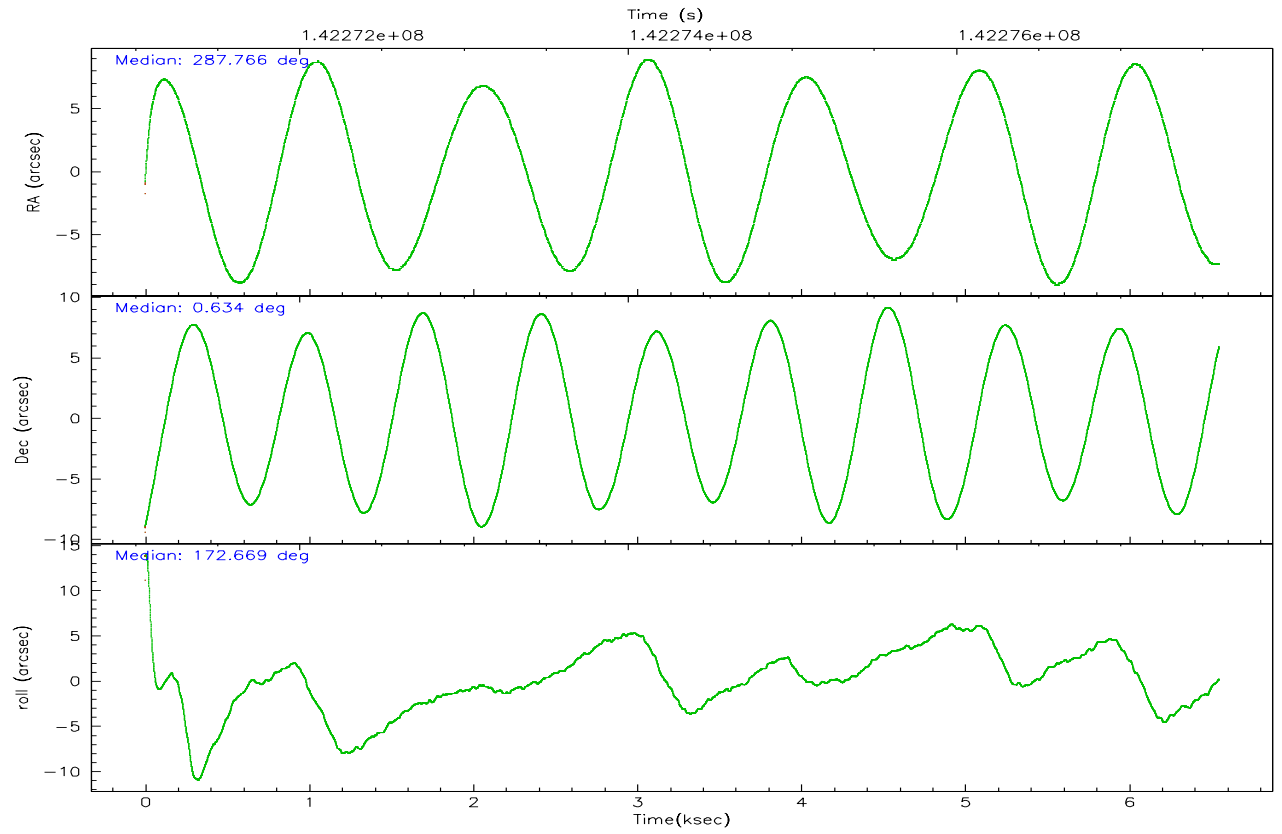
	<b>ccd 7</b>
grade 0 events	506
	5%
grade 1 events	4
	0%
grade 2 events	953
	10%
grade 3 events	522
	5%
grade 4 events	529
	5%
grade 5 events	623
	7%
grade 6 events	1897
	21%
grade 7 events	3854
	43%

## 2.2 Compared Parameters

Parameter	Planned	Actual	Parameter	Planned	Actual
Instrument	ACIS	ACIS	Obspar format version number	6	6
Detector	ACIS-7	ACIS-7	Obspar file type	PREDICTED	ACTUAL
Grating	NONE	NONE	Obspar update status	NONE	UPDATED
Data mode	FAINT	FAINT	Number of optional ACIS chips dropped	0	0
Observation mode	POINTING	POINTING	On-chip summing requested	N	N
Pointing RA	287.790766	287.7657767465158	Subarray requested	CUSTOM	1/8
Pointing Dec	0.645050	0.6341968744192759	Subarray start row	150	150
Pointing Roll	172.515658	172.6726052286833	Subarray row count	128	128
SIM focus pos (mm)	-0.684267	-0.6828225247311905	Alternating exposures requested	N	N
SIM defocus (mm)	0	0.001444936568705701	Primary exposure time	0.000000	0.4
SIM translation stage pos (mm)	-190.132523	-190.1425803651734			
SIM translation stage offset (mm)	0	0.01005778216563158			
Observation start time	142271203.184000	142270188.12543			
Observation start date	2002-07-05T15:45:39	2002-07-05T15:29:48			
Observation end time	142277603.184000	142278304.07576			
Observation end date	2002-07-05T17:32:19	2002-07-05T17:45:04			
Read mode	TIMED	TIMED			

2.3 Aspect





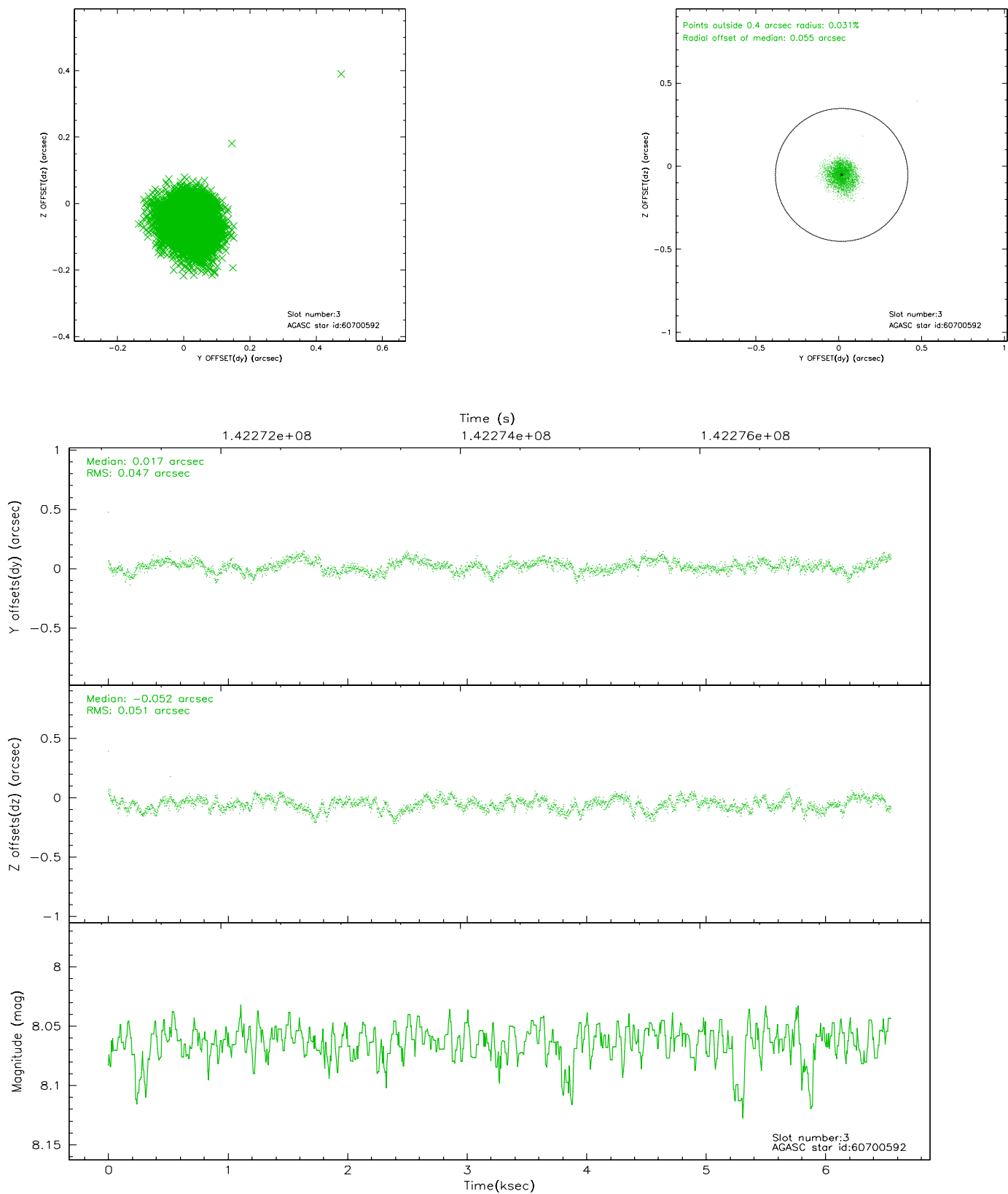
### Slot Statistics

slot	status	id	mag	n_pts	med_dy	med_dz	dr1	dr2	ra	dec	mean_y	mean_z
0	FID	ACIS-S-2	7.12	1598	-0.045	0.016	0.010	0.015	0.000000	0.000000	-754.81	-1727.16
1	FID	ACIS-S-4	7.21	1598	-0.034	0.018	0.006	0.011	0.000000	0.000000	2158.03	180.47
2	FID	ACIS-S-5	7.24	1598	0.049	-0.024	0.008	0.012	0.000000	0.000000	-1806.45	175.02
3	GUIDE	60700592	8.06	3196	0.017	-0.052	0.074	0.116	287.530354	0.932002	1063.88	-901.65
4	GUIDE	60706688	8.71	3193	-0.001	0.033	0.060	0.096	287.637938	0.689635	566.53	-87.22
5	GUIDE	60698176	8.88	3195	-0.055	0.031	0.074	0.122	287.425571	1.234708	1579.85	-1932.64
6	GUIDE	60705928	9.02	3196	0.022	-0.044	0.081	0.134	287.833535	0.715711	-119.15	-272.44
7	GUIDE	60708936	9.11	3194	0.014	0.037	0.075	0.122	287.407925	0.924863	1497.40	-818.80

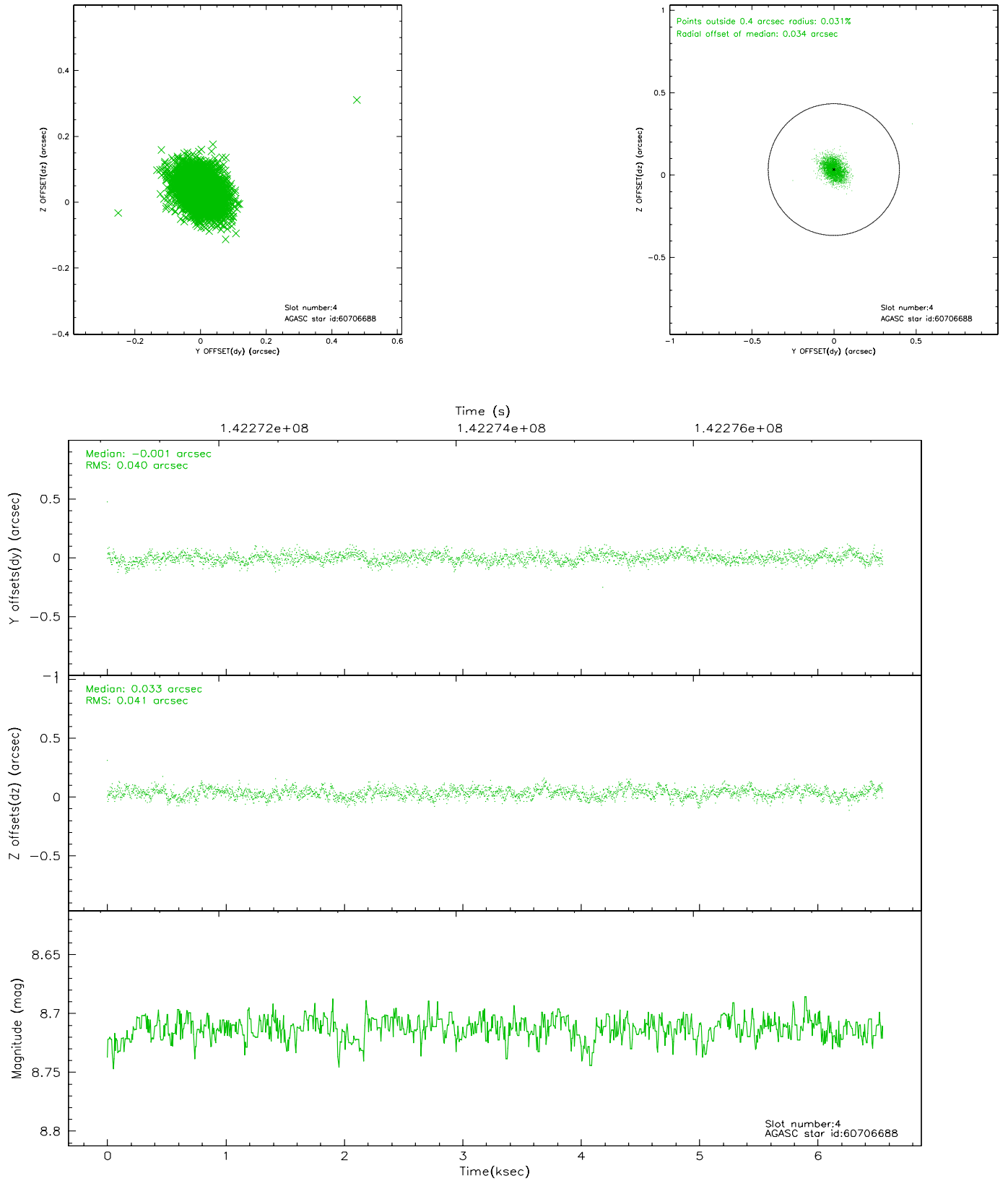


## 2.4 Star Slots

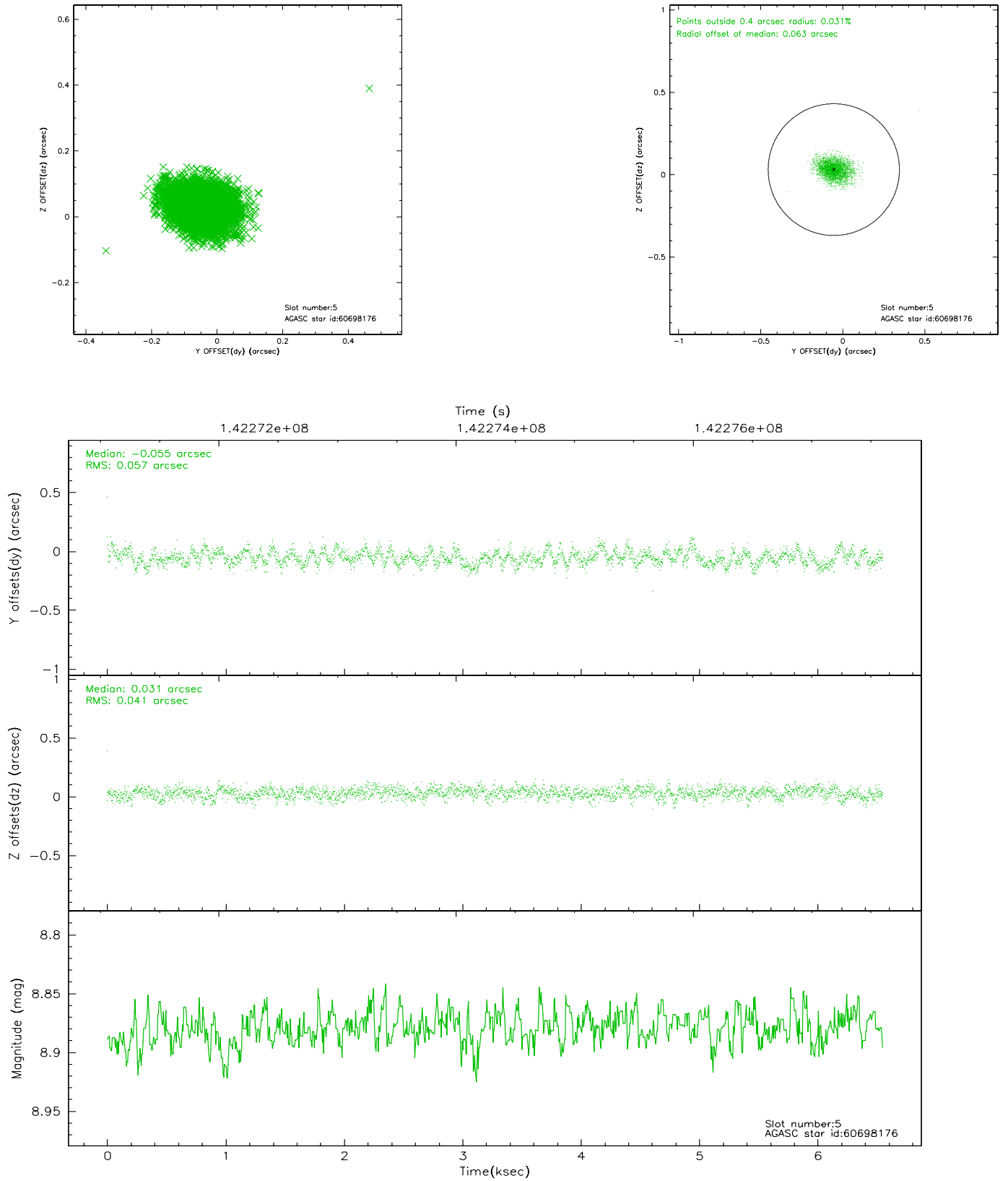
### 2.4.1 Slot 3



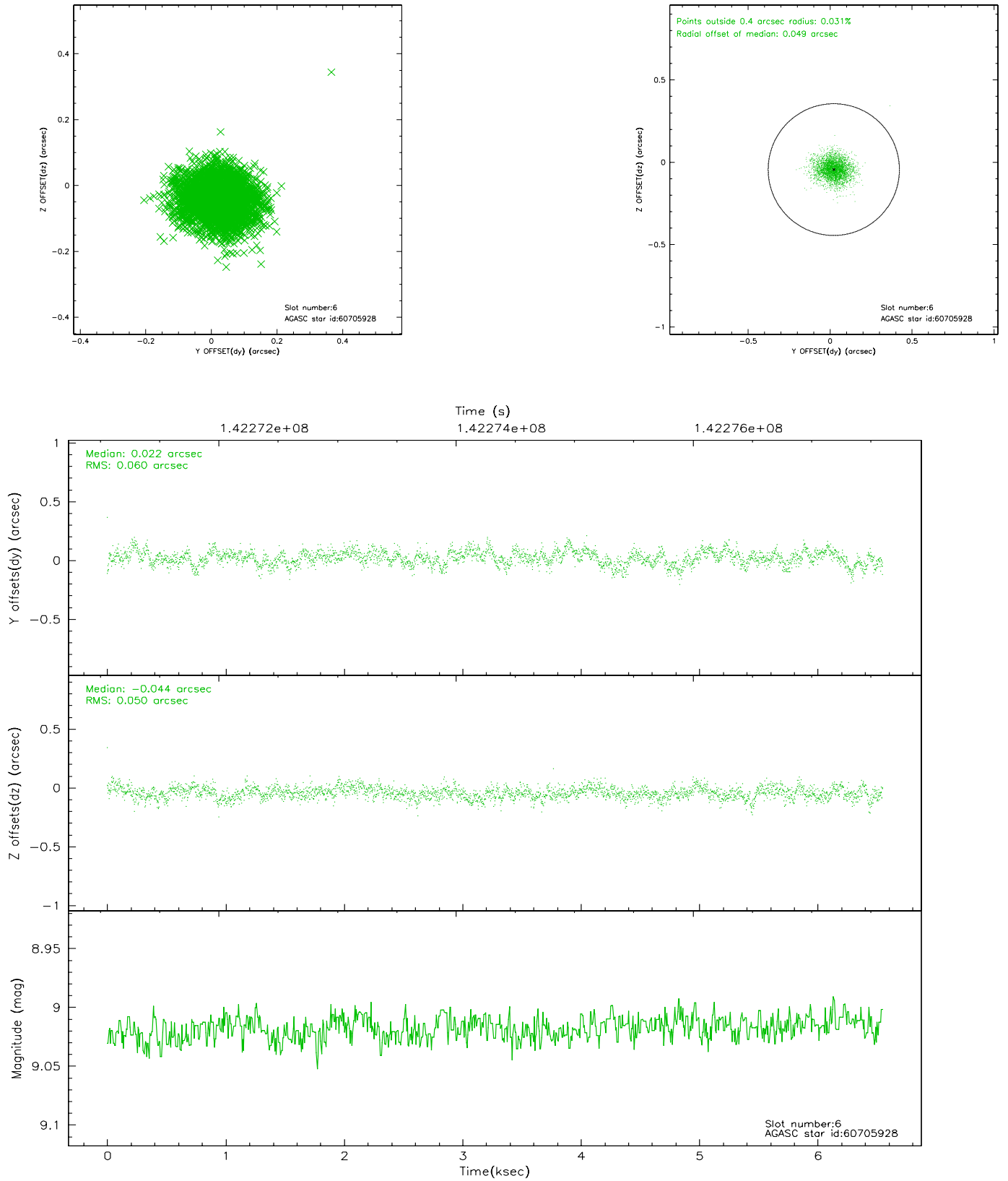
## 2.4.2 Slot 4



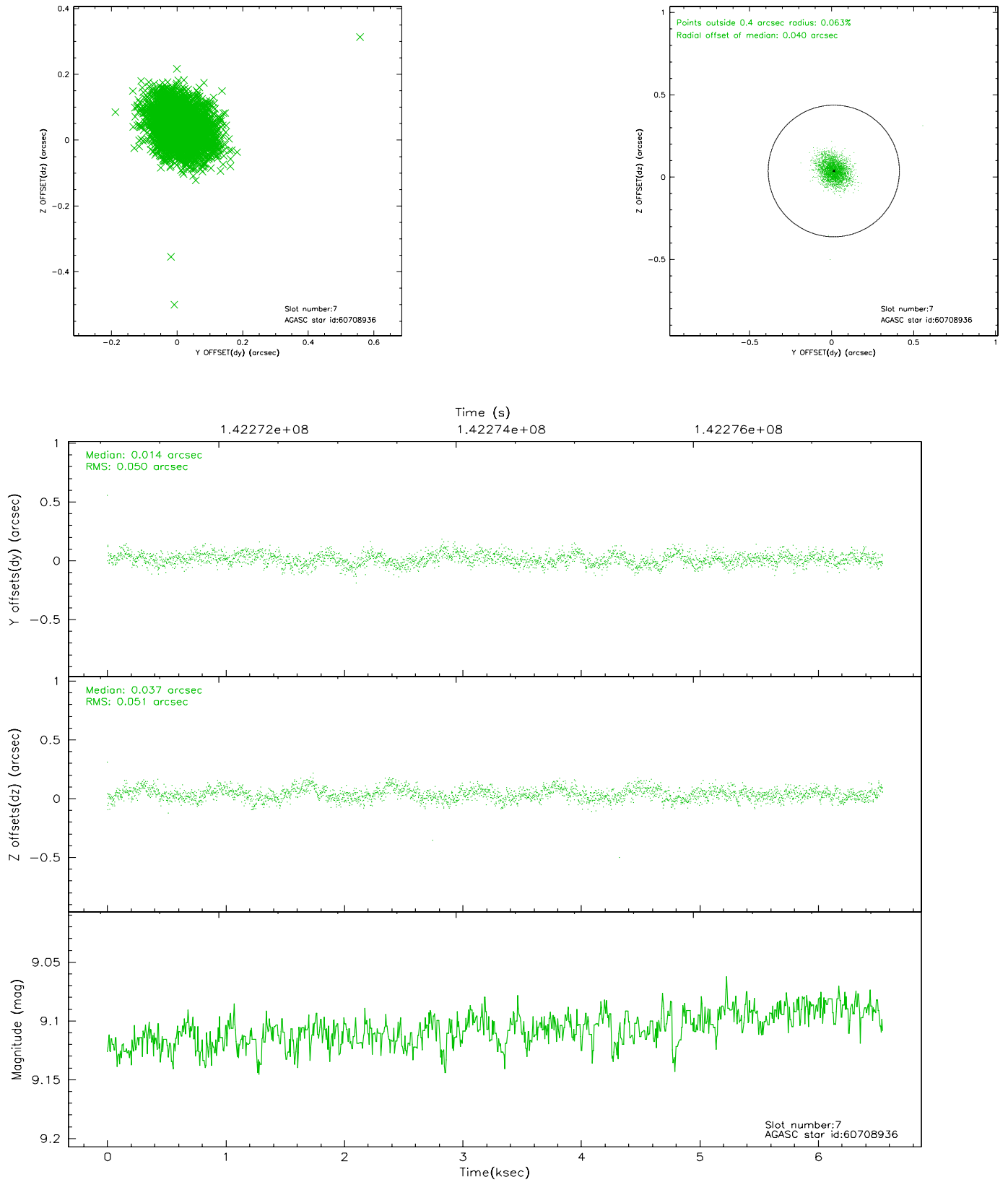
### 2.4.3 Slot 5



## 2.4.4 Slot 6

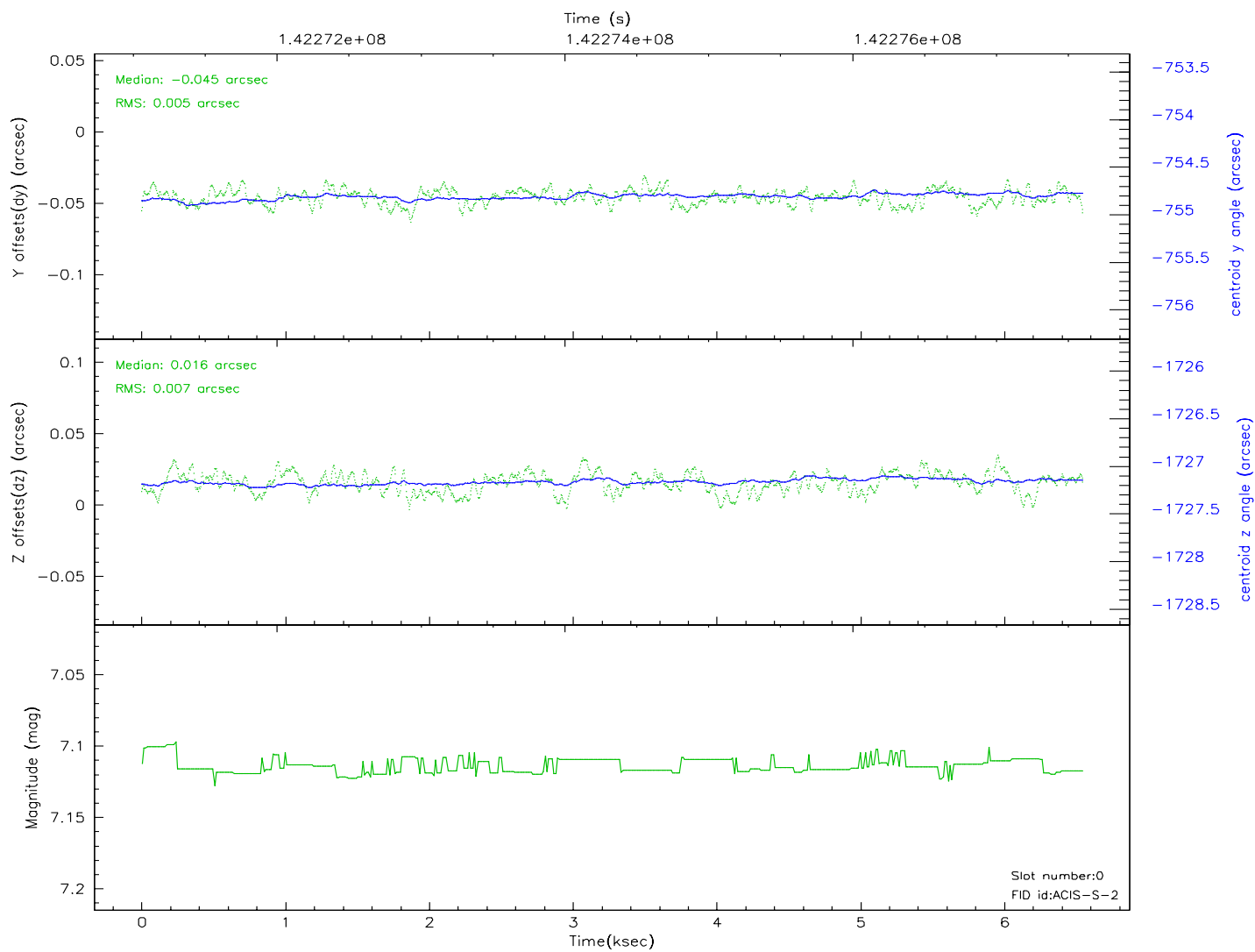
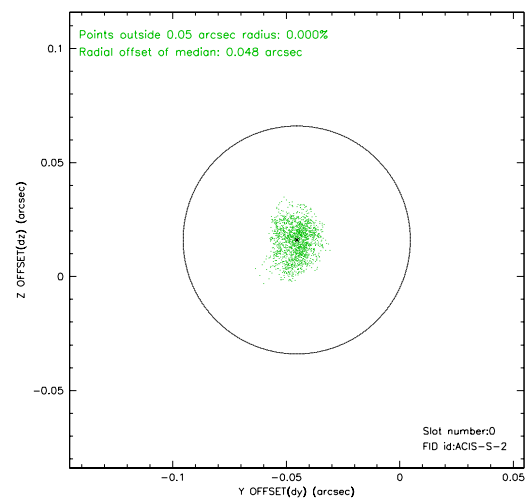
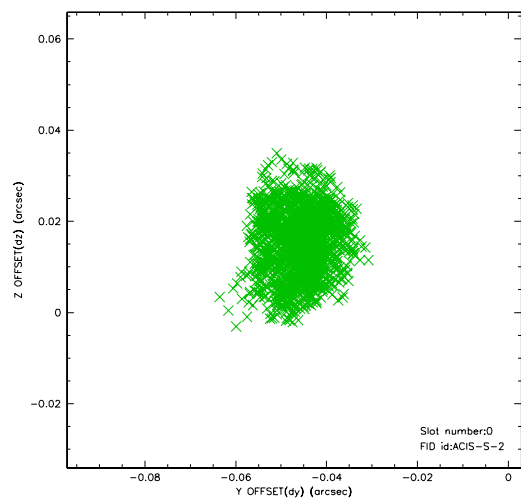


## 2.4.5 Slot 7

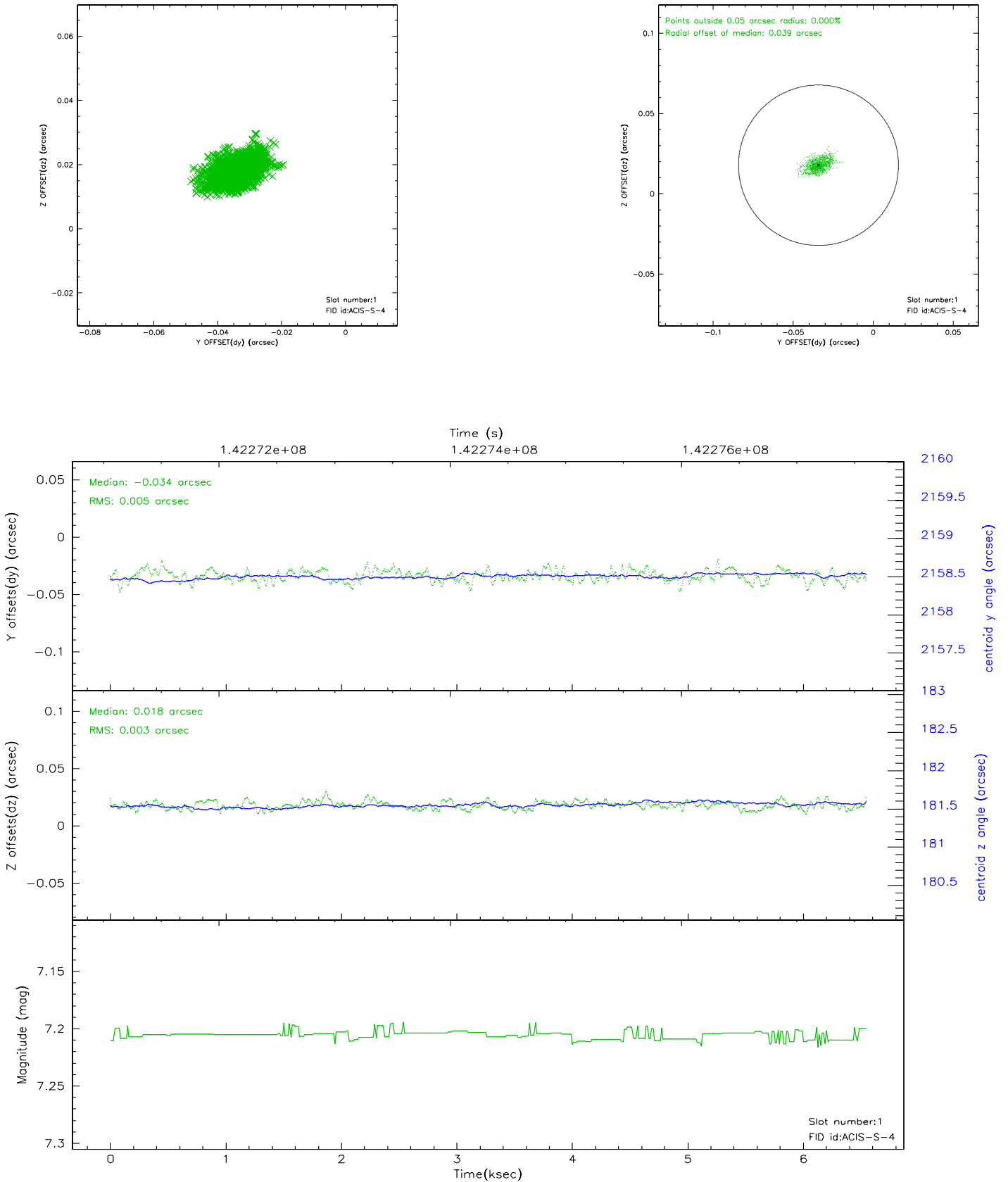


## 2.5 FID Slots

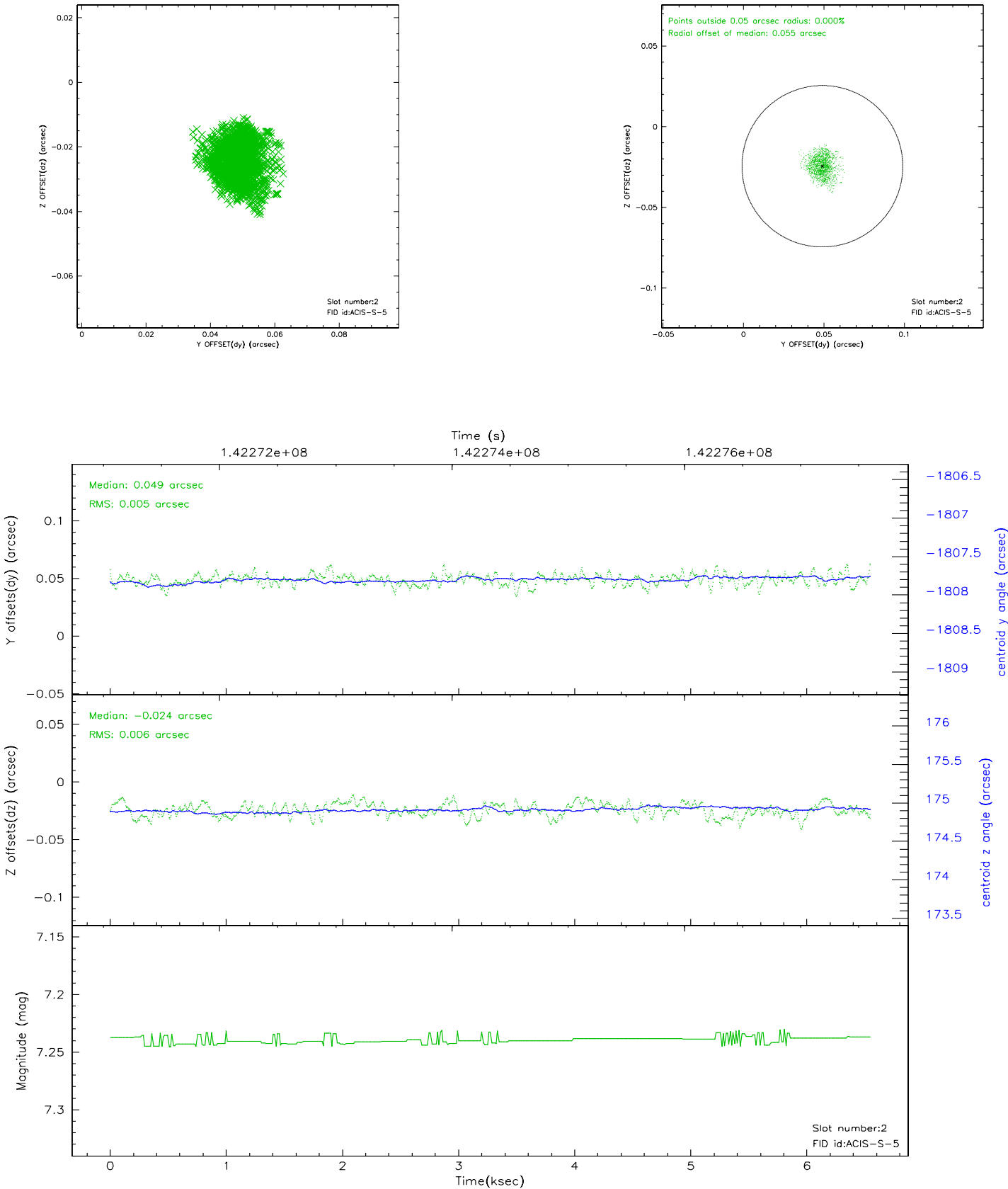
### 2.5.1 Slot 0



## 2.5.2 Slot 1



2.5.3 Slot 2





### 3 Point Sources

# A Summary

## A.1 Status

V&V Scientist	Jen Lauer
V&V Date (YYYY-MM-DD)	2006.09.22
V&V Edition	1
V&V Disposition and Status	OK
V&V Charge Time	6.549

## A.2 Comments

Monitor constraint met.

The chip and source position are away from the aim point; consequently, the source is extended and asymmetric