

# V&V Reference Report

## L2 ASCDS Version : 8.4.5

Observation 3437 - L2 Version 3  
Chandra X-Ray Center

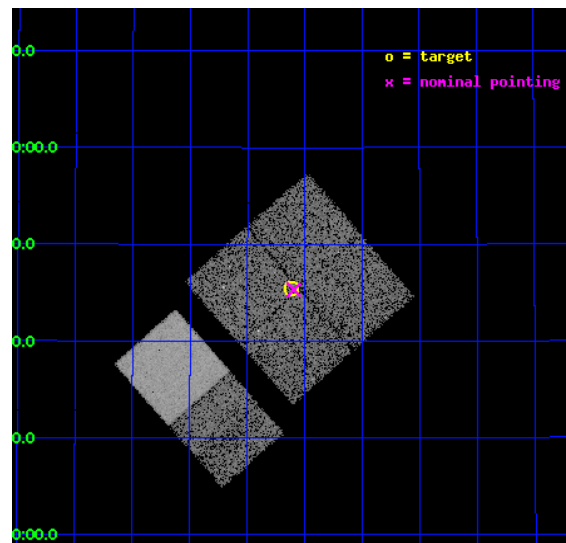
L2 Processing Date : Oct 2 2012

## Contents

<b>1</b>	<b>Front</b>	<b>2</b>
<b>2</b>	<b>OBI</b>	<b>3</b>
2.1	OBI . . . . .	3
2.1.1	Images . . . . .	3
2.1.2	Bias . . . . .	3
2.1.3	Parameters . . . . .	4
2.1.4	Events . . . . .	4
2.2	Compared Parameters . . . . .	5
2.3	Aspect . . . . .	6
2.4	Star Slots . . . . .	9
2.4.1	Slot 3 . . . . .	9
2.4.2	Slot 4 . . . . .	10
2.4.3	Slot 5 . . . . .	11
2.4.4	Slot 6 . . . . .	12
2.4.5	Slot 7 . . . . .	13
2.5	FID Slots . . . . .	14
2.5.1	Slot 0 . . . . .	14
2.5.2	Slot 1 . . . . .	15
2.5.3	Slot 2 . . . . .	16
<b>A</b>	<b>Summary</b>	<b>17</b>
A.1	Status . . . . .	17
A.2	Comments . . . . .	17

# 1 Front

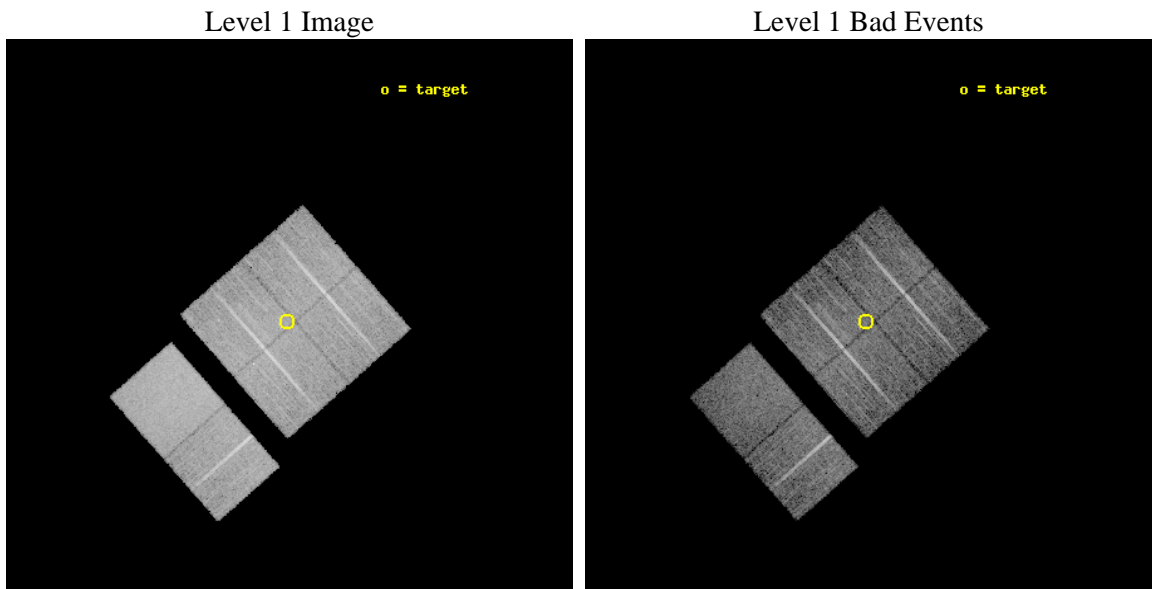
seq_num	500287	Sequence number
obs_id	3437	Observation id
title	CHANDRA IDENTIFICATION OF THE X-RAY COUNTERPART OF GRB020127	Propo
observer	Prof. Derek Fox	Principal investigator
object	GRB020127	Source name
dtcycle	0	&#160
cycle	P	events from which exps? Prim/Second/Both
ra_targ	123.77925	Observer's specified target RA [deg]
dec_targ	36.757139	Observer's specified target Dec [deg]
ra_nom	123.77396027989	Nominal RA [deg]
dec_nom	36.755133339539	Nominal Dec [deg]
roll_nom	228.57903445411	Nominal Roll [deg]
revision	3	Processing version of data
ontime	10060.759049103	Sum of GTIs [s]
livetime	9933.3636601611	Livetime [s]
ontime0	10064.000009358	Sum of GTIs [s]
ontime1	10064.000009358	Sum of GTIs [s]
ontime2	10064.000009358	Sum of GTIs [s]
ontime3	10060.759049103	Sum of GTIs [s]
ontime6	10064.000009358	Sum of GTIs [s]
ontime7	10064.000009358	Sum of GTIs [s]
l2events	69846	Number of level 2 events



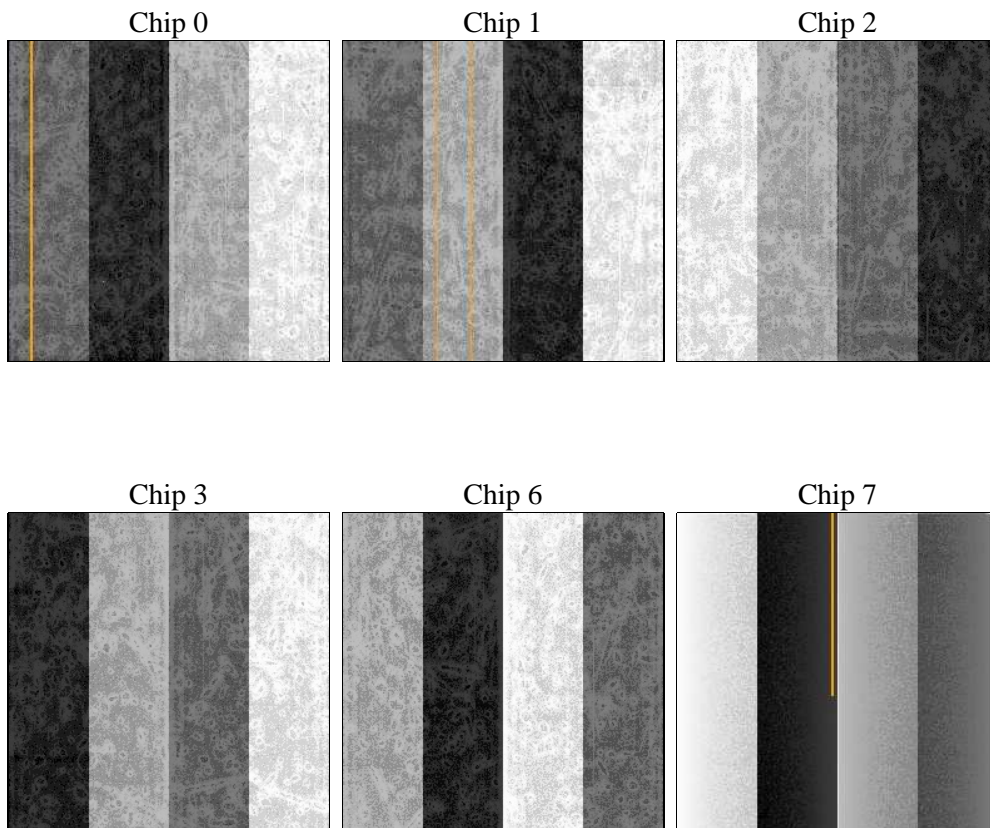
## 2 OBI

### 2.1 OBI

#### 2.1.1 Images



#### 2.1.2 Bias



### 2.1.3 Parameters

obi_num	0	Obi number	sched_exp_time	10000.000000	[s] Scheduled observation exposure time
ascdsver	8.4.5	Processing system revision	ontime	10060.759049103	Sum of GTIs [s]
caldsver	4.5.2	&#160	ontime0	10064.000009358	Sum of GTIs [s]
date	2012-10-02T05:42:43	Date and time of file creation	ontime1	10064.000009358	Sum of GTIs [s]
revision	3	Processing version of data	ontime2	10064.000009358	Sum of GTIs [s]
			ontime3	10060.759049103	Sum of GTIs [s]
			ontime6	10064.000009358	Sum of GTIs [s]
			ontime7	10064.000009358	Sum of GTIs [s]
			l1events	430453	Number of level 1 events

### 2.1.4 Events

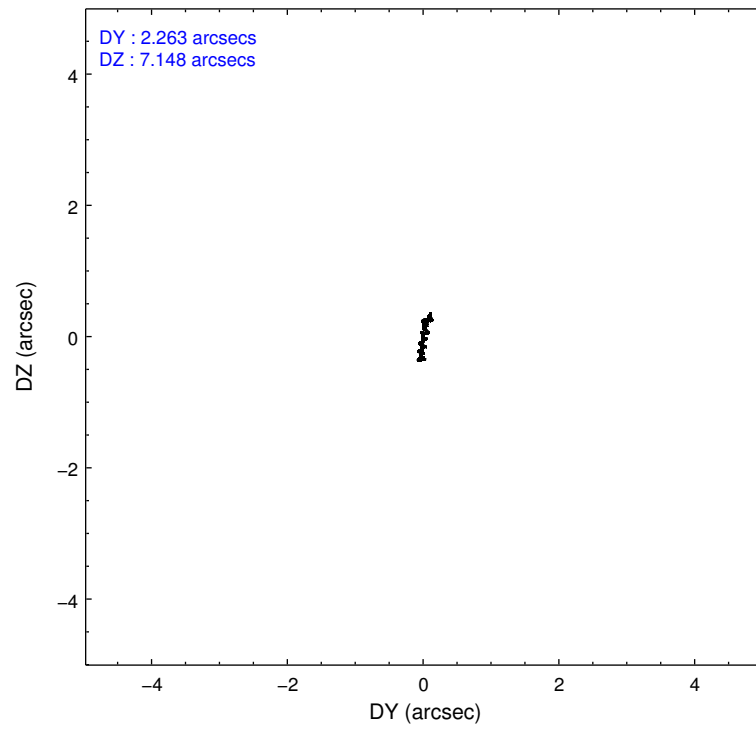
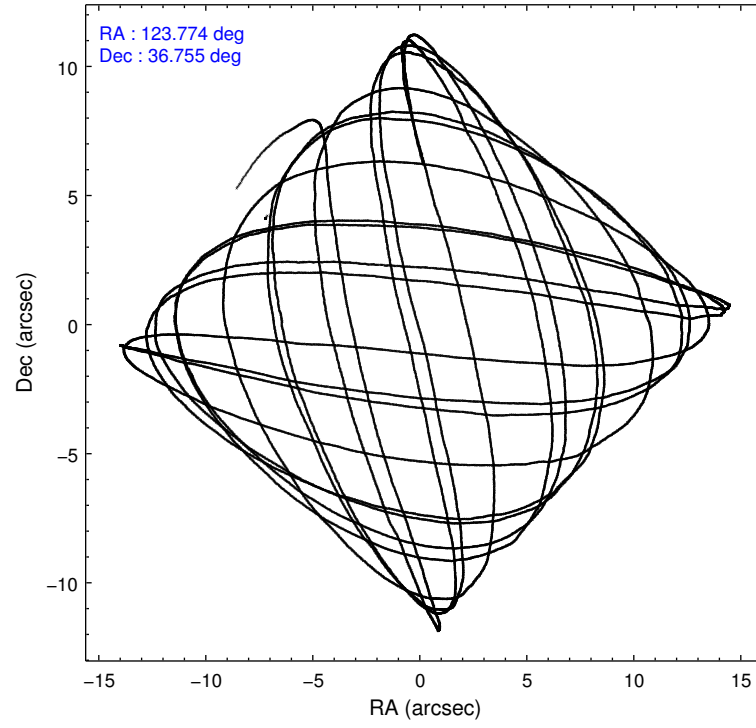
	ccd 0	ccd 1	ccd 2	ccd 3	ccd 6	ccd 7		ccd 0	ccd 1	ccd 2	ccd 3	ccd 6	ccd 7
level 1 events	63073	64629	70580	70309	70610	91252	grade 0 events	3376	3313	3744	3569	3111	3388
rejected events	55177	56395	62445	62446	62970	54594		5%	5%	5%	5%	4%	3%
rejected %	87%	87%	88%	88%	89%	59%	grade 1 events	31	31	29	35	31	83
								0%	0%	0%	0%	0%	0%
							grade 2 events	1834	1761	1792	1635	1604	7328
								2%	2%	2%	2%	2%	8%
							grade 3 events	793	869	766	725	781	3392
								1%	1%	1%	1%	1%	3%
							grade 4 events	776	874	697	769	757	3427
								1%	1%	0%	1%	1%	3%
							grade 5 events	2558	2748	2484	2730	3132	8733
								4%	4%	3%	3%	4%	9%
							grade 6 events	1354	1674	1399	1401	1630	20217
								2%	2%	1%	1%	2%	22%
							grade 7 events	52351	53359	59669	59445	59564	44684
								83%	82%	84%	84%	84%	48%

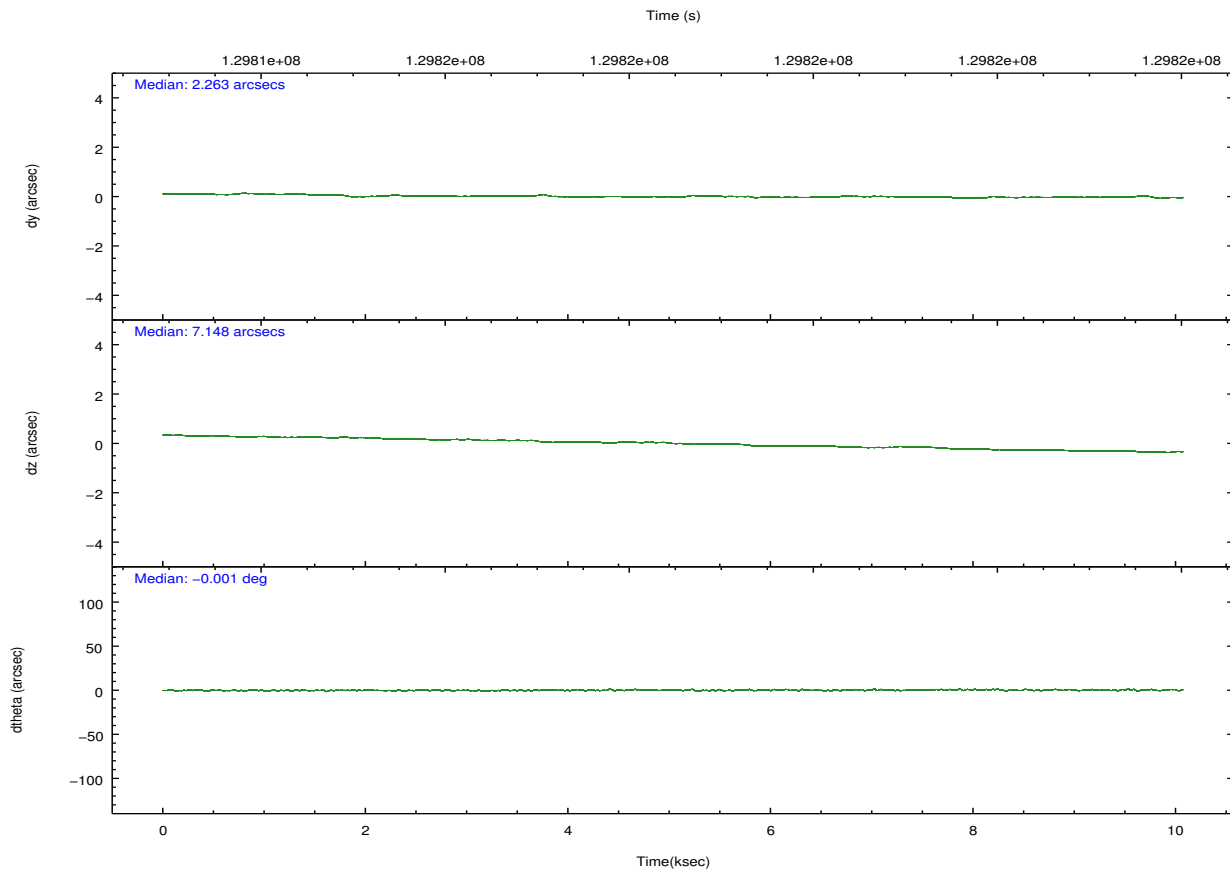
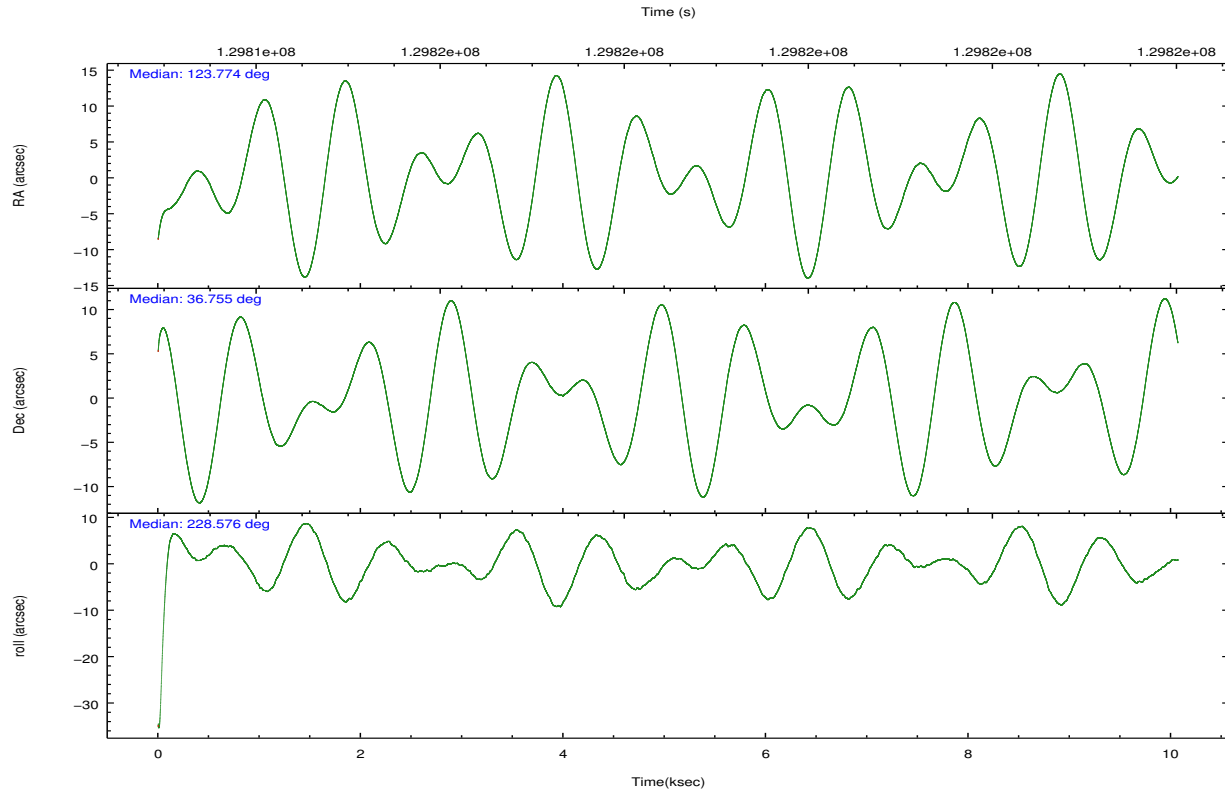


## 2.2 Compared Parameters

Parameter	Planned	Actual	Parameter	Planned	Actual
Instrument	ACIS	ACIS	Obspar format version number	7	7
Detector	ACIS-012367	ACIS-012367	Obspar file type	PREDICTED	ACTUAL
Grating	NONE	NONE	Obspar update status	NONE	UPDATED
Data mode	FAINT	FAINT	Number of optional ACIS chips dropped	0	0
Observation mode	POINTING	POINTING	On-chip summing requested	N	N
[deg] Pointing RA	123.780666	123.7739602798874	Subarray requested	NONE	NONE
[deg] Pointing Dec	36.781994	36.75513333953859	Alternating exposures requested	N	N
[deg] Pointing Roll	228.366381	228.5790344541146	[s] Primary exposure time	0.000000	3.2
[mm] SIM focus pos	-0.782348	-0.7809083437167272			
[mm] SIM defocus	0	0.001439871863259334			
[mm] SIM translation stage pos	-233.592463	-233.5874344608287			
[mm] SIM translation stage offset	0	-0.005018542100998502			
[s] Observation start time (MET)	129813514.184000	129812391.94356			
Observation start date	2002-02-11T11:17:30	2002-02-11T10:59:51			
[s] Observation end time (MET)	129823514.184000	129824444.91905			
Observation end date	2002-02-11T14:04:10	2002-02-11T14:20:44			
Read mode	TIMED	TIMED			

## 2.3 Aspect



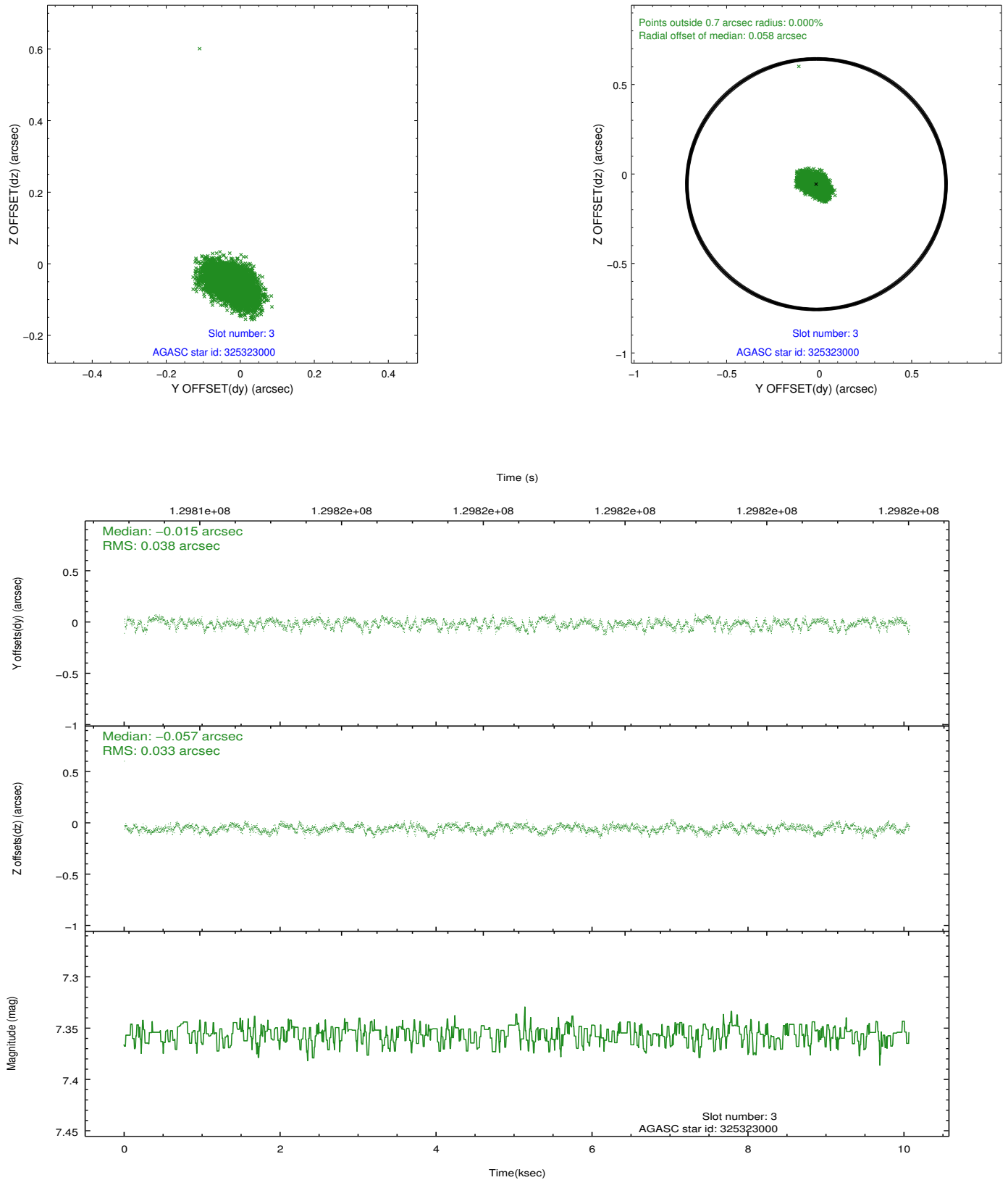


### Slot Statistics

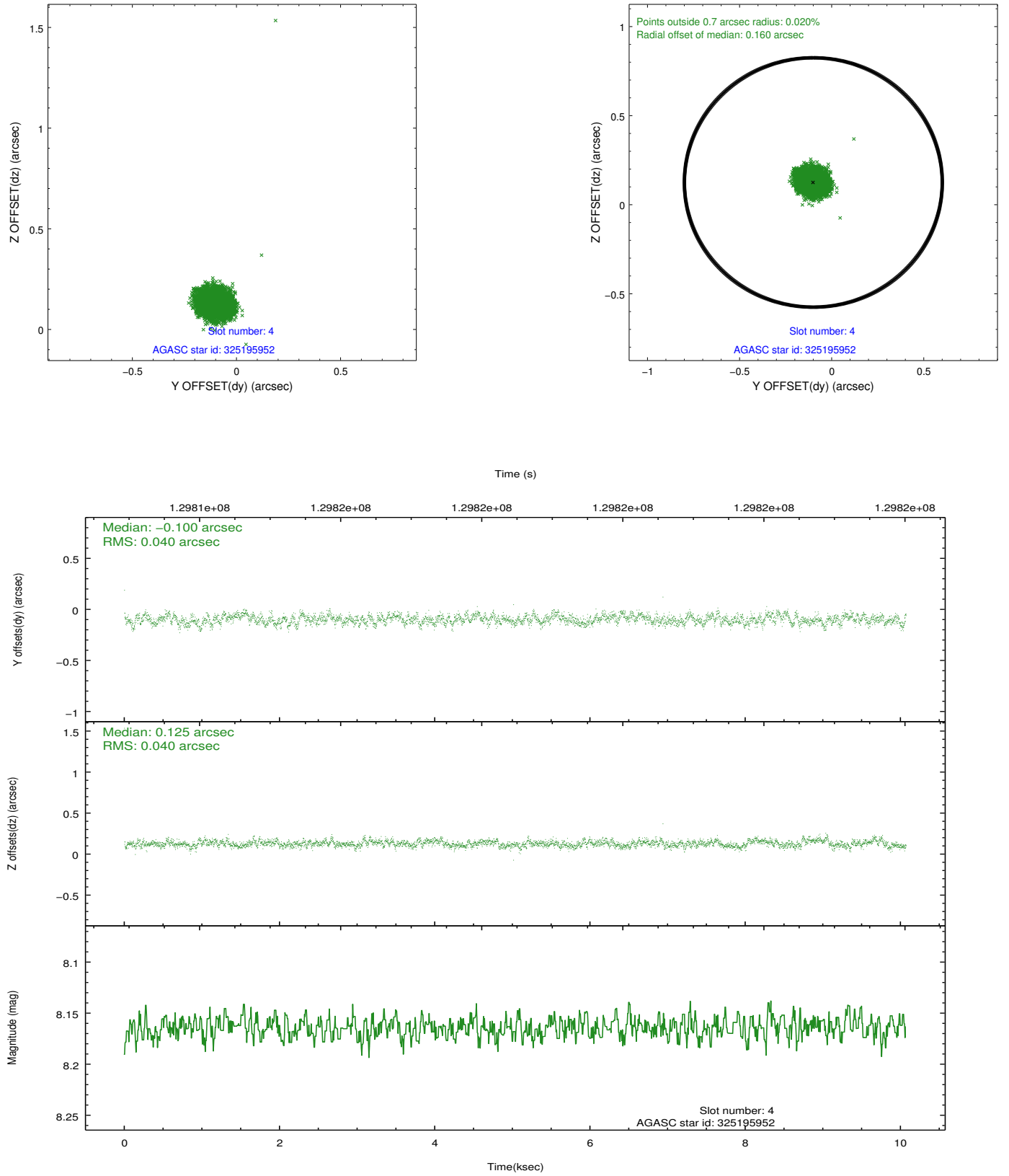
slot	status	id	mag	n_pts	med_dy	med_dz	dr1	dr2	ra	dec	mean_y	mean_z
0	FID	ACIS-I-1	7.25	2457	-0.015	0.033	0.009	0.015	0.000000	0.000000	937.51	-830.52
1	FID	ACIS-I-5	7.23	2456	-0.026	0.046	0.006	0.010	0.000000	0.000000	-1810.28	1066.77
2	FID	ACIS-I-6	7.26	2457	-0.050	-0.009	0.009	0.015	0.000000	0.000000	402.50	1711.78
3	GUIDE	325323000	7.36	4913	-0.015	-0.057	0.053	0.086	124.596770	37.056165	-2304.42	1089.88
4	GUIDE	325195952	8.16	4913	-0.100	0.125	0.056	0.090	122.905025	36.510458	2403.25	-1251.49
5	GUIDE	325191760	8.68	4911	-0.007	-0.085	0.071	0.111	123.364211	37.191725	-311.81	-1874.67
6	GUIDE	325330440	8.67	4910	-0.036	-0.011	0.065	0.102	124.000460	37.423677	-2146.11	-1066.08
7	GUIDE	325332208	8.81	4911	0.163	0.028	0.074	0.117	123.952555	35.939297	1932.42	2389.64

## 2.4 Star Slots

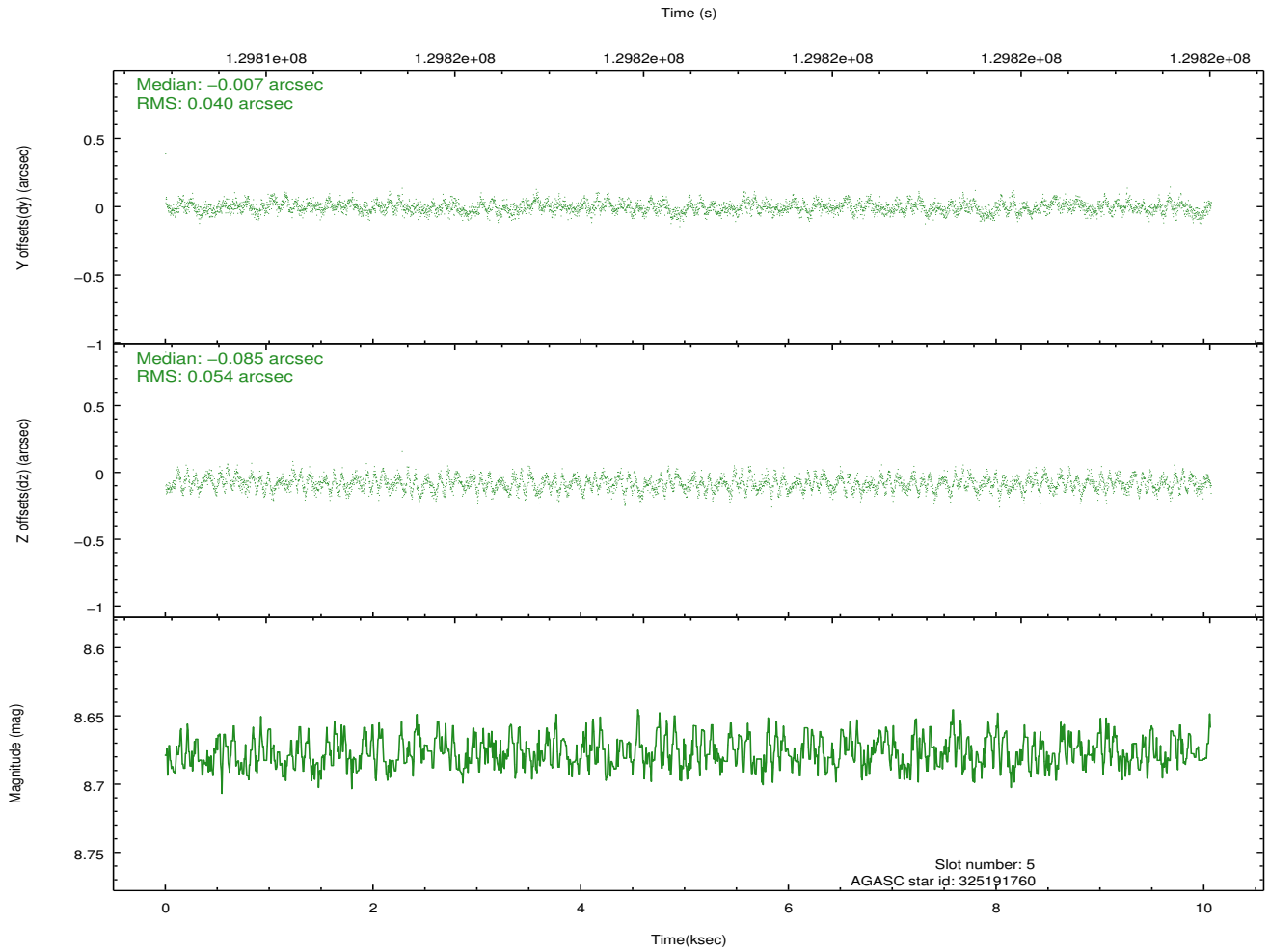
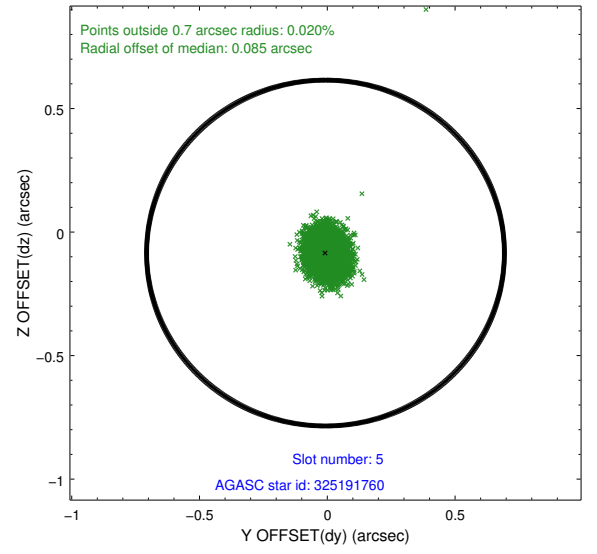
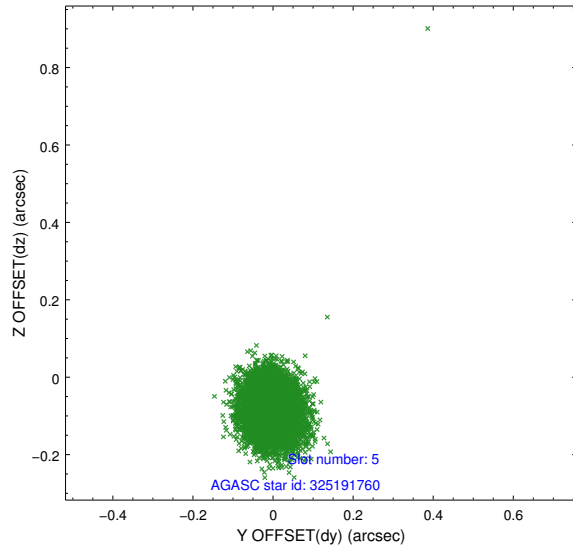
### 2.4.1 Slot 3



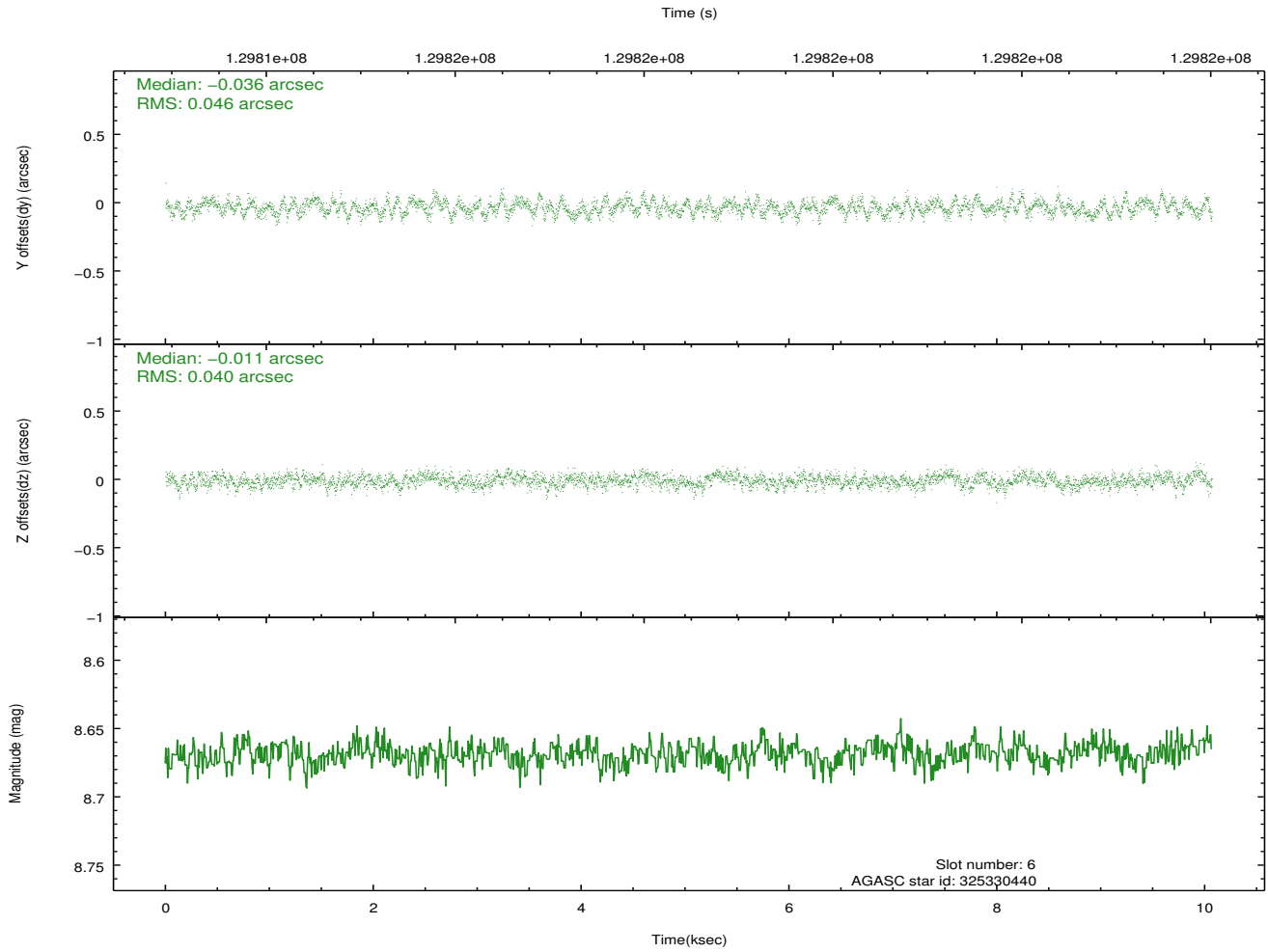
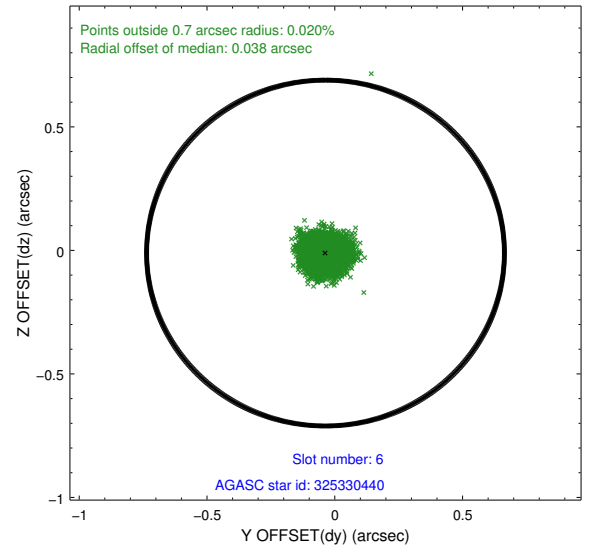
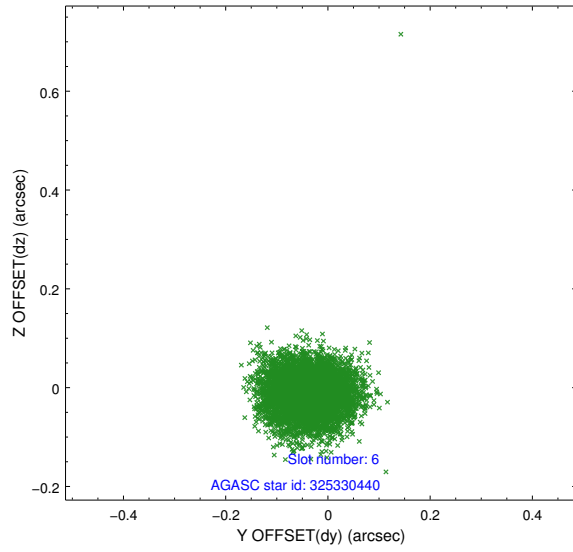
## 2.4.2 Slot 4



### 2.4.3 Slot 5

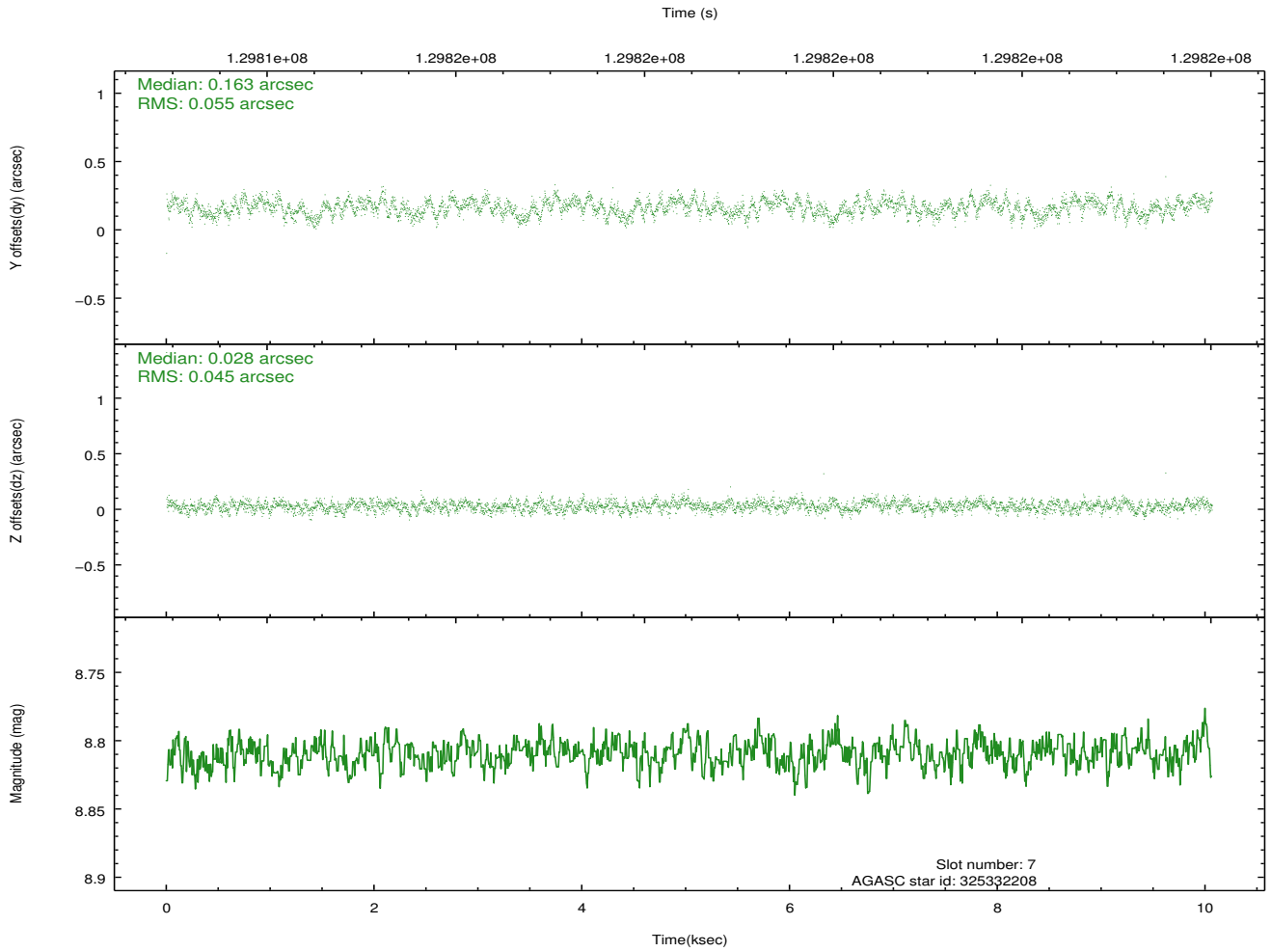
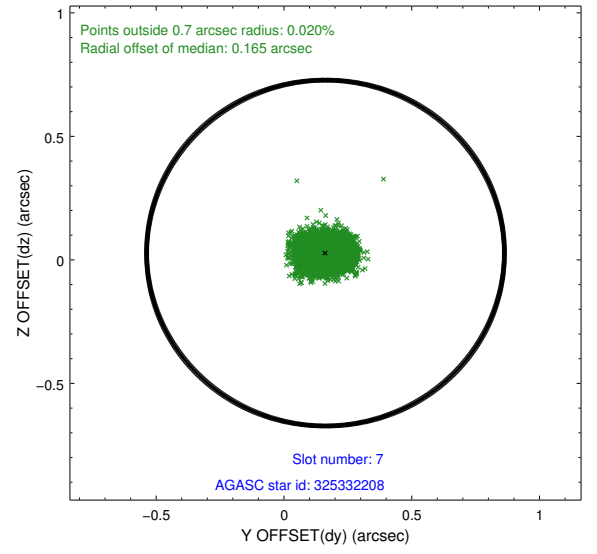
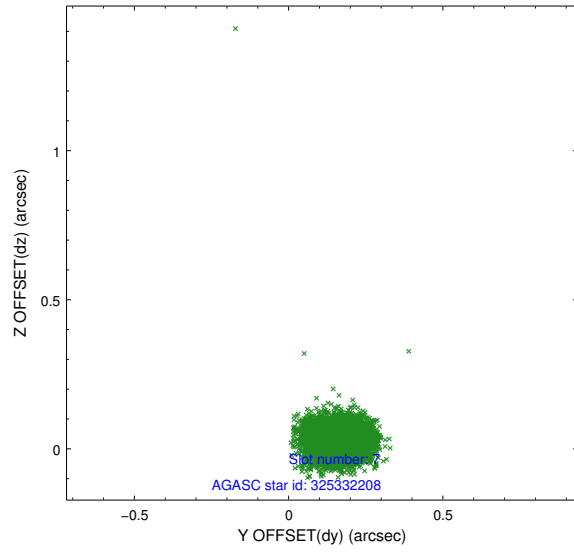


## 2.4.4 Slot 6

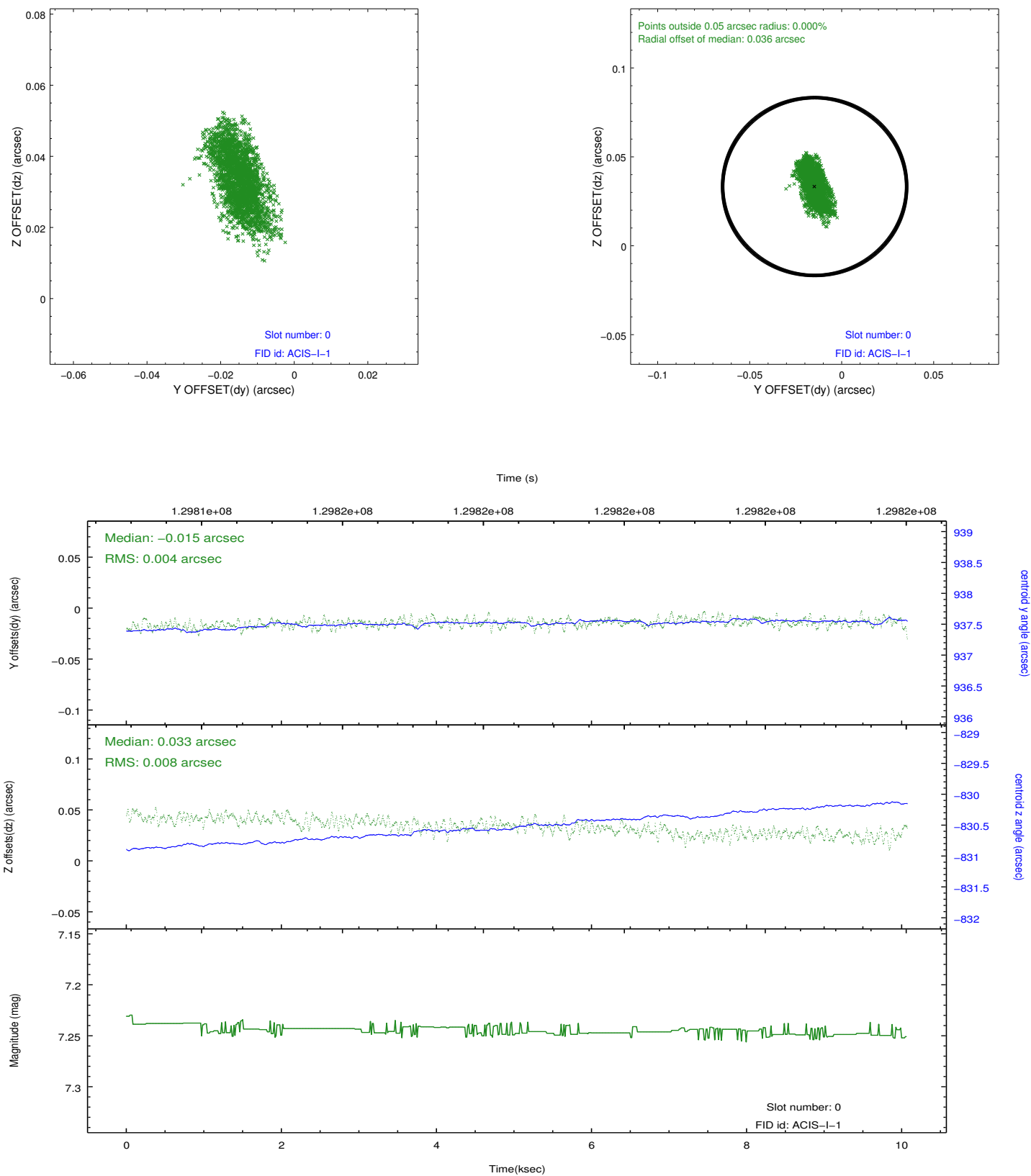




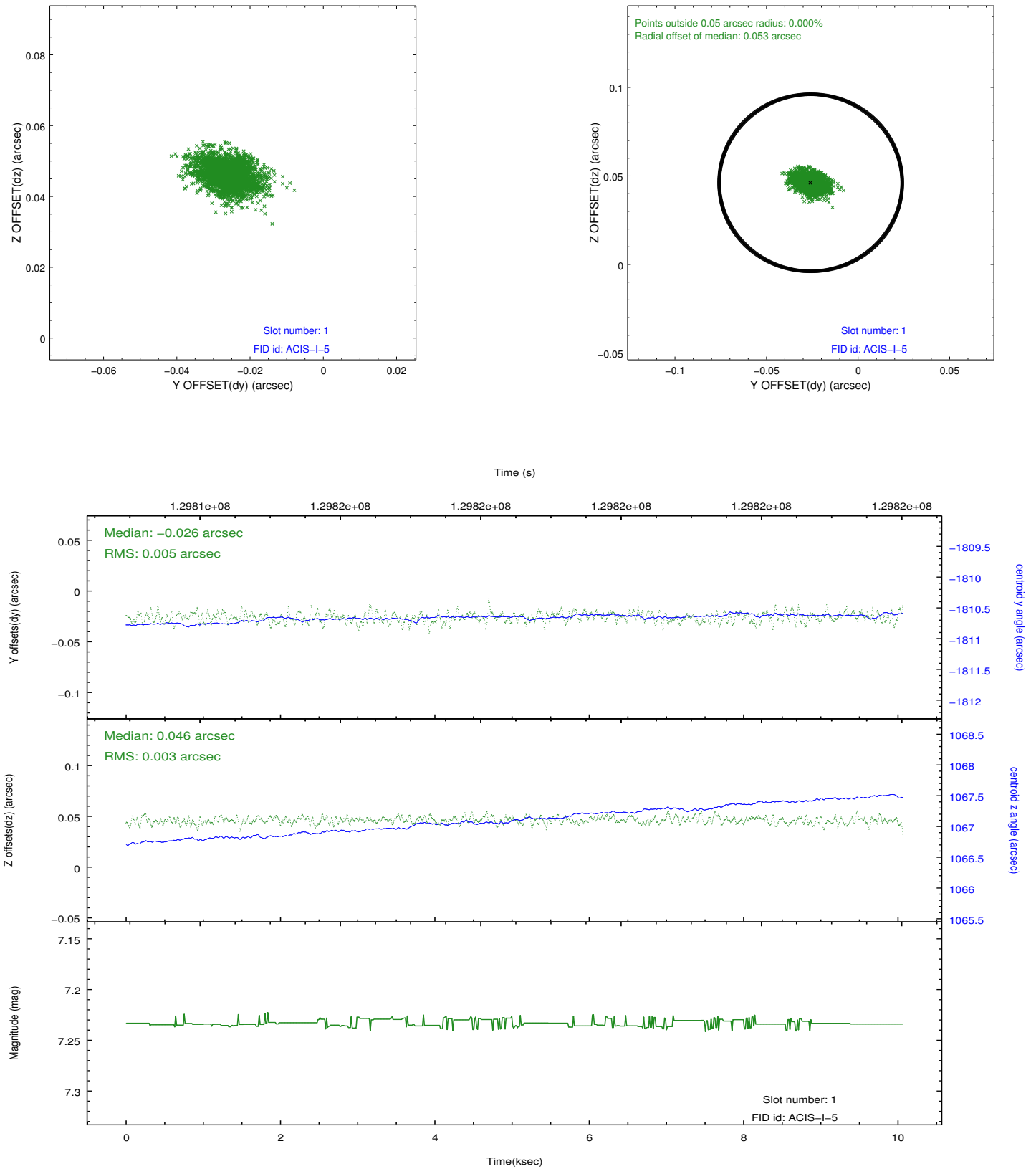
## 2.4.5 Slot 7



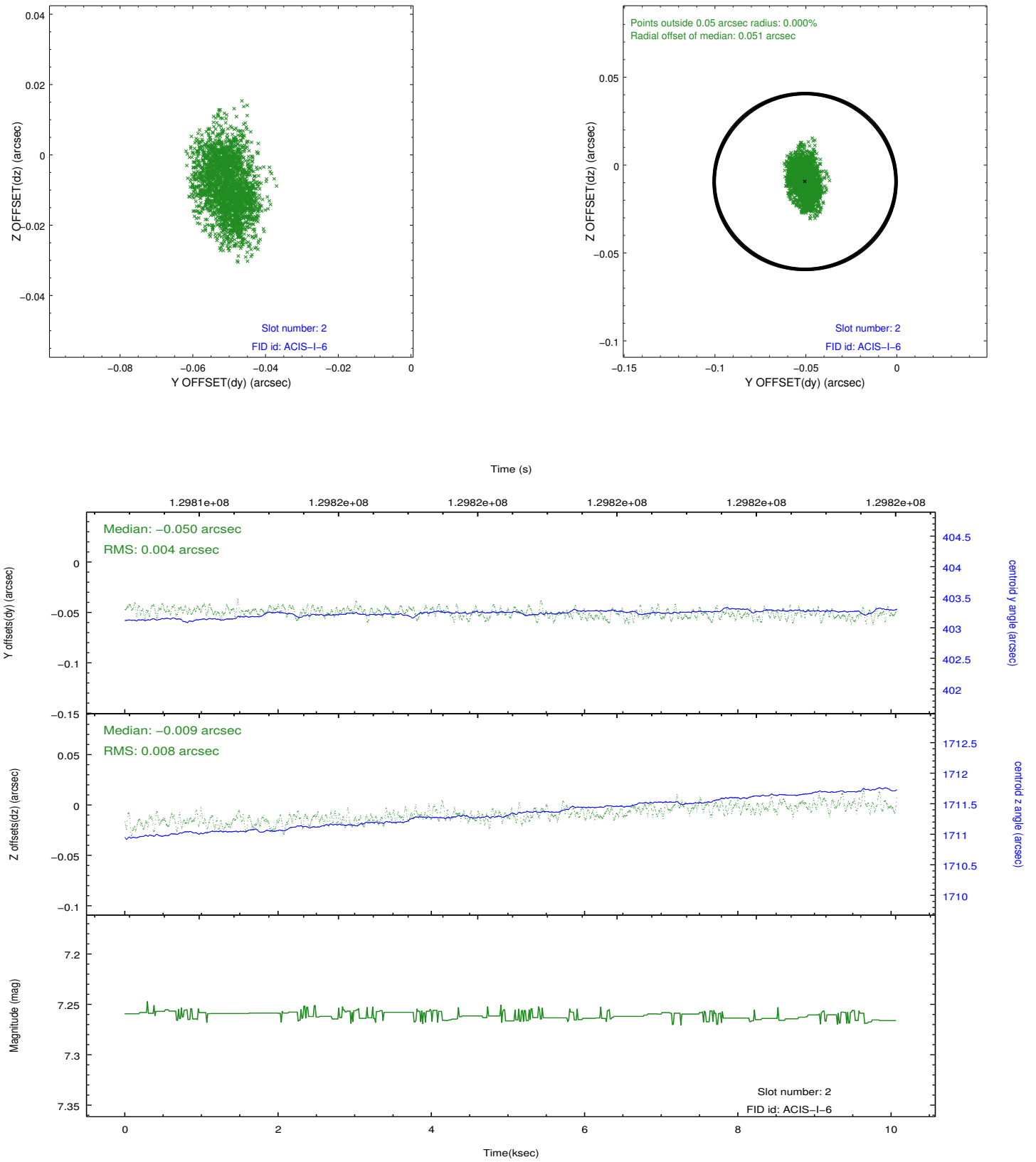
### 2.5.1 Slot 0



## 2.5.2 Slot 1



### 2.5.3 Slot 2



## A Summary

### A.1 Status

V&V Scientist	Beth Sundheim
V&V Date (YYYY-MM-DD)	2012.10.03
V&V Edition	1
V&V Disposition and Status	OK
V&V Charge Time	10.064

### A.2 Comments