

V&V Reference Report

L2 ASCDS Version : 7.6.9

Observation 3337 - L2 Version 001
Chandra X-Ray Center

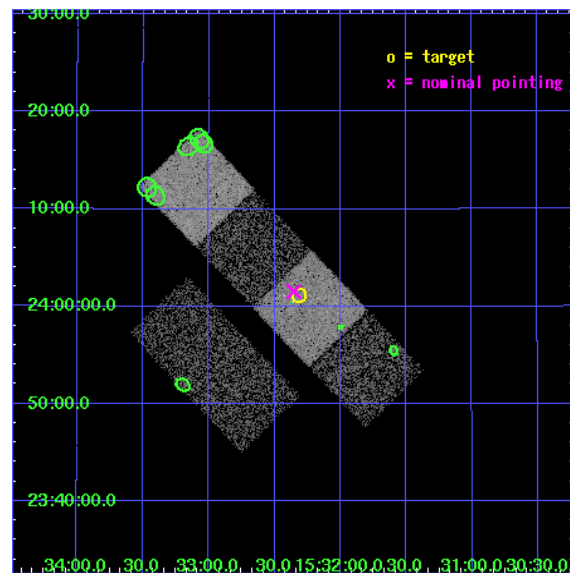
L2 Processing Date : Oct 16 2006

Contents

1	Front	2
2	OBI	3
2.1	OBI	3
2.1.1	Images	3
2.1.2	Bias	3
2.1.3	Parameters	4
2.1.4	Events	4
2.2	Compared Parameters	5
2.3	Aspect	6
2.4	Star Slots	9
2.4.1	Slot 3	9
2.4.2	Slot 4	10
2.4.3	Slot 5	11
2.4.4	Slot 6	12
2.4.5	Slot 7	13
2.5	FID Slots	14
2.5.1	Slot 0	14
2.5.2	Slot 1	15
2.5.3	Slot 2	16
3	Point Sources	17
A	Summary	18
A.1	Status	18
A.2	Comments	18

1 Front

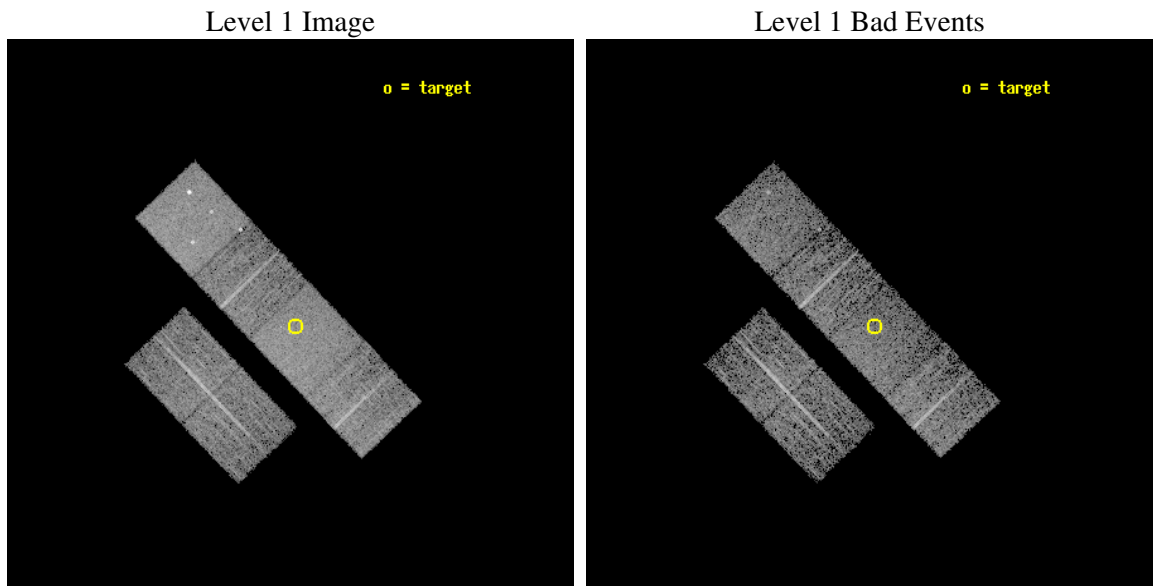
seq_num	900176
obs_id	3337
title	THE SHEEP SURVEY: WHAT KIND OF OBJECTS MAKE THE X-RAY BACKGROUND?
observer	Professor Kirpal Nandra
object	AX J1532.3+2401
dtcycle	0
cycle	P
ra_targ	233.079583
dec_targ	24.020278
ra_nom	233.08819174786
dec_nom	24.025964152777
roll_nom	46.317307474787
revision	2
ontime	4959.9999815226
livetime	4897.1934752031
ontime2	4959.9999815226
ontime3	4959.9999815226
ontime5	4959.9999815226
ontime6	4959.9999815226
ontime7	4959.9999815226
ontime8	4959.9999815226
l2events	48946



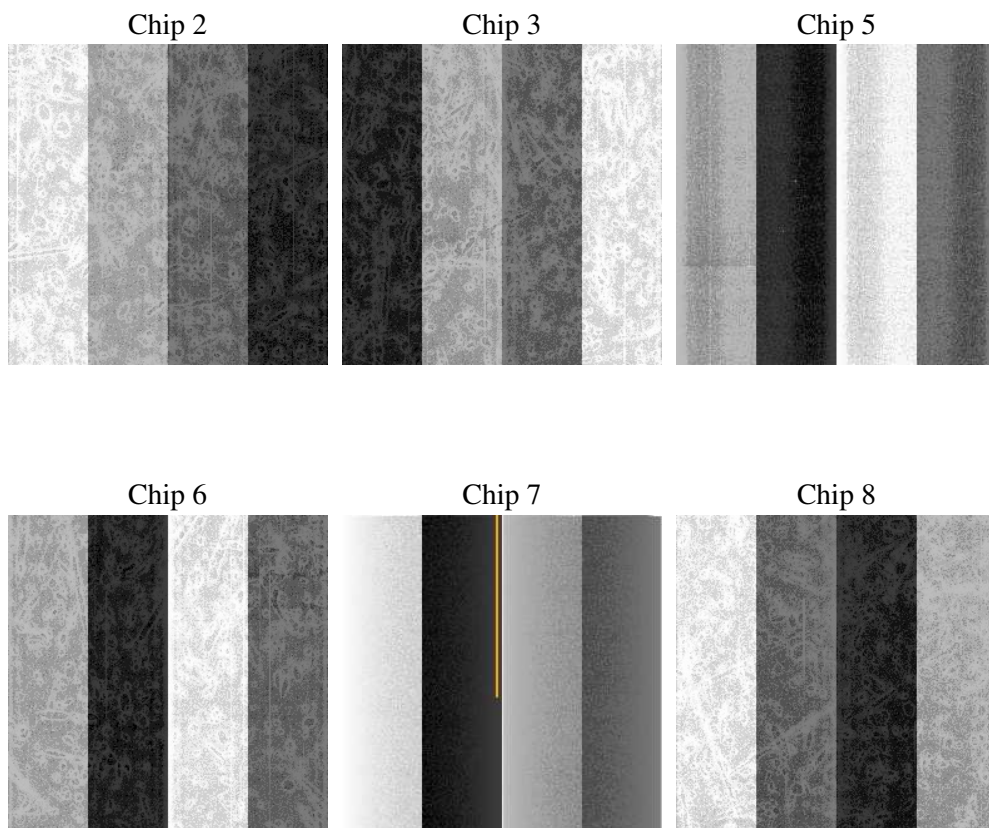
2 OBI

2.1 OBI

2.1.1 Images



2.1.2 Bias



2.1.3 Parameters

obi_num	1
ascdsver	7.6.9
caldsver	3.2.3
date	2006-10-16T04:28:44
revision	2

sched_exp_time	5000.000000
ontime	4965.2114076316
ontime2	4965.2114076316
ontime3	4965.2113777101
ontime5	4965.2114076316
ontime6	4965.2114076316
ontime7	4965.2114076316
ontime8	4965.2114076316
l1events	218151

2.1.4 Events

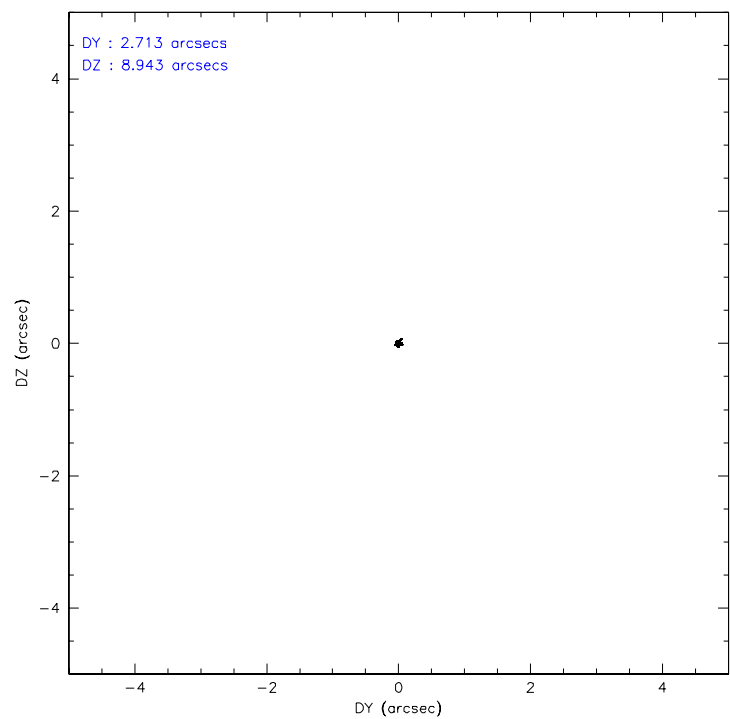
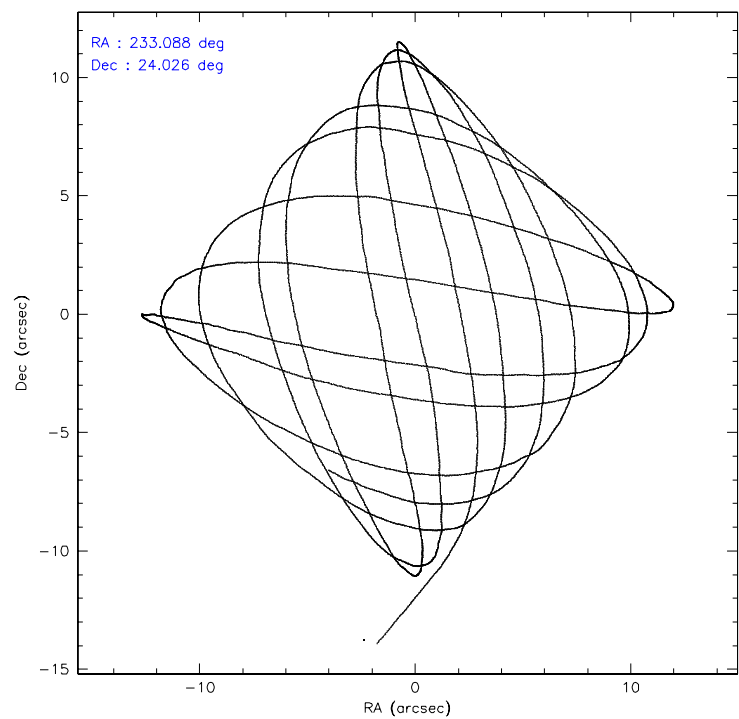
	ccd 2	ccd 3	ccd 5	ccd 6	ccd 7	ccd 8
level 1 events	31456	28715	47385	31050	42039	37506
rejected events	27778	25218	25359	27340	25020	30210
rejected %	88%	87%	53%	88%	59%	80%

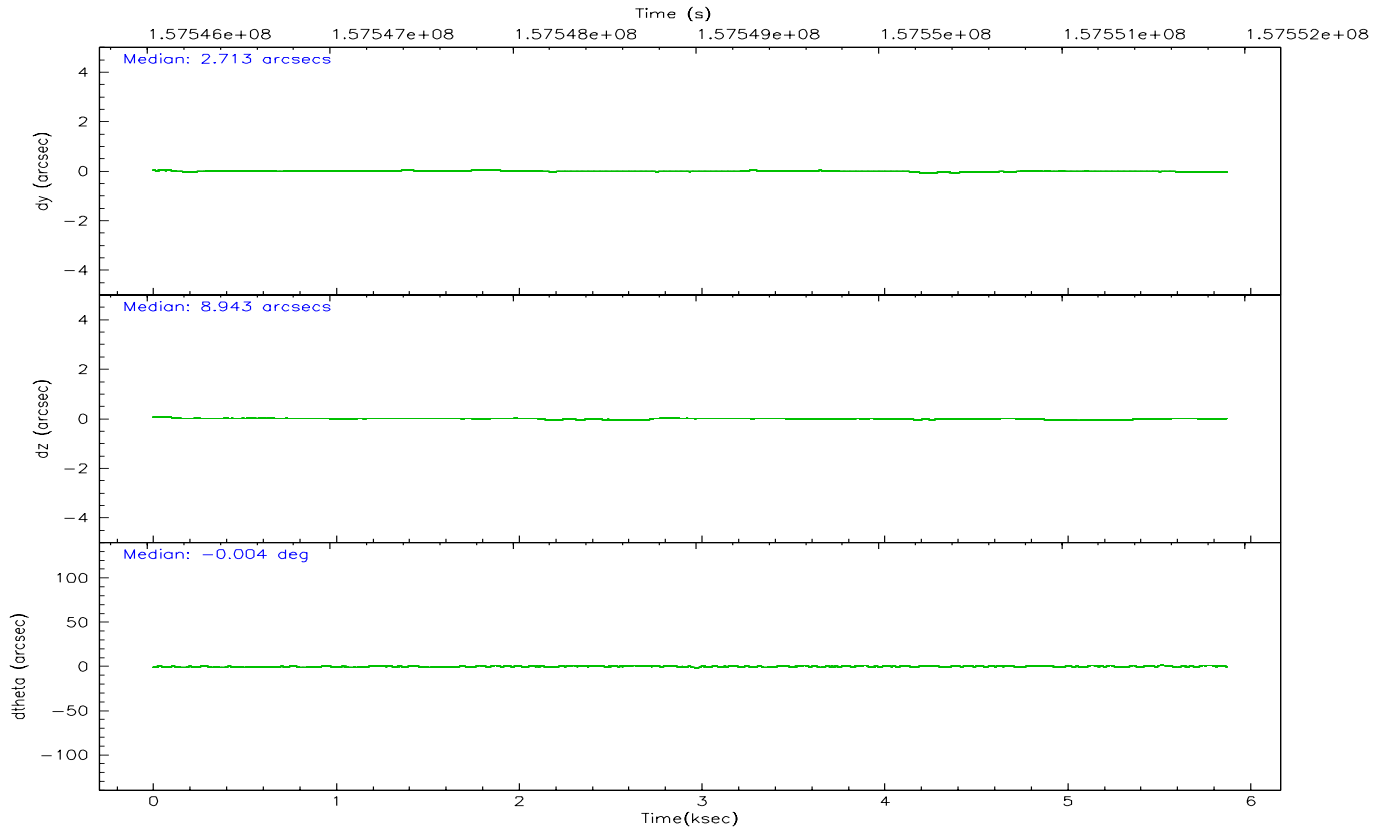
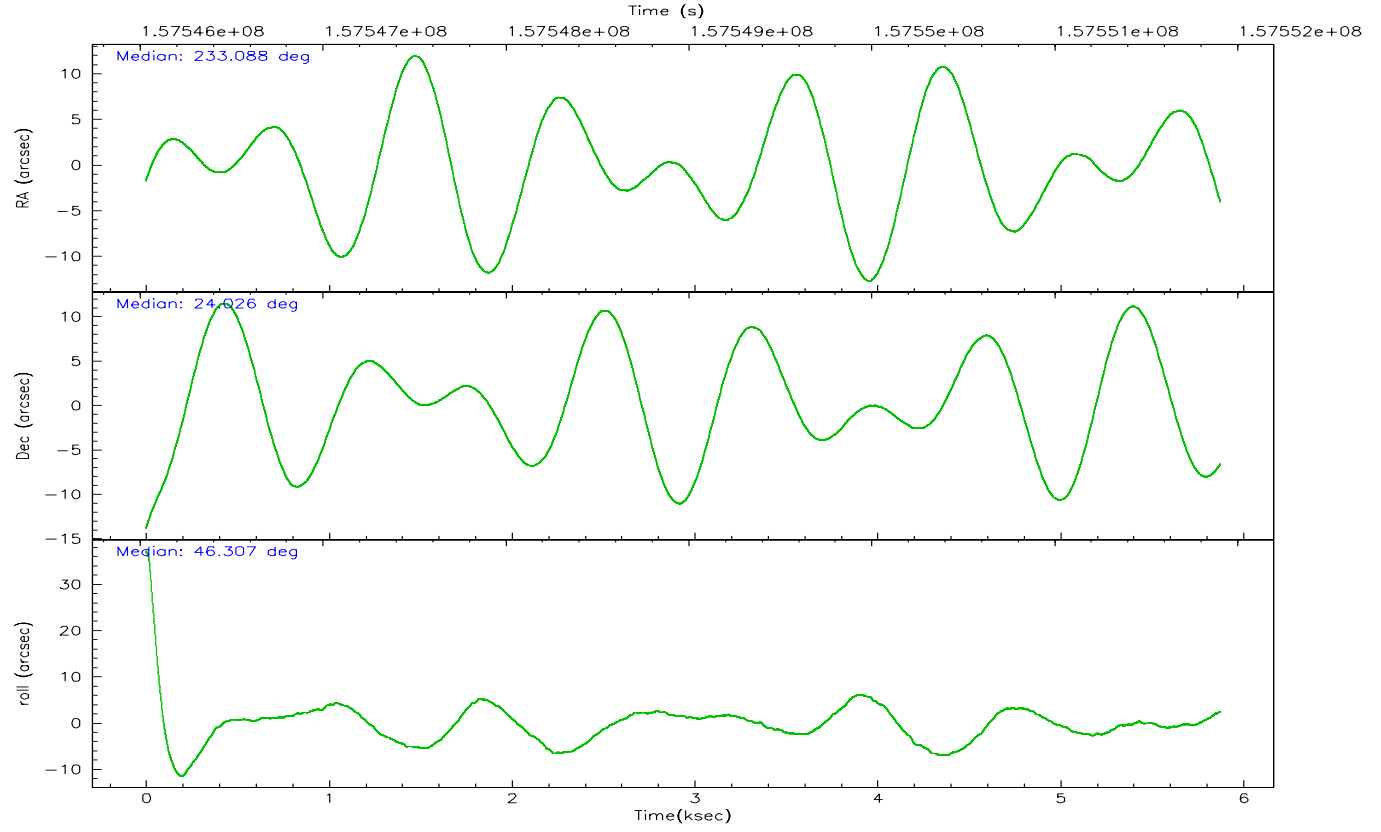
	ccd 2	ccd 3	ccd 5	ccd 6	ccd 7	ccd 8
grade 0 events	1594	1607	2830	1545	1210	2397
	5%	5%	5%	4%	2%	6%
grade 1 events	20	19	280	19	21	27
	0%	0%	0%	0%	0%	0%
grade 2 events	768	644	6680	734	4112	1583
	2%	2%	14%	2%	9%	4%
grade 3 events	359	334	497	366	965	797
	1%	1%	1%	1%	2%	2%
grade 4 events	372	338	513	321	924	707
	1%	1%	1%	1%	2%	1%
grade 5 events	1140	1283	2203	1422	2778	1853
	3%	4%	4%	4%	6%	4%
grade 6 events	587	574	11525	747	9819	1839
	1%	1%	24%	2%	23%	4%
grade 7 events	26616	23916	22857	25896	22210	28303
	84%	83%	48%	83%	52%	75%

2.2 Compared Parameters

Parameter	Planned	Actual	Parameter	Planned	Actual
Instrument	ACIS	ACIS	Obspar format version number	6	6
Detector	ACIS-235678	ACIS-235678	Obspar file type	PREDICTED	ACTUAL
Grating	NONE	NONE	Obspar update status	NONE	UPDATED
Data mode	FAINT	FAINT	Number of optional ACIS chips dropped	0	0
Observation mode	POINTING	POINTING	On-chip summing requested	N	N
Pointing RA	233.081460	233.0881917478637	Subarray requested	NONE	NONE
Pointing Dec	23.999453	24.02596415277684	Alternating exposures requested	N	N
Pointing Roll	46.163335	46.31730747478734	Primary exposure time	0.000000	3.2
SIM focus pos (mm)	-0.684267	-0.6828225247311905			
SIM defocus (mm)	0	0.001444936568705701			
SIM translation stage pos (mm)	-190.132523	-190.1425803651734			
SIM translation stage offset (mm)	0	0.01005778216563158			
Observation start time	157546903.184000	157545597.70806			
Observation start date	2002-12-29T11:00:39	2002-12-29T10:39:57			
Observation end time	157551903.184000	157552224.33333			
Observation end date	2002-12-29T12:23:59	2002-12-29T12:30:24			
Read mode	TIMED	TIMED			

2.3 Aspect



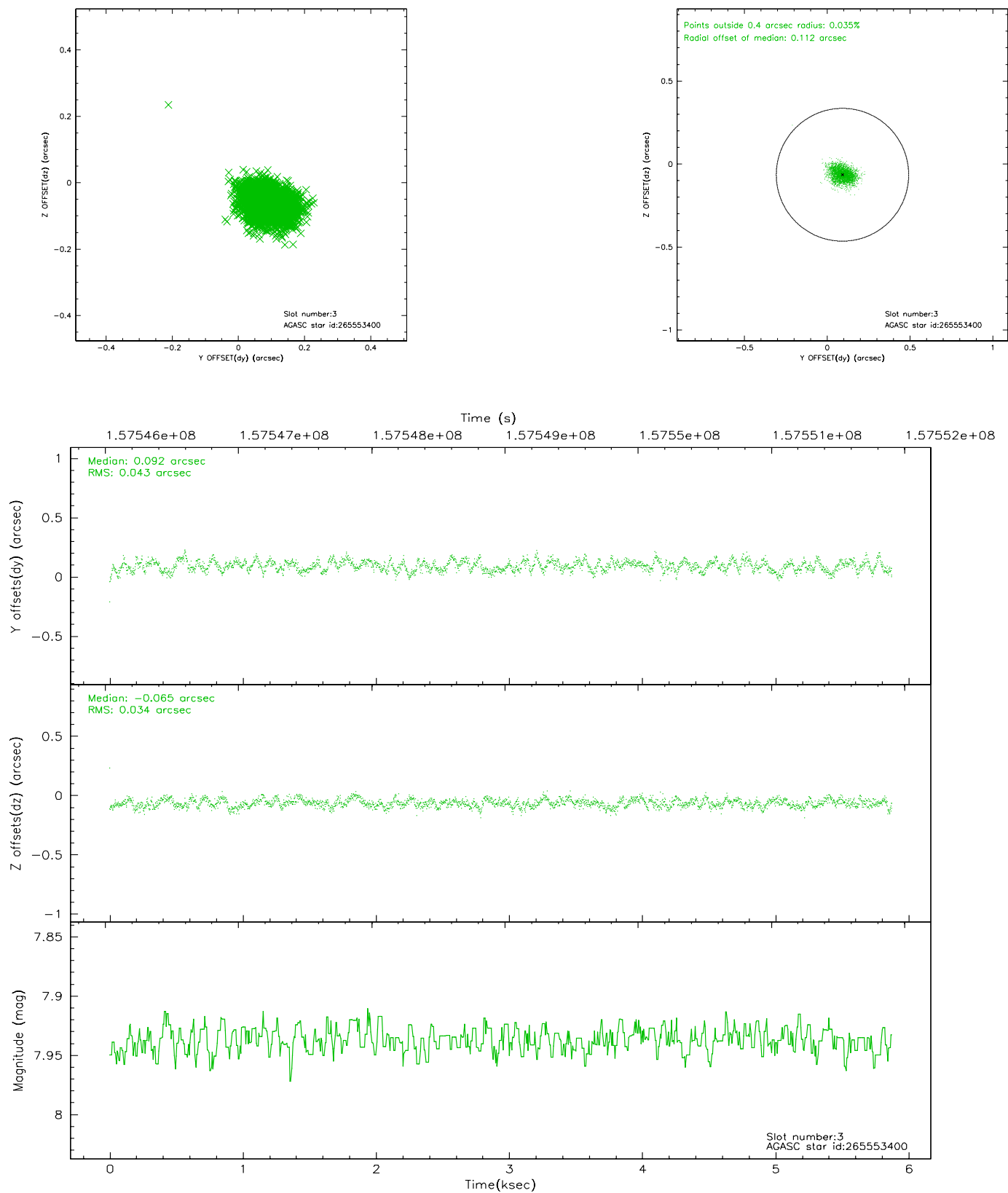


Slot Statistics

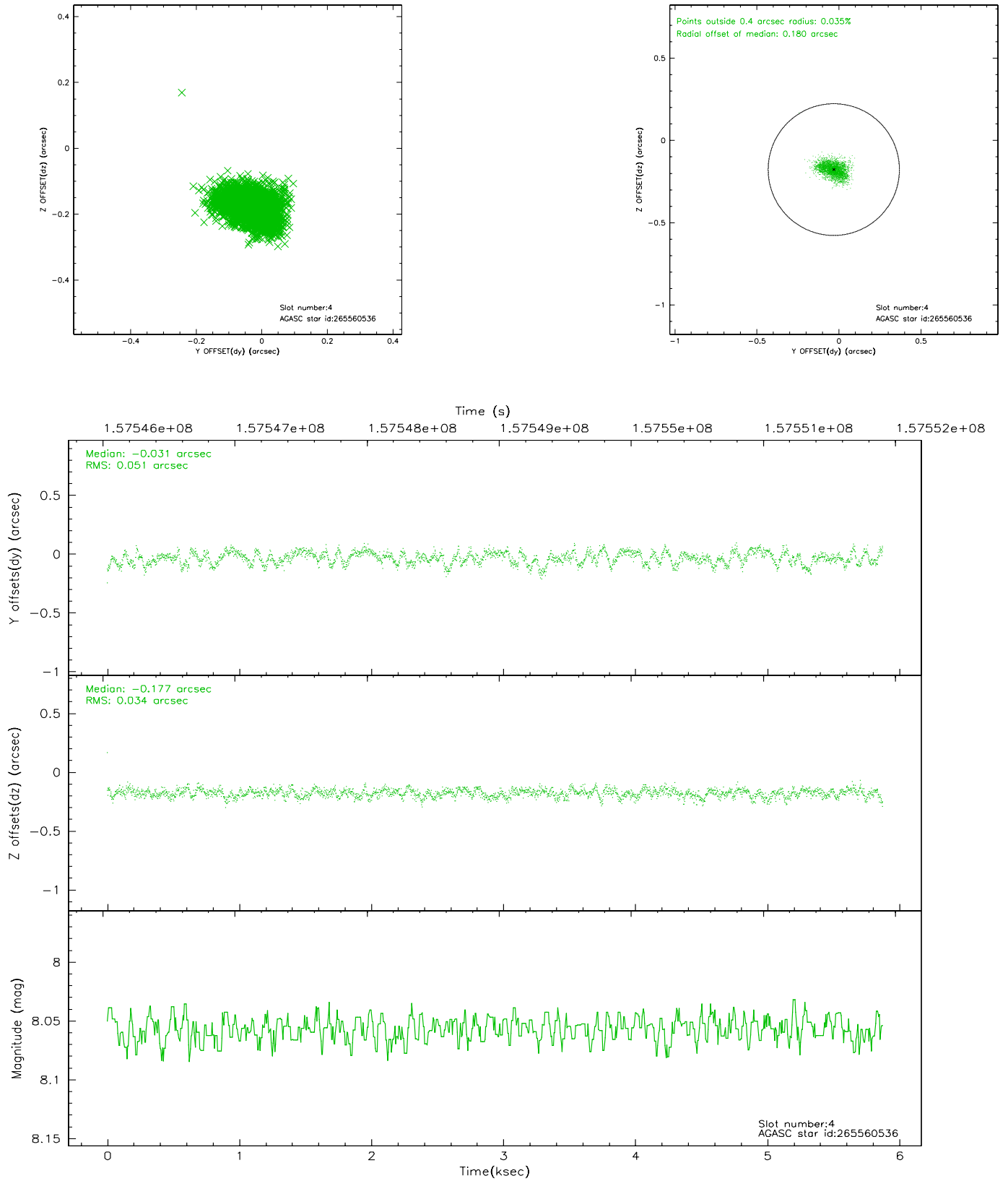
slot	status	id	mag	n_pts	med_dy	med_dz	dr1	dr2	ra	dec	mean_y	mean_z
0	FID	ACIS-S-2	7.10	1433	-0.012	0.019	0.007	0.011	0.000000	0.000000	-755.35	-1730.09
1	FID	ACIS-S-4	7.20	1433	-0.046	0.001	0.005	0.010	0.000000	0.000000	2157.43	177.34
2	FID	ACIS-S-5	7.24	1433	0.027	-0.011	0.006	0.011	0.000000	0.000000	-1806.86	172.14
3	GUIDE	265553400	7.94	2867	0.092	-0.065	0.059	0.092	232.475560	23.817136	-1852.54	987.97
4	GUIDE	265560536	8.06	2867	-0.031	-0.177	0.065	0.106	232.543821	23.755517	-1858.72	672.34
5	GUIDE	265562656	8.93	2866	-0.091	0.200	0.068	0.113	233.555152	23.638057	145.07	-2025.11
6	GUIDE	265563224	8.50	2867	-0.048	0.169	0.080	0.126	233.424580	23.443962	-656.27	-2201.54
7	GUIDE	265558384	9.65	2864	0.081	-0.123	0.094	0.152	232.899731	24.051291	-279.09	560.07

2.4 Star Slots

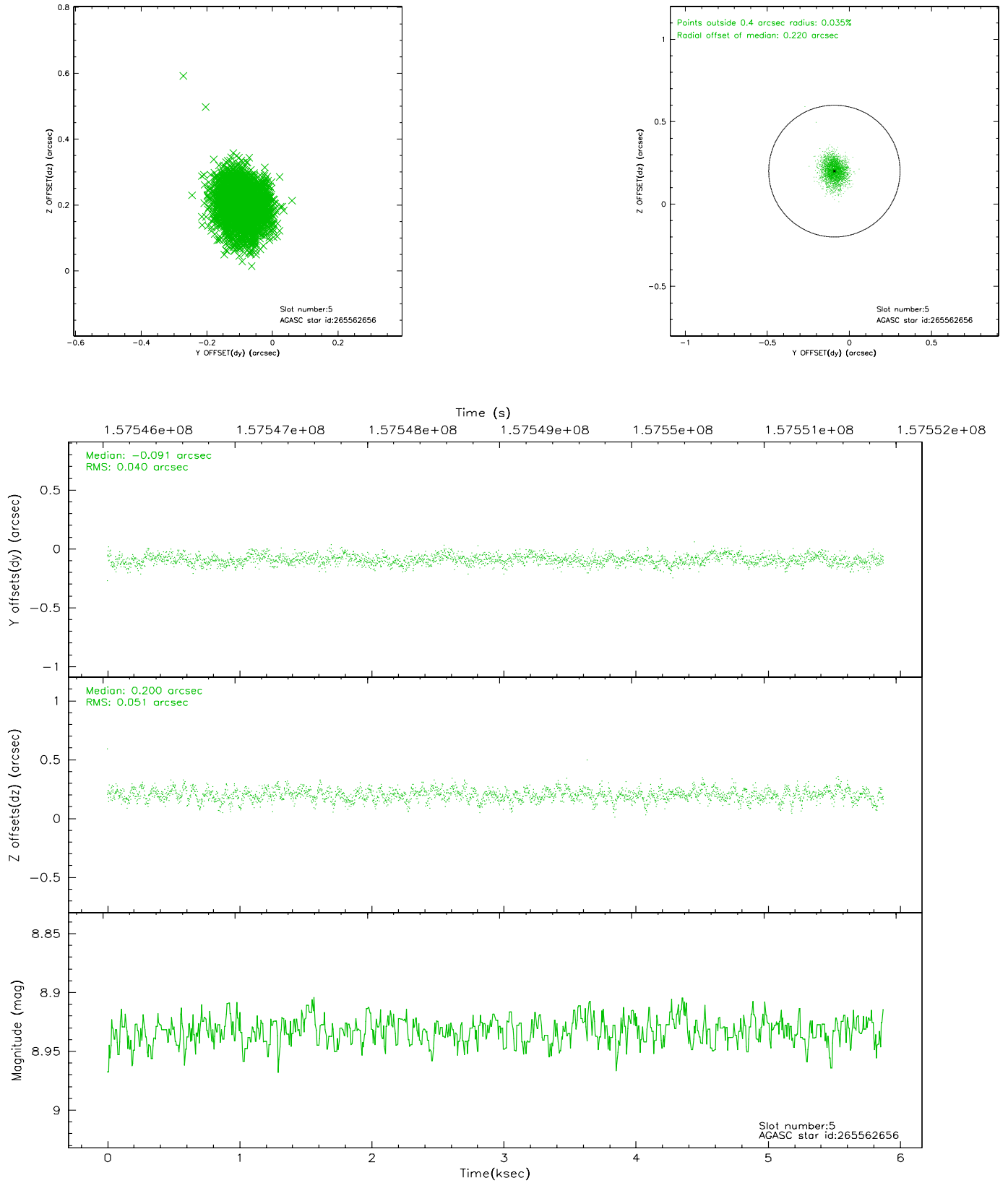
2.4.1 Slot 3



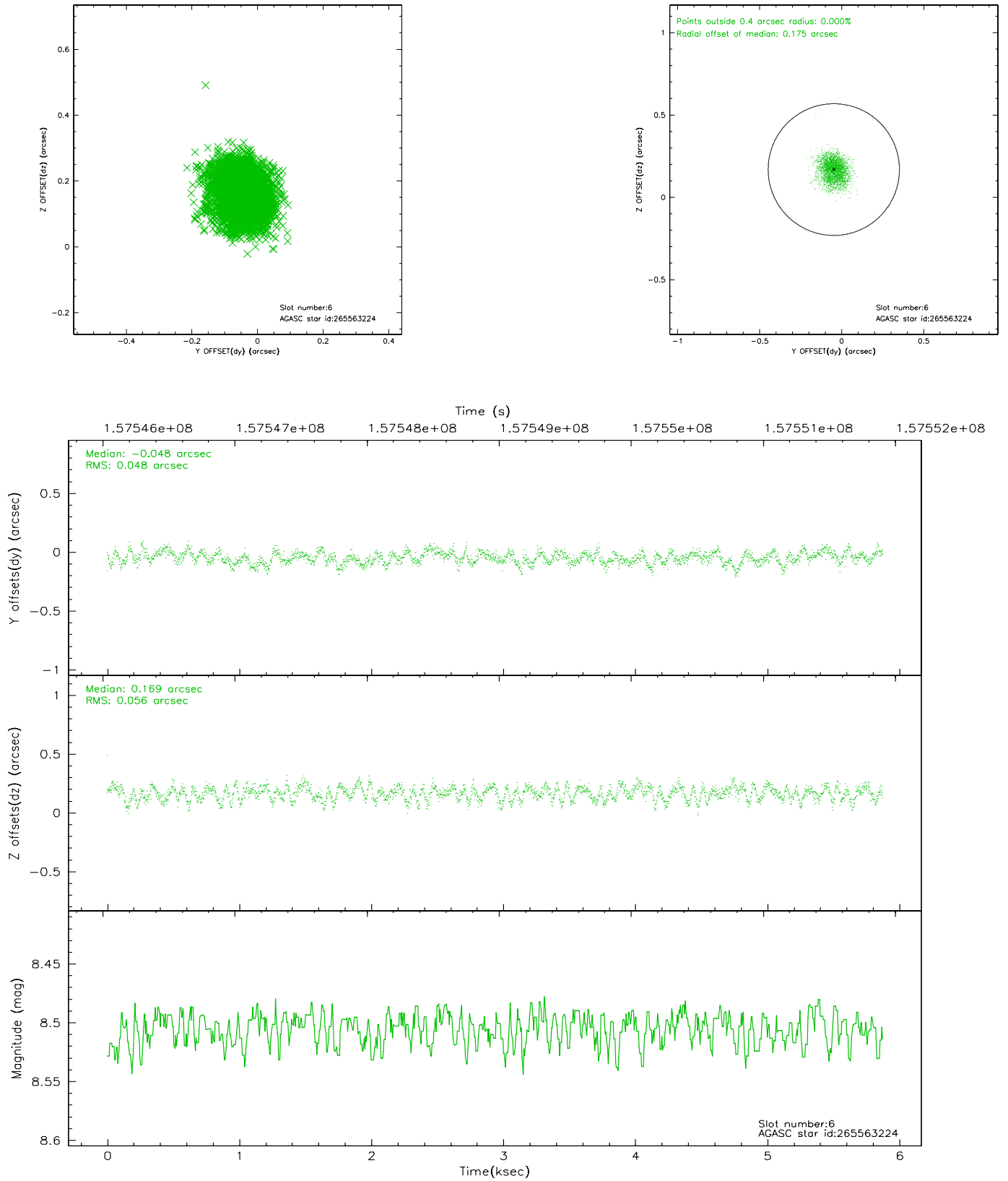
2.4.2 Slot 4



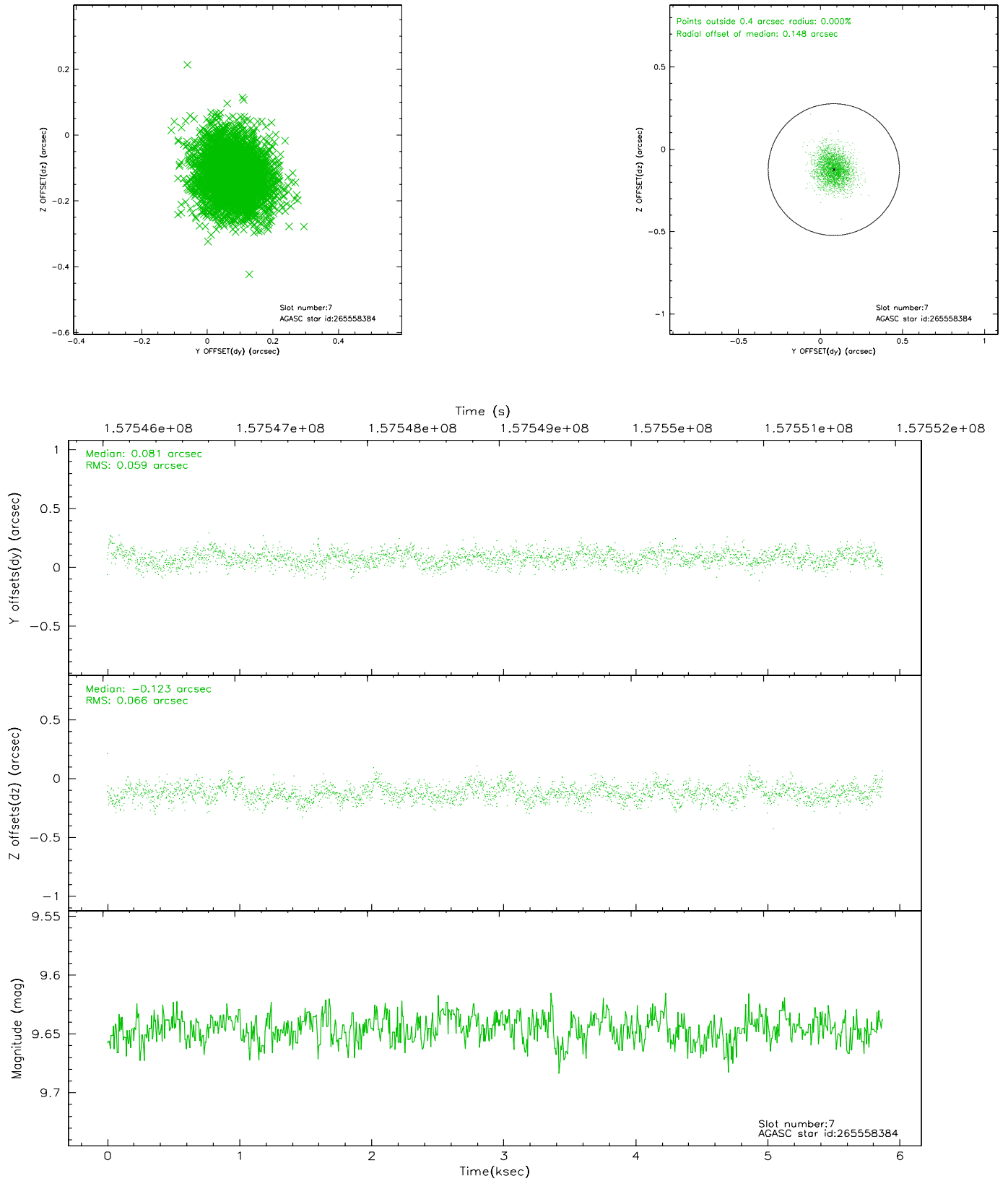
2.4.3 Slot 5



2.4.4 Slot 6

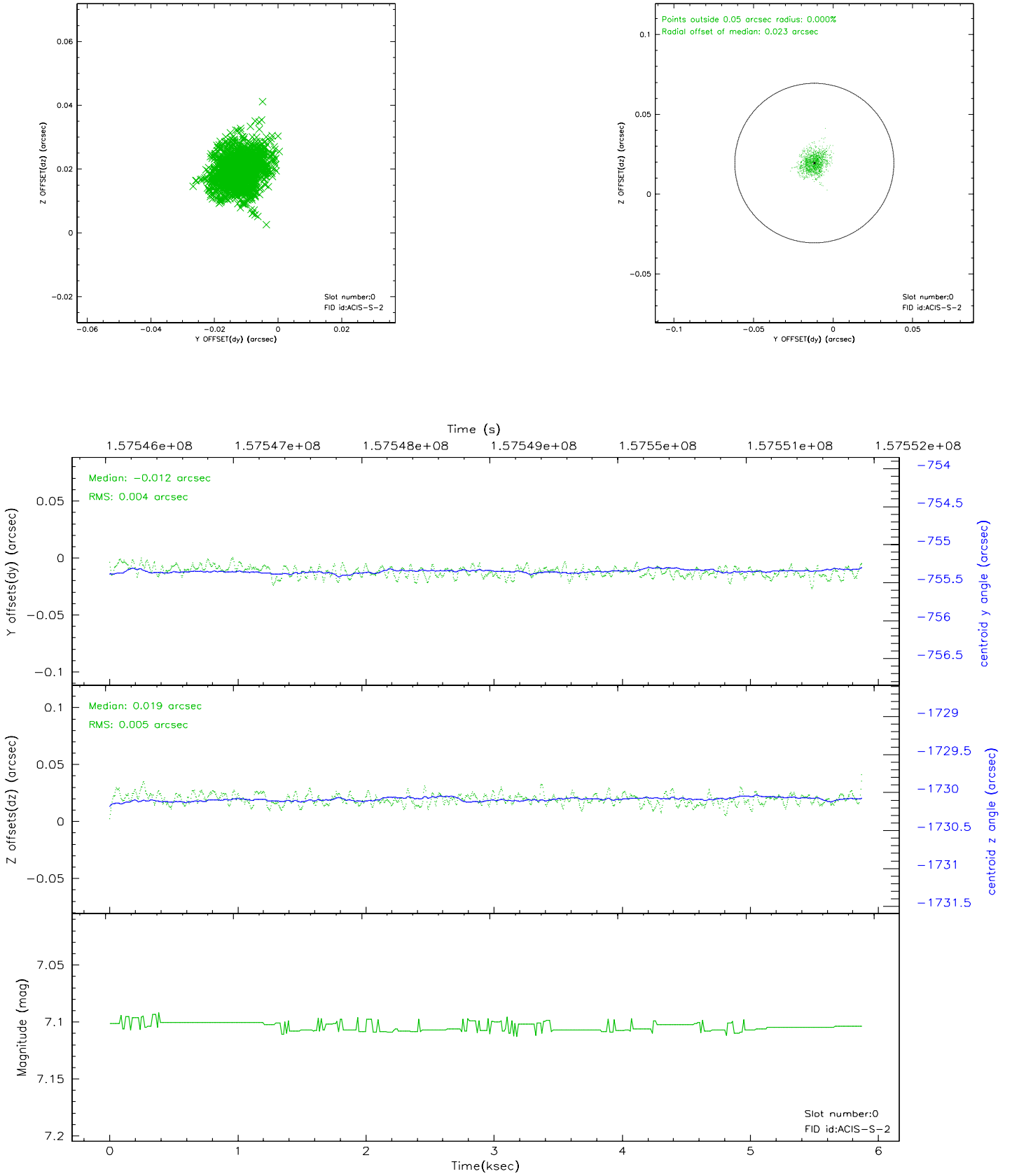


2.4.5 Slot 7

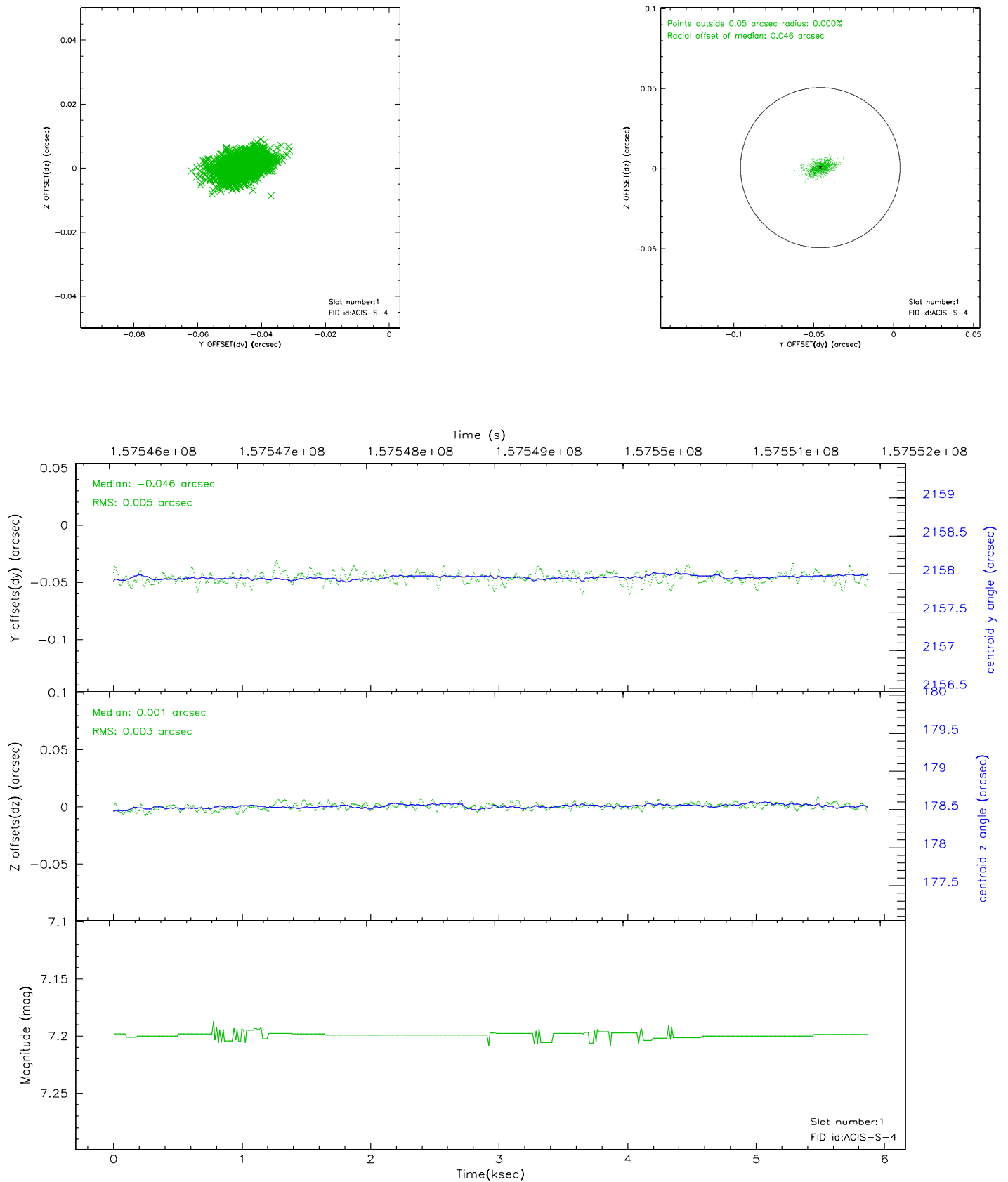


2.5 FID Slots

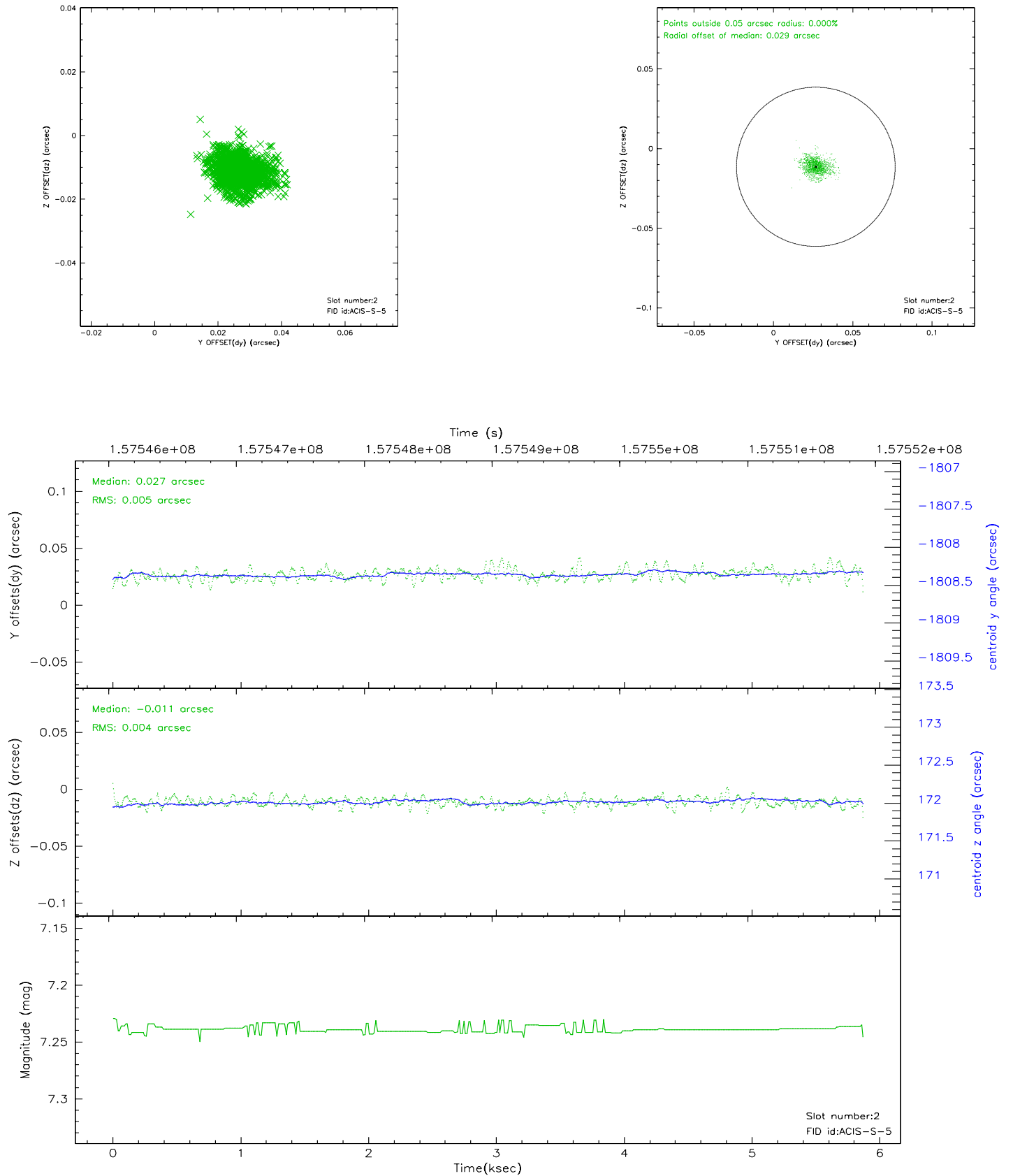
2.5.1 Slot 0



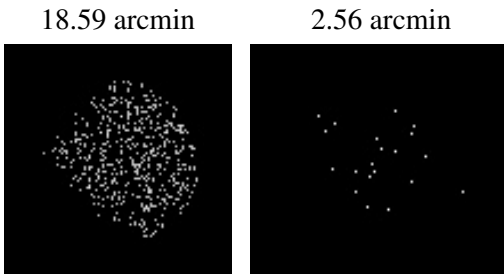
2.5.2 Slot 1



2.5.3 Slot 2



3 Point Sources



A Summary

A.1 Status

V&V Scientist	Beth Sundheim
V&V Date (YYYY-MM-DD)	2006.10.16
V&V Edition	1
V&V Disposition and Status	OK
V&V Charge Time	4.959

A.2 Comments