

V&V Reference Report

L2 ASCDS Version : 7.6.9

Observation 3287 - L2 Version 001
Chandra X-Ray Center

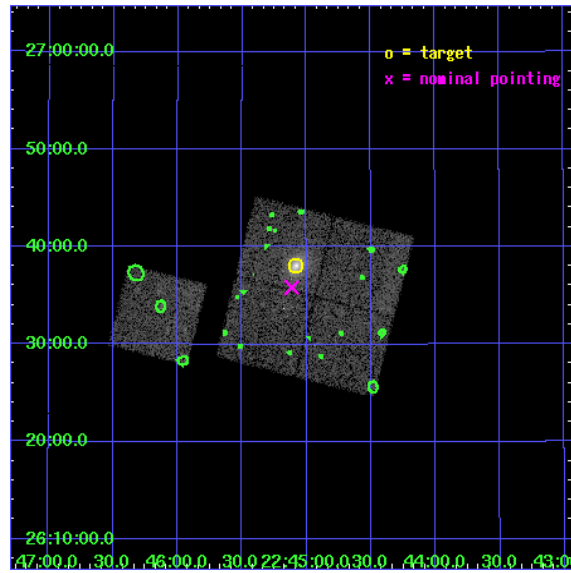
L2 Processing Date : Oct 13 2006

Contents

1	Front	2
2	OBI	3
2.1	OBI	3
2.1.1	Images	3
2.1.2	Bias	3
2.1.3	Parameters	4
2.1.4	Events	4
2.2	Compared Parameters	5
2.3	Aspect	6
2.4	Star Slots	9
2.4.1	Slot 3	9
2.4.2	Slot 4	10
2.4.3	Slot 5	11
2.4.4	Slot 6	12
2.4.5	Slot 7	13
2.5	FID Slots	14
2.5.1	Slot 0	14
2.5.2	Slot 1	15
2.5.3	Slot 2	16
3	Point Sources	17
A	Summary	18
A.1	Status	18
A.2	Comments	18

1 Front

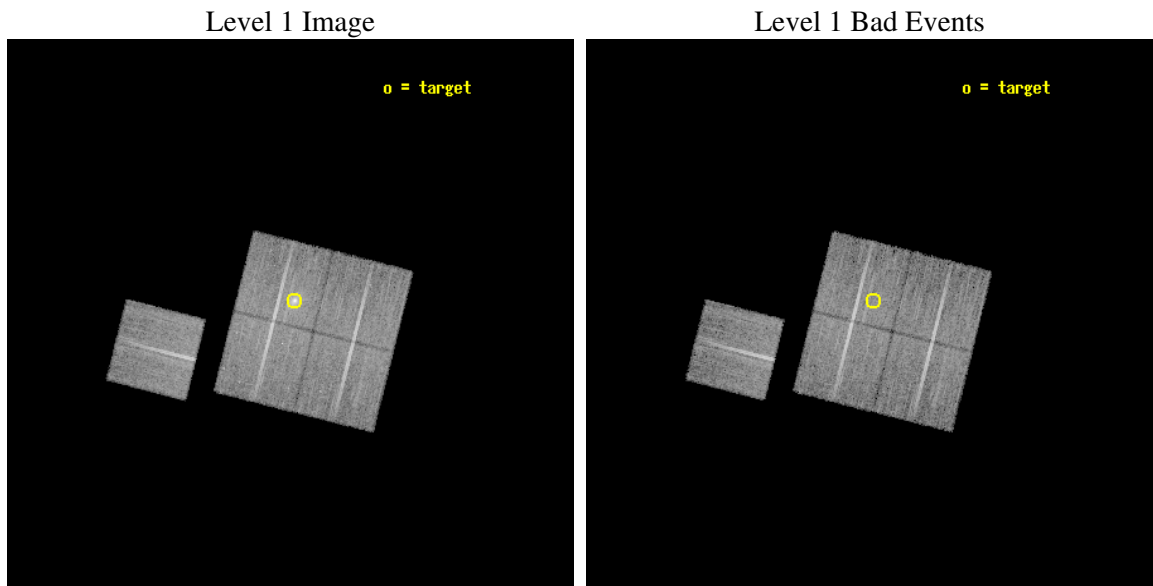
seq_num	800287
obs_id	3287
title	MACS: THE X-RAY PROPERTIES OF THE MOST MASSIVE GALAXY CLUSTERS AT $Z>0.3$
observer	Dr Harald Ebeling
object	MACSJ2245.0+2637
dtcycle	0
cycle	P
ra_targ	341.27
dec_targ	26.634444
ra_nom	341.27819844574
dec_nom	26.597463513235
roll_nom	284.13669724667
revision	2
ontime	17084.058977038
livetime	16860.843169401
ontime0	17087.199967146
ontime1	17084.058976978
ontime2	17087.199967146
ontime3	17084.058977038
ontime6	17087.199967146
l2events	49429



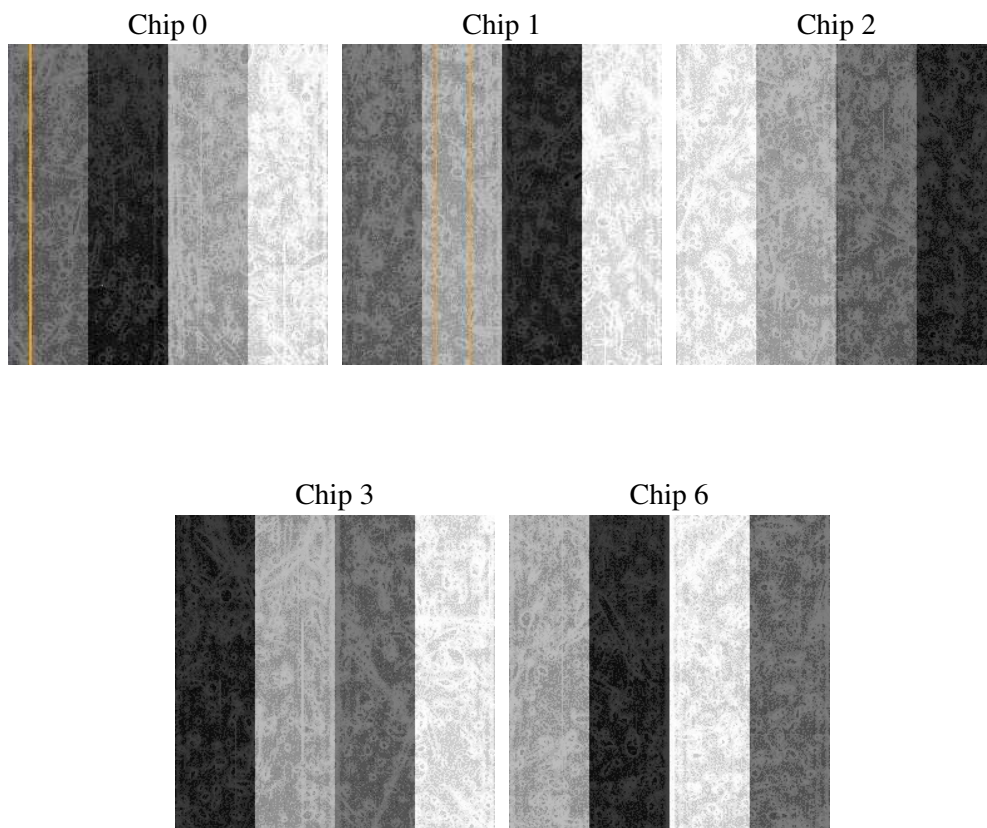
2 OBI

2.1 OBI

2.1.1 Images



2.1.2 Bias



2.1.3 Parameters

obi_num	0
ascdsver	7.6.9
caldbver	3.2.3
date	2006-10-13T11:33:27
revision	2

sched_exp_time	17000.000000
ontime	17090.197491854
ontime0	17093.338462055
ontime1	17090.197491795
ontime2	17093.338462055
ontime3	17090.197491854
ontime6	17093.338462055
llevents	452756

2.1.4 Events

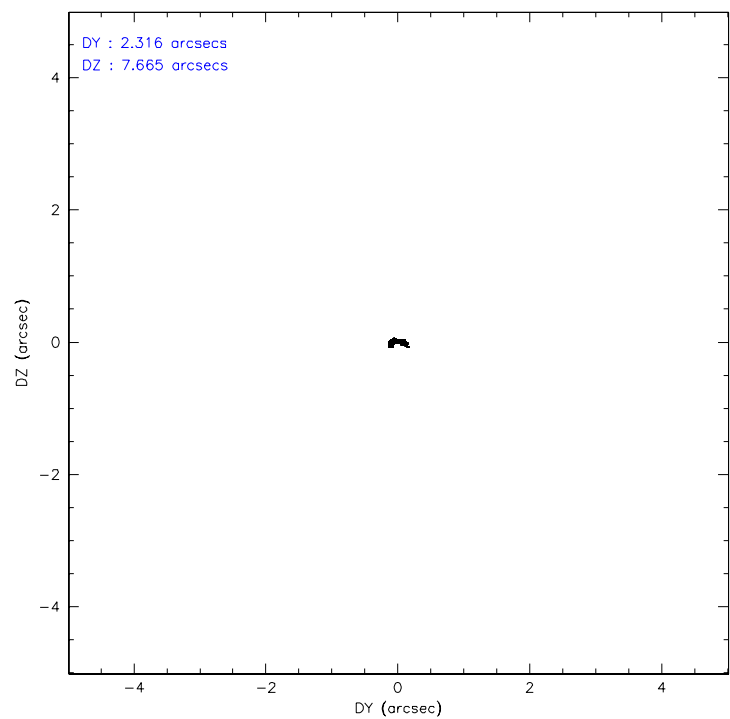
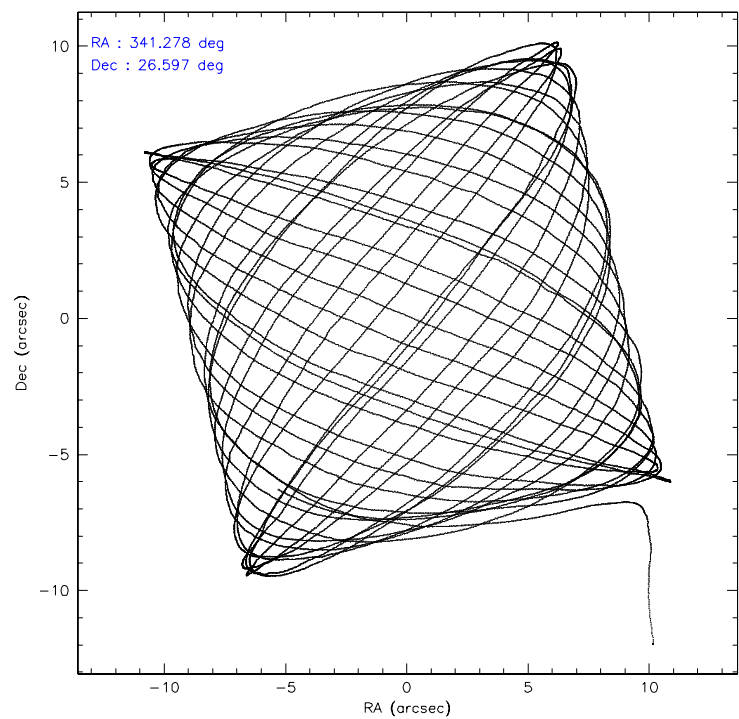
	ccd 0	ccd 1	ccd 2	ccd 3	ccd 6
level 1 events	84936	85843	93603	97662	90712
rejected events	75072	74868	83340	81218	80637
rejected %	88%	87%	89%	83%	88%

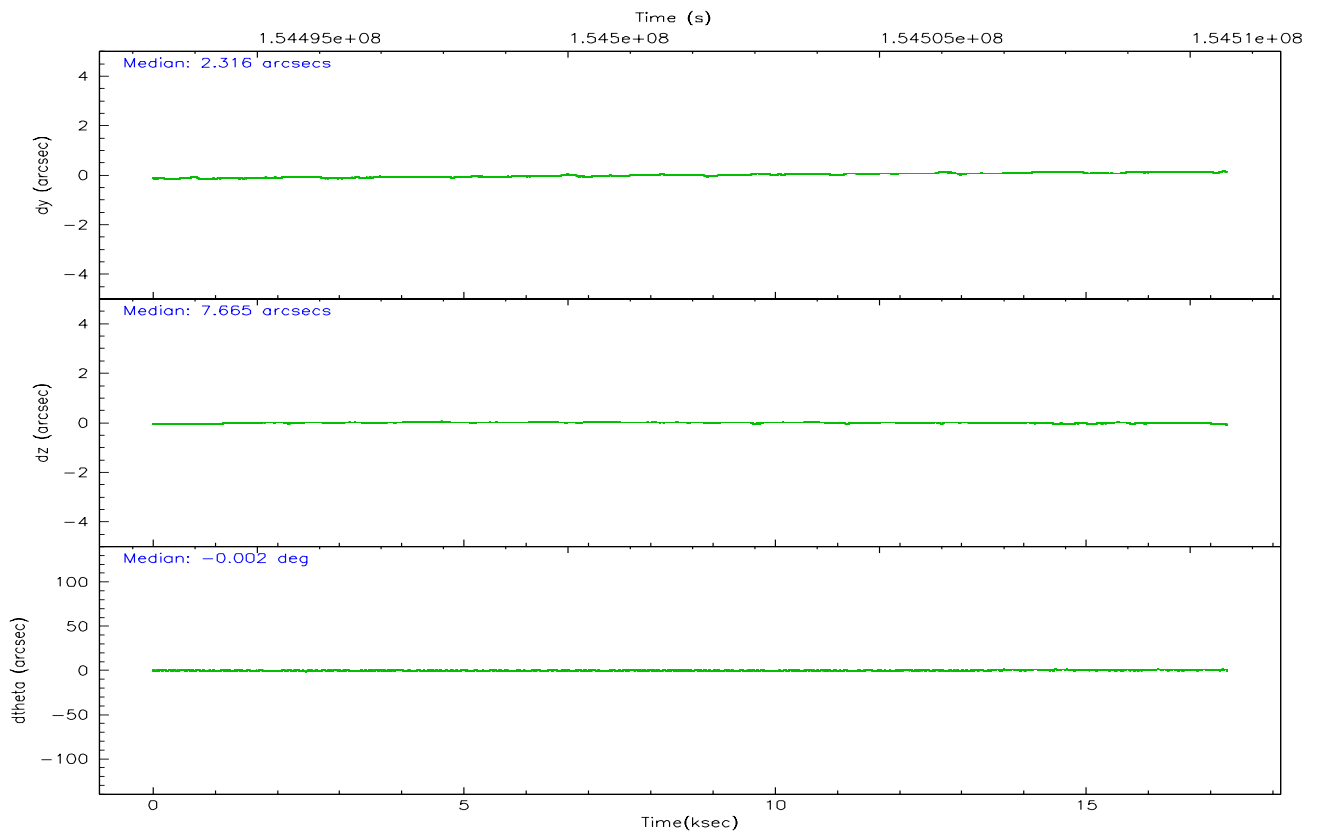
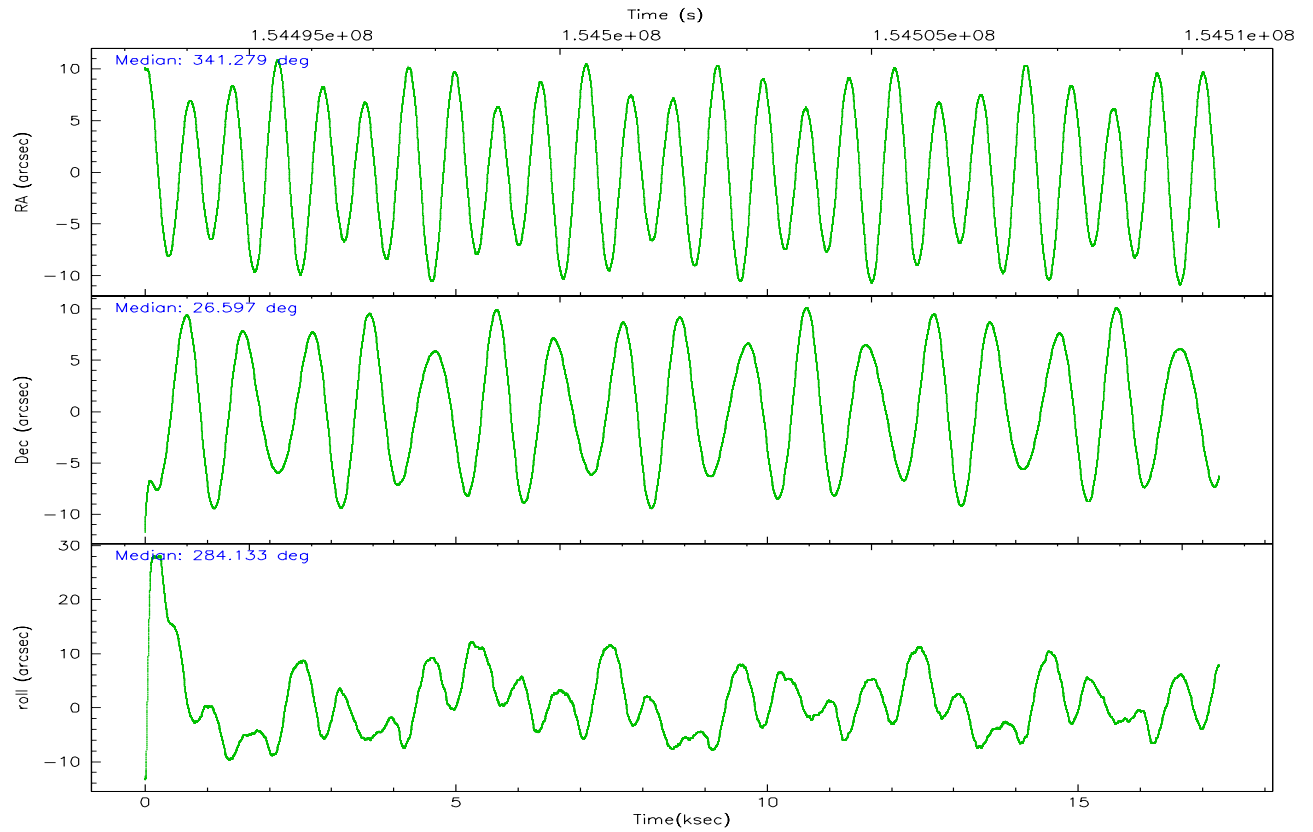
	ccd 0	ccd 1	ccd 2	ccd 3	ccd 6
grade 0 events	3643	4172	4251	9517	3830
	4%	4%	4%	9%	4%
grade 1 events	33	45	59	75	42
	0%	0%	0%	0%	0%
grade 2 events	2193	2201	2167	2590	2002
	2%	2%	2%	2%	2%
grade 3 events	1107	1200	1072	1220	1044
	1%	1%	1%	1%	1%
grade 4 events	1028	1214	1053	1208	1116
	1%	1%	1%	1%	1%
grade 5 events	3084	3190	2927	3466	3425
	3%	3%	3%	3%	3%
grade 6 events	1895	2192	1723	1915	2088
	2%	2%	1%	1%	2%
grade 7 events	71953	71629	80351	77671	77165
	84%	83%	85%	79%	85%

2.2 Compared Parameters

Parameter	Planned	Actual	Parameter	Planned	Actual
Instrument	ACIS	ACIS	Obspar format version number	6	6
Detector	ACIS-01236	ACIS-01236	Obspar file type	PREDICTED	ACTUAL
Grating	NONE	NONE	Obspar update status	NONE	UPDATED
Data mode	VFAINT	VFAINT	Number of optional ACIS chips dropped	0	0
Observation mode	POINTING	POINTING	On-chip summing requested	N	N
Pointing RA	341.256754	341.2781984457357	Subarray requested	NONE	NONE
Pointing Dec	26.617082	26.59746351323458	Alternating exposures requested	N	N
Pointing Roll	283.937646	284.1366972466704	Primary exposure time	0.000000	3.1
SIM focus pos (mm)	-0.782348	-0.7809083437167272			
SIM defocus (mm)	0	0.001439871863259334			
SIM translation stage pos (mm)	-227.742463	-227.734108438797			
SIM translation stage offset (mm)	-5.85	-5.858344564132665			
Observation start time	154493592.184000	154492583.83068			
Observation start date	2002-11-24T02:52:08	2002-11-24T02:36:23			
Observation end time	154510592.184000	154511115.31895			
Observation end date	2002-11-24T07:35:28	2002-11-24T07:45:15			
Read mode	TIMED	TIMED			

2.3 Aspect



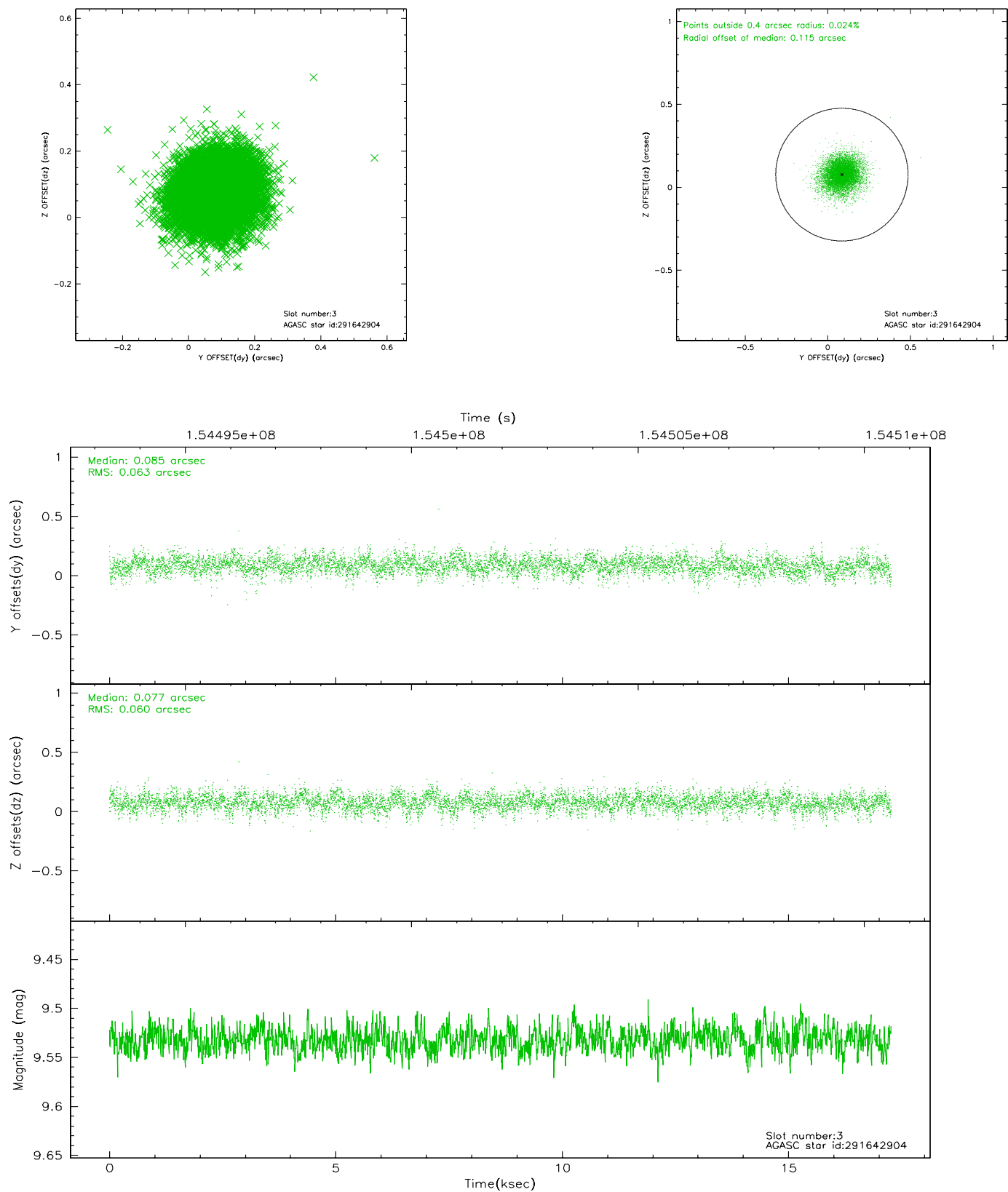


Slot Statistics

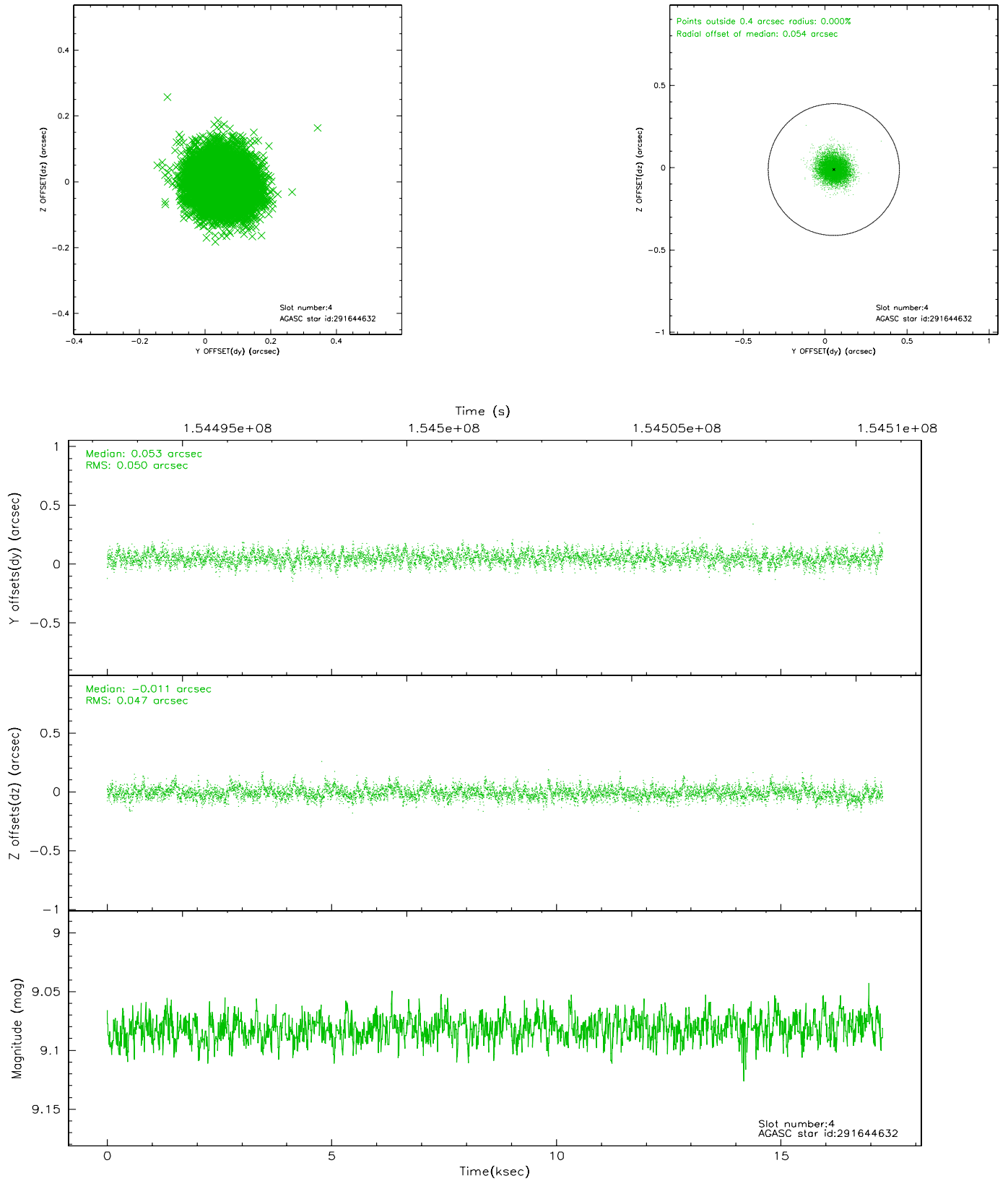
slot	status	id	mag	n_pts	med_dy	med_dz	dr1	dr2	ra	dec	mean_y	mean_z
0	FID	ACIS-I-1	7.24	4211	0.014	0.034	0.008	0.017	0.000000	0.000000	937.39	-951.28
1	FID	ACIS-I-5	7.23	4211	-0.104	0.057	0.008	0.020	0.000000	0.000000	-1810.69	946.09
2	FID	ACIS-I-6	7.25	4210	-0.003	-0.021	0.009	0.017	0.000000	0.000000	402.67	1590.78
3	GUIDE	291642904	9.53	8418	0.085	0.077	0.092	0.153	341.838064	26.070490	2358.03	1350.81
4	GUIDE	291644632	9.08	8416	0.053	-0.011	0.074	0.120	341.281560	26.048131	2007.13	-416.21
5	GUIDE	292037024	9.62	8418	-0.028	-0.195	0.095	0.160	340.913037	26.550252	-34.74	-1133.13
6	GUIDE	292164032	8.85	8420	-0.051	0.101	0.068	0.110	341.540574	26.846542	-583.70	1082.89
7	GUIDE	292035632	10.21	8417	-0.060	0.028	0.146	0.246	341.093208	26.825504	-855.69	-330.02

2.4 Star Slots

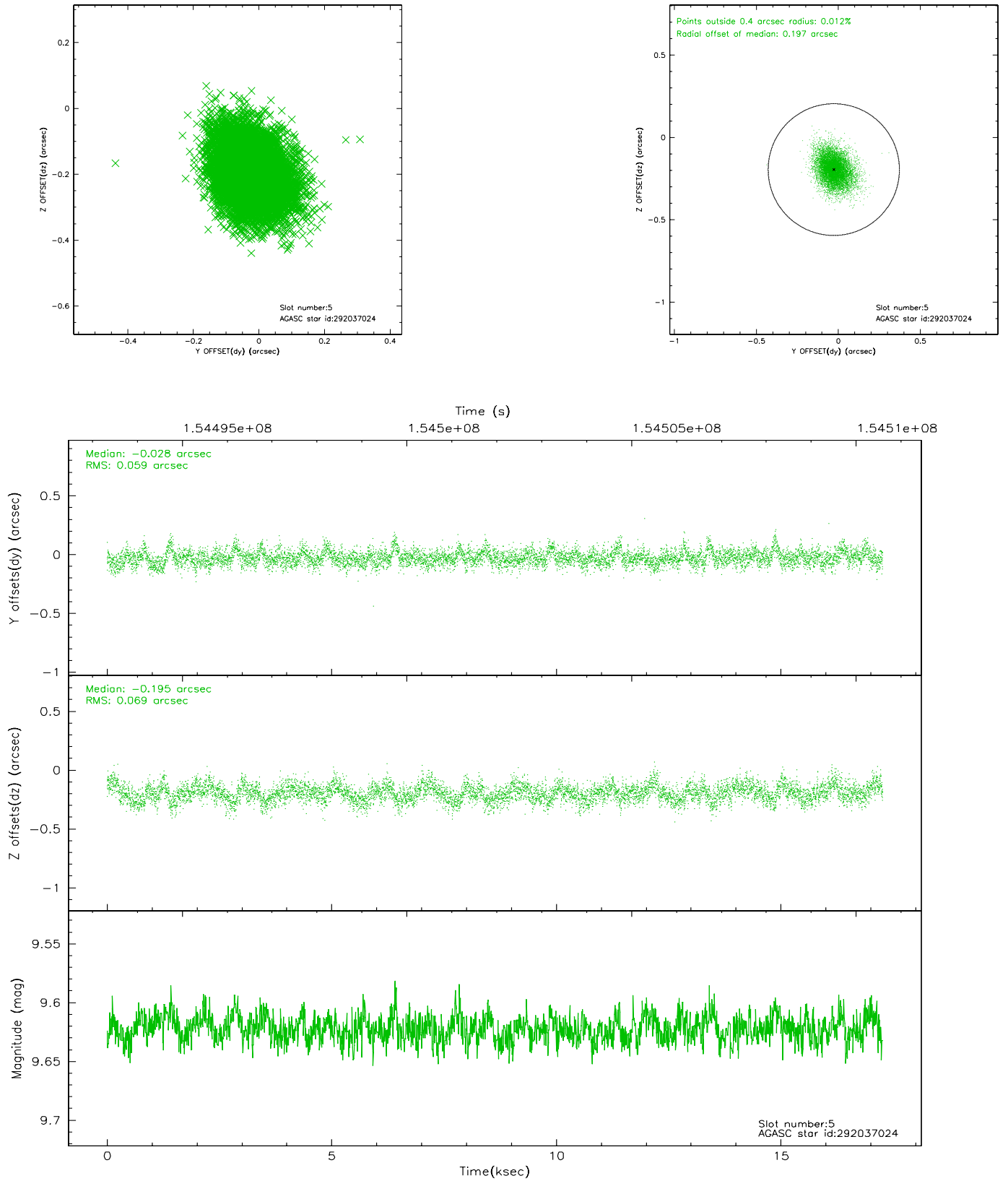
2.4.1 Slot 3



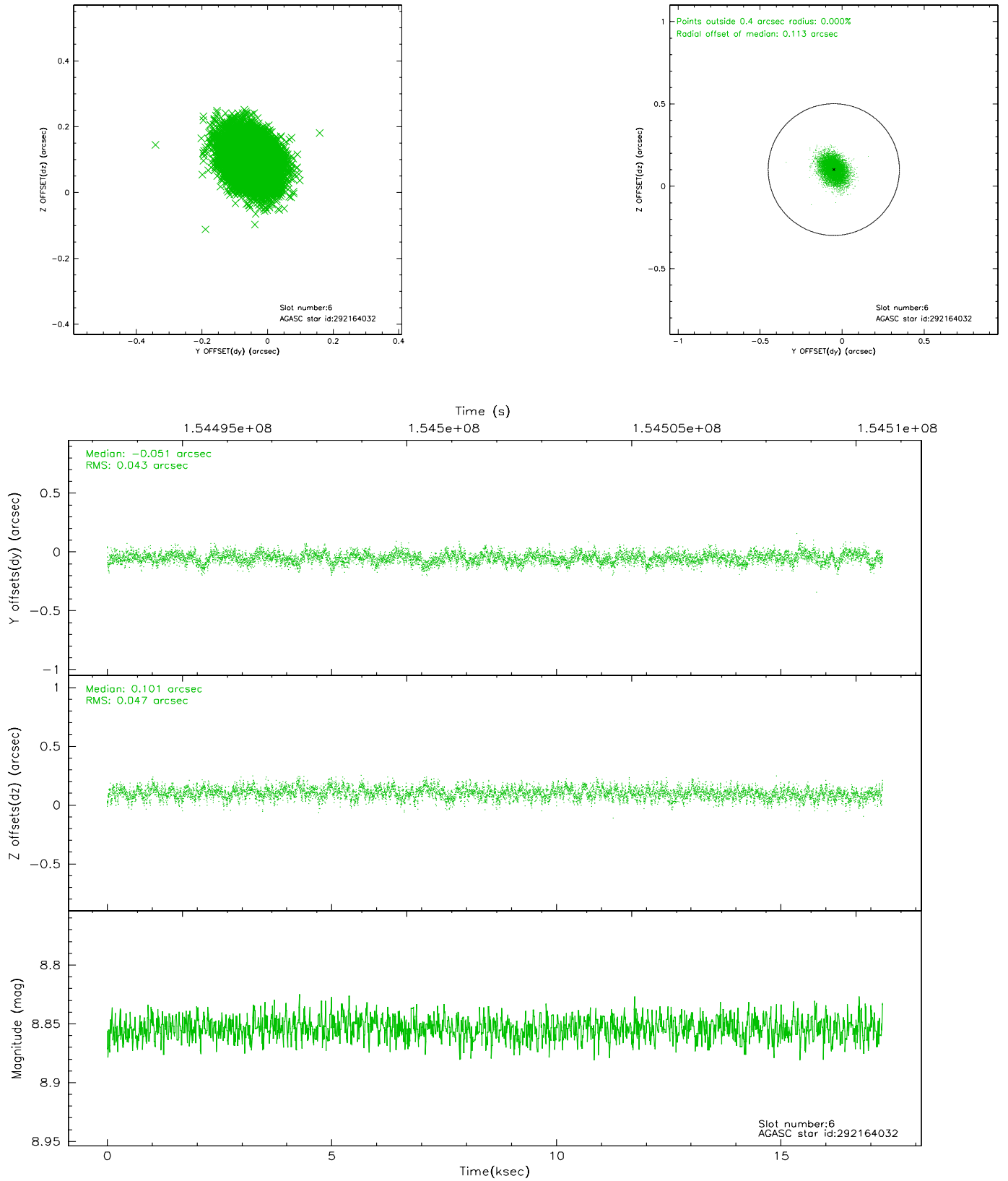
2.4.2 Slot 4



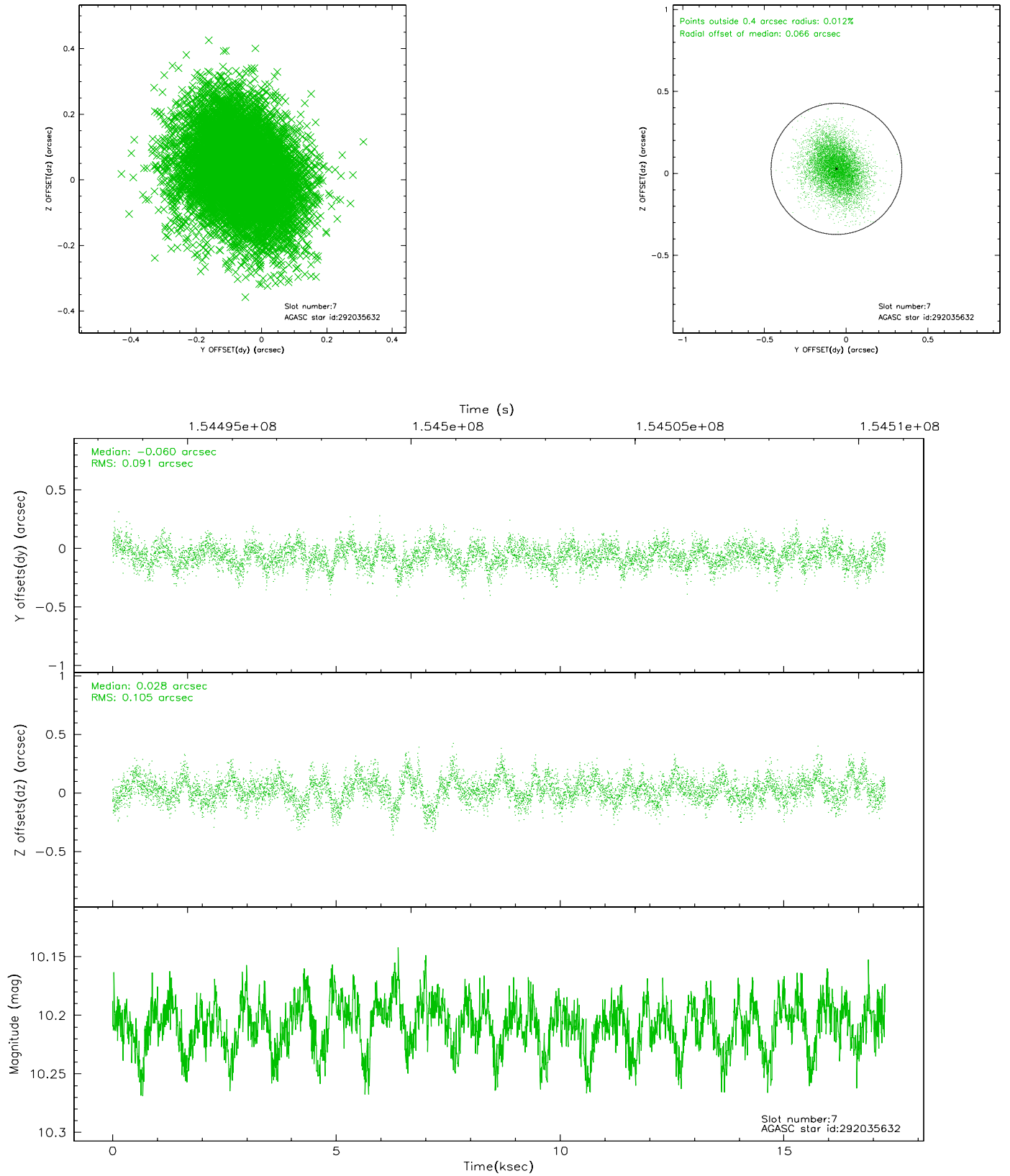
2.4.3 Slot 5



2.4.4 Slot 6

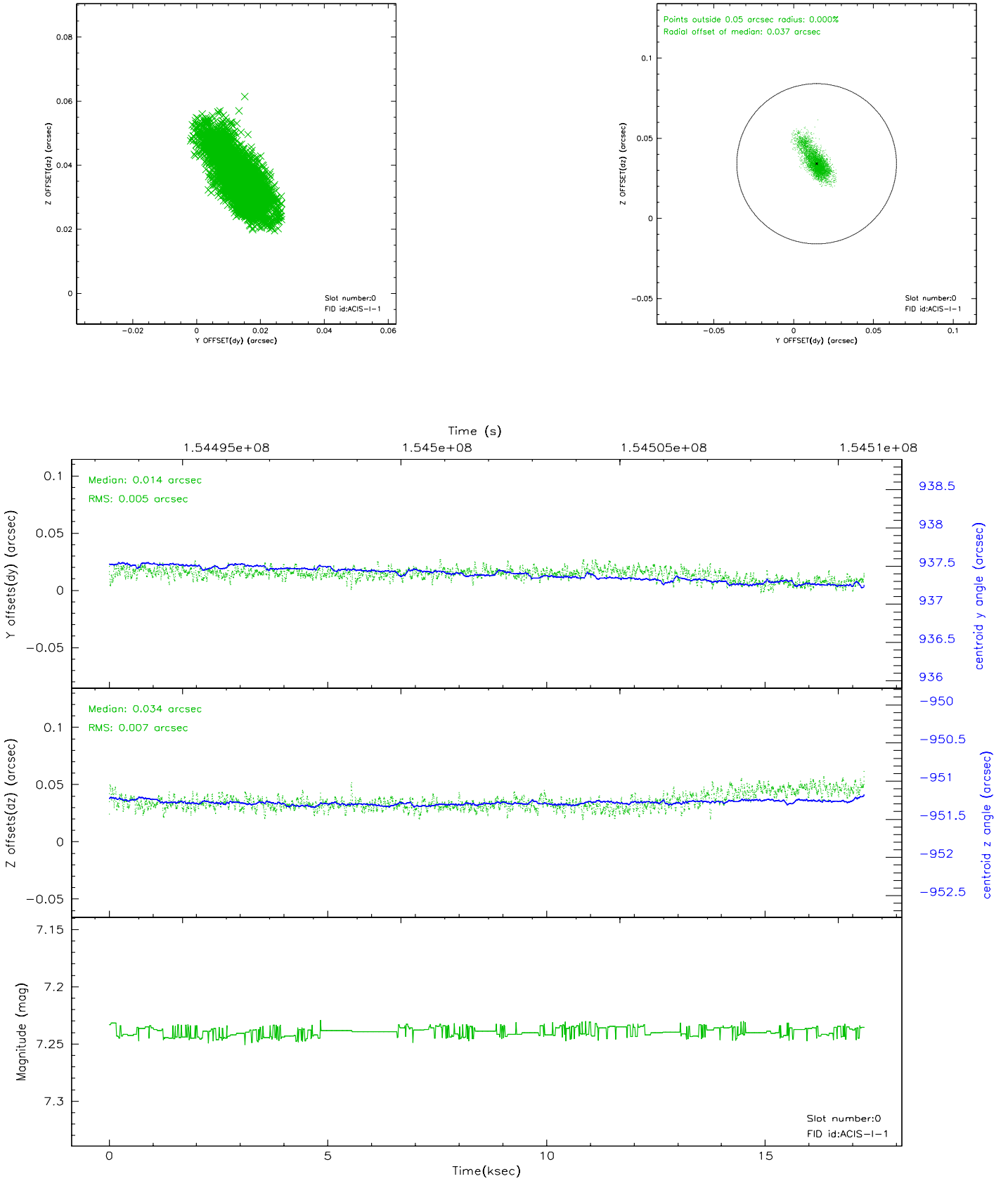


2.4.5 Slot 7

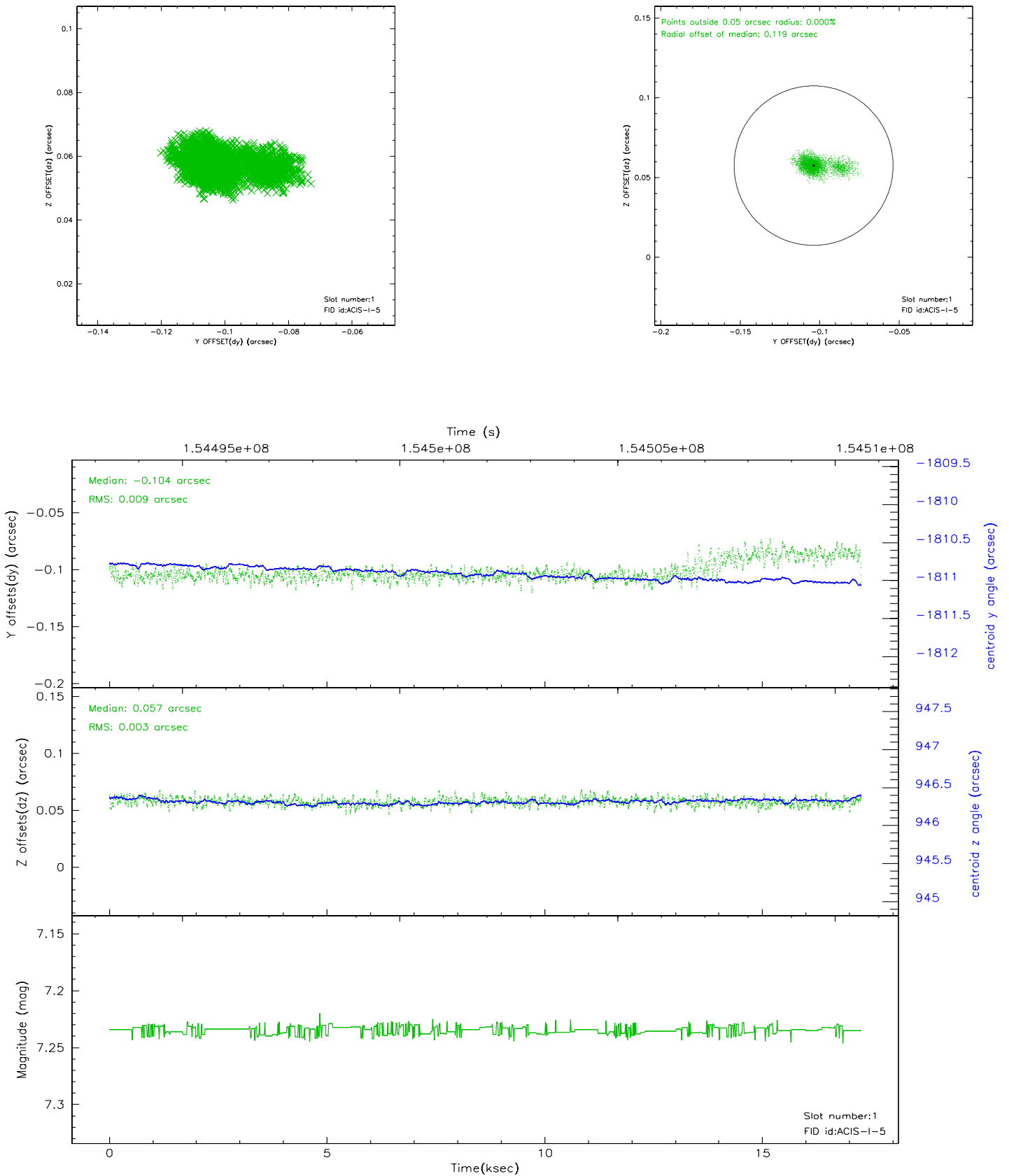


2.5 FID Slots

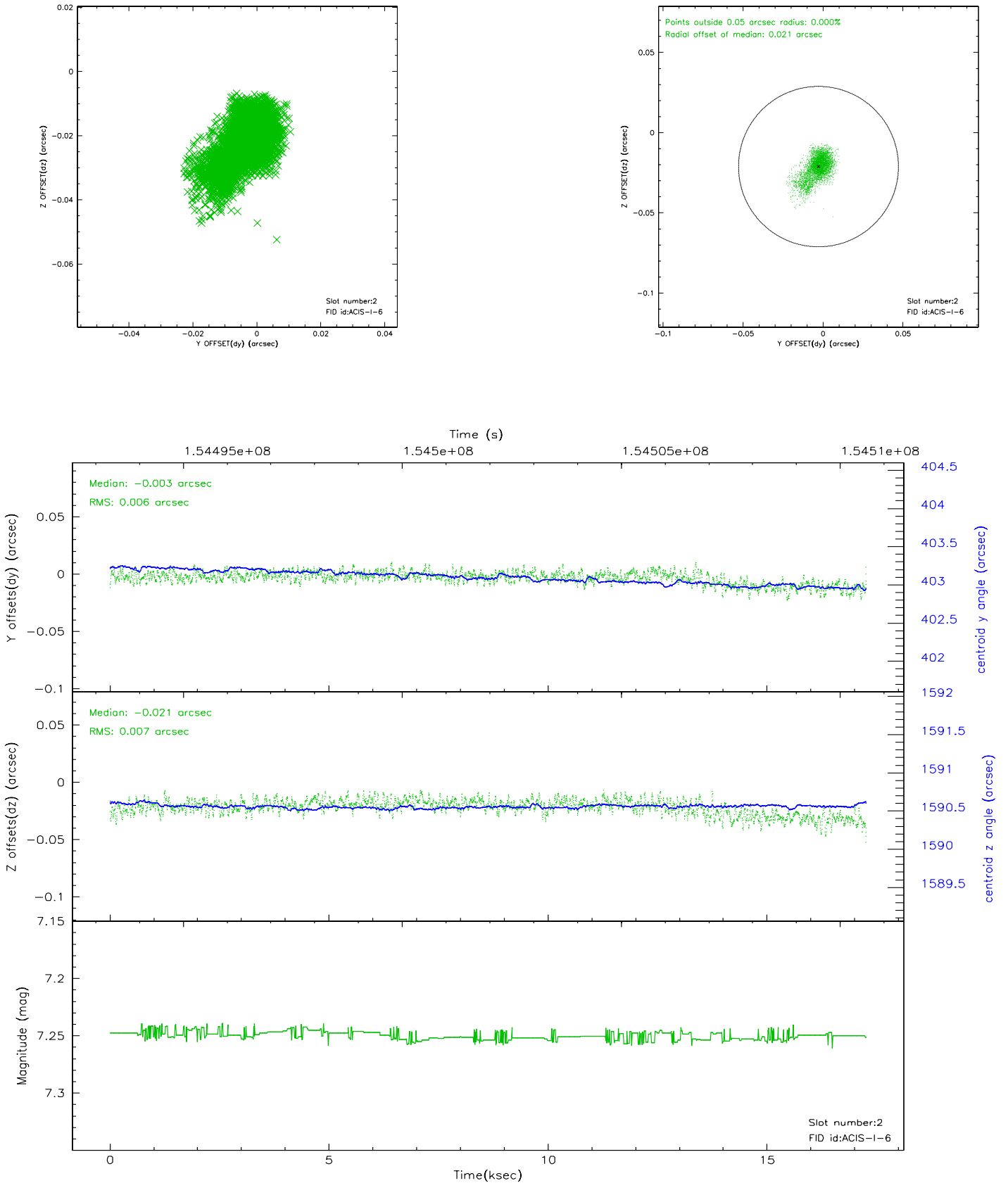
2.5.1 Slot 0



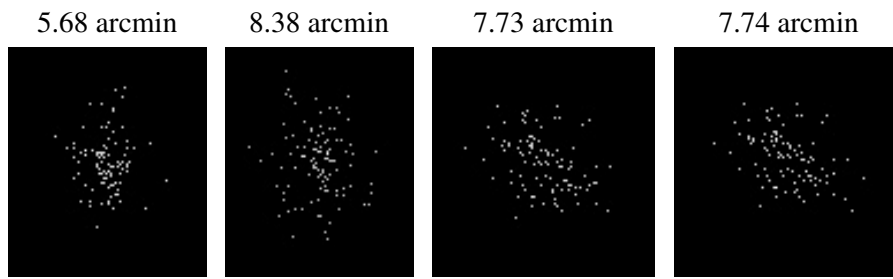
2.5.2 Slot 1



2.5.3 Slot 2



3 Point Sources



A Summary

A.1 Status

V&V Scientist	Beth Sundheim
V&V Date (YYYY-MM-DD)	2006.10.13
V&V Edition	1
V&V Disposition and Status	OK
V&V Charge Time	17.09

A.2 Comments