

V&V Reference Report

L2 ASCDS Version : 8.4.5

Observation 327 - L2 Version 4
Chandra X-Ray Center

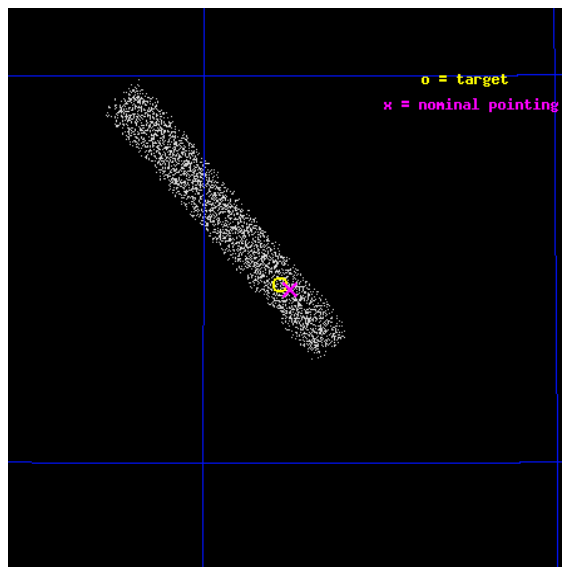
L2 Processing Date : Aug 22 2012

Contents

1	Front	2
2	OBI	3
2.1	OBI	3
2.1.1	Images	3
2.1.2	Bias	3
2.1.3	Parameters	4
2.1.4	Events	4
2.2	Compared Parameters	5
2.3	Aspect	6
2.4	Star Slots	9
2.4.1	Slot 3	9
2.4.2	Slot 4	10
2.4.3	Slot 5	11
2.4.4	Slot 6	12
2.4.5	Slot 7	13
2.5	FID Slots	14
2.5.1	Slot 0	14
2.5.2	Slot 1	15
2.5.3	Slot 2	16
A	Summary	17
A.1	Status	17
A.2	Comments	17

1 Front

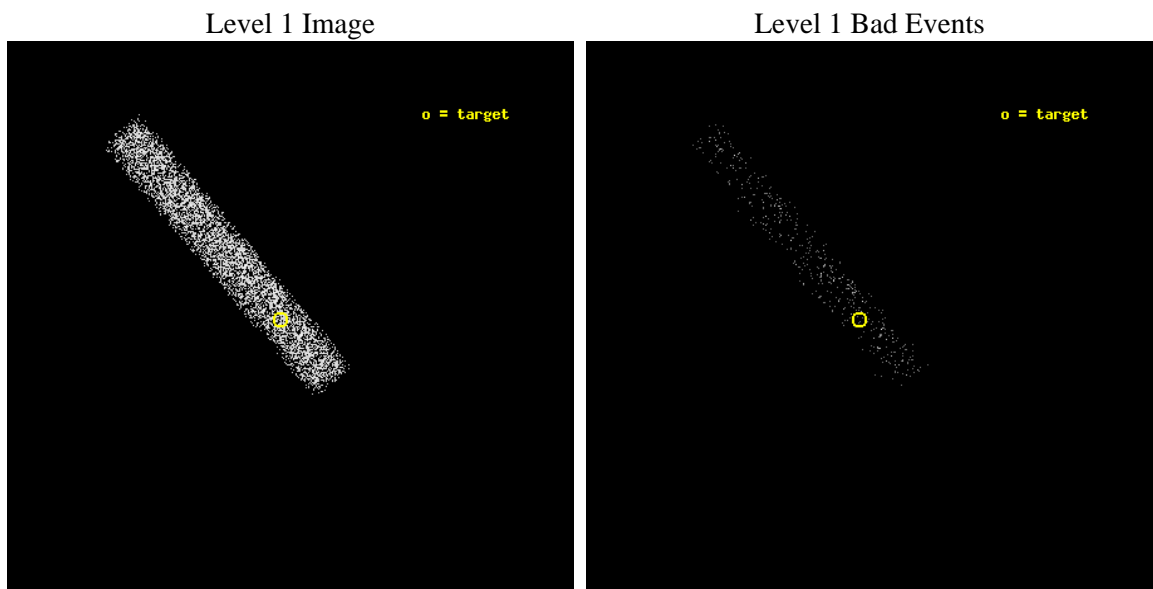
seq_num	300037	Sequence number
obs_id	327	Observation id
title	BZ CAM - A TRANSIENT SUPERSOFT X-RAY SOURCE?	Proposal title
observer	Dr. R. Di Stefano	Principal investigator
object	Mispointing	Source name
dtcycle	0	
cycle	P	events from which exps? Prim/Second/Both
ra_targ	97.391667	Observer's specified target RA [deg]
dec_targ	72.077111	Observer's specified target Dec [deg]
ra_nom	97.377600031386	Nominal RA [deg]
dec_nom	72.074795497337	Nominal Dec [deg]
roll_nom	229.5401473217	Nominal Roll [deg]
revision	4	Processing version of data
ontime	4947.1999815628	Sum of GTIs [s]
livetime	4486.8492486512	Livetime [s]
ontime7	4947.1999815628	Sum of GTIs [s]
l2events	3673	Number of level 2 events



2 OBI

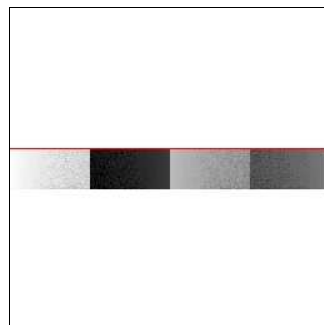
2.1 OBI

2.1.1 Images



2.1.2 Bias

Chip 7



2.1.3 Parameters

obi_num	0	Obi number	sched_exp_time	5000.000000	[s] Scheduled observation exposure time
ascdsver	8.4.5	Processing system revision	ontime	4947.1999815628	Sum of GTIs [s]
caldsver	4.5.1.1	 	ontime7	4947.1999815628	Sum of GTIs [s]
date	2012-08-22T12:52:48	Date and time of file creation	l1events	6861	Number of level 1 events
revision	4	Processing version of data			

2.1.4 Events

	ccd 7
level 1 events	6861
rejected events	3058
rejected %	44%

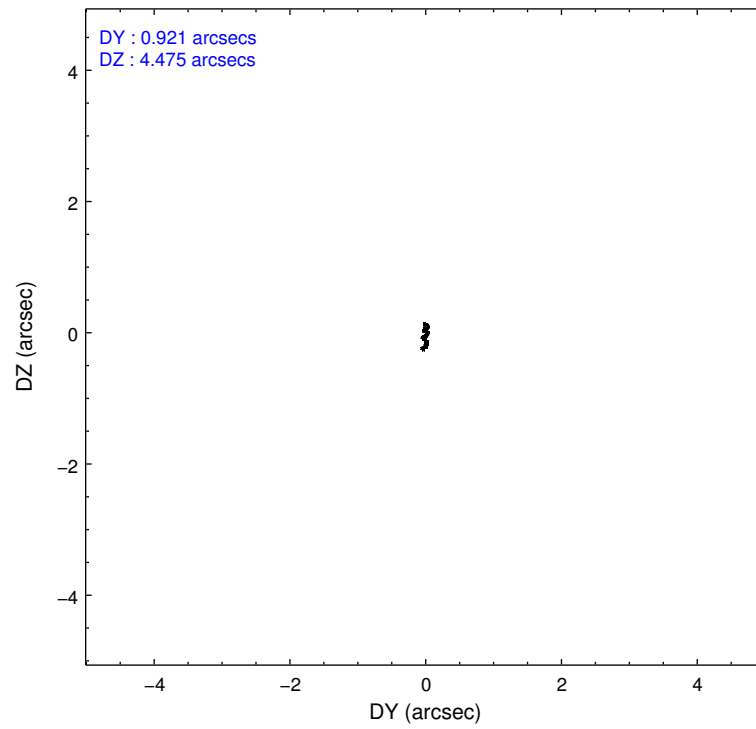
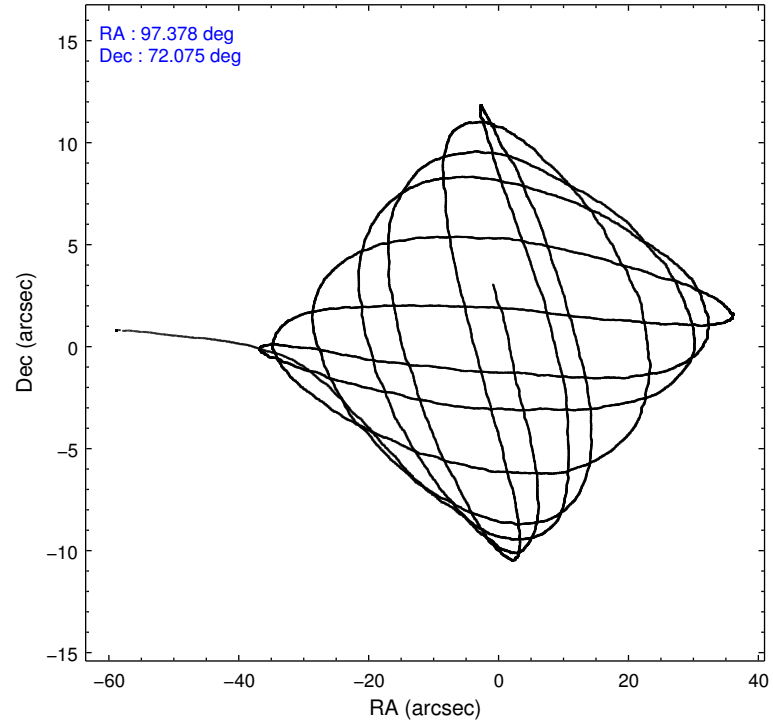
	ccd 7
grade 0 events	403
	5%
grade 1 events	15
	0%
grade 2 events	690
	10%
grade 3 events	486
	7%
grade 4 events	458
	6%
grade 5 events	555
	8%
grade 6 events	1766
	25%
grade 7 events	2488
	36%

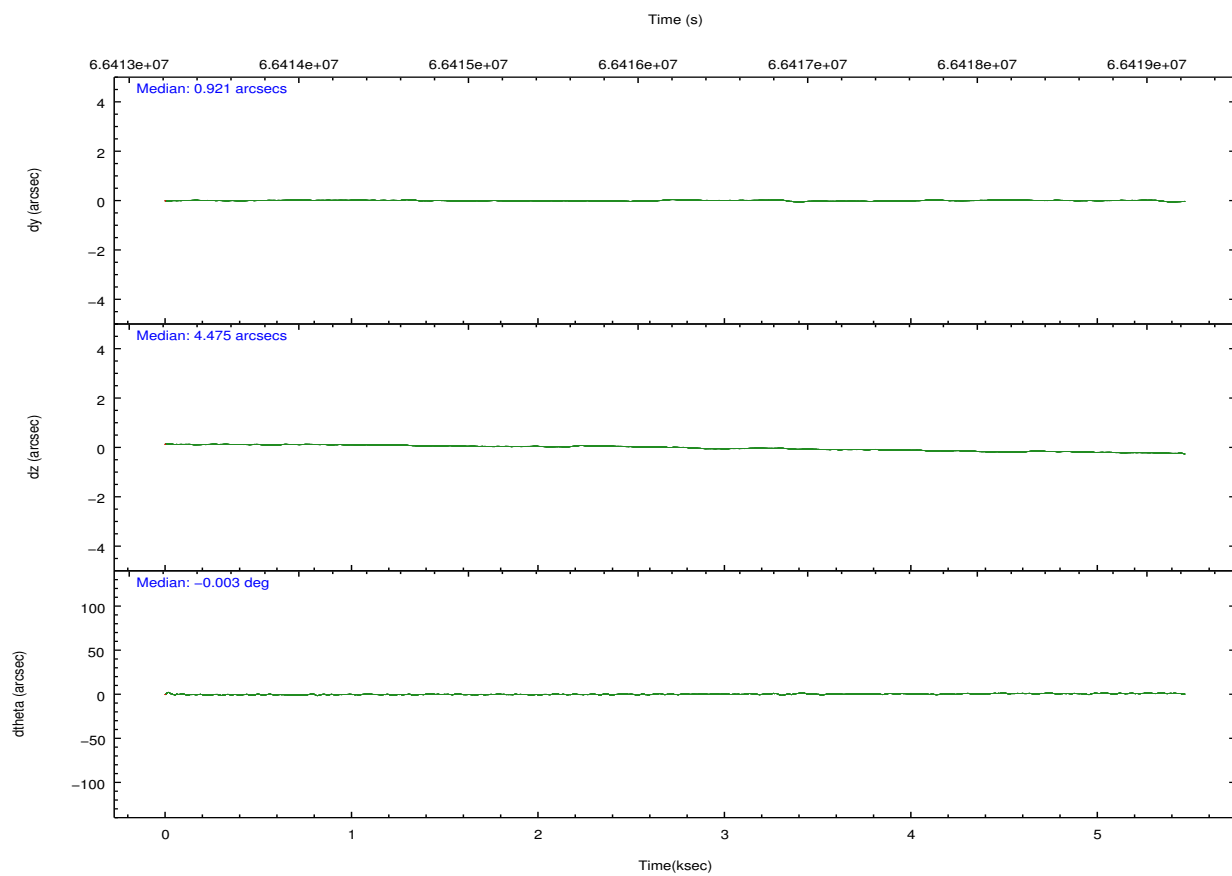
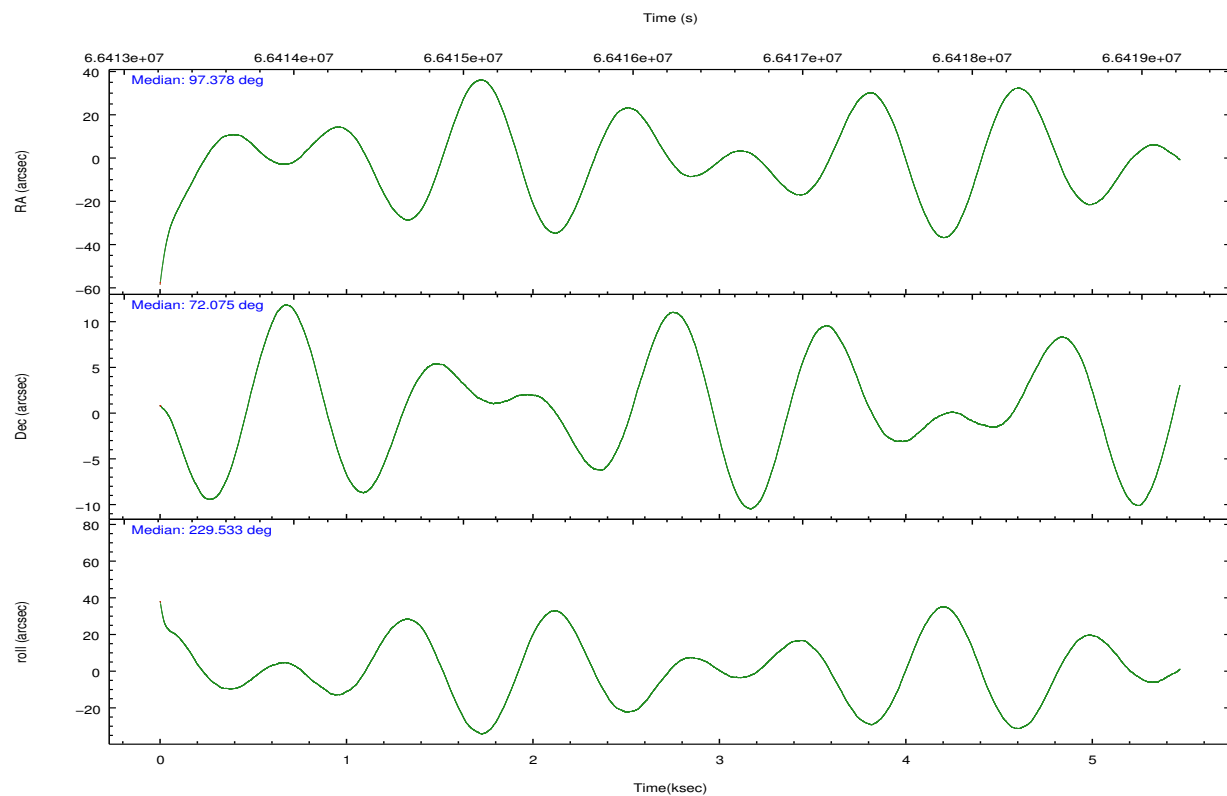
2.2 Compared Parameters

Parameter	Planned	Actual
Instrument	ACIS	ACIS
Detector	ACIS-7	ACIS-7
Grating	NONE	NONE
Data mode	FAINT	FAINT
Observation mode	POINTING	POINTING
[deg] Pointing RA	97.393939	97.37760003138624
[deg] Pointing Dec	72.101997	72.07479549733682
[deg] Pointing Roll	229.368001	229.5401473217042
[mm] SIM focus pos	-0.684267	-0.6828225247311905
[mm] SIM defocus	0	0.001444936568705701
[mm] SIM translation stage pos	-190.132523	-190.145094680475
[mm] SIM translation stage offset	0	0.01257209746719923
[s] Observation start time (MET)	66413953.184000	66412778.994297
Observation start date	2000-02-08T16:18:09	2000-02-08T15:59:38
[s] Observation end time (MET)	66418953.184000	66419465.069541
Observation end date	2000-02-08T17:41:29	2000-02-08T17:51:05
Read mode	TIMED	TIMED

Parameter	Planned	Actual
Obspar format version number	7	7
Obspar file type	PREDICTED	ACTUAL
Obspar update status	NONE	UPDATED
Number of optional ACIS chips dropped	0	0
On-chip summing requested	N	N
Subarray requested	CUSTOM	1/8
Subarray start row	447	447
Subarray row count	128	128
Alternating exposures requested	N	N
[s] Primary exposure time	0.000000	0.4

2.3 Aspect



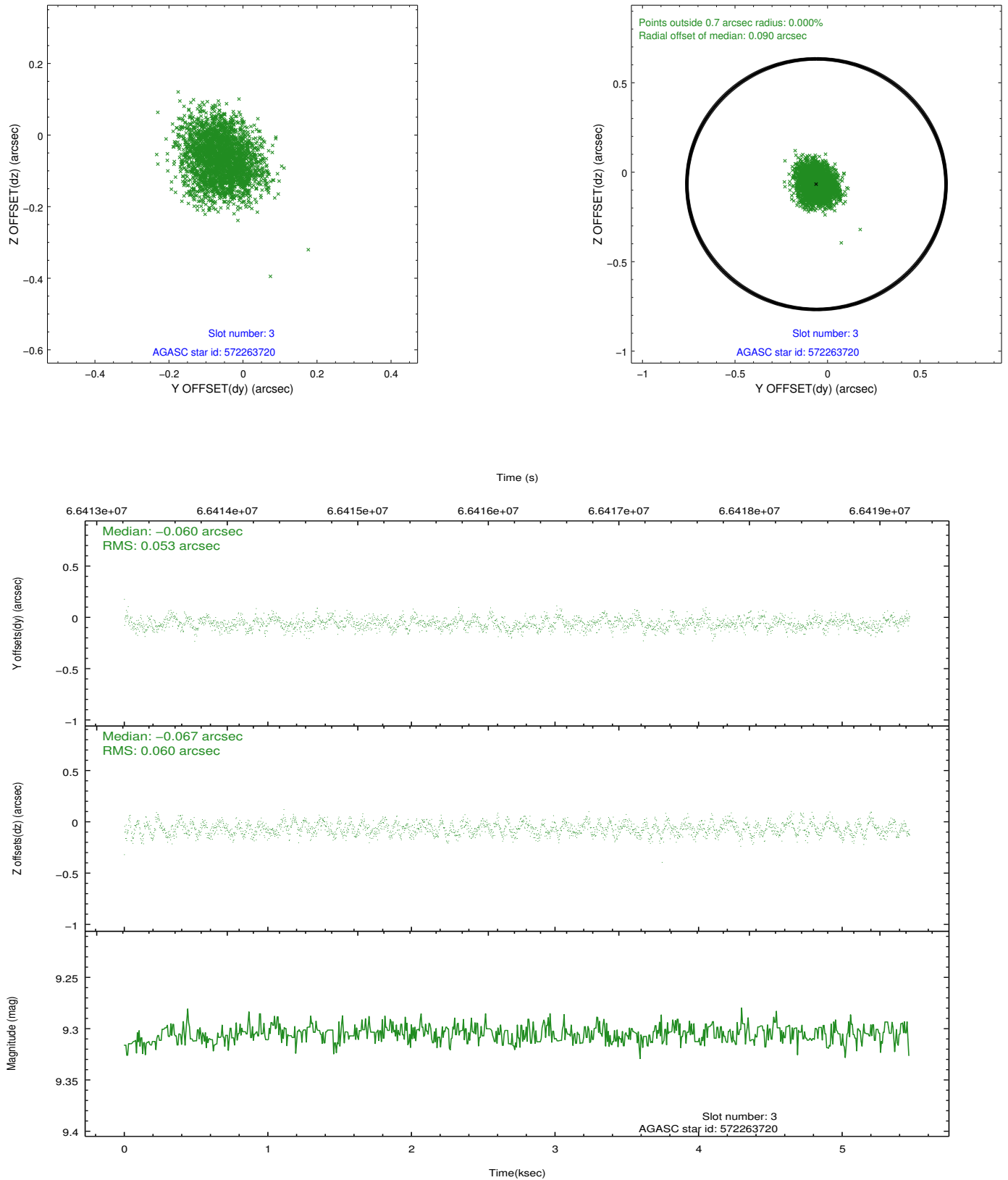


Slot Statistics

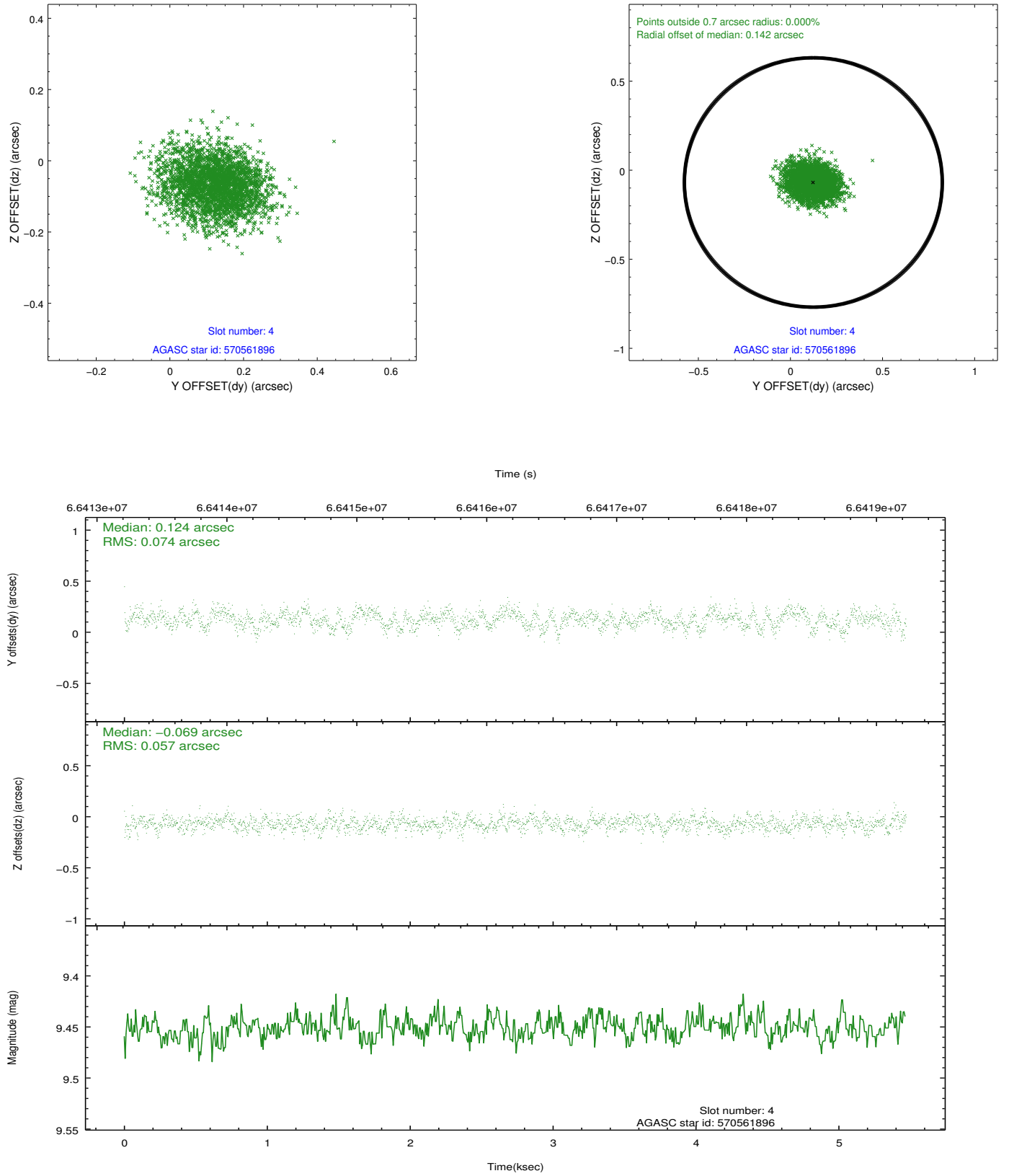
slot	status	id	mag	n_pts	med_dy	med_dz	dr1	dr2	ra	dec	mean_y	mean_z
0	FID	ACIS-S-2	7.11	1335	-0.014	-0.007	0.008	0.012	0.000000	0.000000	-753.55	-1725.44
1	FID	ACIS-S-4	7.21	1335	-0.000	0.009	0.006	0.010	0.000000	0.000000	2159.28	181.88
2	FID	ACIS-S-5	7.23	1335	-0.016	0.007	0.007	0.013	0.000000	0.000000	-1804.94	176.87
3	GUIDE	572263720	9.31	2667	-0.060	-0.067	0.087	0.134	97.126879	72.721130	-1505.69	-1668.96
4	GUIDE	570561896	9.45	2668	0.124	-0.069	0.100	0.160	94.981661	71.992393	2006.48	-1815.58
5	GUIDE	572266232	9.86	2668	-0.080	0.040	0.090	0.145	97.823245	72.548021	-1520.67	-695.88
6	GUIDE	572262528	9.87	2669	0.052	0.098	0.105	0.176	98.181490	71.779717	298.42	1424.24
7	GUIDE	572260512	9.86	2664	-0.036	-0.003	0.103	0.160	99.171942	71.821890	-557.20	2153.05

2.4 Star Slots

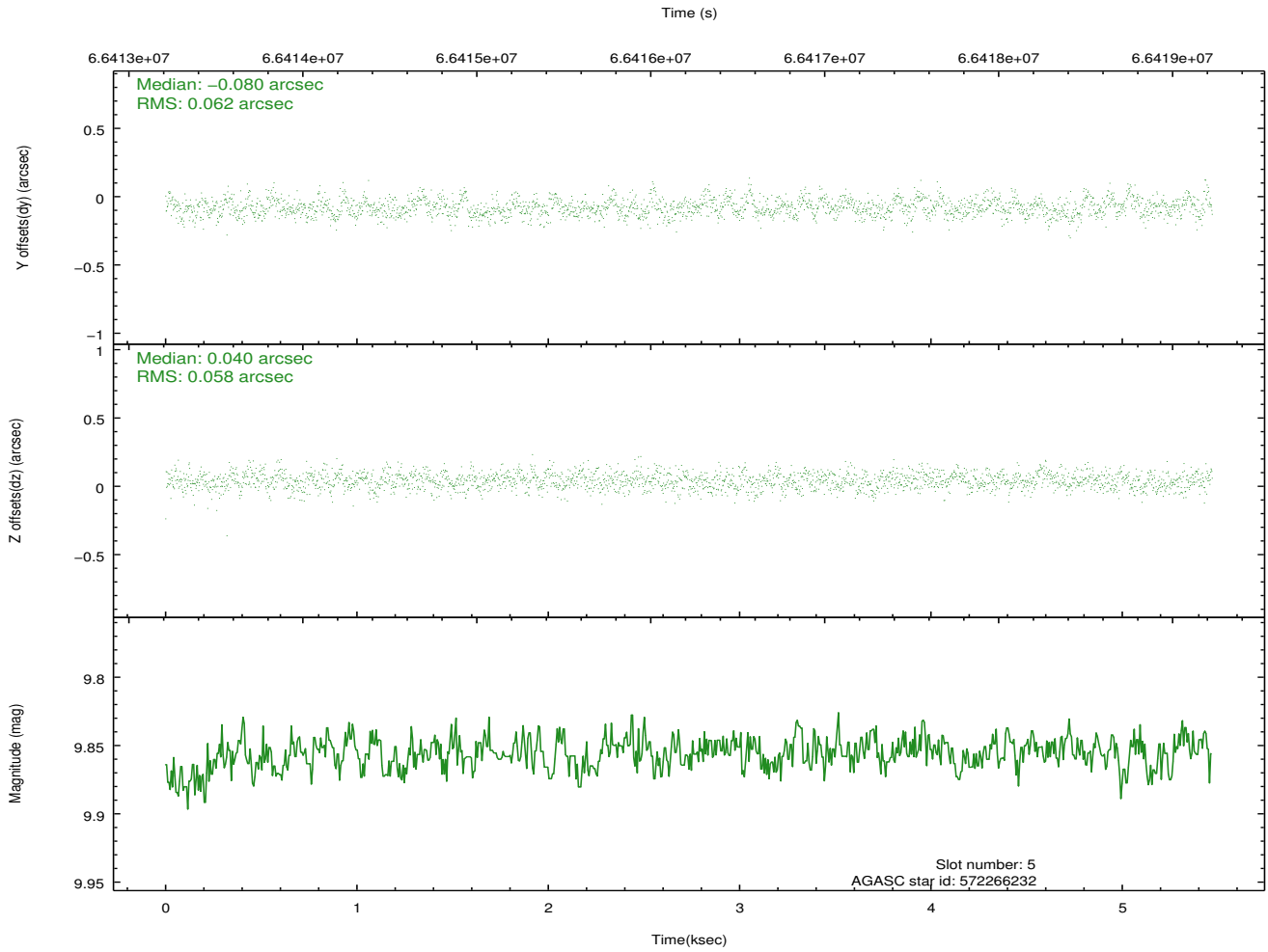
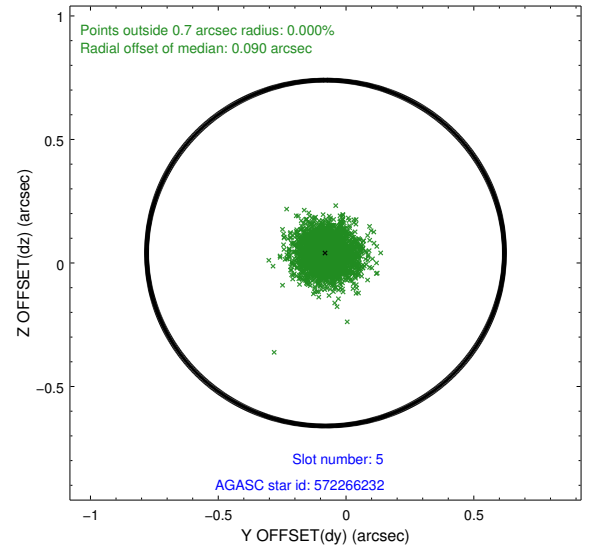
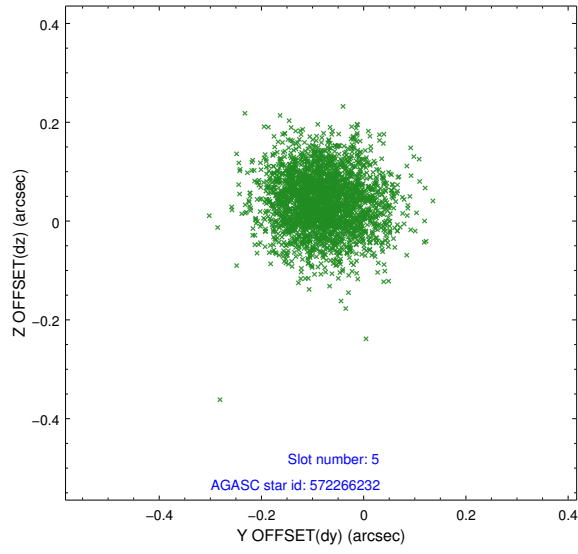
2.4.1 Slot 3



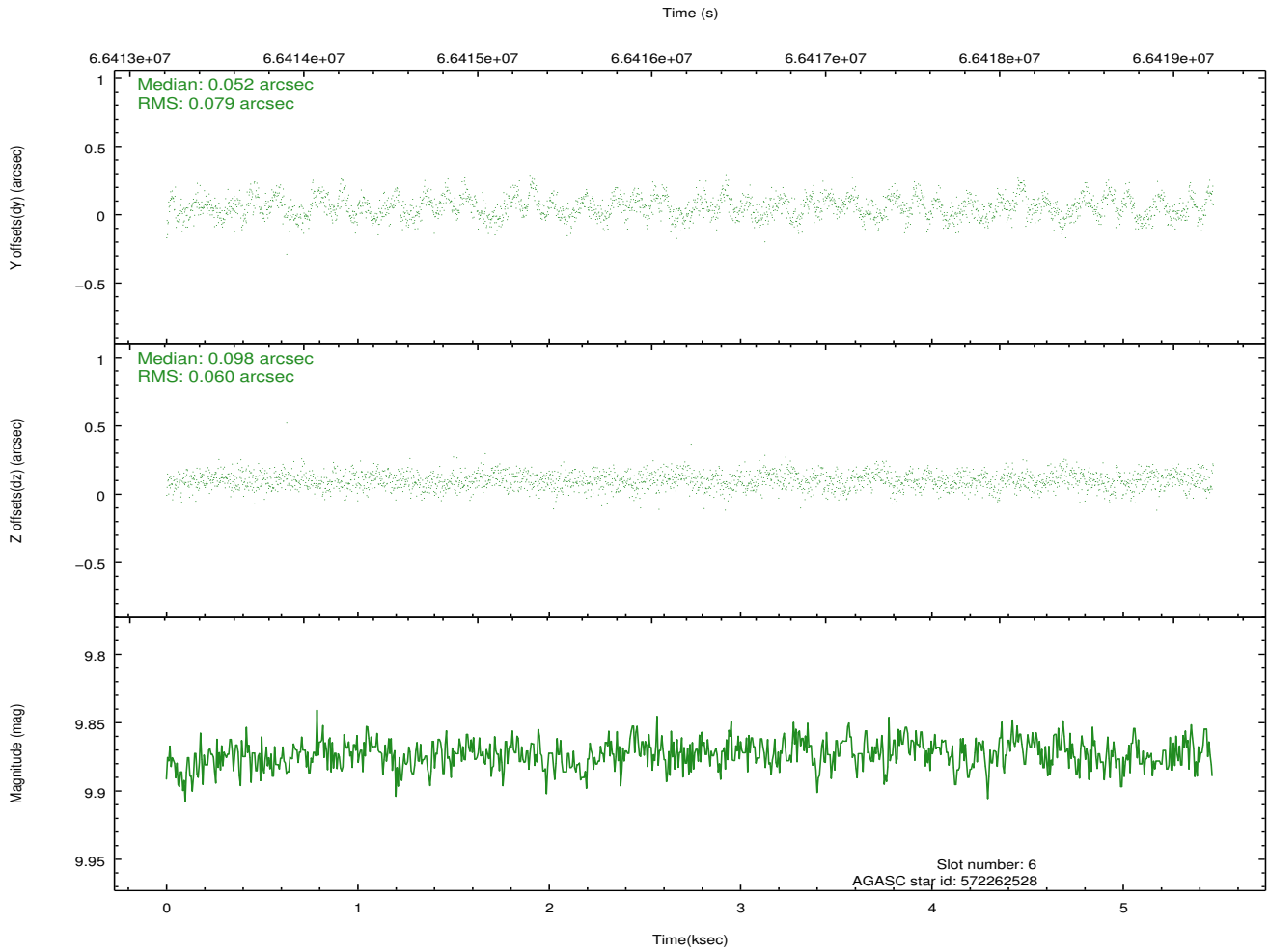
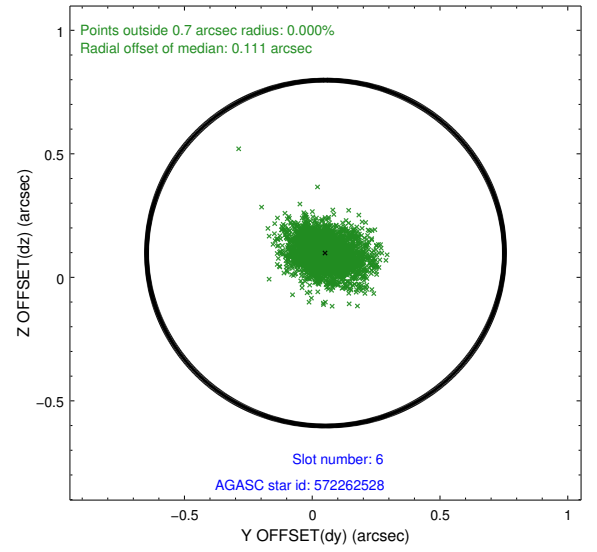
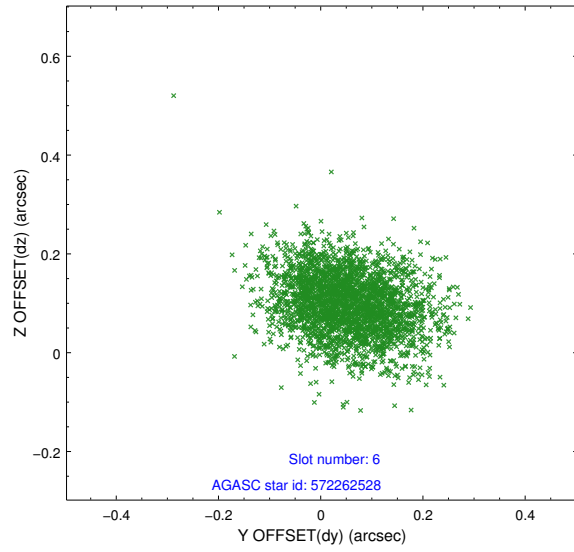
2.4.2 Slot 4



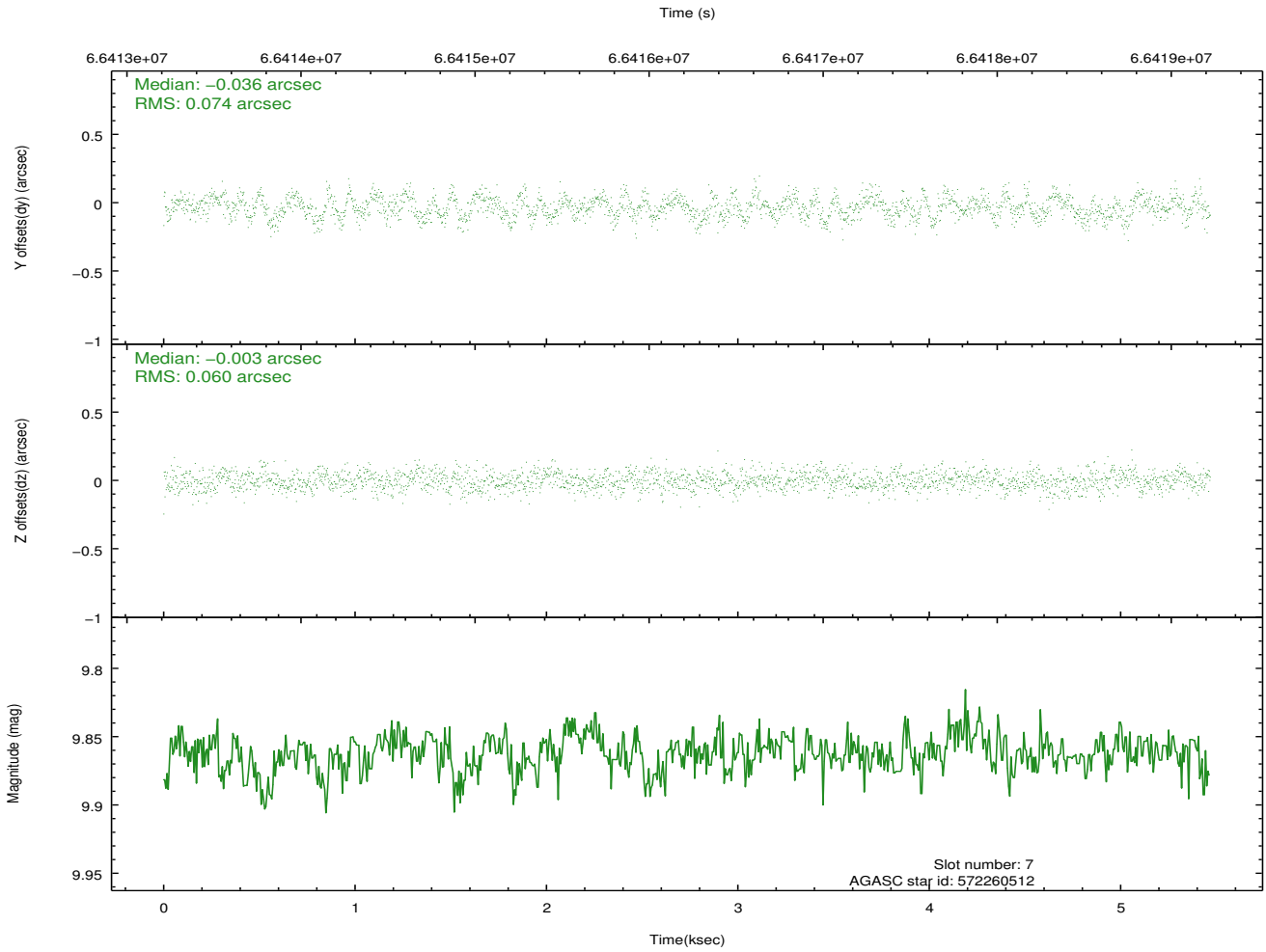
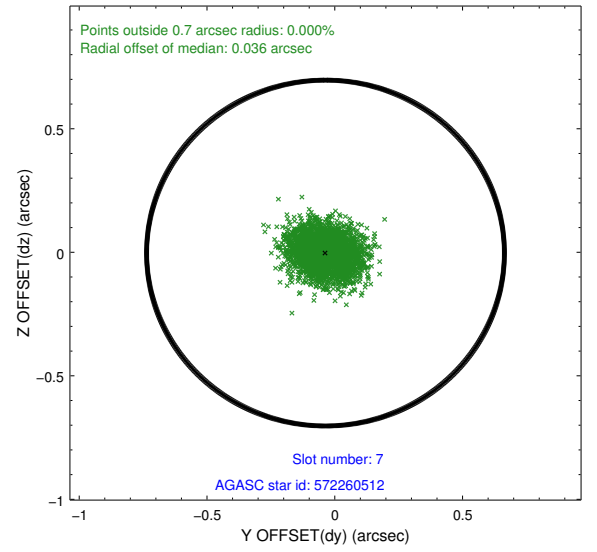
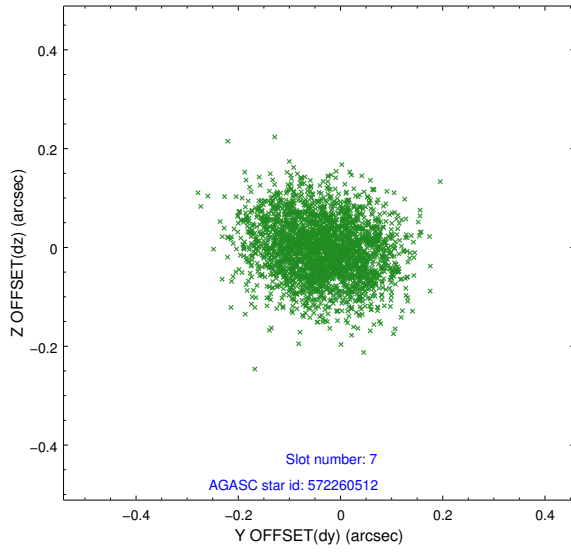
2.4.3 Slot 5



2.4.4 Slot 6

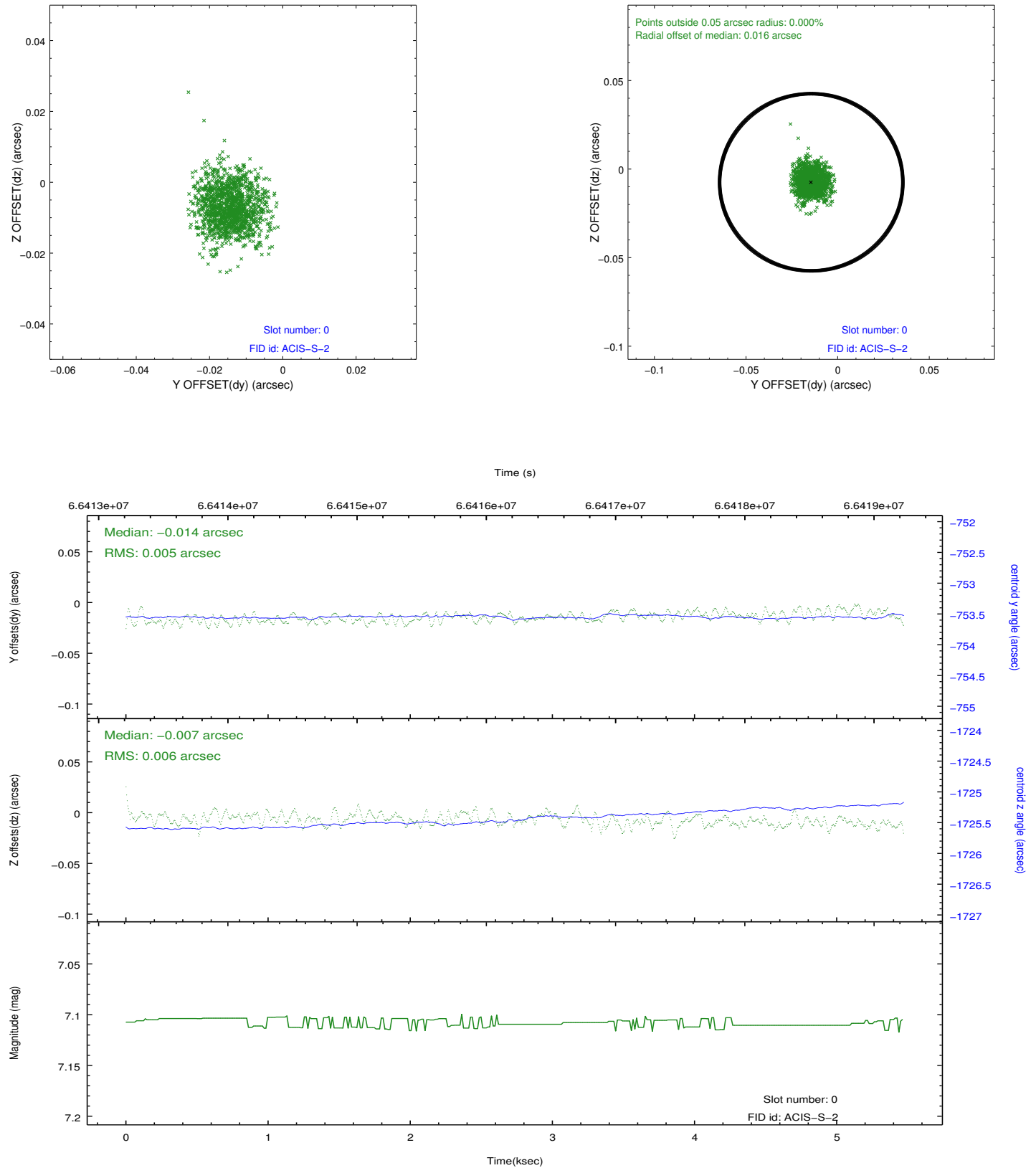


2.4.5 Slot 7

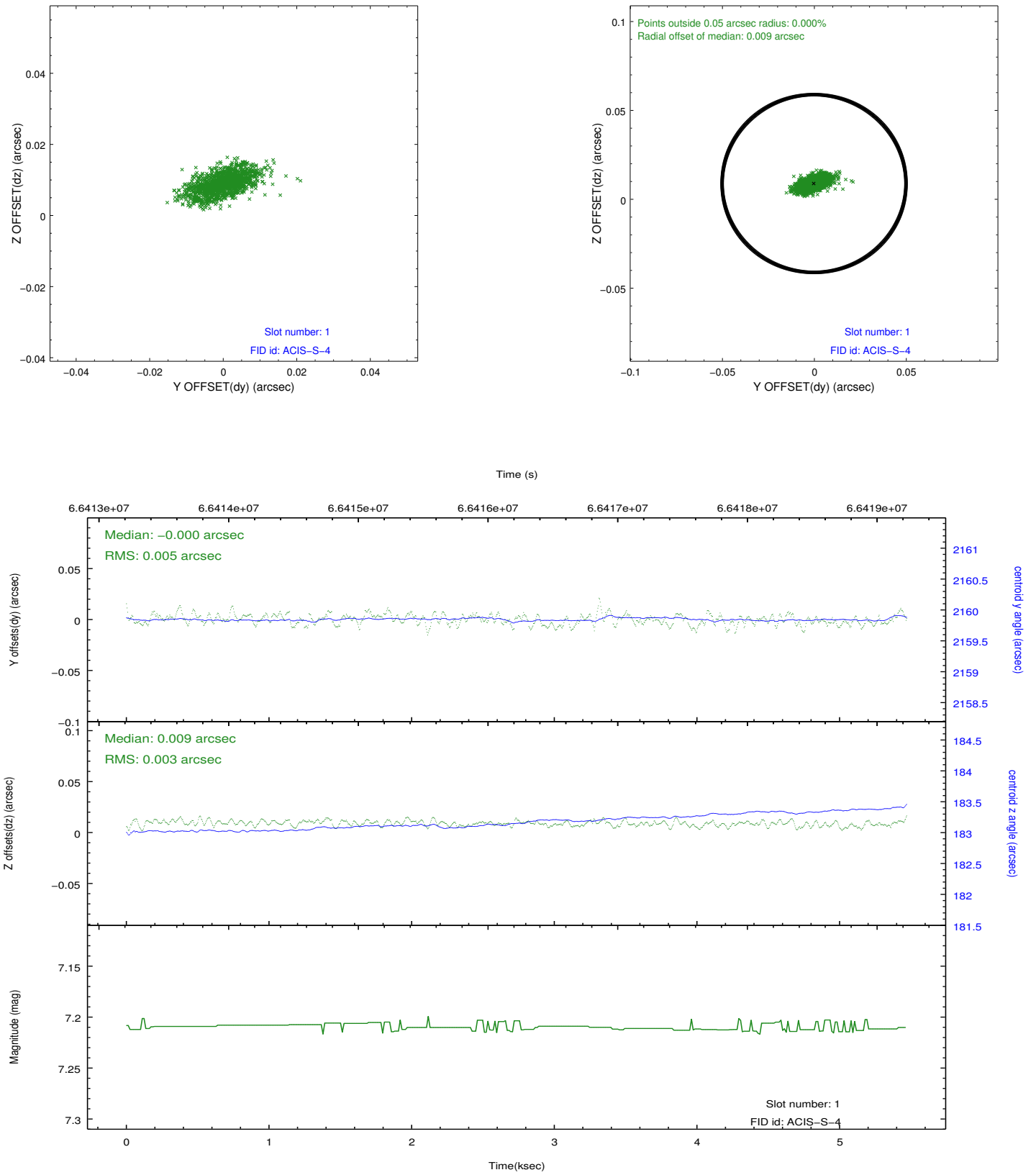


2.5 FID Slots

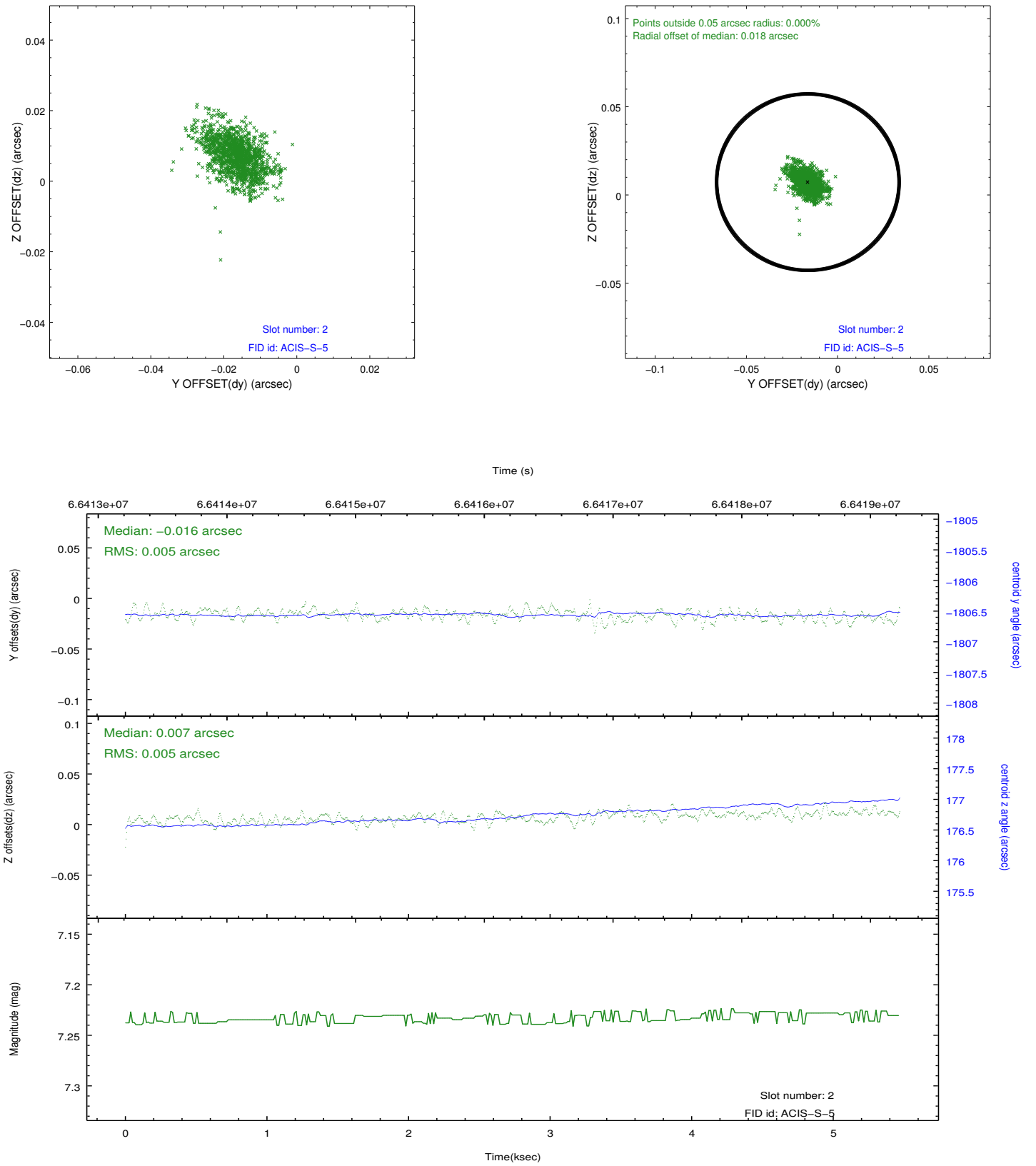
2.5.1 Slot 0



2.5.2 Slot 1



2.5.3 Slot 2



A Summary

A.1 Status

V&V Scientist	Jen Lauer
V&V Date (YYYY-MM-DD)	2012.08.23
V&V Edition	1
V&V Disposition and Status	OK
V&V Charge Time	4.947

A.2 Comments