

# V&V Reference Report

## L2 ASCDS Version : 8.4.5

Observation 3227 - L2 Version 3  
Chandra X-Ray Center

L2 Processing Date : Oct 4 2012

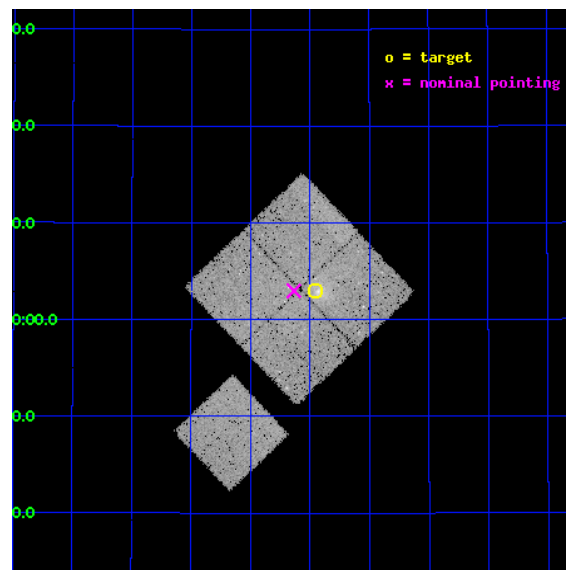
## Contents

<b>1</b>	<b>Front</b>	<b>2</b>
<b>2</b>	<b>OBI</b>	<b>3</b>
2.1	OBI . . . . .	3
2.1.1	Images . . . . .	3
2.1.2	Bias . . . . .	3
2.1.3	Parameters . . . . .	4
2.1.4	Events . . . . .	4
2.2	Compared Parameters . . . . .	5
2.3	Aspect . . . . .	6
2.4	Star Slots . . . . .	9
2.4.1	Slot 3 . . . . .	9
2.4.2	Slot 4 . . . . .	10
2.4.3	Slot 5 . . . . .	11
2.4.4	Slot 6 . . . . .	12
2.4.5	Slot 7 . . . . .	13
2.5	FID Slots . . . . .	14
2.5.1	Slot 0 . . . . .	14
2.5.2	Slot 1 . . . . .	15
2.5.3	Slot 2 . . . . .	16
<b>A</b>	<b>Summary</b>	<b>17</b>
A.1	Status . . . . .	17
A.2	Comments . . . . .	17



# 1 Front

seq_num	800227	Sequence number
obs_id	3227	Observation id
title	A SEARCH FOR SMALL-SCALE STRUCTURE IN THE RASSCALs GALAXY GROUPS	P
observer	DR. MARGARET GELLER	Principal investigator
object	NRGB045	Source name
dtcycle	0	&#160
cycle	P	events from which exps? Prim/Second/Both
ra_targ	143.362917	Observer's specified target RA [deg]
dec_targ	34.050556	Observer's specified target Dec [deg]
ra_nom	143.40894176362	Nominal RA [deg]
dec_nom	34.049630360863	Nominal Dec [deg]
roll_nom	226.4696569369	Nominal Roll [deg]
revision	3	Processing version of data
ontime	34775.799933136	Sum of GTIs [s]
livetime	34321.428505438	Livetime [s]
ontime0	34775.799933136	Sum of GTIs [s]
ontime1	34772.658913046	Sum of GTIs [s]
ontime2	34766.376992464	Sum of GTIs [s]
ontime3	34769.517962694	Sum of GTIs [s]
ontime6	34772.658942968	Sum of GTIs [s]
l2events	84794	Number of level 2 events

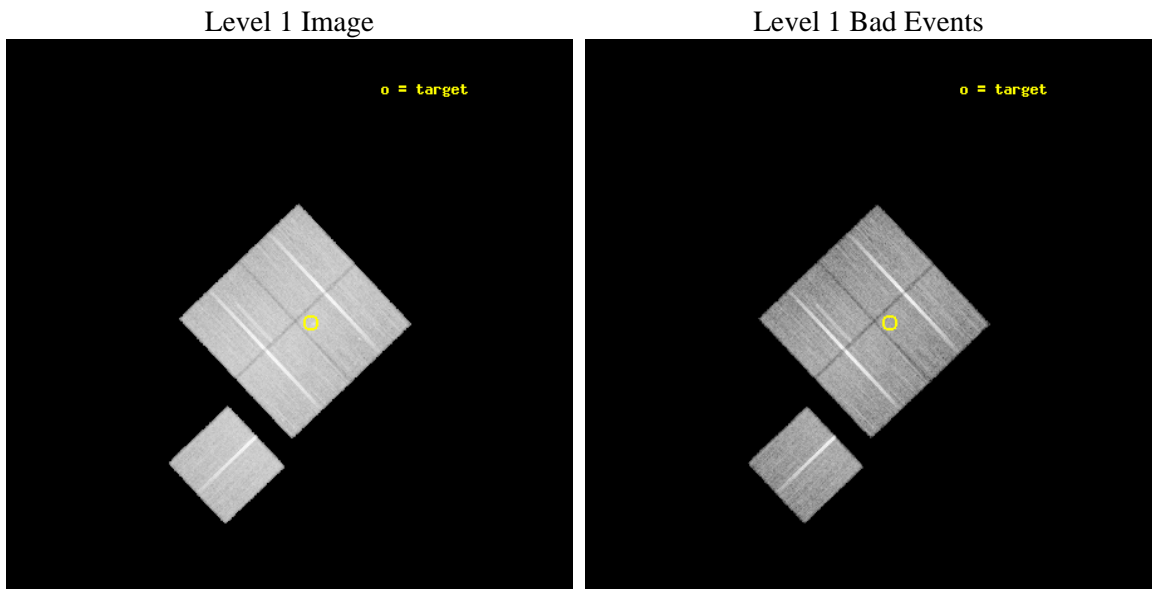




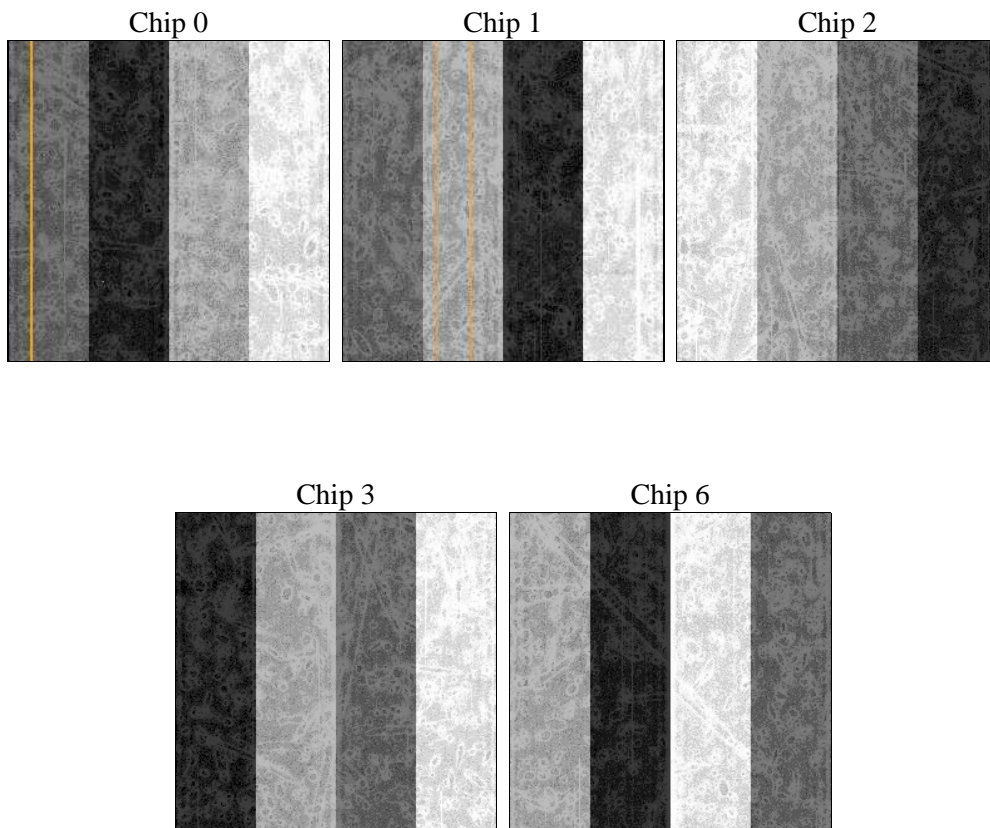
## 2 OBI

### 2.1 OBI

#### 2.1.1 Images



#### 2.1.2 Bias





### 2.1.3 Parameters

obi_num	1	Obi number	sched_exp_time	35000.000000	[s] Scheduled observation exposure time
ascdsver	8.4.5	Processing system revision	ontime	34775.799933136	Sum of GTIs [s]
caldsver	4.5.2	&#160	ontime0	34775.799933136	Sum of GTIs [s]
date	2012-10-04T01:46:14	Date and time of file creation	ontime1	34772.658913046	Sum of GTIs [s]
revision	3	Processing version of data	ontime2	34766.376992464	Sum of GTIs [s]
			ontime3	34769.517962694	Sum of GTIs [s]
			ontime6	34772.658942968	Sum of GTIs [s]
			l1events	998339	Number of level 1 events

### 2.1.4 Events

	ccd 0	ccd 1	ccd 2	ccd 3	ccd 6
level 1 events	192051	188830	212725	203342	201391
rejected events	169225	167169	192807	184552	181852
rejected %	88%	88%	90%	90%	90%

	ccd 0	ccd 1	ccd 2	ccd 3	ccd 6
grade 0 events	9874	8156	7490	7042	6683
	5%	4%	3%	3%	3%
grade 1 events	117	97	88	91	85
	0%	0%	0%	0%	0%
grade 2 events	4665	4318	4413	3882	4138
	2%	2%	2%	1%	2%
grade 3 events	2294	2550	2167	2102	2247
	1%	1%	1%	1%	1%
grade 4 events	2143	2505	2188	2016	2199
	1%	1%	1%	0%	1%
grade 5 events	6487	7047	5867	6831	7230
	3%	3%	2%	3%	3%
grade 6 events	3853	4134	3664	3749	4276
	2%	2%	1%	1%	2%
grade 7 events	162618	160023	186848	177629	174533
	84%	84%	87%	87%	86%

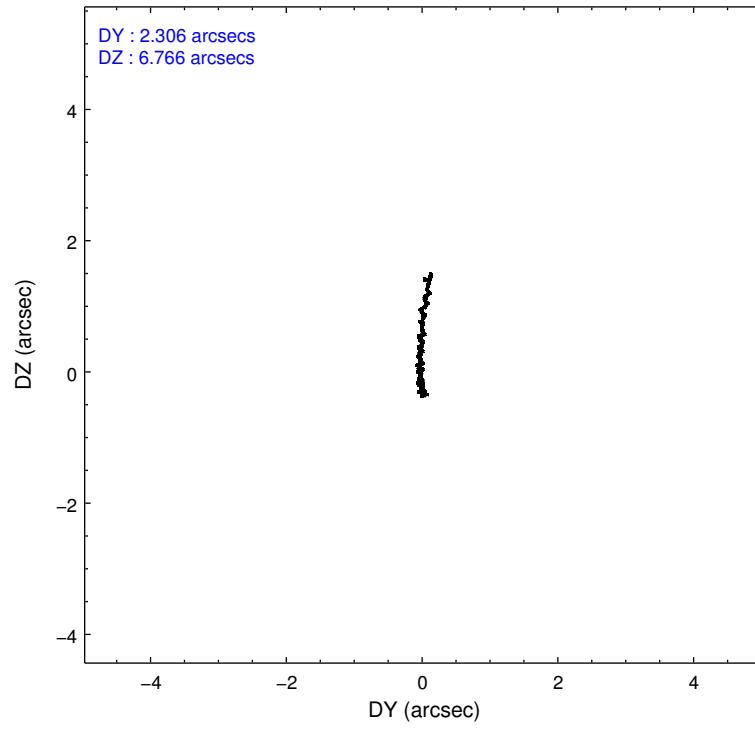
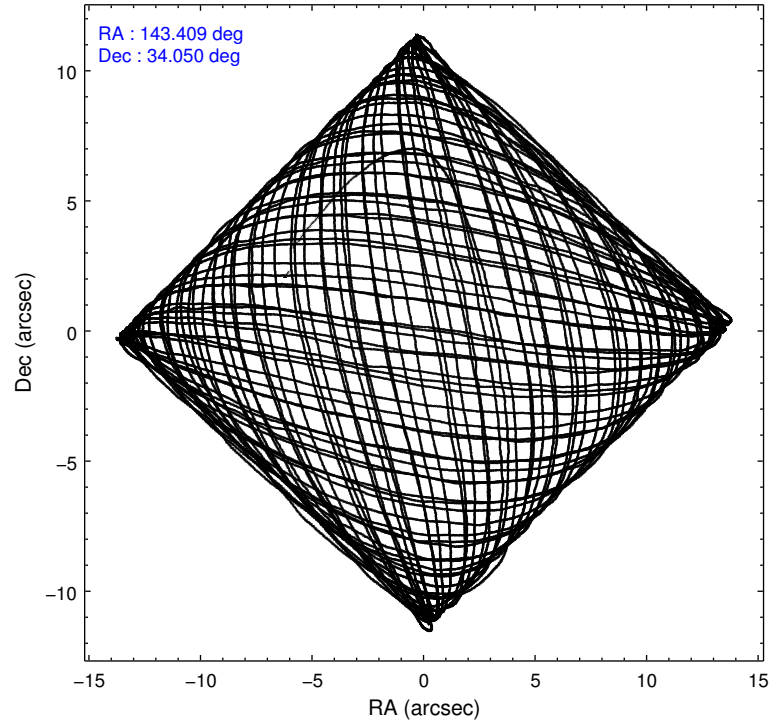


## 2.2 Compared Parameters

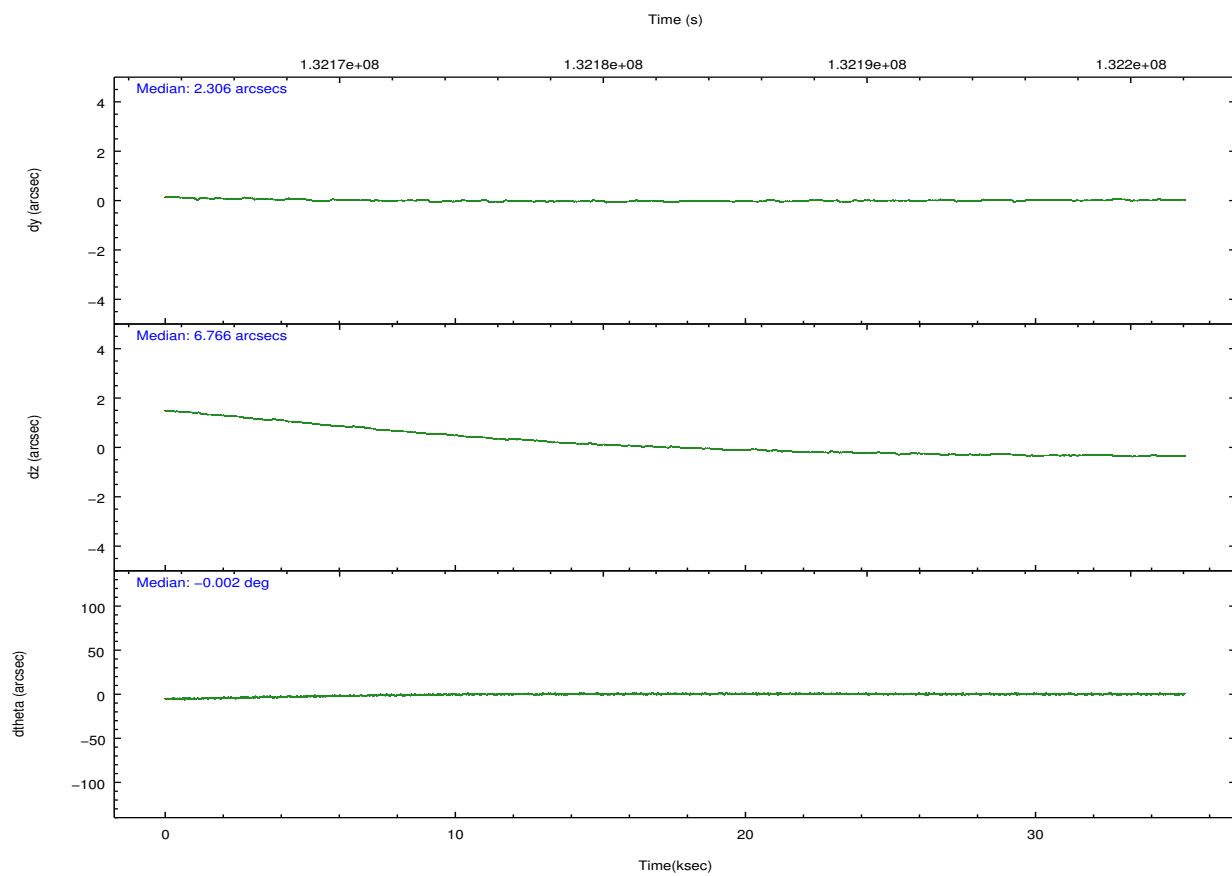
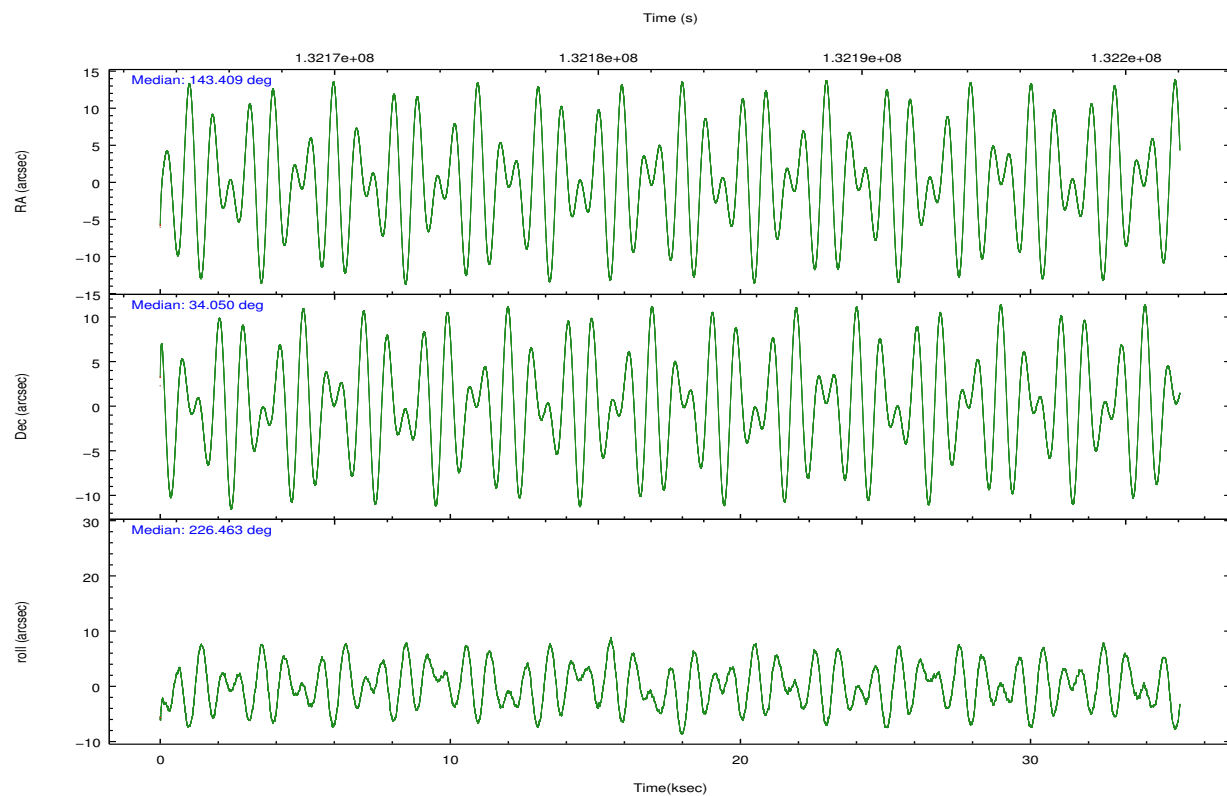
Parameter	Planned	Actual	Parameter	Planned	Actual
Instrument	ACIS	ACIS	Obspar format version number	7	7
Detector	ACIS-01236	ACIS-01236	Obspar file type	PREDICTED	ACTUAL
Grating	NONE	NONE	Obspar update status	NONE	UPDATED
Data mode	VFAINT	VFAINT	Number of optional ACIS chips dropped	0	0
Observation mode	POINTING	POINTING	On-chip summing requested	N	N
[deg] Pointing RA	143.416581	143.4089417636179	Subarray requested	NONE	NONE
[deg] Pointing Dec	34.076293	34.04963036086259	Alternating exposures requested	N	N
[deg] Pointing Roll	226.256690	226.4696569369004	[s] Primary exposure time	0.000000	3.1
[mm] SIM focus pos	-0.782348	-0.7809083437167272			
[mm] SIM defocus	0	0.001439871863259334			
[mm] SIM translation stage pos	-233.592463	-233.5874344608287			
[mm] SIM translation stage offset	0	-0.005018542100998502			
[s] Observation start time (MET)	132165293.184000	132164172.5386			
Observation start date	2002-03-10T16:33:49	2002-03-10T16:16:12			
[s] Observation end time (MET)	132200293.184000	132200551.84008			
Observation end date	2002-03-11T02:17:09	2002-03-11T02:22:31			
Read mode	TIMED	TIMED			



## 2.3 Aspect









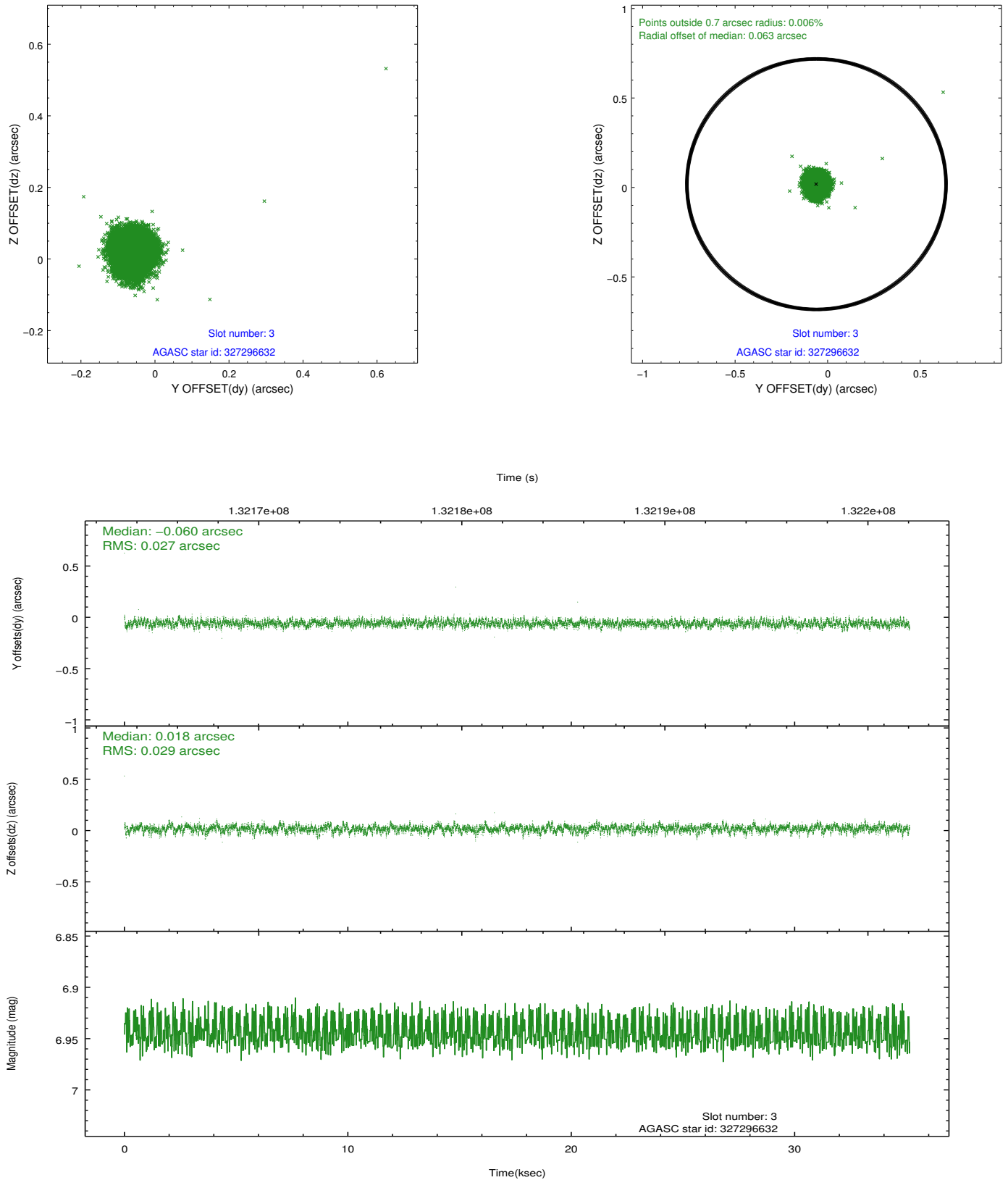
### Slot Statistics

slot	status	id	mag	n_pts	med_dy	med_dz	dr1	dr2	ra	dec	mean_y	mean_z
0	FID	ACIS-I-1	7.25	8574	-0.052	-0.079	0.010	0.020	0.000000	0.000000	937.45	-830.44
1	FID	ACIS-I-3	7.45	8574	-0.001	0.167	0.009	0.020	0.000000	0.000000	55.02	-963.52
2	FID	ACIS-I-5	7.23	8574	-0.039	-0.013	0.010	0.038	0.000000	0.000000	-1810.72	1067.07
3	GUIDE	327296632	6.95	17148	-0.060	0.018	0.041	0.067	142.712336	34.210933	1094.83	-1854.52
4	GUIDE	327289264	7.81	17142	-0.095	-0.107	0.055	0.091	143.561363	34.811163	-2206.95	-1520.61
5	GUIDE	328211000	8.50	17040	-0.063	0.087	0.064	0.104	144.064758	34.017178	-1188.04	1540.29
6	GUIDE	327290976	9.44	17142	0.010	0.010	0.099	0.160	142.884152	34.565457	-183.32	-2360.51
7	GUIDE	327295504	9.41	17139	0.206	-0.002	0.079	0.130	143.297254	33.917095	660.86	138.70



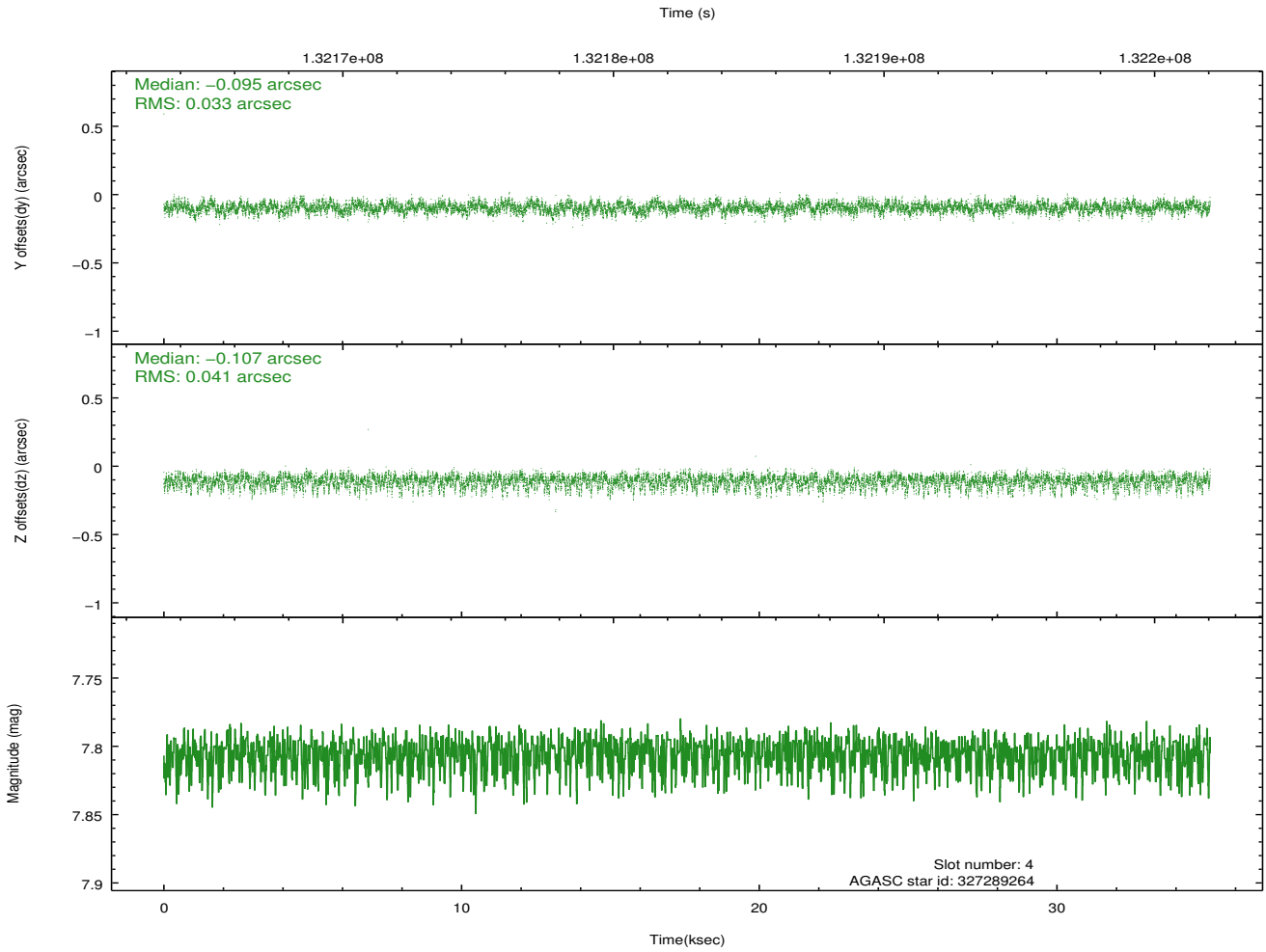
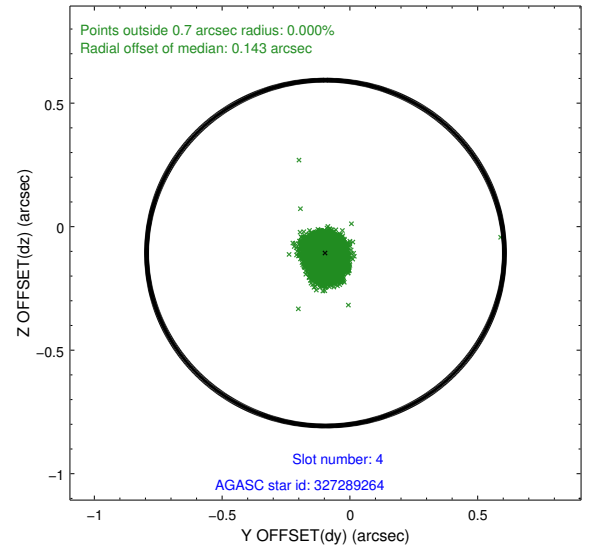
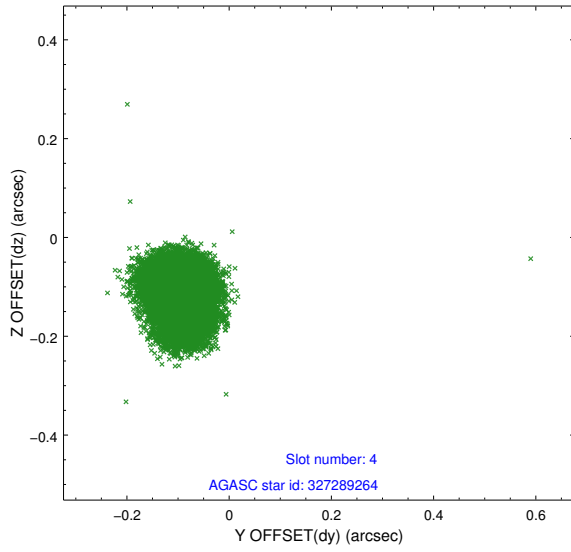
## 2.4 Star Slots

### 2.4.1 Slot 3



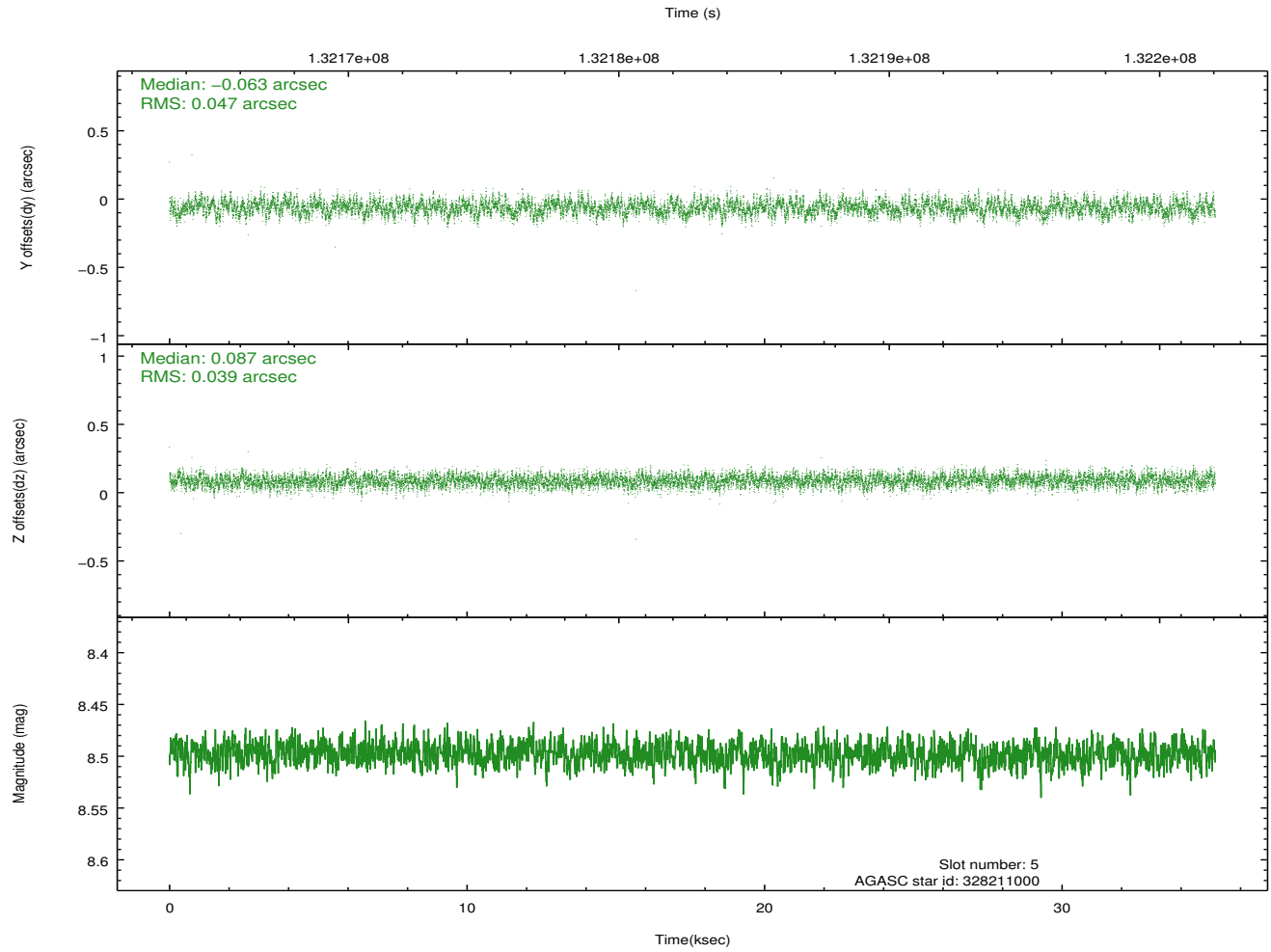
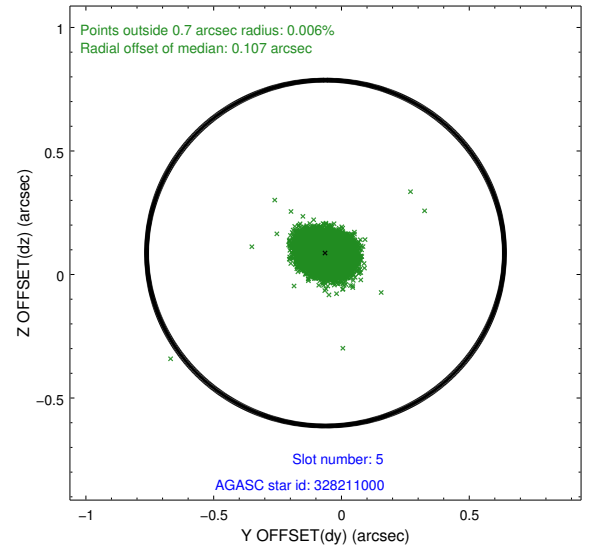
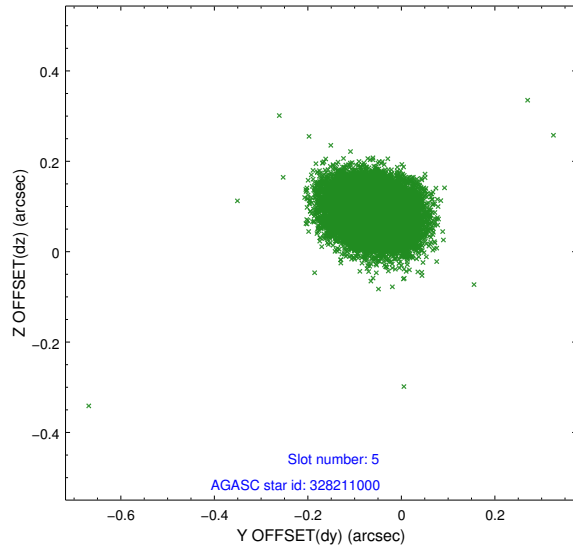


## 2.4.2 Slot 4



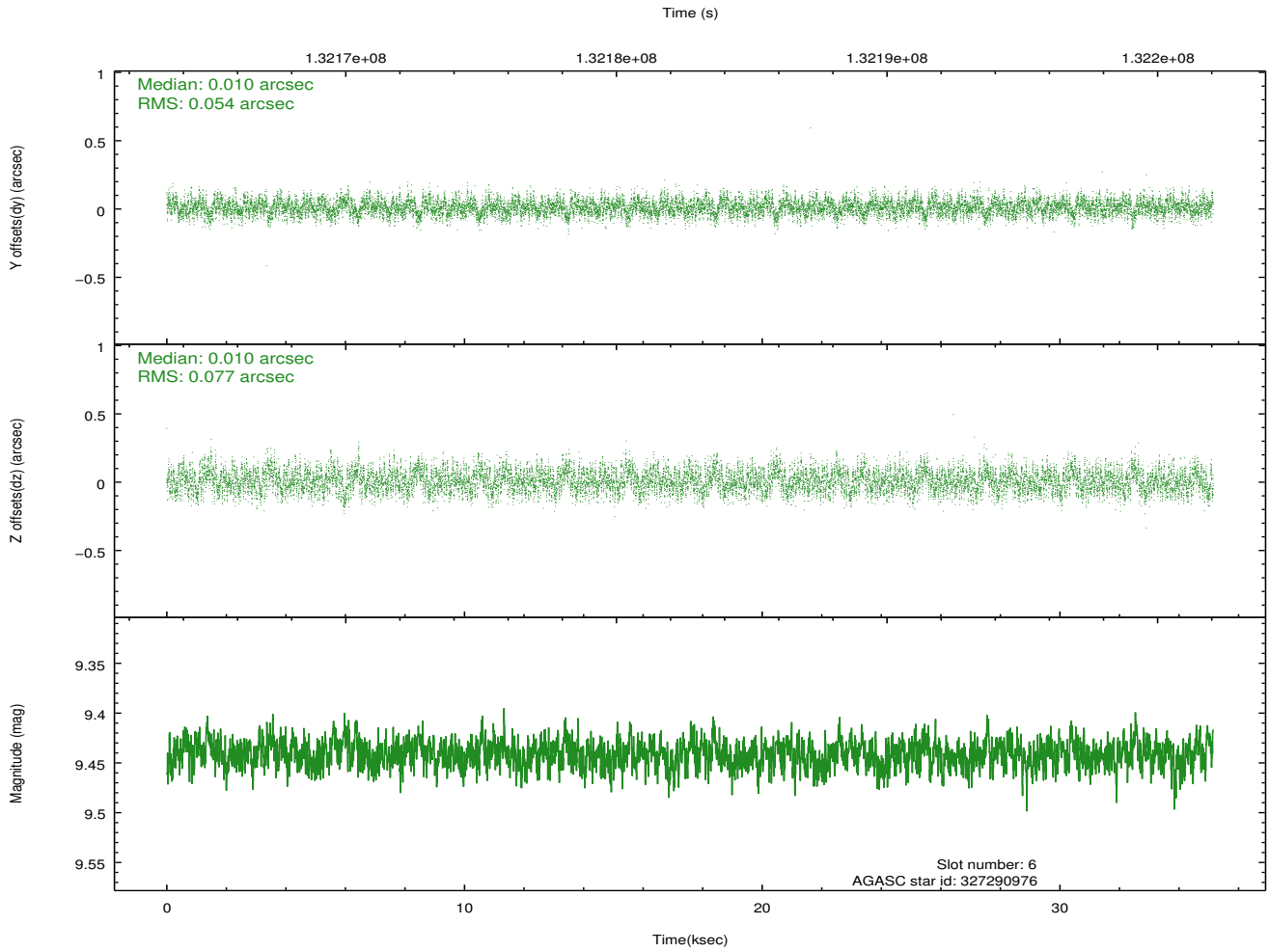
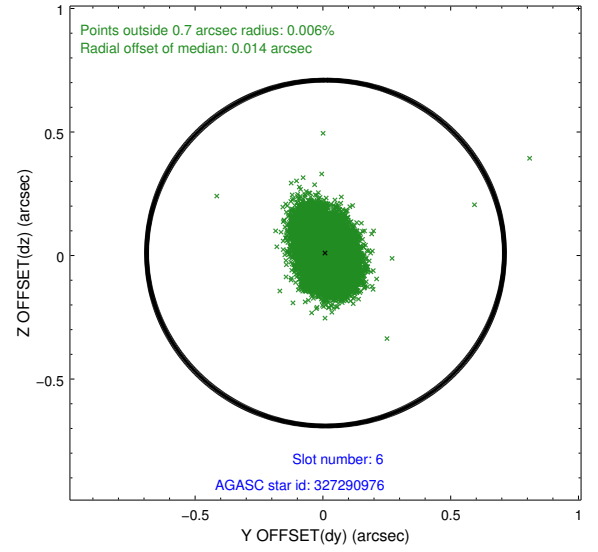
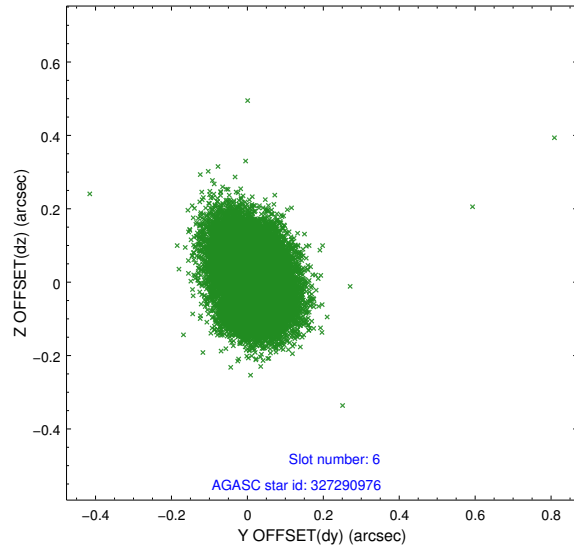


### 2.4.3 Slot 5



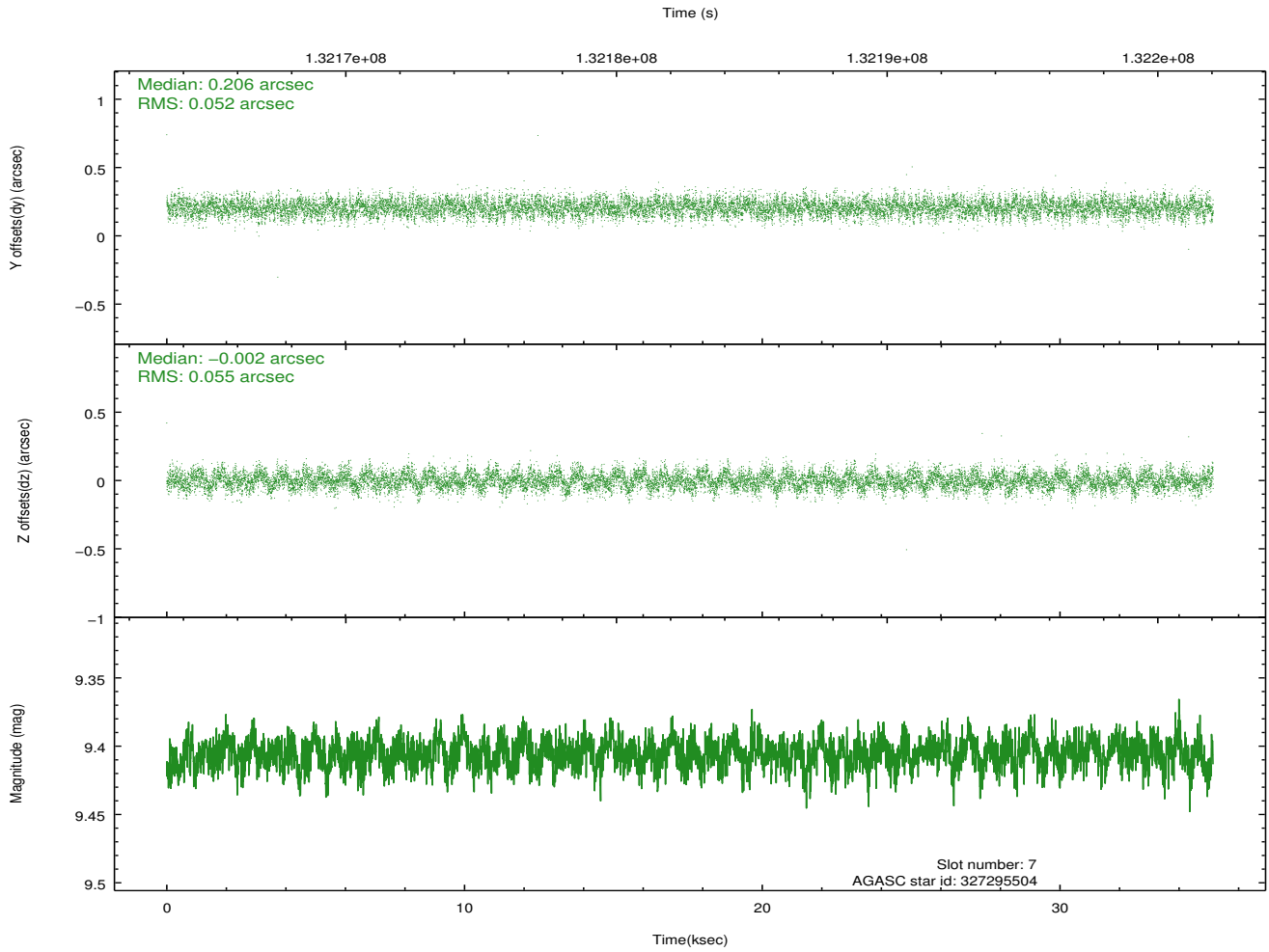
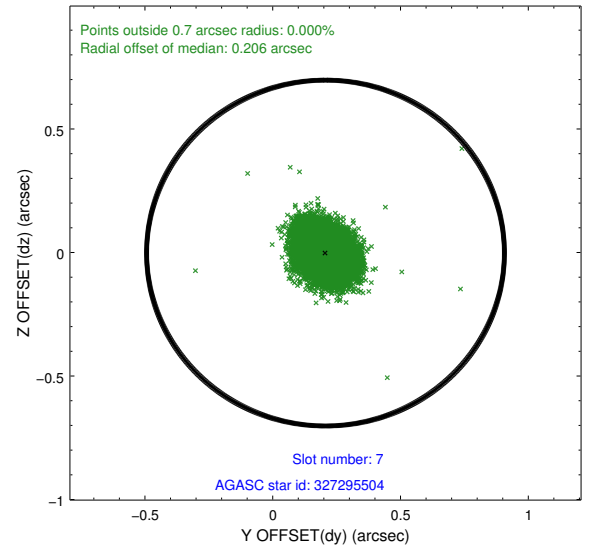
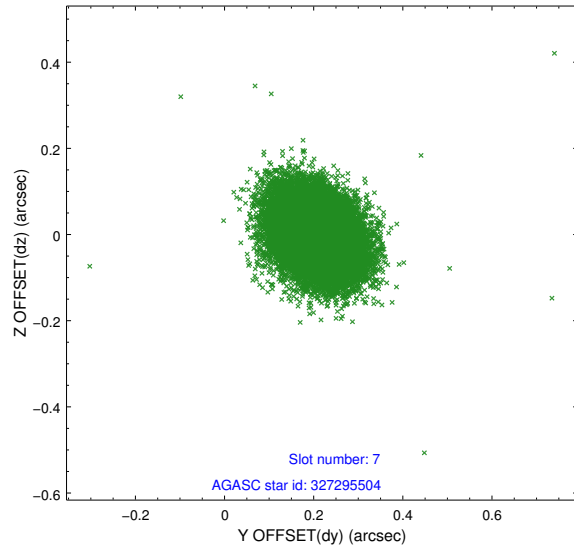


## 2.4.4 Slot 6





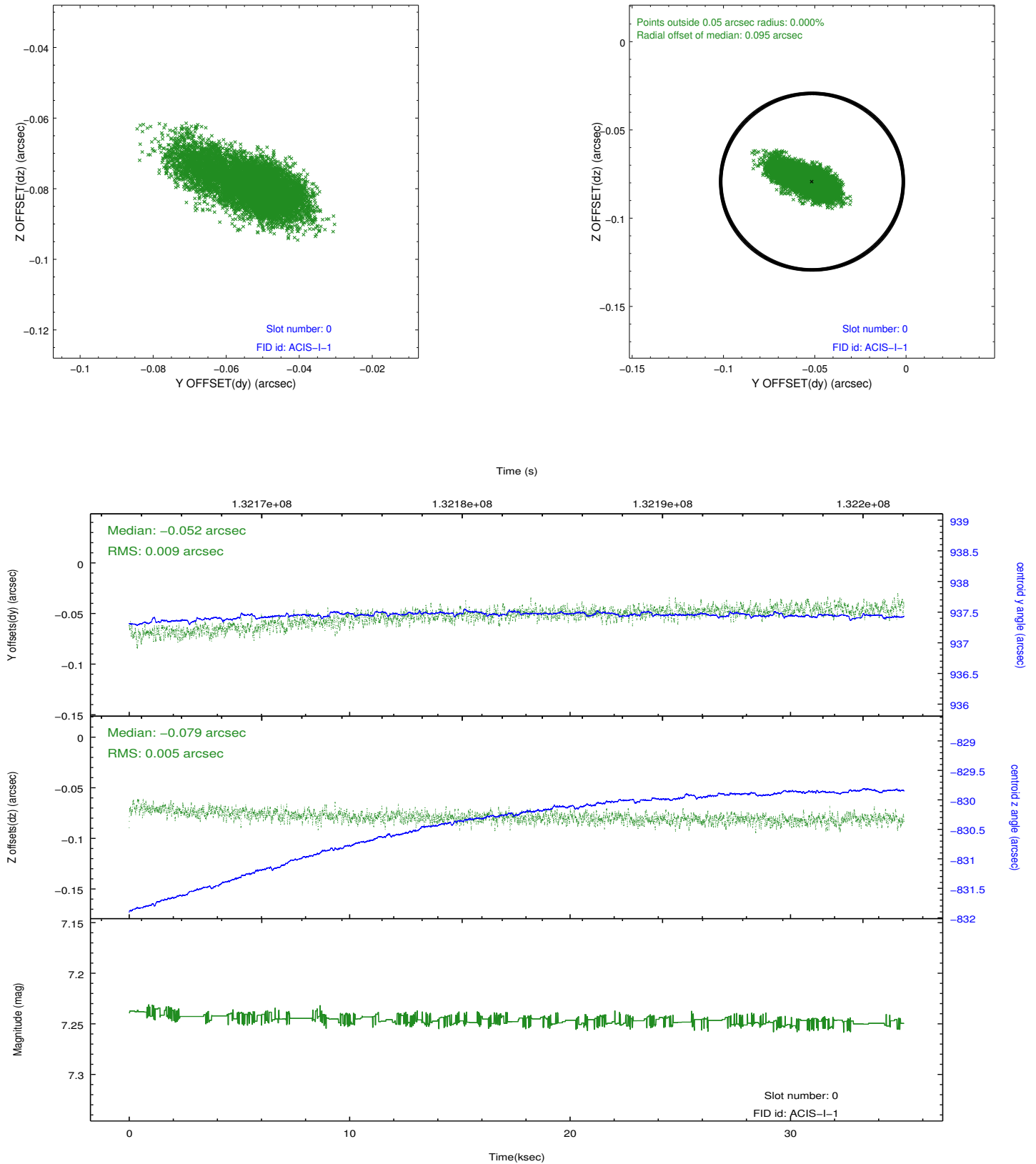
## 2.4.5 Slot 7





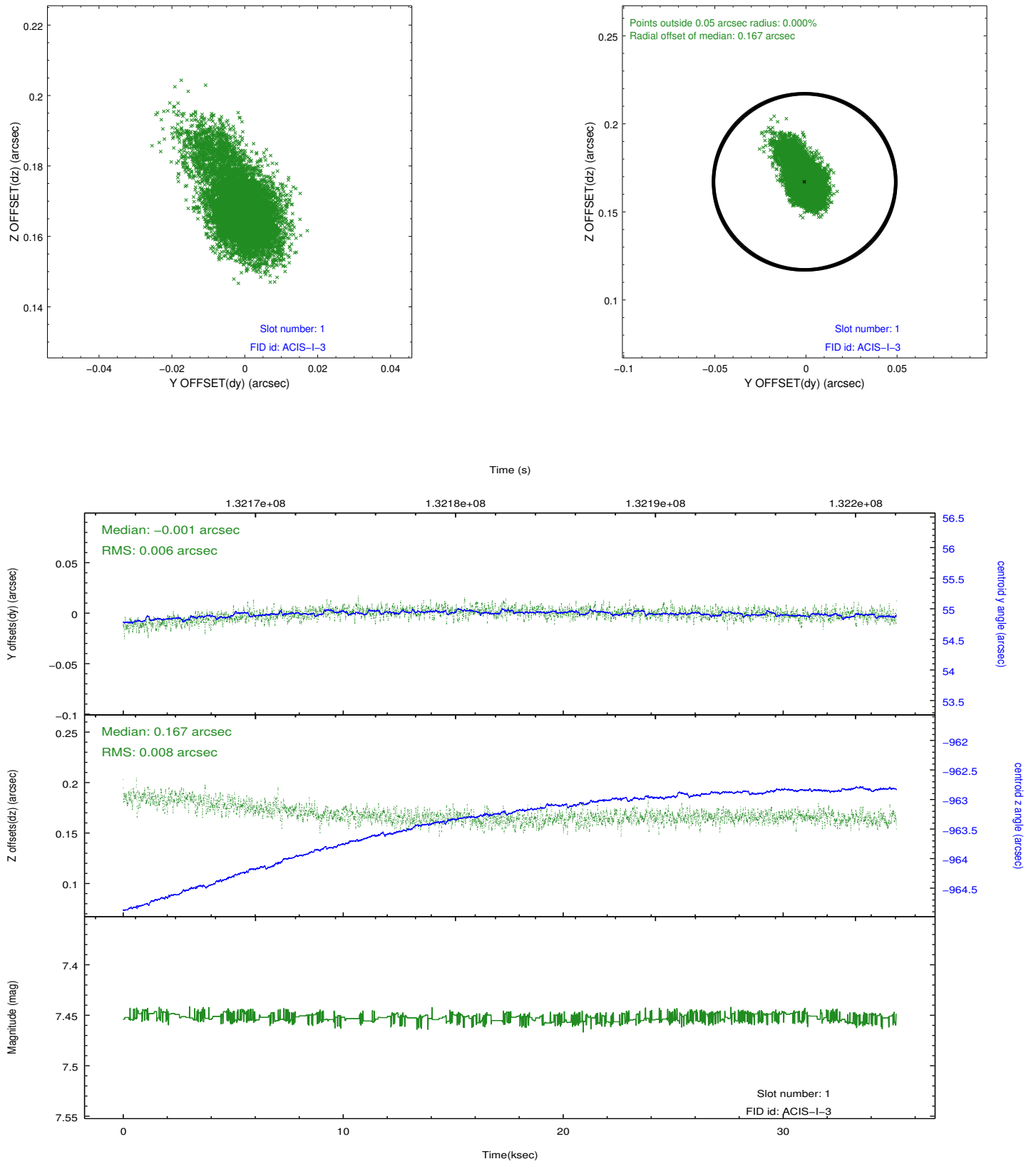
## 2.5 FID Slots

### 2.5.1 Slot 0



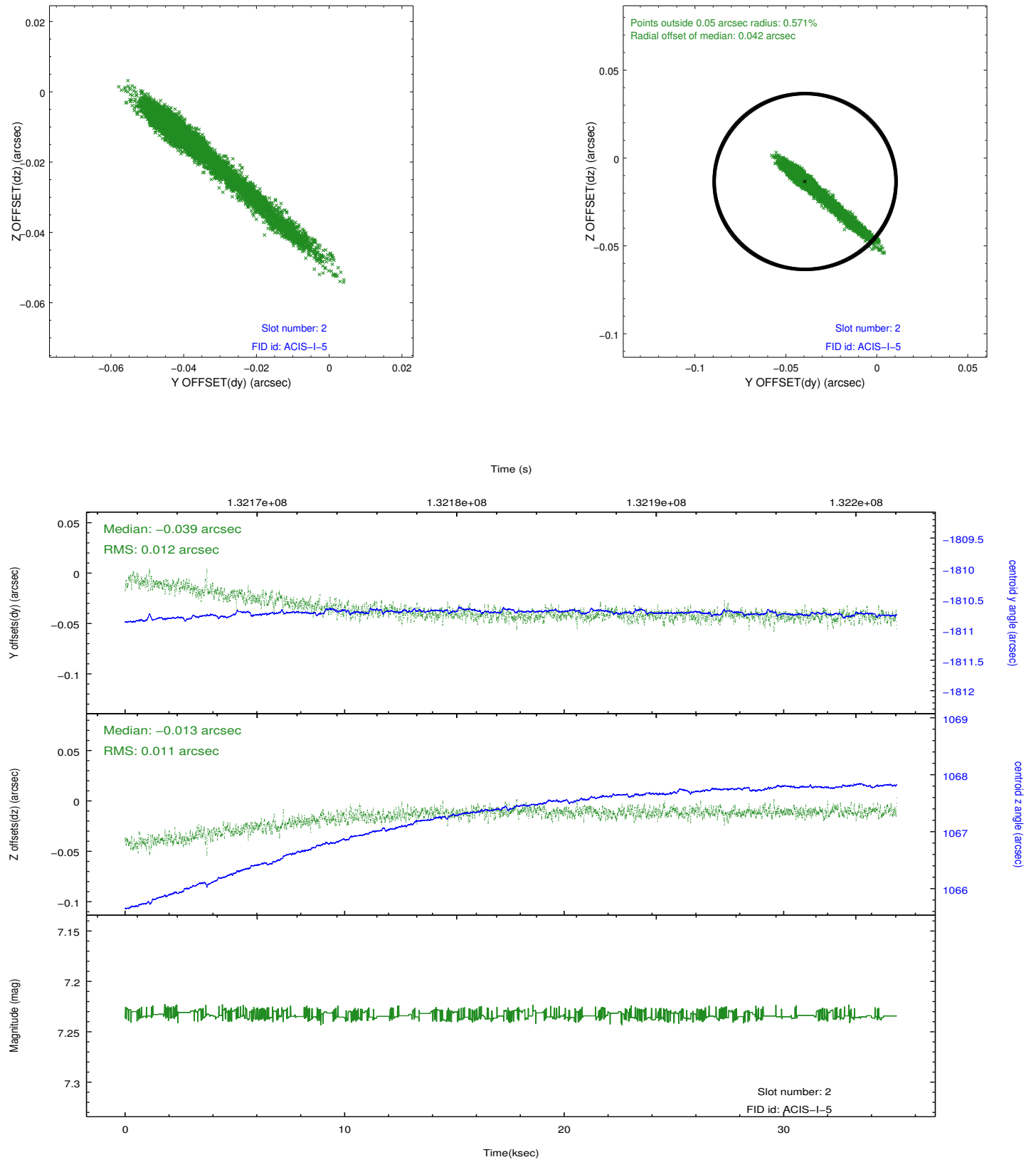


## 2.5.2 Slot 1





### 2.5.3 Slot 2





## A Summary

### A.1 Status

V&V Scientist	Beth Sundheim
V&V Date (YYYY-MM-DD)	2012.10.05
V&V Edition	1
V&V Disposition and Status	OK
V&V Charge Time	34.772

### A.2 Comments