

V&V Reference Report

L2 ASCDS Version : 7.6.8.1

Observation 3187 - L2 Version 001
Chandra X-Ray Center

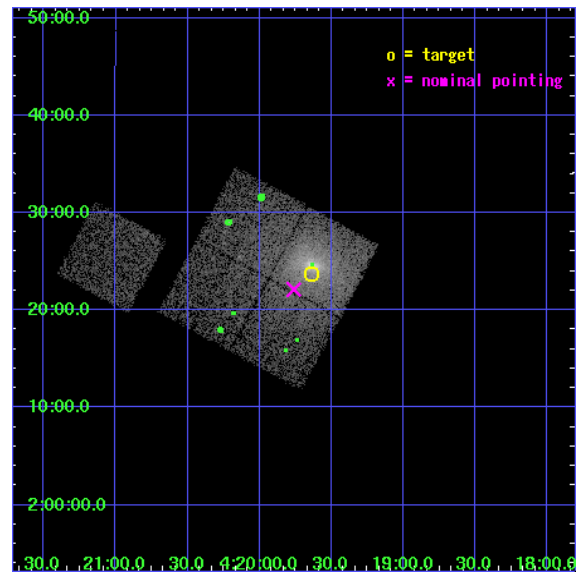
L2 Processing Date : Aug 26 2006

Contents

1	Front	2
2	OBI	3
2.1	OBI	3
2.1.1	Images	3
2.1.2	Bias	3
2.1.3	Parameters	4
2.1.4	Events	4
2.2	Compared Parameters	5
2.3	Aspect	6
2.4	Star Slots	9
2.4.1	Slot 3	9
2.4.2	Slot 4	10
2.4.3	Slot 5	11
2.4.4	Slot 6	12
2.4.5	Slot 7	13
2.5	FID Slots	14
2.5.1	Slot 0	14
2.5.2	Slot 1	15
2.5.3	Slot 2	16
3	Point Sources	17
A	Summary	18
A.1	Status	18
A.2	Comments	18

1 Front

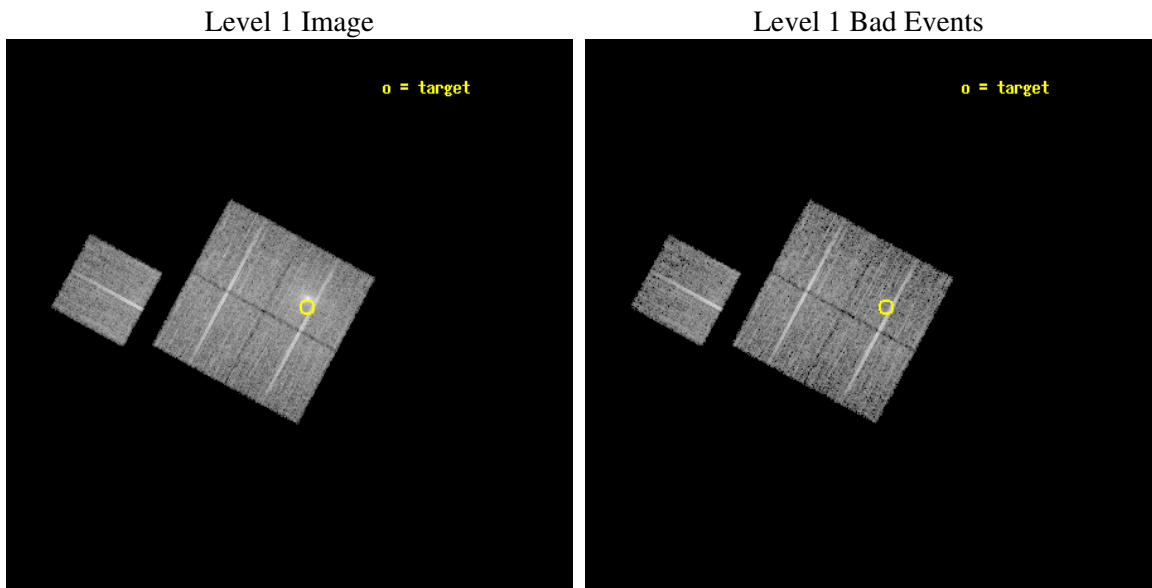
seq_num	800187
obs_id	3187
title	OLEGS OR FOSSIL GROUPS -- STUDYING EVOLVED GALAXY SYSTEMS
observer	Dr. Stephen Murray
object	NGC1550-B
dtcycle	0
cycle	P
ra_targ	64.90938
dec_targ	2.395
ra_nom	64.940289271889
dec_nom	2.3688021558709
roll_nom	298.37975191452
revision	2
ontime	9774.2999812067
livetime	9646.5915562172
ontime0	9771.1404654831
ontime1	9774.2999812067
ontime2	9771.1590109617
ontime3	9771.1589910537
ontime6	9771.0994454026
l2events	47168



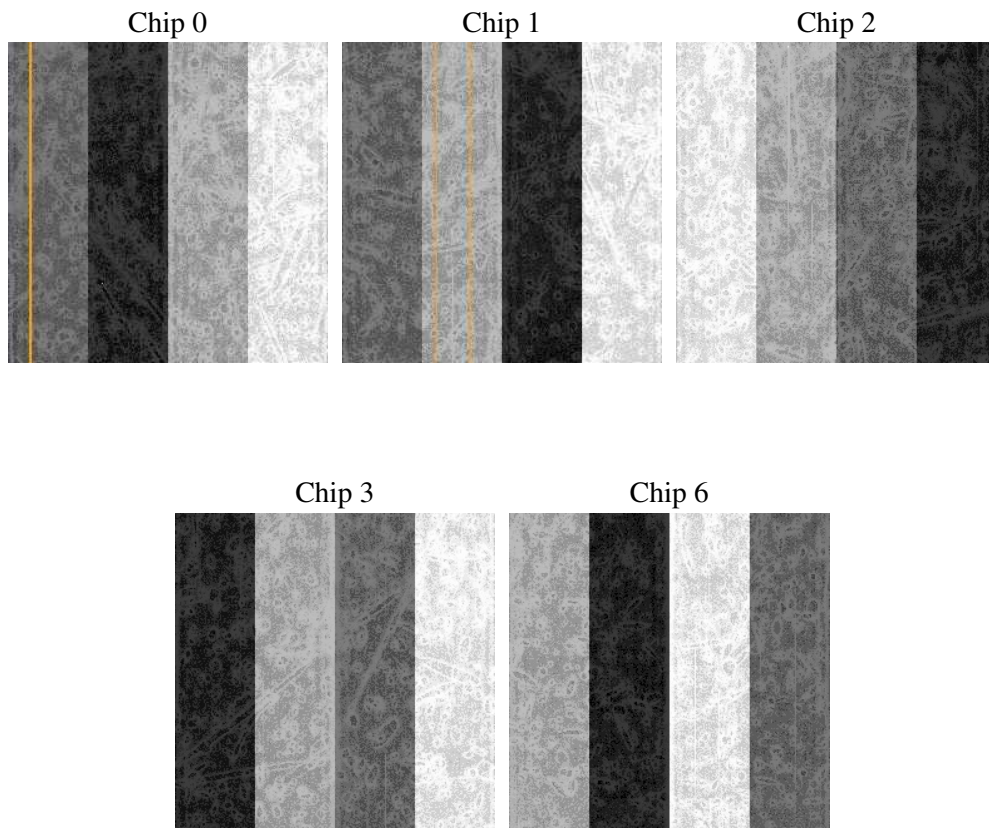
2 OBI

2.1 OBI

2.1.1 Images



2.1.2 Bias



2.1.3 Parameters

obi_num	0
ascdsver	7.6.8.1
caldsver	3.2.3
date	2006-08-26T03:27:47
revision	2

sched_exp_time	10000.000000
ontime	9777.9484529644
ontime0	9774.8074428886
ontime1	9777.9484529644
ontime2	9774.8074628115
ontime3	9774.8074628115
ontime6	9774.8074628115
l1events	292353

2.1.4 Events

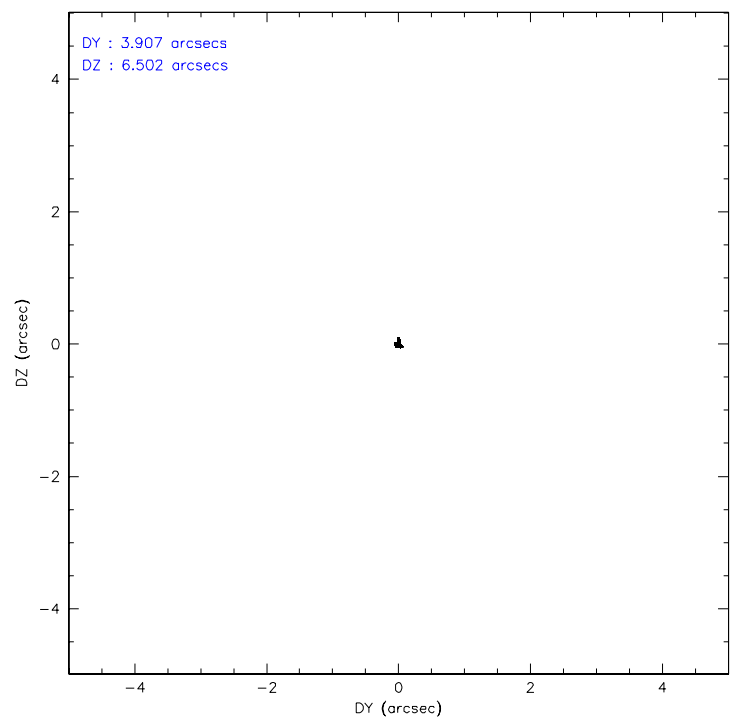
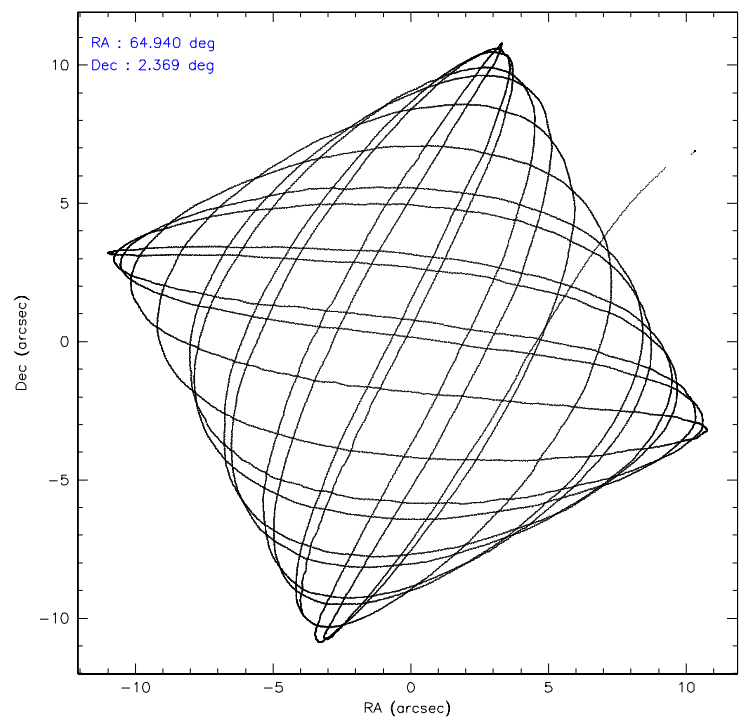
	ccd 0	ccd 1	ccd 2	ccd 3	ccd 6
level 1 events	53063	70100	58084	57849	53257
rejected events	44957	44750	51301	49792	47764
rejected %	84%	63%	88%	86%	89%

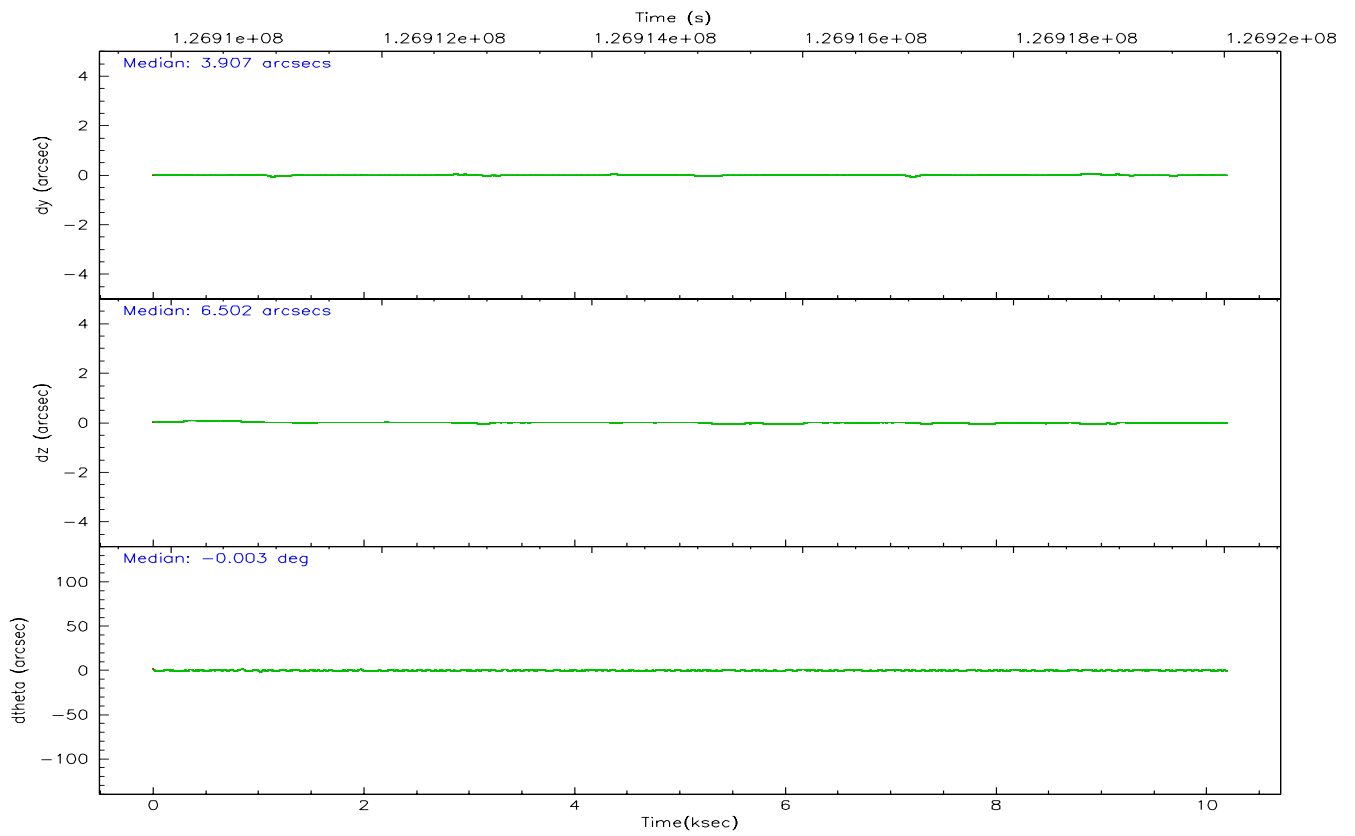
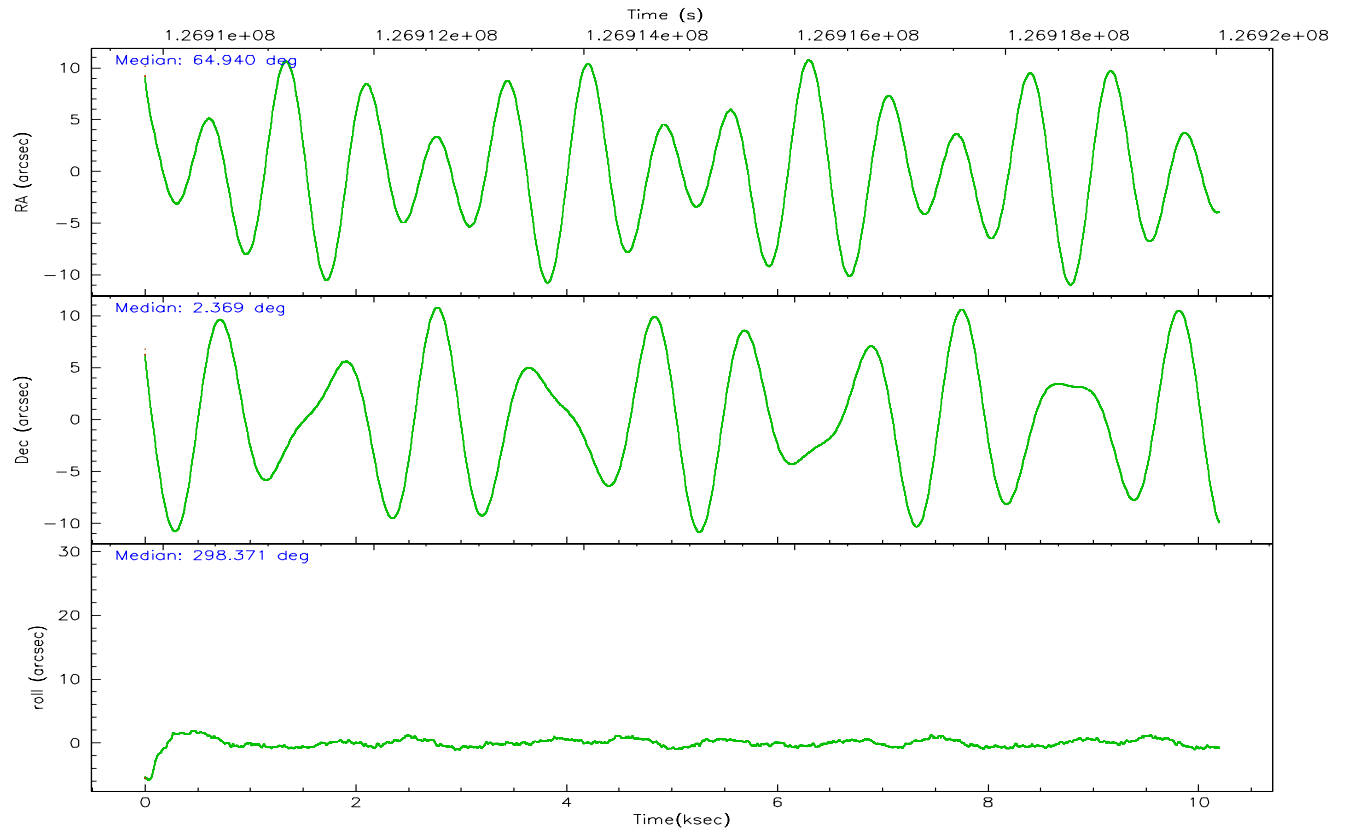
	ccd 0	ccd 1	ccd 2	ccd 3	ccd 6
grade 0 events	4242	18903	3249	4435	2078
	7%	26%	5%	7%	3%
grade 1 events	38	114	25	43	24
	0%	0%	0%	0%	0%
grade 2 events	1443	2789	1399	1343	1124
	2%	3%	2%	2%	2%
grade 3 events	688	1118	570	670	638
	1%	1%	0%	1%	1%
grade 4 events	660	1147	618	628	590
	1%	1%	1%	1%	1%
grade 5 events	1645	1890	1561	1966	1867
	3%	2%	2%	3%	3%
grade 6 events	1077	1402	948	983	1065
	2%	2%	1%	1%	1%
grade 7 events	43270	42737	49714	47781	45871
	81%	60%	85%	82%	86%

2.2 Compared Parameters

Parameter	Planned	Actual	Parameter	Planned	Actual
Instrument	ACIS	ACIS	Obspar format version number	6	6
Detector	ACIS-01236	ACIS-01236	Obspar file type	PREDICTED	ACTUAL
Grating	NONE	NONE	Obspar update status	NONE	UPDATED
Data mode	VFAINT	VFAINT	On-chip summing requested	N	N
Observation mode	POINTING	POINTING	Subarray requested	NONE	NONE
Pointing RA	64.916875	64.94028927188947	Alternating exposures requested	N	N
Pointing Dec	2.383136	2.368802155870898	Primary exposure time	0.000000	3.1
Pointing Roll	298.172033	298.3797519145165			
SIM focus pos (mm)	-0.782348	-0.7809083437167272			
SIM defocus (mm)	0	0.001439871863259334			
SIM translation stage pos (mm)	-243.592463	-243.5843520998312			
SIM translation stage offset (mm)	10	9.991899096901562			
Observation start time	126910027.184000	126909650.76414			
Observation start date	2002-01-08T20:46:03	2002-01-08T20:40:50			
Observation end time	126920027.184000	126920266.68957			
Observation end date	2002-01-08T23:32:43	2002-01-08T23:37:46			
Read mode	TIMED	TIMED			

2.3 Aspect



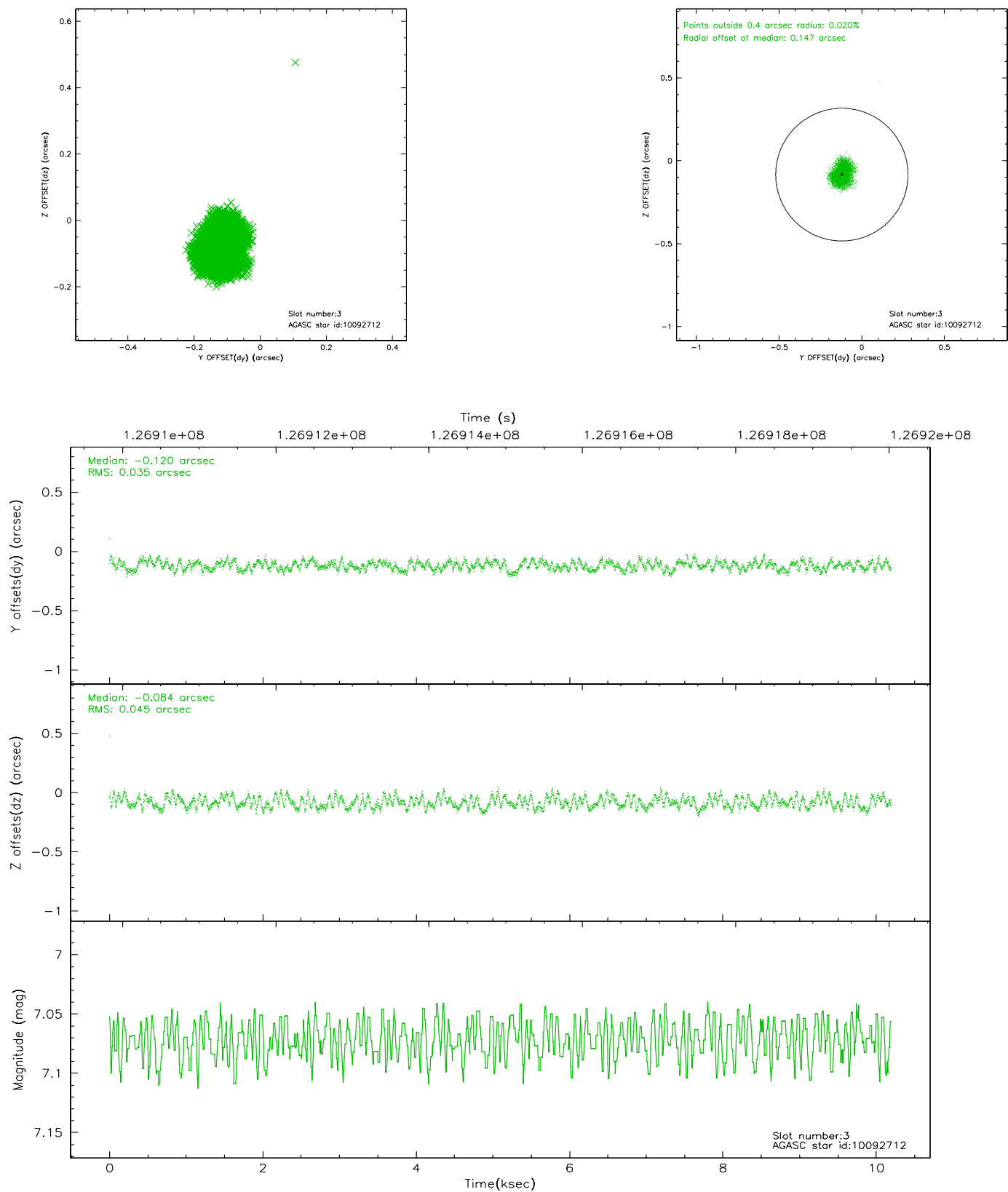


Slot Statistics

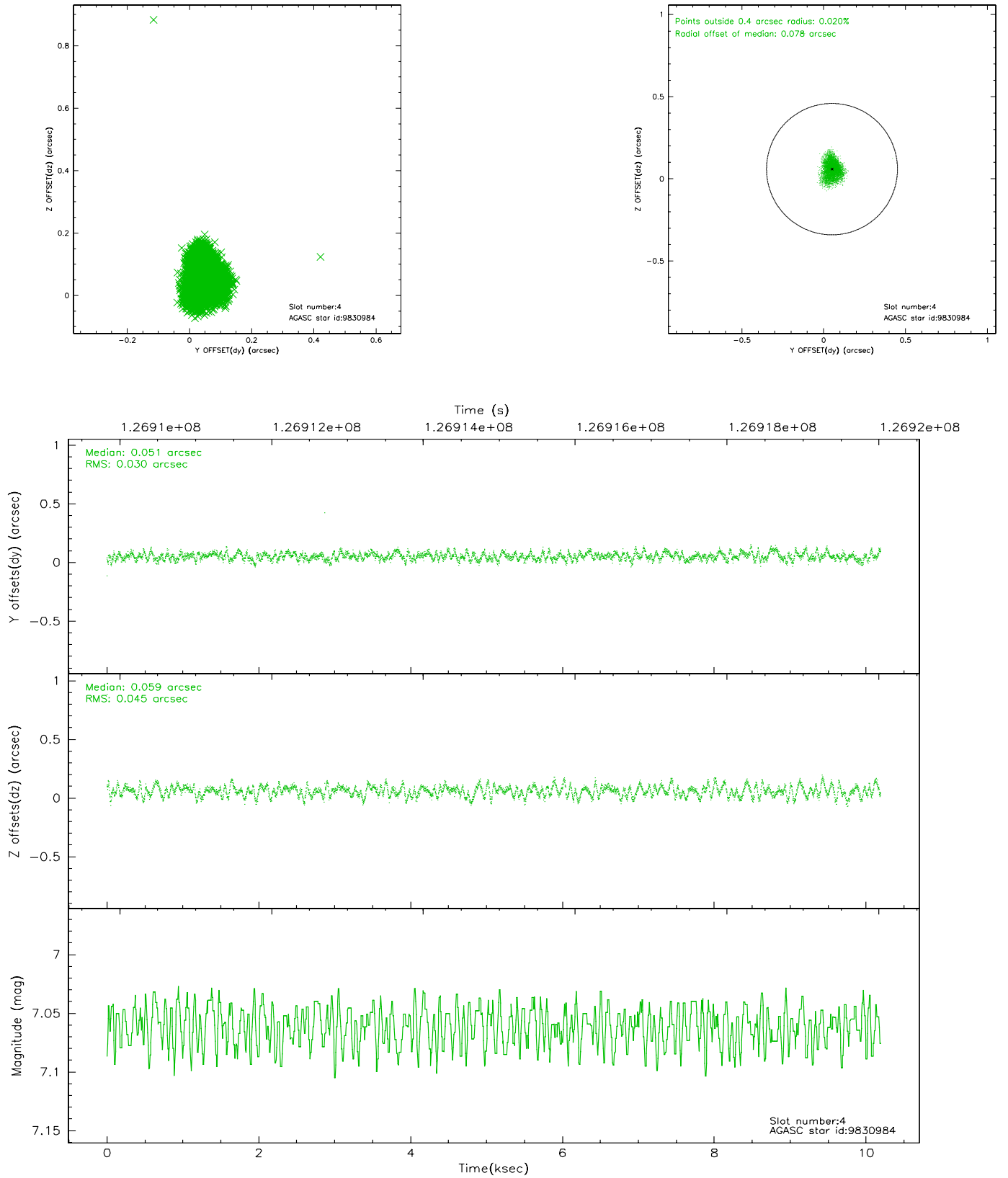
slot	status	id	mag	n_pts	med_dy	med_dz	dr1	dr2	ra	dec	mean_y	mean_z
0	FID	ACIS-I-1	7.28	2486	-0.093	0.140	0.006	0.010	0.000000	0.000000	935.97	-624.37
1	FID	ACIS-I-5	7.25	2486	0.007	-0.009	0.005	0.009	0.000000	0.000000	-1811.79	1272.75
2	FID	ACIS-I-6	7.25	2486	-0.005	-0.062	0.006	0.010	0.000000	0.000000	401.00	1917.81
3	GUIDE	10092712	7.07	4972	-0.120	-0.084	0.063	0.091	64.322459	2.529688	-1474.86	-1636.05
4	GUIDE	9830984	7.06	4972	0.051	0.059	0.057	0.091	65.442956	2.390106	870.58	1679.42
5	GUIDE	9703224	7.75	4972	0.076	0.006	0.050	0.082	64.728794	1.773459	1615.66	-1632.74
6	GUIDE	10093656	8.28	4973	-0.039	0.070	0.077	0.119	64.910383	2.992173	-1943.78	1013.66
7	GUIDE	9707240	8.74	4971	0.032	-0.047	0.082	0.131	64.375838	2.149421	-177.75	-2113.16

2.4 Star Slots

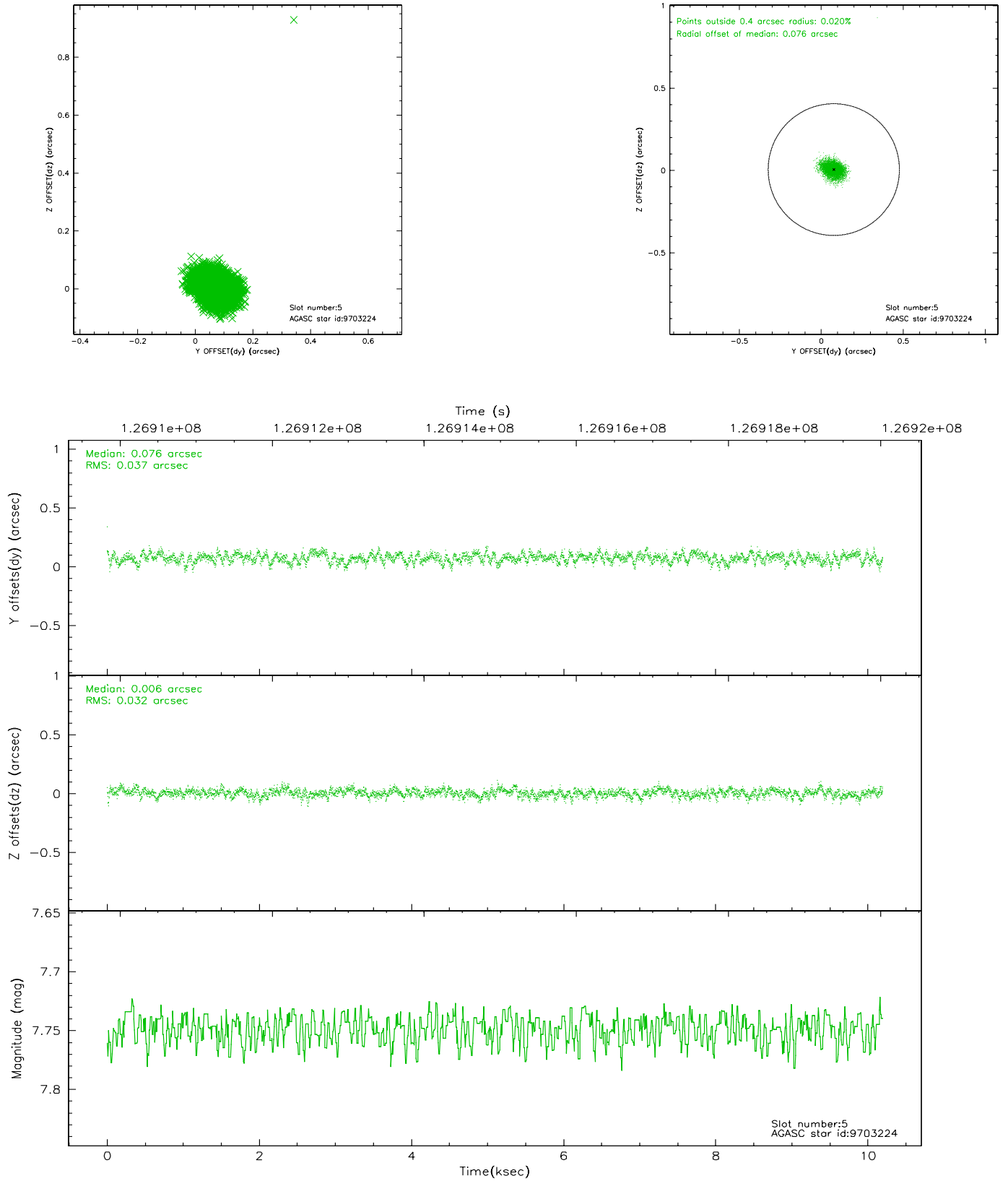
2.4.1 Slot 3



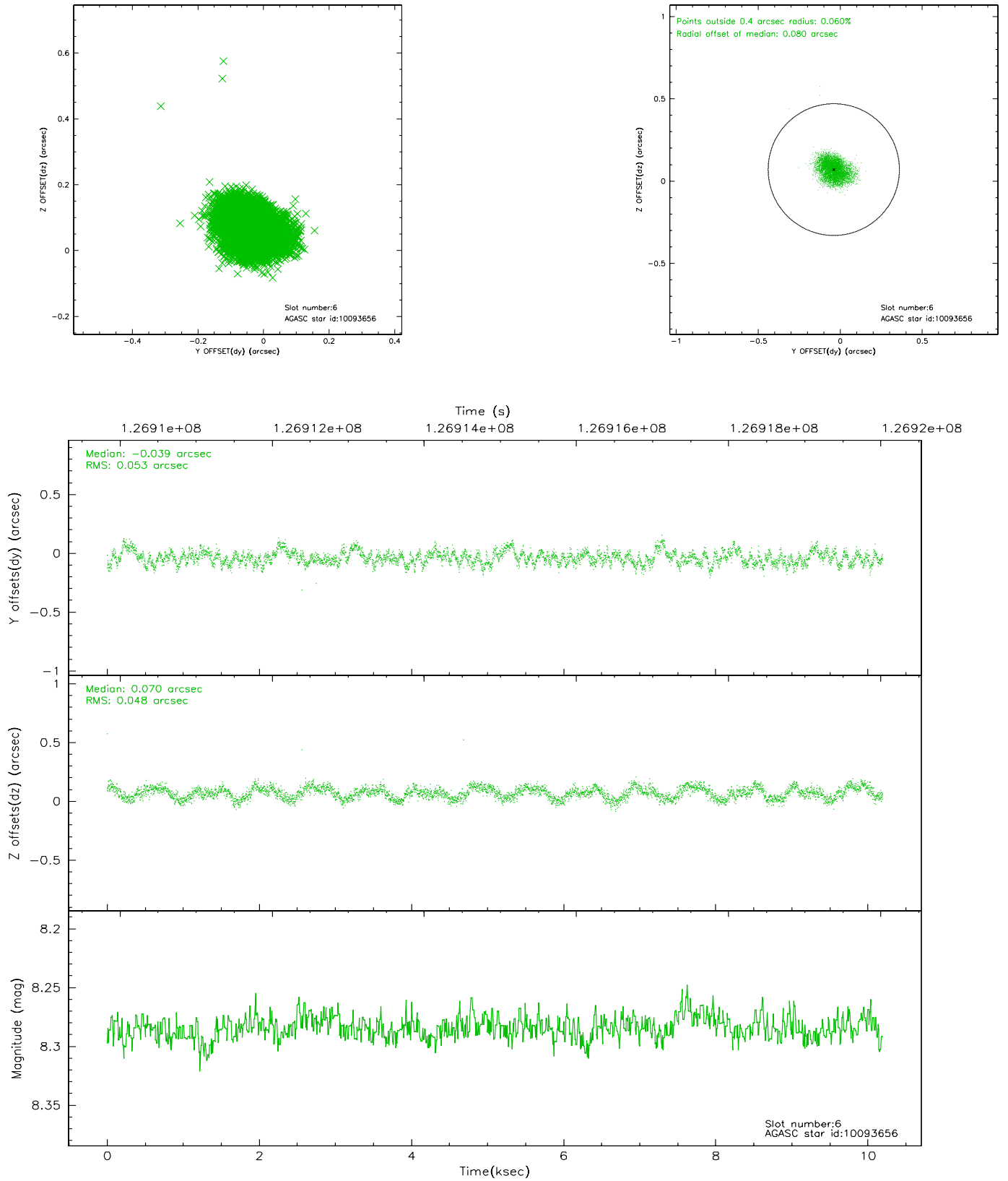
2.4.2 Slot 4



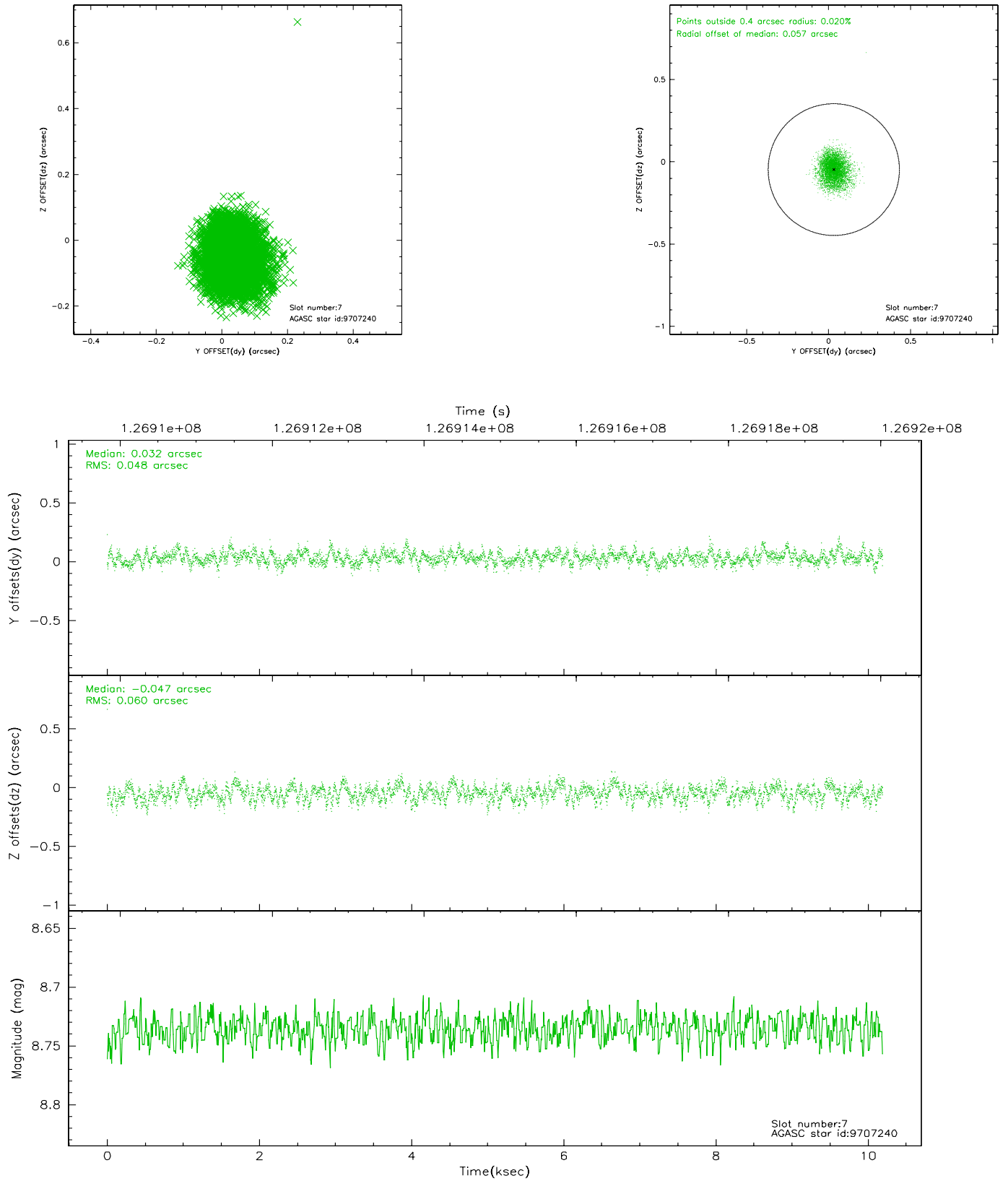
2.4.3 Slot 5



2.4.4 Slot 6

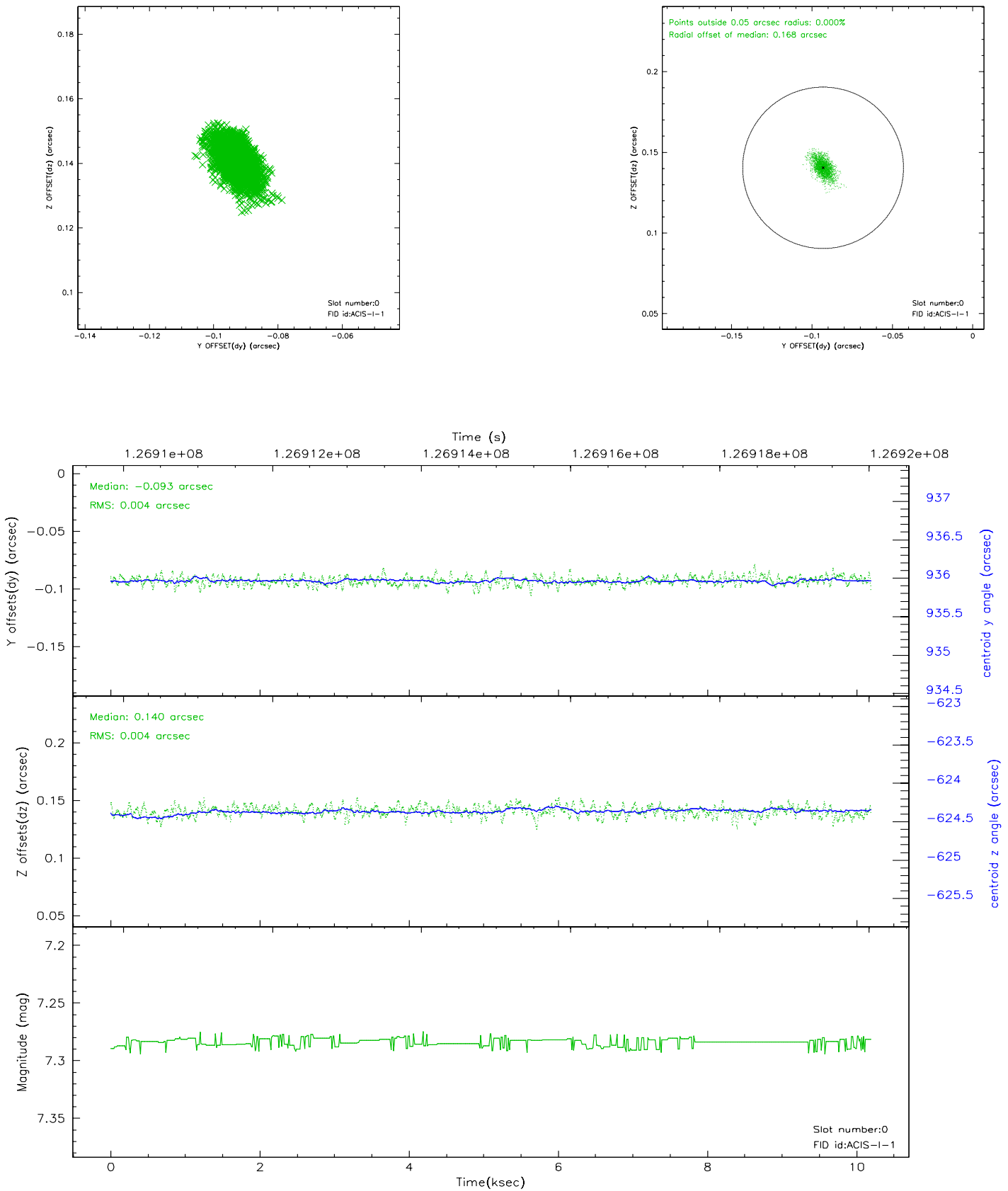


2.4.5 Slot 7

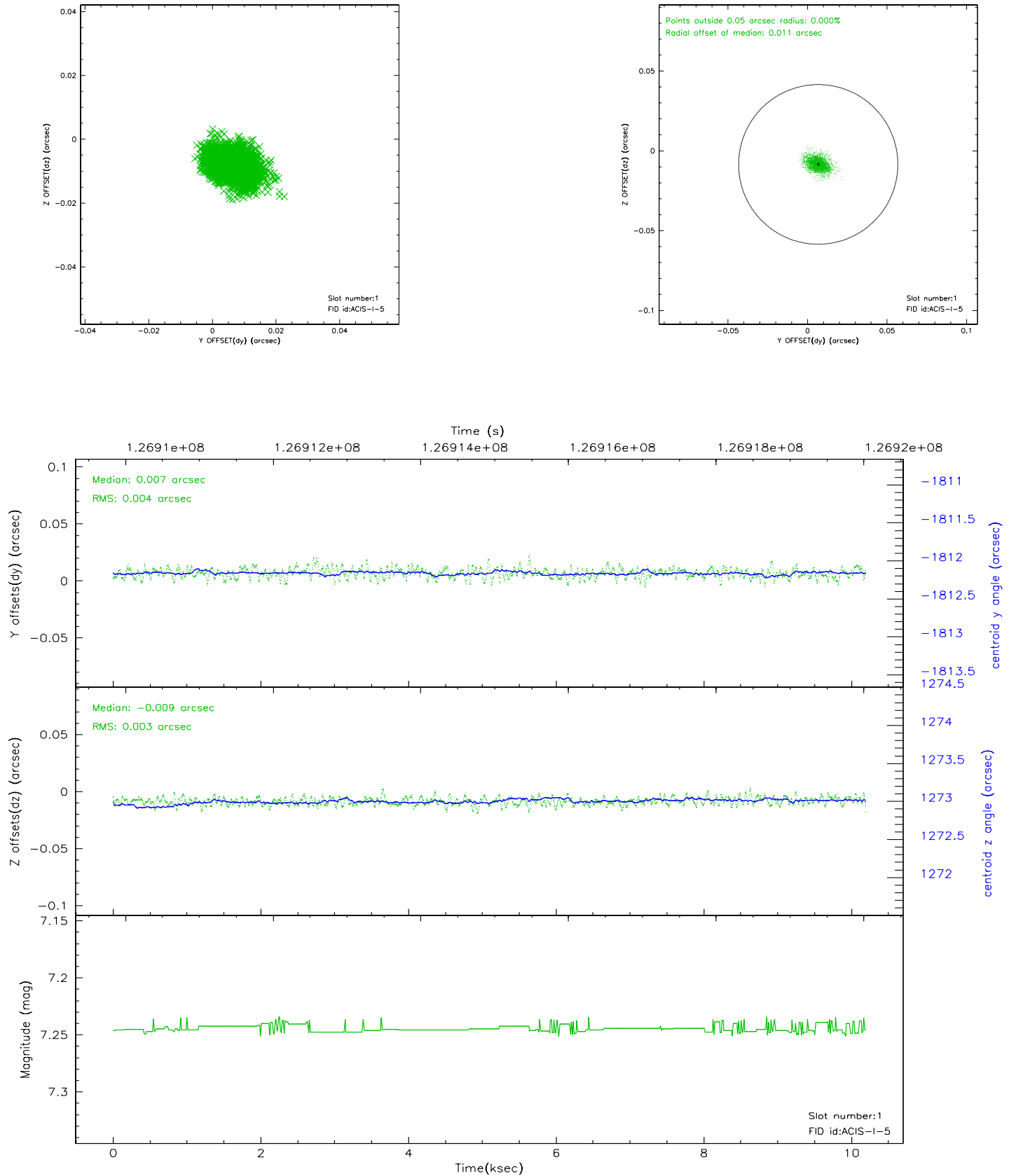


2.5 FID Slots

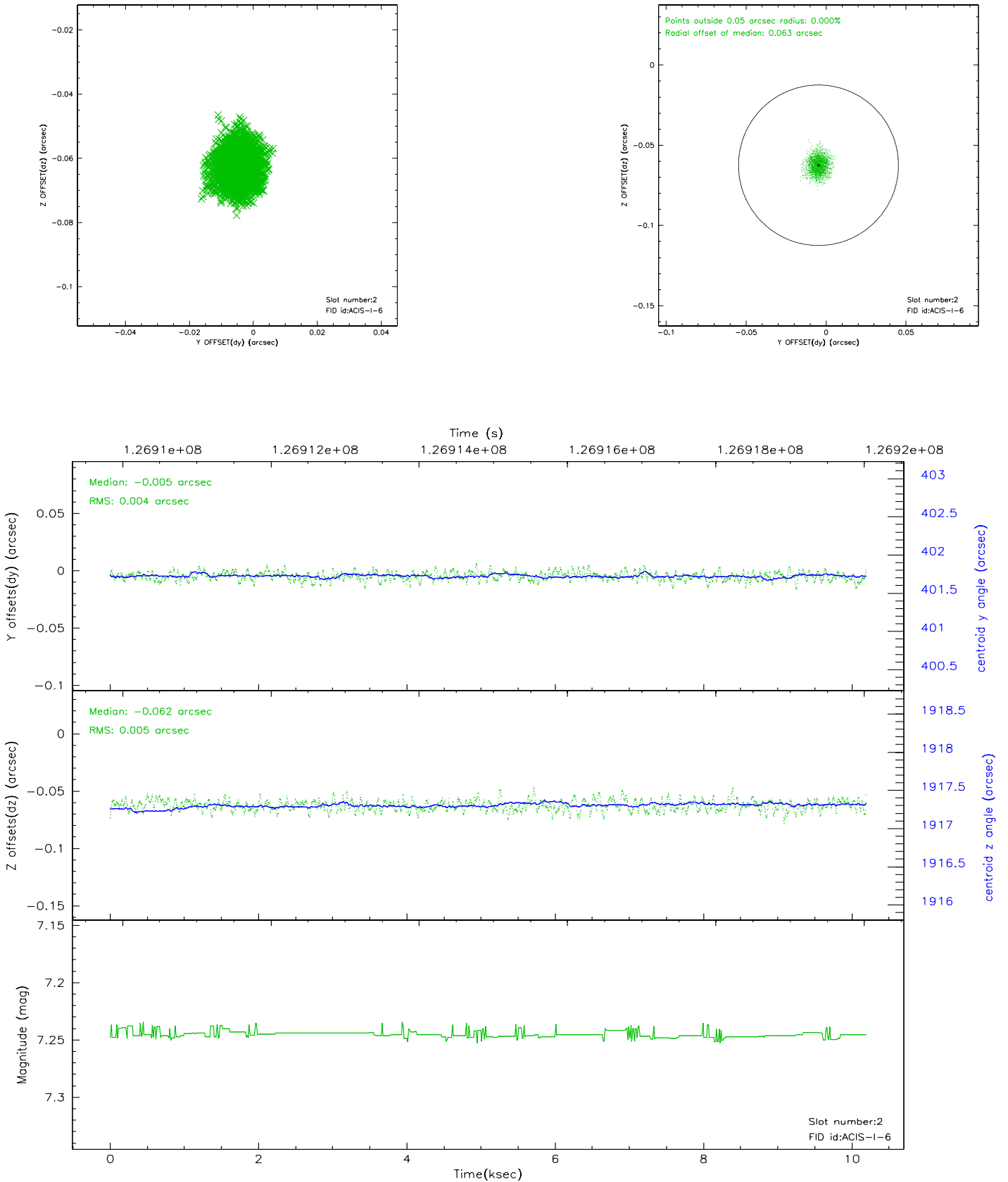
2.5.1 Slot 0



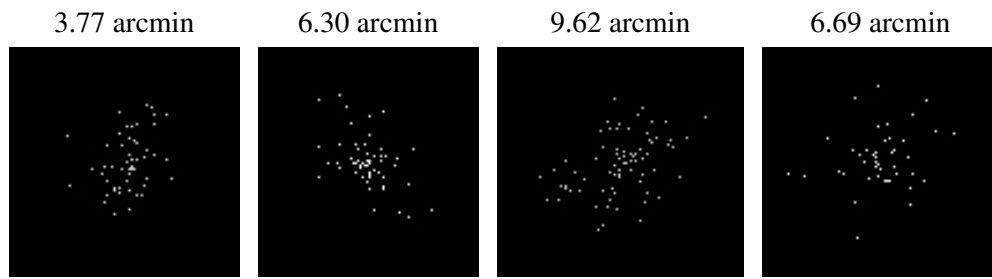
2.5.2 Slot 1



2.5.3 Slot 2



3 Point Sources



A Summary

A.1 Status

V&V Scientist	Jen Lauer
V&V Date (YYYY-MM-DD)	2006.08.28
V&V Edition	1
V&V Disposition and Status	OK
V&V Charge Time	9.774

A.2 Comments