

V&V Reference Report

L2 ASCDS Version : 7.6.8.1

Observation 3067 - L2 Version 001
Chandra X-Ray Center

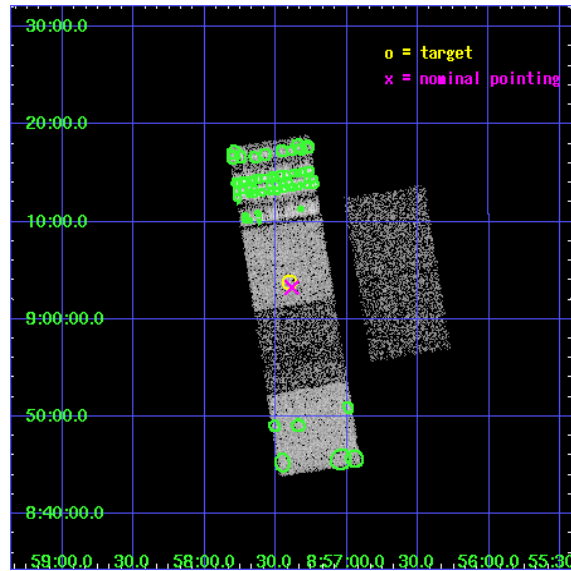
L2 Processing Date : Sep 8 2006

Contents

1	Front	2
2	OBI	3
2.1	OBI	3
2.1.1	Images	3
2.1.2	Bias	3
2.1.3	Parameters	4
2.1.4	Events	4
2.2	Compared Parameters	5
2.3	Aspect	6
2.4	Star Slots	9
2.4.1	Slot 3	9
2.4.2	Slot 4	10
2.4.3	Slot 5	11
2.4.4	Slot 6	12
2.4.5	Slot 7	13
2.5	FID Slots	14
2.5.1	Slot 0	14
2.5.2	Slot 1	15
2.5.3	Slot 2	16
3	Point Sources	17
A	Summary	18
A.1	Status	18
A.2	Comments	18

1 Front

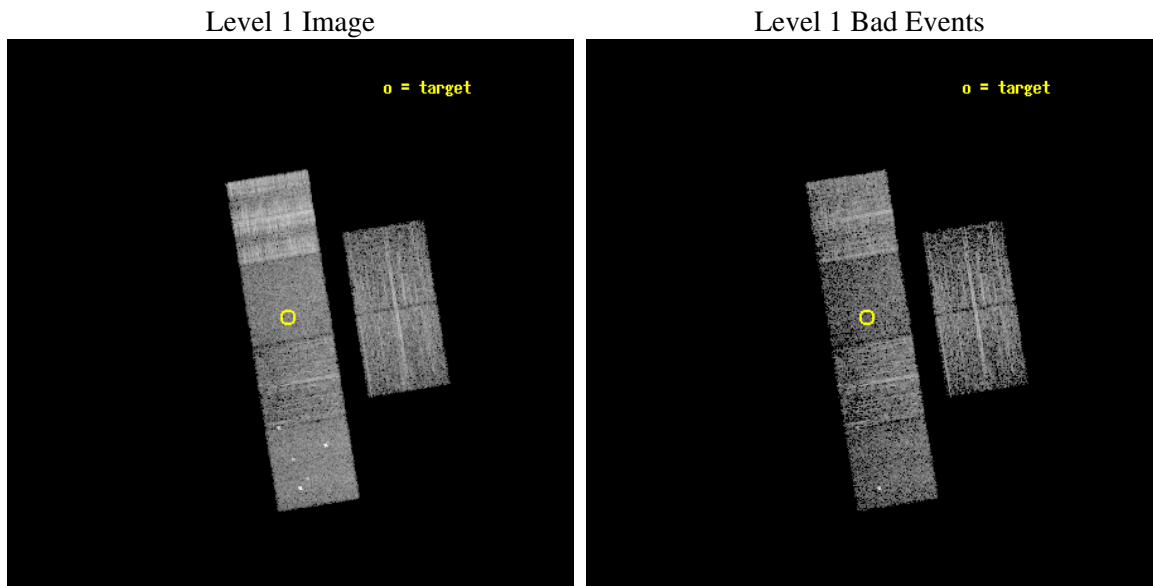
seq_num	700506
obs_id	3067
title	X-RAY WEAK BROAD-LINE QUASARS: ABSORPTION OR INTRINSIC X_RAY WEAKNESS ?
observer	Dr Guido Risaliti
object	HS 0854+0915
dtcycle	0
cycle	P
ra_targ	134.35
dec_targ	9.063611
ra_nom	134.34673618546
dec_nom	9.0543678125601
roll_nom	260.80058807993
revision	2
ontime	3756.8000034988
liveltime	3709.2291397811
ontime2	3756.8000034988
ontime3	3756.8000034988
ontime5	3756.8000034988
ontime6	3756.8000034988
ontime7	3756.8000034988
ontime8	3753.5590232462
l2events	51008



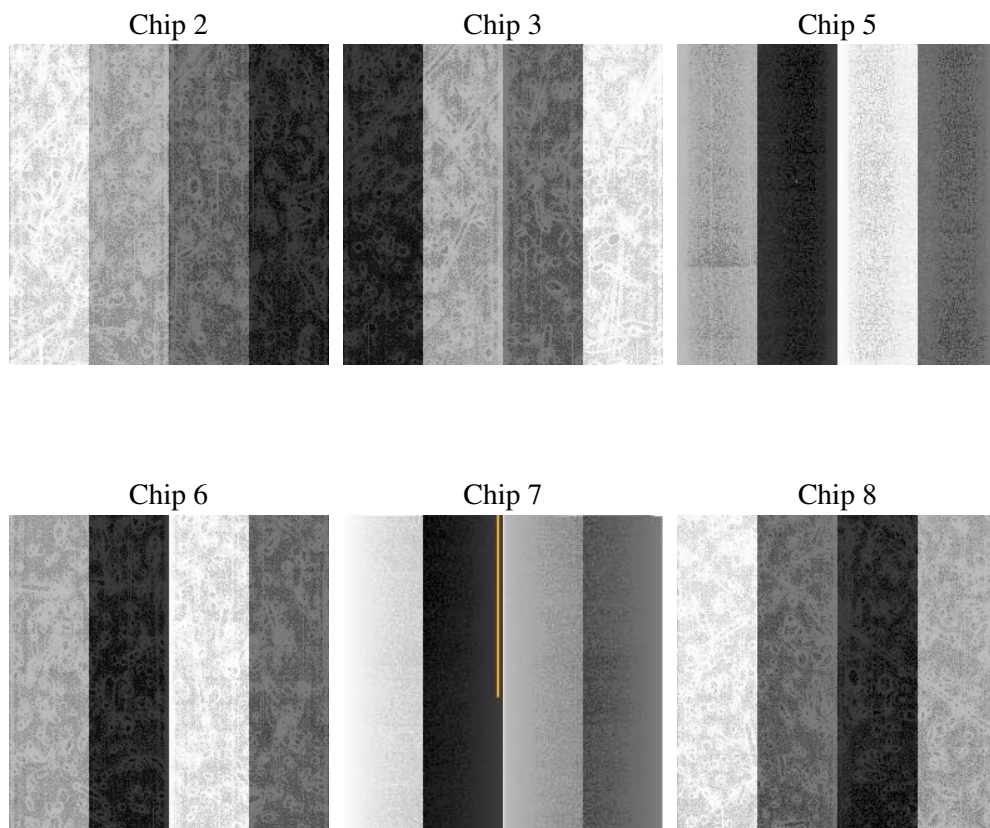
2 OBI

2.1 OBI

2.1.1 Images



2.1.2 Bias



2.1.3 Parameters

obi_num	1
ascdsver	7.6.8.1
caldbver	3.2.3
date	2006-09-08T08:25:51
revision	2

sched_exp_time	4000.000000
ontime	3759.5645420253
ontime2	3759.5645420253
ontime3	3759.5645121187
ontime5	3759.5645420253
ontime6	3759.5645121187
ontime7	3759.5645420253
ontime8	3756.3234521896
l1events	225766

2.1.4 Events

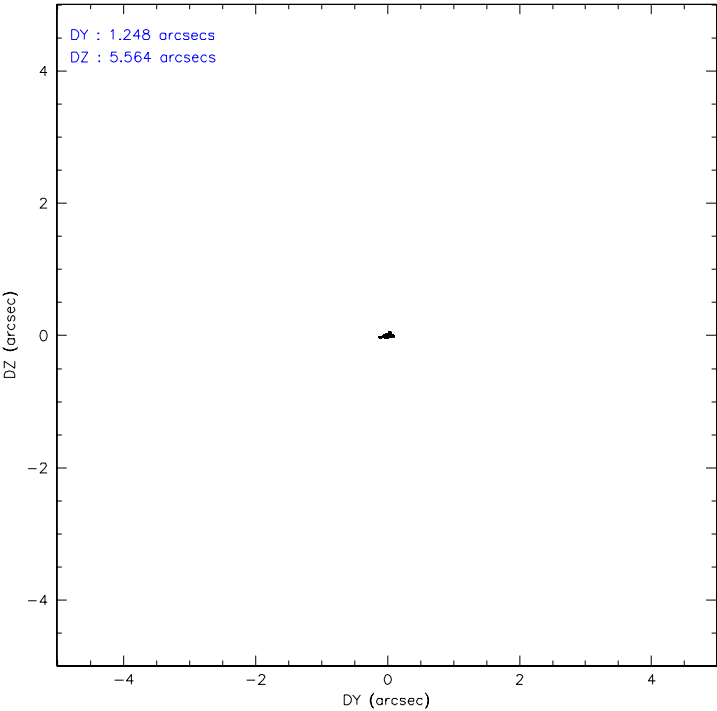
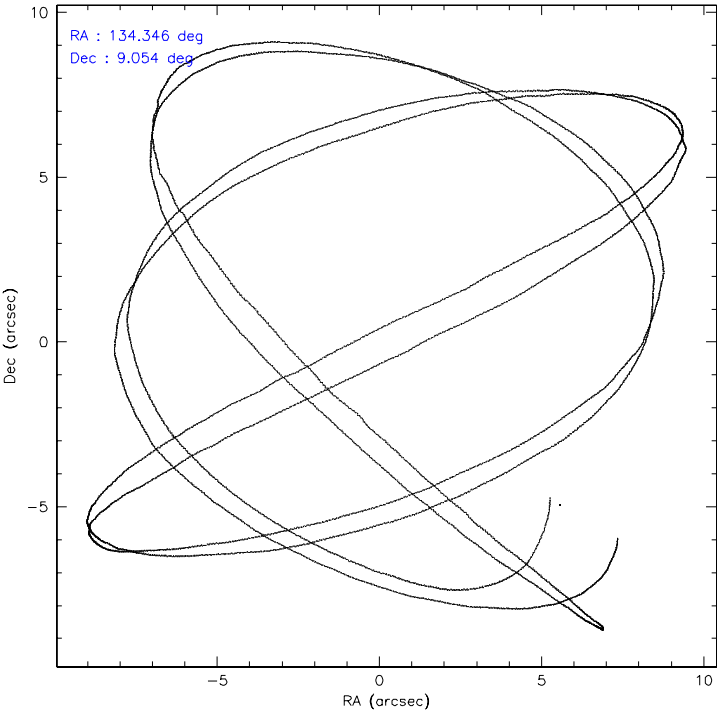
	ccd 2	ccd 3	ccd 5	ccd 6	ccd 7	ccd 8
level 1 events	30877	28584	36754	30538	31303	67710
rejected events	26644	25275	19907	26707	19198	36881
rejected %	86%	88%	54%	87%	61%	54%

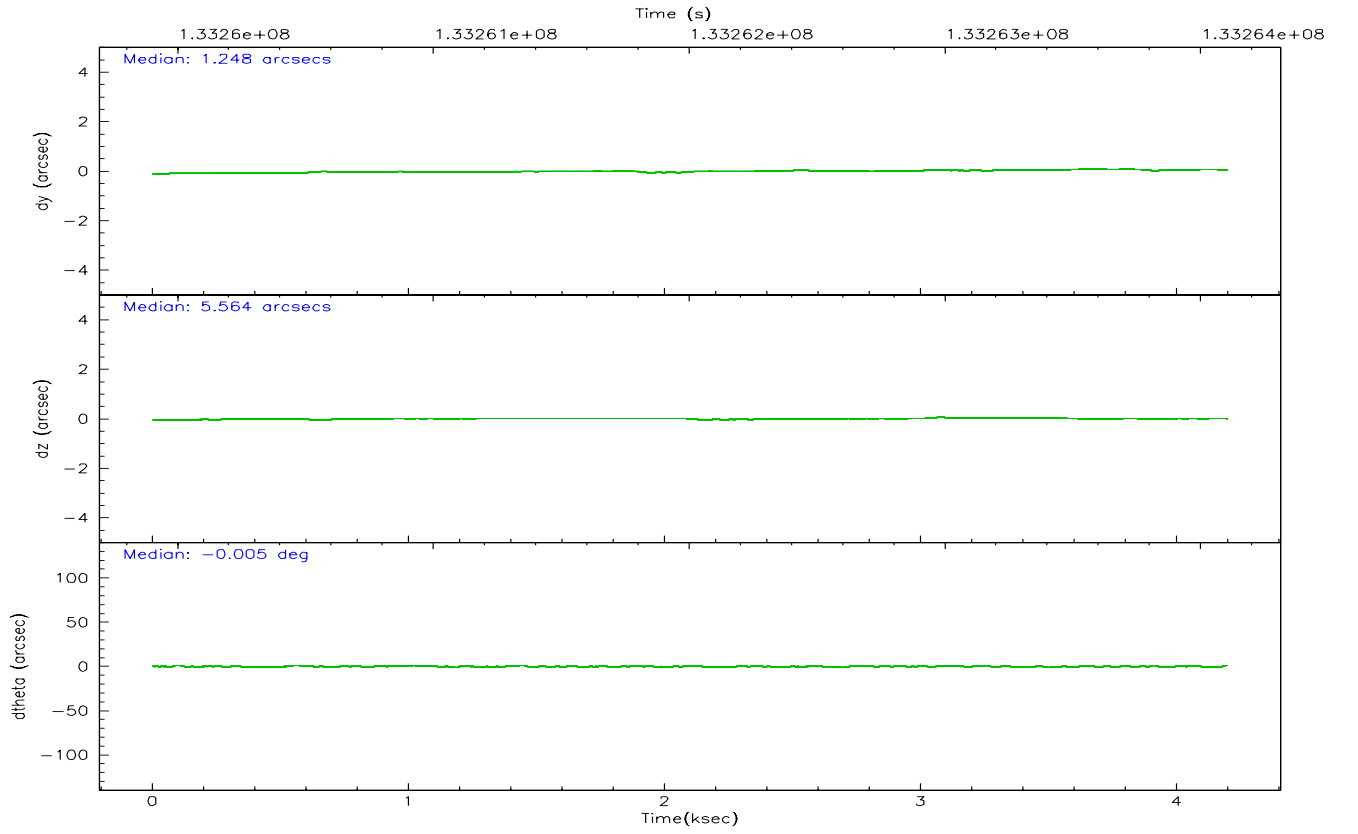
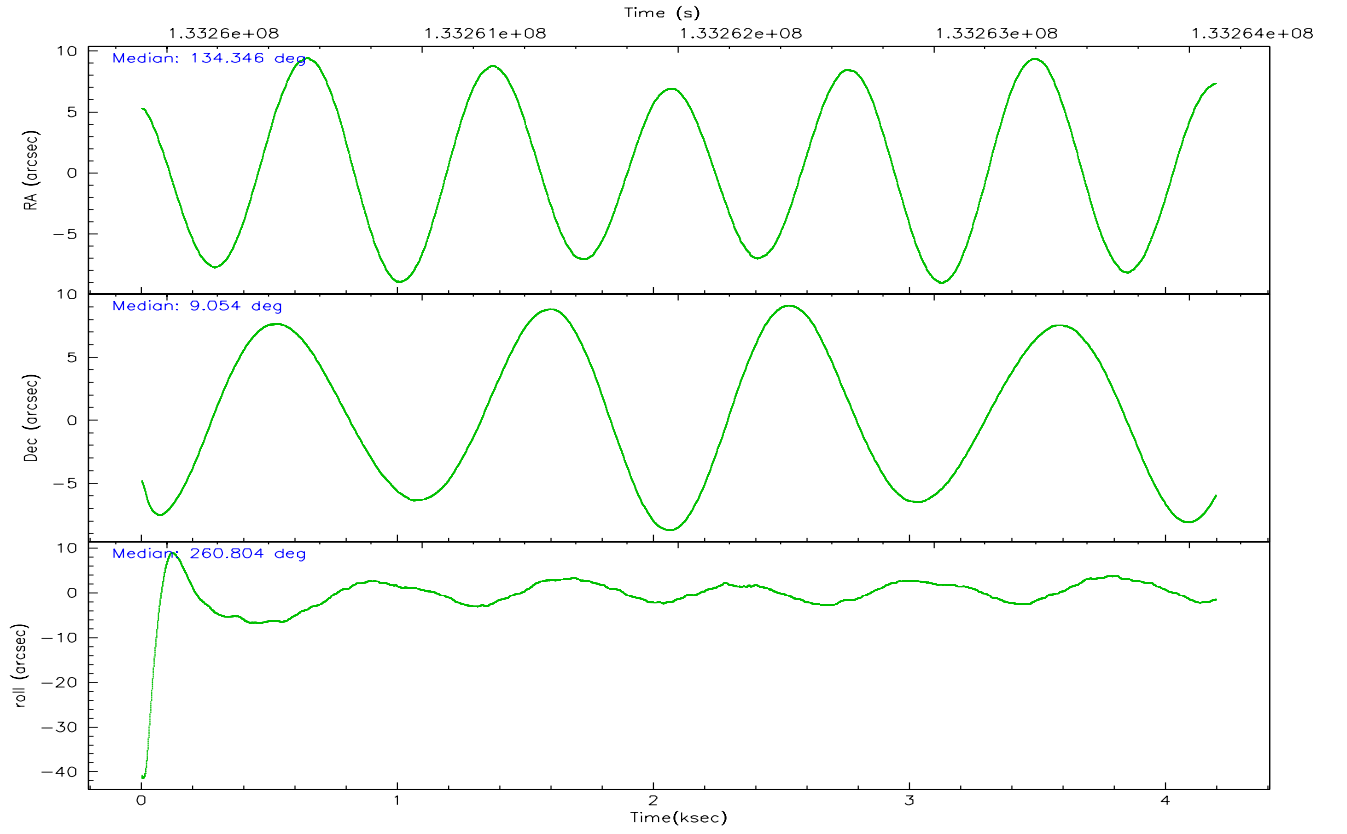
	ccd 2	ccd 3	ccd 5	ccd 6	ccd 7	ccd 8
grade 0 events	1706	1299	1986	1501	822	7889
	5%	4%	5%	4%	2%	11%
grade 1 events	16	8	59	15	23	68
	0%	0%	0%	0%	0%	0%
grade 2 events	1268	874	5504	1065	3081	5202
	4%	3%	14%	3%	9%	7%
grade 3 events	253	218	524	295	708	4994
	0%	0%	1%	0%	2%	7%
grade 4 events	318	254	506	247	644	4457
	1%	0%	1%	0%	2%	6%
grade 5 events	830	903	1775	973	2034	1643
	2%	3%	4%	3%	6%	2%
grade 6 events	690	665	8339	728	6867	8325
	2%	2%	22%	2%	21%	12%
grade 7 events	25796	24363	18061	25714	17124	35132
	83%	85%	49%	84%	54%	51%

2.2 Compared Parameters

Parameter	Planned	Actual	Parameter	Planned	Actual
Instrument	ACIS	ACIS	Obspar format version number	6	6
Detector	ACIS-235678	ACIS-235678	Obspar file type	PREDICTED	ACTUAL
Grating	NONE	NONE	Obspar update status	NONE	UPDATED
Data mode	FAINT	FAINT	On-chip summing requested	N	N
Observation mode	POINTING	POINTING	Subarray requested	NONE	NONE
Pointing RA	134.336624	134.346736185462	Alternating exposures requested	N	N
Pointing Dec	9.079807	9.054367812560068	Primary exposure time	0.000000	3.2
Pointing Roll	260.645701	260.8005880799304			
SIM focus pos (mm)	-0.684267	-0.6828225247311905			
SIM defocus (mm)	0	0.001444936568705701			
SIM translation stage pos (mm)	-190.132523	-190.1425803651734			
SIM translation stage offset (mm)	0	0.01005778216563158			
Observation start time	133260103.184000	133259498.34547			
Observation start date	2002-03-23T08:40:39	2002-03-23T08:31:38			
Observation end time	133264103.184000	133264997.47069			
Observation end date	2002-03-23T09:47:19	2002-03-23T10:03:17			
Read mode	TIMED	TIMED			

2.3 Aspect



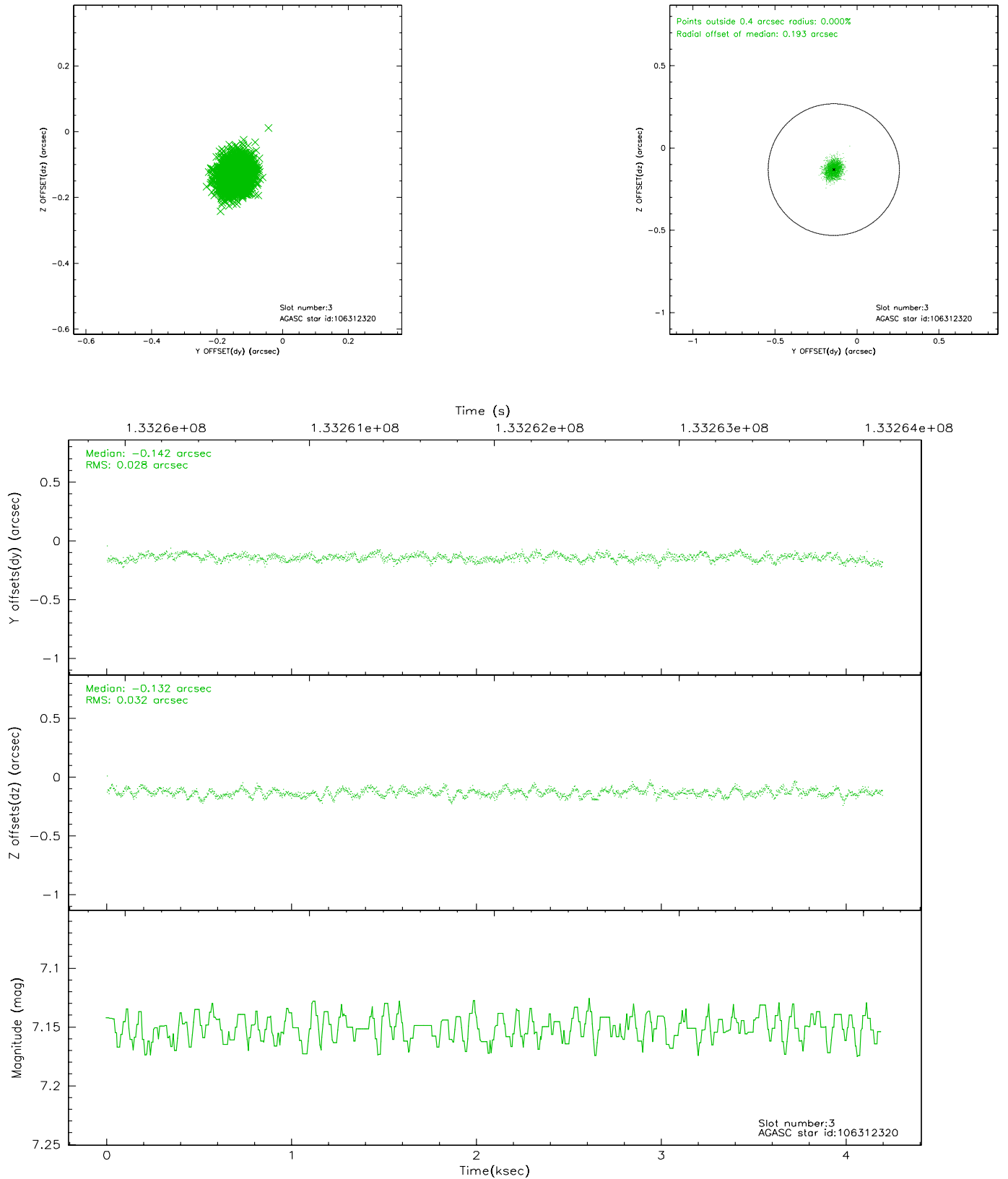


Slot Statistics

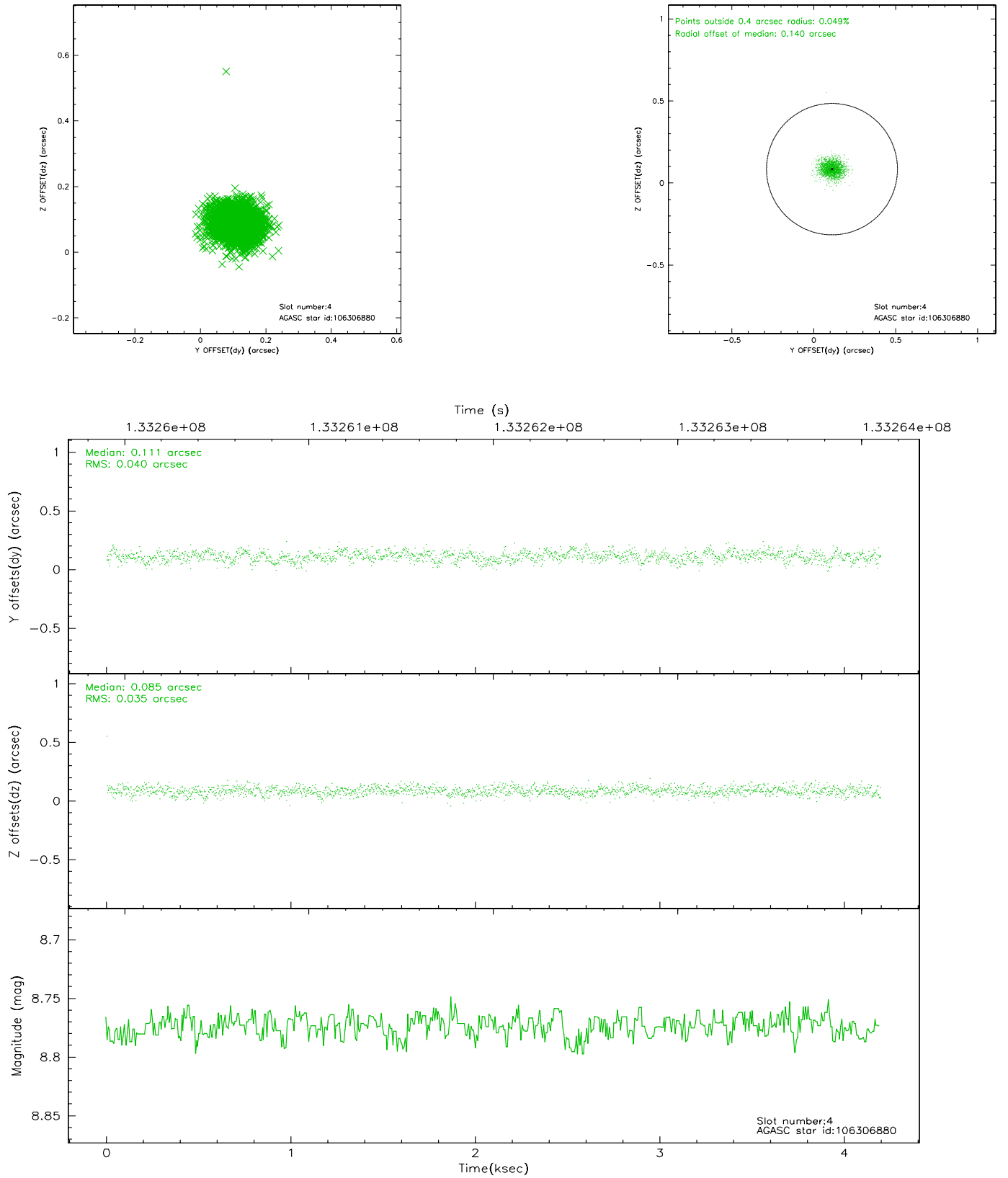
slot	status	id	mag	n_pts	med_dy	med_dz	dr1	dr2	ra	dec	mean_y	mean_z
0	FID	ACIS-S-2	7.11	1024	-0.041	0.031	0.006	0.011	0.000000	0.000000	-753.83	-1726.63
1	FID	ACIS-S-4	7.21	1024	-0.052	0.011	0.005	0.008	0.000000	0.000000	2158.72	180.38
2	FID	ACIS-S-5	7.24	1024	0.061	-0.034	0.006	0.010	0.000000	0.000000	-1804.72	175.59
3	GUIDE	106312320	7.15	2048	-0.142	-0.132	0.045	0.070	134.413505	9.271229	-725.43	158.15
4	GUIDE	106306880	8.77	2048	0.111	0.085	0.056	0.091	134.648322	8.383366	2291.91	1503.67
5	GUIDE	106313376	8.88	2048	0.082	0.043	0.063	0.099	134.592798	8.712878	1155.26	1115.58
6	GUIDE	106312984	9.20	2045	-0.013	-0.071	0.090	0.152	134.405151	8.941924	449.80	322.32
7	GUIDE	106308520	9.03	2046	-0.035	0.073	0.073	0.118	134.653649	9.457196	-1524.70	890.97

2.4 Star Slots

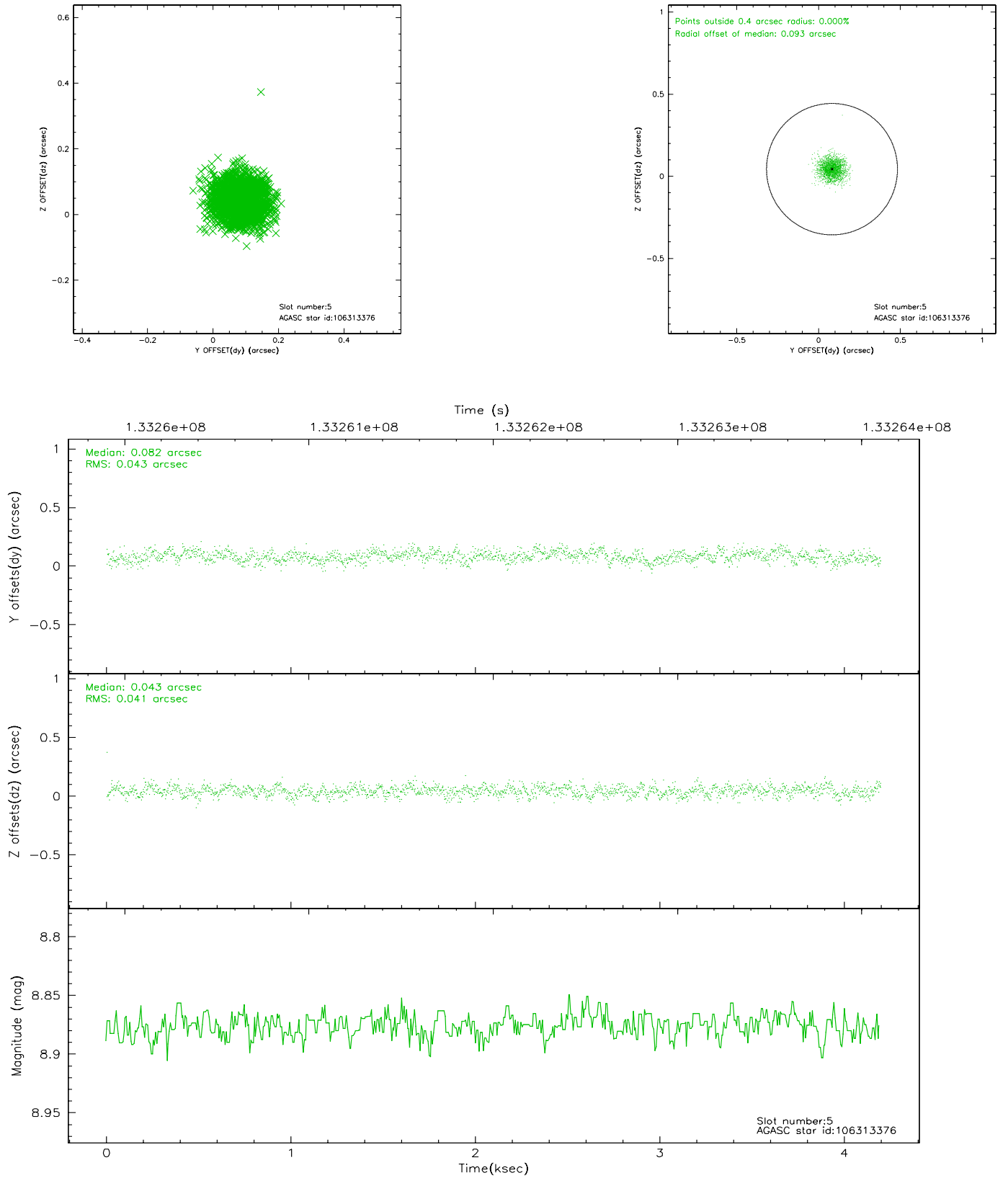
2.4.1 Slot 3



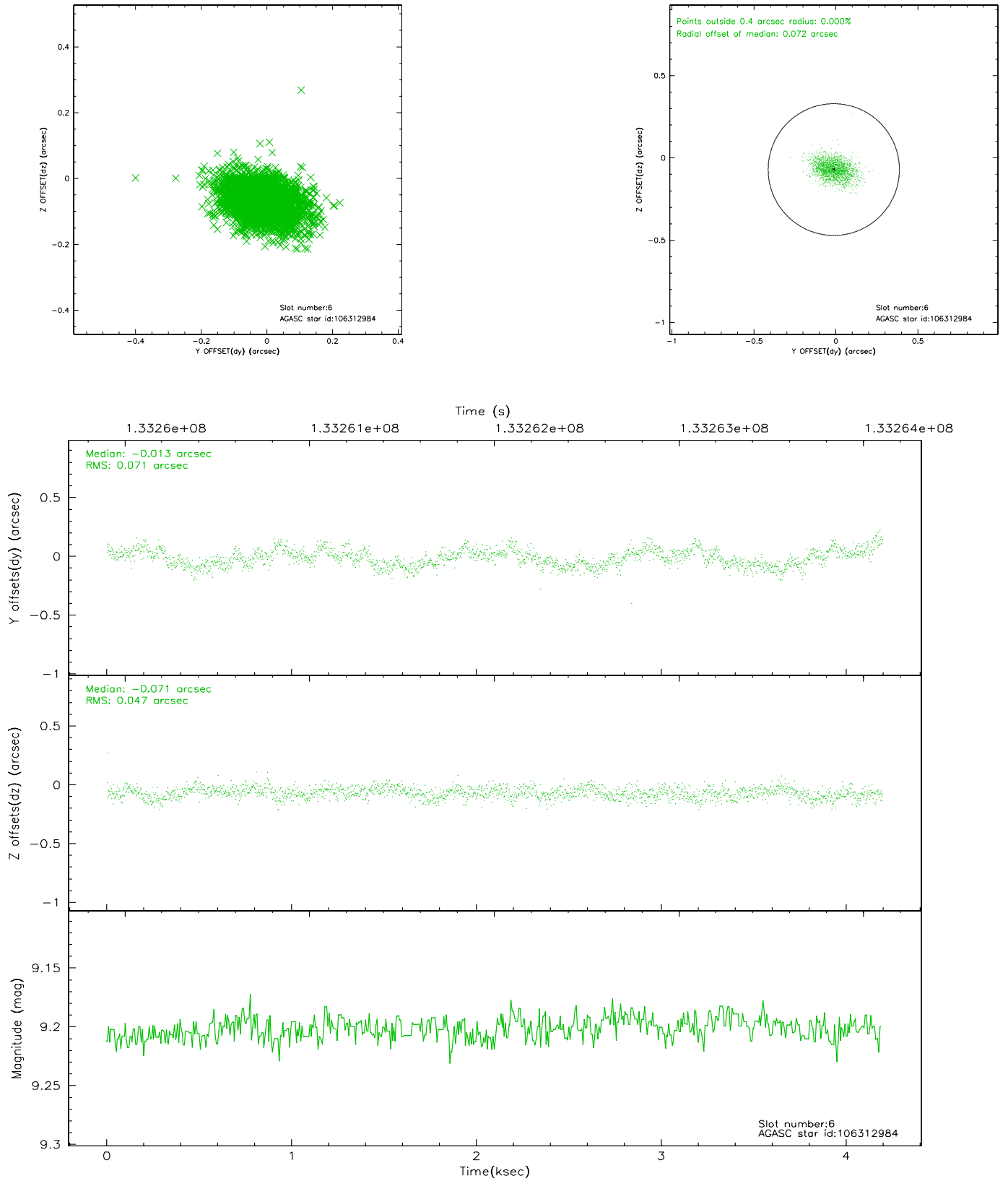
2.4.2 Slot 4



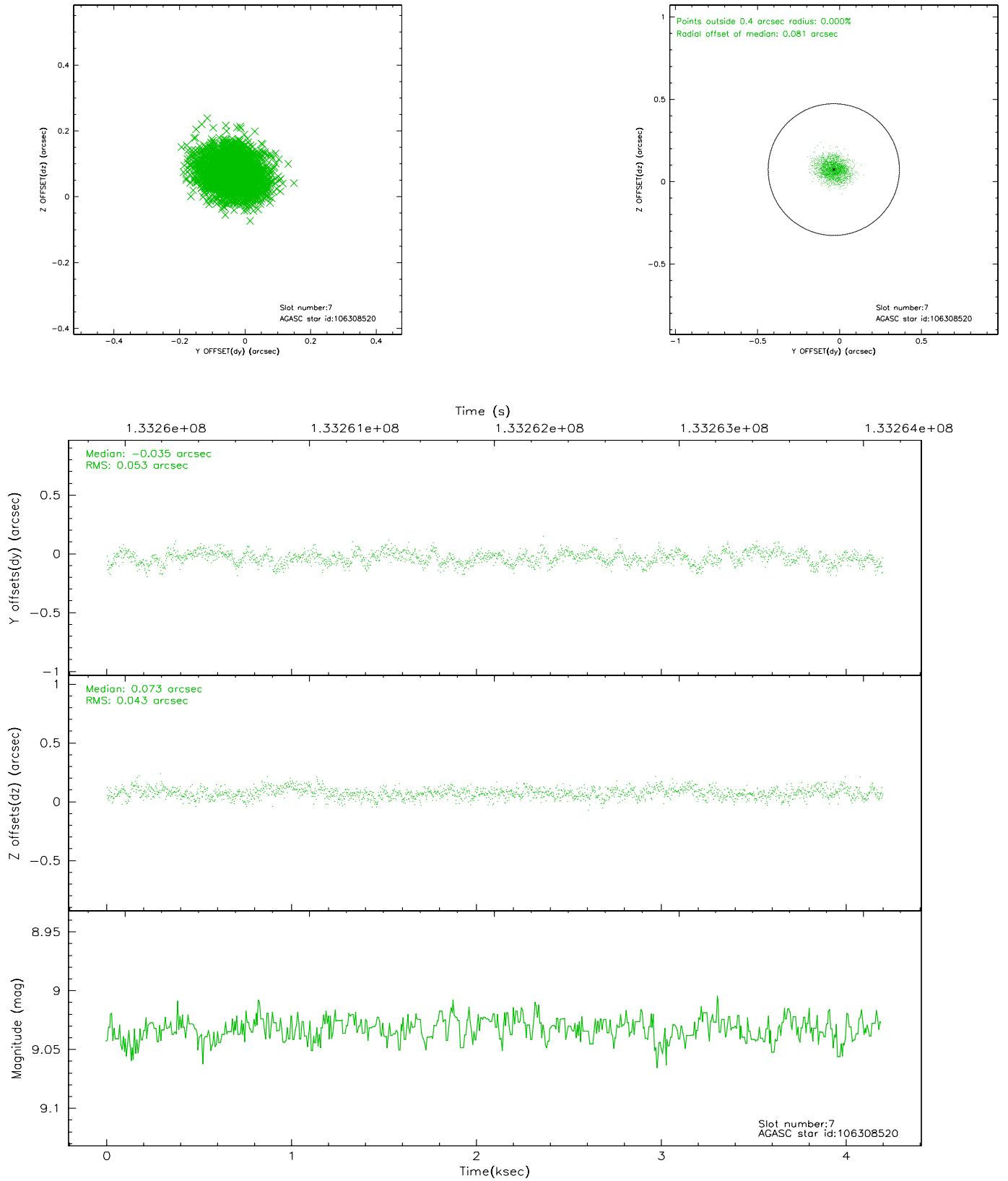
2.4.3 Slot 5



2.4.4 Slot 6

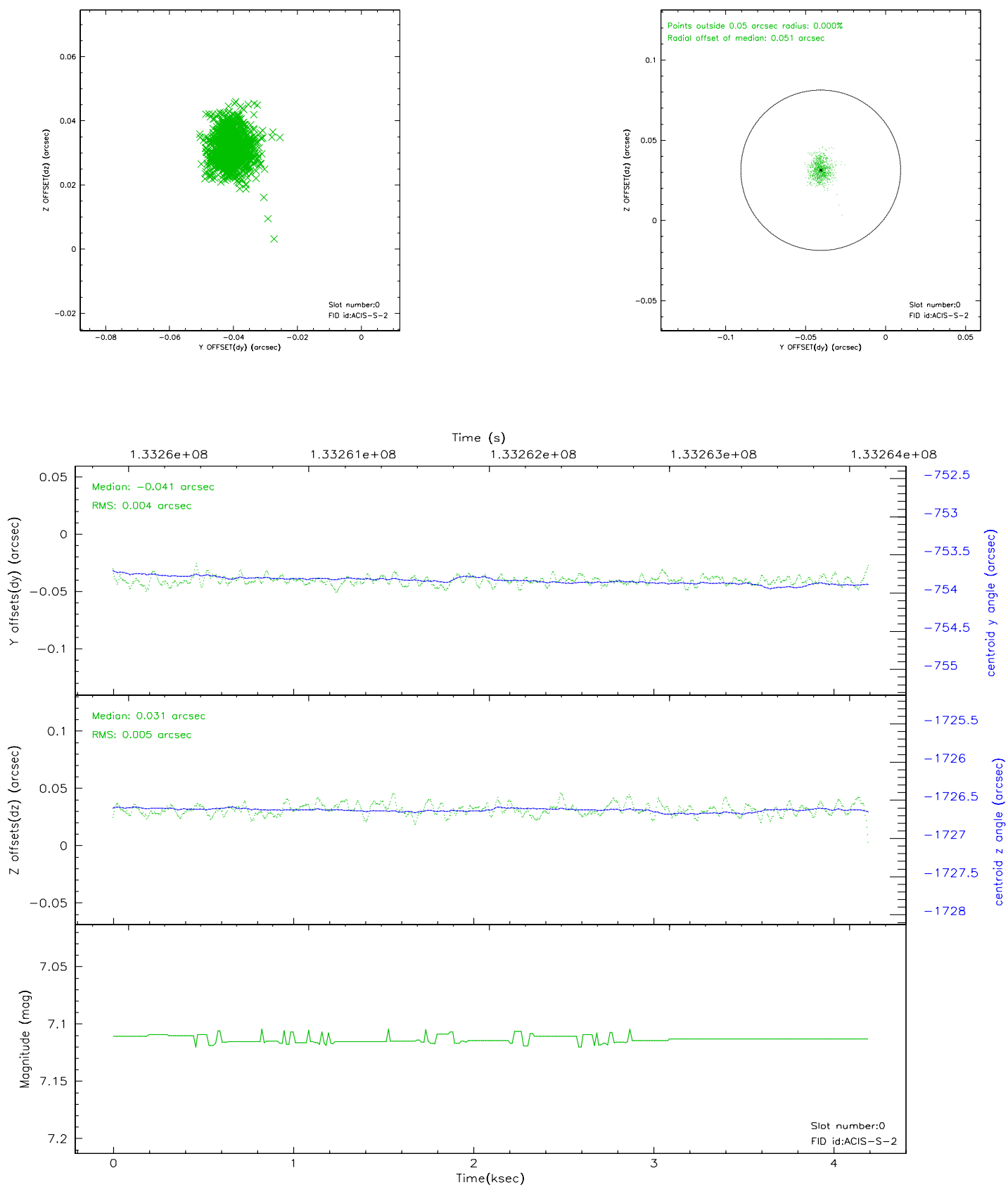


2.4.5 Slot 7

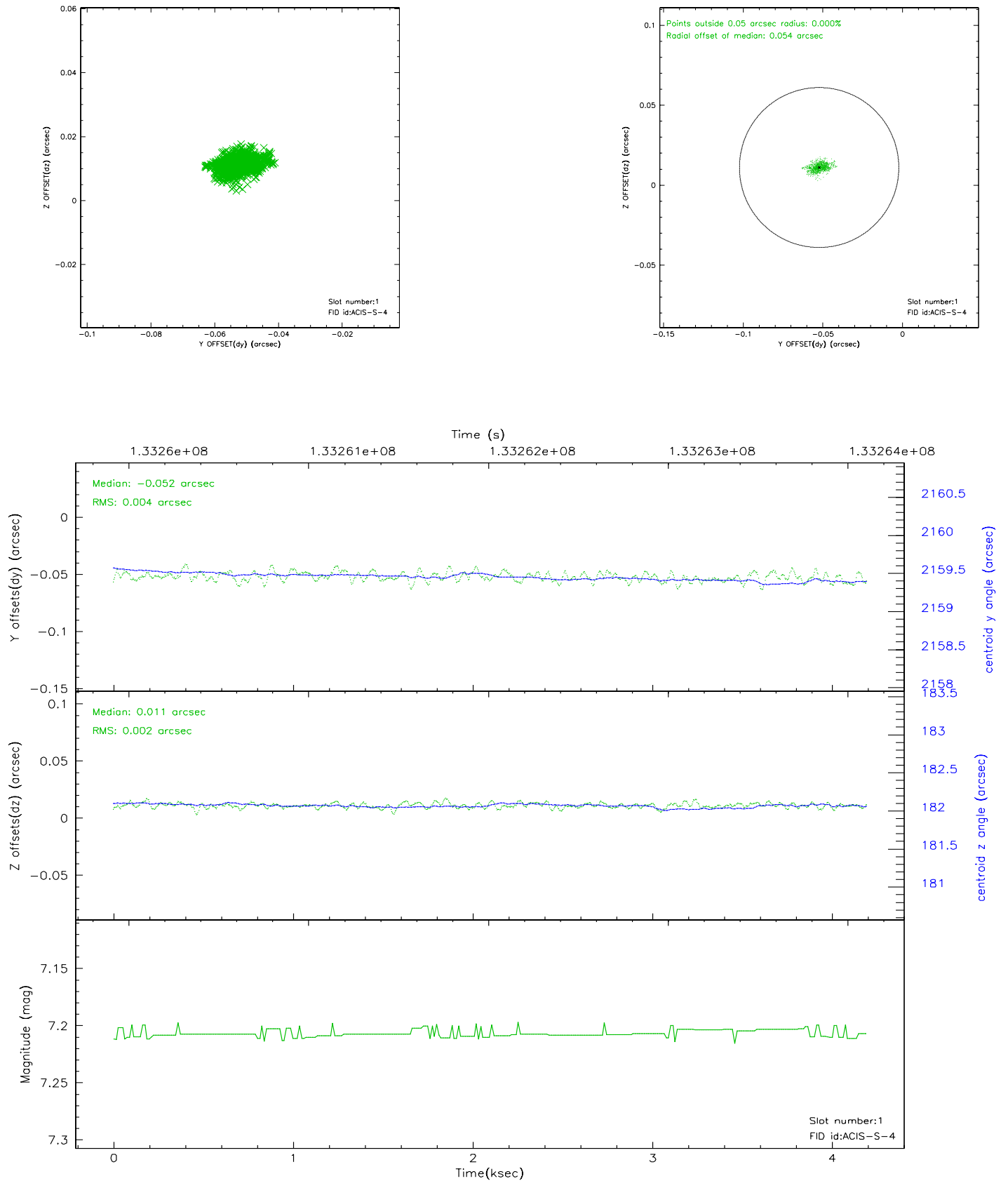


2.5 FID Slots

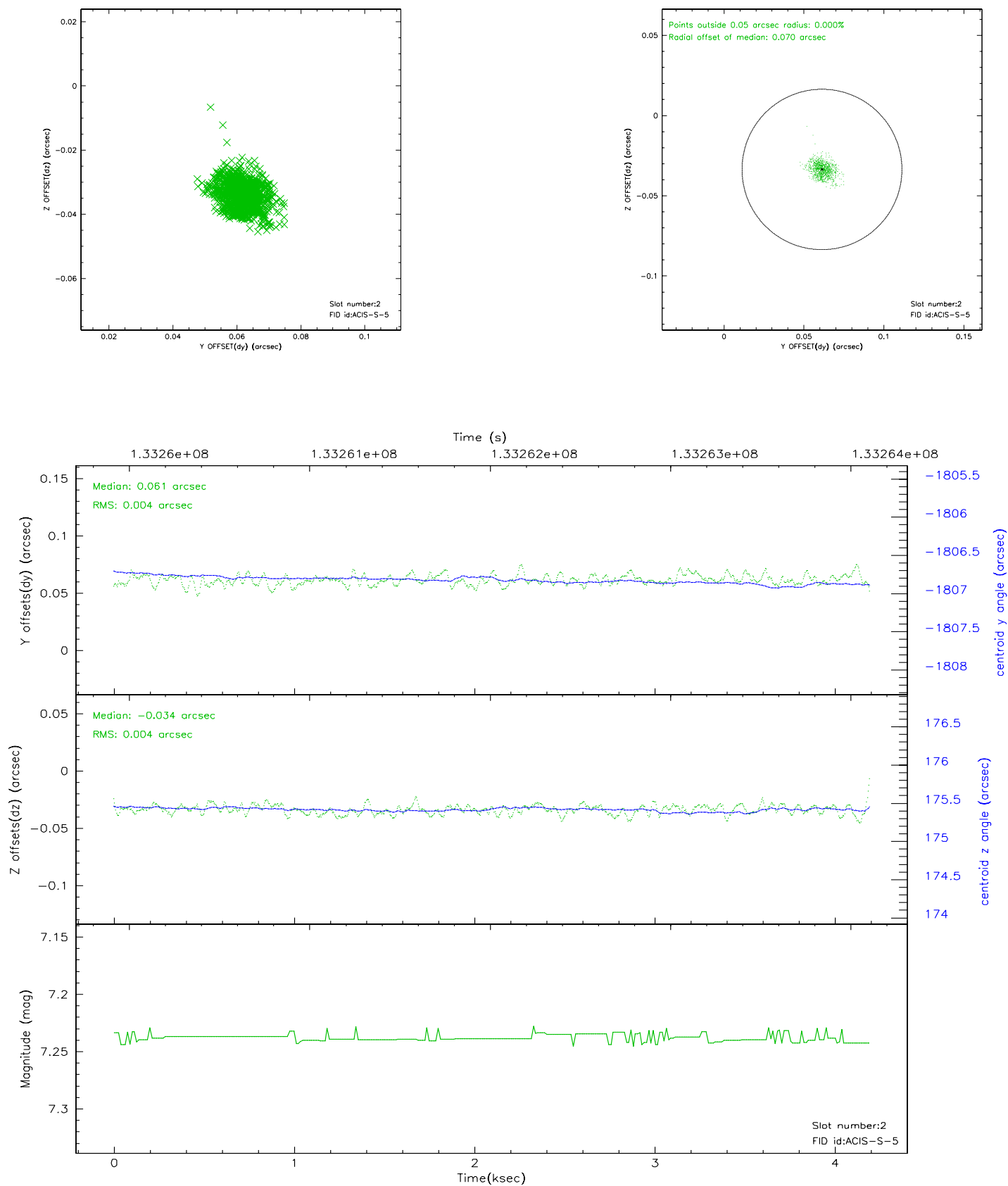
2.5.1 Slot 0



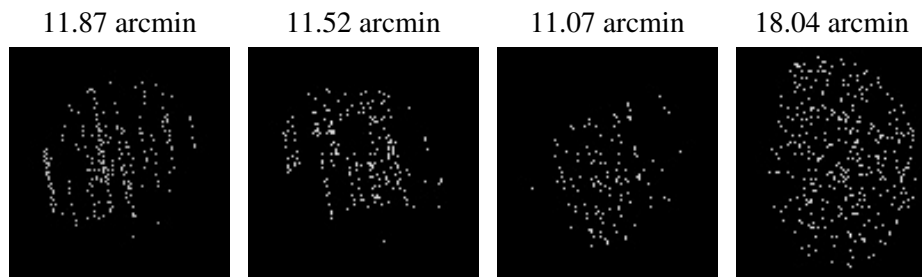
2.5.2 Slot 1



2.5.3 Slot 2



3 Point Sources



A Summary

A.1 Status

V&V Scientist	Jen Lauer
V&V Date (YYYY-MM-DD)	2006.09.08
V&V Edition	1
V&V Disposition and Status	OK
V&V Charge Time	3.756

A.2 Comments