

# V&V Reference Report

## L2 ASCDS Version : 8.4.5

Observation 3027 - L2 Version 3  
Chandra X-Ray Center

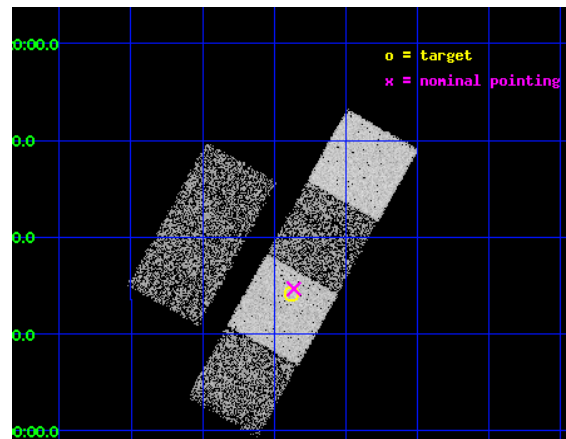
L2 Processing Date : Oct 9 2012

## Contents

<b>1</b>	<b>Front</b>	<b>2</b>
<b>2</b>	<b>OBI</b>	<b>3</b>
2.1	OBI . . . . .	3
2.1.1	Images . . . . .	3
2.1.2	Bias . . . . .	3
2.1.3	Parameters . . . . .	4
2.1.4	Events . . . . .	4
2.2	Compared Parameters . . . . .	5
2.3	Aspect . . . . .	6
2.4	Star Slots . . . . .	9
2.4.1	Slot 3 . . . . .	9
2.4.2	Slot 4 . . . . .	10
2.4.3	Slot 5 . . . . .	11
2.4.4	Slot 6 . . . . .	12
2.4.5	Slot 7 . . . . .	13
2.5	FID Slots . . . . .	14
2.5.1	Slot 0 . . . . .	14
2.5.2	Slot 1 . . . . .	15
2.5.3	Slot 2 . . . . .	16
<b>A</b>	<b>Summary</b>	<b>17</b>
A.1	Status . . . . .	17
A.2	Comments . . . . .	17

# 1 Front

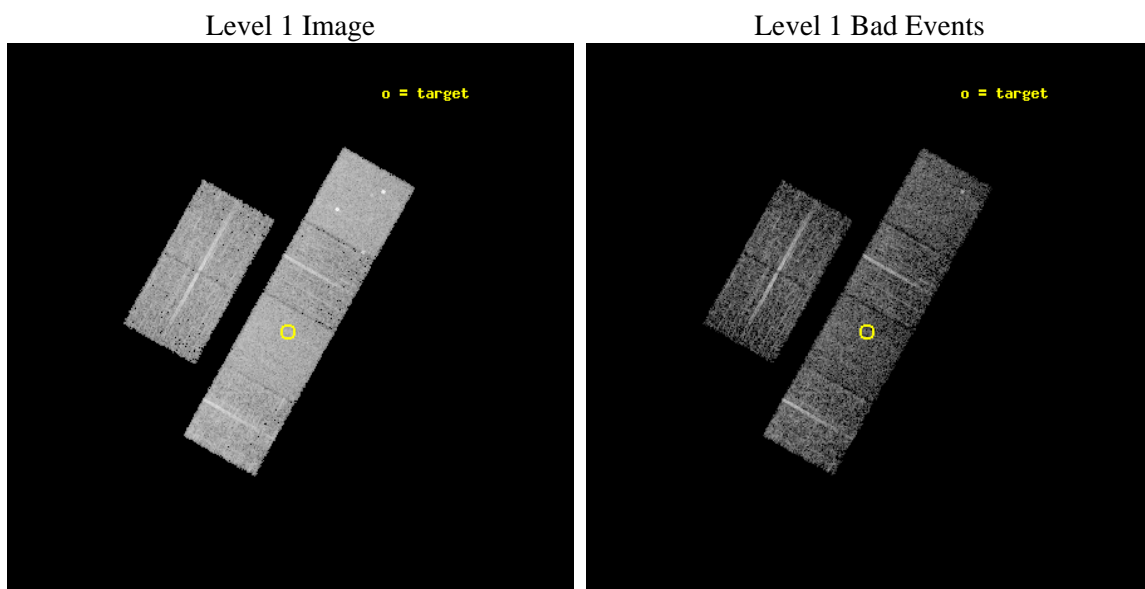
seq_num	700466	Sequence number
obs_id	3027	Observation id
title	A SYSTEMATIC X-RAY SURVEY OF SUBMILLIMETRE-LUMINOUS QUASARS	Propos
observer	Dr Robert Priddey	Principal investigator
object	BRI2235-0301	Source name
dtcycle	0	&#160
cycle	P	events from which exps? Prim/Second/Both
ra_targ	339.59375	Observer's specified target RA [deg]
dec_targ	-2.76475	Observer's specified target Dec [deg]
ra_nom	339.5904638804	Nominal RA [deg]
dec_nom	-2.7555702805811	Nominal Dec [deg]
roll_nom	119.29309941689	Nominal Roll [deg]
revision	3	Processing version of data
ontime	4959.9999815226	Sum of GTIs [s]
livetime	4897.1934752031	Livetime [s]
ontime2	4959.9999815226	Sum of GTIs [s]
ontime3	4959.9999815226	Sum of GTIs [s]
ontime5	4959.9999815226	Sum of GTIs [s]
ontime6	4959.9999815226	Sum of GTIs [s]
ontime7	4959.9999815226	Sum of GTIs [s]
ontime8	4959.9999815226	Sum of GTIs [s]
l2events	50690	Number of level 2 events



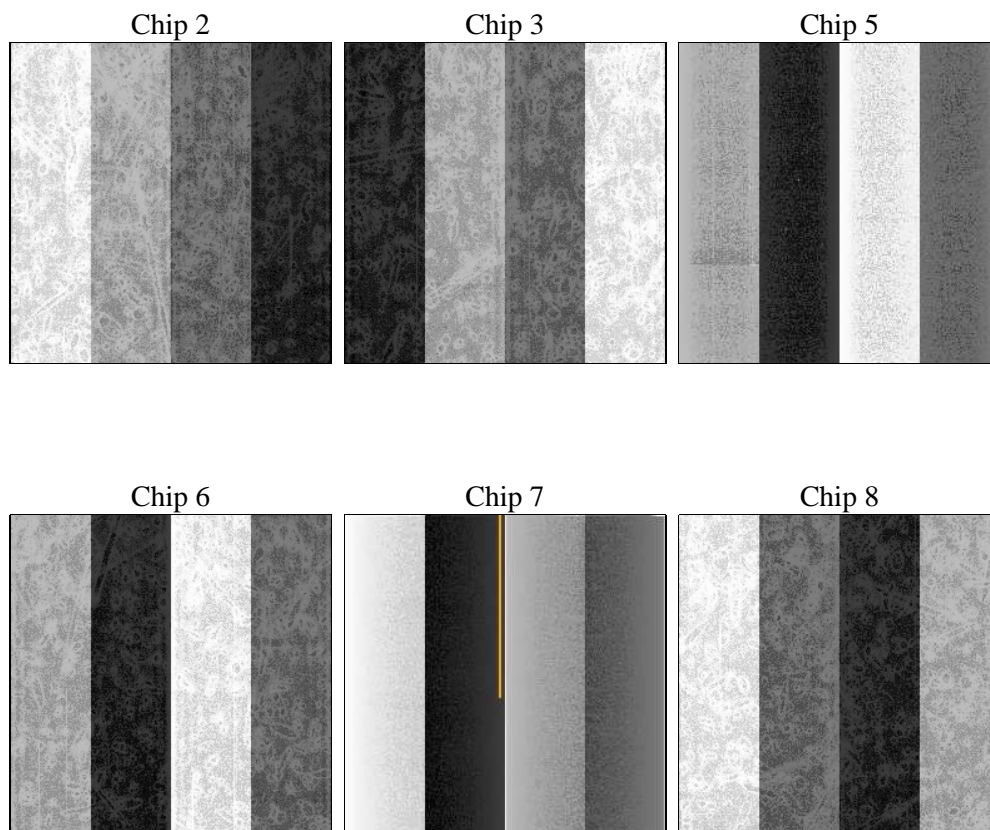
## 2 OBI

### 2.1 OBI

#### 2.1.1 Images



#### 2.1.2 Bias



### 2.1.3 Parameters

obi_num	0	Obi number	sched_exp_time	5000.000000	[s] Scheduled observation exposure time
ascdsver	8.4.5	Processing system revision	ontime	4959.9999815226	Sum of GTIs [s]
caldbver	4.5.2	&#160	ontime2	4959.9999815226	Sum of GTIs [s]
date	2012-10-10T01:00:52	Date and time of file creation	ontime3	4959.9999815226	Sum of GTIs [s]
revision	3	Processing version of data	ontime5	4959.9999815226	Sum of GTIs [s]
			ontime6	4959.9999815226	Sum of GTIs [s]
			ontime7	4959.9999815226	Sum of GTIs [s]
			ontime8	4959.9999815226	Sum of GTIs [s]
			l1events	231173	Number of level 1 events

### 2.1.4 Events

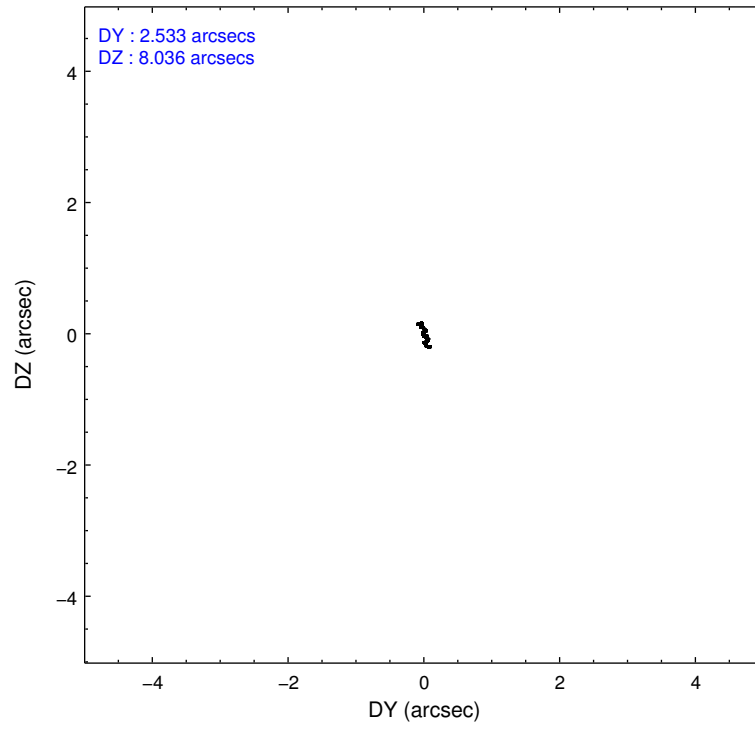
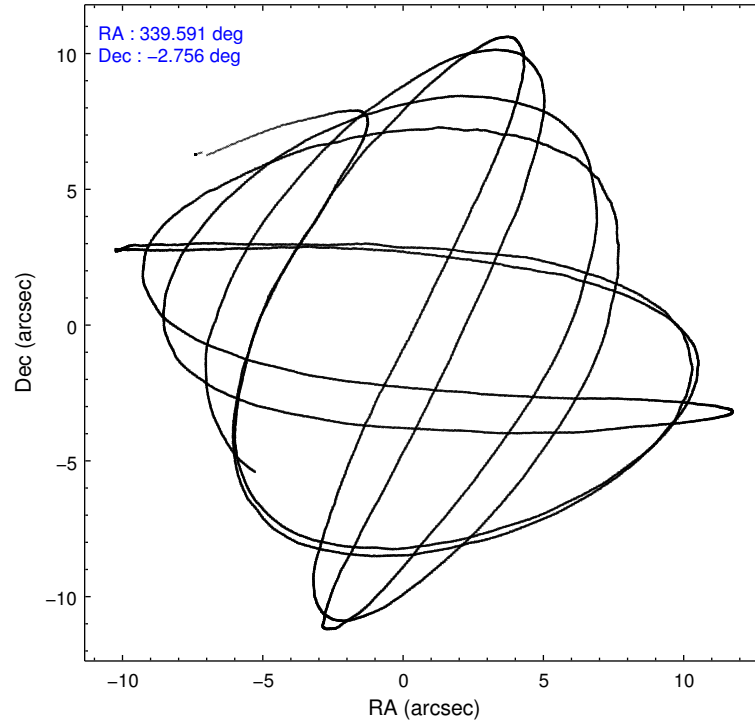
	ccd 2	ccd 3	ccd 5	ccd 6	ccd 7	ccd 8		ccd 2	ccd 3	ccd 5	ccd 6	ccd 7	ccd 8
level 1 events	33052	31322	48297	33029	42825	42648	grade 0 events	1640	1588	2760	1518	1600	2664
rejected events	29232	27713	25859	29135	25313	34077		4%	5%	5%	4%	3%	6%
rejected %	88%	88%	53%	88%	59%	79%	grade 1 events	12	18	87	12	44	19
								0%	0%	0%	0%	0%	0%
							grade 2 events	808	688	6691	799	3545	1916
								2%	2%	13%	2%	8%	4%
							grade 3 events	375	350	901	407	1547	908
								1%	1%	1%	1%	3%	2%
							grade 4 events	349	371	854	376	1546	782
								1%	1%	1%	1%	3%	1%
							grade 5 events	1143	1319	3567	1468	3985	1890
								3%	4%	7%	4%	9%	4%
							grade 6 events	650	616	11243	797	9284	2320
								1%	1%	23%	2%	21%	5%
							grade 7 events	28075	26372	22194	27652	21274	32149
								84%	84%	45%	83%	49%	75%

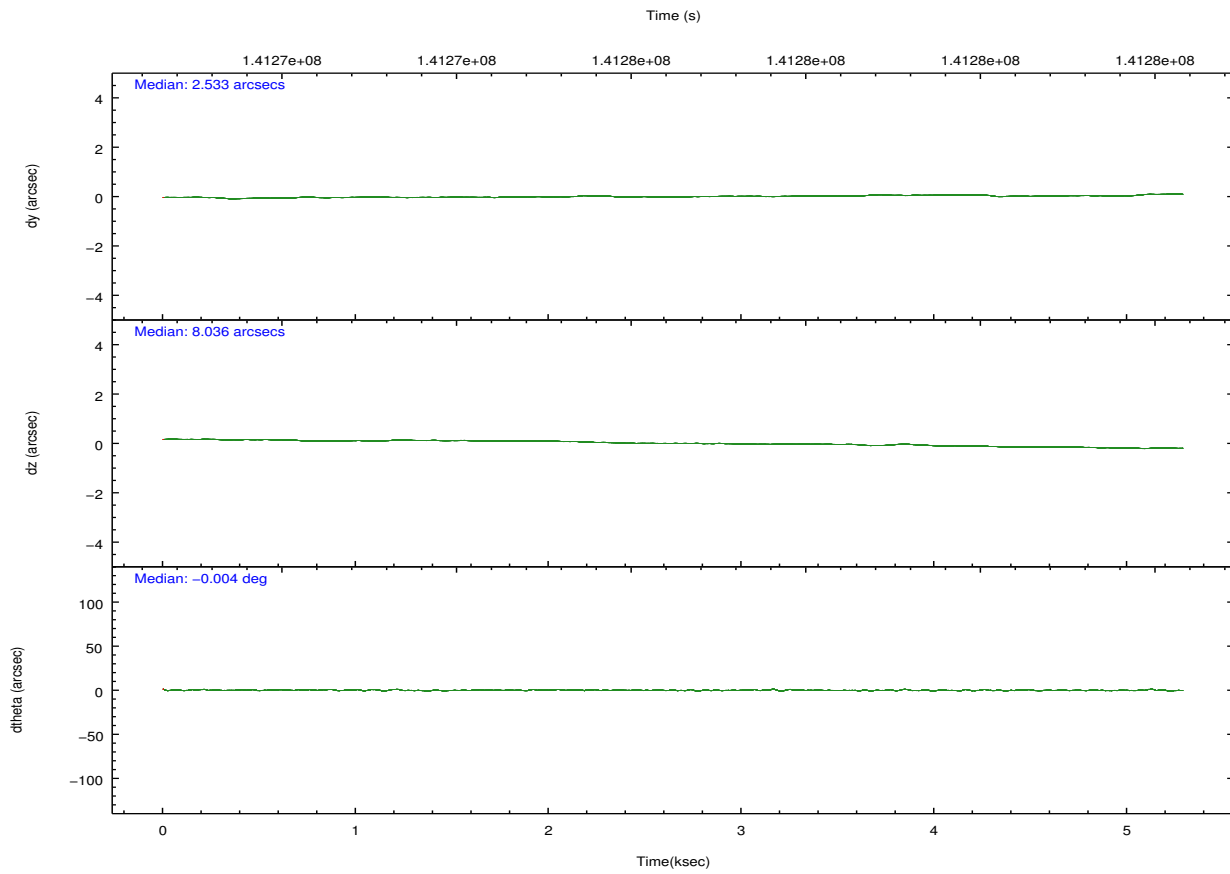
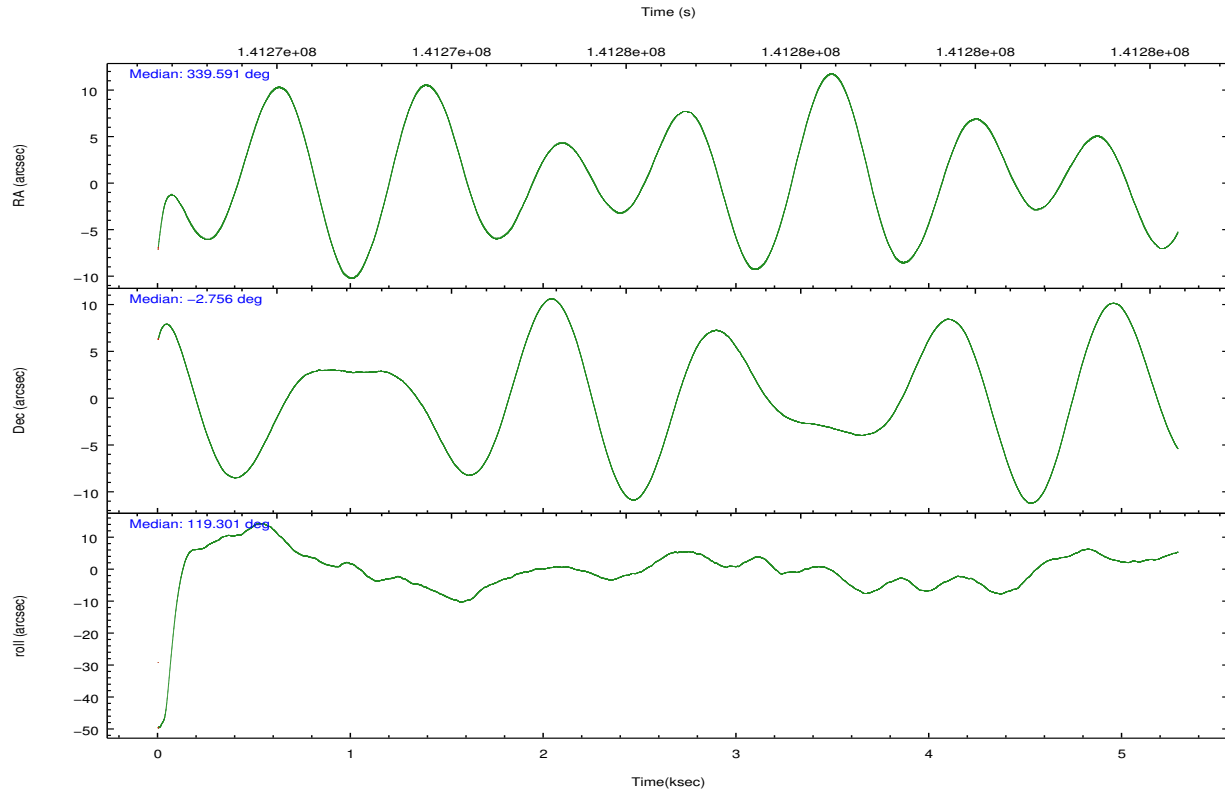


## 2.2 Compared Parameters

Parameter	Planned	Actual	Parameter	Planned	Actual
Instrument	ACIS	ACIS	Obspar format version number	7	7
Detector	ACIS-235678	ACIS-235678	Obspar file type	PREDICTED	ACTUAL
Grating	NONE	NONE	Obspar update status	NONE	UPDATED
Data mode	FAINT	FAINT	Number of optional ACIS chips dropped	0	0
Observation mode	POINTING	POINTING	On-chip summing requested	N	N
[deg] Pointing RA	339.614196	339.5904638803986	Subarray requested	NONE	NONE
[deg] Pointing Dec	-2.769205	-2.755570280581106	Alternating exposures requested	N	N
[deg] Pointing Roll	119.137743	119.2930994168894	[s] Primary exposure time	0.000000	3.2
[mm] SIM focus pos	-0.684267	-0.6828225247311905			
[mm] SIM defocus	0	0.001444936568705701			
[mm] SIM translation stage pos	-190.132523	-190.1425803651734			
[mm] SIM translation stage offset	0	0.01005778216563158			
[s] Observation start time (MET)	141272886.184000	141271862.6845			
Observation start date	2002-06-24T02:27:02	2002-06-24T02:11:02			
[s] Observation end time (MET)	141277886.184000	141278496.99727			
Observation end date	2002-06-24T03:50:22	2002-06-24T04:01:36			
Read mode	TIMED	TIMED			

## 2.3 Aspect



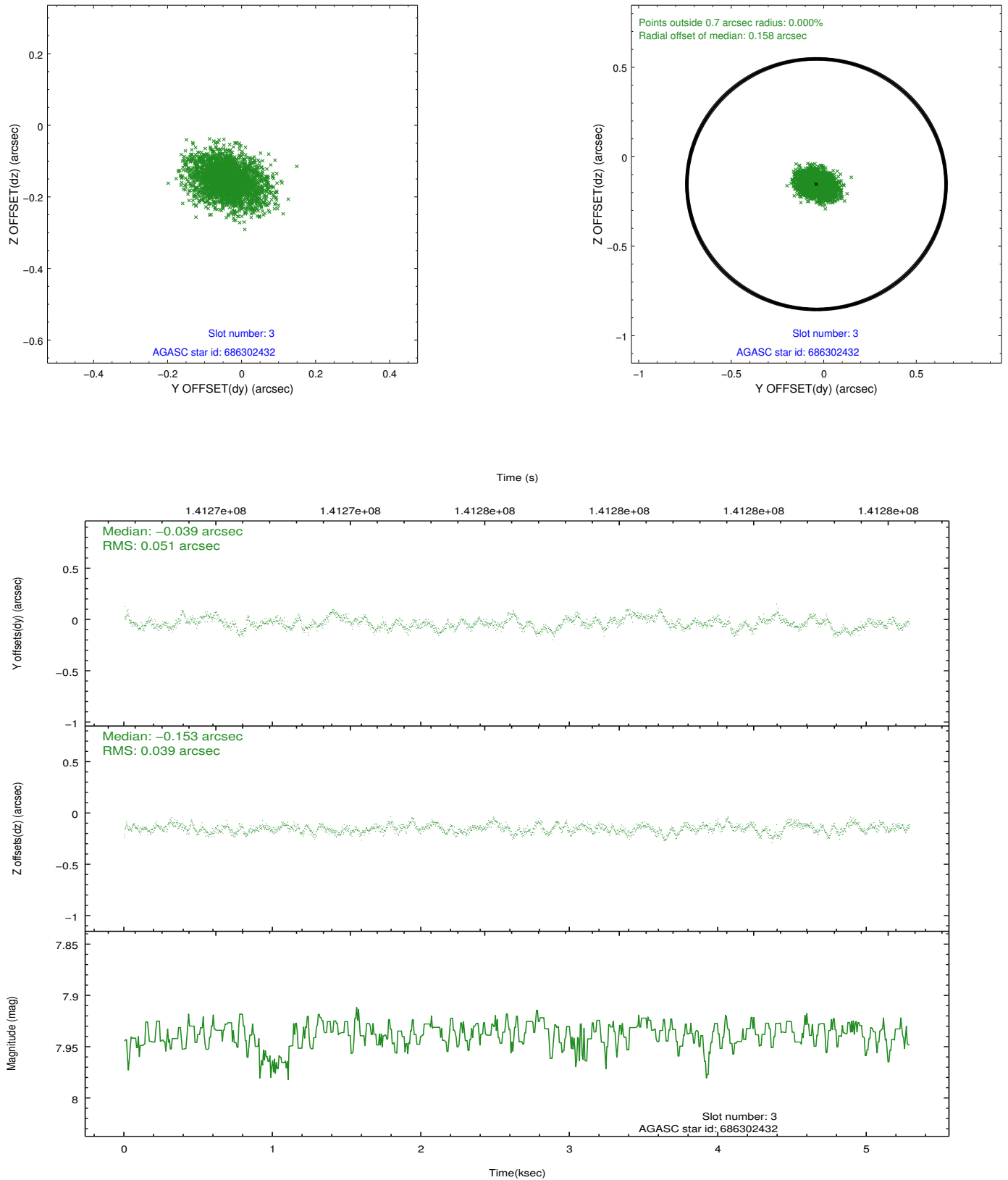


### Slot Statistics

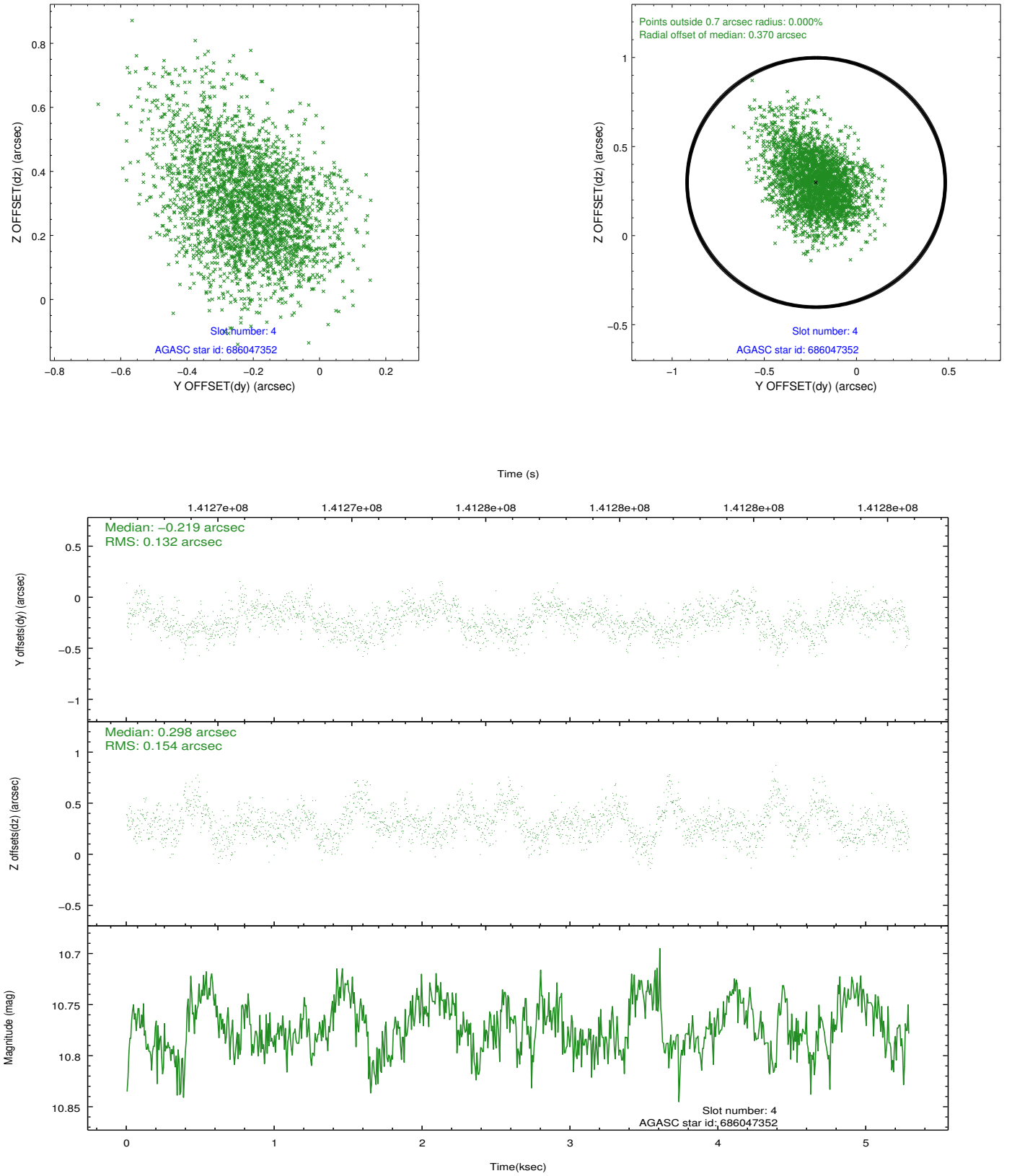
slot	status	id	mag	n_pts	med_dy	med_dz	dr1	dr2	ra	dec	mean_y	mean_z
0	FID	ACIS-S-2	7.11	1291	-0.008	0.003	0.007	0.011	0.000000	0.000000	-755.18	-1729.17
1	FID	ACIS-S-4	7.20	1291	-0.049	0.003	0.006	0.010	0.000000	0.000000	2157.55	178.11
2	FID	ACIS-S-5	7.24	1291	0.025	0.004	0.007	0.012	0.000000	0.000000	-1806.51	173.11
3	GUIDE	686302432	7.94	2581	-0.039	-0.153	0.067	0.113	339.735415	-3.025854	-1018.79	69.43
4	GUIDE	686047352	10.77	2579	-0.219	0.298	0.210	0.364	340.016753	-2.239482	959.92	-2193.05
5	GUIDE	686294840	8.15	2580	-0.009	-0.149	0.083	0.134	339.527749	-2.898612	-254.71	497.67
6	GUIDE	686432304	9.75	2578	0.143	0.121	0.119	0.185	340.023808	-3.179311	-2006.30	-566.35
7	GUIDE	686302544	9.68	2578	0.130	-0.119	0.098	0.162	339.763105	-3.182117	-1559.18	256.36

## 2.4 Star Slots

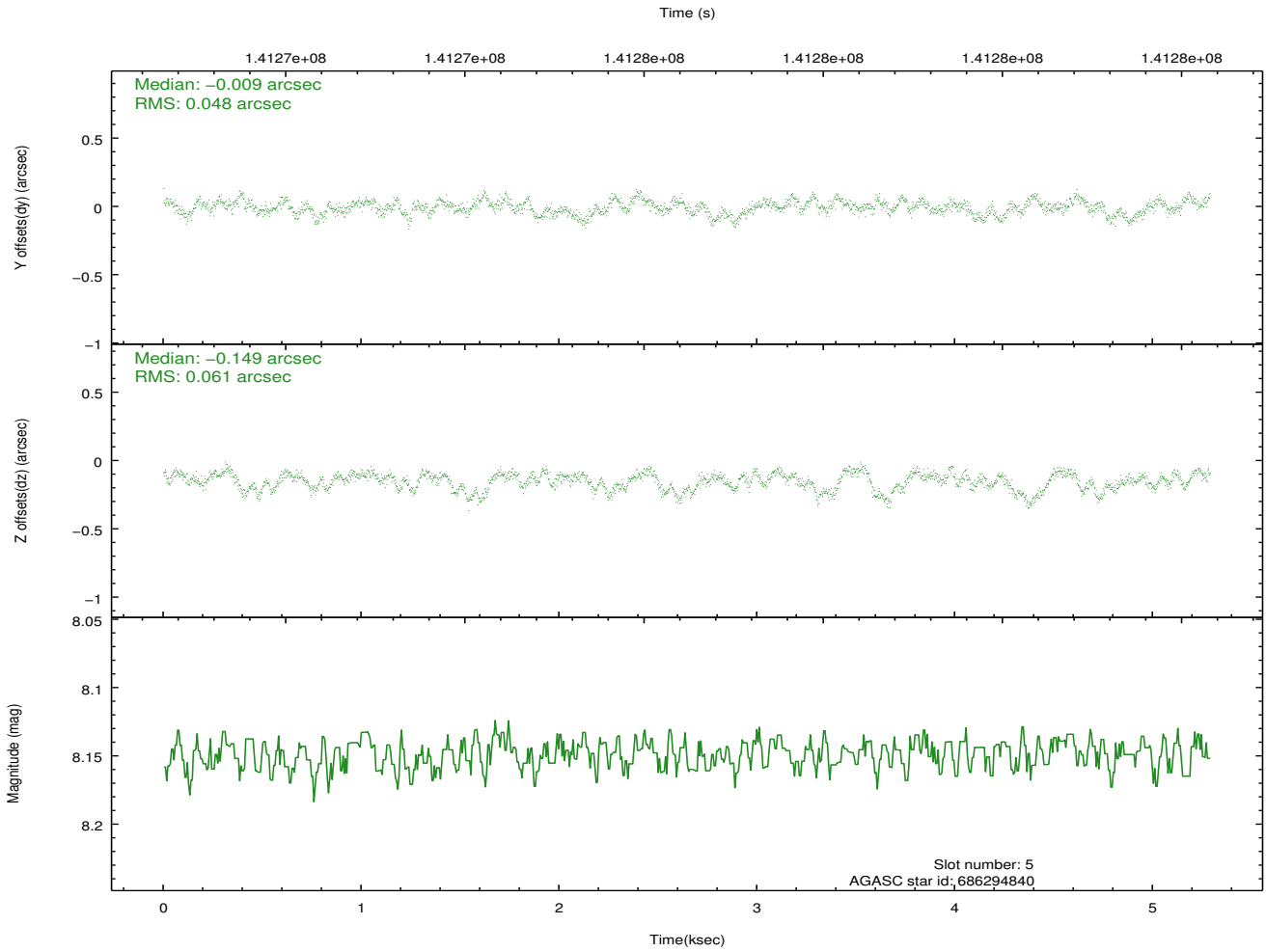
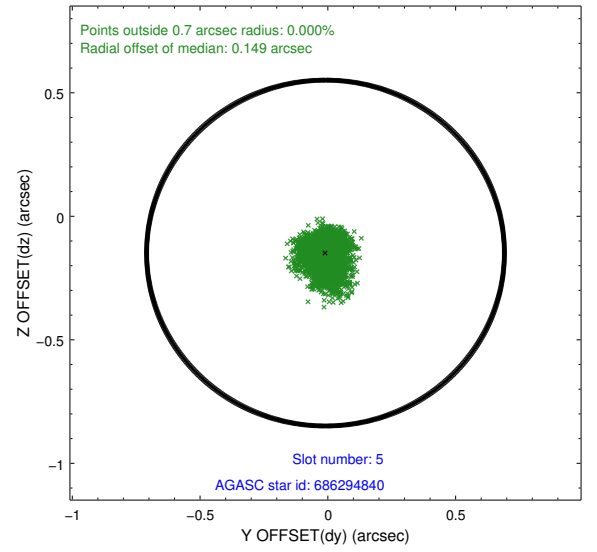
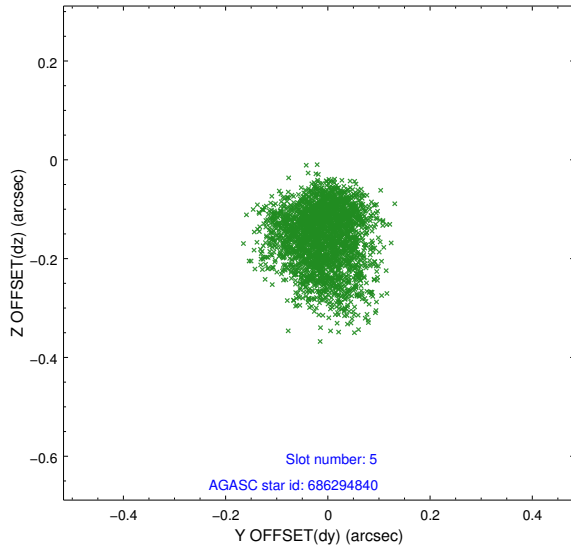
### 2.4.1 Slot 3



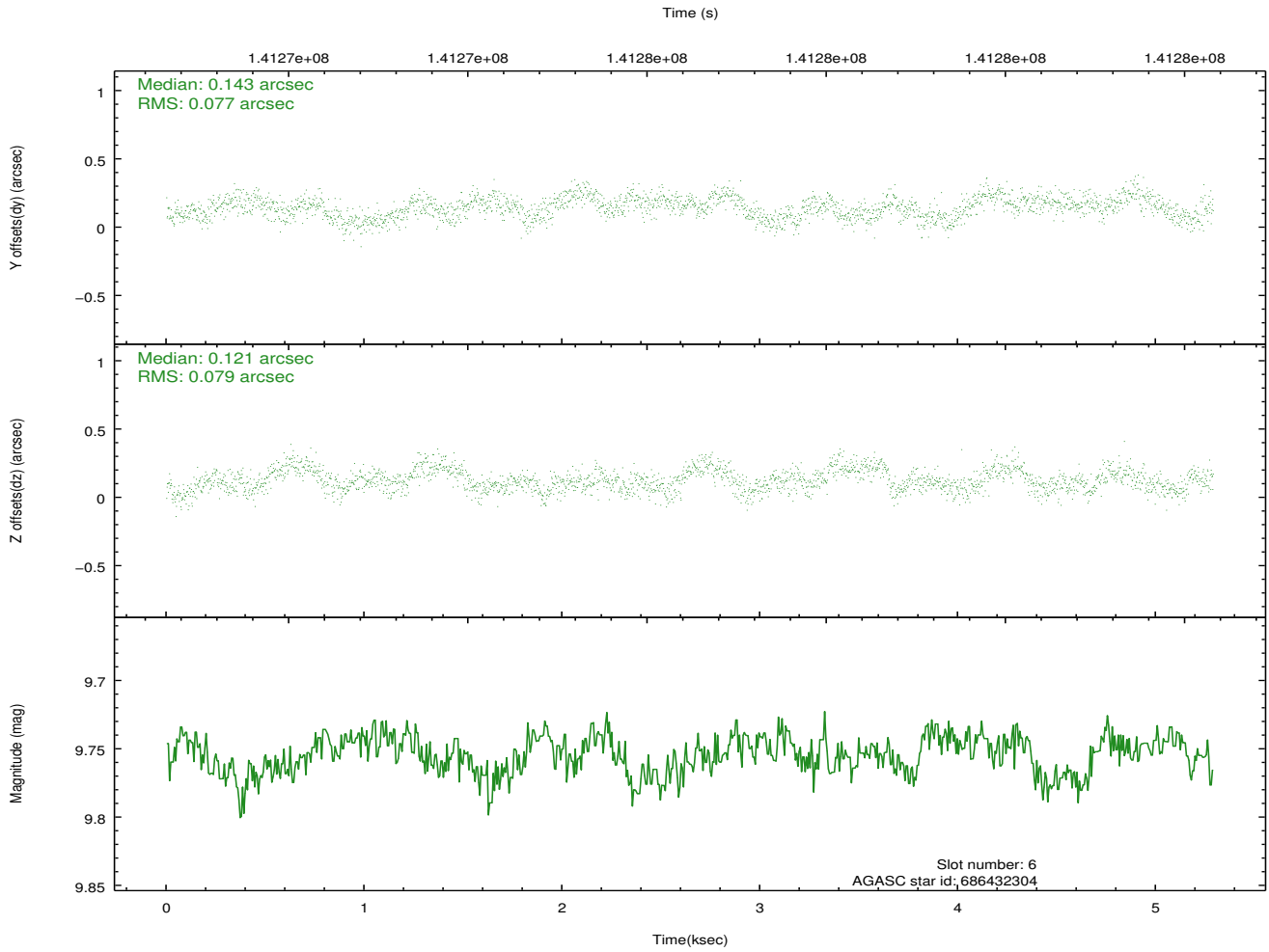
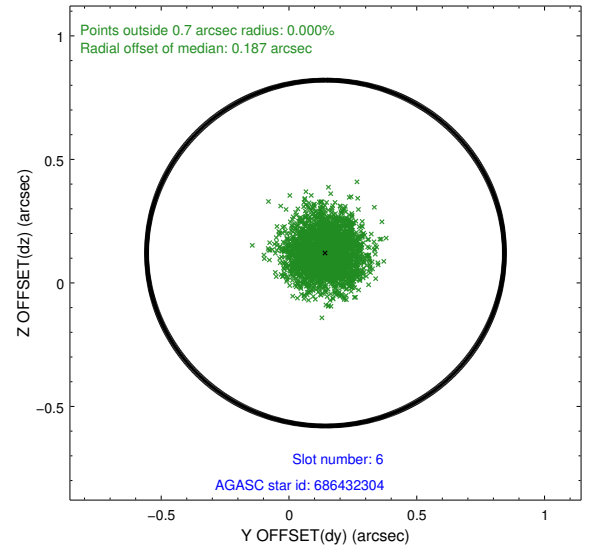
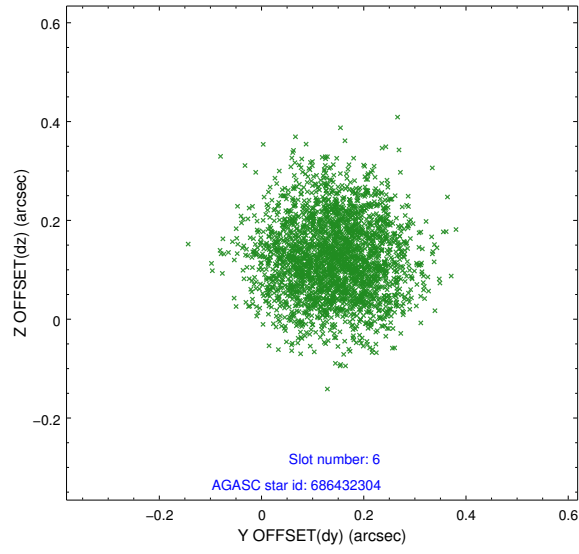
## 2.4.2 Slot 4



### 2.4.3 Slot 5

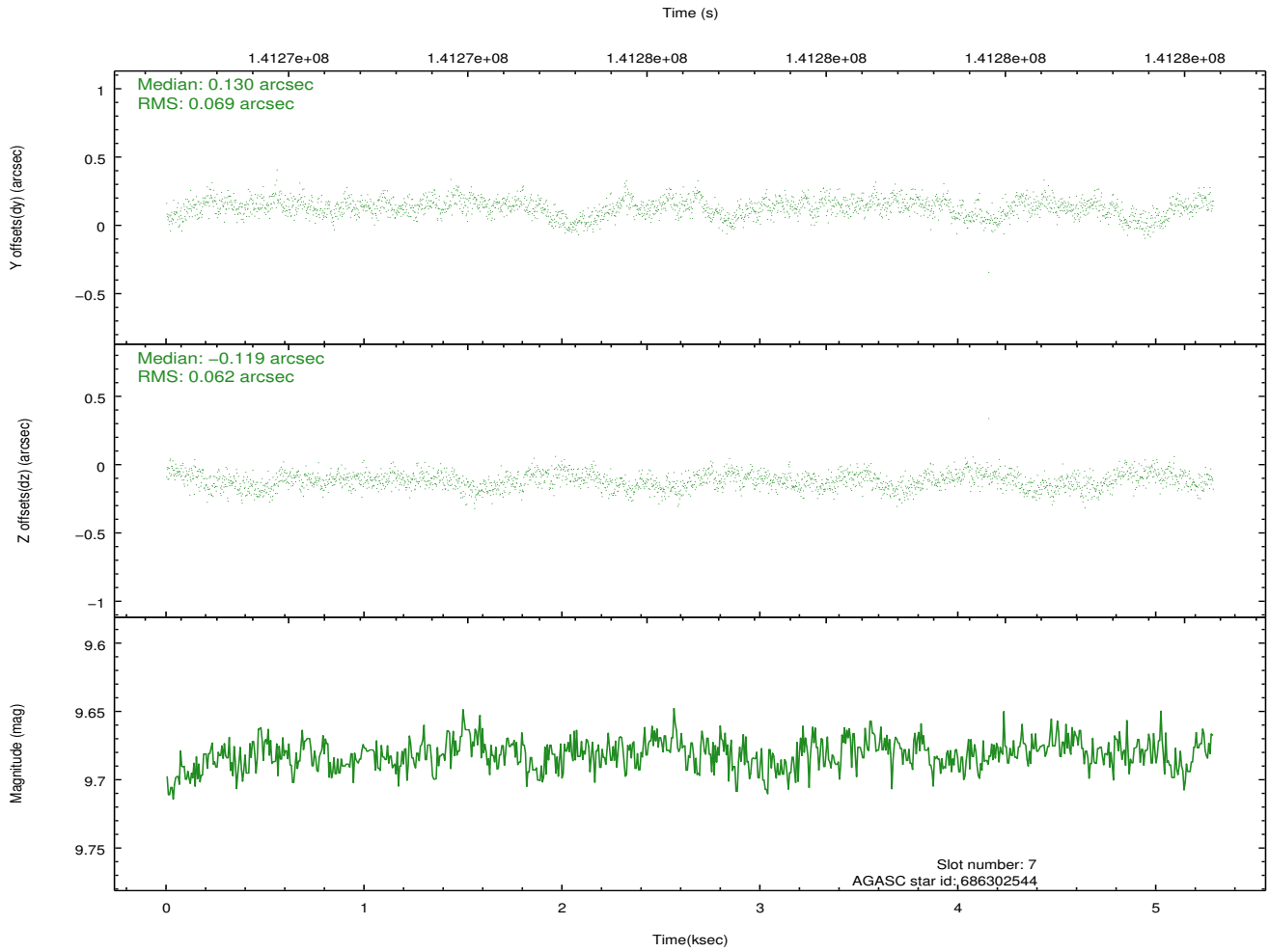
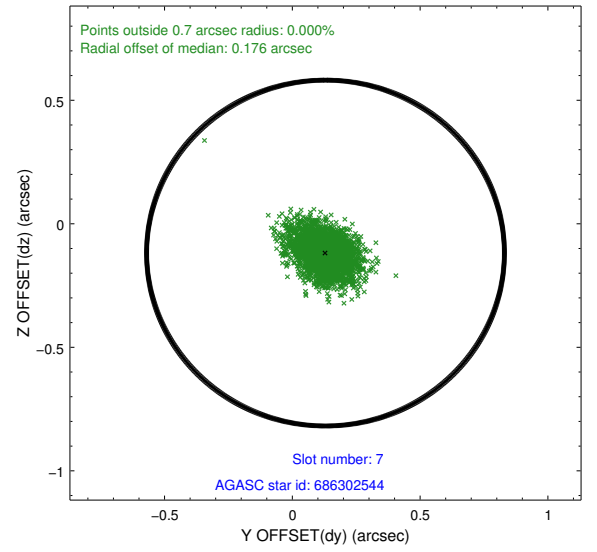
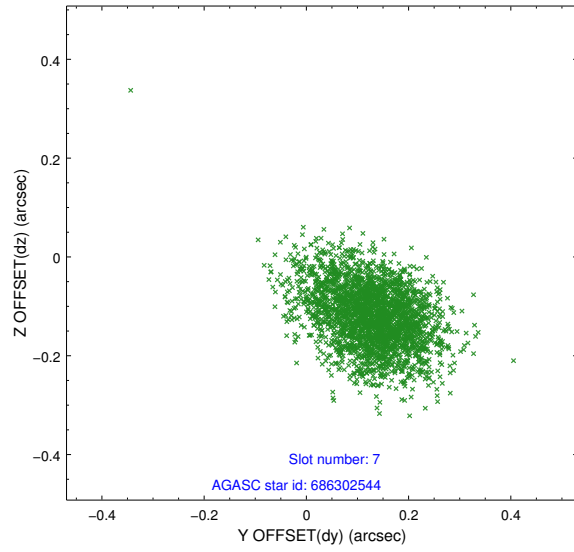


## 2.4.4 Slot 6



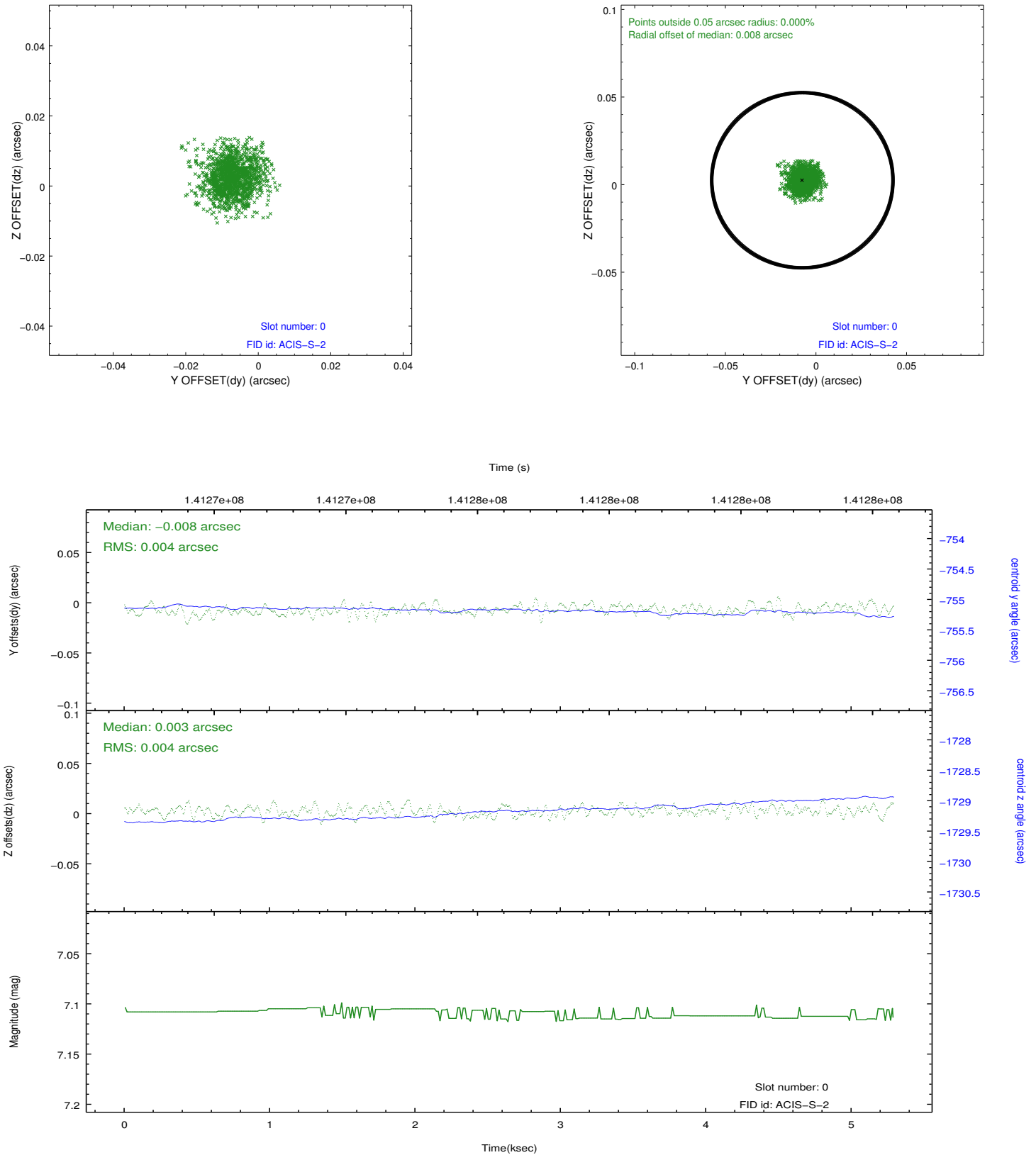


## 2.4.5 Slot 7

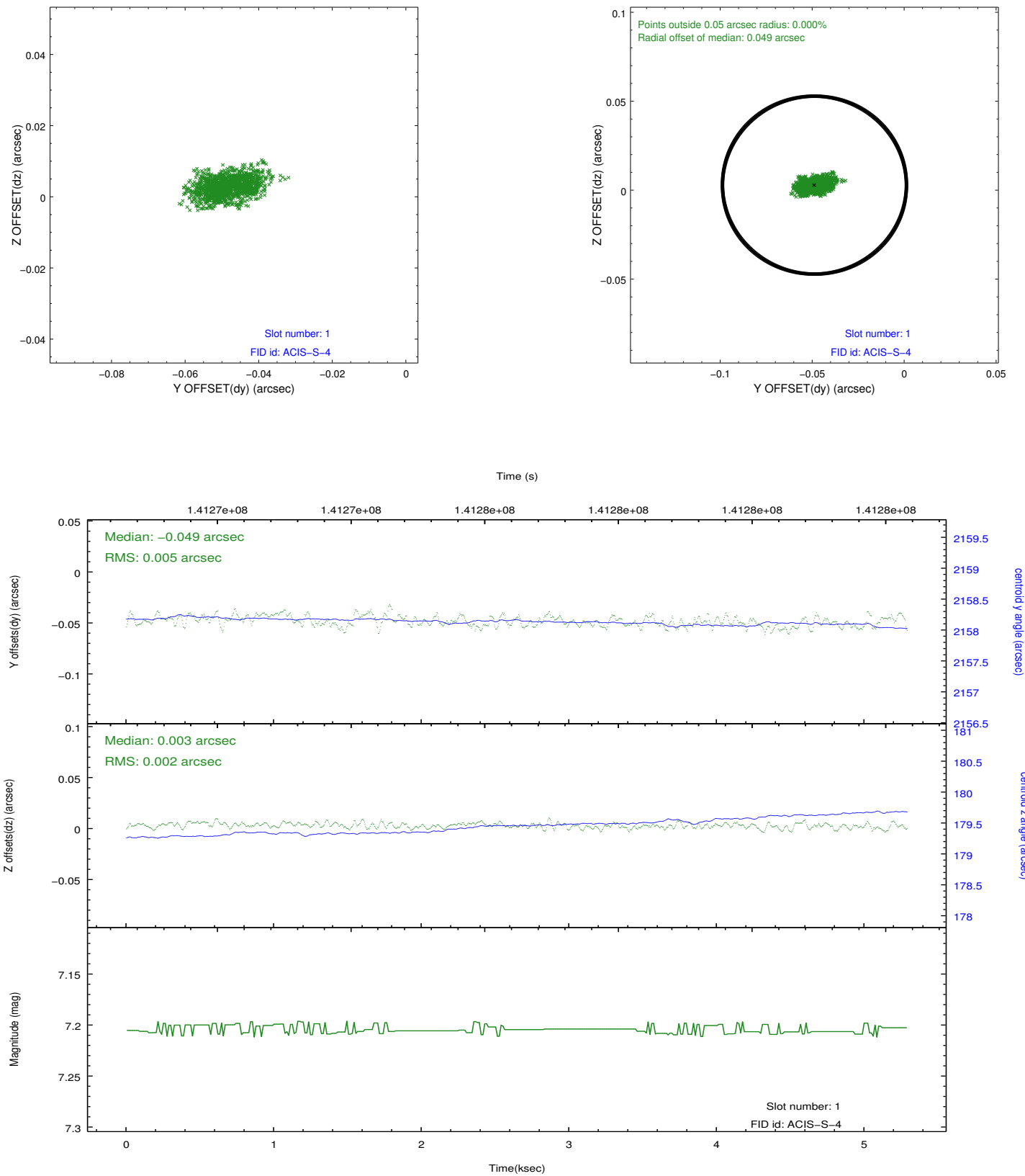


## 2.5 FID Slots

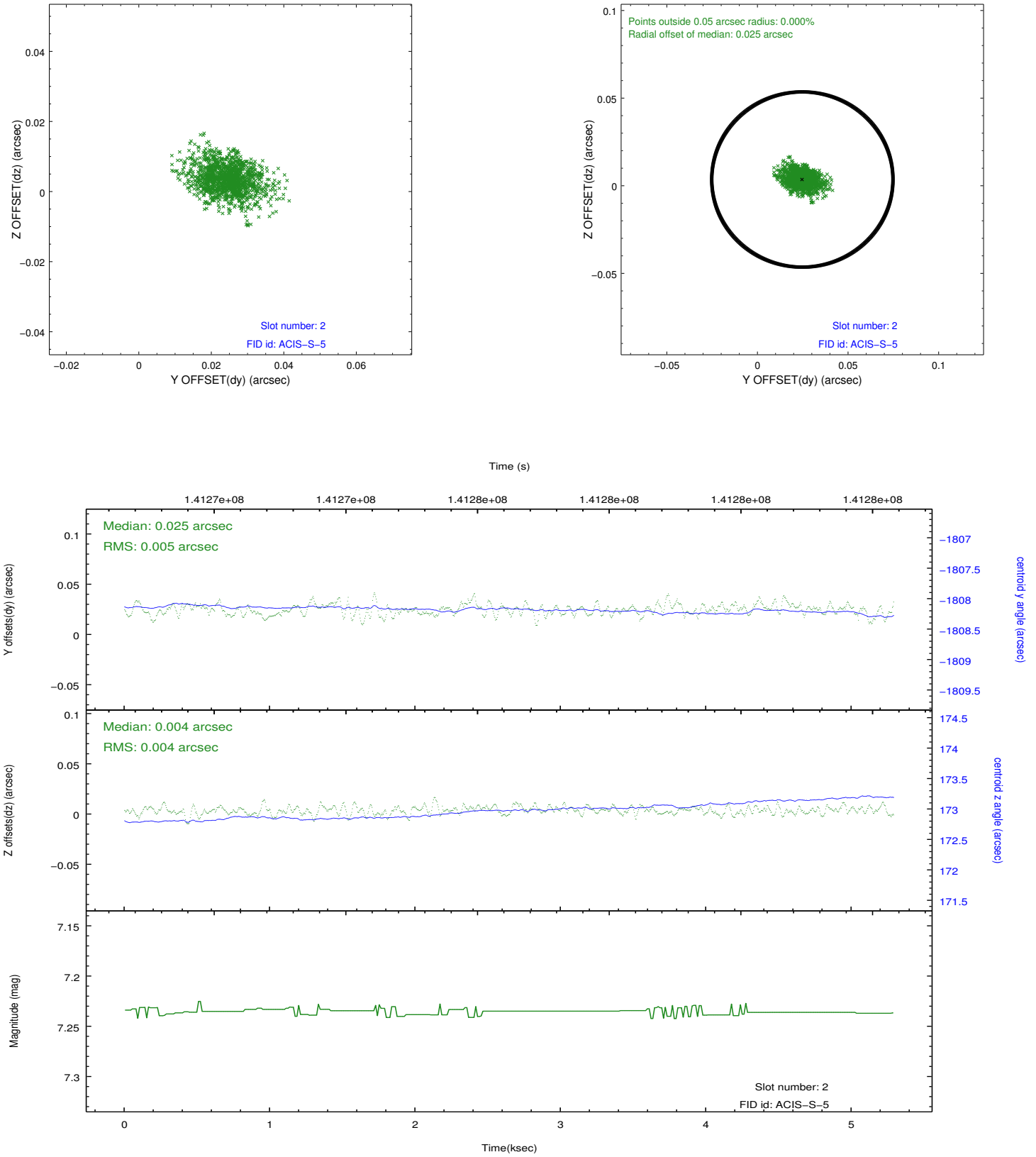
### 2.5.1 Slot 0



## 2.5.2 Slot 1



### 2.5.3 Slot 2



## A Summary

### A.1 Status

V&V Scientist	Jen Lauer
V&V Date (YYYY-MM-DD)	2012.10.19
V&V Edition	1
V&V Disposition and Status	OK
V&V Charge Time	4.963

### A.2 Comments