

V&V Reference Report

L2 ASCDS Version : 7.6.9

Observation 3017 - L2 Version 001
Chandra X-Ray Center

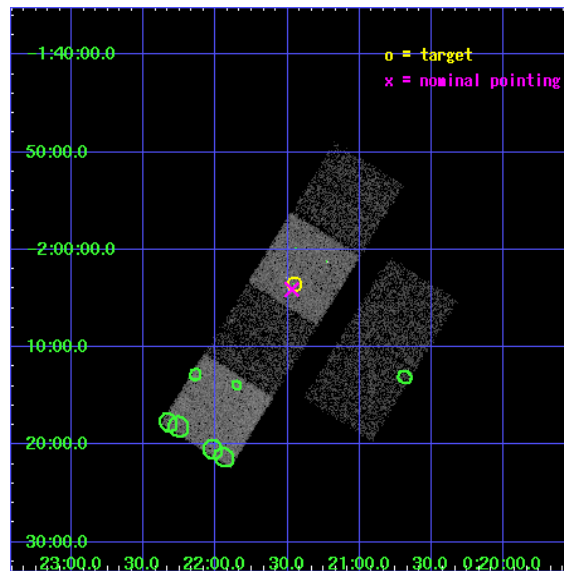
L2 Processing Date : Oct 7 2006

Contents

1	Front	2
2	OBI	3
2.1	OBI	3
2.1.1	Images	3
2.1.2	Bias	3
2.1.3	Parameters	4
2.1.4	Events	4
2.2	Compared Parameters	5
2.3	Aspect	6
2.4	Star Slots	9
2.4.1	Slot 3	9
2.4.2	Slot 4	10
2.4.3	Slot 5	11
2.4.4	Slot 6	12
2.4.5	Slot 7	13
2.5	FID Slots	14
2.5.1	Slot 0	14
2.5.2	Slot 1	15
2.5.3	Slot 2	16
3	Point Sources	17
A	Summary	18
A.1	Status	18
A.2	Comments	18

1 Front

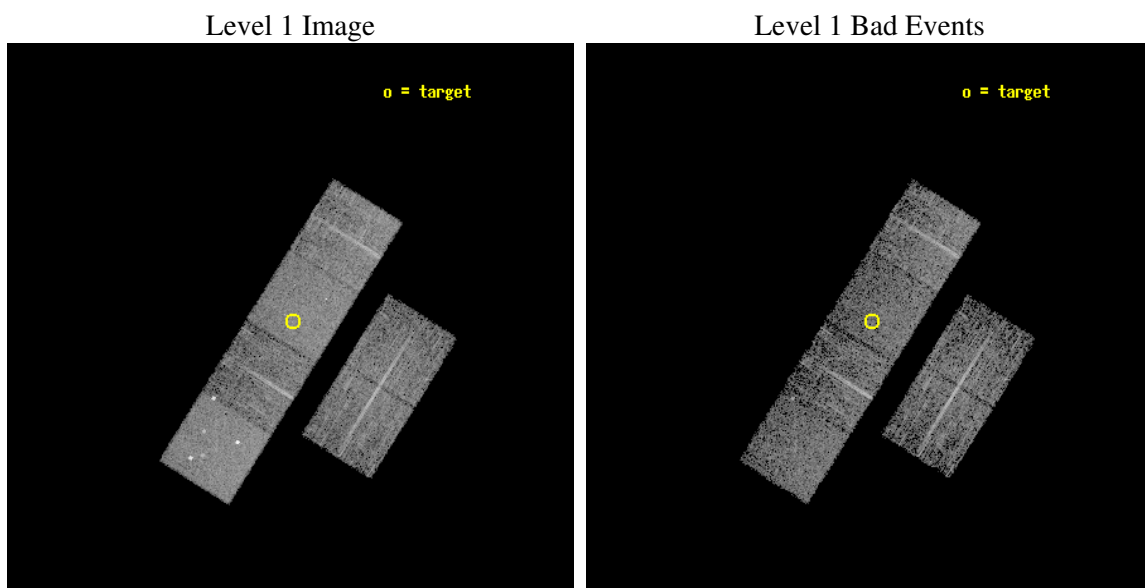
seq_num	700456
obs_id	3017
title	A SYSTEMATIC X-RAY SURVEY OF SUBMILLIMETRE-LUMINOUS QUASARS
observer	Dr Robert Priddey
object	LBQS0018-0220
dtcycle	0
cycle	P
ra_targ	5.364042
dec_targ	-2.059111
ra_nom	5.3675387153775
dec_nom	-2.0680546271147
roll_nom	301.98460822867
revision	2
ontime	4895.999981761
livetime	4834.0038819747
ontime2	4895.999981761
ontime3	4895.999981761
ontime5	4895.999981761
ontime6	4895.999981761
ontime7	4895.999981761
ontime8	4892.7590214908
l2events	44554



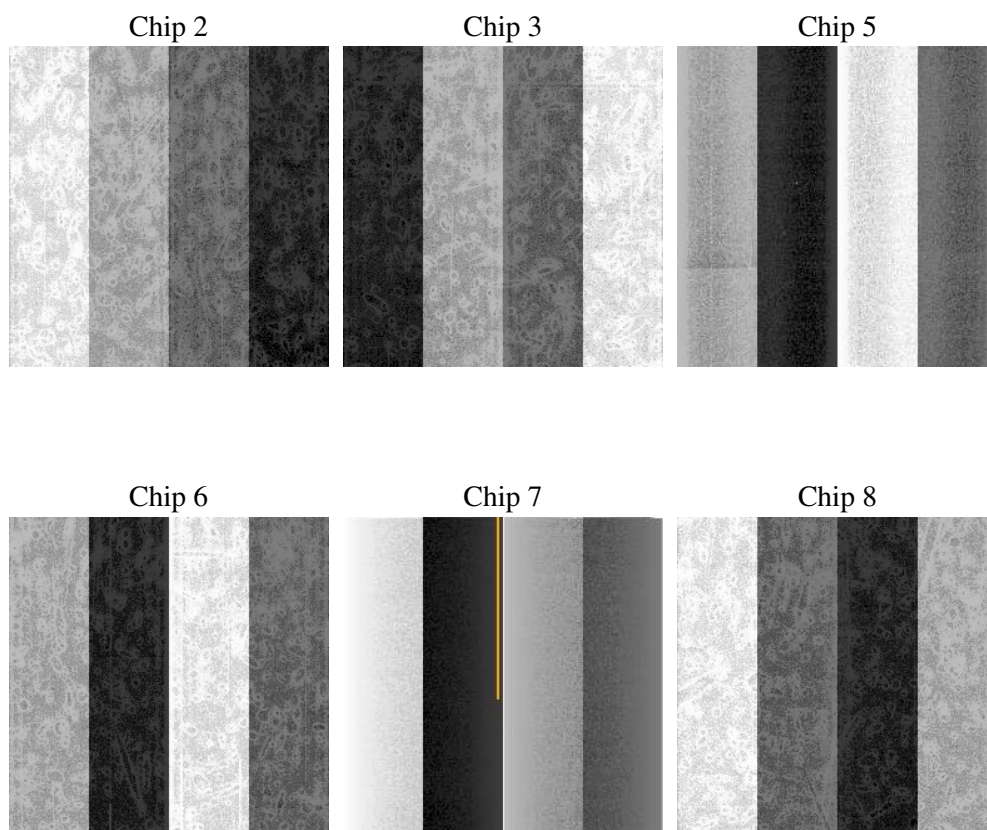
2 OBI

2.1 OBI

2.1.1 Images



2.1.2 Bias



2.1.3 Parameters

obi_num	0
ascdsver	7.6.9
caldbver	3.2.3
date	2006-10-07T11:25:00
revision	2

sched_exp_time	5140.000000
ontime	4900.3941932917
ontime2	4900.3941932917
ontime3	4900.3941733539
ontime5	4900.3941932917
ontime6	4900.3941932917
ontime7	4900.3941932917
ontime8	4897.1531134248
l1events	213545

2.1.4 Events

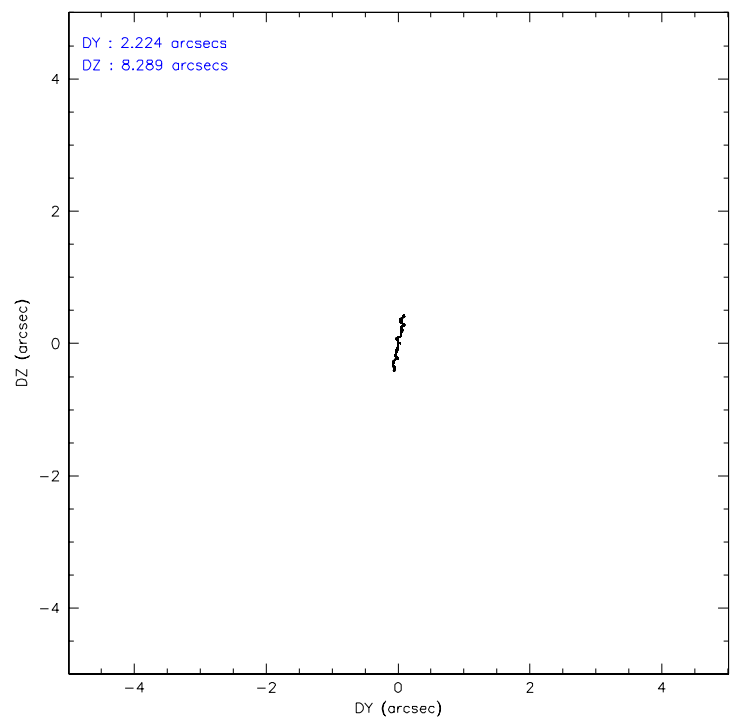
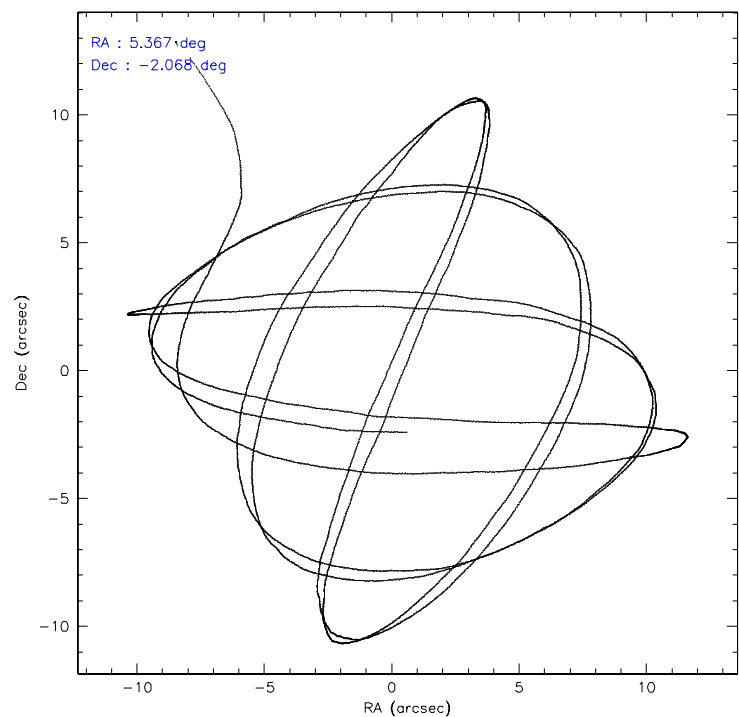
	ccd 2	ccd 3	ccd 5	ccd 6	ccd 7	ccd 8
level 1 events	30368	29385	45687	29227	39041	39837
rejected events	26953	26016	24589	25800	23964	32499
rejected %	88%	88%	53%	88%	61%	81%

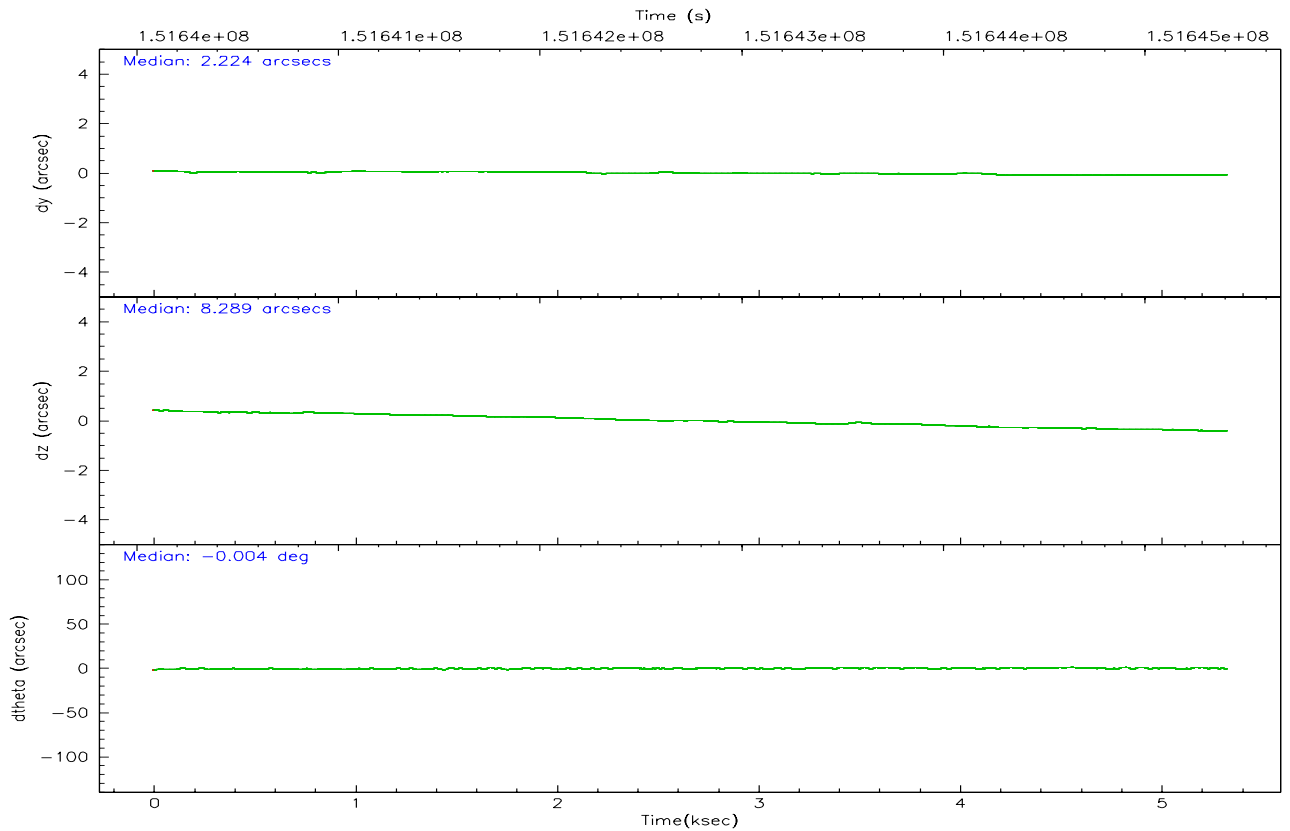
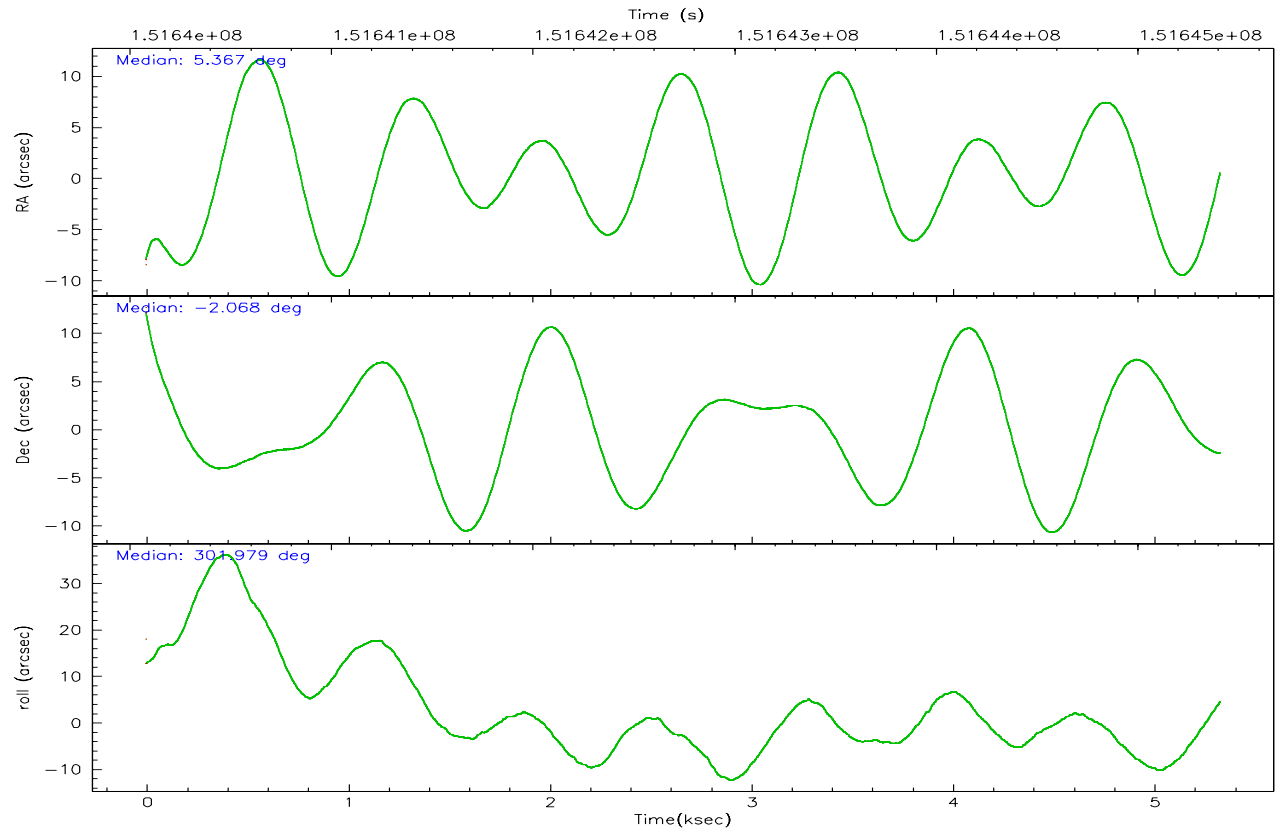
	ccd 2	ccd 3	ccd 5	ccd 6	ccd 7	ccd 8
grade 0 events	1484	1435	3136	1376	972	2255
	4%	4%	6%	4%	2%	5%
grade 1 events	21	16	78	11	30	28
	0%	0%	0%	0%	0%	0%
grade 2 events	724	627	6061	704	3791	1694
	2%	2%	13%	2%	9%	4%
grade 3 events	334	360	522	350	772	740
	1%	1%	1%	1%	1%	1%
grade 4 events	319	332	504	318	742	722
	1%	1%	1%	1%	1%	1%
grade 5 events	1127	1215	2171	1344	2656	1682
	3%	4%	4%	4%	6%	4%
grade 6 events	558	619	10892	681	8807	1932
	1%	2%	23%	2%	22%	4%
grade 7 events	25801	24781	22323	24443	21271	30784
	84%	84%	48%	83%	54%	77%

2.2 Compared Parameters

Parameter	Planned	Actual	Parameter	Planned	Actual
Instrument	ACIS	ACIS	Obspar format version number	6	6
Detector	ACIS-235678	ACIS-235678	Obspar file type	PREDICTED	ACTUAL
Grating	NONE	NONE	Obspar update status	NONE	UPDATED
Data mode	FAINT	FAINT	Number of optional ACIS chips dropped	0	0
Observation mode	POINTING	POINTING	On-chip summing requested	N	N
Pointing RA	5.343419	5.367538715377521	Subarray requested	NONE	NONE
Pointing Dec	-2.055617	-2.068054627114651	Alternating exposures requested	N	N
Pointing Roll	301.827138	301.9846082286667	Primary exposure time	0.000000	3.2
SIM focus pos (mm)	-0.684267	-0.6828225247311905			
SIM defocus (mm)	0	0.001444936568705701			
SIM translation stage pos (mm)	-190.132523	-190.1425803651734			
SIM translation stage offset (mm)	0	0.01005778216563158			
Observation start time	151640264.184000	151638978.58701			
Observation start date	2002-10-22T02:16:40	2002-10-22T01:56:18			
Observation end time	151645404.184000	151645912.7123			
Observation end date	2002-10-22T03:42:20	2002-10-22T03:51:52			
Read mode	TIMED	TIMED			

2.3 Aspect



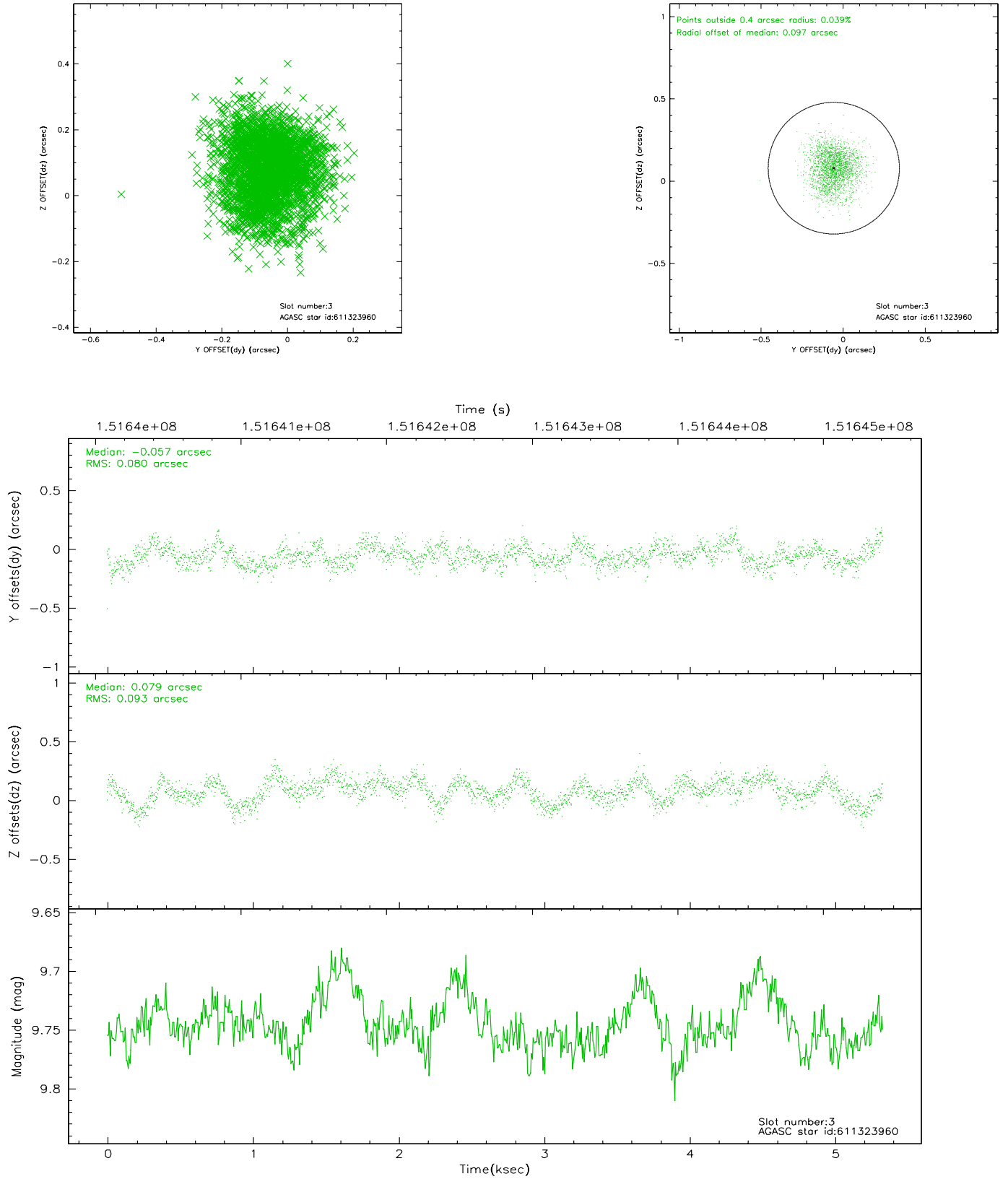


Slot Statistics

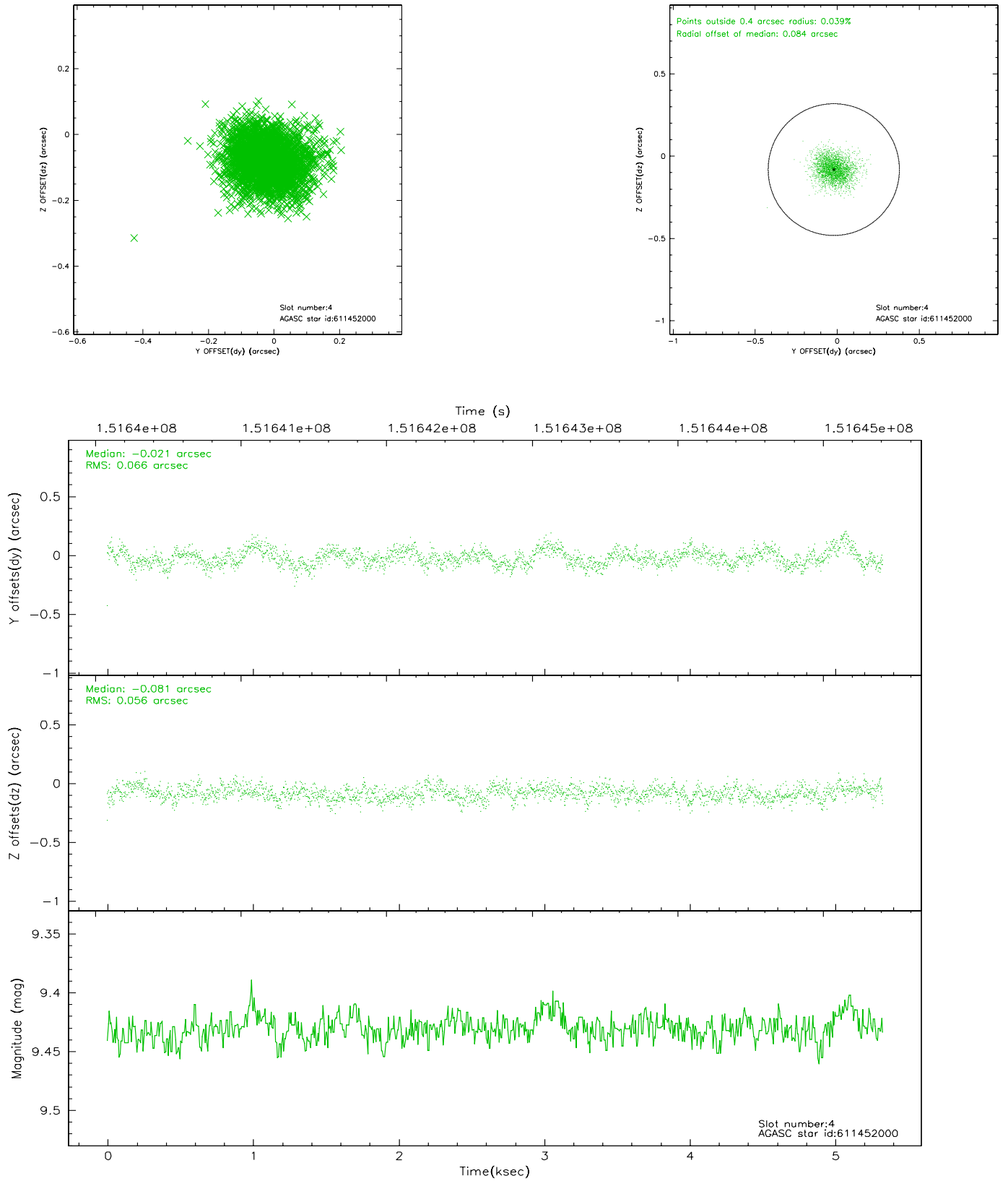
slot	status	id	mag	n_pts	med_dy	med_dz	dr1	dr2	ra	dec	mean_y	mean_z
0	FID	ACIS-S-2	7.11	1300	-0.013	0.009	0.007	0.012	0.000000	0.000000	-754.87	-1729.43
1	FID	ACIS-S-4	7.20	1298	-0.048	0.004	0.006	0.011	0.000000	0.000000	2157.87	177.86
2	FID	ACIS-S-5	7.24	1300	0.030	-0.004	0.006	0.010	0.000000	0.000000	-1806.20	172.83
3	GUIDE	611323960	9.75	2593	-0.057	0.079	0.131	0.209	4.970785	-1.645292	-1960.79	-360.35
4	GUIDE	611452000	9.43	2597	-0.021	-0.081	0.091	0.152	5.000413	-2.170052	-299.96	-1265.90
5	GUIDE	611452320	7.38	2600	-0.082	-0.052	0.049	0.081	5.287061	-2.356927	815.91	-744.60
6	GUIDE	611845944	9.47	2597	0.102	-0.069	0.091	0.144	5.335270	-2.728601	2044.89	-1302.59
7	GUIDE	611851872	9.44	2599	0.054	0.125	0.090	0.146	5.618608	-2.590225	2159.39	-174.19

2.4 Star Slots

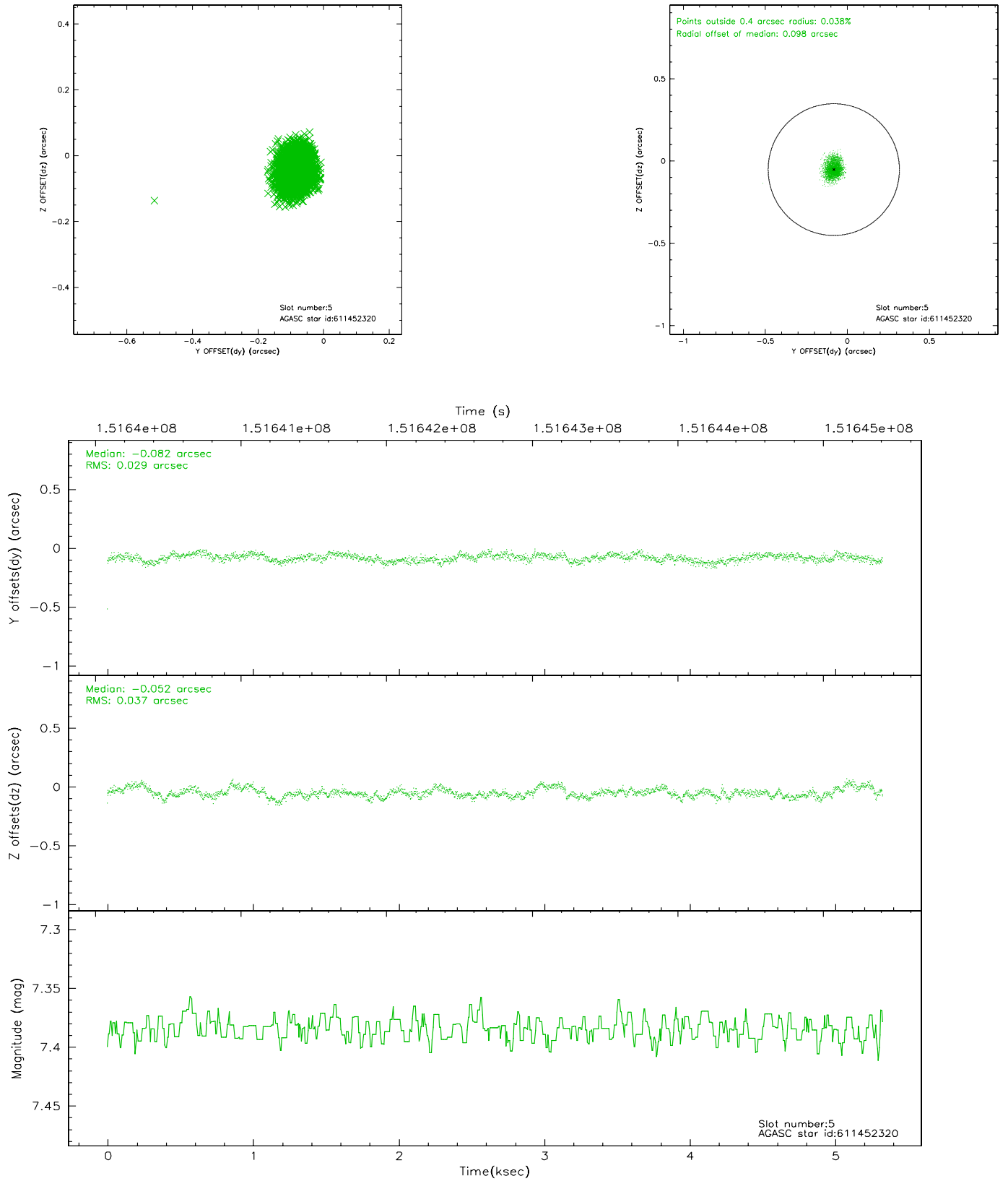
2.4.1 Slot 3



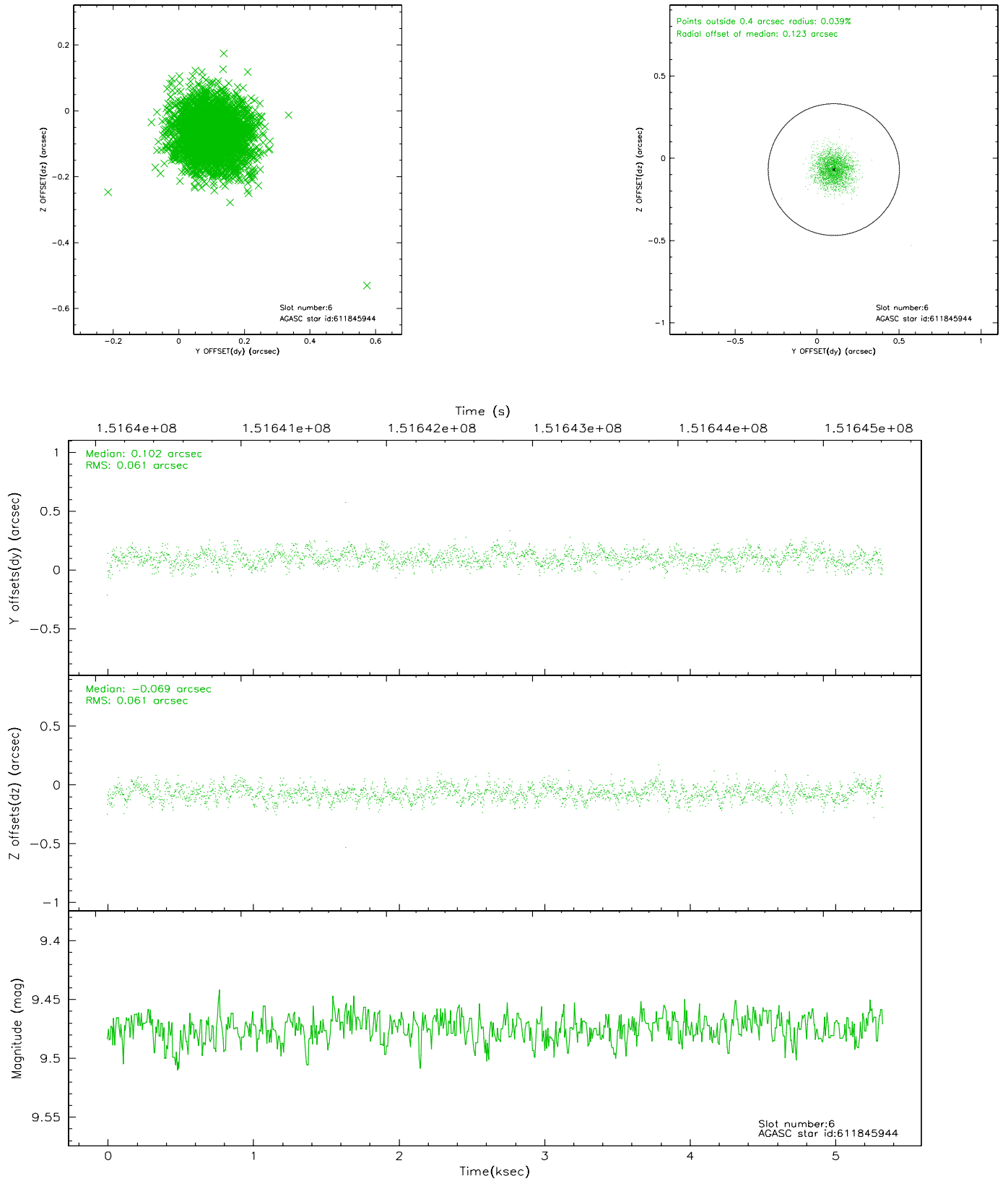
2.4.2 Slot 4



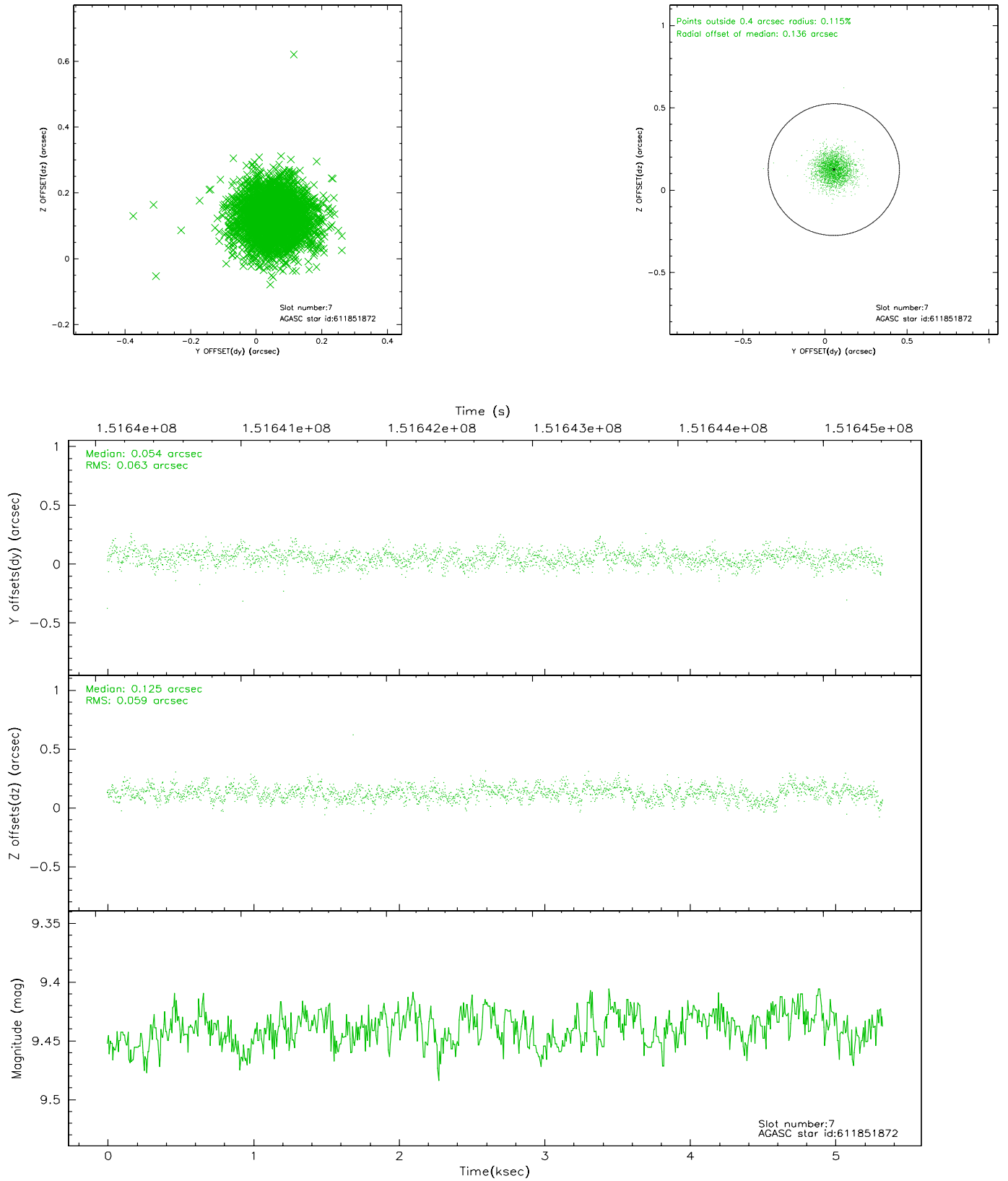
2.4.3 Slot 5



2.4.4 Slot 6

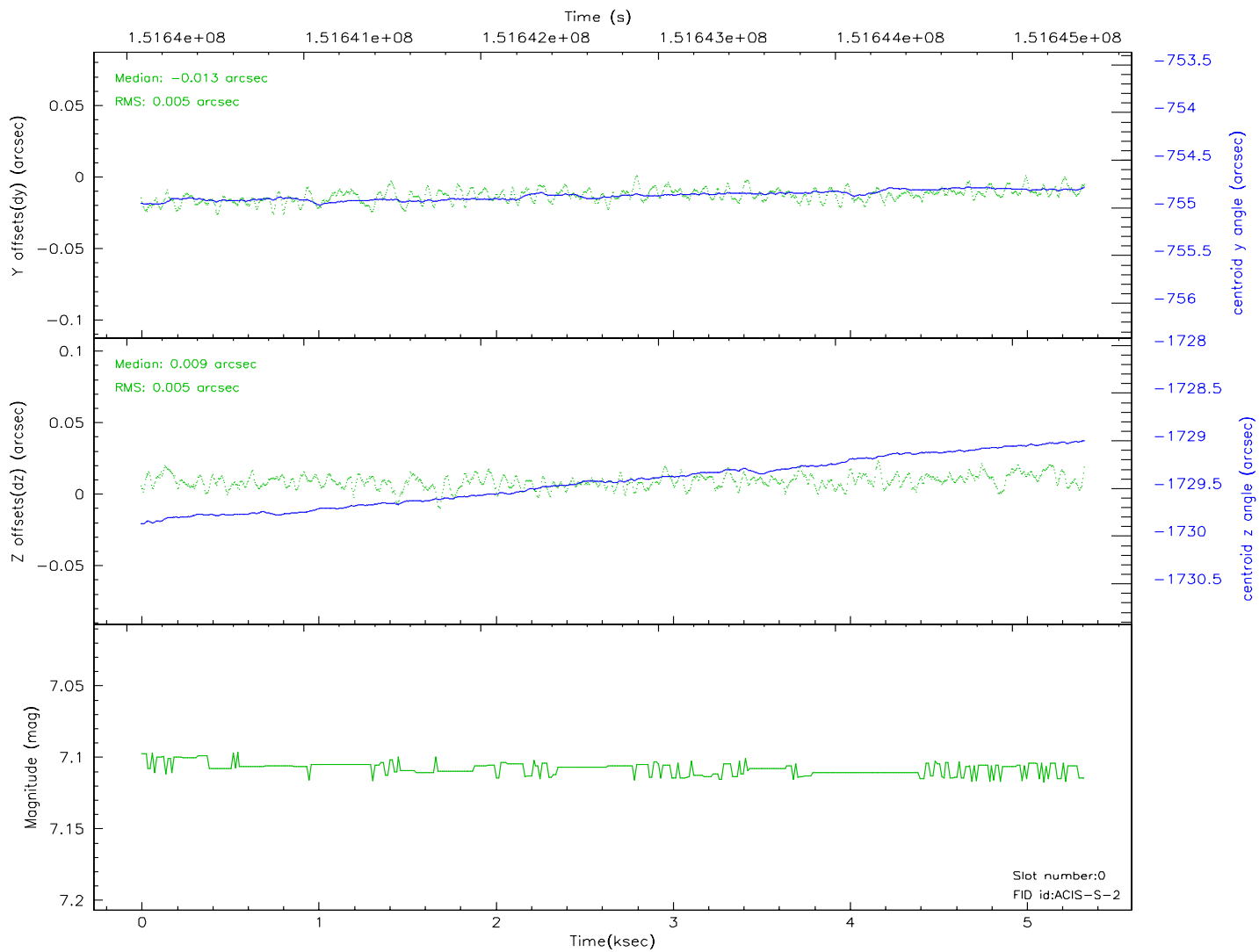
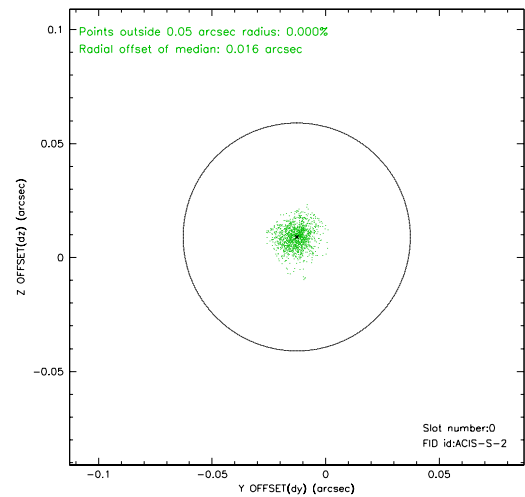
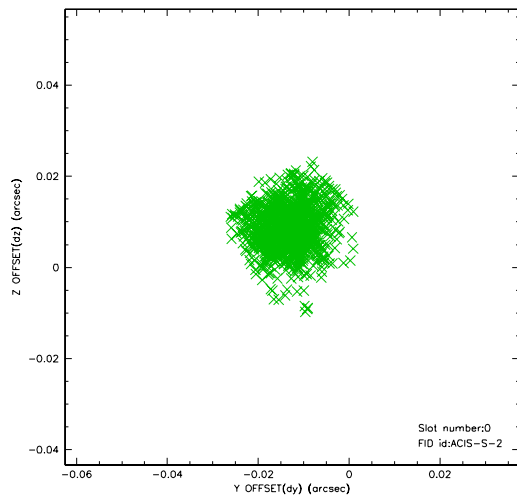


2.4.5 Slot 7

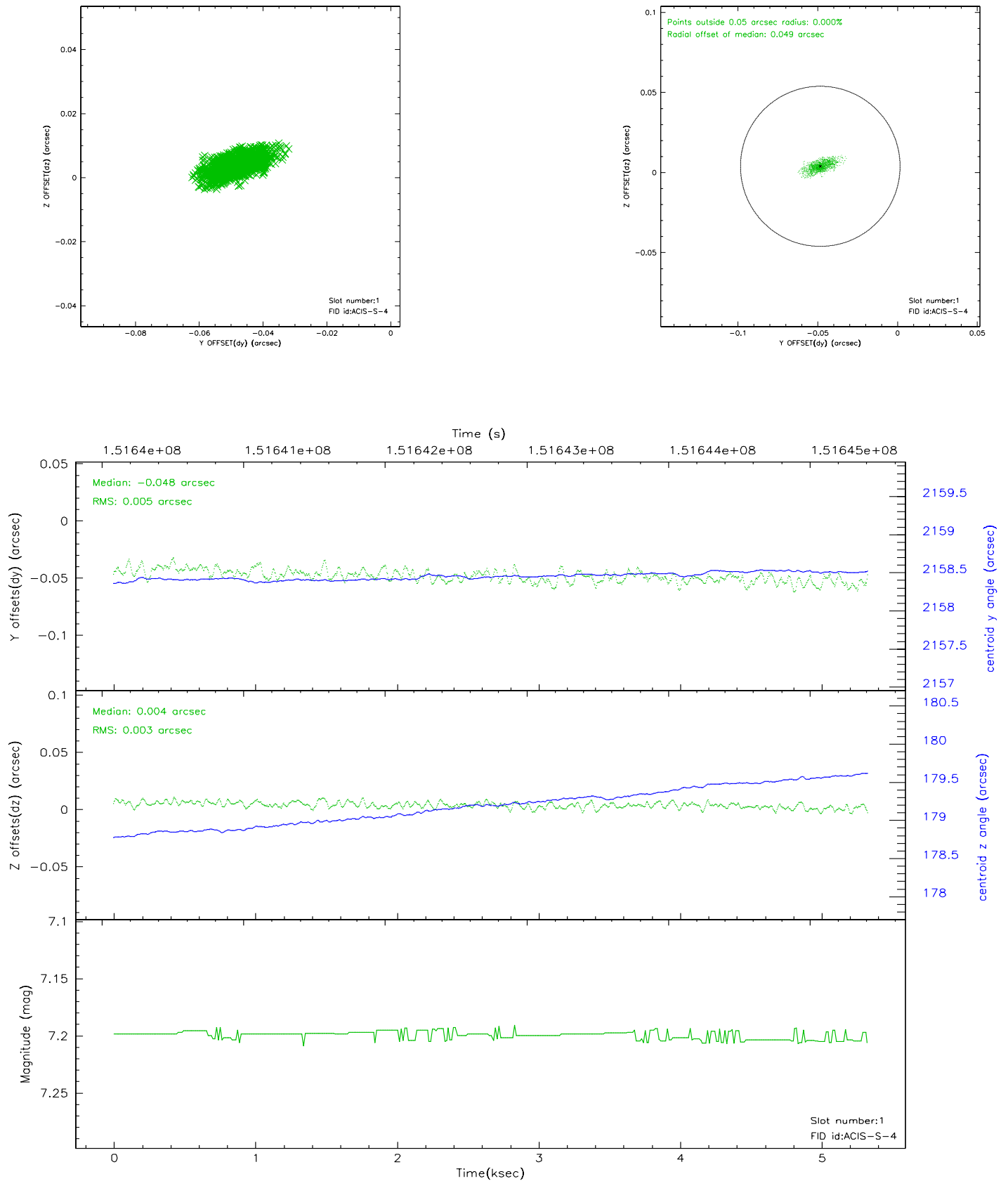


2.5 FID Slots

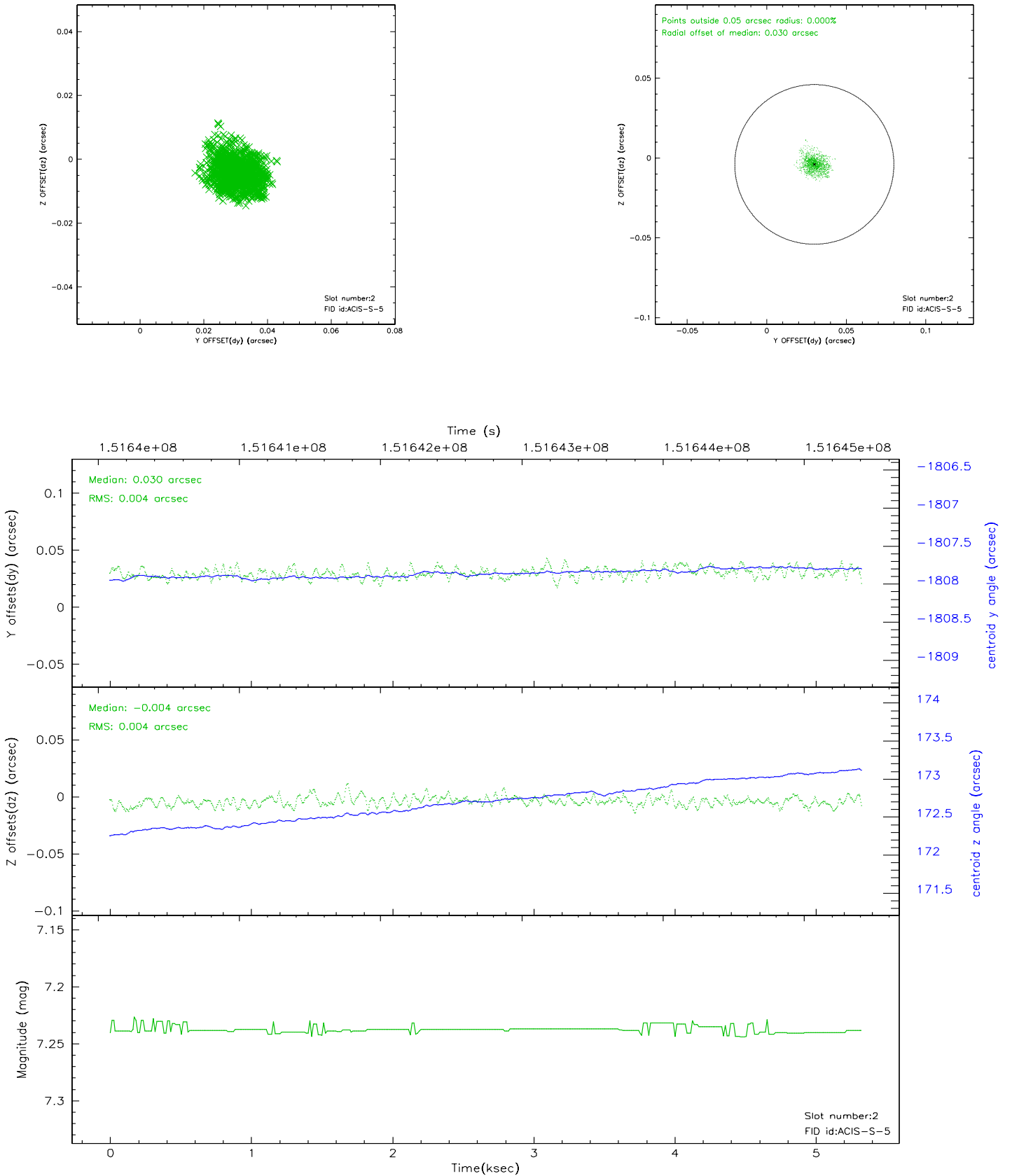
2.5.1 Slot 0



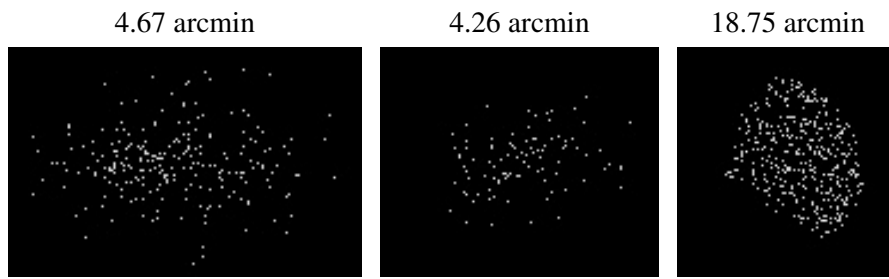
2.5.2 Slot 1



2.5.3 Slot 2



3 Point Sources



A Summary

A.1 Status

V&V Scientist	Jen Lauer
V&V Date (YYYY-MM-DD)	2006.10.08
V&V Edition	1
V&V Disposition and Status	OK
V&V Charge Time	4.895

A.2 Comments