

V&V Reference Report

L2 ASCDS Version : 7.6.10

Observation 2957 - L2 Version 001
Chandra X-Ray Center

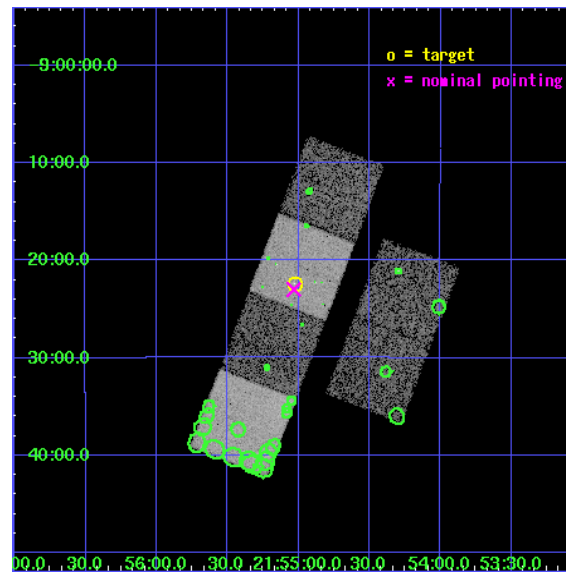
L2 Processing Date : Jan 21 2007

Contents

1	Front	2
2	OBI	3
2.1	OBI	3
2.1.1	Images	3
2.1.2	Bias	3
2.1.3	Parameters	4
2.1.4	Events	4
2.2	Compared Parameters	5
2.3	Aspect	6
2.4	Star Slots	9
2.4.1	Slot 3	9
2.4.2	Slot 4	10
2.4.3	Slot 5	11
2.4.4	Slot 6	12
2.4.5	Slot 7	13
2.5	FID Slots	14
2.5.1	Slot 0	14
2.5.2	Slot 1	15
2.5.3	Slot 2	16
3	Point Sources	17
A	Summary	18
A.1	Status	18
A.2	Comments	18

1 Front

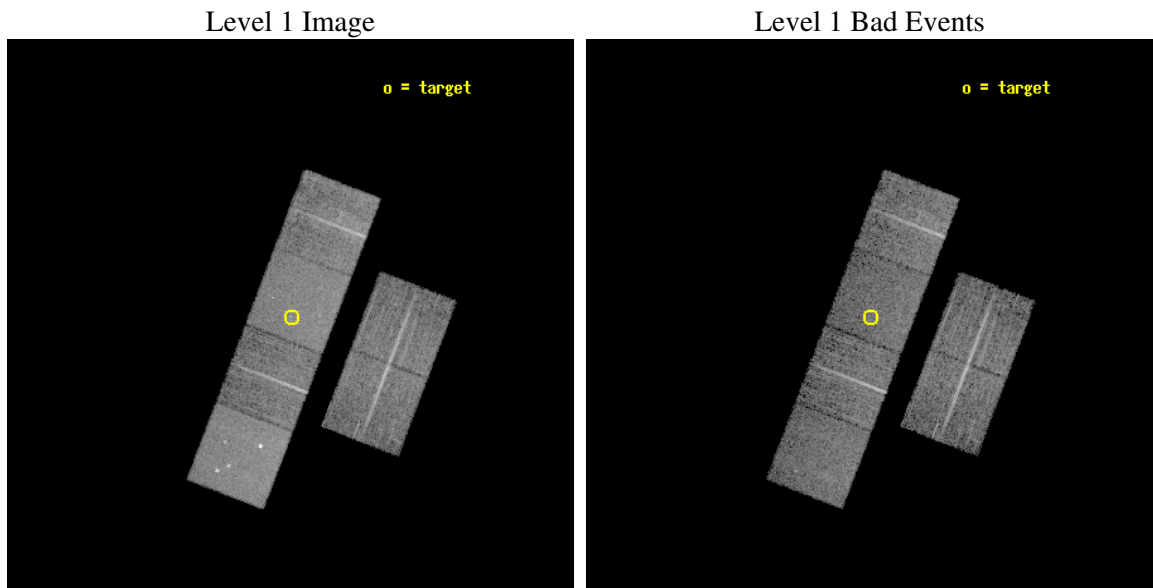
seq_num	700396
obs_id	2957
title	EXPLORATORY OBSERVATIONS OF A NEW BRIGHT QUASAR
observer	PROF. KAREN LEIGHLY
object	PHL 1811
dtcycle	0
cycle	P
ra_targ	328.75625
dec_targ	-9.373528
ra_nom	328.75810428221
dec_nom	-9.3831554310939
roll_nom	290.9823473494
revision	2
ontime	9497.5180584192
livetime	9377.2547660447
ontime2	9494.277078256
ontime3	9494.277078256
ontime5	9497.5180584192
ontime6	9494.277078256
ontime7	9497.5180584192
ontime8	9494.2770483494
l2events	96750



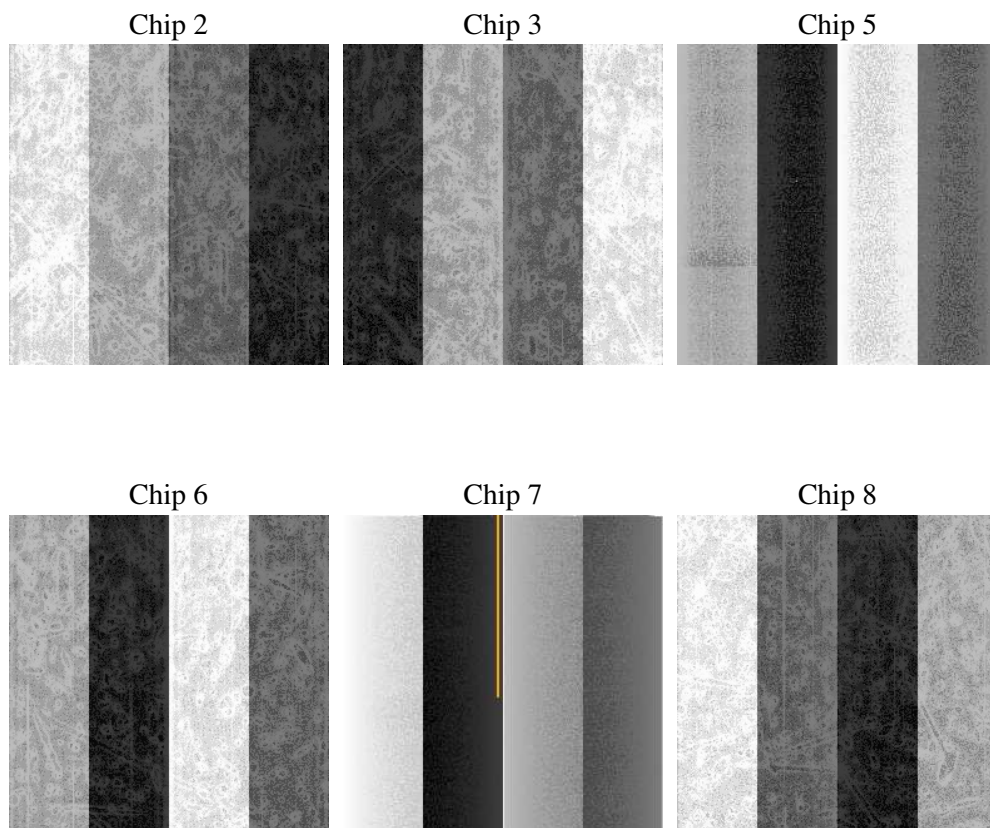
2 OBI

2.1 OBI

2.1.1 Images



2.1.2 Bias



2.1.3 Parameters

obi_num	1
ascdsver	7.6.10
caldbver	3.3.0
date	2007-01-20T13:01:41
revision	2

sched_exp_time	9353.000000
ontime	9497.5180584192
ontime2	9494.277078256
ontime3	9494.277078256
ontime5	9497.5180584192
ontime6	9494.277078256
ontime7	9497.5180584192
ontime8	9494.2770483494
l1events	518734

2.1.4 Events

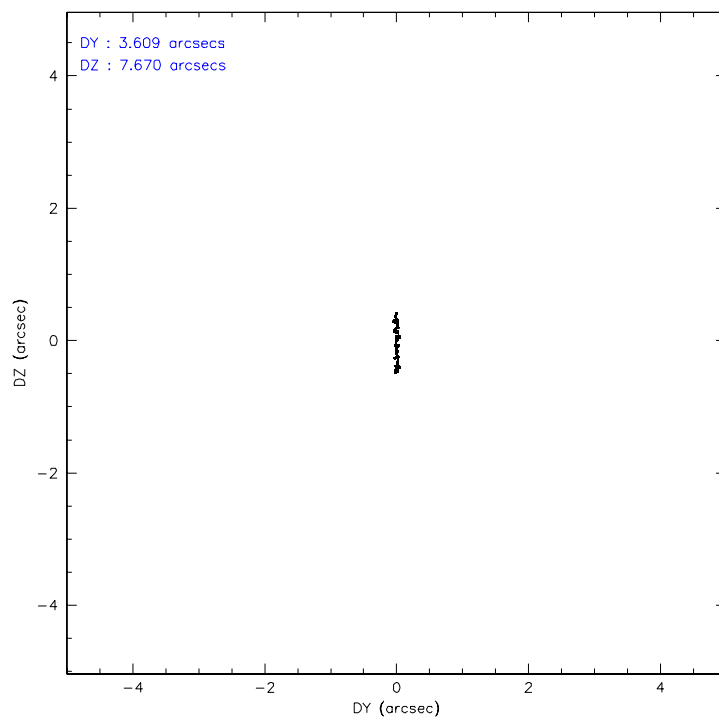
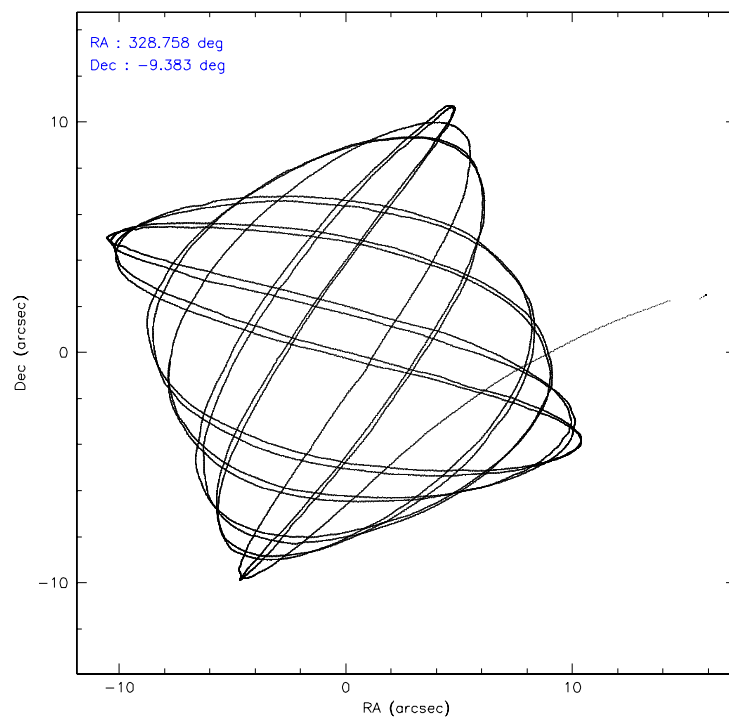
	ccd 2	ccd 3	ccd 5	ccd 6	ccd 7	ccd 8
level 1 events	74117	74371	109530	73985	96308	90423
rejected events	67076	67385	66332	66647	62840	74938
rejected %	90%	90%	60%	90%	65%	82%

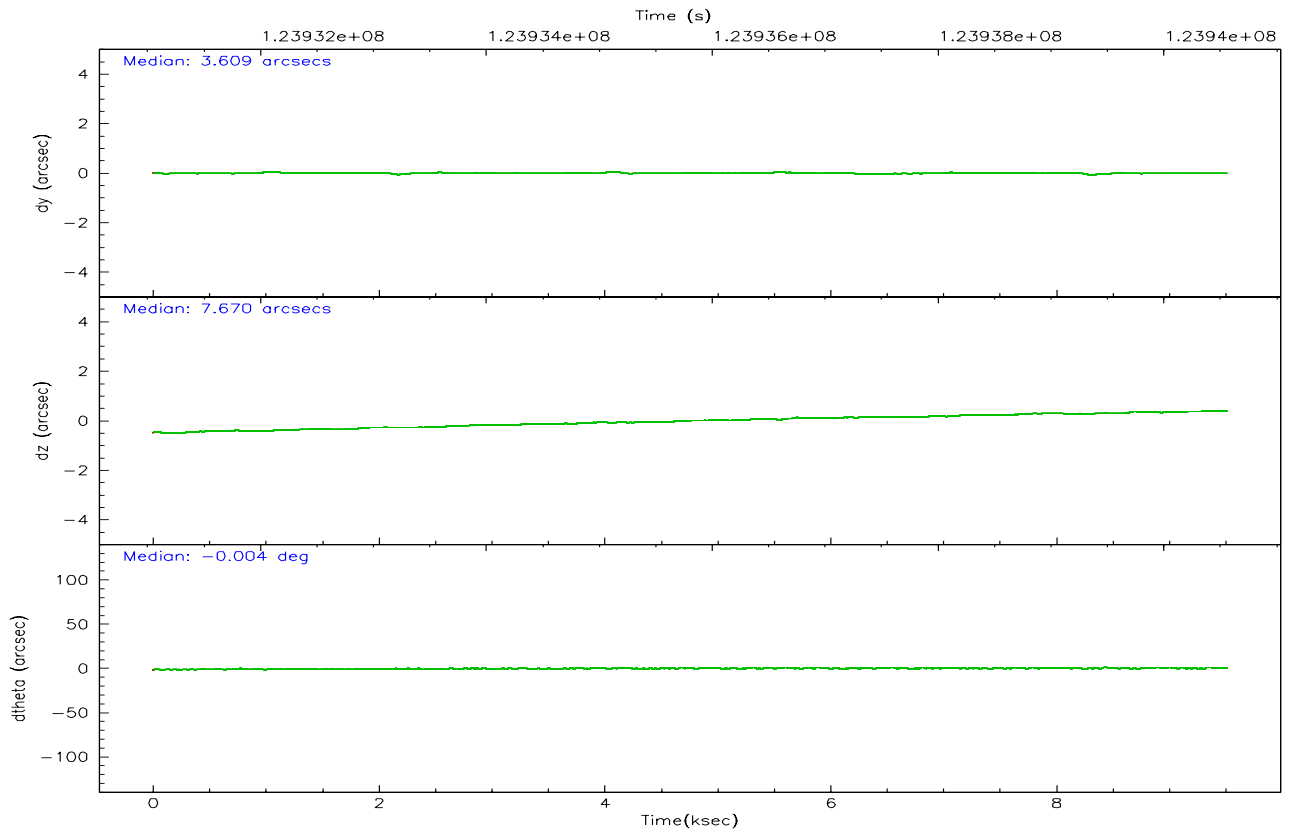
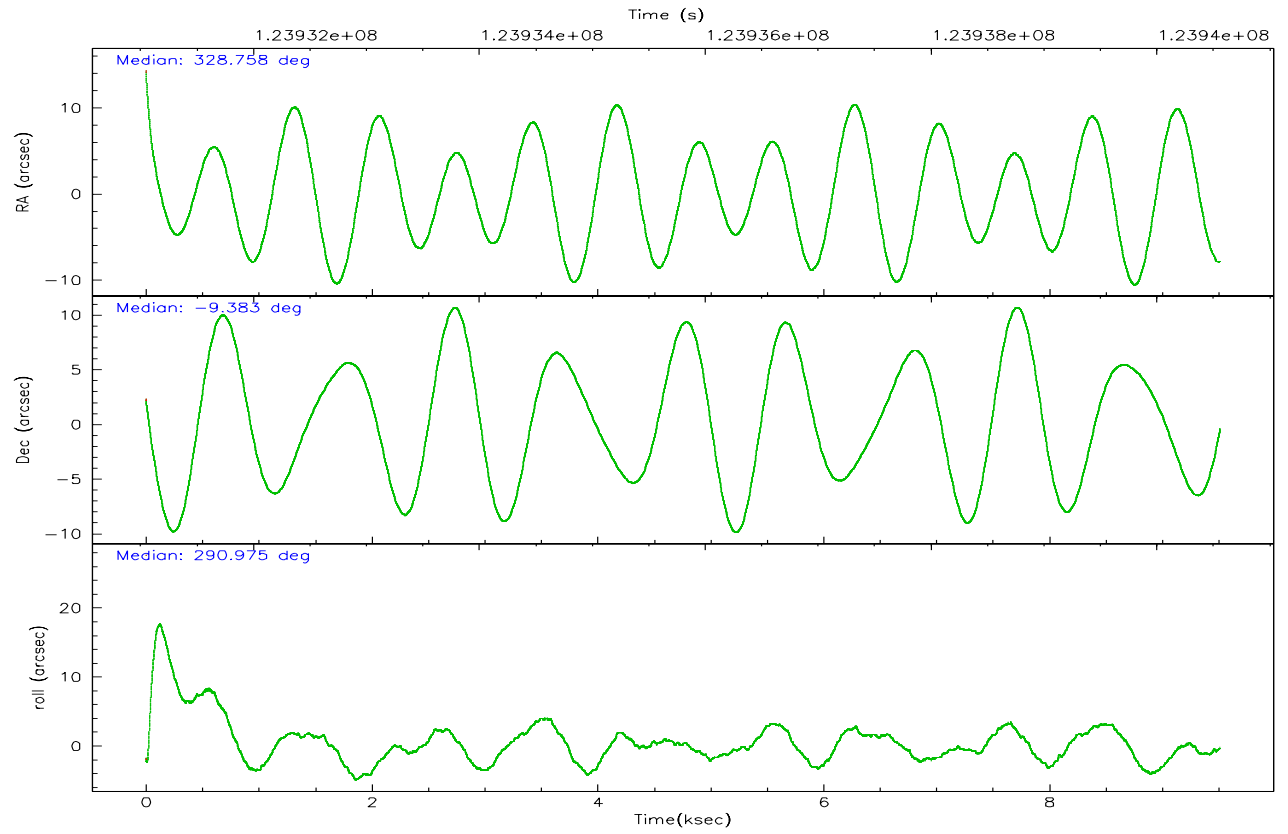
	ccd 2	ccd 3	ccd 5	ccd 6	ccd 7	ccd 8
grade 0 events	3630	3591	7978	3713	3917	6007
	4%	4%	7%	5%	4%	6%
grade 1 events	29	44	118	29	95	54
	0%	0%	0%	0%	0%	0%
grade 2 events	1820	1704	14963	1758	7990	4059
	2%	2%	13%	2%	8%	4%
grade 3 events	793	812	2065	837	3602	1900
	1%	1%	1%	1%	3%	2%
grade 4 events	749	815	2061	852	3595	1745
	1%	1%	1%	1%	3%	1%
grade 5 events	2578	2930	7906	3153	9317	4046
	3%	3%	7%	4%	9%	4%
grade 6 events	1550	1525	25084	1676	21138	4906
	2%	2%	22%	2%	21%	5%
grade 7 events	62968	62950	49355	61967	46654	67706
	84%	84%	45%	83%	48%	74%

2.2 Compared Parameters

Parameter	Planned	Actual	Parameter	Planned	Actual
Instrument	ACIS	ACIS	Obspar format version number	6	6
Detector	ACIS-235678	ACIS-235678	Obspar file type	PREDICTED	ACTUAL
Grating	NONE	NONE	Obspar update status	NONE	UPDATED
Data mode	FAINT	FAINT	Number of optional ACIS chips dropped	0	0
Observation mode	POINTING	POINTING	On-chip summing requested	N	N
Pointing RA	328.736428	328.758104282206	Subarray requested	NONE	NONE
Pointing Dec	-9.366169	-9.383155431093938	Alternating exposures requested	N	N
Pointing Roll	290.822220	290.9823473494	Primary exposure time	0.000000	3.2
SIM focus pos (mm)	-0.684267	-0.6828225247311905			
SIM defocus (mm)	0	0.001444936568705701			
SIM translation stage pos (mm)	-190.132523	-190.1400660498719			
SIM translation stage offset (mm)	0	0.00754346686406393			
Observation start time	123931206.184000	123929084.91962			
Observation start date	2001-12-05T09:19:02	2001-12-05T08:44:44			
Observation end time	123940559.184000	123941378.25761			
Observation end date	2001-12-05T11:54:55	2001-12-05T12:09:38			
Read mode	TIMED	TIMED			

2.3 Aspect



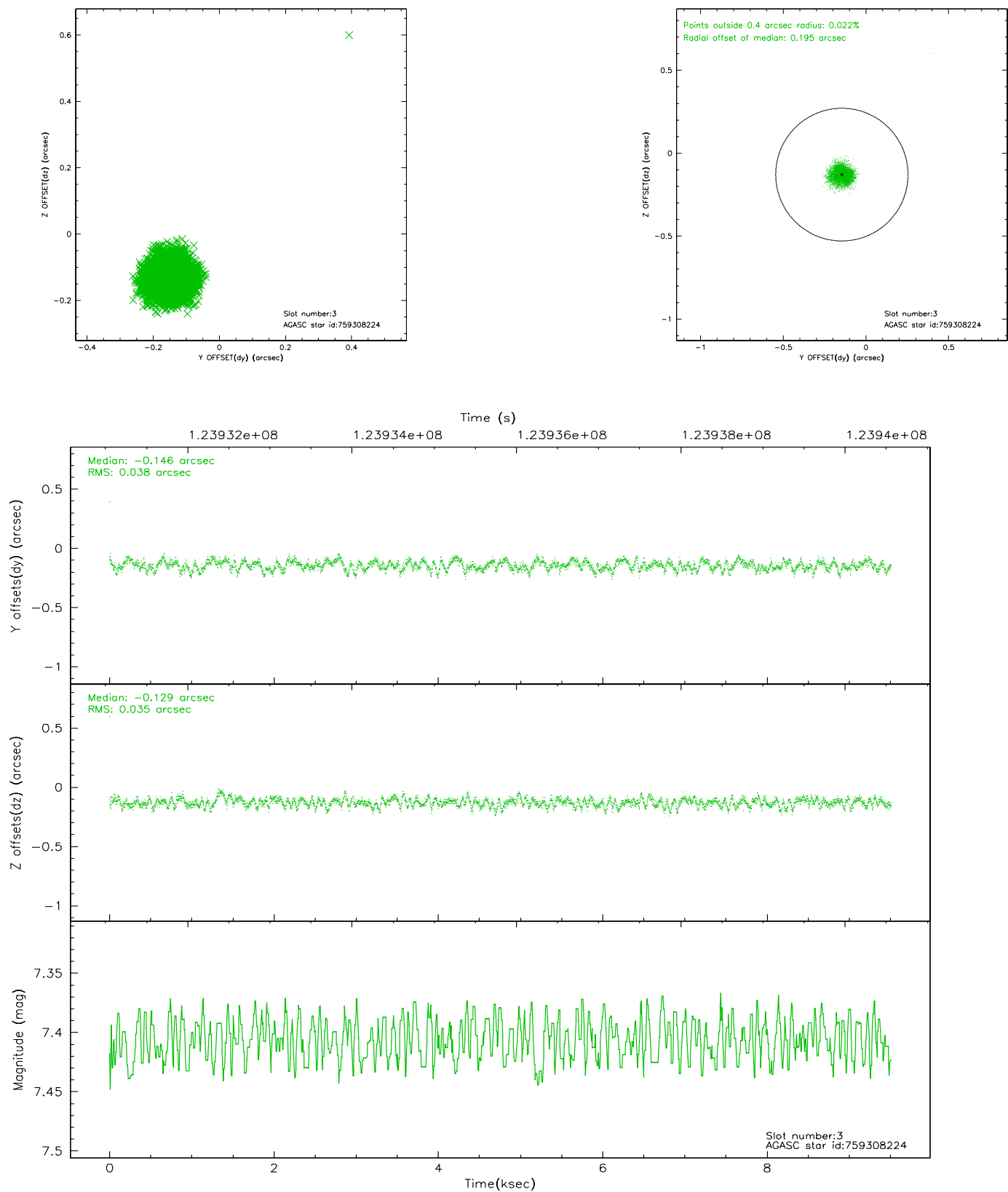


Slot Statistics

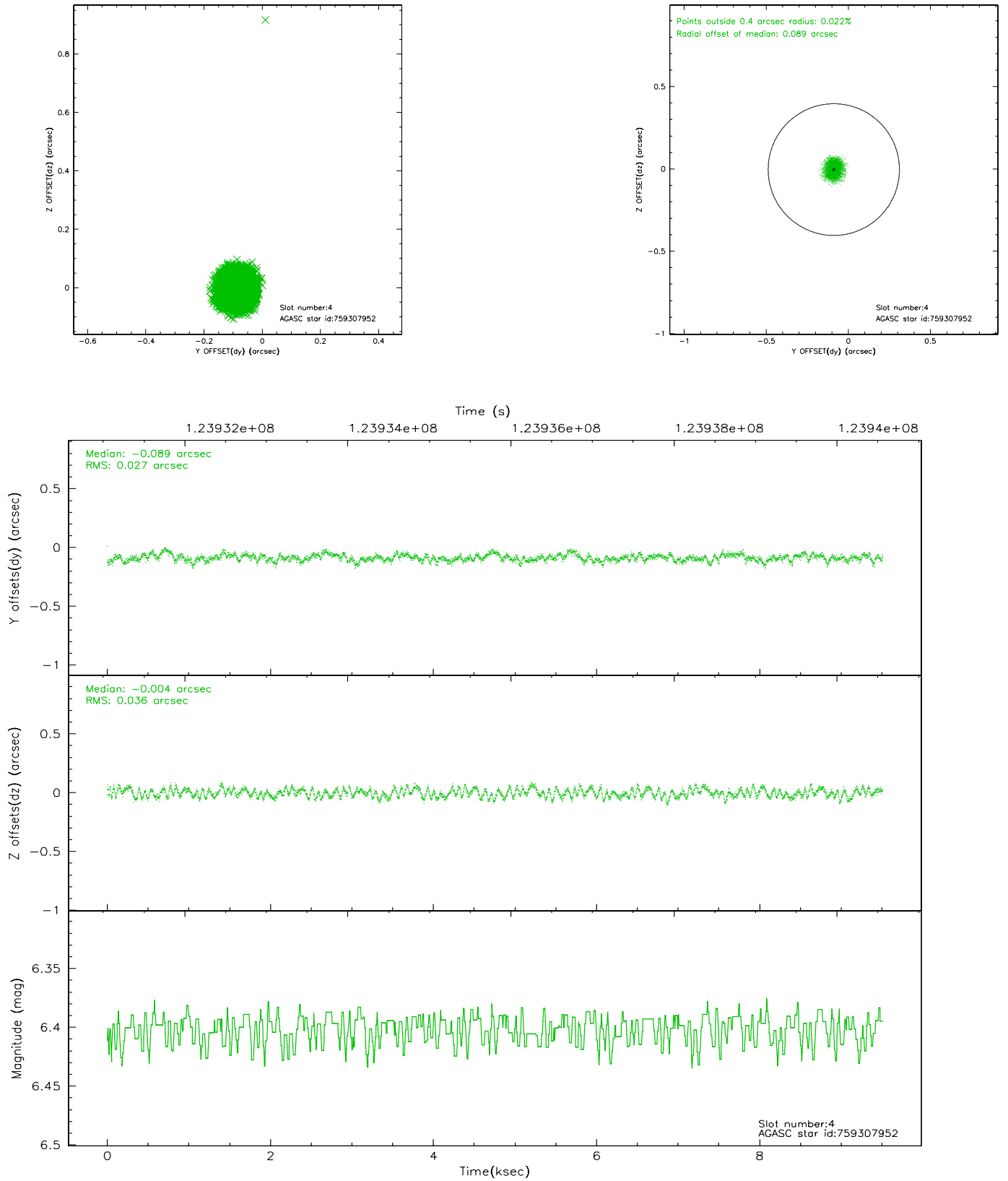
slot	status	id	mag	n_pts	med_dy	med_dz	dr1	dr2	ra	dec	mean_y	mean_z
0	FID	ACIS-S-2	7.11	2318	0.005	0.017	0.007	0.012	0.000000	0.000000	-756.27	-1728.81
1	FID	ACIS-S-4	7.20	2318	-0.051	-0.007	0.005	0.009	0.000000	0.000000	2156.70	179.05
2	FID	ACIS-S-5	7.24	2318	0.014	-0.001	0.007	0.012	0.000000	0.000000	-1808.36	173.39
3	GUIDE	759308224	7.41	4637	-0.146	-0.129	0.054	0.085	328.123687	-9.417926	-597.50	-2101.14
4	GUIDE	759307952	6.40	4637	-0.089	-0.004	0.048	0.073	329.103732	-9.585858	1202.99	937.00
5	GUIDE	759308864	9.12	4572	0.119	0.170	0.072	0.118	329.073084	-9.505733	895.35	939.03
6	GUIDE	759305424	9.73	4636	-0.030	-0.077	0.120	0.196	328.253023	-9.924329	1270.40	-2316.71
7	GUIDE	759305384	8.85	4630	0.143	0.043	0.071	0.115	328.426697	-9.776111	989.83	-1552.21

2.4 Star Slots

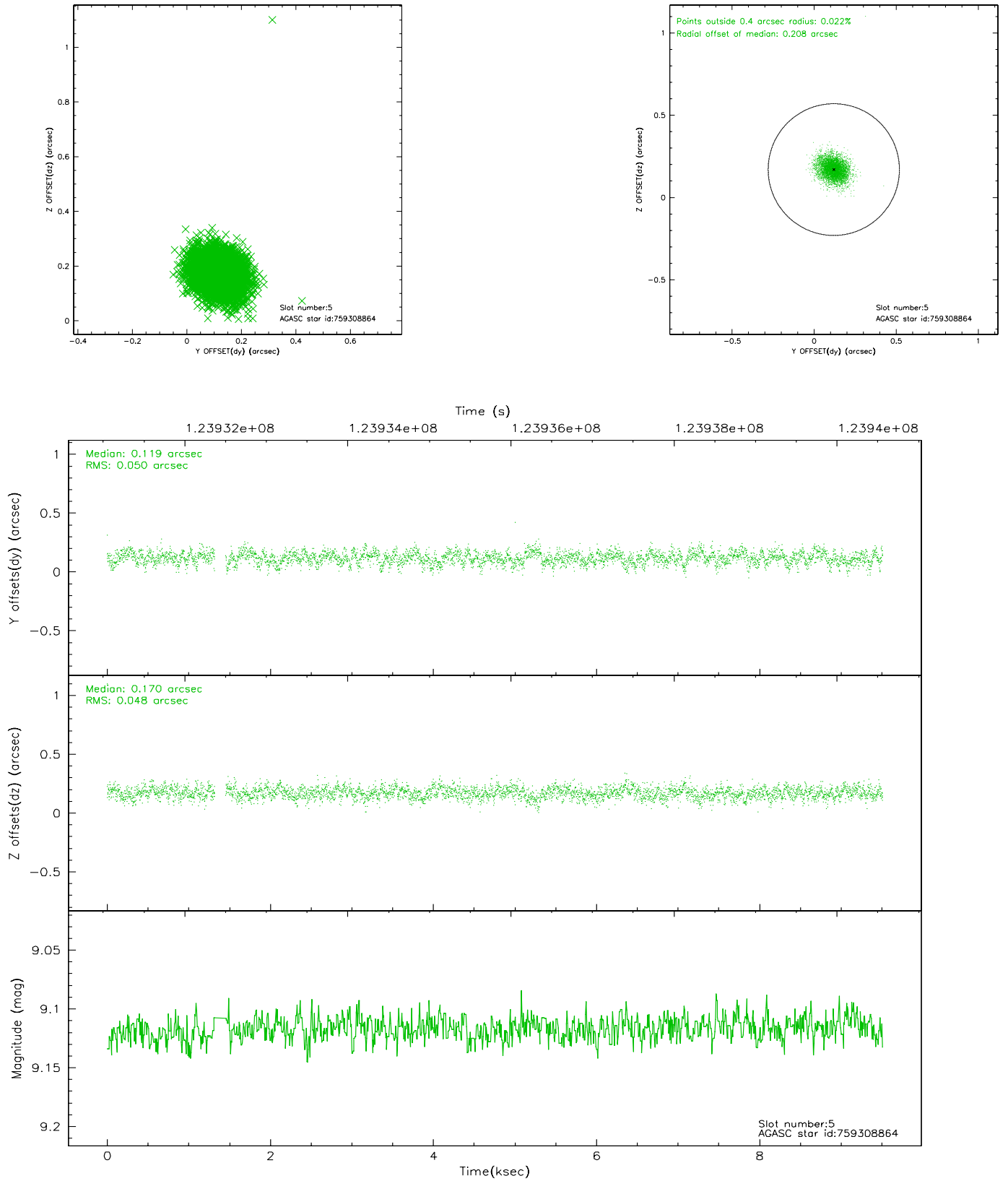
2.4.1 Slot 3



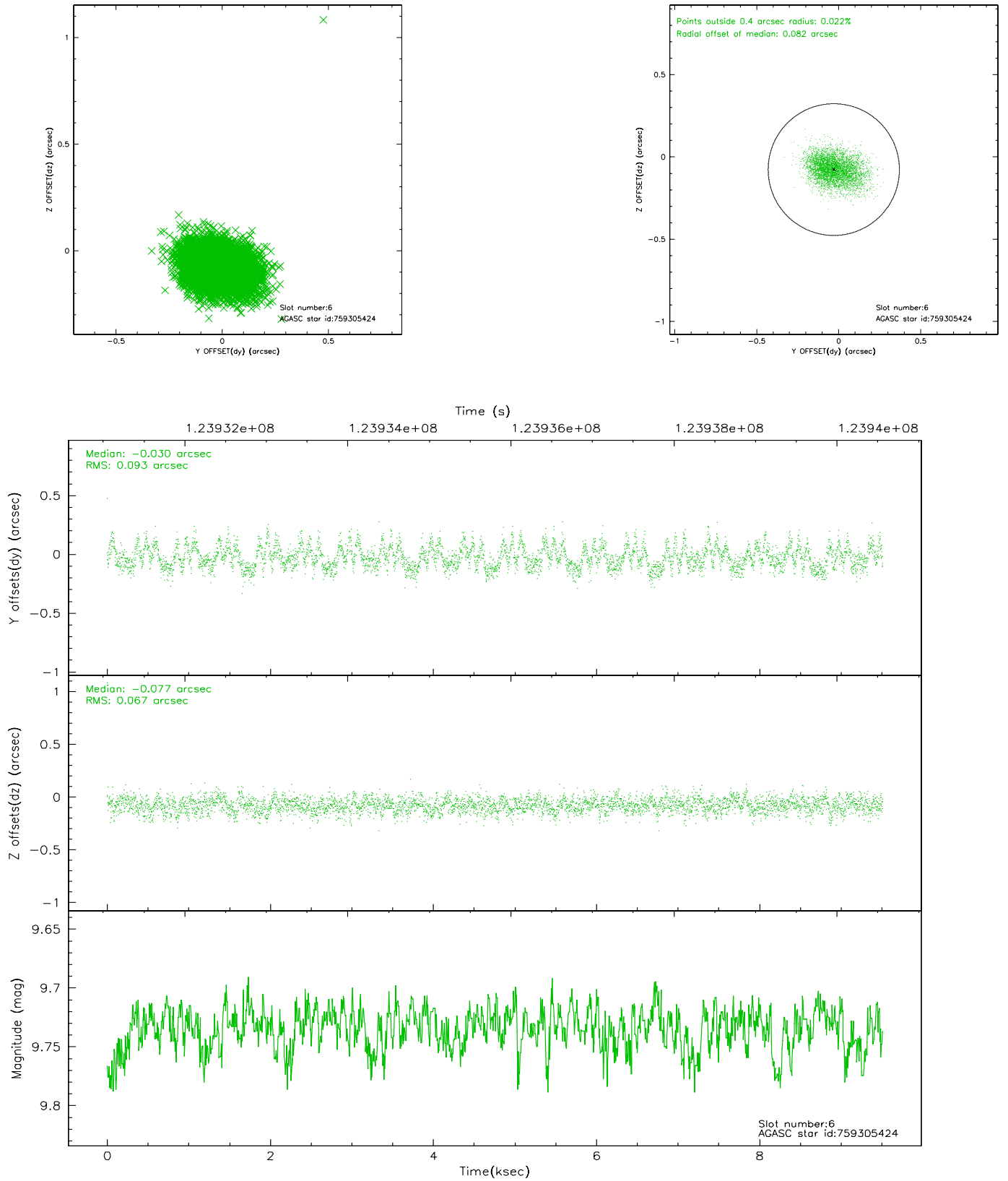
2.4.2 Slot 4



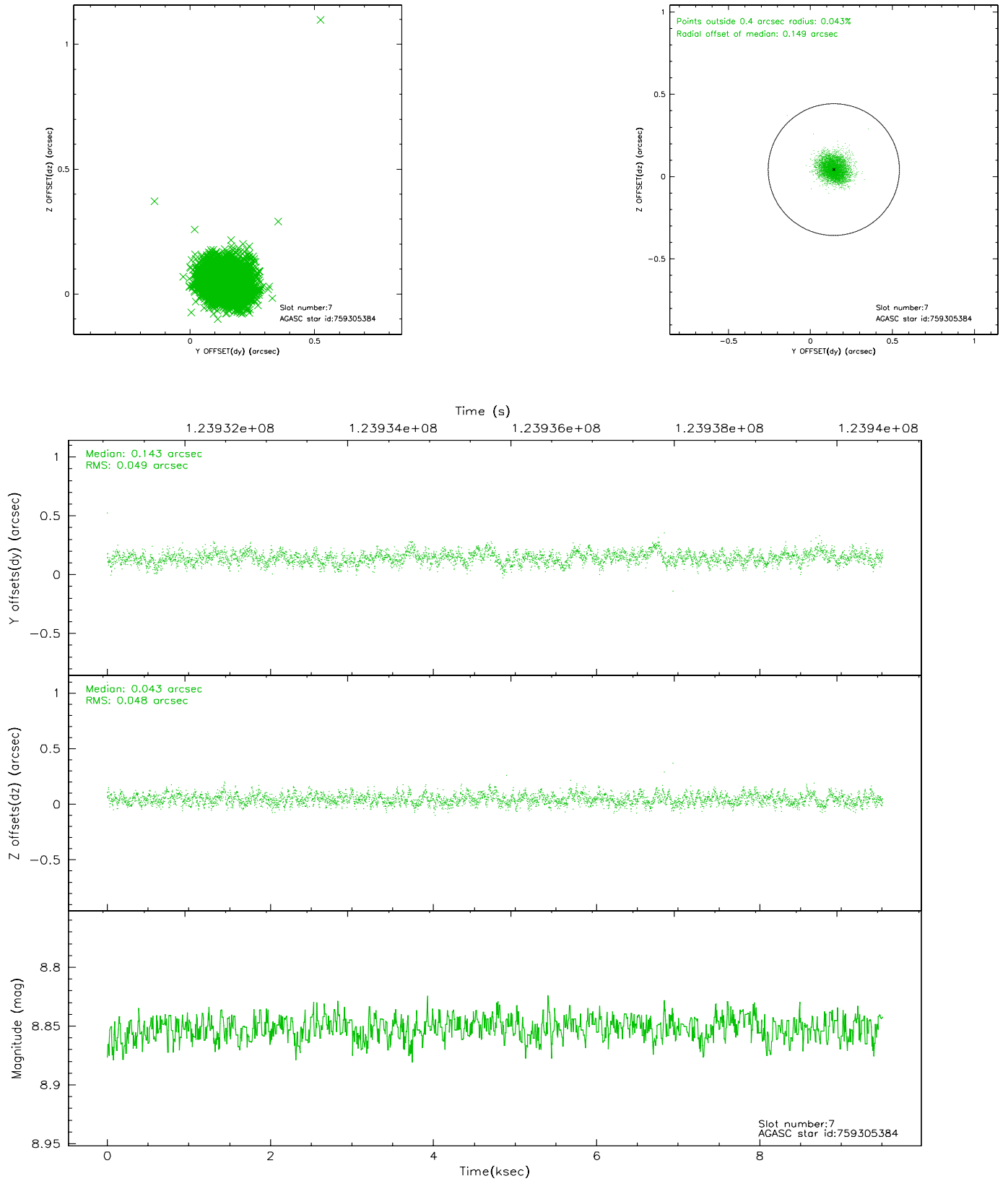
2.4.3 Slot 5



2.4.4 Slot 6

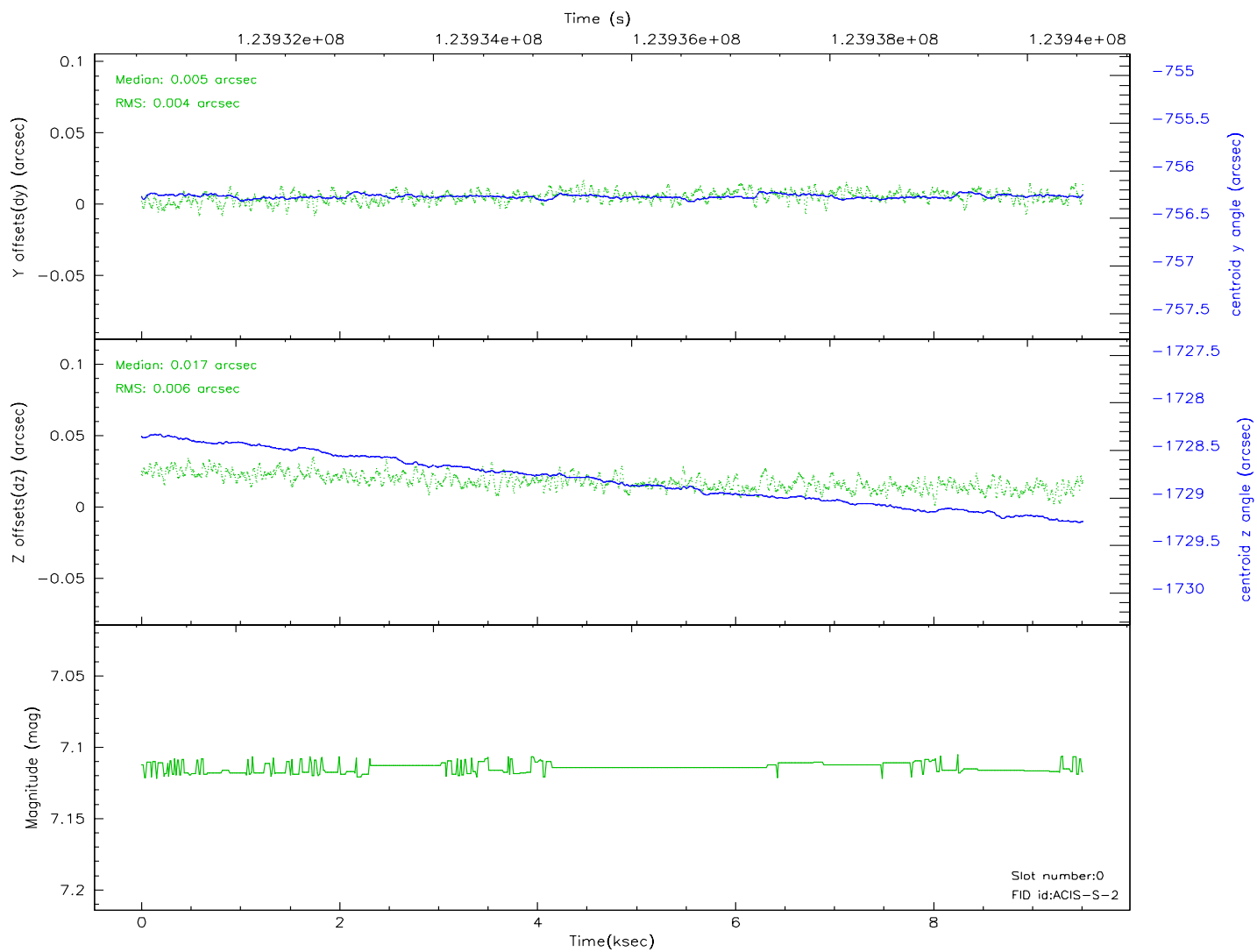
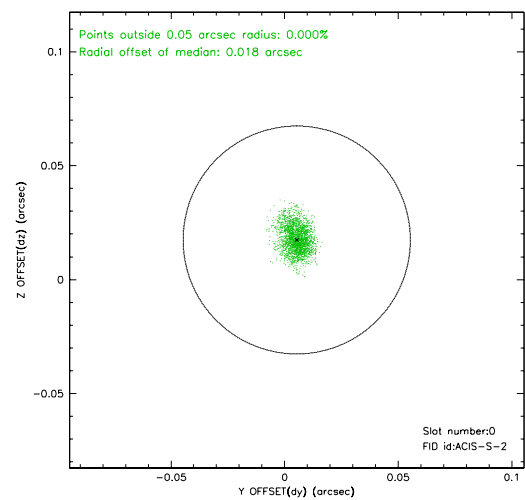
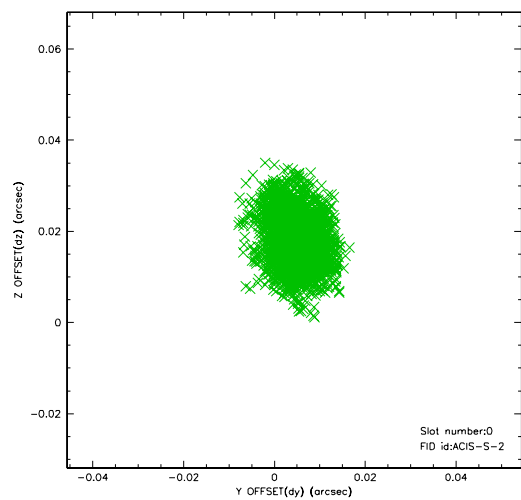


2.4.5 Slot 7

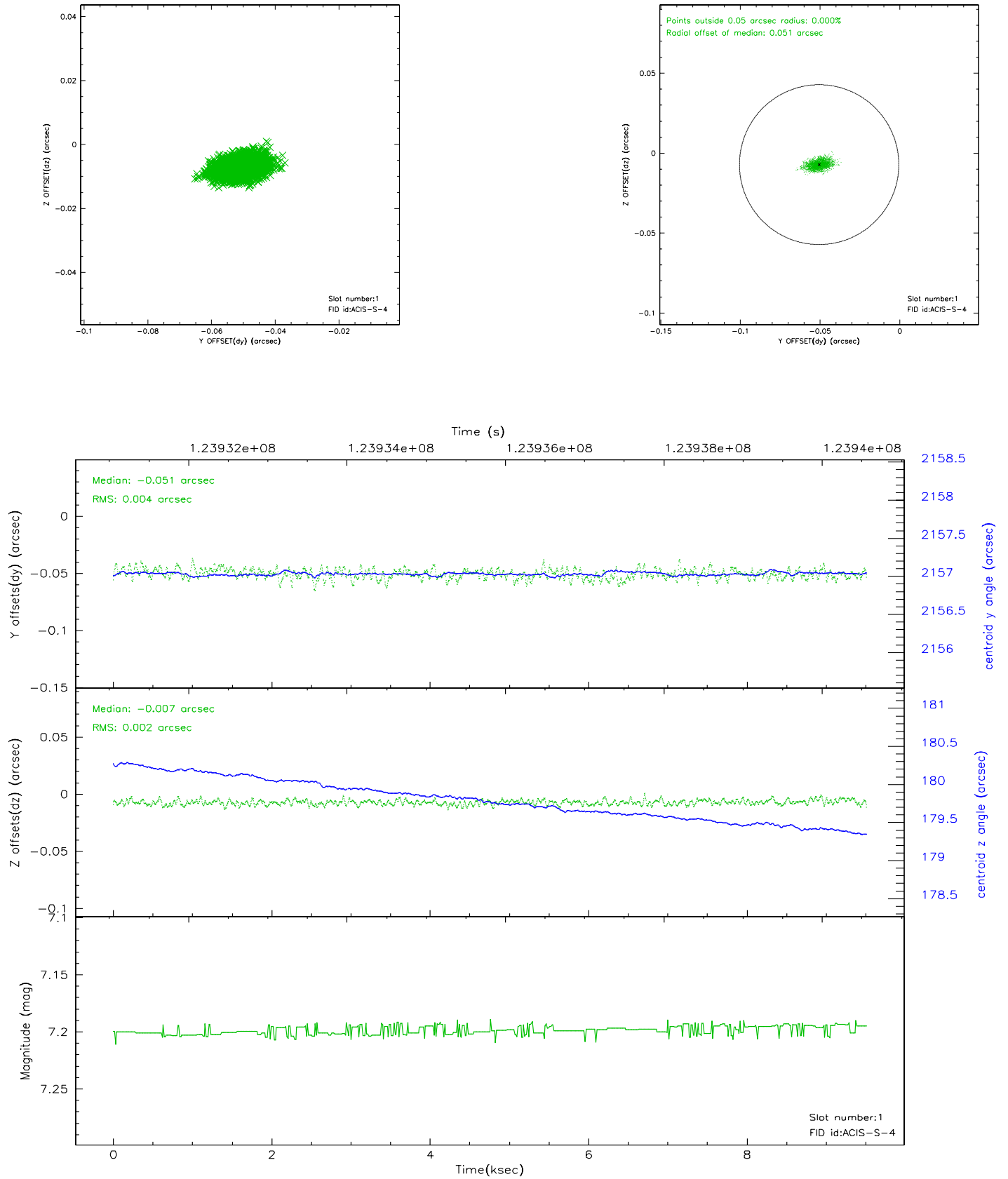


2.5 FID Slots

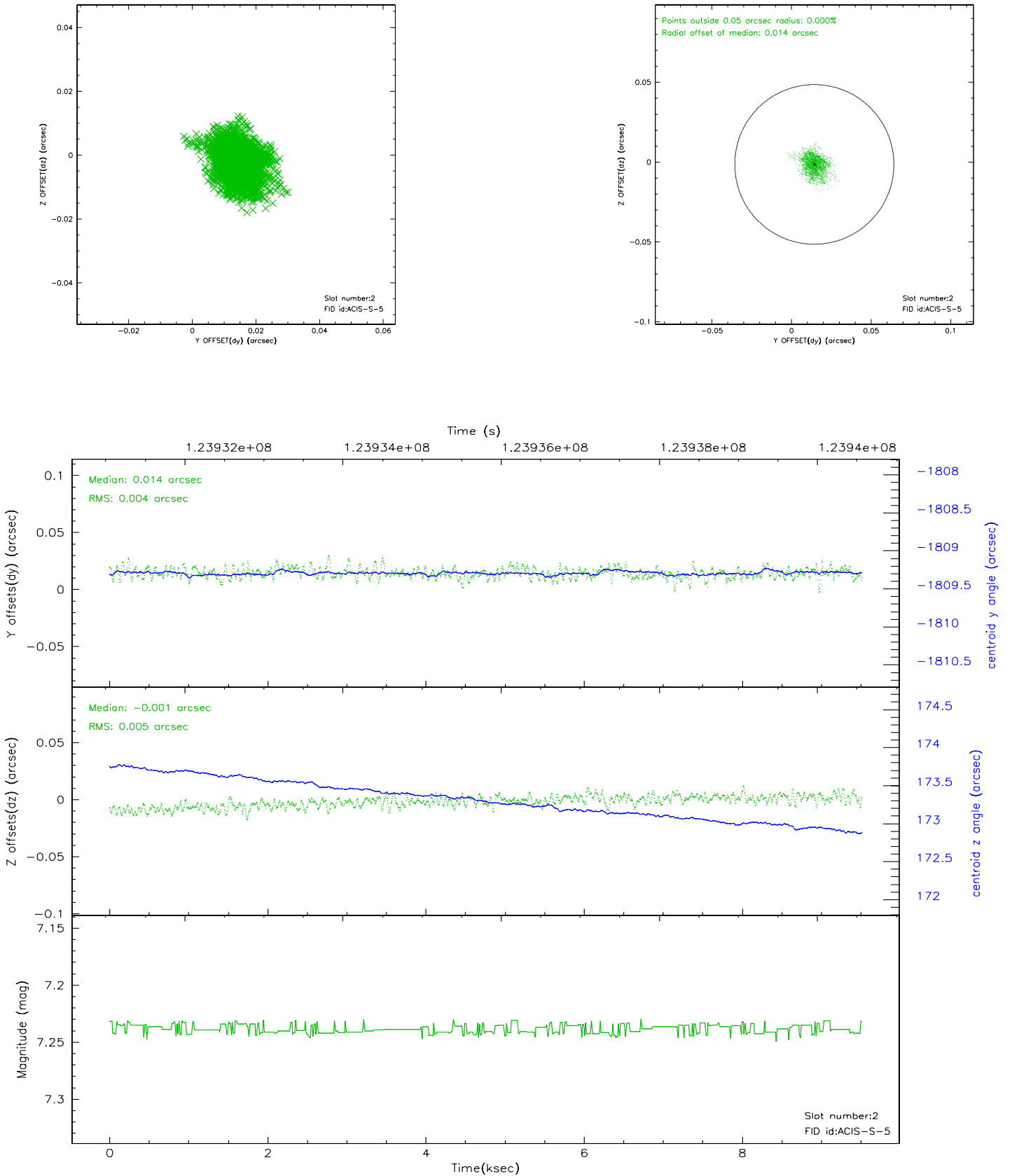
2.5.1 Slot 0



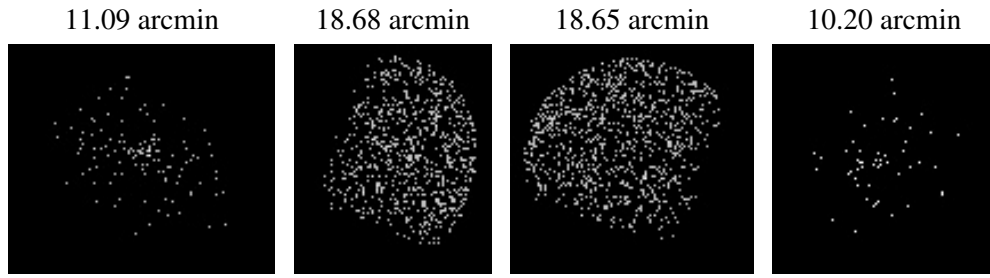
2.5.2 Slot 1



2.5.3 Slot 2



3 Point Sources



A Summary

A.1 Status

V&V Scientist	Beth Sundheim
V&V Date (YYYY-MM-DD)	2007.01.21
V&V Edition	1
V&V Disposition and Status	OK
V&V Charge Time	9.497

A.2 Comments