

V&V Reference Report

L2 ASCDS Version : 7.6.8.1

Observation 2897 - L2 Version 001
Chandra X-Ray Center

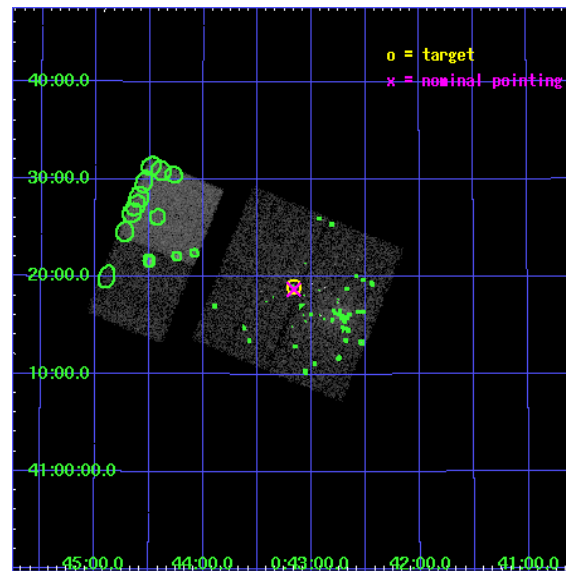
L2 Processing Date : Aug 26 2006

Contents

1	Front	2
2	OBI	3
2.1	OBI	3
2.1.1	Images	3
2.1.2	Bias	3
2.1.3	Parameters	4
2.1.4	Events	4
2.2	Compared Parameters	5
2.3	Aspect	6
2.4	Star Slots	9
2.4.1	Slot 3	9
2.4.2	Slot 4	10
2.4.3	Slot 5	11
2.4.4	Slot 6	12
2.4.5	Slot 7	13
2.5	FID Slots	14
2.5.1	Slot 0	14
2.5.2	Slot 1	15
2.5.3	Slot 2	16
3	Point Sources	17
A	Summary	18
A.1	Status	18
A.2	Comments	18

1 Front

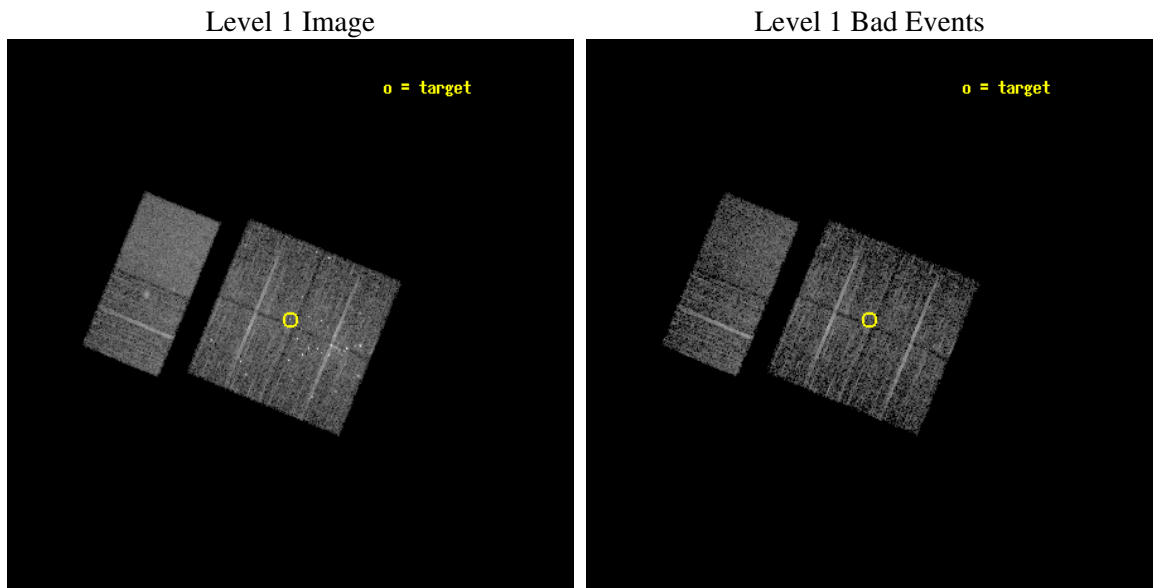
seq_num	600234
obs_id	2897
title	SEARCHING FOR X-RAY TRANSIENTS IN M31 WITH CHANDRA AND HST
observer	Dr. MICHAEL GARCIA
object	M31-T4
dtcycle	0
cycle	P
ra_targ	10.790821
dec_targ	41.316867
ra_nom	10.790833085396
dec_nom	41.312145492076
roll_nom	292.39569050781
revision	2
ontime	4963.2000046223
livetime	4900.3529776836
ontime0	4959.9590443671
ontime1	4963.2000046223
ontime2	4963.2000046223
ontime3	4963.2000046223
ontime6	4963.2000046223
ontime7	4963.2000046223
l2events	54690



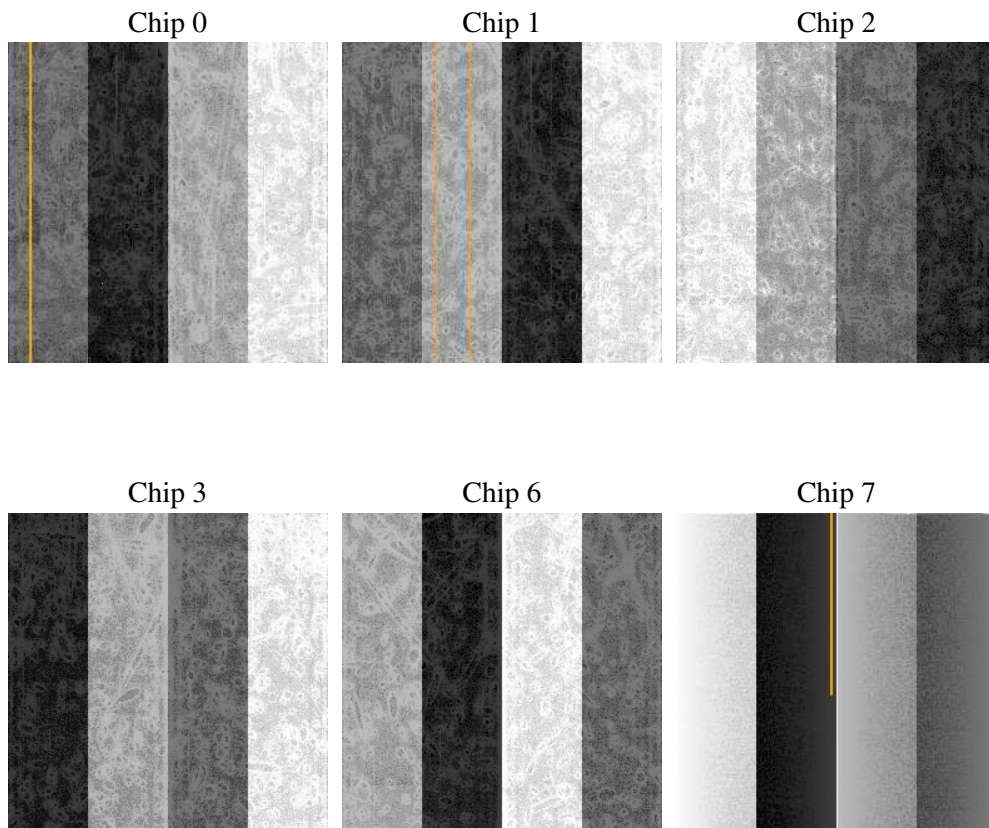
2 OBI

2.1 OBI

2.1.1 Images



2.1.2 Bias



2.1.3 Parameters

obi_num	0
ascdsver	7.6.8.1
caldsver	3.2.3
date	2006-08-26T03:12:02
revision	2

sched_exp_time	5000.000000
ontime	4968.4500599205
ontime0	4965.2090996653
ontime1	4968.4500599205
ontime2	4968.4500599205
ontime3	4968.4500599205
ontime6	4968.4500599205
ontime7	4968.4500599205
l1events	216607

2.1.4 Events

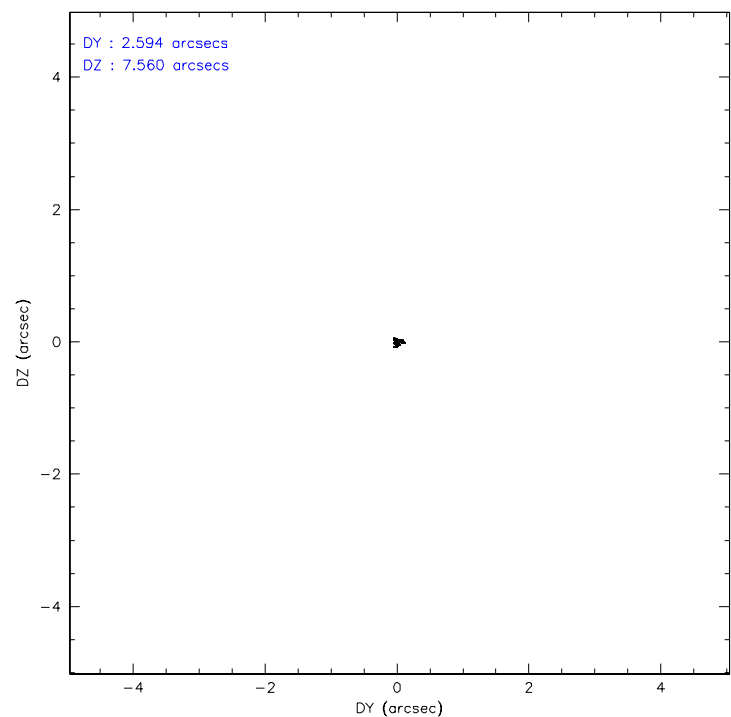
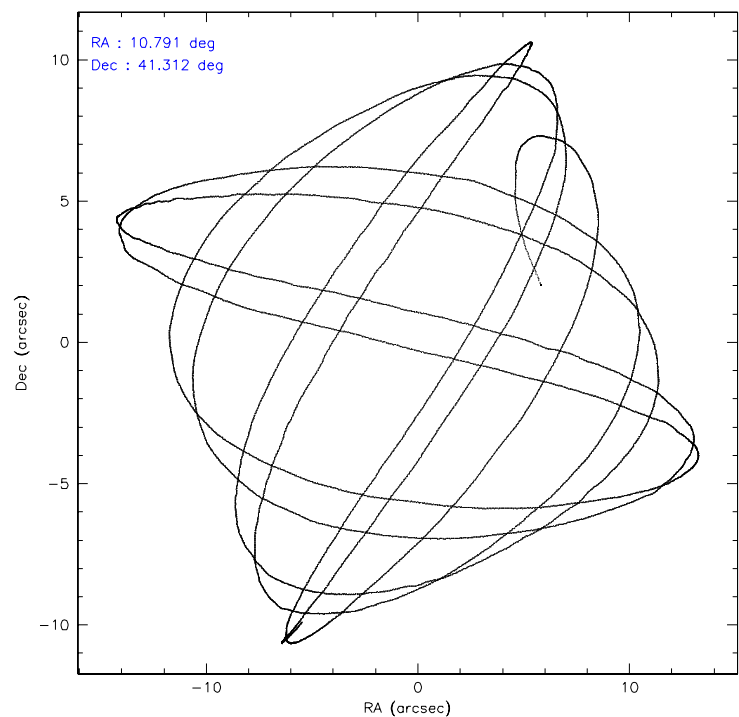
	ccd 0	ccd 1	ccd 2	ccd 3	ccd 6	ccd 7
level 1 events	35565	33686	34807	31763	34988	45798
rejected events	24238	24247	28524	25908	28725	25923
rejected %	68%	71%	81%	81%	82%	56%

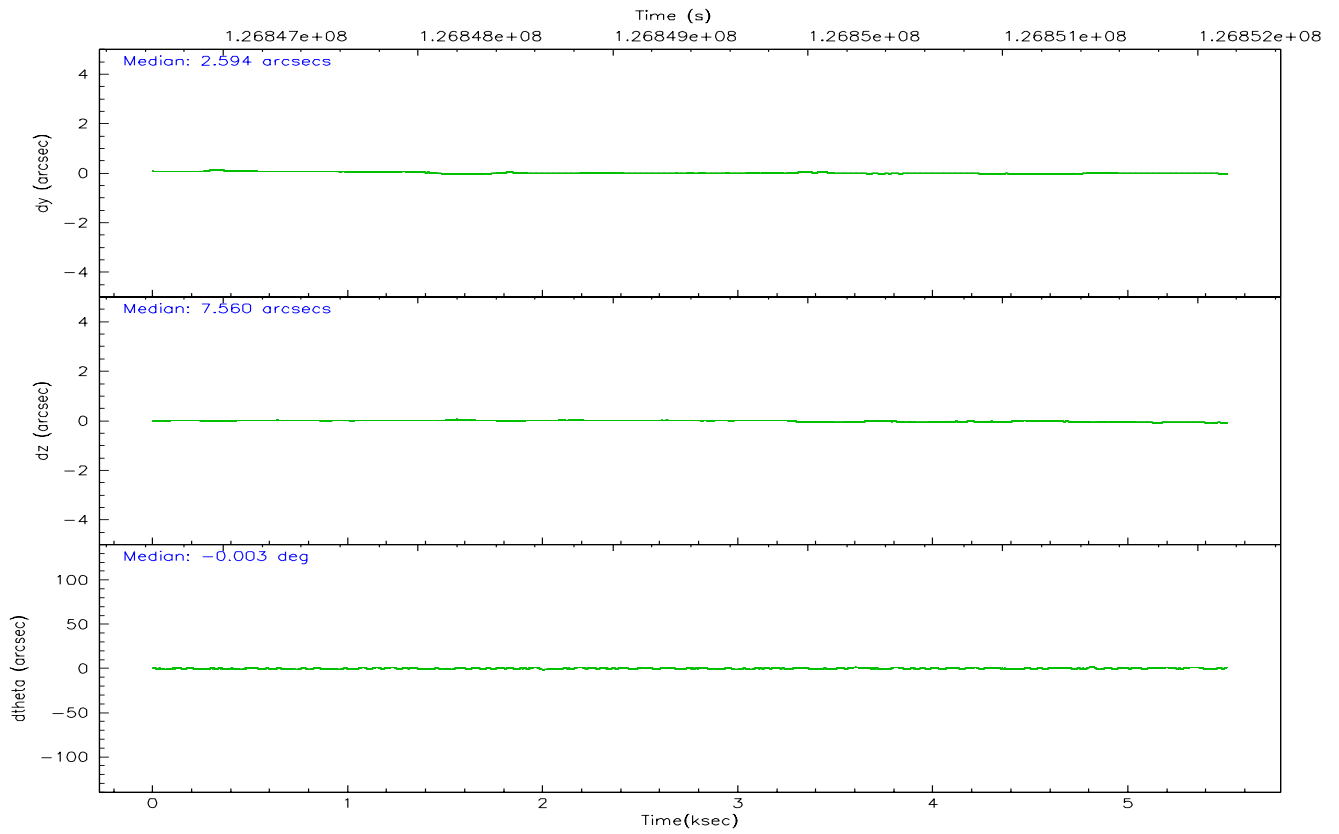
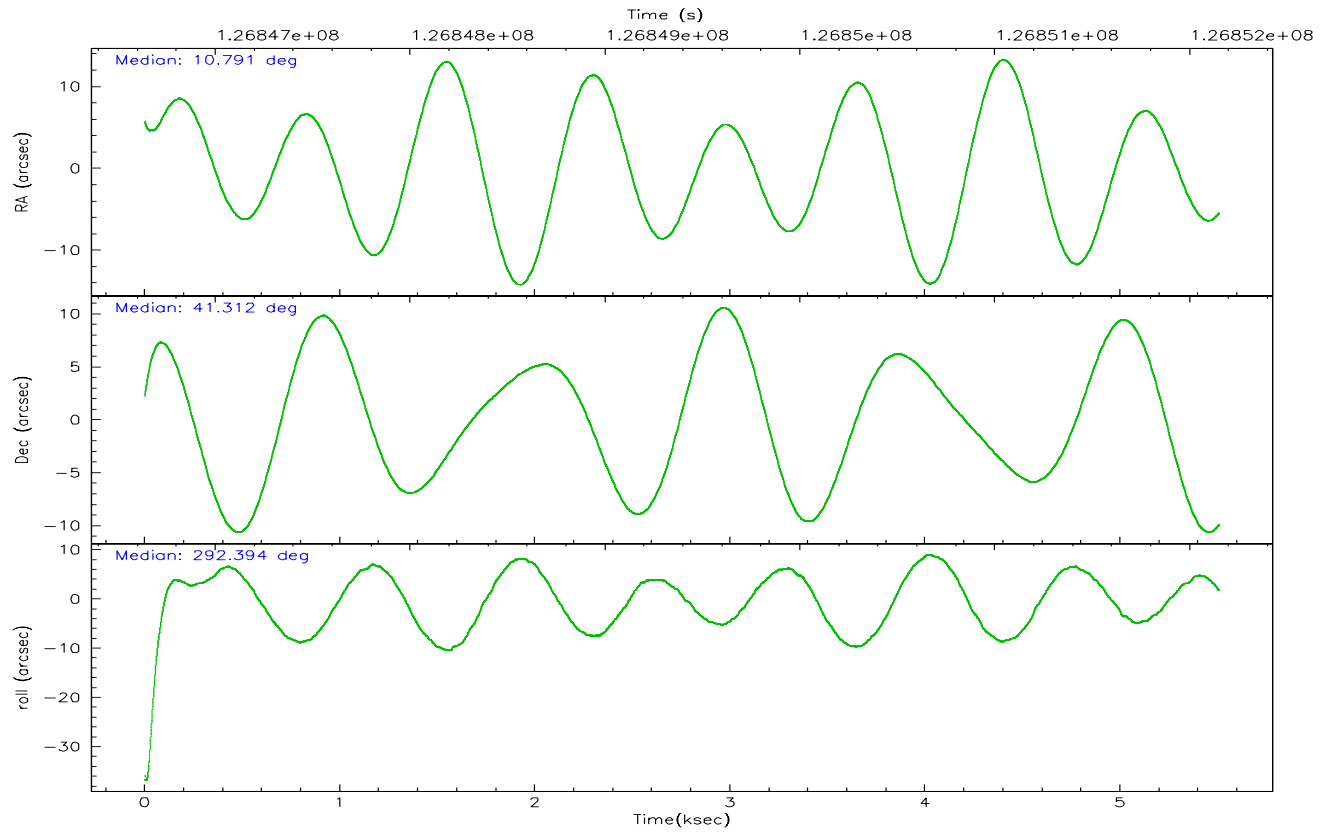
	ccd 0	ccd 1	ccd 2	ccd 3	ccd 6	ccd 7
grade 0 events	7775	6051	3709	3412	3544	1533
	21%	17%	10%	10%	10%	3%
grade 1 events	69	51	19	24	18	26
	0%	0%	0%	0%	0%	0%
grade 2 events	1543	1375	1058	941	999	4727
	4%	4%	3%	2%	2%	10%
grade 3 events	565	571	390	409	460	1061
	1%	1%	1%	1%	1%	2%
grade 4 events	598	558	392	369	421	1012
	1%	1%	1%	1%	1%	2%
grade 5 events	1221	1258	1075	1192	1348	2653
	3%	3%	3%	3%	3%	5%
grade 6 events	865	900	742	729	851	11567
	2%	2%	2%	2%	2%	25%
grade 7 events	22929	22922	27422	24687	27347	23219
	64%	68%	78%	77%	78%	50%

2.2 Compared Parameters

Parameter	Planned	Actual	Parameter	Planned	Actual
Instrument	ACIS	ACIS	Obspar format version number	6	6
Detector	ACIS-012367	ACIS-012367	Obspar file type	PREDICTED	ACTUAL
Grating	NONE	NONE	Obspar update status	NONE	UPDATED
Data mode	FAINT	FAINT	On-chip summing requested	N	N
Observation mode	POINTING	POINTING	Subarray requested	NONE	NONE
Pointing RA	10.761776	10.79083308539566	Alternating exposures requested	N	N
Pointing Dec	41.328843	41.31214549207649	Primary exposure time	0.000000	3.2
Pointing Roll	292.206281	292.3956905078133			
Window start time	126748864.184000	126748864.184000			
Window stop time	127353664.184000	127353664.184000			
SIM focus pos (mm)	-0.782348	-0.7809083437167272			
SIM defocus (mm)	0	0.001439871863259334			
SIM translation stage pos (mm)	-233.592463	-233.5874344608287			
SIM translation stage offset (mm)	0	-0.005018542100998502			
Observation start time	126847151.184000	126846028.49908			
Observation start date	2002-01-08T03:18:07	2002-01-08T03:00:28			
Observation end time	126852151.184000	126852500.34934			
Observation end date	2002-01-08T04:41:27	2002-01-08T04:48:20			
Read mode	TIMED	TIMED			

2.3 Aspect



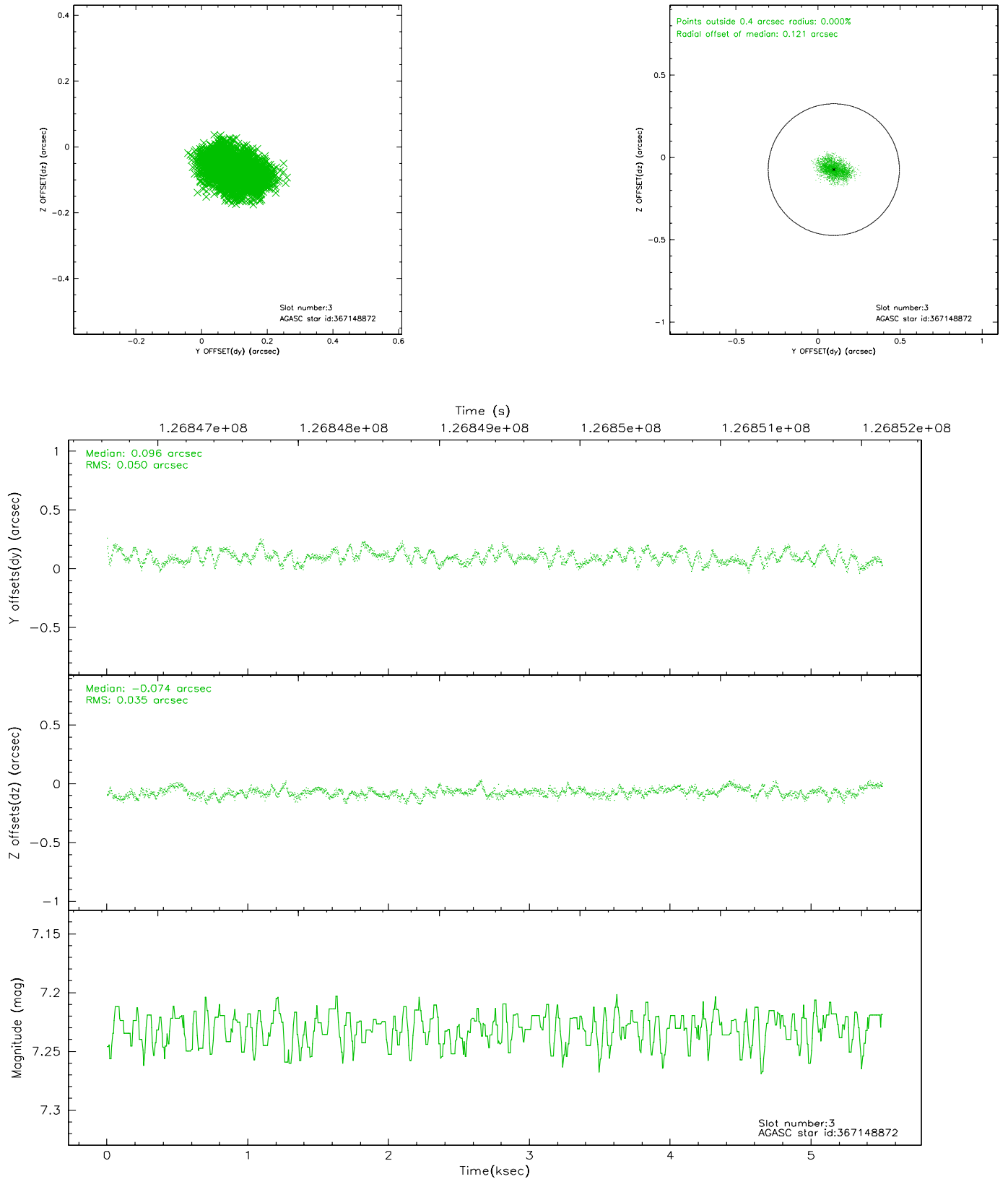


Slot Statistics

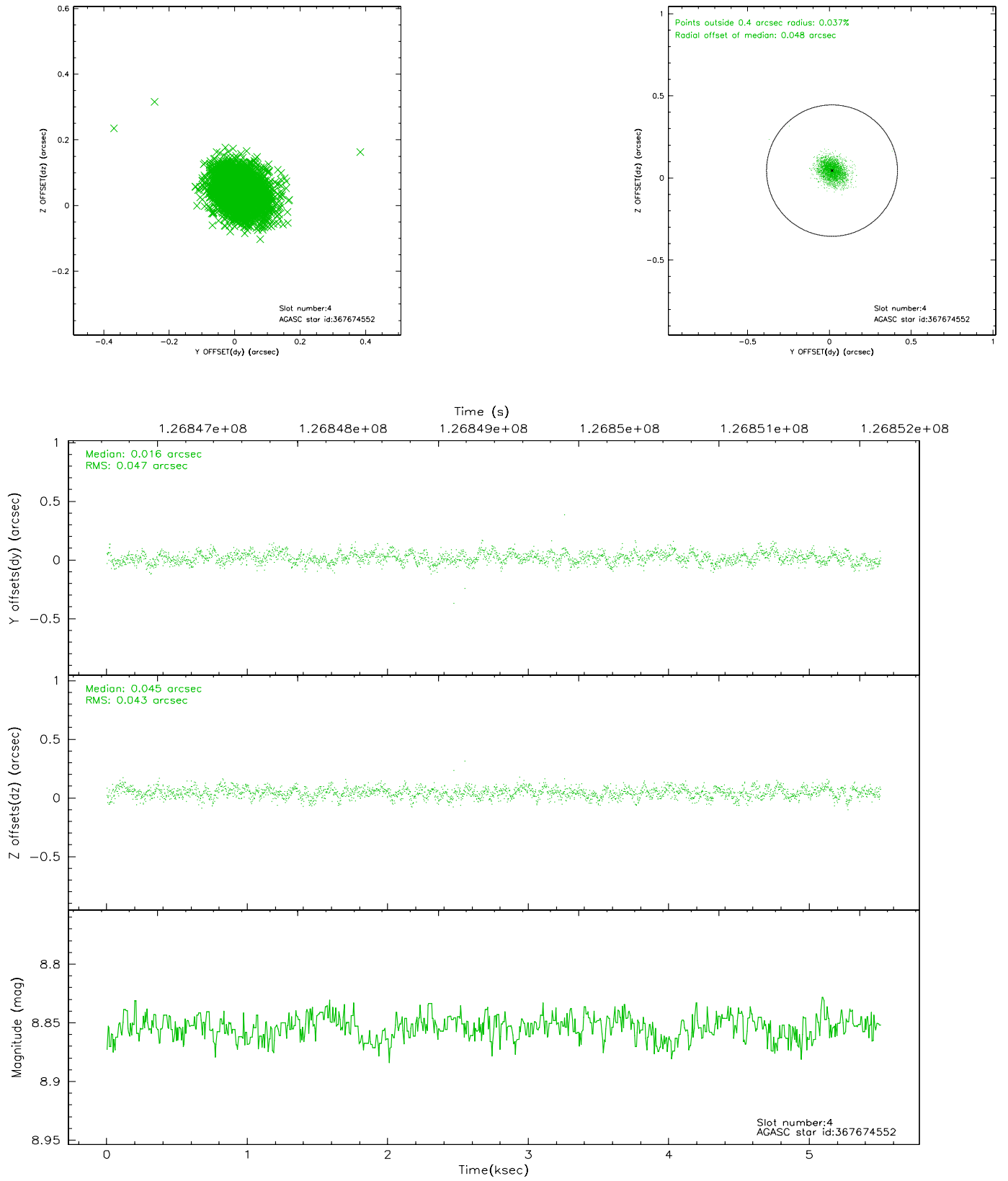
slot	status	id	mag	n_pts	med_dy	med_dz	dr1	dr2	ra	dec	mean_y	mean_z
0	FID	ACIS-I-3	7.44	1343	-0.033	0.216	0.007	0.012	0.000000	0.000000	54.59	-963.97
1	FID	ACIS-I-5	7.23	1343	-0.015	-0.004	0.006	0.011	0.000000	0.000000	-1810.98	1065.87
2	FID	ACIS-I-6	7.26	1344	-0.044	-0.144	0.006	0.011	0.000000	0.000000	401.50	1711.59
3	GUIDE	367148872	7.23	2688	0.096	-0.074	0.066	0.104	10.505940	40.688258	1869.24	-1519.03
4	GUIDE	367674552	8.85	2686	0.016	0.045	0.067	0.108	11.016238	41.570845	-549.02	962.49
5	GUIDE	367146616	8.84	2688	0.093	0.068	0.081	0.132	11.418645	41.190163	1127.17	1460.72
6	GUIDE	367671800	9.40	2684	-0.134	-0.057	0.072	0.120	10.554735	41.964935	-2331.11	351.87
7	GUIDE	367665472	9.48	2685	-0.074	0.022	0.087	0.139	10.241611	41.730843	-1874.06	-746.35

2.4 Star Slots

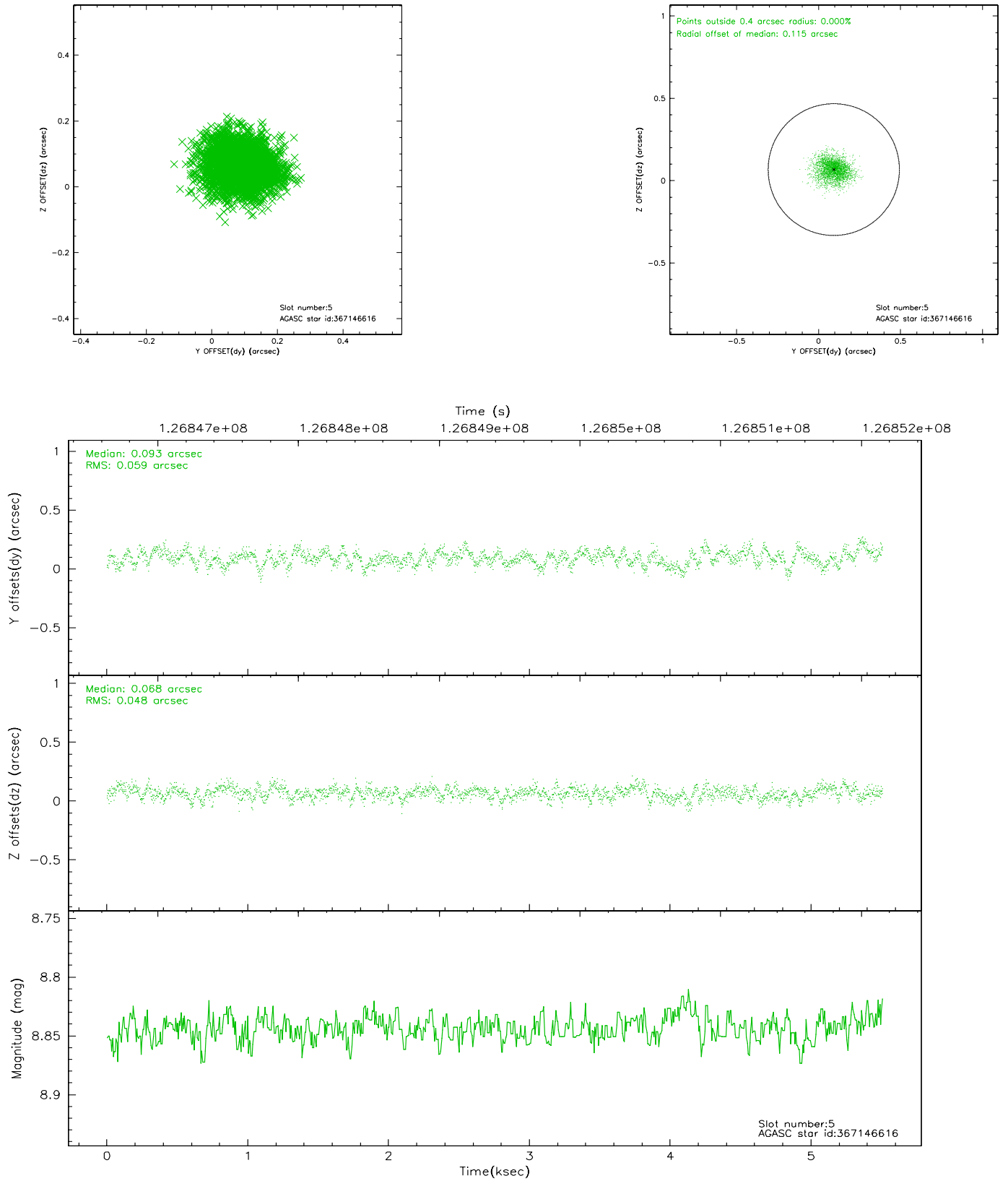
2.4.1 Slot 3



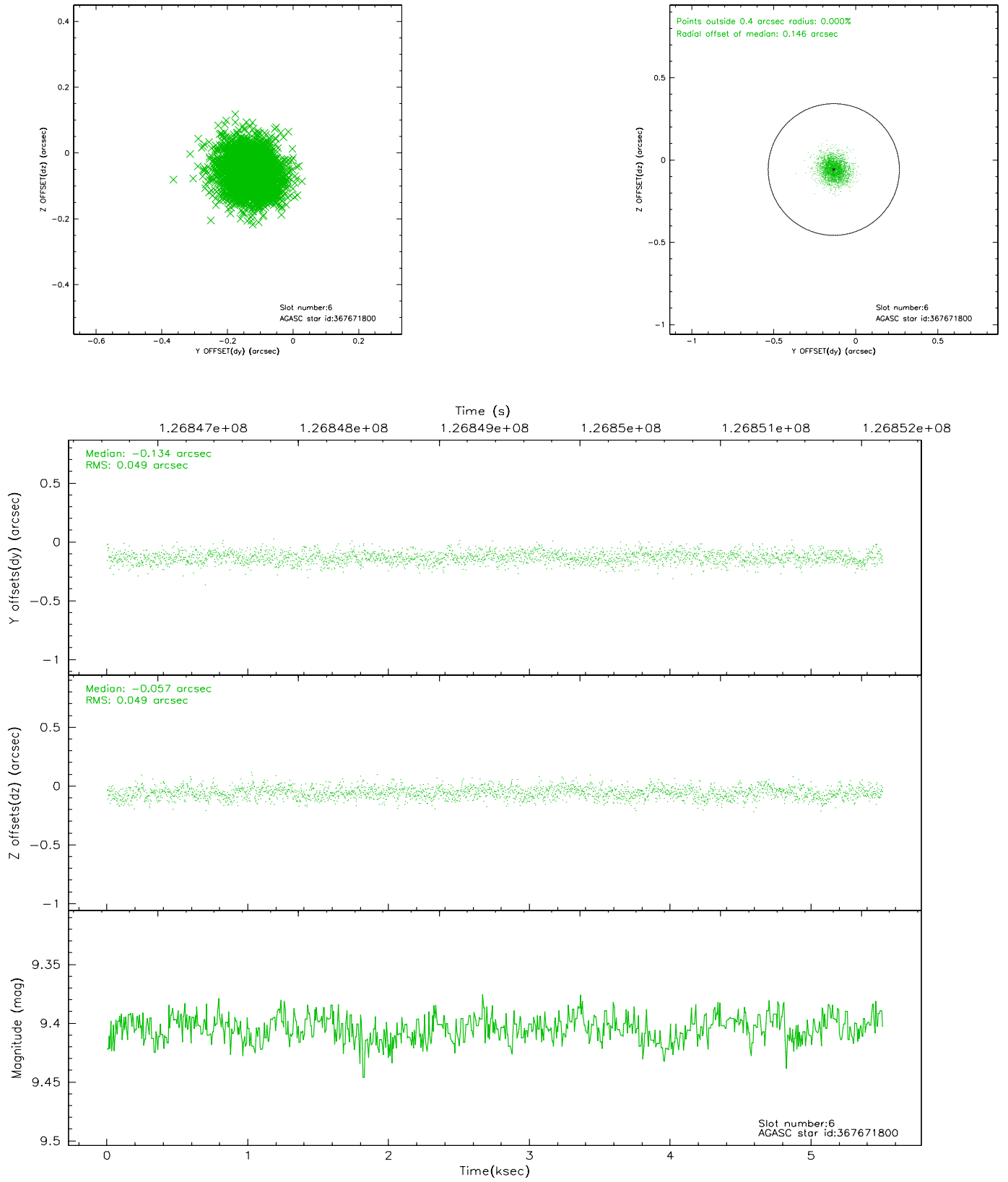
2.4.2 Slot 4



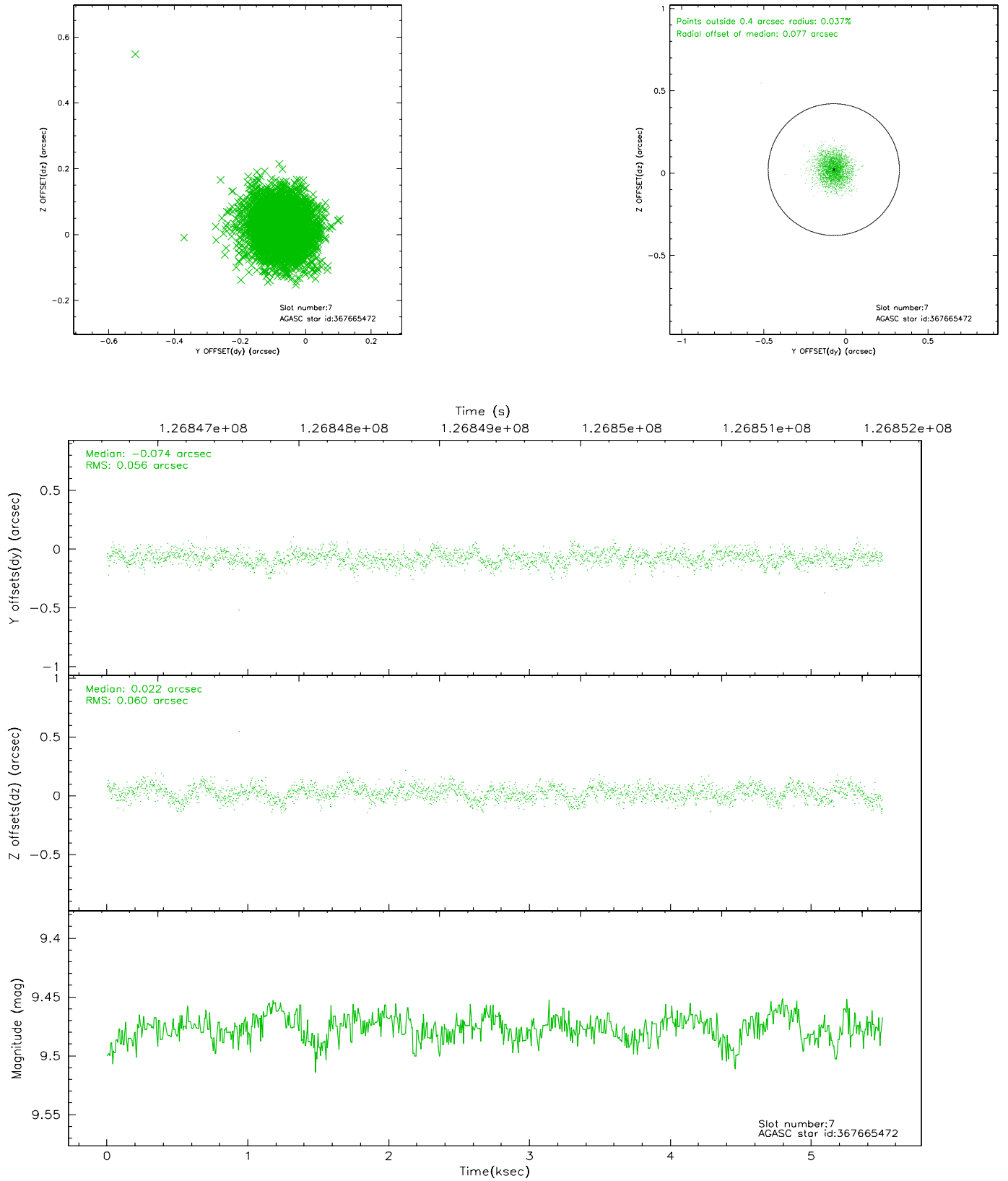
2.4.3 Slot 5



2.4.4 Slot 6

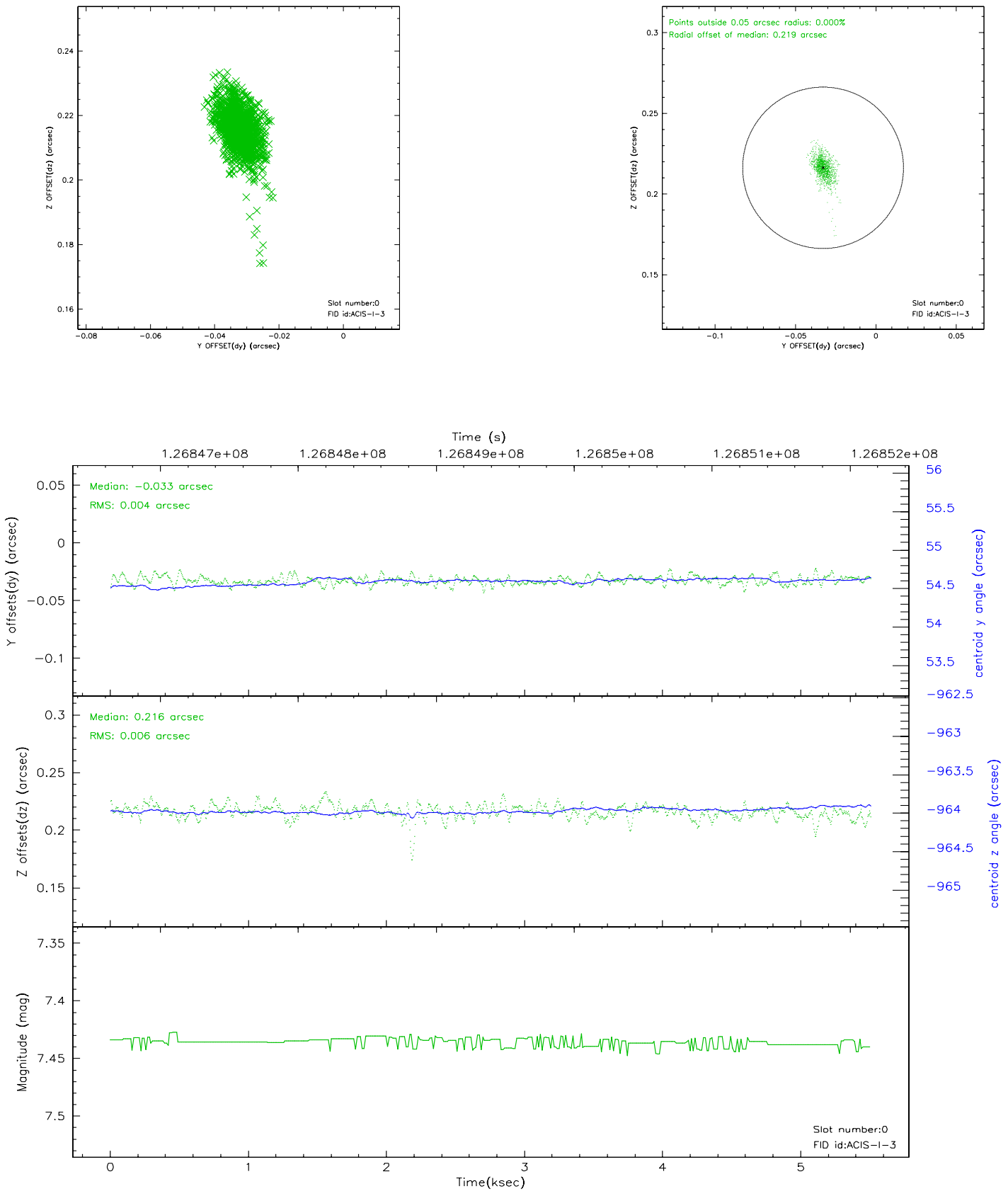


2.4.5 Slot 7

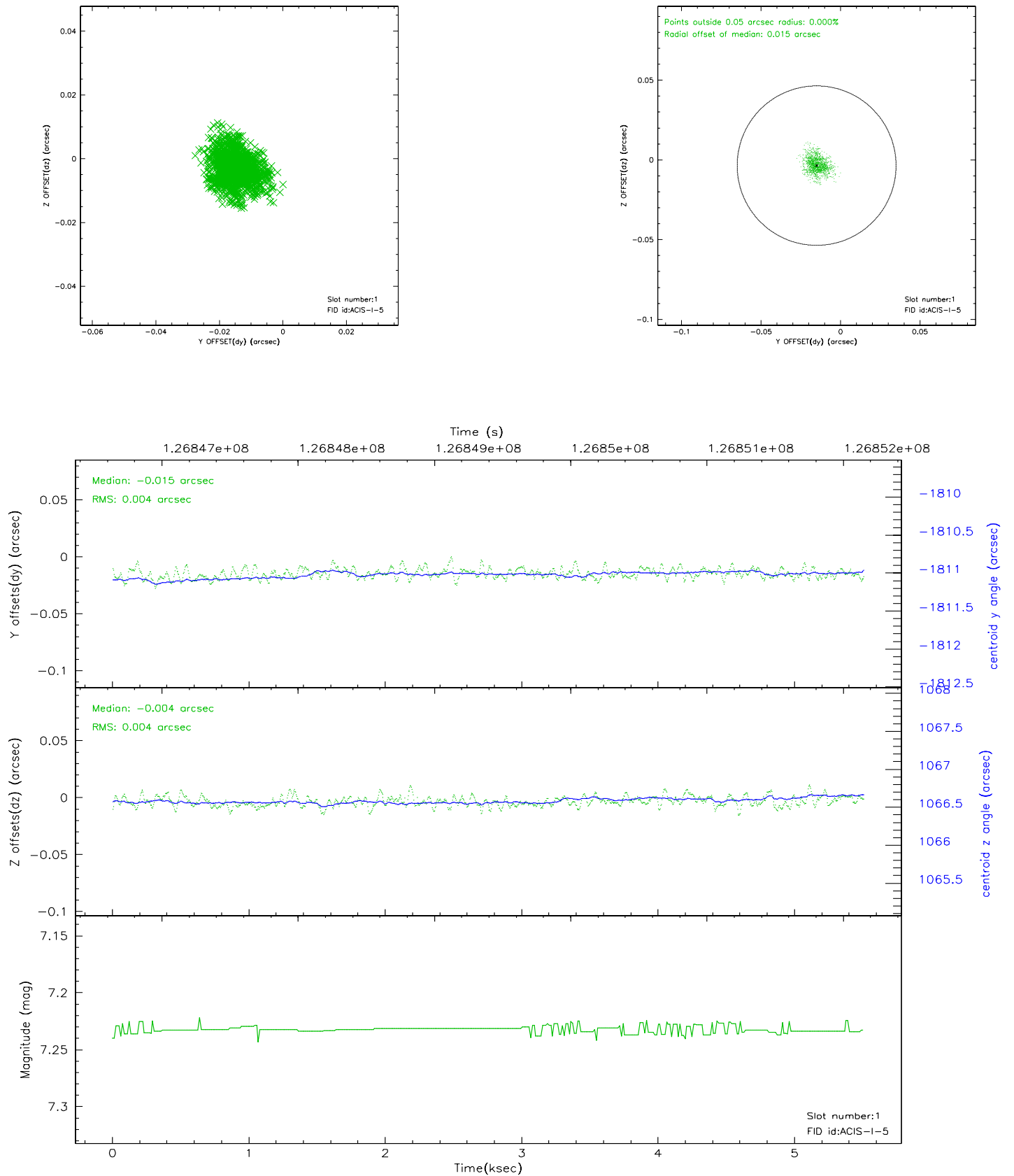


2.5 FID Slots

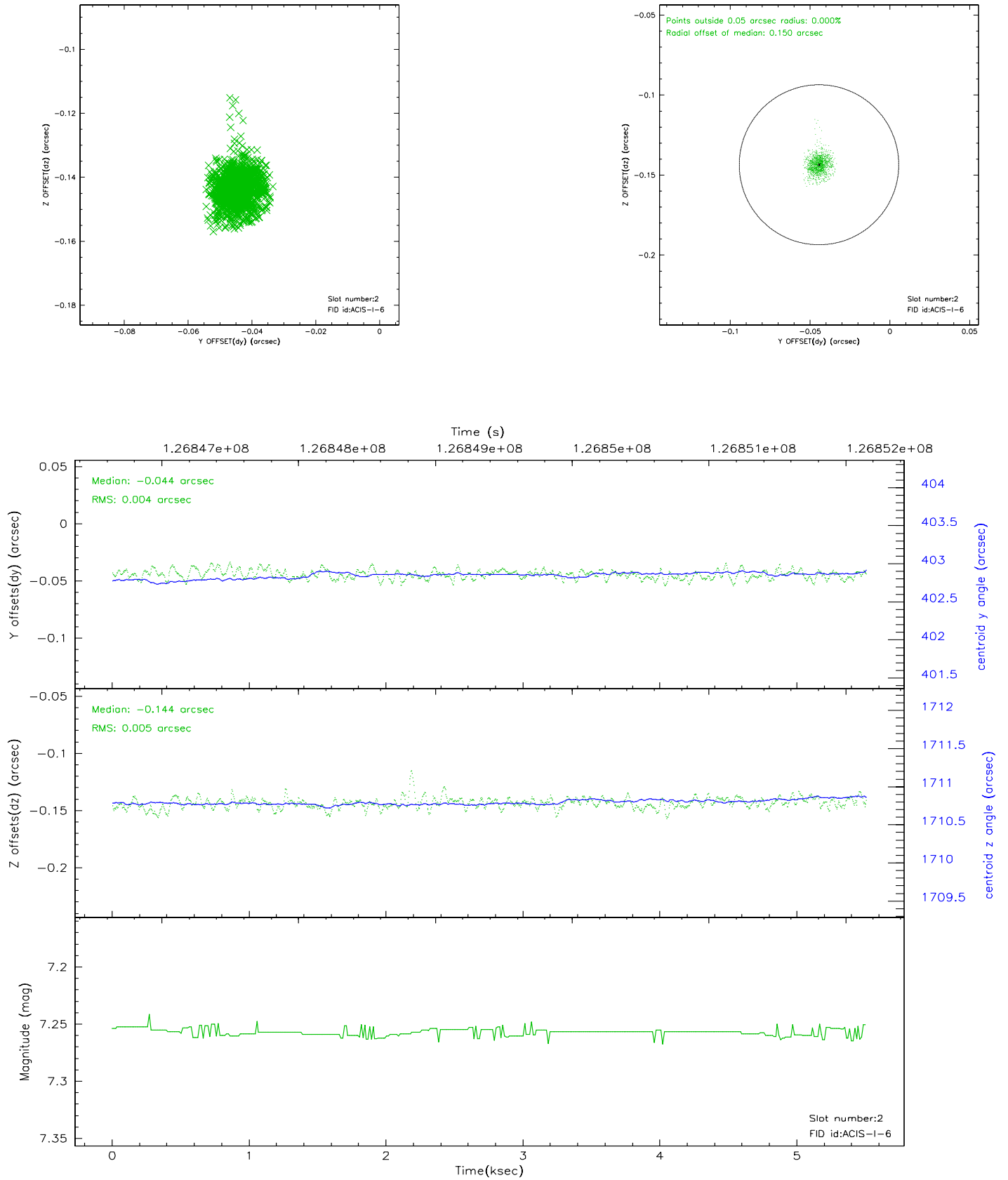
2.5.1 Slot 0



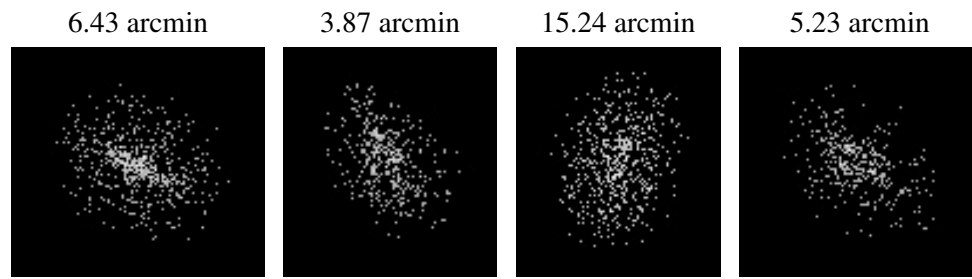
2.5.2 Slot 1



2.5.3 Slot 2



3 Point Sources



A Summary

A.1 Status

V&V Scientist	Jen Lauer
V&V Date (YYYY-MM-DD)	2006.08.28
V&V Edition	1
V&V Disposition and Status	OK
V&V Charge Time	4.966

A.2 Comments

Window constraint met.