

V&V Reference Report

L2 ASCDS Version : 8.4.5

Observation 2687 - L2 Version 3
Chandra X-Ray Center

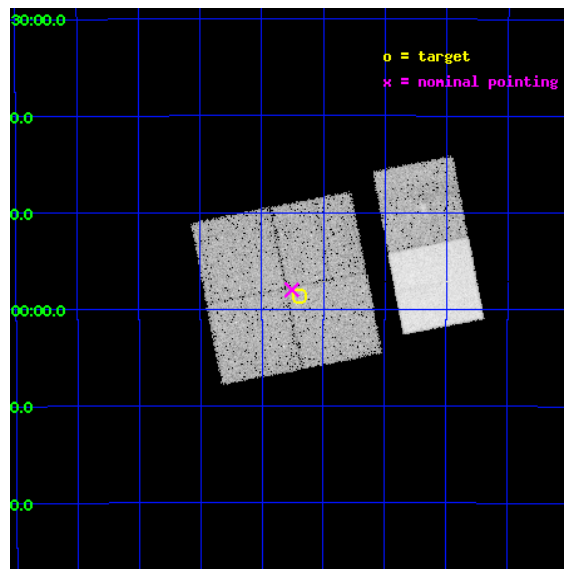
L2 Processing Date : Oct 7 2012

Contents

1	Front	2
2	OBI	3
2.1	OBI	3
2.1.1	Images	3
2.1.2	Bias	3
2.1.3	Parameters	4
2.1.4	Events	4
2.2	Compared Parameters	5
2.3	Aspect	6
2.4	Star Slots	9
2.4.1	Slot 3	9
2.4.2	Slot 4	10
2.4.3	Slot 5	11
2.4.4	Slot 6	12
2.4.5	Slot 7	13
2.5	FID Slots	14
2.5.1	Slot 0	14
2.5.2	Slot 1	15
2.5.3	Slot 2	16
A	Summary	17
A.1	Status	17
A.2	Comments	17

1 Front

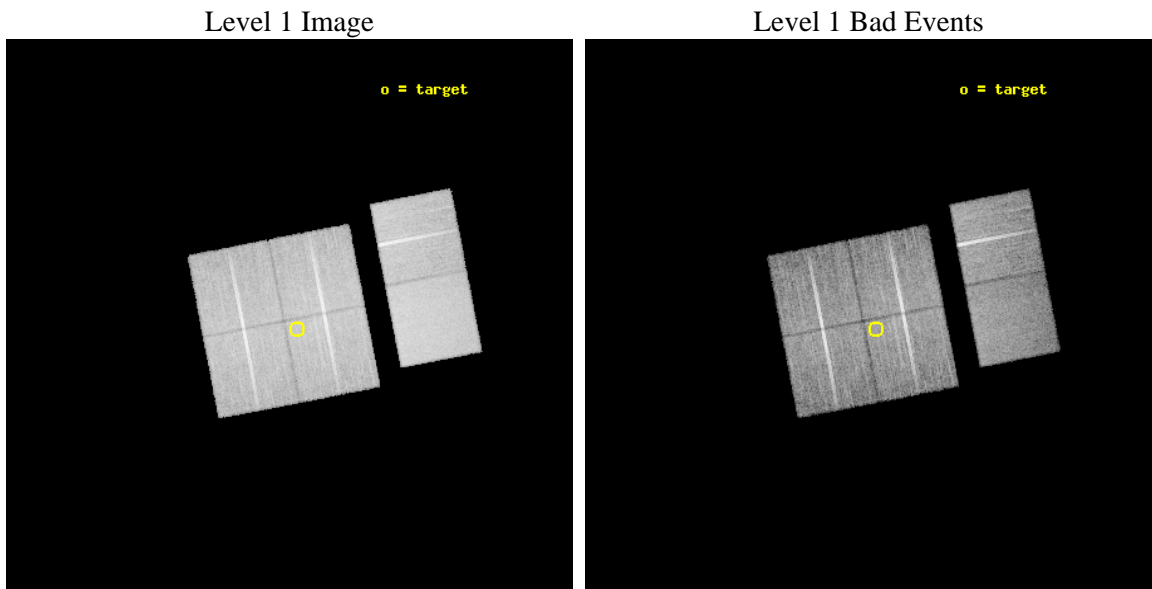
seq_num	400167	Sequence number
obs_id	2687	Observation id
title	UNTWISTING THE TORNADO	Proposal title
observer	Prof. Bryan Gaensler	Principal investigator
object	TORNADO	Source name
dtcycle	0	
cycle	P	events from which exps? Prim/Second/Both
ra_targ	265.04875	Observer's specified target RA [deg]
dec_targ	-30.977278	Observer's specified target Dec [deg]
ra_nom	265.06388356007	Nominal RA [deg]
dec_nom	-30.966446379519	Nominal Dec [deg]
roll_nom	79.038595358799	Nominal Roll [deg]
revision	3	Processing version of data
ontime	20985.59417671	Sum of GTIs [s]
livetime	20719.861947236	Livetime [s]
ontime0	20985.47105673	Sum of GTIs [s]
ontime1	20985.512096703	Sum of GTIs [s]
ontime2	20985.553136706	Sum of GTIs [s]
ontime3	20985.59417671	Sum of GTIs [s]
ontime6	20985.599921823	Sum of GTIs [s]
ontime7	20985.599921823	Sum of GTIs [s]
l2events	149353	Number of level 2 events



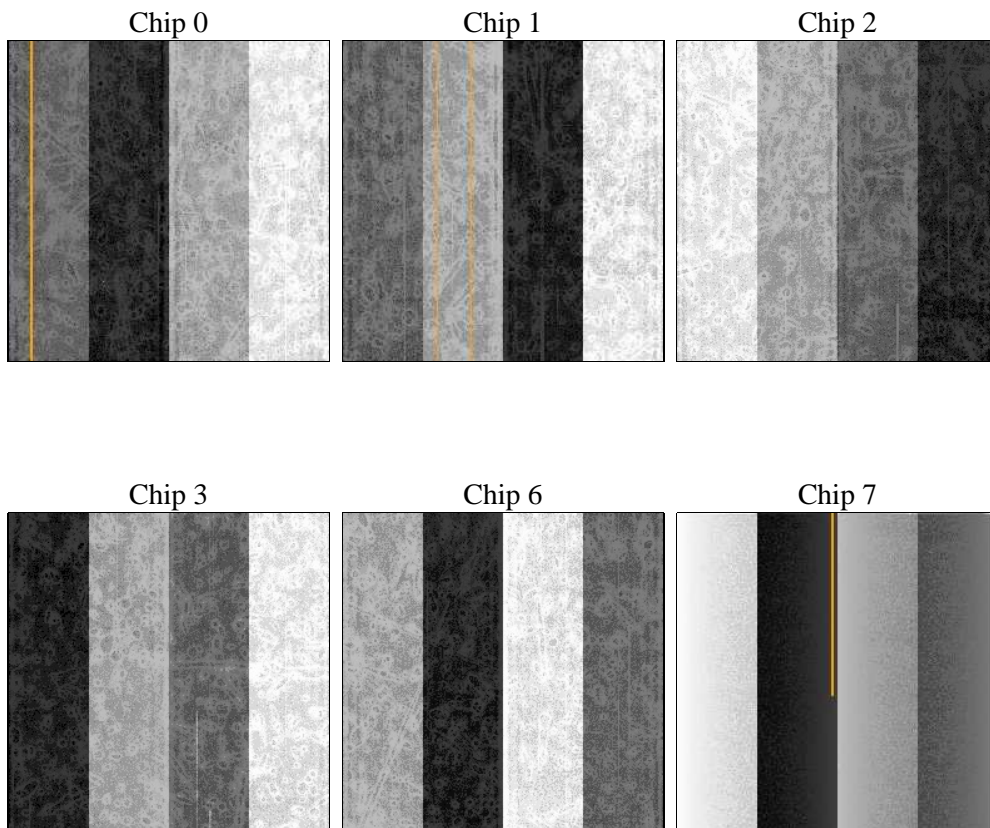
2 OBI

2.1 OBI

2.1.1 Images



2.1.2 Bias



2.1.3 Parameters

obi_num	2	Obi number	sched_exp_time	21000.000000	[s] Scheduled observation exposure time
ascdsver	8.4.5	Processing system revision	ontime	20985.59417671	Sum of GTIs [s]
caldsver	4.5.2	 	ontime0	20985.47105673	Sum of GTIs [s]
date	2012-10-07T09:17:34	Date and time of file creation	ontime1	20985.512096703	Sum of GTIs [s]
revision	3	Processing version of data	ontime2	20985.553136706	Sum of GTIs [s]
			ontime3	20985.59417671	Sum of GTIs [s]
			ontime6	20985.599921823	Sum of GTIs [s]
			ontime7	20985.599921823	Sum of GTIs [s]
			l1events	860681	Number of level 1 events

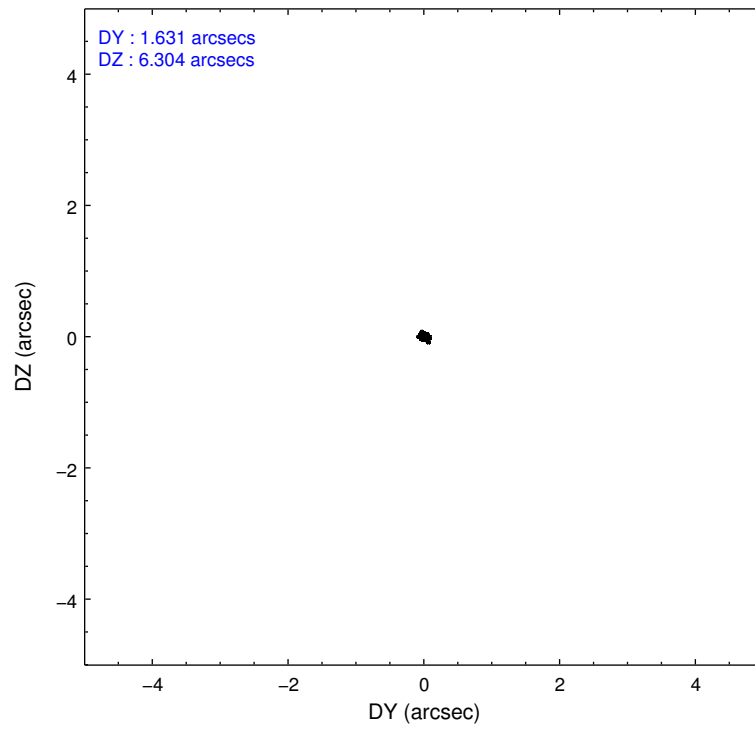
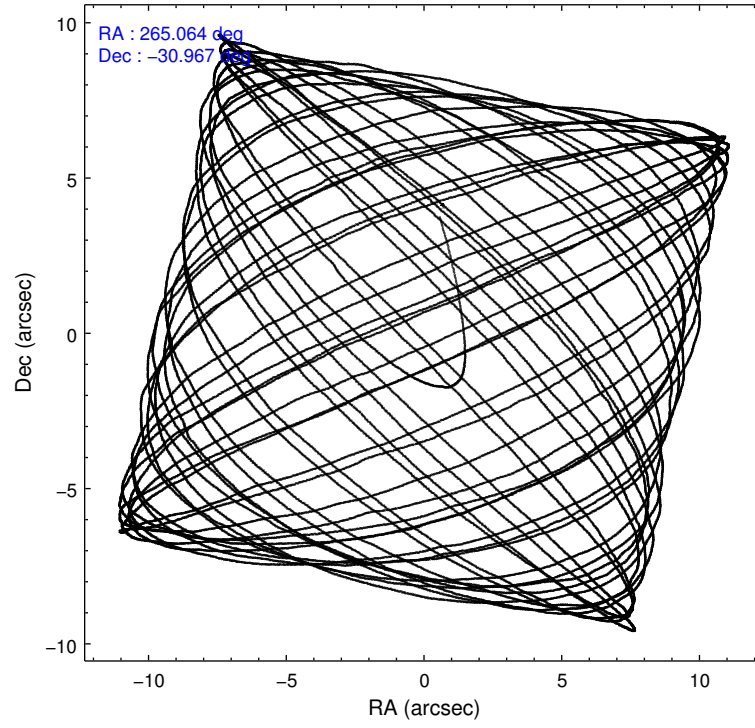
2.1.4 Events

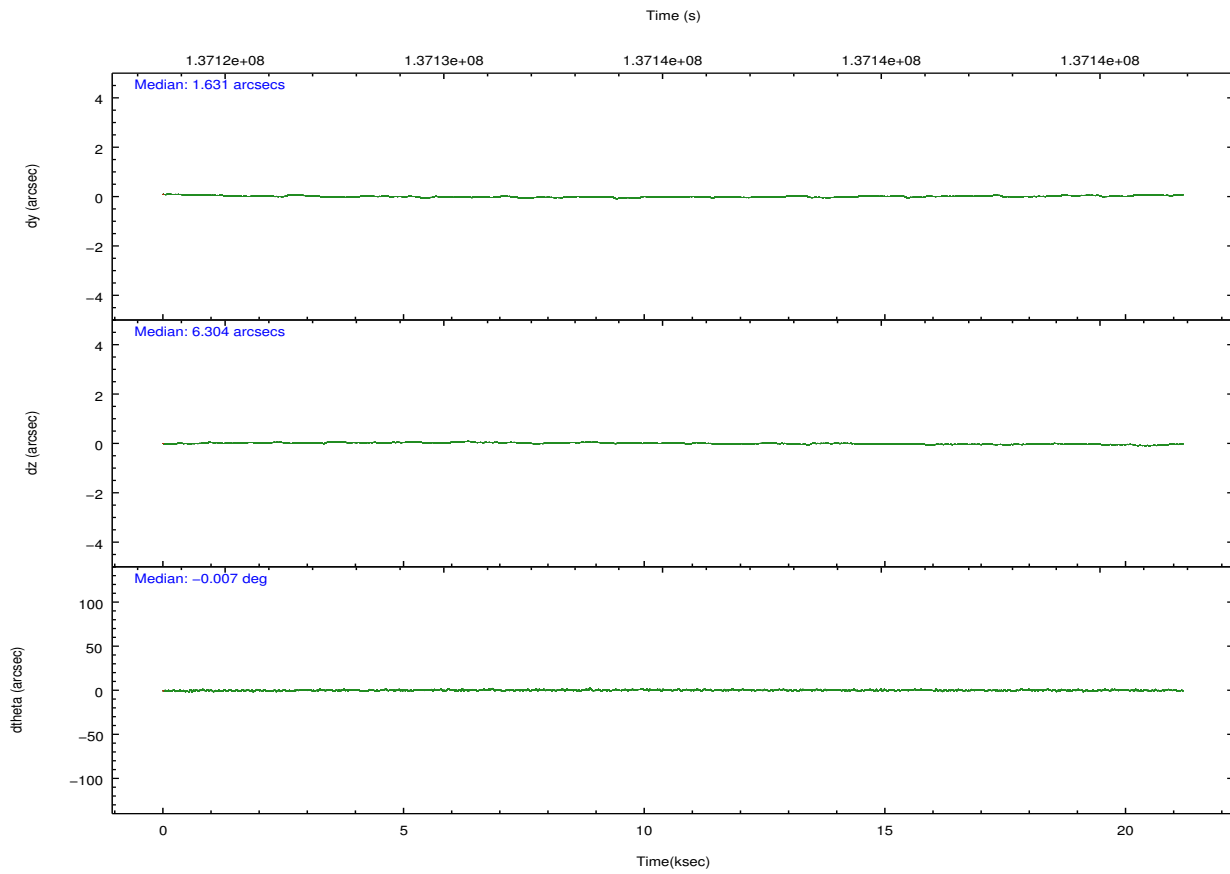
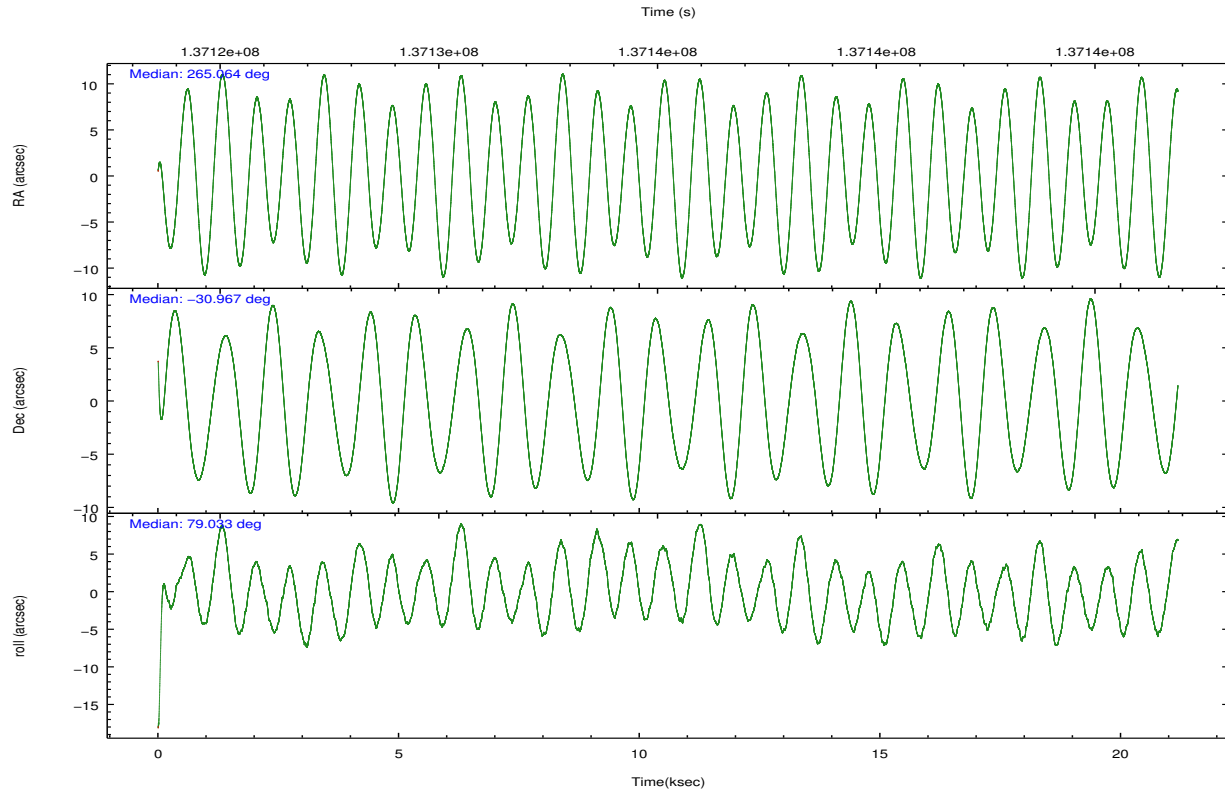
	ccd 0	ccd 1	ccd 2	ccd 3	ccd 6	ccd 7		ccd 0	ccd 1	ccd 2	ccd 3	ccd 6	ccd 7
level 1 events	125966	129503	139111	139419	146155	180527	grade 0 events	7805	7582	7701	7720	7568	6902
rejected events	108352	111461	121952	122115	128373	105316		6%	5%	5%	5%	5%	3%
rejected %	86%	86%	87%	87%	87%	58%	grade 1 events	65	68	67	70	71	175
								0%	0%	0%	0%	0%	0%
							grade 2 events	3600	3671	3597	3461	3697	14856
								2%	2%	2%	2%	2%	8%
							grade 3 events	1656	1726	1520	1544	1578	6880
								1%	1%	1%	1%	1%	3%
							grade 4 events	1608	1710	1492	1567	1621	6659
								1%	1%	1%	1%	1%	3%
							grade 5 events	5108	5545	4838	5569	6257	17250
								4%	4%	3%	3%	4%	9%
							grade 6 events	2952	3360	2855	3014	3322	39928
								2%	2%	2%	2%	2%	22%
							grade 7 events	103172	105841	117041	116474	122041	87877
								81%	81%	84%	83%	83%	48%

2.2 Compared Parameters

Parameter	Planned	Actual	Parameter	Planned	Actual
Instrument	ACIS	ACIS	Obspar format version number	7	7
Detector	ACIS-012367	ACIS-012367	Obspar file type	PREDICTED	ACTUAL
Grating	NONE	NONE	Obspar update status	NONE	UPDATED
Data mode	FAINT	FAINT	Number of optional ACIS chips dropped	0	0
Observation mode	POINTING	POINTING	On-chip summing requested	N	N
[deg] Pointing RA	265.074411	265.0638835600669	Subarray requested	NONE	NONE
[deg] Pointing Dec	-30.992324	-30.9664463795192	Alternating exposures requested	N	N
[deg] Pointing Roll	78.835335	79.03859535879904	[s] Primary exposure time	0.000000	3.2
[mm] SIM focus pos	-0.782348	-0.7809083437167272			
[mm] SIM defocus	0	0.001439871863259334			
[mm] SIM translation stage pos	-233.592463	-233.5874344608287			
[mm] SIM translation stage offset	0	-0.005018542100998502			
[s] Observation start time (MET)	137124832.184000	137123858.69007			
Observation start date	2002-05-07T02:12:48	2002-05-07T01:57:38			
[s] Observation end time (MET)	137145832.184000	137146544.5035			
Observation end date	2002-05-07T08:02:48	2002-05-07T08:15:44			
Read mode	TIMED	TIMED			

2.3 Aspect



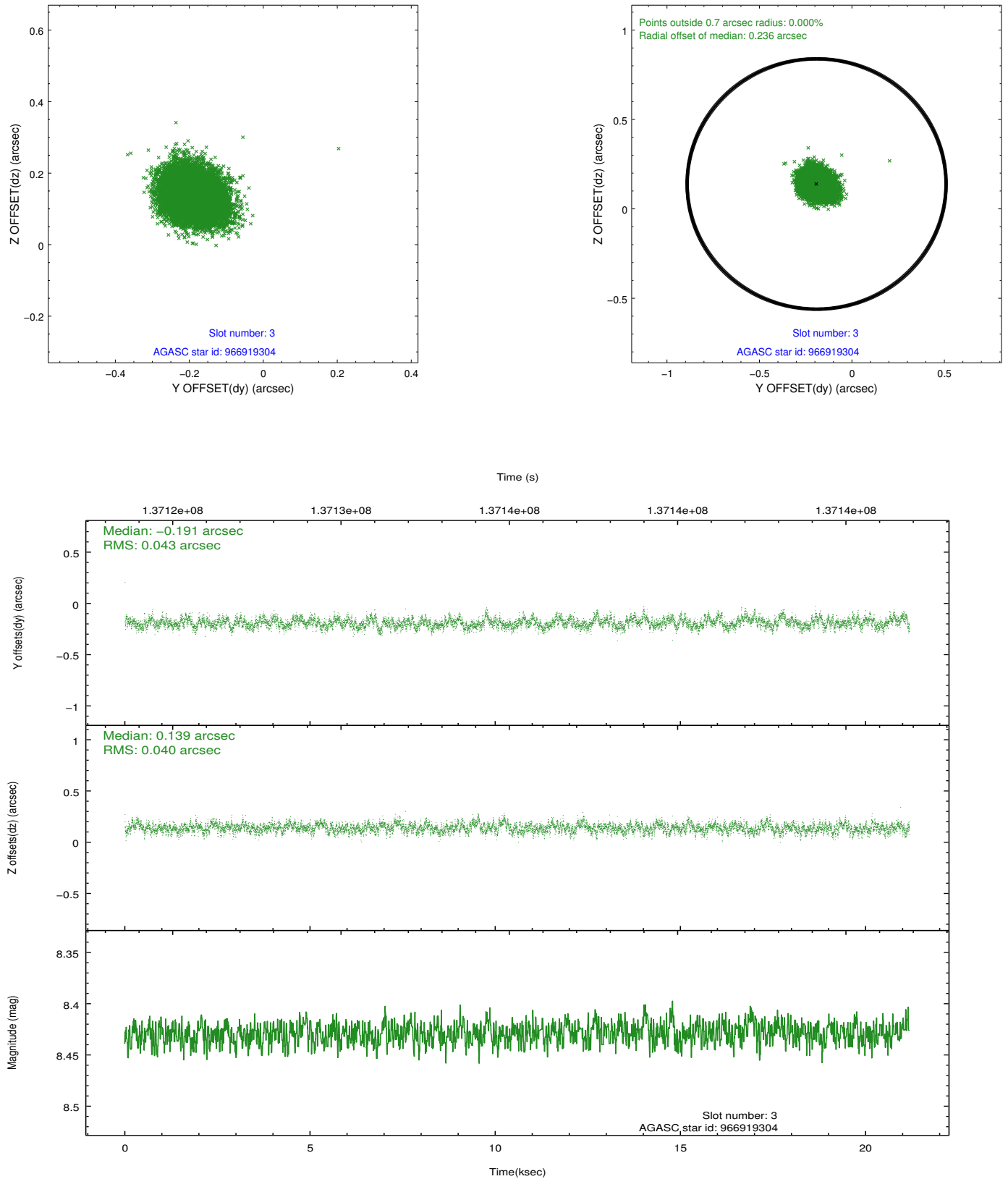


Slot Statistics

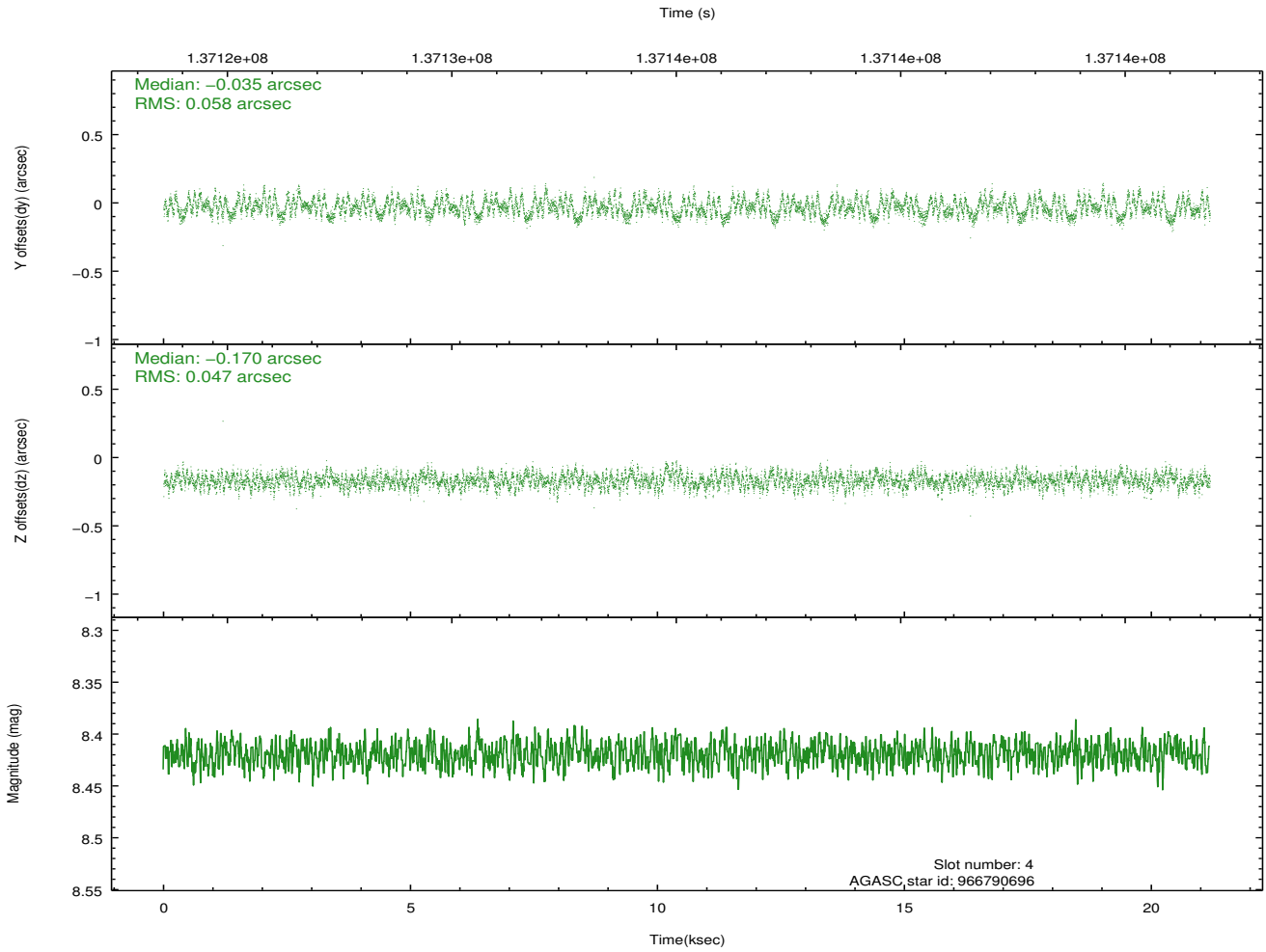
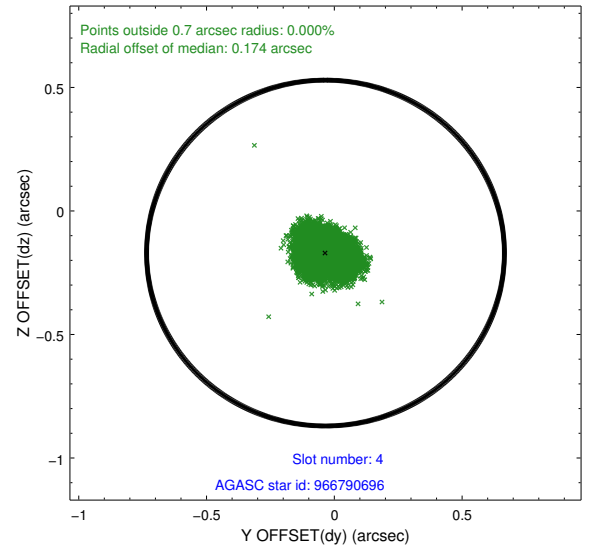
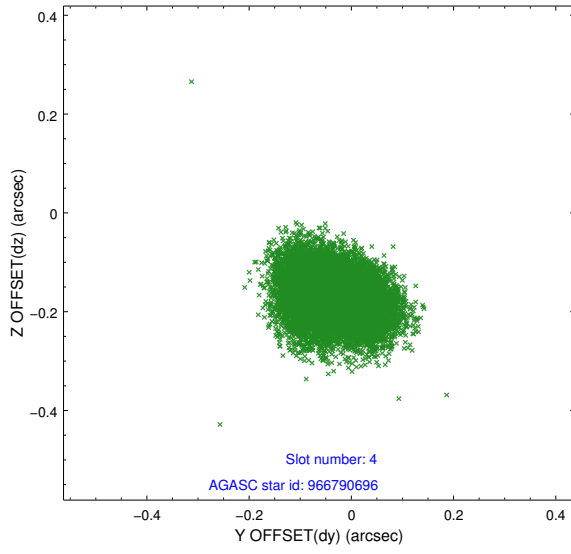
slot	status	id	mag	n_pts	med_dy	med_dz	dr1	dr2	ra	dec	mean_y	mean_z
0	FID	ACIS-I-1	7.25	5166	-0.013	-0.120	0.007	0.011	0.000000	0.000000	938.27	-829.71
1	FID	ACIS-I-3	7.45	5166	0.009	0.210	0.007	0.011	0.000000	0.000000	55.90	-962.86
2	FID	ACIS-I-6	7.25	5167	-0.084	-0.022	0.006	0.011	0.000000	0.000000	403.68	1712.04
3	GUIDE	966919304	8.43	10334	-0.191	0.139	0.062	0.101	265.660763	-30.717261	1319.67	-1589.11
4	GUIDE	966790696	8.42	10332	-0.035	-0.170	0.080	0.124	264.462516	-30.909486	-77.09	1910.80
5	GUIDE	966920024	8.85	10328	-0.102	0.125	0.079	0.122	265.515080	-30.492187	2029.96	-992.37
6	GUIDE	966793104	9.02	10325	0.091	0.064	0.084	0.134	265.489379	-31.350728	-1019.32	-1501.86
7	GUIDE	966794320	9.54	10326	0.242	-0.157	0.130	0.210	264.305848	-31.385846	-1853.90	2041.14

2.4 Star Slots

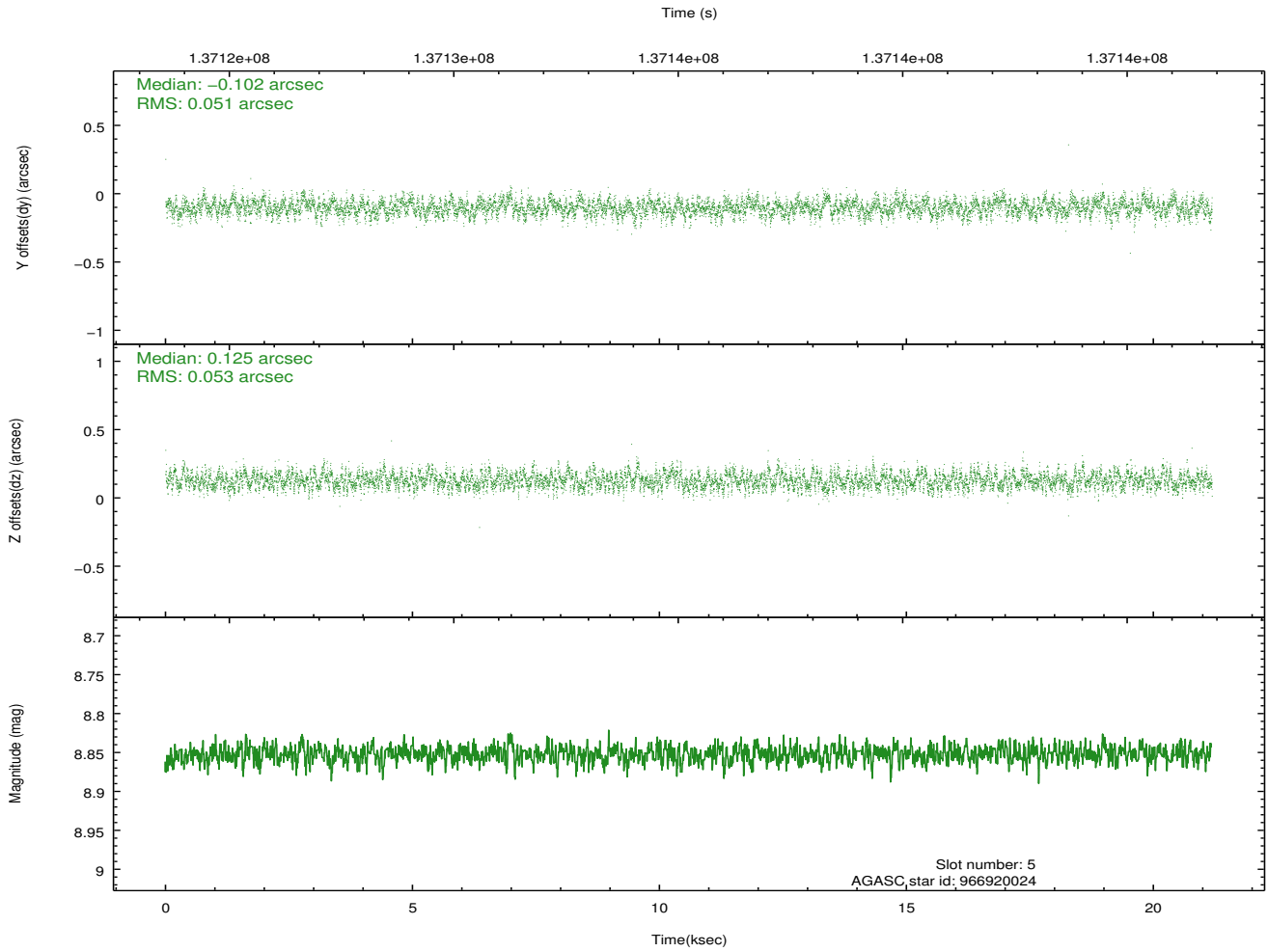
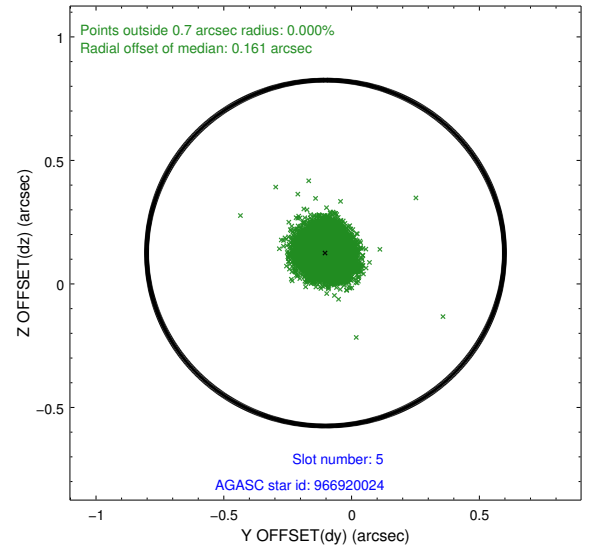
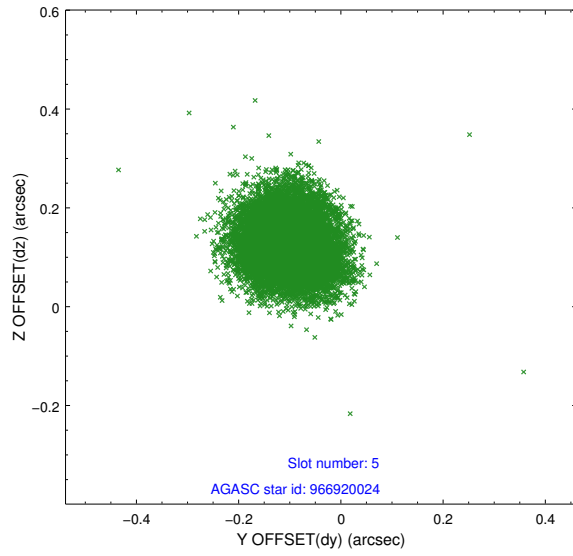
2.4.1 Slot 3



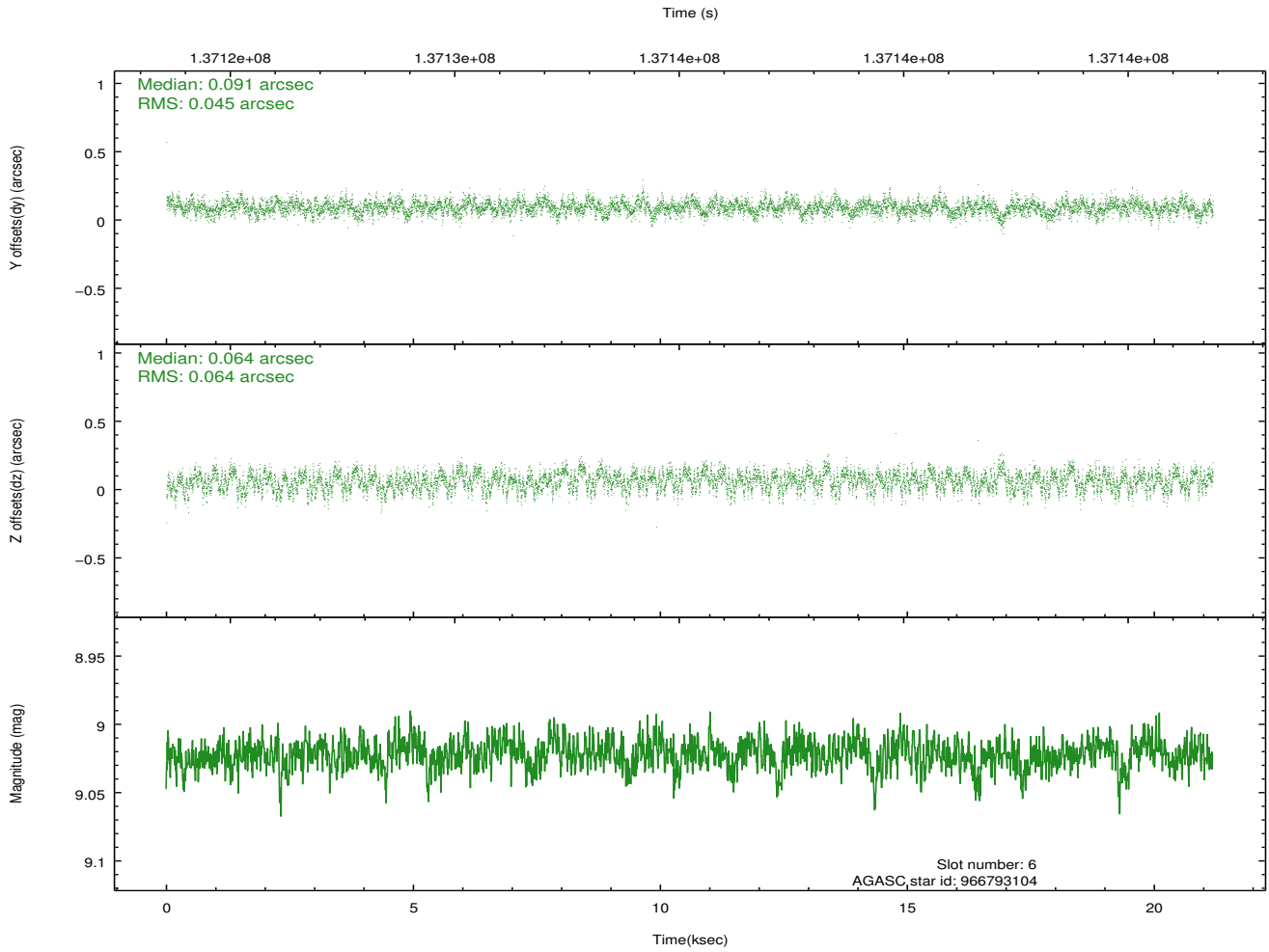
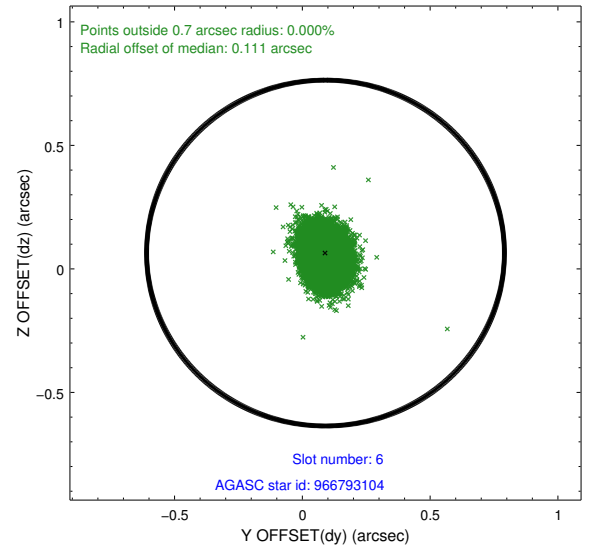
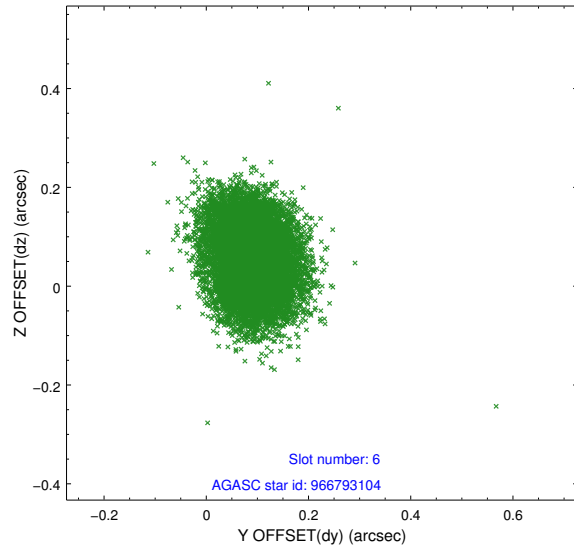
2.4.2 Slot 4



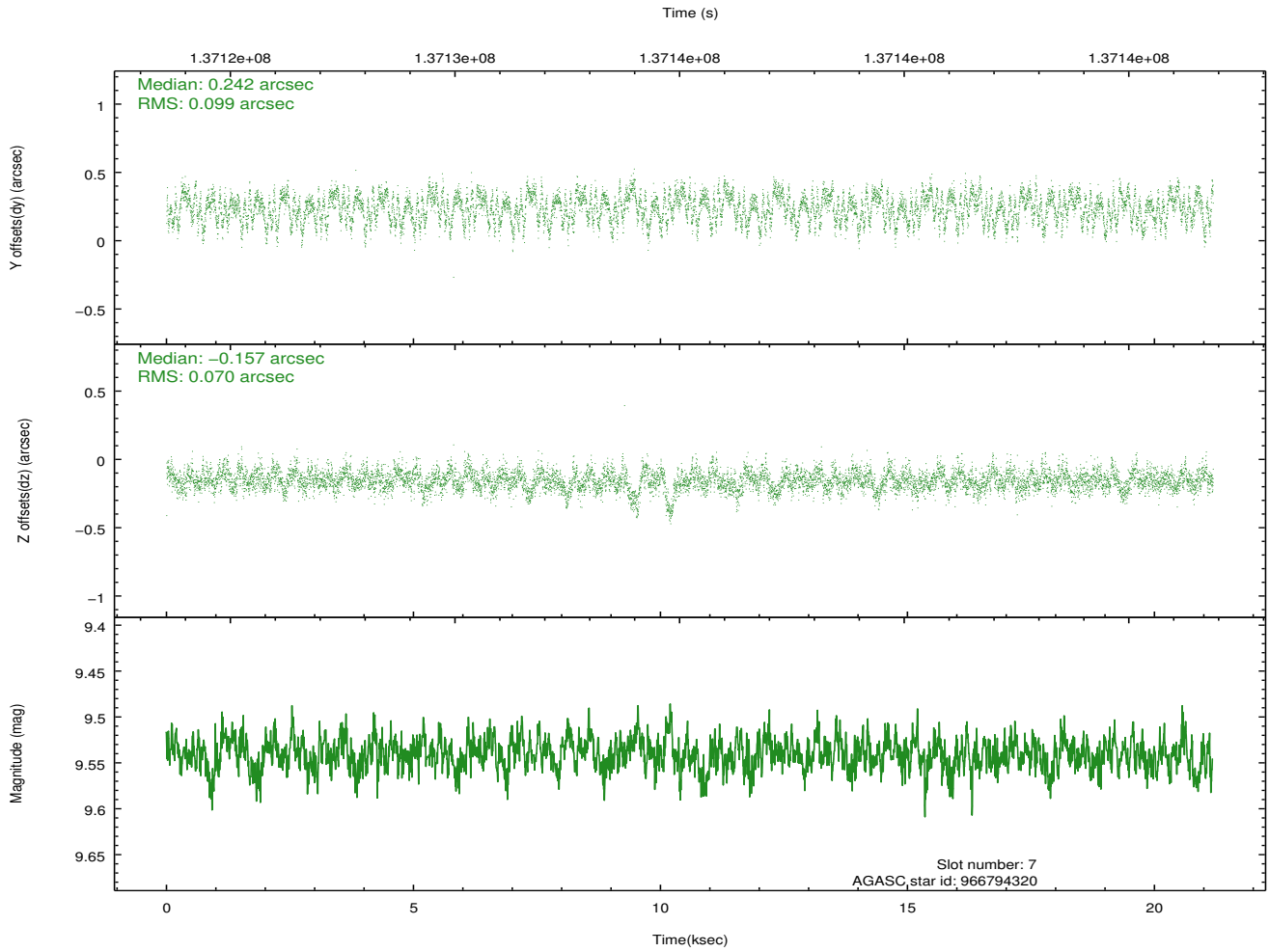
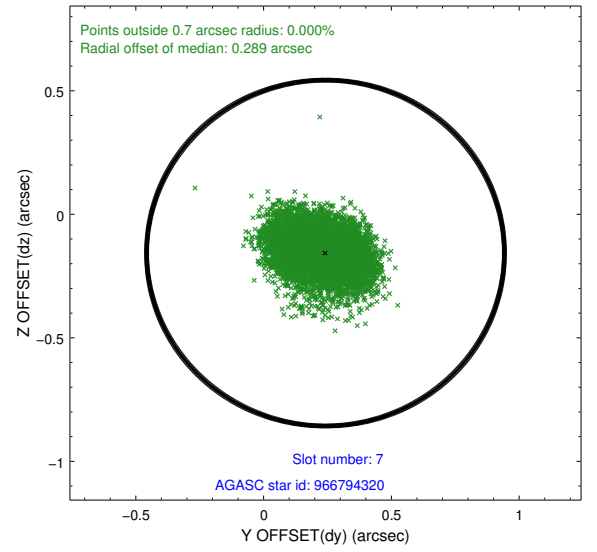
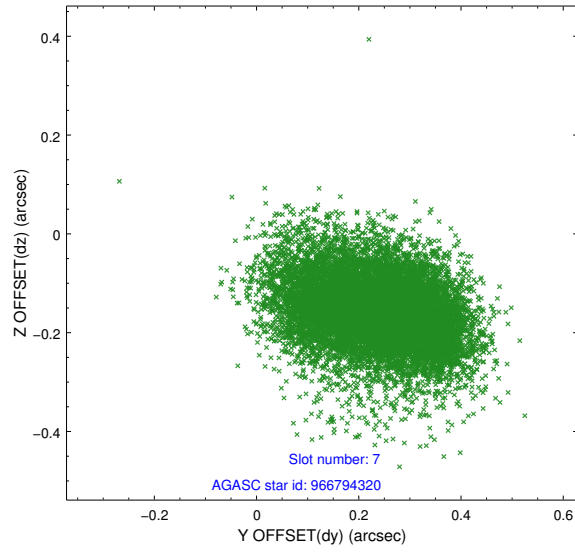
2.4.3 Slot 5



2.4.4 Slot 6

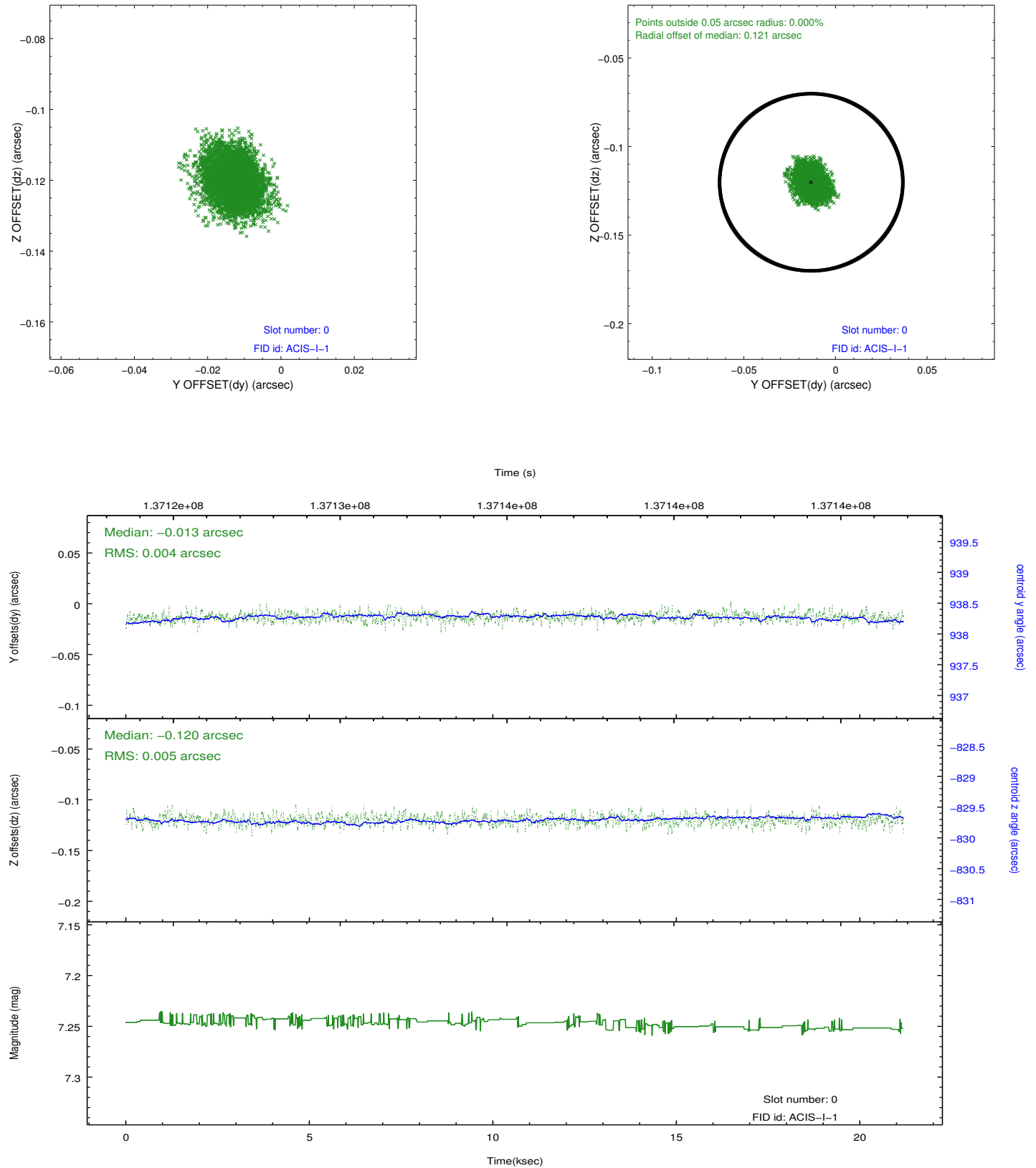


2.4.5 Slot 7

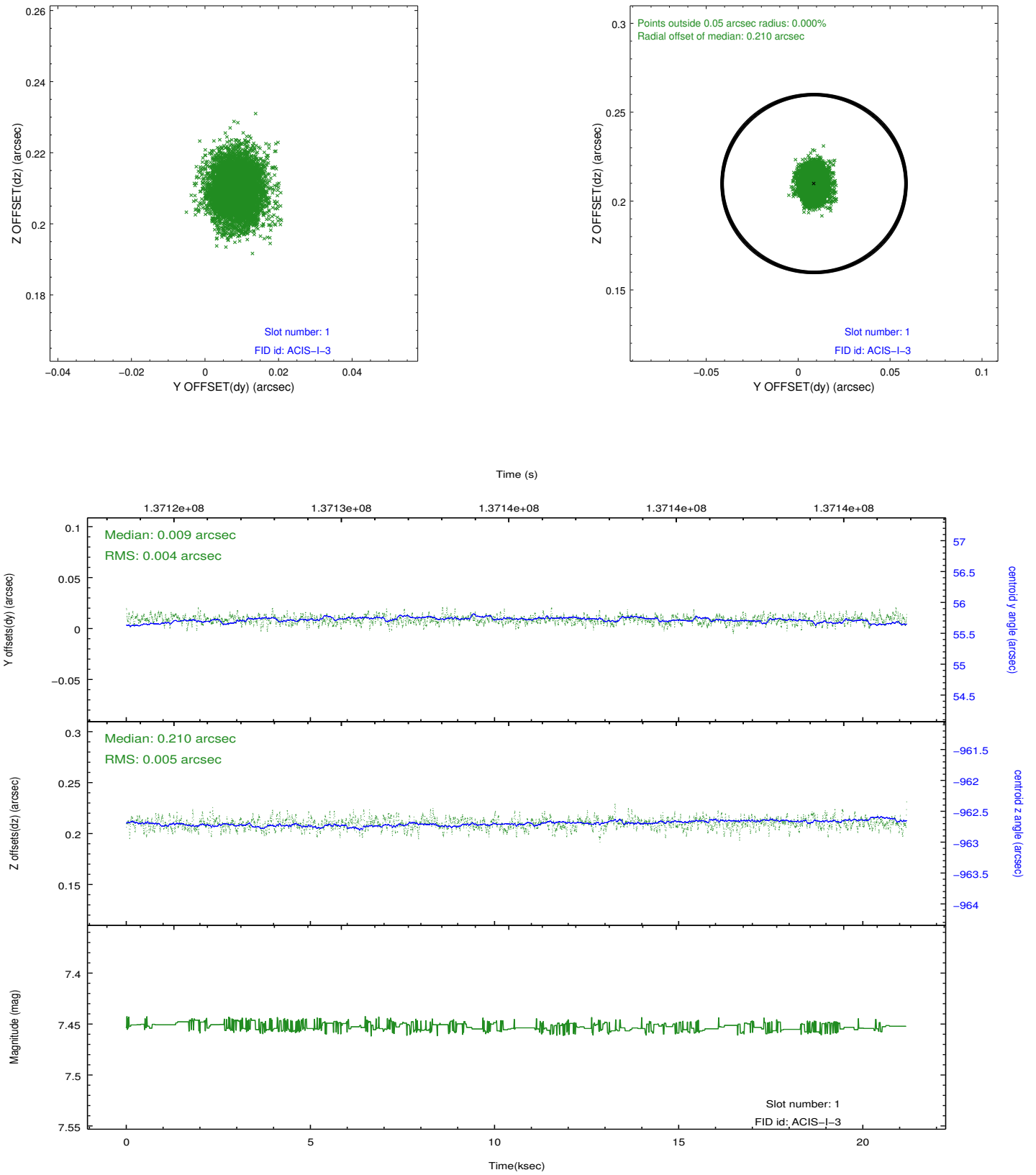


2.5 FID Slots

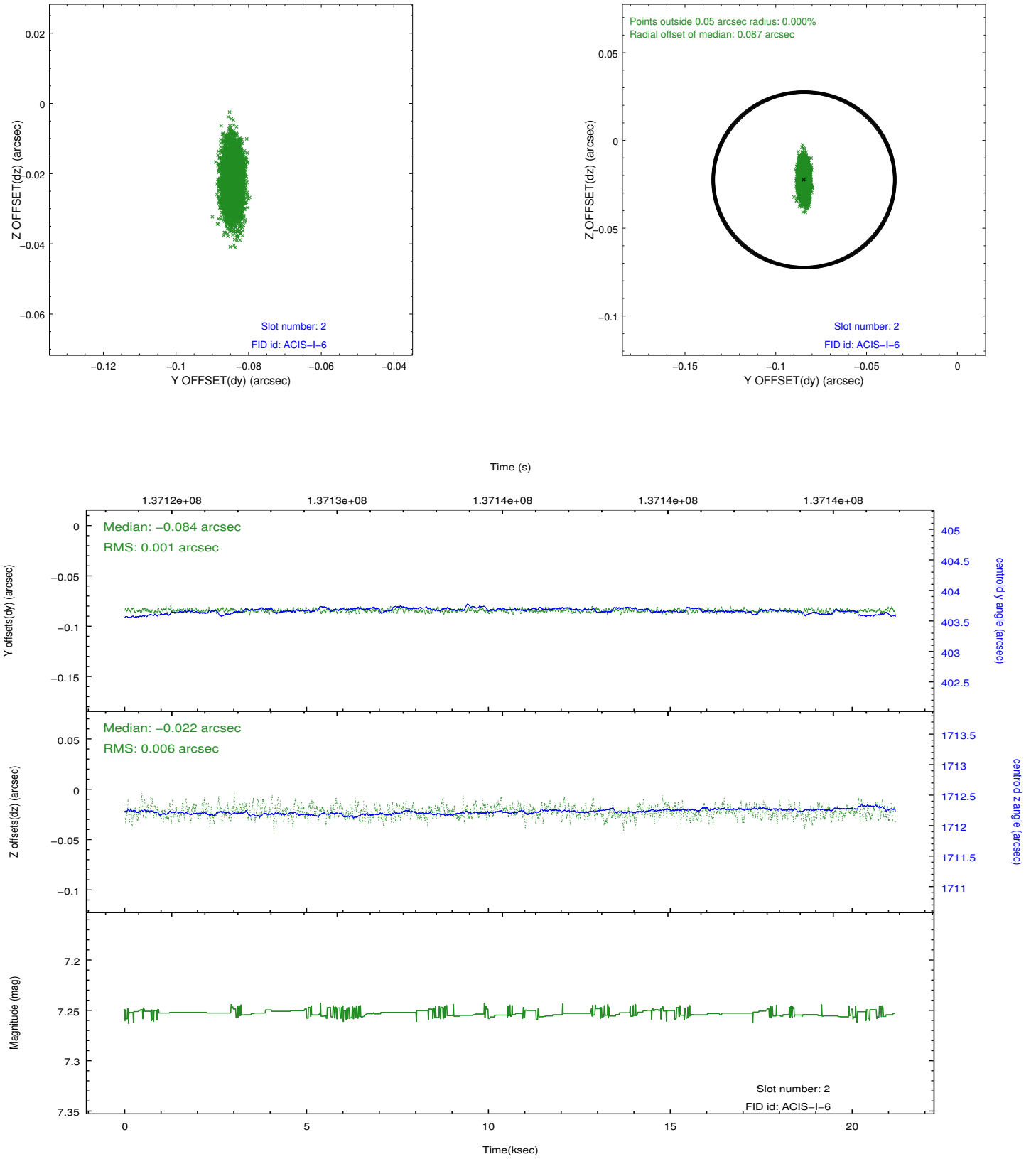
2.5.1 Slot 0



2.5.2 Slot 1



2.5.3 Slot 2



A Summary

A.1 Status

V&V Scientist	Beth Sundheim
V&V Date (YYYY-MM-DD)	2012.10.15
V&V Edition	1
V&V Disposition and Status	OK
V&V Charge Time	20.988

A.2 Comments