

V&V Reference Report

L2 ASCDS Version : 7.6.8.1

Observation 2577 - L2 Version 001
Chandra X-Ray Center

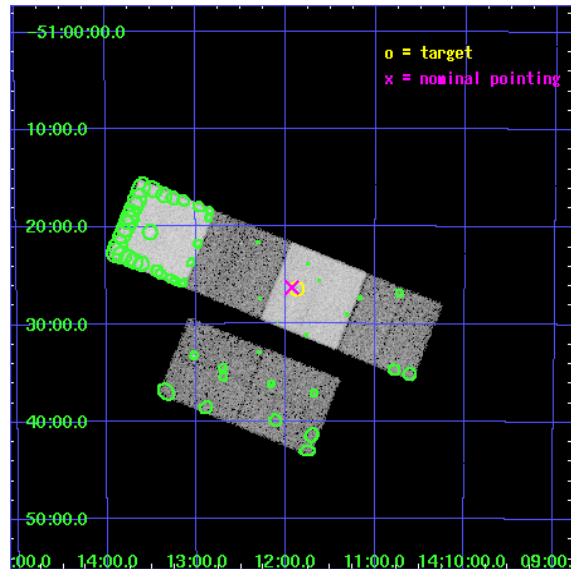
L2 Processing Date : Sep 9 2006

Contents

1	Front	2
2	OBI	3
2.1	OBI	3
2.1.1	Images	3
2.1.2	Bias	3
2.1.3	Parameters	4
2.1.4	Events	4
2.2	Compared Parameters	5
2.3	Aspect	6
2.4	Star Slots	9
2.4.1	Slot 3	9
2.4.2	Slot 4	10
2.4.3	Slot 5	11
2.4.4	Slot 6	12
2.4.5	Slot 7	13
2.5	FID Slots	14
2.5.1	Slot 0	14
2.5.2	Slot 1	15
2.5.3	Slot 2	16
3	Point Sources	17
A	Summary	18
A.1	Status	18
A.2	Comments	18

1 Front

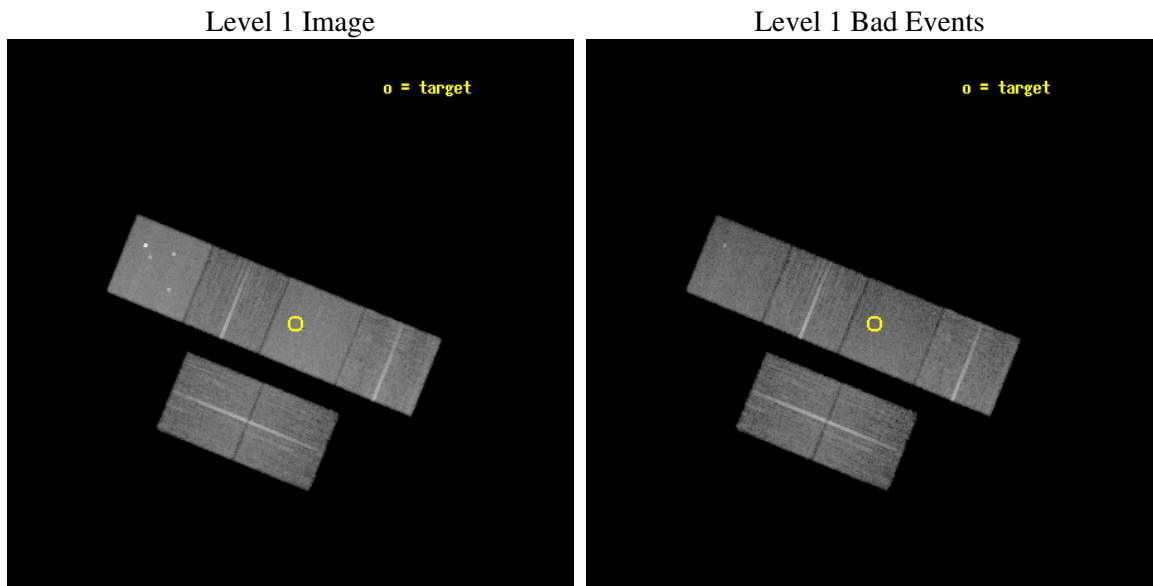
seq_num	200185
obs_id	2577
title	INVESTIGATING COLLIDING WINDS AND MAGNETISED STARS IN YOUNG PLANETARY NEBULAE IMAGED WITH HST
observer	Dr. Raghvendra Sahai
object	HEN2-104
dtcycle	0
cycle	P
ra_targ	212.9675
dec_targ	-51.44
ra_nom	212.98275065552
dec_nom	-51.437991186324
roll_nom	22.009065776311
revision	2
ontime	19958.399925649
livetime	19705.674648285
ontime2	19958.399925649
ontime3	19958.399925649
ontime5	19958.399925649
ontime6	19958.399925649
ontime7	19958.399925649
ontime8	19958.399925649
l2events	195722



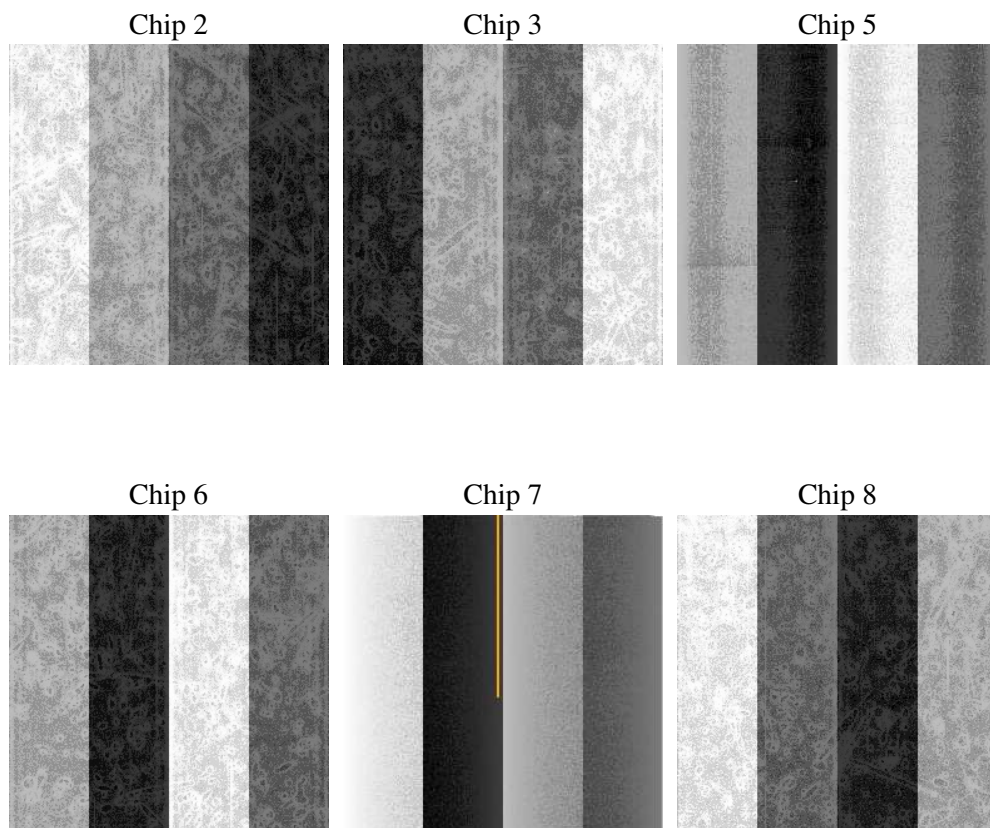
2 OBI

2.1 OBI

2.1.1 Images



2.1.2 Bias



2.1.3 Parameters

obi_num	1
ascdsver	7.6.8.1
caldsver	3.2.3
date	2006-09-09T16:45:02
revision	2

sched_exp_time	20000.000000
ontime	19964.591491133
ontime2	19964.591491133
ontime3	19964.591491133
ontime5	19964.591491133
ontime6	19964.591491133
ontime7	19964.591491133
ontime8	19964.591491133
l1events	926541

2.1.4 Events

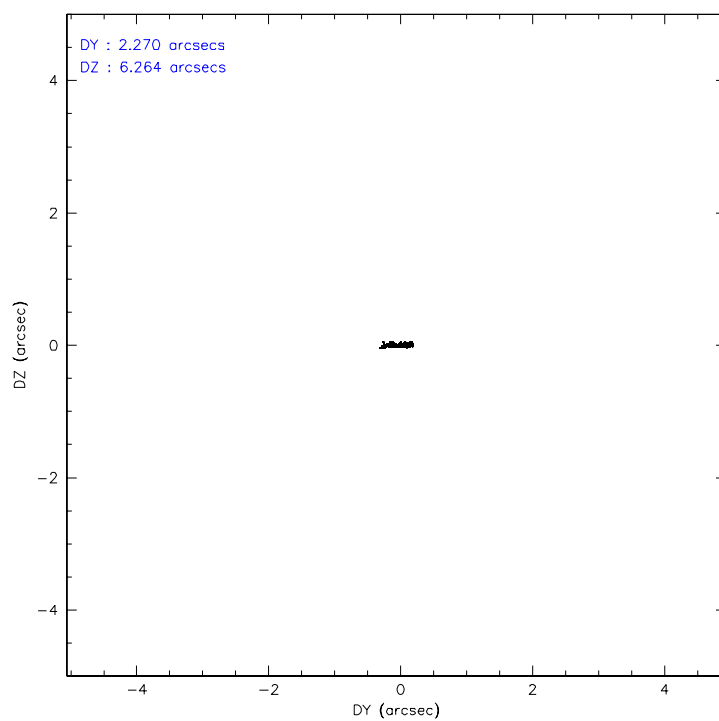
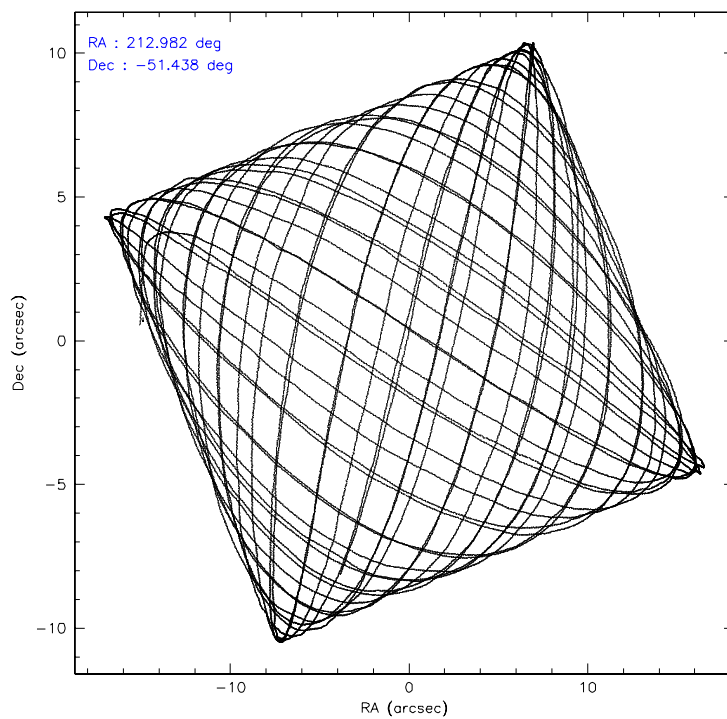
	ccd 2	ccd 3	ccd 5	ccd 6	ccd 7	ccd 8
level 1 events	134951	127353	193088	136459	170892	163798
rejected events	119826	112600	104818	121163	105787	131707
rejected %	88%	88%	54%	88%	61%	80%

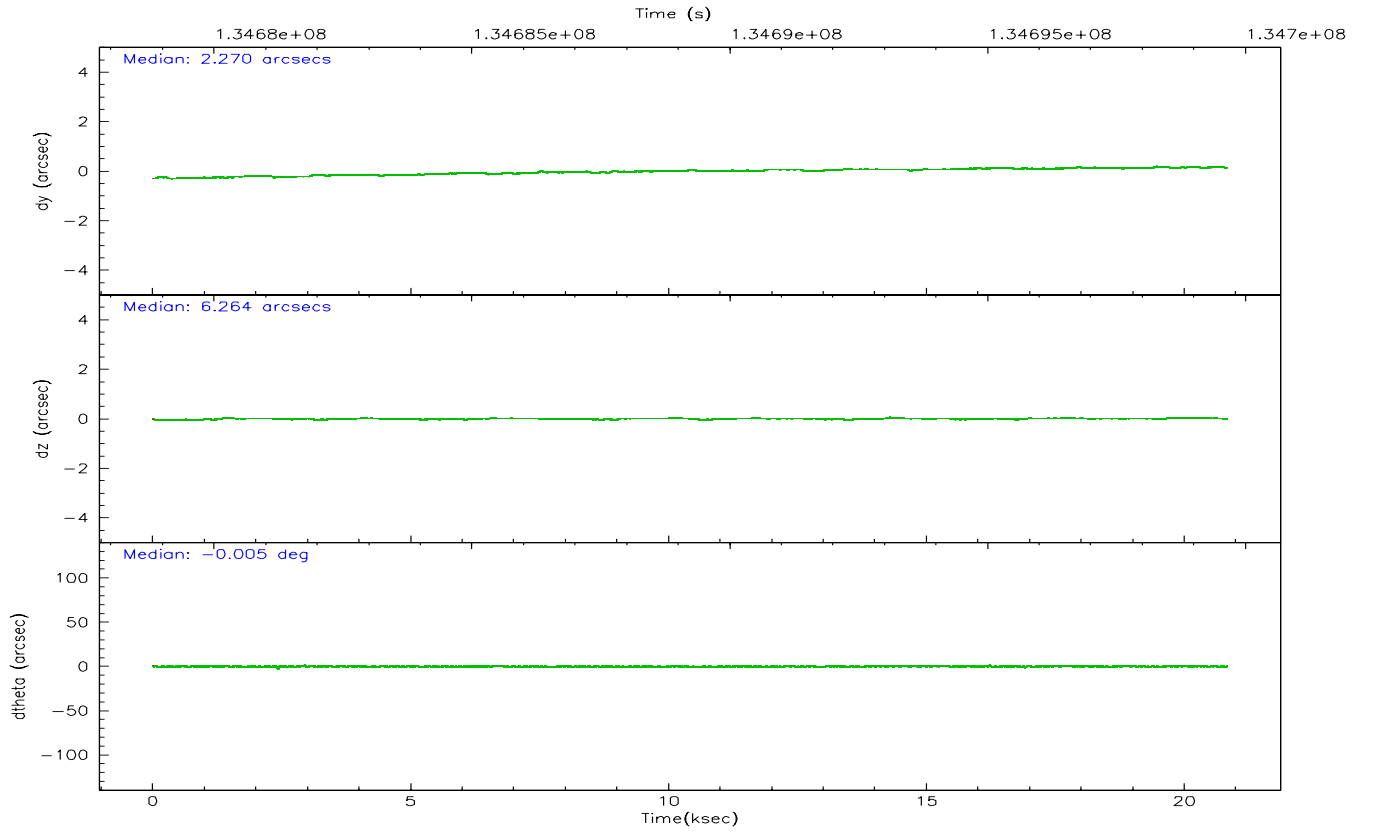
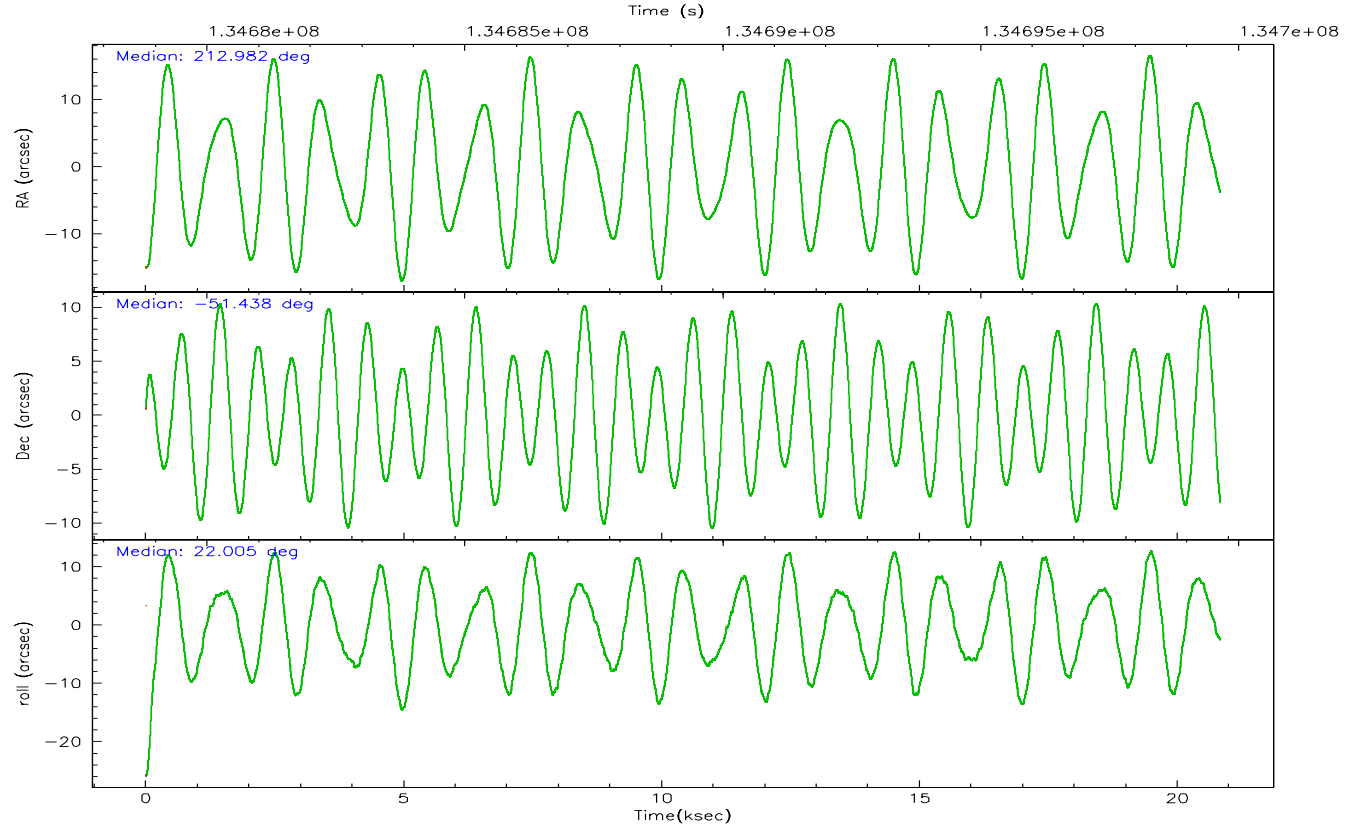
	ccd 2	ccd 3	ccd 5	ccd 6	ccd 7	ccd 8
grade 0 events	6396	6243	7358	6149	3882	10163
	4%	4%	3%	4%	2%	6%
grade 1 events	54	73	488	52	114	90
	0%	0%	0%	0%	0%	0%
grade 2 events	3338	2984	30207	3129	15883	6968
	2%	2%	15%	2%	9%	4%
grade 3 events	1377	1427	2111	1531	3569	3369
	1%	1%	1%	1%	2%	2%
grade 4 events	1404	1457	1938	1466	3316	3168
	1%	1%	1%	1%	1%	1%
grade 5 events	4884	5179	9334	5751	11743	7315
	3%	4%	4%	4%	6%	4%
grade 6 events	2620	2647	46684	3037	38479	8429
	1%	2%	24%	2%	22%	5%
grade 7 events	114878	107343	94968	115344	93906	124296
	85%	84%	49%	84%	54%	75%

2.2 Compared Parameters

Parameter	Planned	Actual	Parameter	Planned	Actual
Instrument	ACIS	ACIS	Obspar format version number	6	6
Detector	ACIS-235678	ACIS-235678	Obspar file type	PREDICTED	ACTUAL
Grating	NONE	NONE	Obspar update status	NONE	UPDATED
Data mode	FAINT	FAINT	On-chip summing requested	N	N
Observation mode	POINTING	POINTING	Subarray requested	NONE	NONE
Pointing RA	212.956243	212.9827506555197	Alternating exposures requested	N	N
Pointing Dec	-51.459679	-51.43799118632423	Primary exposure time	0.000000	3.2
Pointing Roll	21.831713	22.00906577631117			
SIM focus pos (mm)	-0.684267	-0.6828225247311905			
SIM defocus (mm)	0	0.001444936568705701			
SIM translation stage pos (mm)	-190.132523	-190.1400660498719			
SIM translation stage offset (mm)	0	0.00754346686406393			
Observation start time	134679651.184000	134678369.51552			
Observation start date	2002-04-08T18:59:47	2002-04-08T18:39:29			
Observation end time	134699651.184000	134700270.17891			
Observation end date	2002-04-09T00:33:07	2002-04-09T00:44:30			
Read mode	TIMED	TIMED			

2.3 Aspect



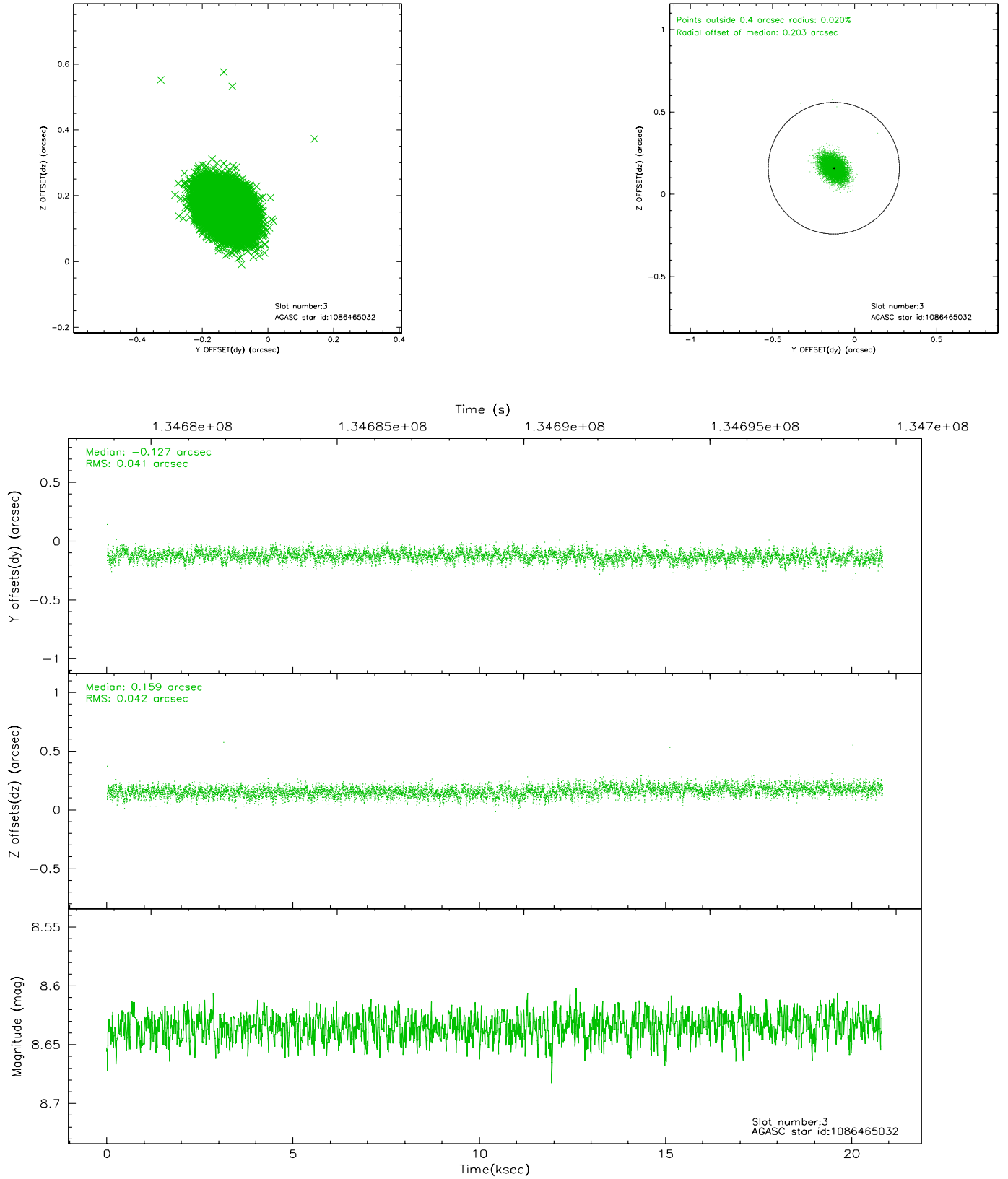


Slot Statistics

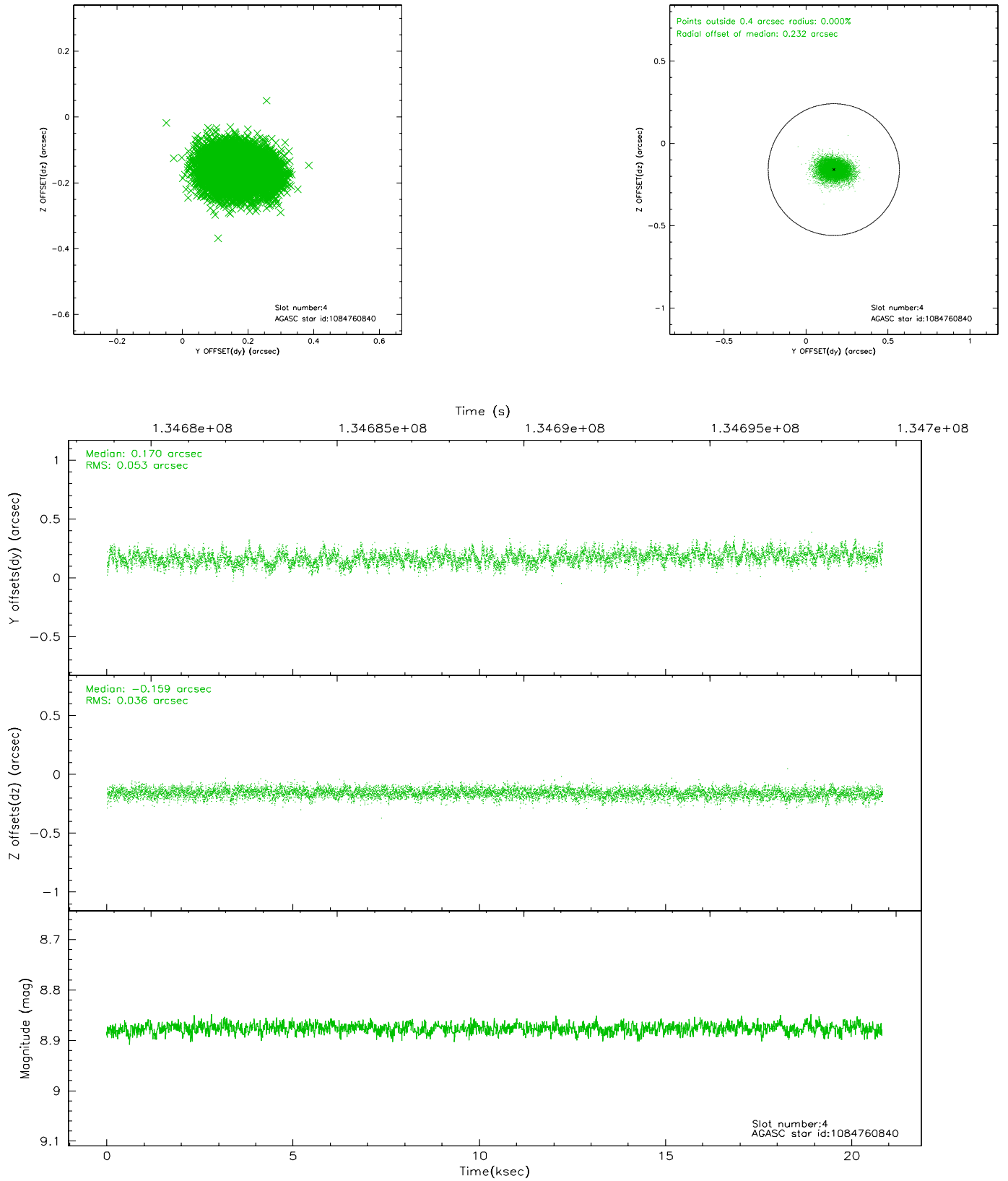
slot	status	id	mag	n_pts	med_dy	med_dz	dr1	dr2	ra	dec	mean_y	mean_z
0	FID	ACIS-S-2	7.11	5080	-0.030	0.028	0.014	0.022	0.000000	0.000000	-754.86	-1727.40
1	FID	ACIS-S-4	7.21	5079	-0.054	0.008	0.021	0.034	0.000000	0.000000	2158.26	180.94
2	FID	ACIS-S-5	7.24	5079	0.057	-0.027	0.011	0.018	0.000000	0.000000	-1807.43	174.70
3	GUIDE	1086465032	8.63	10158	-0.127	0.159	0.062	0.101	213.783857	-51.862056	1166.13	-2038.88
4	GUIDE	1084760840	8.88	10156	0.170	-0.159	0.067	0.114	212.056401	-51.580948	-2034.66	330.80
5	GUIDE	1084760192	8.56	10153	-0.117	-0.156	0.056	0.089	213.454351	-50.894751	1805.02	1463.20
6	GUIDE	1084753736	9.08	10157	0.096	0.184	0.093	0.148	212.745733	-52.231823	-1463.80	-2408.72
7	GUIDE	1084758736	9.21	10149	-0.021	-0.029	0.085	0.139	213.617446	-50.698758	2416.17	1975.33

2.4 Star Slots

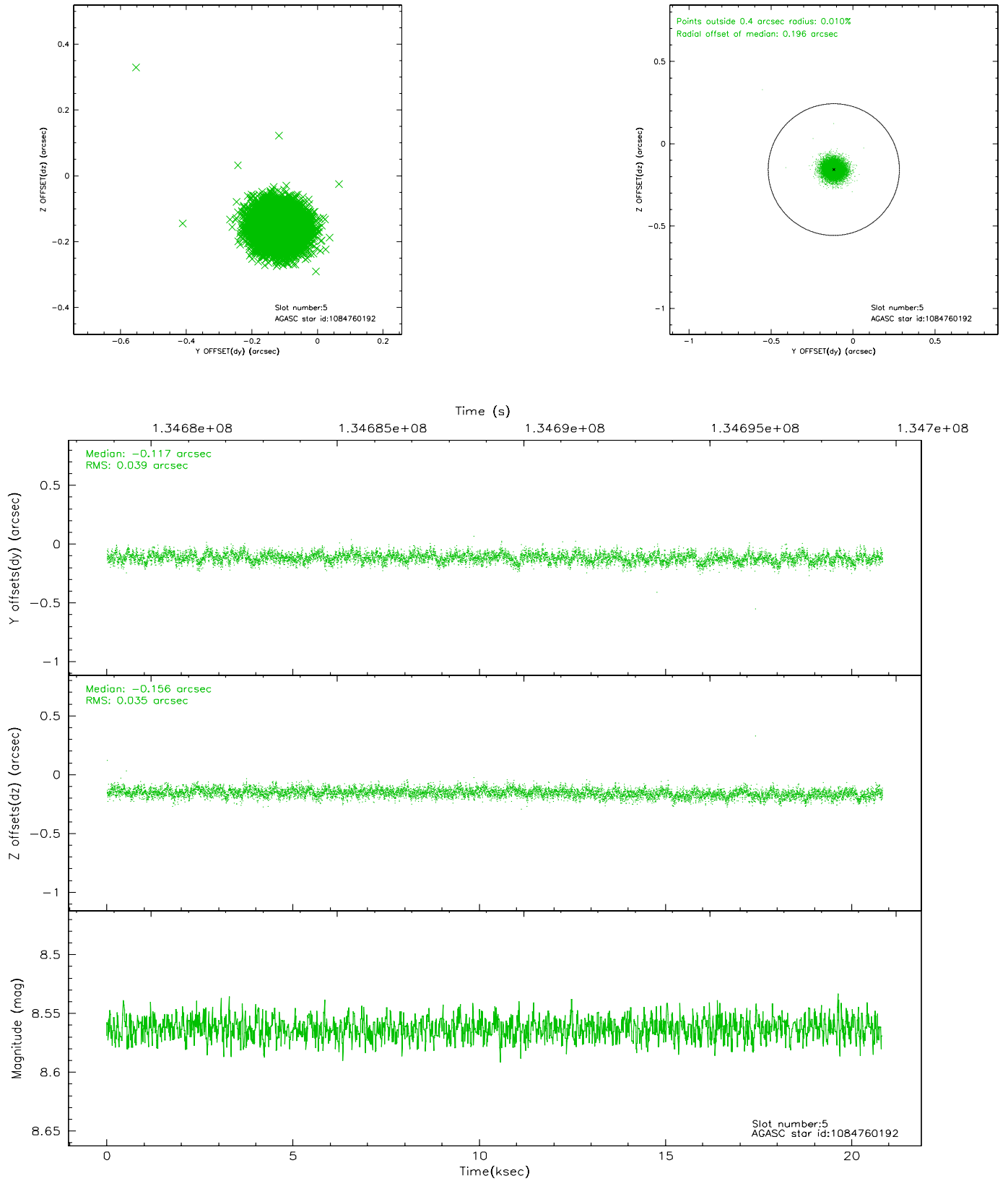
2.4.1 Slot 3



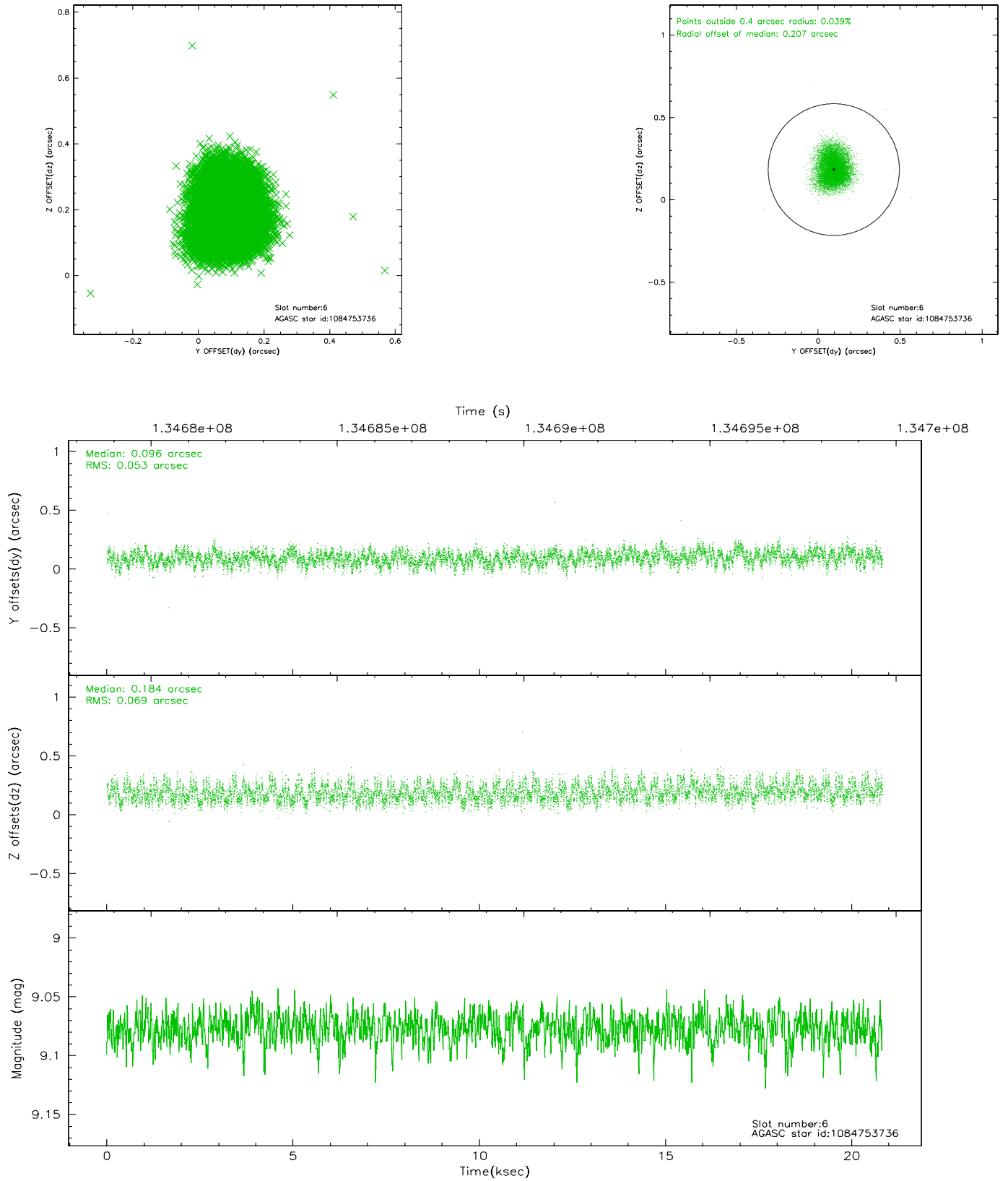
2.4.2 Slot 4



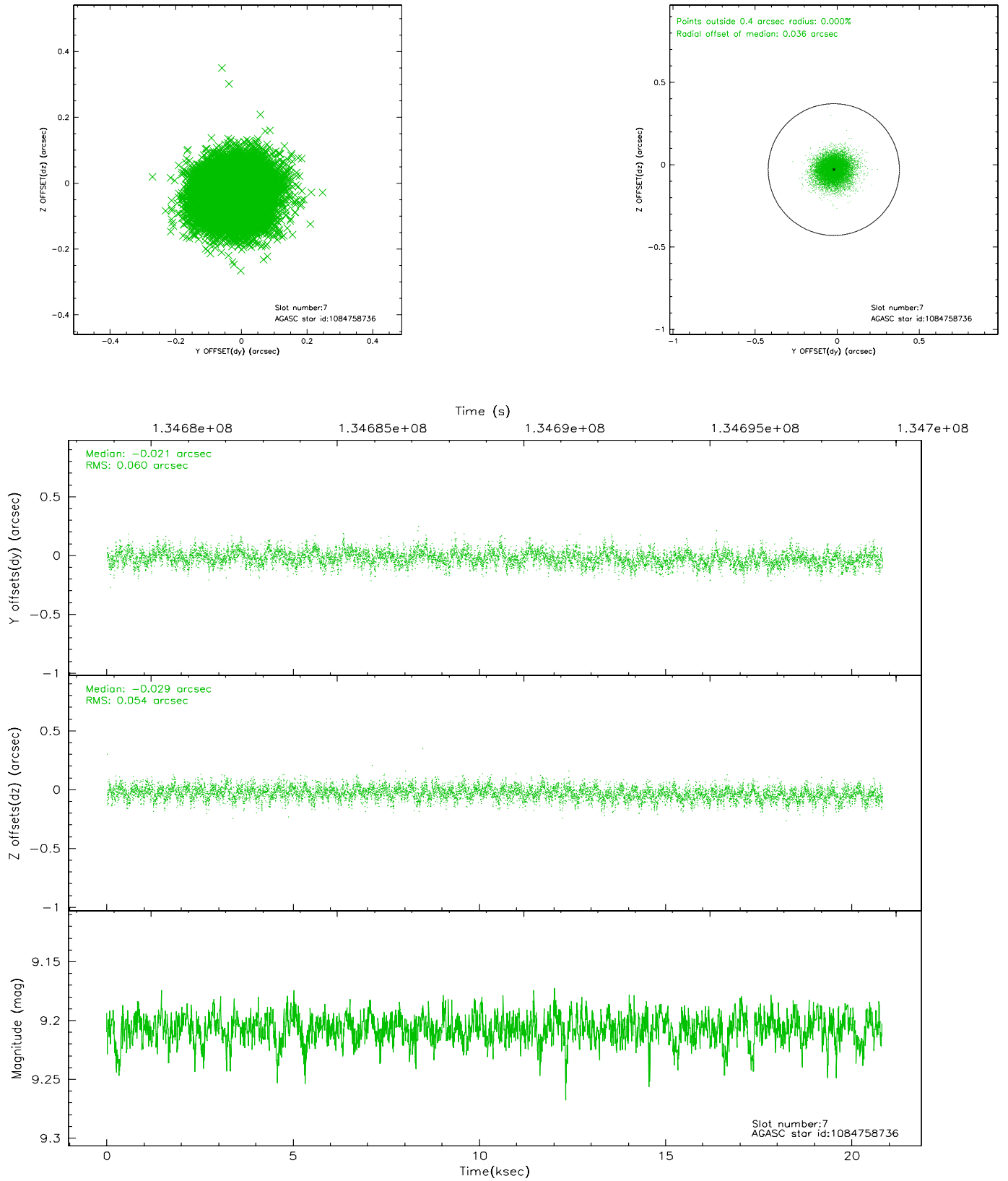
2.4.3 Slot 5



2.4.4 Slot 6

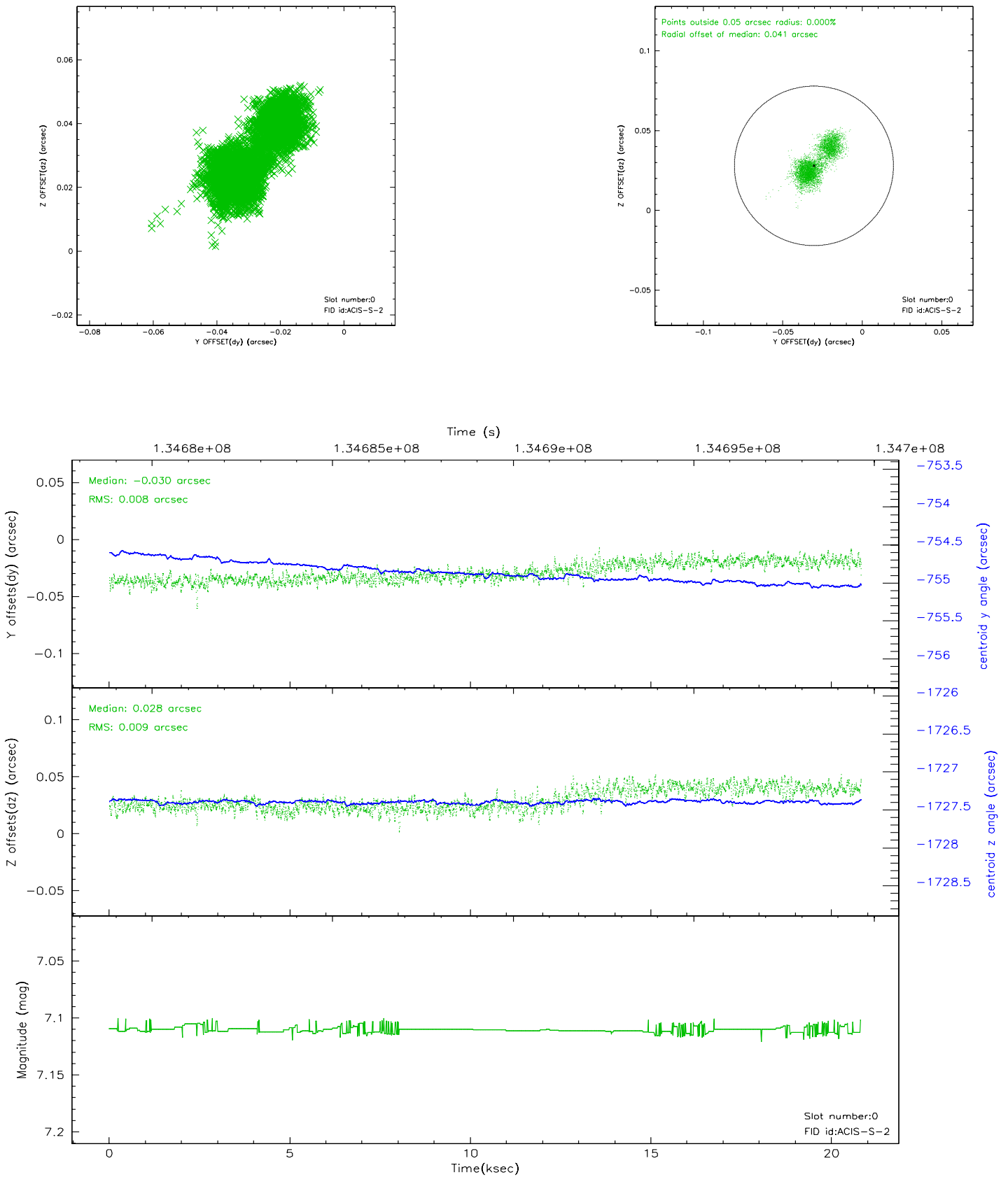


2.4.5 Slot 7

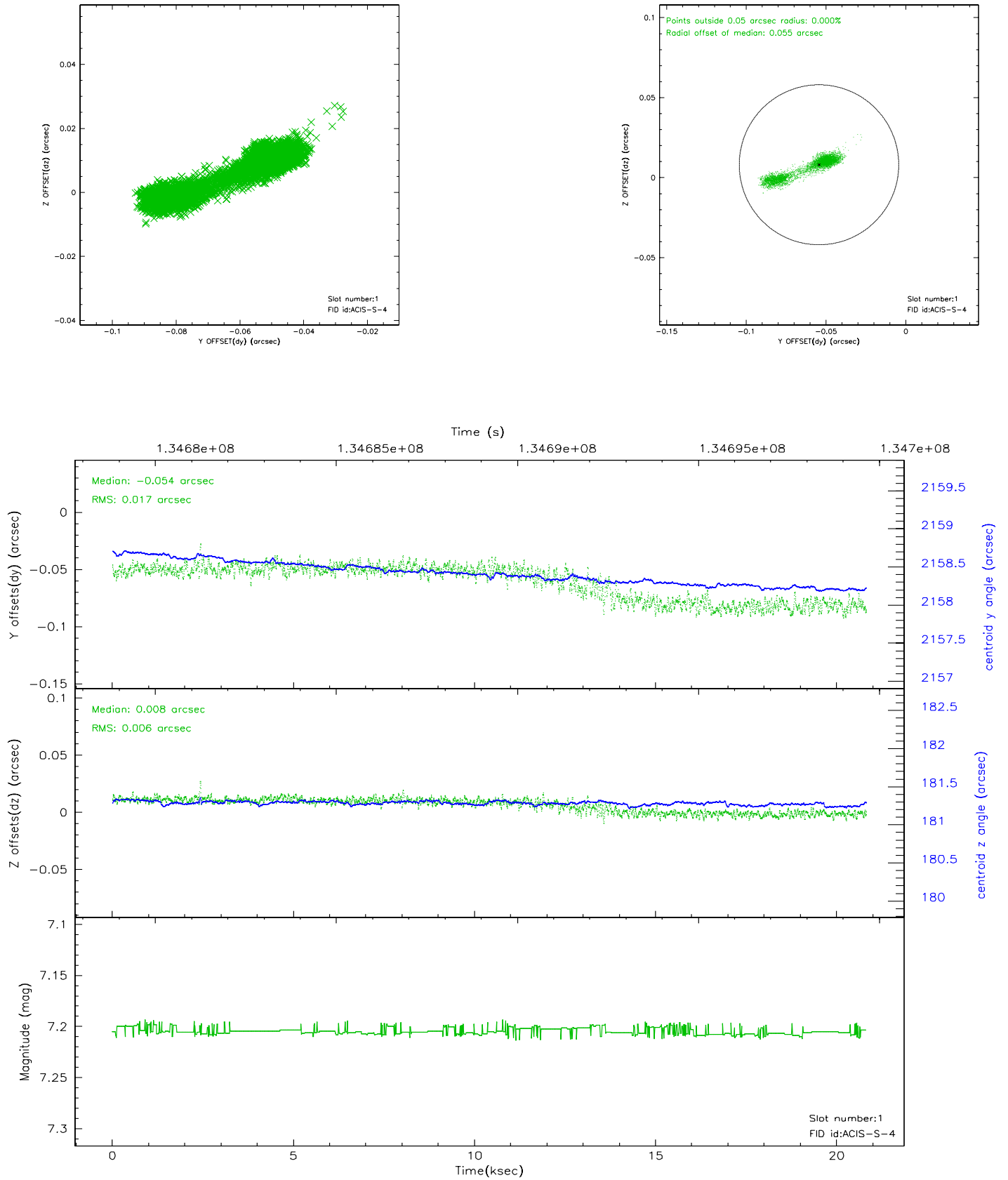


2.5 FID Slots

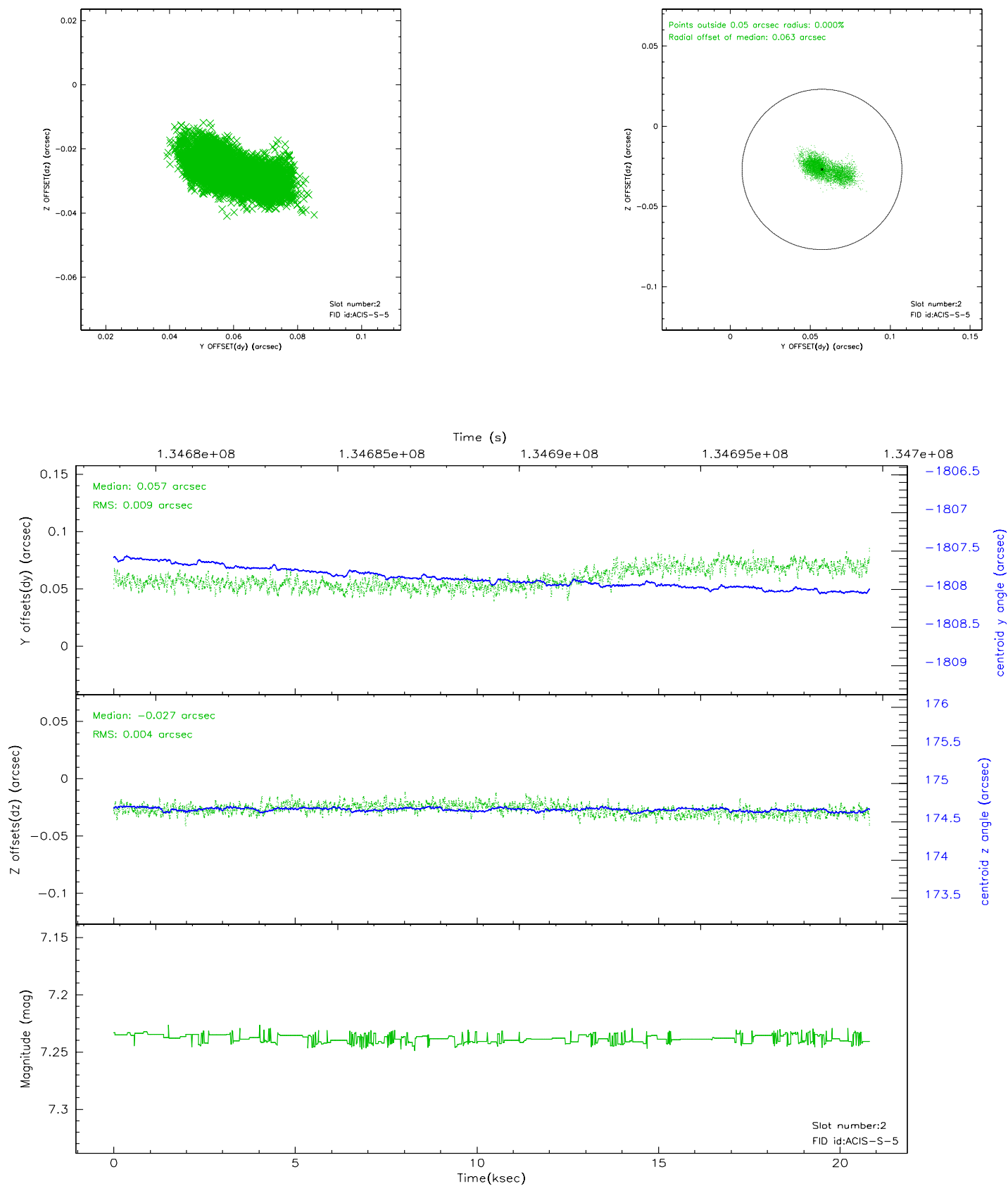
2.5.1 Slot 0



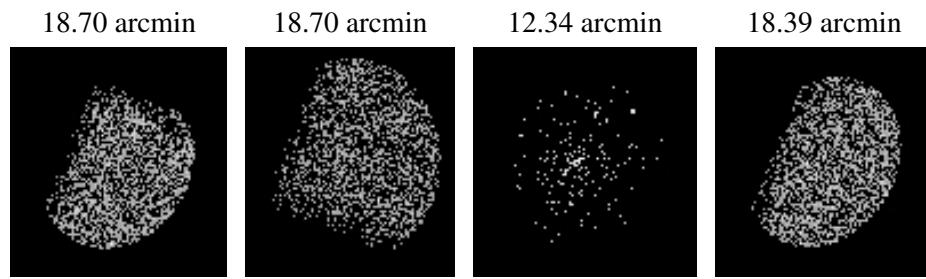
2.5.2 Slot 1



2.5.3 Slot 2



3 Point Sources



A Summary

A.1 Status

V&V Scientist	Jen Lauer
V&V Date (YYYY-MM-DD)	2006.09.10
V&V Edition	1
V&V Disposition and Status	OK
V&V Charge Time	19.961

A.2 Comments