

# V&V Reference Report

## L2 ASCDS Version : 7.6.9

Observation 2537 - L2 Version 001  
Chandra X-Ray Center

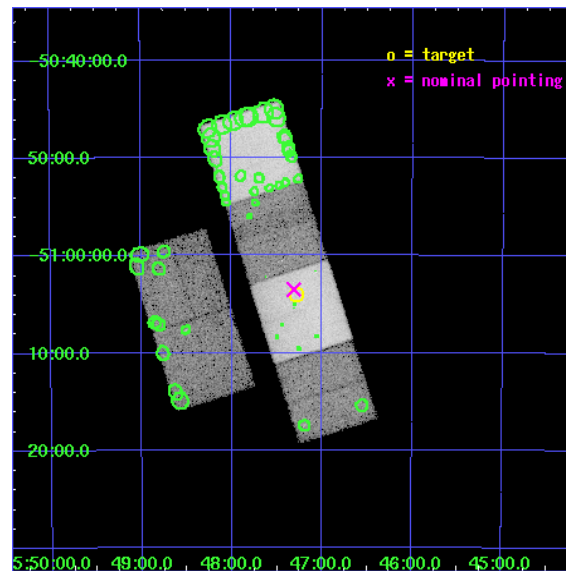
L2 Processing Date : Oct 5 2006

## Contents

<b>1</b>	<b>Front</b>	<b>2</b>
<b>2</b>	<b>OBI</b>	<b>3</b>
2.1	OBI . . . . .	3
2.1.1	Images . . . . .	3
2.1.2	Bias . . . . .	3
2.1.3	Parameters . . . . .	4
2.1.4	Events . . . . .	4
2.2	Compared Parameters . . . . .	5
2.3	Aspect . . . . .	6
2.4	Star Slots . . . . .	9
2.4.1	Slot 3 . . . . .	9
2.4.2	Slot 4 . . . . .	10
2.4.3	Slot 5 . . . . .	11
2.4.4	Slot 6 . . . . .	12
2.4.5	Slot 7 . . . . .	13
2.5	FID Slots . . . . .	14
2.5.1	Slot 0 . . . . .	14
2.5.2	Slot 1 . . . . .	15
2.5.3	Slot 2 . . . . .	16
<b>3</b>	<b>Point Sources</b>	<b>17</b>
<b>A</b>	<b>Summary</b>	<b>18</b>
A.1	Status . . . . .	18
A.2	Comments . . . . .	18

# 1 Front

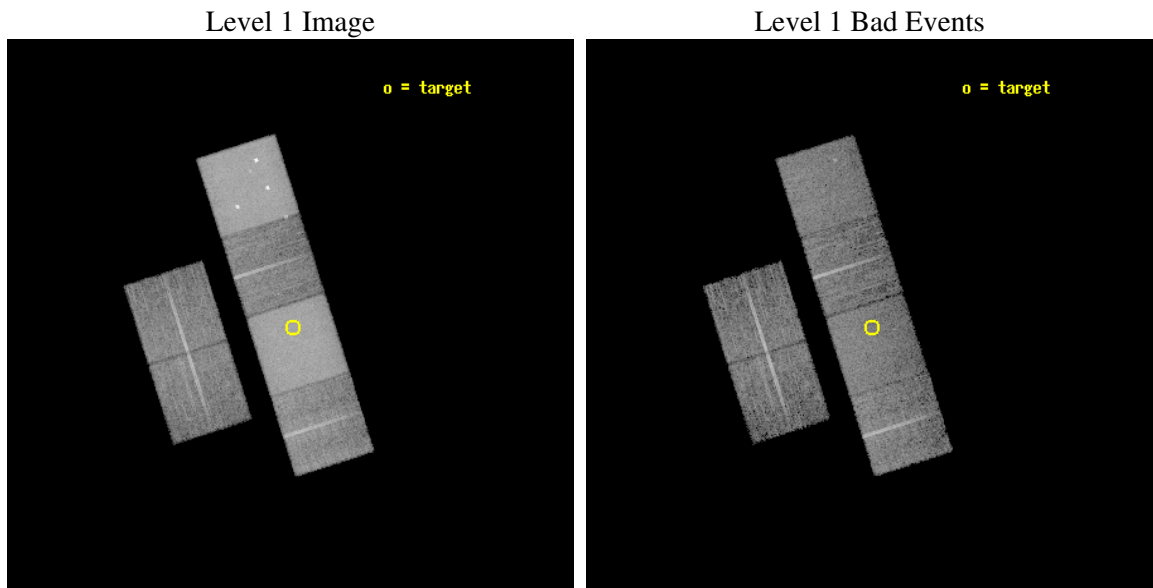
seq_num	200145
obs_id	2537
title	AN X-RAY STUDY OF X-RAYS FROM THE BETA PIC SYSTEM
observer	Professor Gordon Garmire
object	BETA PIC
dtcycle	0
cycle	P
ra_targ	86.820833
dec_targ	-51.0665
ra_nom	86.827780245408
dec_nom	-51.058478714124
roll_nom	72.362429099987
revision	2
ontime	10015.999962687
livetime	9889.1713402488
ontime2	10015.999962687
ontime3	10015.999962687
ontime5	10015.999962687
ontime6	10015.999962687
ontime7	10015.999962687
ontime8	10012.759002417
l2events	279824



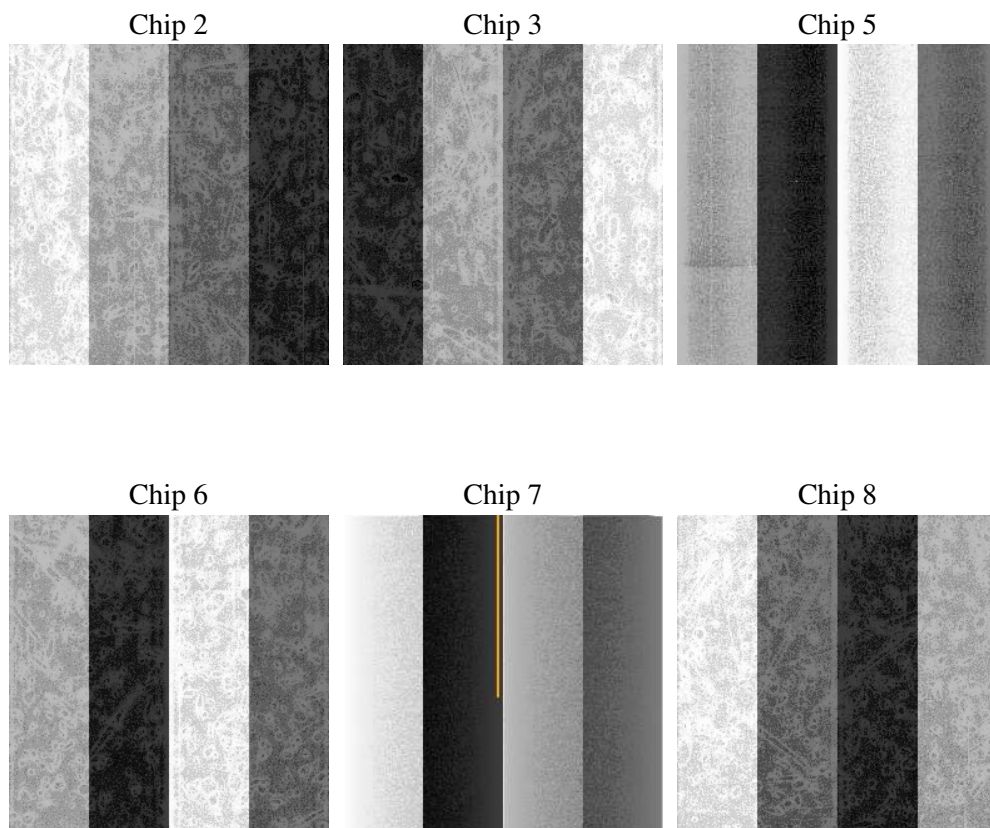
## 2 OBI

### 2.1 OBI

#### 2.1.1 Images



#### 2.1.2 Bias



### 2.1.3 Parameters

obi_num	0
ascdsver	7.6.9
caldbver	3.2.3
date	2006-10-05T23:48:15
revision	2

sched_exp_time	10259.613000
ontime	10021.174824983
ontime2	10021.174824983
ontime3	10024.415845096
ontime5	10021.174824983
ontime6	10024.415845096
ontime7	10021.174824983
ontime8	10021.174785167
l1events	676032

### 2.1.4 Events

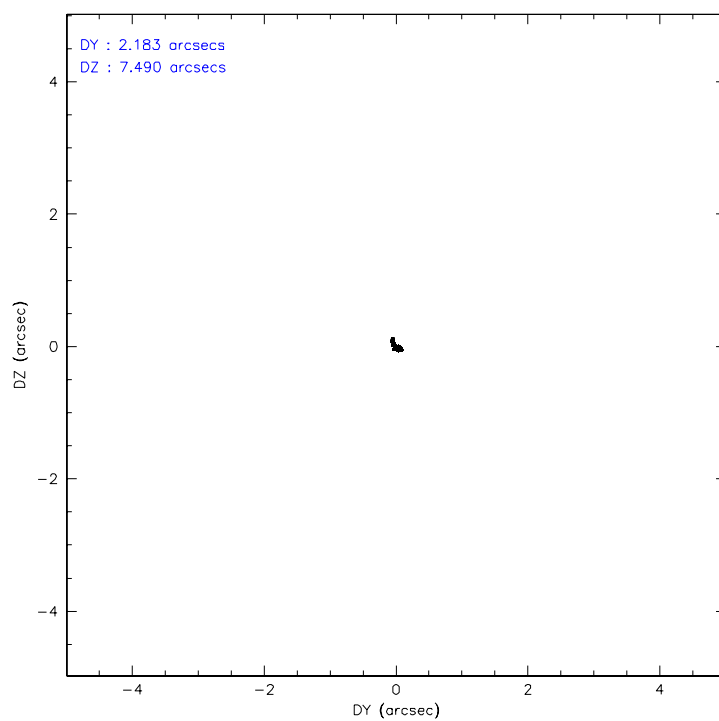
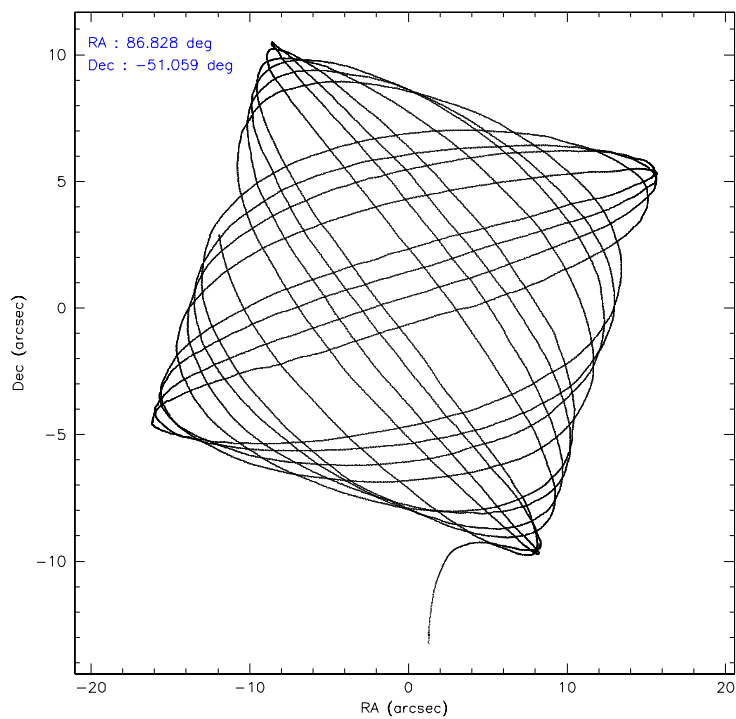
	ccd 2	ccd 3	ccd 5	ccd 6	ccd 7	ccd 8
level 1 events	77287	74377	181576	78648	166247	97897
rejected events	60869	57979	64418	58017	62199	68680
rejected %	78%	77%	35%	73%	37%	70%

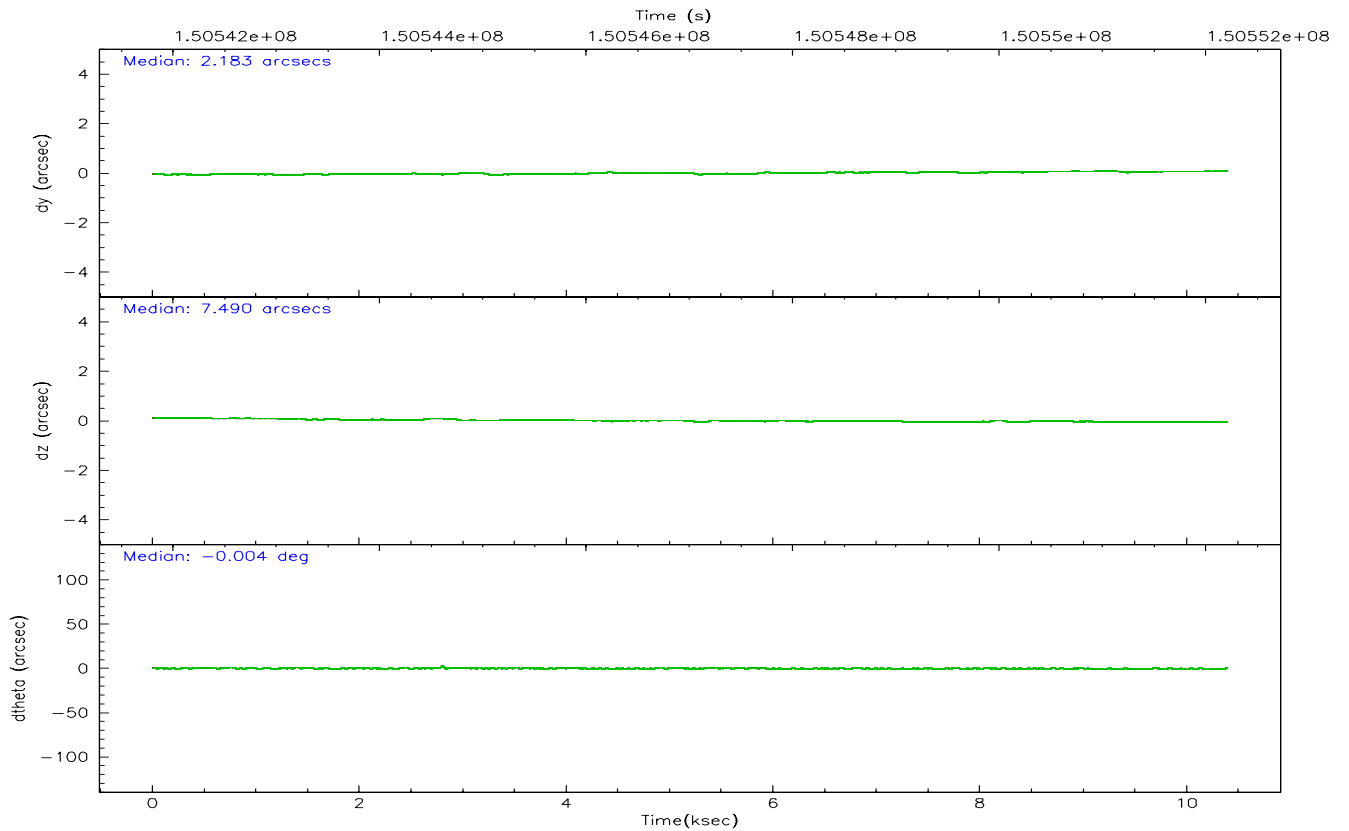
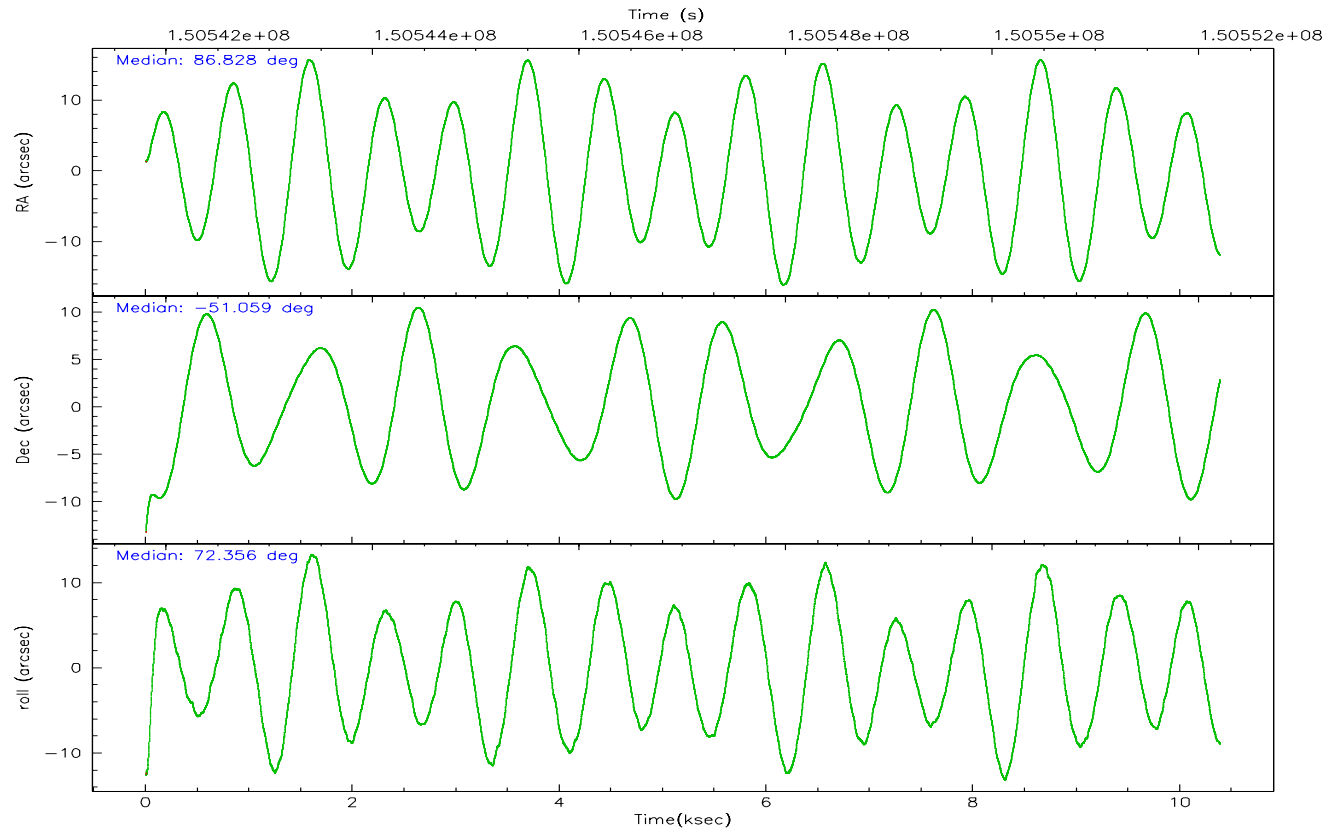
	ccd 2	ccd 3	ccd 5	ccd 6	ccd 7	ccd 8
grade 0 events	10541	10447	15793	13620	9274	15678
	13%	14%	8%	17%	5%	16%
grade 1 events	85	73	301	59	53	128
	0%	0%	0%	0%	0%	0%
grade 2 events	2362	2256	36521	3015	22154	4778
	3%	3%	20%	3%	13%	4%
grade 3 events	985	1061	3689	1059	5930	2073
	1%	1%	2%	1%	3%	2%
grade 4 events	979	1042	3753	1031	5657	1897
	1%	1%	2%	1%	3%	1%
grade 5 events	2505	2818	5475	2851	6210	3813
	3%	3%	3%	3%	3%	3%
grade 6 events	1557	1610	57481	1941	61095	4822
	2%	2%	31%	2%	36%	4%
grade 7 events	58273	55070	58563	55072	55874	64708
	75%	74%	32%	70%	33%	66%

## 2.2 Compared Parameters

Parameter	Planned	Actual	Parameter	Planned	Actual
Instrument	ACIS	ACIS	Obspar format version number	6	6
Detector	ACIS-235678	ACIS-235678	Obspar file type	PREDICTED	ACTUAL
Grating	NONE	NONE	Obspar update status	NONE	UPDATED
Data mode	FAINT	FAINT	Number of optional ACIS chips dropped	0	0
Observation mode	POINTING	POINTING	On-chip summing requested	N	N
Pointing RA	86.837606	86.82778024540805	Subarray requested	NONE	NONE
Pointing Dec	-51.084924	-51.05847871412448	Alternating exposures requested	N	N
Pointing Roll	72.213458	72.36242909998668	Primary exposure time	0.000000	3.2
SIM focus pos (mm)	-0.684267	-0.6828225247311905			
SIM defocus (mm)	0	0.001444936568705701			
SIM translation stage pos (mm)	-190.132523	-190.1400660498719			
SIM translation stage offset (mm)	0	0.00754346686406393			
Observation start time	150541942.184000	150540480.91644			
Observation start date	2002-10-09T09:11:18	2002-10-09T08:48:00			
Observation end time	150552202.184000	150552516.46694			
Observation end date	2002-10-09T12:02:18	2002-10-09T12:08:36			
Read mode	TIMED	TIMED			

## 2.3 Aspect





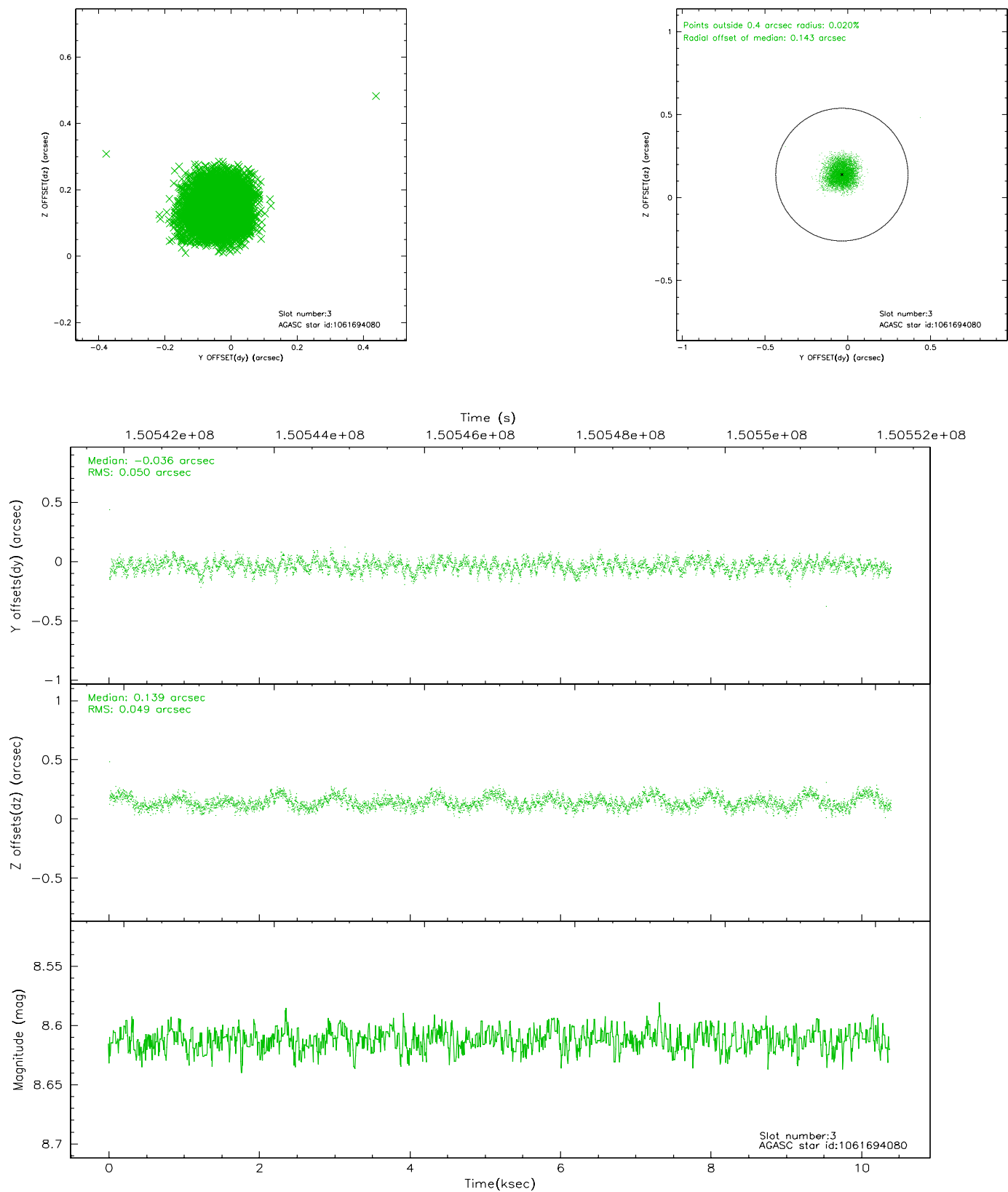
### Slot Statistics

slot	status	id	mag	n_pts	med_dy	med_dz	dr1	dr2	ra	dec	mean_y	mean_z
0	FID	ACIS-S-2	7.11	2534	-0.005	0.031	0.007	0.012	0.000000	0.000000	-754.83	-1728.64
1	FID	ACIS-S-4	7.20	2534	-0.079	-0.006	0.005	0.009	0.000000	0.000000	2158.17	179.26
2	FID	ACIS-S-5	7.24	2534	0.053	-0.016	0.007	0.011	0.000000	0.000000	-1806.94	173.53
3	GUIDE	1061694080	8.61	5066	-0.036	0.139	0.075	0.117	87.723050	-50.708573	1896.16	-1511.33
4	GUIDE	1061694200	9.05	5065	-0.119	0.038	0.101	0.155	87.744756	-50.641601	2141.62	-1488.08
5	GUIDE	1061687656	9.03	5067	-0.040	0.122	0.100	0.154	87.359157	-51.690185	-1721.75	-1775.30
6	GUIDE	1061557344	9.49	5062	0.163	0.090	0.089	0.144	86.834993	-51.719625	-2176.75	-692.70
7	GUIDE	1061555984	9.62	5060	0.027	-0.391	0.112	0.177	85.711815	-51.072582	-753.95	2432.04

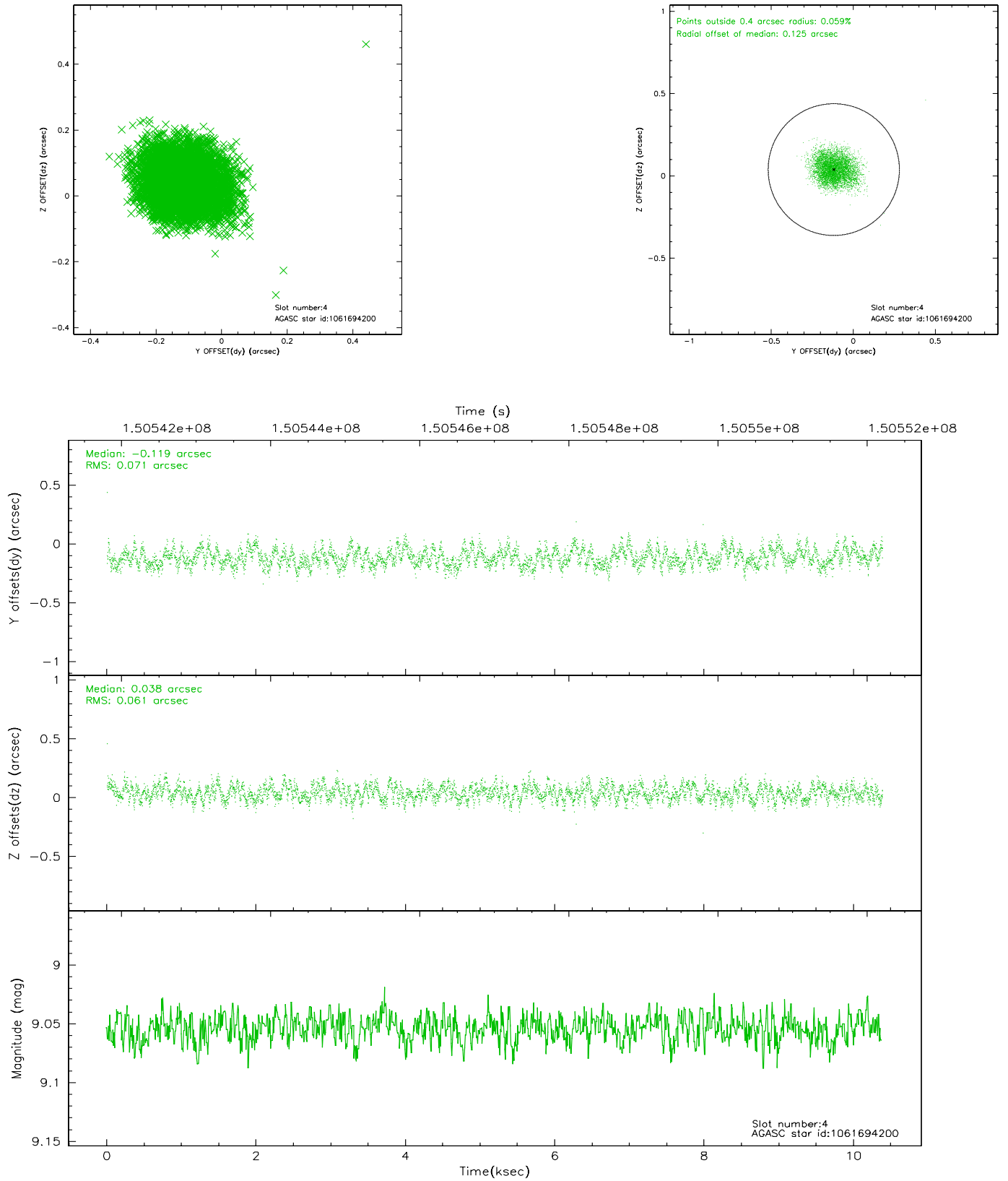


## 2.4 Star Slots

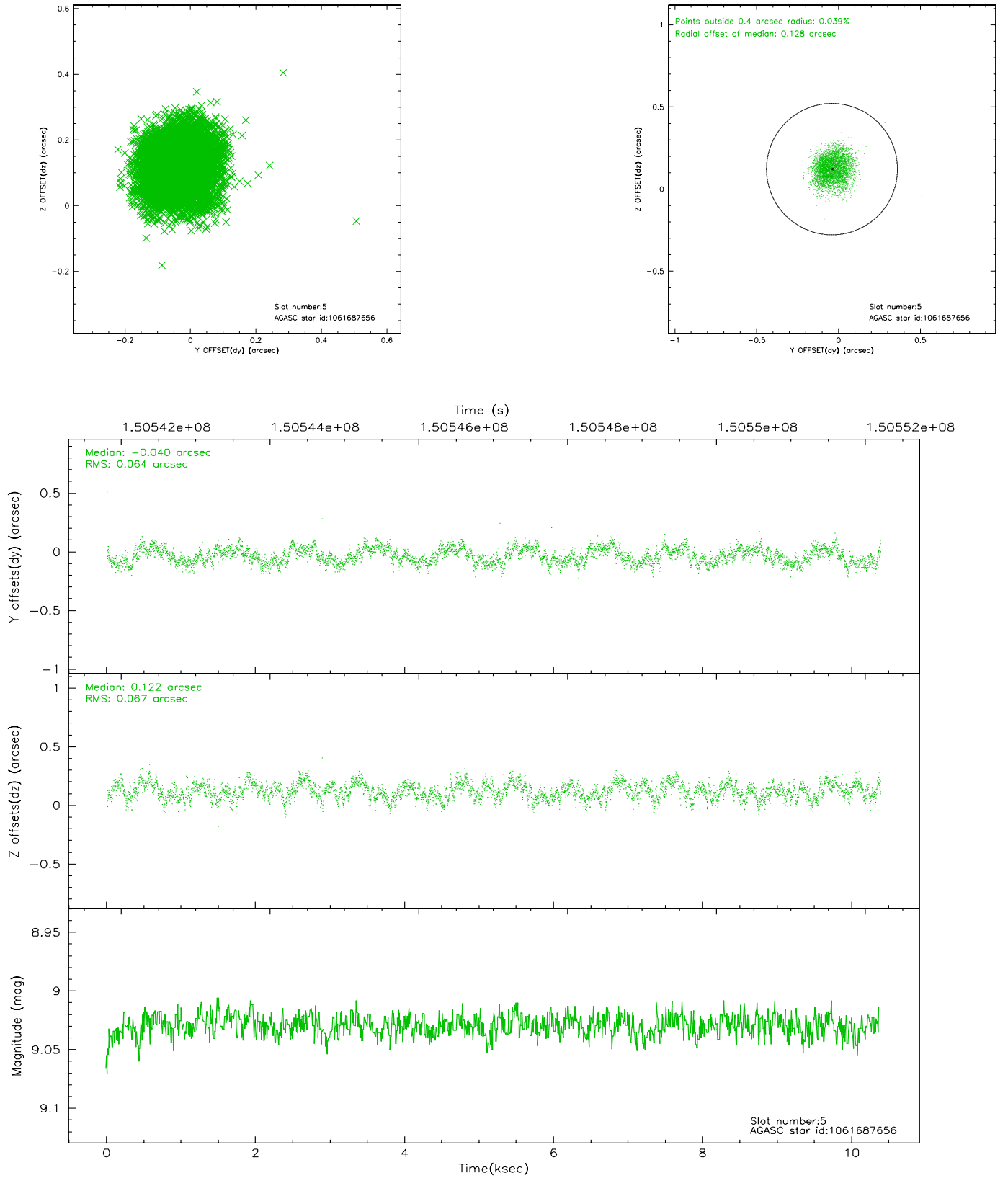
### 2.4.1 Slot 3



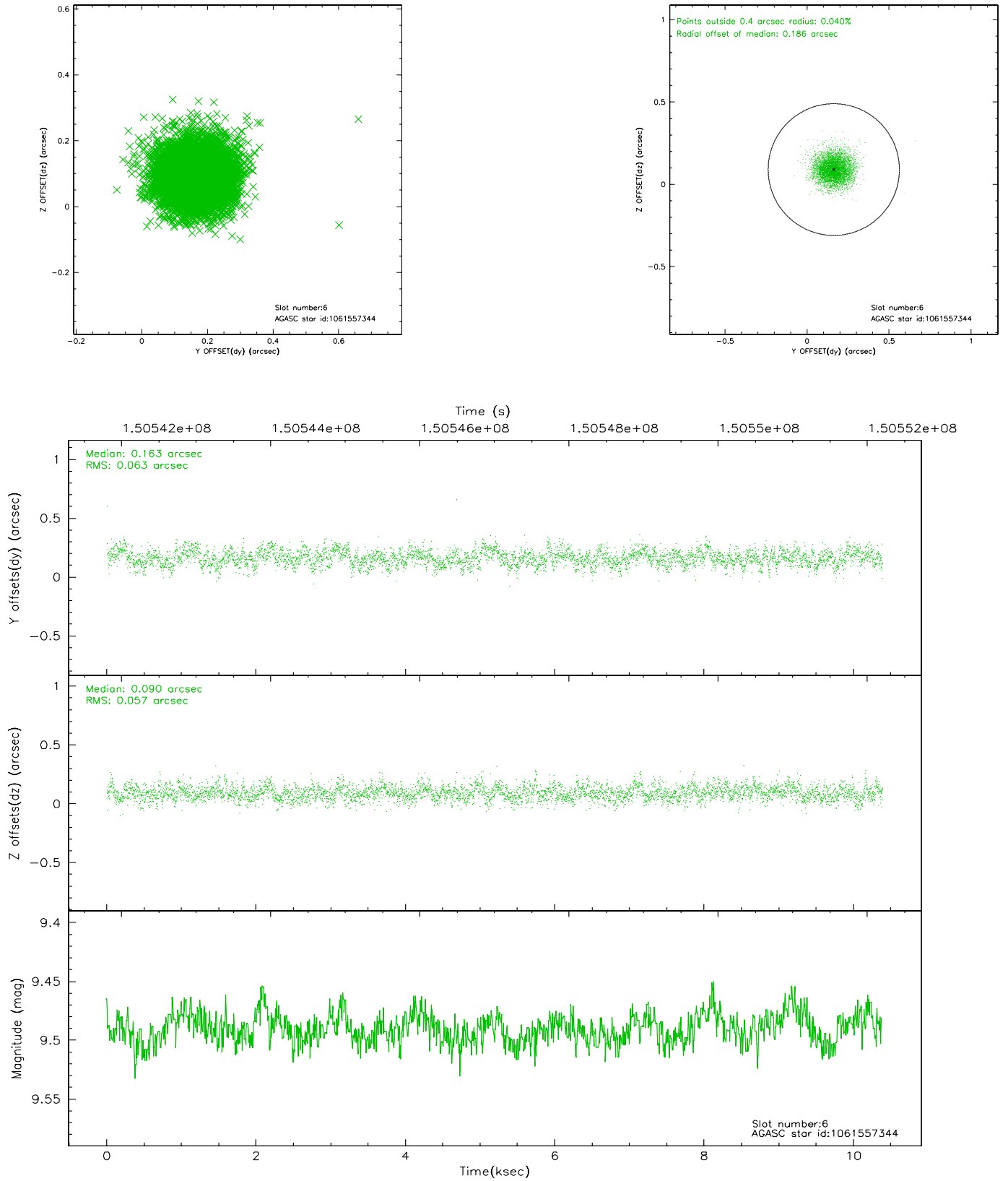
## 2.4.2 Slot 4



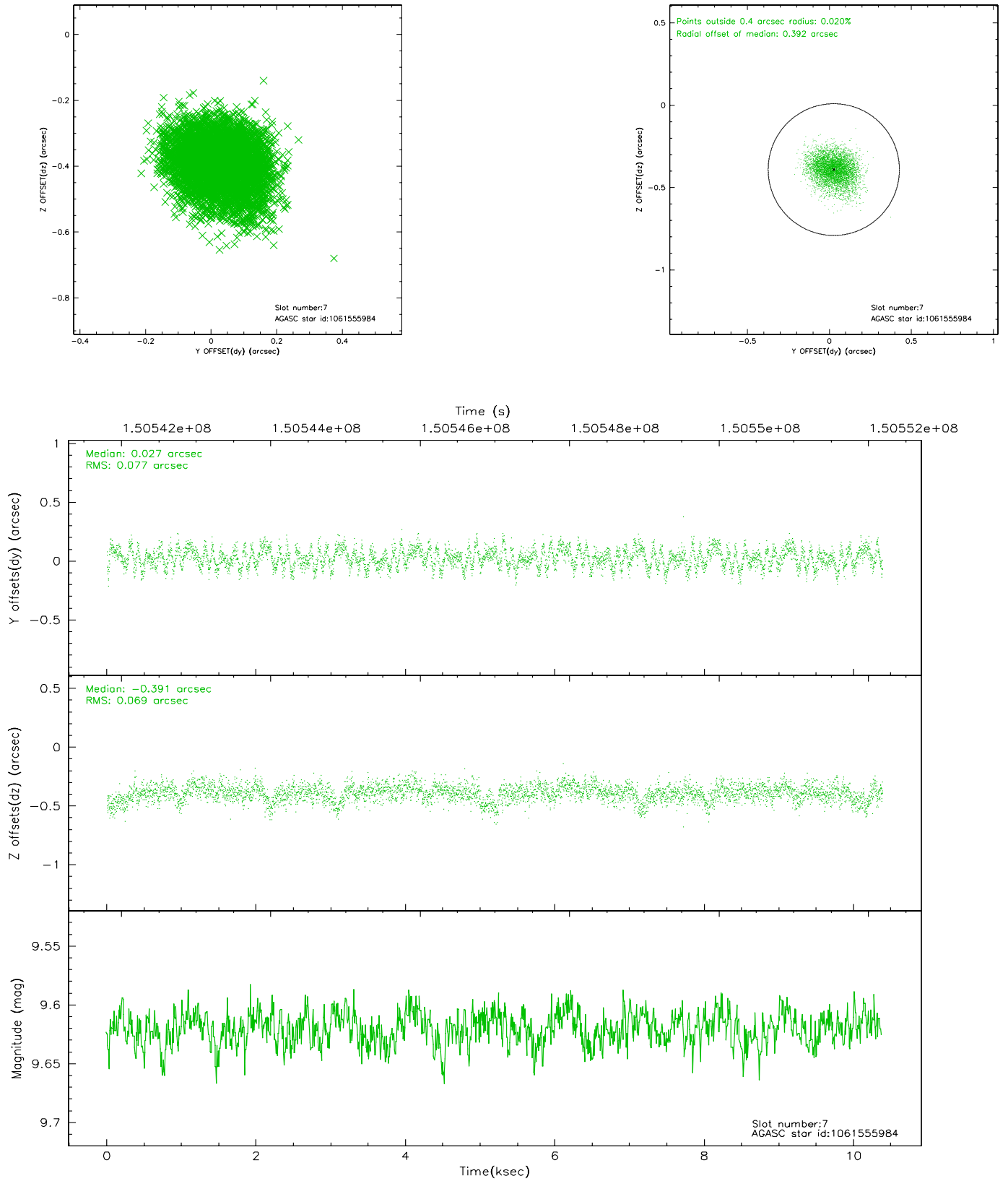
### 2.4.3 Slot 5



## 2.4.4 Slot 6

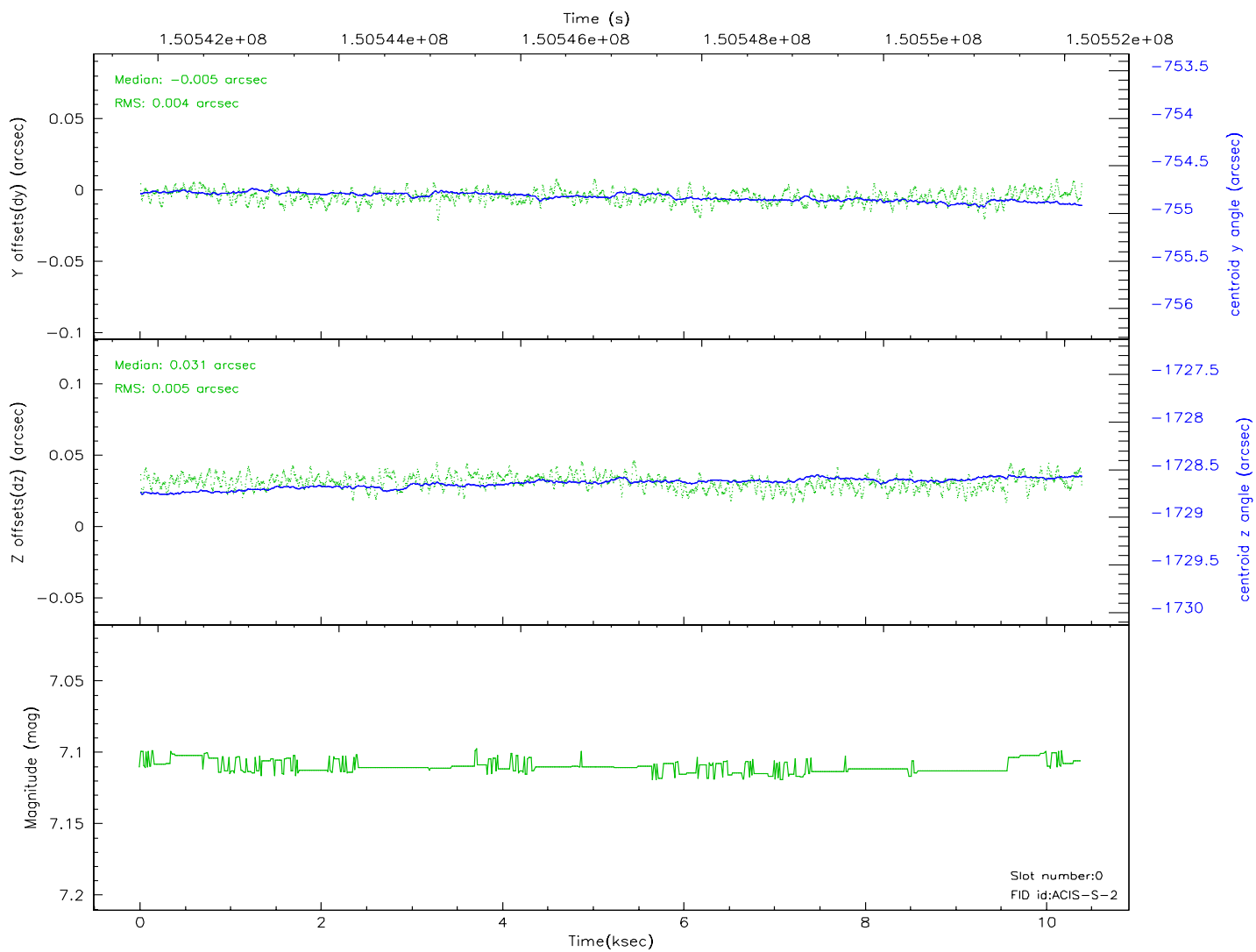
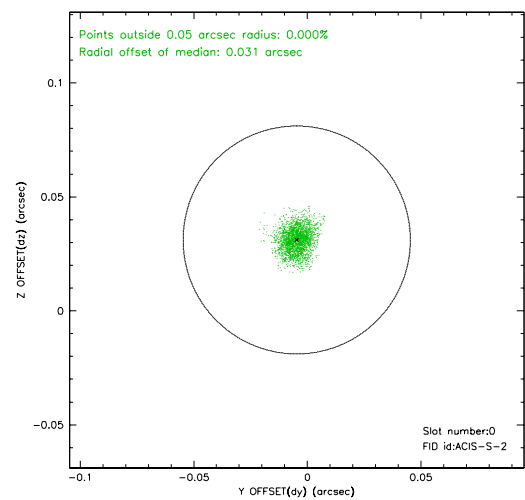
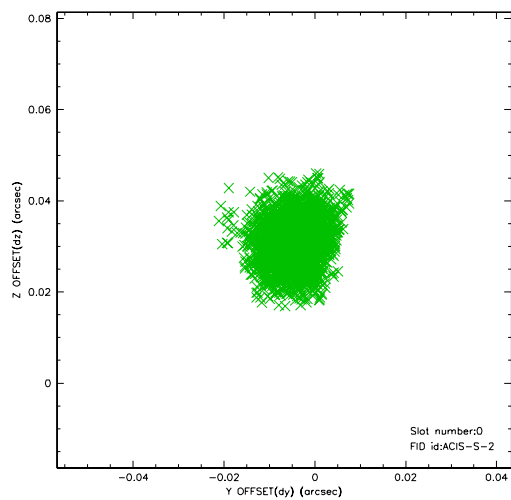


## 2.4.5 Slot 7

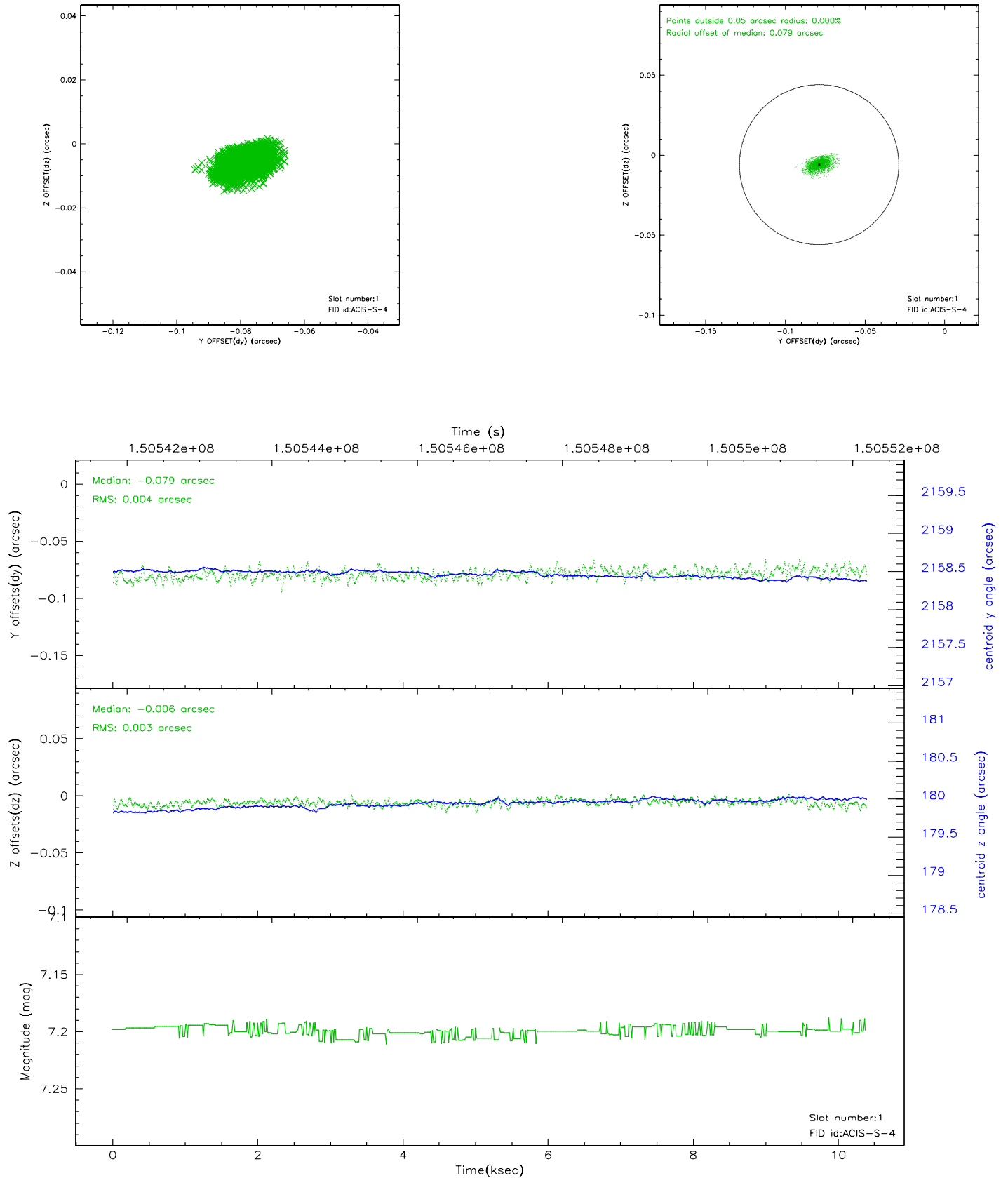


## 2.5 FID Slots

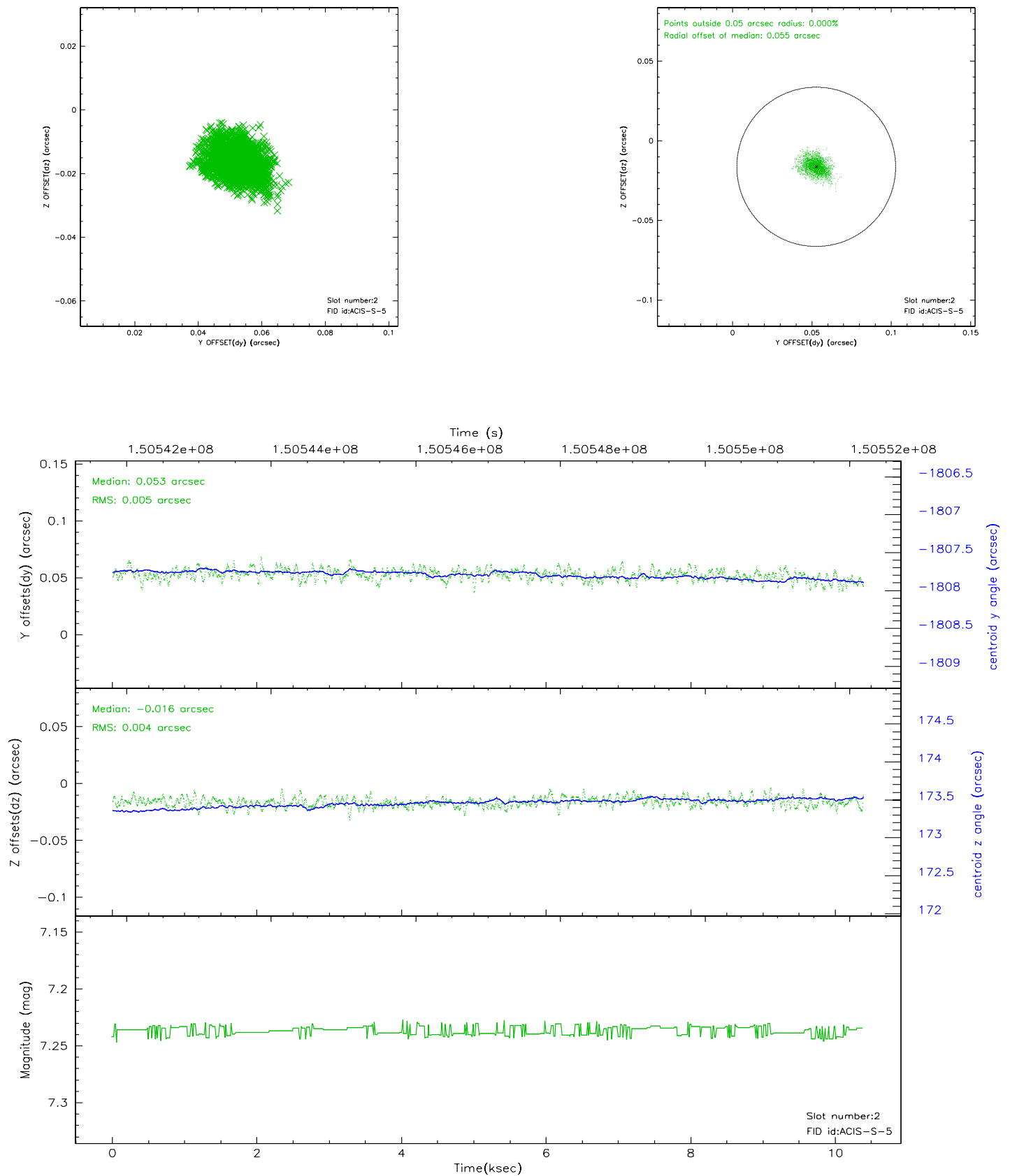
### 2.5.1 Slot 0



## 2.5.2 Slot 1

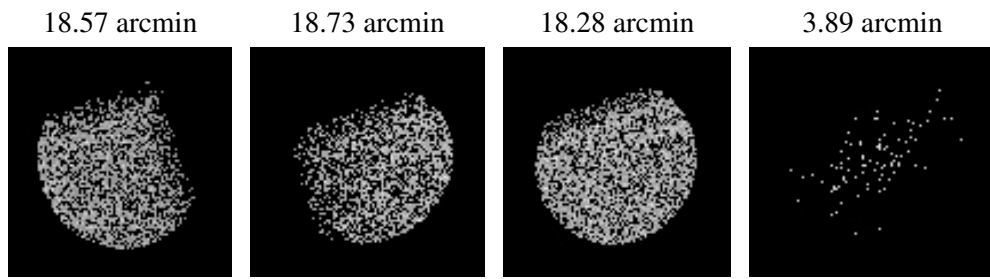


### 2.5.3 Slot 2





### 3 Point Sources



## A Summary

### A.1 Status

V&V Scientist	Beth Sundheim
V&V Date (YYYY-MM-DD)	2006.10.06
V&V Edition	1
V&V Disposition and Status	OK
V&V Charge Time	10.019

### A.2 Comments