

V&V Reference Report

L2 ASCDS Version : 8.4.5

Observation 2427 - L2 Version 3
Chandra X-Ray Center

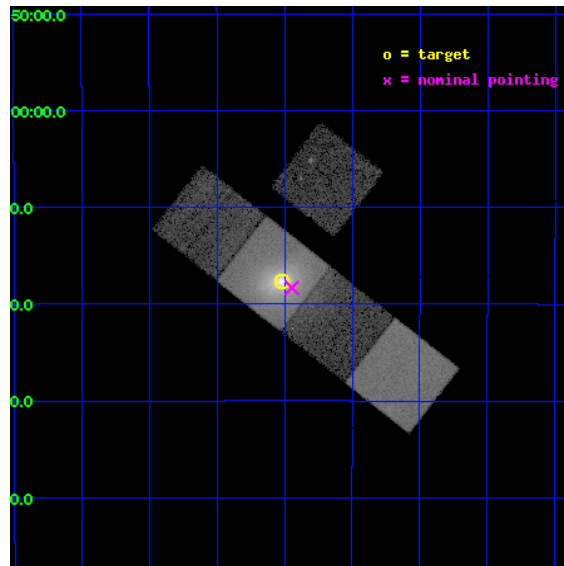
L2 Processing Date : Sep 17 2012

Contents

1	Front	2
2	OBI	3
2.1	OBI	3
2.1.1	Images	3
2.1.2	Bias	3
2.1.3	Parameters	4
2.1.4	Events	4
2.2	Compared Parameters	5
2.3	Aspect	6
2.4	Star Slots	9
2.4.1	Slot 3	9
2.4.2	Slot 4	10
2.4.3	Slot 5	11
2.4.4	Slot 6	12
2.4.5	Slot 7	13
2.5	FID Slots	14
2.5.1	Slot 0	14
2.5.2	Slot 1	15
2.5.3	Slot 2	16
A	Summary	17
A.1	Status	17
A.2	Comments	17

1 Front

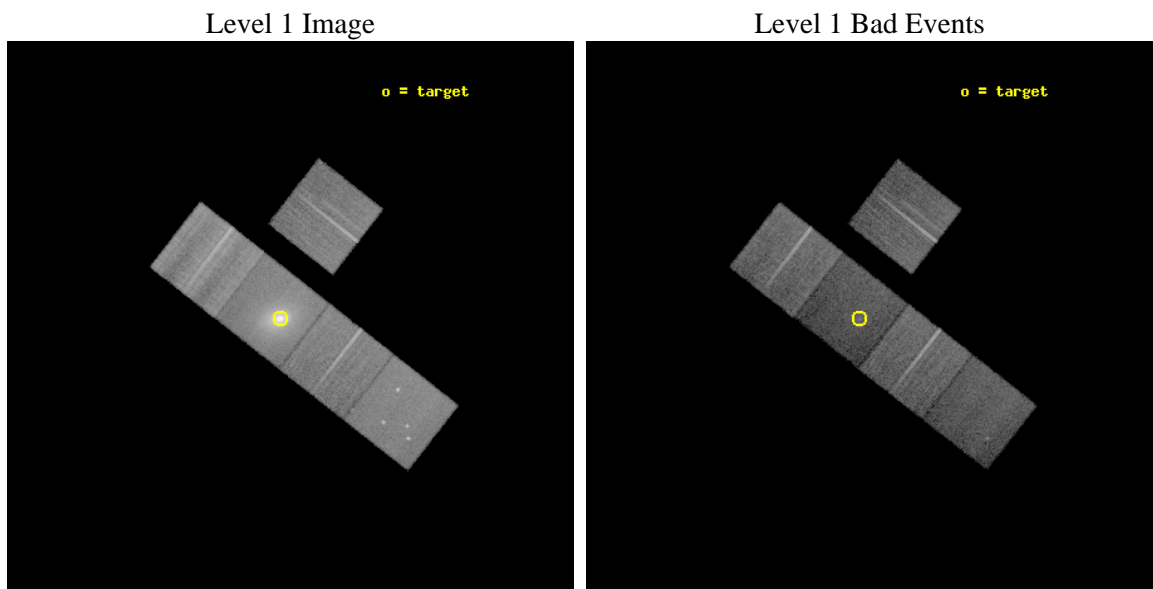
seq_num	800178	Sequence number
obs_id	2427	Observation id
title	REOBSERAVTION OF PKS0745-191	Proposal title
observer	Professor Andrew Fabian	Principal investigator
object	PKS0745-191	Source name
dtcycle	0	
cycle	P	events from which exps? Prim/Second/Both
ra_targ	116.88	Observer's specified target RA [deg]
dec_targ	-19.294167	Observer's specified target Dec [deg]
ra_nom	116.86151025907	Nominal RA [deg]
dec_nom	-19.30552362379	Nominal Dec [deg]
roll_nom	217.97832524565	Nominal Roll [deg]
revision	3	Processing version of data
ontime	18091.599965215	Sum of GTIs [s]
livetime	17855.219892827	Livetime [s]
ontime3	18079.036134243	Sum of GTIs [s]
ontime5	18091.599965215	Sum of GTIs [s]
ontime6	18091.599965215	Sum of GTIs [s]
ontime7	18091.599965215	Sum of GTIs [s]
ontime8	18091.599965215	Sum of GTIs [s]
l2events	281285	Number of level 2 events



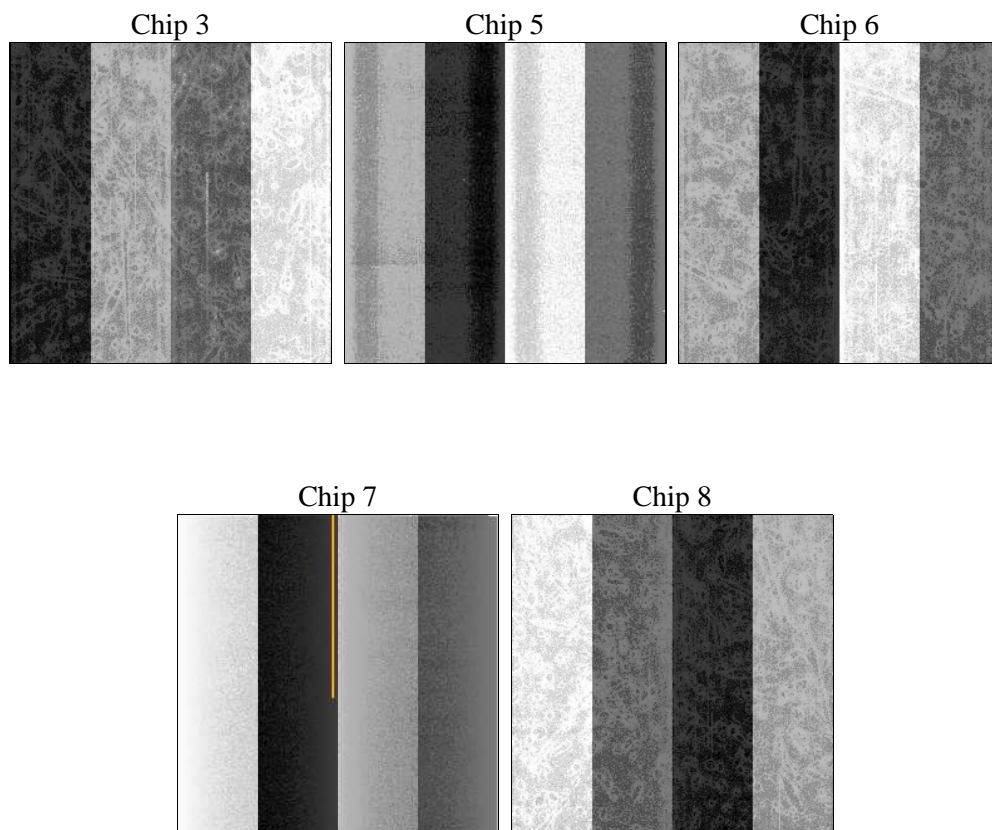
2 OBI

2.1 OBI

2.1.1 Images



2.1.2 Bias



2.1.3 Parameters

obi_num	0	Obi number	sched_exp_time	18000.000000	[s] Scheduled observation exposure time
ascdsver	8.4.5	Processing system revision	ontime	18091.599965215	Sum of GTIs [s]
caldbver	4.5.1.1	 	ontime3	18079.036134243	Sum of GTIs [s]
date	2012-09-17T22:25:53	Date and time of file creation	ontime5	18091.599965215	Sum of GTIs [s]
revision	3	Processing version of data	ontime6	18091.599965215	Sum of GTIs [s]
			ontime7	18091.599965215	Sum of GTIs [s]
			ontime8	18091.599965215	Sum of GTIs [s]
			l1events	790991	Number of level 1 events

2.1.4 Events

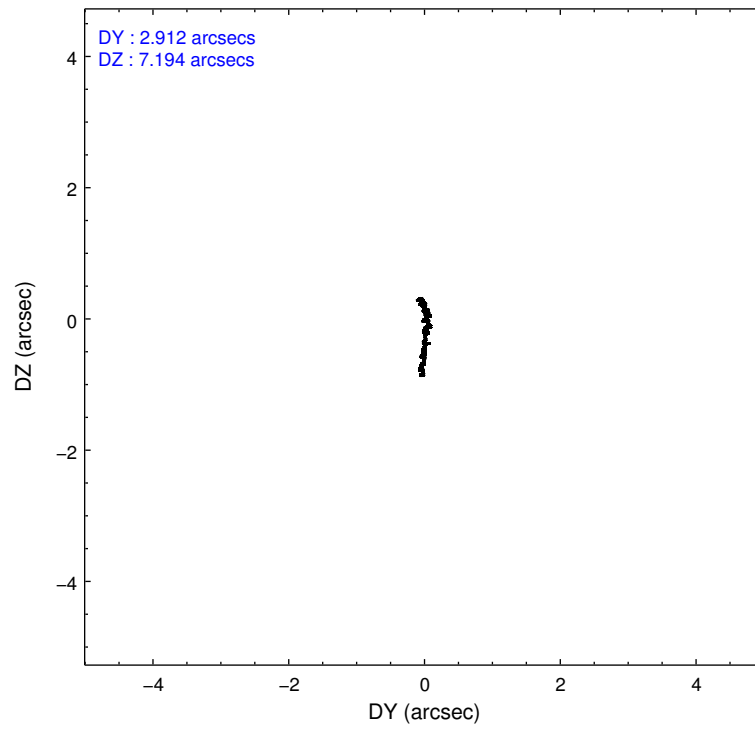
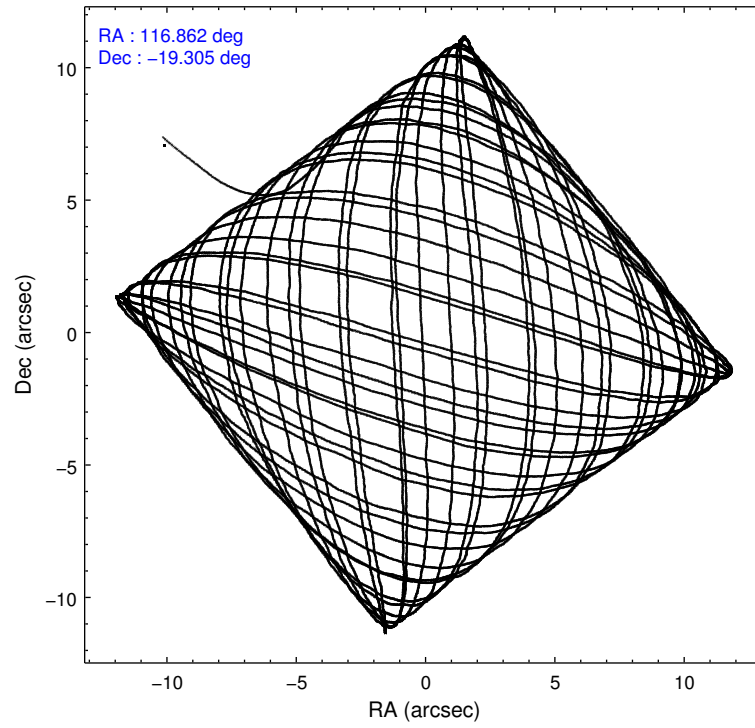
	ccd 3	ccd 5	ccd 6	ccd 7	ccd 8
level 1 events	111244	134291	121283	244320	179853
rejected events	100840	66066	104939	58901	113041
rejected %	90%	49%	86%	24%	62%

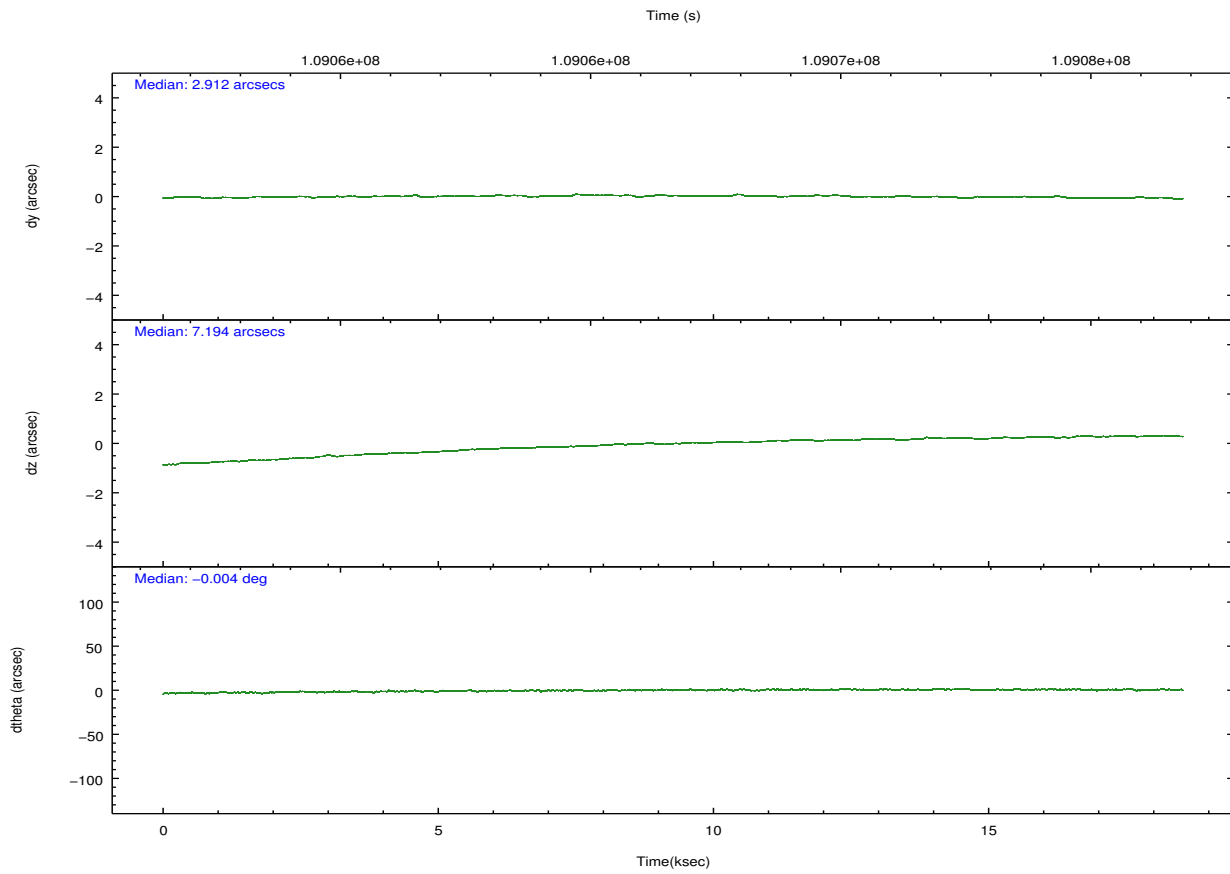
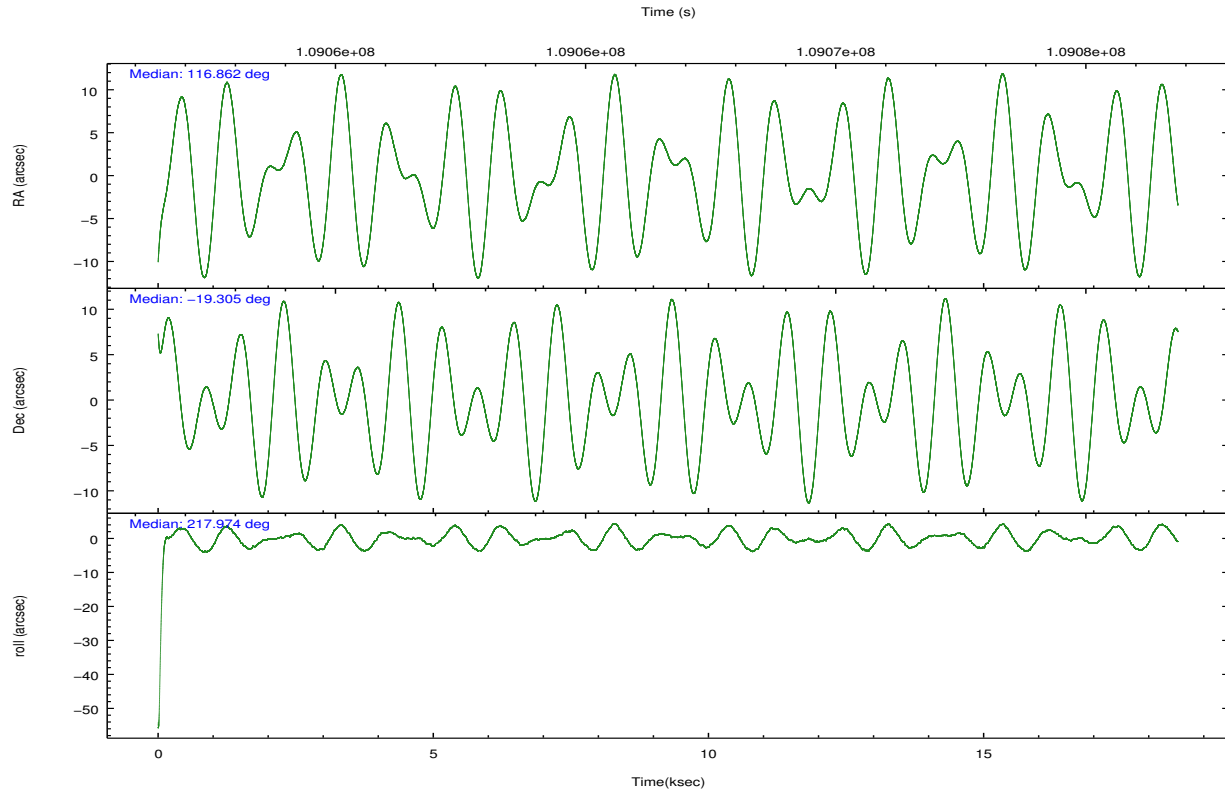
	ccd 3	ccd 5	ccd 6	ccd 7	ccd 8
grade 0 events	4151	9468	8193	40679	20137
	3%	7%	6%	16%	11%
grade 1 events	46	365	63	154	188
	0%	0%	0%	0%	0%
grade 2 events	2149	18646	3233	45782	11409
	1%	13%	2%	18%	6%
grade 3 events	1136	3623	1328	20816	9925
	1%	2%	1%	8%	5%
grade 4 events	1093	3538	1333	20596	8789
	0%	2%	1%	8%	4%
grade 5 events	3371	11074	3881	12108	5852
	3%	8%	3%	4%	3%
grade 6 events	1885	32973	2262	57605	16573
	1%	24%	1%	23%	9%
grade 7 events	97413	54604	100990	46580	106980
	87%	40%	83%	19%	59%

2.2 Compared Parameters

Parameter	Planned	Actual	Parameter	Planned	Actual
Instrument	ACIS	ACIS	Obspar format version number	7	7
Detector	ACIS-35678	ACIS-35678	Obspar file type	PREDICTED	ACTUAL
Grating	NONE	NONE	Obspar update status	NONE	UPDATED
Data mode	VFAINT	VFAINT	Number of optional ACIS chips dropped	0	0
Observation mode	POINTING	POINTING	On-chip summing requested	N	N
[deg] Pointing RA	116.872050	116.8615102590702	Subarray requested	NONE	NONE
[deg] Pointing Dec	-19.280156	-19.30552362378979	Alternating exposures requested	N	N
[deg] Pointing Roll	217.825221	217.9783252456526	[s] Primary exposure time	0.000000	3.1
[mm] SIM focus pos	-0.684267	-0.6828225247311905			
[mm] SIM defocus	0	0.001444936568705701			
[mm] SIM translation stage pos	-190.132523	-190.1400660498719			
[mm] SIM translation stage offset	0	0.00754346686406393			
[s] Observation start time (MET)	109057914.184000	109056772.51939			
Observation start date	2001-06-16T05:50:50	2001-06-16T05:32:52			
[s] Observation end time (MET)	109075914.184000	109076867.64517			
Observation end date	2001-06-16T10:50:50	2001-06-16T11:07:47			
Read mode	TIMED	TIMED			

2.3 Aspect



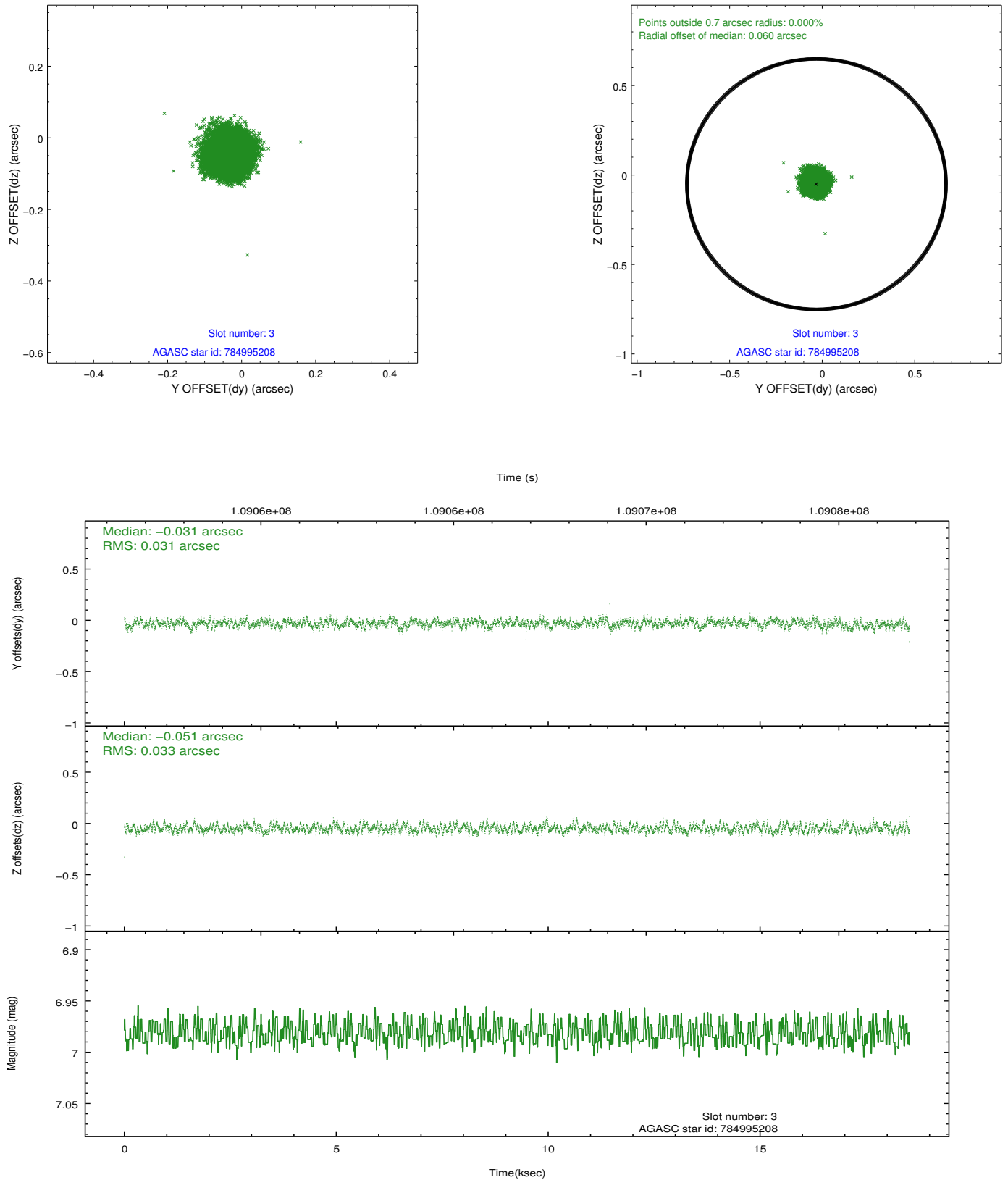


Slot Statistics

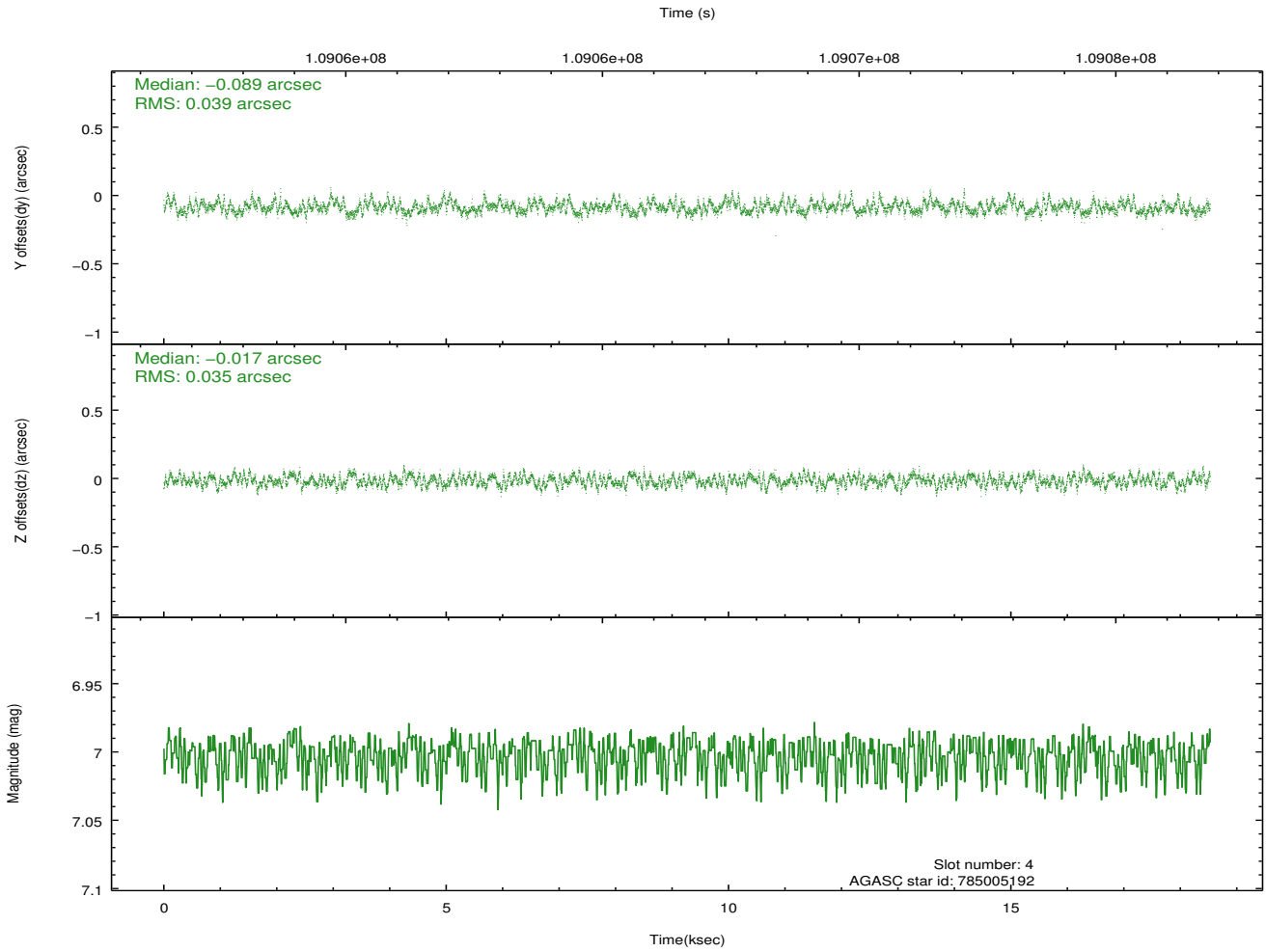
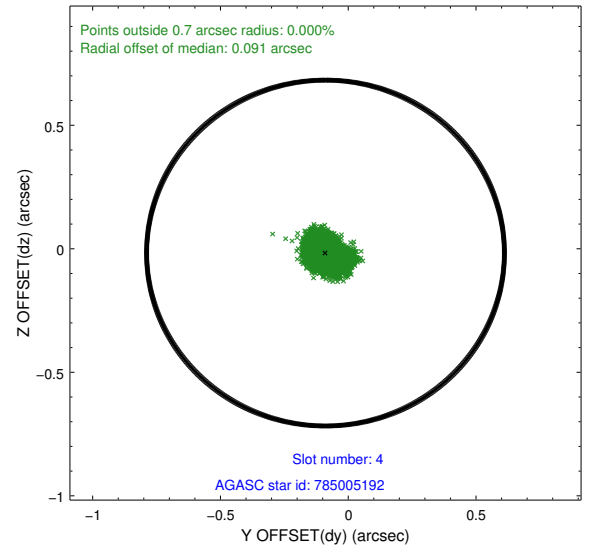
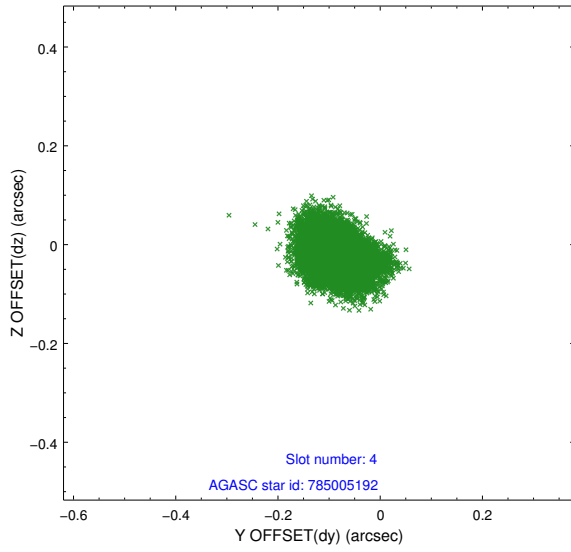
slot	status	id	mag	n_pts	med_dy	med_dz	dr1	dr2	ra	dec	mean_y	mean_z
0	FID	ACIS-S-2	7.11	4520	-0.005	0.014	0.017	0.028	0.000000	0.000000	-755.56	-1728.25
1	FID	ACIS-S-4	7.20	4520	-0.061	-0.002	0.012	0.025	0.000000	0.000000	2157.57	180.00
2	FID	ACIS-S-5	7.24	4520	0.035	-0.004	0.012	0.024	0.000000	0.000000	-1808.08	173.91
3	GUIDE	784995208	6.98	9040	-0.031	-0.051	0.049	0.076	117.440623	-19.006902	-2129.61	412.46
4	GUIDE	785005192	7.00	9040	-0.089	-0.017	0.056	0.090	117.182950	-19.174871	-1066.78	349.98
5	GUIDE	784994704	6.97	9040	-0.010	0.033	0.046	0.071	116.488404	-18.904531	204.15	-1867.82
6	GUIDE	785000528	6.90	9040	-0.074	-0.115	0.044	0.070	116.828383	-19.401048	384.39	252.94
7	GUIDE	785012056	8.59	9037	0.206	0.149	0.061	0.098	116.827720	-19.932259	1558.76	1763.01

2.4 Star Slots

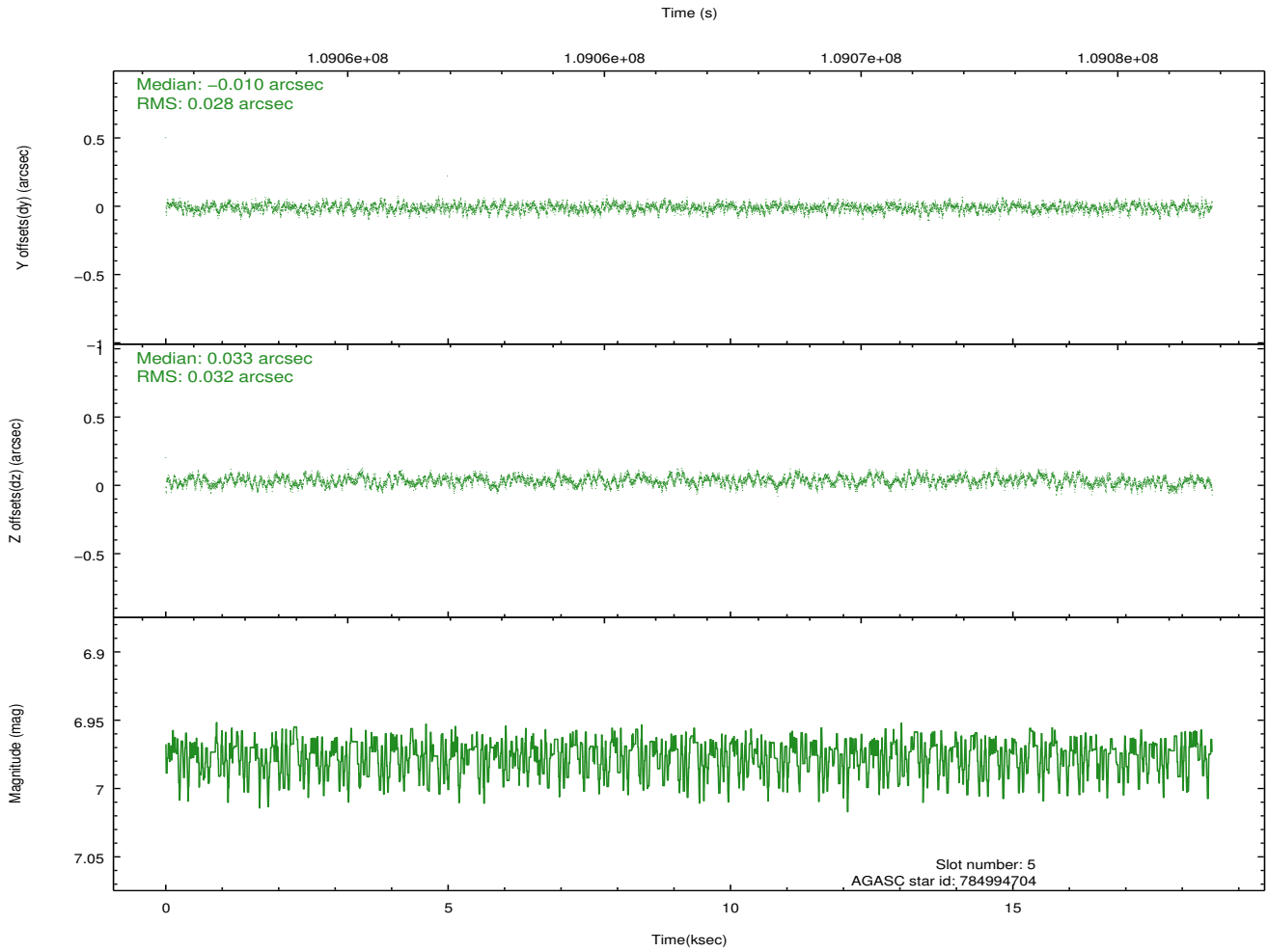
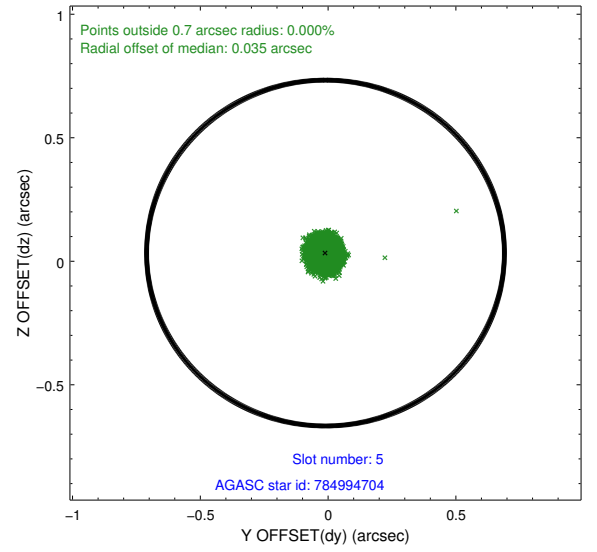
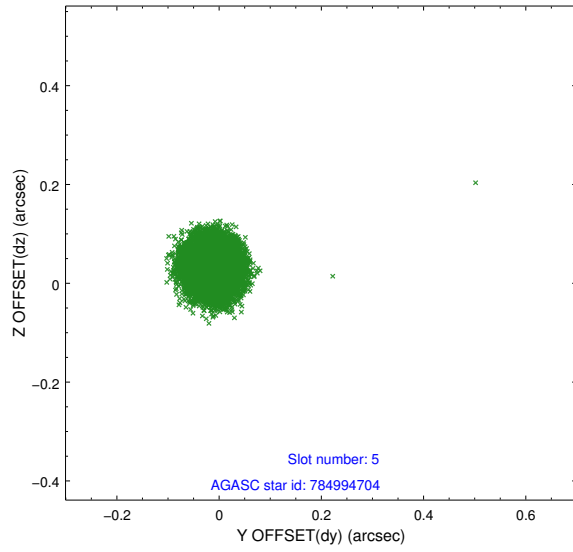
2.4.1 Slot 3



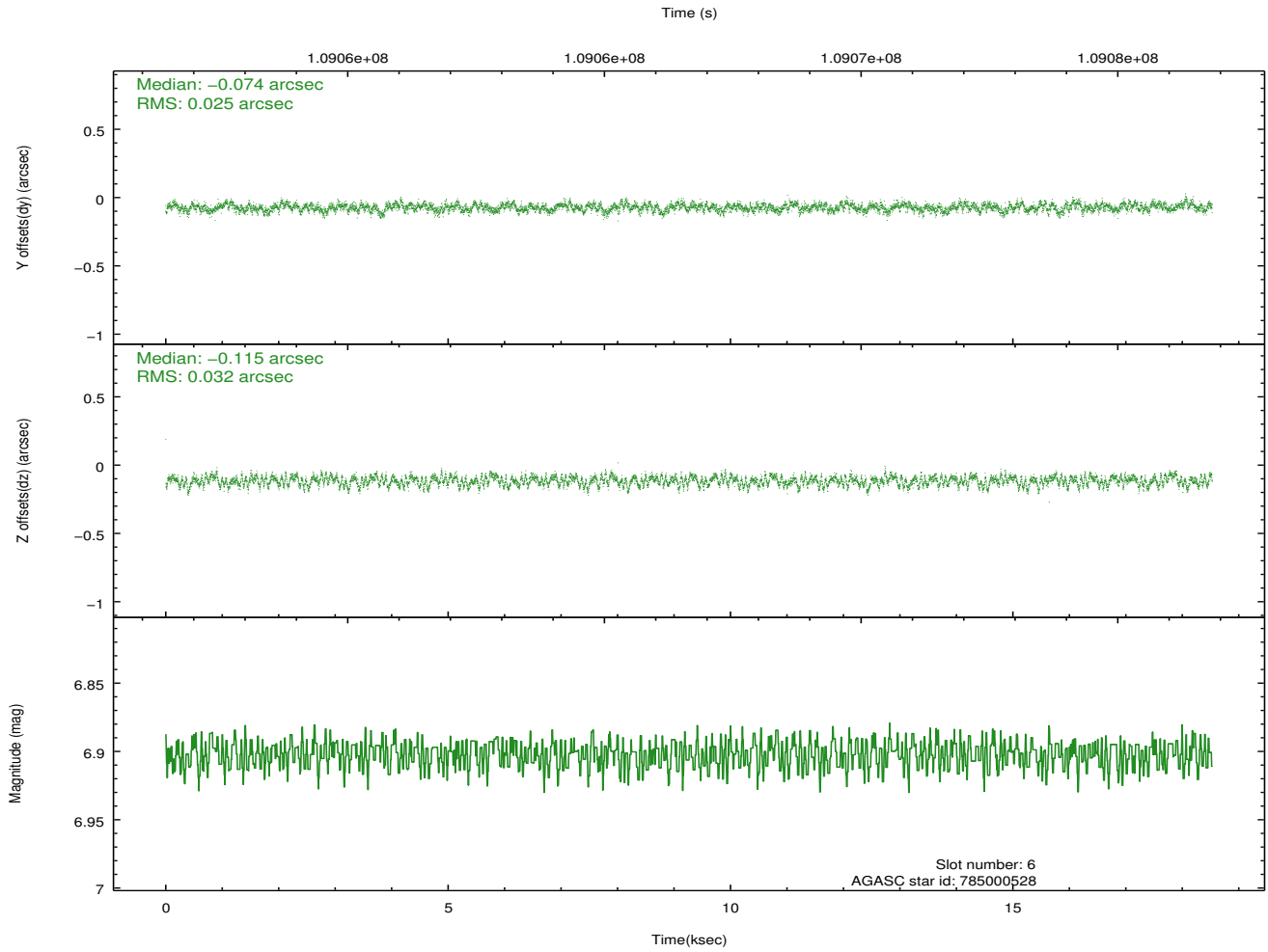
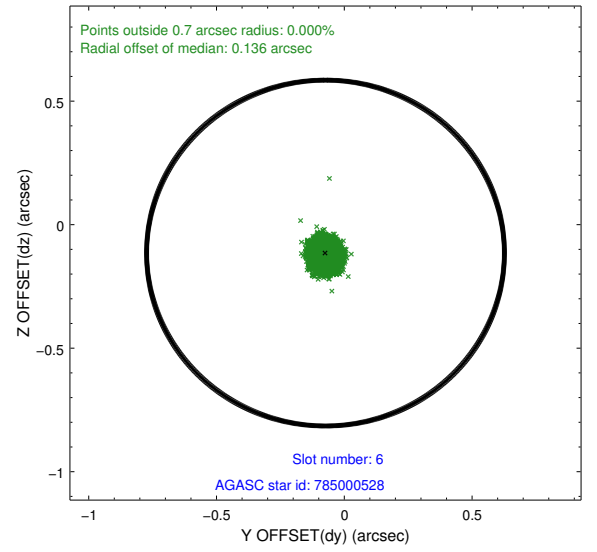
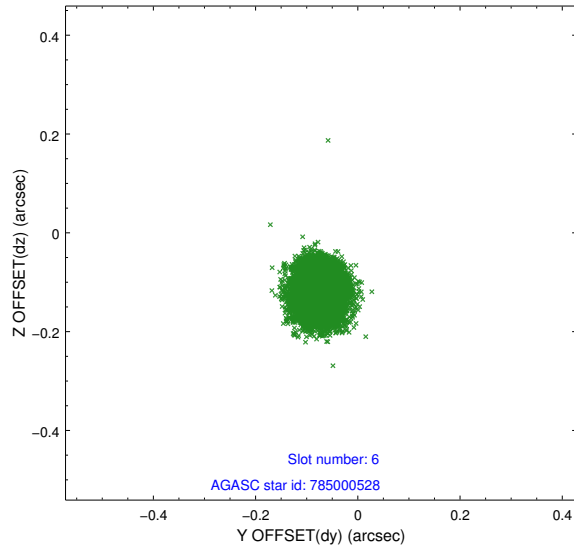
2.4.2 Slot 4



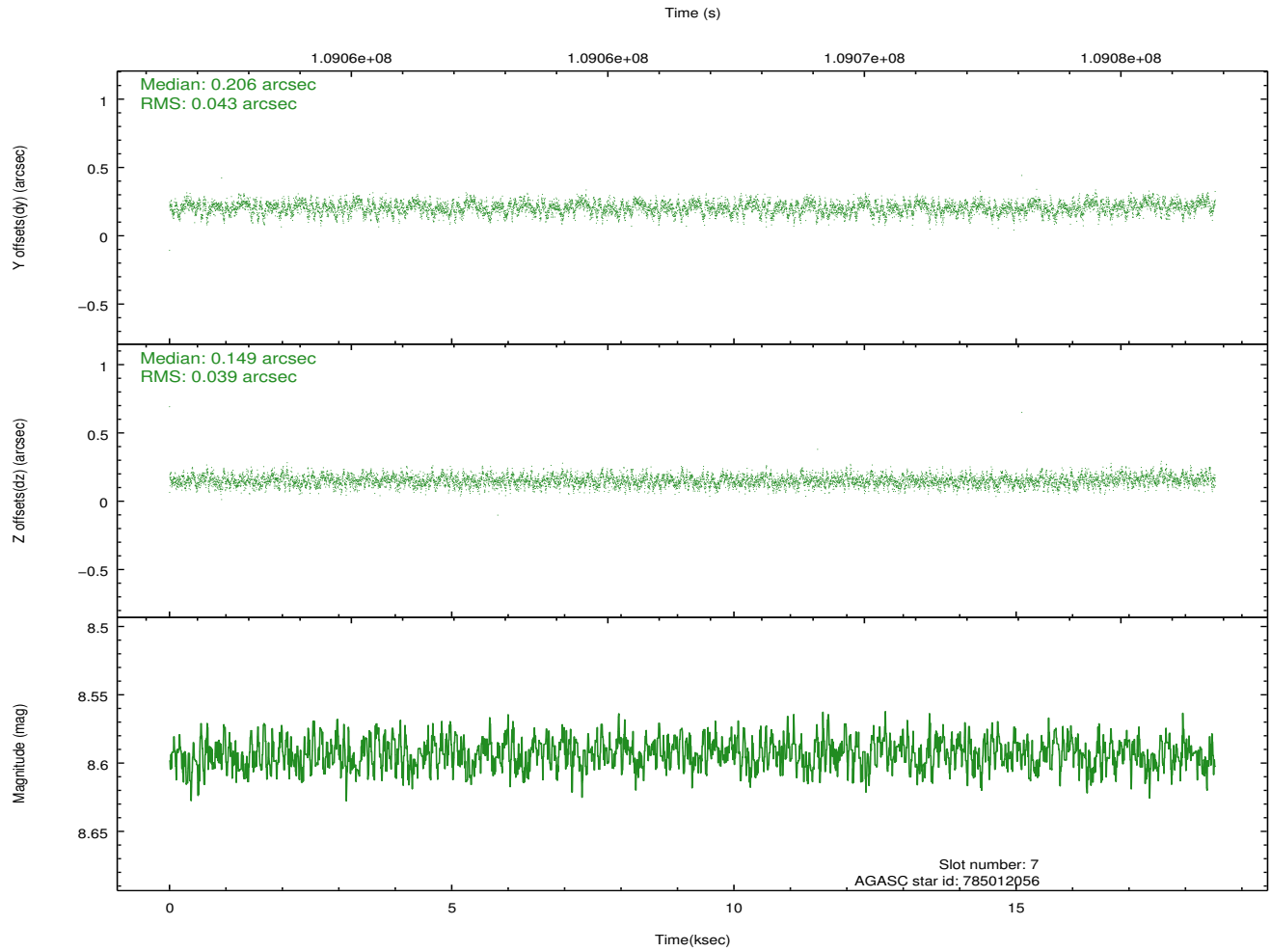
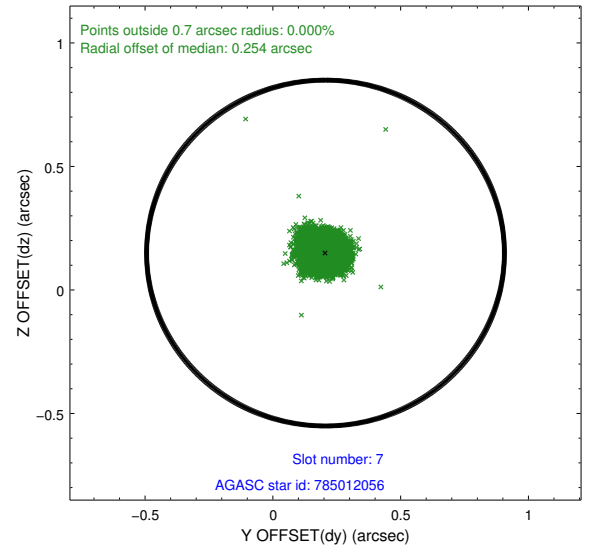
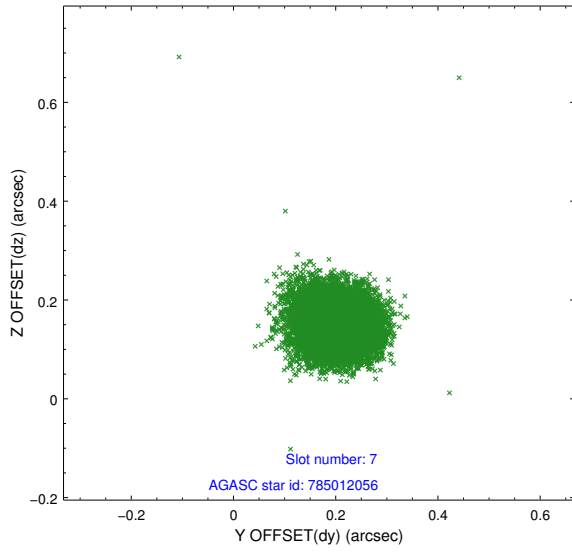
2.4.3 Slot 5



2.4.4 Slot 6

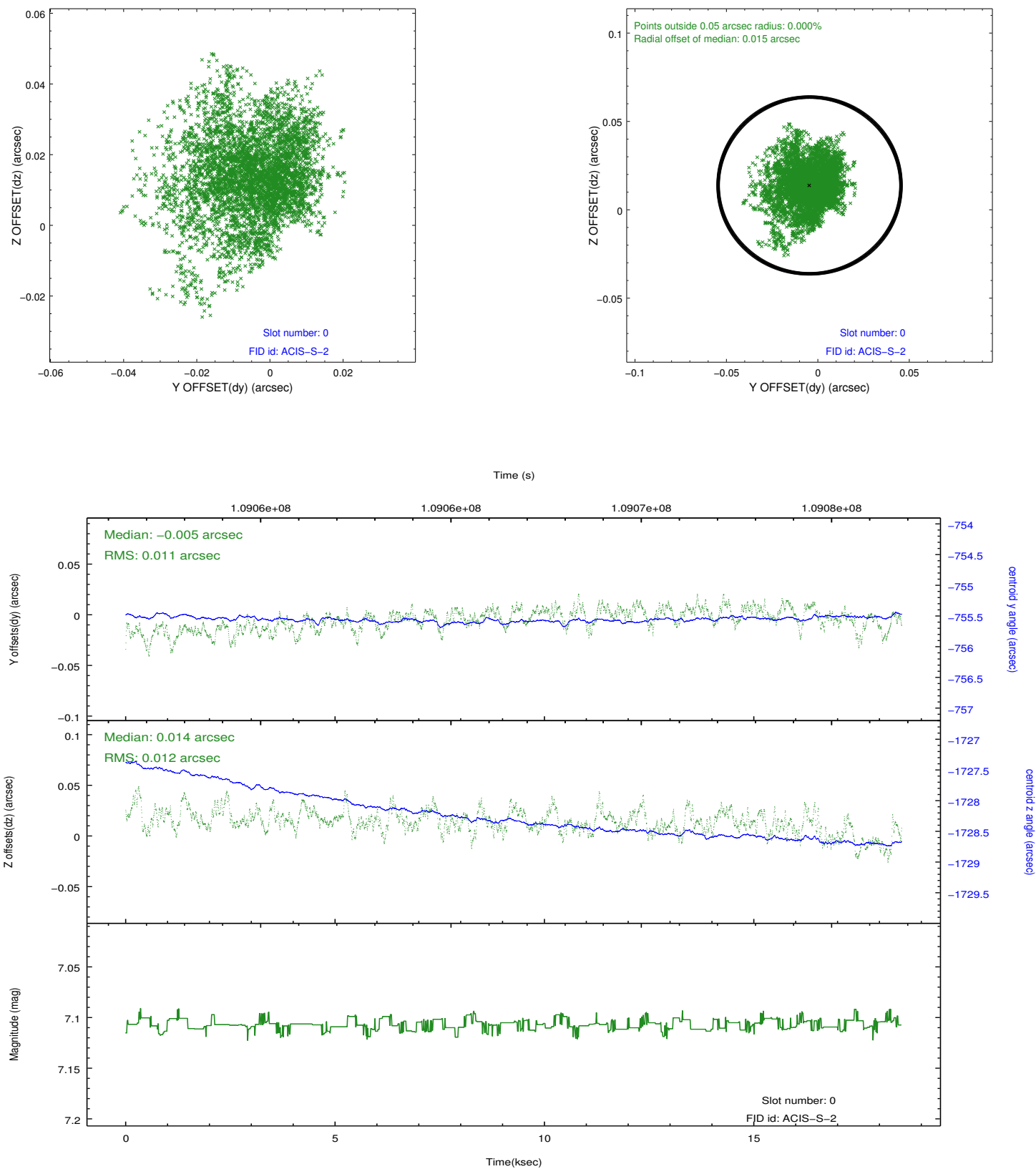


2.4.5 Slot 7

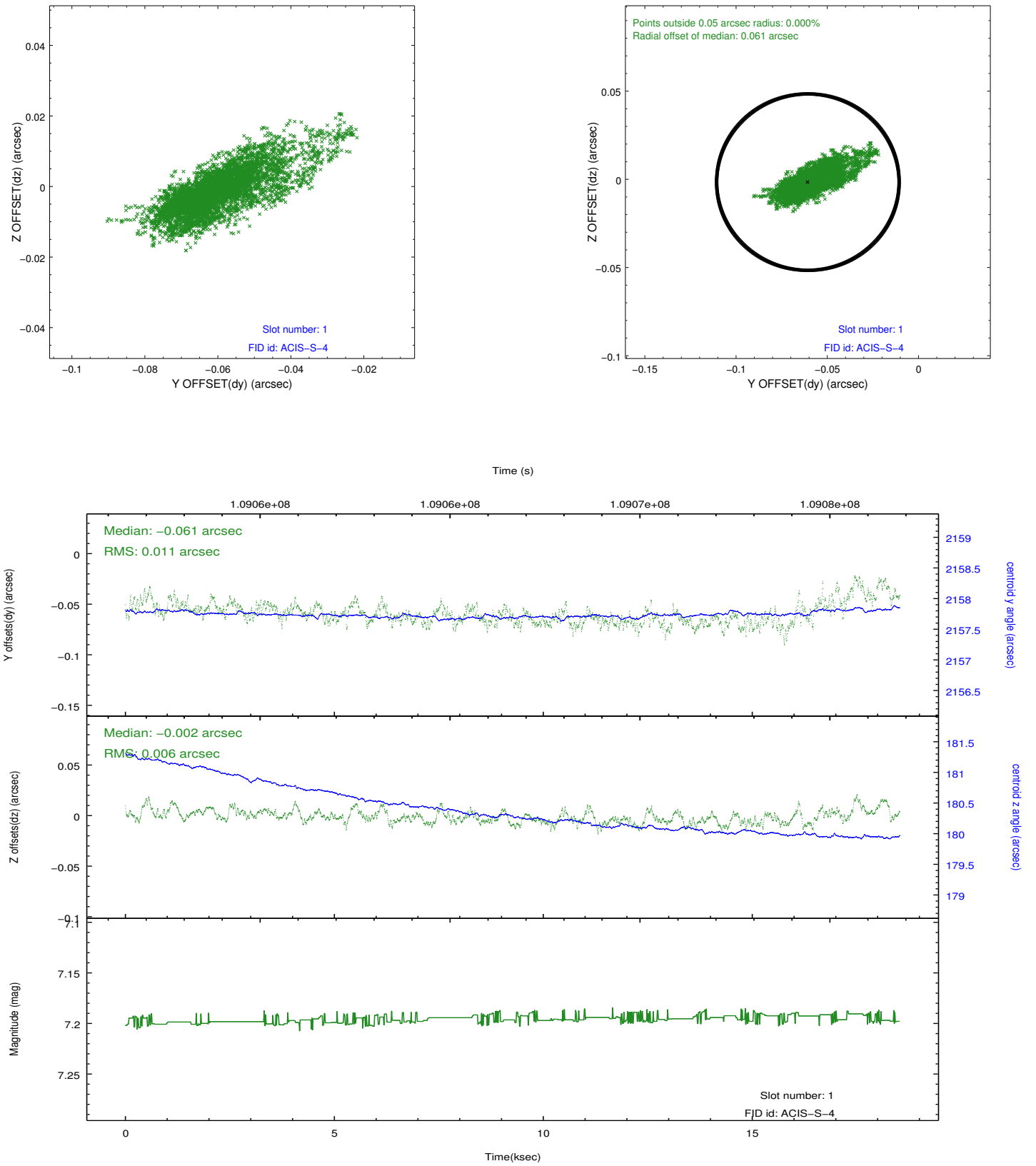


2.5 FID Slots

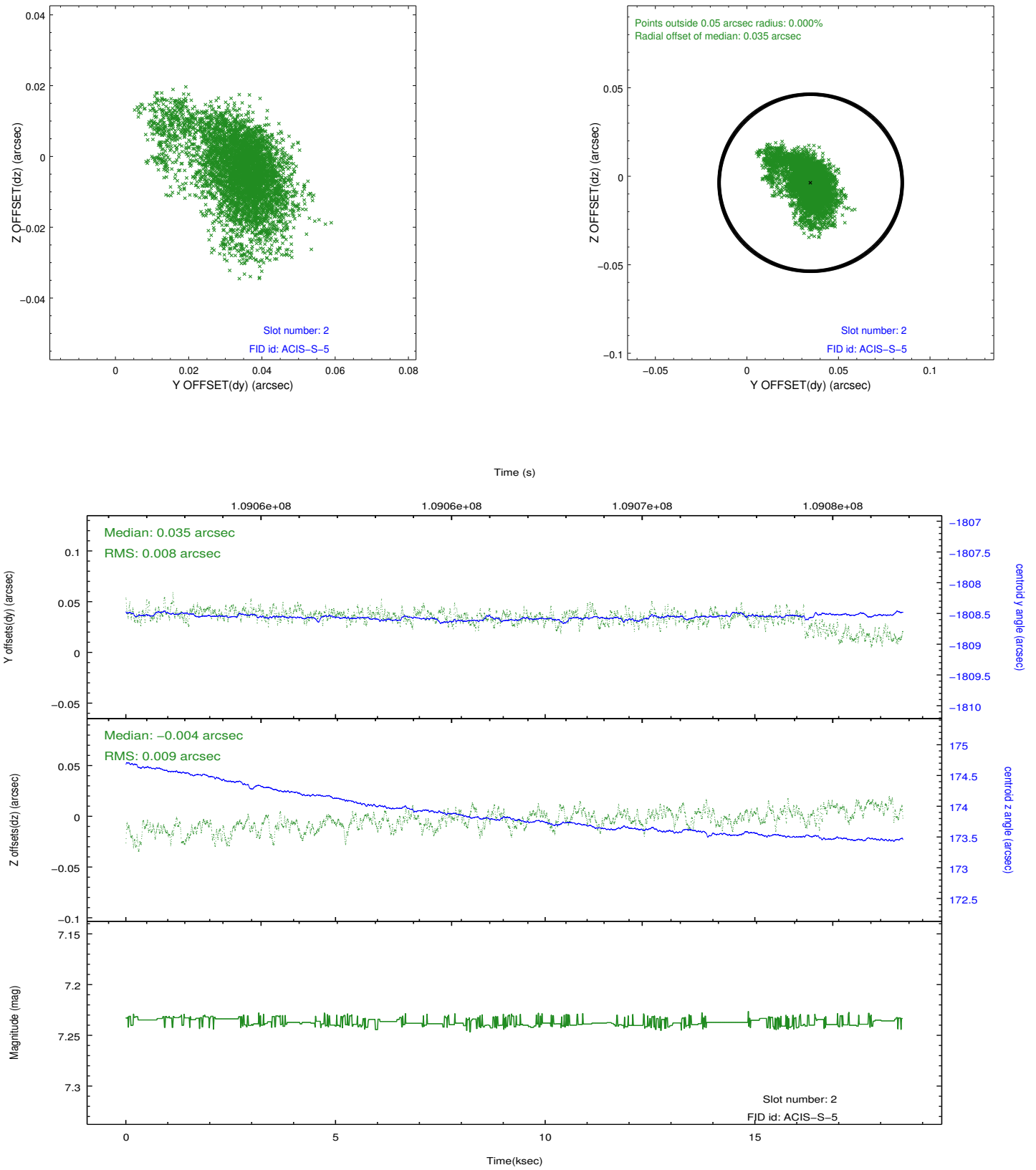
2.5.1 Slot 0



2.5.2 Slot 1



2.5.3 Slot 2



A Summary

A.1 Status

V&V Scientist	Beth Sundheim
V&V Date (YYYY-MM-DD)	2012.09.20
V&V Edition	1
V&V Disposition and Status	OK
V&V Charge Time	18.094

A.2 Comments