

V&V Reference Report

L2 ASCDS Version : 7.6.10

Observation 2127 - L2 Version 001
Chandra X-Ray Center

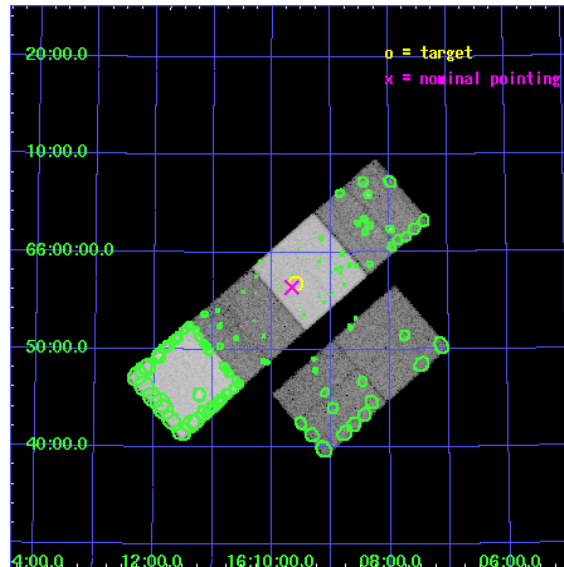
L2 Processing Date : Jan 10 2007

Contents

1	Front	2
2	OBI	3
2.1	OBI	3
2.1.1	Images	3
2.1.2	Bias	3
2.1.3	Parameters	4
2.1.4	Events	4
2.2	Compared Parameters	5
2.3	Aspect	6
2.4	Star Slots	9
2.4.1	Slot 3	9
2.4.2	Slot 4	10
2.4.3	Slot 5	11
2.4.4	Slot 6	12
2.4.5	Slot 7	13
2.5	FID Slots	14
2.5.1	Slot 0	14
2.5.2	Slot 1	15
2.5.3	Slot 2	16
3	Point Sources	17
A	Summary	18
A.1	Status	18
A.2	Comments	18

1 Front

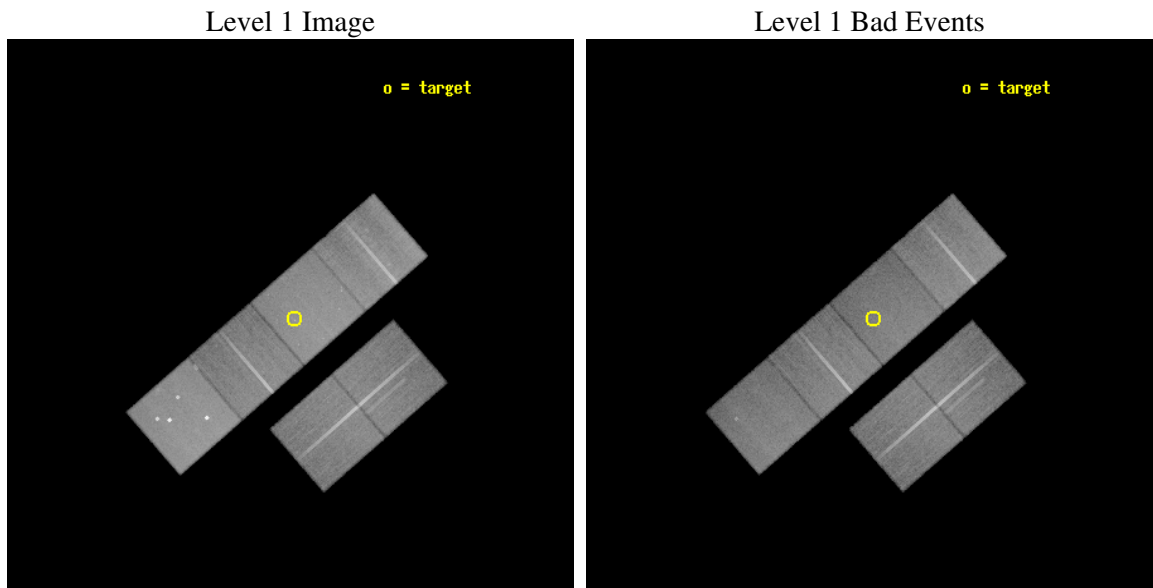
seq_num	700317
obs_id	2127
title	MAGNETIC FIELD STRENGTH IN THE HOTSPOTS OF RADIO GALAXIES & QUASARS: SYNCHROTRON SELF-COMPTON EMISSION & EQUIPARTITION
observer	Dr Martin Hardcastle
object	3C330
dtcycle	0
cycle	P
ra_targ	242.400833
dec_targ	65.947889
ra_nom	242.41573736906
dec_nom	65.940287692297
roll_nom	318.87522355228
revision	2
ontime	44751.959071428
livetime	44185.282819271
ontime2	44751.959071428
ontime3	44751.959081426
ontime5	44755.200041682
ontime6	44755.200041682
ontime7	44751.959071428
ontime8	44751.959240928
l2events	423307



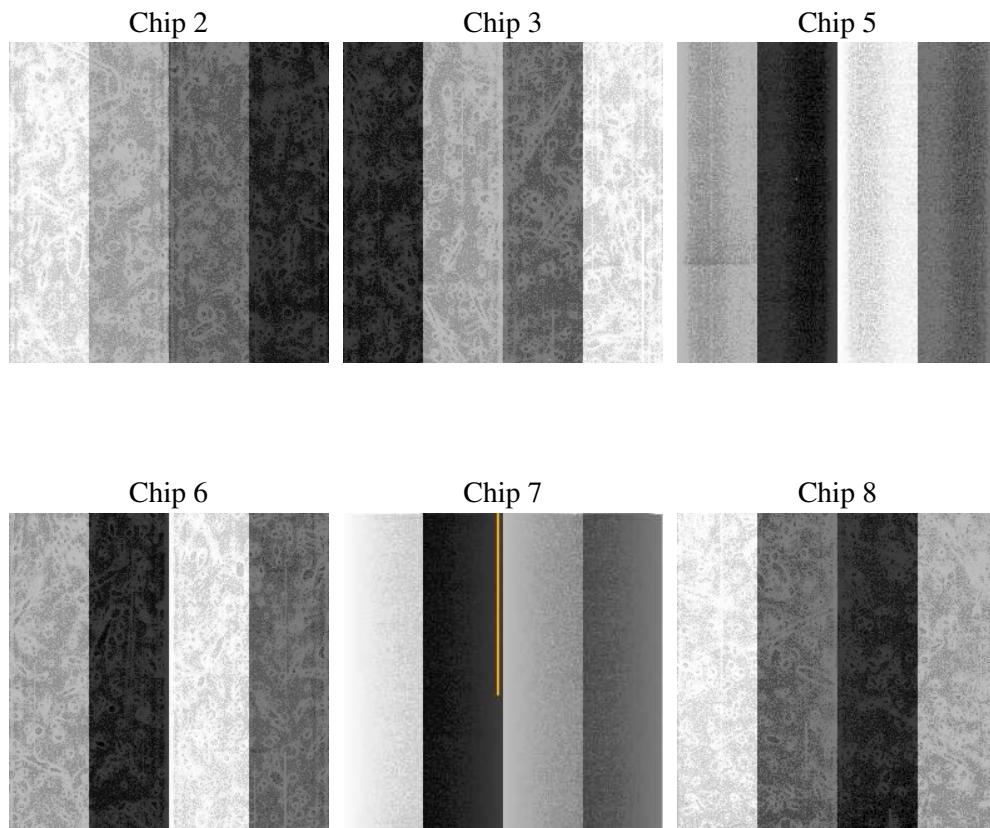
2 OBI

2.1 OBI

2.1.1 Images



2.1.2 Bias



2.1.3 Parameters

obi_num	0
ascdsver	7.6.10
caldsver	3.3.0
date	2007-01-10T13:45:07
revision	2

sched_exp_time	45000.000000
ontime	44751.959071428
ontime2	44751.959071428
ontime3	44751.959081426
ontime5	44755.200041682
ontime6	44755.200041682
ontime7	44751.959071428
ontime8	44751.959240928
l1events	1914629

2.1.4 Events

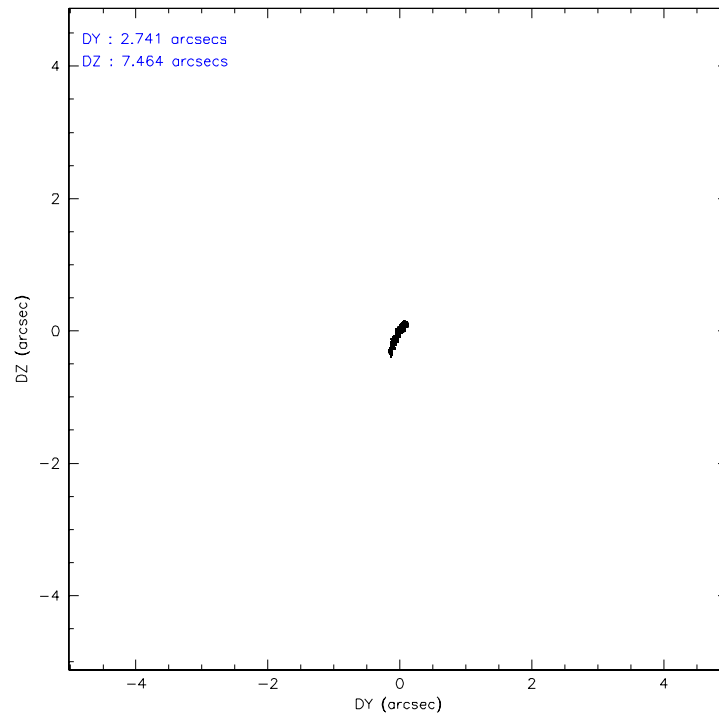
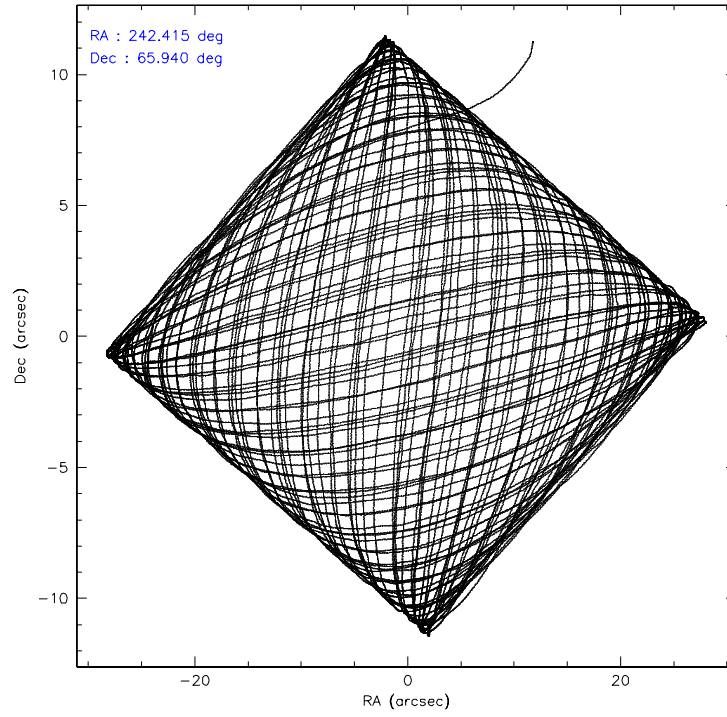
	ccd 2	ccd 3	ccd 5	ccd 6	ccd 7	ccd 8
level 1 events	276533	262826	399753	274471	351935	349111
rejected events	245602	232577	208047	242148	204919	278307
rejected %	88%	88%	52%	88%	58%	79%

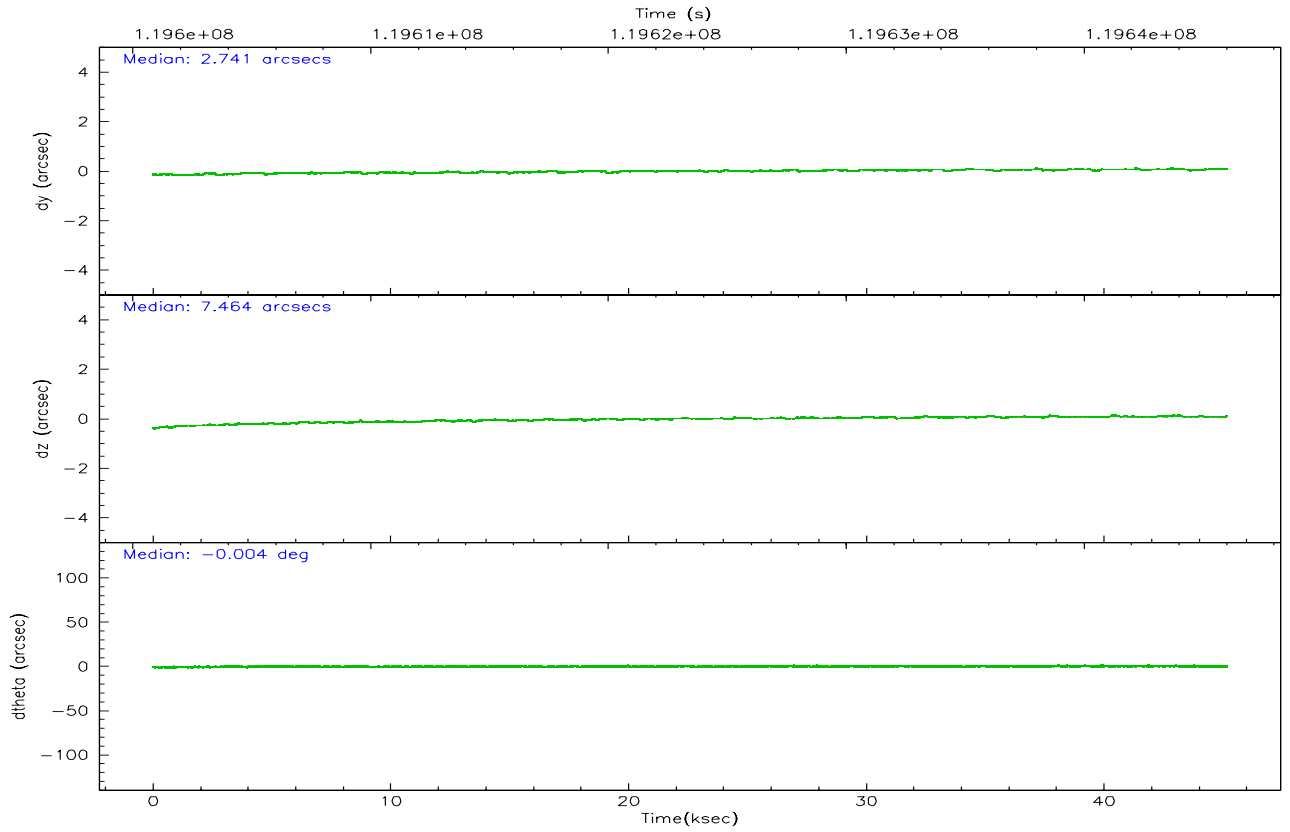
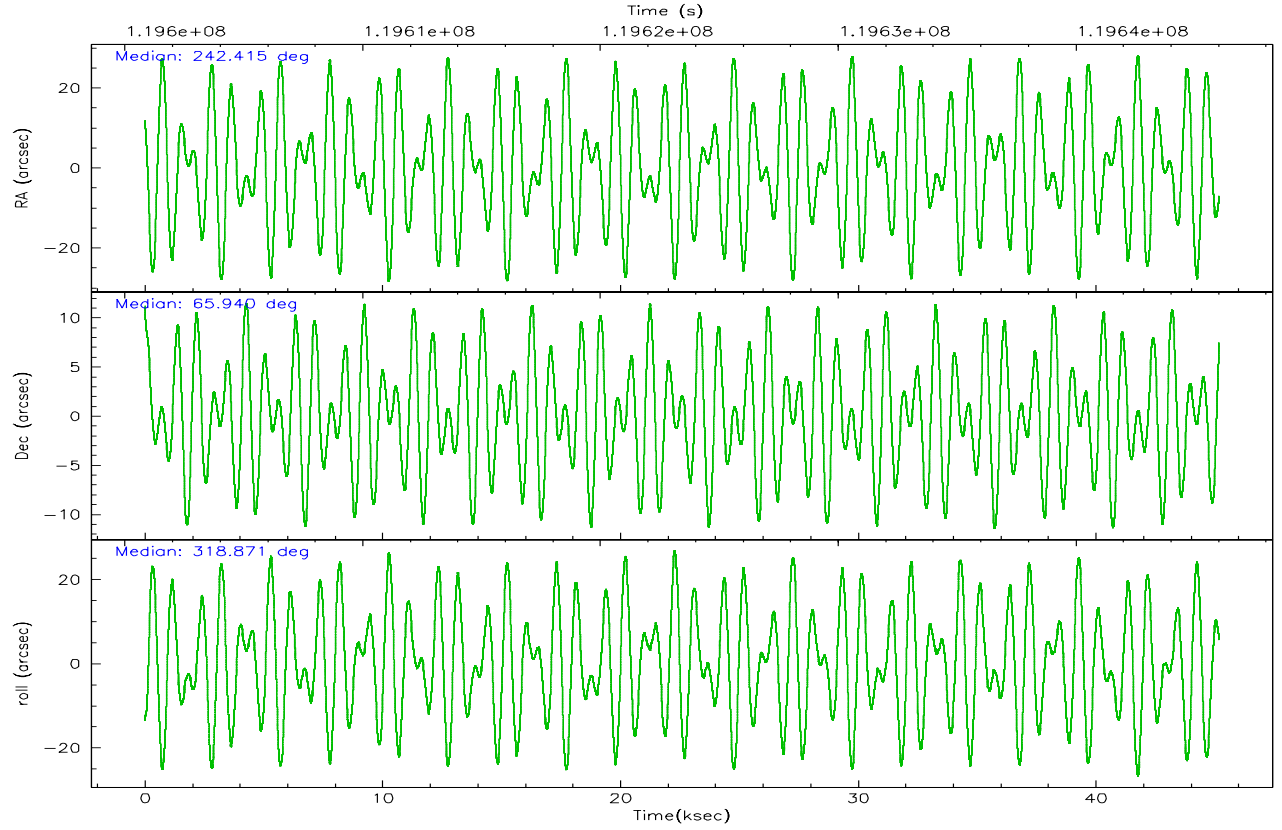
	ccd 2	ccd 3	ccd 5	ccd 6	ccd 7	ccd 8
grade 0 events	13218	12689	34157	12963	14426	22578
	4%	4%	8%	4%	4%	6%
grade 1 events	106	124	1095	102	325	186
	0%	0%	0%	0%	0%	0%
grade 2 events	6525	6082	50405	6516	28809	15167
	2%	2%	12%	2%	8%	4%
grade 3 events	2911	3025	7680	3195	13251	7684
	1%	1%	1%	1%	3%	2%
grade 4 events	2863	2993	7422	3191	13309	7053
	1%	1%	1%	1%	3%	2%
grade 5 events	9557	10491	29171	11861	33708	14789
	3%	3%	7%	4%	9%	4%
grade 6 events	5414	5466	92053	6463	77231	18325
	1%	2%	23%	2%	21%	5%
grade 7 events	235939	221956	177770	230180	170876	263329
	85%	84%	44%	83%	48%	75%

2.2 Compared Parameters

Parameter	Planned	Actual	Parameter	Planned	Actual
Instrument	ACIS	ACIS	Obspar format version number	6	6
Detector	ACIS-235678	ACIS-235678	Obspar file type	PREDICTED	ACTUAL
Grating	NONE	NONE	Obspar update status	NONE	UPDATED
Observation mode	POINTING	POINTING	Number of optional ACIS chips dropped	0	0
Pointing RA	242.349975	242.4157373690618	On-chip summing requested	N	N
Pointing Dec	65.945221	65.94028769229658	Subarray requested	NONE	NONE
Pointing Roll	318.778649	318.875223552278	Alternating exposures requested	N	N
SIM focus pos (mm)	-0.684267	-0.6828225247311905	Primary exposure time	0.000000	3.2
SIM defocus (mm)	0	0.001444936568705701			
SIM translation stage pos (mm)	-190.132523	-190.1425803651734			
SIM translation stage offset (mm)	0	0.01005778216563158			
Observation start time	119601020.184000	119600202.24702			
Observation start date	2001-10-16T06:29:16	2001-10-16T06:16:42			
Observation end time	119646020.184000	119646680.36136			
Observation end date	2001-10-16T18:59:16	2001-10-16T19:11:20			
Read mode	TIMED	TIMED			

2.3 Aspect



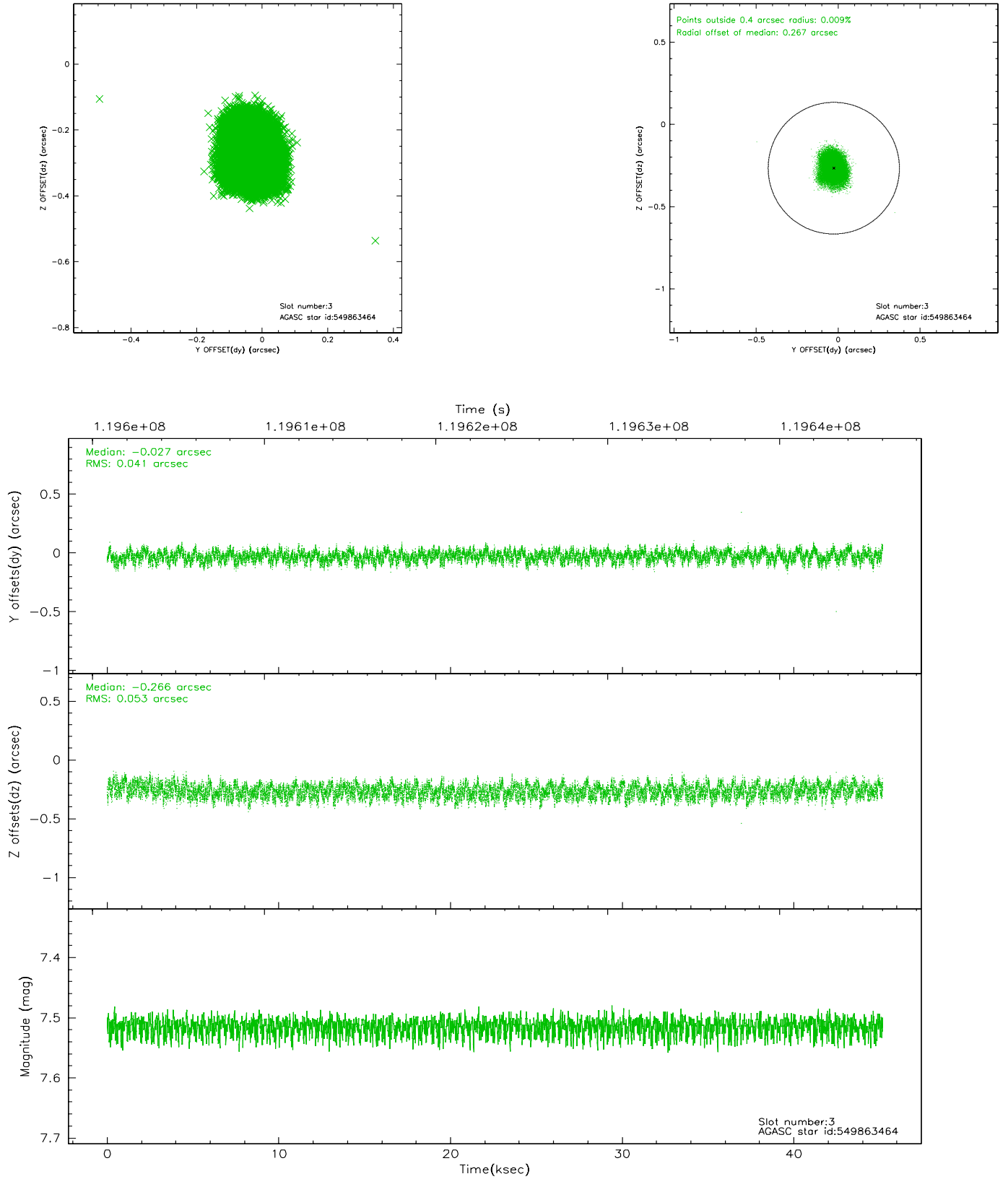


Slot Statistics

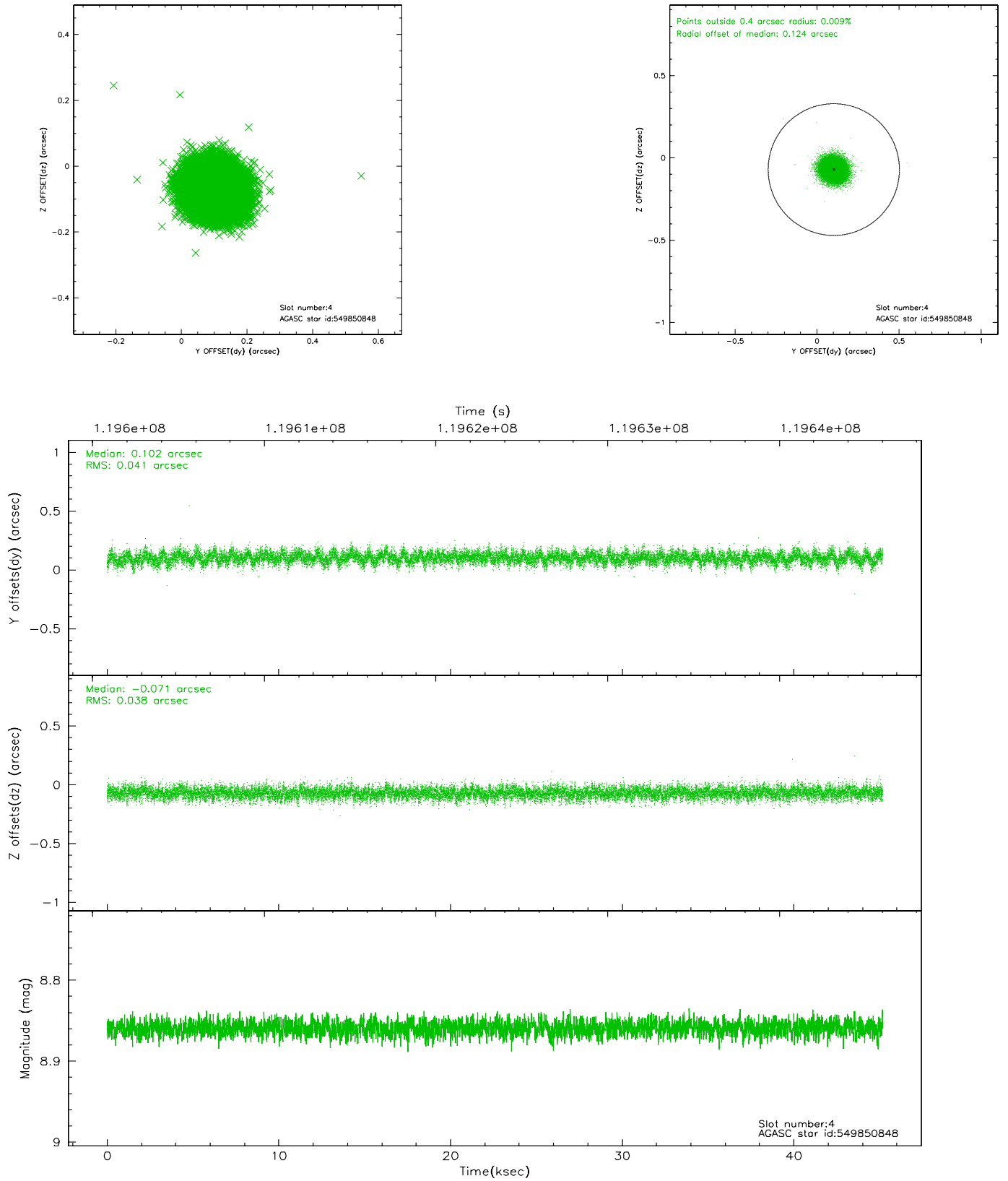
slot	status	id	mag	n_pts	med_dy	med_dz	dr1	dr2	ra	dec	mean_y	mean_z
0	FID	ACIS-S-2	7.11	11019	0.041	0.047	0.007	0.029	0.000000	0.000000	-755.33	-1728.52
1	FID	ACIS-S-4	7.20	11019	-0.057	-0.020	0.007	0.019	0.000000	0.000000	2157.85	179.91
2	FID	ACIS-S-6	7.36	11019	-0.012	-0.019	0.008	0.015	0.000000	0.000000	406.60	817.30
3	GUIDE	549863464	7.51	22039	-0.027	-0.266	0.073	0.113	243.630740	66.376841	353.77	2400.72
4	GUIDE	549850848	8.86	22031	0.102	-0.071	0.059	0.096	241.459219	66.322658	-1869.20	180.78
5	GUIDE	549849656	9.20	22023	0.011	0.095	0.132	0.209	240.650889	65.694358	-1320.08	-2311.98
6	GUIDE	549849376	8.91	22037	-0.012	0.174	0.070	0.113	240.870587	65.717688	-1123.64	-2039.30
7	GUIDE	549857088	9.43	22021	-0.071	0.064	0.105	0.172	244.225588	65.817892	2355.50	1509.54

2.4 Star Slots

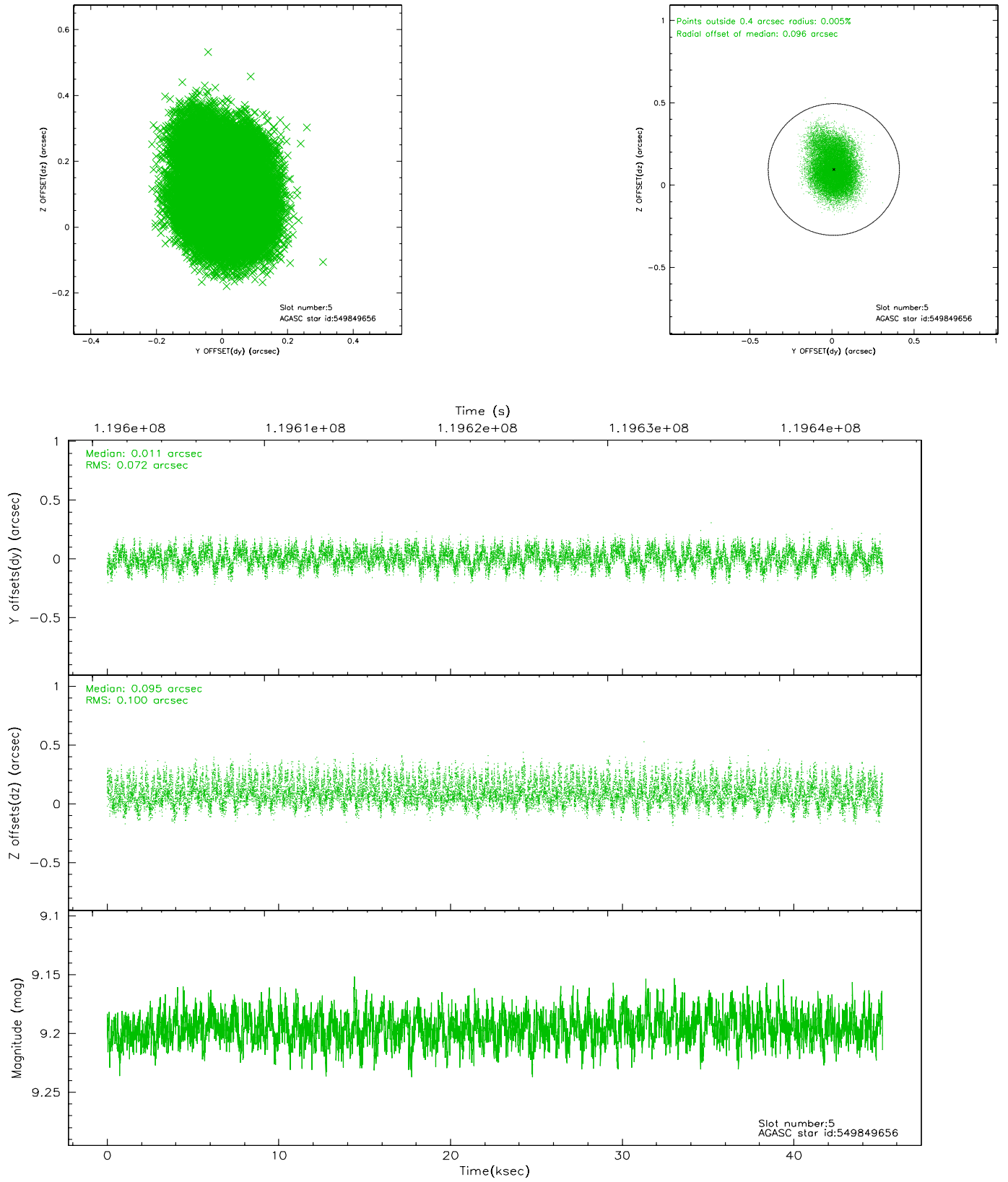
2.4.1 Slot 3



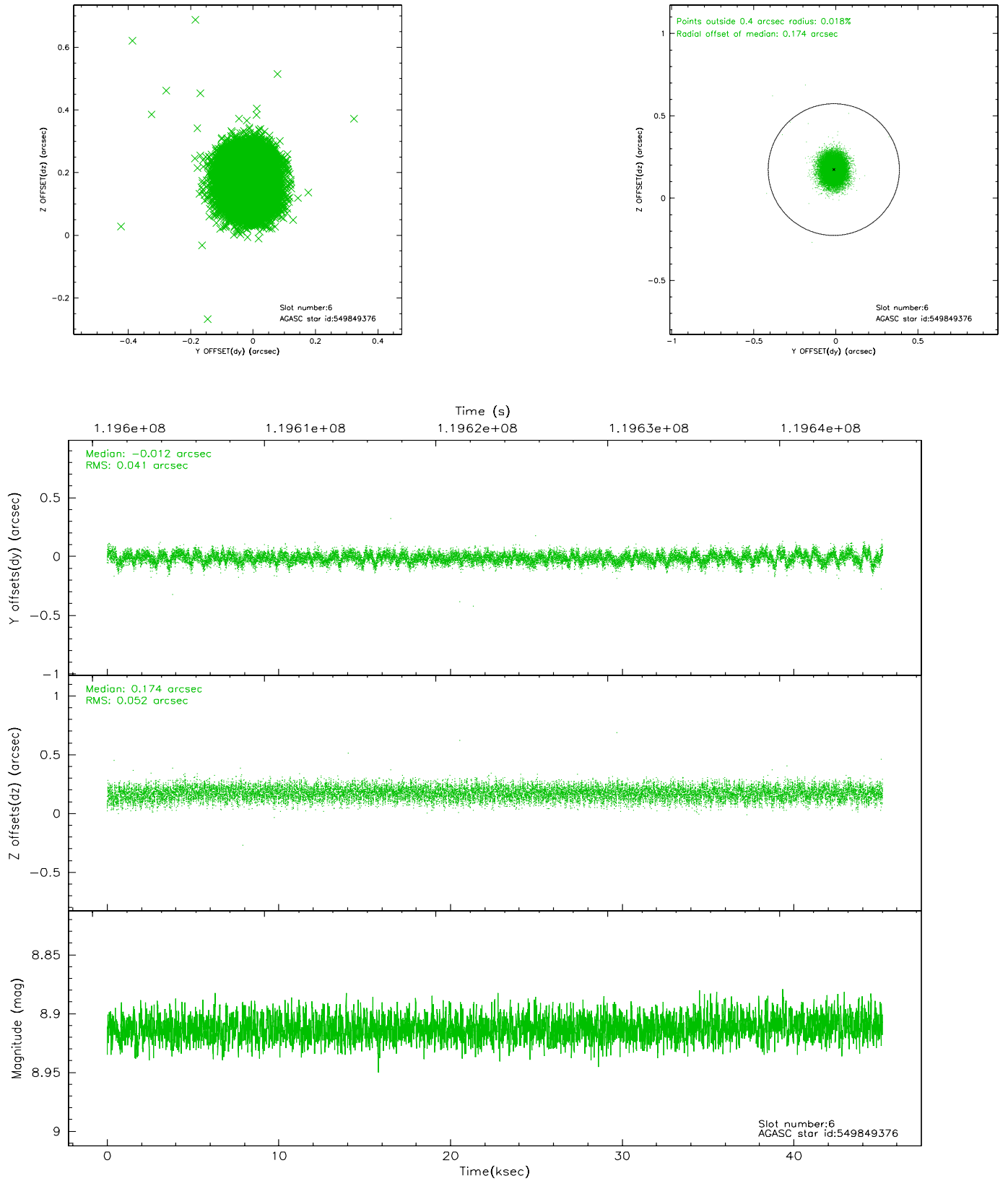
2.4.2 Slot 4



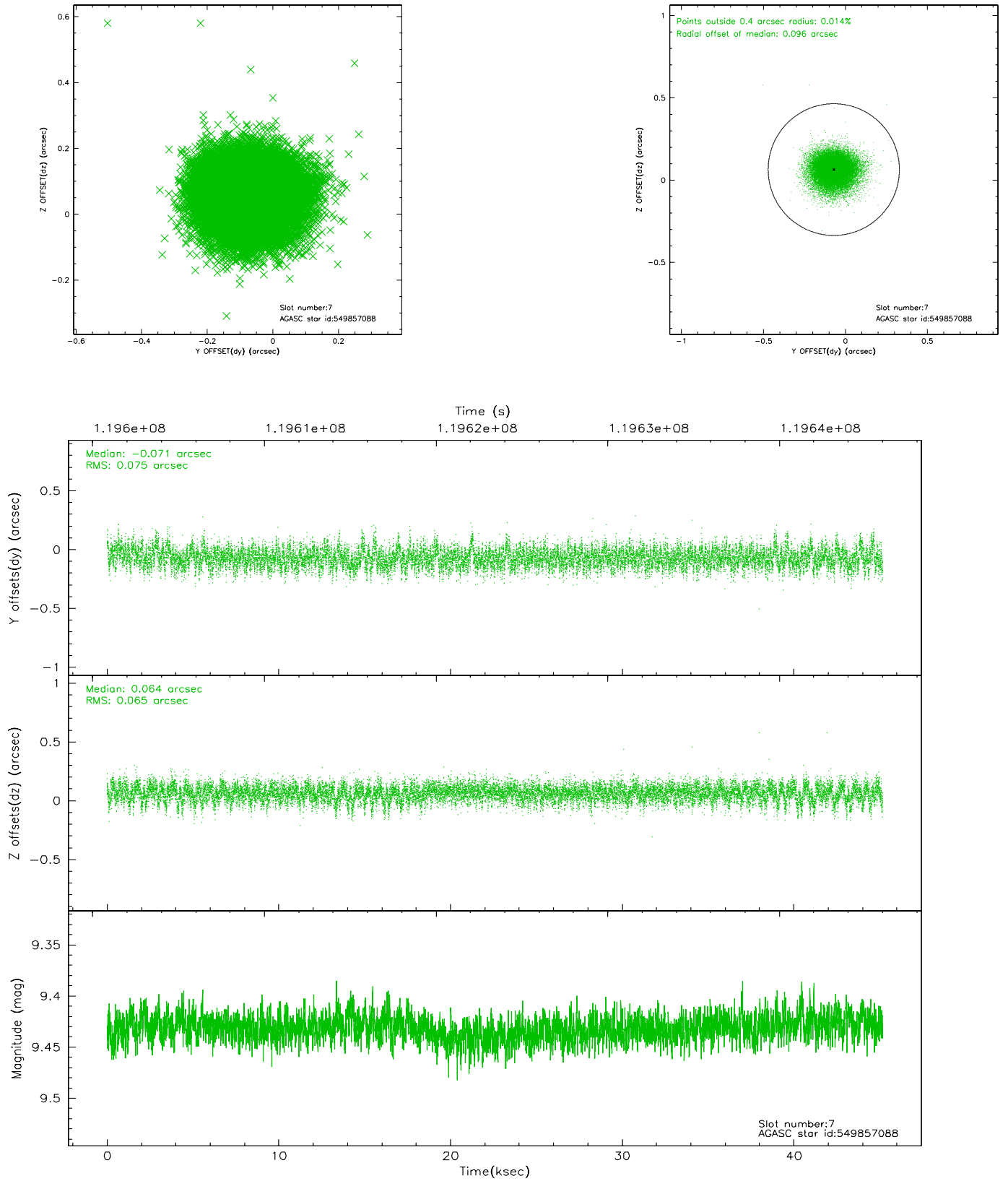
2.4.3 Slot 5



2.4.4 Slot 6

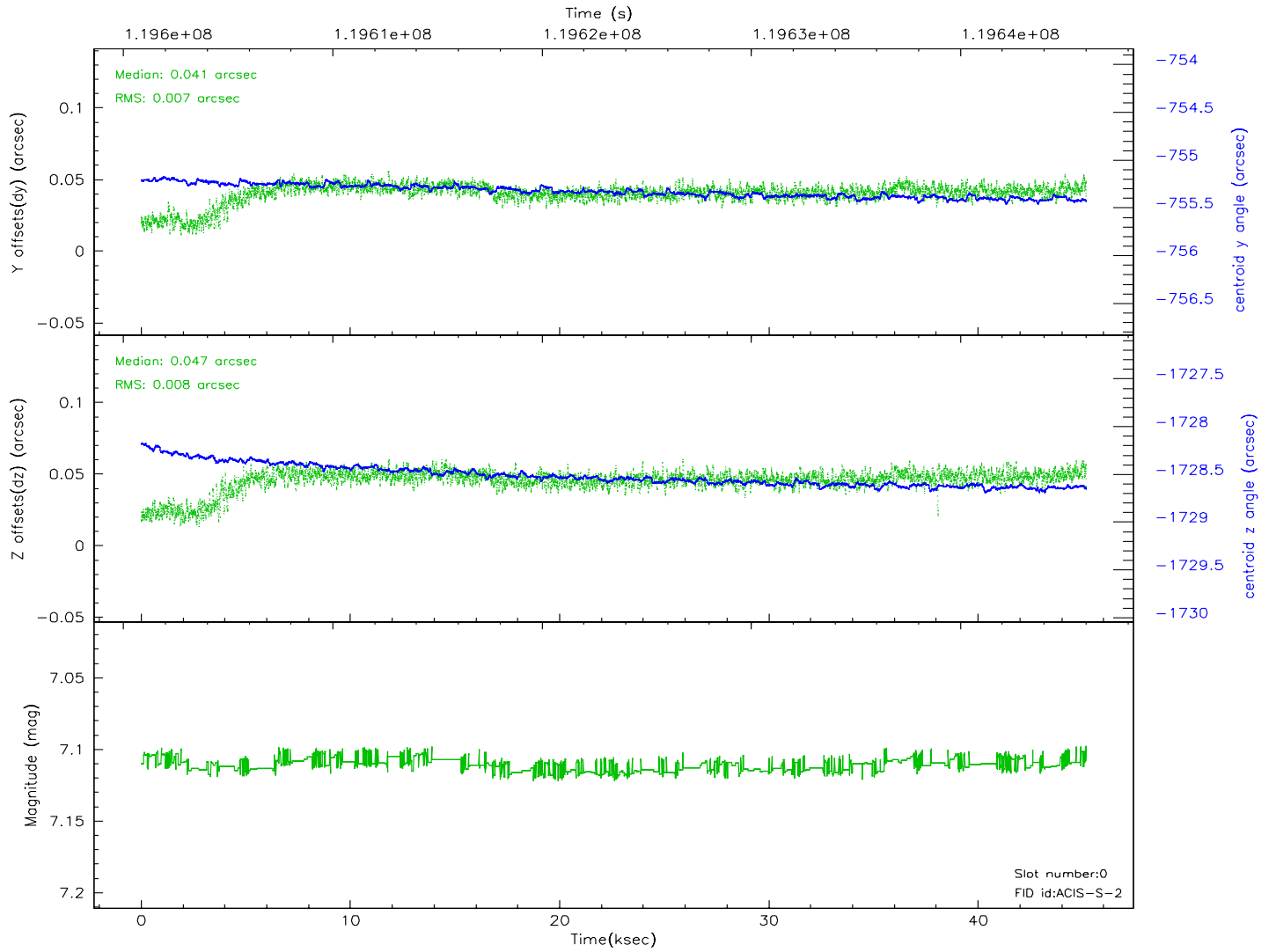
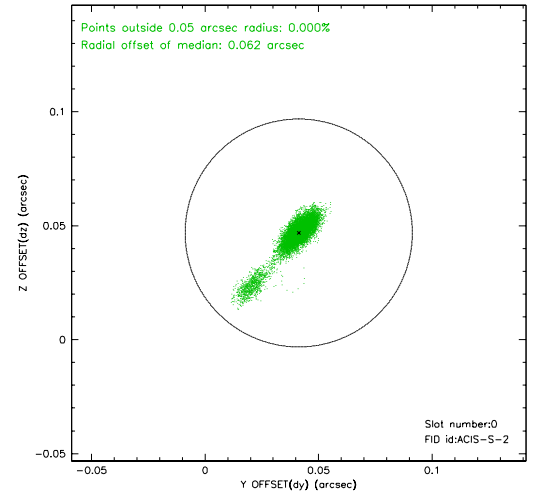
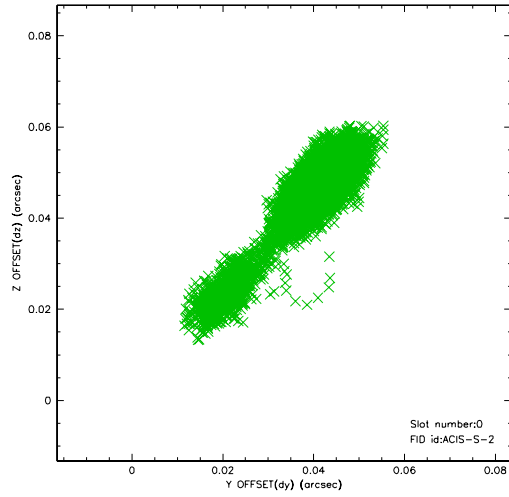


2.4.5 Slot 7

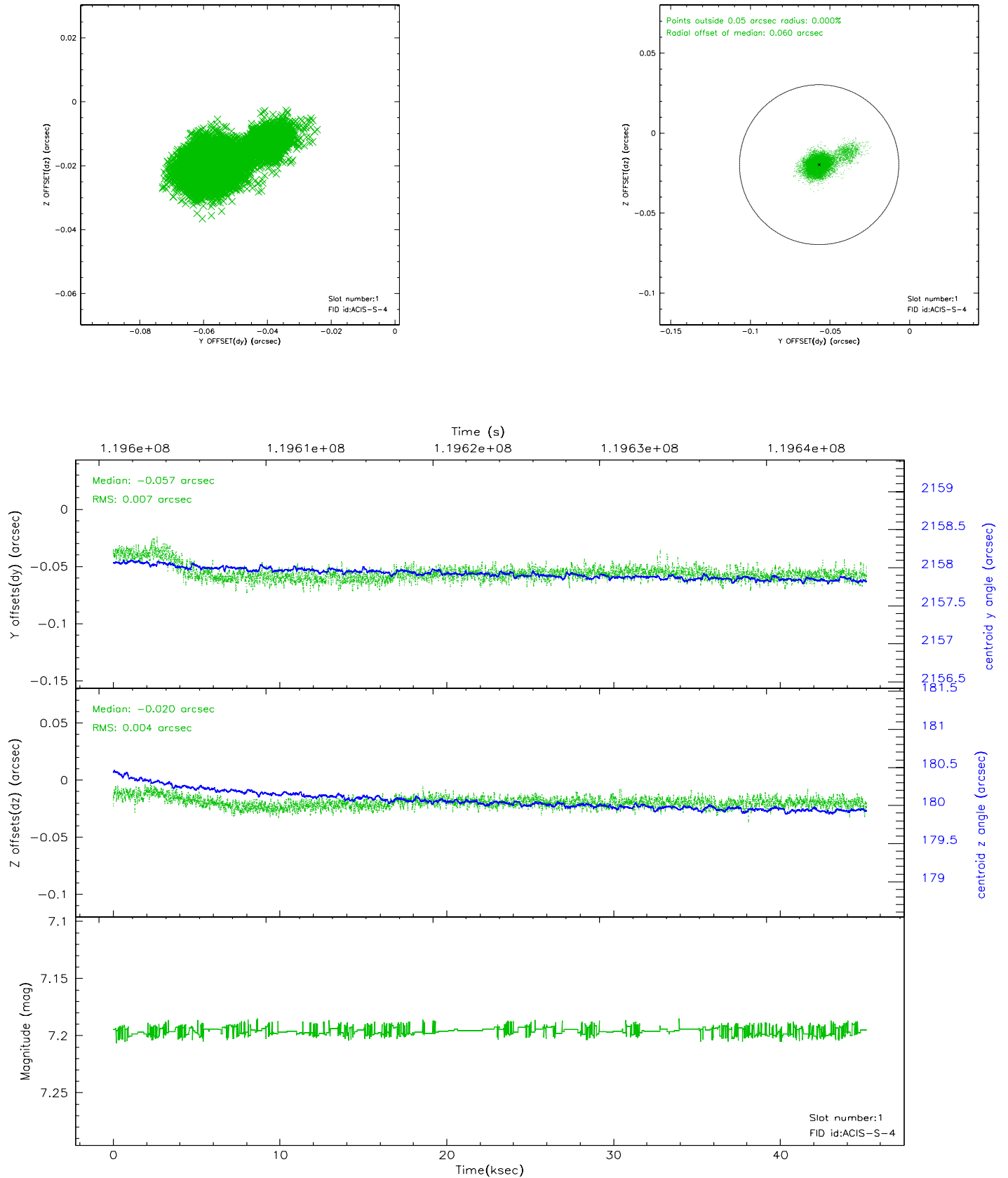


2.5 FID Slots

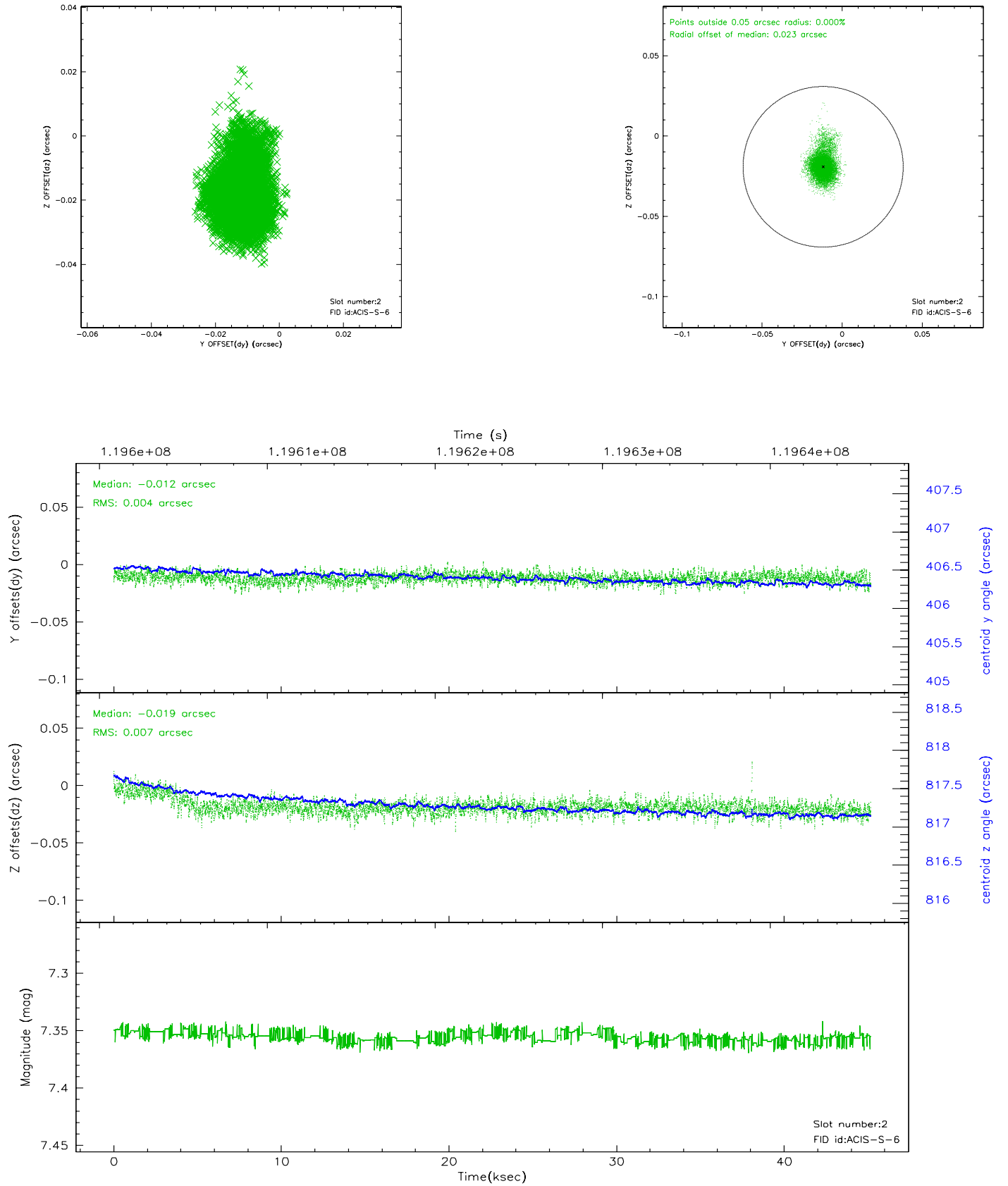
2.5.1 Slot 0



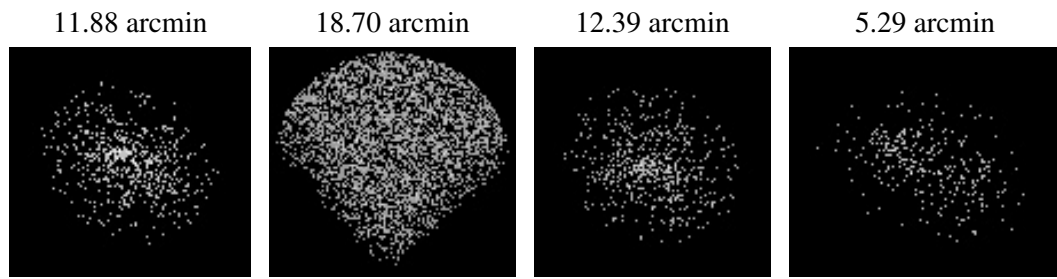
2.5.2 Slot 1



2.5.3 Slot 2



3 Point Sources



A Summary

A.1 Status

V&V Scientist	Beth Sundheim
V&V Date (YYYY-MM-DD)	2007.01.10
V&V Edition	1
V&V Disposition and Status	OK
V&V Charge Time	44.648

A.2 Comments