

# V&V Reference Report

## L2 ASCDS Version : 7.6.9

Observation 2107 - L2 Version 001  
Chandra X-Ray Center

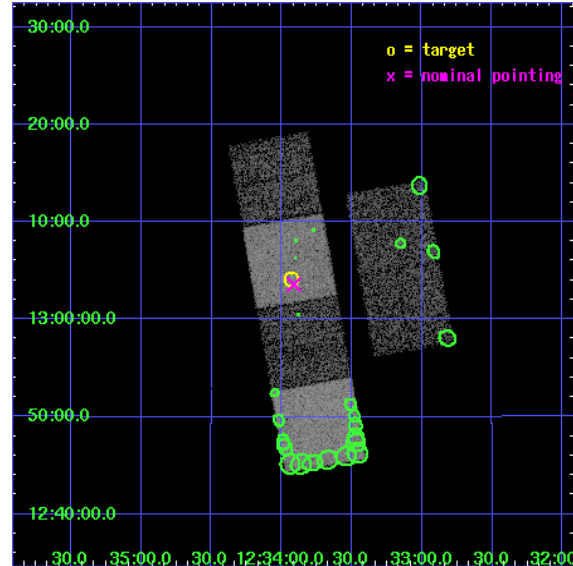
L2 Processing Date : Dec 19 2006

## Contents

<b>1</b>	<b>Front</b>	<b>2</b>
<b>2</b>	<b>OBI</b>	<b>3</b>
2.1	OBI . . . . .	3
2.1.1	Images . . . . .	3
2.1.2	Bias . . . . .	3
2.1.3	Parameters . . . . .	4
2.1.4	Events . . . . .	4
2.2	Compared Parameters . . . . .	5
2.3	Aspect . . . . .	6
2.4	Star Slots . . . . .	9
2.4.1	Slot 3 . . . . .	9
2.4.2	Slot 4 . . . . .	10
2.4.3	Slot 5 . . . . .	11
2.4.4	Slot 6 . . . . .	12
2.4.5	Slot 7 . . . . .	13
2.5	FID Slots . . . . .	14
2.5.1	Slot 0 . . . . .	14
2.5.2	Slot 1 . . . . .	15
2.5.3	Slot 2 . . . . .	16
<b>3</b>	<b>Point Sources</b>	<b>17</b>
<b>A</b>	<b>Summary</b>	<b>18</b>
A.1	Status . . . . .	18
A.2	Comments . . . . .	18

# 1 Front

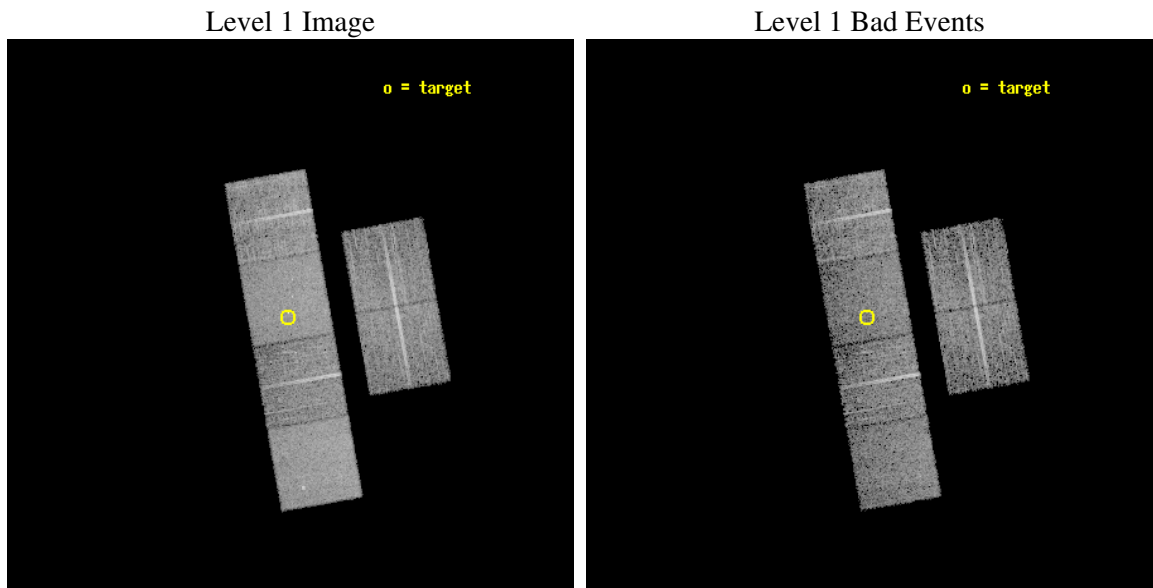
seq_num	700297
obs_id	2107
title	PUBLIC OBSERVATIONS OF A WELL-DEFINED SAMPLE OF BAL QSOS FROM THE LARGE BRIGHT QUASAR SURVEY: REMOVING THE BARRIERS
observer	Prof. William Brandt
object	LBQS 1231+1320
dtcycle	0
cycle	P
ra_targ	188.481667
dec_targ	13.069028
ra_nom	188.47820090415
dec_nom	13.059917822418
roll_nom	259.8967132511
revision	3
ontime	6793.600006327
livetime	6707.5753524321
ontime2	6793.600006327
ontime3	6793.600006327
ontime5	6793.600006327
ontime6	6793.600006327
ontime7	6793.600006327
ontime8	6793.600006327
l2events	72151



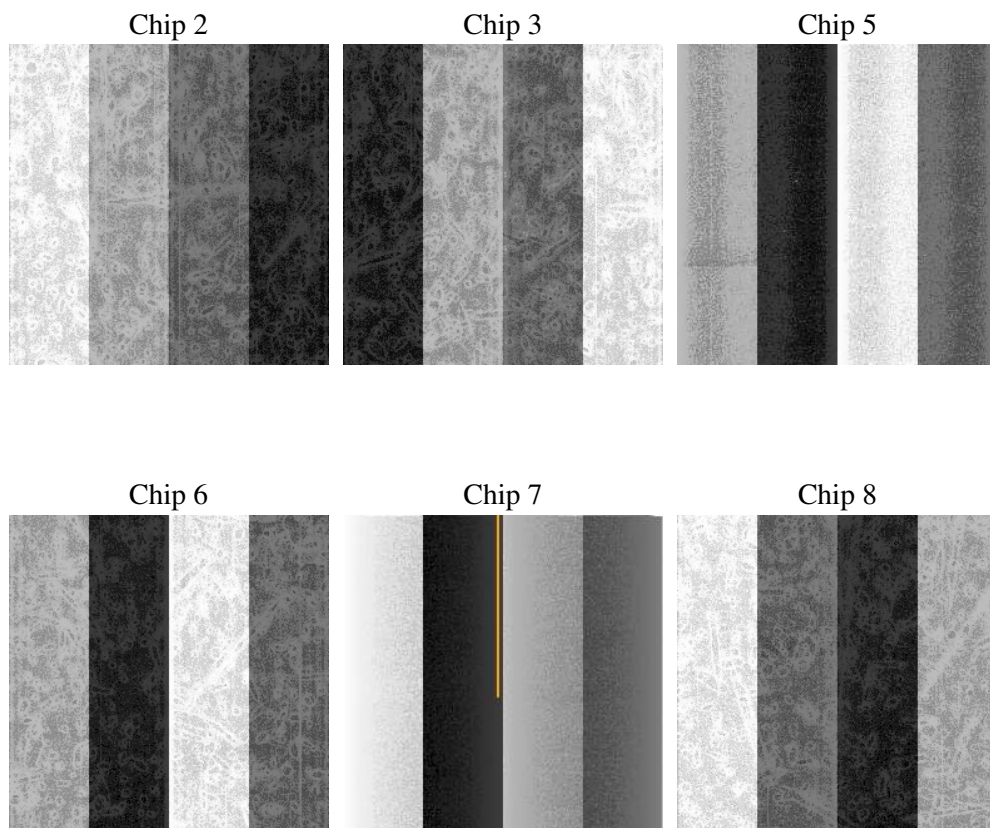
## 2 OBI

### 2.1 OBI

#### 2.1.1 Images



#### 2.1.2 Bias



### 2.1.3 Parameters

obi_num	0
ascdsver	7.6.9
caldbver	3.2.4
date	2006-12-19T10:29:29
revision	3

sched_exp_time	6680.000000
ontime	8585.4049683064
ontime2	8585.4049683064
ontime3	8585.4049683064
ontime5	8585.4049982429
ontime6	8585.4049683064
ontime7	8585.4049683064
ontime8	8585.4049683064
l1events	396908

### 2.1.4 Events

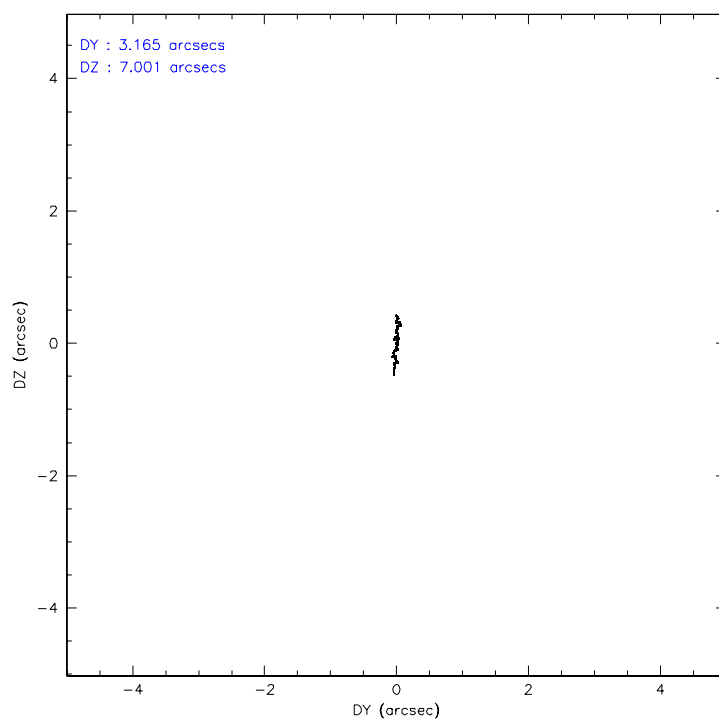
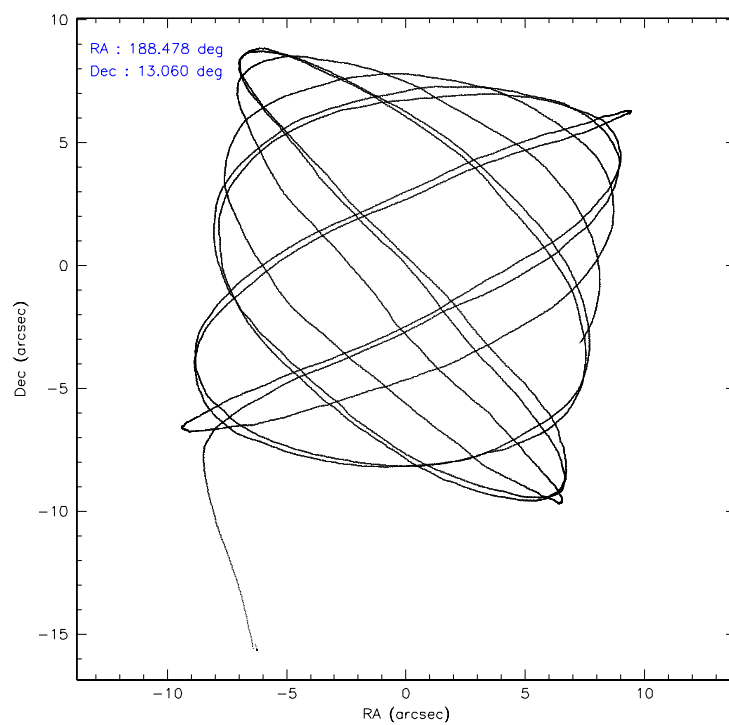
	ccd 2	ccd 3	ccd 5	ccd 6	ccd 7	ccd 8
level 1 events	56808	56359	79954	57820	74035	71932
rejected events	51010	50688	51159	51797	49958	60362
rejected %	89%	89%	63%	89%	67%	83%

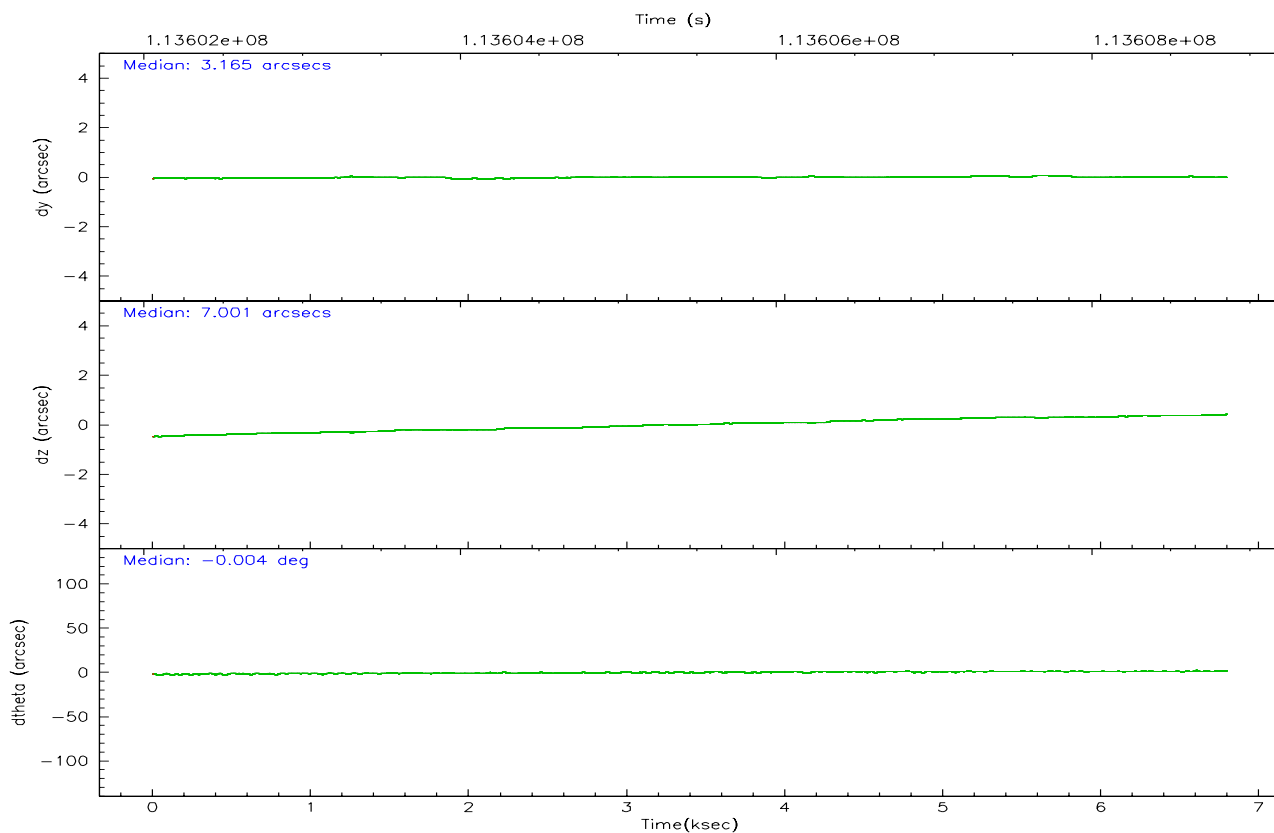
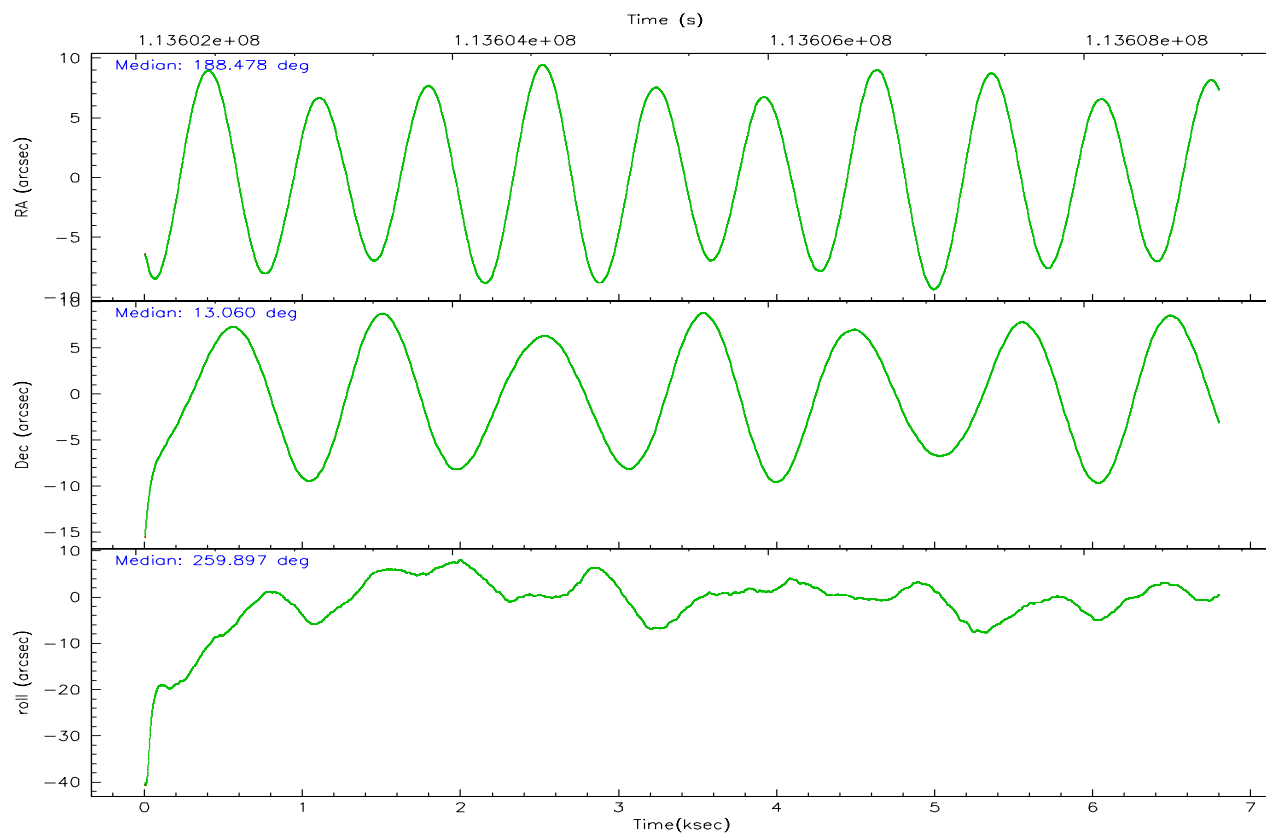
	ccd 2	ccd 3	ccd 5	ccd 6	ccd 7	ccd 8
grade 0 events	3300	3256	3063	3463	2395	4831
	5%	5%	3%	5%	3%	6%
grade 1 events	36	25	52	33	37	45
	0%	0%	0%	0%	0%	0%
grade 2 events	1418	1342	11144	1370	7279	3057
	2%	2%	13%	2%	9%	4%
grade 3 events	593	625	990	649	1637	1533
	1%	1%	1%	1%	2%	2%
grade 4 events	634	651	911	645	1684	1456
	1%	1%	1%	1%	2%	2%
grade 5 events	2080	2163	3884	2445	4940	3029
	3%	3%	4%	4%	6%	4%
grade 6 events	1187	1164	20128	1280	16910	3684
	2%	2%	25%	2%	22%	5%
grade 7 events	47560	47133	39782	47935	39153	54297
	83%	83%	49%	82%	52%	75%

## 2.2 Compared Parameters

Parameter	Planned	Actual	Parameter	Planned	Actual
Instrument	ACIS	ACIS	Obspar format version number	6	6
Detector	ACIS-235678	ACIS-235678	Obspar file type	PREDICTED	ACTUAL
Grating	NONE	NONE	Obspar update status	NONE	UPDATED
Data mode	FAINT	FAINT	Number of optional ACIS chips dropped	0	0
Observation mode	POINTING	POINTING	On-chip summing requested	N	N
Pointing RA	188.468375	188.4782009041463	Subarray requested	NONE	NONE
Pointing Dec	13.085431	13.05991782241836	Alternating exposures requested	N	N
Pointing Roll	259.742362	259.8967132510999	Primary exposure time	0.000000	3.2
SIM focus pos (mm)	-0.684267	-0.6828225247311905			
SIM defocus (mm)	0	0.001444936568705701			
SIM translation stage pos (mm)	-190.132523	-190.1400660498719			
SIM translation stage offset (mm)	0	0.00754346686406393			
Observation start time	113602177.184000	113600217.93475			
Observation start date	2001-08-07T20:08:33	2001-08-07T19:36:57			
Observation end time	113608857.184000	113609213.3351			
Observation end date	2001-08-07T21:59:53	2001-08-07T22:06:53			
Read mode	TIMED	TIMED			

## 2.3 Aspect





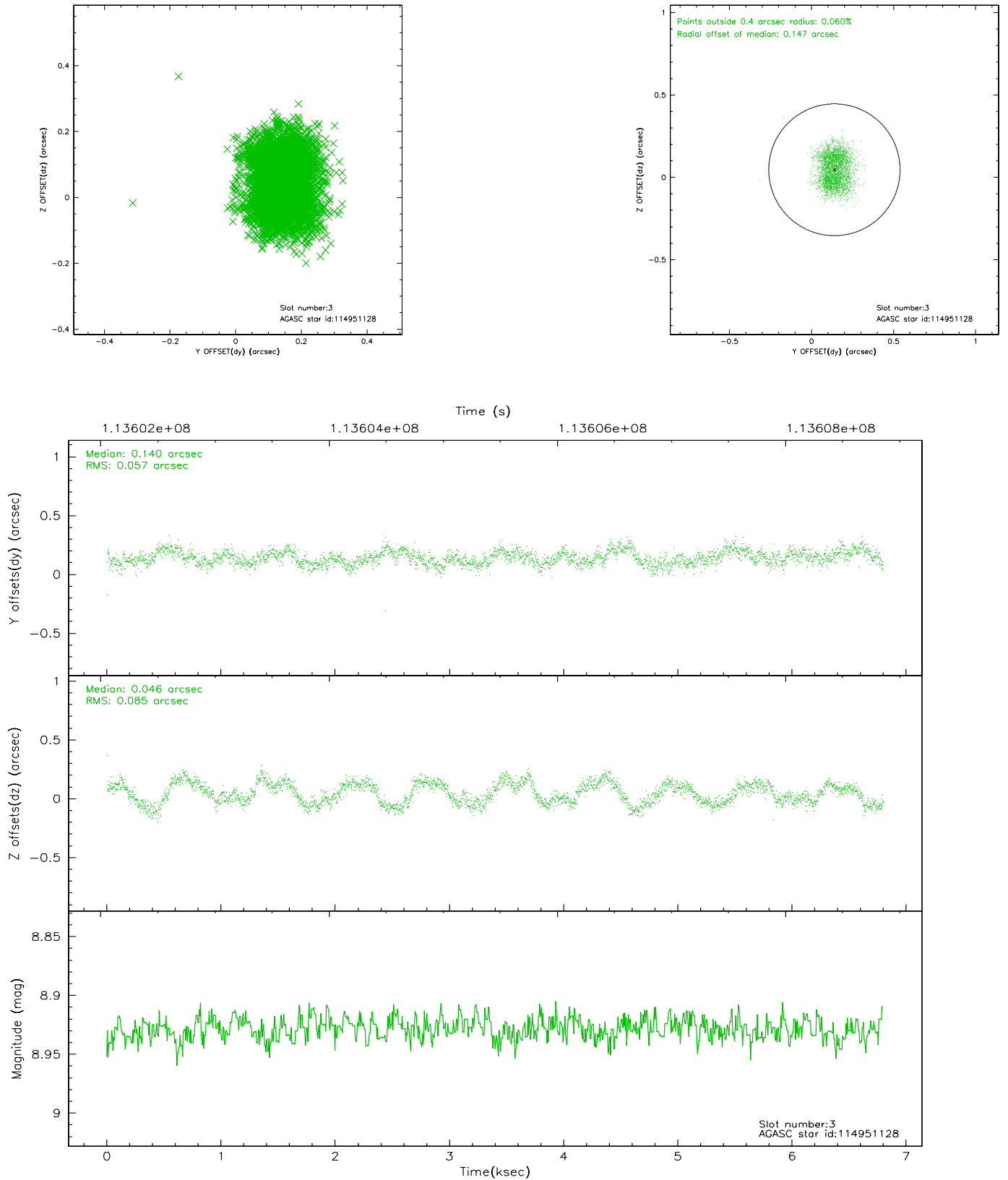
### Slot Statistics

slot	status	id	mag	n_pts	med_dy	med_dz	dr1	dr2	ra	dec	mean_y	mean_z
0	FID	ACIS-S-2	7.12	1659	0.005	0.032	0.010	0.014	0.000000	0.000000	-755.79	-1728.14
1	FID	ACIS-S-4	7.20	1659	-0.089	-0.011	0.006	0.011	0.000000	0.000000	2157.00	179.43
2	FID	ACIS-S-5	7.24	1659	0.052	-0.012	0.008	0.013	0.000000	0.000000	-1807.50	174.06
3	GUIDE	114951128	8.93	3317	0.140	0.046	0.112	0.166	188.719863	12.459246	2060.24	1272.88
4	GUIDE	115349088	9.26	3311	-0.001	0.153	0.320	0.431	188.777694	12.938966	325.15	1163.57
5	GUIDE	115349560	9.87	3316	-0.076	-0.100	0.121	0.192	188.086555	13.583828	-1528.96	-1633.22
6	GUIDE	115348568	10.25	3314	-0.060	-0.027	0.141	0.221	188.076087	13.658173	-1786.57	-1716.87
7	GUIDE	115479688	9.91	3312	-0.007	-0.024	0.206	0.356	188.989208	13.490346	-1761.87	1535.15

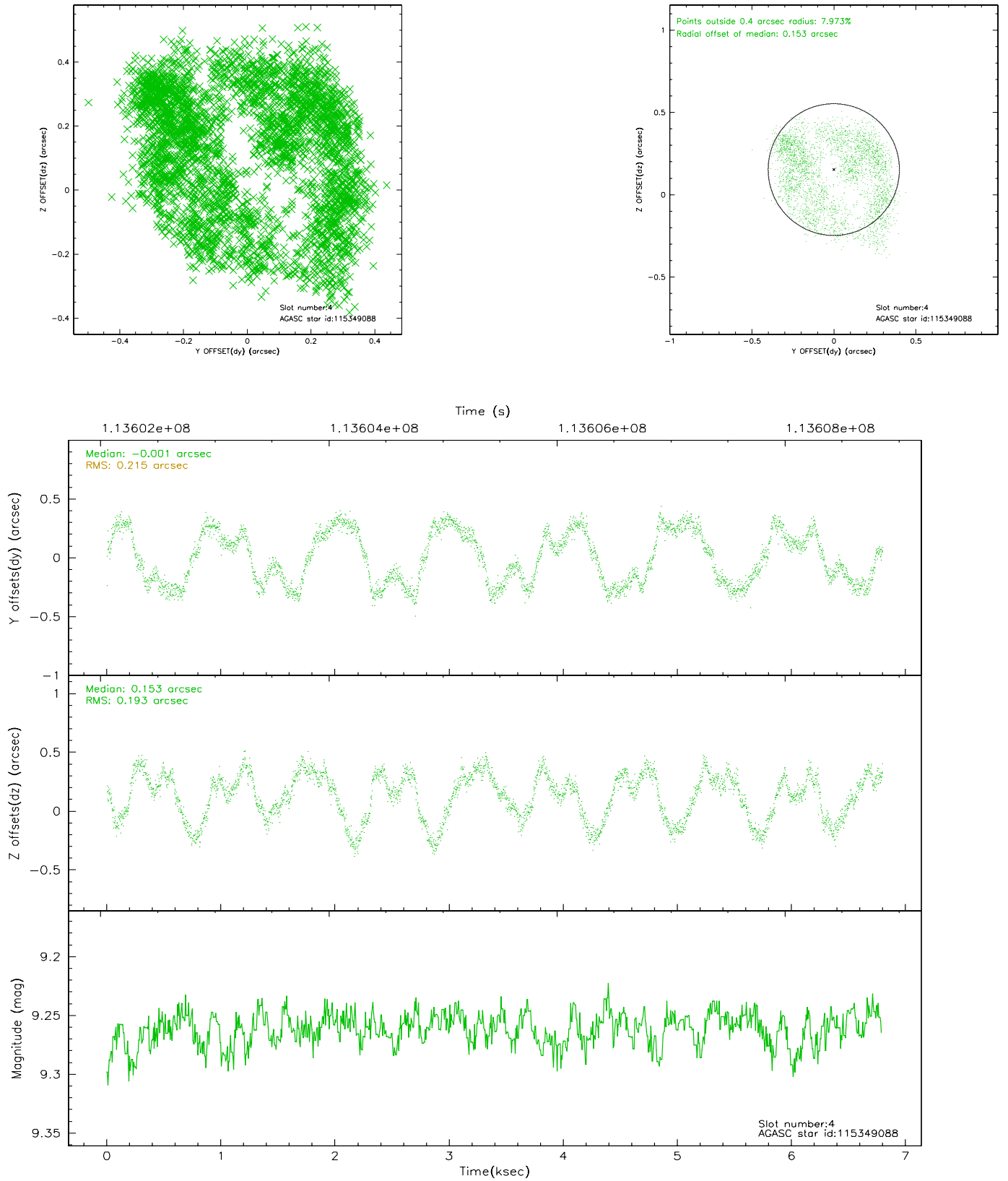


## 2.4 Star Slots

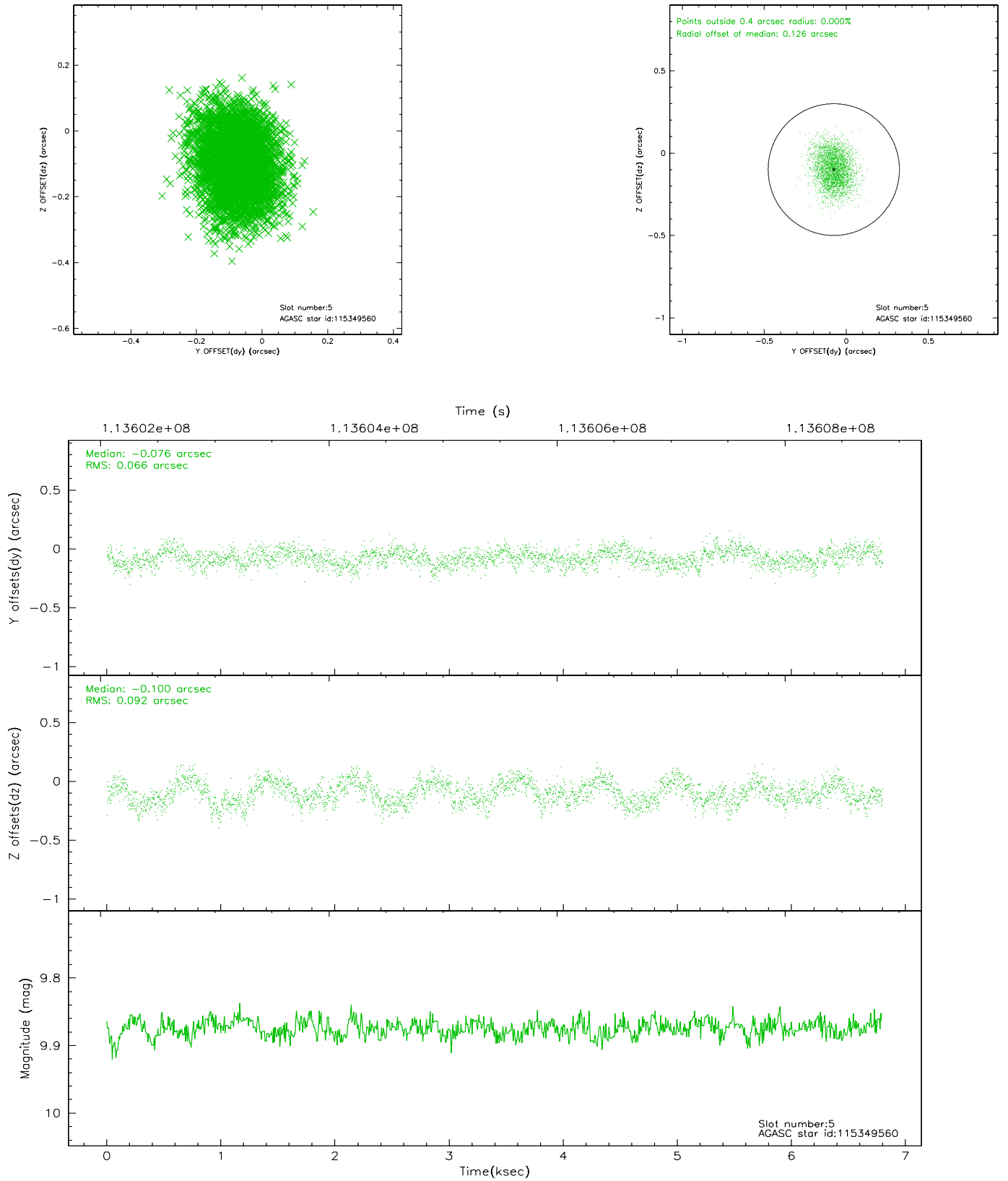
### 2.4.1 Slot 3



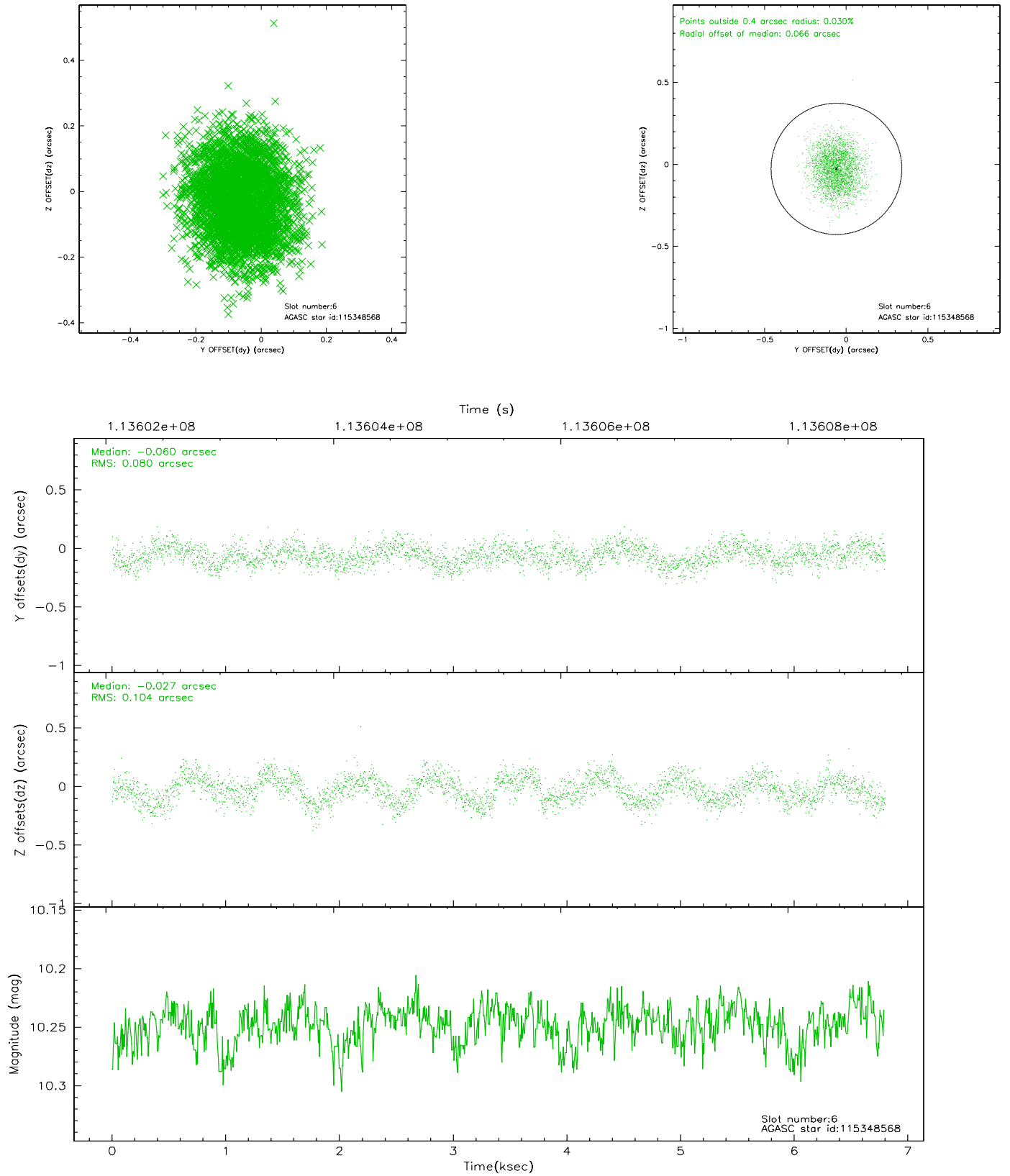
## 2.4.2 Slot 4



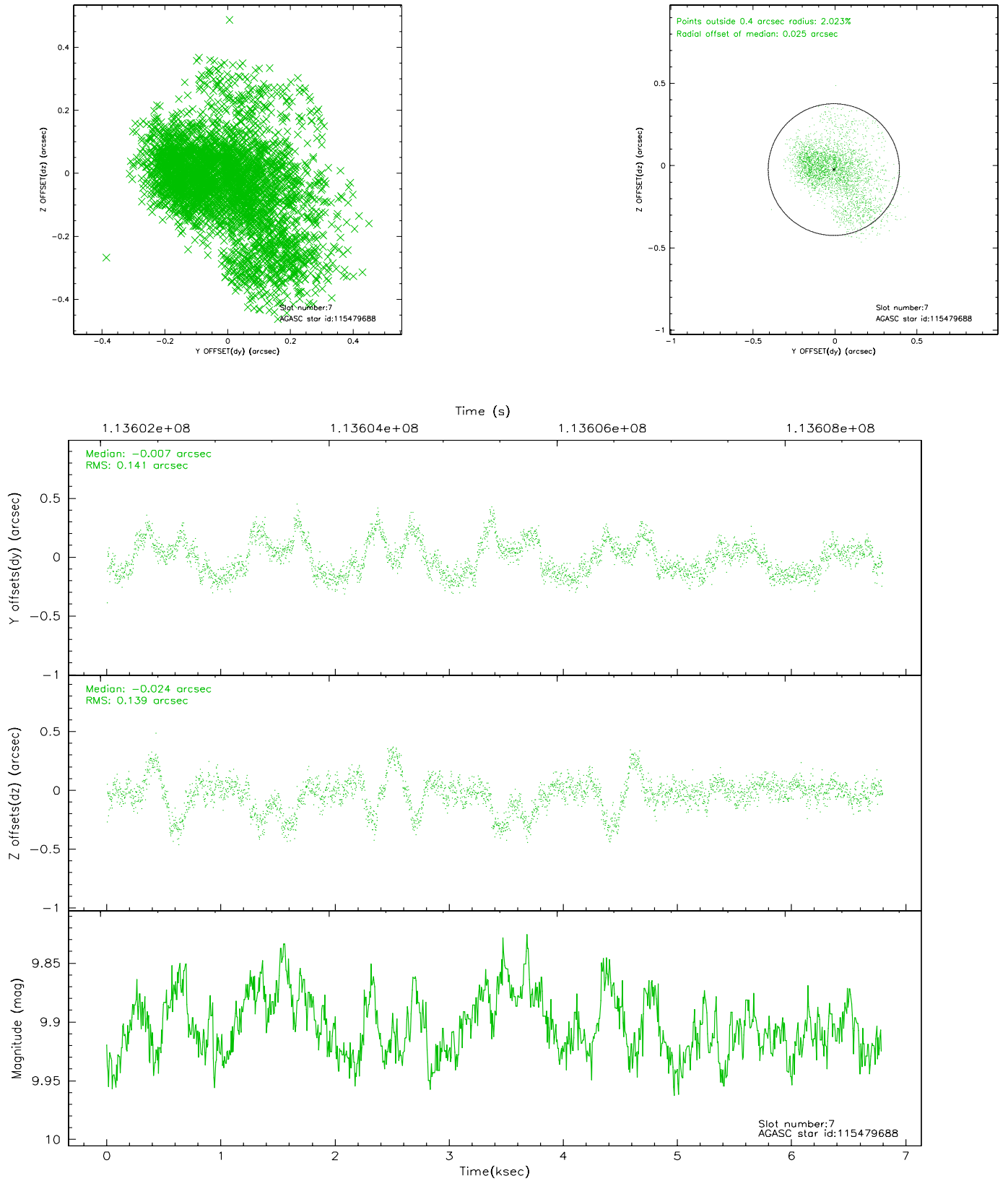
### 2.4.3 Slot 5



## 2.4.4 Slot 6

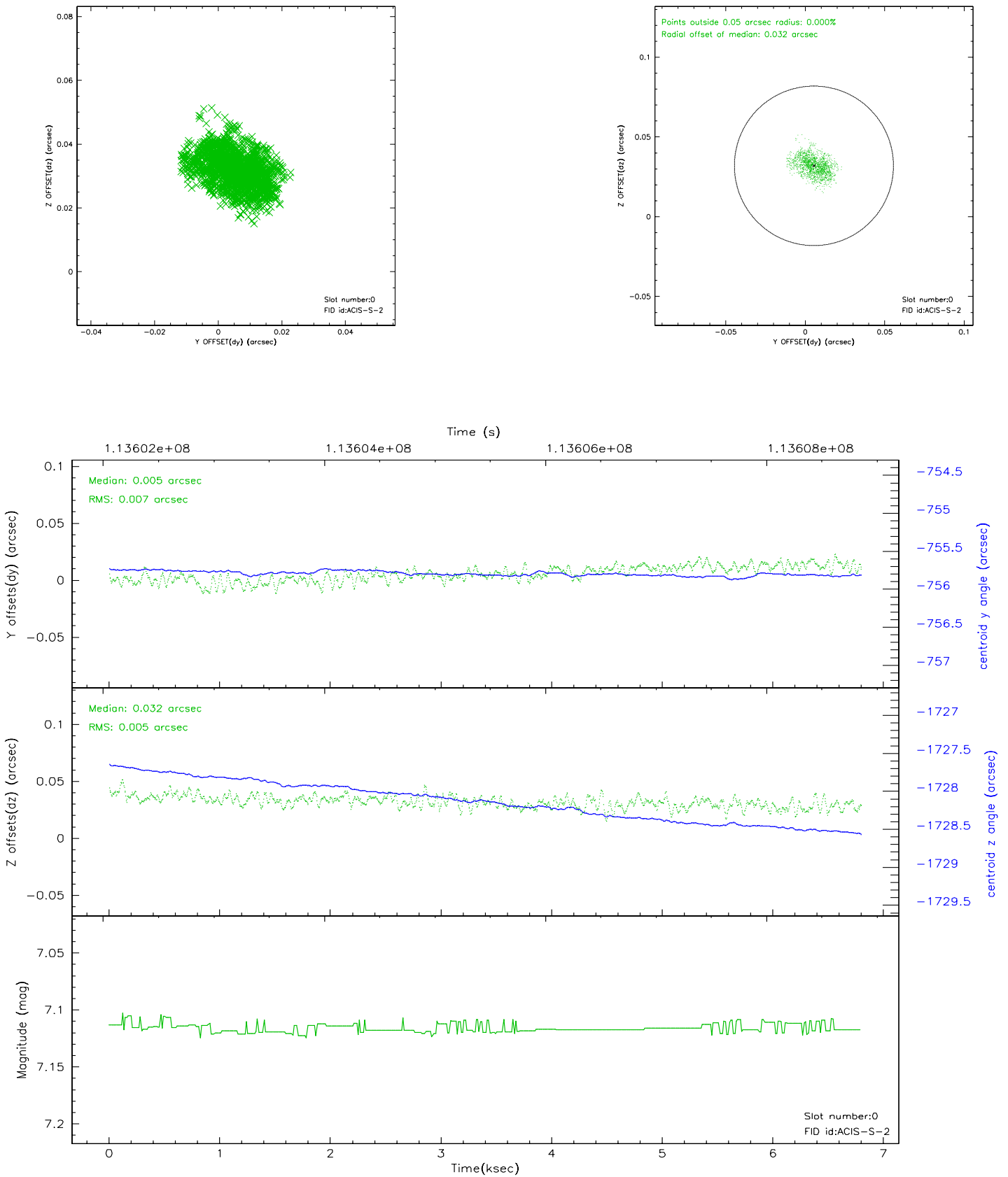


## 2.4.5 Slot 7

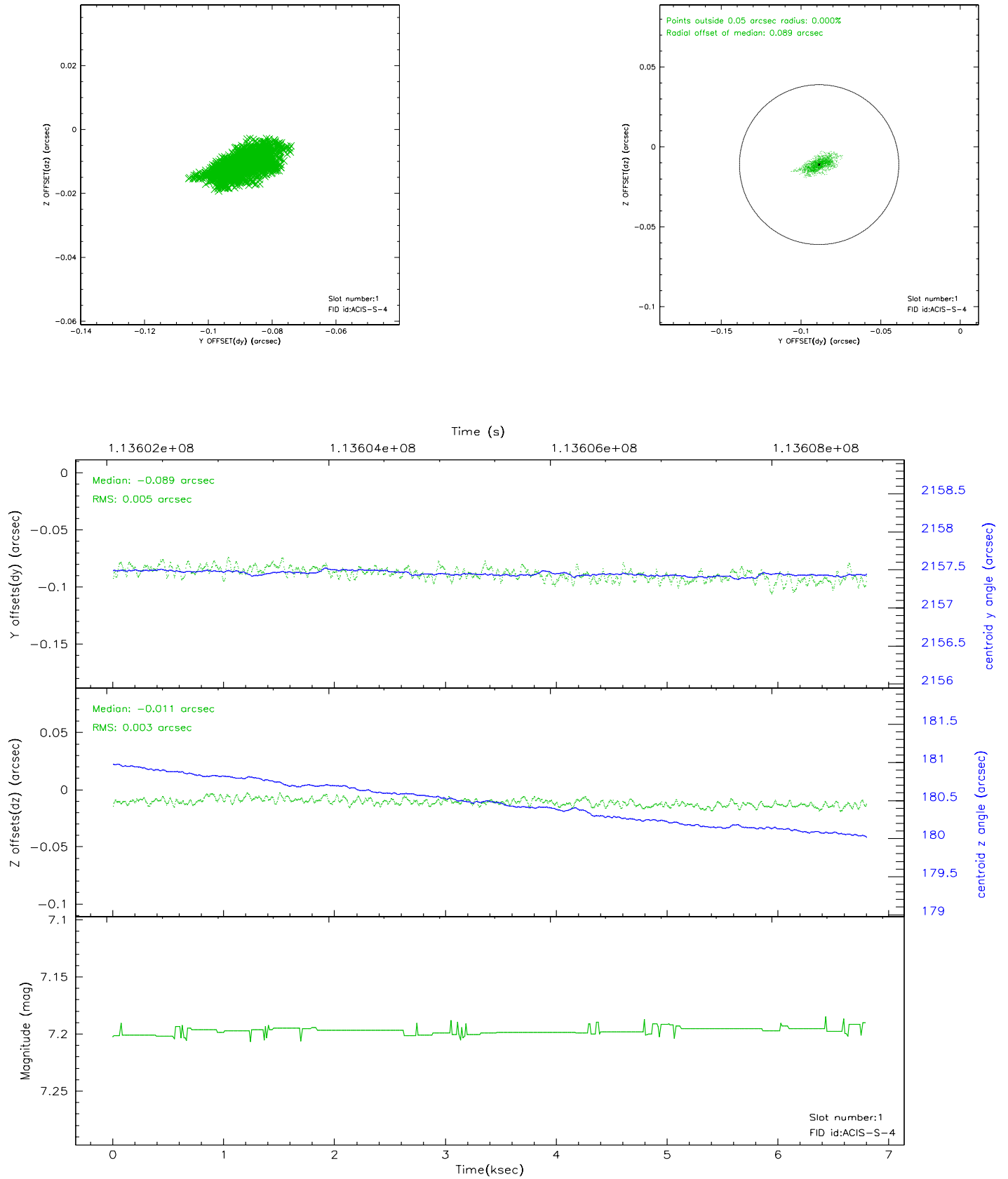


## 2.5 FID Slots

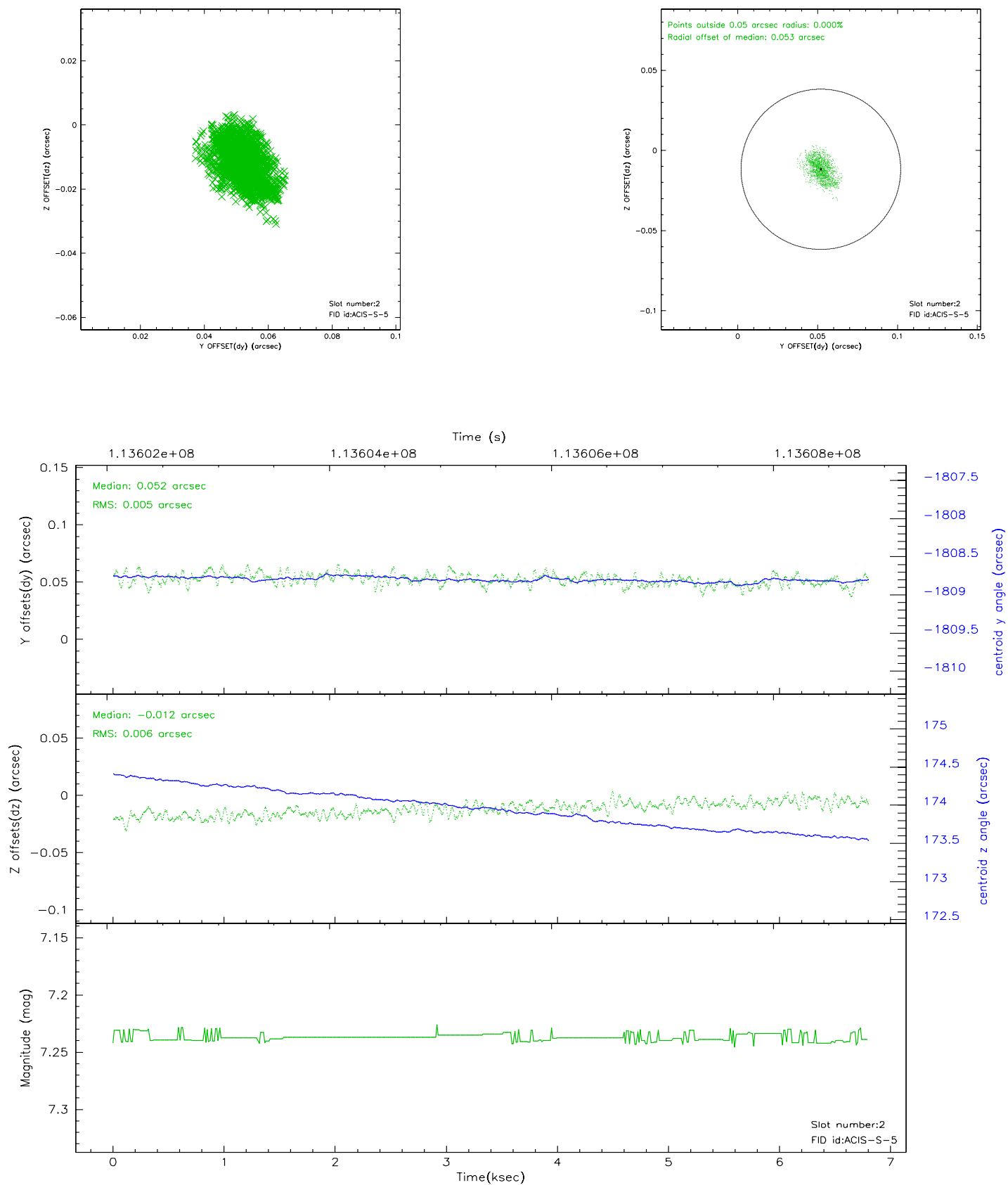
### 2.5.1 Slot 0



## 2.5.2 Slot 1

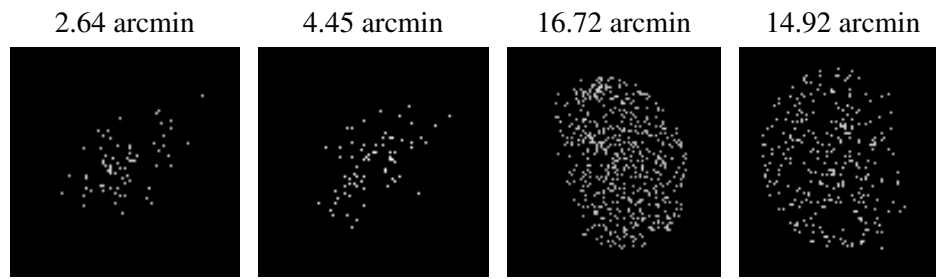


### 2.5.3 Slot 2





### 3 Point Sources



## A Summary

### A.1 Status

V&V Scientist	Jen Lauer
V&V Date (YYYY-MM-DD)	2006.12.19
V&V Edition	1
V&V Disposition and Status	OK
V&V Charge Time	6.794

### A.2 Comments