

V&V Reference Report

L2 ASCDS Version : 7.6.9

Observation 2027 - L2 Version 001
Chandra X-Ray Center

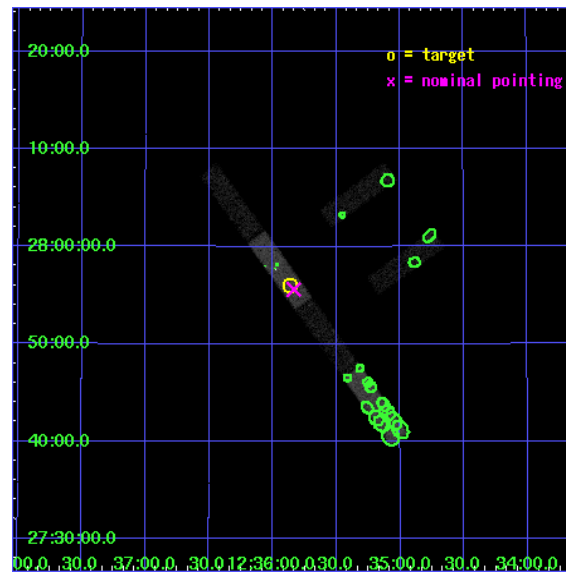
L2 Processing Date : Nov 25 2006

Contents

1	Front	2
2	OBI	3
2.1	OBI	3
2.1.1	Images	3
2.1.2	Bias	3
2.1.3	Parameters	4
2.1.4	Events	4
2.2	Compared Parameters	5
2.3	Aspect	6
2.4	Star Slots	9
2.4.1	Slot 3	9
2.4.2	Slot 4	10
2.4.3	Slot 5	11
2.4.4	Slot 6	12
2.4.5	Slot 7	13
2.5	FID Slots	14
2.5.1	Slot 0	14
2.5.2	Slot 1	15
2.5.3	Slot 2	16
3	Point Sources	17
A	Summary	18
A.1	Status	18
A.2	Comments	18

1 Front

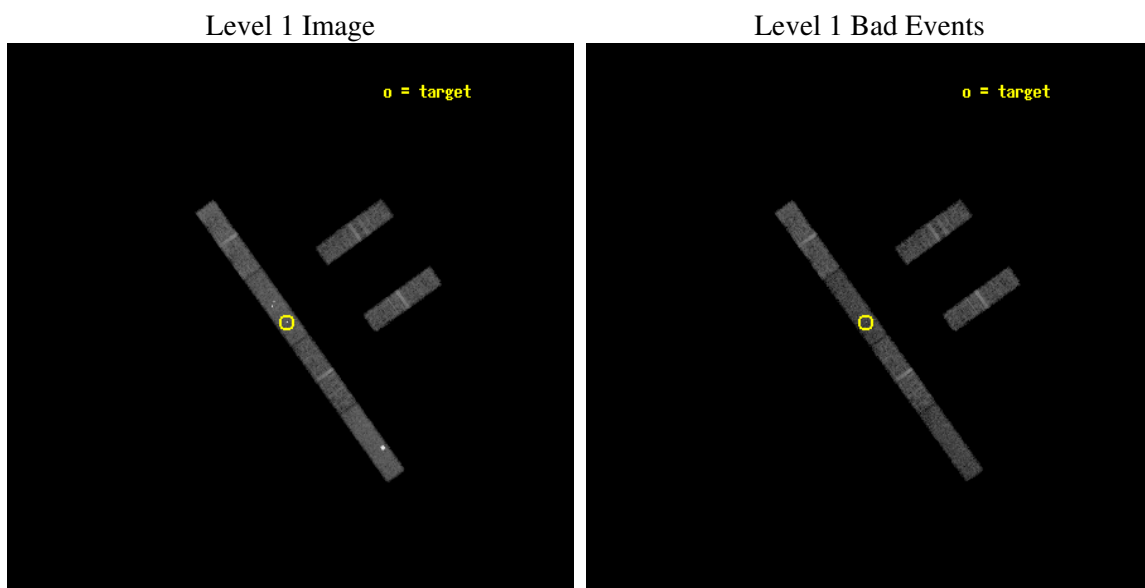
seq_num	600161
obs_id	2027
title	PROBING THE NATURE OF SUPER-LUMINOUS X-RAY SOURCES IN NEARBY GALAXIES
observer	Dr Timothy Roberts
object	NGC 4559 X-1
dtcycle	0
cycle	P
ra_targ	188.966667
dec_targ	27.933611
ra_nom	188.95870396628
dec_nom	27.926826314397
roll_nom	234.2382627682
revision	2
ontime	11106.699939817
livetime	10707.223176925
ontime2	11106.699939817
ontime3	11106.699939817
ontime5	11106.699939817
ontime6	11106.699939817
ontime7	11106.699939817
ontime8	11106.699939817
l2events	32806



2 OBI

2.1 OBI

2.1.1 Images



2.1.2 Bias

Chip 2

Chip 3

Chip 5



Chip 6

Chip 7

Chip 8



2.1.3 Parameters

obi_num	0
ascdsver	7.6.9
caldbver	3.2.4
date	2006-11-25T05:07:31
revision	2

sched_exp_time	10700.000000
ontime	11241.37972787
ontime2	11241.37972787
ontime3	11241.37972787
ontime5	11241.37972787
ontime6	11241.37972787
ontime7	11241.37972787
ontime8	11241.37972787
l1events	163307

2.1.4 Events

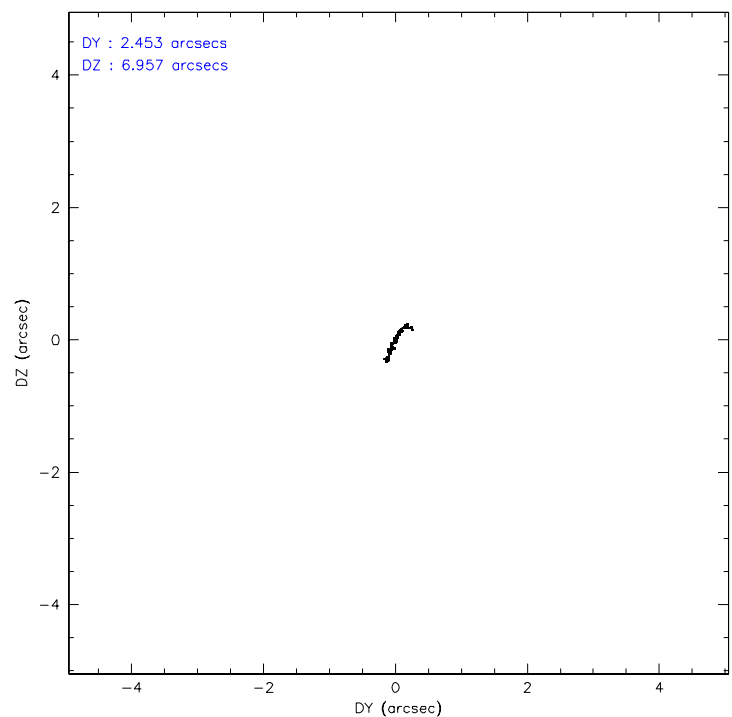
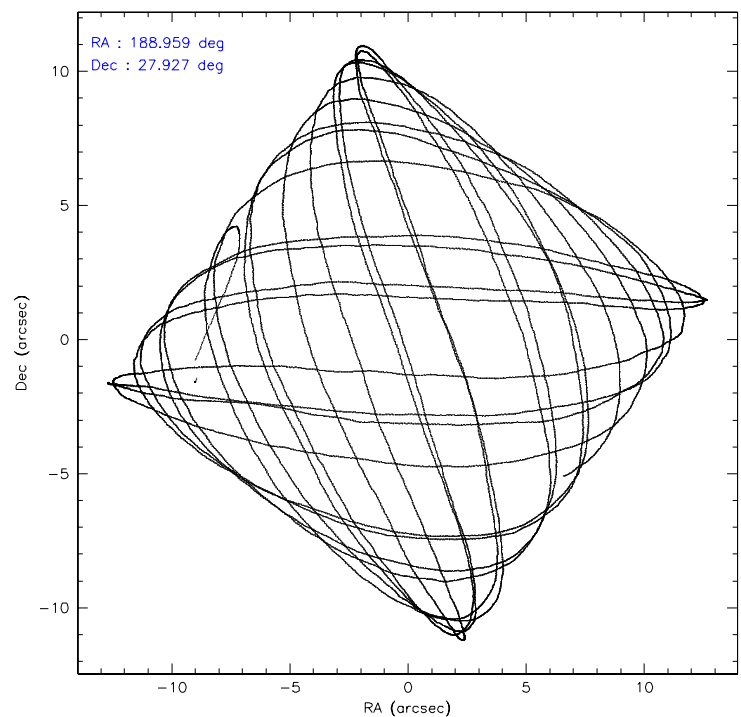
	ccd 2	ccd 3	ccd 5	ccd 6	ccd 7	ccd 8
level 1 events	23759	21807	35410	23062	29279	29990
rejected events	21262	19522	14806	20681	15027	24718
rejected %	89%	89%	41%	89%	51%	82%

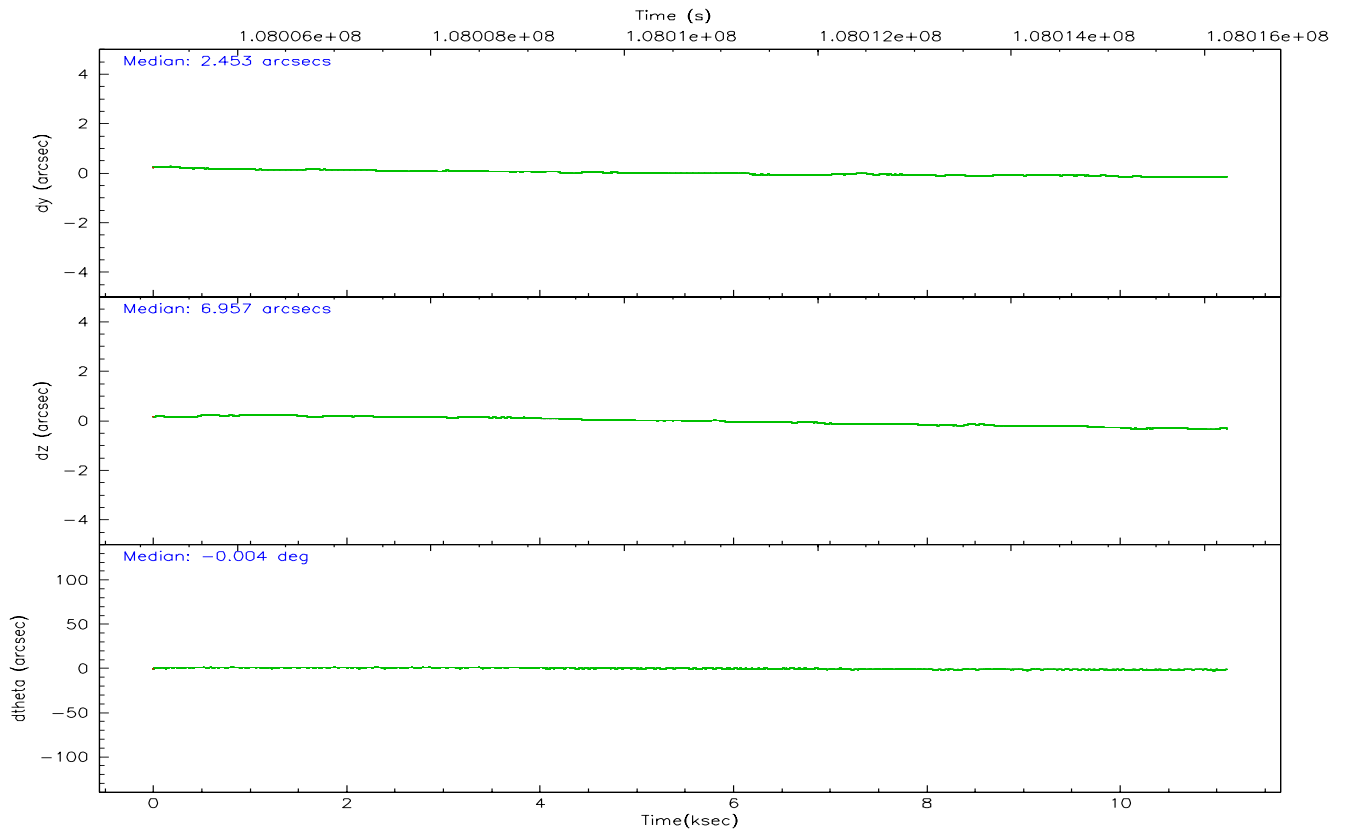
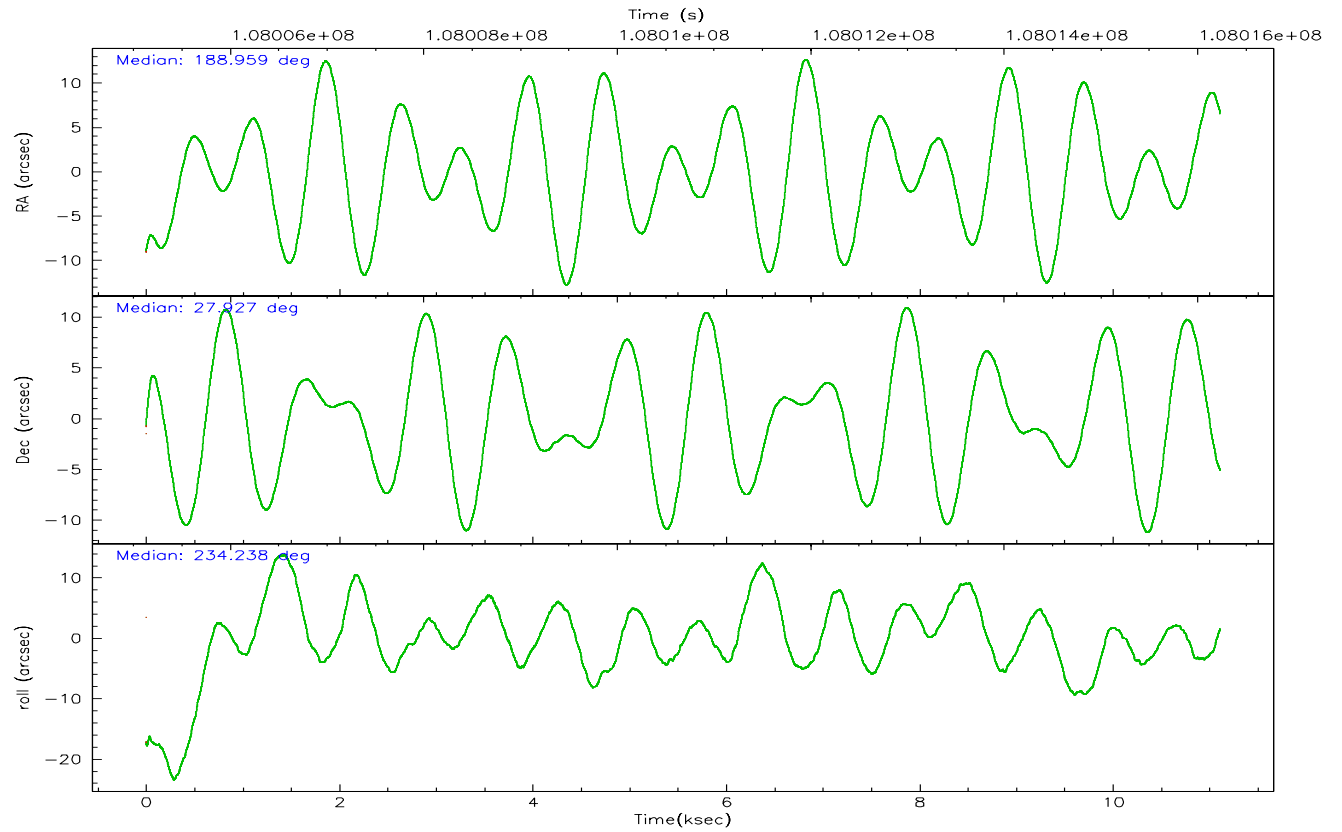
	ccd 2	ccd 3	ccd 5	ccd 6	ccd 7	ccd 8
grade 0 events	953	815	9514	847	2030	1429
	4%	3%	26%	3%	6%	4%
grade 1 events	2	11	29	8	48	8
	0%	0%	0%	0%	0%	0%
grade 2 events	496	411	4076	410	3656	1104
	2%	1%	11%	1%	12%	3%
grade 3 events	335	327	426	370	1223	567
	1%	1%	1%	1%	4%	1%
grade 4 events	340	377	414	352	1201	570
	1%	1%	1%	1%	4%	1%
grade 5 events	725	699	1296	760	1923	959
	3%	3%	3%	3%	6%	3%
grade 6 events	409	374	6426	424	6285	1659
	1%	1%	18%	1%	21%	5%
grade 7 events	20499	18793	13229	19891	12913	23694
	86%	86%	37%	86%	44%	79%

2.2 Compared Parameters

Parameter	Planned	Actual	Parameter	Planned	Actual
Instrument	ACIS	ACIS	Obspar format version number	6	6
Detector	ACIS-235678	ACIS-235678	Obspar file type	PREDICTED	ACTUAL
Grating	NONE	NONE	Obspar update status	NONE	UPDATED
Data mode	FAINT	FAINT	Number of optional ACIS chips dropped	0	0
Observation mode	POINTING	POINTING	On-chip summing requested	N	N
Pointing RA	188.961494	188.9587039662756	Subarray requested	1/4	1/4
Pointing Dec	27.954011	27.92682631439657	Subarray start row	0	385
Pointing Roll	234.080340	234.2382627681986	Subarray row count	1024	256
SIM focus pos (mm)	-0.684267	-0.6828225247311905	Alternating exposures requested	N	N
SIM defocus (mm)	0	0.001444936568705701	Primary exposure time	0.000000	1.1
SIM translation stage pos (mm)	-190.132523	-190.1400660498719			
SIM translation stage offset (mm)	0	0.00754346686406393			
Observation start time	108005534.184000	108004469.55338			
Observation start date	2001-06-04T01:31:10	2001-06-04T01:14:29			
Observation end time	108016234.184000	108017003.76637			
Observation end date	2001-06-04T04:29:30	2001-06-04T04:43:23			
Read mode	TIMED	TIMED			

2.3 Aspect



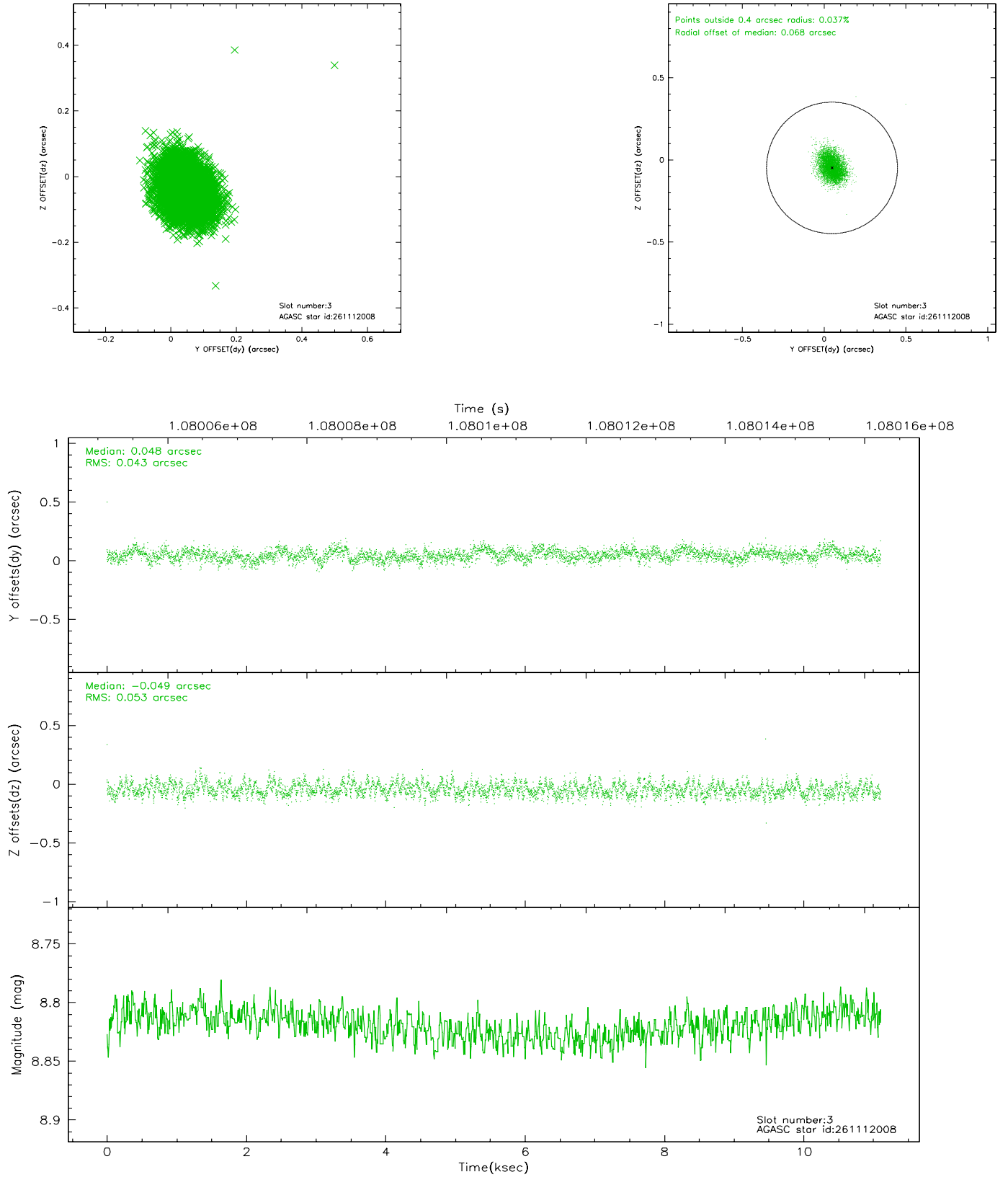


Slot Statistics

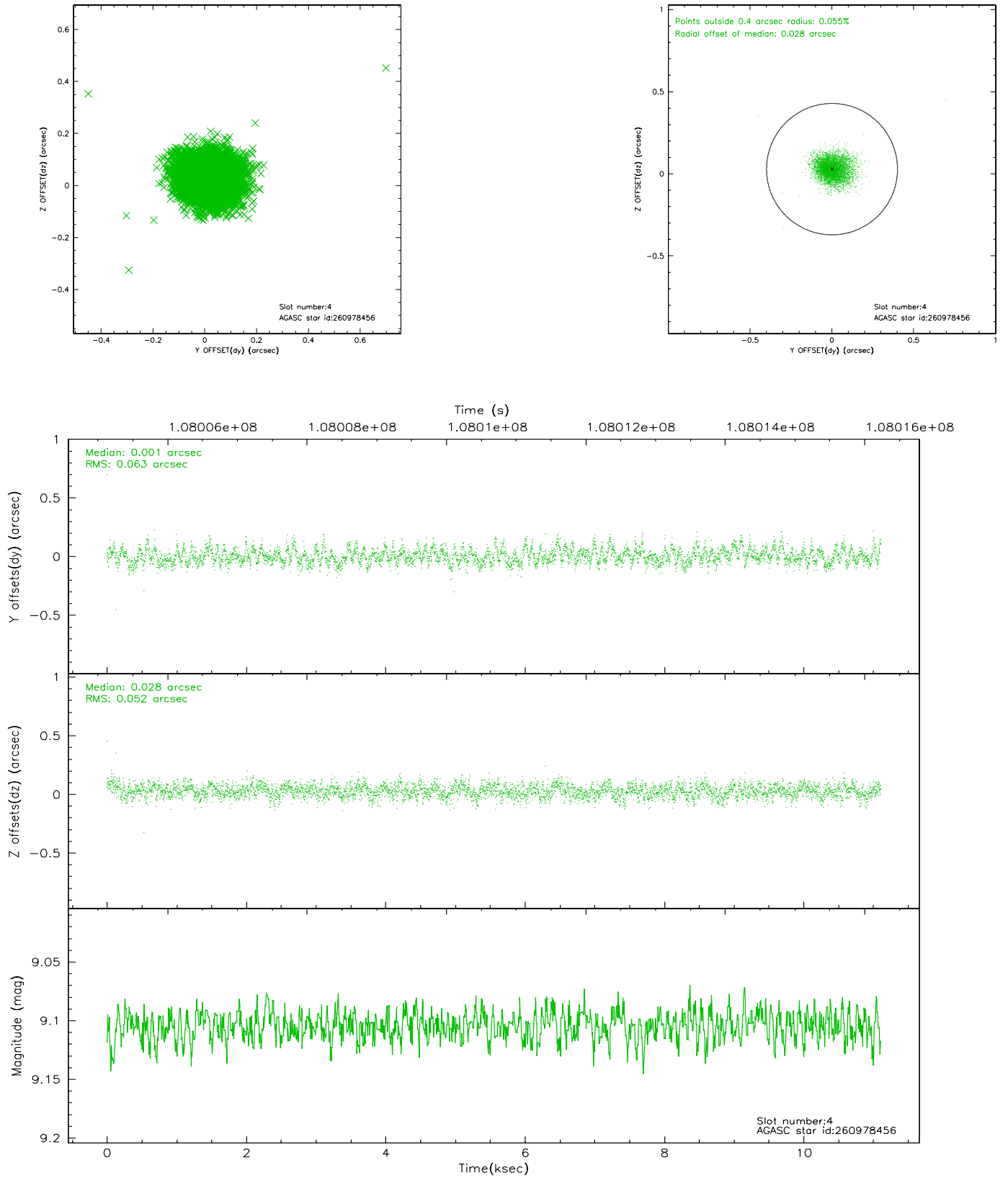
slot	status	id	mag	n_pts	med_dy	med_dz	dr1	dr2	ra	dec	mean_y	mean_z
0	FID	ACIS-S-2	7.11	2709	0.001	0.032	0.018	0.029	0.000000	0.000000	-755.08	-1728.07
1	FID	ACIS-S-4	7.19	2709	-0.098	-0.009	0.023	0.031	0.000000	0.000000	2157.88	179.90
2	FID	ACIS-S-5	7.23	2709	0.066	-0.014	0.008	0.015	0.000000	0.000000	-1807.27	174.08
3	GUIDE	261112008	8.82	5413	0.048	-0.049	0.073	0.116	188.403981	28.081490	664.79	-1705.70
4	GUIDE	260978456	9.10	5416	0.001	0.028	0.084	0.139	188.114307	28.084615	1191.41	-2460.66
5	GUIDE	261097656	9.10	5410	0.129	0.094	0.074	0.121	188.726234	27.455627	1894.52	443.16
6	GUIDE	261101336	9.32	5332	-0.019	-0.057	0.084	0.139	188.594392	28.320780	-387.08	-1717.66
7	GUIDE	261105480	9.36	5414	-0.163	-0.017	0.070	0.113	188.978850	28.694918	-2191.67	-1520.76

2.4 Star Slots

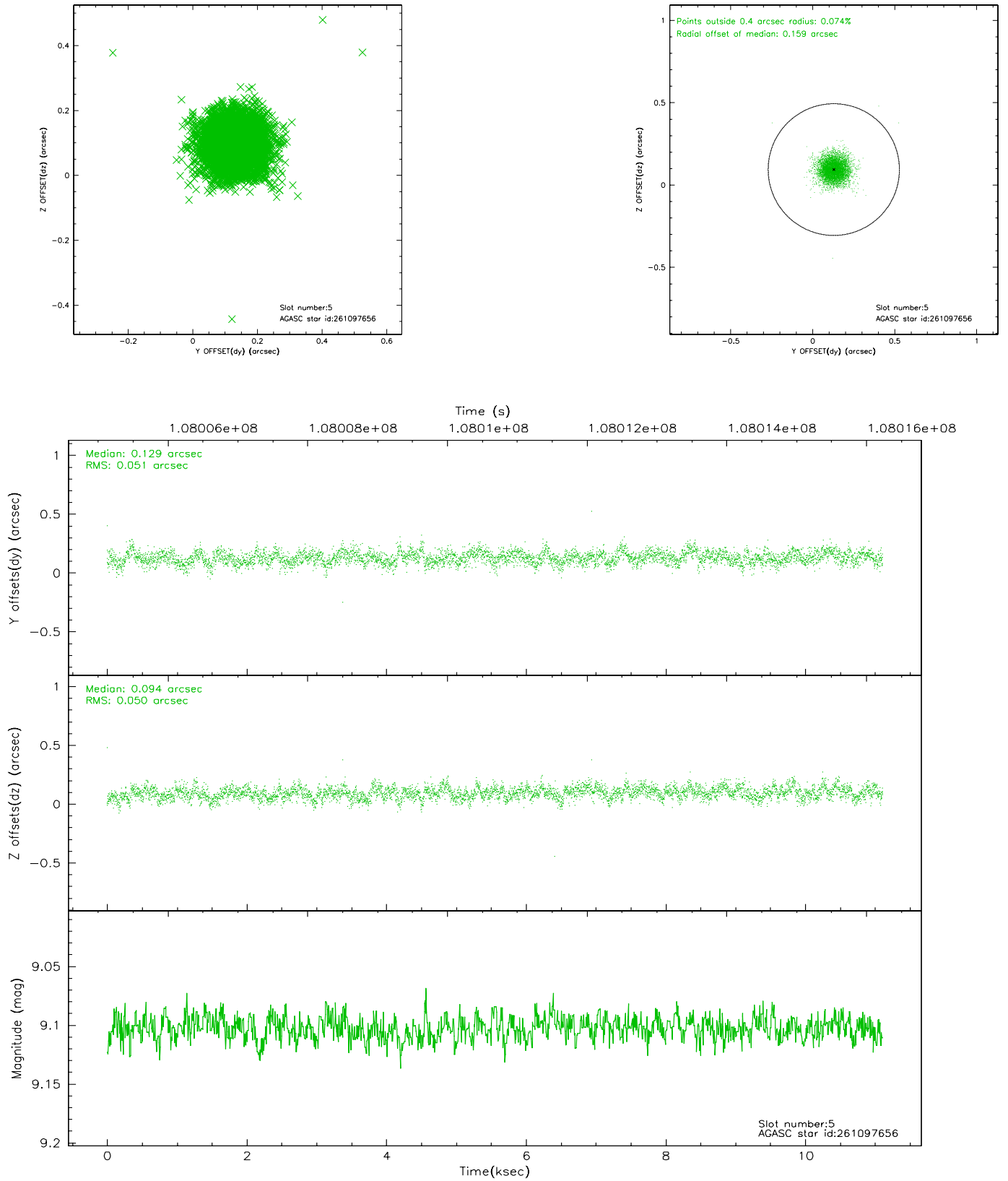
2.4.1 Slot 3



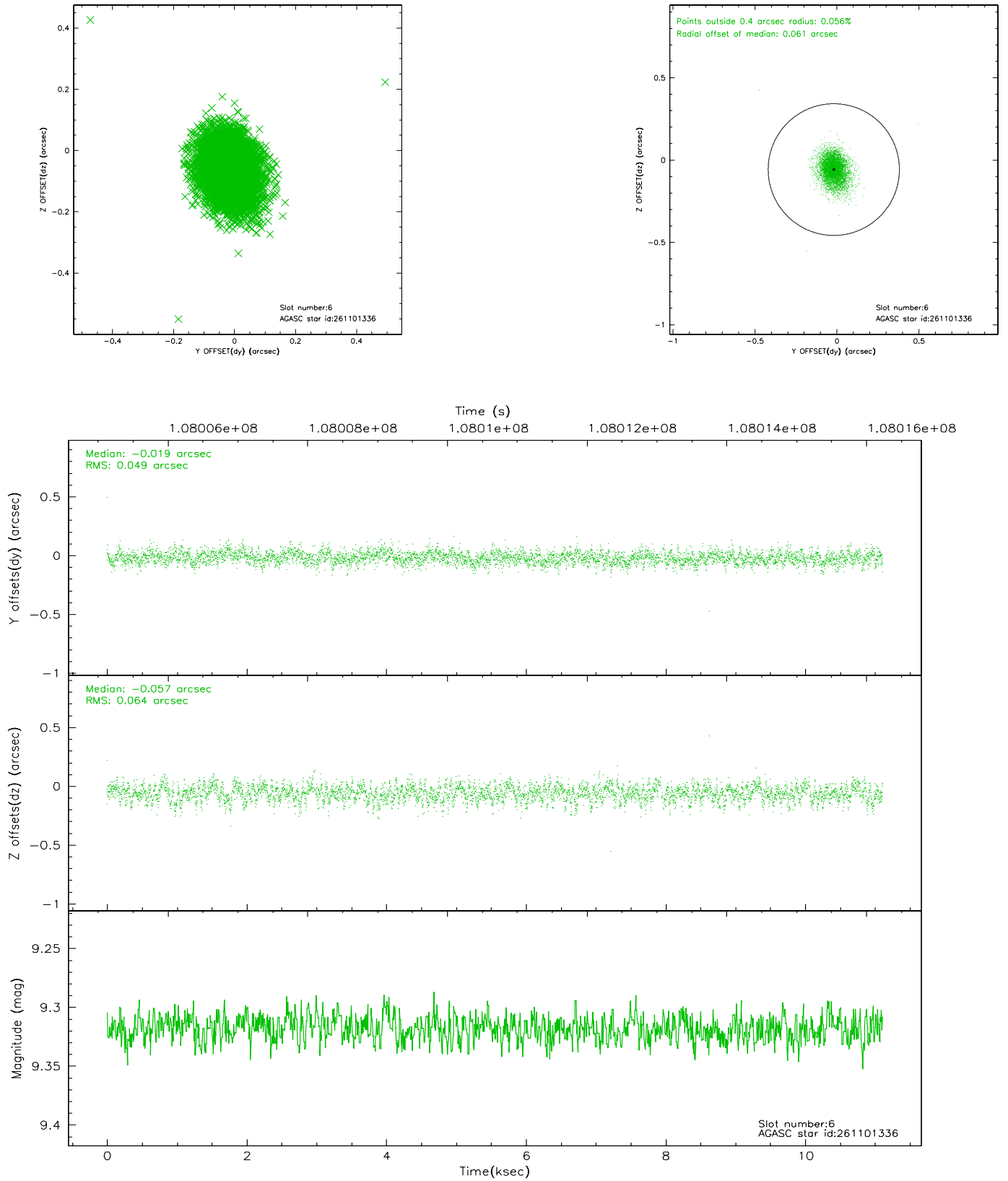
2.4.2 Slot 4



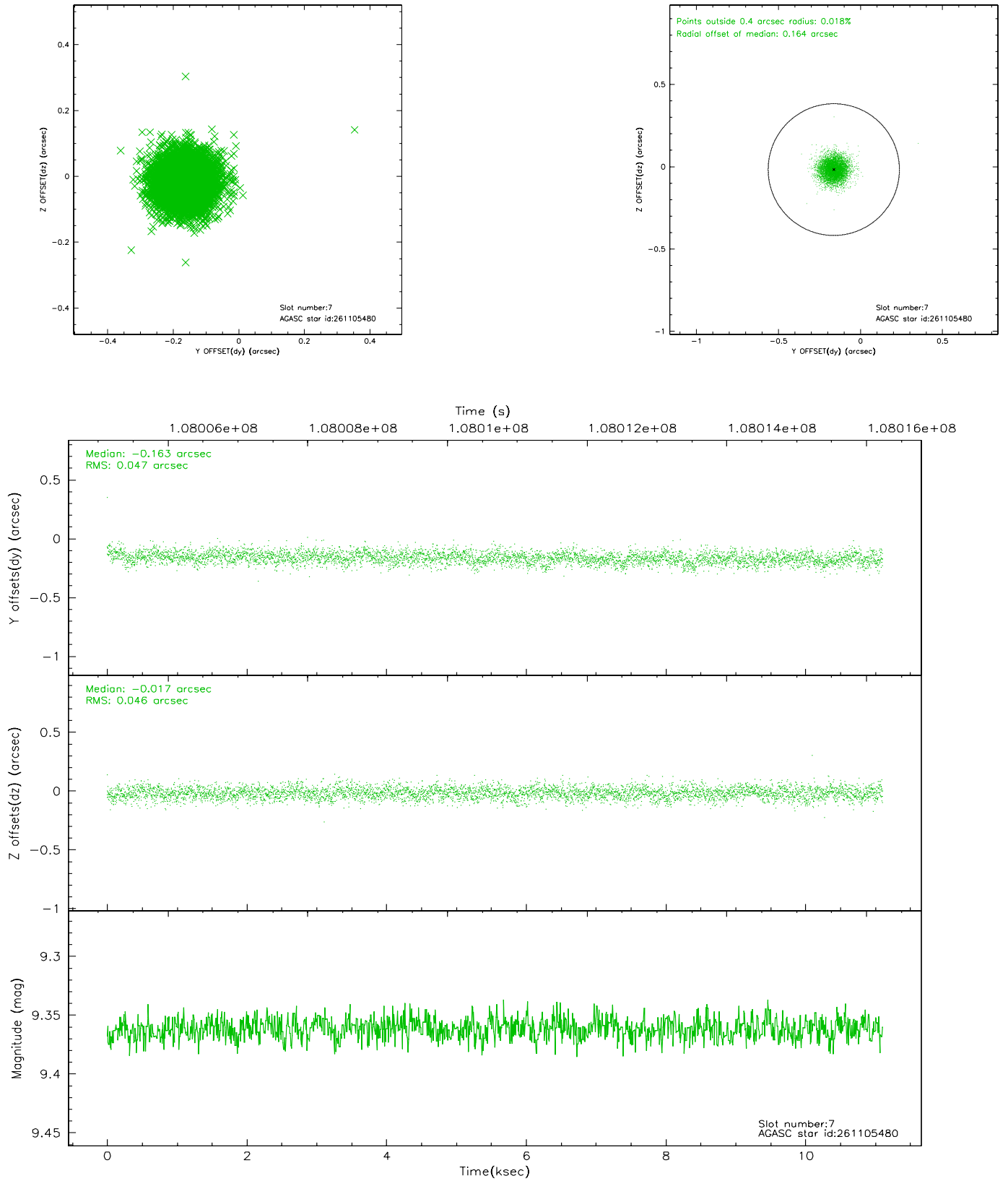
2.4.3 Slot 5



2.4.4 Slot 6

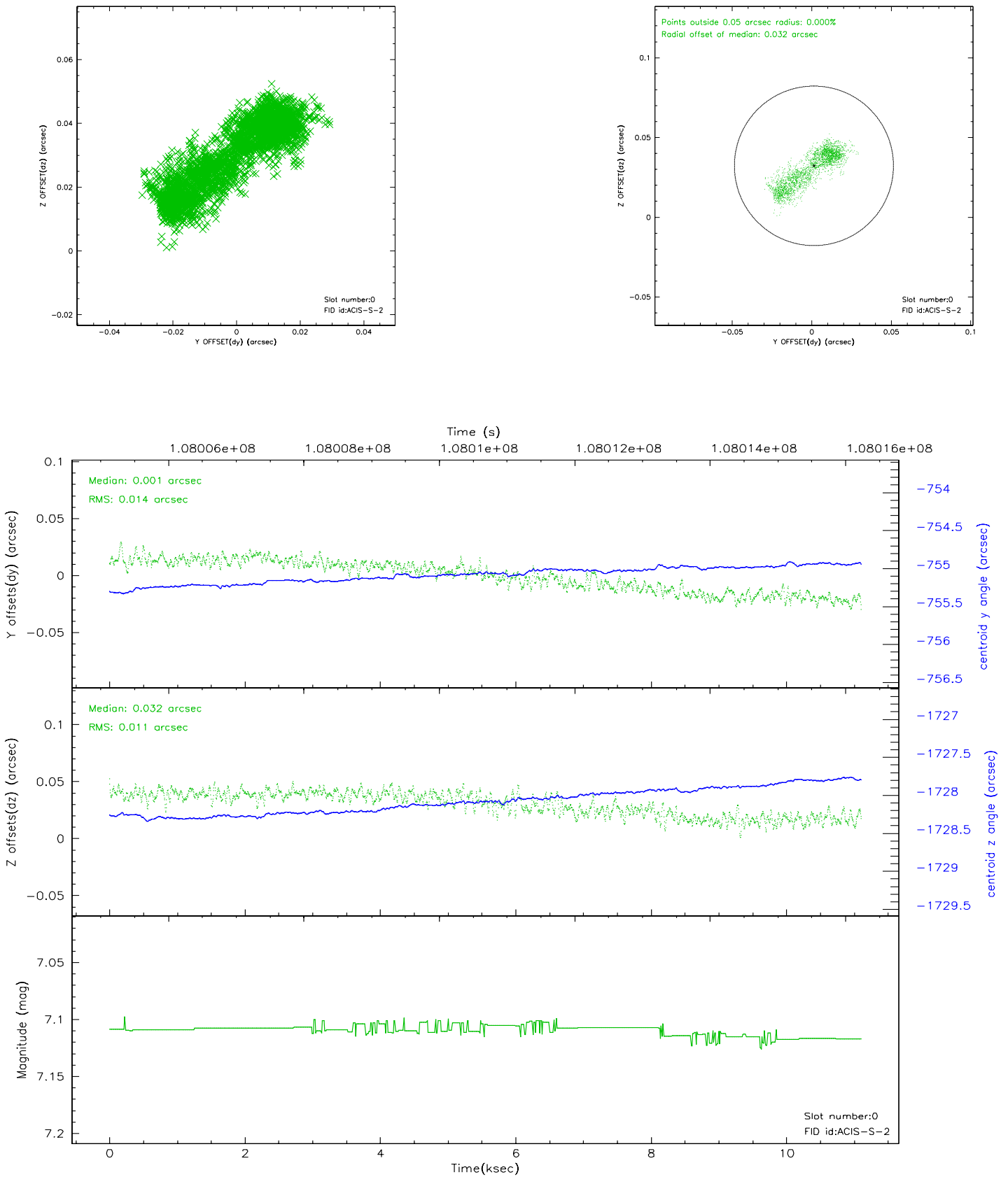


2.4.5 Slot 7

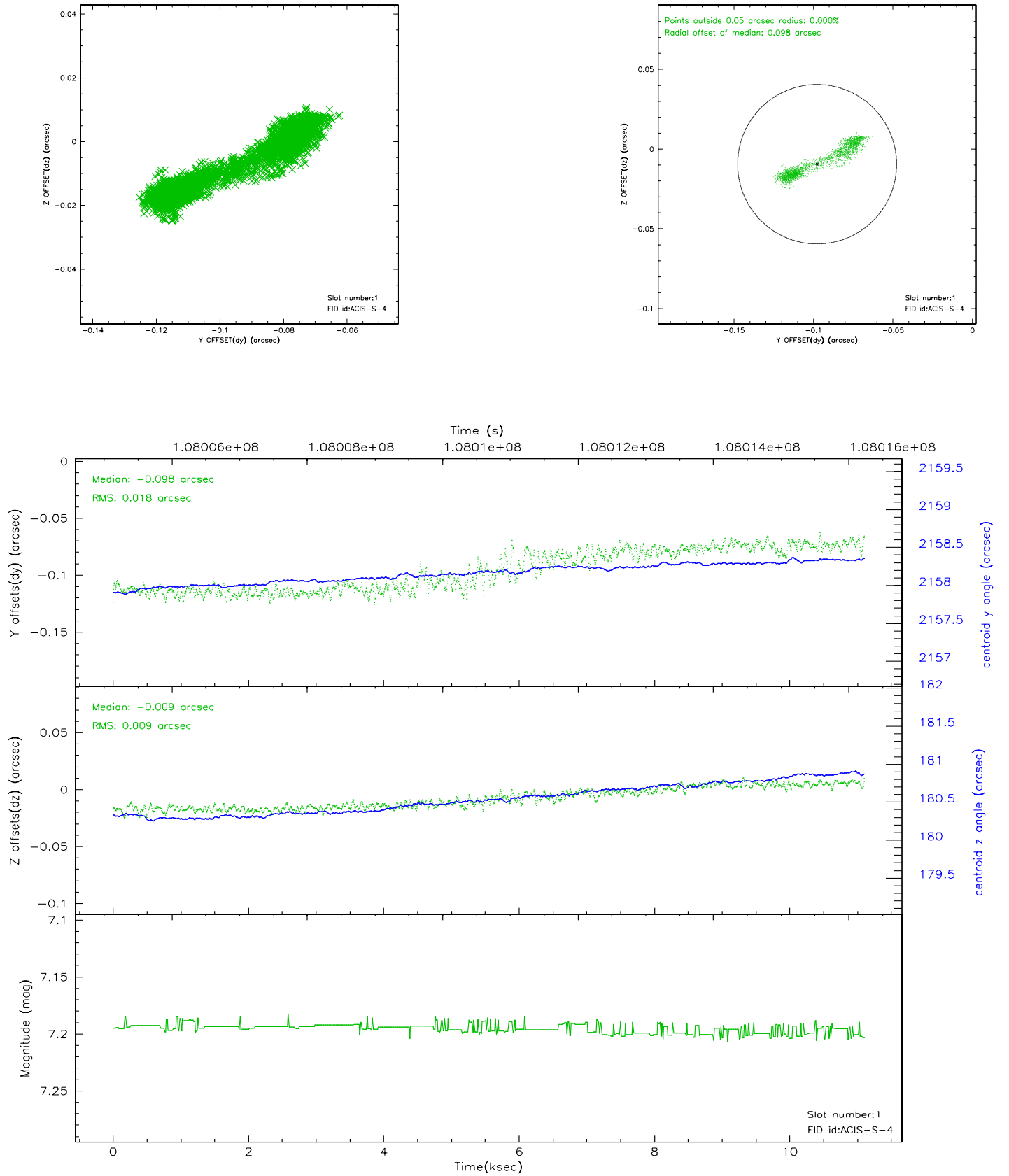


2.5 FID Slots

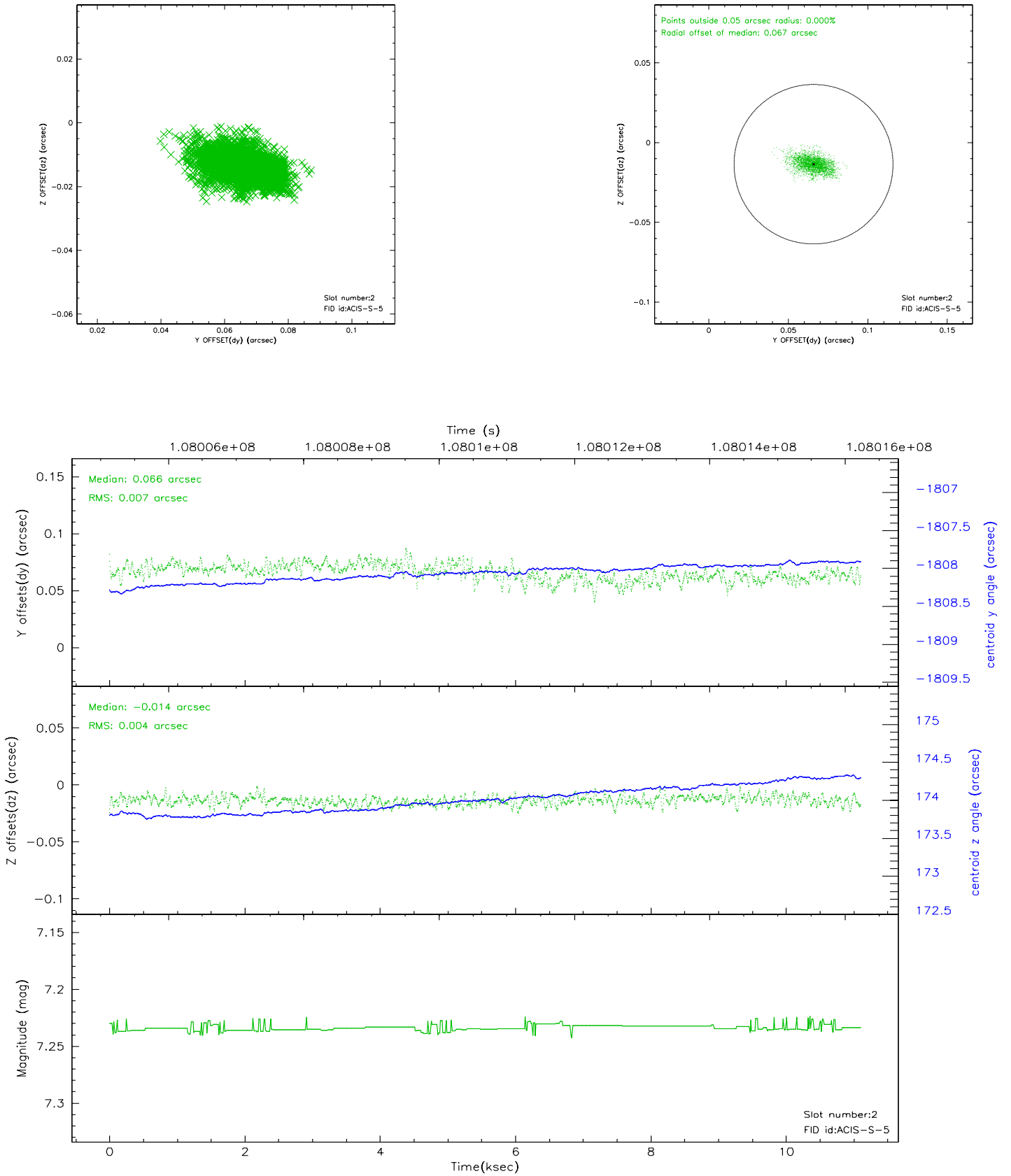
2.5.1 Slot 0



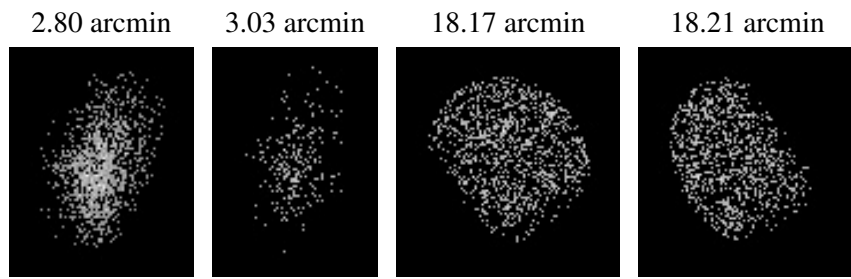
2.5.2 Slot 1



2.5.3 Slot 2



3 Point Sources



A Summary

A.1 Status

V&V Scientist	Jen Lauer
V&V Date (YYYY-MM-DD)	2006.11.27
V&V Edition	1
V&V Disposition and Status	OK
V&V Charge Time	11.1

A.2 Comments

Monitor constraint met.