

# V&V Reference Report

## L2 ASCDS Version : 10.4.1

Observation 17687 - L2 Version 1  
Chandra X-Ray Center

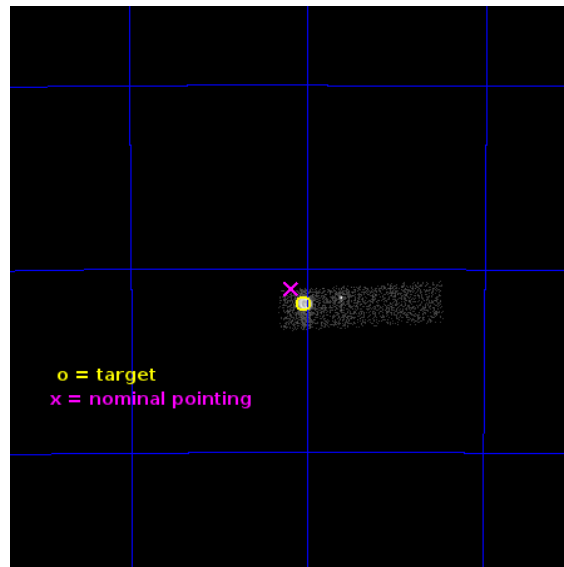
L2 Processing Date : Jul 18 2015

## Contents

<b>1</b>	<b>Front</b>	<b>2</b>
<b>2</b>	<b>OBI</b>	<b>3</b>
2.1	OBI . . . . .	3
2.1.1	Images . . . . .	3
2.1.2	Bias . . . . .	3
2.1.3	Parameters . . . . .	4
2.1.4	Events . . . . .	4
2.2	Compared Parameters . . . . .	5
2.3	Aspect . . . . .	6
2.4	Star Slots . . . . .	9
2.4.1	Slot 3 . . . . .	9
2.4.2	Slot 4 . . . . .	10
2.4.3	Slot 5 . . . . .	11
2.4.4	Slot 6 . . . . .	12
2.4.5	Slot 7 . . . . .	13
2.5	FID Slots . . . . .	14
2.5.1	Slot 0 . . . . .	14
2.5.2	Slot 1 . . . . .	15
2.5.3	Slot 2 . . . . .	16
<b>A</b>	<b>Summary</b>	<b>17</b>
A.1	Status . . . . .	17
A.2	Comments . . . . .	17

# 1 Front

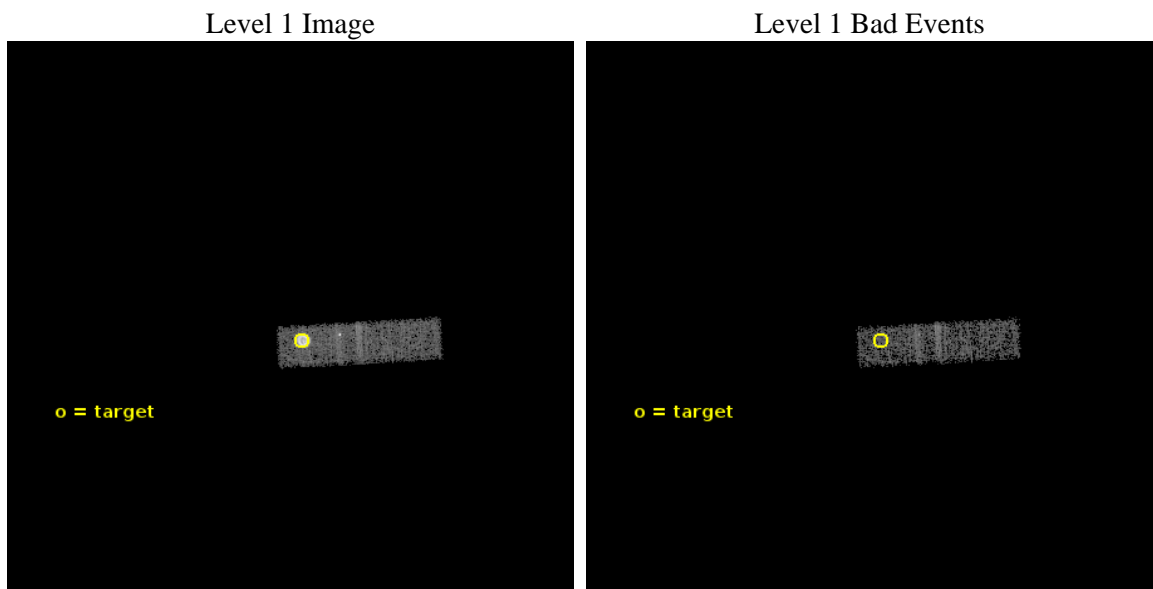
seq_num	590542	Sequence number
obs_id	17687	Observation id
title	Measuring the Spatial Distribution of the ACIS contaminant with E0102-72	Proposal title
observer	Dr. CXC Calibration	Principal investigator
object	E0102-72	Source name
dtcycle	0	&#160
cycle	P	events from which exps? Prim/Second/Both
ra_targ	16.01	Observer's specified target RA [deg]
dec_targ	-72.032028	Observer's specified target Dec [deg]
ra_nom	16.045413758744	Nominal RA [deg]
dec_nom	-72.018256147575	Nominal Dec [deg]
roll_nom	86.689433194897	Nominal Roll [deg]
revision	1	Processing version of data
ontime	13966.207944155	Sum of GTIs [s]
livetime	13284.702695857	Livetime [s]
ontime3	13966.207944155	Sum of GTIs [s]
l2events	30675	Number of level 2 events



## 2 OBI

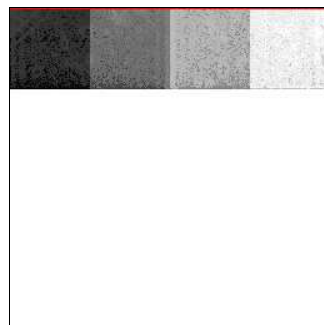
### 2.1 OBI

#### 2.1.1 Images



#### 2.1.2 Bias

Chip 3



### 2.1.3 Parameters

obi_num	0	Obi number	sched_exp_time	13904.578000	[s] Scheduled observation exposure time
ascdsver	10.4.1	Processing system revision	ontime	13966.207944155	Sum of GTIs [s]
caldbver	4.6.8	&#160	ontime3	13966.207944155	Sum of GTIs [s]
date	2015-07-18T19:33:18	Date and time of file creation	l1events	48768	Number of level 1 events
revision	1	Processing version of data			

### 2.1.4 Events

	<b>ccd 3</b>
level 1 events	48768
rejected events	17544
rejected %	35%

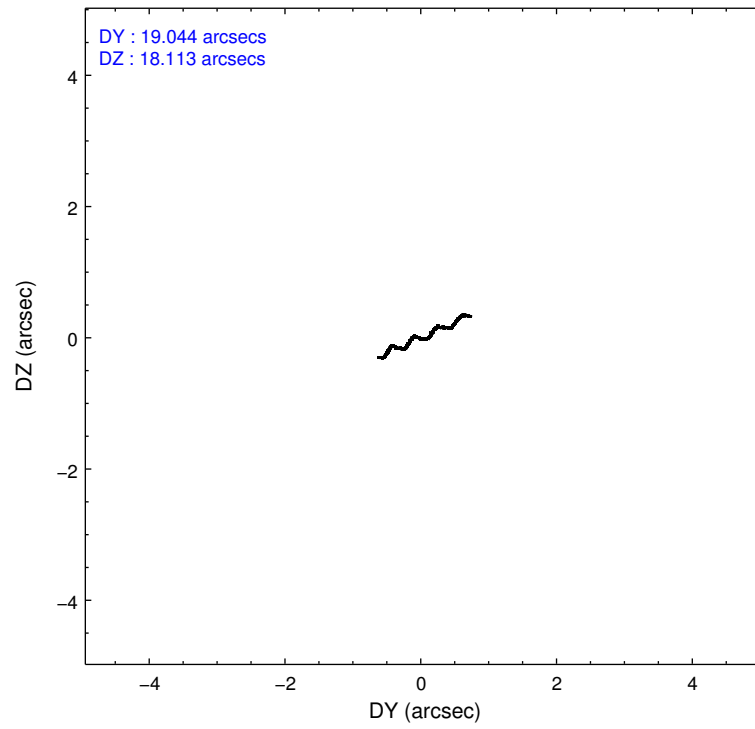
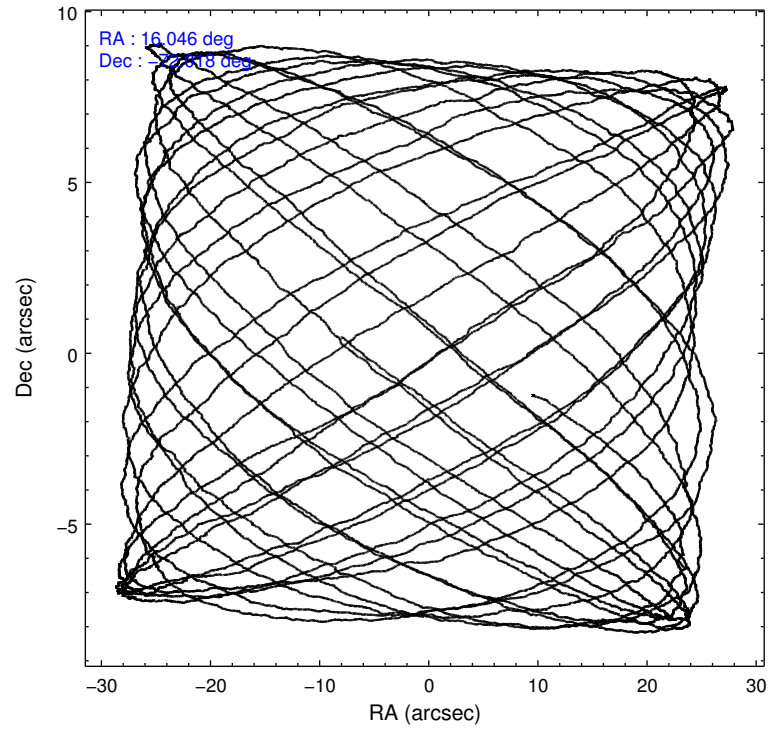
	<b>ccd 3</b>
grade 0 events	26390
	54%
grade 1 events	88
	0%
grade 2 events	2452
	5%
grade 3 events	853
	1%
grade 4 events	852
	1%
grade 5 events	824
	1%
grade 6 events	682
	1%
grade 7 events	16627
	34%

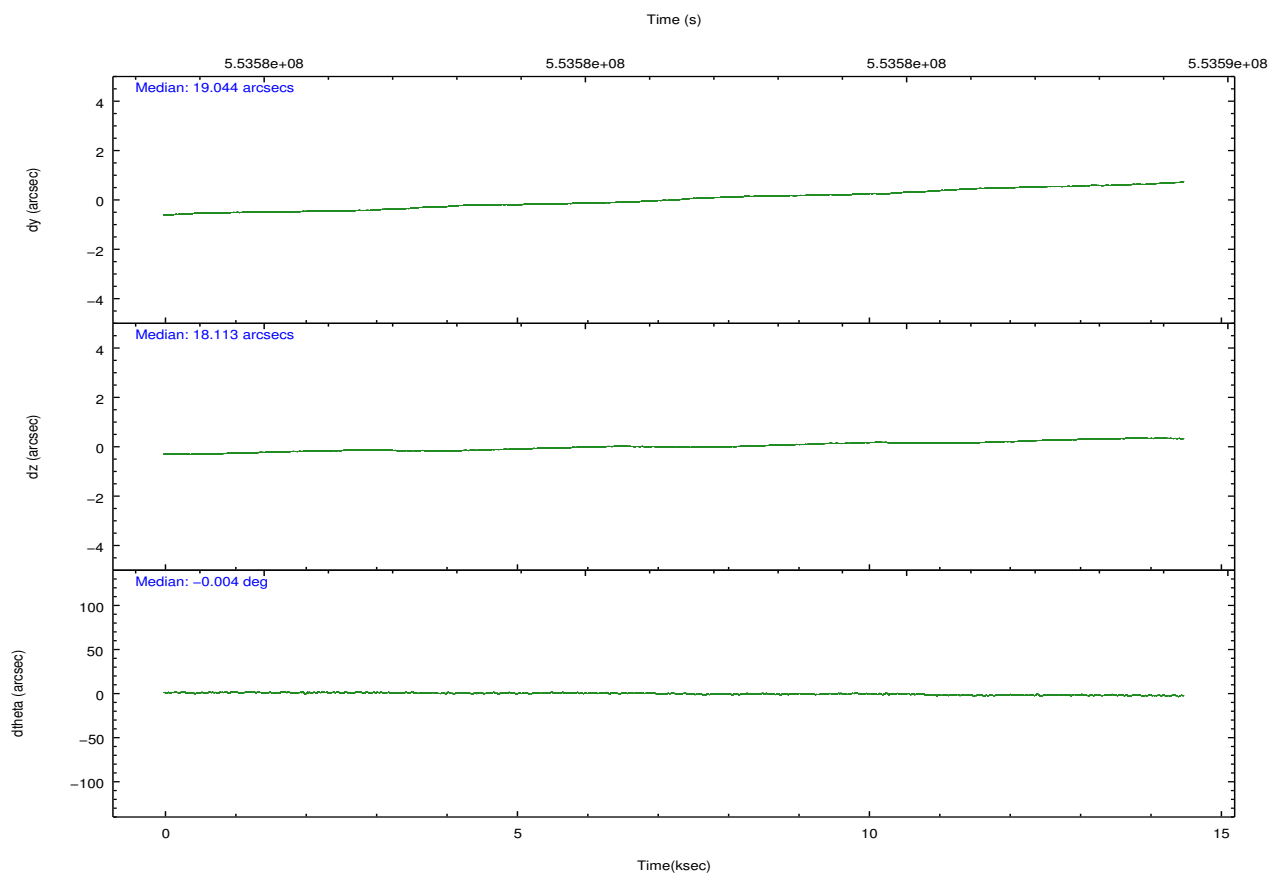
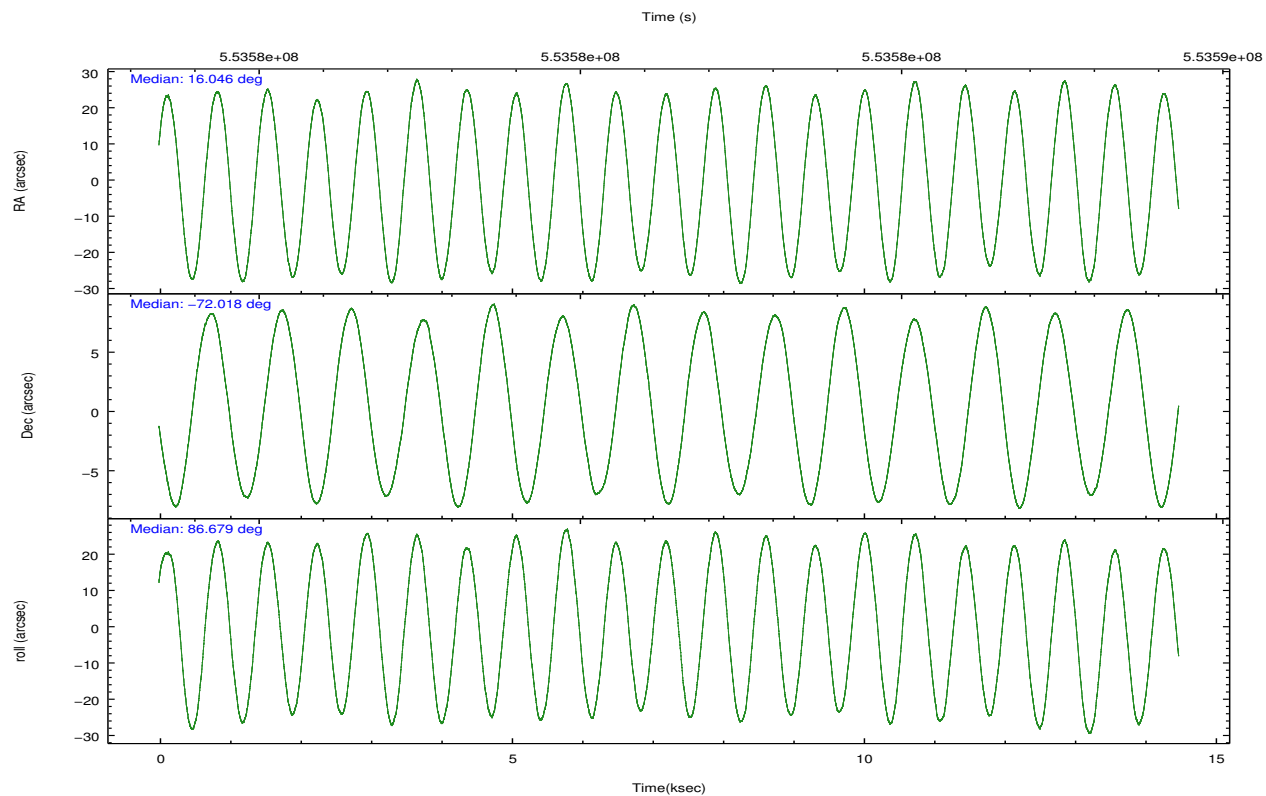


## 2.2 Compared Parameters

Parameter	Planned	Actual	Parameter	Planned	Actual
Instrument	ACIS	ACIS	Obspar format version number	7	7
Detector	ACIS-3	ACIS-3	Obspar file type	PREDICTED	ACTUAL
Grating	NONE	NONE	Obspar update status	NONE	UPDATED
Data mode	VFAINT	VFAINT	Number of optional ACIS chips dropped	0	0
Observation mode	POINTING	POINTING	On-chip summing requested	N	N
[deg] Pointing RA	16.085836	16.04541375874368	Subarray requested	CUSTOM	1/4
[deg] Pointing Dec	-72.042823	-72.01825614757524	Subarray start row	768	768
[deg] Pointing Roll	86.519203	86.68943319489748	Subarray row count	256	256
[mm] SIM focus pos	-0.782348	-0.7809083437167272	Alternating exposures requested	N	N
[mm] SIM defocus	0	0.001439871863259334	[s] Primary exposure time	0.000000	0.8
[mm] SIM translation stage pos	-233.592463	-233.5899487761303			
[mm] SIM translation stage offset	0	-0.002504226799430853			
[s] Observation start time (MET)	553574705.184000	553573926.63582			
Observation start date	2015-07-18T02:43:57	2015-07-18T02:32:06			
[s] Observation end time (MET)	553588610.184000	553588846.02416			
Observation end date	2015-07-18T06:35:42	2015-07-18T06:40:46			
Read mode	TIMED	TIMED			

## 2.3 Aspect



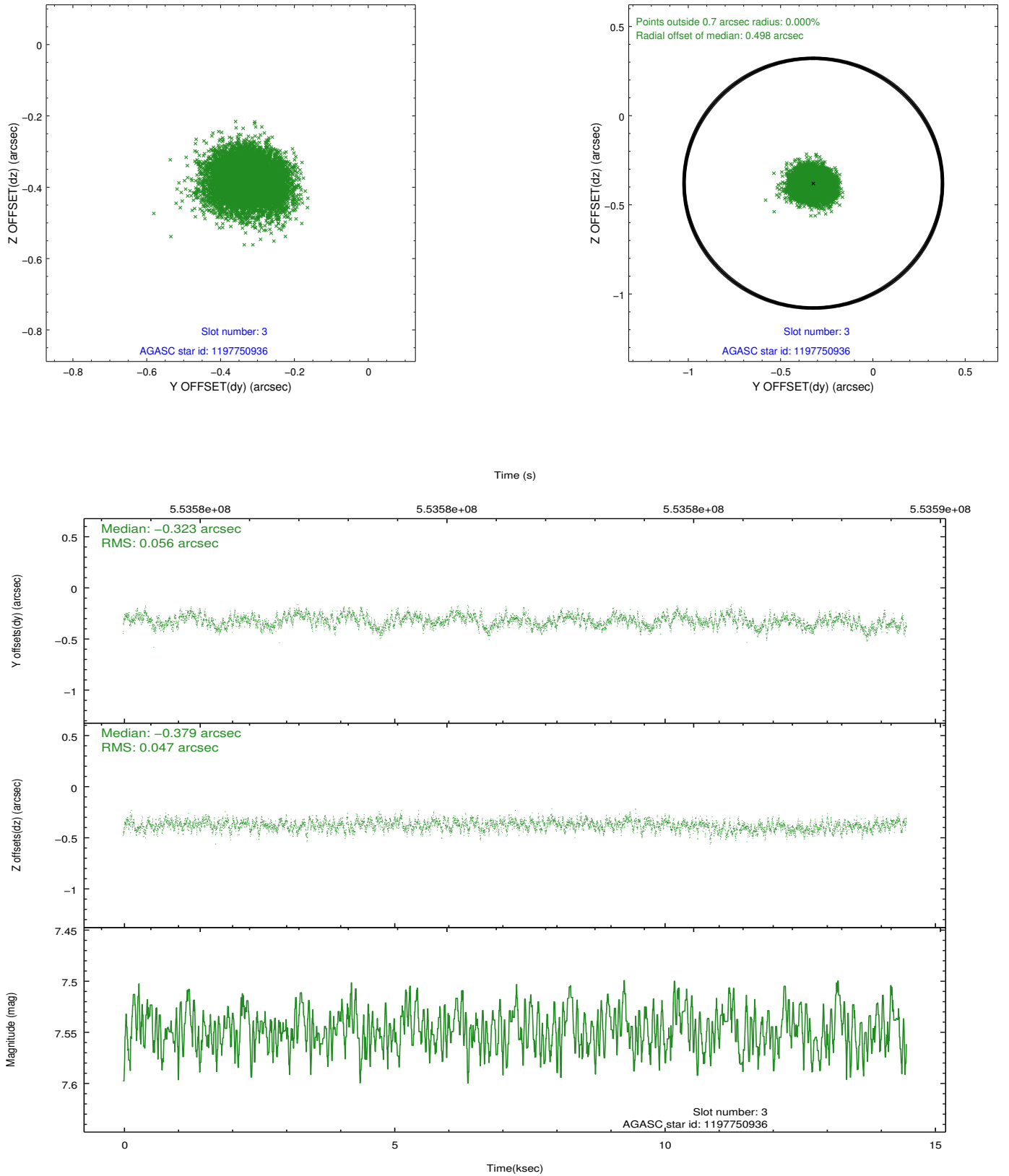


### Slot Statistics

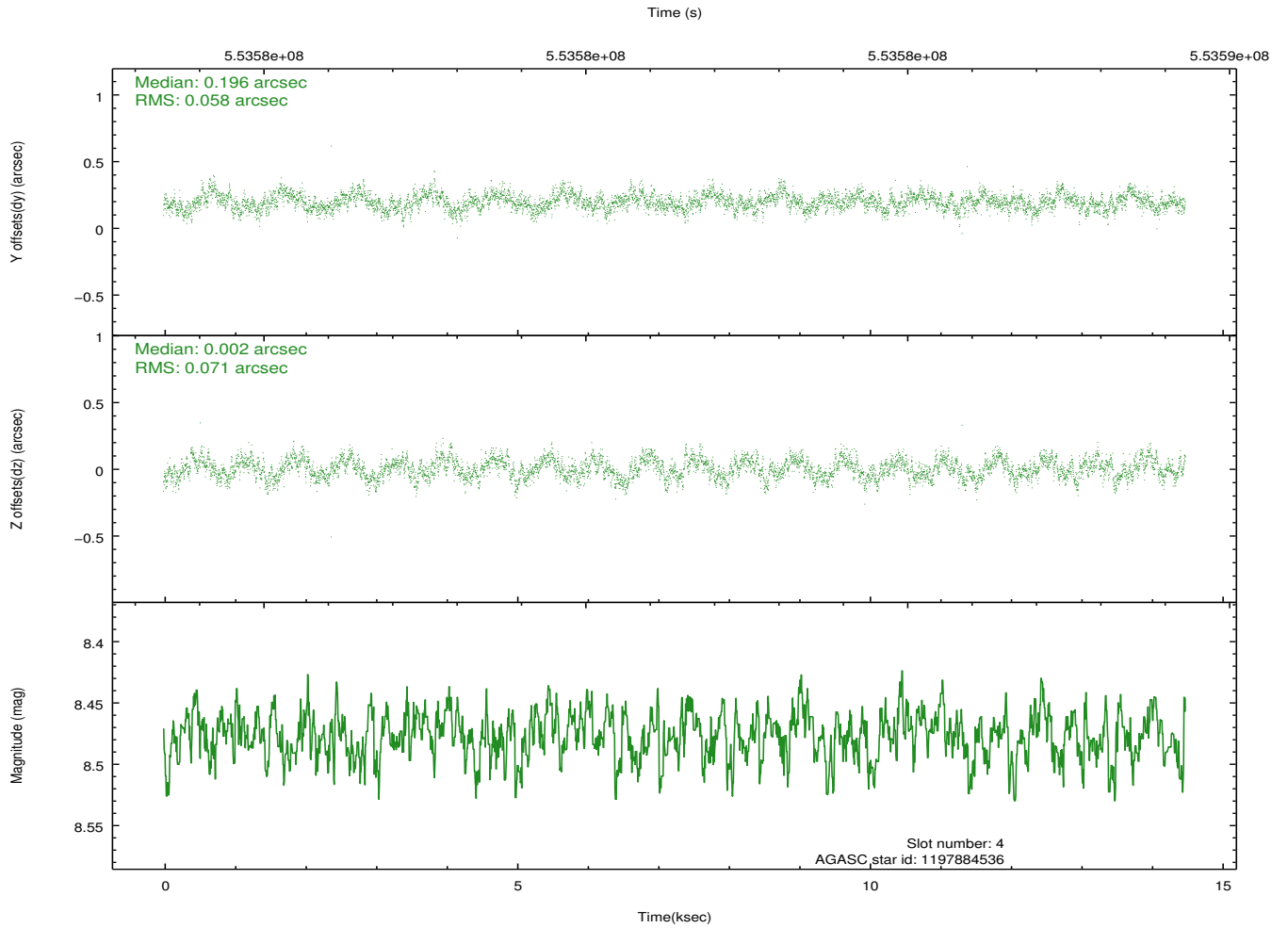
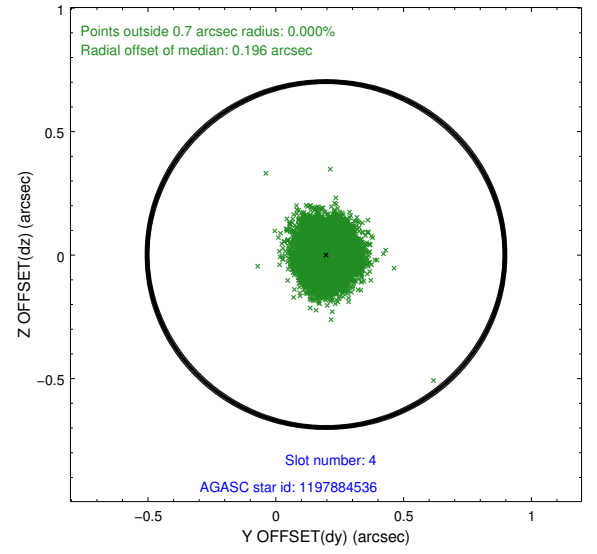
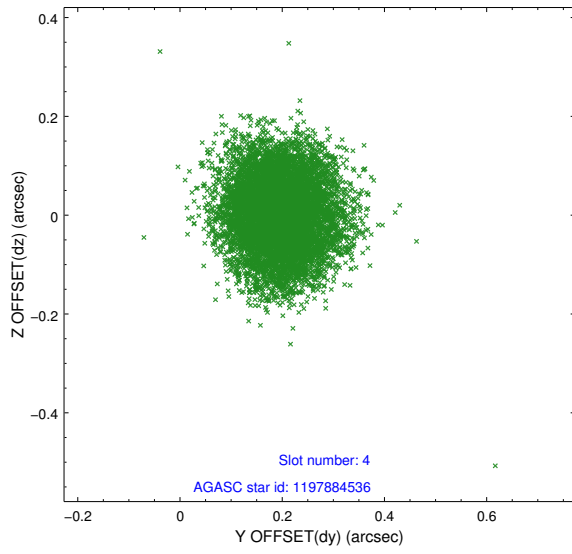
slot	status	used	id	mag	n_pts	med_dy	med_dz	dr1	dr2	ra	dec	mean_y	mean_z
0	FID		ACIS-I-1	7.13	3534	0.062	0.018	0.012	0.030	0.000000	0.000000	920.37	-841.71
1	FID		ACIS-I-5	7.12	3534	-0.309	0.047	0.010	0.017	0.000000	0.000000	-1827.99	1055.56
2	FID		ACIS-I-6	7.13	3534	0.159	0.005	0.010	0.015	0.000000	0.000000	385.58	1700.45
3	GUIDE	used	1197750936	7.55	7067	-0.323	-0.379	0.079	0.123	15.387940	-71.549550	1718.98	901.35
4	GUIDE	used	1197884536	8.48	7064	0.196	0.002	0.099	0.154	17.160729	-71.835289	809.36	-1158.67
5	GUIDE	used	1197885104	9.34	7063	0.271	0.184	0.127	0.204	17.845067	-72.189368	-437.08	-1966.16
6	GUIDE	used	1197885328	7.24	7066	-0.201	0.008	0.069	0.112	16.283090	-71.733943	1124.12	-155.89
7	GUIDE	used	1198283128	7.89	7065	0.058	0.183	0.087	0.135	17.272580	-72.642428	-2088.87	-1403.82

## 2.4 Star Slots

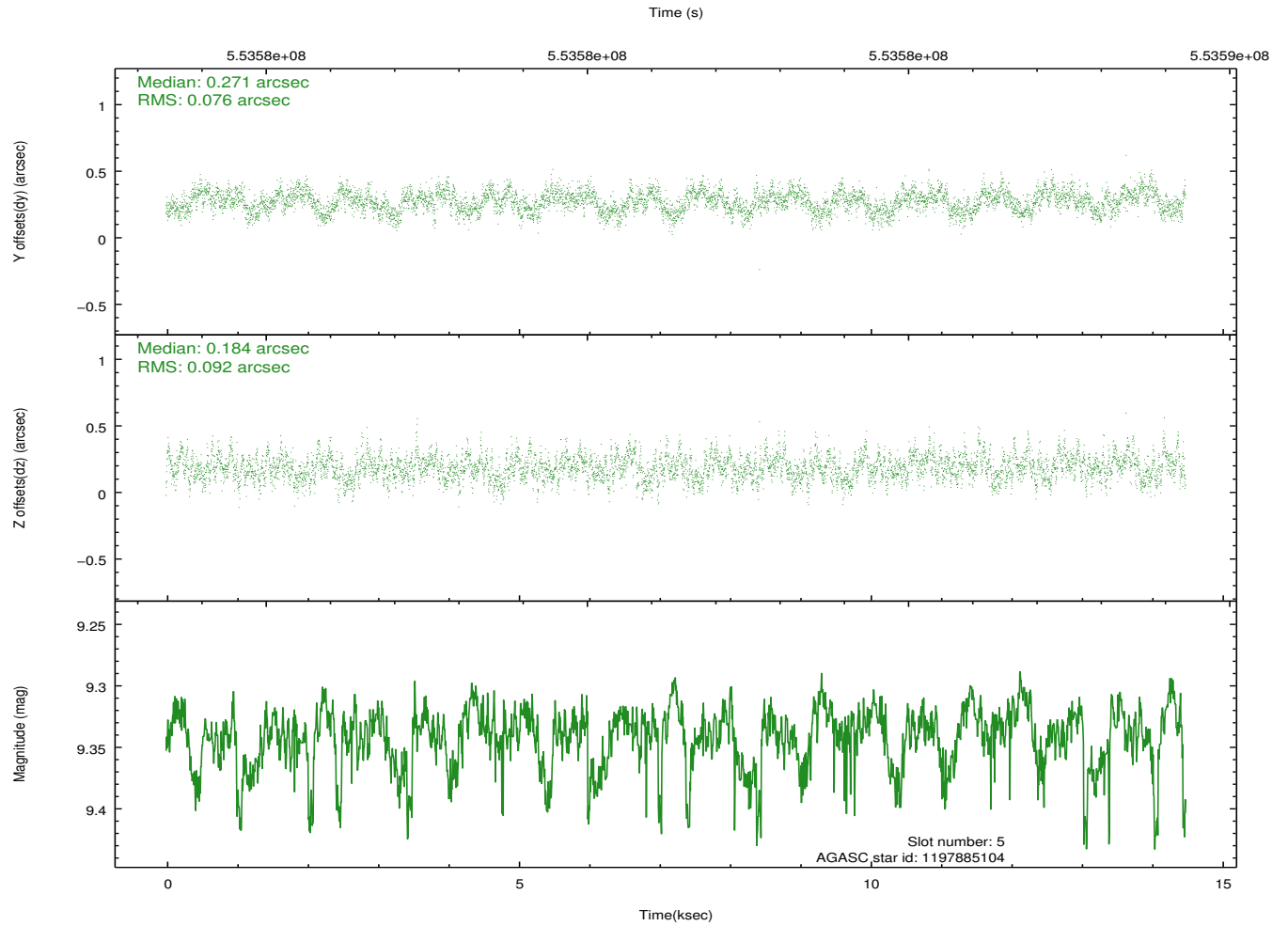
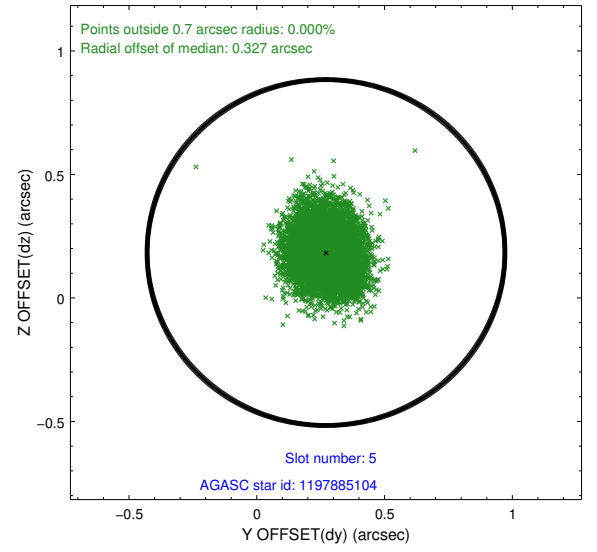
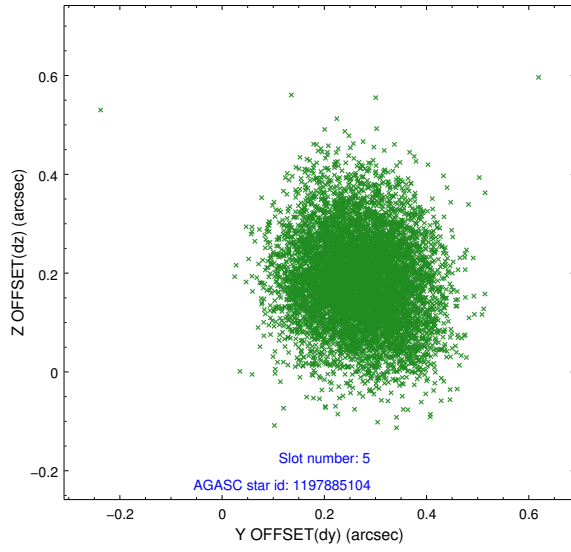
### 2.4.1 Slot 3



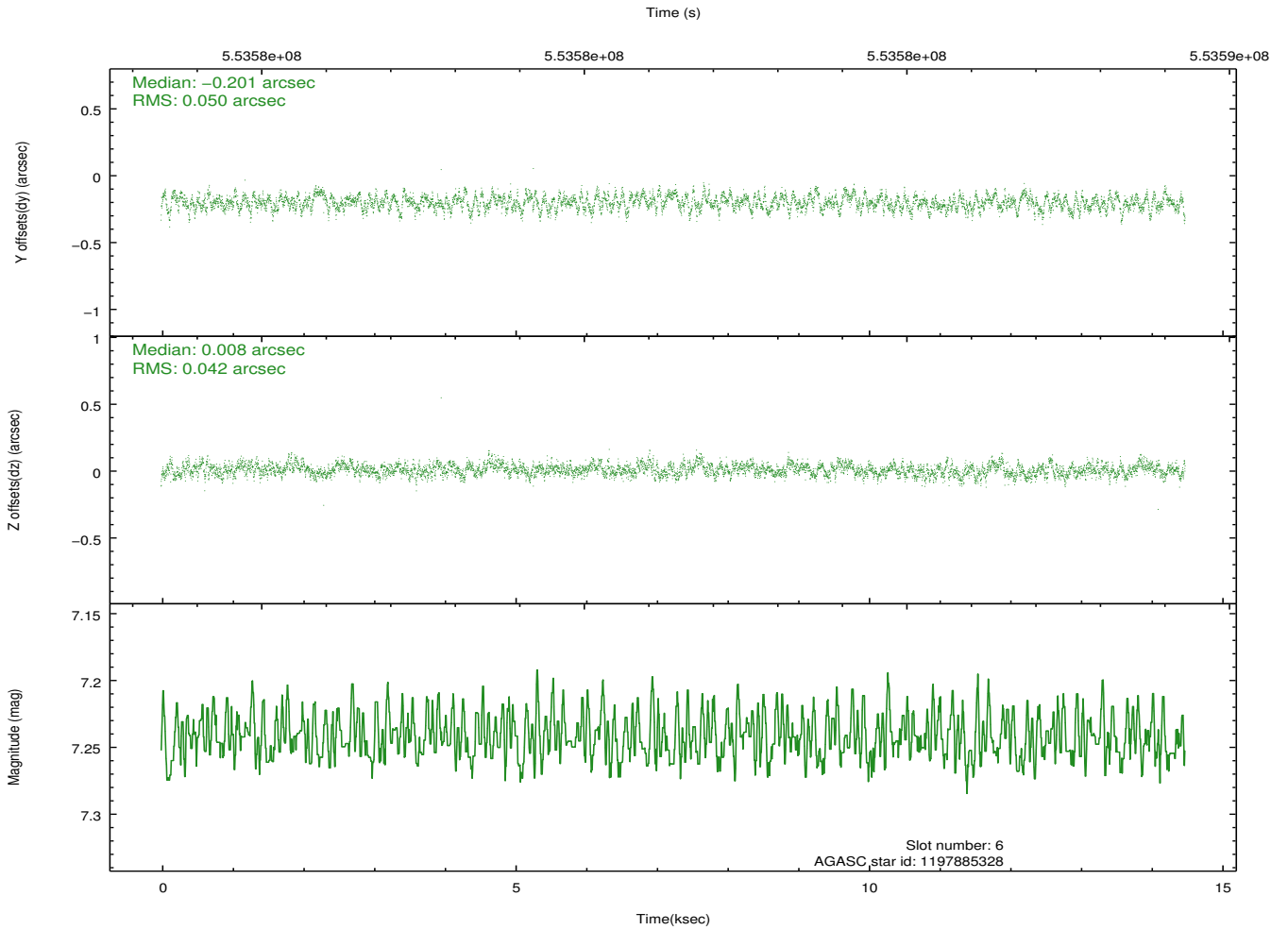
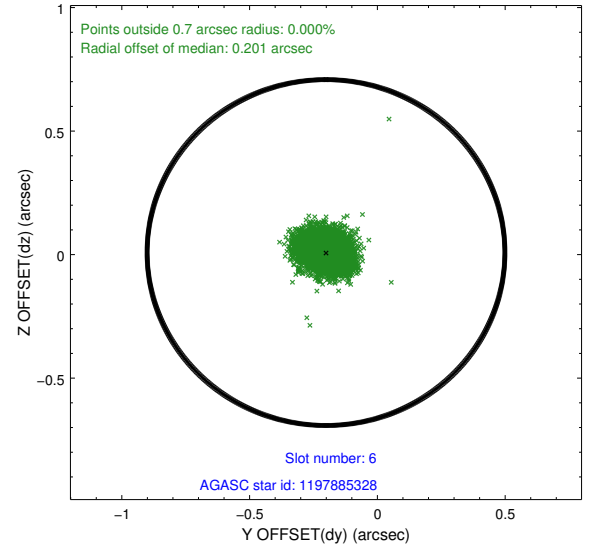
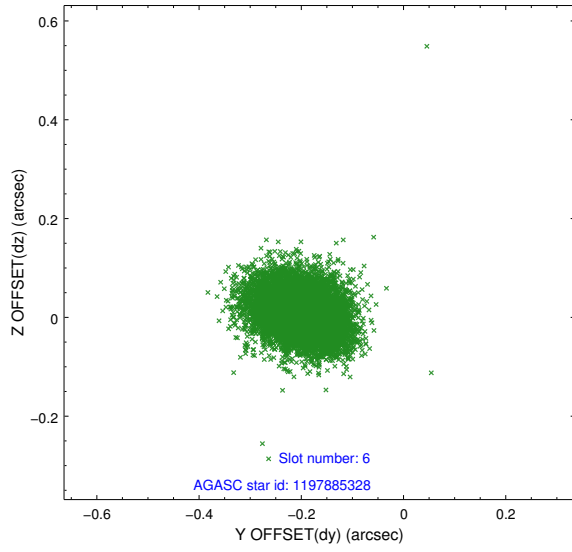
## 2.4.2 Slot 4



### 2.4.3 Slot 5

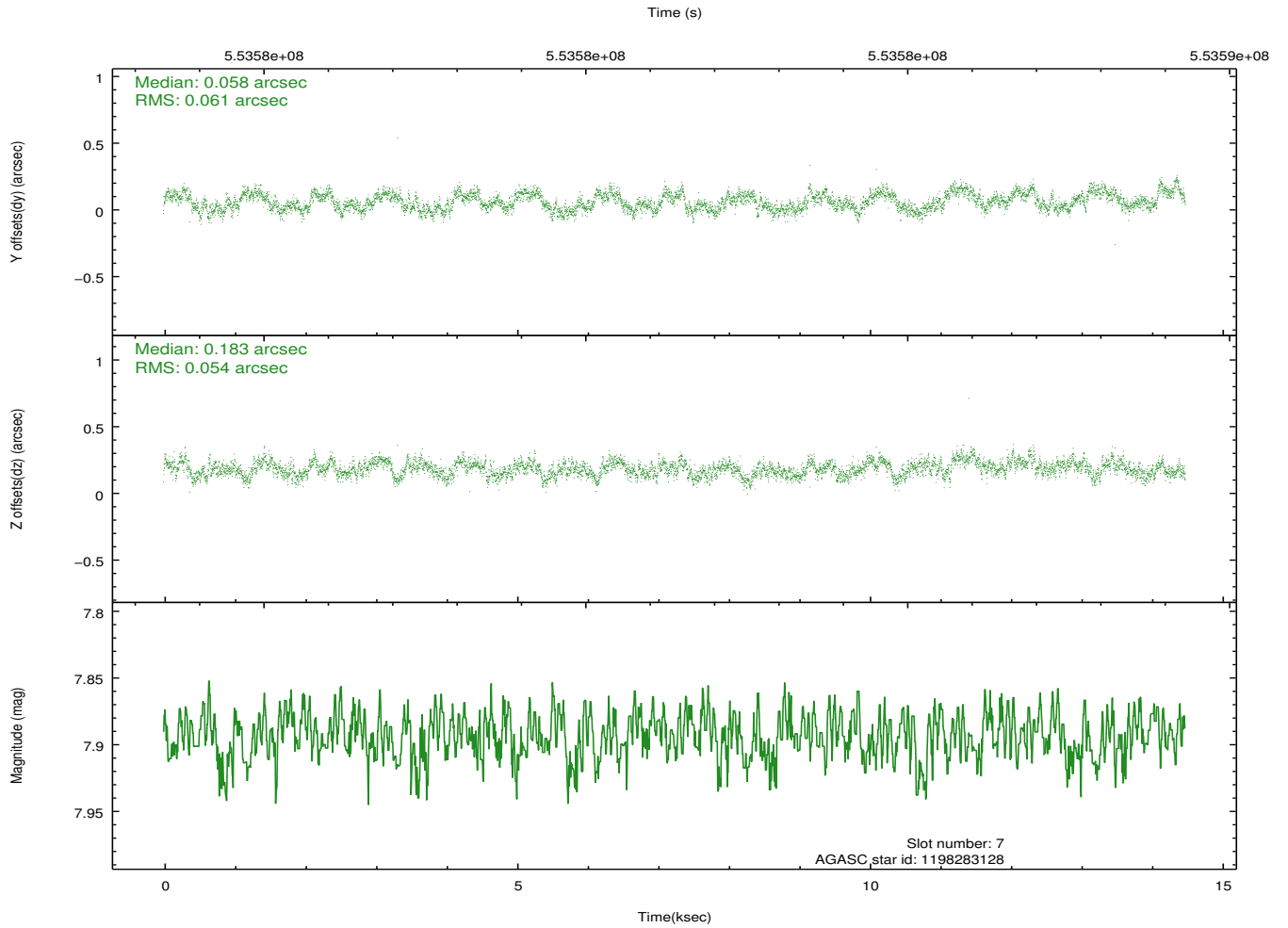
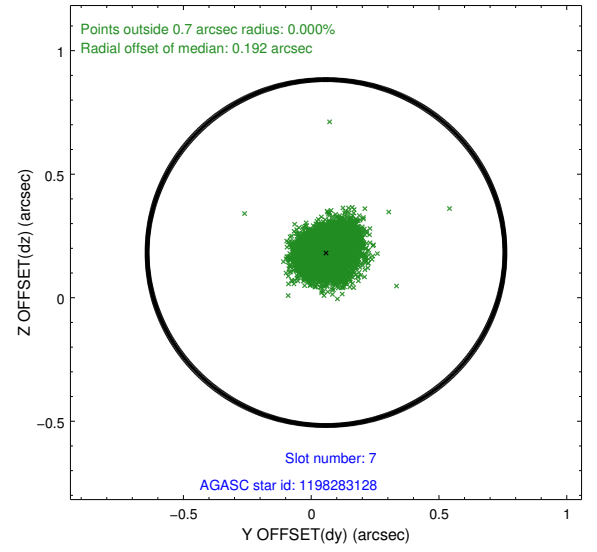
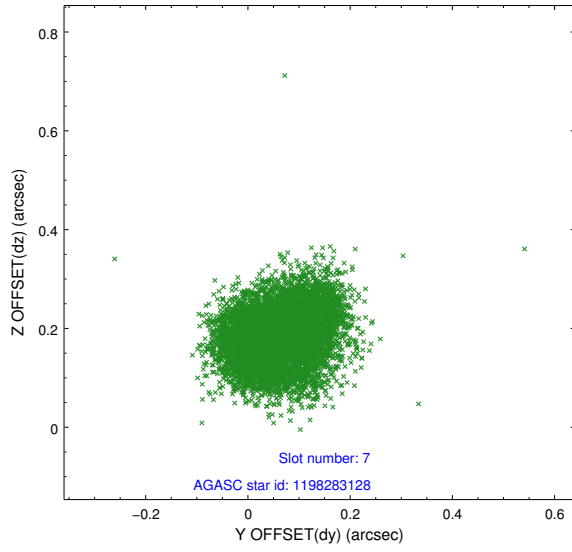


## 2.4.4 Slot 6



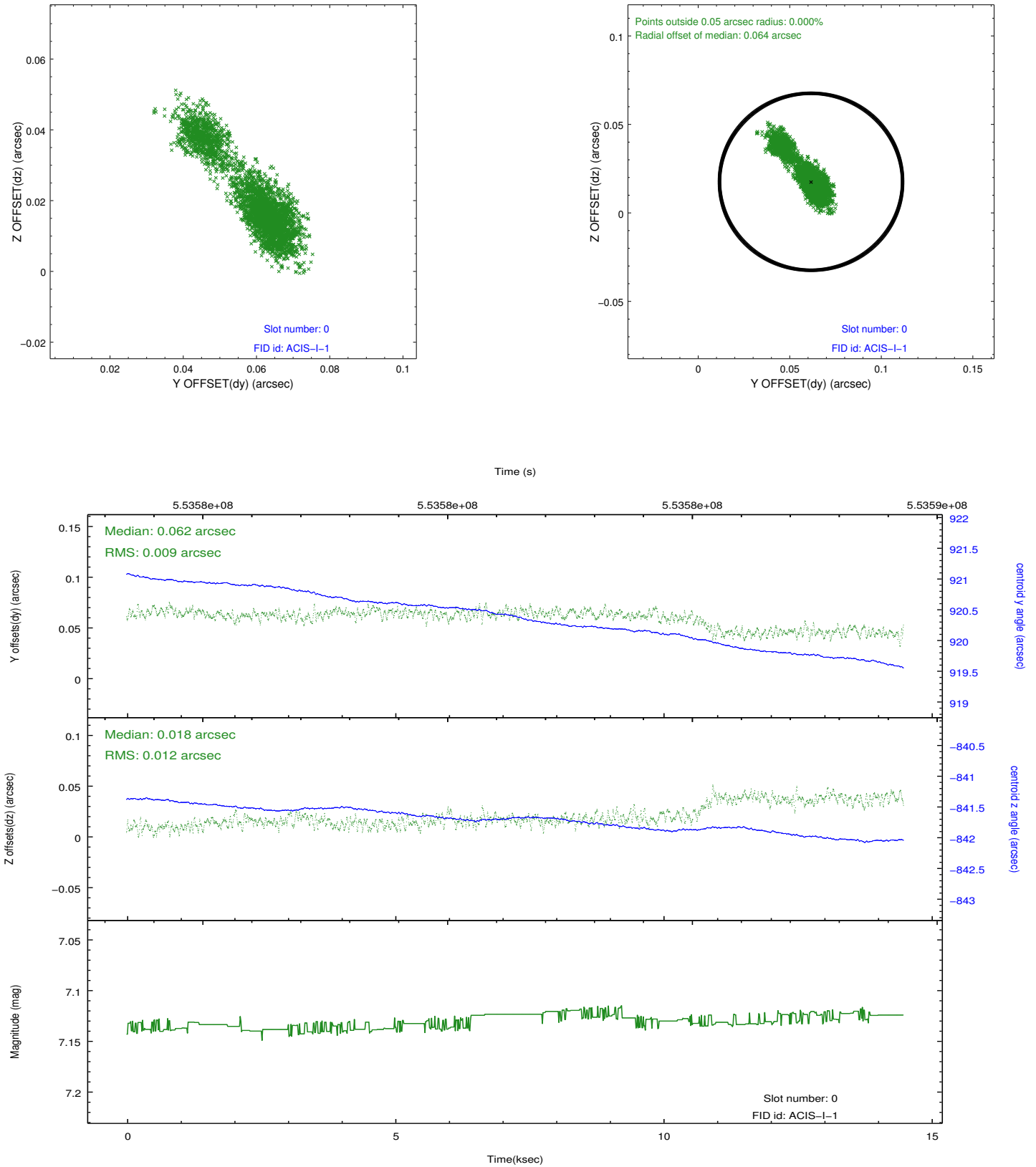


## 2.4.5 Slot 7

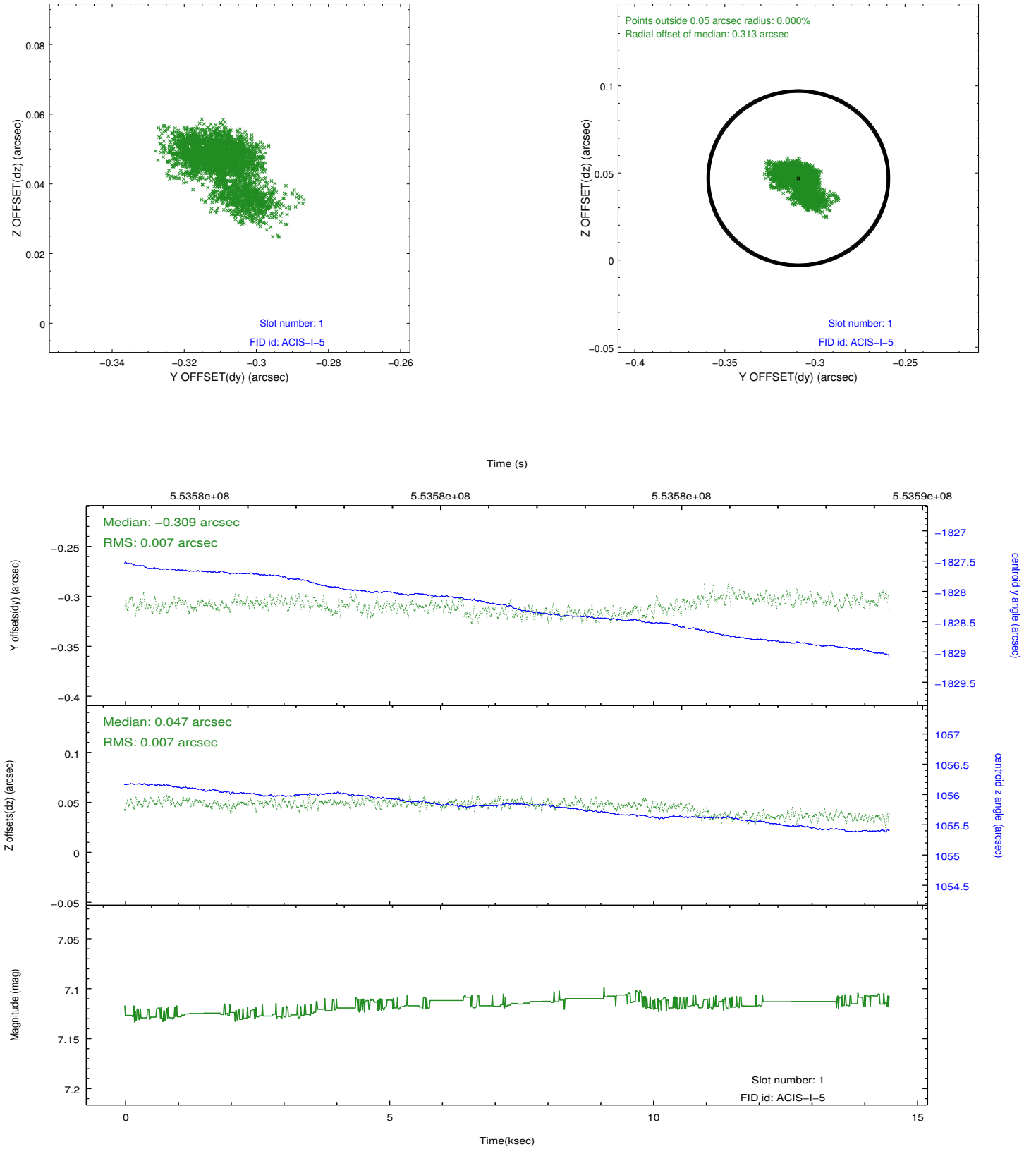


## 2.5 FID Slots

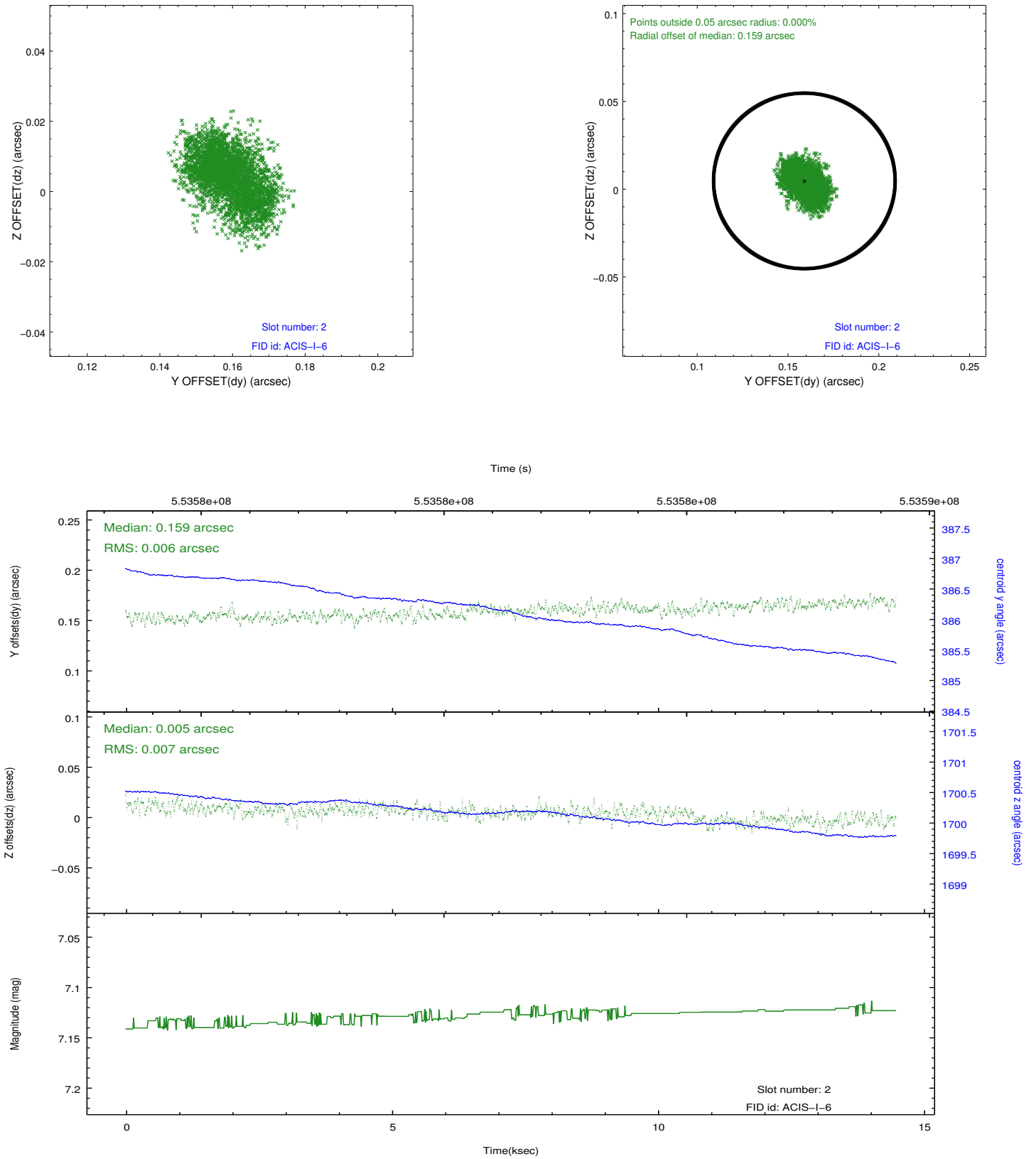
### 2.5.1 Slot 0



## 2.5.2 Slot 1



### 2.5.3 Slot 2



## A Summary

### A.1 Status

V&V Scientist	Beth Sundheim
V&V Date (YYYY-MM-DD)	2015.07.18
V&V Edition	1
V&V Disposition and Status	OK
V&V Charge Time	13.966207944155

### A.2 Comments