

V&V Reference Report

L2 ASCDS Version : 10.3.3

Observation 17397 - L2 Version 1
Chandra X-Ray Center

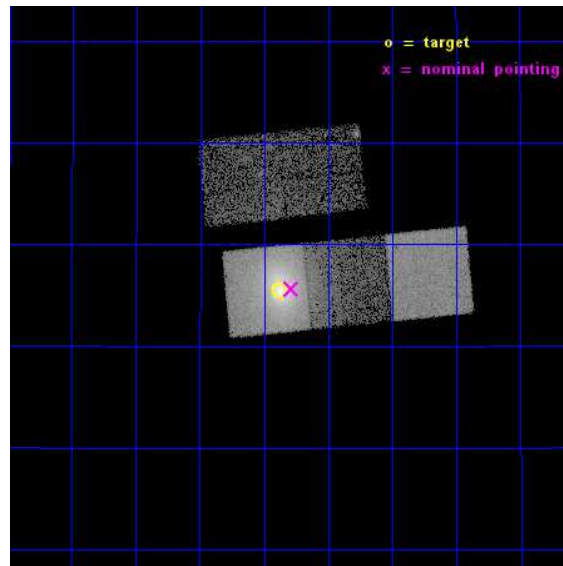
L2 Processing Date : Apr 16 2015

Contents

1	Front	2
2	OBI	3
2.1	OBI	3
2.1.1	Images	3
2.1.2	Bias	3
2.1.3	Parameters	4
2.1.4	Events	4
2.2	Compared Parameters	5
2.3	Aspect	6
2.4	Star Slots	9
2.4.1	Slot 3	9
2.4.2	Slot 4	10
2.4.3	Slot 5	11
2.4.4	Slot 6	12
2.4.5	Slot 7	13
2.5	FID Slots	14
2.5.1	Slot 0	14
2.5.2	Slot 1	15
2.5.3	Slot 2	16
A	Summary	17
A.1	Status	17
A.2	Comments	17

1 Front

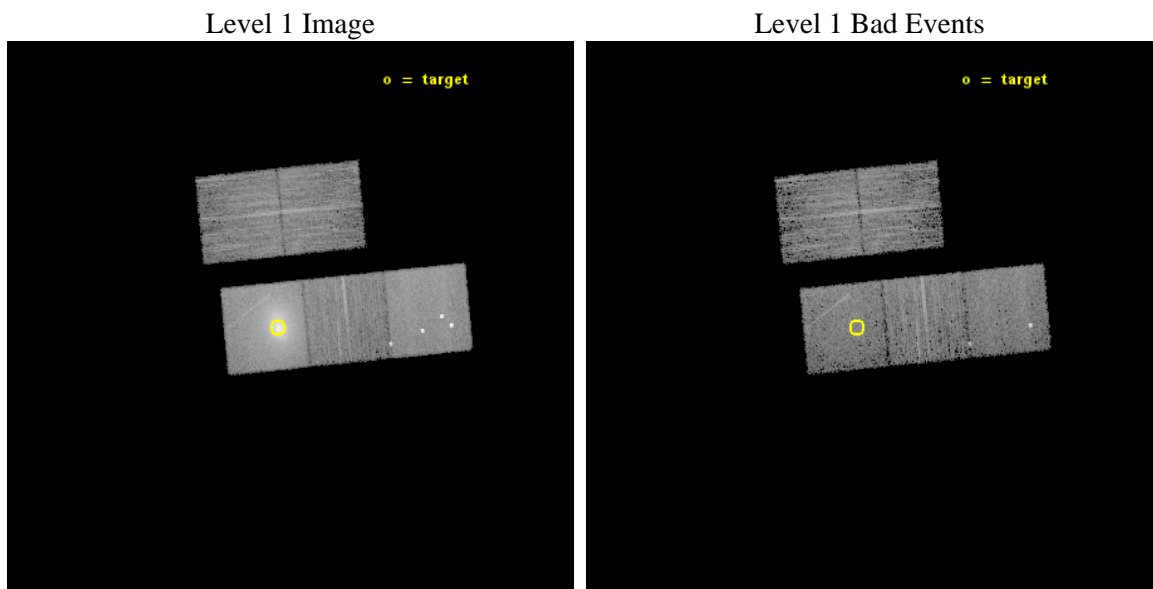
seq_num	890097	Sequence number
obs_id	17397	Observation id
title	AO-16 Calibration Observations of A1795	Proposal title
observer	Dr. CXC Calibration	Principal investigator
object	A1795	Source name
dtcycle	0	
cycle	P	events from which exps? Prim/Second/Both
ra_targ	207.219583	Observer's specified target RA [deg]
dec_targ	26.590833	Observer's specified target Dec [deg]
ra_nom	207.19649386444	Nominal RA [deg]
dec_nom	26.594482561277	Nominal Dec [deg]
roll_nom	174.37596018367	Nominal Roll [deg]
revision	1	Processing version of data
ontime	10062.60007751	Sum of GTIs [s]
livetime	9931.1247995188	Livetime [s]
ontime2	10062.60007751	Sum of GTIs [s]
ontime3	10062.60007751	Sum of GTIs [s]
ontime5	10062.60007751	Sum of GTIs [s]
ontime6	10059.458987236	Sum of GTIs [s]
ontime7	10062.60007751	Sum of GTIs [s]
l2events	164227	Number of level 2 events



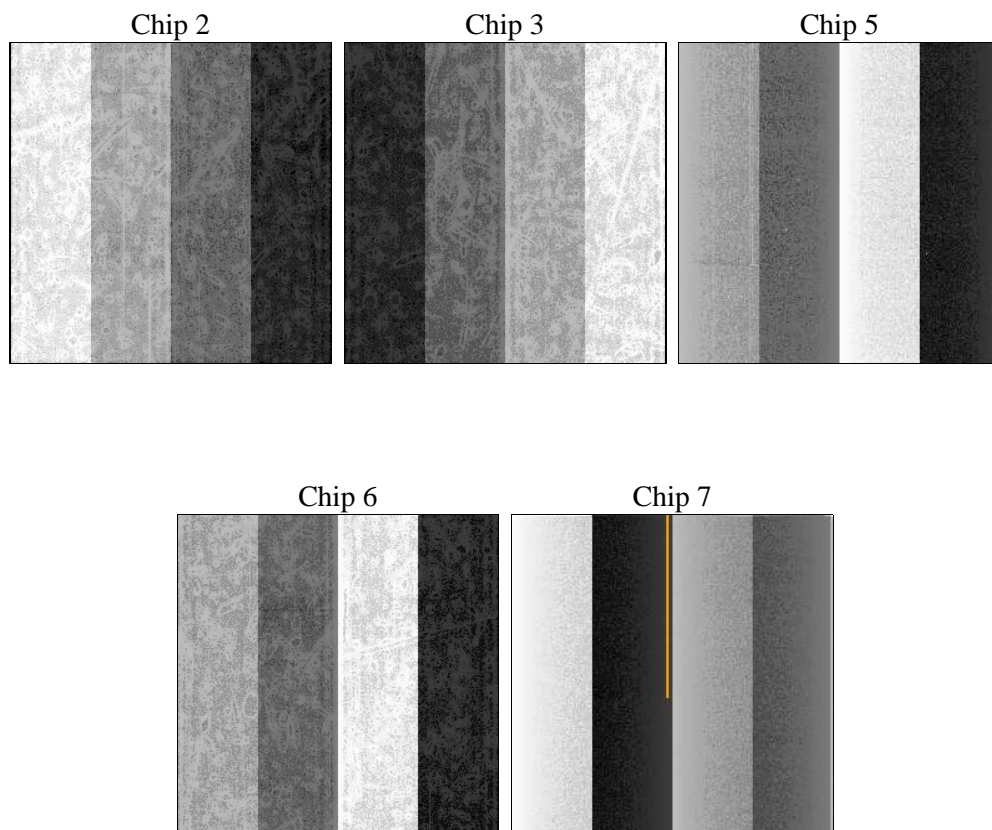
2 OBI

2.1 OBI

2.1.1 Images



2.1.2 Bias



2.1.3 Parameters

obi_num	1	Obi number	sched_exp_time	10000.000000	[s] Scheduled observation exposure time
ascdsver	10.3.3	Processing system revision	ontime	10062.60007751	Sum of GTIs [s]
caldbver	4.6.7	 	ontime2	10062.60007751	Sum of GTIs [s]
date	2015-04-16T16:40:17	Date and time of file creation	ontime3	10062.60007751	Sum of GTIs [s]
revision	1	Processing version of data	ontime5	10062.60007751	Sum of GTIs [s]
			ontime6	10059.458987236	Sum of GTIs [s]
			ontime7	10062.60007751	Sum of GTIs [s]
			l1events	386581	Number of level 1 events

2.1.4 Events

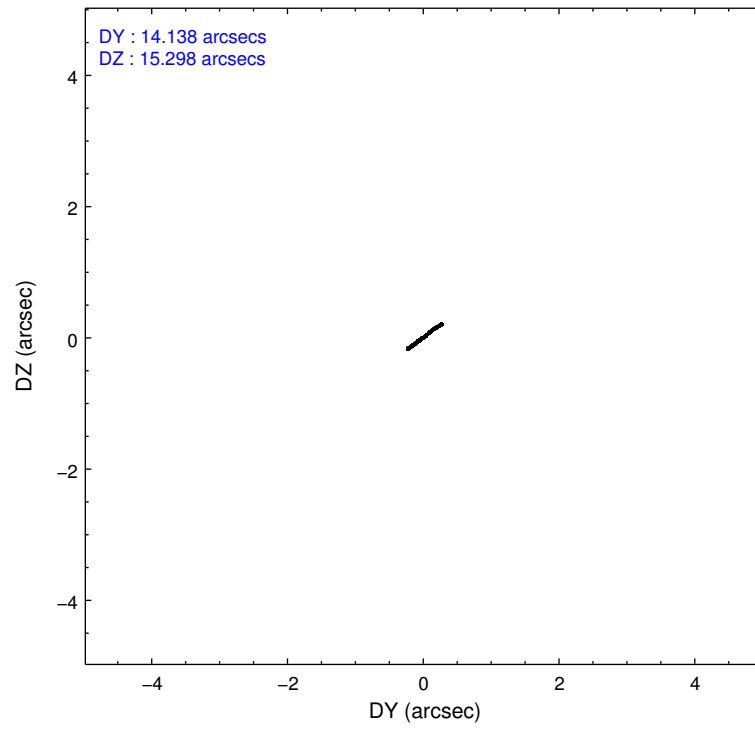
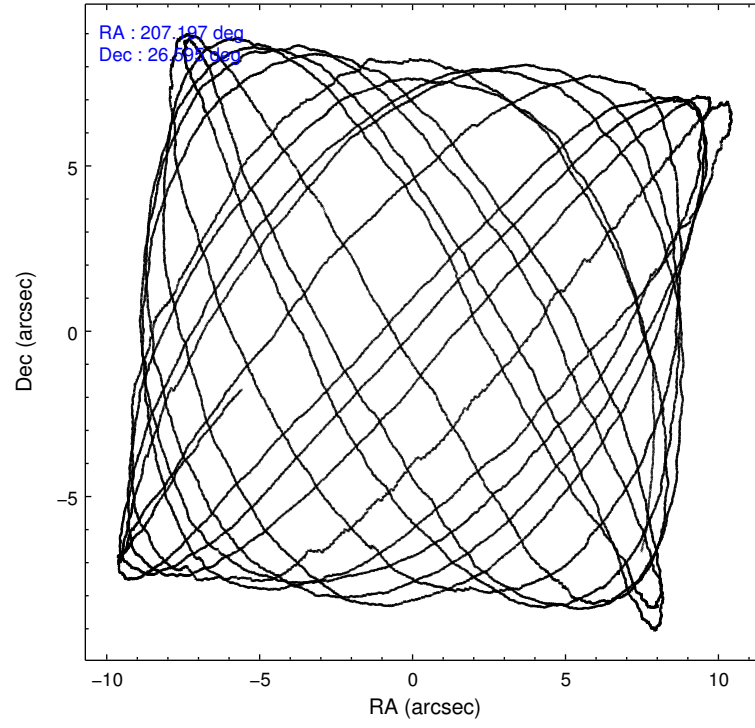
	ccd 2	ccd 3	ccd 5	ccd 6	ccd 7
level 1 events	47576	48244	87609	53096	150056
rejected events	41940	42322	43174	43065	38382
rejected %	88%	87%	49%	81%	25%

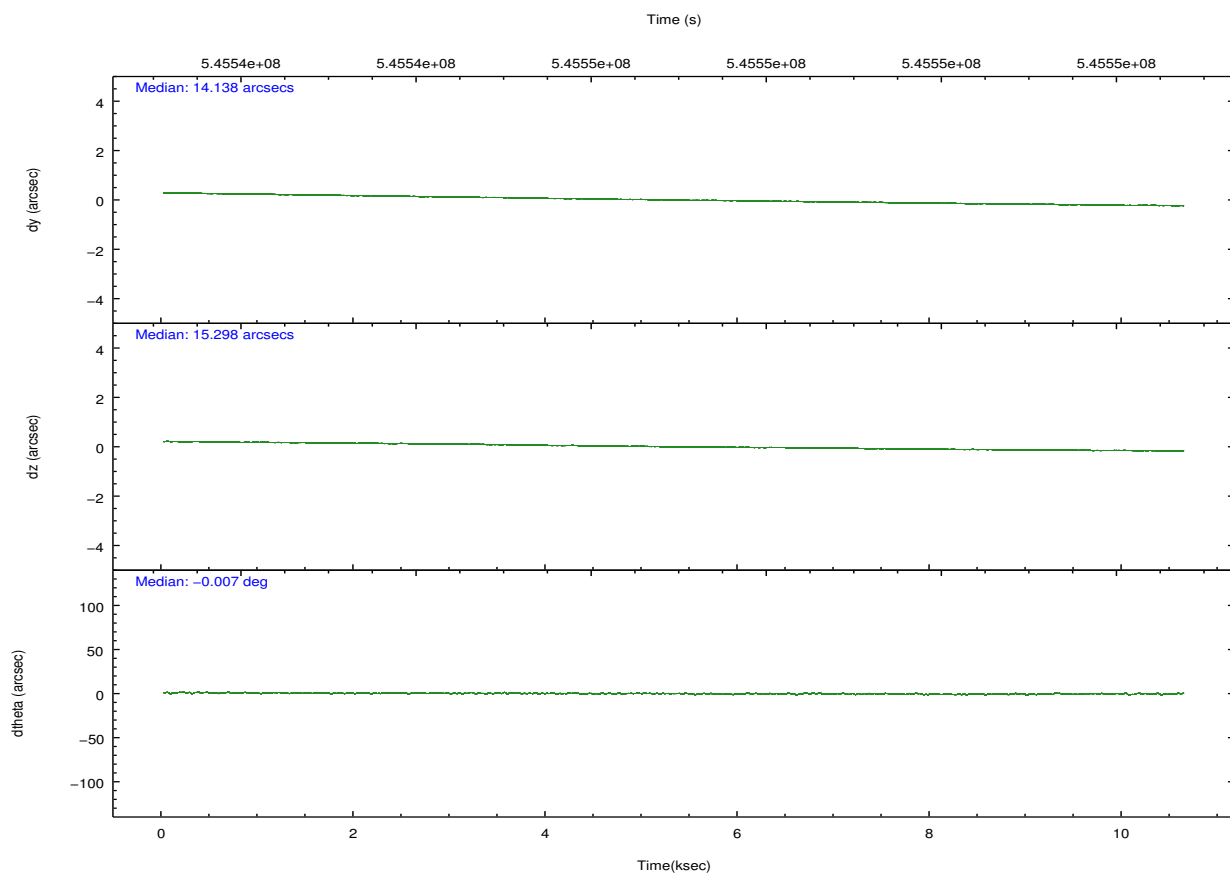
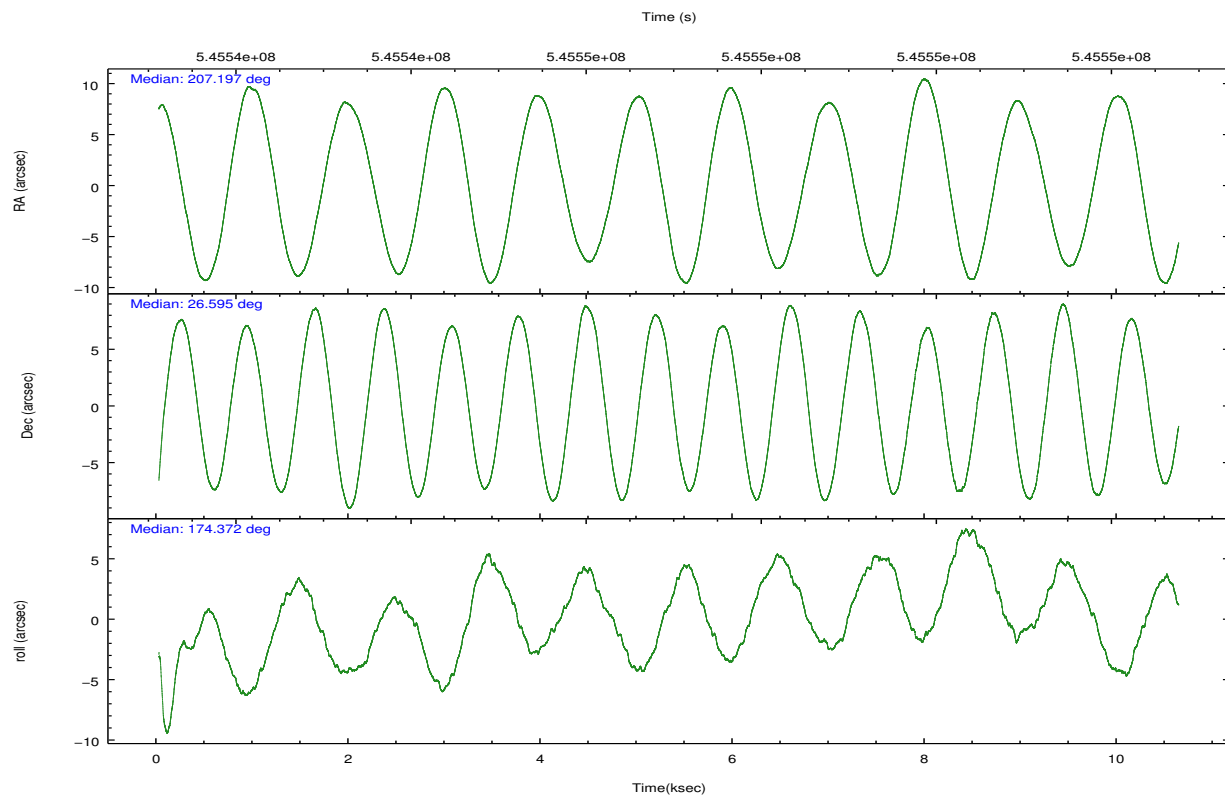
	ccd 2	ccd 3	ccd 5	ccd 6	ccd 7
grade 0 events	2316	2497	9193	5141	26617
	4%	5%	10%	9%	17%
grade 1 events	23	24	1936	28	111
	0%	0%	2%	0%	0%
grade 2 events	1224	1166	12334	1956	28047
	2%	2%	14%	3%	18%
grade 3 events	527	538	1137	664	11427
	1%	1%	1%	1%	7%
grade 4 events	514	583	1080	652	11234
	1%	1%	1%	1%	7%
grade 5 events	1960	2307	5138	2283	6668
	4%	4%	5%	4%	4%
grade 6 events	1055	1138	20698	1622	34388
	2%	2%	23%	3%	22%
grade 7 events	39957	39991	36093	40750	31564
	83%	82%	41%	76%	21%

2.2 Compared Parameters

Parameter	Planned	Actual	Parameter	Planned	Actual
Instrument	ACIS	ACIS	Obspar format version number	7	7
Detector	ACIS-23567	ACIS-23567	Obspar file type	PREDICTED	ACTUAL
Grating	NONE	NONE	Obspar update status	NONE	UPDATED
Data mode	VFAINT	VFAINT	Number of optional ACIS chips dropped	0	0
Observation mode	POINTING	POINTING	On-chip summing requested	N	N
[deg] Pointing RA	207.224321	207.1964938644374	Subarray requested	NONE	NONE
[deg] Pointing Dec	26.606151	26.59448256127742	Alternating exposures requested	N	N
[deg] Pointing Roll	174.206860	174.3759601836679	[s] Primary exposure time	0.000000	3.1
[s] Window start time (MET)	544233667.184000	544233667.184000			
[s] Window stop time (MET)	546739267.184000	546739267.184000			
[mm] SIM focus pos	-0.684267	-0.6828225247311905			
[mm] SIM defocus	0	0.001444936568705701			
[mm] SIM translation stage pos	-190.132523	-190.1400660498719			
[mm] SIM translation stage offset	0	0.00754346686406393			
[s] Observation start time (MET)	545542283.184000	545540978.63476			
Observation start date	2015-04-16T03:30:16	2015-04-16T03:09:38			
[s] Observation end time (MET)	545552283.184000	545553337.57295			
Observation end date	2015-04-16T06:16:56	2015-04-16T06:35:37			
Read mode	TIMED	TIMED			

2.3 Aspect



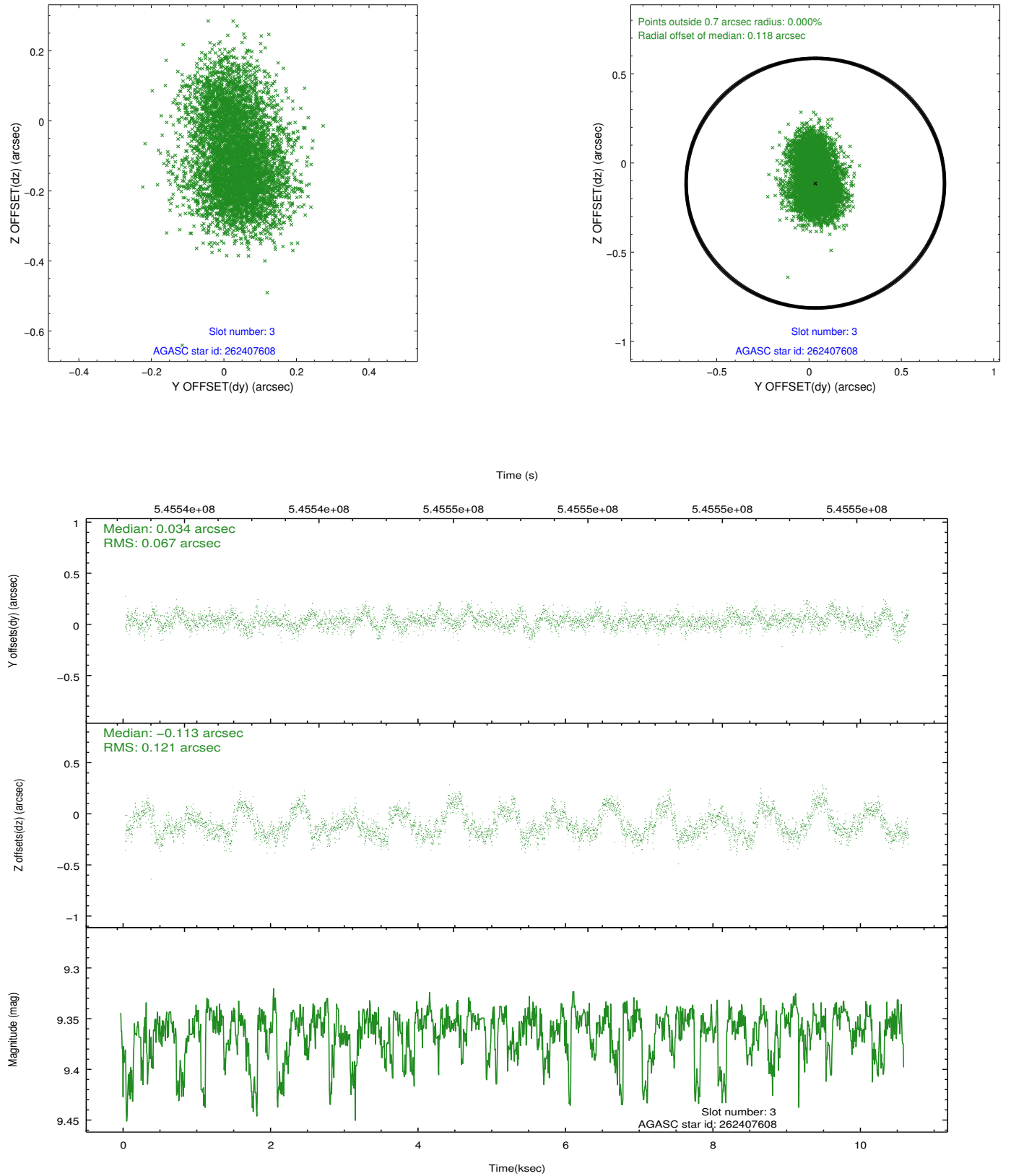


Slot Statistics

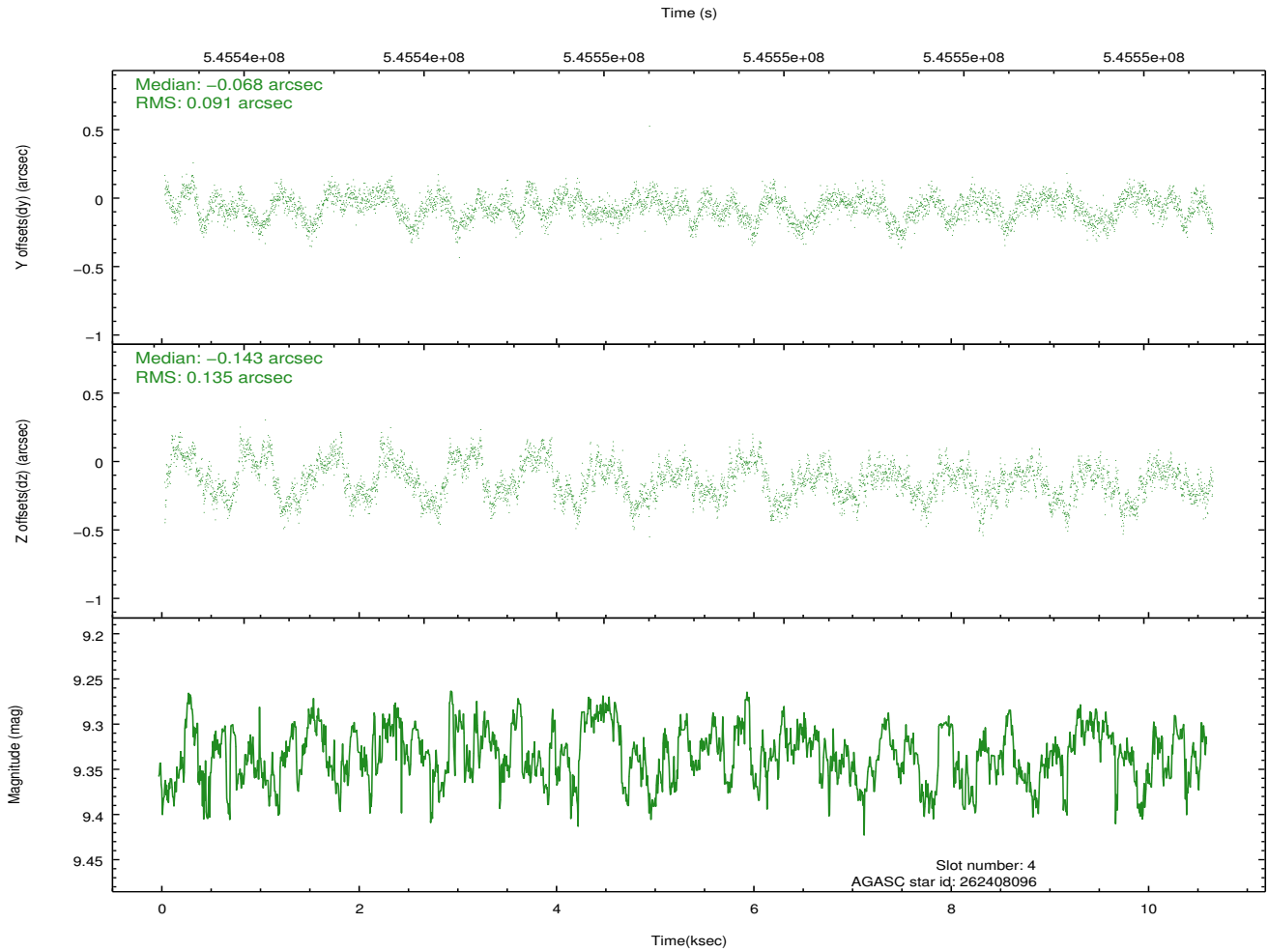
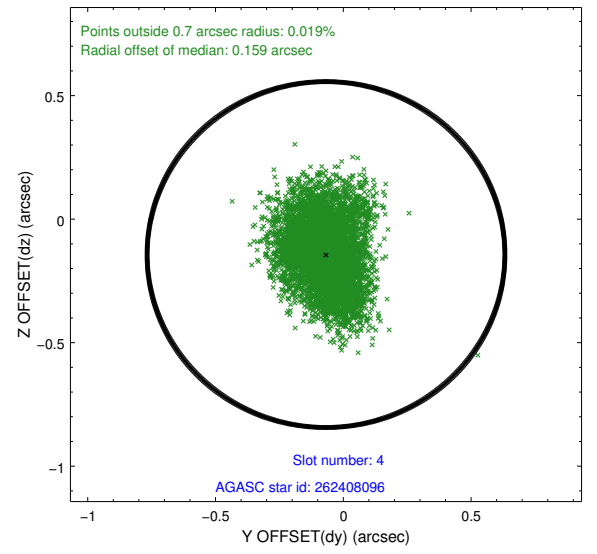
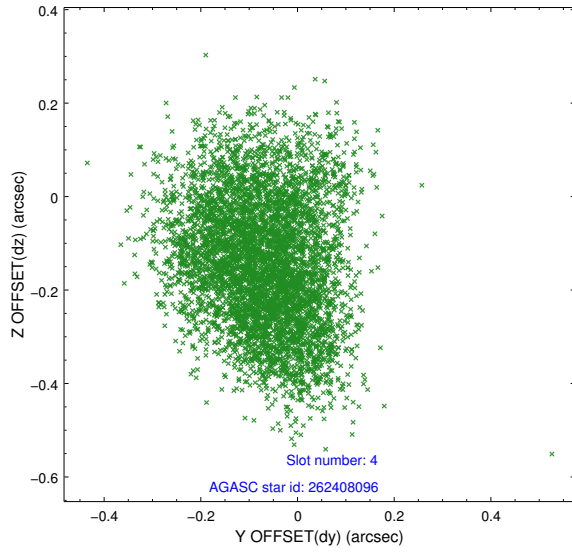
slot	status	used	id	mag	n_pts	med_dy	med_dz	dr1	dr2	ra	dec	mean_y	mean_z
0	FID		ACIS-S-1	7.23	2591	0.132	-0.092	0.010	0.016	0.000000	0.000000	929.13	-1732.39
1	FID		ACIS-S-5	7.26	2591	-0.255	0.068	0.008	0.013	0.000000	0.000000	-1820.04	164.74
2	FID		ACIS-S-6	7.38	2591	0.101	0.035	0.010	0.016	0.000000	0.000000	394.05	809.28
3	GUIDE	used	262407608	9.36	5181	0.034	-0.113	0.147	0.242	207.378401	26.435507	-555.98	560.83
4	GUIDE	used	262408096	9.33	5177	-0.068	-0.143	0.176	0.277	207.011678	26.515421	649.29	393.54
5	GUIDE	used	262408512	7.98	5182	0.003	0.157	0.094	0.153	207.800210	27.128796	-1644.77	-2062.10
6	GUIDE	used	262408936	9.64	5178	-0.080	0.056	0.151	0.250	207.154731	26.726554	266.08	-408.72
7	GUIDE	used	262409552	8.18	5181	0.115	0.031	0.149	0.226	206.584269	27.192805	2253.63	-1898.96

2.4 Star Slots

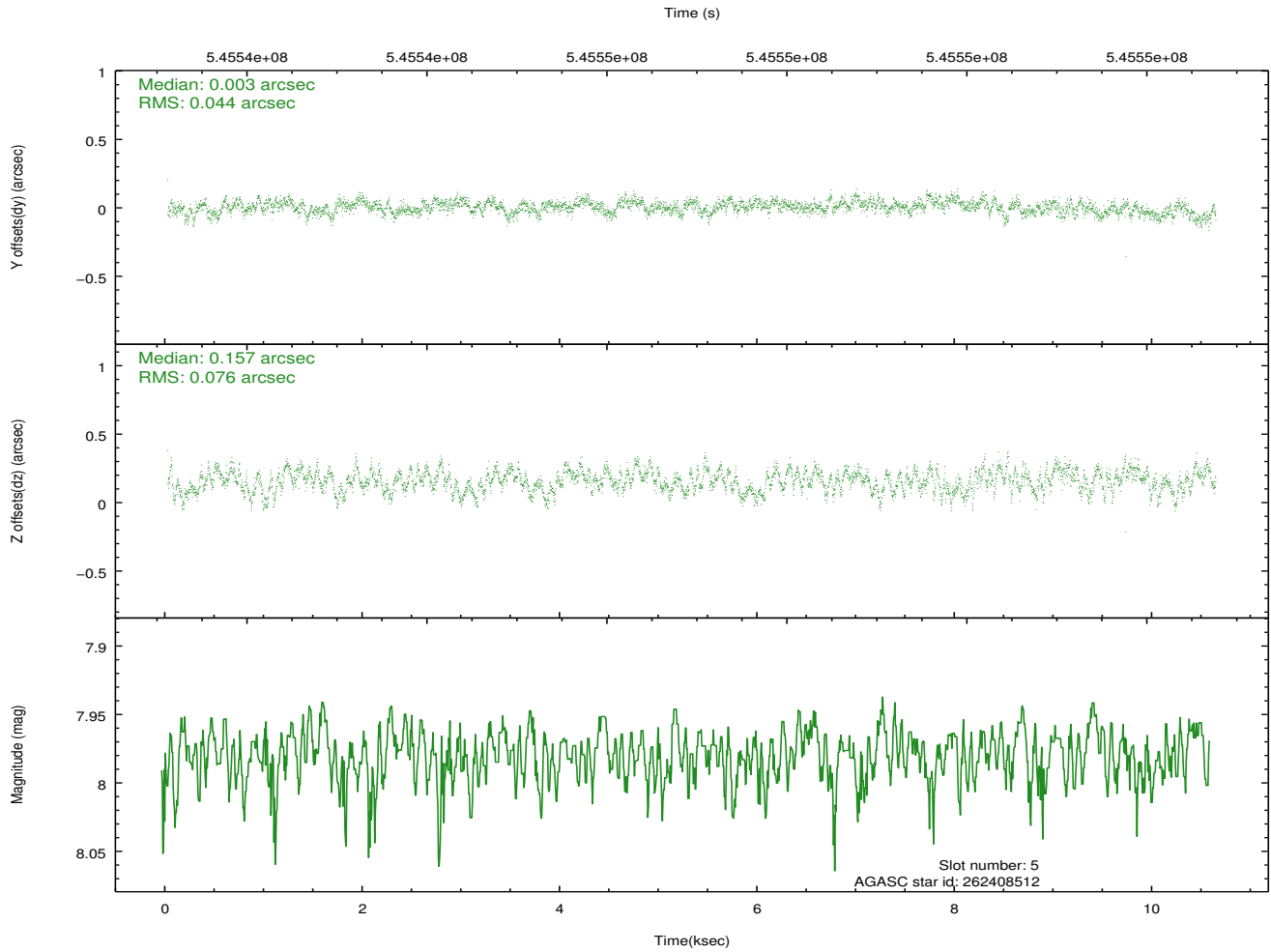
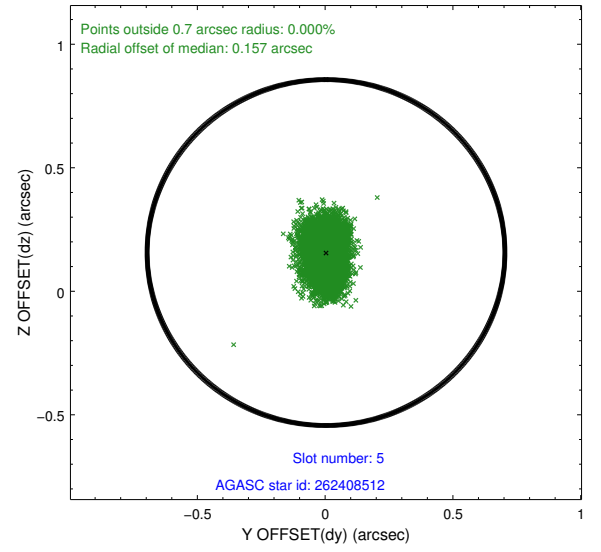
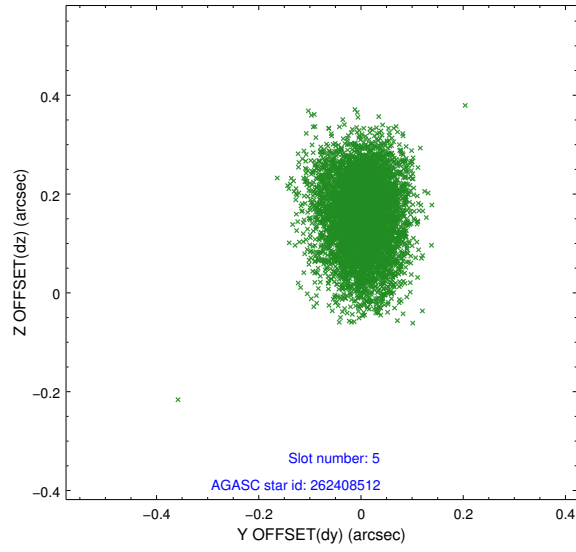
2.4.1 Slot 3



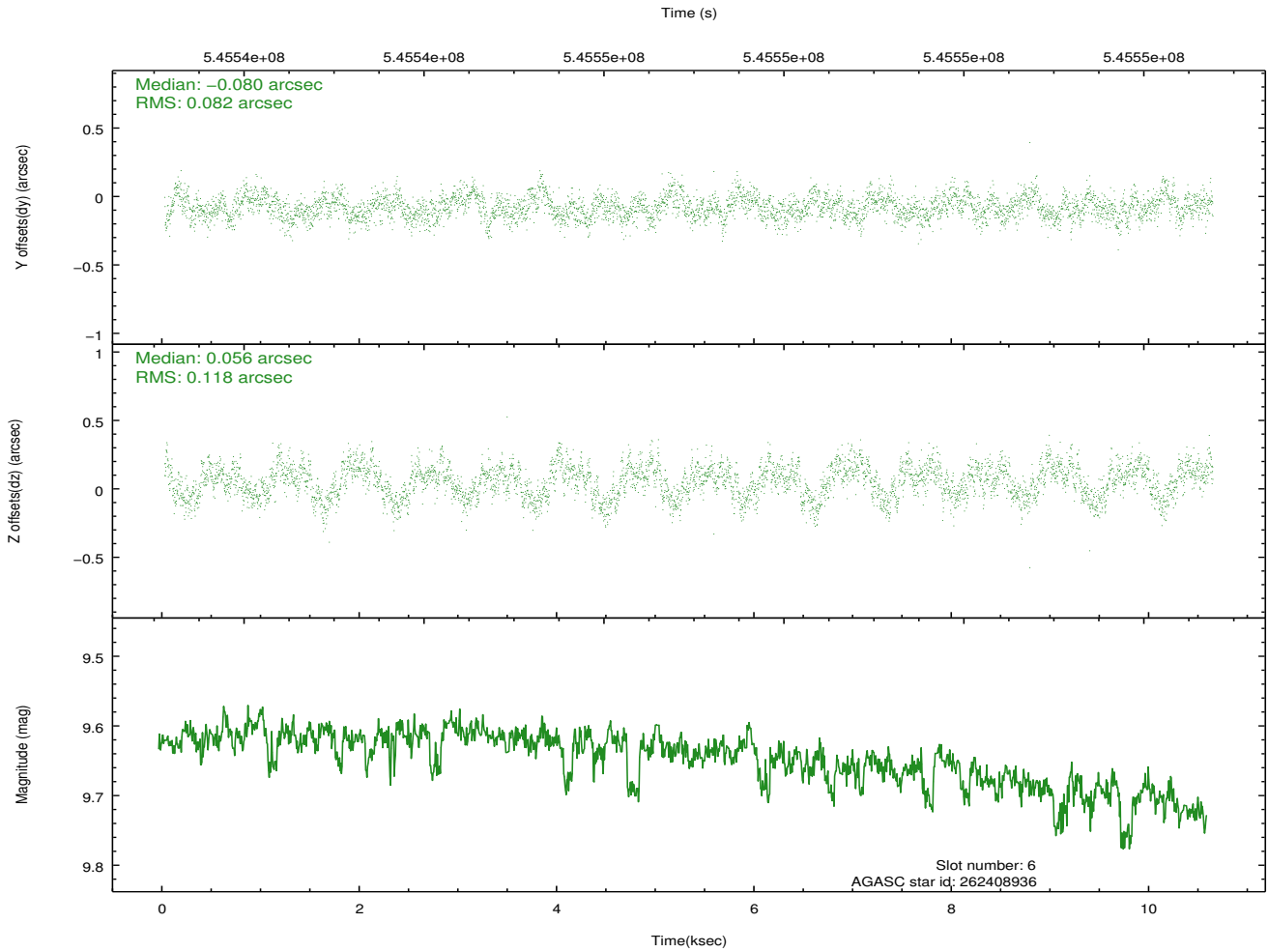
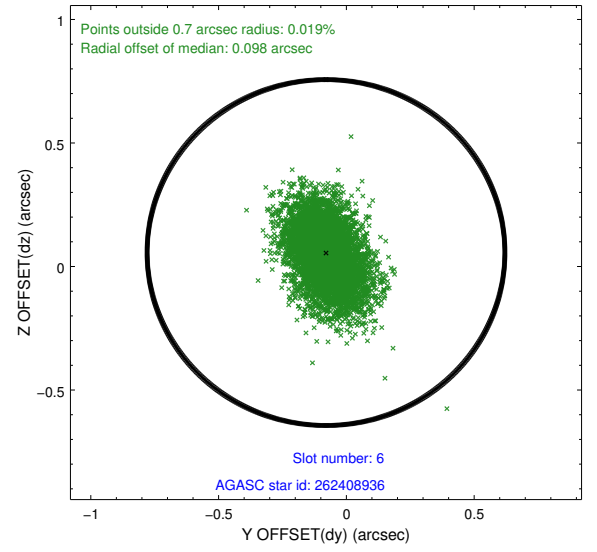
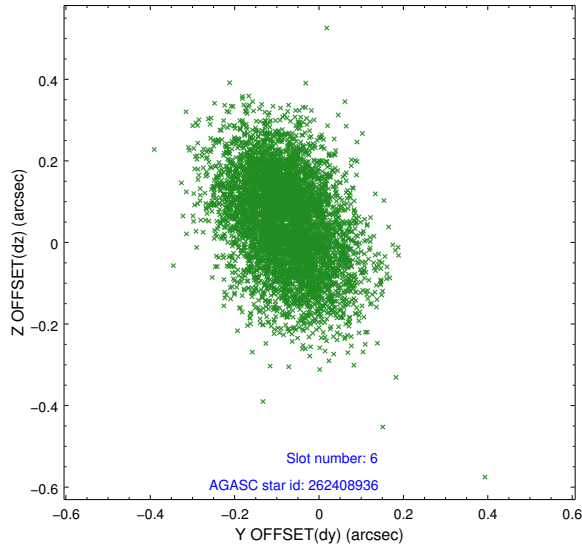
2.4.2 Slot 4



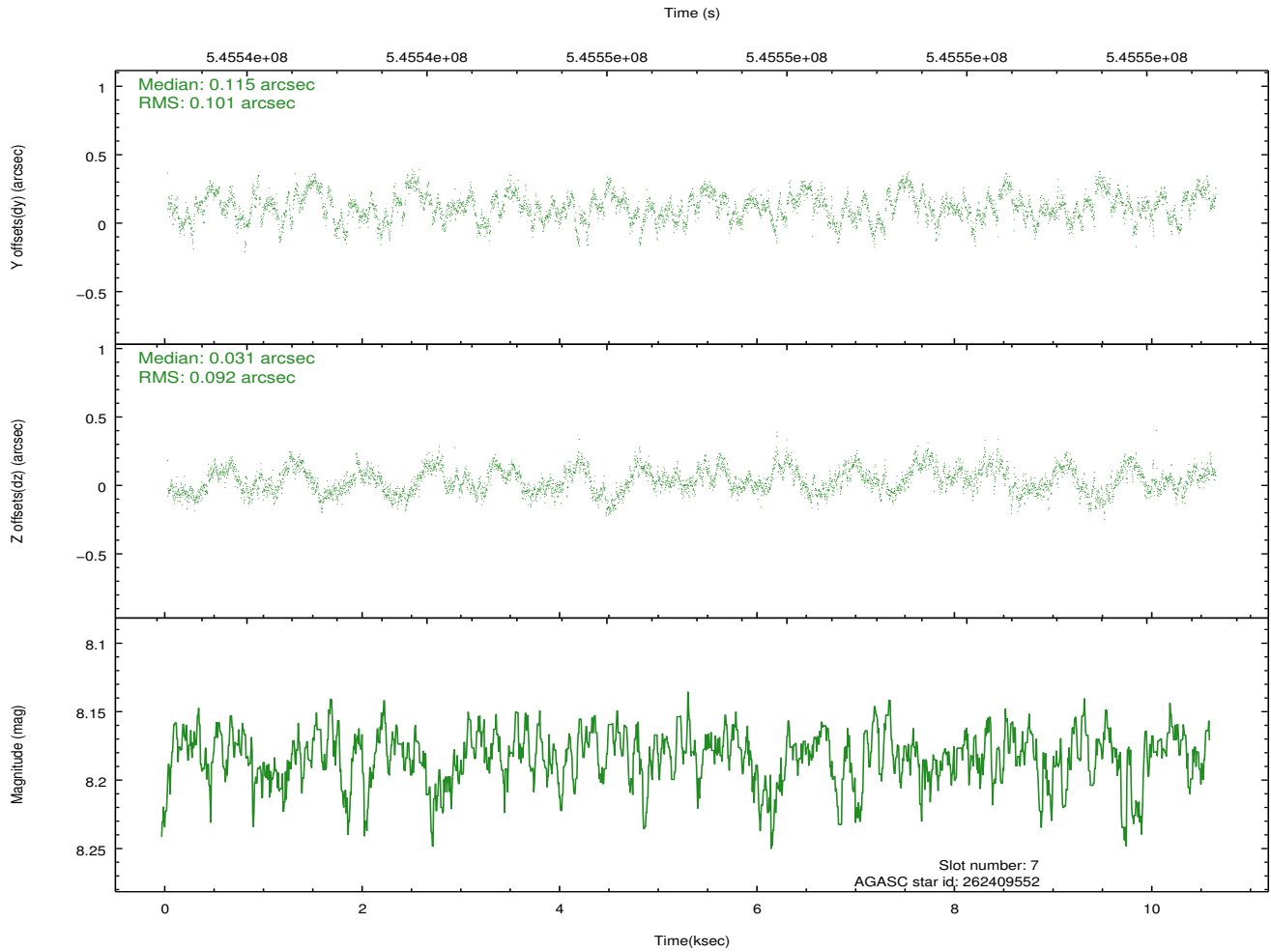
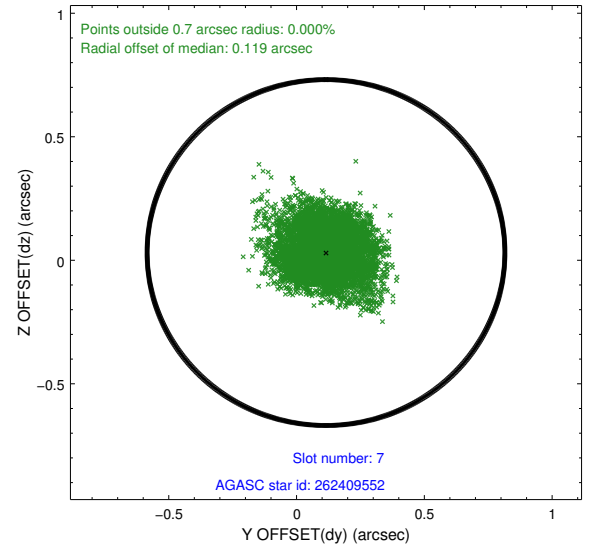
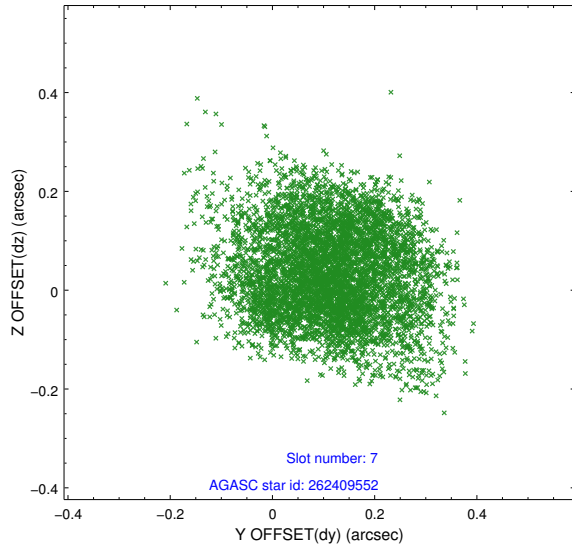
2.4.3 Slot 5



2.4.4 Slot 6

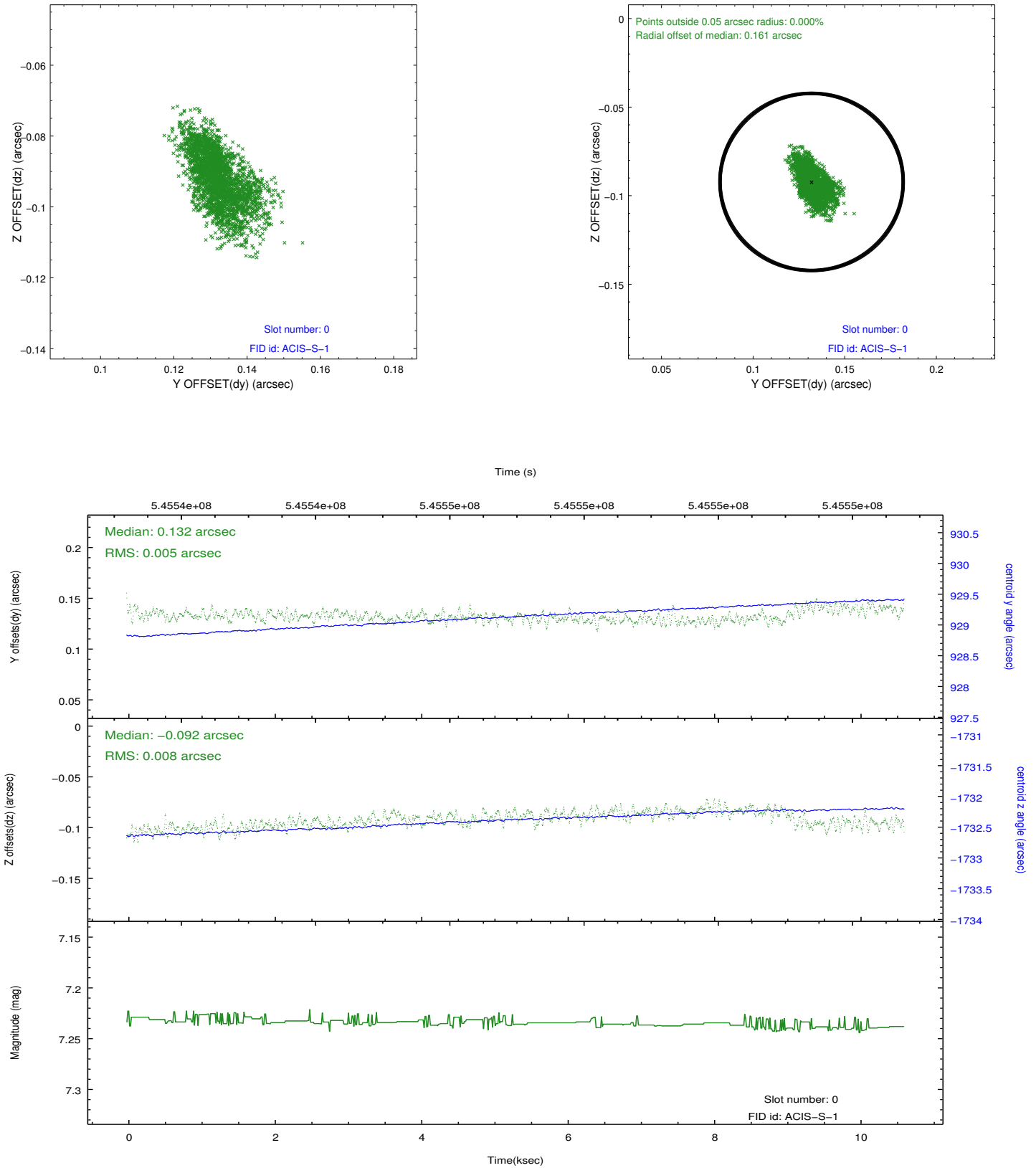


2.4.5 Slot 7

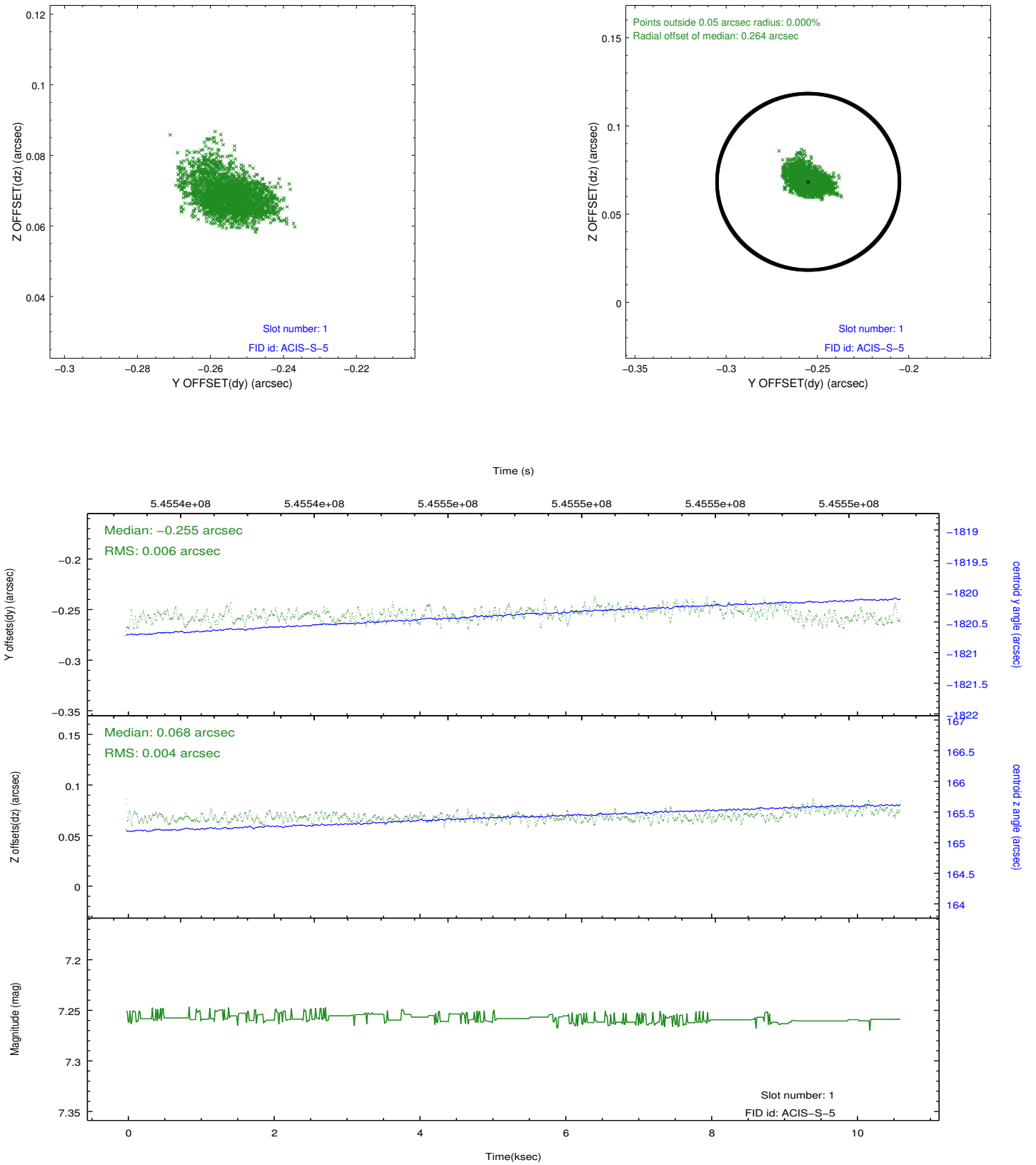


2.5 FID Slots

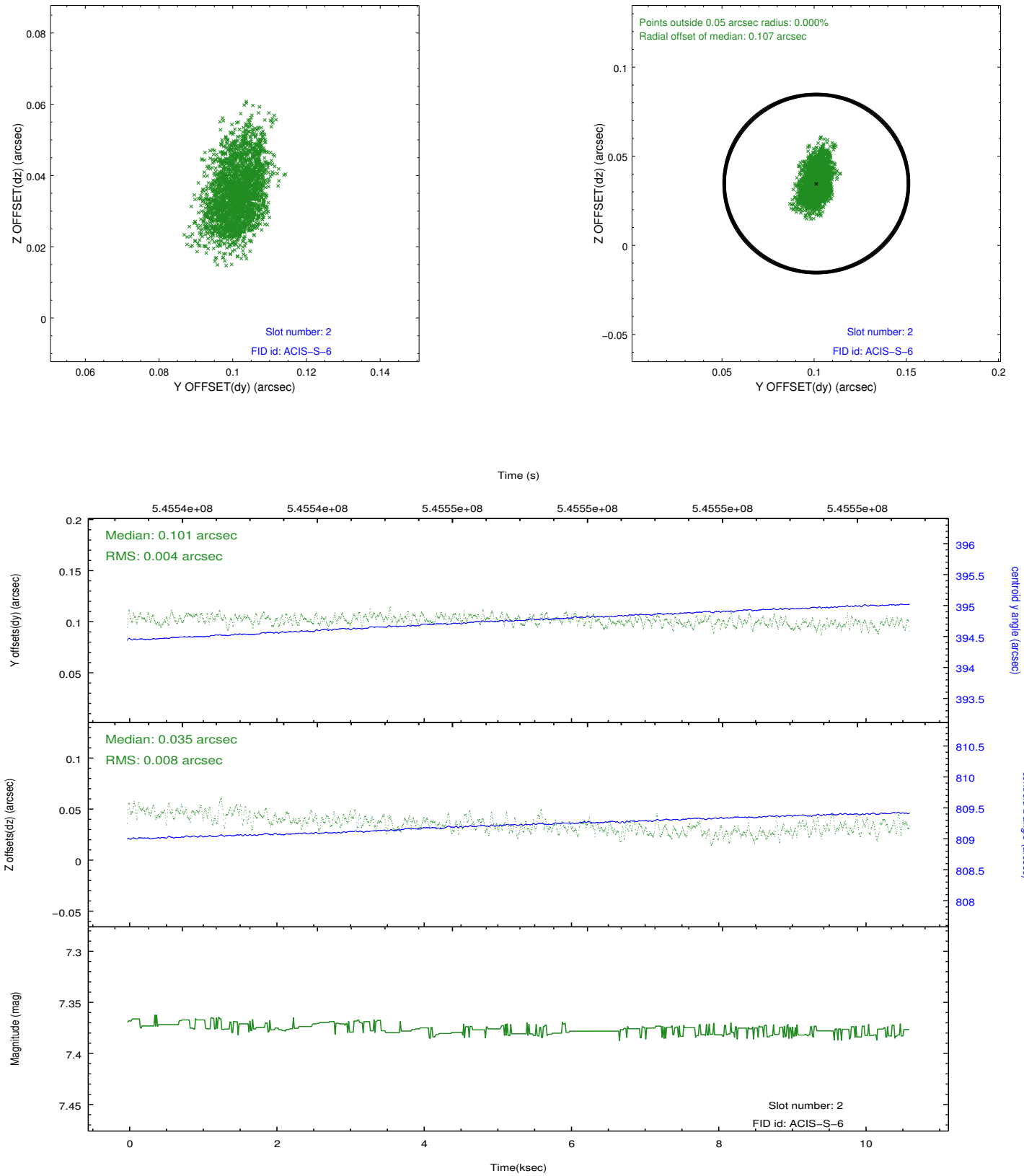
2.5.1 Slot 0



2.5.2 Slot 1



2.5.3 Slot 2



A Summary

A.1 Status

V&V Scientist	Beth Sundheim
V&V Date (YYYY-MM-DD)	2015.04.16
V&V Edition	1
V&V Disposition and Status	OK
V&V Charge Time	10.06260007751

A.2 Comments

Window preference met.