

# V&V Reference Report

## L2 ASCDS Version : 8.4.5

Observation 1727 - L2 Version 4  
Chandra X-Ray Center

L2 Processing Date : Aug 28 2012

## Contents

<b>1</b>	<b>Front</b>	<b>2</b>
<b>2</b>	<b>OBI</b>	<b>3</b>
2.1	OBI . . . . .	3
2.1.1	Images . . . . .	3
2.1.2	Bias . . . . .	3
2.1.3	Parameters . . . . .	4
2.1.4	Events . . . . .	4
2.2	Compared Parameters . . . . .	5
2.3	Aspect . . . . .	6
2.4	Star Slots . . . . .	9
2.4.1	Slot 3 . . . . .	9
2.4.2	Slot 4 . . . . .	10
2.4.3	Slot 5 . . . . .	11
2.4.4	Slot 6 . . . . .	12
2.4.5	Slot 7 . . . . .	13
2.5	FID Slots . . . . .	14
2.5.1	Slot 0 . . . . .	14
2.5.2	Slot 1 . . . . .	15
2.5.3	Slot 2 . . . . .	16
<b>A</b>	<b>Summary</b>	<b>17</b>
A.1	Status . . . . .	17
A.2	Comments . . . . .	17

# 1 Front

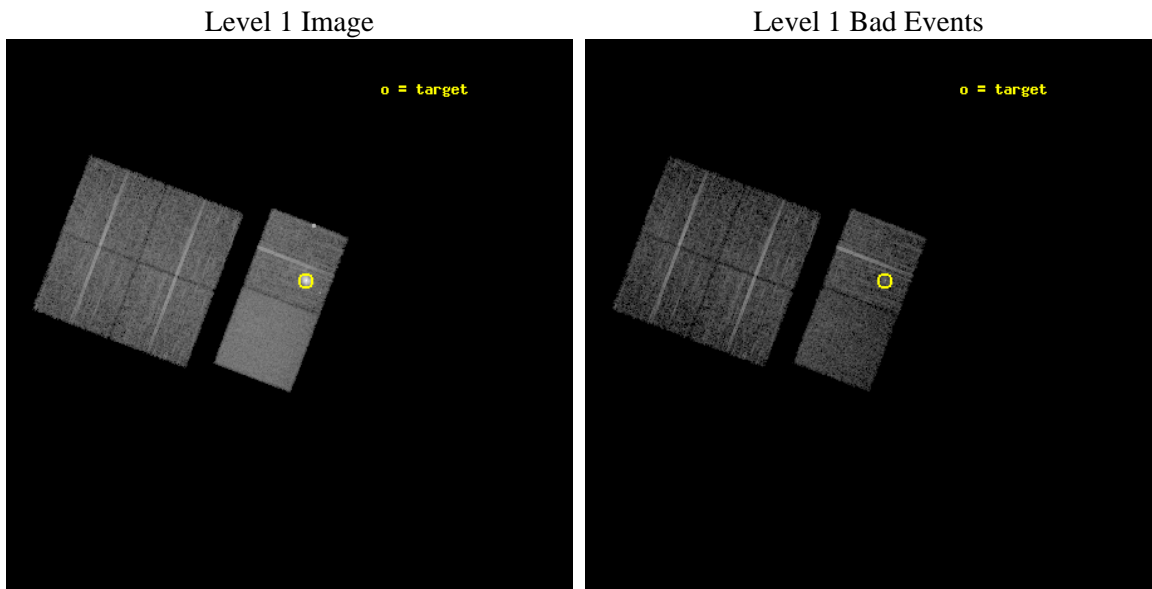
seq_num	590180	Sequence number
obs_id	1727	Observation id
title	HRC RESPONSE TO CONTINUUM SOURCE.	Proposal title
observer	Dr. CXC Calibration	Principal investigator
object	G21.5-0.9 [Chip S2, T=120, Offsets=5,0,1]	Source name
dtcycle	0	&#160
cycle	P	events from which exps? Prim/Second/Both
ra_targ	278.389583	Observer's specified target RA [deg]
dec_targ	-10.568528	Observer's specified target Dec [deg]
ra_nom	278.41955783359	Nominal RA [deg]
dec_nom	-10.641828682041	Nominal Dec [deg]
roll_nom	110.76251392119	Nominal Roll [deg]
revision	4	Processing version of data
ontime	7839.0626363307	Sum of GTIs [s]
livetime	7739.7997051127	Livetime [s]
ontime0	7839.1447163373	Sum of GTIs [s]
ontime1	7838.9395163357	Sum of GTIs [s]
ontime2	7838.980556339	Sum of GTIs [s]
ontime3	7839.0215963423	Sum of GTIs [s]
ontime6	7839.0626363307	Sum of GTIs [s]
ontime7	7839.103676334	Sum of GTIs [s]
l2events	104517	Number of level 2 events



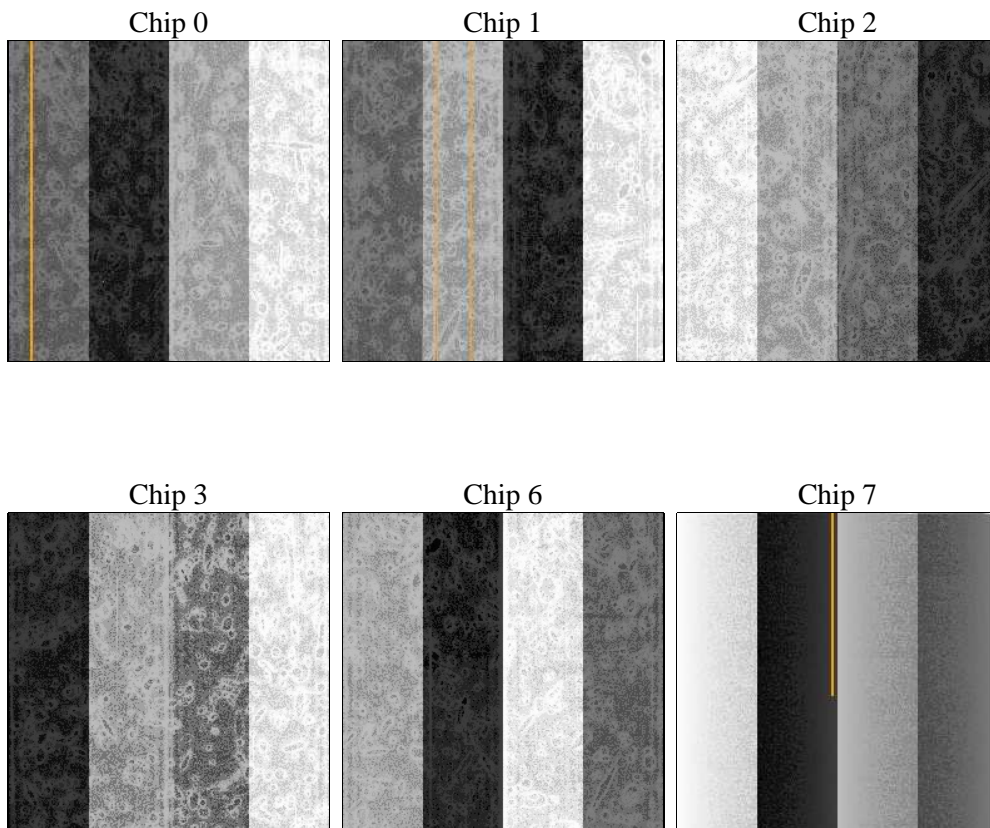
## 2 OBI

### 2.1 OBI

#### 2.1.1 Images



#### 2.1.2 Bias



### 2.1.3 Parameters

obi_num	0	Obi number	sched_exp_time	8000.000000	[s] Scheduled observation exposure time
ascdsver	8.4.5	Processing system revision	ontime	7839.0626363307	Sum of GTIs [s]
caldsver	4.5.1.1	&#160	ontime0	7839.1447163373	Sum of GTIs [s]
date	2012-08-28T04:45:19	Date and time of file creation	ontime1	7838.9395163357	Sum of GTIs [s]
revision	4	Processing version of data	ontime2	7838.980556339	Sum of GTIs [s]
			ontime3	7839.0215963423	Sum of GTIs [s]
			ontime6	7839.0626363307	Sum of GTIs [s]
			ontime7	7839.103676334	Sum of GTIs [s]
			l1events	352067	Number of level 1 events

### 2.1.4 Events

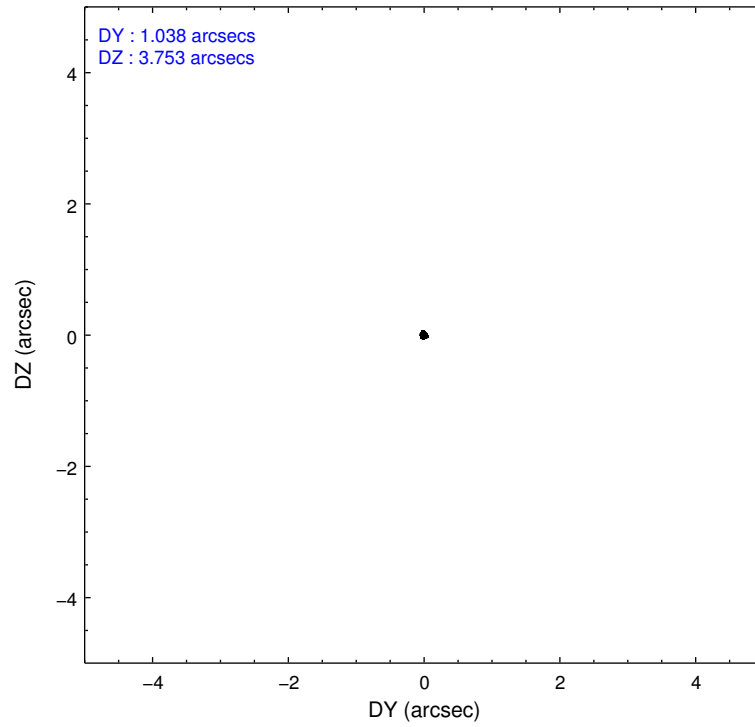
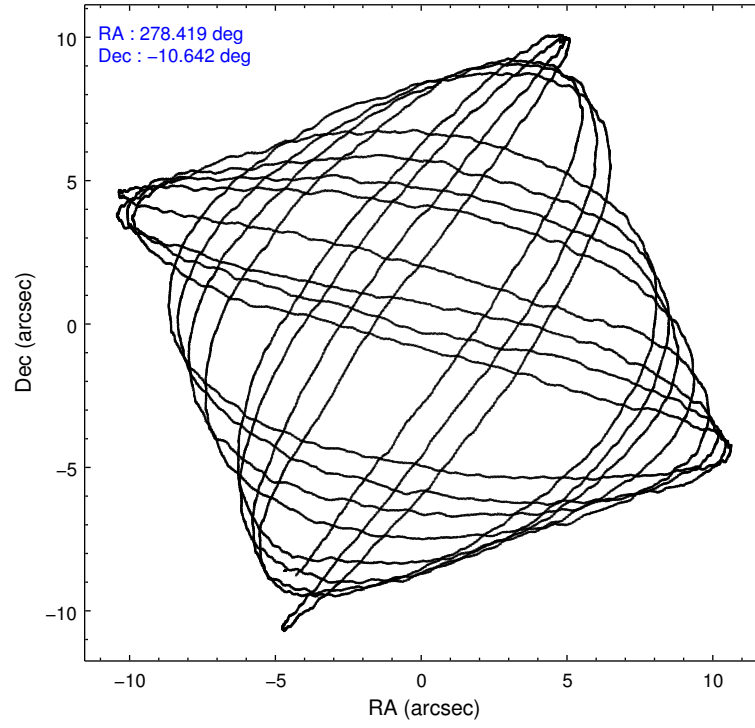
	ccd 0	ccd 1	ccd 2	ccd 3	ccd 6	ccd 7		ccd 0	ccd 1	ccd 2	ccd 3	ccd 6	ccd 7
level 1 events	45429	44350	48862	48666	81385	83375	grade 0 events	3438	3565	3580	3463	24760	5437
rejected events	38644	37256	42027	41850	46132	33345		7%	8%	7%	7%	30%	6%
rejected %	85%	84%	86%	85%	56%	39%	grade 1 events	29	20	23	23	184	64
								0%	0%	0%	0%	0%	0%
							grade 2 events	1340	1332	1291	1293	4718	9017
								2%	3%	2%	2%	5%	10%
							grade 3 events	540	612	500	557	1699	4166
								1%	1%	1%	1%	2%	4%
							grade 4 events	475	596	520	548	1688	4046
								1%	1%	1%	1%	2%	4%
							grade 5 events	1663	1612	1580	1666	1871	5375
								3%	3%	3%	3%	2%	6%
							grade 6 events	996	992	945	959	2410	27381
								2%	2%	1%	1%	2%	32%
							grade 7 events	36948	35621	40423	40157	44055	27889
								81%	80%	82%	82%	54%	33%

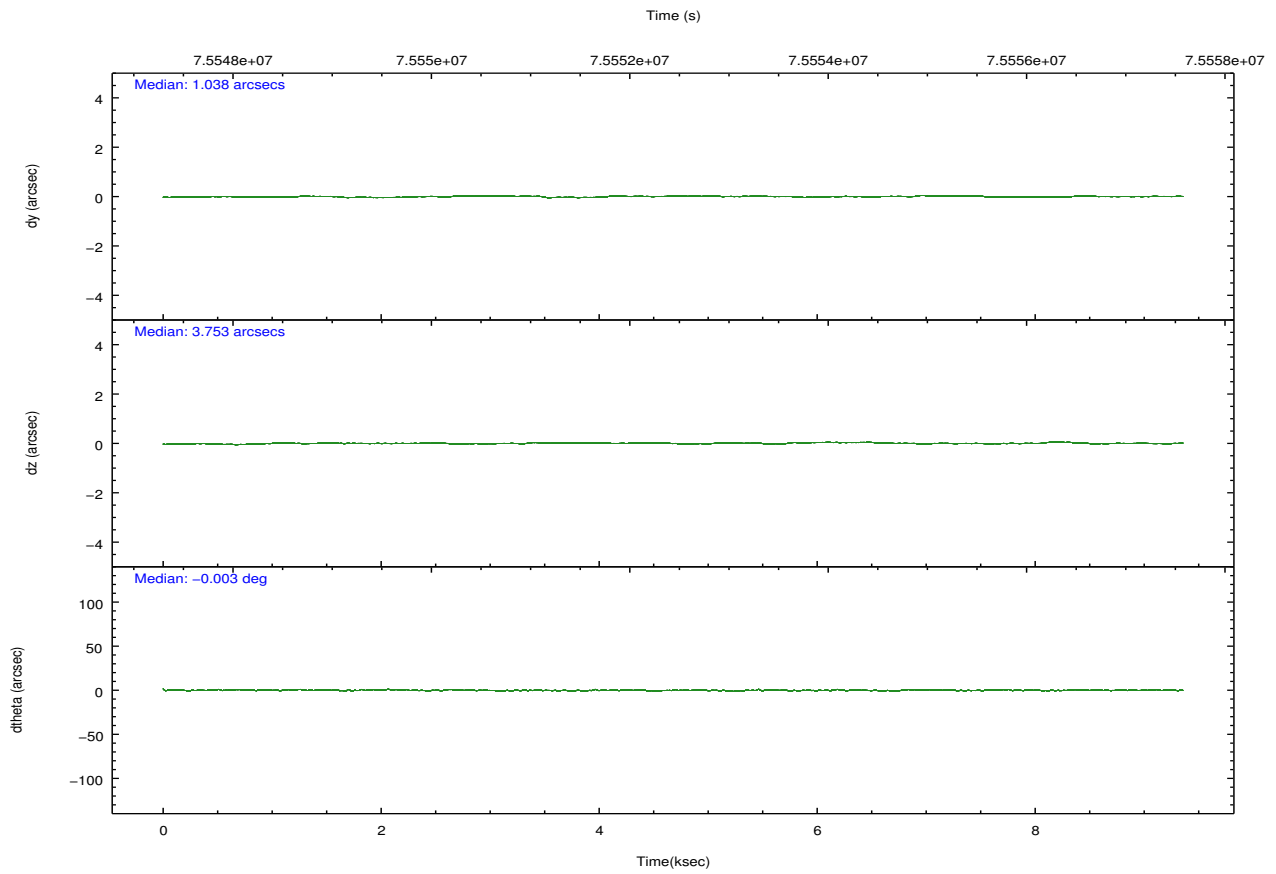
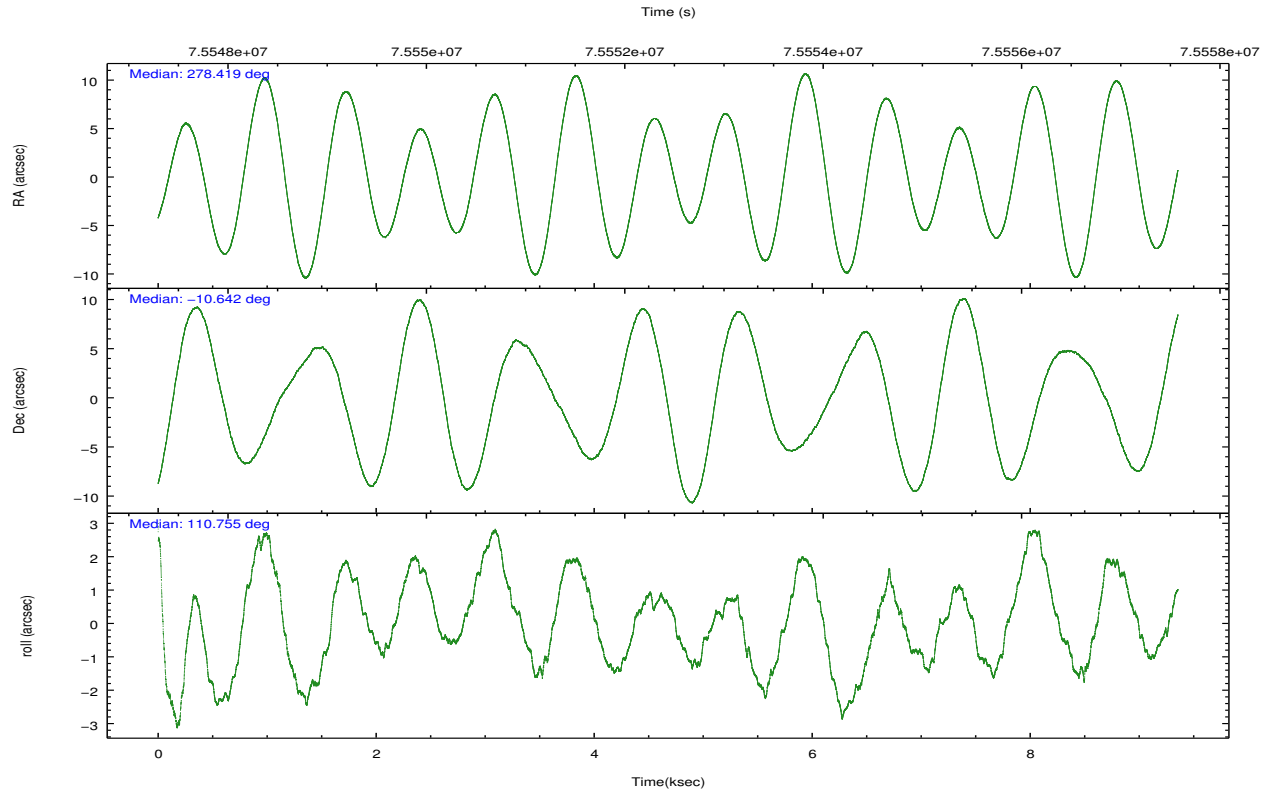


## 2.2 Compared Parameters

Parameter	Planned	Actual	Parameter	Planned	Actual
Instrument	ACIS	ACIS	Obspar format version number	7	7
Detector	ACIS-012367	ACIS-012367	Obspar file type	PREDICTED	ACTUAL
Grating	NONE	NONE	Obspar update status	NONE	UPDATED
Data mode	FAINT	FAINT	Number of optional ACIS chips dropped	0	0
Observation mode	POINTING	POINTING	On-chip summing requested	N	N
[deg] Pointing RA	278.441264	278.419557833593	Subarray requested	NONE	NONE
[deg] Pointing Dec	-10.659109	-10.64182868204123	Alternating exposures requested	N	N
[deg] Pointing Roll	110.609892	110.7625139211889	[s] Primary exposure time	0.000000	3.2
[mm] SIM focus pos	-0.684267	-0.6828225247311905			
[mm] SIM defocus	0	0.001444936568705701			
[mm] SIM translation stage pos	-185.067123	-185.0737207172285			
[mm] SIM translation stage offset	-5.0654	-5.058801865779316			
[s] Observation start time (MET)	75549115.184000	75547574.257581			
Observation start date	2000-05-24T09:50:51	2000-05-24T09:26:14			
[s] Observation end time (MET)	75557115.184000	75557249.23293699			
Observation end date	2000-05-24T12:04:11	2000-05-24T12:07:29			
Read mode	TIMED	TIMED			

## 2.3 Aspect



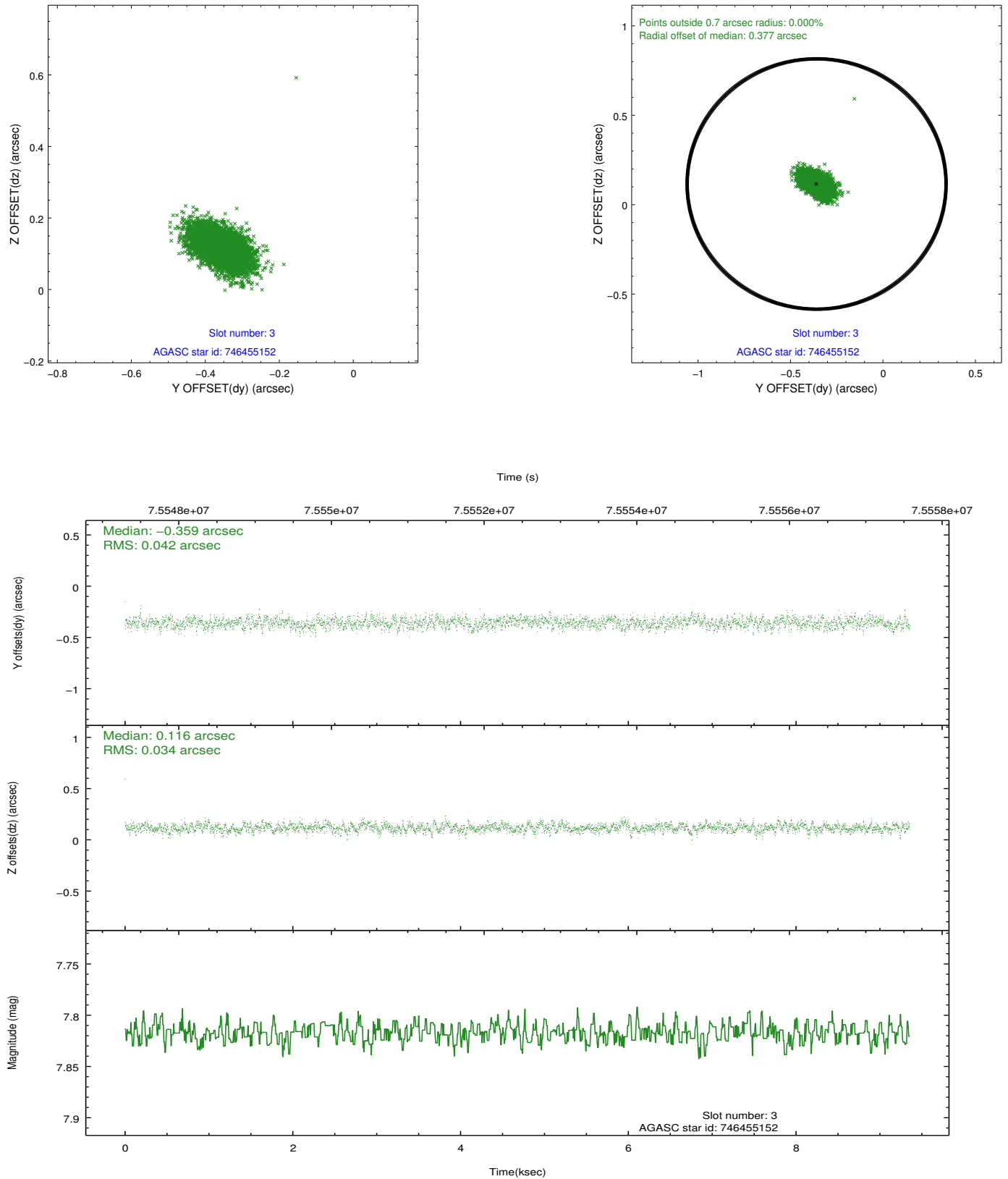


### Slot Statistics

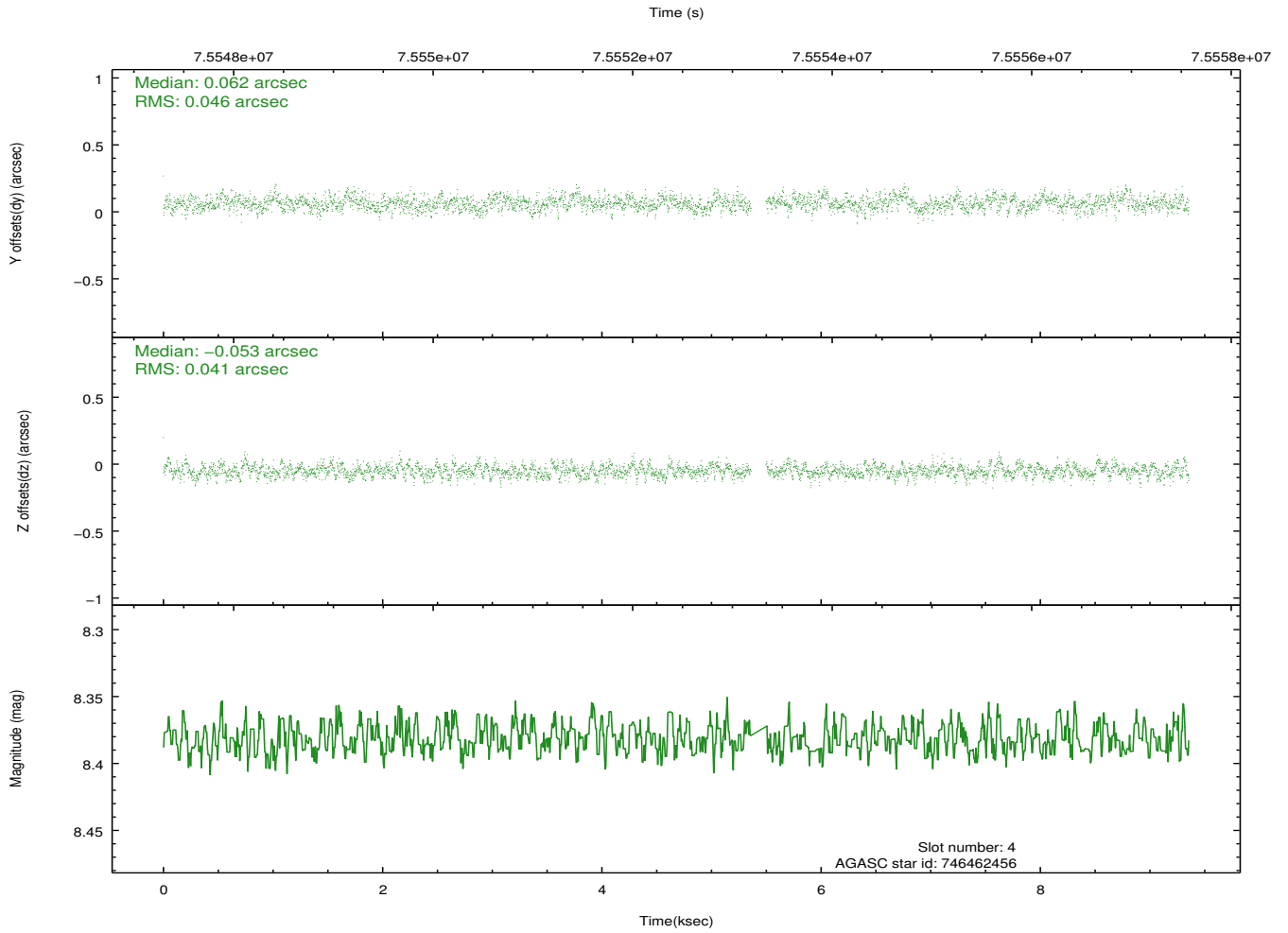
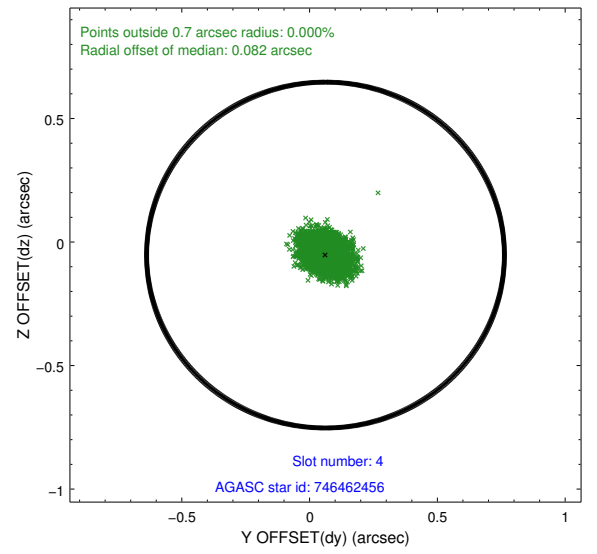
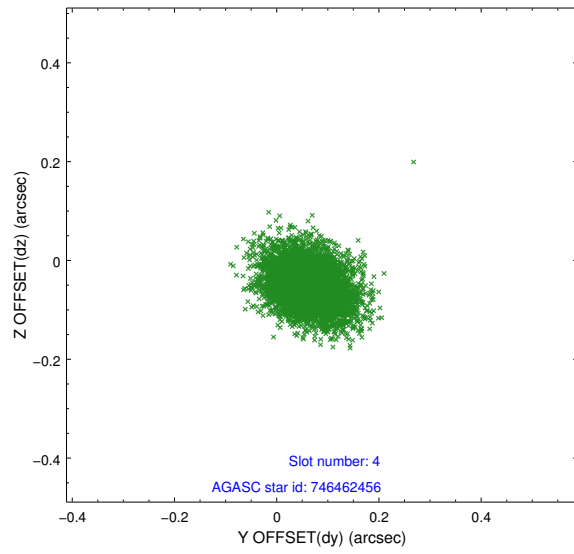
slot	status	id	mag	n_pts	med_dy	med_dz	dr1	dr2	ra	dec	mean_y	mean_z
0	FID	ACIS-S-2	7.10	2282	-0.034	-0.091	0.008	0.013	0.000000	0.000000	-753.35	-1829.21
1	FID	ACIS-S-4	7.19	2282	0.037	0.041	0.006	0.010	0.000000	0.000000	2159.79	78.68
2	FID	ACIS-S-5	7.23	2282	-0.035	0.059	0.008	0.013	0.000000	0.000000	-1805.40	73.13
3	GUIDE	746455152	7.82	4565	-0.359	0.116	0.056	0.096	278.447893	-9.976732	2290.48	-886.62
4	GUIDE	746462456	8.38	4496	0.062	-0.053	0.065	0.106	278.652171	-10.530173	171.86	-862.48
5	GUIDE	746462392	8.54	4563	0.074	0.081	0.079	0.124	279.038421	-10.890715	-1525.57	-1682.35
6	GUIDE	746455112	8.93	4564	0.011	0.108	0.071	0.117	278.266531	-10.703234	67.98	633.96
7	GUIDE	746995400	9.54	4563	0.216	-0.251	0.106	0.171	278.078957	-11.289885	-1676.34	1996.27

## 2.4 Star Slots

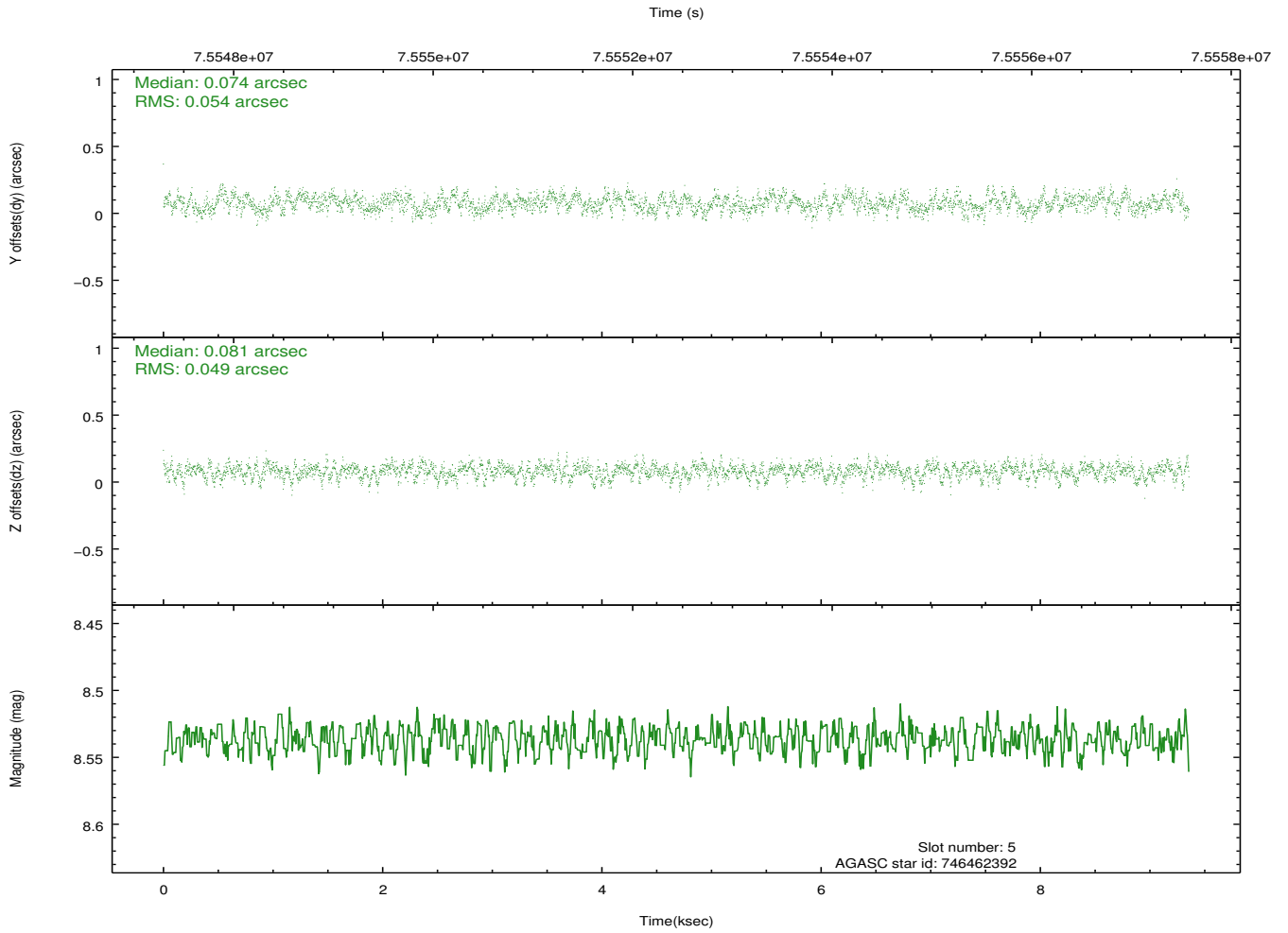
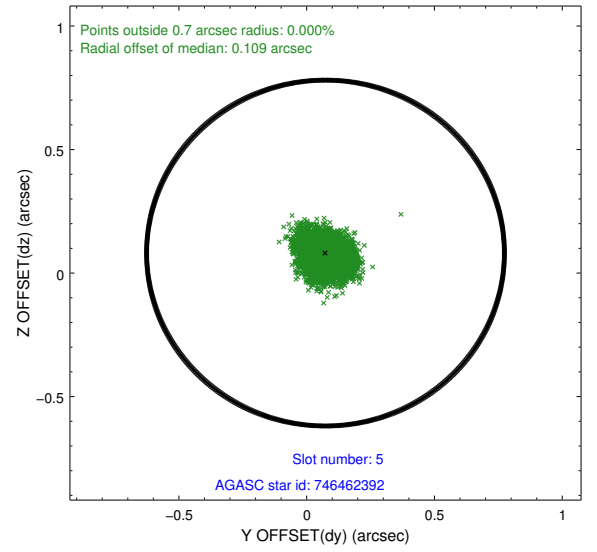
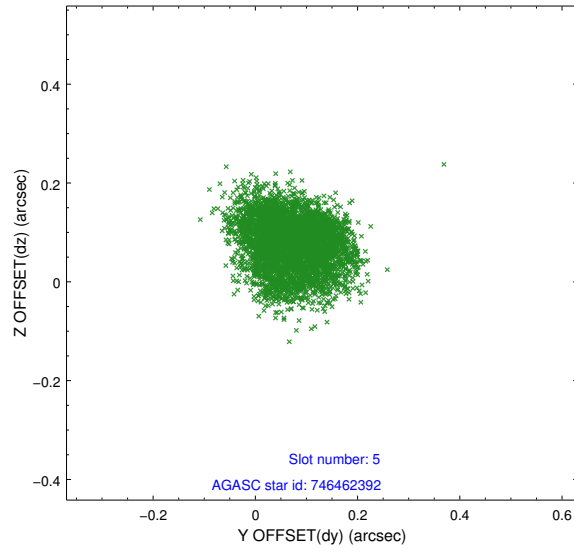
### 2.4.1 Slot 3



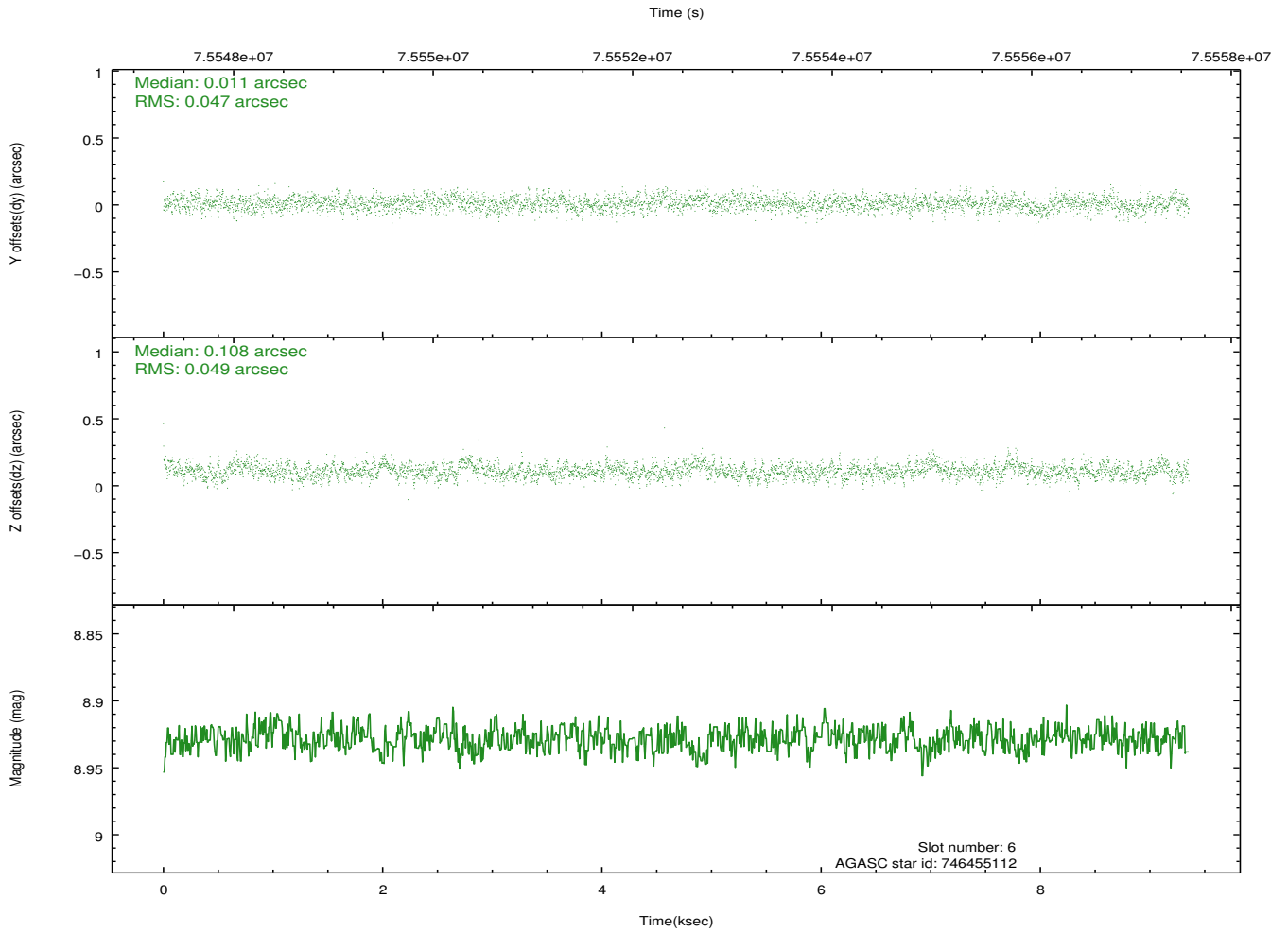
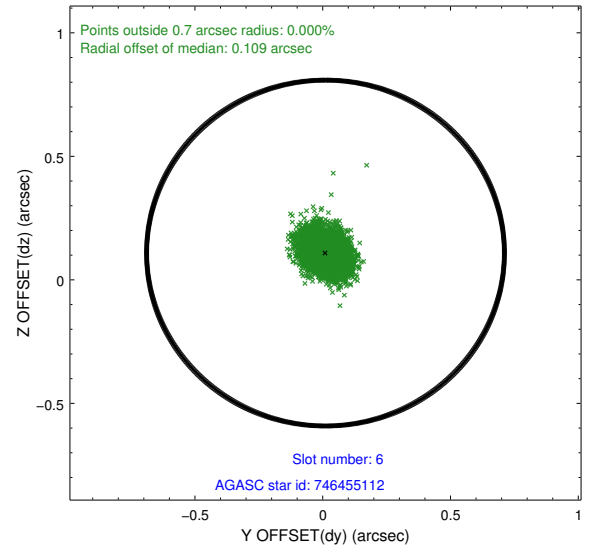
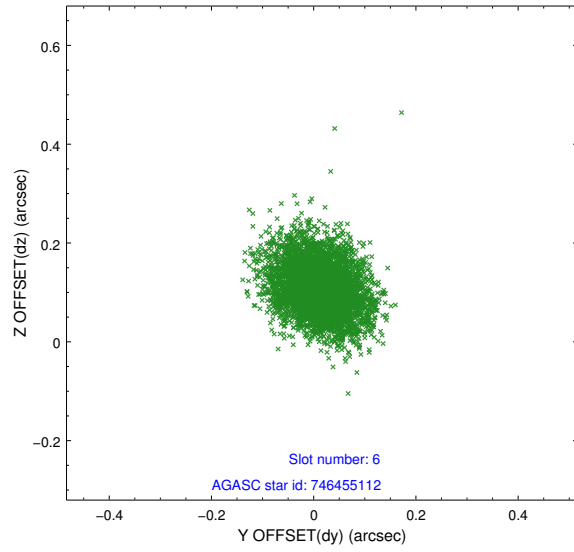
## 2.4.2 Slot 4



### 2.4.3 Slot 5

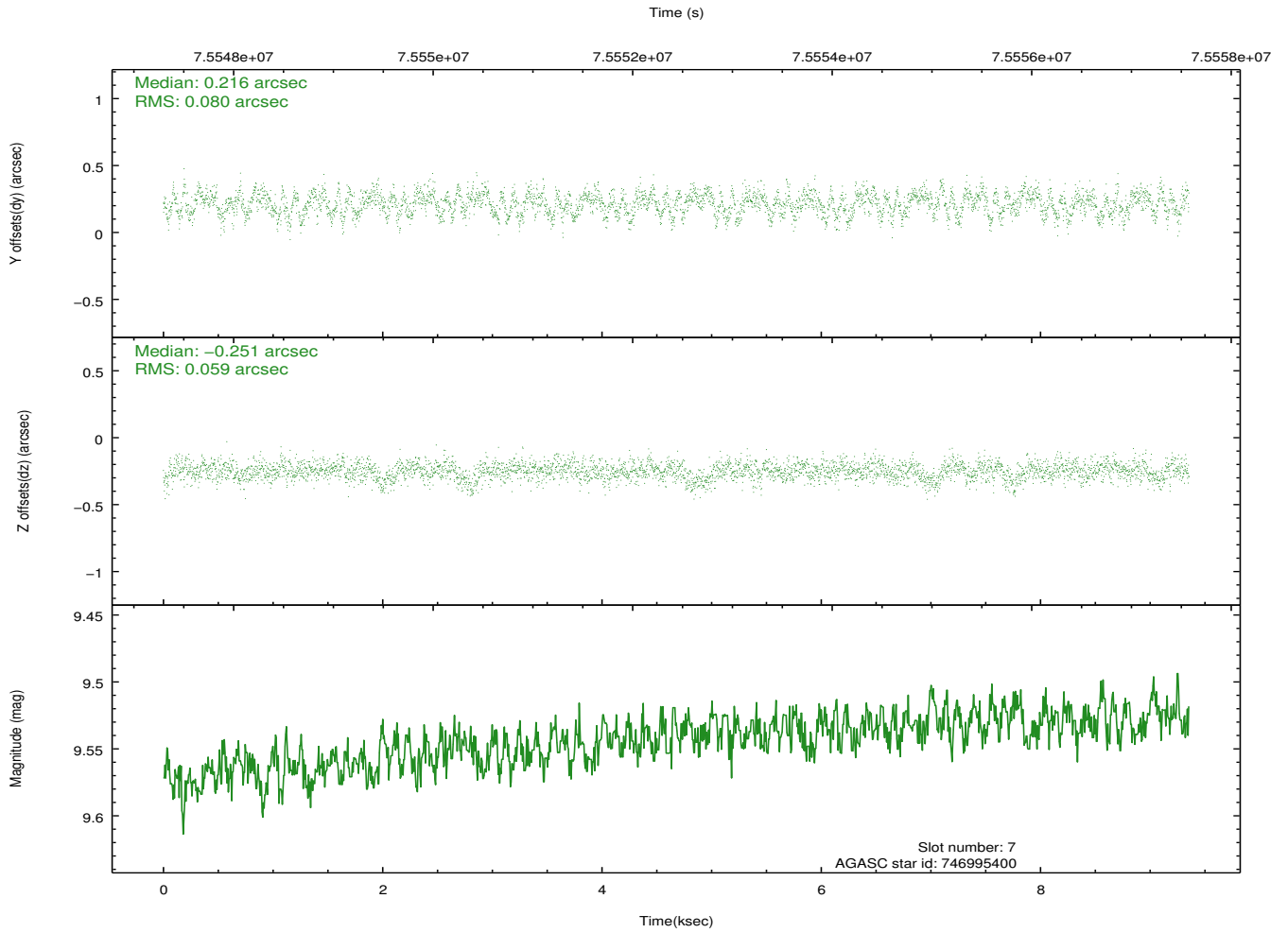
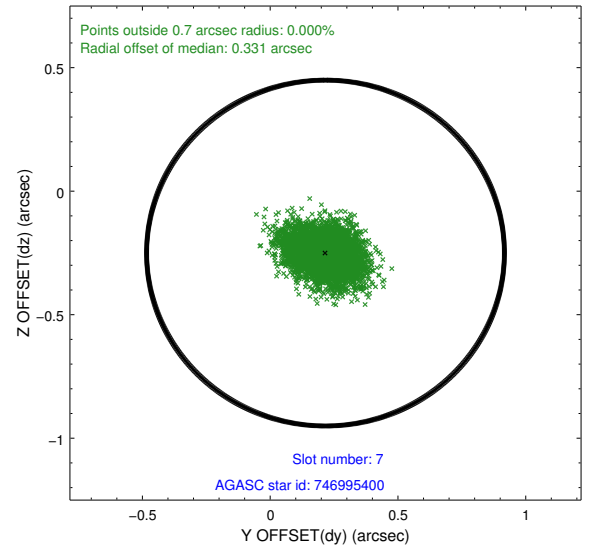
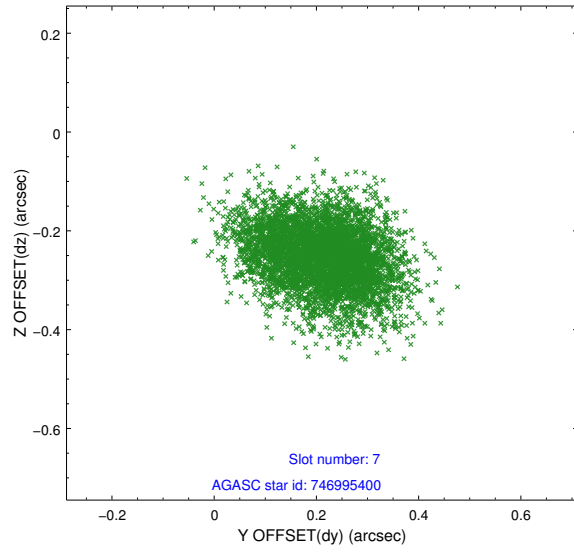


## 2.4.4 Slot 6



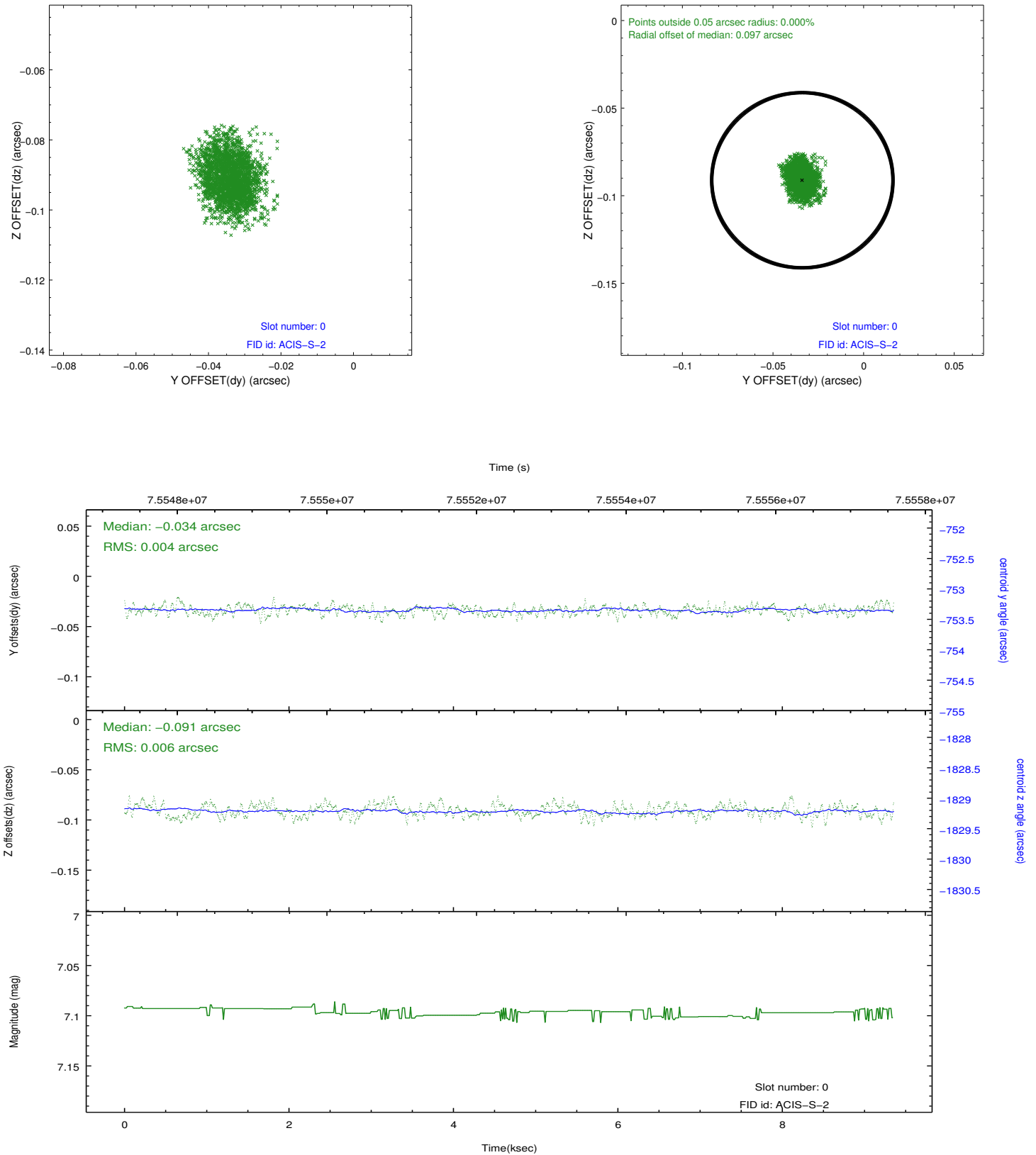


## 2.4.5 Slot 7

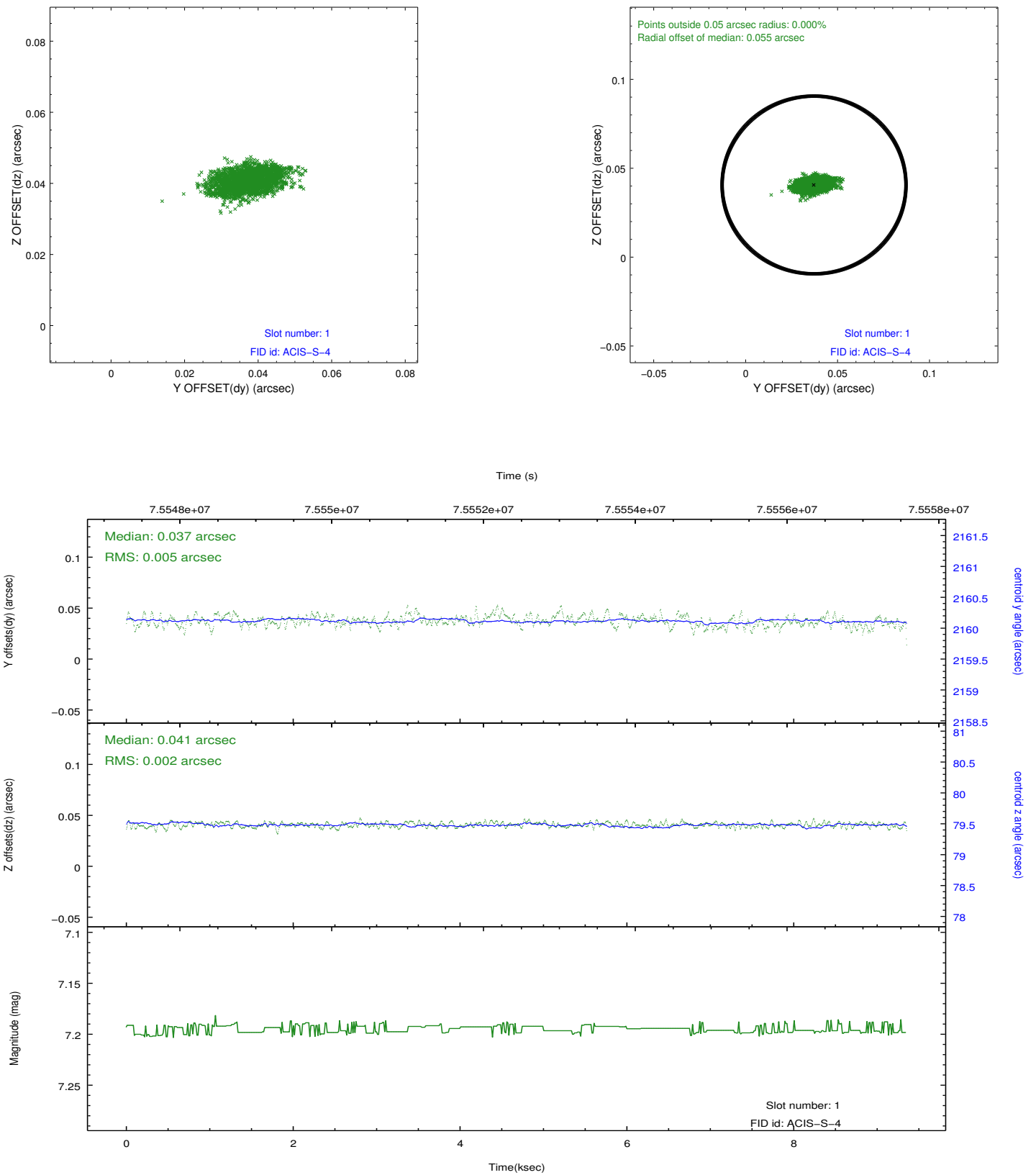


## 2.5 FID Slots

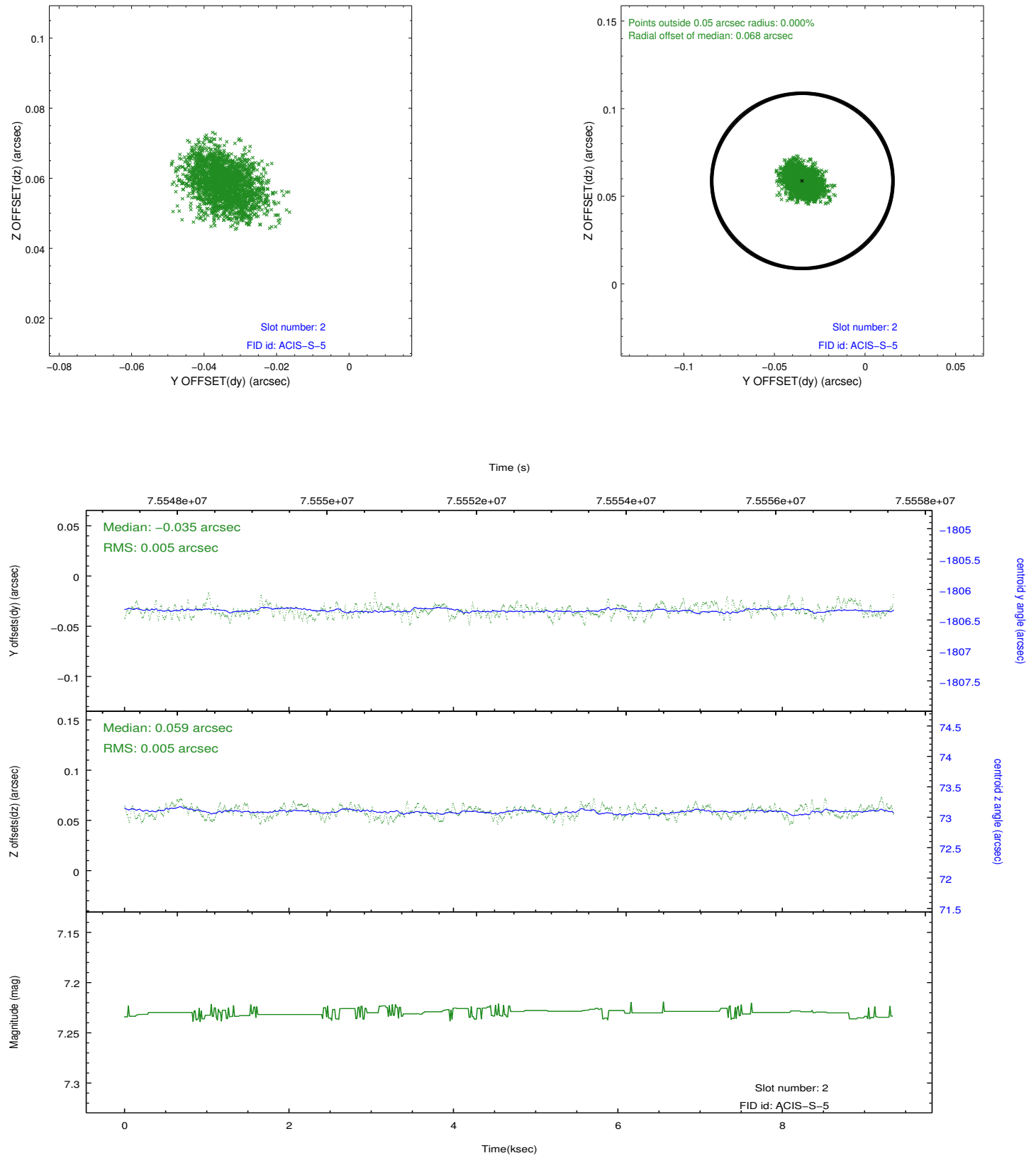
### 2.5.1 Slot 0



## 2.5.2 Slot 1



### 2.5.3 Slot 2



## A Summary

### A.1 Status

V&V Scientist	Jen Lauer
V&V Date (YYYY-MM-DD)	2012.08.30
V&V Edition	1
V&V Disposition and Status	OK
V&V Charge Time	7.843

### A.2 Comments