

V&V Reference Report

L2 ASCDS Version : 7.6.10

Observation 1647 - L2 Version 001
Chandra X-Ray Center

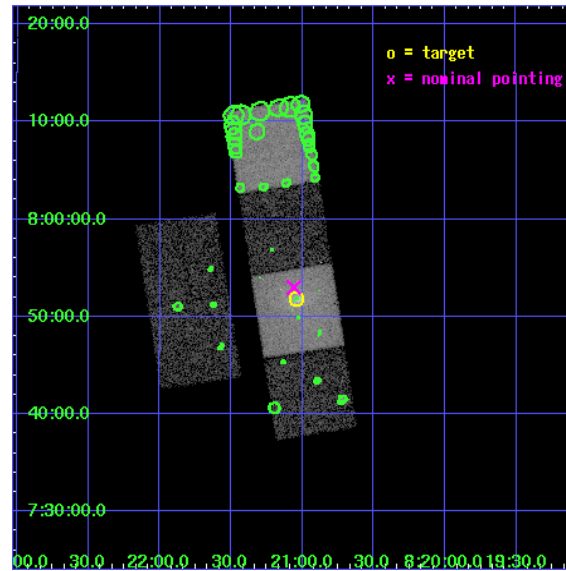
L2 Processing Date : Jun 9 2007

Contents

1	Front	2
2	OBI	3
2.1	OBI	3
2.1.1	Images	3
2.1.2	Bias	3
2.1.3	Parameters	4
2.1.4	Events	4
2.2	Compared Parameters	5
2.3	Aspect	6
2.4	Star Slots	9
2.4.1	Slot 3	9
2.4.2	Slot 4	10
2.4.3	Slot 5	11
2.4.4	Slot 6	12
2.4.5	Slot 7	13
2.5	FID Slots	14
2.5.1	Slot 0	14
2.5.2	Slot 1	15
2.5.3	Slot 2	16
3	Point Sources	17
A	Summary	18
A.1	Status	18
A.2	Comments	18

1 Front

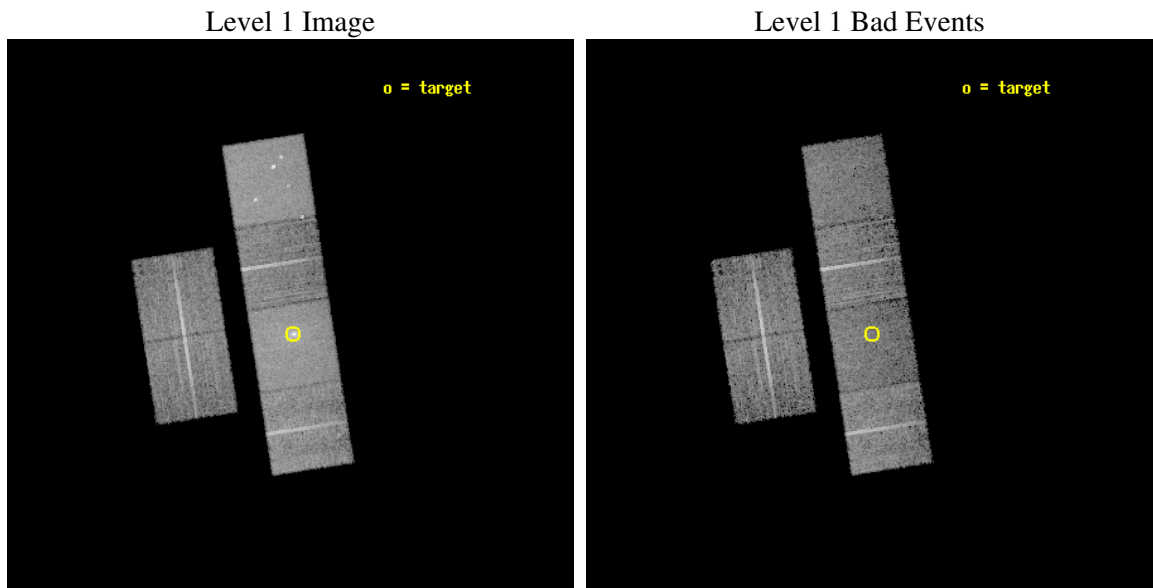
seq_num	800115
obs_id	1647
title	THE COOLING FLOW IN RXJ0821.0+0752
observer	Professor Andrew Fabian
object	RXJ0821
dtcycle	0
cycle	P
ra_targ	125.26
dec_targ	7.863056
ra_nom	125.2650438032
dec_nom	7.8834142879047
roll_nom	81.135127146218
revision	2
ontime	9539.2000088841
livetime	9418.4089145549
ontime2	9539.2000088841
ontime3	9539.2000088841
ontime5	9539.2000088841
ontime6	9539.2000088841
ontime7	9539.2000088841
ontime8	9532.7181681842
l2events	114634



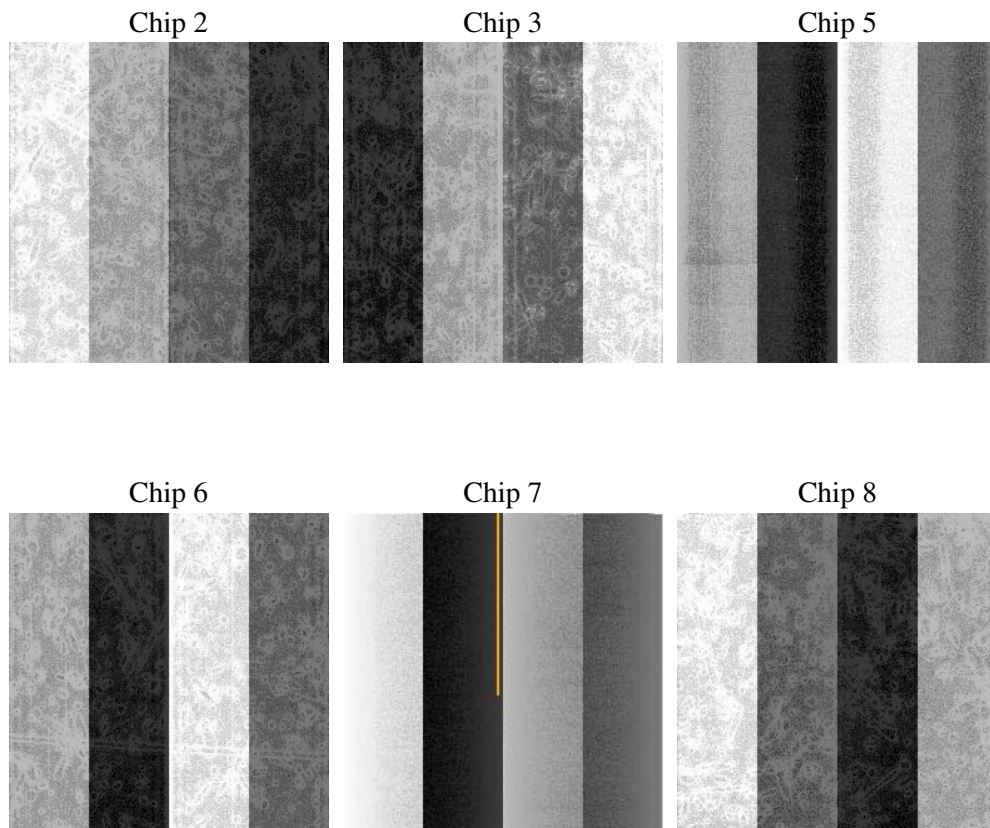
2 OBI

2.1 OBI

2.1.1 Images



2.1.2 Bias



2.1.3 Parameters

obi_num	0
ascdsver	7.6.10
caldsver	3.4.0
date	2007-06-09T19:01:28
revision	2

sched_exp_time	9785.000000
ontime	9539.2000088841
ontime2	9539.2000088841
ontime3	9539.2000088841
ontime5	9539.2000088841
ontime6	9539.2000088841
ontime7	9539.2000088841
ontime8	9532.7181681842
l1events	426184

2.1.4 Events

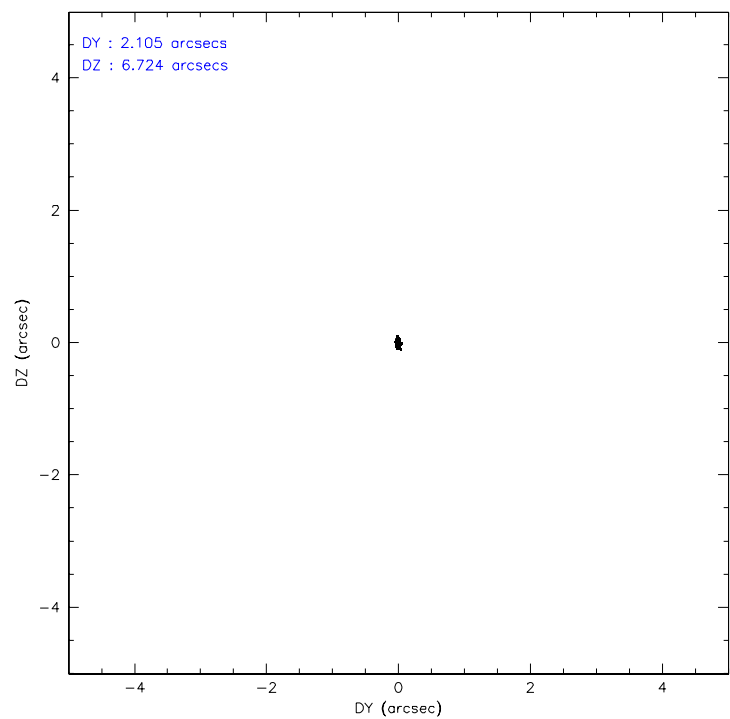
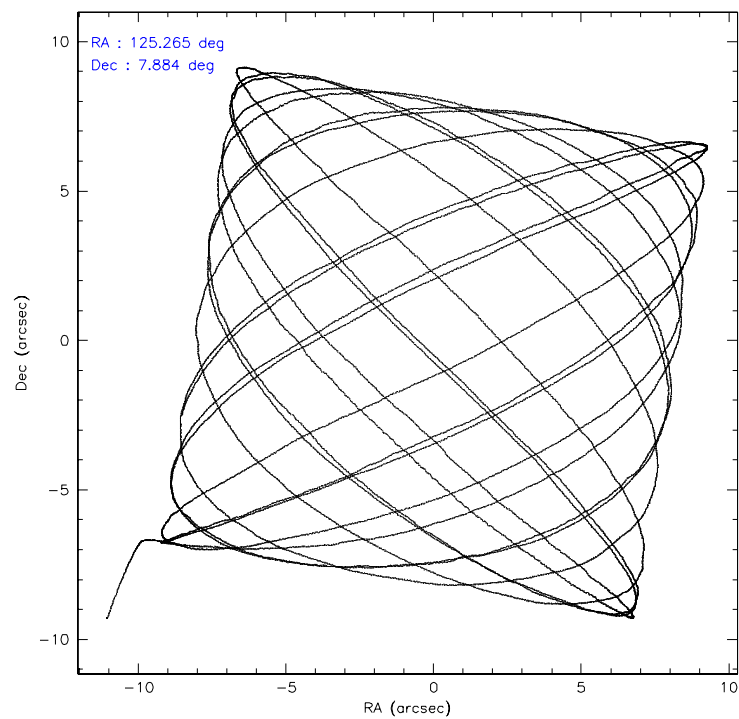
	ccd 2	ccd 3	ccd 5	ccd 6	ccd 7	ccd 8
level 1 events	57912	56143	90057	58238	89725	74109
rejected events	51531	49739	42533	51558	41352	60150
rejected %	88%	88%	47%	88%	46%	81%

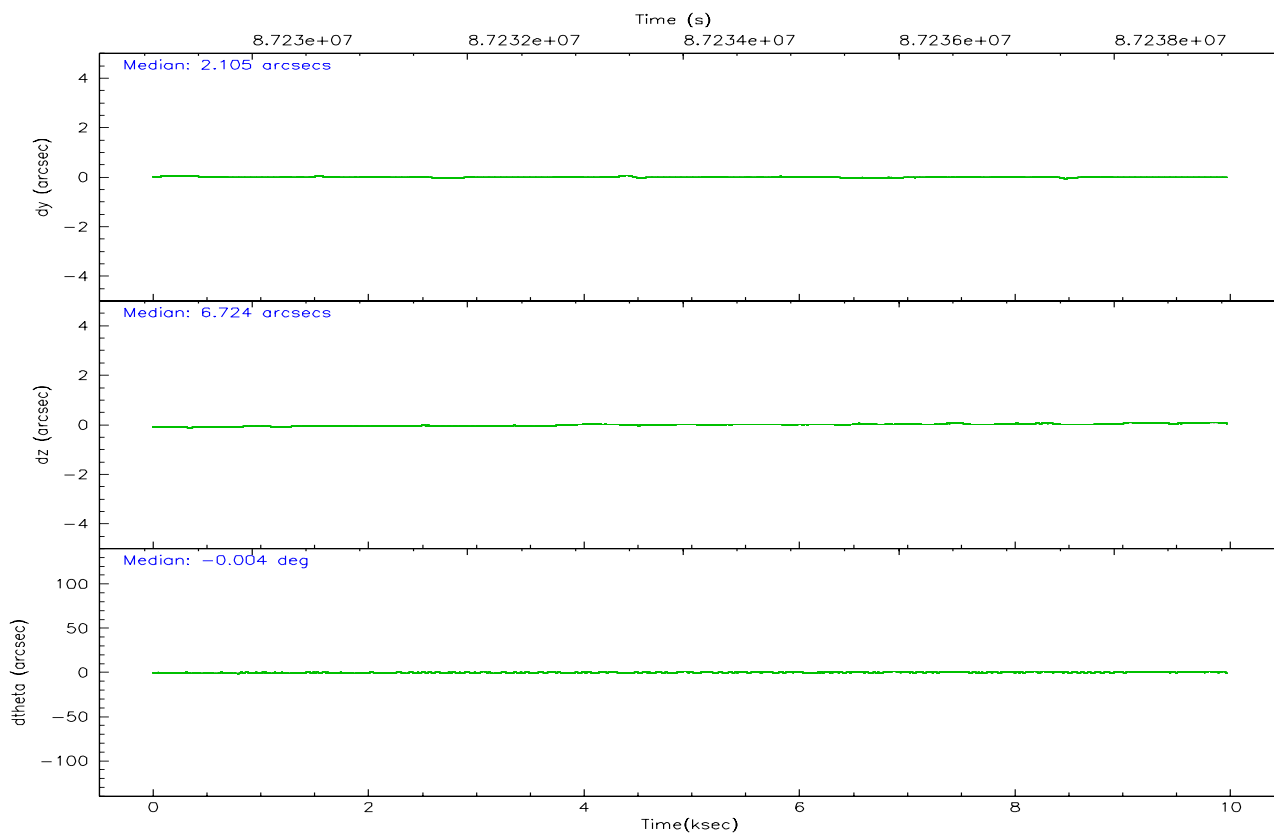
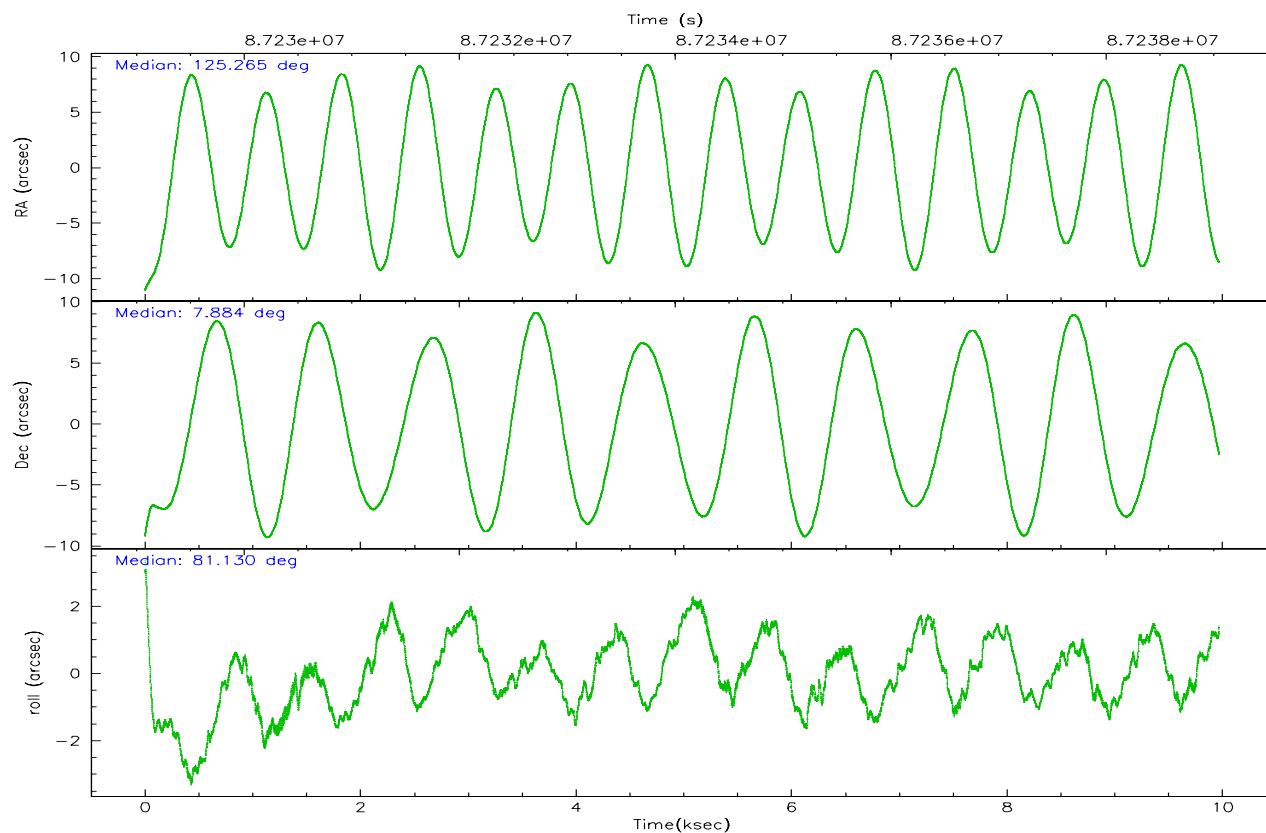
	ccd 2	ccd 3	ccd 5	ccd 6	ccd 7	ccd 8
grade 0 events	2780	2884	7840	2968	7509	4683
	4%	5%	8%	5%	8%	6%
grade 1 events	25	28	179	24	73	51
	0%	0%	0%	0%	0%	0%
grade 2 events	1325	1203	13033	1280	9975	2894
	2%	2%	14%	2%	11%	3%
grade 3 events	629	593	2336	620	4475	1551
	1%	1%	2%	1%	4%	2%
grade 4 events	579	633	2283	618	4557	1495
	0%	1%	2%	1%	5%	2%
grade 5 events	1853	2123	6059	2239	6843	3054
	3%	3%	6%	3%	7%	4%
grade 6 events	1069	1097	22059	1197	21891	3337
	1%	1%	24%	2%	24%	4%
grade 7 events	49652	47582	36268	49292	34402	57044
	85%	84%	40%	84%	38%	76%

2.2 Compared Parameters

Parameter	Planned	Actual	Parameter	Planned	Actual
Instrument	ACIS	ACIS	Obspar format version number	6	6
Detector	ACIS-235678	ACIS-235678	Obspar file type	PREDICTED	ACTUAL
Grating	NONE	NONE	Obspar update status	NONE	UPDATED
Data mode	FAINT	FAINT	Number of optional ACIS chips dropped	0	0
Observation mode	POINTING	POINTING	On-chip summing requested	N	N
Pointing RA	125.275199	125.2650438032028	Subarray requested	NONE	NONE
Pointing Dec	7.857971	7.883414287904746	Alternating exposures requested	N	N
Pointing Roll	80.977113	81.13512714621751	Primary exposure time	0.000000	3.2
SIM focus pos (mm)	-0.684267	-0.6828225247311905			
SIM defocus (mm)	0	0.001444936568705701			
SIM translation stage pos (mm)	-190.132523	-190.1400660498719			
SIM translation stage offset (mm)	0	0.00754346686406393			
Observation start time	87229264.184000	87228550.029799			
Observation start date	2000-10-06T14:20:00	2000-10-06T14:09:10			
Observation end time	87239049.184000	87239906.517728			
Observation end date	2000-10-06T17:03:05	2000-10-06T17:18:26			
Read mode	TIMED	TIMED			

2.3 Aspect



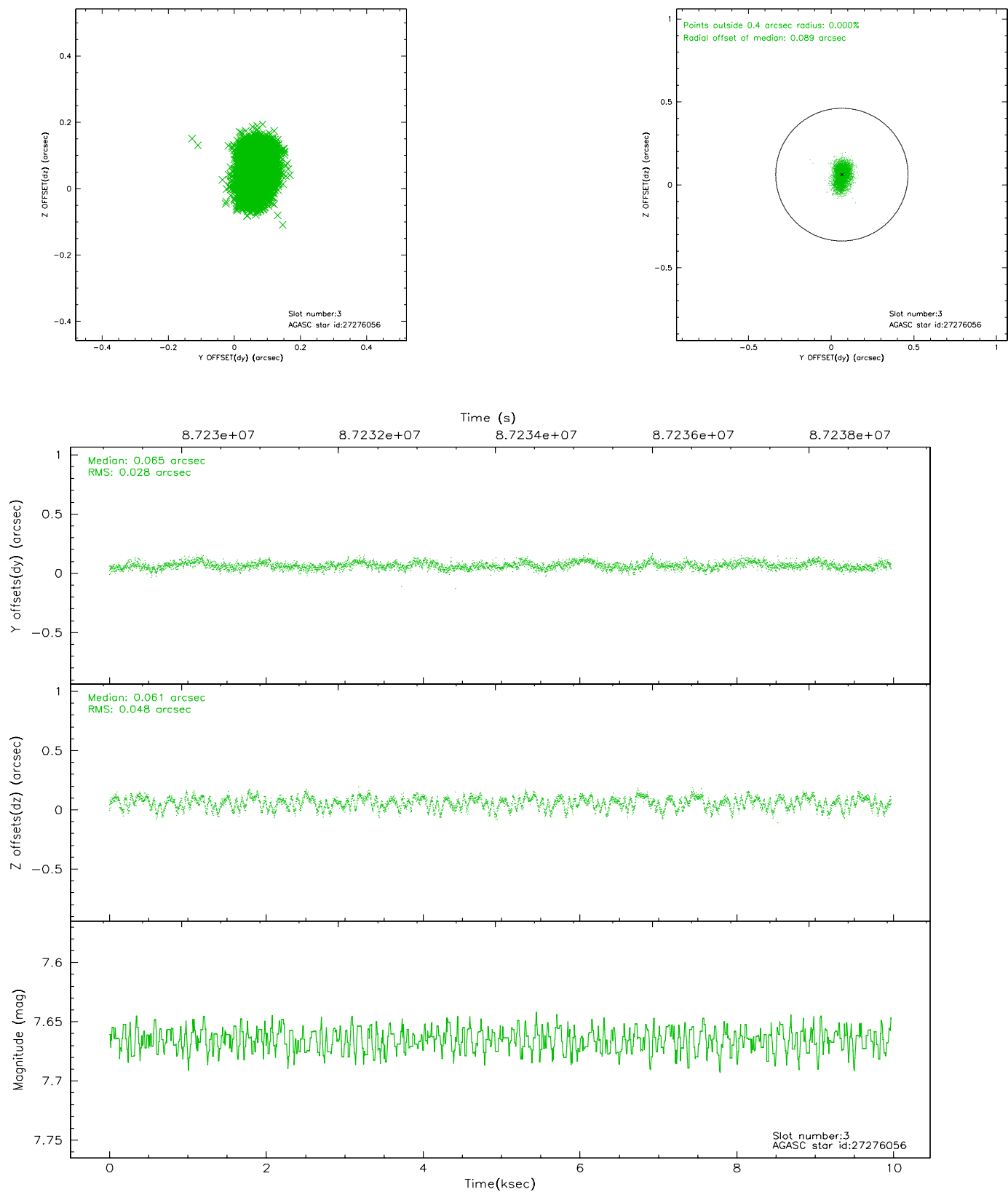


Slot Statistics

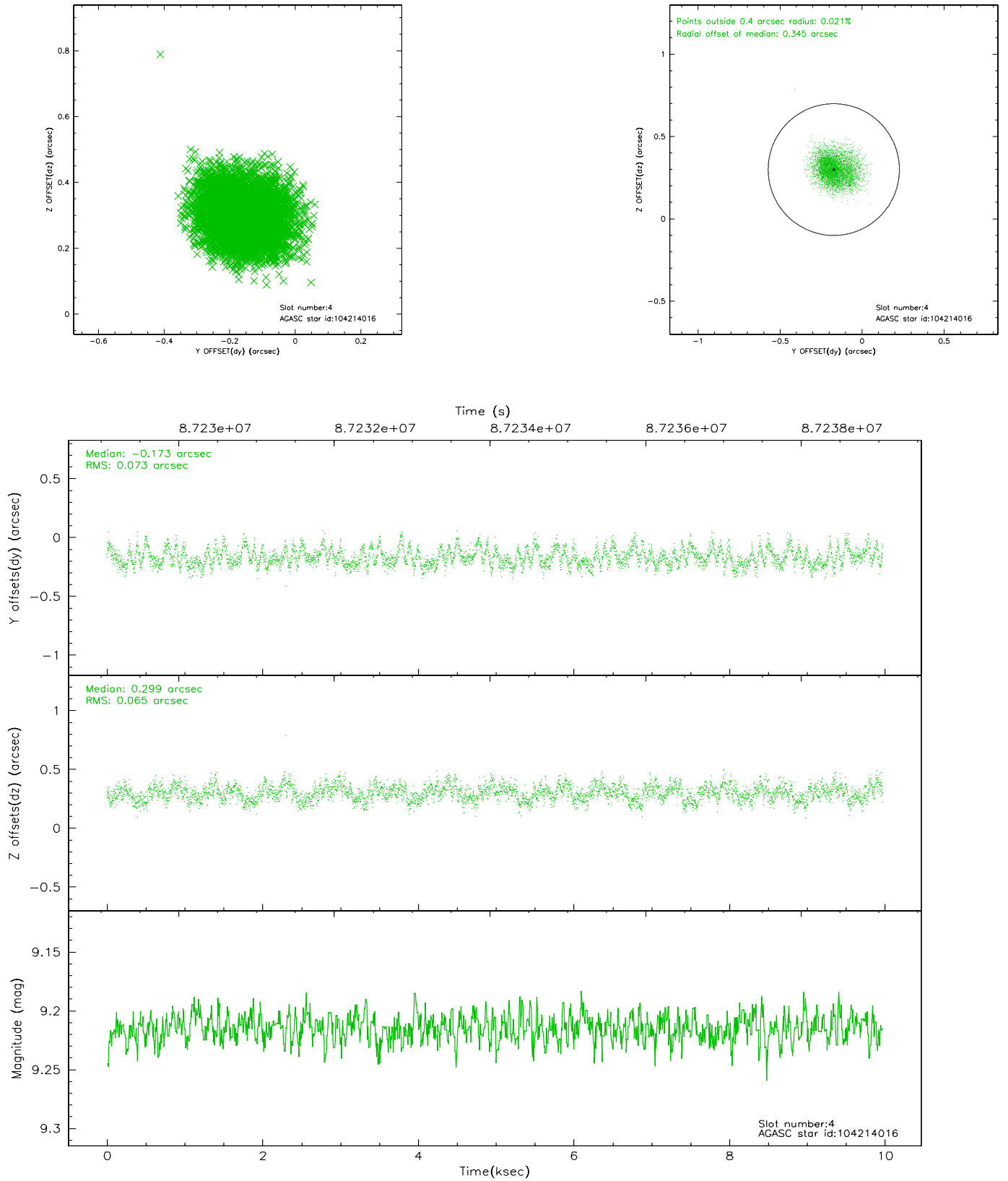
slot	status	id	mag	n_pts	med_dy	med_dz	dr1	dr2	ra	dec	mean_y	mean_z
0	FID	ACIS-S-2	7.11	2431	-0.019	0.021	0.006	0.011	0.000000	0.000000	-754.74	-1727.85
1	FID	ACIS-S-4	7.20	2431	-0.065	0.003	0.005	0.009	0.000000	0.000000	2158.25	180.06
2	FID	ACIS-S-5	7.23	2432	0.052	-0.015	0.006	0.010	0.000000	0.000000	-1806.83	174.32
3	GUIDE	27276056	7.67	4864	0.065	0.061	0.060	0.097	125.347486	7.386536	-1635.92	-520.59
4	GUIDE	104214016	9.21	4865	-0.173	0.299	0.105	0.165	125.978575	8.019253	968.16	-2384.16
5	GUIDE	104217296	8.88	4865	0.111	-0.022	0.074	0.116	125.514563	7.643066	-629.88	-964.82
6	GUIDE	27265384	9.58	4864	0.251	-0.261	0.122	0.188	124.635258	7.417855	-1921.87	2008.03
7	GUIDE	104202616	9.56	4864	-0.264	-0.076	0.102	0.163	125.143469	8.504755	2225.05	829.52

2.4 Star Slots

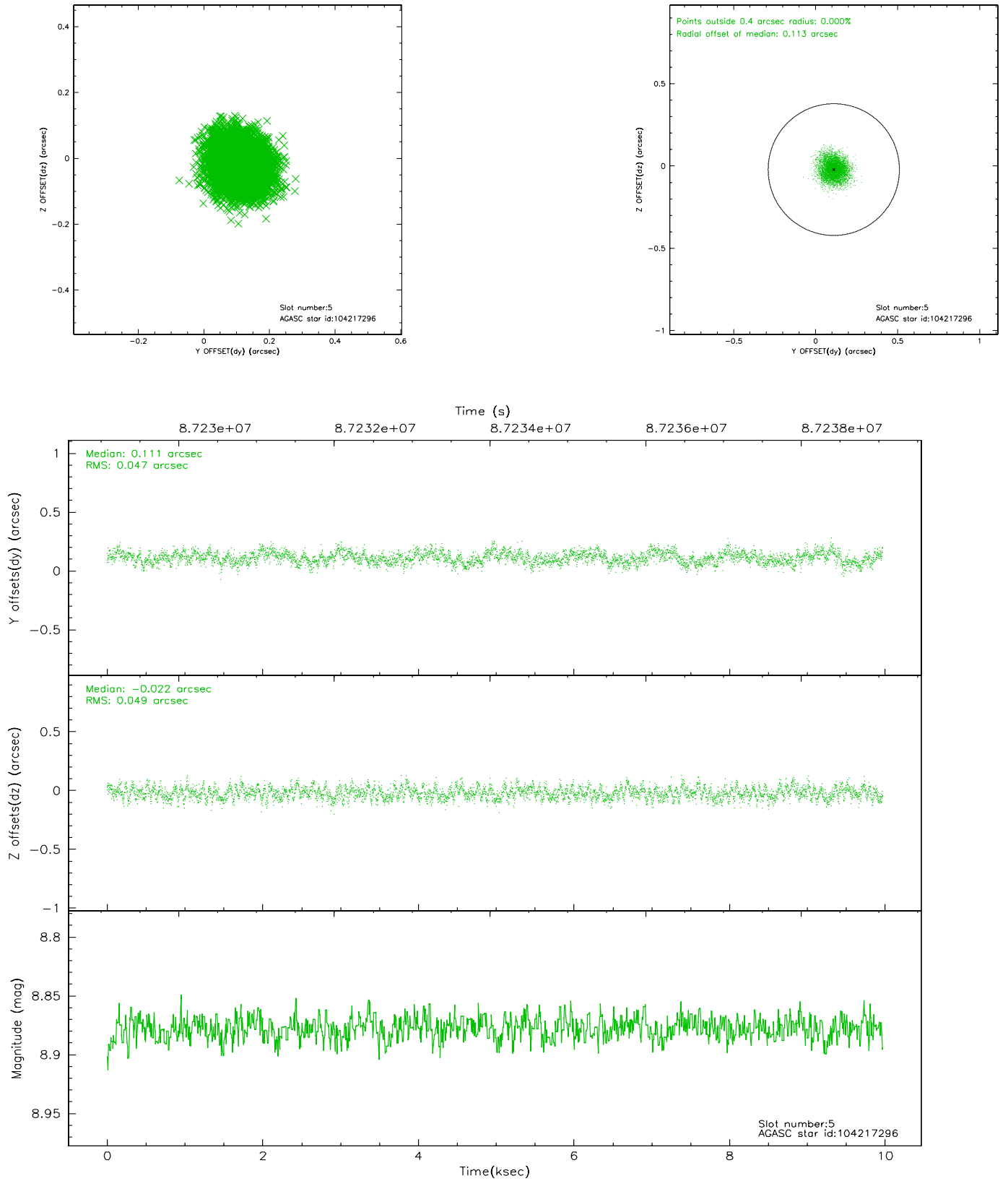
2.4.1 Slot 3



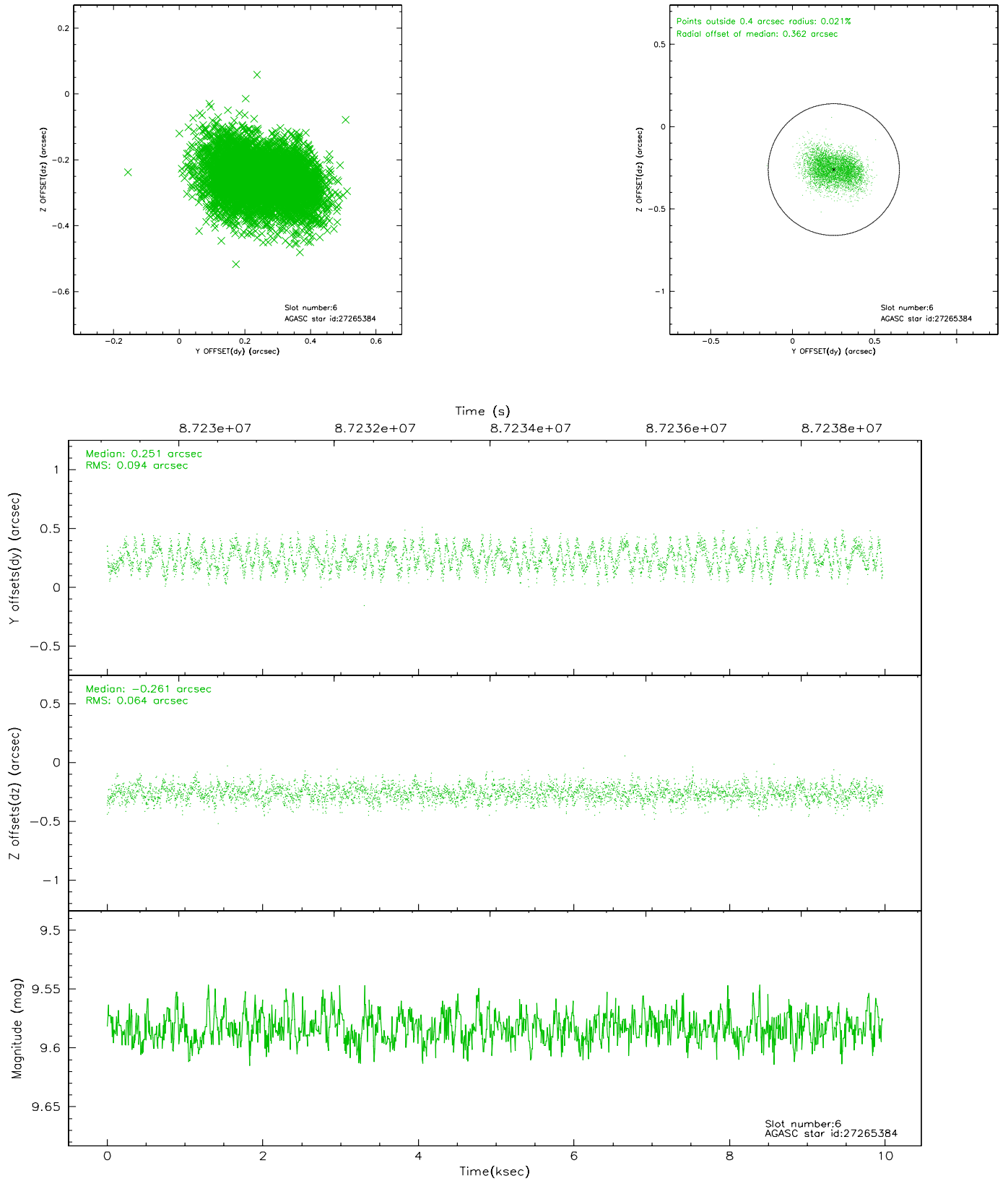
2.4.2 Slot 4



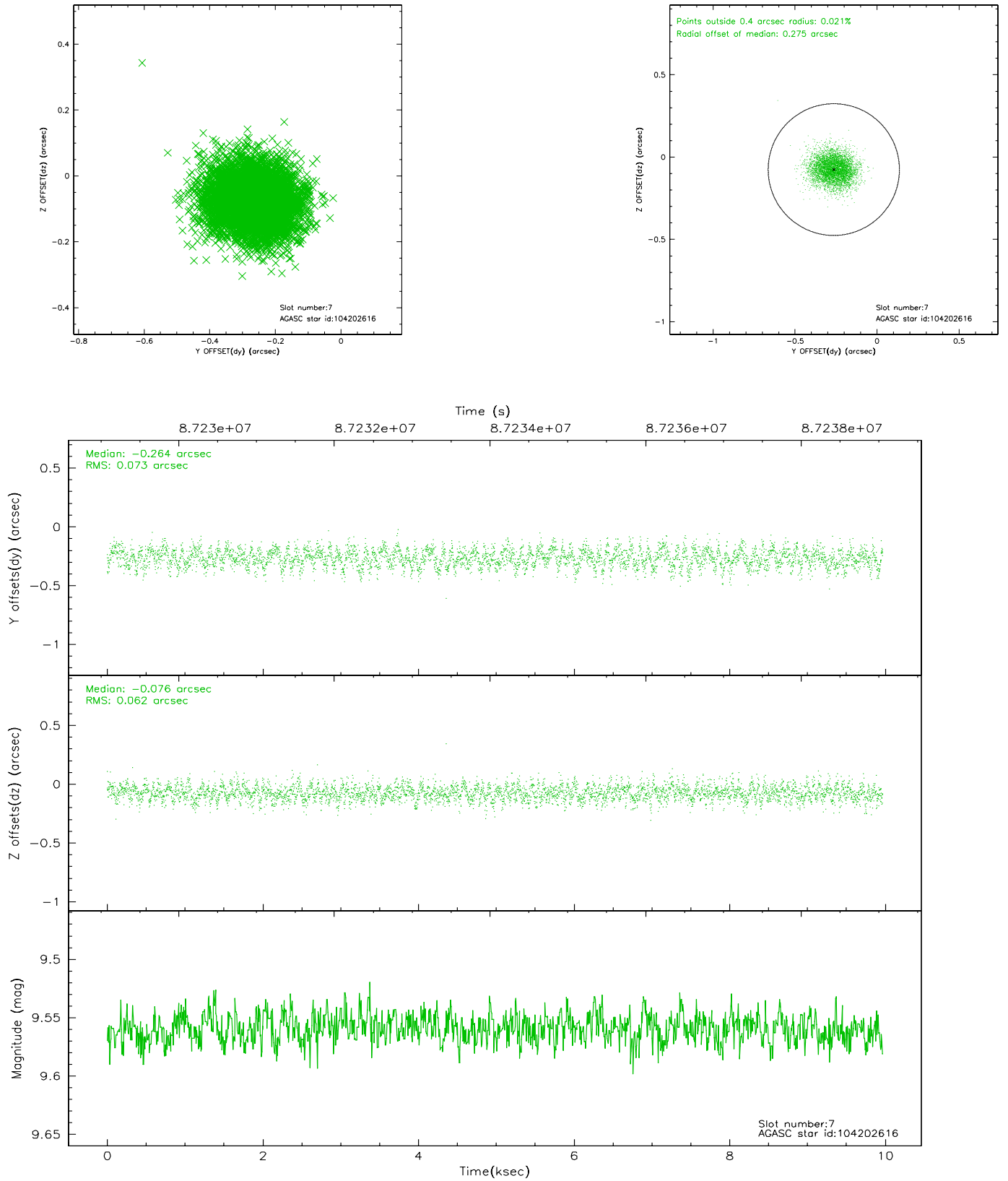
2.4.3 Slot 5



2.4.4 Slot 6

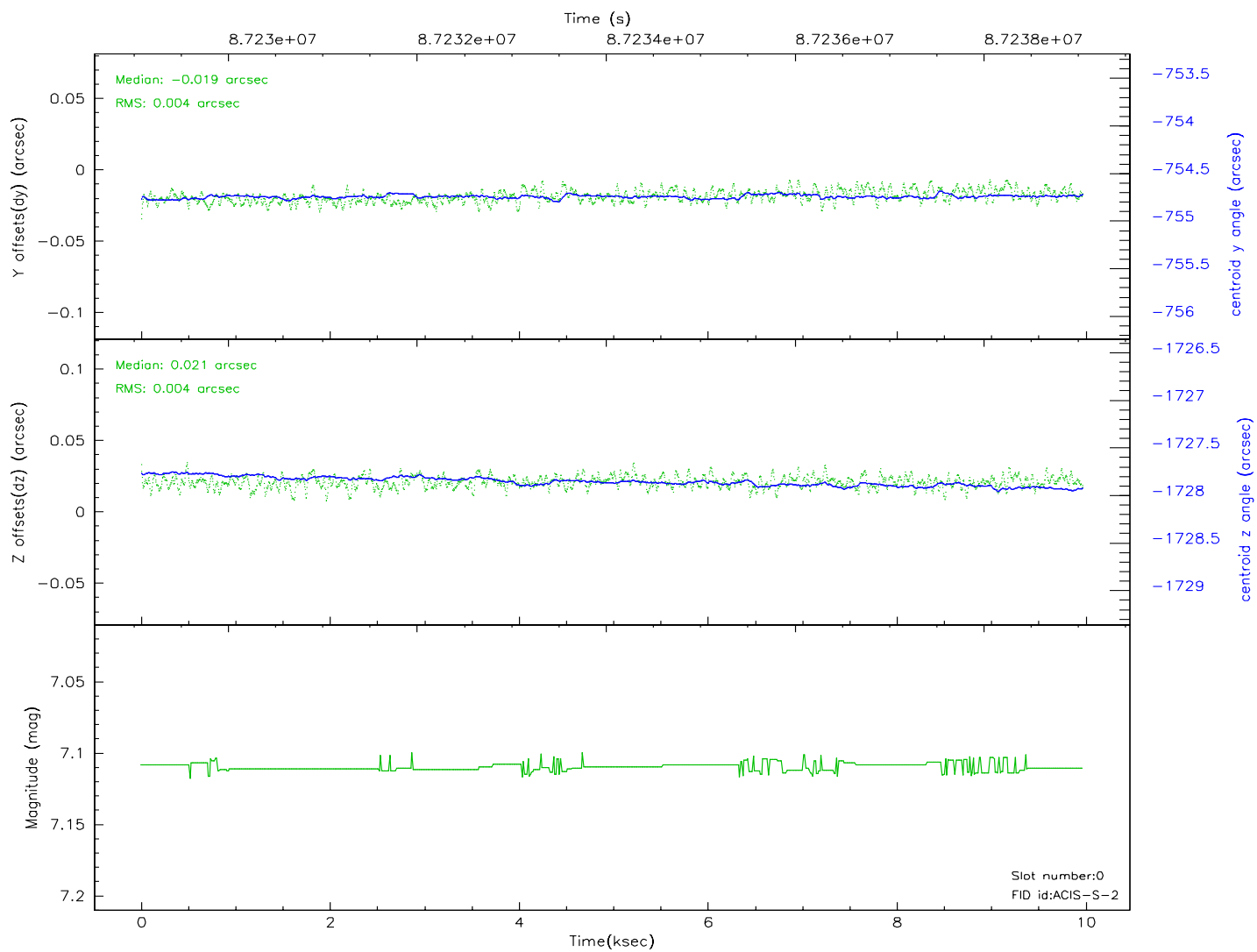
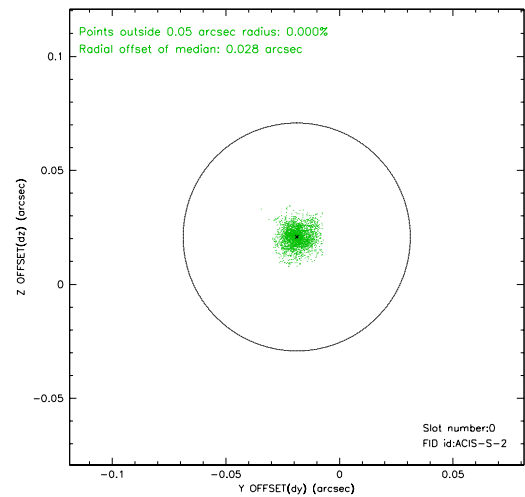
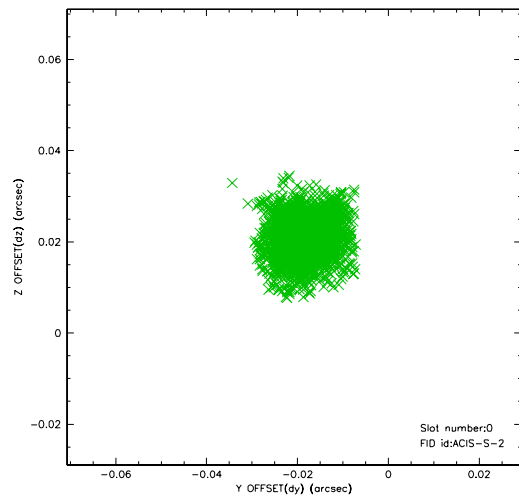


2.4.5 Slot 7

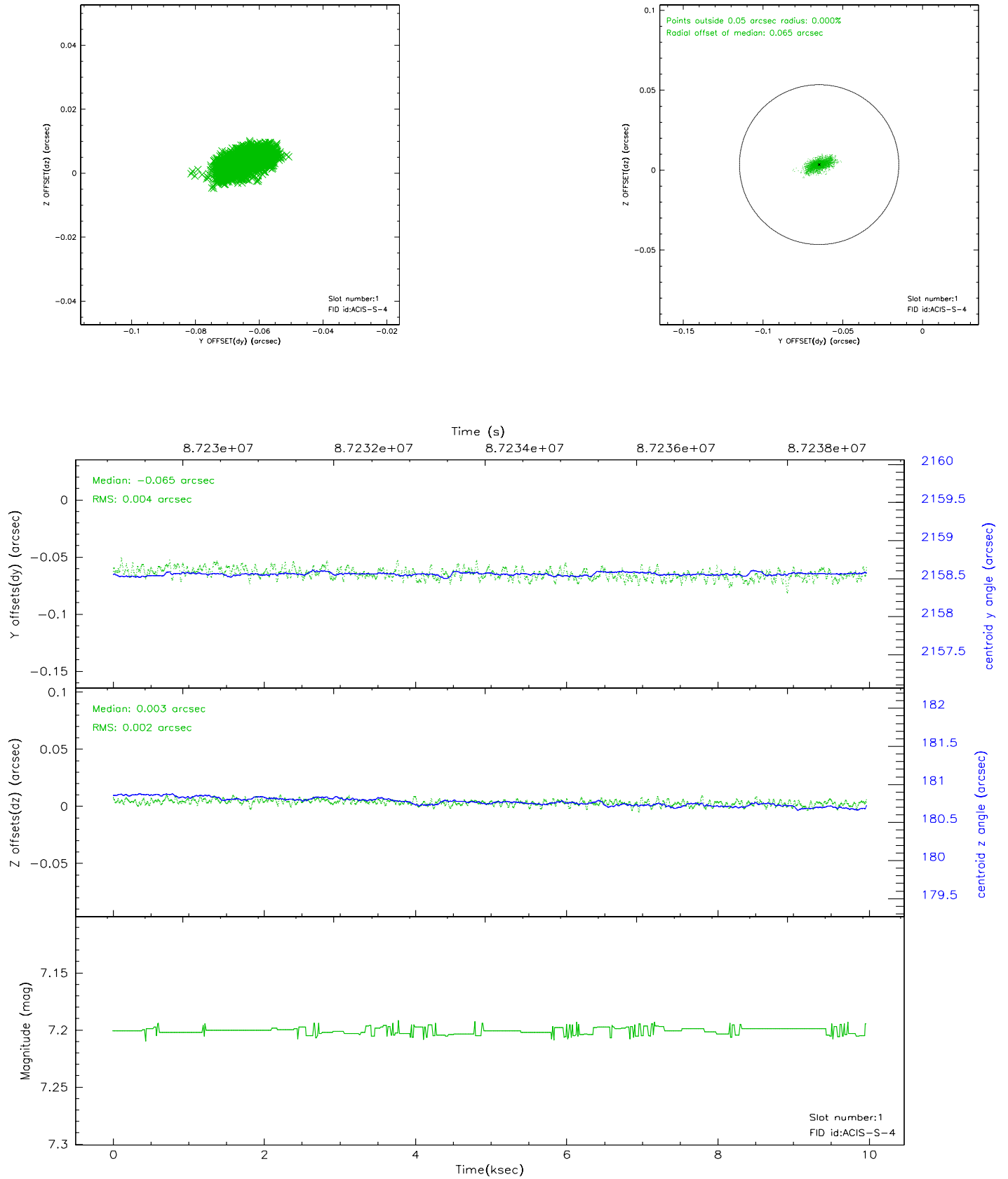


2.5 FID Slots

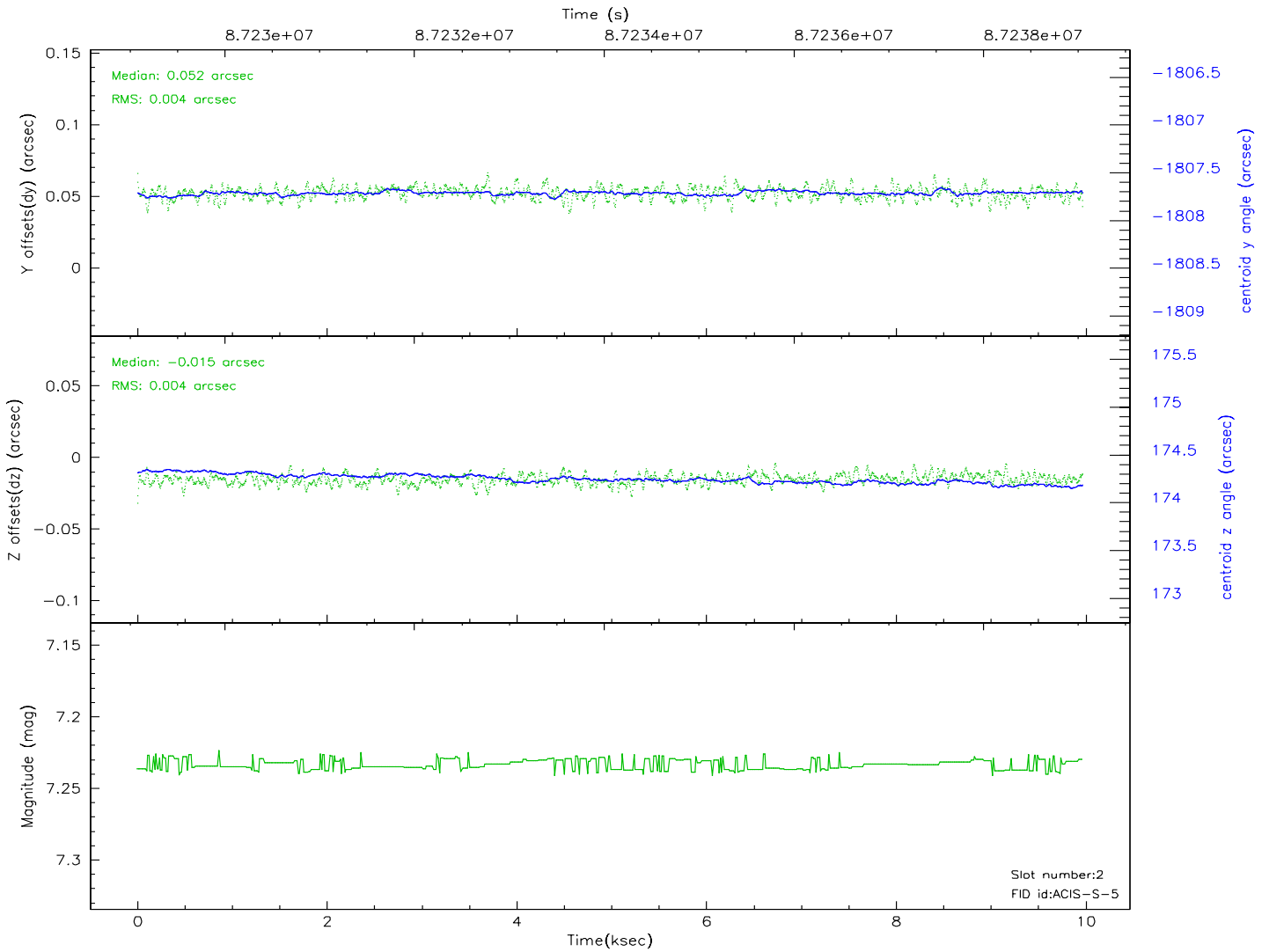
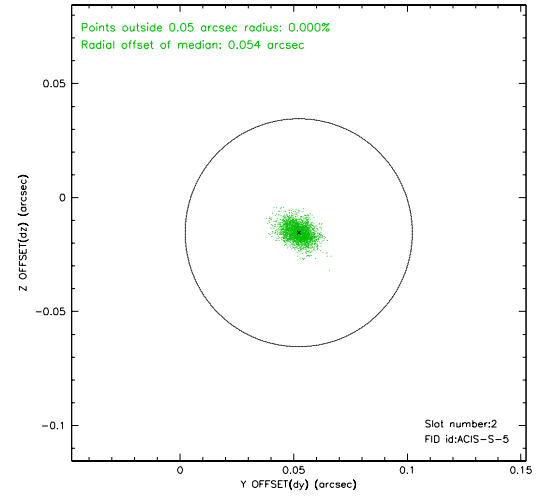
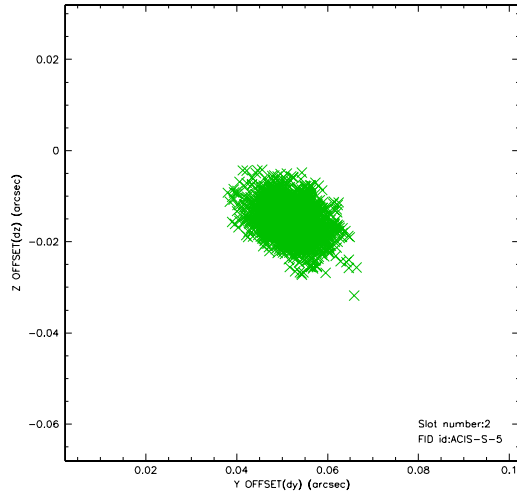
2.5.1 Slot 0



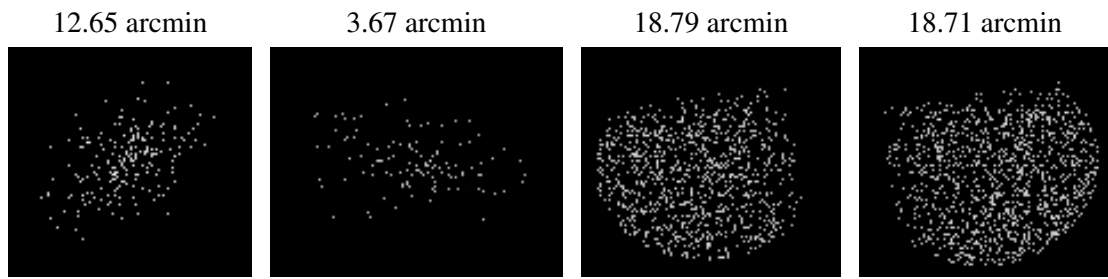
2.5.2 Slot 1



2.5.3 Slot 2



3 Point Sources



A Summary

A.1 Status

V&V Scientist	Beth Sundheim
V&V Date (YYYY-MM-DD)	2007.06.11
V&V Edition	1
V&V Disposition and Status	OK
V&V Charge Time	9.542

A.2 Comments