

V&V Reference Report

L2 ASCDS Version : 8.4.4

Observation 14387 - L2 Version 1
Chandra X-Ray Center

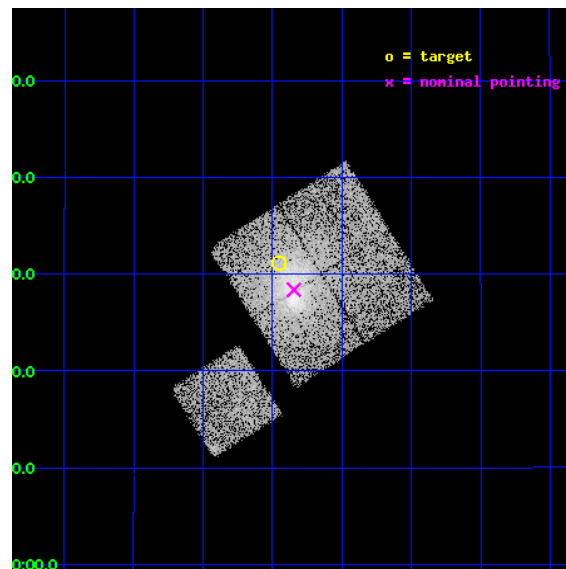
L2 Processing Date : Apr 28 2012

Contents

1	Front	2
2	OBI	3
2.1	OBI	3
2.1.1	Images	3
2.1.2	Bias	3
2.1.3	Parameters	4
2.1.4	Events	4
2.2	Compared Parameters	5
2.3	Aspect	6
2.4	Star Slots	9
2.4.1	Slot 3	9
2.4.2	Slot 4	10
2.4.3	Slot 5	11
2.4.4	Slot 6	12
2.4.5	Slot 7	13
2.5	FID Slots	14
2.5.1	Slot 0	14
2.5.2	Slot 1	15
2.5.3	Slot 2	16
A	Summary	17
A.1	Status	17
A.2	Comments	17

1 Front

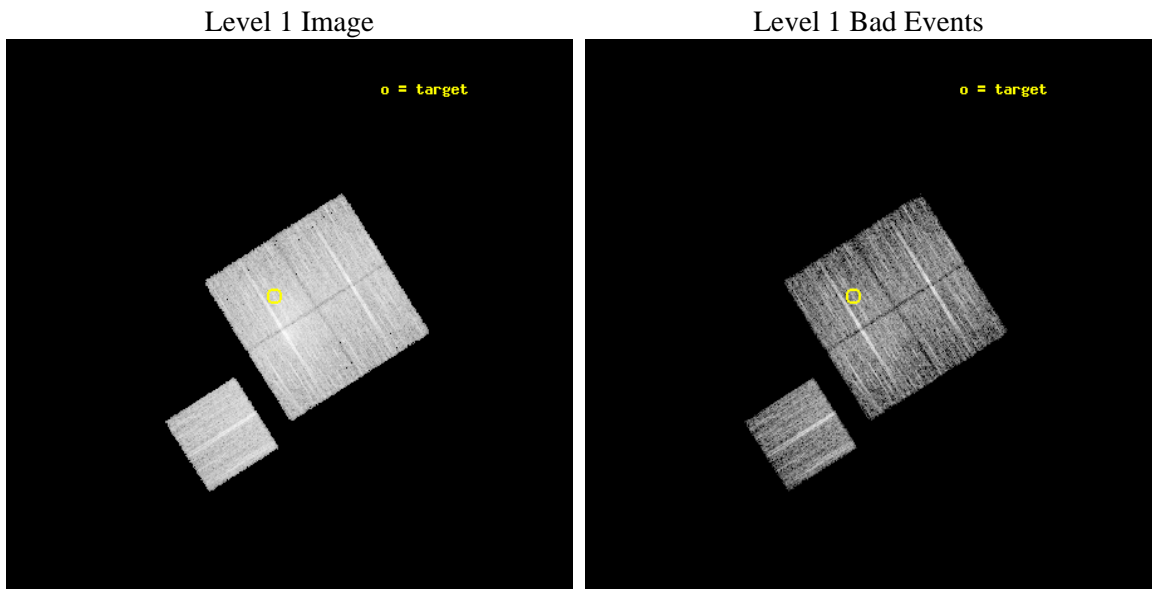
seq_num	801212	Sequence number
obs_id	14387	Observation id
title	Characterizing the Most Massive Clusters in the Local Universe - B	
observer	Dr. Stephen Murray	Principal investigator
object	G243.57+67.76	Source name
dtcycle	0	
cycle	P	events from which exps? Prim/Second/Both
ra_targ	173.239583	Observer's specified target RA [deg]
dec_targ	14.520333	Observer's specified target Dec [deg]
ra_nom	173.21152308159	Nominal RA [deg]
dec_nom	14.473166392548	Nominal Dec [deg]
roll_nom	237.70114728145	Nominal Roll [deg]
revision	1	Processing version of data
ontime	9078.9681767821	Sum of GTIs [s]
livetime	8960.3447737133	Livetime [s]
ontime0	9078.8450567722	Sum of GTIs [s]
ontime1	9078.8860967755	Sum of GTIs [s]
ontime2	9072.6450862288	Sum of GTIs [s]
ontime3	9078.9681767821	Sum of GTIs [s]
ontime6	9078.8040167689	Sum of GTIs [s]
l2events	40473	Number of level 2 events



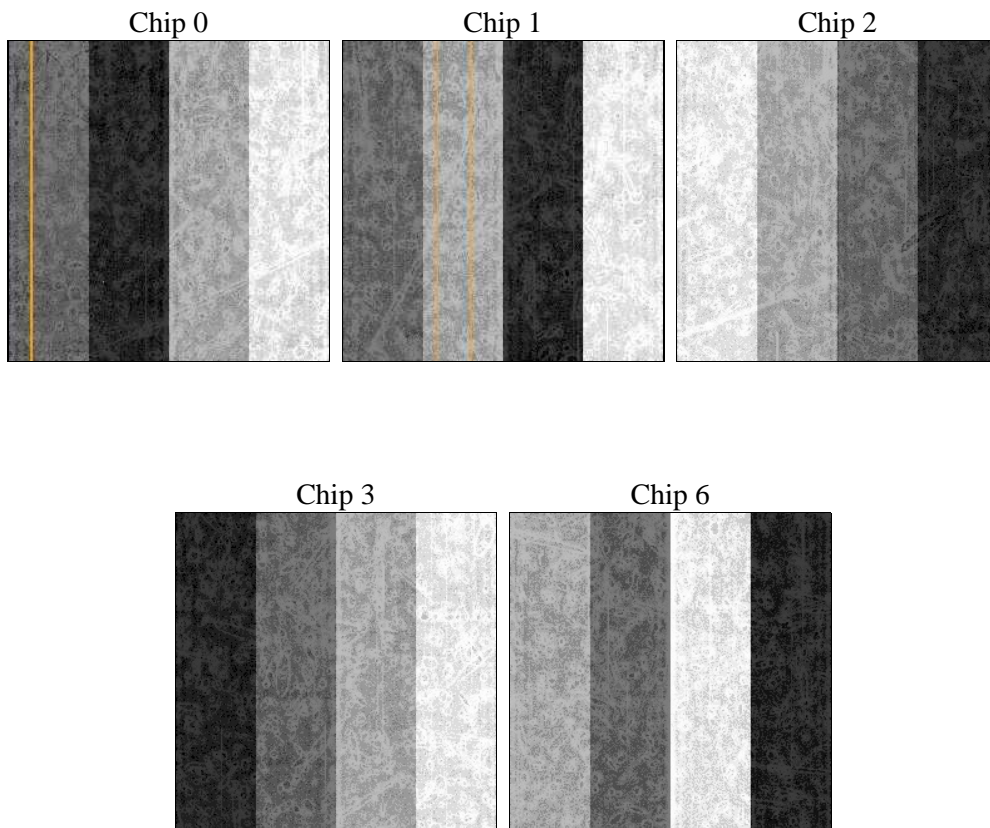
2 OBI

2.1 OBI

2.1.1 Images



2.1.2 Bias



2.1.3 Parameters

obi_num	0	Obi number	sched_exp_time	9000.000000	[s] Scheduled observation exposure time
ascdsver	8.4.4	Processing system revision	ontime	9078.9681767821	Sum of GTIs [s]
caldsver	4.4.9	 	ontime0	9078.8450567722	Sum of GTIs [s]
date	2012-04-28T15:55:49	Date and time of file creation	ontime1	9078.8860967755	Sum of GTIs [s]
revision	1	Processing version of data	ontime2	9072.6450862288	Sum of GTIs [s]
			ontime3	9078.9681767821	Sum of GTIs [s]
			ontime6	9078.8040167689	Sum of GTIs [s]
			l1events	274303	Number of level 1 events

2.1.4 Events

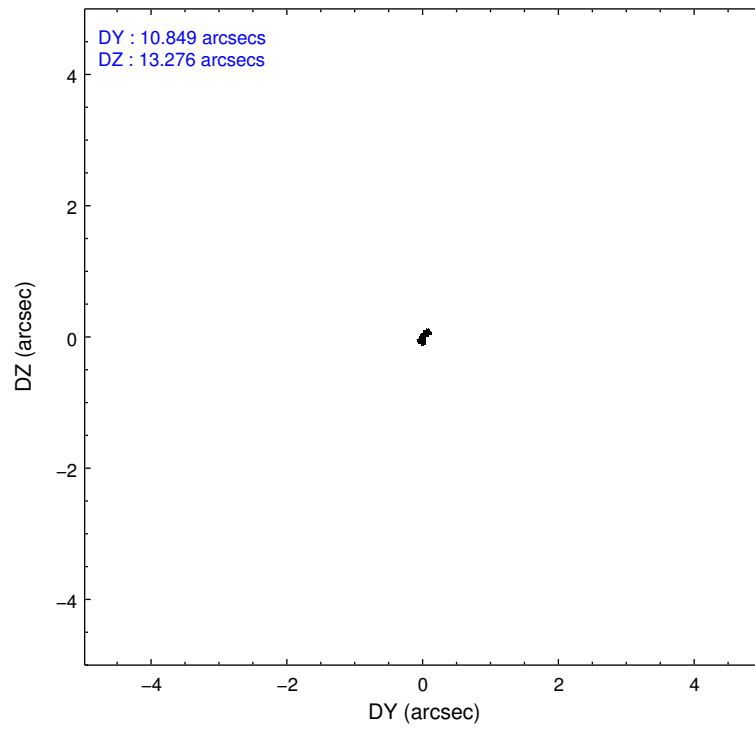
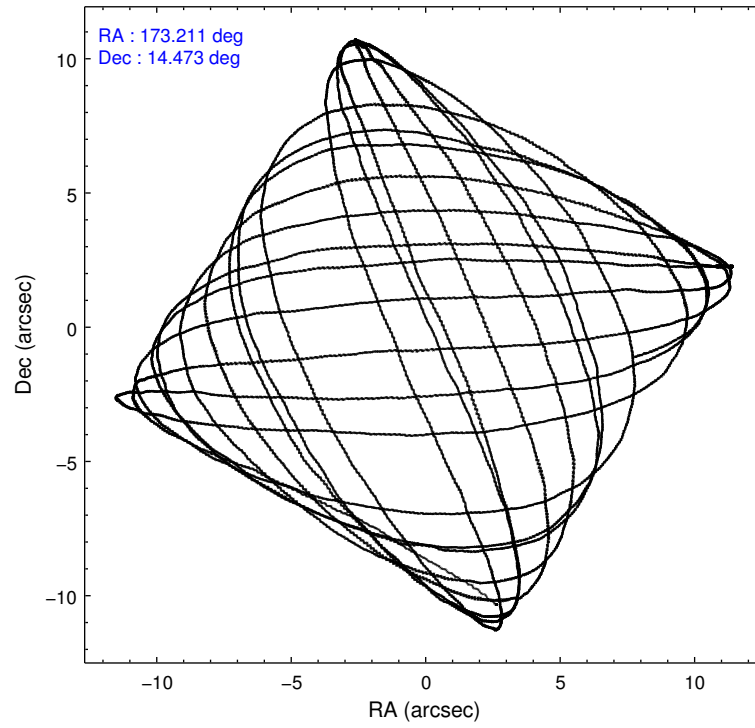
	ccd 0	ccd 1	ccd 2	ccd 3	ccd 6
level 1 events	49346	51661	61083	58101	54112
rejected events	42625	44042	49029	44951	47862
rejected %	86%	85%	80%	77%	88%

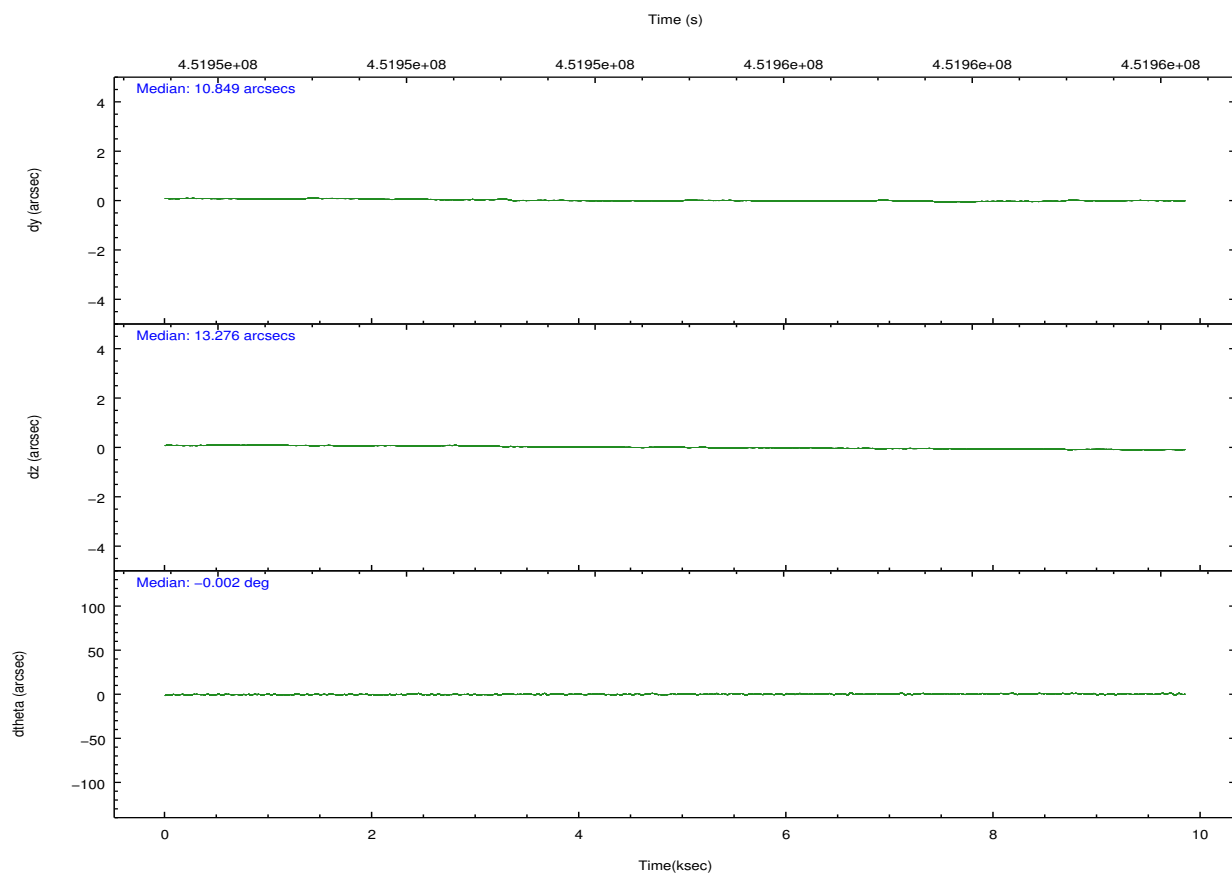
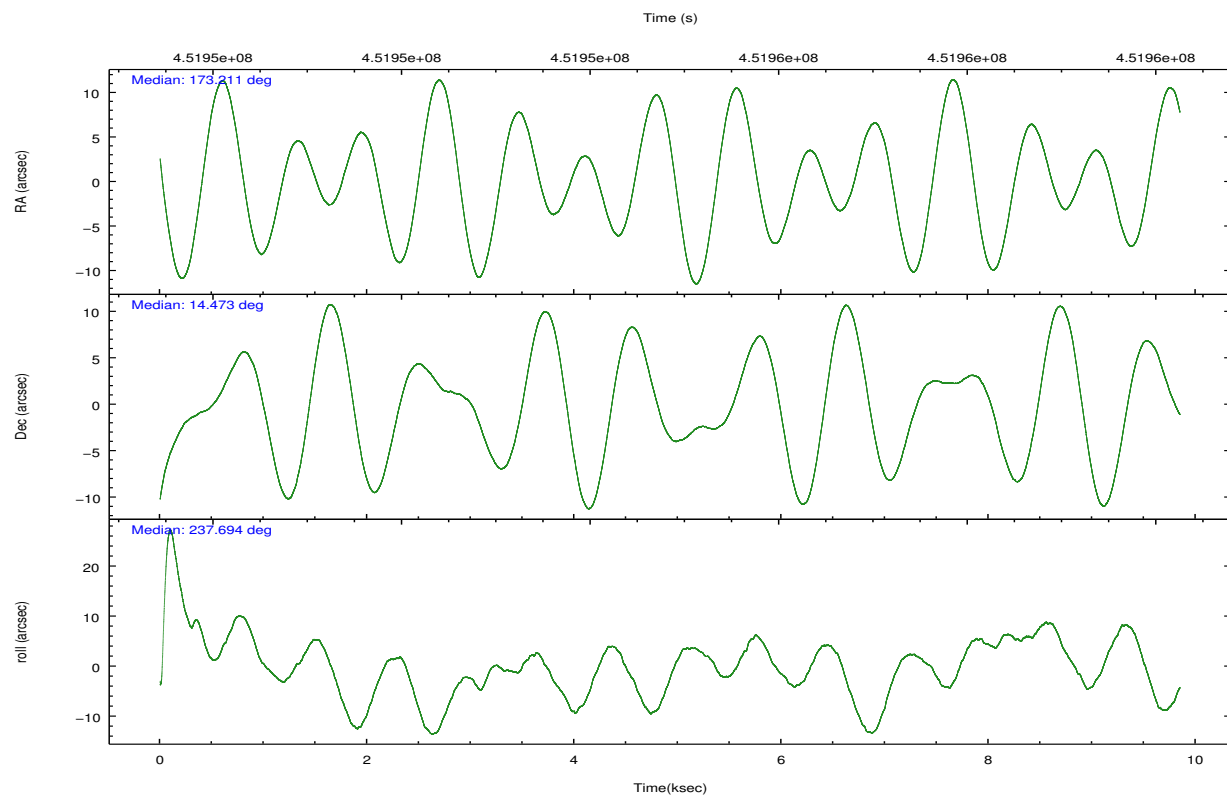
	ccd 0	ccd 1	ccd 2	ccd 3	ccd 6
grade 0 events	2662	3017	7186	8216	2174
	5%	5%	11%	14%	4%
grade 1 events	28	34	62	66	29
	0%	0%	0%	0%	0%
grade 2 events	1550	1763	1954	1970	1310
	3%	3%	3%	3%	2%
grade 3 events	650	671	798	762	653
	1%	1%	1%	1%	1%
grade 4 events	646	679	820	842	683
	1%	1%	1%	1%	1%
grade 5 events	2357	2547	2241	2574	2508
	4%	4%	3%	4%	4%
grade 6 events	1214	1495	1306	1364	1431
	2%	2%	2%	2%	2%
grade 7 events	40239	41455	46716	42307	45324
	81%	80%	76%	72%	83%

2.2 Compared Parameters

Parameter	Planned	Actual	Parameter	Planned	Actual
Instrument	ACIS	ACIS	Obspar format version number	7	7
Detector	ACIS-01236	ACIS-01236	Obspar file type	PREDICTED	ACTUAL
Grating	NONE	NONE	Obspar update status	NONE	UPDATED
Data mode	VFAINT	VFAINT	CCD I0 on	Y	Y
Observation mode	POINTING	POINTING	CCD I1 on	Y	Y
[deg] Pointing RA	173.212540	173.2115230815894	CCD I2 on	Y	Y
[deg] Pointing Dec	14.500648	14.47316639254763	CCD I3 on	Y	Y
[deg] Pointing Roll	237.492238	237.7011472814491	CCD S0 on	N	N
[mm] SIM focus pos	-0.782348	-0.7809083437167272	CCD S1 on	N	N
[mm] SIM defocus	0	0.001439871863259334	CCD S2 on	O1	Y
[mm] SIM translation stage pos	-225.892463	-225.8835723768489	CCD S3 on	N	N
[mm] SIM translation stage offset	-7.7	-7.708880626080827	CCD S4 on	N	N
[s] Observation start time (MET)	451950774.184000	451949389.4603	CCD S5 on	N	N
Observation start date	2012-04-27T21:51:48	2012-04-27T21:29:49	Number of optional ACIS chips dropped	0	0
[s] Observation end time (MET)	451959774.184000	451960367.21089	On-chip summing requested	N	N
Observation end date	2012-04-28T00:21:48	2012-04-28T00:32:47	Subarray requested	NONE	NONE
Read mode	TIMED	TIMED	Alternating exposures requested	N	N
			[s] Primary exposure time	0.000000	3.1

2.3 Aspect



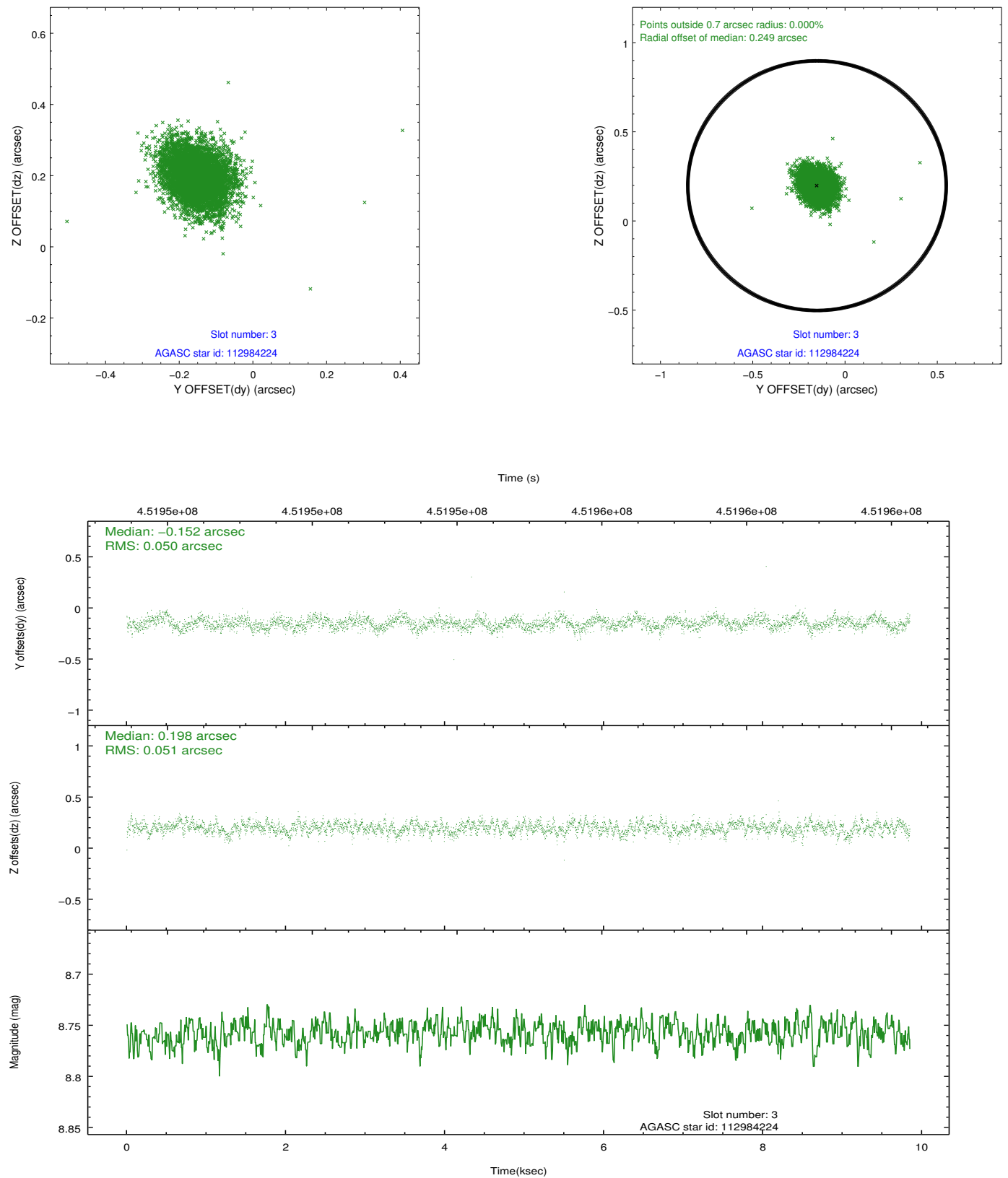


Slot Statistics

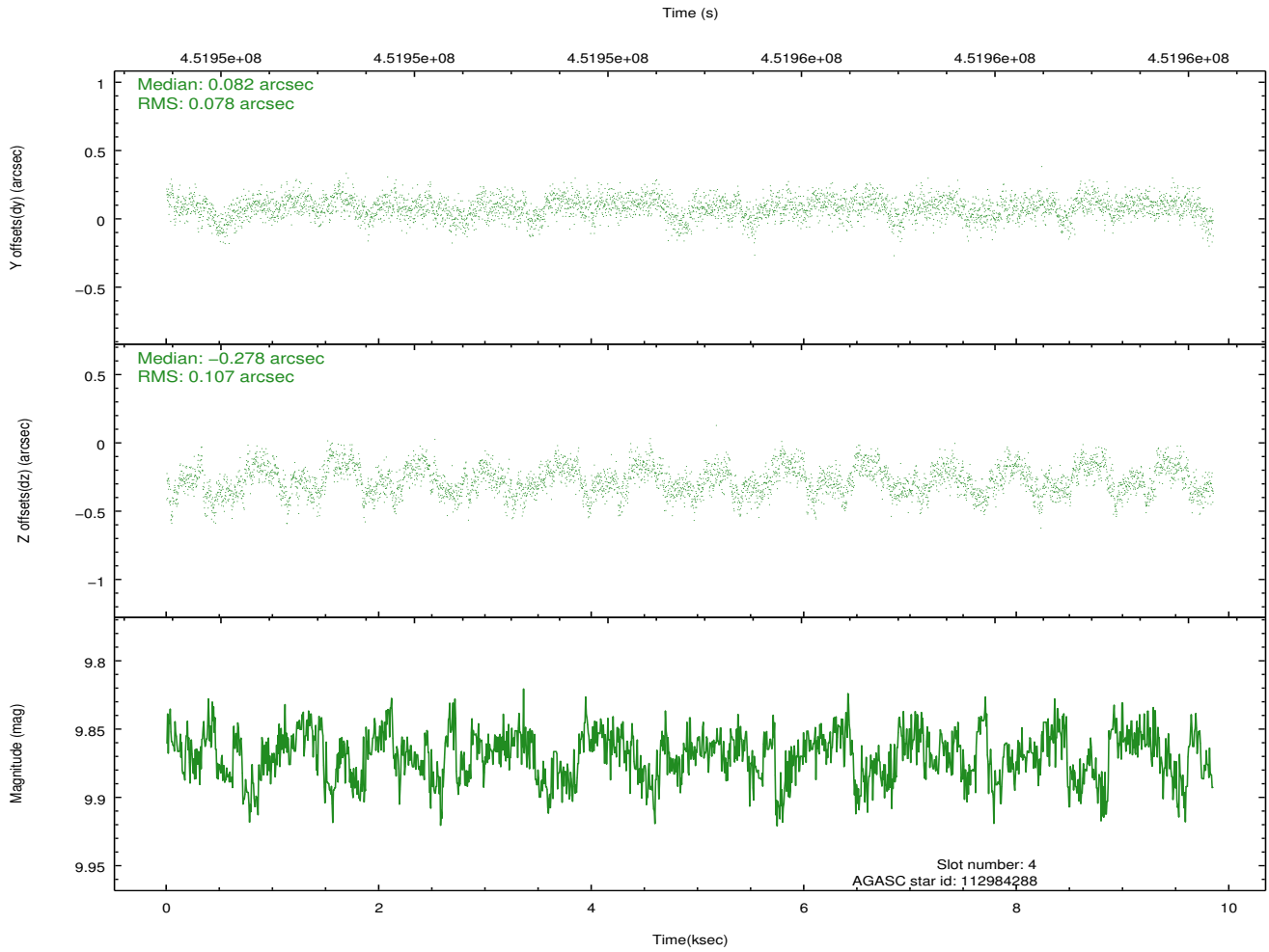
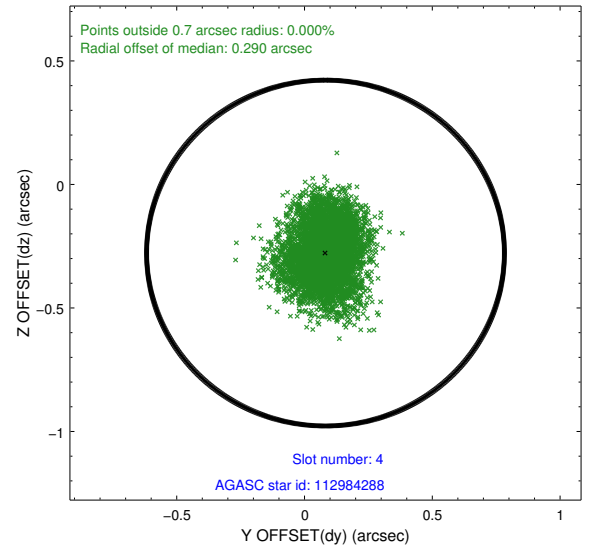
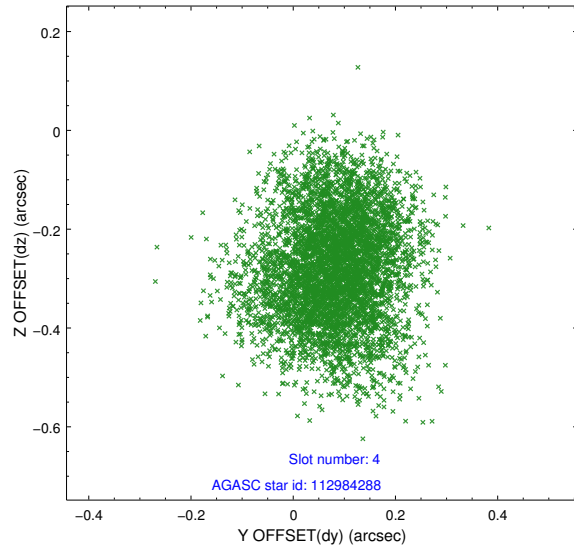
slot	status	id	mag	n_pts	med_dy	med_dz	dr1	dr2	ra	dec	mean_y	mean_z
0	FID	ACIS-I-1	7.06	2402	0.146	-0.099	0.006	0.011	0.000000	0.000000	928.71	-995.19
1	FID	ACIS-I-5	7.05	2402	-0.268	0.128	0.006	0.010	0.000000	0.000000	-1819.51	902.20
2	FID	ACIS-I-6	7.08	2401	0.031	0.042	0.006	0.011	0.000000	0.000000	393.55	1547.23
3	GUIDE	112984224	8.76	4804	-0.152	0.198	0.074	0.121	173.573457	14.695862	-1268.84	682.31
4	GUIDE	112984288	9.87	4801	0.082	-0.278	0.143	0.227	173.495458	14.757585	-1309.82	333.13
5	GUIDE	112984704	9.70	4776	-0.004	-0.016	0.114	0.188	173.313119	14.123525	956.09	1025.63
6	GUIDE	112993664	9.10	4802	-0.053	0.159	0.113	0.200	173.444735	14.478465	-366.92	725.37
7	GUIDE	113116952	8.59	4800	0.130	-0.049	0.094	0.157	174.059984	14.697676	-2188.72	2104.62

2.4 Star Slots

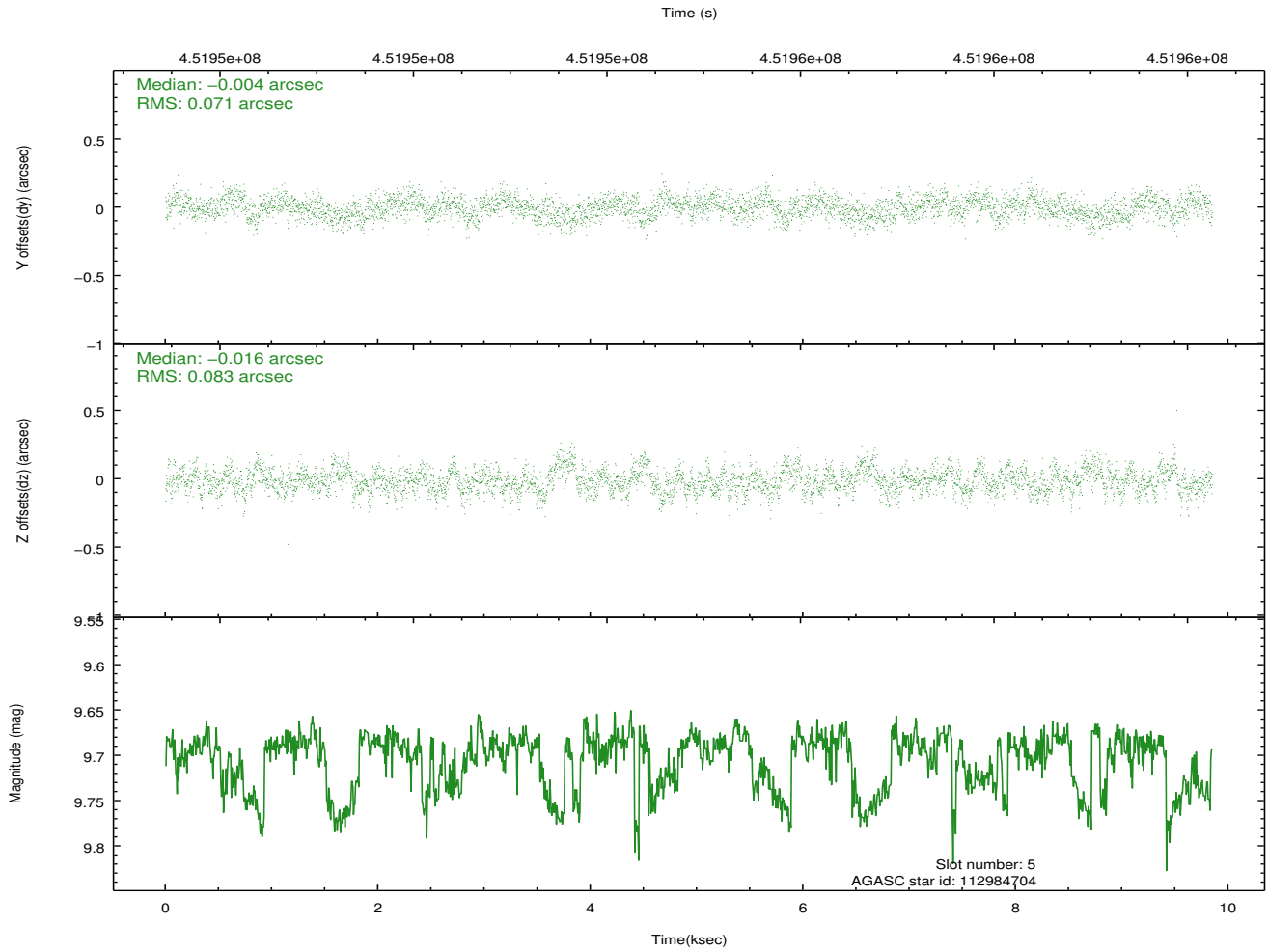
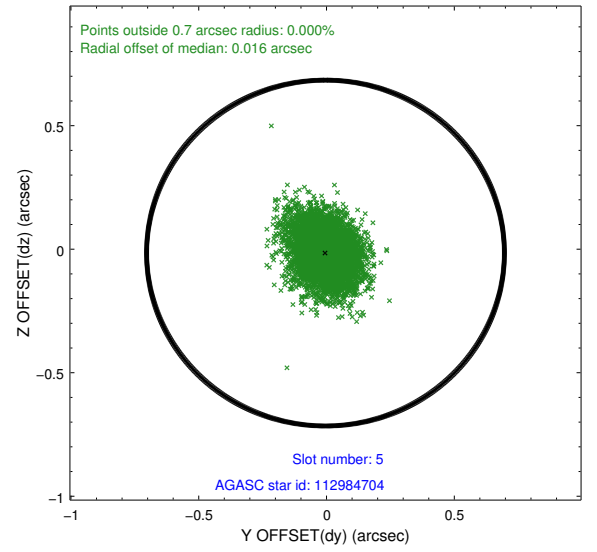
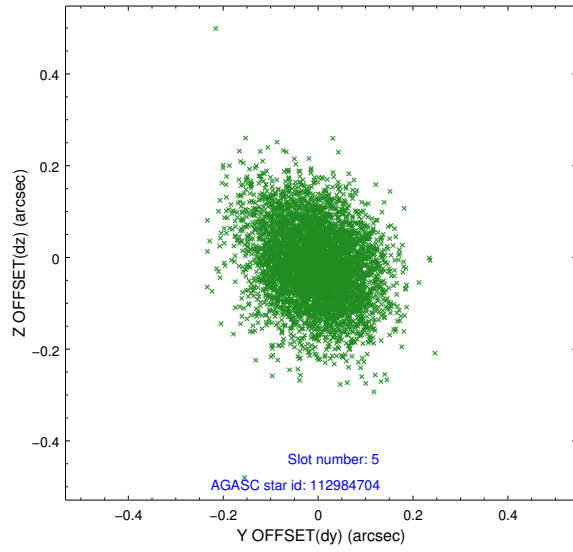
2.4.1 Slot 3



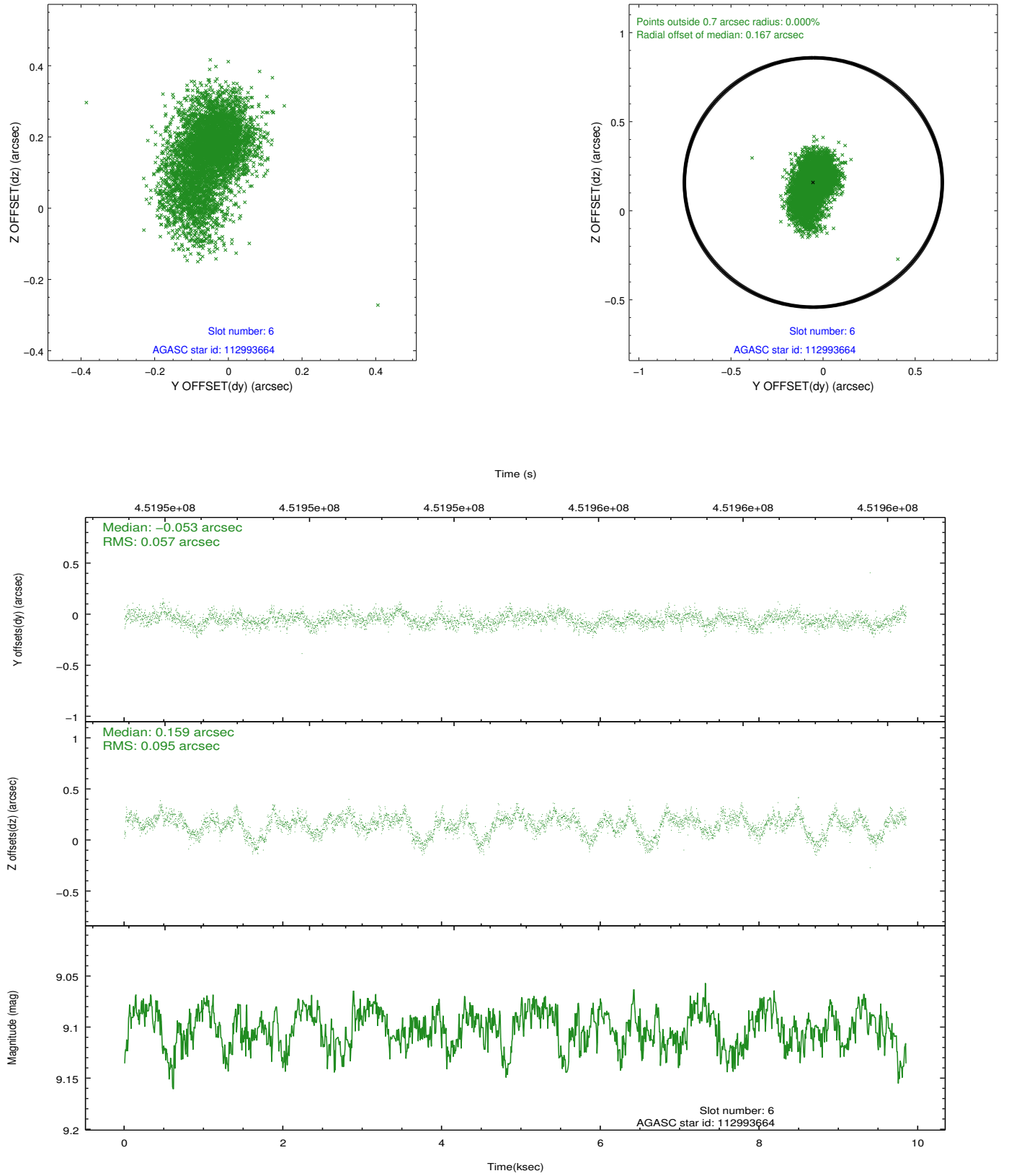
2.4.2 Slot 4



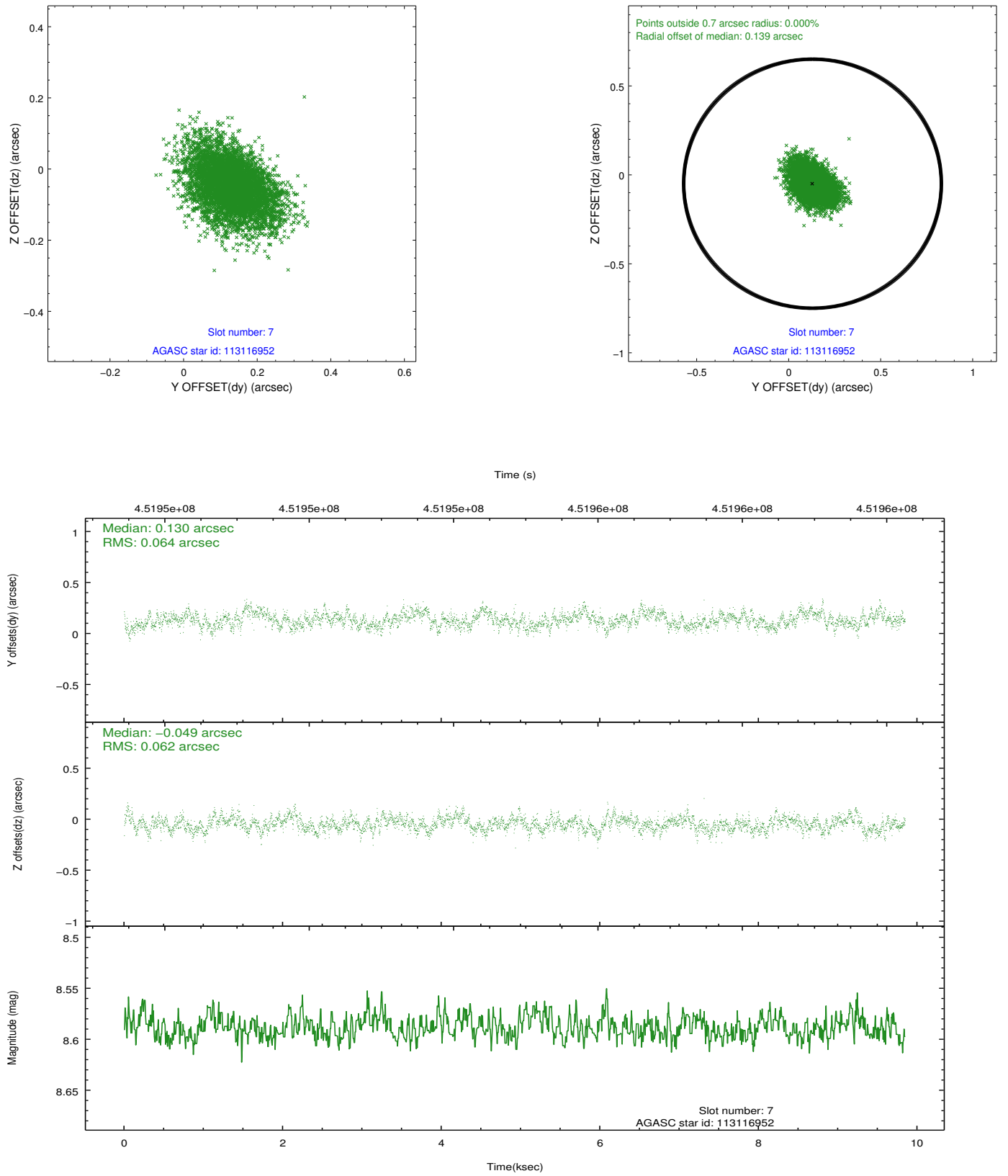
2.4.3 Slot 5



2.4.4 Slot 6

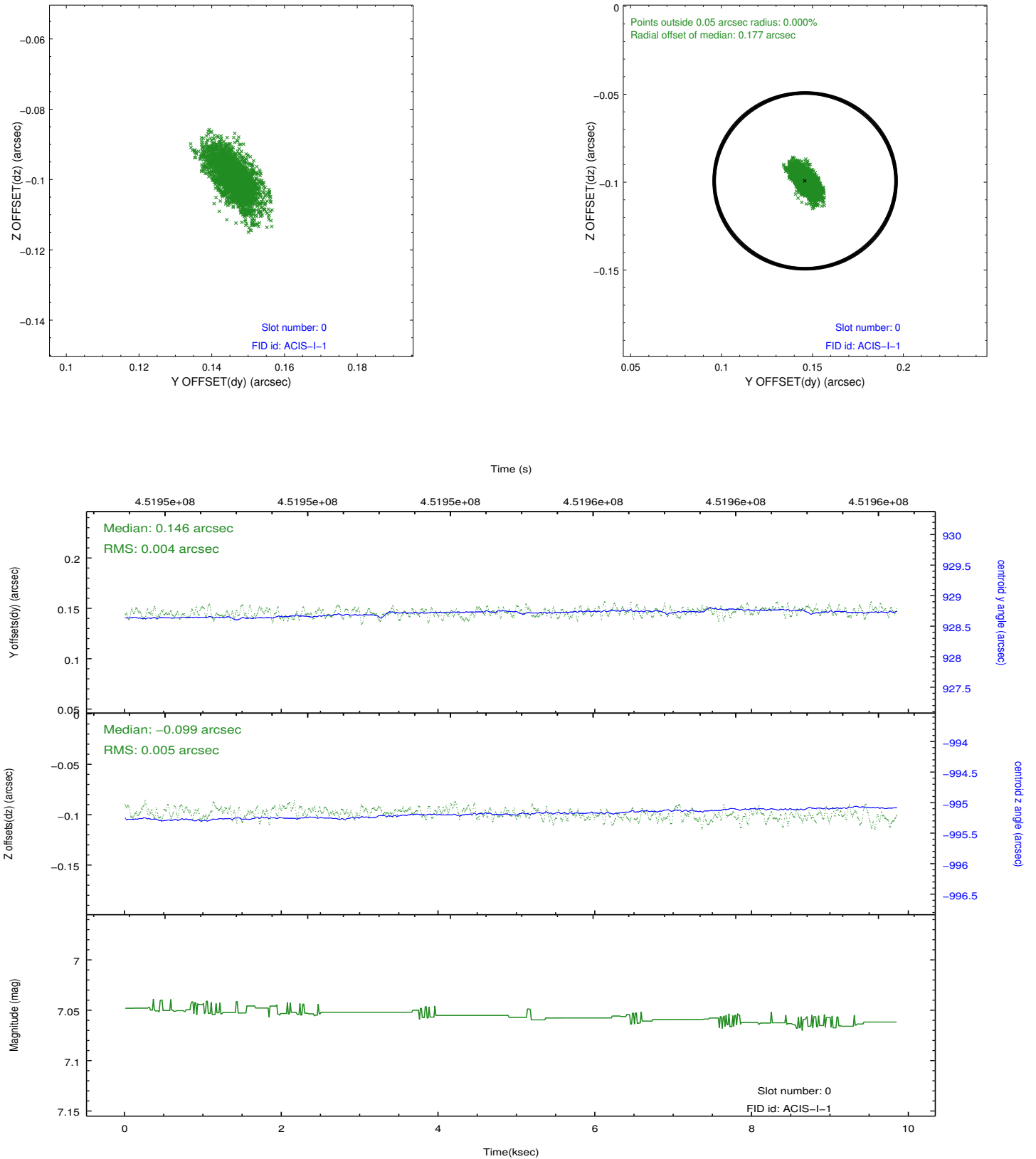


2.4.5 Slot 7

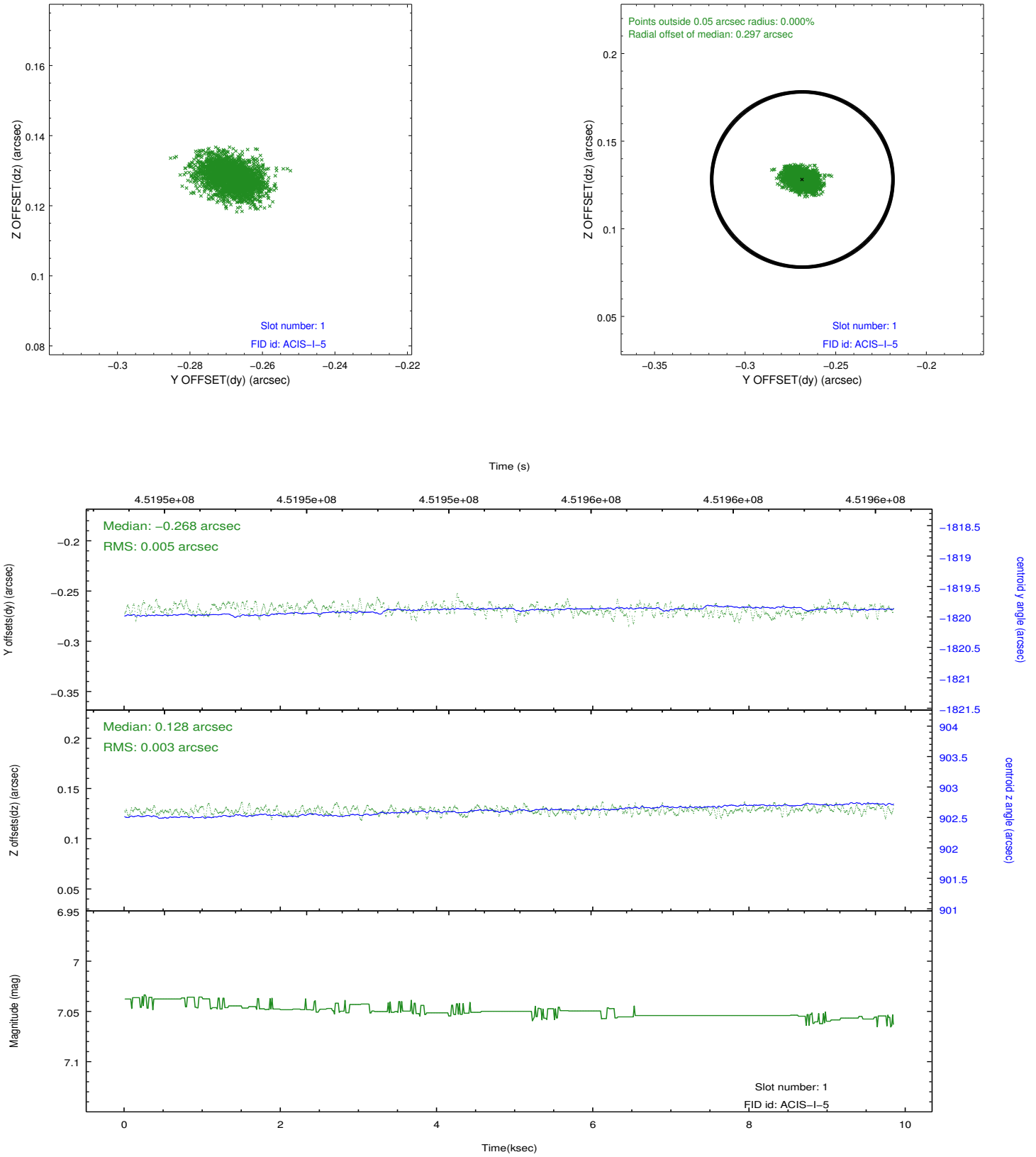


2.5 FID Slots

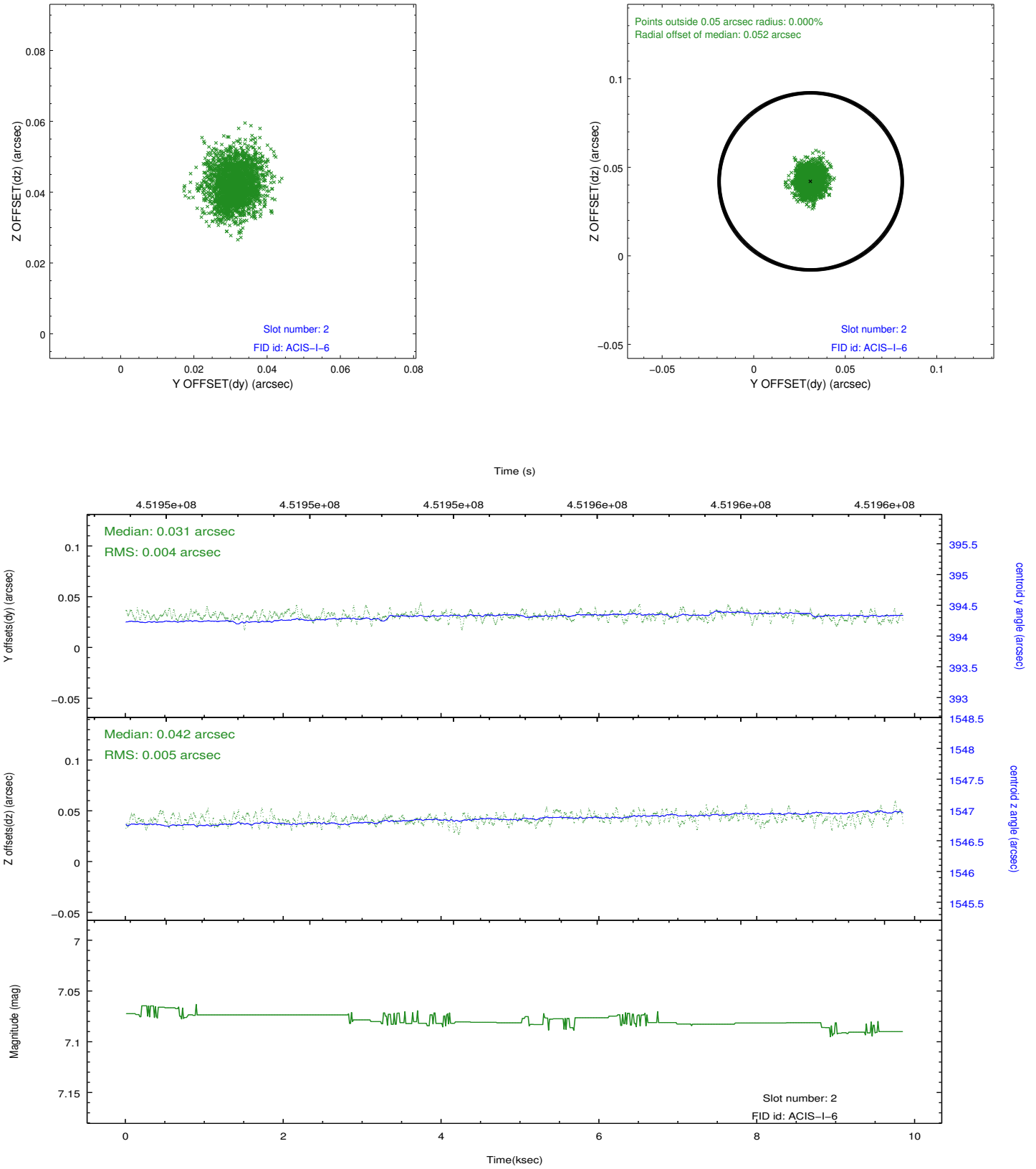
2.5.1 Slot 0



2.5.2 Slot 1



2.5.3 Slot 2



A Summary

A.1 Status

V&V Scientist	Joy Nichols
V&V Date (YYYY-MM-DD)	2012.04.30
V&V Edition	1
V&V Disposition and Status	OK
V&V Charge Time	9.0789681767821

A.2 Comments