

V&V Reference Report

L2 ASCDS Version : 8.4.3

Observation 13377 - L2 Version 2
Chandra X-Ray Center

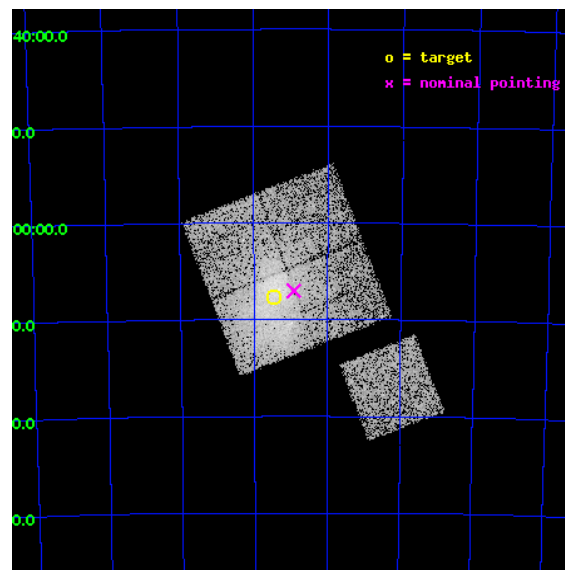
L2 Processing Date : Feb 28 2012

Contents

1	Front	2
2	OBI	3
2.1	OBI	3
2.1.1	Images	3
2.1.2	Bias	3
2.1.3	Parameters	4
2.1.4	Events	4
2.2	Compared Parameters	5
2.3	Aspect	6
2.4	Star Slots	9
2.4.1	Slot 3	9
2.4.2	Slot 4	10
2.4.3	Slot 5	11
2.4.4	Slot 6	12
2.4.5	Slot 7	13
2.5	FID Slots	14
2.5.1	Slot 0	14
2.5.2	Slot 1	15
2.5.3	Slot 2	16
A	Summary	17
A.1	Status	17
A.2	Comments	17

1 Front

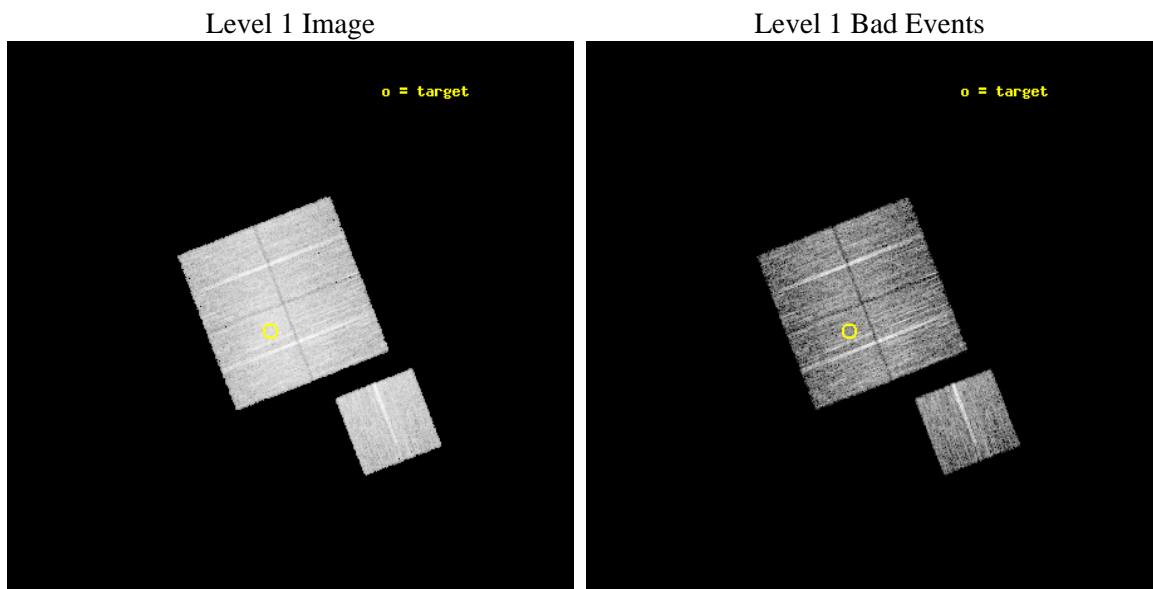
seq_num	801064	Sequence number
obs_id	13377	Observation id
title	Characterizing the Most Massive Clusters in the Local Universe	Pro
observer	Dr Stephen Murray	Principal investigator
object	G315.70-18.04	Source name
dtcycle	0	
cycle	P	events from which exps? Prim/Second/Both
ra_targ	247.87	Observer's specified target RA [deg]
dec_targ	-75.128694	Observer's specified target Dec [deg]
ra_nom	247.72973028954	Nominal RA [deg]
dec_nom	-75.117238575598	Nominal Dec [deg]
roll_nom	158.81064641157	Nominal Roll [deg]
revision	2	Processing version of data
ontime	9055.0590993166	Sum of GTIs [s]
livetime	8936.7480859465	Livetime [s]
ontime0	9051.824056983	Sum of GTIs [s]
ontime1	9058.1469479203	Sum of GTIs [s]
ontime2	9058.1879879236	Sum of GTIs [s]
ontime3	9055.0590993166	Sum of GTIs [s]
ontime6	9058.0648679137	Sum of GTIs [s]
l2events	45733	Number of level 2 events



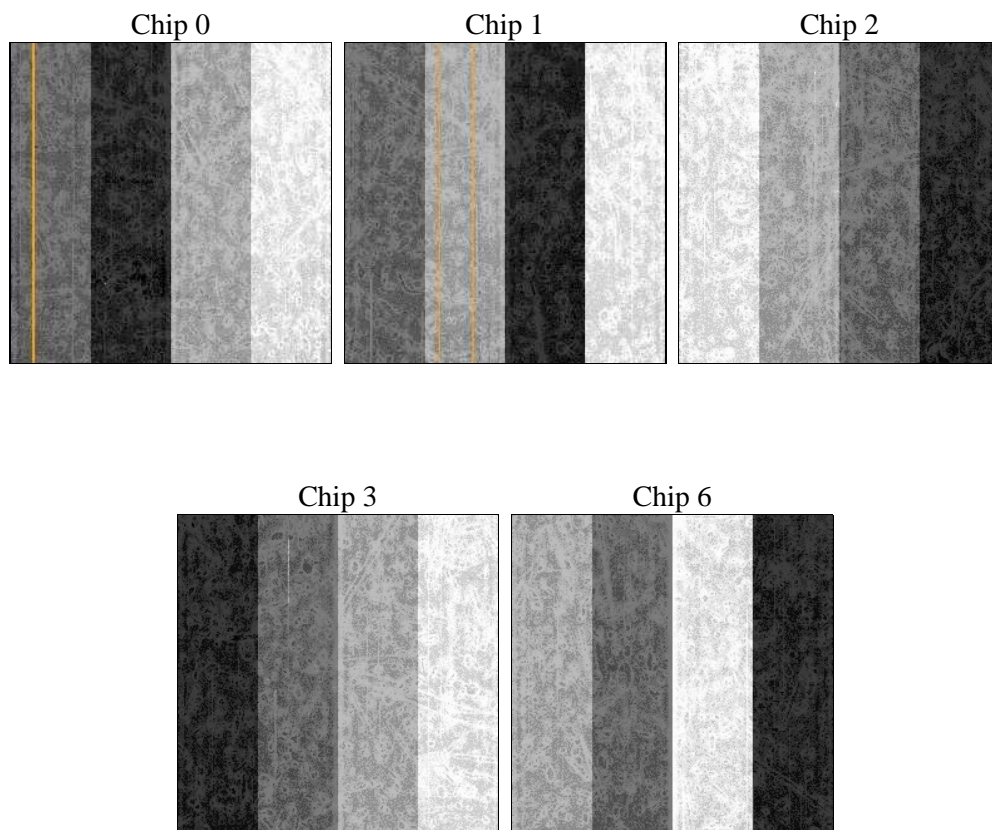
2 OBI

2.1 OBI

2.1.1 Images



2.1.2 Bias



2.1.3 Parameters

obi_num	0	Obi number	sched_exp_time	9000.000000	[s] Scheduled observation exposure time
ascdsver	8.4.3	Processing system revision	ontime	9055.0590993166	Sum of GTIs [s]
caldsver	4.4.8	 	ontime0	9051.824056983	Sum of GTIs [s]
date	2012-02-28T18:26:13	Date and time of file creation	ontime1	9058.1469479203	Sum of GTIs [s]
revision	2	Processing version of data	ontime2	9058.1879879236	Sum of GTIs [s]
			ontime3	9055.0590993166	Sum of GTIs [s]
			ontime6	9058.0648679137	Sum of GTIs [s]
			l1events	298558	Number of level 1 events

2.1.4 Events

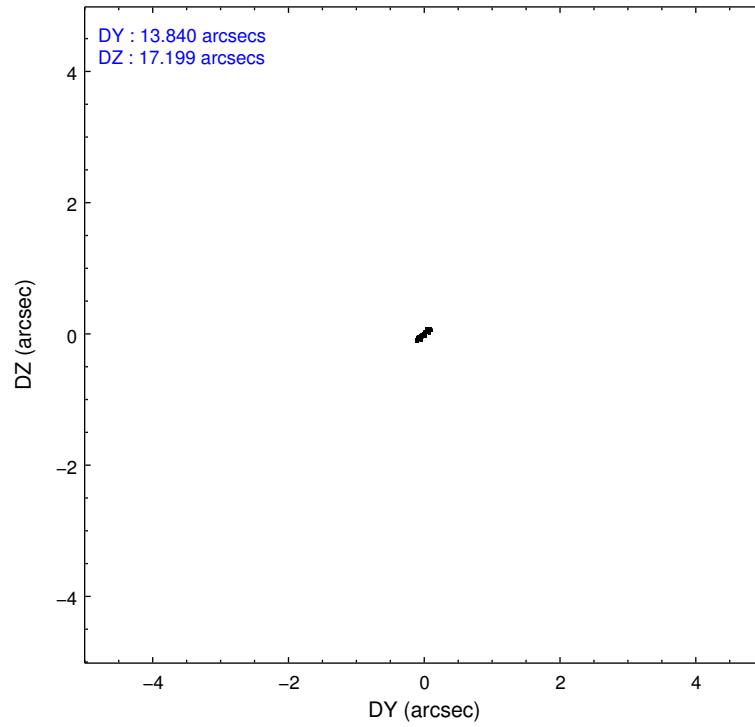
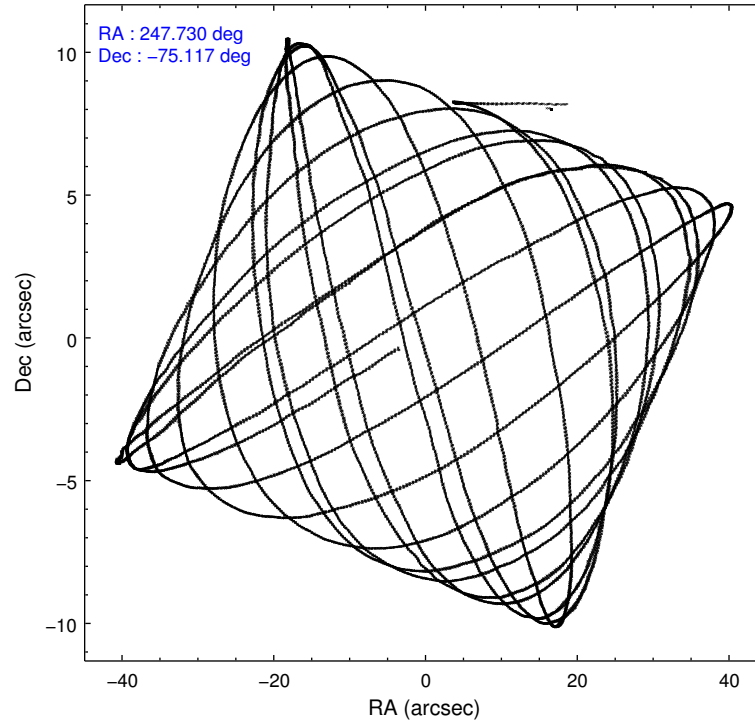
	ccd 0	ccd 1	ccd 2	ccd 3	ccd 6
level 1 events	53574	57017	61773	69828	56366
rejected events	46032	46900	53232	51246	49507
rejected %	85%	82%	86%	73%	87%

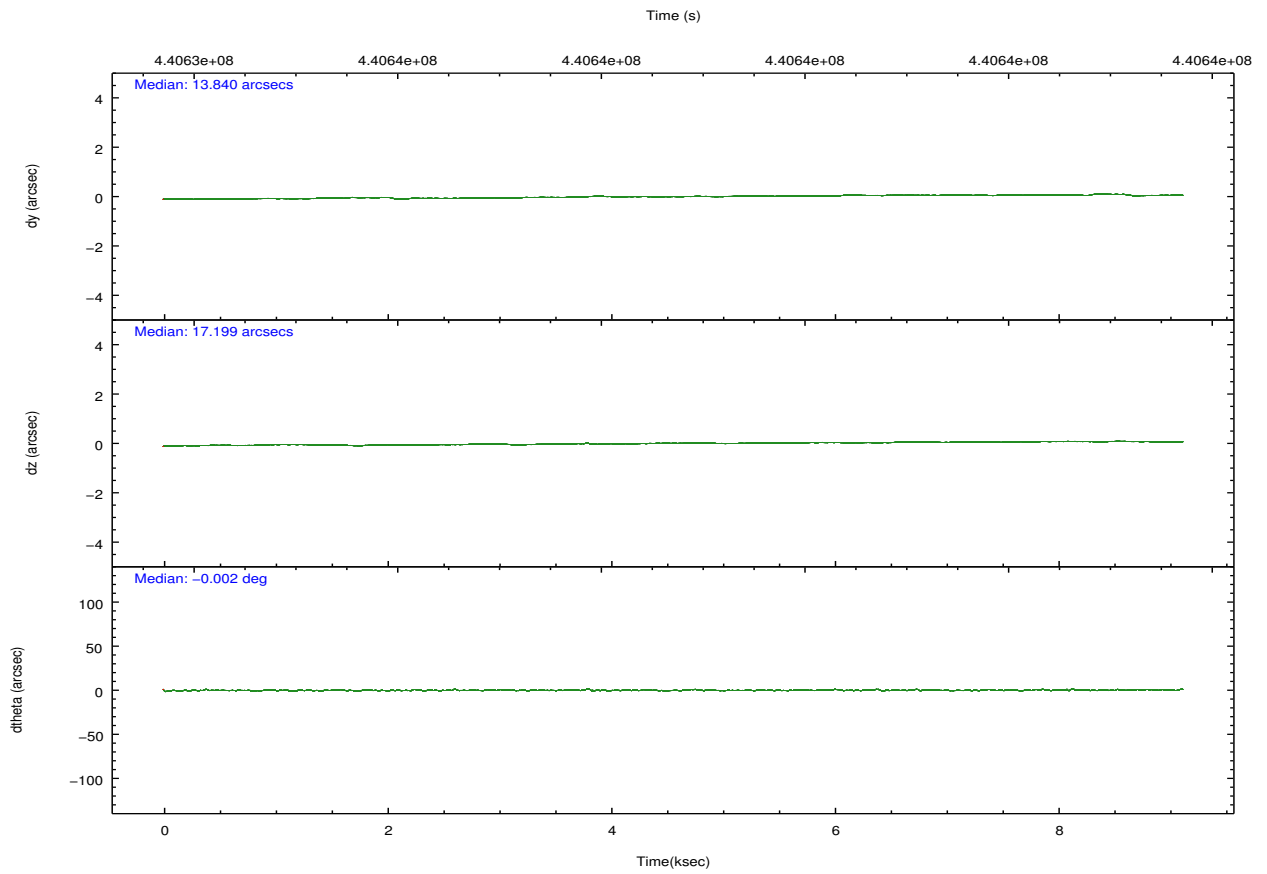
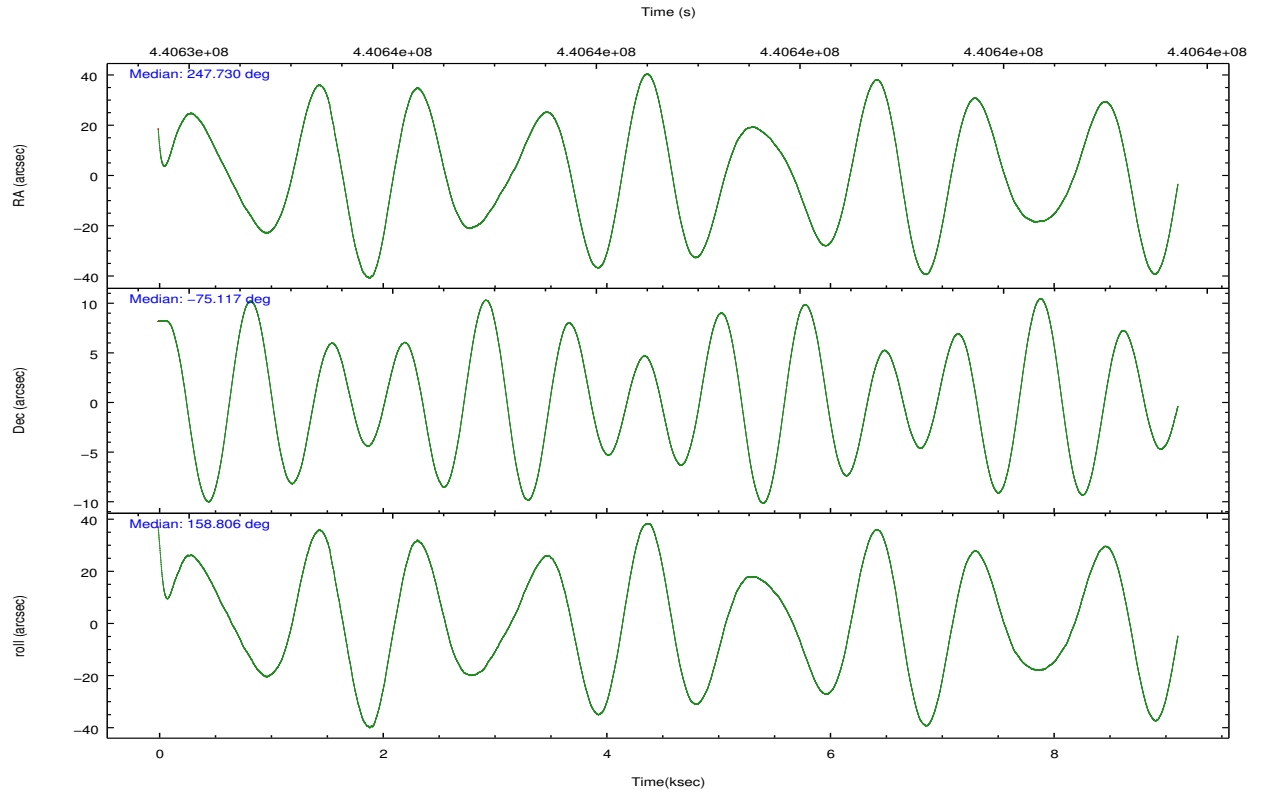
	ccd 0	ccd 1	ccd 2	ccd 3	ccd 6
grade 0 events	3026	4793	3981	12167	2474
	5%	8%	6%	17%	4%
grade 1 events	19	31	72	96	29
	0%	0%	0%	0%	0%
grade 2 events	1734	2046	1801	2690	1507
	3%	3%	2%	3%	2%
grade 3 events	733	785	721	1065	754
	1%	1%	1%	1%	1%
grade 4 events	732	832	725	1009	675
	1%	1%	1%	1%	1%
grade 5 events	2569	2770	2440	2923	2881
	4%	4%	3%	4%	5%
grade 6 events	1322	1664	1315	1658	1451
	2%	2%	2%	2%	2%
grade 7 events	43439	44096	50718	48220	46595
	81%	77%	82%	69%	82%

2.2 Compared Parameters

Parameter	Planned	Actual	Parameter	Planned	Actual
Instrument	ACIS	ACIS	Obspar format version number	7	7
Detector	ACIS-01236	ACIS-01236	Obspar file type	PREDICTED	ACTUAL
Grating	NONE	NONE	Obspar update status	NONE	UPDATED
Data mode	VFAINT	VFAINT	CCD I0 on	Y	Y
Observation mode	POINTING	POINTING	CCD I1 on	Y	Y
[deg] Pointing RA	247.835444	247.7297302895355	CCD I2 on	Y	Y
[deg] Pointing Dec	-75.112880	-75.11723857559829	CCD I3 on	Y	Y
[deg] Pointing Roll	158.704105	158.8106464115664	CCD S0 on	N	N
[mm] SIM focus pos	-0.782348	-0.7809083437167272	CCD S1 on	N	N
[mm] SIM defocus	0	0.001439871863259334	CCD S2 on	O1	Y
[mm] SIM translation stage pos	-228.817463	-228.8202926490709	CCD S3 on	N	N
[mm] SIM translation stage offset	-4.775	-4.772160353858766	CCD S4 on	N	N
[s] Observation start time (MET)	440634252.184000	440632993.72362	CCD S5 on	N	N
Observation start date	2011-12-18T22:23:06	2011-12-18T22:03:13	Number of optional ACIS chips dropped	0	0
[s] Observation end time (MET)	440643252.184000	440643763.39919	On-chip summing requested	N	N
Observation end date	2011-12-19T00:53:06	2011-12-19T01:02:43	Subarray requested	NONE	NONE
Read mode	TIMED	TIMED	Alternating exposures requested	N	N
			[s] Primary exposure time	0.000000	3.1

2.3 Aspect



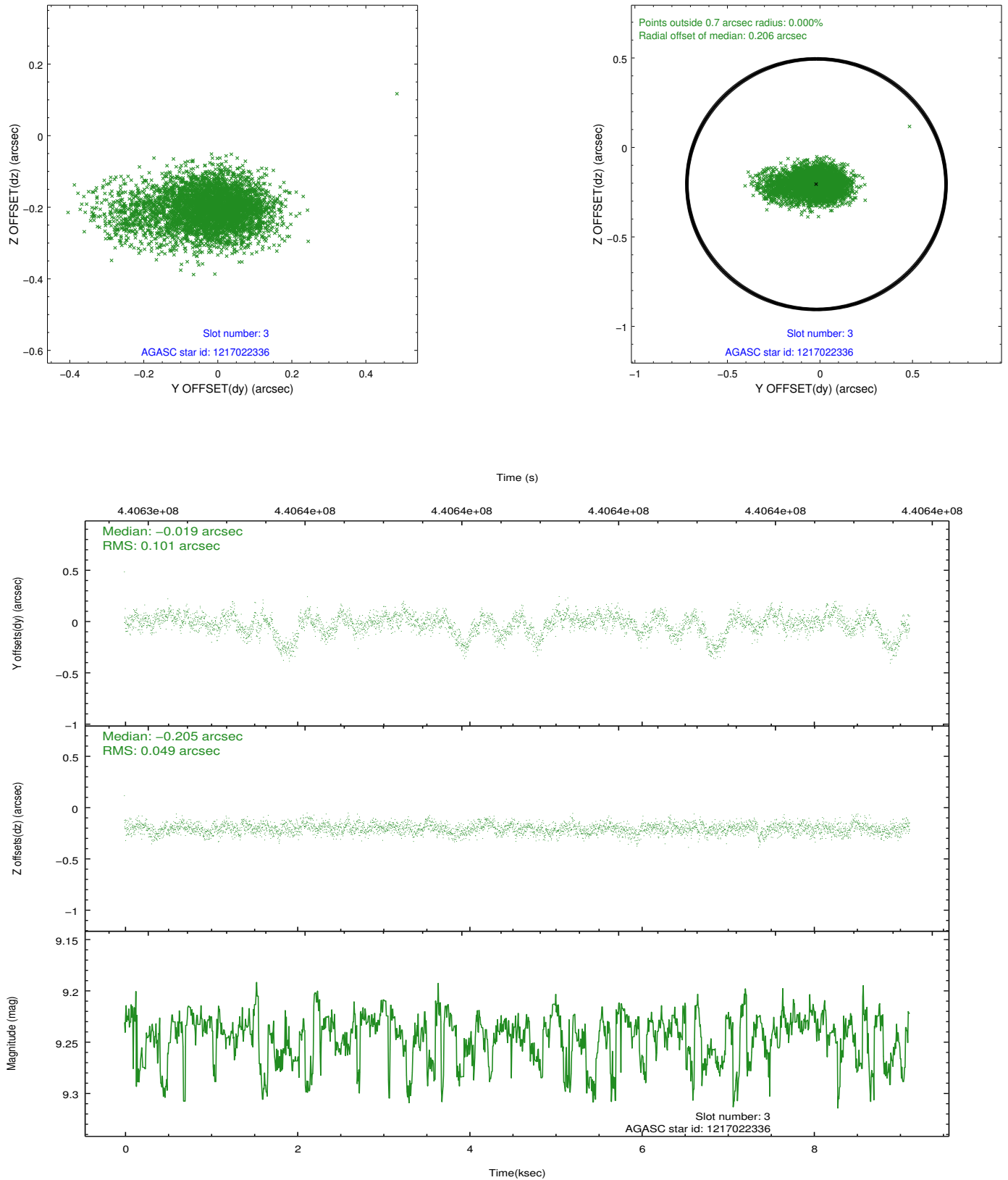


Slot Statistics

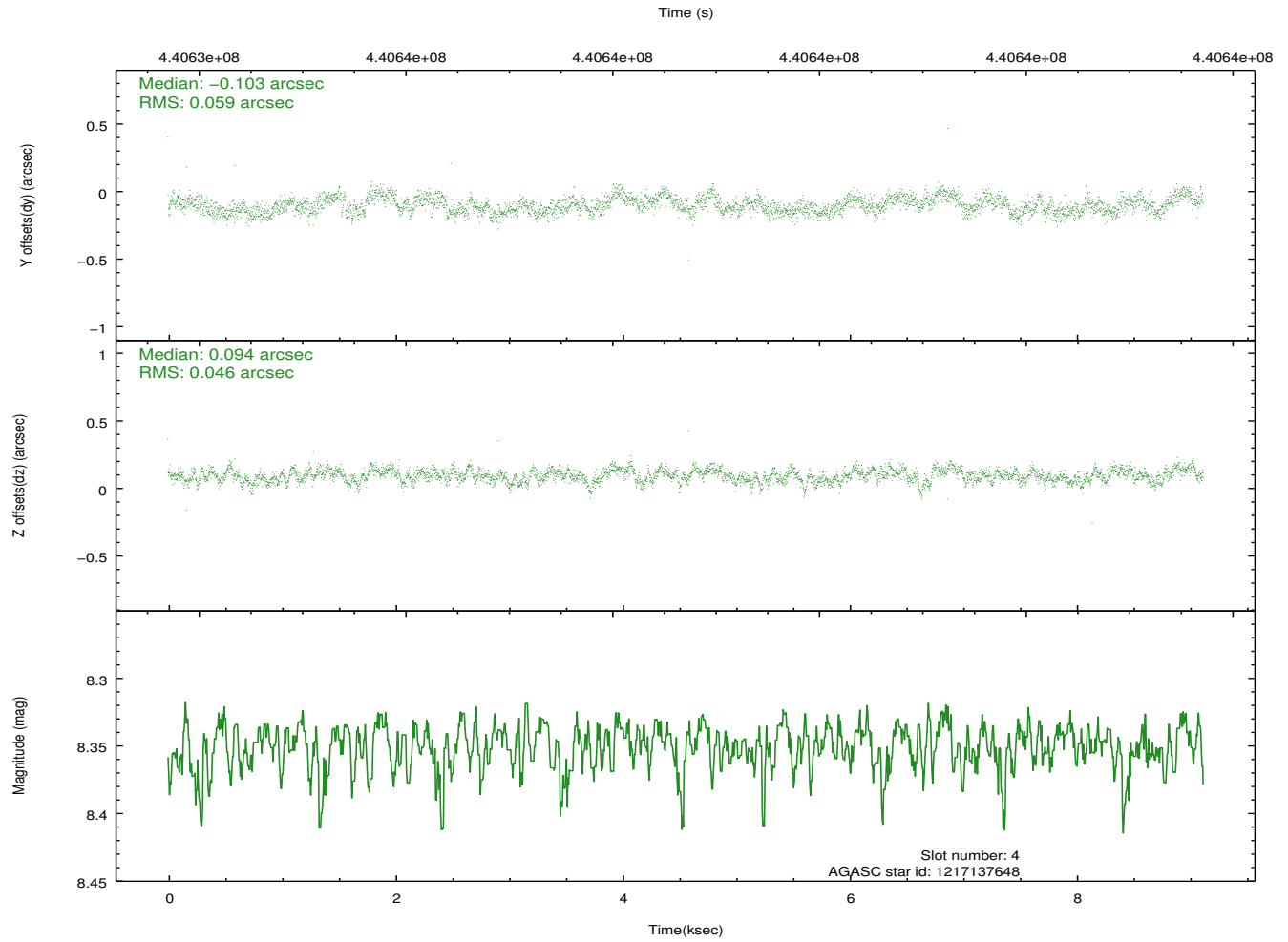
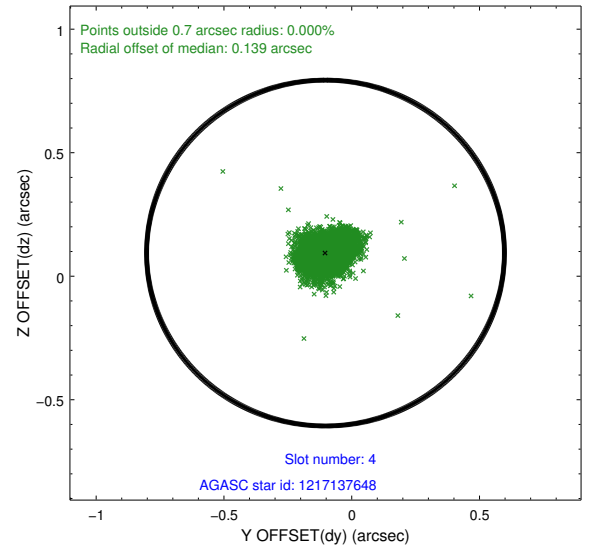
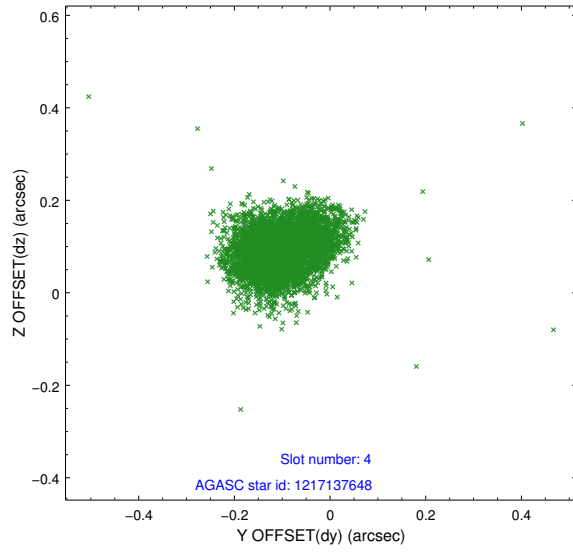
slot	status	id	mag	n_pts	med_dy	med_dz	dr1	dr2	ra	dec	mean_y	mean_z
0	FID	ACIS-I-1	7.03	2225	0.101	-0.065	0.007	0.012	0.000000	0.000000	925.67	-938.84
1	FID	ACIS-I-5	7.01	2225	-0.259	0.087	0.007	0.011	0.000000	0.000000	-1822.47	958.44
2	FID	ACIS-I-6	7.01	2225	0.068	0.049	0.007	0.011	0.000000	0.000000	390.53	1603.60
3	GUIDE	1217022336	9.24	4420	-0.019	-0.205	0.108	0.219	245.608854	-74.939199	2153.29	210.25
4	GUIDE	1217137648	8.35	4447	-0.103	0.094	0.079	0.125	246.131171	-74.867949	1804.73	-217.78
5	GUIDE	1237600112	8.38	4449	-0.004	0.046	0.106	0.164	249.788726	-75.488665	-2142.46	647.91
6	GUIDE	1217136912	9.22	4446	0.110	0.404	0.097	0.157	249.259653	-74.527180	-514.42	-2445.36
7	GUIDE	1237594072	8.54	4448	0.030	-0.338	0.094	0.152	248.210029	-75.718211	-1101.77	1909.72

2.4 Star Slots

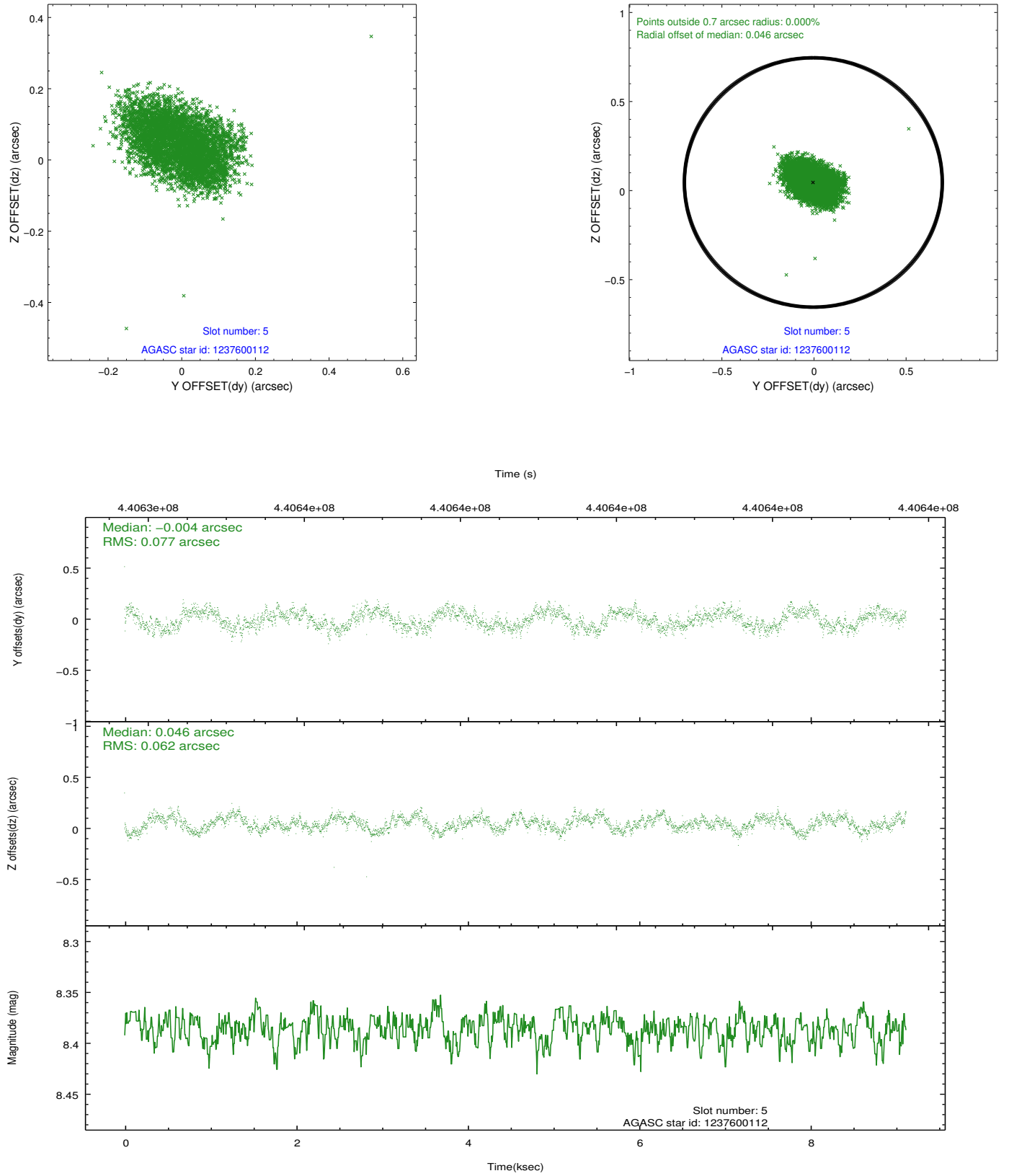
2.4.1 Slot 3



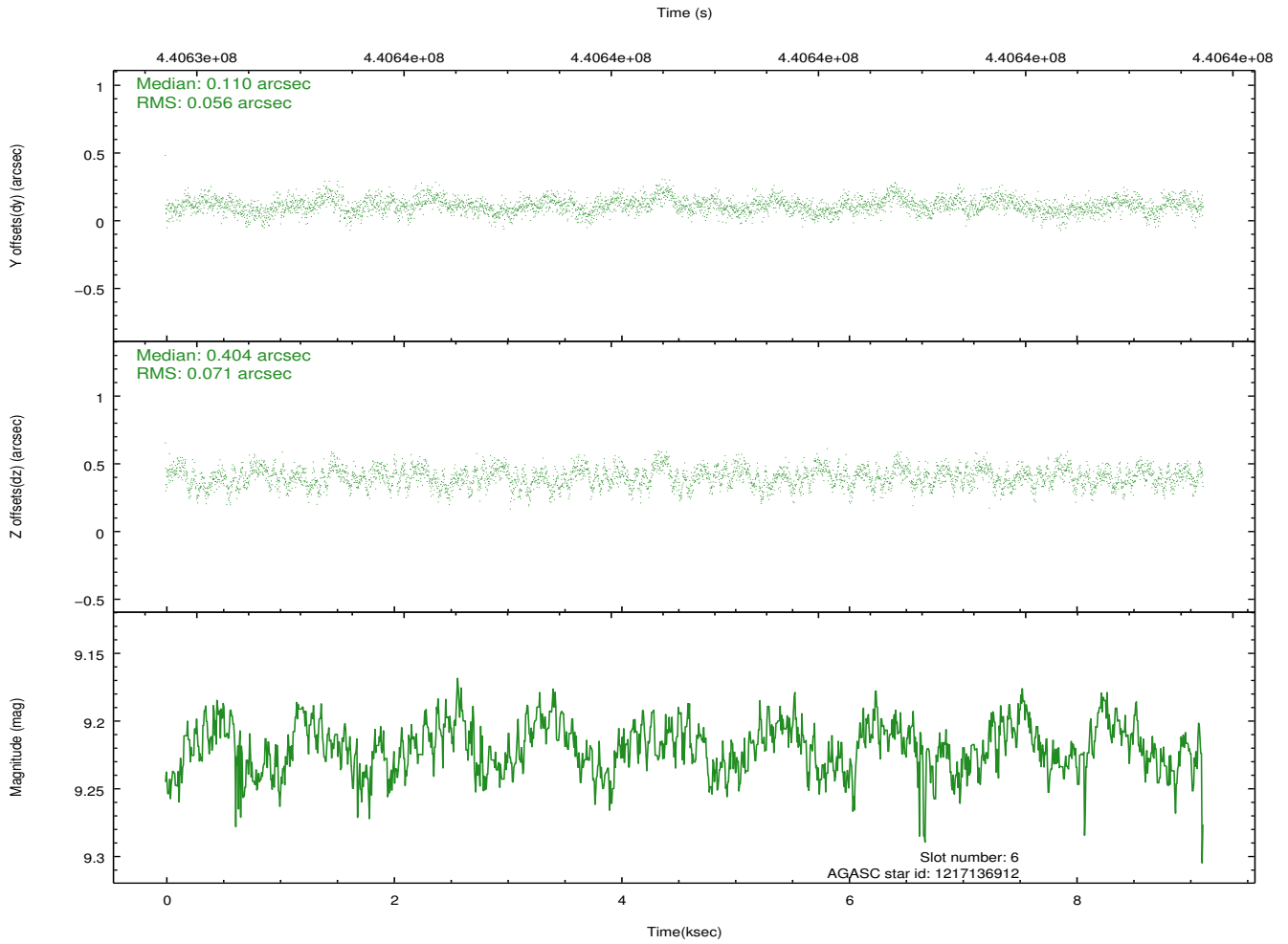
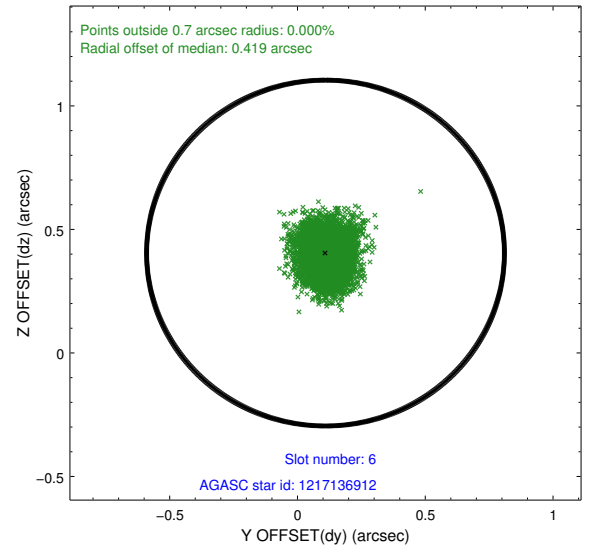
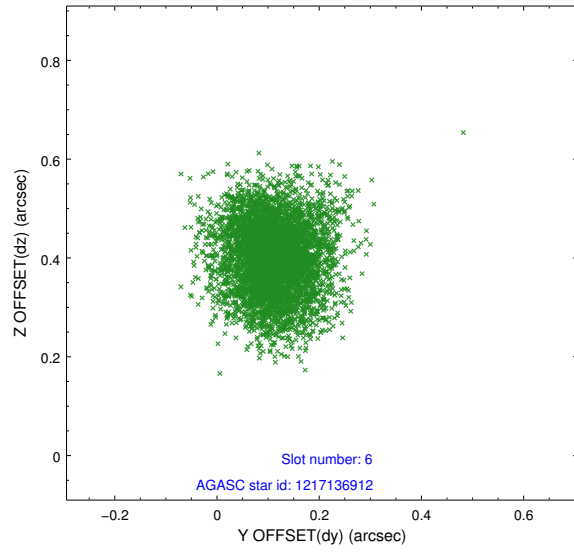
2.4.2 Slot 4



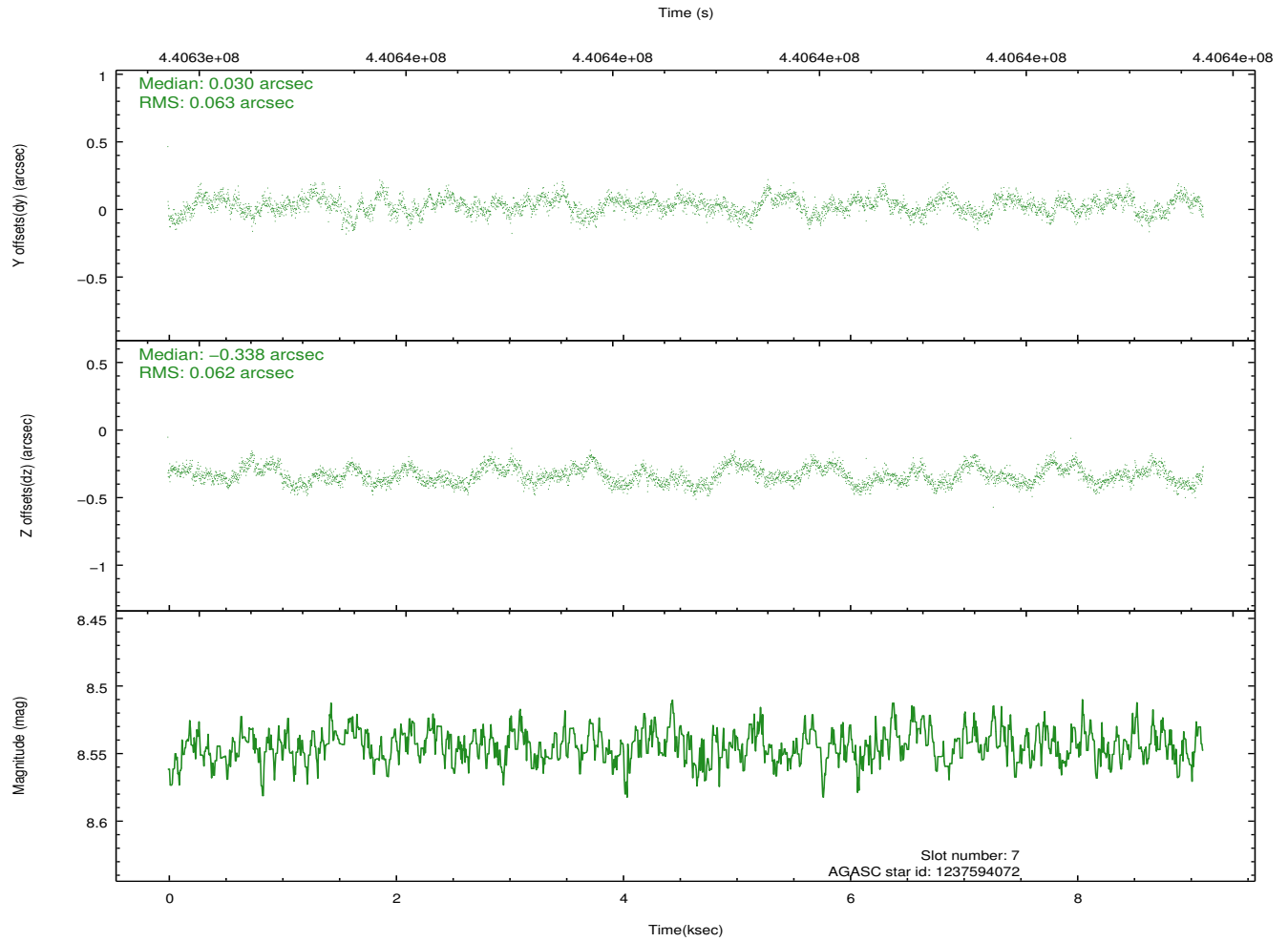
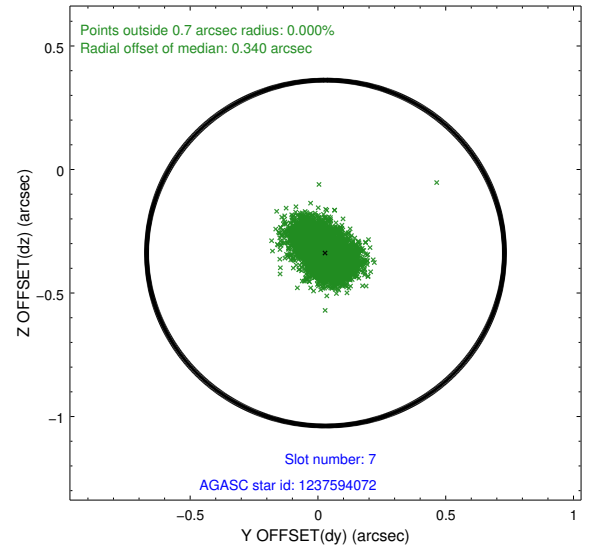
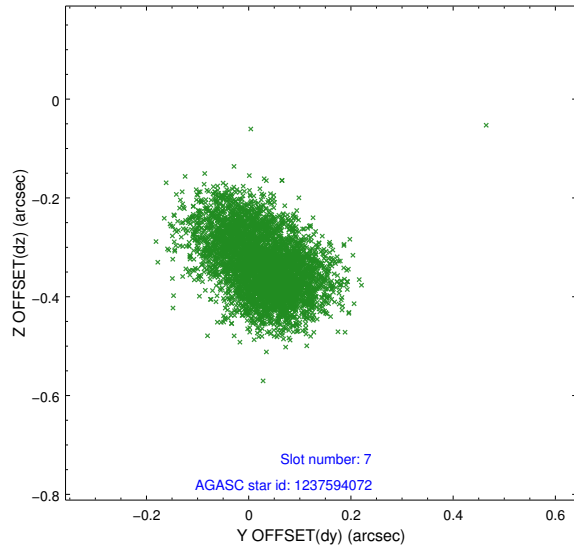
2.4.3 Slot 5



2.4.4 Slot 6

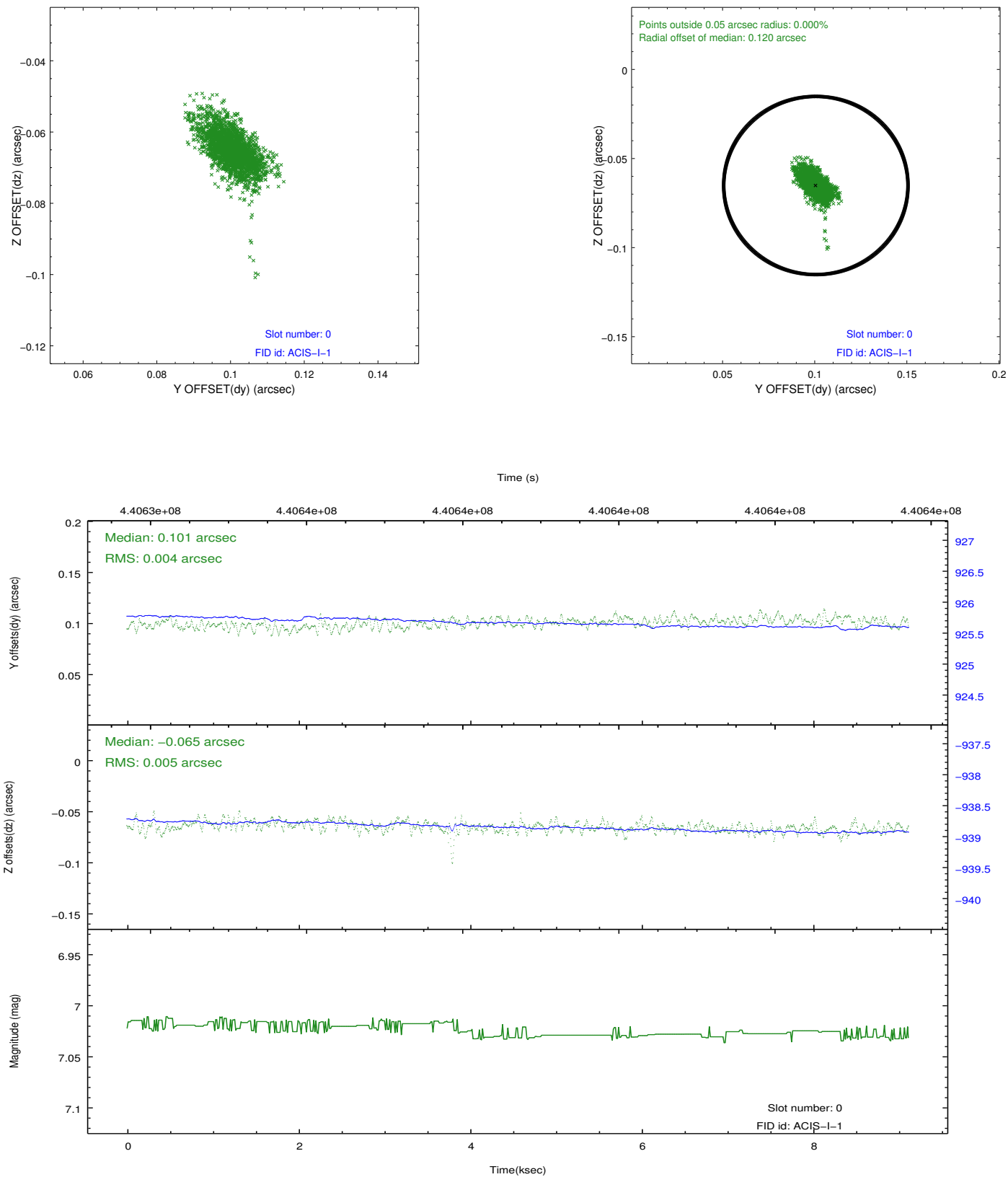


2.4.5 Slot 7

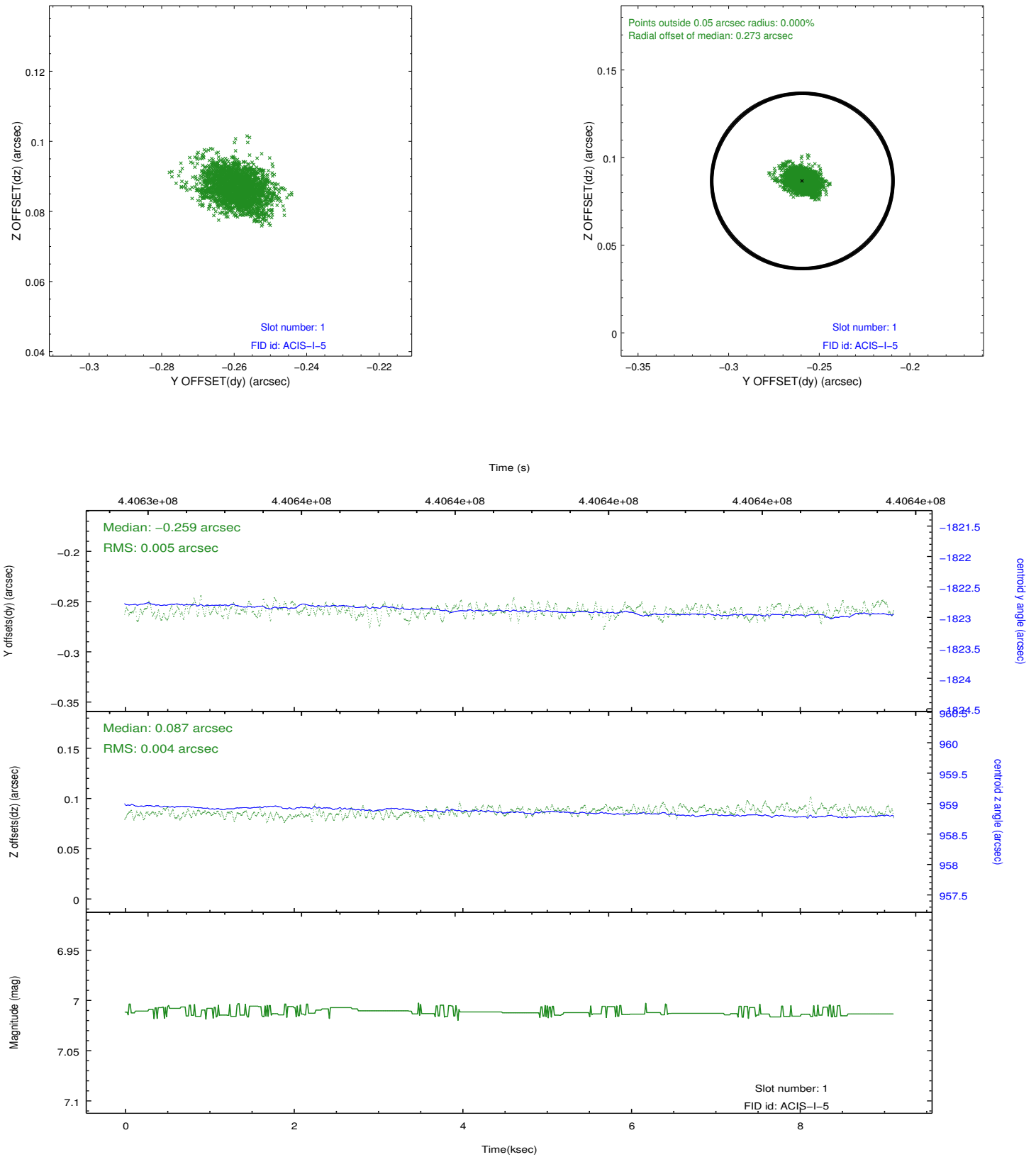


2.5 FID Slots

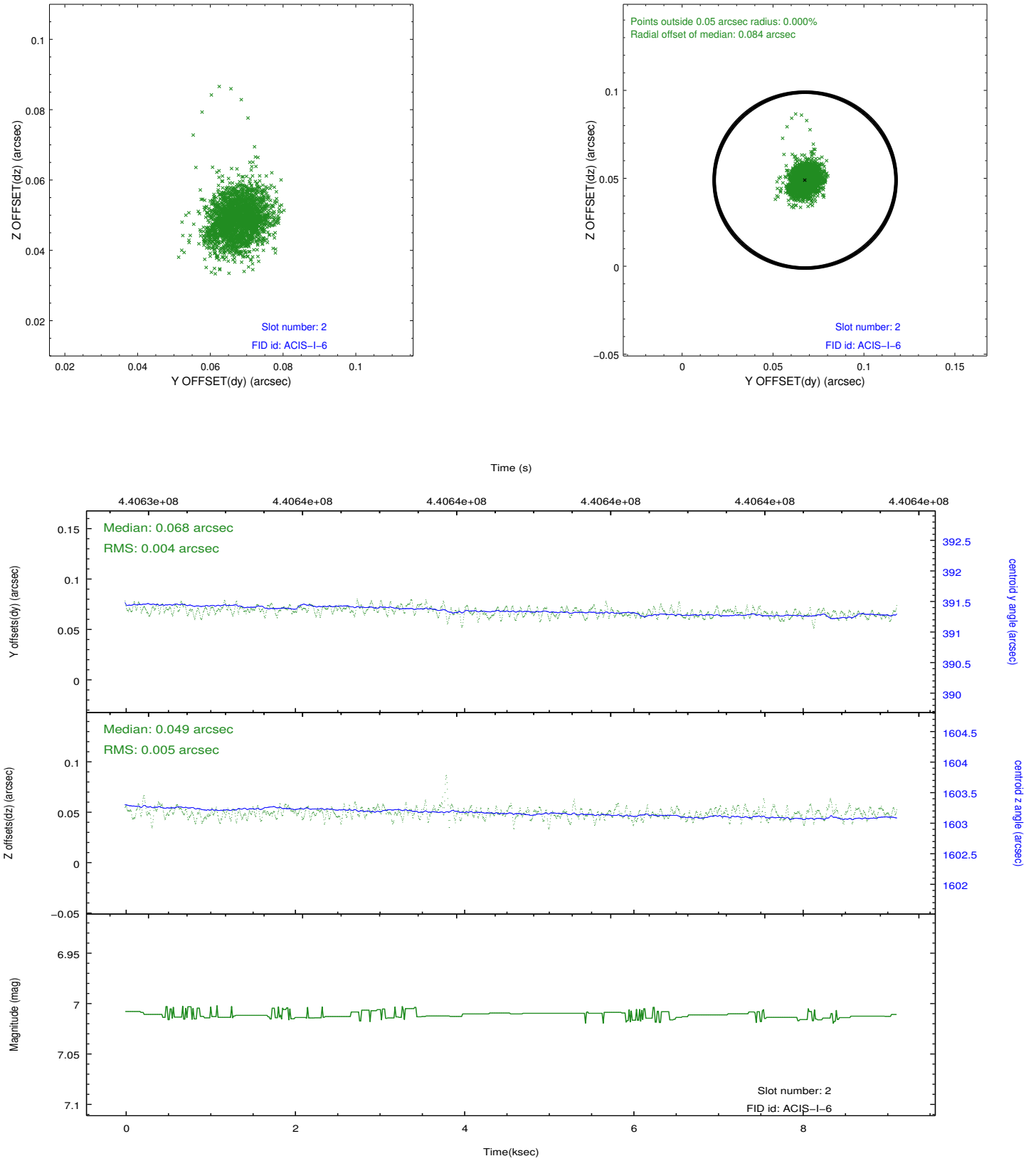
2.5.1 Slot 0



2.5.2 Slot 1



2.5.3 Slot 2



A Summary

A.1 Status

V&V Scientist	Beth Sundheim
V&V Date (YYYY-MM-DD)	2012.02.29
V&V Edition	1
V&V Disposition and Status	OK
V&V Charge Time	9.0550590993166

A.2 Comments